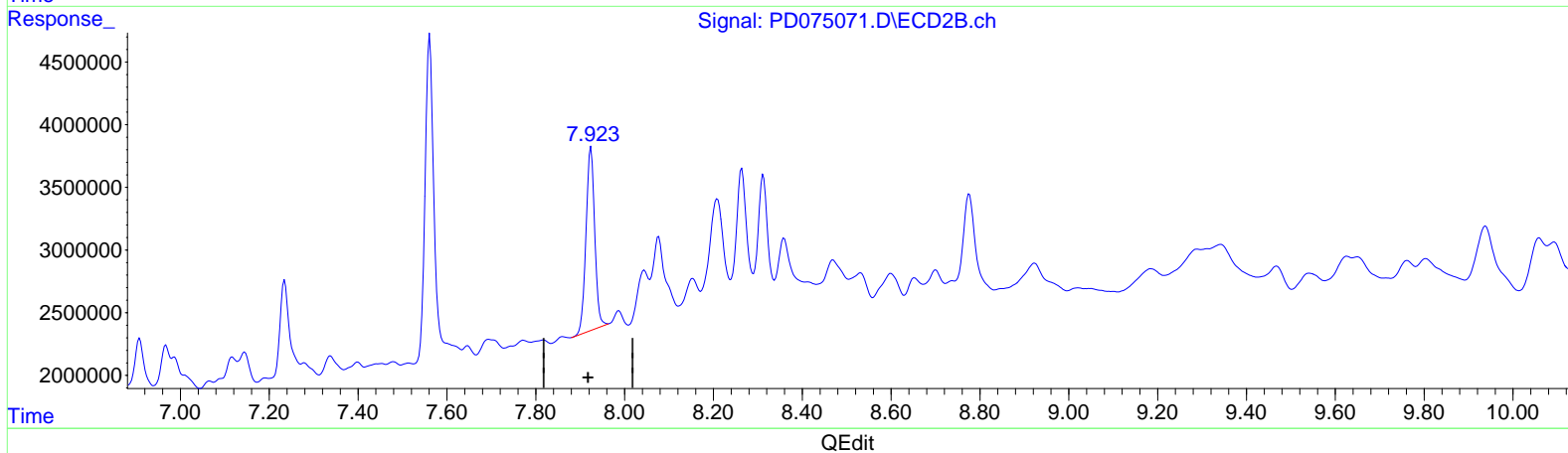
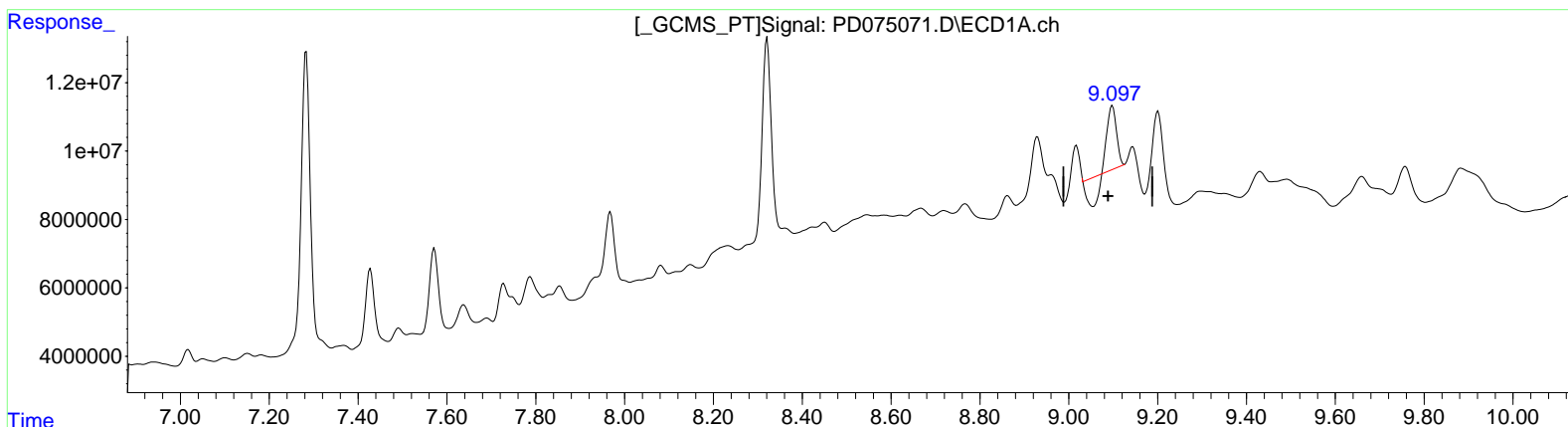


Data Path : Z:\pestpcbsrv\HPCHEM1\ECD_D\Data\PD050123\
 Data File : PD075071.D
 Signal(s) : Signal #1: ECD1A.ch Signal #2: ECD2B.ch
 Acq On : 01 May 2023 11:43
 Operator : AR\AJ
 Sample : 02374-02
 Misc :
 ALS Vial : 9 Sample Multiplier: 1

Integration File signal 1: autoint1.e
 Integration File signal 2: autoint2.e
 Quant Time: May 02 07:13:23 2023
 Quant Method : Z:\pestpcbsrv\HPCHEM1\ECD_D\Method\PD042723CLP.M
 Quant Title : GC Extractables
 QLast Update : Fri Apr 28 02:34:46 2023
 Response via : Initial Calibration
 Integrator: ChemStation

Volume Inj. : 1 µl
 Signal #1 Phase : ZB-MR1 Signal #2 Phase: ZB-MR2
 Signal #1 Info : 30M x 0.32mm x 0.5 Signal #2 Info : 30M x 0.32mm x 0.25µm



(27) Decachlorobiphenyl (SA)

9.098min 6.721 ng/ml

response 16052232

(27) Decachlorobiphenyl #2 (SA)

7.924min 20.582 ng/ml

response 19771103