

Data Path : Z:\pestpcbsrv\HPCHEM1\ECD_D\Data\PD050223\
 Data File : PD075114.D
 Signal(s) : Signal #1: ECD1A.ch Signal #2: ECD2B.ch
 Acq On : 02 May 2023 14:19
 Operator : AR\AJ
 Sample : 02417-08DL 20X
 Misc :
 ALS Vial : 23 Sample Multiplier: 1

Instrument :
 ECD_D
ClientSampleId :
 EW8X4DL

Manual Integrations
APPROVED
 Reviewed By :Abdul Mirza 05/04/2023
 Supervised By :Ankita Jodhani 05/04/2023

Integration File signal 1: autoint1.e
 Integration File signal 2: autoint2.e
 Quant Time: May 03 01:52:16 2023
 Quant Method : Z:\pestpcbsrv\HPCHEM1\ECD_D\Method\PD042723CLP.M
 Quant Title : GC Extractables
 QLast Update : Fri Apr 28 02:34:46 2023
 Response via : Initial Calibration
 Integrator: ChemStation

Volume Inj. : 1 µl
 Signal #1 Phase : ZB-MR1 Signal #2 Phase: ZB-MR2
 Signal #1 Info : 30M x 0.32mm x0.5 Signal #2 Info : 30M x 0.32mm x 0.25µm

Compound	RT#1	RT#2	Resp#1	Resp#2	ng/ml	ng/ml

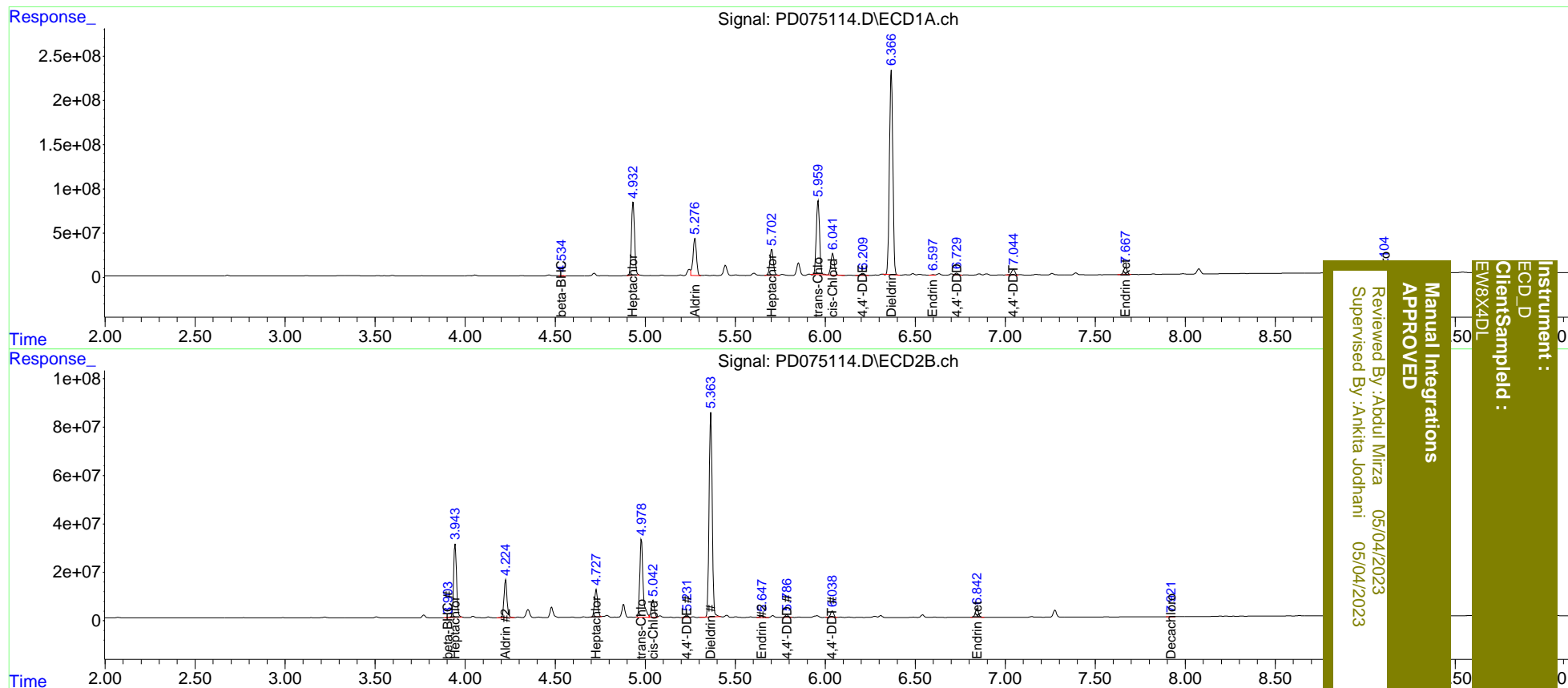
System Monitoring Compounds						
27) SA Decachlor...	9.104	7.921	5775254	1863315	2.418m	1.940m
Target Compounds						
4) MA Heptachlor	4.933	3.945	1011.1E6	343.6E6	291.859	246.330
5) MB Aldrin	5.276	4.225	560.2E6	182.7E6	167.266m	138.947
6) B beta-BHC	4.534	3.903	1349736	532240	0.916m	0.782m
8) B Heptachlo...	5.703	4.728	398.9E6	131.3E6	132.822	106.911
10) B trans-Chl...	5.961	4.979	1060.6E6	407.4E6	354.303	336.317
11) B cis-Chlor...	6.042	5.044	330.6E6	86312045	106.047	69.710 #
12) B 4,4'-DDE	6.209	5.232	40308700	10802102	13.723m	9.549 #
13) MA Dieldrin	6.367	5.365	2985.9E6	1023.1E6	939.394	815.061
14) MA Endrin	6.597	5.649	9336806	11542325	3.446m	10.443 #
16) A 4,4'-DDD	6.729	5.786	28771632	12481021	11.898m	12.918m
17) MA 4,4'-DDT	7.046	6.040	87556259	32110644	34.847	32.370
21) B Endrin ke...	7.668	6.844	110.4E6	44160330	38.144	37.035

(f)=RT Delta > 1/2 Window (#)=Amounts differ by > 25% (m)=manual int.

Data Path : Z:\pestpcbsrv\HPCHEM1\ECD_D\Data\PD050223\
 Data File : PD075114.D
 Signal(s) : Signal #1: ECD1A.ch Signal #2: ECD2B.ch
 Acq On : 02 May 2023 14:19
 Operator : AR\AJ
 Sample : 02417-08DL 20X
 Misc :
 ALS Vial : 23 Sample Multiplier: 1

Integration File signal 1: autoint1.e
 Integration File signal 2: autoint2.e
 Quant Time: May 03 01:52:16 2023
 Quant Method : Z:\pestpcbsrv\HPCHEM1\ECD_D\Method\PD042723CLP.M
 Quant Title : GC Extractables
 QLast Update : Fri Apr 28 02:34:46 2023
 Response via : Initial Calibration
 Integrator: ChemStation

Volume Inj. : 1 µl
 Signal #1 Phase : ZB-MR1 Signal #2 Phase: ZB-MR2
 Signal #1 Info : 30M x 0.32mm x 0.5 Signal #2 Info : 30M x 0.32mm x 0.25µm



Instrument : ECD_D
 Client Sampled : EW8X4DL
 Manual Integrations APPROVED
 Reviewed By : Abdul Mirza 05/04/2023
 Supervised By : Ankitia Jodhani 05/04/2023