

Data Path : Z:\pestpcbsrv\HPCHEM1\ECD_D\Data\PD050225\
 Data File : PD088401.D
 Signal(s) : Signal #1: ECD1A.ch Signal #2: ECD2B.ch
 Acq On : 02 May 2025 15:17
 Operator : AR\AJ
 Sample : Q1935-01
 Misc :
 ALS Vial : 17 Sample Multiplier: 1

Instrument :
 ECD_D
 ClientSampleId :
 MH-NN

Integration File signal 1: autoint1.e
 Integration File signal 2: autoint2.e
 Quant Time: May 02 22:54:54 2025
 Quant Method : Z:\pestpcbsrv\HPCHEM1\ECD_D\Method\PD041825.M
 Quant Title : GC Extractables
 QLast Update : Sat Apr 19 06:32:27 2025
 Response via : Initial Calibration
 Integrator: ChemStation

Volume Inj. : 1 µl
 Signal #1 Phase : ZB-MR1 Signal #2 Phase: ZB-MR2
 Signal #1 Info : 30M x 0.32mm x0.5 Signal #2 Info : 30M x 0.32mm x 0.25µm

	Compound	RT#1	RT#2	Resp#1	Resp#2	ng/ml	ng/ml

System Monitoring Compounds							
1)	SA Tetrachlo...	3.550	2.882	38221706	277.1E6	19.136	18.954
28)	SA Decachlor...	9.076	8.076	54469957	274.2E6	16.466	14.839
Target Compounds							
2)	A alpha-BHC	0.000	3.387	0	1375322	N.D.	0.060 #
3)	MA gamma-BHC...	4.335	3.735	686618	5491775	0.164	0.255 #
4)	MA Heptachlor	4.942	4.072	694051	4472654	0.172	0.209
5)	MB Aldrin	5.293f	4.401f	19706	624550	0.005	0.030 #
6)	B beta-BHC	4.498f	4.040	1036489	3021092	0.638	0.326 #
7)	B delta-BHC	4.779	4.272	9724595	1991553	2.357	0.094 #
8)	Heptachlo...	5.702	4.893f	2798100	1114261	0.783	0.059 #
9)	A Endosulfan I	6.100f	5.271f	774396	6850336	0.229	0.380 #
10)	B gamma-Chl...	5.917f	5.125	1777405	3192113	0.491	0.157 #
11)	B alpha-Chl...	6.038	5.211f	1099788	7180331	0.305	0.366
12)	B 4,4'-DDE	6.197	5.405f	207936	17657869	0.063	0.897 #
13)	MA Dieldrin	0.000	5.514	0	7165331	N.D.	0.359 #
14)	MA Endrin	0.000	5.798	0	5170751	N.D.	0.284 #
15)	B Endosulfa...	6.785	6.076	130493	4682260	0.042	0.267 #
16)	A 4,4'-DDD	6.697	0.000	353000	0	0.140	N.D. #
17)	MA 4,4'-DDT	7.030	6.194	67611	6549886	0.024	0.385 #
18)	B Endrin al...	6.925	6.267	142504	2257815	0.062	0.170 #
19)	B Endosulfa...	0.000	6.500	0	571876	N.D.	0.033 #
22)	Mirex	0.000	7.178	0	3768920	N.D.	0.254 #
23)	Chlordane-1	4.688f	3.911	3110504	13924132	18.722	17.368
24)	Chlordane-2	5.221f	4.508	1145579	795289	6.879	0.964 #
25)	Chlordane-3	0.000	5.125	0	3192113	N.D.	1.262 #
26)	Chlordane-4	6.038	5.211	1099788	7180331	1.349	3.358 #
27)	Chlordane-5	0.000	6.104	0	1938793	N.D.	2.008 #

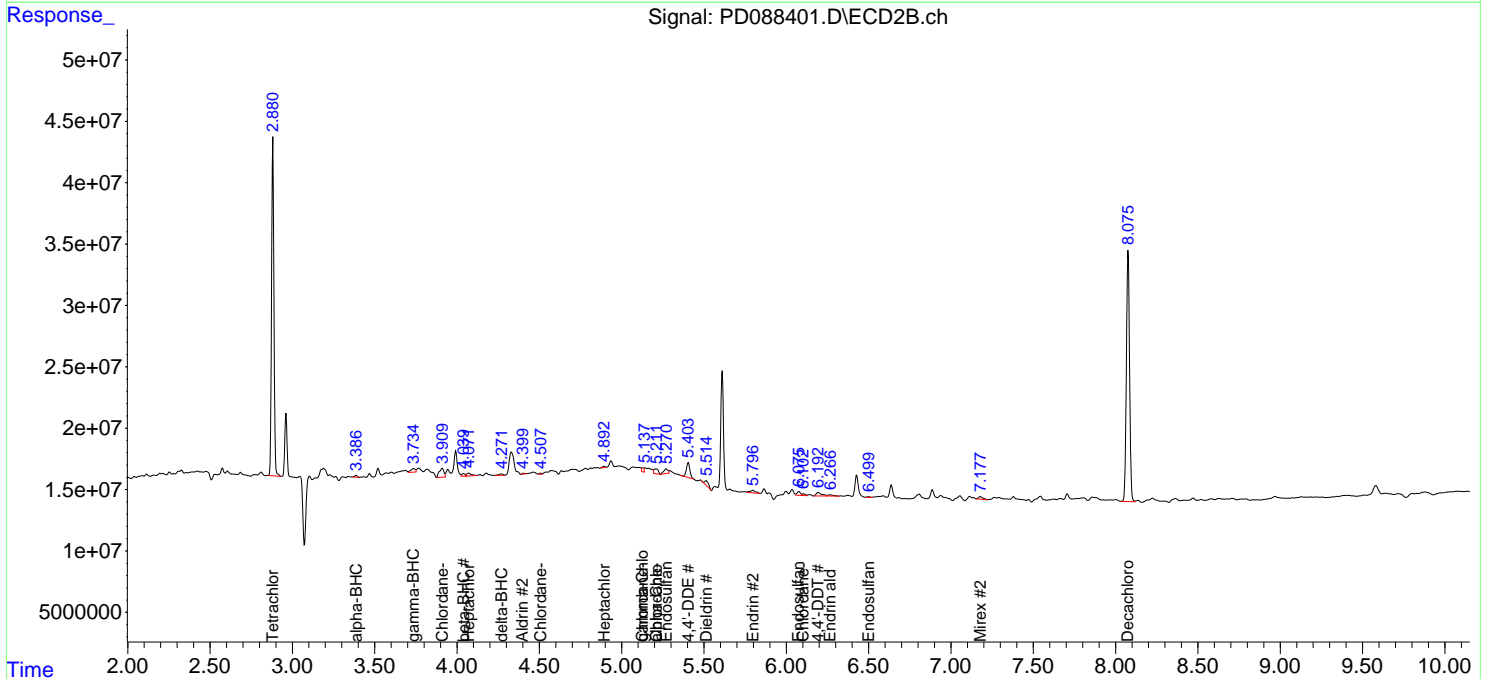
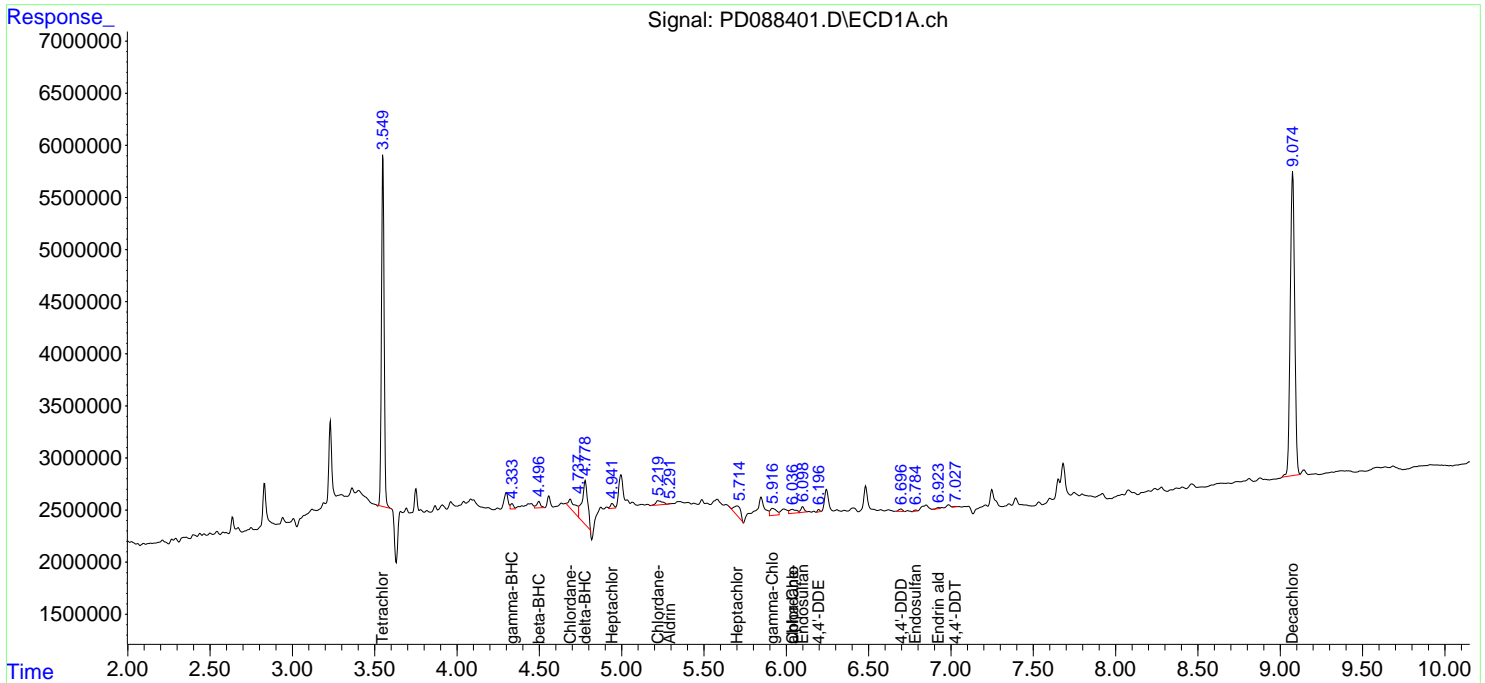
(f)=RT Delta > 1/2 Window (#)=Amounts differ by > 25% (m)=manual int.

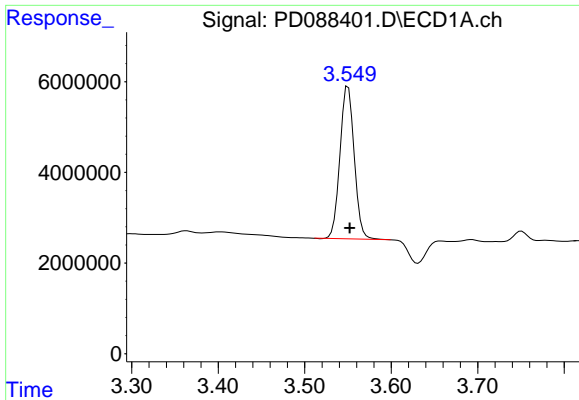
Data Path : Z:\pestpcbsrv\HPCHEM1\ECD_D\Data\PD050225\
 Data File : PD088401.D
 Signal(s) : Signal #1: ECD1A.ch Signal #2: ECD2B.ch
 Acq On : 02 May 2025 15:17
 Operator : AR\AJ
 Sample : Q1935-01
 Misc :
 ALS Vial : 17 Sample Multiplier: 1

Instrument :
 ECD_D
 ClientSampleId :
 MH-NN

Integration File signal 1: autoint1.e
 Integration File signal 2: autoint2.e
 Quant Time: May 02 22:54:54 2025
 Quant Method : Z:\pestpcbsrv\HPCHEM1\ECD_D\Method\PD041825.M
 Quant Title : GC Extractables
 QLast Update : Sat Apr 19 06:32:27 2025
 Response via : Initial Calibration
 Integrator: ChemStation

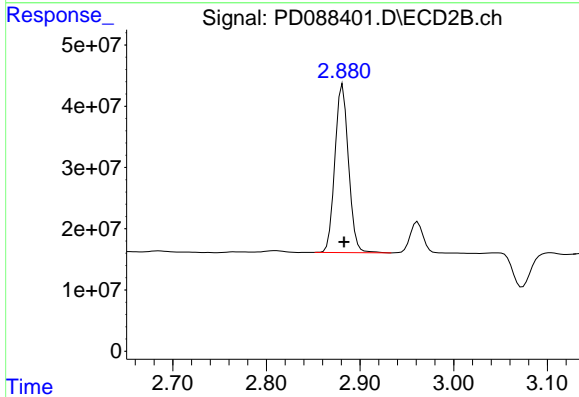
Volume Inj. : 1 µl
 Signal #1 Phase : ZB-MR1 Signal #2 Phase: ZB-MR2
 Signal #1 Info : 30M x 0.32mm x0.5 Signal #2 Info : 30M x 0.32mm x 0.25µm



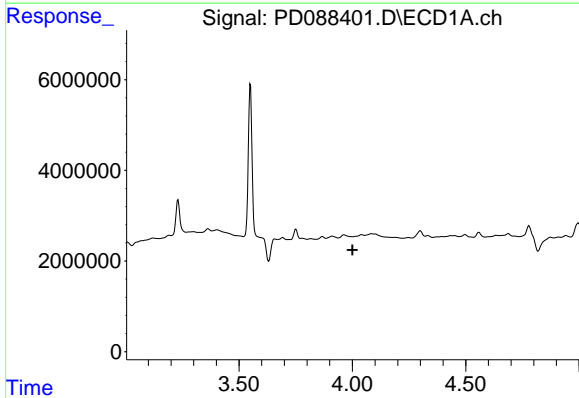


#1 Tetrachloro-m-xylene
 R.T.: 3.550 min
 Delta R.T.: -0.002 min
 Response: 38221706
 Conc: 19.14 ng/ml

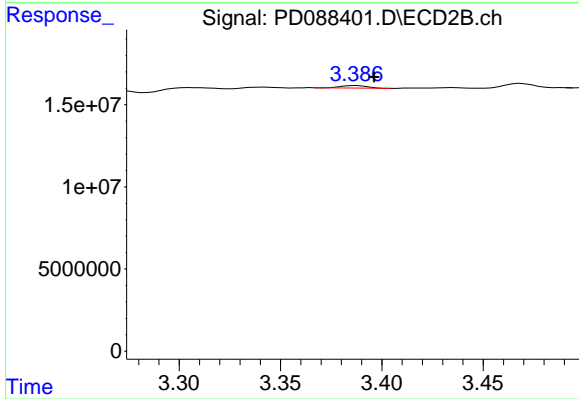
Instrument :
 ECD_D
 ClientSampleId :
 MH-NN



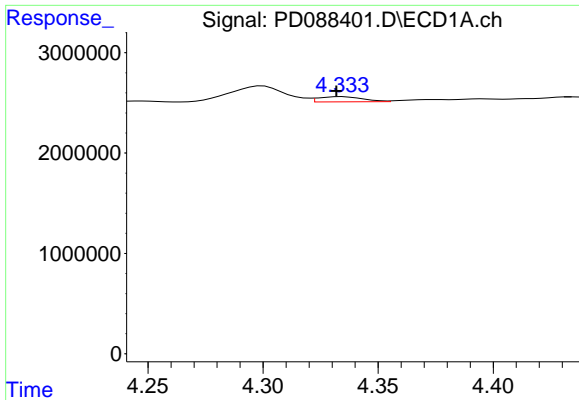
#1 Tetrachloro-m-xylene
 R.T.: 2.882 min
 Delta R.T.: -0.001 min
 Response: 277138585
 Conc: 18.95 ng/ml



#2 alpha-BHC
 R.T.: 0.000 min
 Exp R.T. : 4.001 min
 Response: 0
 Conc: N.D.

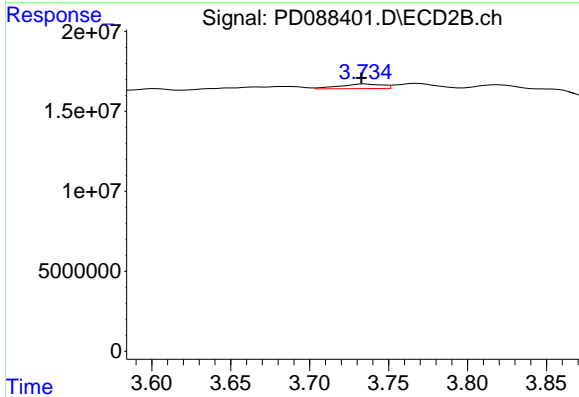


#2 alpha-BHC
 R.T.: 3.387 min
 Delta R.T.: -0.009 min
 Response: 1375322
 Conc: 0.06 ng/ml

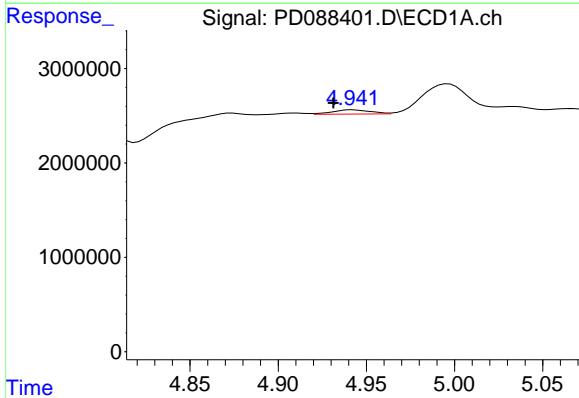


#3 gamma-BHC (Lindane)
 R.T.: 4.335 min
 Delta R.T.: 0.003 min
 Response: 686618
 Conc: 0.16 ng/ml

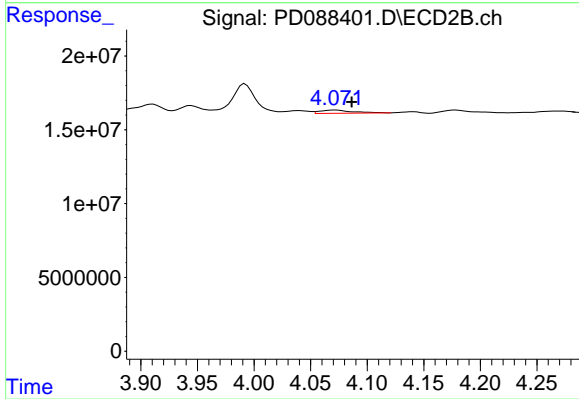
Instrument :
 ECD_D
 ClientSampleId :
 MH-NN



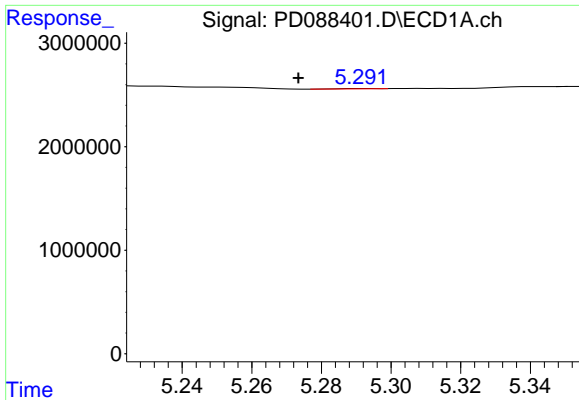
#3 gamma-BHC (Lindane)
 R.T.: 3.735 min
 Delta R.T.: 0.002 min
 Response: 5491775
 Conc: 0.25 ng/ml



#4 Heptachlor
 R.T.: 4.942 min
 Delta R.T.: 0.011 min
 Response: 694051
 Conc: 0.17 ng/ml

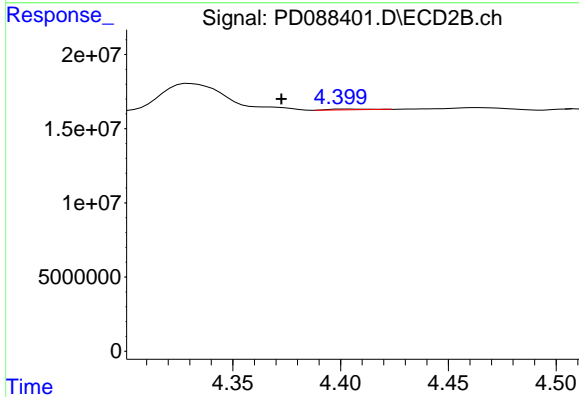


#4 Heptachlor
 R.T.: 4.072 min
 Delta R.T.: -0.014 min
 Response: 4472654
 Conc: 0.21 ng/ml

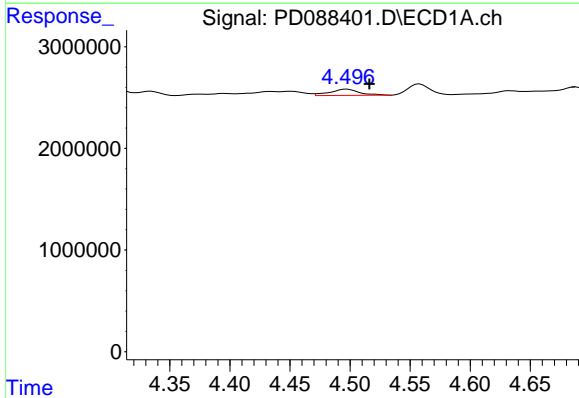


#5 Aldrin
 R.T.: 5.293 min
 Delta R.T.: 0.019 min
 Response: 19706
 Conc: 0.00 ng/ml

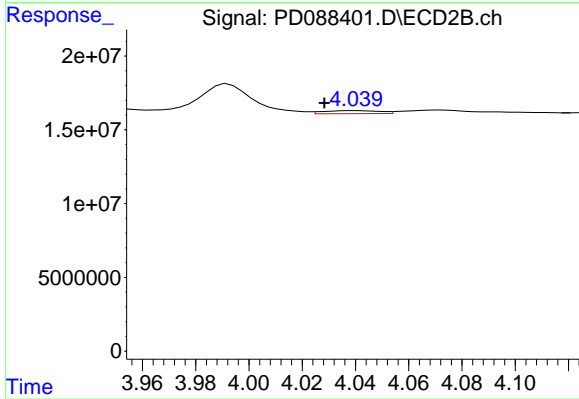
Instrument :
 ECD_D
 ClientSampleId :
 MH-NN



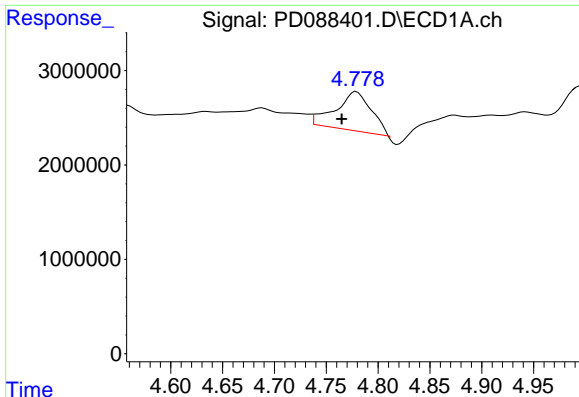
#5 Aldrin
 R.T.: 4.401 min
 Delta R.T.: 0.028 min
 Response: 624550
 Conc: 0.03 ng/ml



#6 beta-BHC
 R.T.: 4.498 min
 Delta R.T.: -0.019 min
 Response: 1036489
 Conc: 0.64 ng/ml



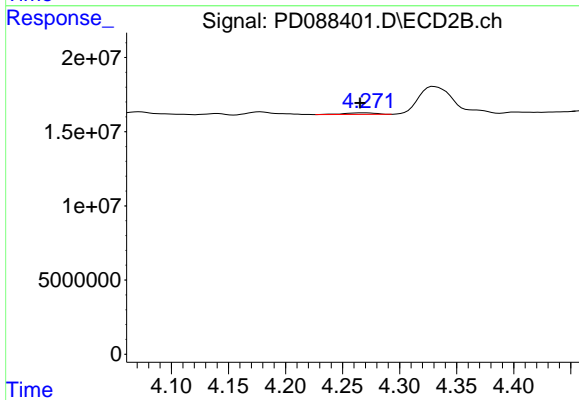
#6 beta-BHC
 R.T.: 4.040 min
 Delta R.T.: 0.012 min
 Response: 3021092
 Conc: 0.33 ng/ml



#7 delta-BHC

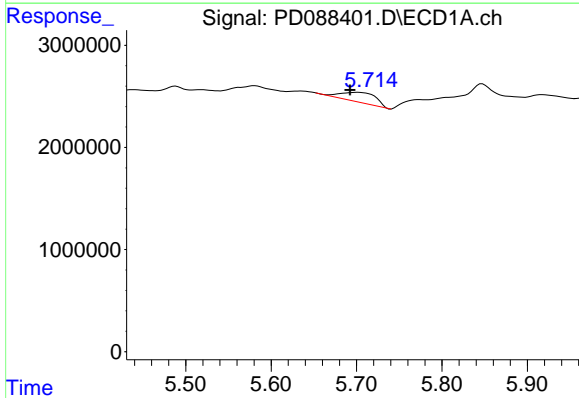
R.T.: 4.779 min
 Delta R.T.: 0.014 min
 Response: 9724595
 Conc: 2.36 ng/ml

Instrument :
 ECD_D
 ClientSampleId :
 MH-NN



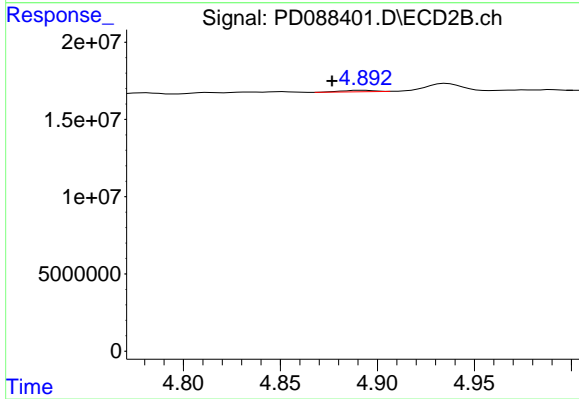
#7 delta-BHC

R.T.: 4.272 min
 Delta R.T.: 0.006 min
 Response: 1991553
 Conc: 0.09 ng/ml



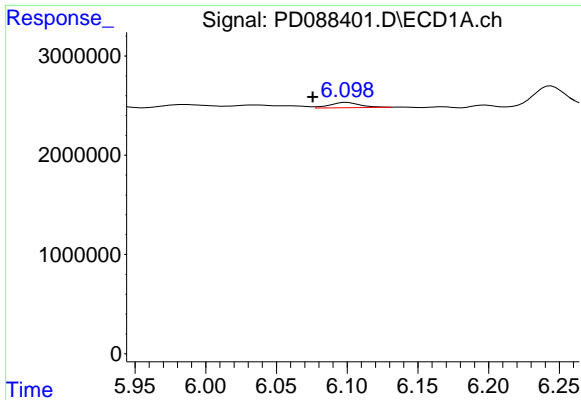
#8 Heptachlor epoxide

R.T.: 5.702 min
 Delta R.T.: 0.010 min
 Response: 2798100
 Conc: 0.78 ng/ml



#8 Heptachlor epoxide

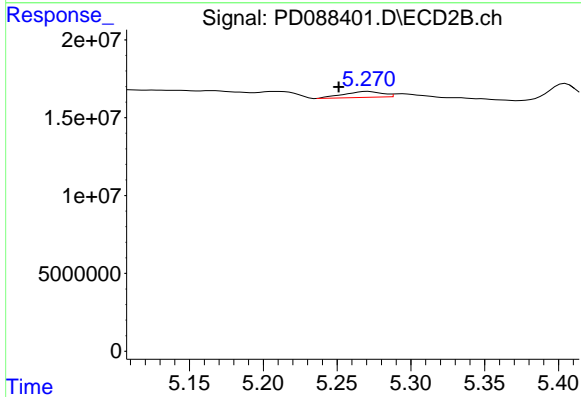
R.T.: 4.893 min
 Delta R.T.: 0.017 min
 Response: 1114261
 Conc: 0.06 ng/ml



#9 Endosulfan I

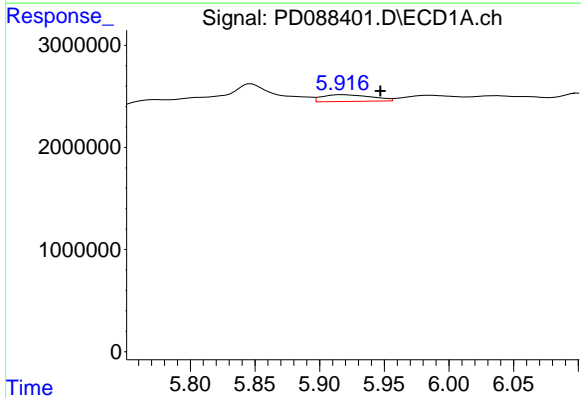
R.T.: 6.100 min
 Delta R.T.: 0.024 min
 Response: 774396
 Conc: 0.23 ng/ml

Instrument :
 ECD_D
 ClientSampleId :
 MH-NN



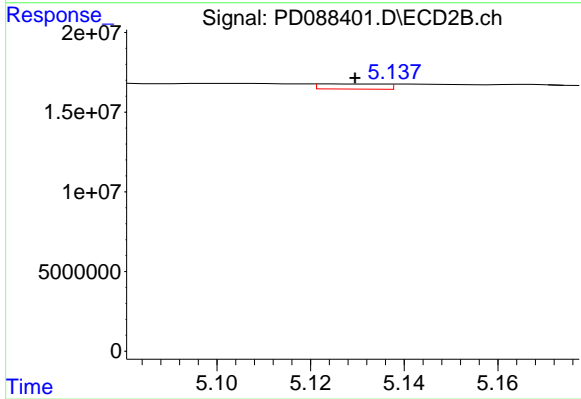
#9 Endosulfan I

R.T.: 5.271 min
 Delta R.T.: 0.020 min
 Response: 6850336
 Conc: 0.38 ng/ml



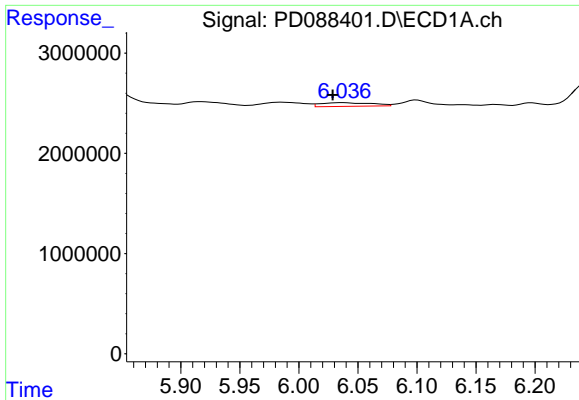
#10 gamma-Chlordane

R.T.: 5.917 min
 Delta R.T.: -0.030 min
 Response: 1777405
 Conc: 0.49 ng/ml



#10 gamma-Chlordane

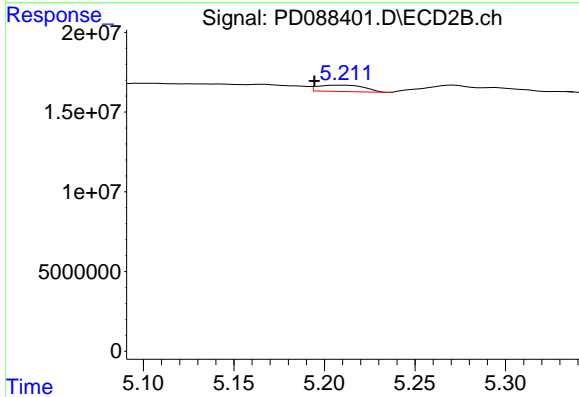
R.T.: 5.125 min
 Delta R.T.: -0.004 min
 Response: 3192113
 Conc: 0.16 ng/ml



#11 alpha-Chlordane

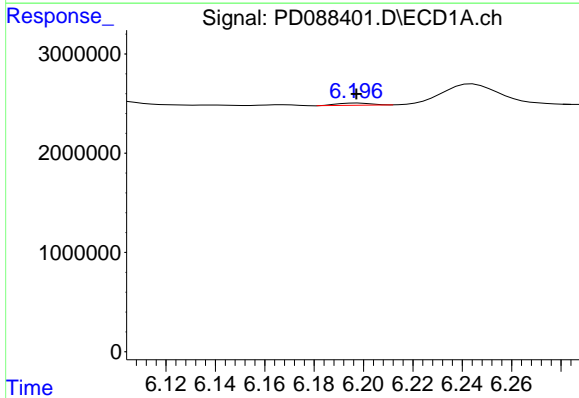
R.T.: 6.038 min
 Delta R.T.: 0.009 min
 Response: 1099788
 Conc: 0.30 ng/ml

Instrument : ECD_D
 ClientSampleId : MH-NN



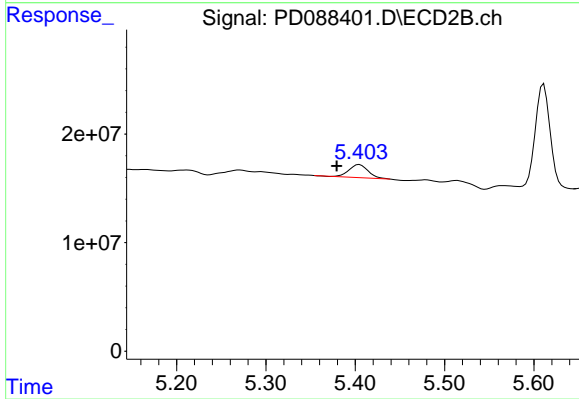
#11 alpha-Chlordane

R.T.: 5.211 min
 Delta R.T.: 0.017 min
 Response: 7180331
 Conc: 0.37 ng/ml



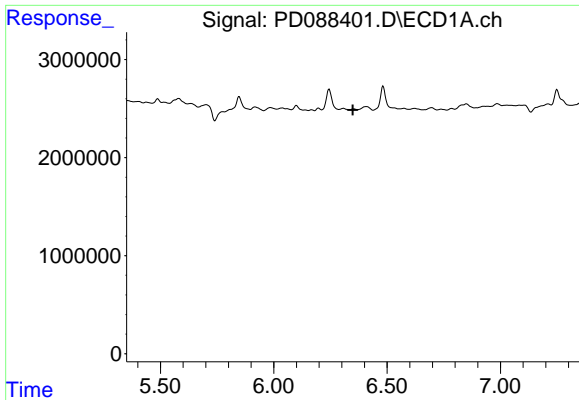
#12 4,4'-DDE

R.T.: 6.197 min
 Delta R.T.: 0.000 min
 Response: 207936
 Conc: 0.06 ng/ml



#12 4,4'-DDE

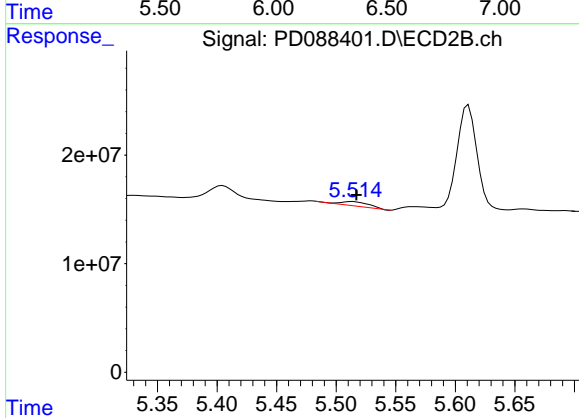
R.T.: 5.405 min
 Delta R.T.: 0.025 min
 Response: 17657869
 Conc: 0.90 ng/ml



#13 Dieldrin

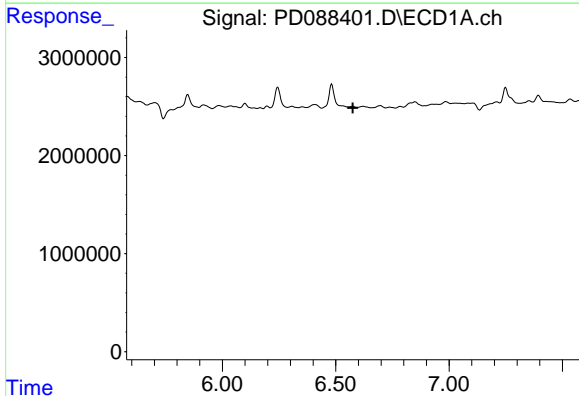
R.T.: 0.000 min
 Exp R.T. : 6.349 min
 Response: 0
 Conc: N.D.

Instrument :
 ECD_D
 ClientSampleId :
 MH-NN



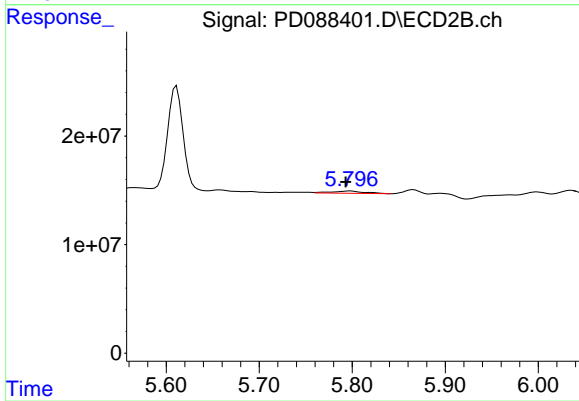
#13 Dieldrin

R.T.: 5.514 min
 Delta R.T.: -0.003 min
 Response: 7165331
 Conc: 0.36 ng/ml



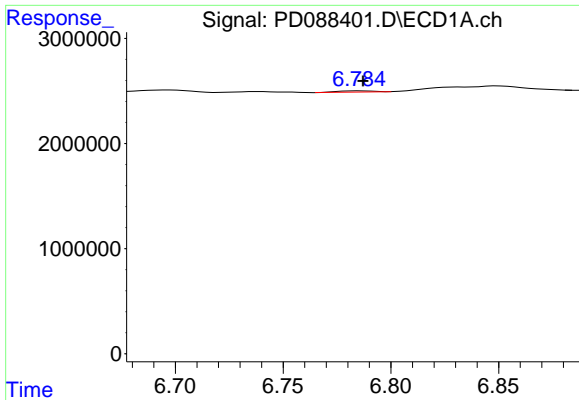
#14 Endrin

R.T.: 0.000 min
 Exp R.T. : 6.576 min
 Response: 0
 Conc: N.D.



#14 Endrin

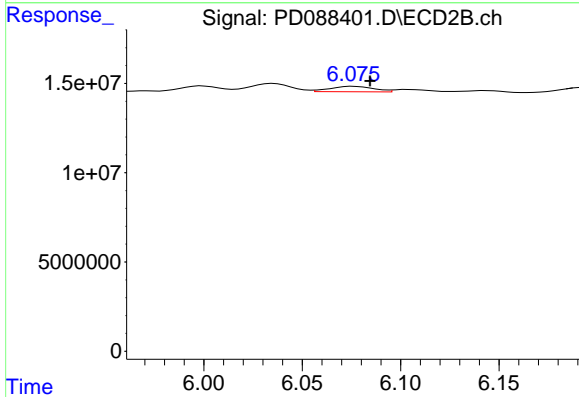
R.T.: 5.798 min
 Delta R.T.: 0.005 min
 Response: 5170751
 Conc: 0.28 ng/ml



#15 Endosulfan II

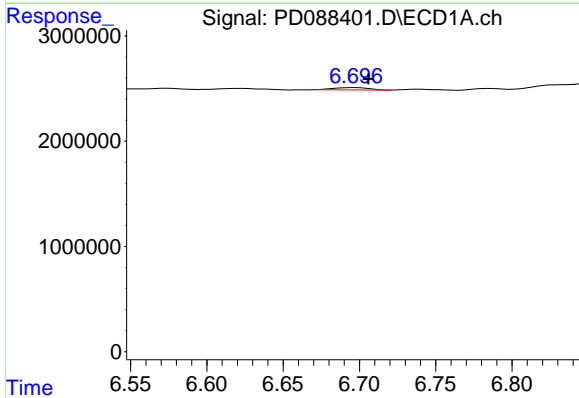
R.T.: 6.785 min
 Delta R.T.: -0.002 min
 Response: 130493
 Conc: 0.04 ng/ml

Instrument :
 ECD_D
 ClientSampleId :
 MH-NN



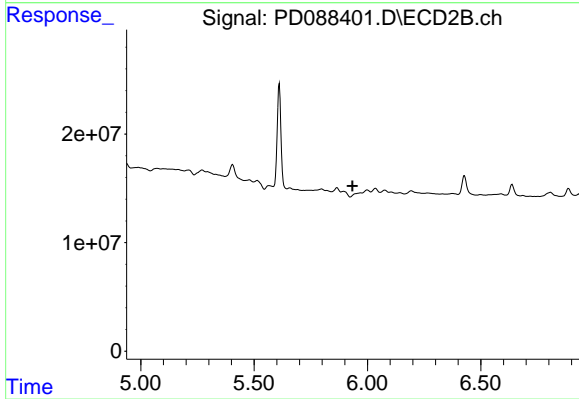
#15 Endosulfan II

R.T.: 6.076 min
 Delta R.T.: -0.008 min
 Response: 4682260
 Conc: 0.27 ng/ml



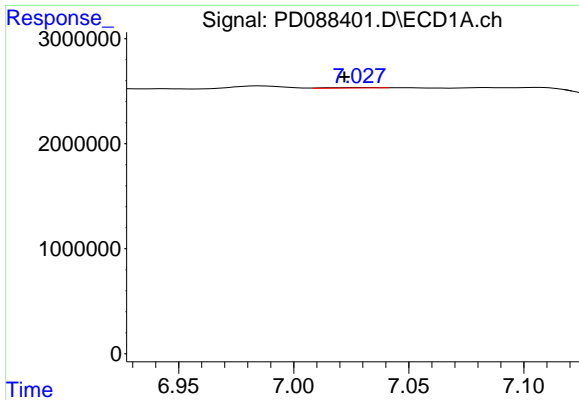
#16 4,4'-DDD

R.T.: 6.697 min
 Delta R.T.: -0.009 min
 Response: 353000
 Conc: 0.14 ng/ml



#16 4,4'-DDD

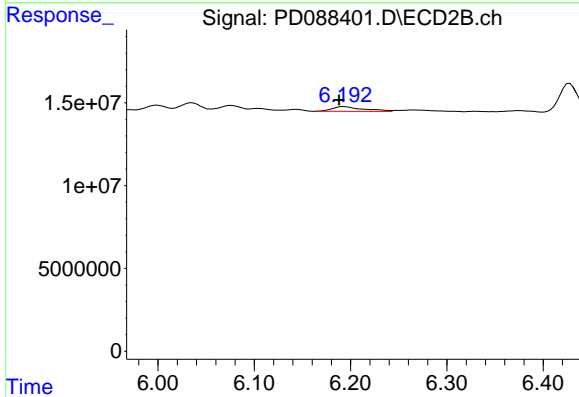
R.T.: 0.000 min
 Exp R.T. : 5.934 min
 Response: 0
 Conc: N.D.



#17 4,4'-DDT

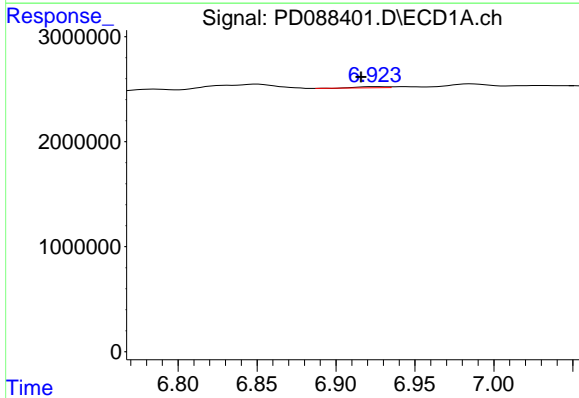
R.T.: 7.030 min
 Delta R.T.: 0.008 min
 Response: 67611
 Conc: 0.02 ng/ml

Instrument : ECD_D
 ClientSampleId : MH-NN



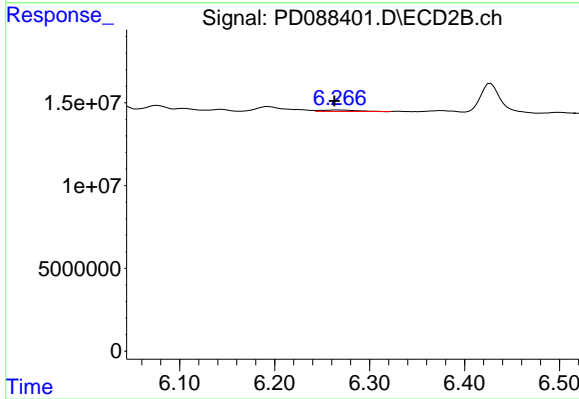
#17 4,4'-DDT

R.T.: 6.194 min
 Delta R.T.: 0.006 min
 Response: 6549886
 Conc: 0.38 ng/ml



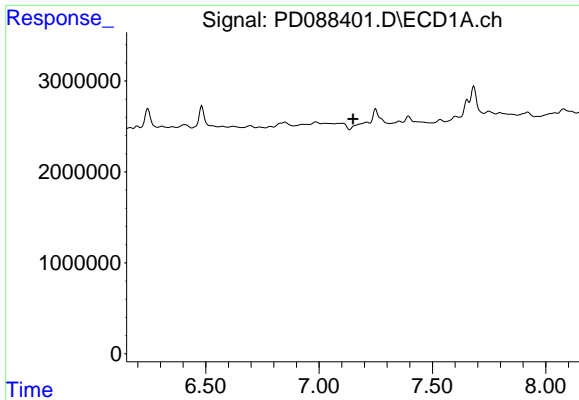
#18 Endrin aldehyde

R.T.: 6.925 min
 Delta R.T.: 0.008 min
 Response: 142504
 Conc: 0.06 ng/ml



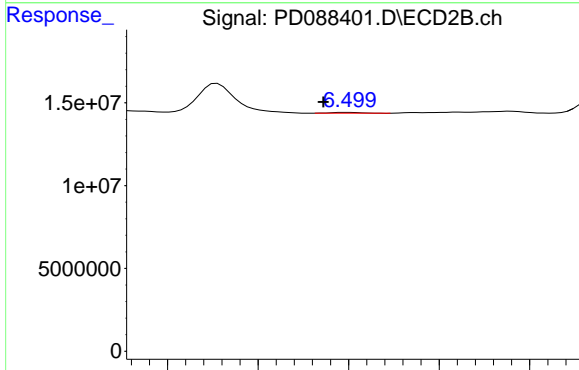
#18 Endrin aldehyde

R.T.: 6.267 min
 Delta R.T.: 0.004 min
 Response: 2257815
 Conc: 0.17 ng/ml

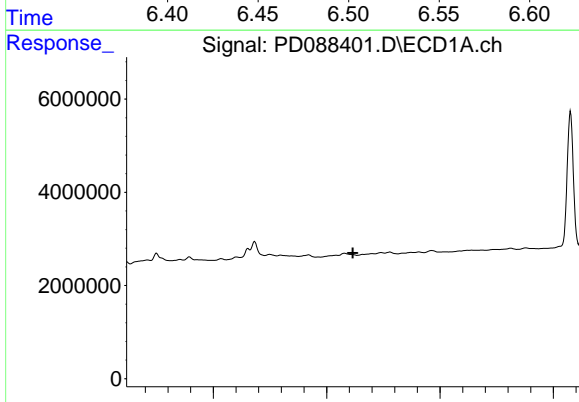


#19 Endosulfan Sulfate
 R.T.: 0.000 min
 Exp R.T.: 7.150 min
 Response: 0
 Conc: N.D.

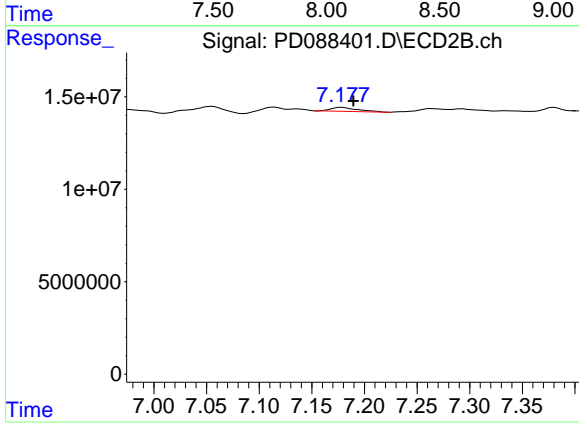
Instrument : ECD_D
 ClientSampleId : MH-NN



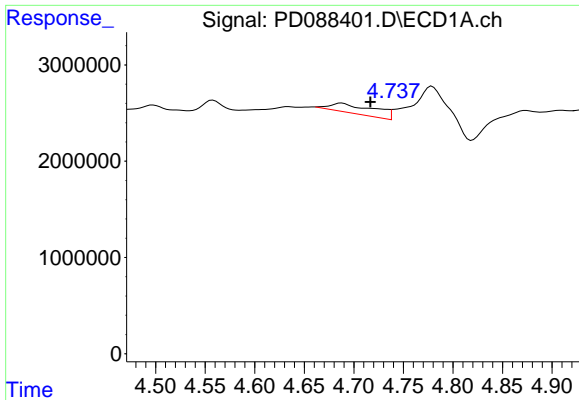
#19 Endosulfan Sulfate
 R.T.: 6.500 min
 Delta R.T.: 0.014 min
 Response: 571876
 Conc: 0.03 ng/ml



#22 Mirex
 R.T.: 0.000 min
 Exp R.T.: 8.115 min
 Response: 0
 Conc: N.D.



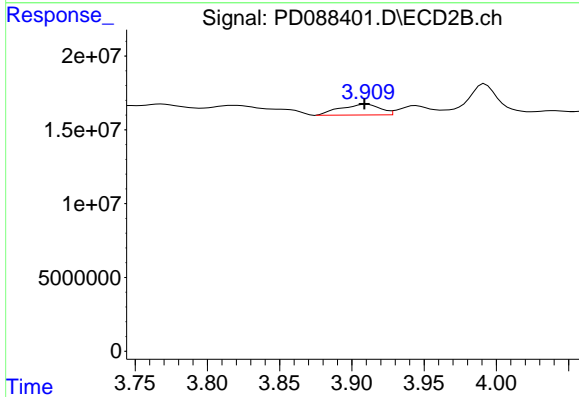
#22 Mirex
 R.T.: 7.178 min
 Delta R.T.: -0.011 min
 Response: 3768920
 Conc: 0.25 ng/ml



#23 Chlordane-1

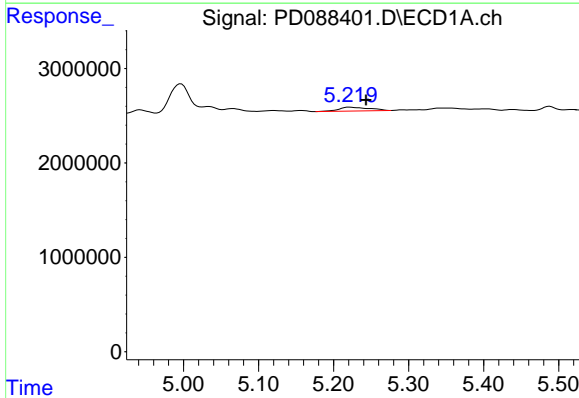
R.T.: 4.688 min
 Delta R.T.: -0.029 min
 Response: 3110504
 Conc: 18.72 ng/ml

Instrument :
 ECD_D
 ClientSampleId :
 MH-NN



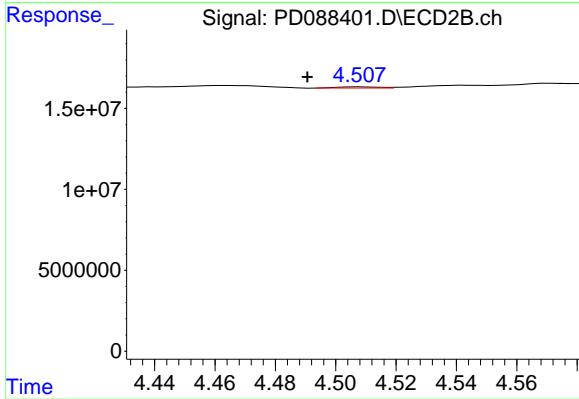
#23 Chlordane-1

R.T.: 3.911 min
 Delta R.T.: 0.002 min
 Response: 13924132
 Conc: 17.37 ng/ml



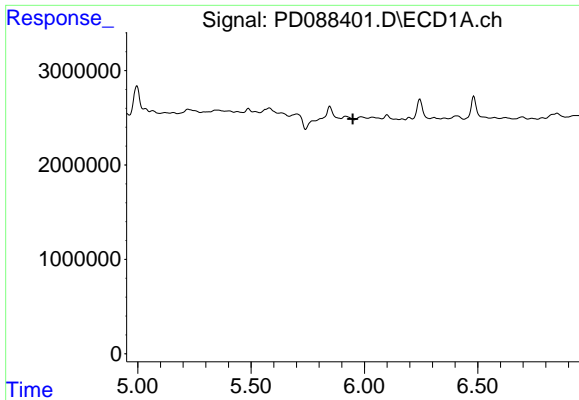
#24 Chlordane-2

R.T.: 5.221 min
 Delta R.T.: -0.022 min
 Response: 1145579
 Conc: 6.88 ng/ml



#24 Chlordane-2

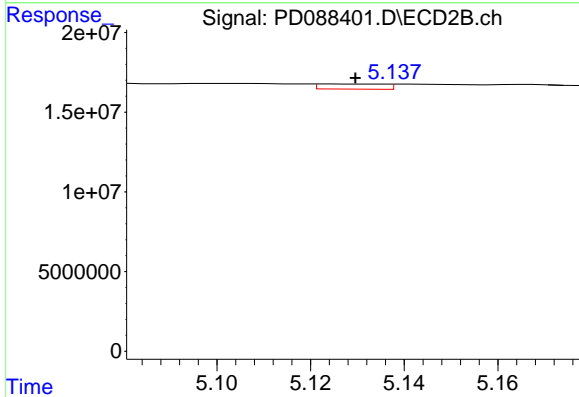
R.T.: 4.508 min
 Delta R.T.: 0.018 min
 Response: 795289
 Conc: 0.96 ng/ml



#25 Chlordane-3

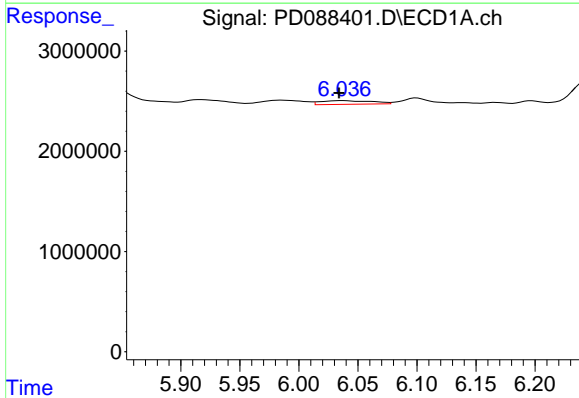
R.T.: 0.000 min
 Exp R.T.: 5.948 min
 Response: 0
 Conc: N.D.

Instrument :
 ECD_D
 ClientSampleId :
 MH-NN



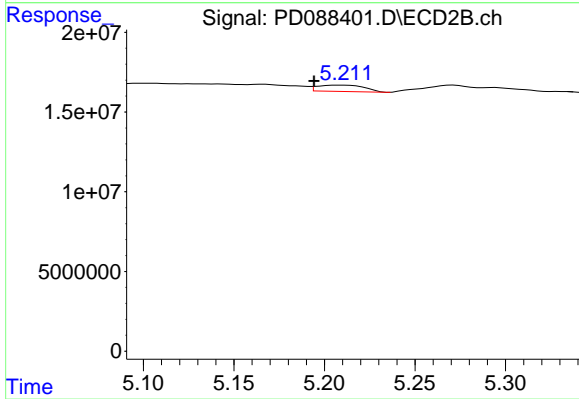
#25 Chlordane-3

R.T.: 5.125 min
 Delta R.T.: -0.004 min
 Response: 3192113
 Conc: 1.26 ng/ml



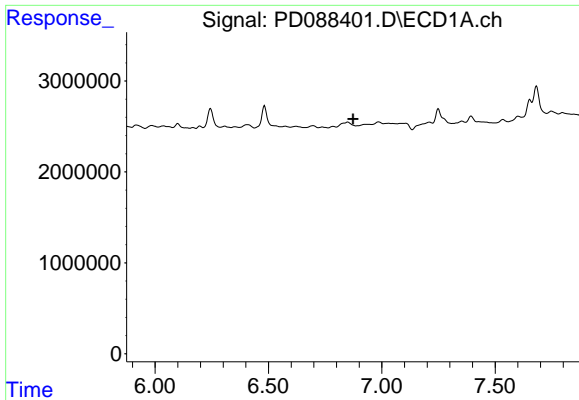
#26 Chlordane-4

R.T.: 6.038 min
 Delta R.T.: 0.004 min
 Response: 1099788
 Conc: 1.35 ng/ml



#26 Chlordane-4

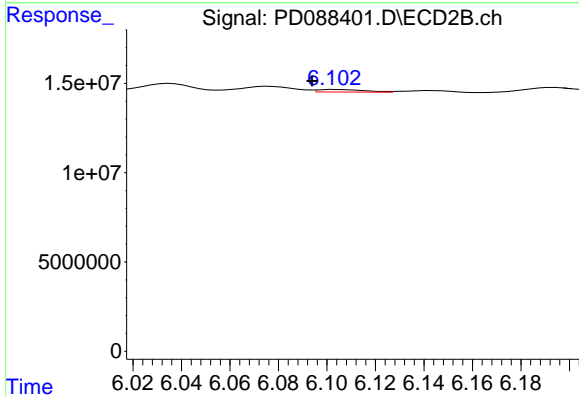
R.T.: 5.211 min
 Delta R.T.: 0.017 min
 Response: 7180331
 Conc: 3.36 ng/ml



#27 Chlordane-5

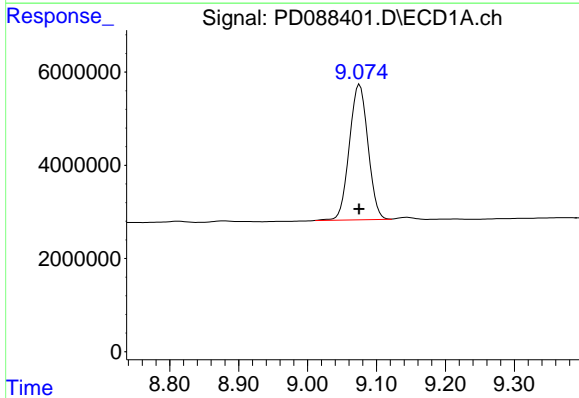
R.T.: 0.000 min
 Exp R.T.: 6.873 min
 Response: 0
 Conc: N.D.

Instrument :
 ECD_D
 ClientSampleId :
 MH-NN



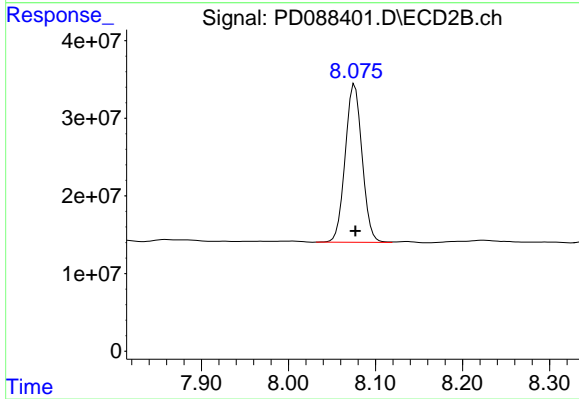
#27 Chlordane-5

R.T.: 6.104 min
 Delta R.T.: 0.010 min
 Response: 1938793
 Conc: 2.01 ng/ml



#28 Decachlorobiphenyl

R.T.: 9.076 min
 Delta R.T.: 0.000 min
 Response: 54469957
 Conc: 16.47 ng/ml



#28 Decachlorobiphenyl

R.T.: 8.076 min
 Delta R.T.: 0.000 min
 Response: 274223913
 Conc: 14.84 ng/ml