

Data Path : Z:\pestpcbsrv\HPCHEM1\ECD_D\Data\PD050322\
 Data File : PD069390.D
 Signal(s) : Signal #1: ECD1A.ch Signal #2: ECD2B.ch
 Acq On : 03 May 2022 13:02
 Operator : AR\AJ
 Sample : N2652-11
 Misc :
 ALS Vial : 14 Sample Multiplier: 1

Instrument :
 ECD_D
 ClientSampleId :

Integration File signal 1: autoint1.e
 Integration File signal 2: autoint2.e
 Quant Time: May 04 01:11:54 2022
 Quant Method : Z:\pestpcbsrv\HPCHEM1\ECD_D\Method\PD041422CLP.M
 Quant Title : GC Extractables
 QLast Update : Thu Apr 21 02:24:30 2022
 Response via : Initial Calibration
 Integrator: ChemStation

Volume Inj. : 1 µl
 Signal #1 Phase : ZB-MR1 Signal #2 Phase: ZB-MR1
 Signal #1 Info : 30M x 0.32mm x0.2 Signal #2 Info : 30M x 0.32mm x 0.50µm

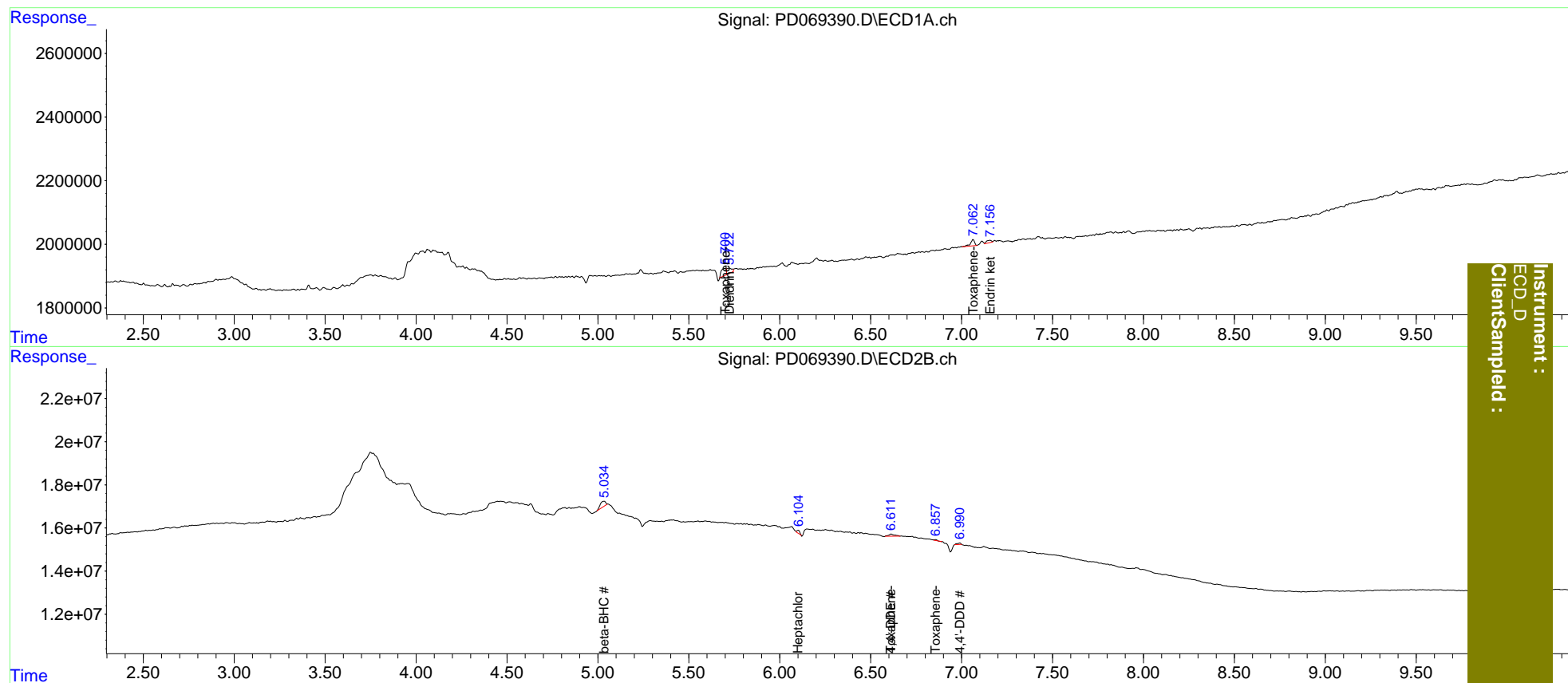
Compound	RT#1	RT#2	Resp#1	Resp#2	ng/ml	ng/ml
System Monitoring Compounds						
1) SA Tetrachlo...	3.410f	4.192	71112	34013	<MDL	<MDL #
27) SA Decachlor...	0.000	9.367	0	175732	N.D.	<MDL
Target Compounds						
2) A alpha-BHC	0.000	4.580	0	324329	N.D.	<MDL
3) MA gamma-BHC...	0.000	4.843	0	222760	N.D.	<MDL
5) MB Aldrin	0.000	5.704	0	405878	N.D.	<MDL
6) B beta-BHC	0.000	5.034	0	5594078	N.D.	0.834
7) B delta-BHC	0.000	5.290f	0	856479	N.D.	<MDL
8) B Heptachlo...	0.000	6.102	0	1331598	N.D.	0.120
9) A Endosulfan I	0.000	6.433	0	767593	N.D.	<MDL
10) B trans-Chl...	0.000	6.334	0	228791	N.D.	<MDL
11) B cis-Chlor...	0.000	6.386	0	335559	N.D.	<MDL
12) B 4,4'-DDE	0.000	6.614f	0	2183748	N.D.	0.201
13) MA Dieldrin	5.723	0.000	311446	0	0.200	N.D. #
14) MA Endrin	0.000	6.991f	0	961629	N.D.	<MDL
15) B Endosulfa...	0.000	7.124	0	828739	N.D.	<MDL
16) A 4,4'-DDD	0.000	6.991f	0	961629	N.D.	0.103
21) B Endrin ke...	7.157	7.961	149781	663562	0.104	<MDL #
22) Toxaphene-1	5.701	6.614	417466	2183748	44.457	46.293
23) Toxaphene-2	0.000	6.858f	0	171659	N.D.	1.623
26) Toxaphene-5	7.064	0.000	297933	0	10.986	N.D. #

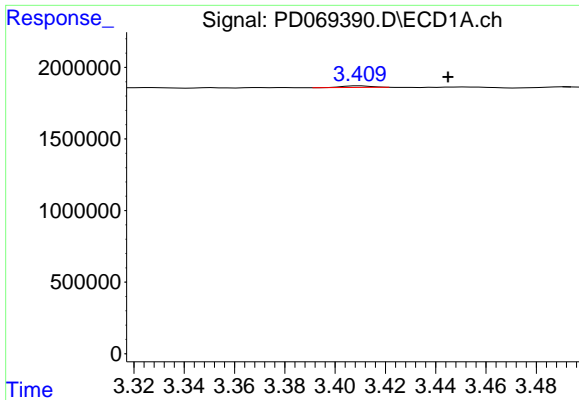
(f)=RT Delta > 1/2 Window (#)=Amounts differ by > 25% (m)=manual int.

Data Path : Z:\pestpcbsrv\HPCHEM1\ECD_D\Data\PD050322\
 Data File : PD069390.D
 Signal(s) : Signal #1: ECD1A.ch Signal #2: ECD2B.ch
 Acq On : 03 May 2022 13:02
 Operator : AR\AJ
 Sample : N2652-11
 Misc :
 ALS Vial : 14 Sample Multiplier: 1

Integration File signal 1: autoint1.e
 Integration File signal 2: autoint2.e
 Quant Time: May 04 01:11:54 2022
 Quant Method : Z:\pestpcbsrv\HPCHEM1\ECD_D\Method\PD041422CLP.M
 Quant Title : GC Extractables
 QLast Update : Thu Apr 21 02:24:30 2022
 Response via : Initial Calibration
 Integrator: ChemStation

Volume Inj. : 1 µl
 Signal #1 Phase : ZB-MR2 Signal #2 Phase: ZB-MR1
 Signal #1 Info : 30M x 0.32mm x0.2 Signal #2 Info : 30M x 0.32mm x 0.50µm

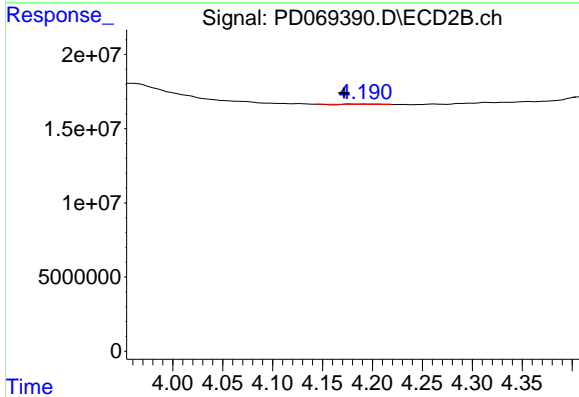




#1 Tetrachloro-m-xylene

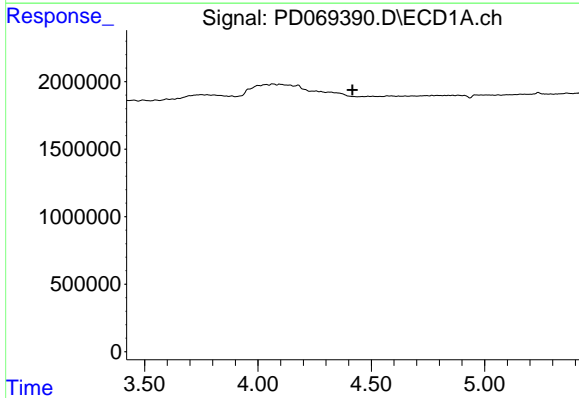
R.T.: 3.410 min
 Delta R.T.: -0.035 min
 Response: 71112
 Conc: N.D.

Instrument :
 ECD_D
 ClientSampleId :



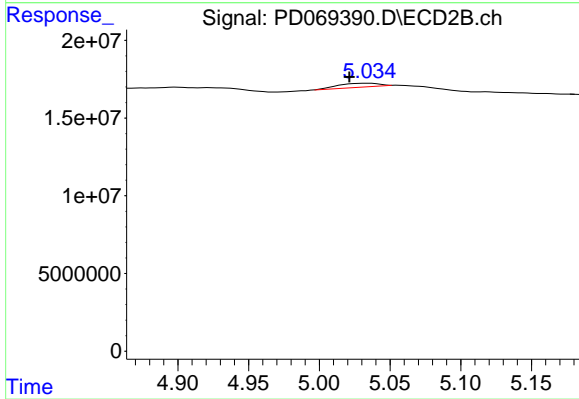
#1 Tetrachloro-m-xylene

R.T.: 4.192 min
 Delta R.T.: 0.020 min
 Response: 34013
 Conc: N.D.



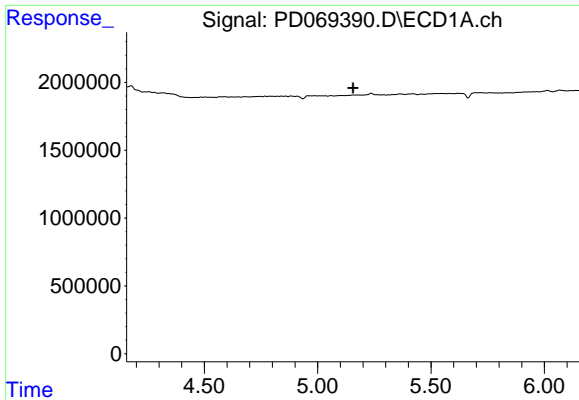
#6 beta-BHC

R.T.: 0.000 min
 Exp R.T. : 4.417 min
 Response: 0
 Conc: N.D.



#6 beta-BHC

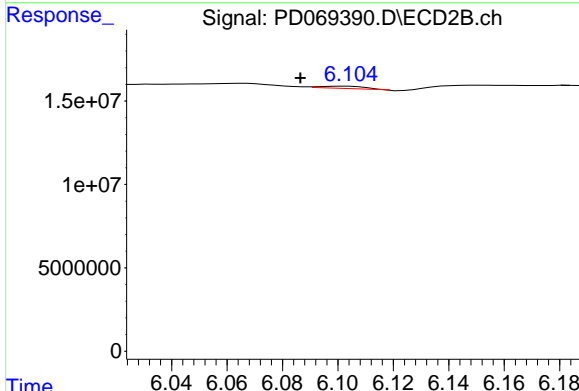
R.T.: 5.034 min
 Delta R.T.: 0.013 min
 Response: 5594078
 Conc: 0.83 ng/ml



#8 Heptachlor epoxide

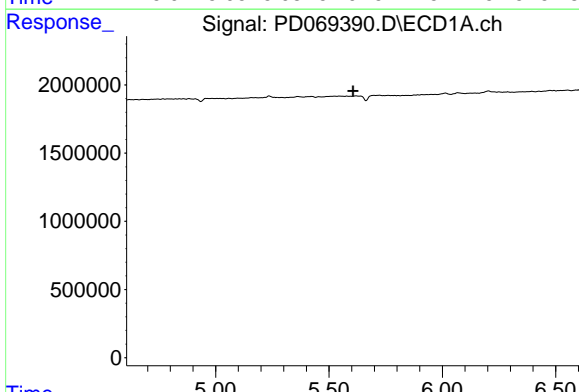
R.T.: 0.000 min
 Exp R.T.: 5.157 min
 Response: 0
 Conc: N.D.

Instrument :
 ECD_D
 ClientSampleId :



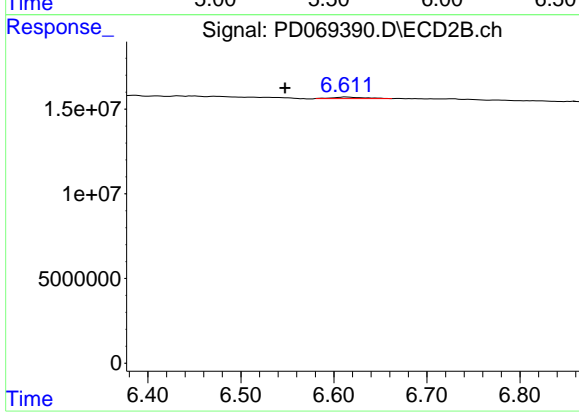
#8 Heptachlor epoxide

R.T.: 6.102 min
 Delta R.T.: 0.016 min
 Response: 1331598
 Conc: 0.12 ng/ml



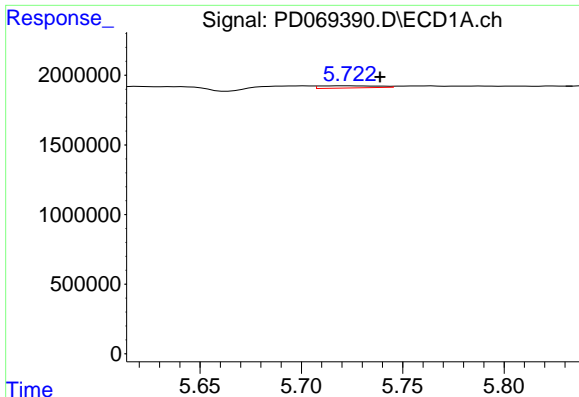
#12 4,4'-DDE

R.T.: 0.000 min
 Exp R.T.: 5.606 min
 Response: 0
 Conc: N.D.



#12 4,4'-DDE

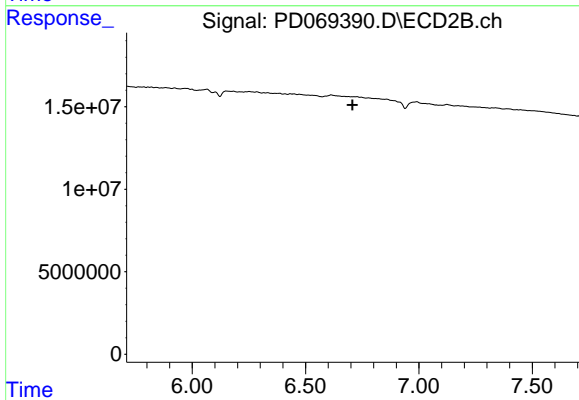
R.T.: 6.614 min
 Delta R.T.: 0.066 min
 Response: 2183748
 Conc: 0.20 ng/ml



#13 Dieldrin

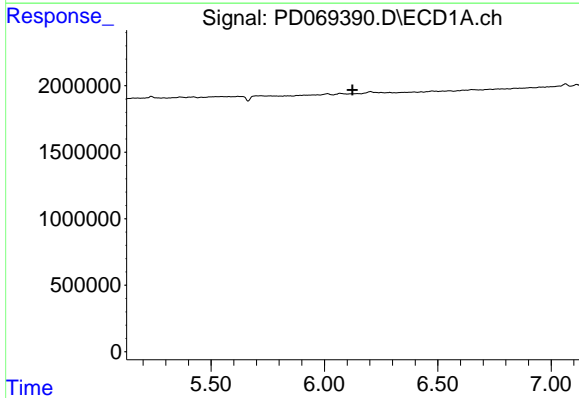
R.T.: 5.723 min
 Delta R.T.: -0.016 min
 Response: 311446
 Conc: 0.20 ng/ml

Instrument :
 ECD_D
 ClientSampleId :



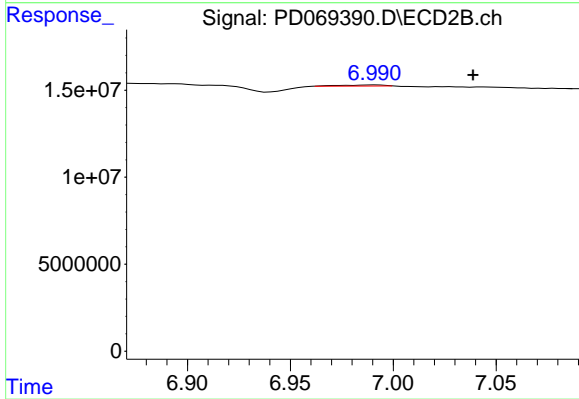
#13 Dieldrin

R.T.: 0.000 min
 Exp R.T. : 6.707 min
 Response: 0
 Conc: N.D.



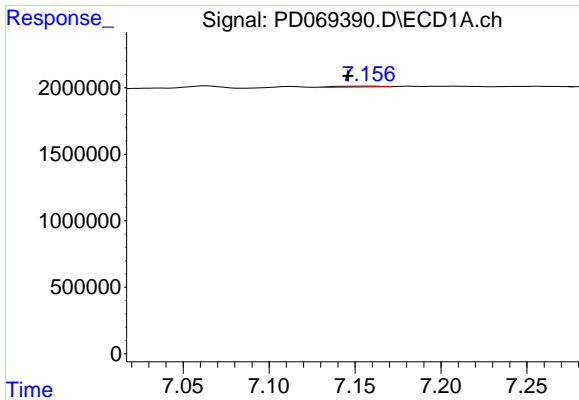
#16 4,4'-DDD

R.T.: 0.000 min
 Exp R.T. : 6.124 min
 Response: 0
 Conc: N.D.



#16 4,4'-DDD

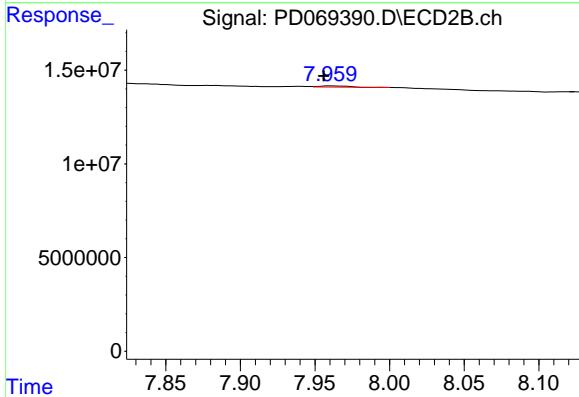
R.T.: 6.991 min
 Delta R.T.: -0.048 min
 Response: 961629
 Conc: 0.10 ng/ml



#21 Endrin ketone

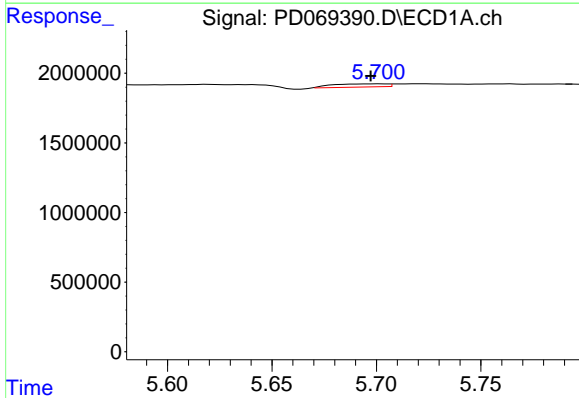
R.T.: 7.157 min
 Delta R.T.: 0.011 min
 Response: 149781
 Conc: 0.10 ng/ml

Instrument :
 ECD_D
 ClientSampleId :



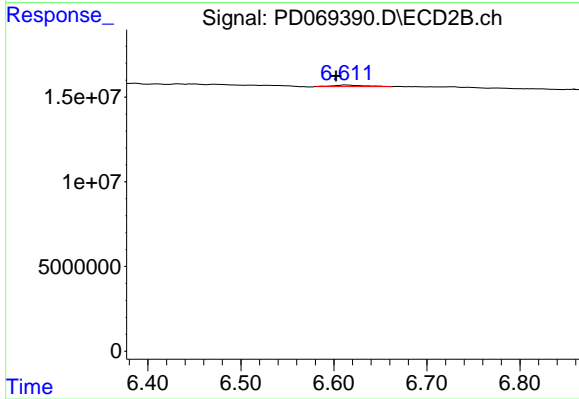
#21 Endrin ketone

R.T.: 7.961 min
 Delta R.T.: 0.005 min
 Response: 663562
 Conc: N.D.



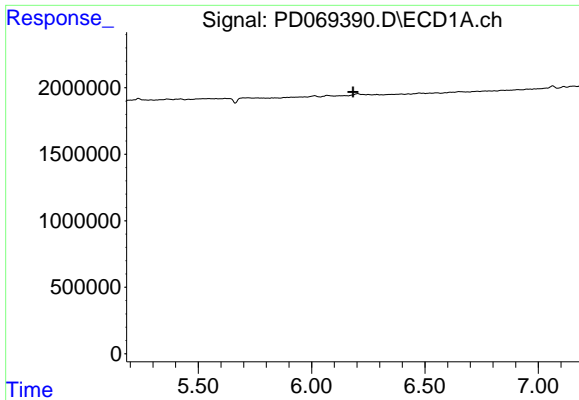
#22 Toxaphene-1

R.T.: 5.701 min
 Delta R.T.: 0.003 min
 Response: 417466
 Conc: 44.46 ng/ml



#22 Toxaphene-1

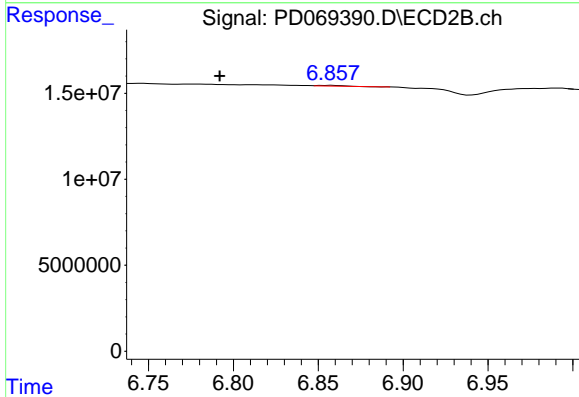
R.T.: 6.614 min
 Delta R.T.: 0.011 min
 Response: 2183748
 Conc: 46.29 ng/ml



#23 Toxaphene-2

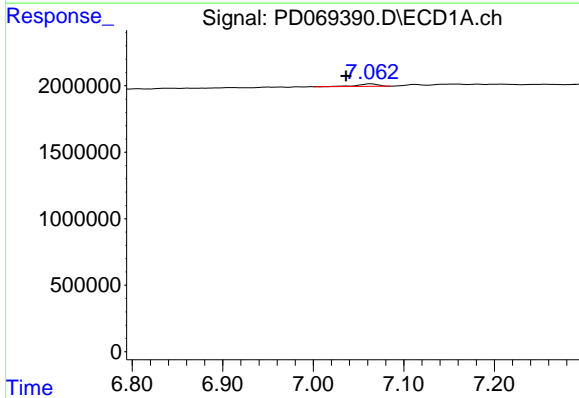
R.T.: 0.000 min
 Exp R.T.: 6.183 min
 Response: 0
 Conc: N.D.

Instrument :
 ECD_D
 ClientSampleId :



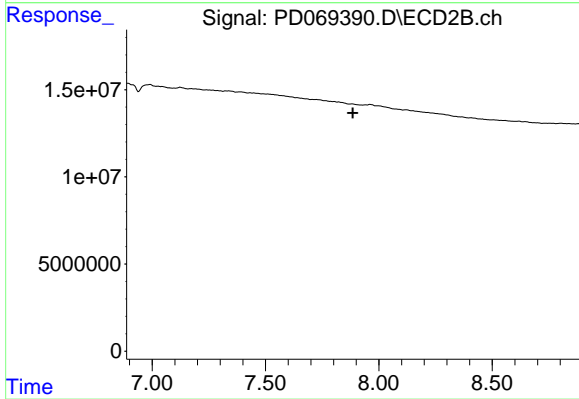
#23 Toxaphene-2

R.T.: 6.858 min
 Delta R.T.: 0.066 min
 Response: 171659
 Conc: 1.62 ng/ml



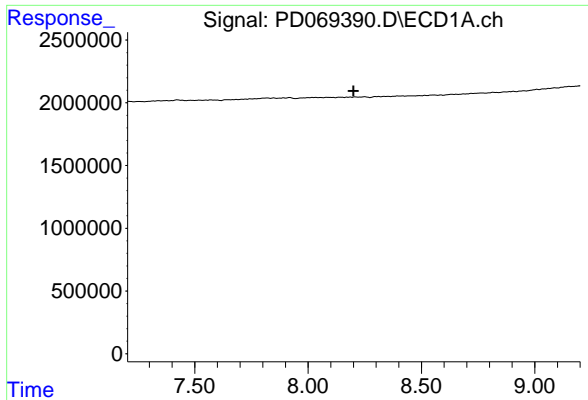
#26 Toxaphene-5

R.T.: 7.064 min
 Delta R.T.: 0.027 min
 Response: 297933
 Conc: 10.99 ng/ml



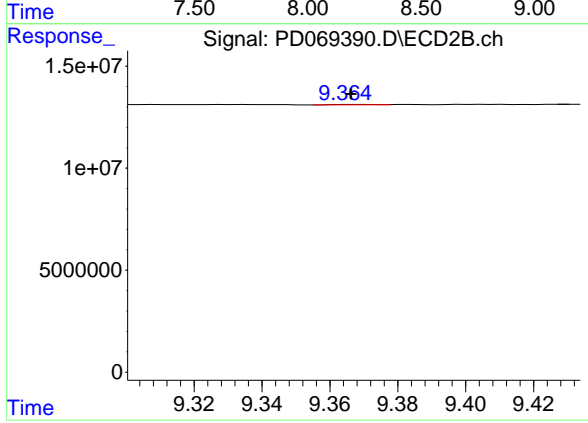
#26 Toxaphene-5

R.T.: 0.000 min
 Exp R.T.: 7.885 min
 Response: 0
 Conc: N.D.



#27 Decachlorobiphenyl
 R.T.: 0.000 min
 Exp R.T.: 8.201 min
 Response: 0
 Conc: N.D.

Instrument :
 ECD_D
 ClientSampleId :



#27 Decachlorobiphenyl
 R.T.: 9.367 min
 Delta R.T.: 0.000 min
 Response: 175732
 Conc: N.D.