

Data Path : Z:\pestpcbsrv\HPCHEM1\ECD_D\Data\PD050322\
 Data File : PD069398.D
 Signal(s) : Signal #1: ECD1A.ch Signal #2: ECD2B.ch
 Acq On : 03 May 2022 14:54
 Operator : AR\AJ
 Sample : PB144512BS
 Misc :
 ALS Vial : 22 Sample Multiplier: 1

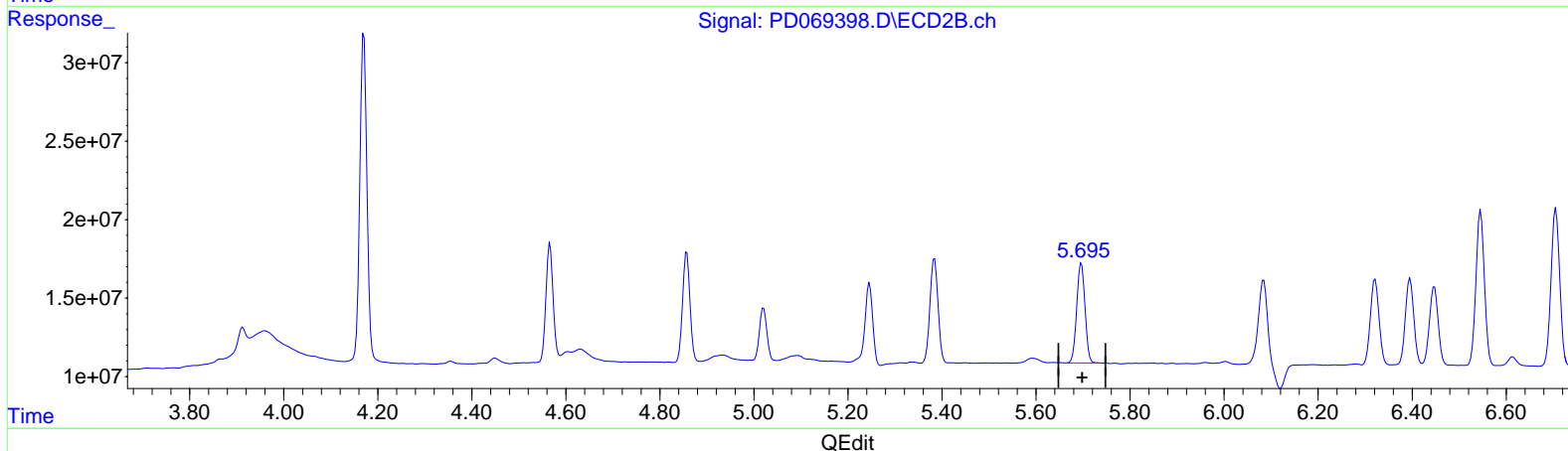
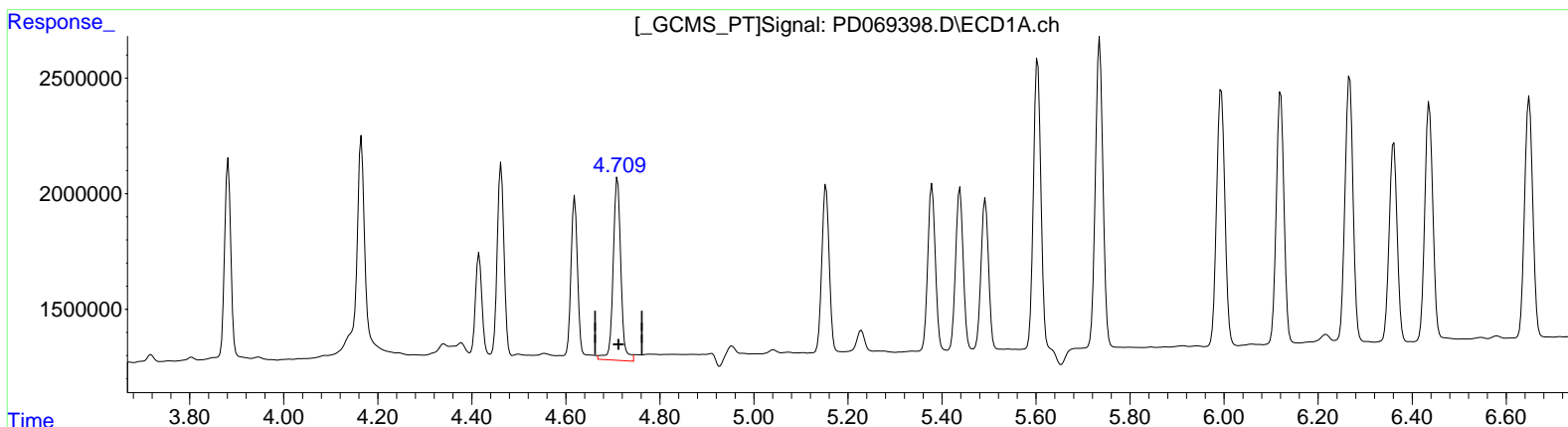
Instrument :
 ECD_D
 ClientSampleId :
 PLCS512

Manual Integrations APPROVED

Reviewed By : Abdul Mirza 05/04/2022
 Supervised By : mohammad ahmed 05/06/2022

Integration File signal 1: autoint1.e
 Integration File signal 2: autoint2.e
 Quant Time: May 04 01:16:03 2022
 Quant Method : Z:\pestpcbsrv\HPCHEM1\ECD_D\Method\PD041422CLP.M
 Quant Title : GC Extractables
 QLast Update : Thu Apr 21 02:24:30 2022
 Response via : Initial Calibration
 Integrator: ChemStation

Volume Inj. : 1 µl
 Signal #1 Phase : ZB-MR2 Signal #2 Phase: ZB-MR1
 Signal #1 Info : 30M x 0.32mm x 0.2 Signal #2 Info : 30M x 0.32mm x 0.50µm



(5) Aldrin (MB)
 4.710min 5.664 ng/ml
 response 9022922

(5) Aldrin #2 (MB)
 5.697min 5.434 ng/ml
 response 77570671

Data Path : Z:\pestpcbsrv\HPCHEM1\ECD_D\Data\PD050322\
 Data File : PD069398.D
 Signal(s) : Signal #1: ECD1A.ch Signal #2: ECD2B.ch
 Acq On : 03 May 2022 14:54
 Operator : AR\AJ
 Sample : PB144512BS
 Misc :
 ALS Vial : 22 Sample Multiplier: 1

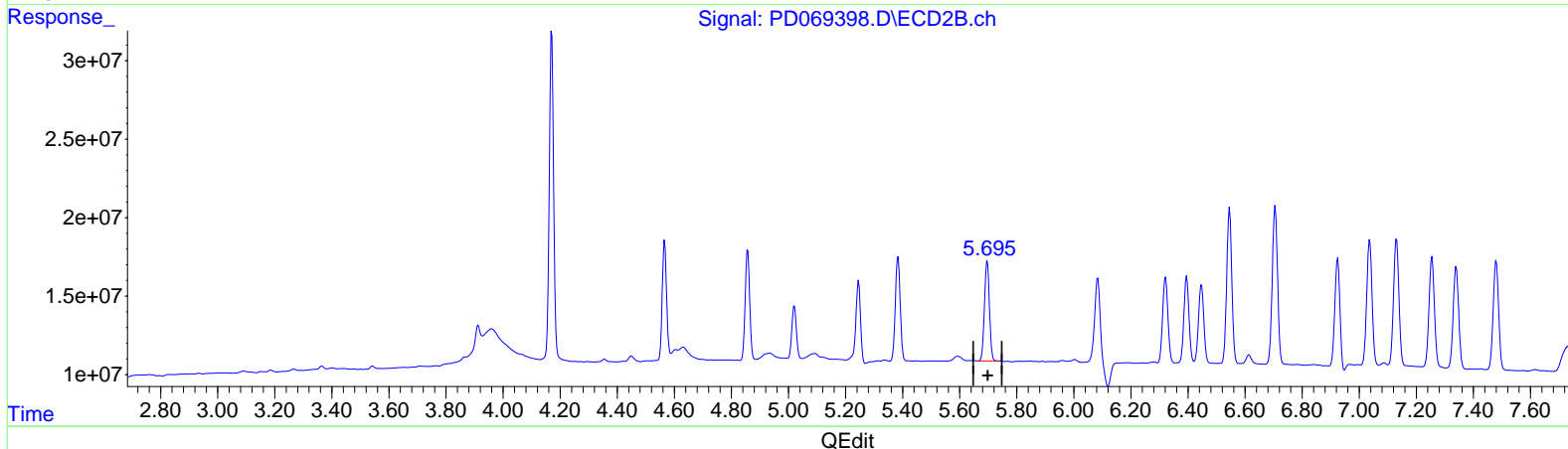
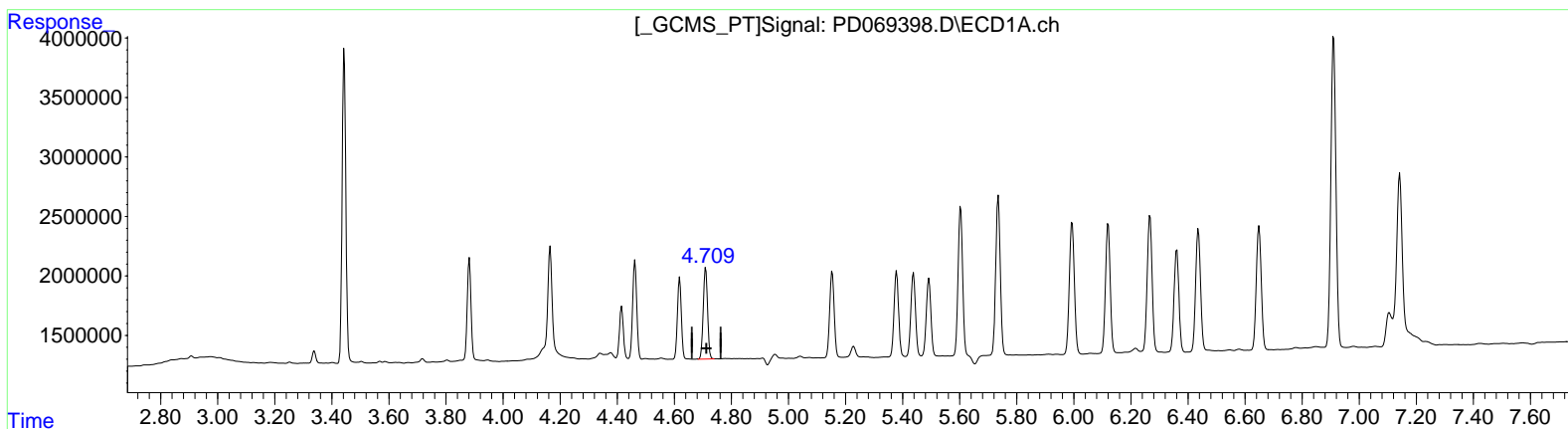
Instrument :
 ECD_D
 ClientSampleId :
 PLCS512

Manual Integrations APPROVED

Reviewed By : Abdul Mirza 05/04/2022
 Supervised By : mohammad ahmed 05/06/2022

Integration File signal 1: autoint1.e
 Integration File signal 2: autoint2.e
 Quant Time: May 04 01:16:03 2022
 Quant Method : Z:\pestpcbsrv\HPCHEM1\ECD_D\Method\PD041422CLP.M
 Quant Title : GC Extractables
 QLast Update : Thu Apr 21 02:24:30 2022
 Response via : Initial Calibration
 Integrator: ChemStation

Volume Inj. : 1 µl
 Signal #1 Phase : ZB-MR2 Signal #2 Phase: ZB-MR1
 Signal #1 Info : 30M x 0.32mm x 0.2 Signal #2 Info : 30M x 0.32mm x 0.50µm



(5) Aldrin (MB)
 4.709min 5.044 ng/ml m
 response 8034501

(5) Aldrin #2 (MB)
 5.697min 5.434 ng/ml
 response 77570671

Data Path : Z:\pestpcbsrv\HPCHEM1\ECD_D\Data\PD050322\
 Data File : PD069398.D
 Signal(s) : Signal #1: ECD1A.ch Signal #2: ECD2B.ch
 Acq On : 03 May 2022 14:54
 Operator : AR\AJ
 Sample : PB144512BS
 Misc :
 ALS Vial : 22 Sample Multiplier: 1

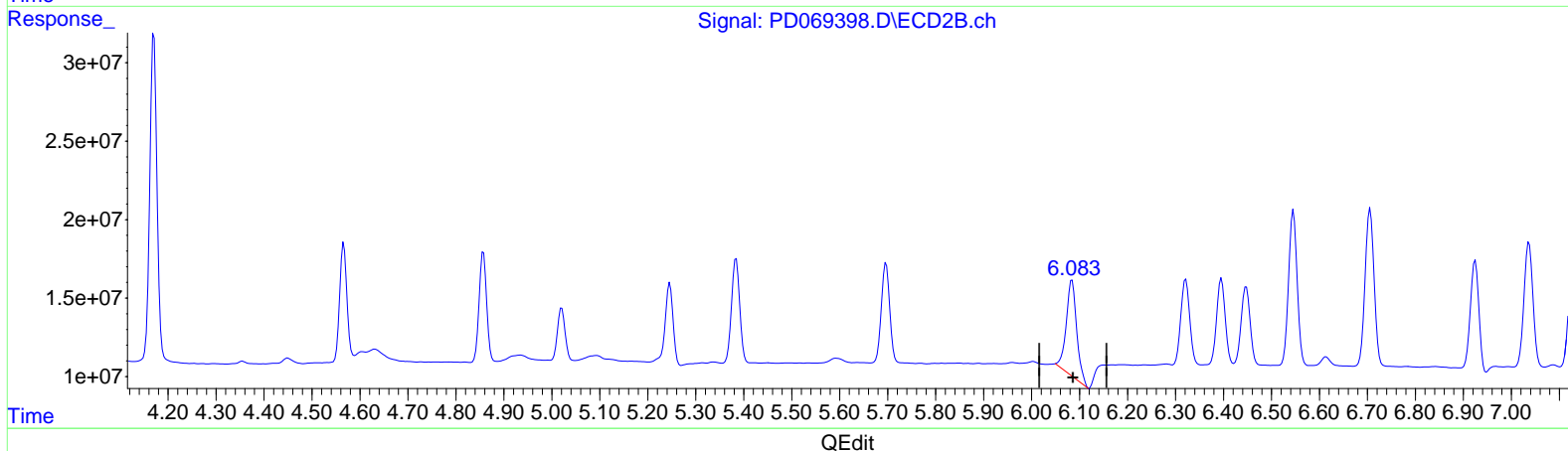
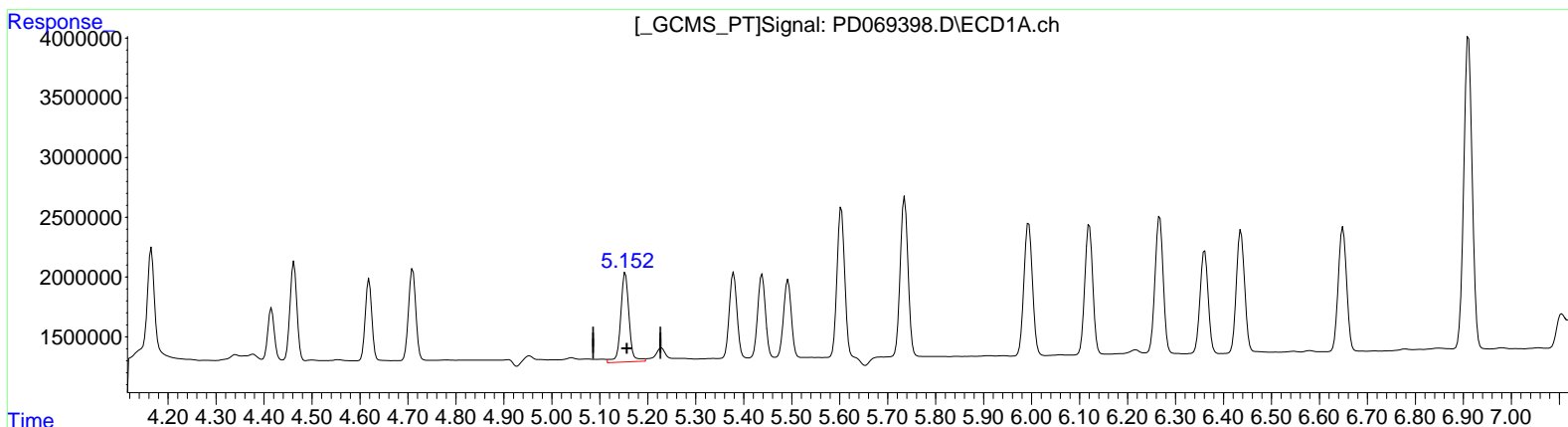
Instrument :
 ECD_D
 ClientSampleId :
 PLCS512

Manual Integrations APPROVED

Reviewed By : Abdul Mirza 05/04/2022
 Supervised By : mohammad ahmed 05/06/2022

Integration File signal 1: autoint1.e
 Integration File signal 2: autoint2.e
 Quant Time: May 04 01:16:03 2022
 Quant Method : Z:\pestpcbsrv\HPCHEM1\ECD_D\Method\PD041422CLP.M
 Quant Title : GC Extractables
 QLast Update : Thu Apr 21 02:24:30 2022
 Response via : Initial Calibration
 Integrator: ChemStation

Volume Inj. : 1 µl
 Signal #1 Phase : ZB-MR2 Signal #2 Phase: ZB-MR1
 Signal #1 Info : 30M x 0.32mm x 0.2 Signal #2 Info : 30M x 0.32mm x 0.50µm



(8) Heptachlor epoxide (B)
 5.153min 6.140 ng/ml
 response 9037762

(8) Heptachlor epoxide #2 (B)
 6.084min 8.156 ng/ml
 response 90873454

Data Path : Z:\pestpcbsrv\HPCHEM1\ECD_D\Data\PD050322\
 Data File : PD069398.D
 Signal(s) : Signal #1: ECD1A.ch Signal #2: ECD2B.ch
 Acq On : 03 May 2022 14:54
 Operator : AR\AJ
 Sample : PB144512BS
 Misc :
 ALS Vial : 22 Sample Multiplier: 1

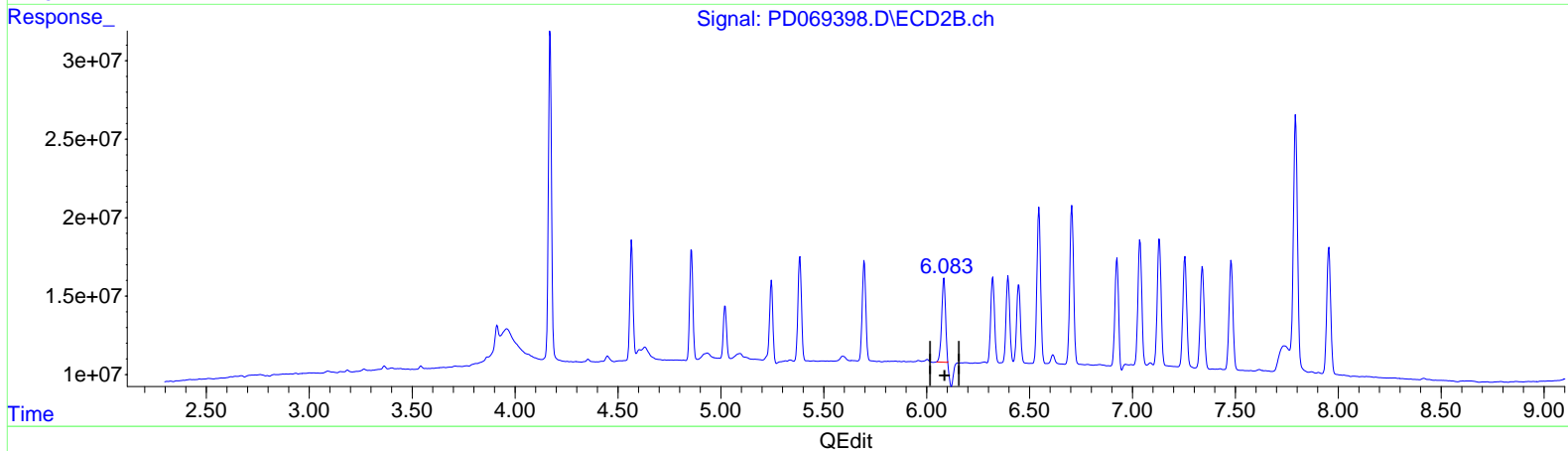
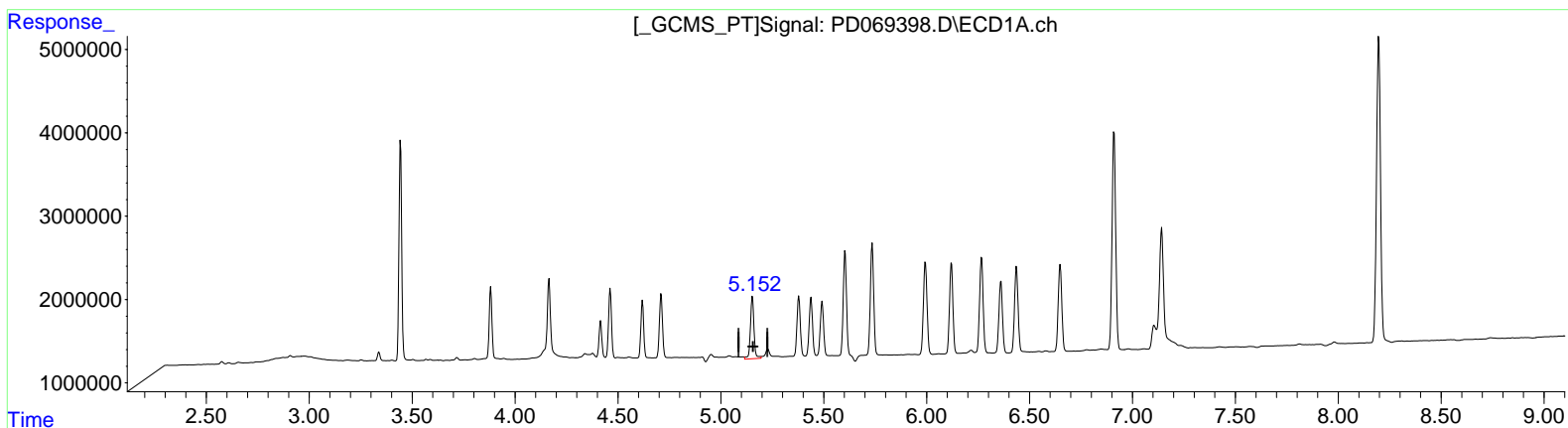
Instrument :
 ECD_D
 ClientSampleId :
 PLCS512

Manual Integrations APPROVED

Reviewed By : Abdul Mirza 05/04/2022
 Supervised By : mohammad ahmed 05/06/2022

Integration File signal 1: autoint1.e
 Integration File signal 2: autoint2.e
 Quant Time: May 04 01:16:03 2022
 Quant Method : Z:\pestpcbsrv\HPCHEM1\ECD_D\Method\PD041422CLP.M
 Quant Title : GC Extractables
 QLast Update : Thu Apr 21 02:24:30 2022
 Response via : Initial Calibration
 Integrator: ChemStation

Volume Inj. : 1 µl
 Signal #1 Phase : ZB-MR2 Signal #2 Phase: ZB-MR1
 Signal #1 Info : 30M x 0.32mm x 0.2 Signal #2 Info : 30M x 0.32mm x 0.50µm



(8) Heptachlor epoxide (B)
 5.153min 6.140 ng/ml
 response 9037762

(8) Heptachlor epoxide #2 (B)
 6.083min 6.258 ng/ml m
 response 69725668

Data Path : Z:\pestpcbsrv\HPCHEM1\ECD_D\Data\PD050322\
 Data File : PD069398.D
 Signal(s) : Signal #1: ECD1A.ch Signal #2: ECD2B.ch
 Acq On : 03 May 2022 14:54
 Operator : AR\AJ
 Sample : PB144512BS
 Misc :
 ALS Vial : 22 Sample Multiplier: 1

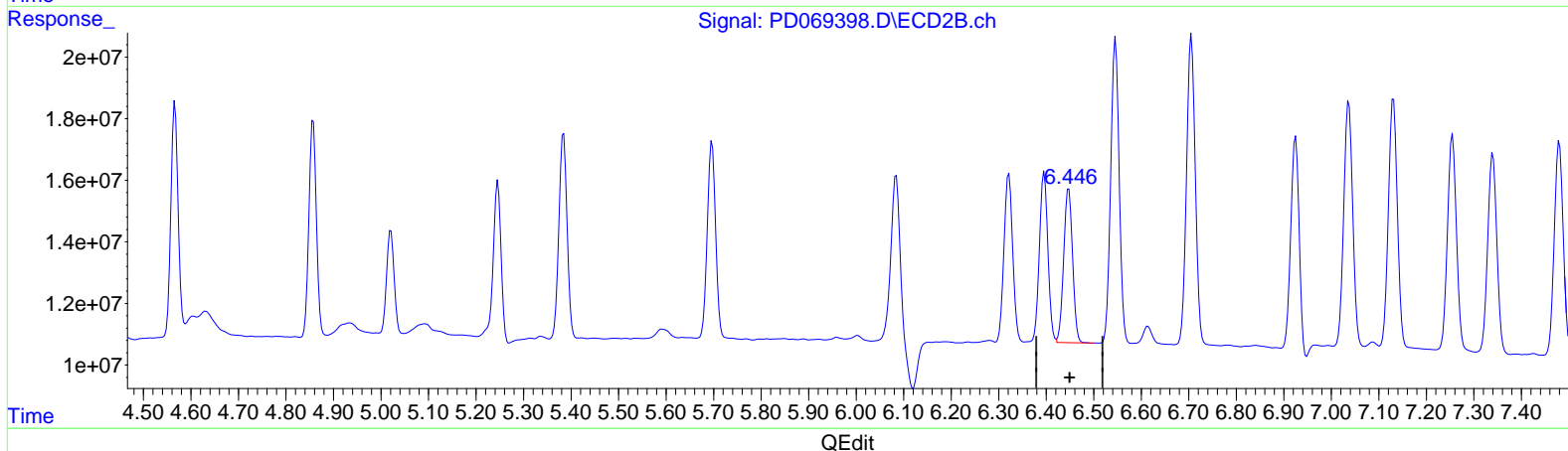
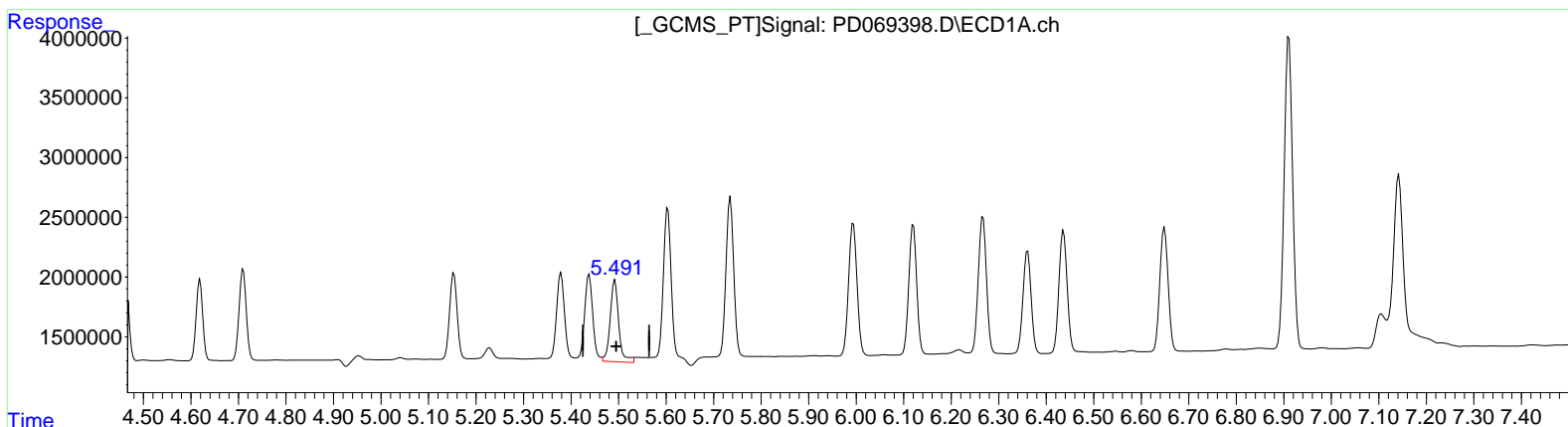
Instrument :
 ECD_D
 ClientSampleId :
 PLCS512

Manual Integrations APPROVED

Reviewed By : Abdul Mirza 05/04/2022
 Supervised By : mohammad ahmed 05/06/2022

Integration File signal 1: autoint1.e
 Integration File signal 2: autoint2.e
 Quant Time: May 04 01:16:03 2022
 Quant Method : Z:\pestpcbsrv\HPCHEM1\ECD_D\Method\PD041422CLP.M
 Quant Title : GC Extractables
 QLast Update : Thu Apr 21 02:24:30 2022
 Response via : Initial Calibration
 Integrator: ChemStation

Volume Inj. : 1 µl
 Signal #1 Phase : ZB-MR2 Signal #2 Phase: ZB-MR1
 Signal #1 Info : 30M x 0.32mm x 0.2 Signal #2 Info : 30M x 0.32mm x 0.50µm



(9) Endosulfan I (A)
 5.492min 5.958 ng/ml
 response 8694830

(9) Endosulfan I #2 (A)
 6.447min 5.462 ng/ml
 response 64879220

Data Path : Z:\pestpcbsrv\HPCHEM1\ECD_D\Data\PD050322\
 Data File : PD069398.D
 Signal(s) : Signal #1: ECD1A.ch Signal #2: ECD2B.ch
 Acq On : 03 May 2022 14:54
 Operator : AR\AJ
 Sample : PB144512BS
 Misc :
 ALS Vial : 22 Sample Multiplier: 1

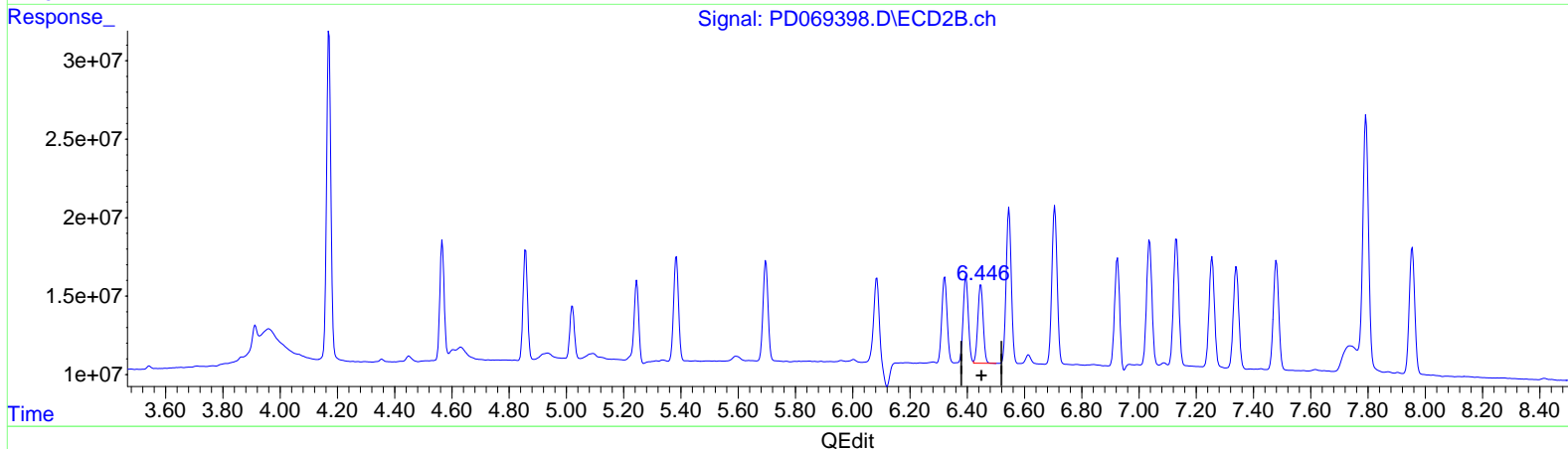
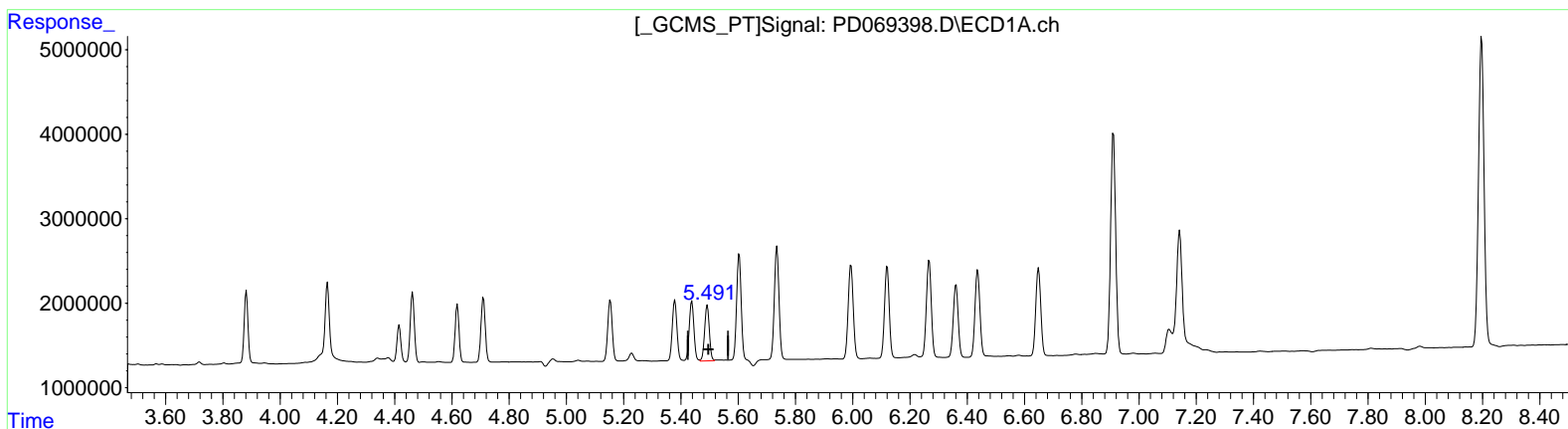
Instrument :
 ECD_D
 ClientSampleId :
 PLCS512

Manual Integrations APPROVED

Reviewed By : Abdul Mirza 05/04/2022
 Supervised By : mohammad ahmed 05/06/2022

Integration File signal 1: autoint1.e
 Integration File signal 2: autoint2.e
 Quant Time: May 04 01:16:03 2022
 Quant Method : Z:\pestpcbsrv\HPCHEM1\ECD_D\Method\PD041422CLP.M
 Quant Title : GC Extractables
 QLast Update : Thu Apr 21 02:24:30 2022
 Response via : Initial Calibration
 Integrator: ChemStation

Volume Inj. : 1 µl
 Signal #1 Phase : ZB-MR2 Signal #2 Phase: ZB-MR1
 Signal #1 Info : 30M x 0.32mm x 0.2 Signal #2 Info : 30M x 0.32mm x 0.50µm



(9) Endosulfan I (A)
 5.491min 5.157 ng/ml m
 response 7525955

(9) Endosulfan I #2 (A)
 6.447min 5.462 ng/ml
 response 64879220

Data Path : Z:\pestpcbsrv\HPCHEM1\ECD_D\Data\PD050322\
 Data File : PD069398.D
 Signal(s) : Signal #1: ECD1A.ch Signal #2: ECD2B.ch
 Acq On : 03 May 2022 14:54
 Operator : AR\AJ
 Sample : PB144512BS
 Misc :
 ALS Vial : 22 Sample Multiplier: 1

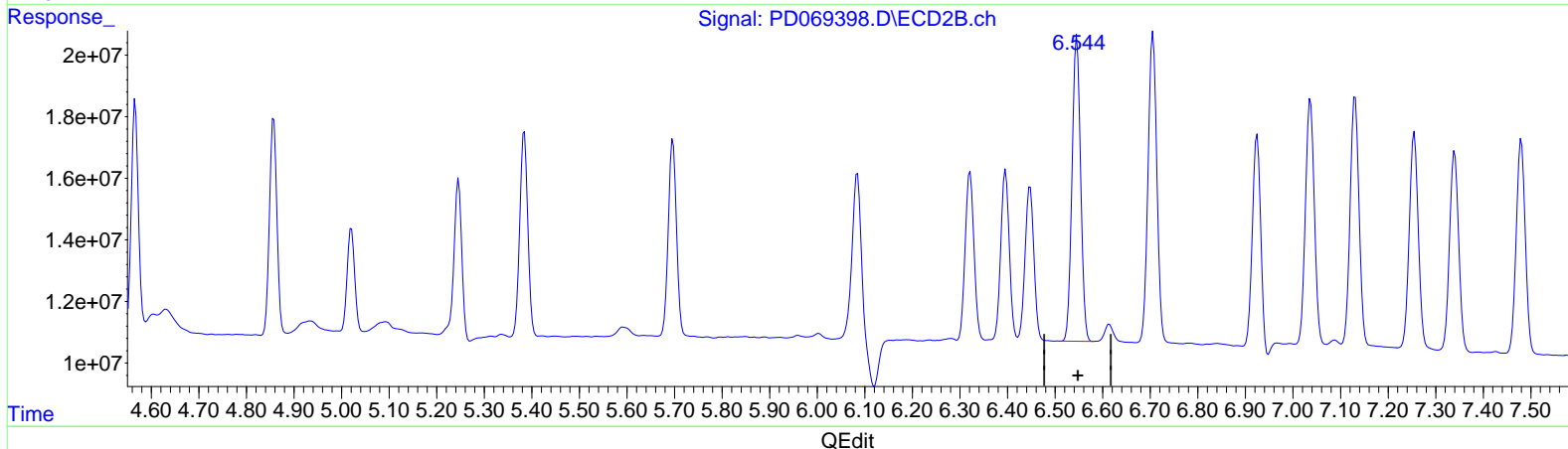
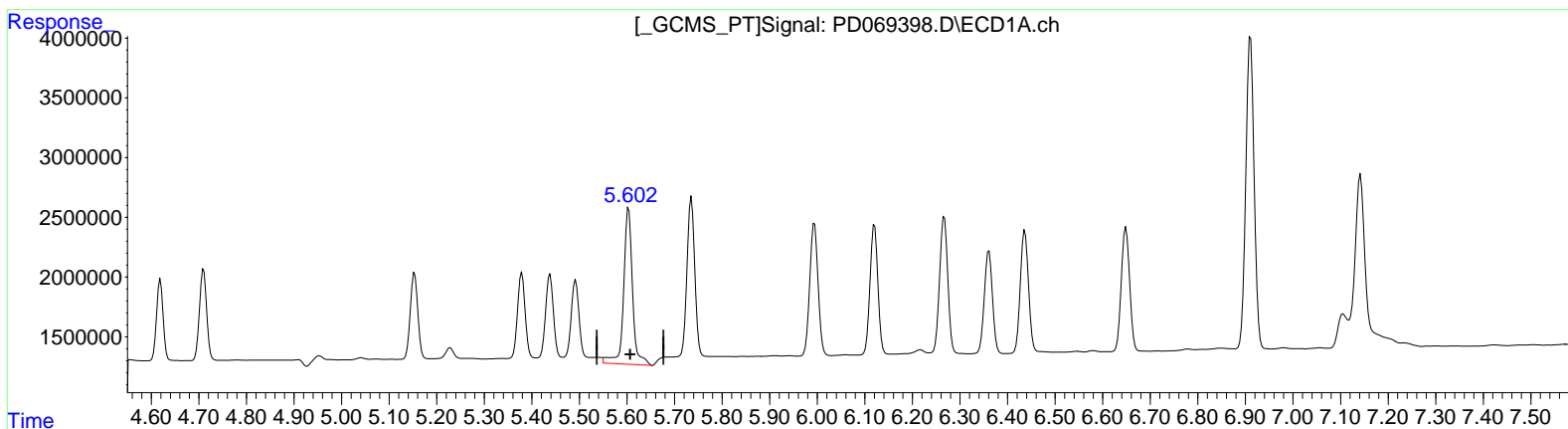
Instrument :
 ECD_D
 ClientSampleId :
 PLCS512

Manual Integrations APPROVED

Reviewed By : Abdul Mirza 05/04/2022
 Supervised By : mohammad ahmed 05/06/2022

Integration File signal 1: autoint1.e
 Integration File signal 2: autoint2.e
 Quant Time: May 04 01:16:03 2022
 Quant Method : Z:\pestpcbsrv\HPCHEM1\ECD_D\Method\PD041422CLP.M
 Quant Title : GC Extractables
 QLast Update : Thu Apr 21 02:24:30 2022
 Response via : Initial Calibration
 Integrator: ChemStation

Volume Inj. : 1 µl
 Signal #1 Phase : ZB-MR2 Signal #2 Phase: ZB-MR1
 Signal #1 Info : 30M x 0.32mm x 0.2 Signal #2 Info : 30M x 0.32mm x 0.50µm



(12) 4,4'-DDE (B)
 5.604min 12.700 ng/ml
 response 17034910

(12) 4,4'-DDE #2 (B)
 6.546min 11.334 ng/ml
 response 123306496

Data Path : Z:\pestpcbsrv\HPCHEM1\ECD_D\Data\PD050322\
 Data File : PD069398.D
 Signal(s) : Signal #1: ECD1A.ch Signal #2: ECD2B.ch
 Acq On : 03 May 2022 14:54
 Operator : AR\AJ
 Sample : PB144512BS
 Misc :
 ALS Vial : 22 Sample Multiplier: 1

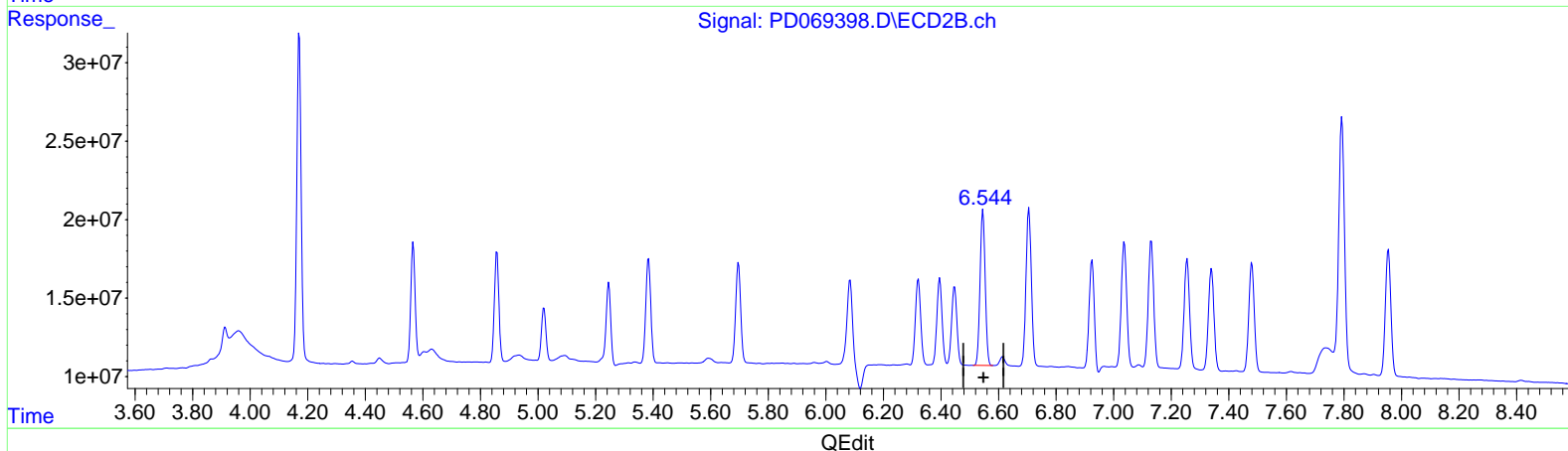
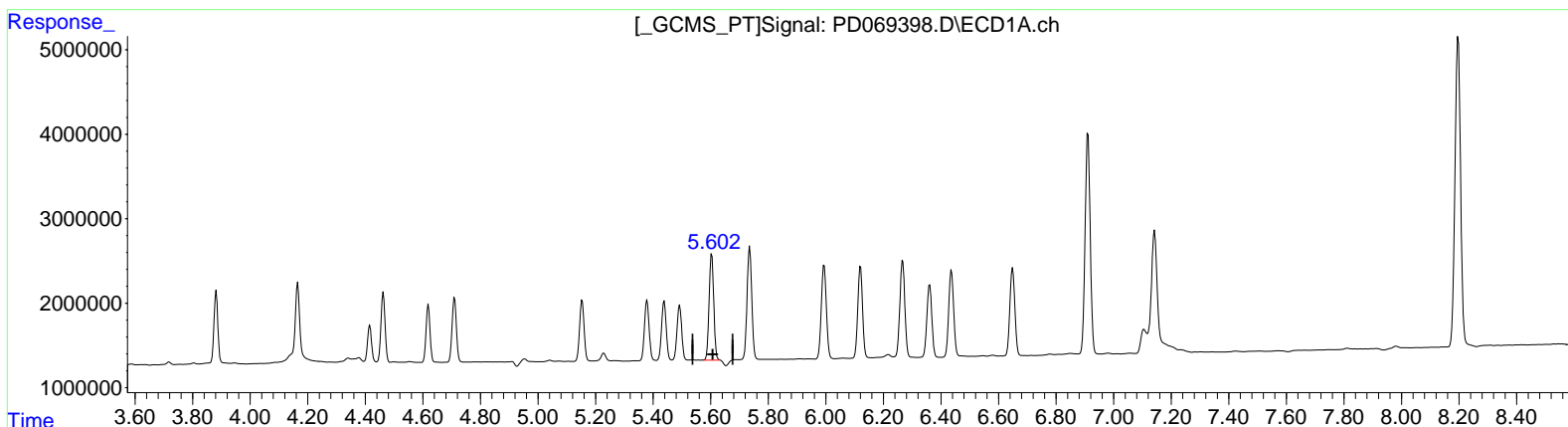
Instrument :
 ECD_D
 ClientSampleId :
 PLCS512

Manual Integrations APPROVED

Reviewed By : Abdul Mirza 05/04/2022
 Supervised By : mohammad ahmed 05/06/2022

Integration File signal 1: autoint1.e
 Integration File signal 2: autoint2.e
 Quant Time: May 04 01:16:03 2022
 Quant Method : Z:\pestpcbsrv\HPCHEM1\ECD_D\Method\PD041422CLP.M
 Quant Title : GC Extractables
 QLast Update : Thu Apr 21 02:24:30 2022
 Response via : Initial Calibration
 Integrator: ChemStation

Volume Inj. : 1 µl
 Signal #1 Phase : ZB-MR2 Signal #2 Phase: ZB-MR1
 Signal #1 Info : 30M x 0.32mm x 0.2 Signal #2 Info : 30M x 0.32mm x 0.50µm



(12) 4,4'-DDE (B)
 5.602min 10.404 ng/ml m
 response 13955575

(12) 4,4'-DDE #2 (B)
 6.546min 11.334 ng/ml
 response 123306496

Data Path : Z:\pestpcbsrv\HPCHEM1\ECD_D\Data\PD050322\
 Data File : PD069398.D
 Signal(s) : Signal #1: ECD1A.ch Signal #2: ECD2B.ch
 Acq On : 03 May 2022 14:54
 Operator : AR\AJ
 Sample : PB144512BS
 Misc :
 ALS Vial : 22 Sample Multiplier: 1

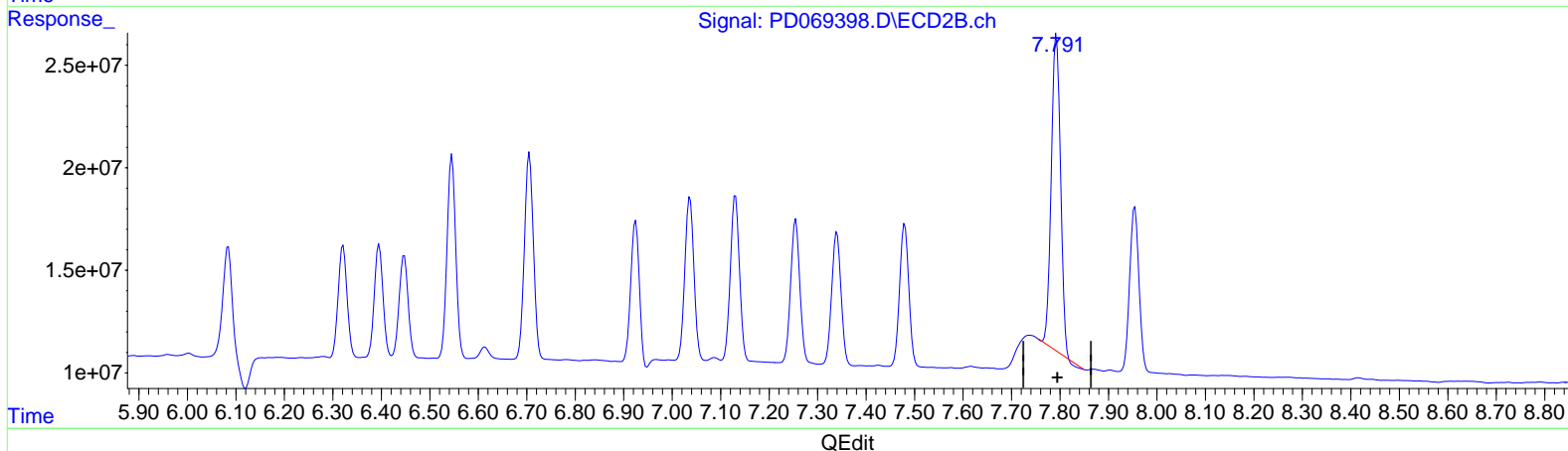
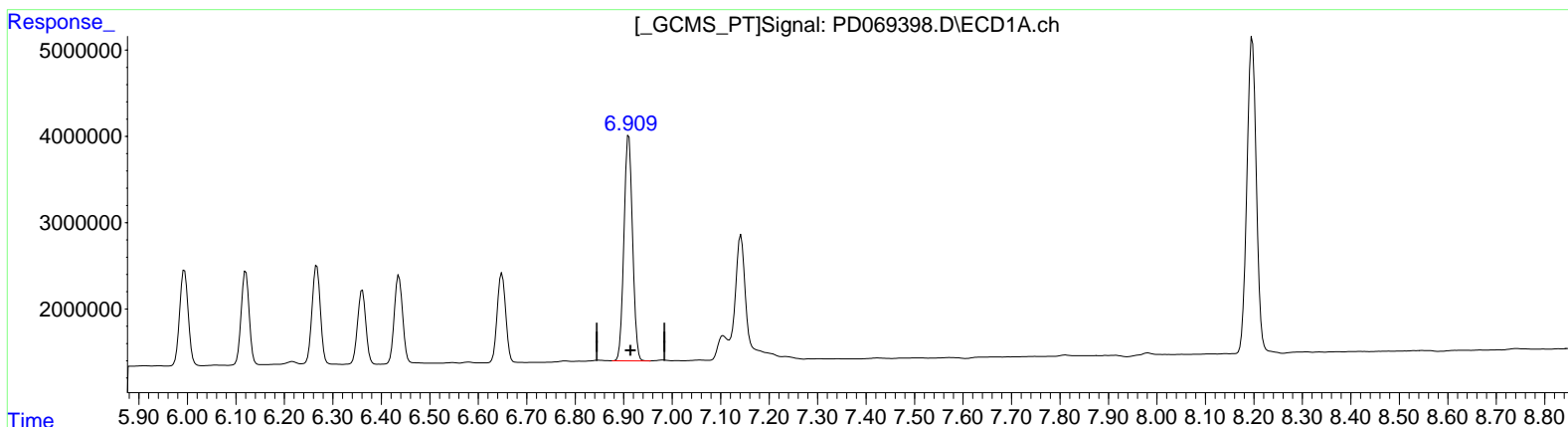
Instrument :
 ECD_D
 ClientSampleId :
 PLCS512

Manual Integrations APPROVED

Reviewed By : Abdul Mirza 05/04/2022
 Supervised By : mohammad ahmed 05/06/2022

Integration File signal 1: autoint1.e
 Integration File signal 2: autoint2.e
 Quant Time: May 04 01:16:03 2022
 Quant Method : Z:\pestpcbsrv\HPCHEM1\ECD_D\Method\PD041422CLP.M
 Quant Title : GC Extractables
 QLast Update : Thu Apr 21 02:24:30 2022
 Response via : Initial Calibration
 Integrator: ChemStation

Volume Inj. : 1 µl
 Signal #1 Phase : ZB-MR2 Signal #2 Phase: ZB-MR1
 Signal #1 Info : 30M x 0.32mm x 0.2 Signal #2 Info : 30M x 0.32mm x 0.50µm



(20) Methoxychlor (A)
 6.911min 47.330 ng/ml
 response 32120850

(20) Methoxychlor #2 (A)
 7.793min 48.810 ng/ml
 response 201149770

Quantitation Report (Qedit)

Data Path : Z:\pestpcbsrv\HPCHEM1\ECD_D\Data\PD050322\
Data File : PD069398.D
Signal(s) : Signal #1: ECD1A.ch Signal #2: ECD2B.ch
Acq On : 03 May 2022 14:54
Operator : AR\AJ
Sample : PB144512BS
Misc :
ALS Vial : 22 Sample Multiplier: 1

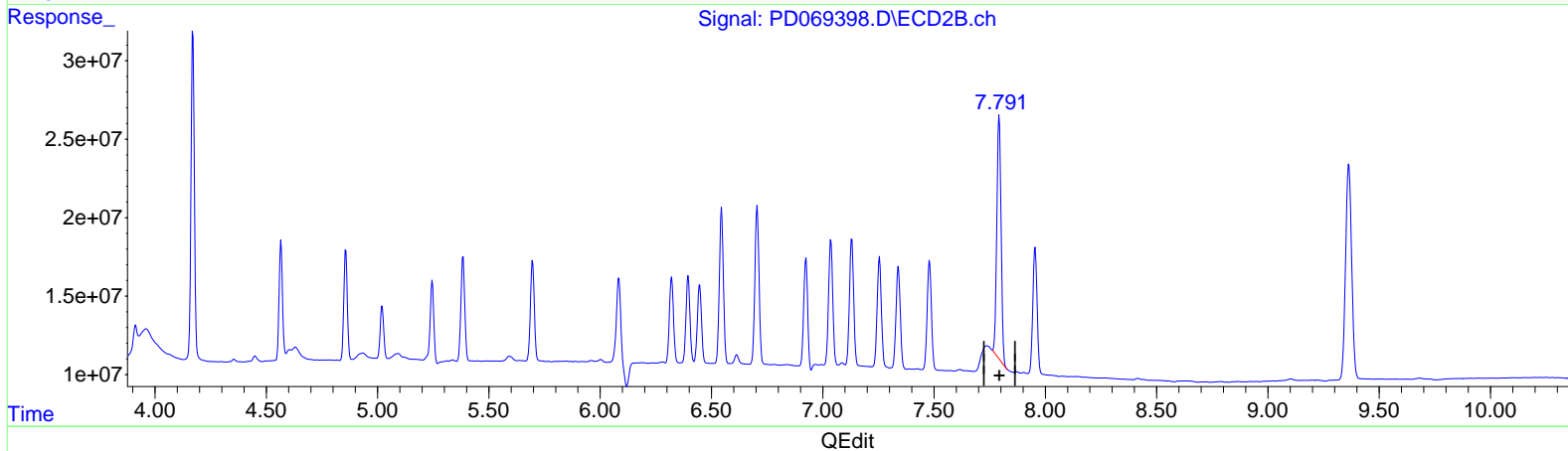
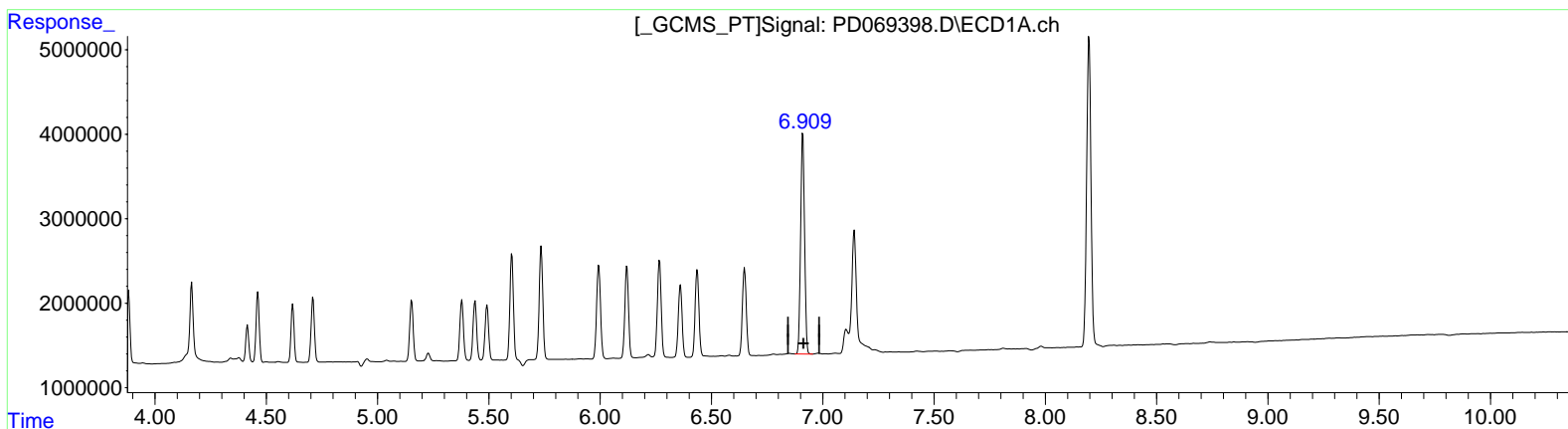
Instrument :
ECD_D
ClientSampleId :
PLCS512

Manual Integrations APPROVED

Reviewed By : Abdul Mirza 05/04/2022
Supervised By : mohammad ahmed 05/06/2022

Integration File signal 1: autoint1.e
Integration File signal 2: autoint2.e
Quant Time: May 04 01:16:03 2022
Quant Method : Z:\pestpcbsrv\HPCHEM1\ECD_D\Method\PD041422CLP.M
Quant Title : GC Extractables
QLast Update : Thu Apr 21 02:24:30 2022
Response via : Initial Calibration
Integrator: ChemStation

Volume Inj. : 1 µl
Signal #1 Phase : ZB-MR2 Signal #2 Phase: ZB-MR1
Signal #1 Info : 30M x 0.32mm x 0.2 Signal #2 Info : 30M x 0.32mm x 0.50µm



(20) Methoxychlor (A)
6.911min 47.330 ng/ml
response 32120850

(20) Methoxychlor #2 (A)
7.791min 50.161 ng/ml m
response 206716211

(+) = Expected Retention Time

Data Path : Z:\pestpcbsrv\HPCHEM1\ECD_D\Data\PD050322\
 Data File : PD069398.D
 Signal(s) : Signal #1: ECD1A.ch Signal #2: ECD2B.ch
 Acq On : 03 May 2022 14:54
 Operator : AR\AJ
 Sample : PB144512BS
 Misc :
 ALS Vial : 22 Sample Multiplier: 1

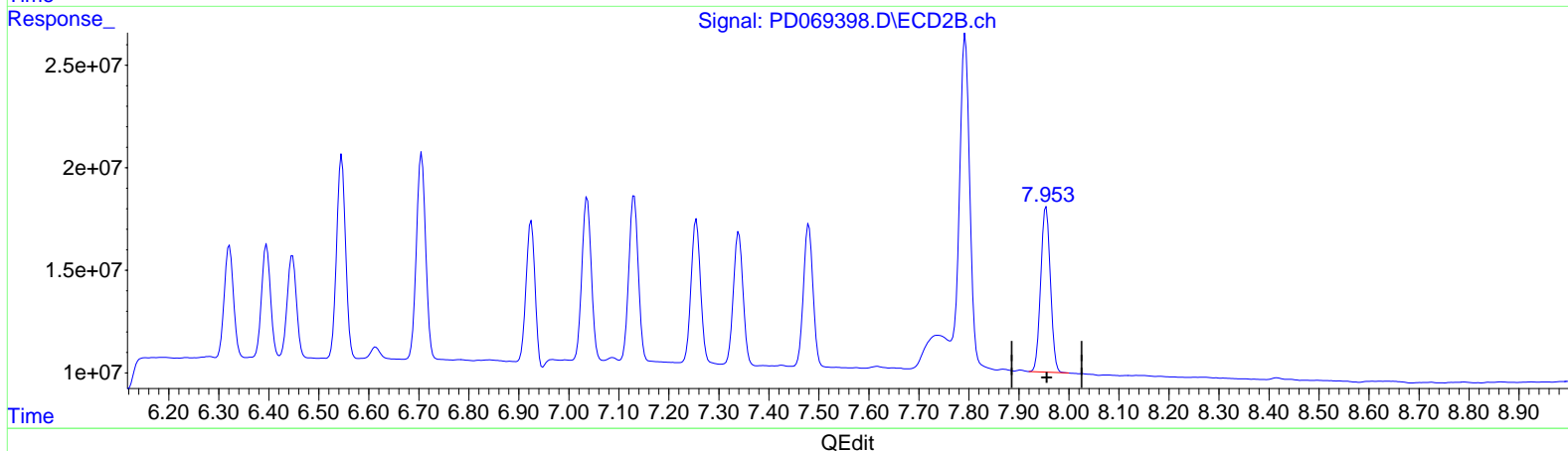
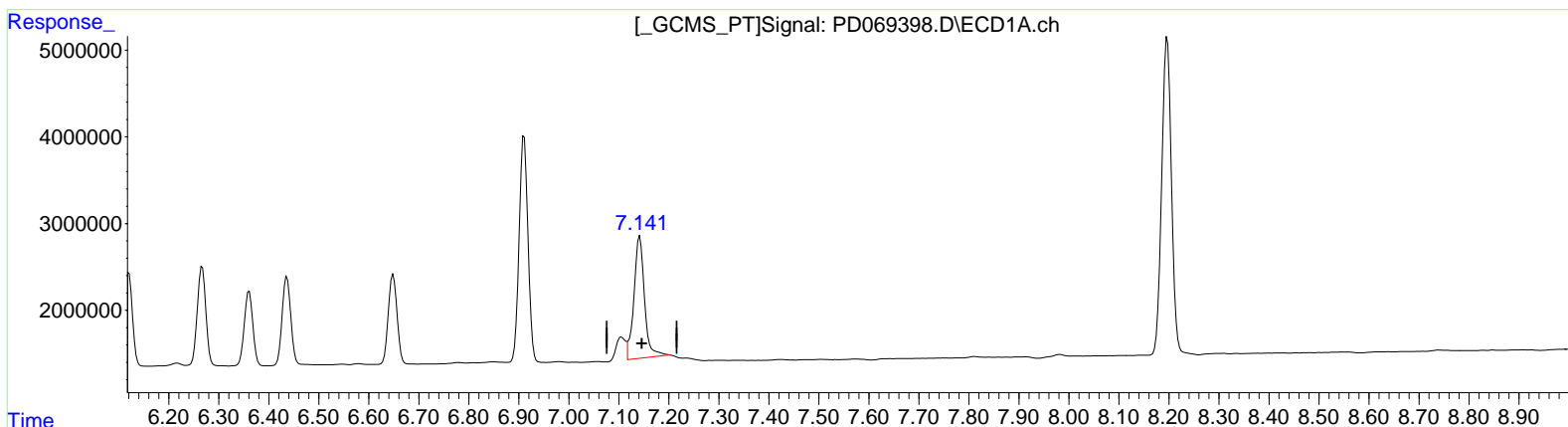
Instrument :
 ECD_D
 ClientSampleId :
 PLCS512

Manual Integrations APPROVED

Reviewed By : Abdul Mirza 05/04/2022
 Supervised By : mohammad ahmed 05/06/2022

Integration File signal 1: autoint1.e
 Integration File signal 2: autoint2.e
 Quant Time: May 04 01:16:03 2022
 Quant Method : Z:\pestpcbsrv\HPCHEM1\ECD_D\Method\PD041422CLP.M
 Quant Title : GC Extractables
 QLast Update : Thu Apr 21 02:24:30 2022
 Response via : Initial Calibration
 Integrator: ChemStation

Volume Inj. : 1 µl
 Signal #1 Phase : ZB-MR2 Signal #2 Phase: ZB-MR1
 Signal #1 Info : 30M x 0.32mm x 0.2 Signal #2 Info : 30M x 0.32mm x 0.50µm



(21) Endrin ketone (B)
 7.142min 14.279 ng/ml
 response 20629035

(21) Endrin ketone #2 (B)
 7.955min 11.719 ng/ml
 response 108195272

Data Path : Z:\pestpcbsrv\HPCHEM1\ECD_D\Data\PD050322\
 Data File : PD069398.D
 Signal(s) : Signal #1: ECD1A.ch Signal #2: ECD2B.ch
 Acq On : 03 May 2022 14:54
 Operator : AR\AJ
 Sample : PB144512BS
 Misc :
 ALS Vial : 22 Sample Multiplier: 1

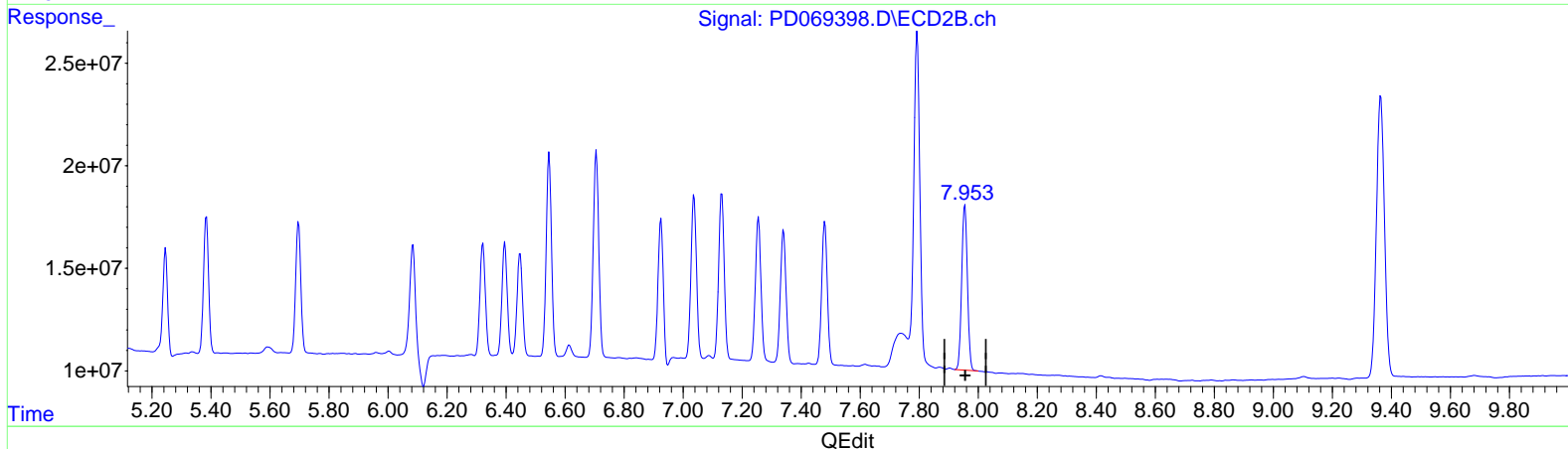
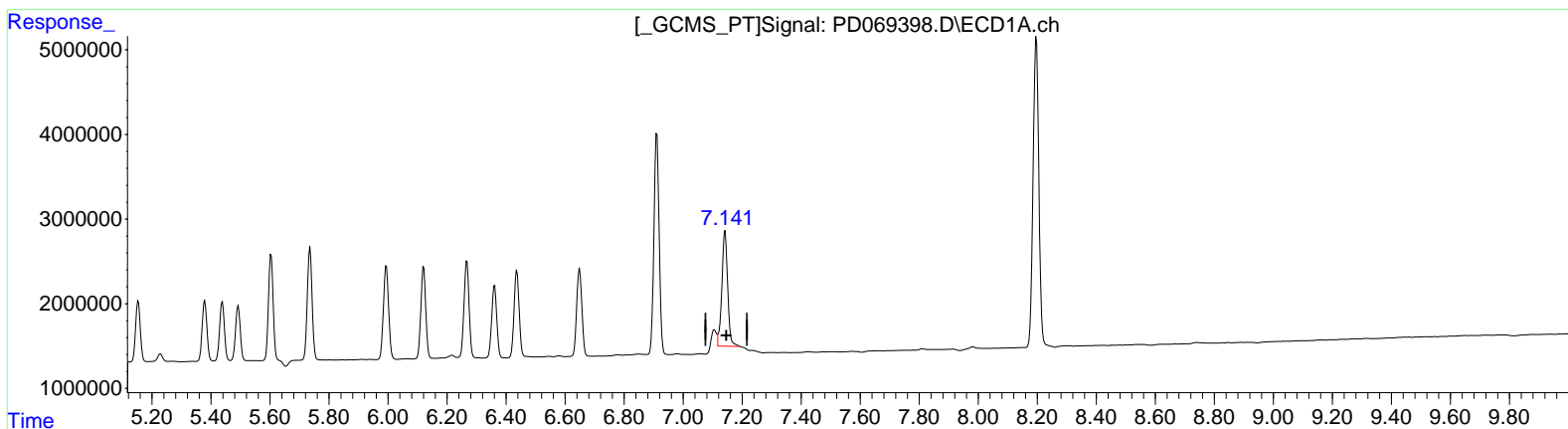
Instrument :
 ECD_D
 ClientSampleId :
 PLCS512

Manual Integrations APPROVED

Reviewed By : Abdul Mirza 05/04/2022
 Supervised By : mohammad ahmed 05/06/2022

Integration File signal 1: autoint1.e
 Integration File signal 2: autoint2.e
 Quant Time: May 04 01:16:03 2022
 Quant Method : Z:\pestpcbsrv\HPCHEM1\ECD_D\Method\PD041422CLP.M
 Quant Title : GC Extractables
 QLast Update : Thu Apr 21 02:24:30 2022
 Response via : Initial Calibration
 Integrator: ChemStation

Volume Inj. : 1 µl
 Signal #1 Phase : ZB-MR2 Signal #2 Phase: ZB-MR1
 Signal #1 Info : 30M x 0.32mm x 0.2 Signal #2 Info : 30M x 0.32mm x 0.50µm



(21) Endrin ketone (B)
 7.141min 12.837 ng/ml m
 response 18545642

(21) Endrin ketone #2 (B)
 7.955min 11.719 ng/ml
 response 108195272