

Data Path : Z:\pestpcbsrv\HPCHEM1\ECD_D\Data\PD050323\
 Data File : PD075189.D
 Signal(s) : Signal #1: ECD1A.ch Signal #2: ECD2B.ch
 Acq On : 04 May 2023 01:34
 Operator : AR\AJ
 Sample : 02447-08
 Misc :
 ALS Vial : 31 Sample Multiplier: 1

Instrument :

ECD_D

ClientSampleId :

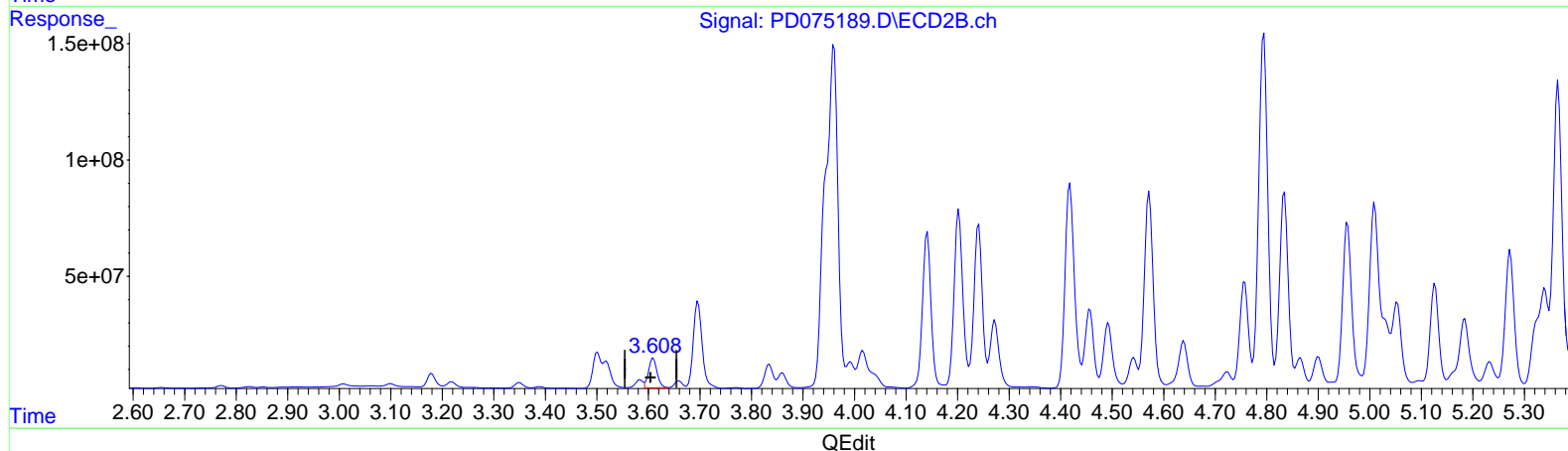
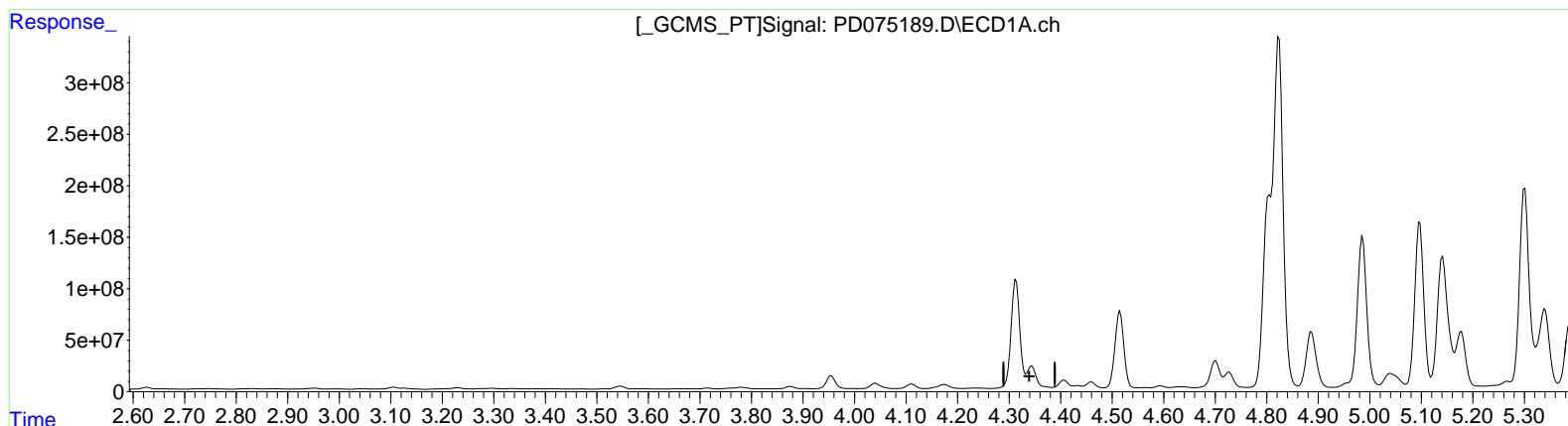
EW913

Manual IntegrationsAPPROVED

Reviewed By :Abdul Mirza 05/04/2023
 Supervised By :Ankita Jodhani 05/05/2023

Integration File signal 1: autoint1.e
 Integration File signal 2: autoint2.e
 Quant Time: May 04 03:00:41 2023
 Quant Method : Z:\pestpcbsrv\HPCHEM1\ECD_D\Method\PD050323CLP.M
 Quant Title : GC Extractables
 QLast Update : Thu May 04 02:14:07 2023
 Response via : Initial Calibration
 Integrator: ChemStation

Volume Inj. : 1 µl
 Signal #1 Phase : ZB-MR1 Signal #2 Phase: ZB-MR2
 Signal #1 Info : 30M x 0.32mm x0.5 Signal #2 Info : 30M x 0.32mm x 0.25µm



(3) gamma-BHC (Lindane) (MA)

4.344min -2.104 ng/ml

response -7563480

(3) gamma-BHC (Lindane) #2 (MA)

3.609min 99.879 ng/ml

response 146814967

Data Path : Z:\pestpcbsrv\HPCHEM1\ECD_D\Data\PD050323\
 Data File : PD075189.D
 Signal(s) : Signal #1: ECD1A.ch Signal #2: ECD2B.ch
 Acq On : 04 May 2023 01:34
 Operator : AR\AJ
 Sample : 02447-08
 Misc :
 ALS Vial : 31 Sample Multiplier: 1

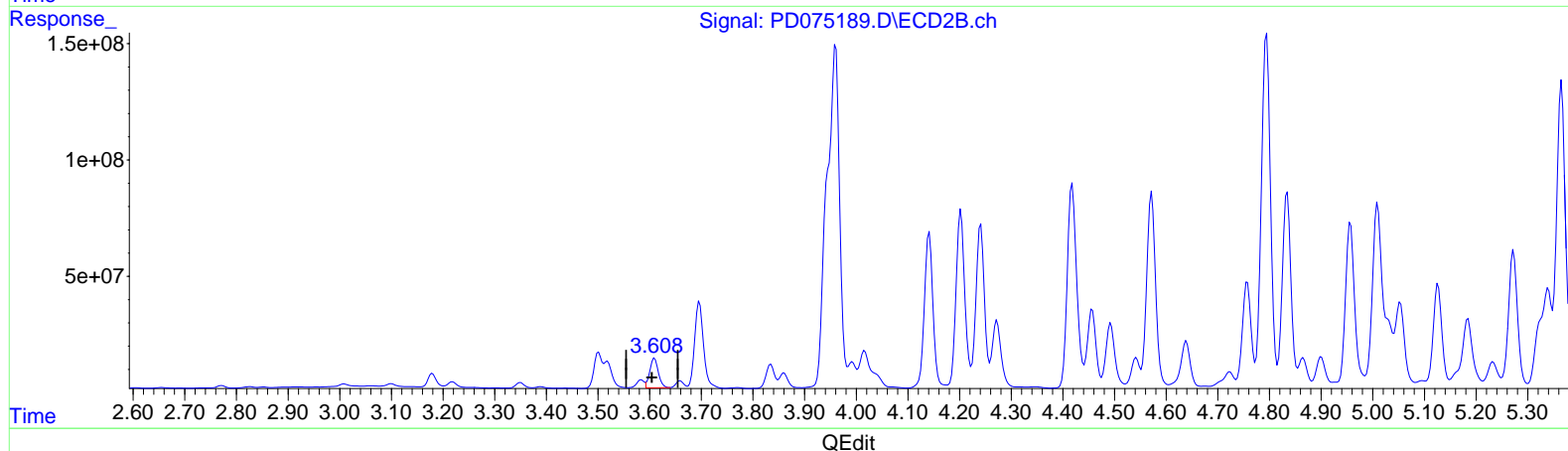
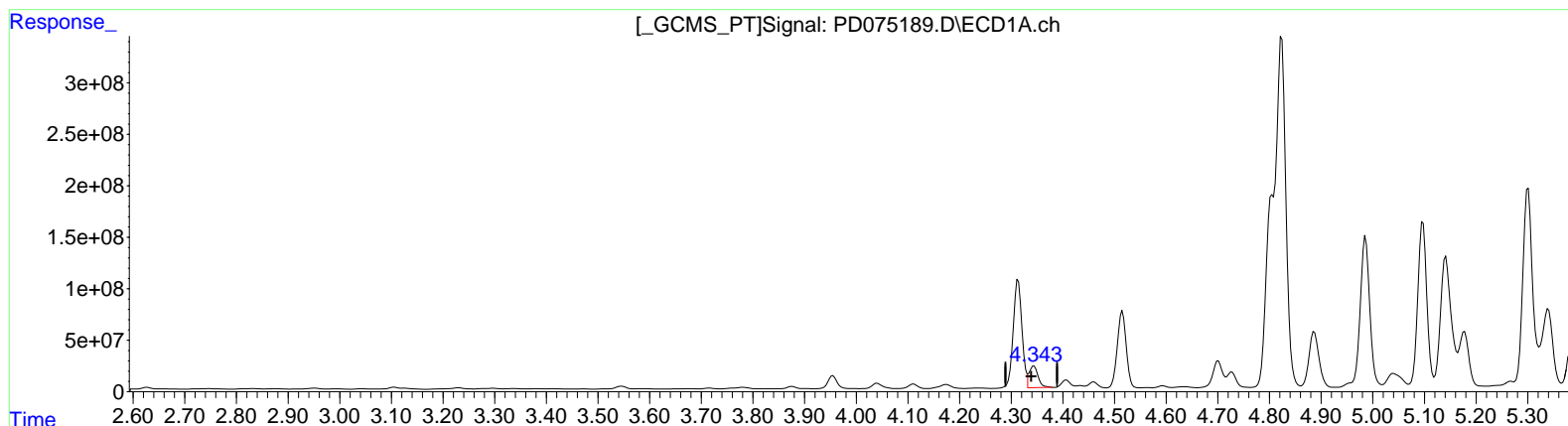
Instrument :
 ECD_D
 ClientSampleId :
 EW913

Manual Integrations APPROVED

Reviewed By : Abdul Mirza 05/04/2023
 Supervised By : Ankita Jodhani 05/05/2023

Integration File signal 1: autoint1.e
 Integration File signal 2: autoint2.e
 Quant Time: May 04 03:00:41 2023
 Quant Method : Z:\pestpcbsrv\HPCHEM1\ECD_D\Method\PD050323CLP.M
 Quant Title : GC Extractables
 QLast Update : Thu May 04 02:14:07 2023
 Response via : Initial Calibration
 Integrator: ChemStation

Volume Inj. : 1 µl
 Signal #1 Phase : ZB-MR1 Signal #2 Phase: ZB-MR2
 Signal #1 Info : 30M x 0.32mm x 0.5 Signal #2 Info : 30M x 0.32mm x 0.25µm



(3) gamma-BHC (Lindane) (MA)

4.343min 69.077 ng/ml m
 response 248339422

(3) gamma-BHC (Lindane) #2 (MA)

3.609min 99.879 ng/ml
 response 146814967

Data Path : Z:\pestpcbsrv\HPCHEM1\ECD_D\Data\PD050323\
 Data File : PD075189.D
 Signal(s) : Signal #1: ECD1A.ch Signal #2: ECD2B.ch
 Acq On : 04 May 2023 01:34
 Operator : AR\AJ
 Sample : 02447-08
 Misc :
 ALS Vial : 31 Sample Multiplier: 1

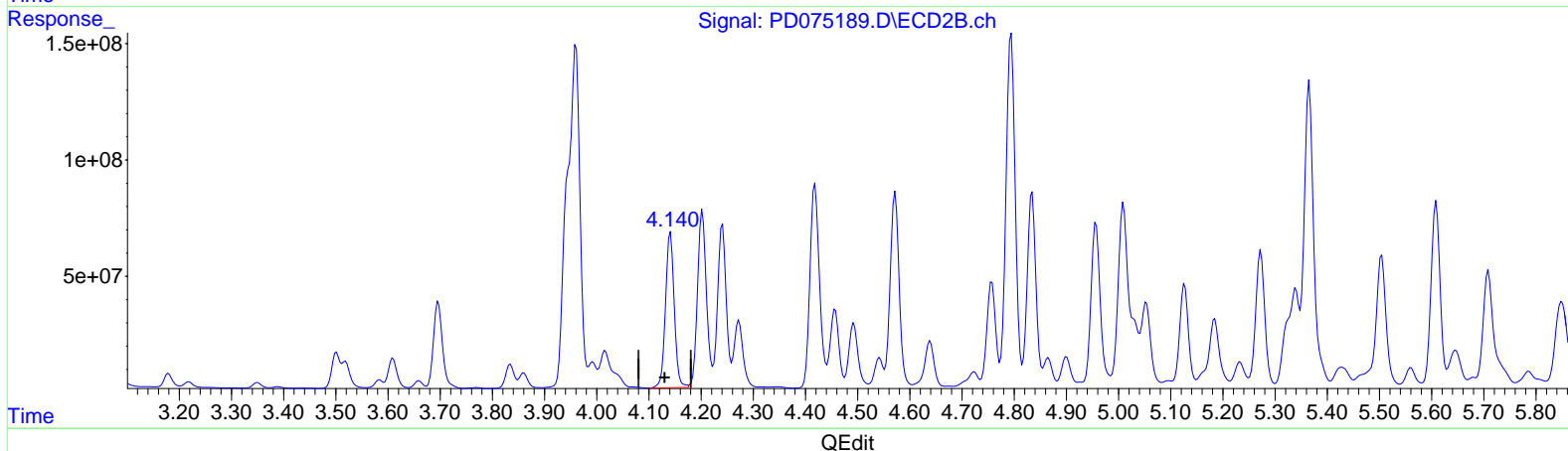
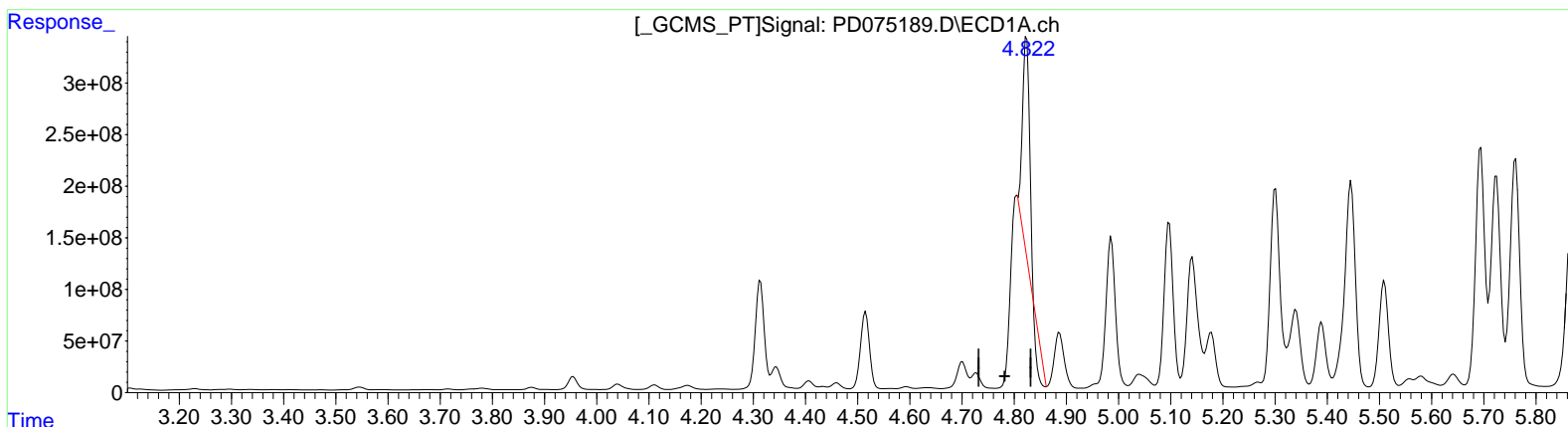
Instrument :
 ECD_D
 ClientSampleId :
 EW913

Manual Integrations APPROVED

Reviewed By : Abdul Mirza 05/04/2023
 Supervised By : Ankita Jodhani 05/05/2023

Integration File signal 1: autoint1.e
 Integration File signal 2: autoint2.e
 Quant Time: May 04 03:00:41 2023
 Quant Method : Z:\pestpcbsrv\HPCHEM1\ECD_D\Method\PD050323CLP.M
 Quant Title : GC Extractables
 QLast Update : Thu May 04 02:14:07 2023
 Response via : Initial Calibration
 Integrator: ChemStation

Volume Inj. : 1 µl
 Signal #1 Phase : ZB-MR1 Signal #2 Phase: ZB-MR2
 Signal #1 Info : 30M x 0.32mm x 0.5 Signal #2 Info : 30M x 0.32mm x 0.25µm



(7) delta-BHC (B)
 4.824min 517.415 ng/ml
 response 1748937080

(7) delta-BHC #2 (B)
 4.141min 490.267 ng/ml
 response 774668327

Data Path : Z:\pestpcbsrv\HPCHEM1\ECD_D\Data\PD050323\
 Data File : PD075189.D
 Signal(s) : Signal #1: ECD1A.ch Signal #2: ECD2B.ch
 Acq On : 04 May 2023 01:34
 Operator : AR\AJ
 Sample : 02447-08
 Misc :
 ALS Vial : 31 Sample Multiplier: 1

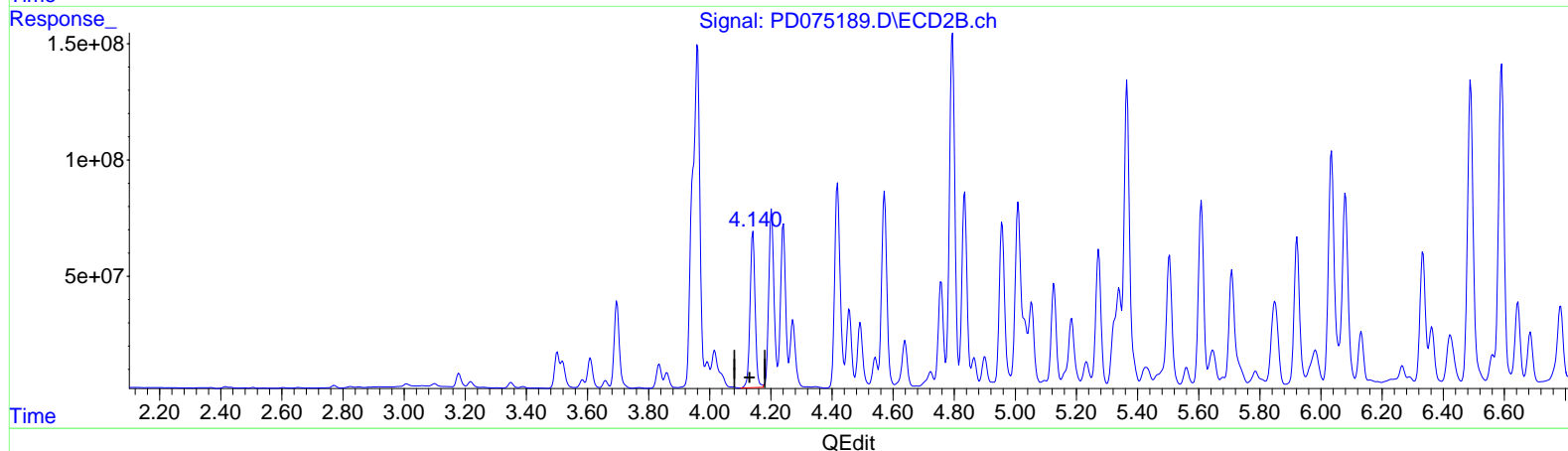
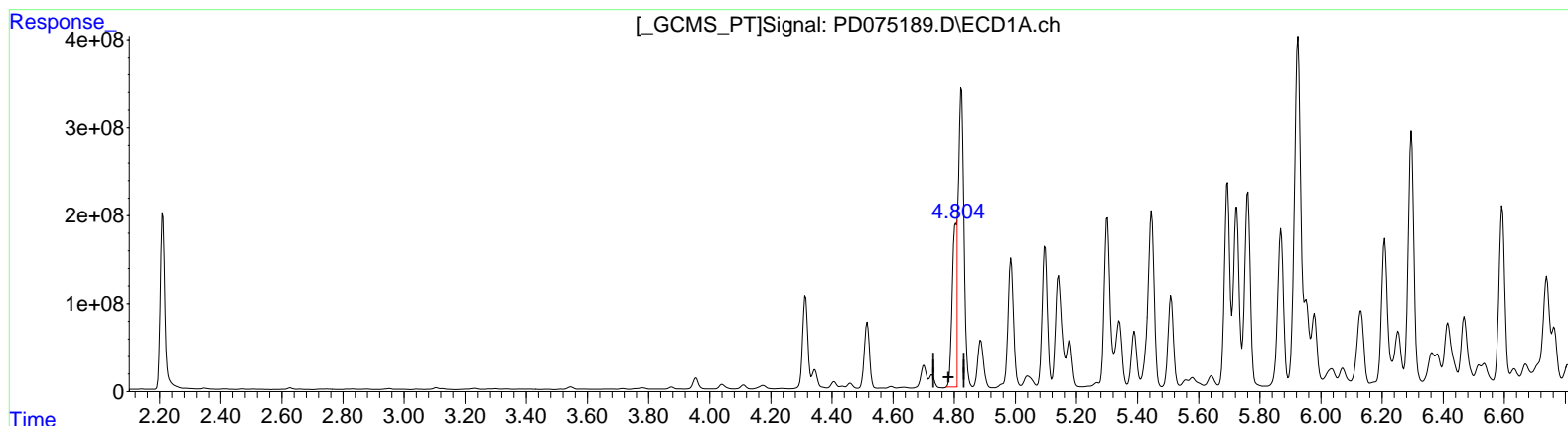
Instrument :
 ECD_D
 ClientSampleId :
 EW913

Manual Integrations APPROVED

Reviewed By : Abdul Mirza 05/04/2023
 Supervised By : Ankita Jodhani 05/05/2023

Integration File signal 1: autoint1.e
 Integration File signal 2: autoint2.e
 Quant Time: May 04 03:00:41 2023
 Quant Method : Z:\pestpcbsrv\HPCHEM1\ECD_D\Method\PD050323CLP.M
 Quant Title : GC Extractables
 QLast Update : Thu May 04 02:14:07 2023
 Response via : Initial Calibration
 Integrator: ChemStation

Volume Inj. : 1 µl
 Signal #1 Phase : ZB-MR1 Signal #2 Phase: ZB-MR2
 Signal #1 Info : 30M x 0.32mm x 0.5 Signal #2 Info : 30M x 0.32mm x 0.25µm



(7) delta-BHC (B)
 4.804min 594.709 ng/ml m
 response 2010204269

(7) delta-BHC #2 (B)
 4.141min 490.267 ng/ml
 response 774668327

Data Path : Z:\pestpcbsrv\HPCHEM1\ECD_D\Data\PD050323\
 Data File : PD075189.D
 Signal(s) : Signal #1: ECD1A.ch Signal #2: ECD2B.ch
 Acq On : 04 May 2023 01:34
 Operator : AR\AJ
 Sample : 02447-08
 Misc :
 ALS Vial : 31 Sample Multiplier: 1

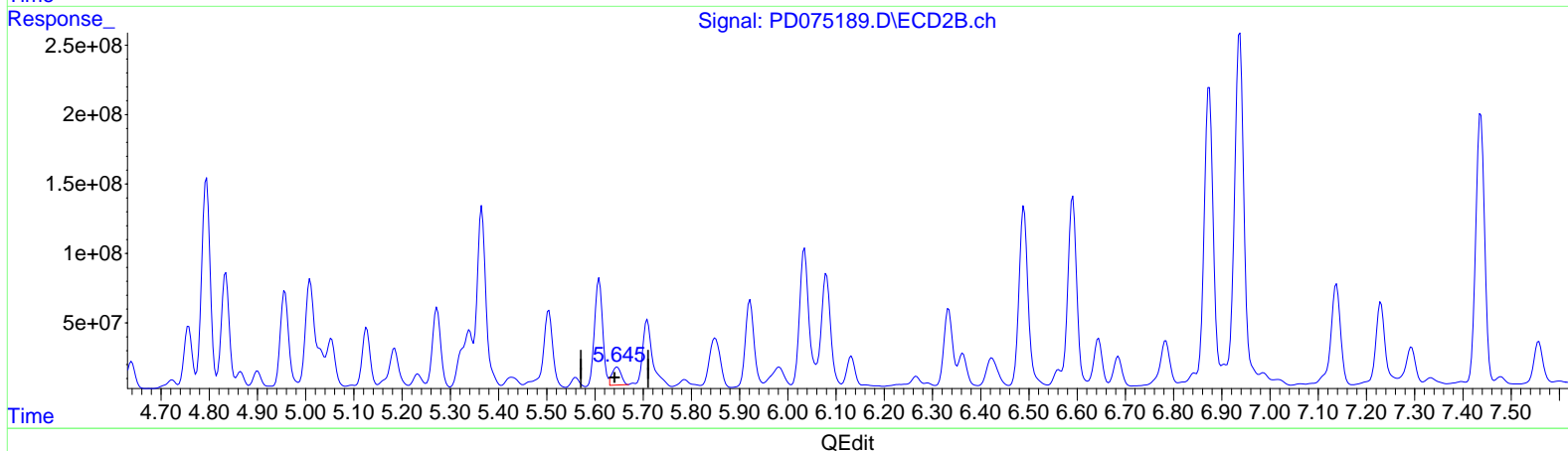
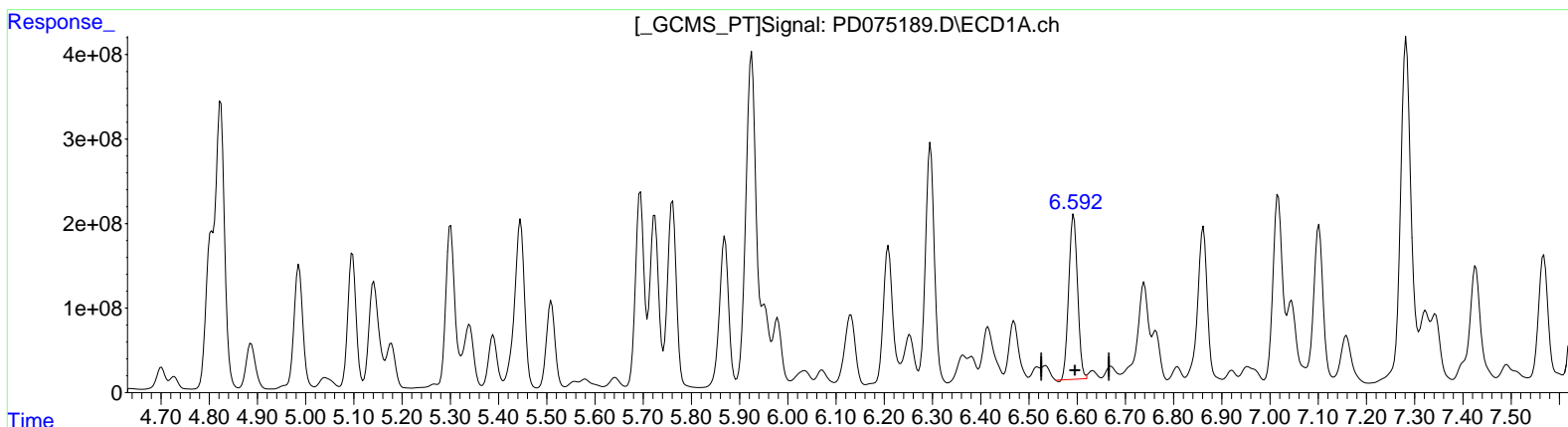
Instrument :
 ECD_D
ClientSampleId :
 EW913

Manual IntegrationsAPPROVED

Reviewed By :Abdul Mirza 05/04/2023
 Supervised By :Ankita Jodhani 05/05/2023

Integration File signal 1: autoint1.e
 Integration File signal 2: autoint2.e
 Quant Time: May 04 03:00:41 2023
 Quant Method : Z:\pestpcbsrv\HPCHEM1\ECD_D\Method\PD050323CLP.M
 Quant Title : GC Extractables
 QLast Update : Thu May 04 02:14:07 2023
 Response via : Initial Calibration
 Integrator: ChemStation

Volume Inj. : 1 µl
 Signal #1 Phase : ZB-MR1 Signal #2 Phase: ZB-MR2
 Signal #1 Info : 30M x 0.32mm x0.5 Signal #2 Info : 30M x 0.32mm x 0.25µm



(14) Endrin (MA)
 6.593min 856.250 ng/ml
 response 2476096637

(14) Endrin #2 (MA)
 5.646min 143.163 ng/ml
 response 174131384

Data Path : Z:\pestpcbsrv\HPCHEM1\ECD_D\Data\PD050323\
 Data File : PD075189.D
 Signal(s) : Signal #1: ECD1A.ch Signal #2: ECD2B.ch
 Acq On : 04 May 2023 01:34
 Operator : AR\AJ
 Sample : 02447-08
 Misc :
 ALS Vial : 31 Sample Multiplier: 1

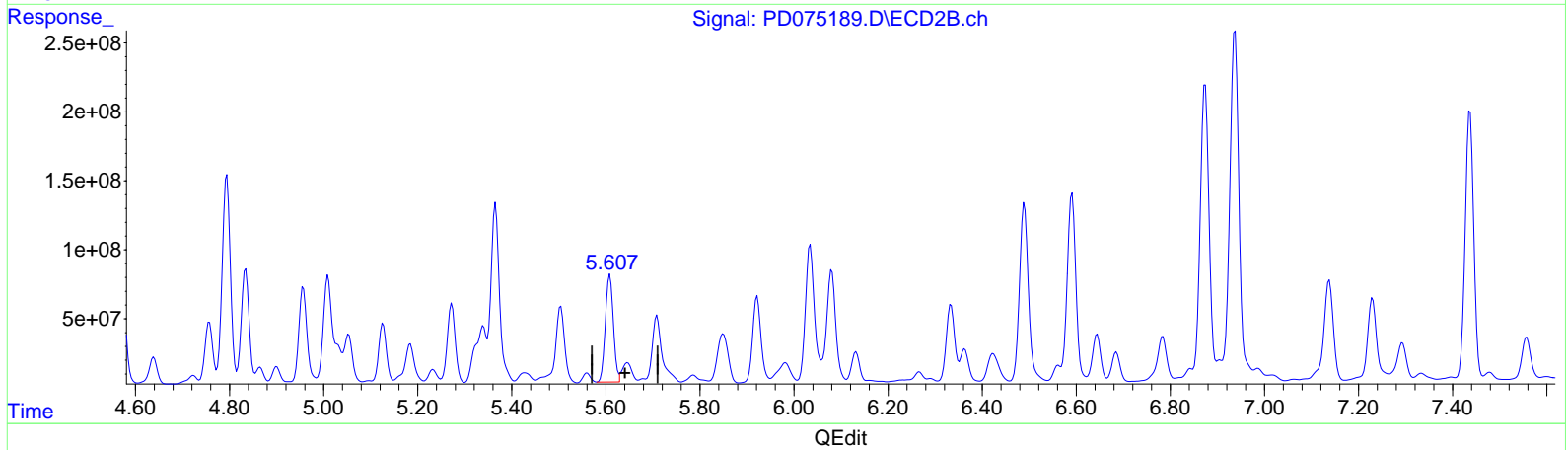
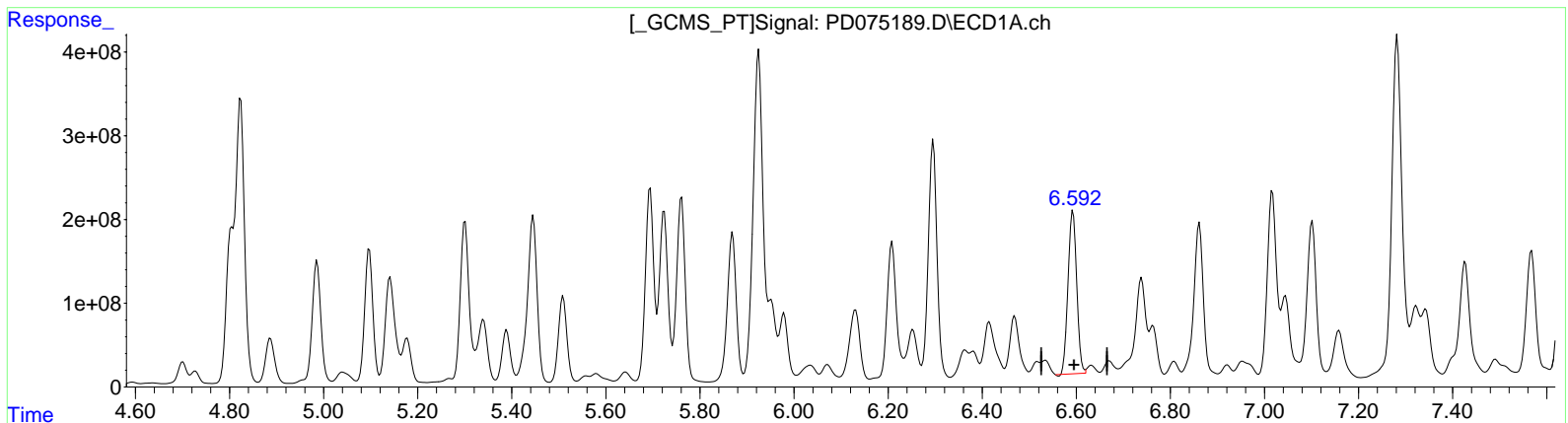
Instrument :
 ECD_D
 ClientSampleId :
 EW913

Manual Integrations APPROVED

Reviewed By : Abdul Mirza 05/04/2023
 Supervised By : Ankita Jodhani 05/05/2023

Integration File signal 1: autoint1.e
 Integration File signal 2: autoint2.e
 Quant Time: May 04 03:00:41 2023
 Quant Method : Z:\pestpcbsrv\HPCHEM1\ECD_D\Method\PD050323CLP.M
 Quant Title : GC Extractables
 QLast Update : Thu May 04 02:14:07 2023
 Response via : Initial Calibration
 Integrator: ChemStation

Volume Inj. : 1 µl
 Signal #1 Phase : ZB-MR1 Signal #2 Phase: ZB-MR2
 Signal #1 Info : 30M x 0.32mm x 0.5 Signal #2 Info : 30M x 0.32mm x 0.25µm



(14) Endrin (MA)
 6.593min 856.250 ng/ml
 response 2476096637

(14) Endrin #2 (MA)
 5.607min 760.435 ng/ml m
 response 924932506

Data Path : Z:\pestpcbsrv\HPCHEM1\ECD_D\Data\PD050323\
 Data File : PD075189.D
 Signal(s) : Signal #1: ECD1A.ch Signal #2: ECD2B.ch
 Acq On : 04 May 2023 01:34
 Operator : AR\AJ
 Sample : 02447-08
 Misc :
 ALS Vial : 31 Sample Multiplier: 1

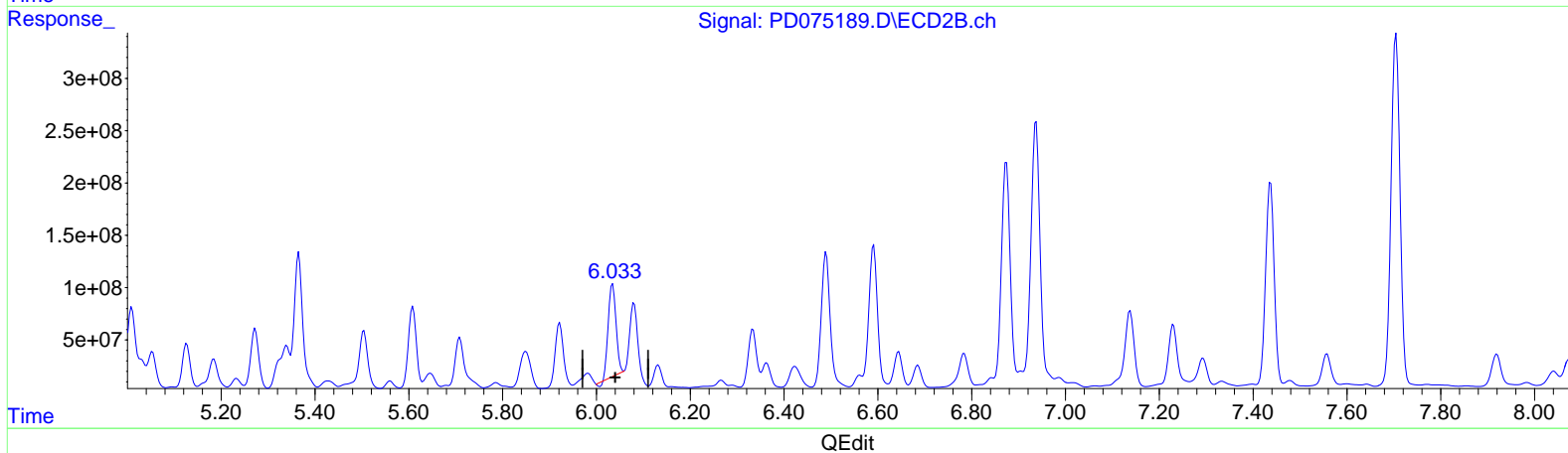
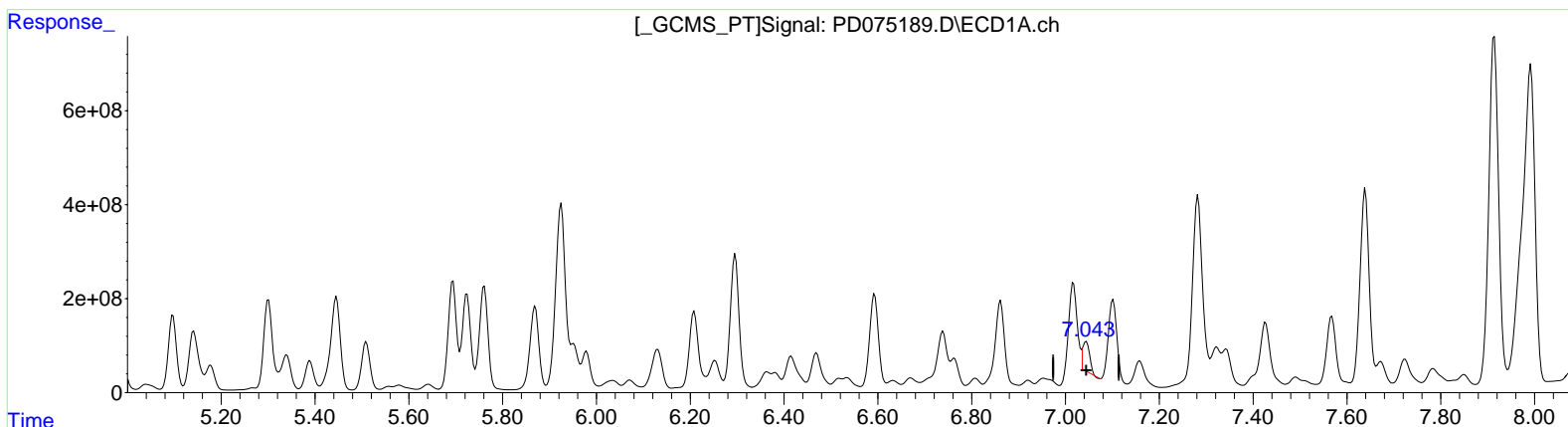
Instrument :
 ECD_D
 ClientSampleId :
 EW913

Manual Integrations APPROVED

Reviewed By : Abdul Mirza 05/04/2023
 Supervised By : Ankita Jodhani 05/05/2023

Integration File signal 1: autoint1.e
 Integration File signal 2: autoint2.e
 Quant Time: May 04 03:00:41 2023
 Quant Method : Z:\pestpcbsrv\HPCHEM1\ECD_D\Method\PD050323CLP.M
 Quant Title : GC Extractables
 QLast Update : Thu May 04 02:14:07 2023
 Response via : Initial Calibration
 Integrator: ChemStation

Volume Inj. : 1 µl
 Signal #1 Phase : ZB-MR1 Signal #2 Phase: ZB-MR2
 Signal #1 Info : 30M x 0.32mm x 0.5 Signal #2 Info : 30M x 0.32mm x 0.25µm



(17) 4,4'-DDT (MA)
 7.044min 258.351 ng/ml
 response 655757913

(17) 4,4'-DDT #2 (MA)
 6.035min 999.166 ng/ml
 response 1007030073

Data Path : Z:\pestpcbsrv\HPCHEM1\ECD_D\Data\PD050323\
 Data File : PD075189.D
 Signal(s) : Signal #1: ECD1A.ch Signal #2: ECD2B.ch
 Acq On : 04 May 2023 01:34
 Operator : AR\AJ
 Sample : 02447-08
 Misc :
 ALS Vial : 31 Sample Multiplier: 1

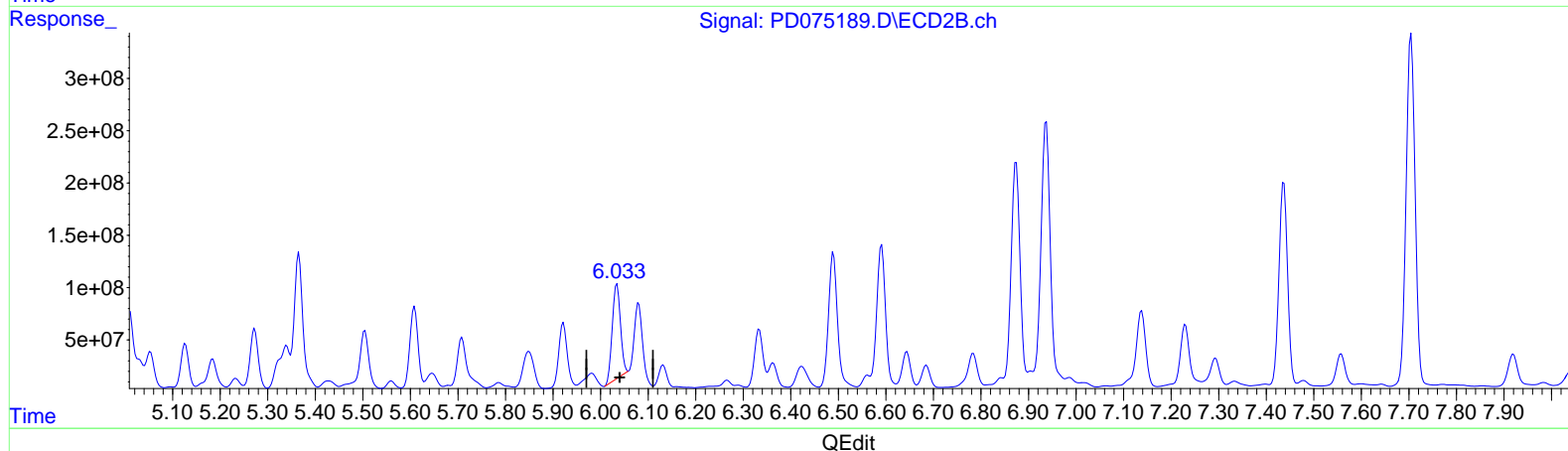
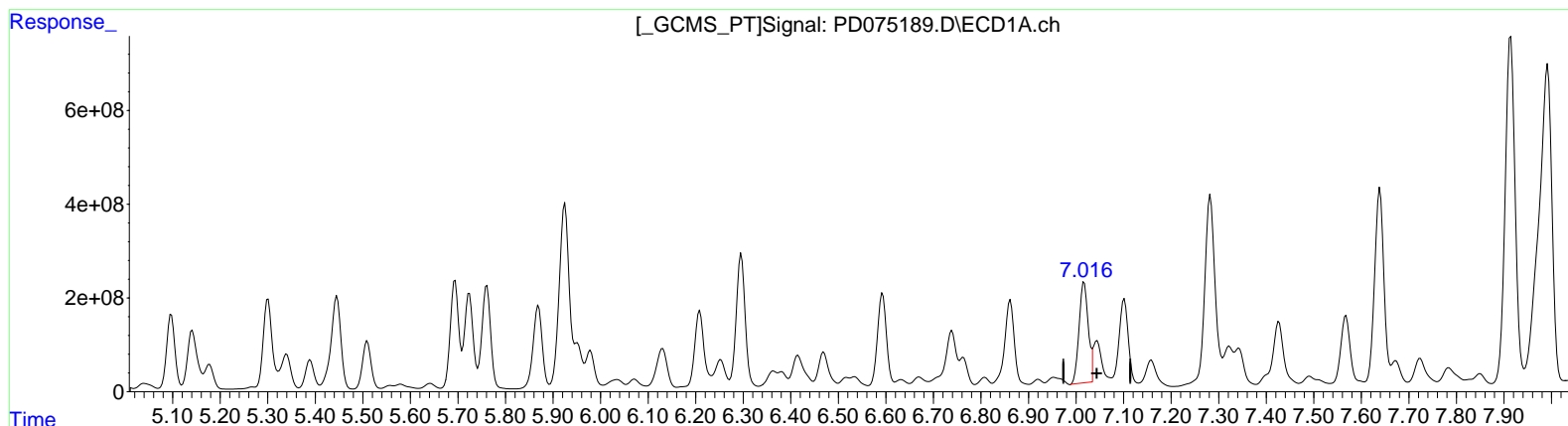
Instrument :
 ECD_D
 ClientSampleId :
 EW913

Manual Integrations APPROVED

Reviewed By : Abdul Mirza 05/04/2023
 Supervised By : Ankita Jodhani 05/05/2023

Integration File signal 1: autoint1.e
 Integration File signal 2: autoint2.e
 Quant Time: May 04 03:00:41 2023
 Quant Method : Z:\pestpcbsrv\HPCHEM1\ECD_D\Method\PD050323CLP.M
 Quant Title : GC Extractables
 QLast Update : Thu May 04 02:14:07 2023
 Response via : Initial Calibration
 Integrator: ChemStation

Volume Inj. : 1 µl
 Signal #1 Phase : ZB-MR1 Signal #2 Phase: ZB-MR2
 Signal #1 Info : 30M x 0.32mm x 0.5 Signal #2 Info : 30M x 0.32mm x 0.25µm



(17) 4,4'-DDT (MA)
 7.016min 1201.273 ng/ml m
 response 3049124303

(17) 4,4'-DDT #2 (MA)
 6.033min 1078.207 ng/ml m
 response 1086692484

Data Path : Z:\pestpcbsrv\HPCHEM1\ECD_D\Data\PD050323\
 Data File : PD075189.D
 Signal(s) : Signal #1: ECD1A.ch Signal #2: ECD2B.ch
 Acq On : 04 May 2023 01:34
 Operator : AR\AJ
 Sample : 02447-08
 Misc :
 ALS Vial : 31 Sample Multiplier: 1

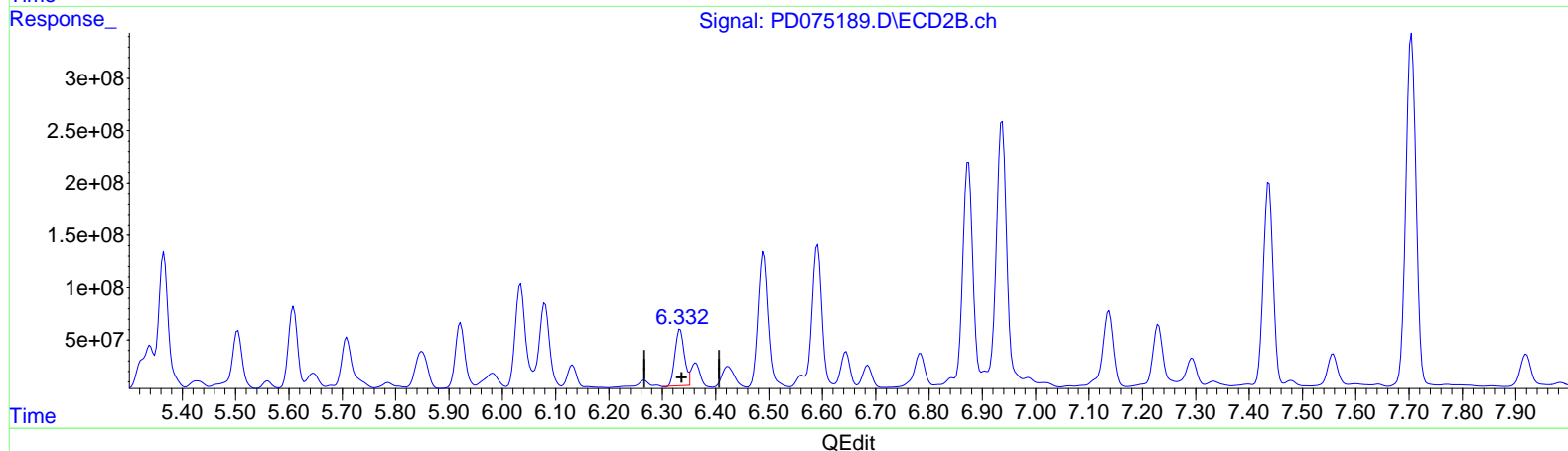
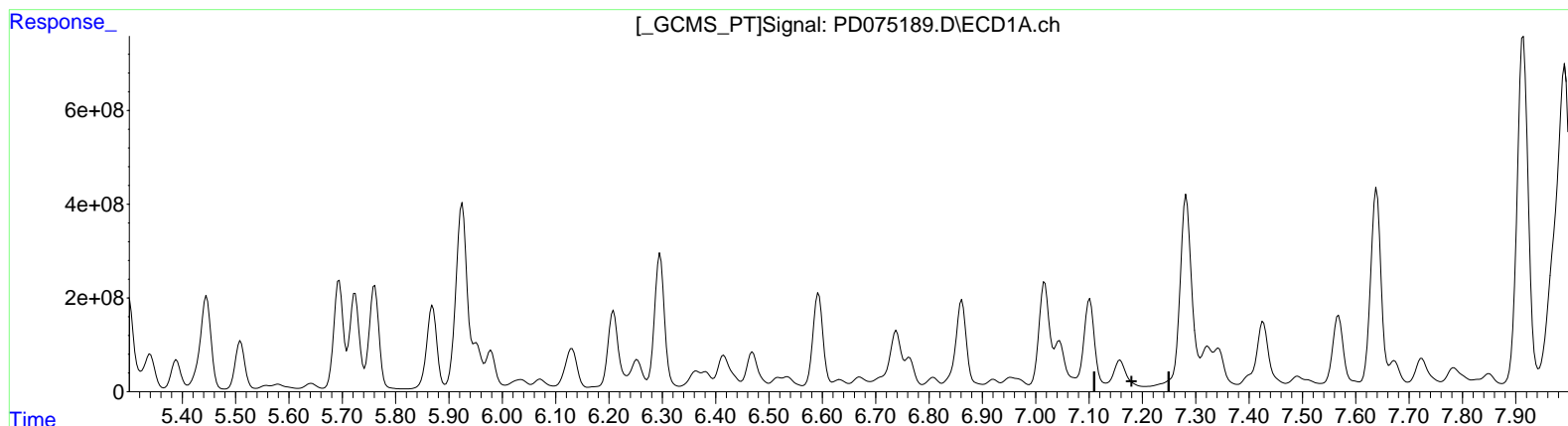
Instrument :
 ECD_D
 ClientSampleId :
 EW913

Manual Integrations APPROVED

Reviewed By : Abdul Mirza 05/04/2023
 Supervised By : Ankita Jodhani 05/05/2023

Integration File signal 1: autoint1.e
 Integration File signal 2: autoint2.e
 Quant Time: May 04 03:00:41 2023
 Quant Method : Z:\pestpcbsrv\HPCHEM1\ECD_D\Method\PD050323CLP.M
 Quant Title : GC Extractables
 QLast Update : Thu May 04 02:14:07 2023
 Response via : Initial Calibration
 Integrator: ChemStation

Volume Inj. : 1 µl
 Signal #1 Phase : ZB-MR1 Signal #2 Phase: ZB-MR2
 Signal #1 Info : 30M x 0.32mm x 0.5 Signal #2 Info : 30M x 0.32mm x 0.25µm



(19) Endosulfan Sulfate (B)
 0.000min 0.000 ng/ml
 response 0

(19) Endosulfan Sulfate #2 (B)
 6.334min 564.985 ng/ml
 response 657093405

Data Path : Z:\pestpcbsrv\HPCHEM1\ECD_D\Data\PD050323\
 Data File : PD075189.D
 Signal(s) : Signal #1: ECD1A.ch Signal #2: ECD2B.ch
 Acq On : 04 May 2023 01:34
 Operator : AR\AJ
 Sample : 02447-08
 Misc :
 ALS Vial : 31 Sample Multiplier: 1

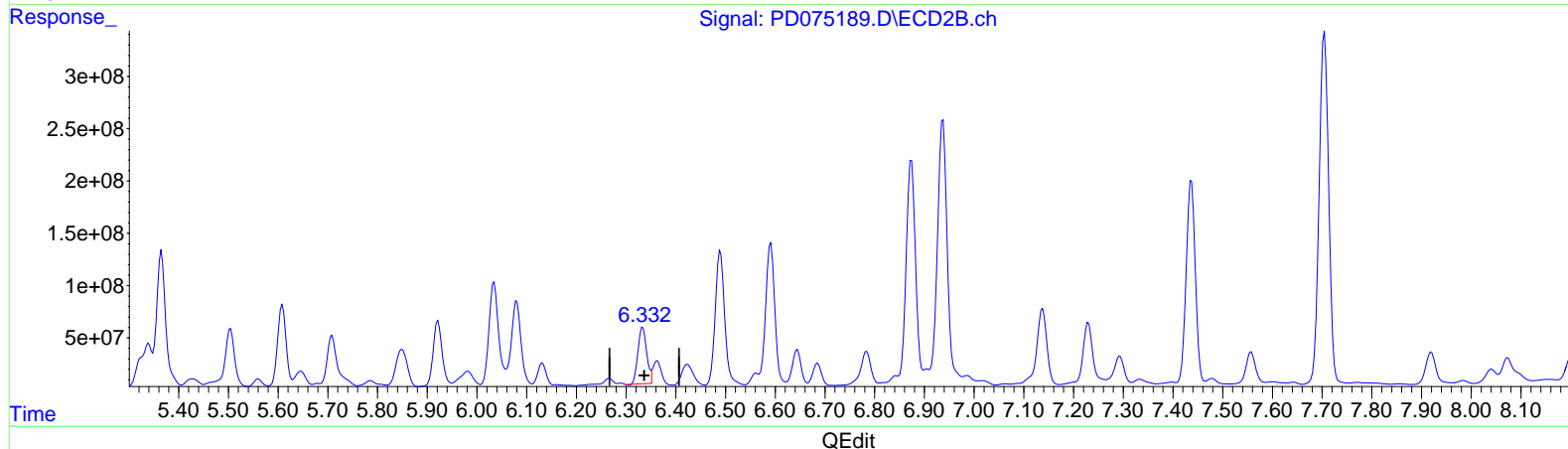
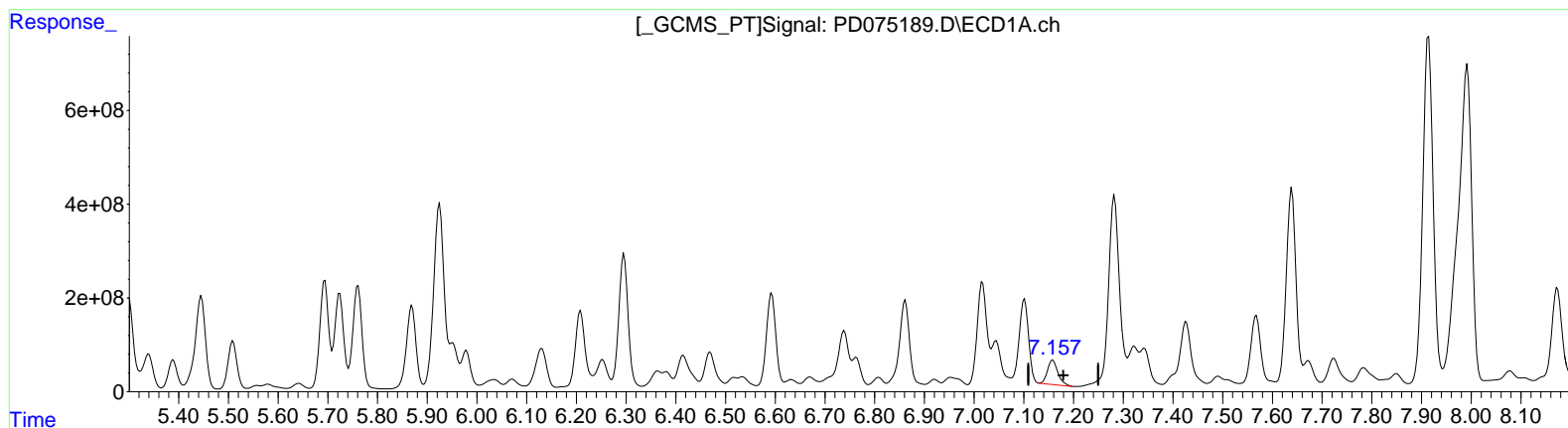
Instrument :
 ECD_D
 ClientSampleId :
 EW913

Manual Integrations APPROVED

Reviewed By : Abdul Mirza 05/04/2023
 Supervised By : Ankita Jodhani 05/05/2023

Integration File signal 1: autoint1.e
 Integration File signal 2: autoint2.e
 Quant Time: May 04 03:00:41 2023
 Quant Method : Z:\pestpcbsrv\HPCHEM1\ECD_D\Method\PD050323CLP.M
 Quant Title : GC Extractables
 QLast Update : Thu May 04 02:14:07 2023
 Response via : Initial Calibration
 Integrator: ChemStation

Volume Inj. : 1 µl
 Signal #1 Phase : ZB-MR1 Signal #2 Phase: ZB-MR2
 Signal #1 Info : 30M x 0.32mm x 0.5 Signal #2 Info : 30M x 0.32mm x 0.25µm



(19) Endosulfan Sulfate (B)
 7.157min 276.236 ng/ml m
 response 759861107

(19) Endosulfan Sulfate #2 (B)
 6.334min 564.985 ng/ml
 response 657093405

Data Path : Z:\pestpcbsrv\HPCHEM1\ECD_D\Data\PD050323\
 Data File : PD075189.D
 Signal(s) : Signal #1: ECD1A.ch Signal #2: ECD2B.ch
 Acq On : 04 May 2023 01:34
 Operator : AR\AJ
 Sample : 02447-08
 Misc :
 ALS Vial : 31 Sample Multiplier: 1

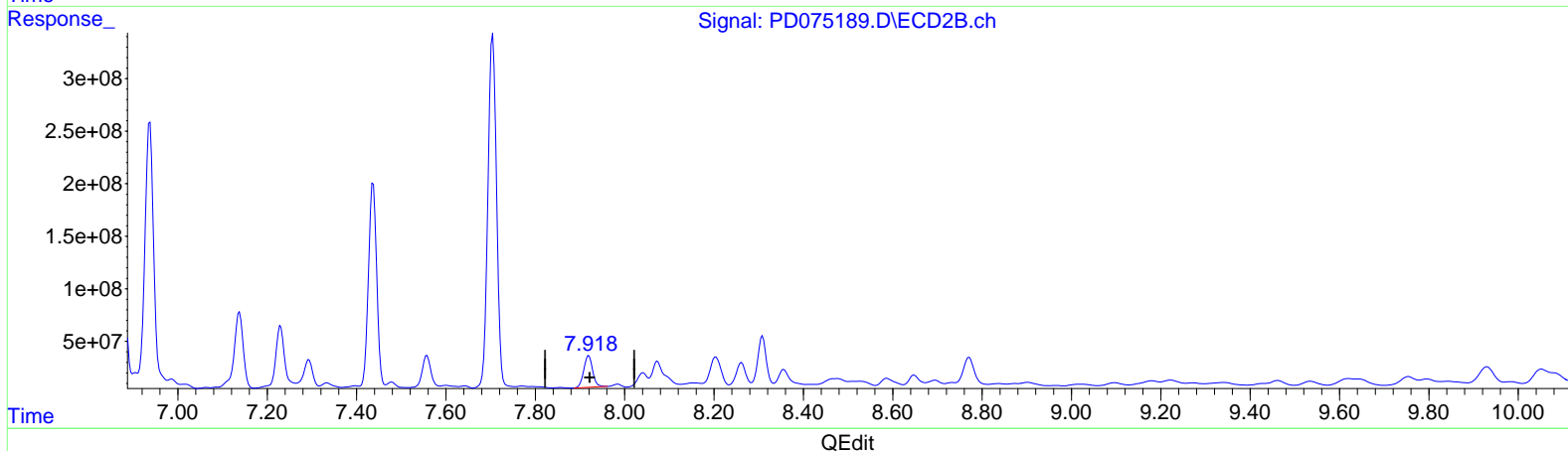
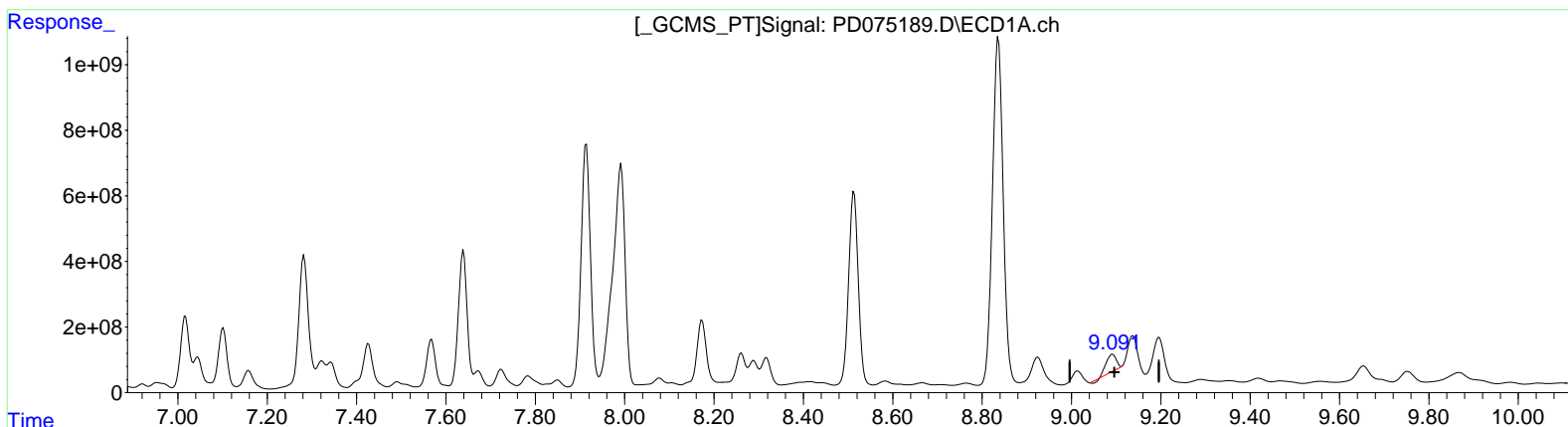
Instrument :
 ECD_D
 ClientSampleId :
 EW913

Manual Integrations APPROVED

Reviewed By : Abdul Mirza 05/04/2023
 Supervised By : Ankita Jodhani 05/05/2023

Integration File signal 1: autoint1.e
 Integration File signal 2: autoint2.e
 Quant Time: May 04 03:00:41 2023
 Quant Method : Z:\pestpcbsrv\HPCHEM1\ECD_D\Method\PD050323CLP.M
 Quant Title : GC Extractables
 QLast Update : Thu May 04 02:14:07 2023
 Response via : Initial Calibration
 Integrator: ChemStation

Volume Inj. : 1 µl
 Signal #1 Phase : ZB-MR1 Signal #2 Phase: ZB-MR2
 Signal #1 Info : 30M x 0.32mm x 0.5 Signal #2 Info : 30M x 0.32mm x 0.25µm



(27) Decachlorobiphenyl (SA)

9.092min 310.377 ng/ml

response 768095670

(27) Decachlorobiphenyl #2 (SA)

7.920min 441.840 ng/ml

response 417267689

Data Path : Z:\pestpcbsrv\HPCHEM1\ECD_D\Data\PD050323\
 Data File : PD075189.D
 Signal(s) : Signal #1: ECD1A.ch Signal #2: ECD2B.ch
 Acq On : 04 May 2023 01:34
 Operator : AR\AJ
 Sample : 02447-08
 Misc :
 ALS Vial : 31 Sample Multiplier: 1

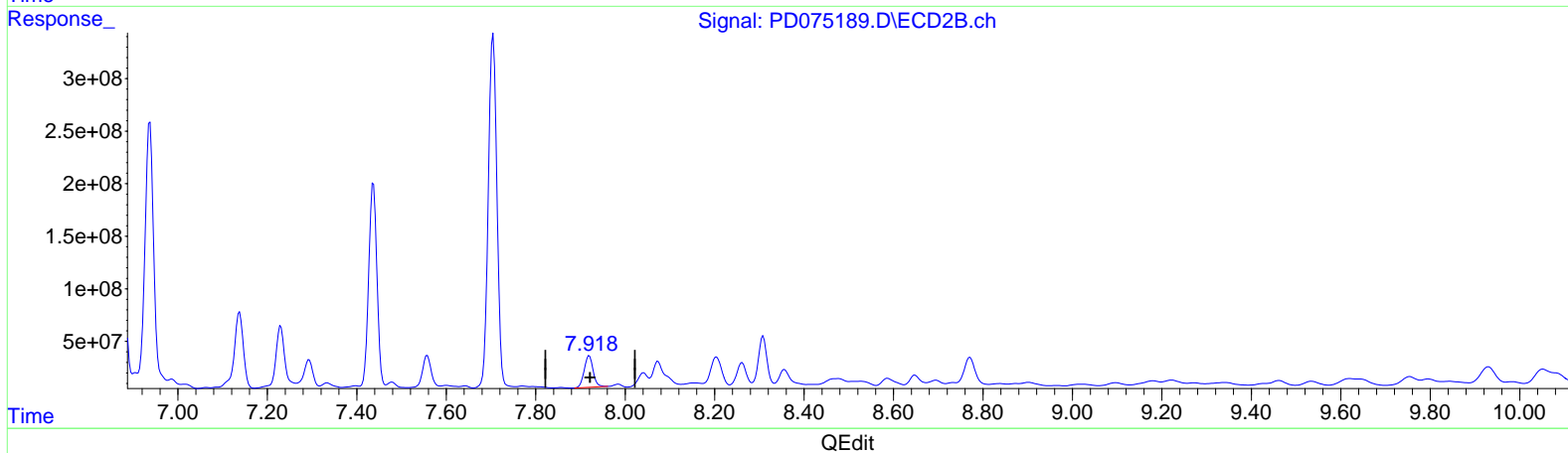
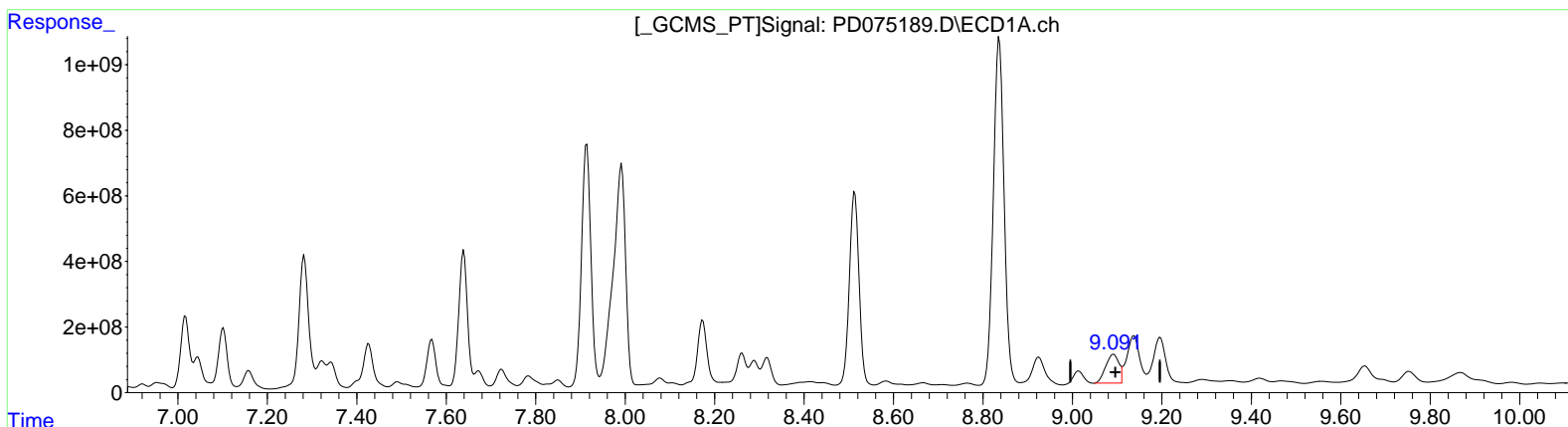
Instrument :
 ECD_D
 ClientSampleId :
 EW913

Manual Integrations APPROVED

Reviewed By : Abdul Mirza 05/04/2023
 Supervised By : Ankita Jodhani 05/05/2023

Integration File signal 1: autoint1.e
 Integration File signal 2: autoint2.e
 Quant Time: May 04 03:00:41 2023
 Quant Method : Z:\pestpcbsrv\HPCHEM1\ECD_D\Method\PD050323CLP.M
 Quant Title : GC Extractables
 QLast Update : Thu May 04 02:14:07 2023
 Response via : Initial Calibration
 Integrator: ChemStation

Volume Inj. : 1 µl
 Signal #1 Phase : ZB-MR1 Signal #2 Phase: ZB-MR2
 Signal #1 Info : 30M x 0.32mm x 0.5 Signal #2 Info : 30M x 0.32mm x 0.25µm



(27) Decachlorobiphenyl (SA)

9.091min 709.504 ng/ml m

response 1755820296

(27) Decachlorobiphenyl #2 (SA)

7.920min 441.840 ng/ml

response 417267689