

Data Path : Z:\pestpcbsrv\HPCHEM1\ECD\_D\Data\PD050523\  
 Data File : PD075310.D  
 Signal(s) : Signal #1: ECD1A.ch Signal #2: ECD2B.ch  
 Acq On : 06 May 2023 04:19  
 Operator : AR\AJ  
 Sample : 02479-22MSD  
 Misc :  
 ALS Vial : 48 Sample Multiplier: 1

Integration File signal 1: autoint1.e  
 Integration File signal 2: autoint2.e  
 Quant Time: May 06 08:48:32 2023  
 Quant Method : Z:\pestpcbsrv\HPCHEM1\ECD\_D\Method\PD050323CLP.M  
 Quant Title : GC Extractables  
 QLast Update : Thu May 04 02:14:07 2023  
 Response via : Initial Calibration  
 Integrator: ChemStation

Volume Inj. : 1 µl  
 Signal #1 Phase : ZB-MR1 Signal #2 Phase: ZB-MR2  
 Signal #1 Info : 30M x 0.32mm x0.5 Signal #2 Info : 30M x 0.32mm x 0.25µm

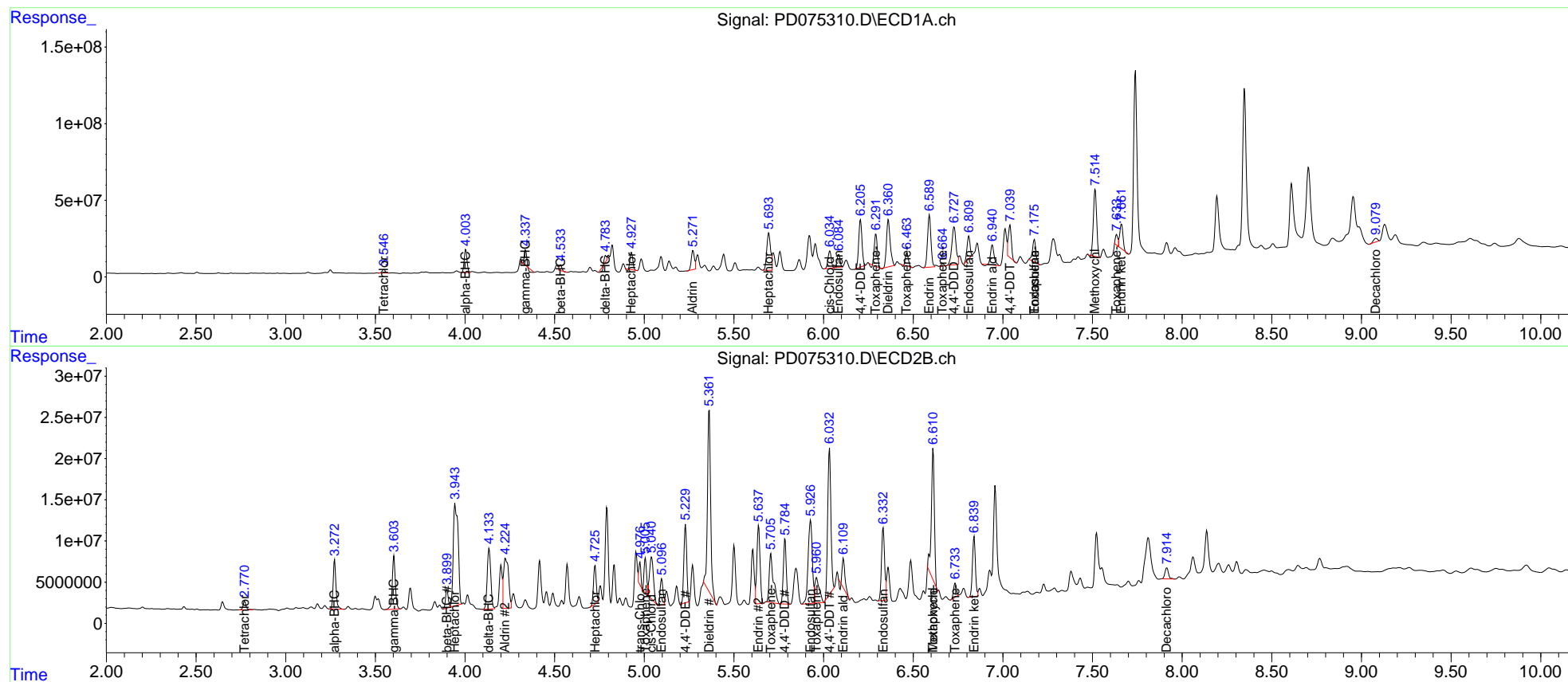
Compound	RT#1	RT#2	Resp#1	Resp#2	ng/ml	ng/ml
-----						
System Monitoring Compounds						
1) SA Tetrachlo...	3.548	2.771	26295825	12262751	11.529	11.626
27) SA Decachlor...	9.082	7.915	34840088	18424596	14.078	19.510 #
Target Compounds						
2) A alpha-BHC	4.004	3.273	164.0E6	64829663	42.657	41.853
3) MA gamma-BHC...	4.338	3.604	61927657	75483560	17.226	51.352 #
4) MA Heptachlor	4.929	3.945	118.6E6	230.9E6	31.811	158.019 #
5) MB Aldrin	5.272	4.226	147.6E6	118.8E6	40.476	80.083 #
6) B beta-BHC	4.534	3.900	36203707	22839987	22.055	31.367 #
7) B delta-BHC	4.784	4.135	6854313	101.8E6	2.028	64.421 #
8) B Heptachlo...	5.695	4.726	351.7E6	50144799	103.760	35.952 #
9) A Endosulfan I	6.085	5.097	98615348	35074293	32.693	29.225
10) B trans-Chl...	5.955	4.976	-25730848	23268415	N.D.	17.052
11) B cis-Chlor...	6.035	5.041	141.8E6	77691641	41.620	55.670 #
12) B 4,4'-DDE	6.206	5.230	390.6E6	103.4E6	119.599	80.430 #
13) MA Dieldrin	6.362	5.362	440.1E6	271.5E6	128.697	198.999 #
14) MA Endrin	6.591	5.638	444.8E6	117.0E6	153.814	96.216 #
15) B Endosulfa...	6.811	5.928	168.9E6	162.9E6	52.446	127.312 #
16) A 4,4'-DDD	6.729	5.785	399.8E6	90319755	165.430	91.105 #
17) MA 4,4'-DDT	7.040	6.033	248.8E6	218.0E6	98.009	216.288 #
18) B Endrin al...	6.942	6.111	179.1E6	37109596	75.694	36.544 #
19) B Endosulfa...	7.176	6.333	187.0E6	105.8E6	67.986	90.944 #
20) A Methoxychlor	7.515	6.611	558.0E6	188.8E6	379.876	329.550
21) B Endrin ke...	7.662	6.840	195.5E6	83629965	64.491	63.423
22) Toxaphene-1	6.292	5.006	238.7E6	43191081	10377.210	6253.480 #
23) Toxaphene-2	6.465	5.706	99023313	94581394	3318.583	11845.199 #
24) Toxaphene-3	6.665	5.961	16628031	52070054	788.287	5943.143 #
25) Toxaphene-4	7.176	6.611	187.0E6	188.8E6	2868.683	7455.671 #
26) Toxaphene-5	7.635f	6.734	64981245	18892753	1369.741	520.203 #

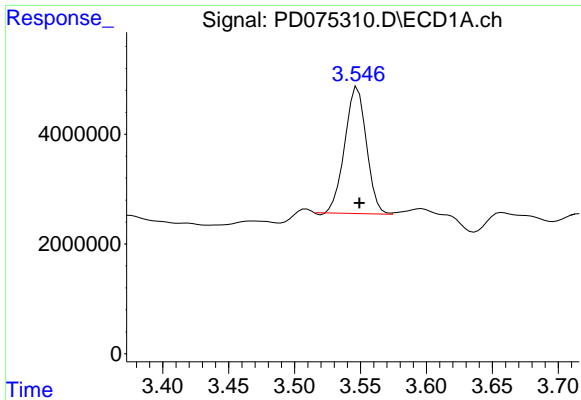
(f)=RT Delta > 1/2 Window (#)=Amounts differ by > 25% (m)=manual int.

Data Path : Z:\pestpcbsrv\HPCHEM1\ECD\_D\Data\PD050523\  
 Data File : PD075310.D  
 Signal(s) : Signal #1: ECD1A.ch Signal #2: ECD2B.ch  
 Acq On : 06 May 2023 04:19  
 Operator : AR\AJ  
 Sample : 02479-22MSD  
 Misc :  
 ALS Vial : 48 Sample Multiplier: 1

Integration File signal 1: autoint1.e  
 Integration File signal 2: autoint2.e  
 Quant Time: May 06 08:48:32 2023  
 Quant Method : Z:\pestpcbsrv\HPCHEM1\ECD\_D\Method\PD050323CLP.M  
 Quant Title : GC Extractables  
 QLast Update : Thu May 04 02:14:07 2023  
 Response via : Initial Calibration  
 Integrator: ChemStation

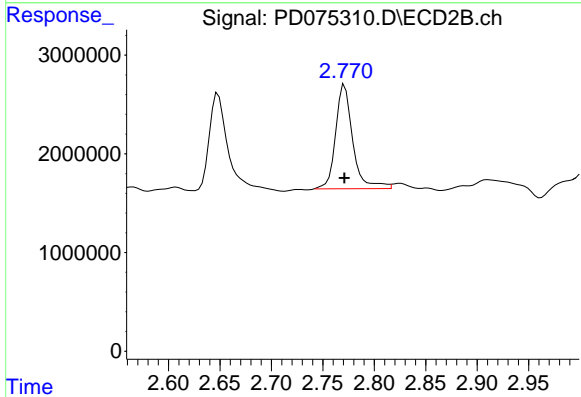
Volume Inj. : 1 µl  
 Signal #1 Phase : ZB-MR1 Signal #2 Phase: ZB-MR2  
 Signal #1 Info : 30M x 0.32mm x0.5 Signal #2 Info : 30M x 0.32mm x 0.25µm





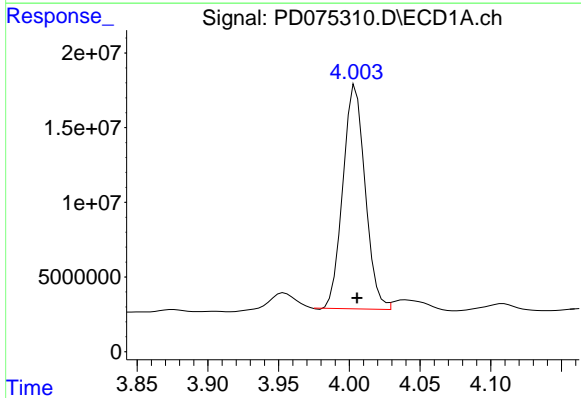
#1 Tetrachloro-m-xylene

R.T.: 3.548 min  
Delta R.T.: -0.001 min  
Response: 26295825  
Conc: 11.53 ng/ml



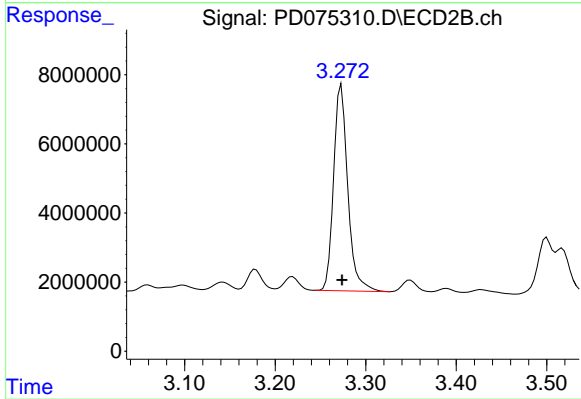
#1 Tetrachloro-m-xylene

R.T.: 2.771 min  
Delta R.T.: 0.000 min  
Response: 12262751  
Conc: 11.63 ng/ml



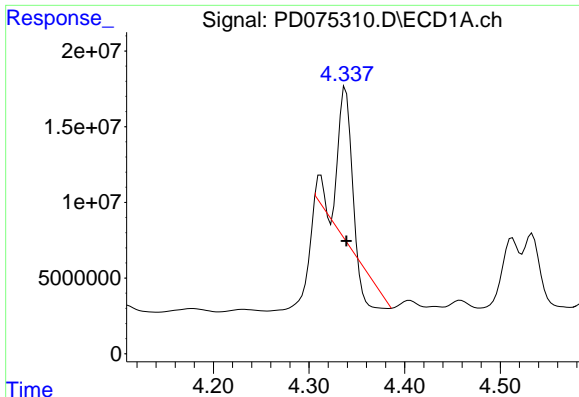
#2 alpha-BHC

R.T.: 4.004 min  
Delta R.T.: -0.001 min  
Response: 164038656  
Conc: 42.66 ng/ml

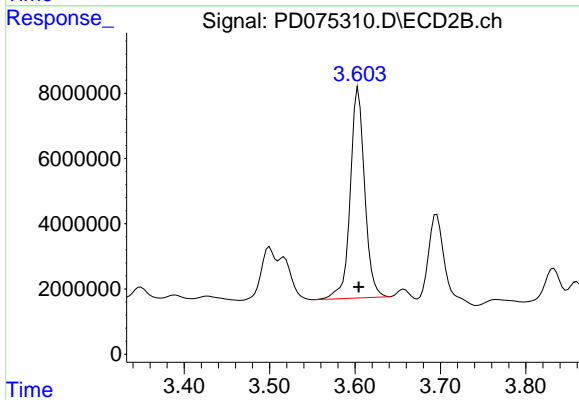


#2 alpha-BHC

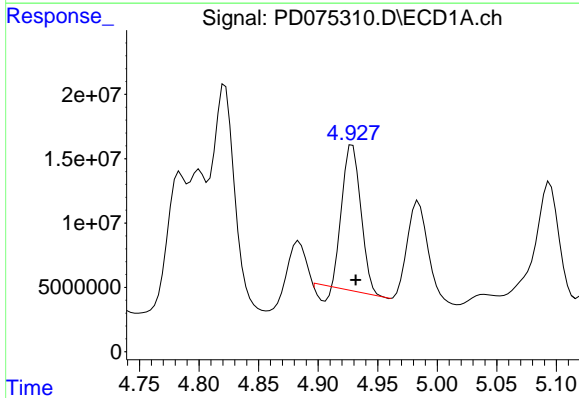
R.T.: 3.273 min  
Delta R.T.: 0.000 min  
Response: 64829663  
Conc: 41.85 ng/ml



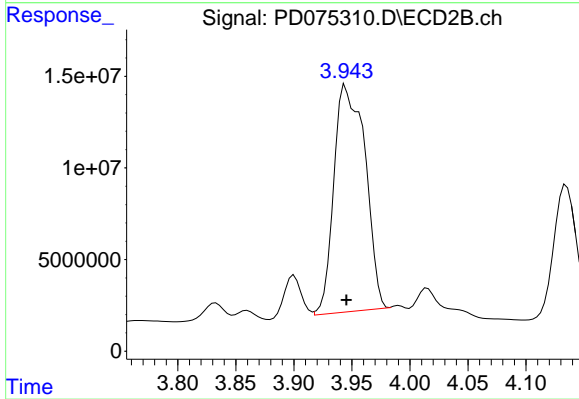
#3 gamma-BHC (Lindane)  
R.T.: 4.338 min  
Delta R.T.: 0.000 min  
Response: 61927657  
Conc: 17.23 ng/ml



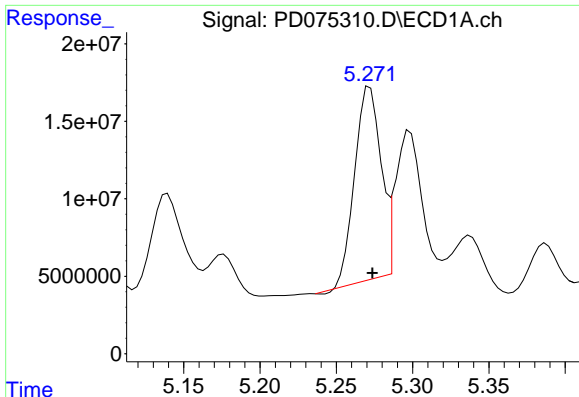
#3 gamma-BHC (Lindane)  
R.T.: 3.604 min  
Delta R.T.: 0.000 min  
Response: 75483560  
Conc: 51.35 ng/ml



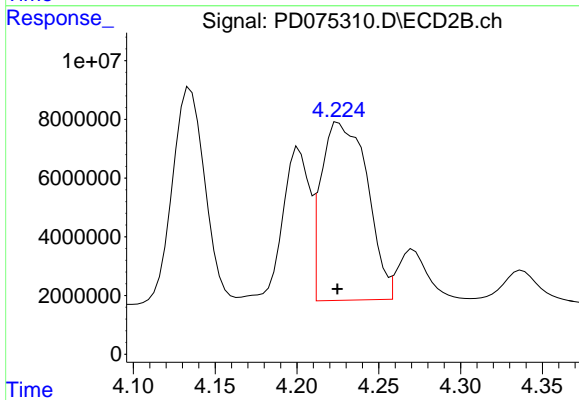
#4 Heptachlor  
R.T.: 4.929 min  
Delta R.T.: -0.003 min  
Response: 118590481  
Conc: 31.81 ng/ml



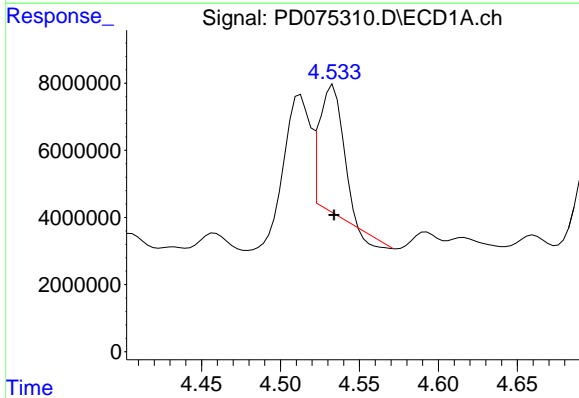
#4 Heptachlor  
R.T.: 3.945 min  
Delta R.T.: 0.000 min  
Response: 230897020  
Conc: 158.02 ng/ml



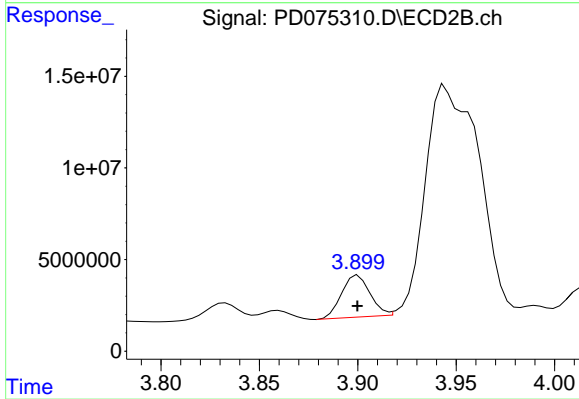
#5 Aldrin  
 R.T.: 5.272 min  
 Delta R.T.: -0.002 min  
 Response: 147640416  
 Conc: 40.48 ng/ml



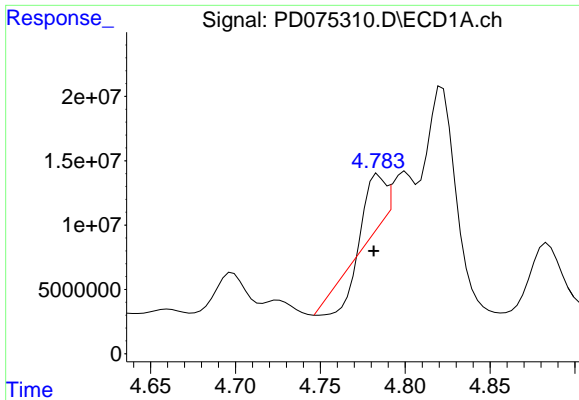
#5 Aldrin  
 R.T.: 4.226 min  
 Delta R.T.: 0.000 min  
 Response: 118770016  
 Conc: 80.08 ng/ml



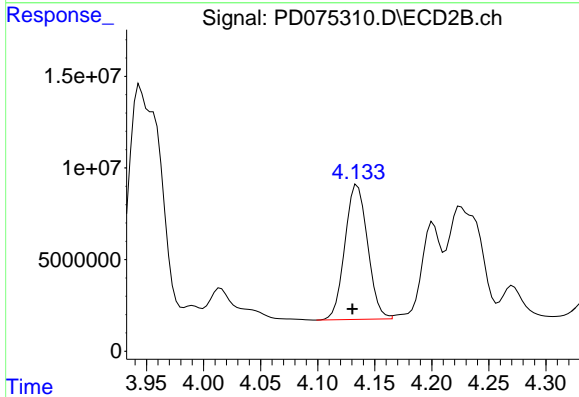
#6 beta-BHC  
 R.T.: 4.534 min  
 Delta R.T.: 0.000 min  
 Response: 36203707  
 Conc: 22.06 ng/ml



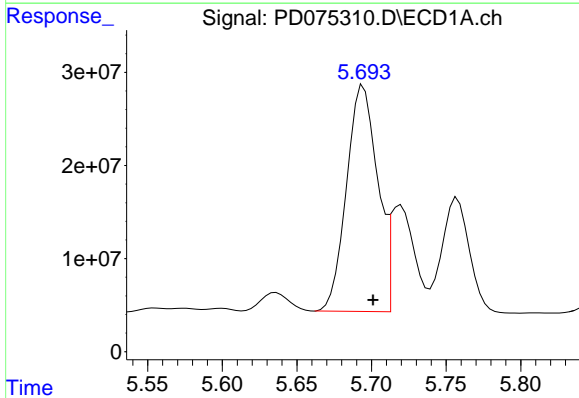
#6 beta-BHC  
 R.T.: 3.900 min  
 Delta R.T.: 0.000 min  
 Response: 22839987  
 Conc: 31.37 ng/ml



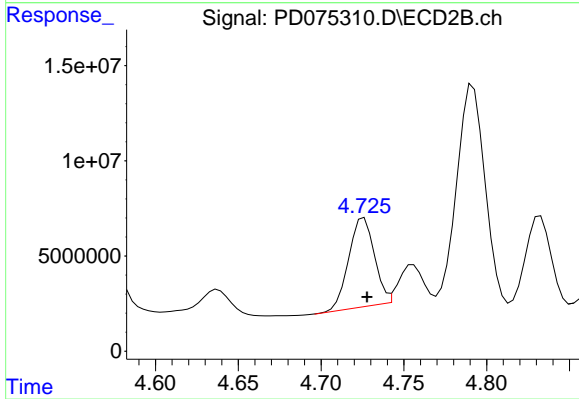
#7 delta-BHC  
R.T.: 4.784 min  
Delta R.T.: 0.003 min  
Response: 6854313  
Conc: 2.03 ng/ml



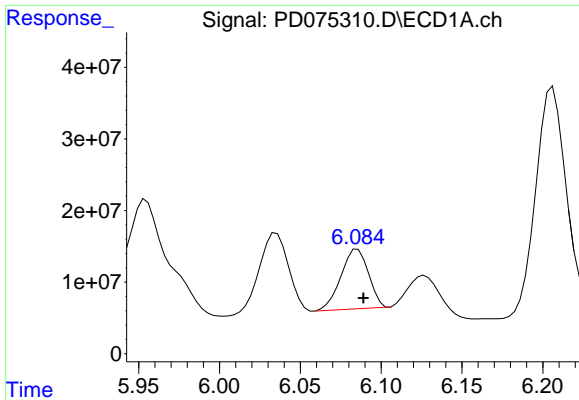
#7 delta-BHC  
R.T.: 4.135 min  
Delta R.T.: 0.004 min  
Response: 101790517  
Conc: 64.42 ng/ml



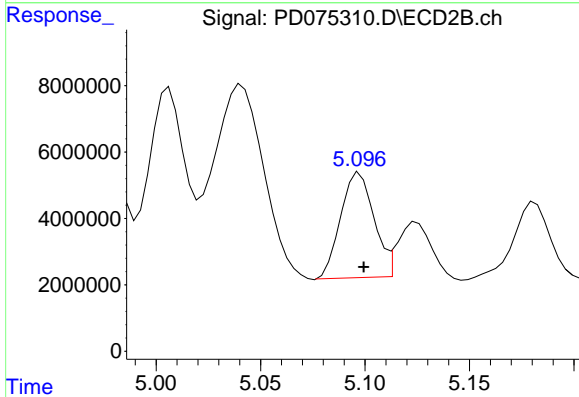
#8 Heptachlor epoxide  
R.T.: 5.695 min  
Delta R.T.: -0.006 min  
Response: 351675662  
Conc: 103.76 ng/ml



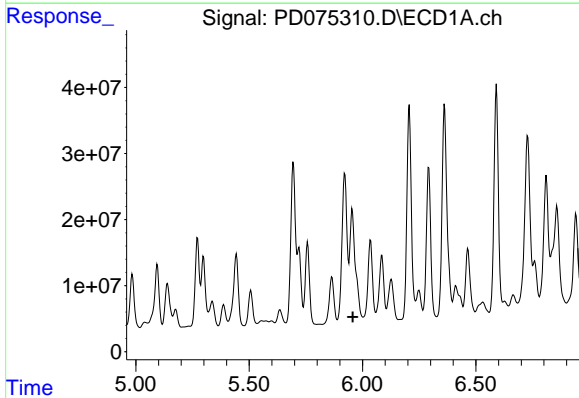
#8 Heptachlor epoxide  
R.T.: 4.726 min  
Delta R.T.: -0.002 min  
Response: 50144799  
Conc: 35.95 ng/ml



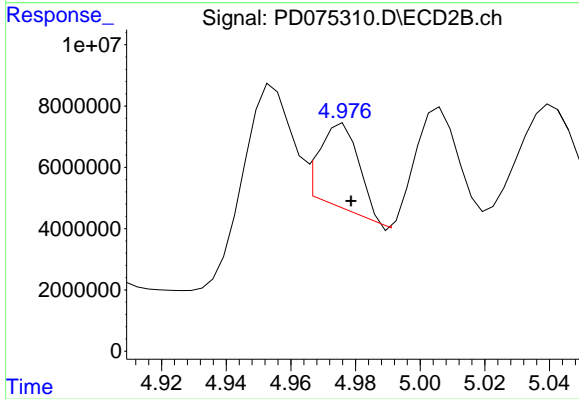
#9 Endosulfan I  
 R.T.: 6.085 min  
 Delta R.T.: -0.004 min  
 Response: 98615348  
 Conc: 32.69 ng/ml



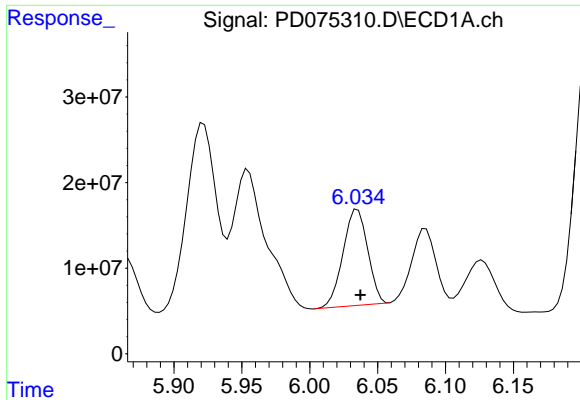
#9 Endosulfan I  
 R.T.: 5.097 min  
 Delta R.T.: -0.002 min  
 Response: 35074293  
 Conc: 29.22 ng/ml



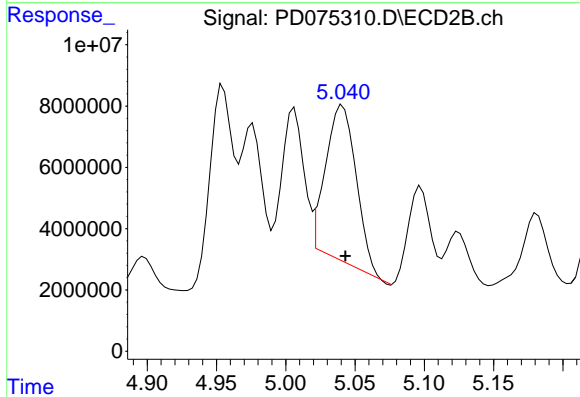
#10 trans-Chlordane  
 R.T.: 5.955 min  
 Delta R.T.: -0.003 min  
 Response: -25730848  
 Conc: N.D.



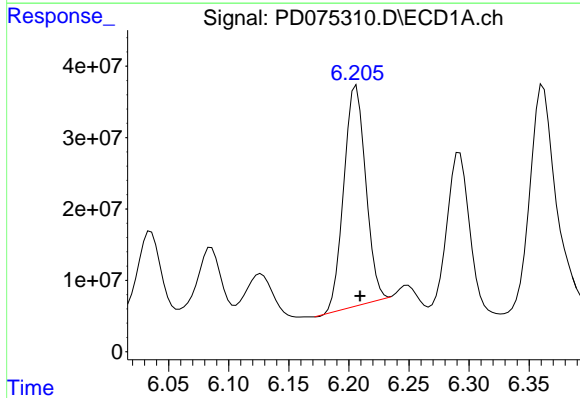
#10 trans-Chlordane  
 R.T.: 4.976 min  
 Delta R.T.: -0.002 min  
 Response: 23268415  
 Conc: 17.05 ng/ml



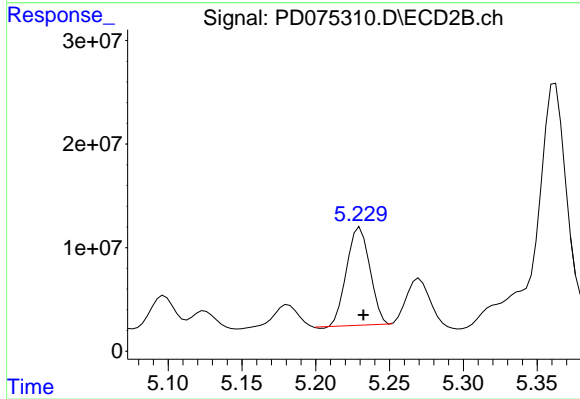
#11 cis-Chlordane  
R.T.: 6.035 min  
Delta R.T.: -0.002 min  
Response: 141840220  
Conc: 41.62 ng/ml



#11 cis-Chlordane  
R.T.: 5.041 min  
Delta R.T.: -0.002 min  
Response: 77691641  
Conc: 55.67 ng/ml

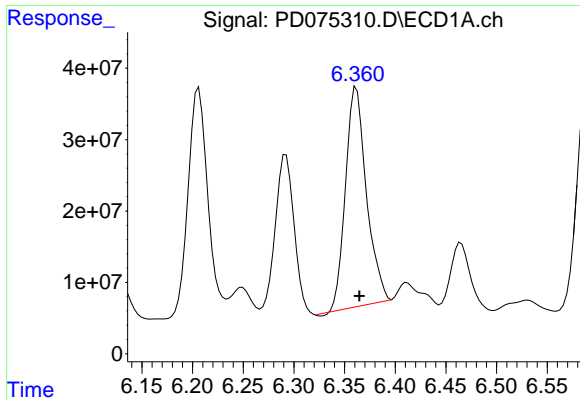


#12 4,4'-DDE  
R.T.: 6.206 min  
Delta R.T.: -0.003 min  
Response: 390560233  
Conc: 119.60 ng/ml



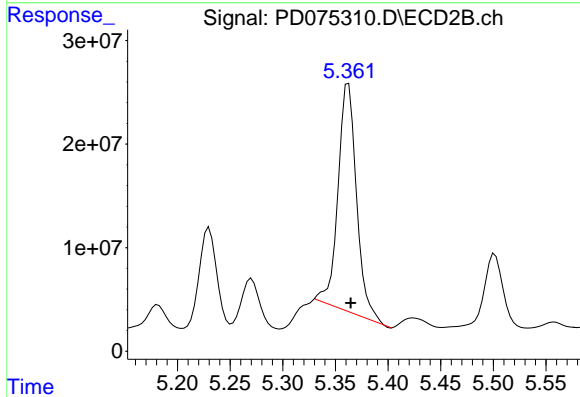
#12 4,4'-DDE  
R.T.: 5.230 min  
Delta R.T.: -0.002 min  
Response: 103397930  
Conc: 80.43 ng/ml





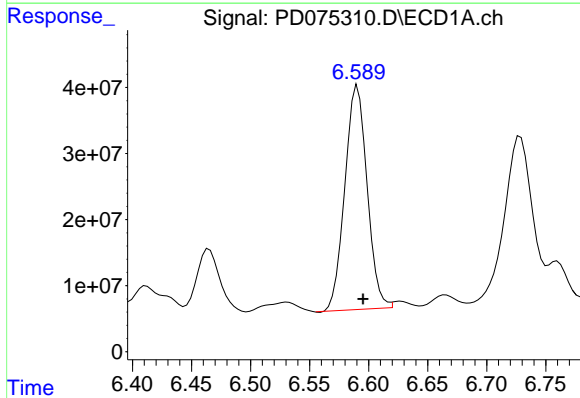
#13 Dieldrin

R.T.: 6.362 min  
 Delta R.T.: -0.003 min  
 Response: 440110789  
 Conc: 128.70 ng/ml



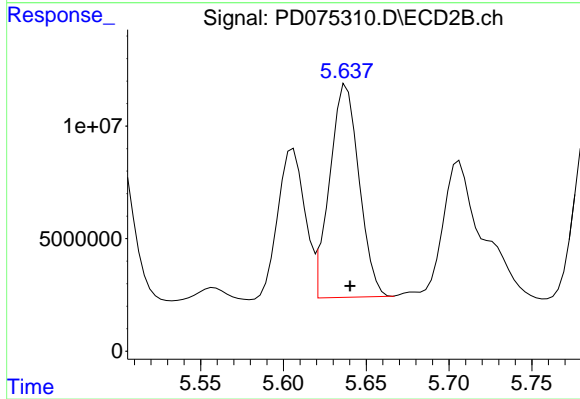
#13 Dieldrin

R.T.: 5.362 min  
 Delta R.T.: -0.002 min  
 Response: 271511431  
 Conc: 199.00 ng/ml



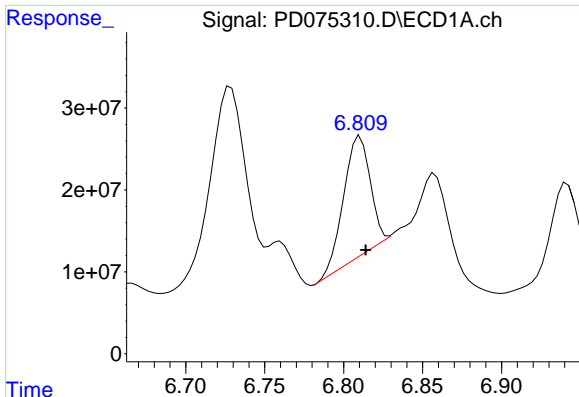
#14 Endrin

R.T.: 6.591 min  
 Delta R.T.: -0.005 min  
 Response: 444797016  
 Conc: 153.81 ng/ml



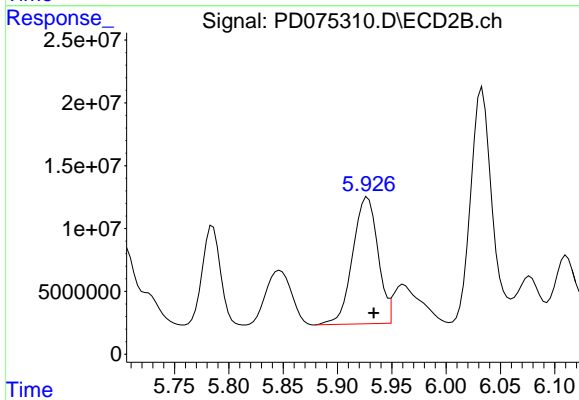
#14 Endrin

R.T.: 5.638 min  
 Delta R.T.: -0.002 min  
 Response: 117030000  
 Conc: 96.22 ng/ml



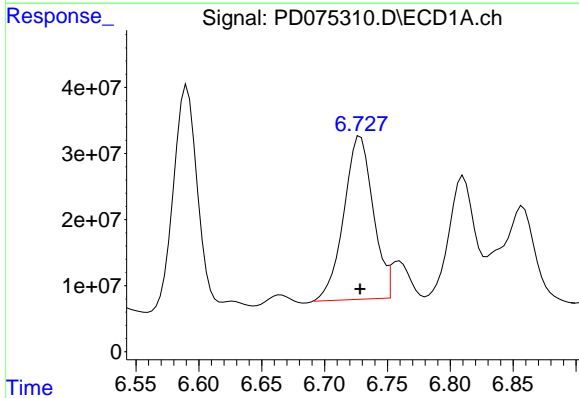
#15 Endosulfan II

R.T.: 6.811 min  
 Delta R.T.: -0.003 min  
 Response: 168895403  
 Conc: 52.45 ng/ml



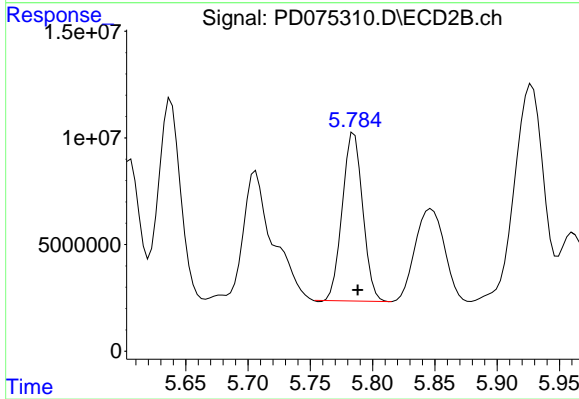
#15 Endosulfan II

R.T.: 5.928 min  
 Delta R.T.: -0.006 min  
 Response: 162893463  
 Conc: 127.31 ng/ml



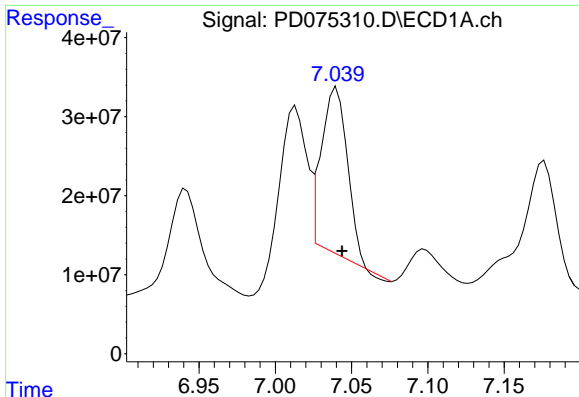
#16 4,4'-DDD

R.T.: 6.729 min  
 Delta R.T.: 0.000 min  
 Response: 399770055  
 Conc: 165.43 ng/ml



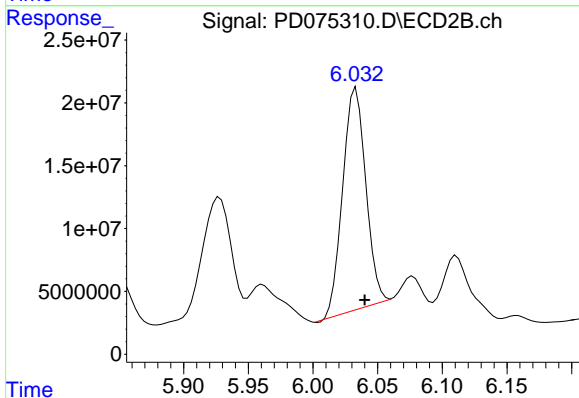
#16 4,4'-DDD

R.T.: 5.785 min  
 Delta R.T.: -0.003 min  
 Response: 90319755  
 Conc: 91.11 ng/ml



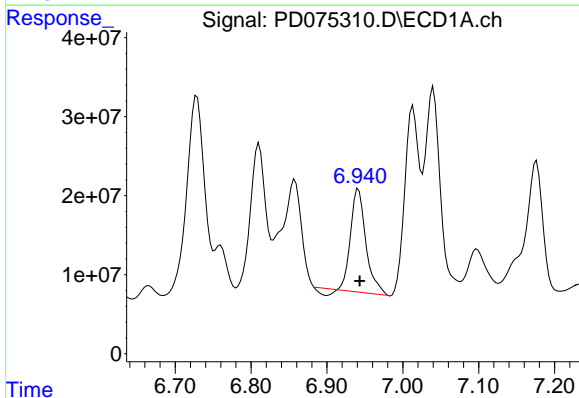
#17 4,4'-DDT

R.T.: 7.040 min  
Delta R.T.: -0.004 min  
Response: 248770732  
Conc: 98.01 ng/ml



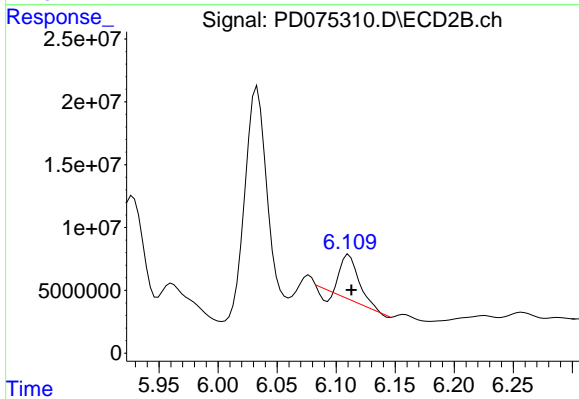
#17 4,4'-DDT

R.T.: 6.033 min  
Delta R.T.: -0.007 min  
Response: 217990085  
Conc: 216.29 ng/ml



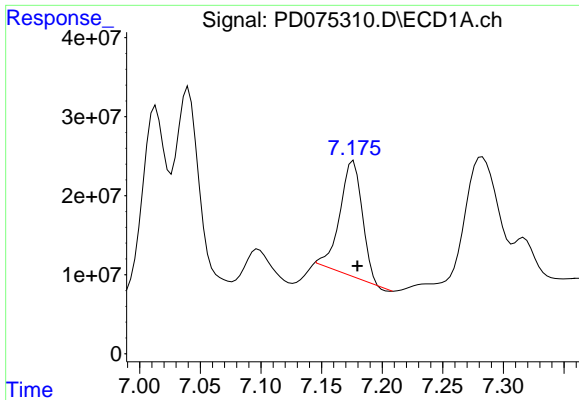
#18 Endrin aldehyde

R.T.: 6.942 min  
Delta R.T.: -0.002 min  
Response: 179059583  
Conc: 75.69 ng/ml

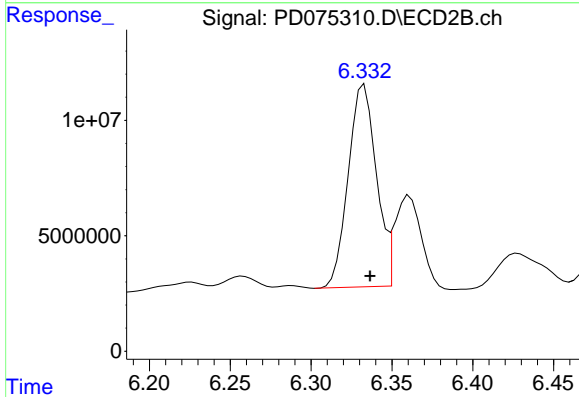


#18 Endrin aldehyde

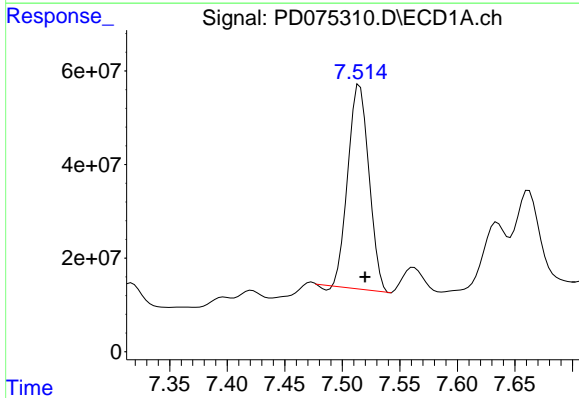
R.T.: 6.111 min  
Delta R.T.: -0.002 min  
Response: 37109596  
Conc: 36.54 ng/ml



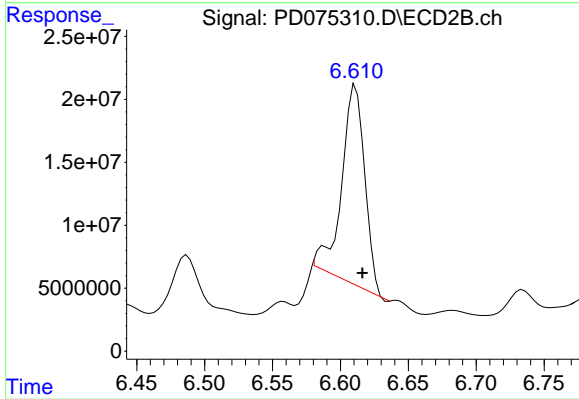
#19 Endosulfan Sulfate  
R.T.: 7.176 min  
Delta R.T.: -0.003 min  
Response: 187014676  
Conc: 67.99 ng/ml



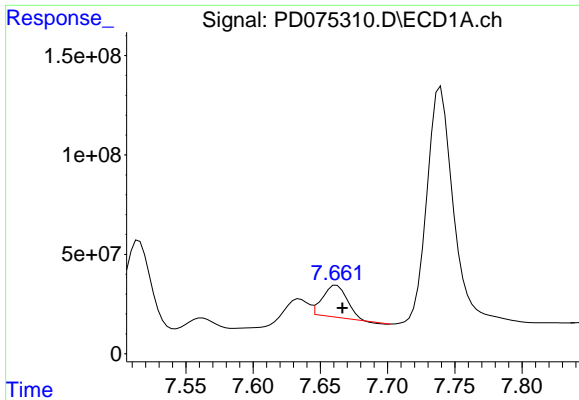
#19 Endosulfan Sulfate  
R.T.: 6.333 min  
Delta R.T.: -0.004 min  
Response: 105769915  
Conc: 90.94 ng/ml



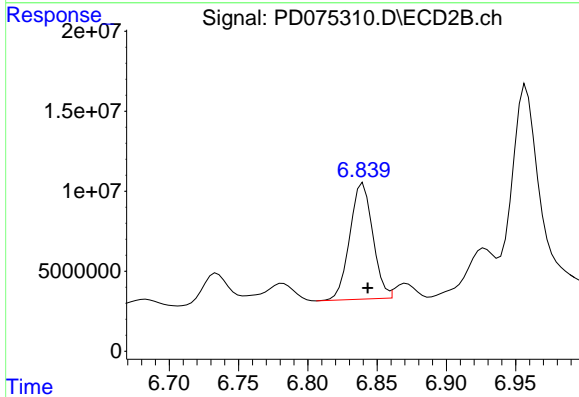
#20 Methoxychlor  
R.T.: 7.515 min  
Delta R.T.: -0.005 min  
Response: 558010706  
Conc: 379.88 ng/ml



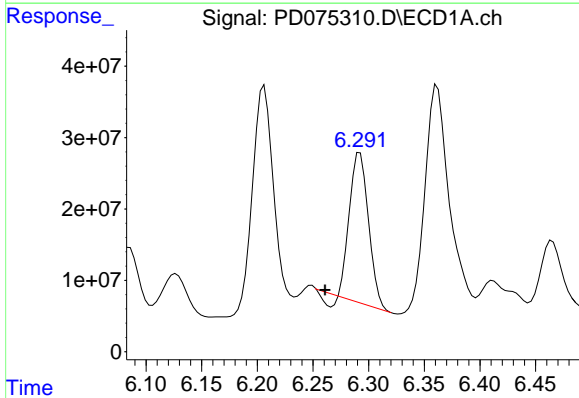
#20 Methoxychlor  
R.T.: 6.611 min  
Delta R.T.: -0.005 min  
Response: 188760642  
Conc: 329.55 ng/ml



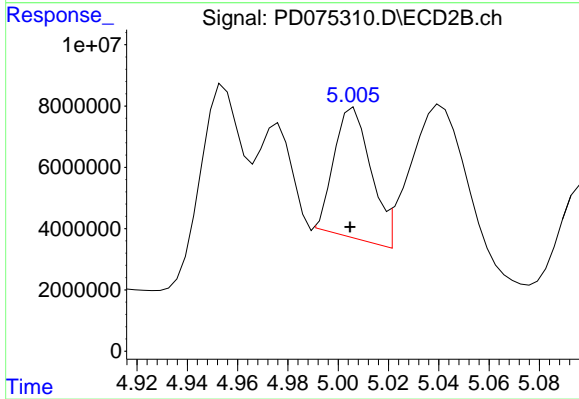
#21 Endrin ketone  
 R.T.: 7.662 min  
 Delta R.T.: -0.004 min  
 Response: 195486325  
 Conc: 64.49 ng/ml



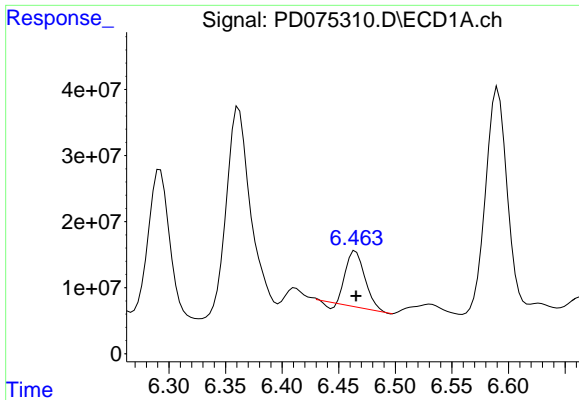
#21 Endrin ketone  
 R.T.: 6.840 min  
 Delta R.T.: -0.003 min  
 Response: 83629965  
 Conc: 63.42 ng/ml



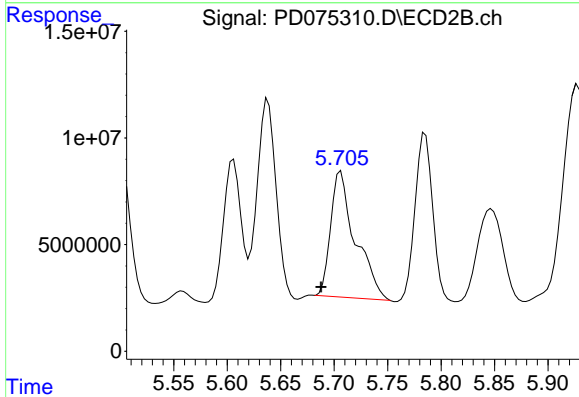
#22 Toxaphene-1  
 R.T.: 6.292 min  
 Delta R.T.: 0.031 min  
 Response: 238737963  
 Conc: 10377.21 ng/ml



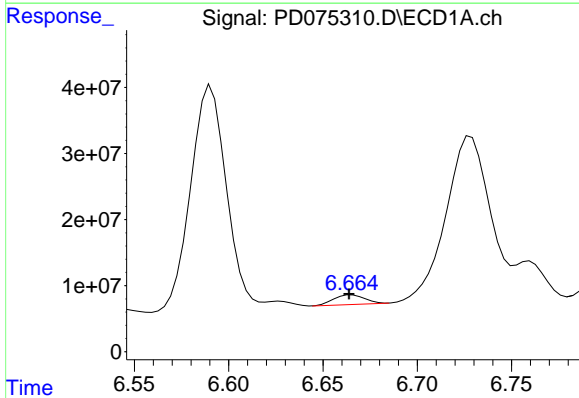
#22 Toxaphene-1  
 R.T.: 5.006 min  
 Delta R.T.: 0.002 min  
 Response: 43191081  
 Conc: 6253.48 ng/ml



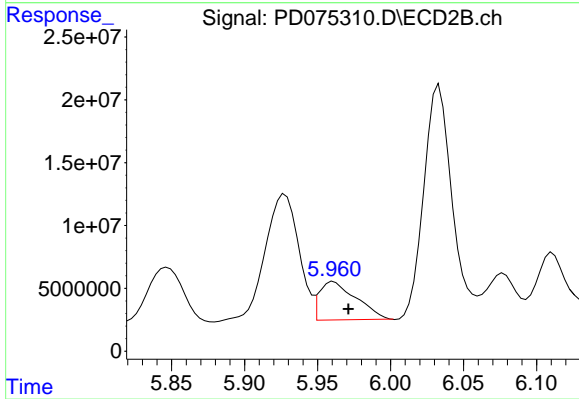
#23 Toxaphene-2  
 R.T.: 6.465 min  
 Delta R.T.: 0.000 min  
 Response: 99023313  
 Conc: 3318.58 ng/ml



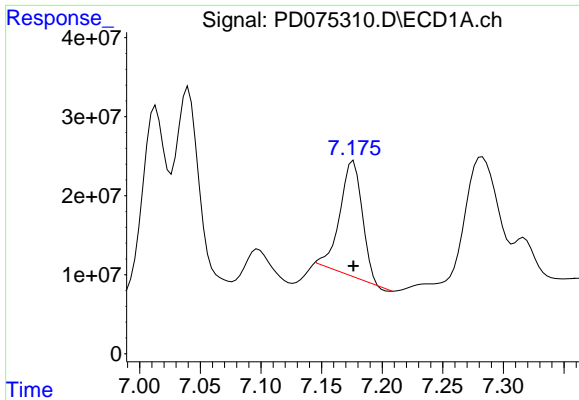
#23 Toxaphene-2  
 R.T.: 5.706 min  
 Delta R.T.: 0.018 min  
 Response: 94581394  
 Conc: 11845.20 ng/ml



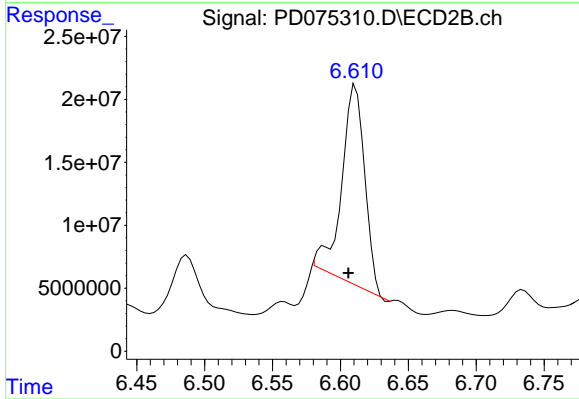
#24 Toxaphene-3  
 R.T.: 6.665 min  
 Delta R.T.: 0.001 min  
 Response: 16628031  
 Conc: 788.29 ng/ml



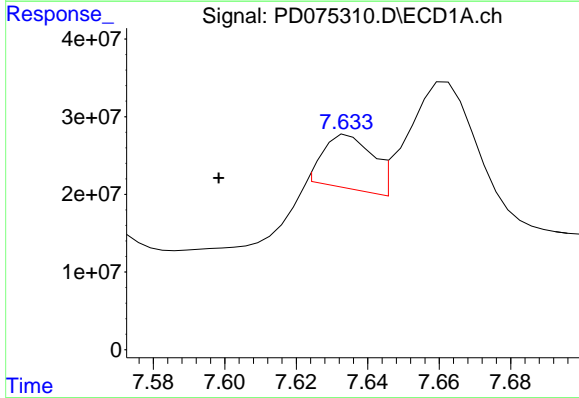
#24 Toxaphene-3  
 R.T.: 5.961 min  
 Delta R.T.: -0.010 min  
 Response: 52070054  
 Conc: 5943.14 ng/ml



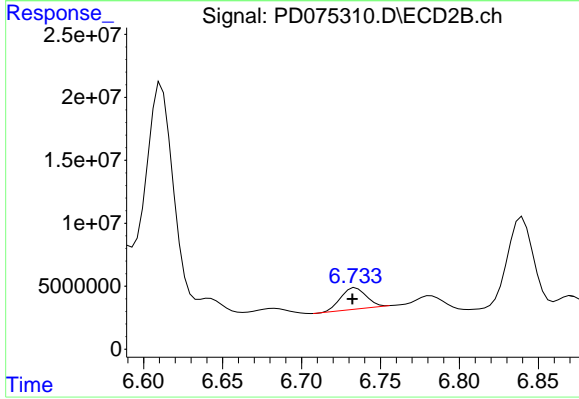
#25 Toxaphene-4  
R.T.: 7.176 min  
Delta R.T.: 0.000 min  
Response: 187014676  
Conc: 2868.68 ng/ml



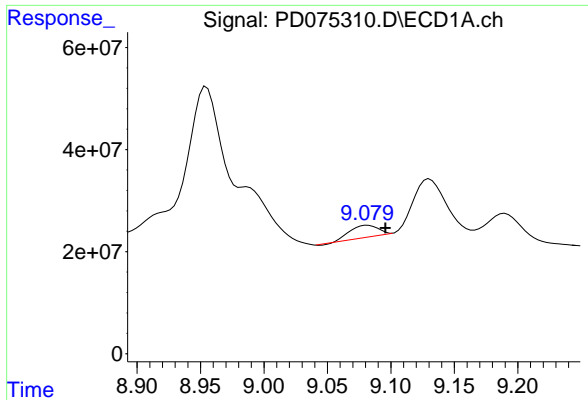
#25 Toxaphene-4  
R.T.: 6.611 min  
Delta R.T.: 0.006 min  
Response: 188760642  
Conc: 7455.67 ng/ml



#26 Toxaphene-5  
R.T.: 7.635 min  
Delta R.T.: 0.036 min  
Response: 64981245  
Conc: 1369.74 ng/ml

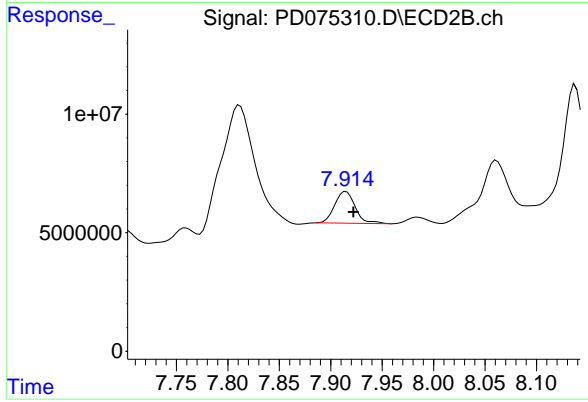


#26 Toxaphene-5  
R.T.: 6.734 min  
Delta R.T.: 0.002 min  
Response: 18892753  
Conc: 520.20 ng/ml



#27 Decachlorobiphenyl

R.T.: 9.082 min  
Delta R.T.: -0.014 min  
Response: 34840088  
Conc: 14.08 ng/ml



#27 Decachlorobiphenyl

R.T.: 7.915 min  
Delta R.T.: -0.007 min  
Response: 18424596  
Conc: 19.51 ng/ml