

Data Path : Z:\pestpcbsrv\HPCHEM1\ECD_D\Data\PD050523\
 Data File : PD075301.D
 Signal(s) : Signal #1: ECD1A.ch Signal #2: ECD2B.ch
 Acq On : 06 May 2023 01:37
 Operator : AR\AJ
 Sample : 02589-14
 Misc :
 ALS Vial : 39 Sample Multiplier: 1

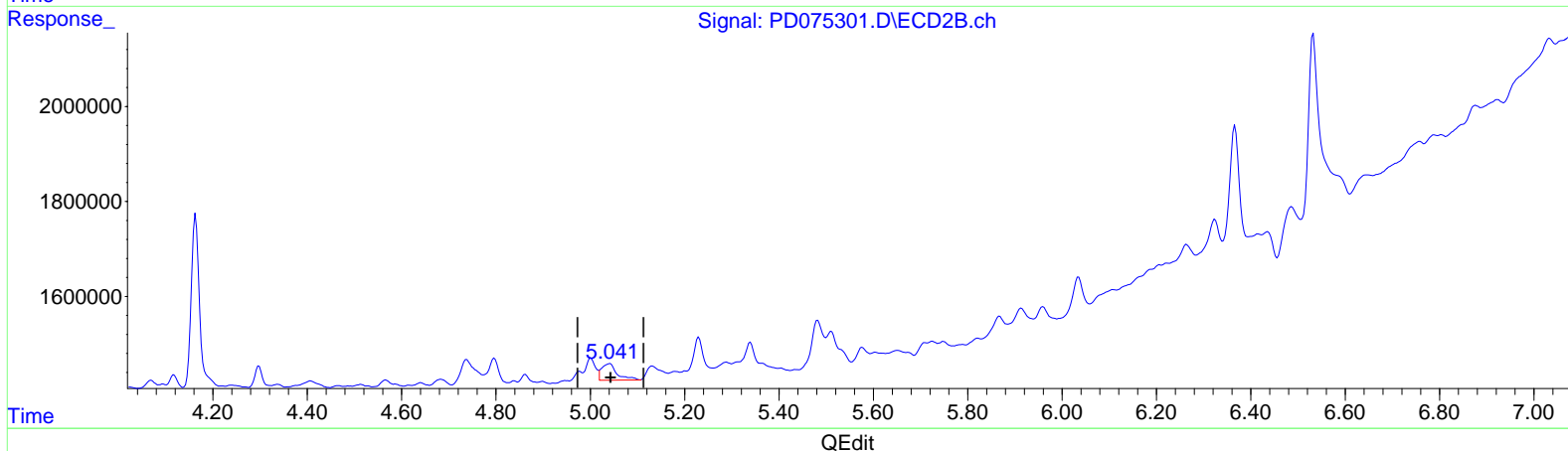
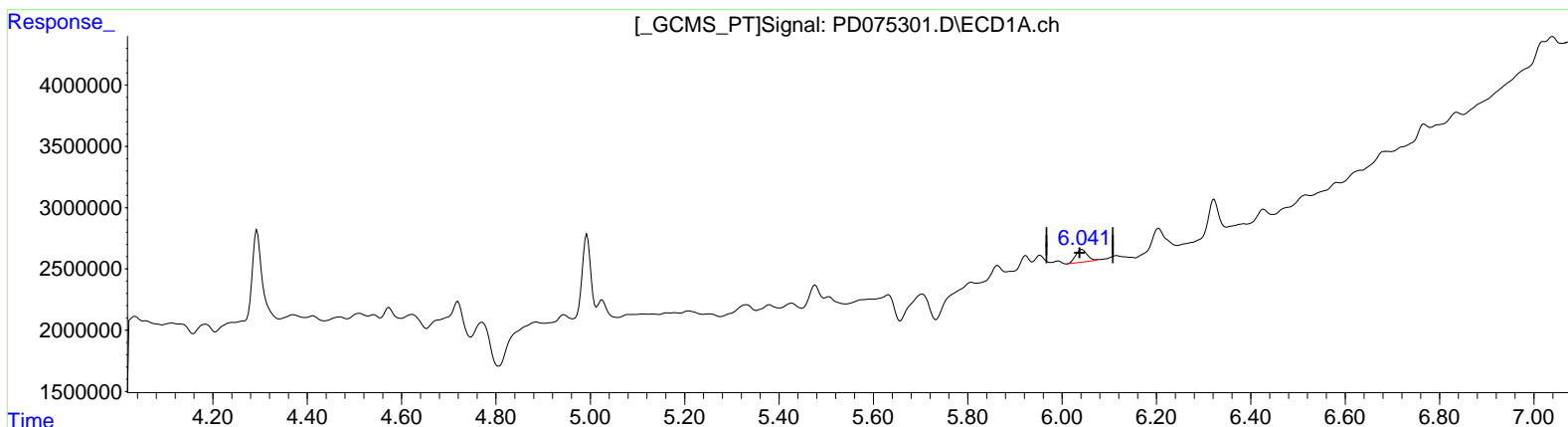
Instrument :
 ECD_D
 ClientSampleId :
 JRED0

Manual Integrations APPROVED

Reviewed By : Abdul Mirza 05/06/2023
 Supervised By : Ankita Jodhani 05/08/2023

Integration File signal 1: autoint1.e
 Integration File signal 2: autoint2.e
 Quant Time: May 06 06:08:56 2023
 Quant Method : Z:\pestpcbsrv\HPCHEM1\ECD_D\Method\PD050323CLP.M
 Quant Title : GC Extractables
 QLast Update : Thu May 04 02:14:07 2023
 Response via : Initial Calibration
 Integrator: ChemStation

Volume Inj. : 1 µl
 Signal #1 Phase : ZB-MR1 Signal #2 Phase: ZB-MR2
 Signal #1 Info : 30M x 0.32mm x 0.5 Signal #2 Info : 30M x 0.32mm x 0.25µm



(11) cis-Chlordane (B)
 6.043min 0.511 ng/ml
 response 1741059

(11) cis-Chlordane #2 (B)
 5.042min 0.572 ng/ml
 response 797933

Data Path : Z:\pestpcbsrv\HPCHEM1\ECD_D\Data\PD050523\
 Data File : PD075301.D
 Signal(s) : Signal #1: ECD1A.ch Signal #2: ECD2B.ch
 Acq On : 06 May 2023 01:37
 Operator : AR\AJ
 Sample : 02589-14
 Misc :
 ALS Vial : 39 Sample Multiplier: 1

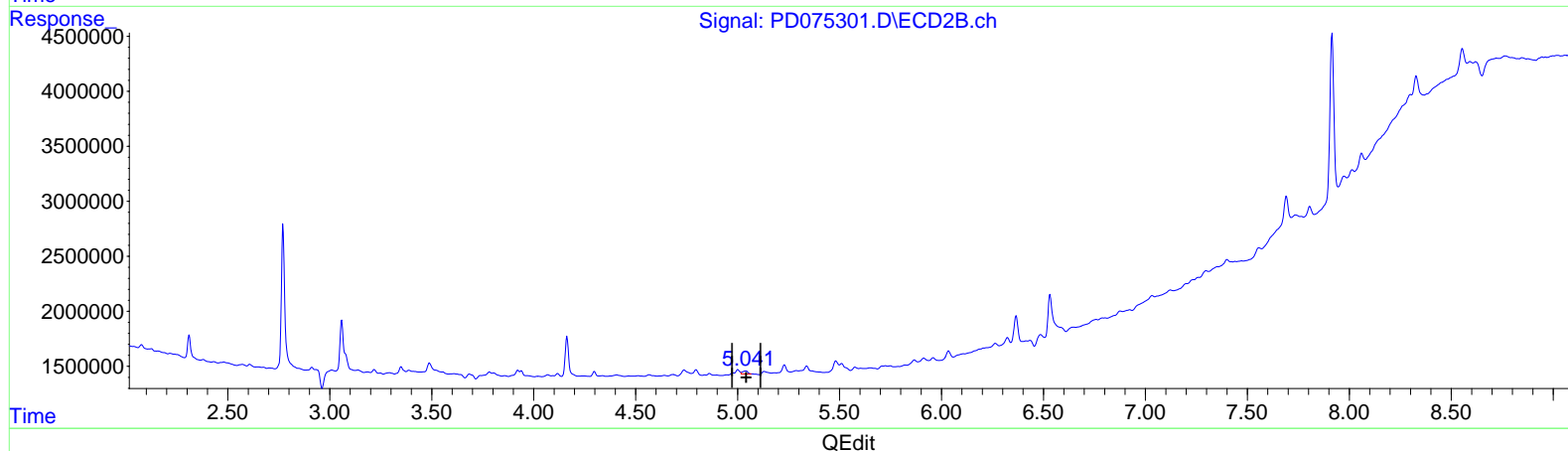
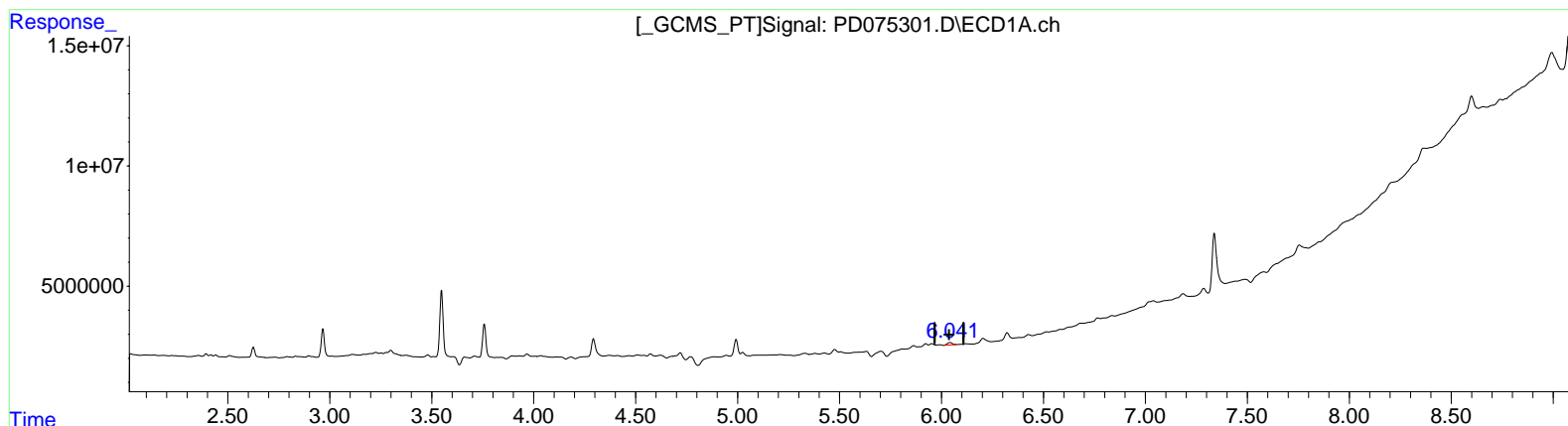
Instrument :
 ECD_D
 ClientSampleId :
 JRED0

Manual Integrations APPROVED

Reviewed By : Abdul Mirza 05/06/2023
 Supervised By : Ankita Jodhani 05/08/2023

Integration File signal 1: autoint1.e
 Integration File signal 2: autoint2.e
 Quant Time: May 06 06:08:56 2023
 Quant Method : Z:\pestpcbsrv\HPCHEM1\ECD_D\Method\PD050323CLP.M
 Quant Title : GC Extractables
 QLast Update : Thu May 04 02:14:07 2023
 Response via : Initial Calibration
 Integrator: ChemStation

Volume Inj. : 1 µl
 Signal #1 Phase : ZB-MR1 Signal #2 Phase: ZB-MR2
 Signal #1 Info : 30M x 0.32mm x 0.5 Signal #2 Info : 30M x 0.32mm x 0.25µm



(11) cis-Chlordane (B)
 6.043min 0.511 ng/ml
 response 1741059

(11) cis-Chlordane #2 (B)
 5.041min 0.336 ng/ml m
 response 468271