

Data Path : Z:\pestpcbsrv\HPCHEM1\ECD\_D\Data\PD050621\  
 Data File : PD062735.D  
 Signal(s) : Signal #1: ECD1A.ch Signal #2: ECD2B.ch  
 Acq On : 05 May 2021 19:38  
 Operator : AR\AJ  
 Sample : PSTDICV050  
 Misc :  
 ALS Vial : 20 Sample Multiplier: 1

Instrument :  
 ECD\_D  
 ClientSampleId :  
 ICVPD050621

Integration File signal 1: autoint1.e  
 Integration File signal 2: autoint2.e  
 Quant Time: May 06 08:52:11 2021  
 Quant Method : Z:\pestpcbsrv\HPCHEM1\ECD\_D\Method\PD050621.M  
 Quant Title : GC Extractables  
 QLast Update : Thu May 06 08:49:38 2021  
 Response via : Initial Calibration  
 Integrator: ChemStation

Volume Inj. : 2 µl  
 Signal #1 Phase : ZB-MR2 Signal #2 Phase: ZB-MR1  
 Signal #1 Info : 30M x 0.32mm x0.2 Signal #2 Info : 30M x 0.32mm x 0.50µm

	Compound	RT#1	RT#2	Resp#1	Resp#2	ng/ml	ng/ml
-----							
System Monitoring Compounds							
1)	SA Tetrachlo...	3.442	3.971	44893678	584.6E6	50.487	50.497
28)	SA Decachlor...	8.202	9.031	53927449	586.7E6	50.937	50.842
Target Compounds							
2)	A alpha-BHC	3.878	4.360	71502007	963.2E6	51.418	50.032
3)	MA gamma-BHC...	4.162	4.645	66297781	871.9E6	50.736	50.447
4)	MA Heptachlor	4.463	5.153	64774909	876.3E6	51.022	49.926
5)	MB Aldrin	4.712	5.457	61661866	840.5E6	51.214	50.254
6)	B beta-BHC	4.413	4.815	30036682	380.0E6	50.135	49.826
7)	B delta-BHC	4.617	5.032	69618338	898.4E6	51.632	49.769
8)	Heptachlo...	5.155	5.844	58690376	779.4E6	50.723	48.788
9)	A Endosulfan I	5.494	6.200	55669514	738.4E6	50.818	50.026
10)	B gamma-Chl...	5.382	6.078	59792472	801.4E6	50.800	50.370
11)	B alpha-Chl...	5.440	6.150	58699526	766.5E6	50.683	50.212
12)	B 4,4'-DDE	5.604	6.308	58496055	791.0E6	50.870	49.942
13)	MA Dieldrin	5.738	6.457	61417549	803.9E6	51.143	49.757
14)	MA Endrin	5.995	6.675	54798167	682.2E6	49.306	48.524
15)	B Endosulfa...	6.269	6.884	53007442	668.5E6	50.882	50.038
16)	A 4,4'-DDD	6.121	6.797	49446572	653.1E6	51.927	50.540
17)	MA 4,4'-DDT	6.362	7.096	50622408	648.6E6	52.728	50.915
18)	B Endrin al...	6.437	7.008	46977733	584.9E6	50.358	50.130
19)	B Endosulfa...	6.651	7.231	54224224	700.5E6	51.787	50.368
20)	A Methoxychlor	6.910	7.555	30297391	333.6E6	51.467	49.977
21)	B Endrin ke...	7.143	7.702	65229651	692.7E6	52.323	51.046
22)	Mirex	7.332	8.156	47743950	457.2E6	52.152	49.912
24)	Chlordane-2	0.000	5.457f	0	840.5E6	N.D.	1574.296 #
25)	Chlordane-3	5.382	6.078	59792472	801.4E6	504.598	358.600 #
26)	Chlordane-4	5.440	6.150	58699526	766.5E6	605.306	297.193 #
27)	Chlordane-5	6.269	0.000	53007442	0	1215.969	N.D. #

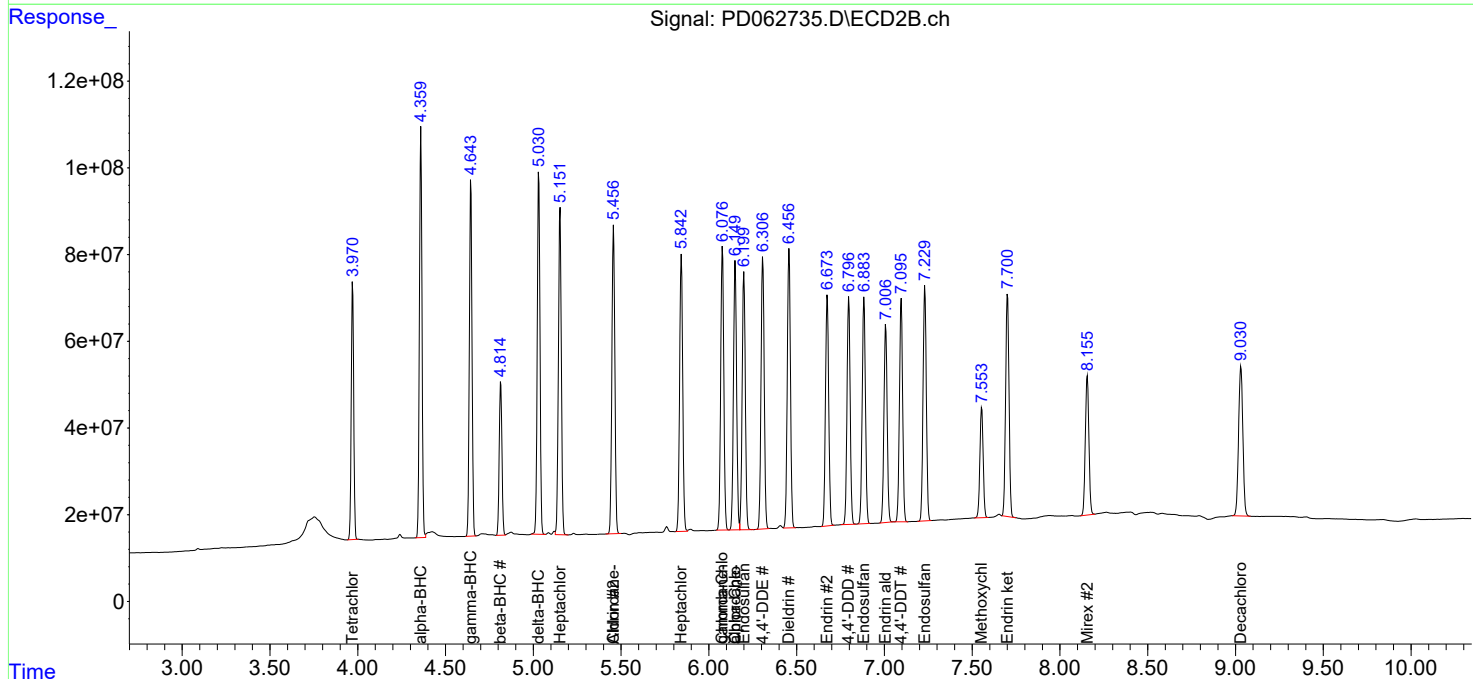
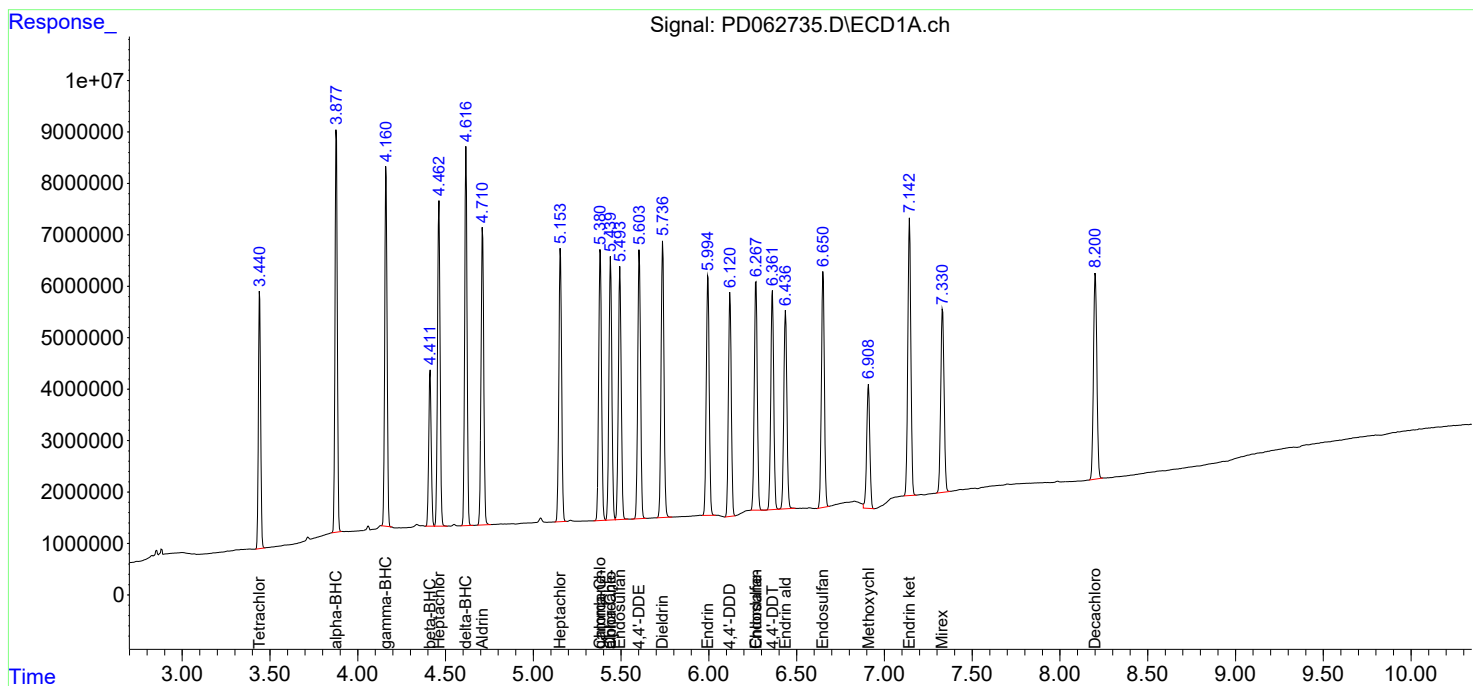
(f)=RT Delta > 1/2 Window (#)=Amounts differ by > 25% (m)=manual int.

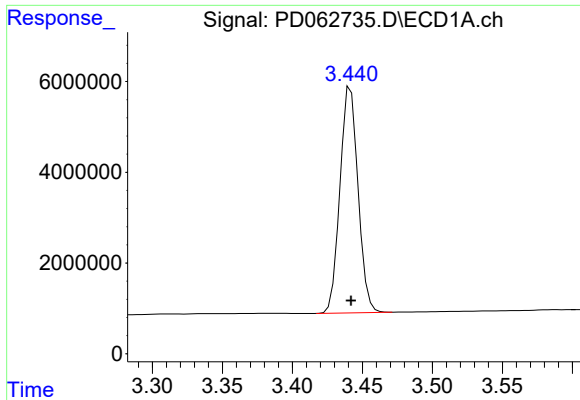
Data Path : Z:\pestpcbsrv\HPCHEM1\ECD\_D\Data\PD050621\  
 Data File : PD062735.D  
 Signal(s) : Signal #1: ECD1A.ch Signal #2: ECD2B.ch  
 Acq On : 05 May 2021 19:38  
 Operator : AR\AJ  
 Sample : PSTDICV050  
 Misc :  
 ALS Vial : 20 Sample Multiplier: 1

Instrument :  
 ECD\_D  
 Client Sampled :  
 ICVPD050621

Integration File signal 1: autoint1.e  
 Integration File signal 2: autoint2.e  
 Quant Time: May 06 08:52:11 2021  
 Quant Method : Z:\pestpcbsrv\HPCHEM1\ECD\_D\Method\PD050621.M  
 Quant Title : GC Extractables  
 QLast Update : Thu May 06 08:49:38 2021  
 Response via : Initial Calibration  
 Integrator: ChemStation

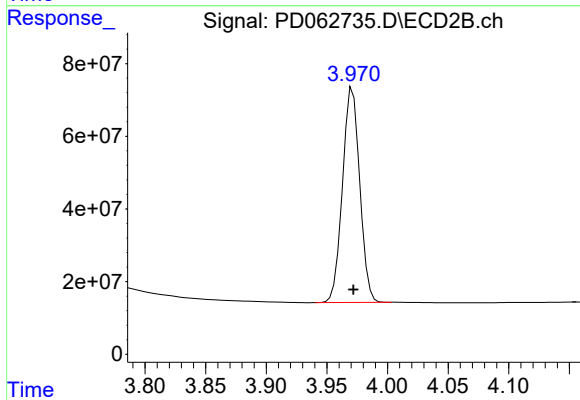
Volume Inj. : 2 µl  
 Signal #1 Phase : ZB-MR2 Signal #2 Phase: ZB-MR1  
 Signal #1 Info : 30M x 0.32mm x0.2 Signal #2 Info : 30M x 0.32mm x 0.50µm



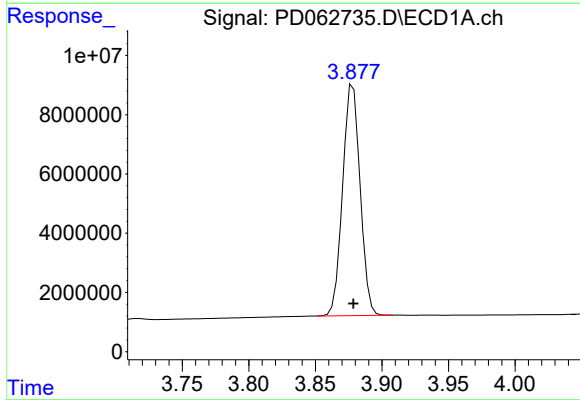


#1 Tetrachloro-m-xylene  
 R.T.: 3.442 min  
 Delta R.T.: 0.000 min  
 Response: 44893678  
 Conc: 50.49 ng/ml

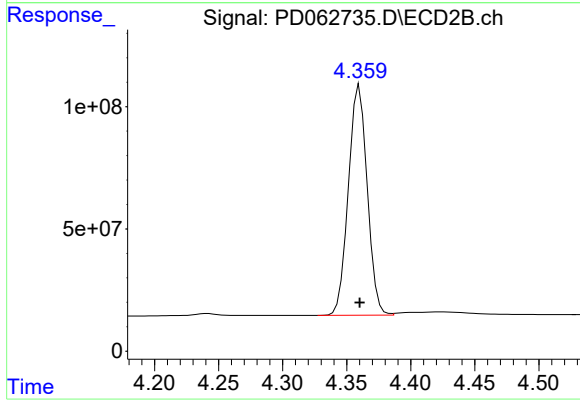
Instrument :  
 ECD\_D  
 ClientSampleId :  
 ICVPD050621



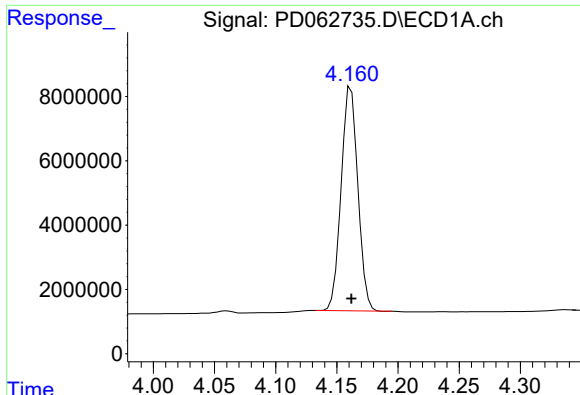
#1 Tetrachloro-m-xylene  
 R.T.: 3.971 min  
 Delta R.T.: 0.000 min  
 Response: 584606350  
 Conc: 50.50 ng/ml



#2 alpha-BHC  
 R.T.: 3.878 min  
 Delta R.T.: 0.000 min  
 Response: 71502007  
 Conc: 51.42 ng/ml

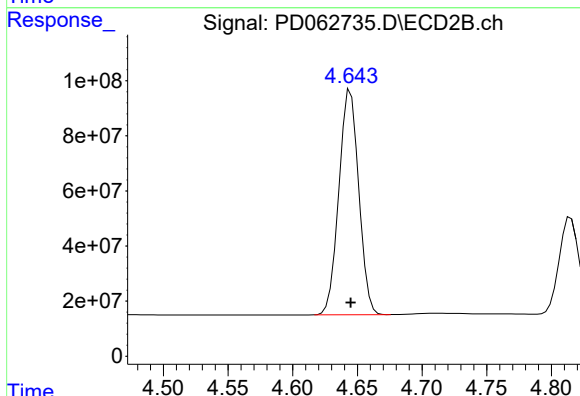


#2 alpha-BHC  
 R.T.: 4.360 min  
 Delta R.T.: 0.000 min  
 Response: 963222902  
 Conc: 50.03 ng/ml

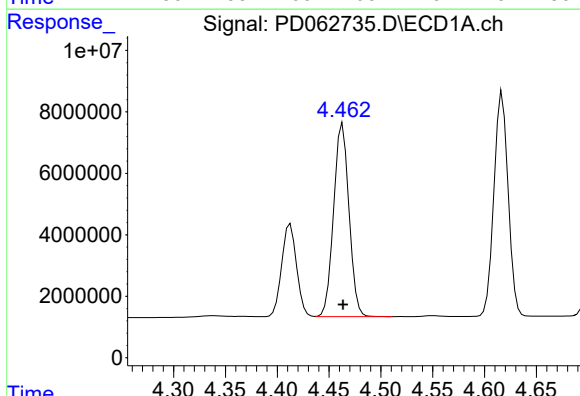


#3 gamma-BHC (Lindane)  
 R.T.: 4.162 min  
 Delta R.T.: 0.000 min  
 Response: 66297781  
 Conc: 50.74 ng/ml

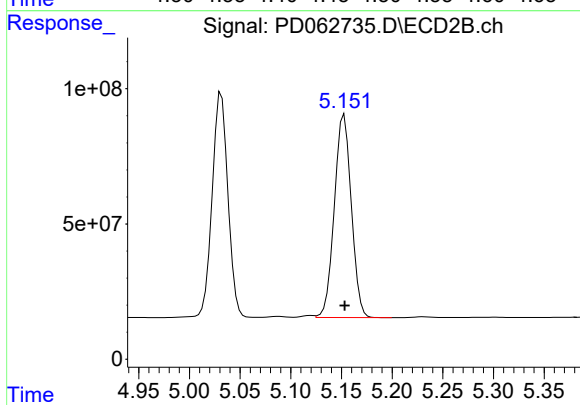
Instrument :  
 ECD\_D  
 ClientSampled :  
 ICVPD050621



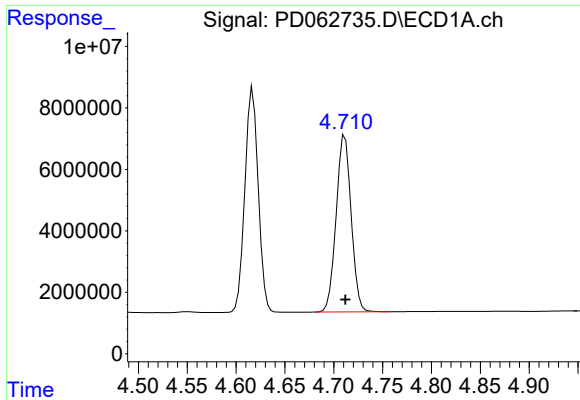
#3 gamma-BHC (Lindane)  
 R.T.: 4.645 min  
 Delta R.T.: 0.000 min  
 Response: 871941669  
 Conc: 50.45 ng/ml



#4 Heptachlor  
 R.T.: 4.463 min  
 Delta R.T.: 0.000 min  
 Response: 64774909  
 Conc: 51.02 ng/ml

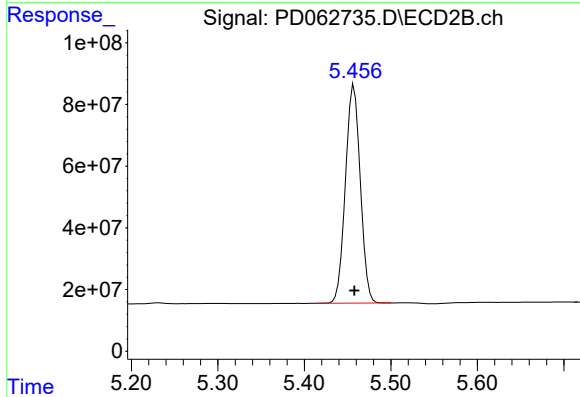


#4 Heptachlor  
 R.T.: 5.153 min  
 Delta R.T.: 0.000 min  
 Response: 876297838  
 Conc: 49.93 ng/ml

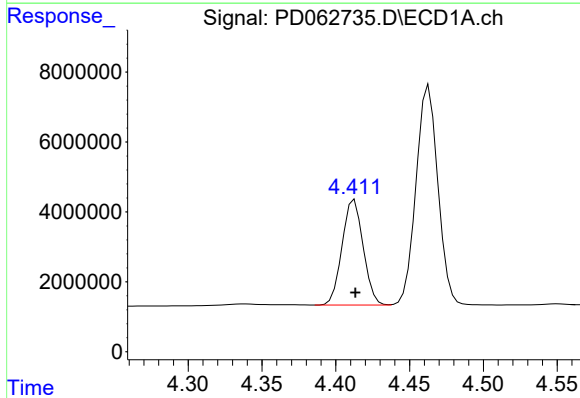


#5 Aldrin  
 R.T.: 4.712 min  
 Delta R.T.: 0.000 min  
 Response: 61661866  
 Conc: 51.21 ng/ml

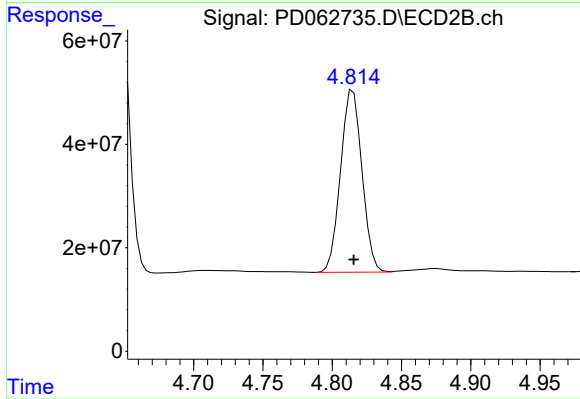
**Instrument :**  
 ECD\_D  
**ClientSampled :**  
 ICVPD050621



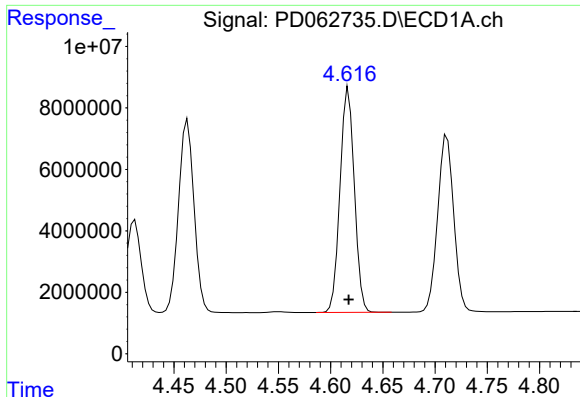
#5 Aldrin  
 R.T.: 5.457 min  
 Delta R.T.: 0.000 min  
 Response: 840468451  
 Conc: 50.25 ng/ml



#6 beta-BHC  
 R.T.: 4.413 min  
 Delta R.T.: 0.000 min  
 Response: 30036682  
 Conc: 50.13 ng/ml



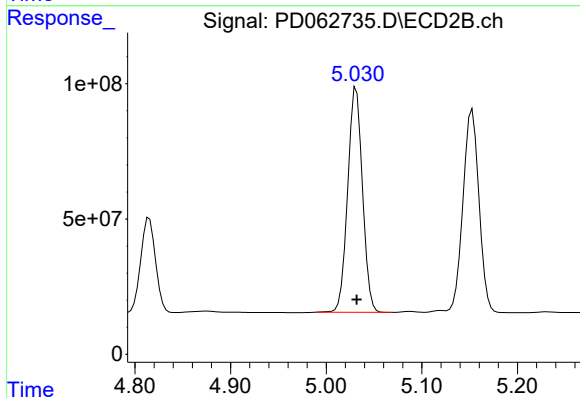
#6 beta-BHC  
 R.T.: 4.815 min  
 Delta R.T.: 0.000 min  
 Response: 379988892  
 Conc: 49.83 ng/ml



#7 delta-BHC

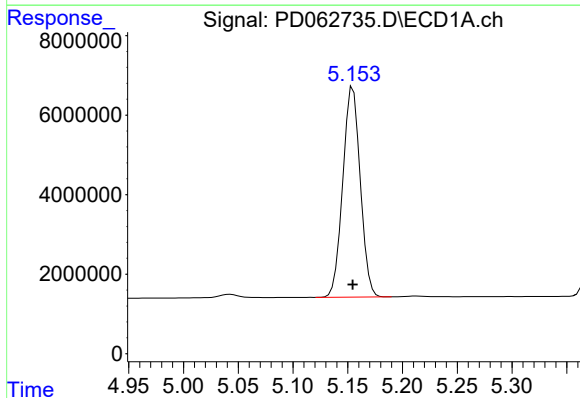
R.T.: 4.617 min  
Delta R.T.: 0.000 min  
Response: 69618338  
Conc: 51.63 ng/ml

Instrument :  
ECD\_D  
ClientSampleId :  
ICVPD050621



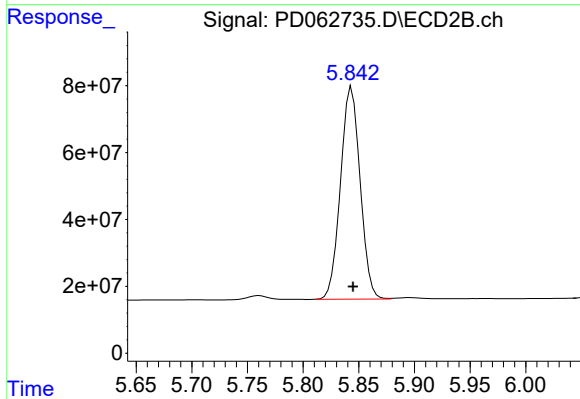
#7 delta-BHC

R.T.: 5.032 min  
Delta R.T.: 0.000 min  
Response: 898379076  
Conc: 49.77 ng/ml



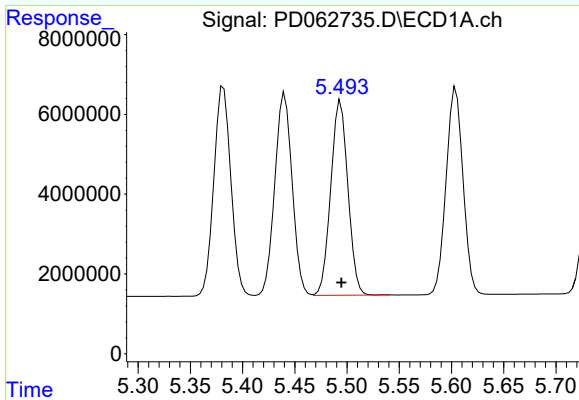
#8 Heptachlor epoxide

R.T.: 5.155 min  
Delta R.T.: 0.000 min  
Response: 58690376  
Conc: 50.72 ng/ml



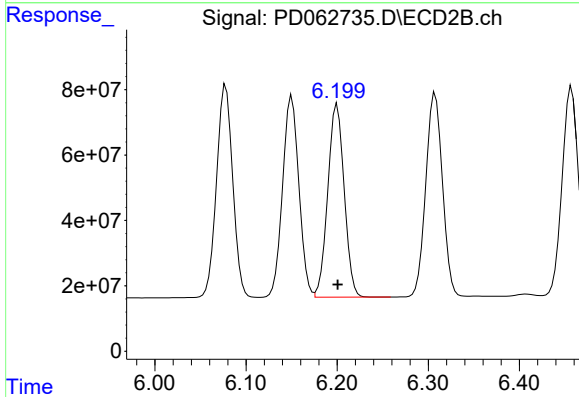
#8 Heptachlor epoxide

R.T.: 5.844 min  
Delta R.T.: -0.001 min  
Response: 779352873  
Conc: 48.79 ng/ml

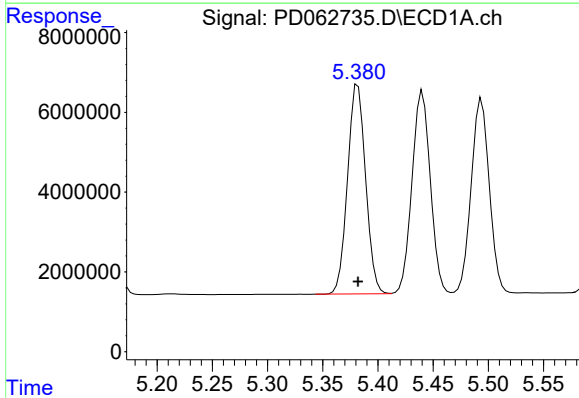


#9 Endosulfan I  
 R.T.: 5.494 min  
 Delta R.T.: 0.000 min  
 Response: 55669514  
 Conc: 50.82 ng/ml

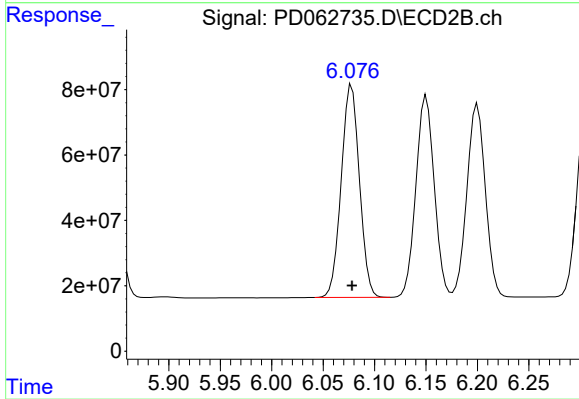
Instrument :  
 ECD\_D  
 ClientSampled :  
 ICPD050621



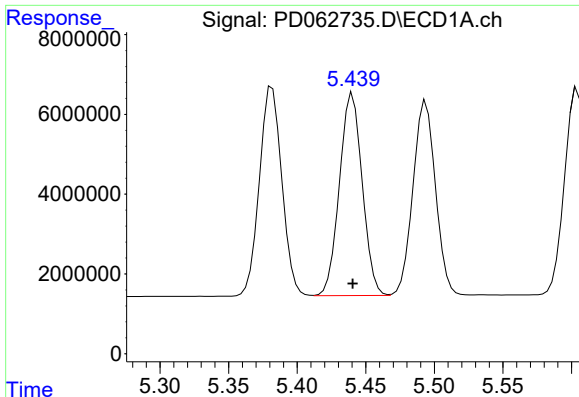
#9 Endosulfan I  
 R.T.: 6.200 min  
 Delta R.T.: 0.000 min  
 Response: 738401313  
 Conc: 50.03 ng/ml



#10 gamma-Chlordane  
 R.T.: 5.382 min  
 Delta R.T.: 0.000 min  
 Response: 59792472  
 Conc: 50.80 ng/ml



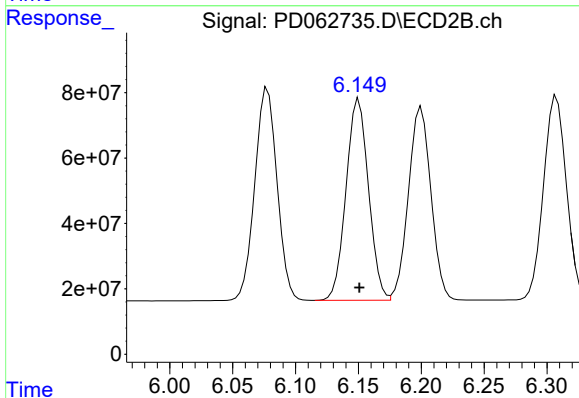
#10 gamma-Chlordane  
 R.T.: 6.078 min  
 Delta R.T.: 0.000 min  
 Response: 801438799  
 Conc: 50.37 ng/ml



#11 alpha-Chlordane

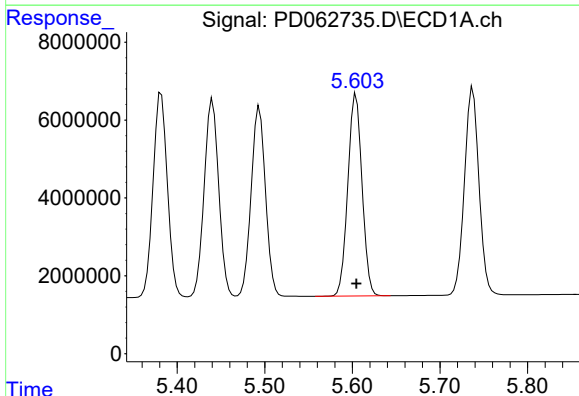
R.T.: 5.440 min  
Delta R.T.: 0.000 min  
Response: 58699526  
Conc: 50.68 ng/ml

Instrument :  
ECD\_D  
ClientSampleId :  
ICVPD050621



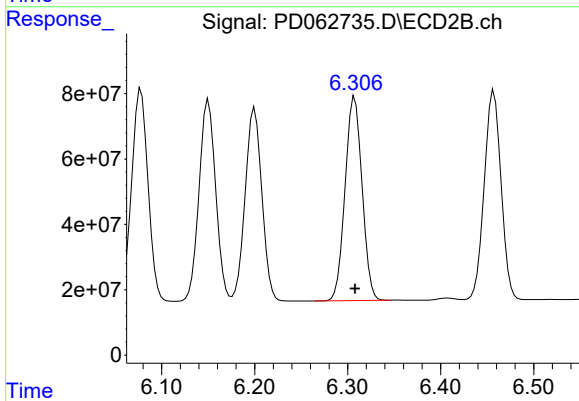
#11 alpha-Chlordane

R.T.: 6.150 min  
Delta R.T.: 0.000 min  
Response: 766548392  
Conc: 50.21 ng/ml



#12 4,4'-DDE

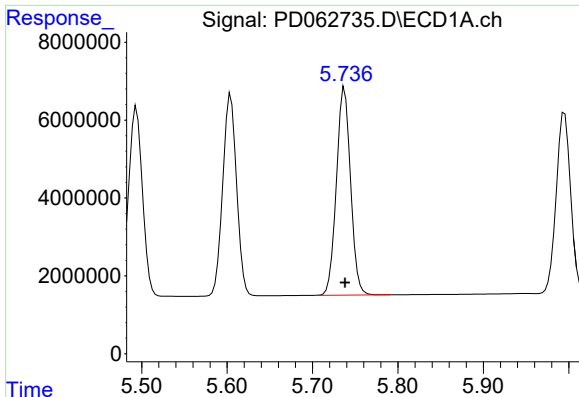
R.T.: 5.604 min  
Delta R.T.: 0.000 min  
Response: 58496055  
Conc: 50.87 ng/ml



#12 4,4'-DDE

R.T.: 6.308 min  
Delta R.T.: 0.000 min  
Response: 790982255  
Conc: 49.94 ng/ml

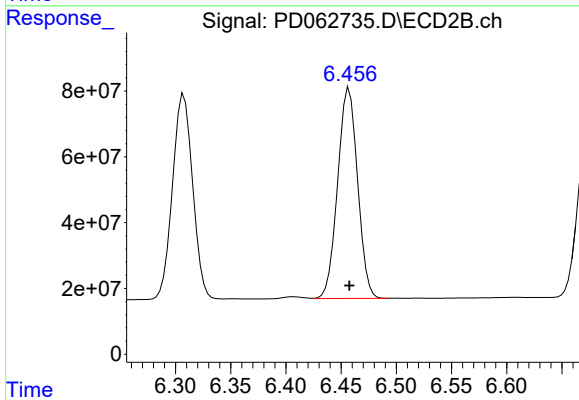




#13 Dieldrin

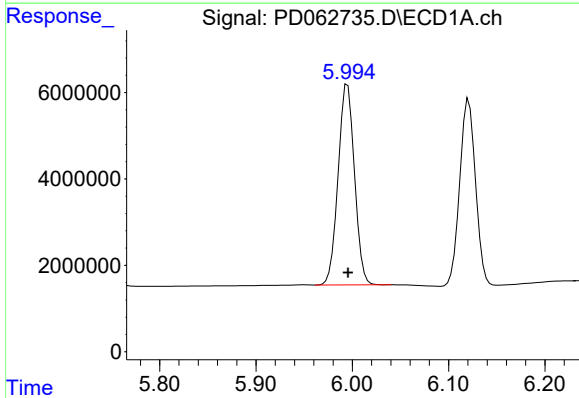
R.T.: 5.738 min  
 Delta R.T.: 0.000 min  
 Response: 61417549  
 Conc: 51.14 ng/ml

Instrument :  
 ECD\_D  
 ClientSampleId :  
 ICVPD050621



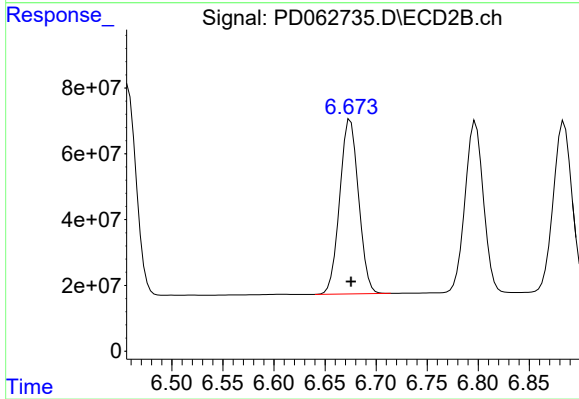
#13 Dieldrin

R.T.: 6.457 min  
 Delta R.T.: 0.000 min  
 Response: 803940835  
 Conc: 49.76 ng/ml



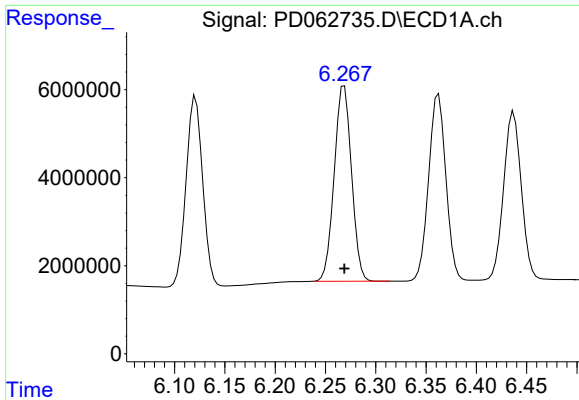
#14 Endrin

R.T.: 5.995 min  
 Delta R.T.: 0.000 min  
 Response: 54798167  
 Conc: 49.31 ng/ml



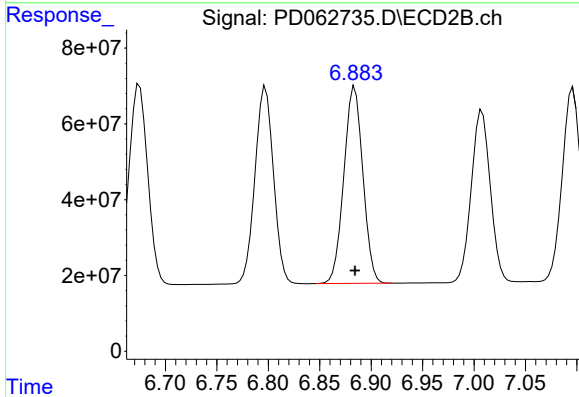
#14 Endrin

R.T.: 6.675 min  
 Delta R.T.: 0.000 min  
 Response: 682217357  
 Conc: 48.52 ng/ml

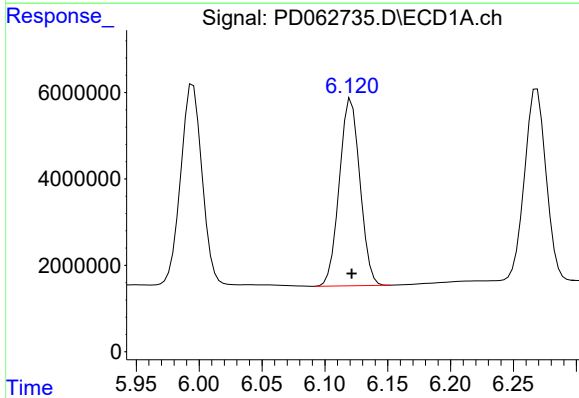


#15 Endosulfan II  
 R.T.: 6.269 min  
 Delta R.T.: 0.000 min  
 Response: 53007442  
 Conc: 50.88 ng/ml

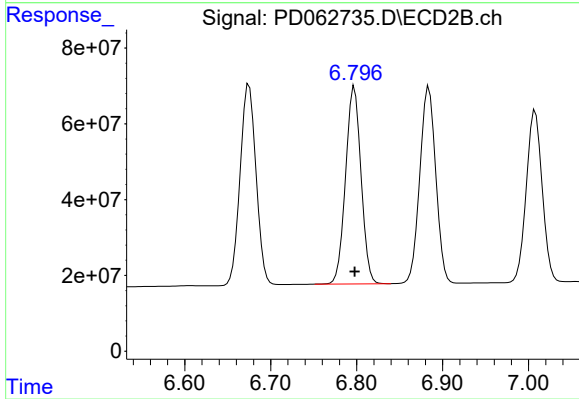
**Instrument :**  
 ECD\_D  
**ClientSampled :**  
 ICVPD050621



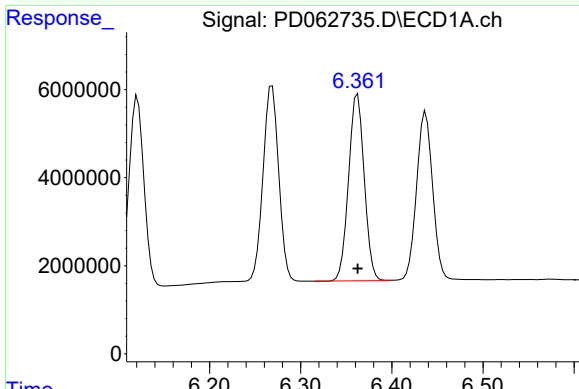
#15 Endosulfan II  
 R.T.: 6.884 min  
 Delta R.T.: 0.000 min  
 Response: 668454010  
 Conc: 50.04 ng/ml



#16 4,4'-DDD  
 R.T.: 6.121 min  
 Delta R.T.: 0.000 min  
 Response: 49446572  
 Conc: 51.93 ng/ml



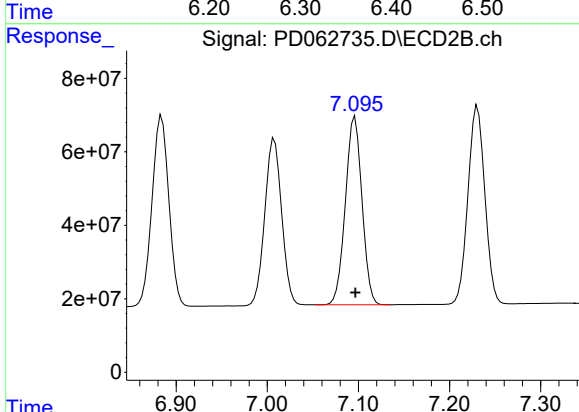
#16 4,4'-DDD  
 R.T.: 6.797 min  
 Delta R.T.: 0.000 min  
 Response: 653060055  
 Conc: 50.54 ng/ml



#17 4,4'-DDT

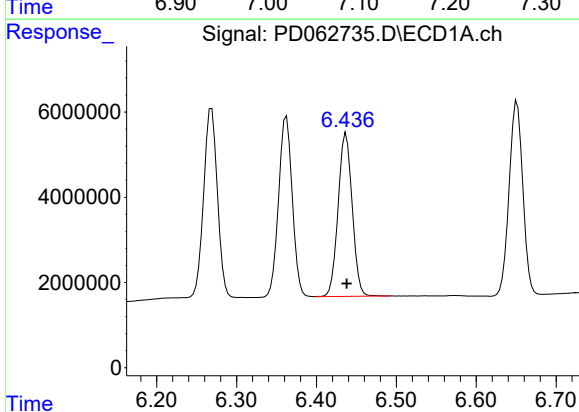
R.T.: 6.362 min  
 Delta R.T.: 0.000 min  
 Response: 50622408  
 Conc: 52.73 ng/ml

Instrument :  
 ECD\_D  
 ClientSampleId :  
 ICVPD050621



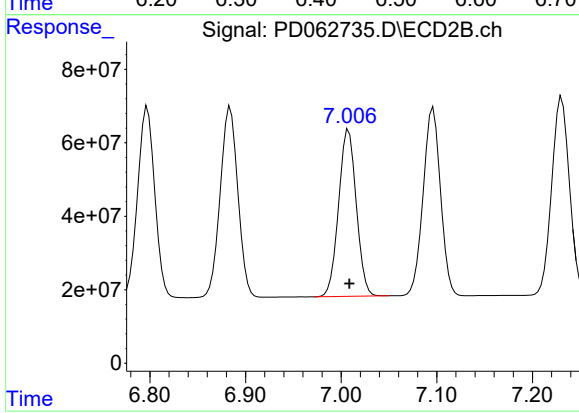
#17 4,4'-DDT

R.T.: 7.096 min  
 Delta R.T.: 0.000 min  
 Response: 648562030  
 Conc: 50.91 ng/ml



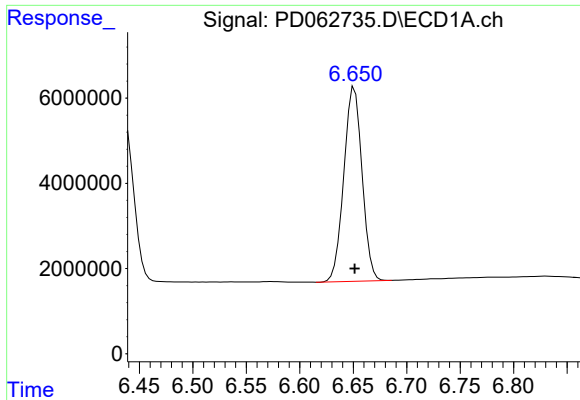
#18 Endrin aldehyde

R.T.: 6.437 min  
 Delta R.T.: 0.000 min  
 Response: 46977733  
 Conc: 50.36 ng/ml



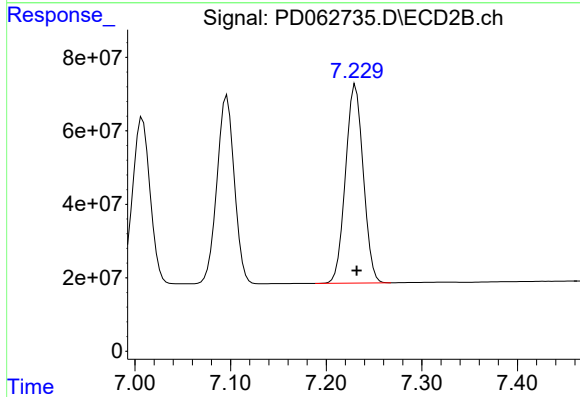
#18 Endrin aldehyde

R.T.: 7.008 min  
 Delta R.T.: 0.000 min  
 Response: 584902959  
 Conc: 50.13 ng/ml

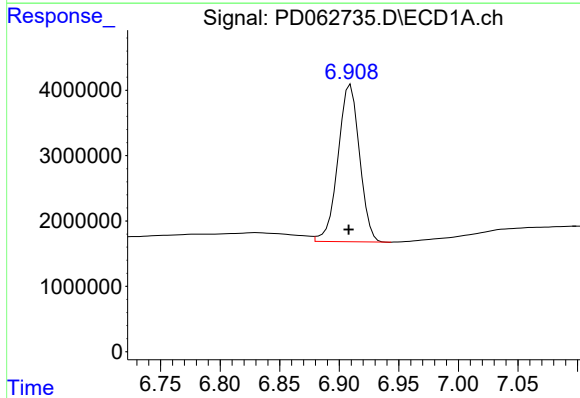


#19 Endosulfan Sulfate  
 R.T.: 6.651 min  
 Delta R.T.: 0.000 min  
 Response: 54224224  
 Conc: 51.79 ng/ml

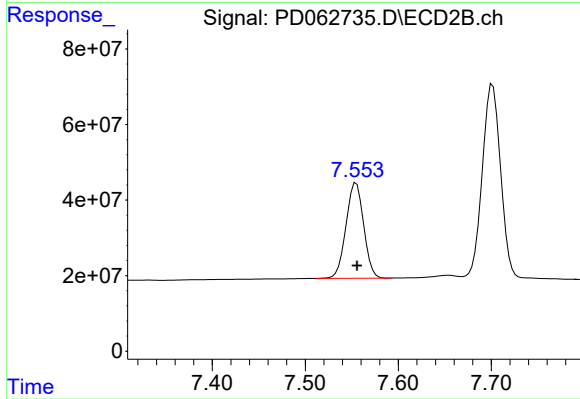
Instrument :  
 ECD\_D  
 ClientSampleId :  
 ICVPD050621



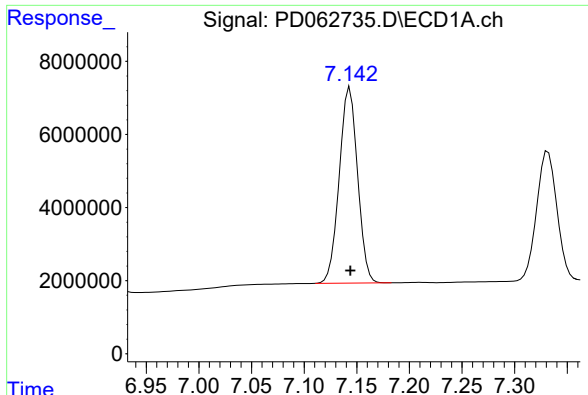
#19 Endosulfan Sulfate  
 R.T.: 7.231 min  
 Delta R.T.: -0.001 min  
 Response: 700520350  
 Conc: 50.37 ng/ml



#20 Methoxychlor  
 R.T.: 6.910 min  
 Delta R.T.: 0.002 min  
 Response: 30297391  
 Conc: 51.47 ng/ml



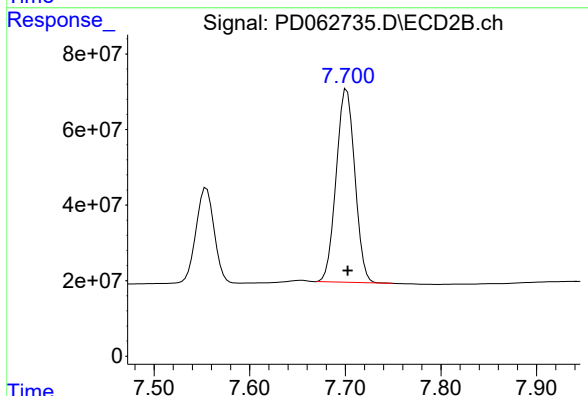
#20 Methoxychlor  
 R.T.: 7.555 min  
 Delta R.T.: -0.001 min  
 Response: 333595973  
 Conc: 49.98 ng/ml



#21 Endrin ketone

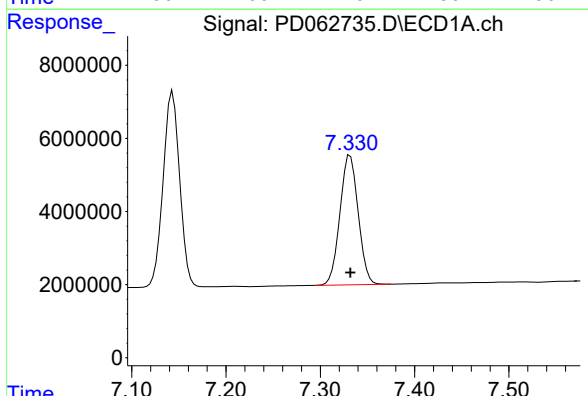
R.T.: 7.143 min  
 Delta R.T.: 0.000 min  
 Response: 65229651  
 Conc: 52.32 ng/ml

Instrument :  
 ECD\_D  
 ClientSampleId :  
 ICVPD050621



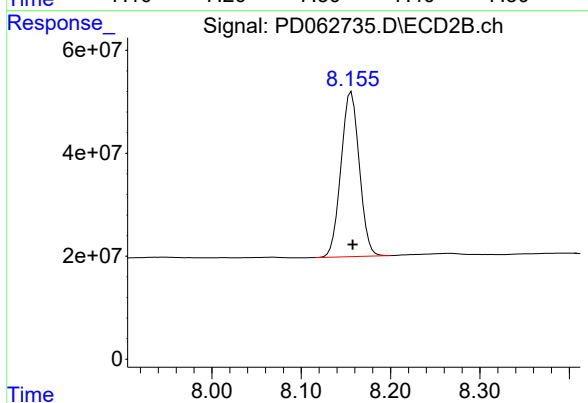
#21 Endrin ketone

R.T.: 7.702 min  
 Delta R.T.: -0.001 min  
 Response: 692724942  
 Conc: 51.05 ng/ml



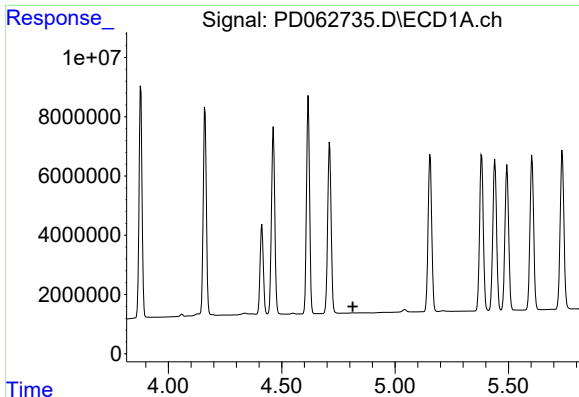
#22 Mirex

R.T.: 7.332 min  
 Delta R.T.: 0.000 min  
 Response: 47743950  
 Conc: 52.15 ng/ml



#22 Mirex

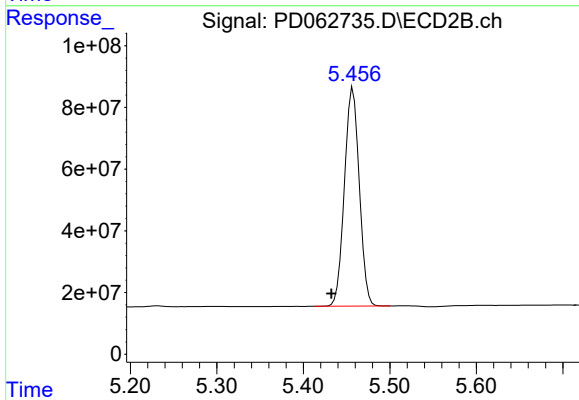
R.T.: 8.156 min  
 Delta R.T.: -0.001 min  
 Response: 457191690  
 Conc: 49.91 ng/ml



#24 Chlordane-2

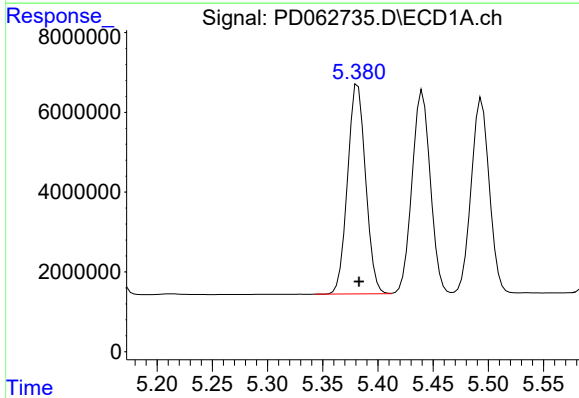
R.T.: 0.000 min  
Exp R.T.: 4.813 min  
Response: 0  
Conc: N.D.

Instrument :  
ECD\_D  
ClientSampleId :  
ICVPD050621



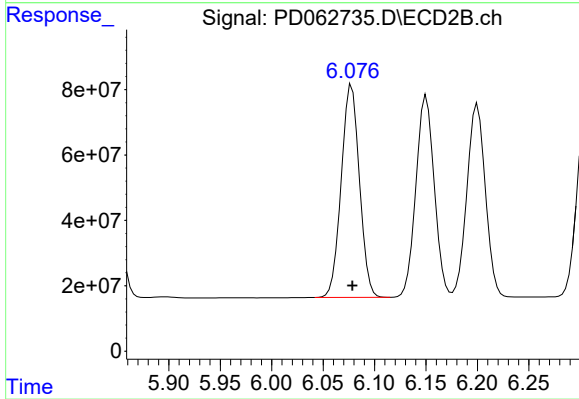
#24 Chlordane-2

R.T.: 5.457 min  
Delta R.T.: 0.025 min  
Response: 840468451  
Conc: 1574.30 ng/ml



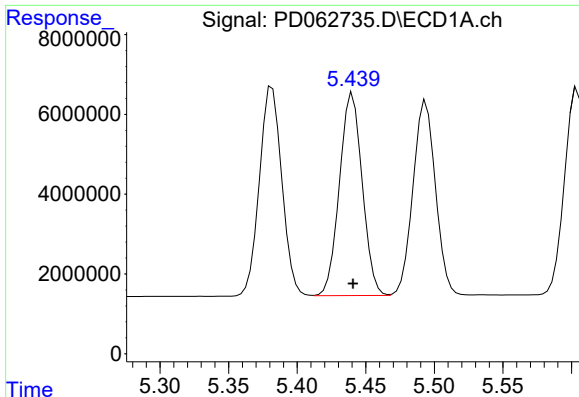
#25 Chlordane-3

R.T.: 5.382 min  
Delta R.T.: -0.001 min  
Response: 59792472  
Conc: 504.60 ng/ml



#25 Chlordane-3

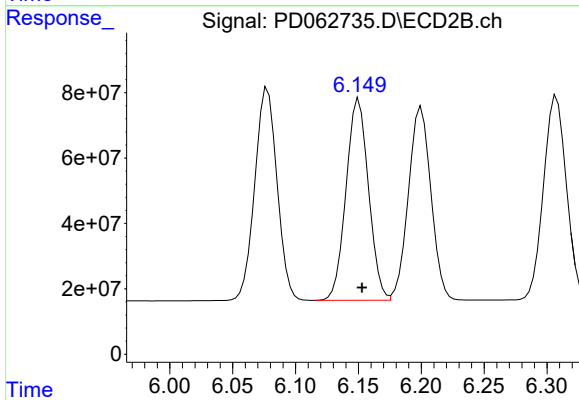
R.T.: 6.078 min  
Delta R.T.: 0.000 min  
Response: 801438799  
Conc: 358.60 ng/ml



#26 Chlordane-4

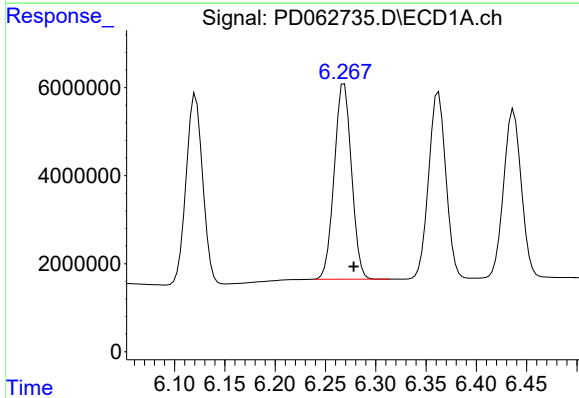
R.T.: 5.440 min  
Delta R.T.: 0.000 min  
Response: 58699526  
Conc: 605.31 ng/ml

Instrument :  
ECD\_D  
ClientSampled :  
ICVPD050621



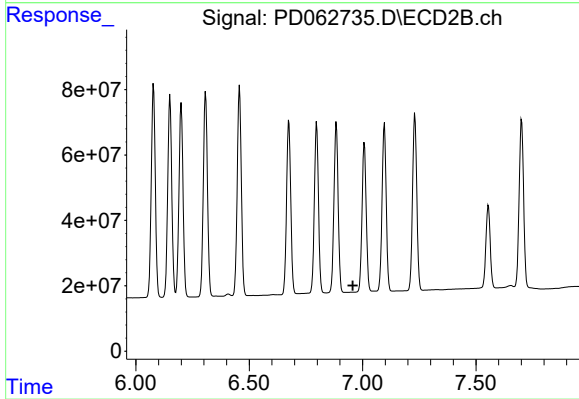
#26 Chlordane-4

R.T.: 6.150 min  
Delta R.T.: -0.003 min  
Response: 766548392  
Conc: 297.19 ng/ml



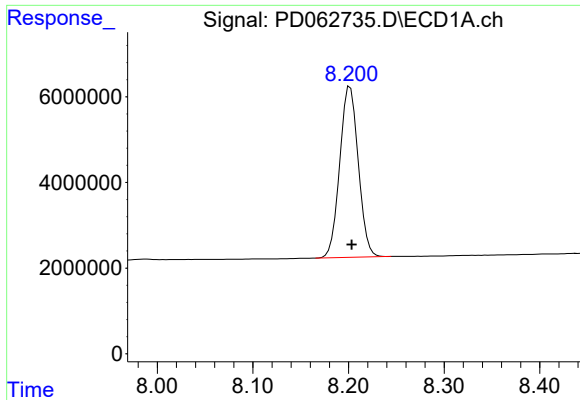
#27 Chlordane-5

R.T.: 6.269 min  
Delta R.T.: -0.009 min  
Response: 53007442  
Conc: 1215.97 ng/ml



#27 Chlordane-5

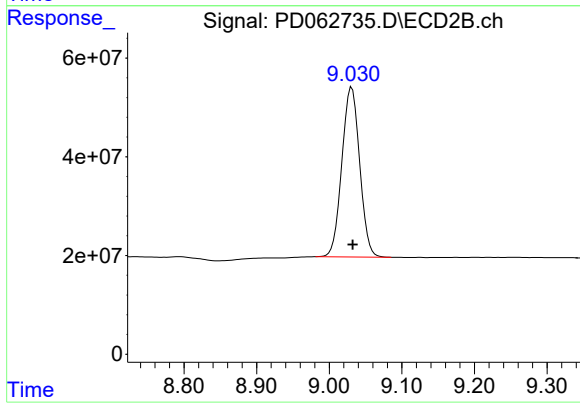
R.T.: 0.000 min  
Exp R.T.: 6.957 min  
Response: 0  
Conc: N.D.



#28 Decachlorobiphenyl

R.T.: 8.202 min  
Delta R.T.: -0.002 min  
Response: 53927449  
Conc: 50.94 ng/ml

Instrument :  
ECD\_D  
ClientSampleId :  
ICVPD050621



#28 Decachlorobiphenyl

R.T.: 9.031 min  
Delta R.T.: -0.001 min  
Response: 586667430  
Conc: 50.84 ng/ml