

Data Path : Z:\pestpcbsrv\HPCHEM1\ECD_D\Data\PD050722\
 Data File : PD069469.D
 Signal(s) : Signal #1: ECD1A.ch Signal #2: ECD2B.ch
 Acq On : 06 May 2022 21:06
 Operator : AR\AJ
 Sample : INDB201
 Misc :
 ALS Vial : 13 Sample Multiplier: 1

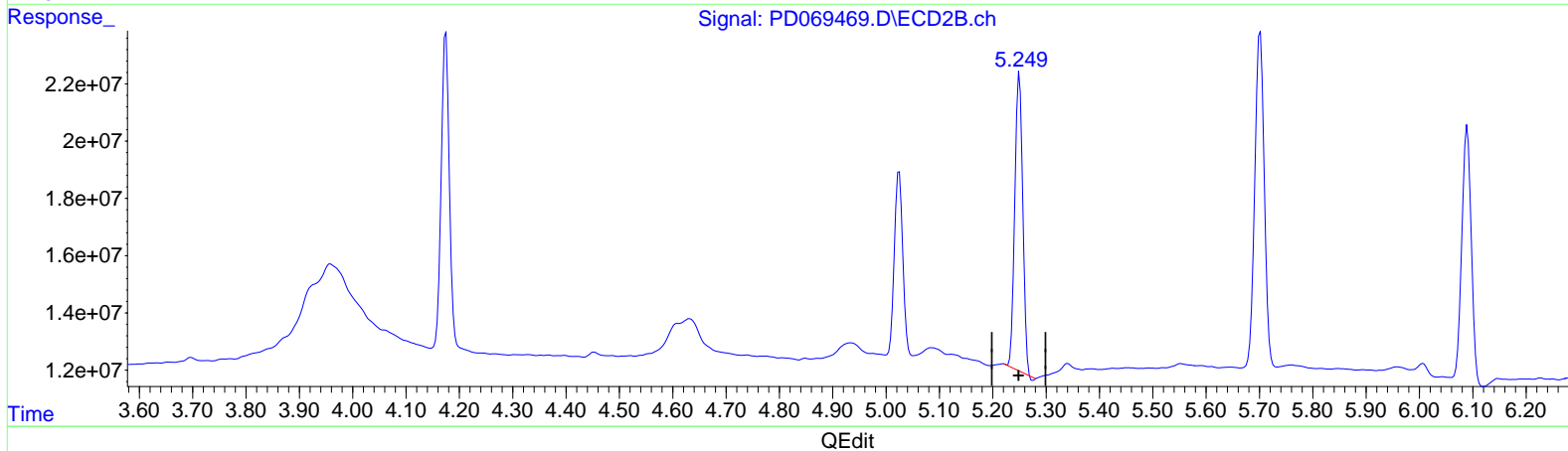
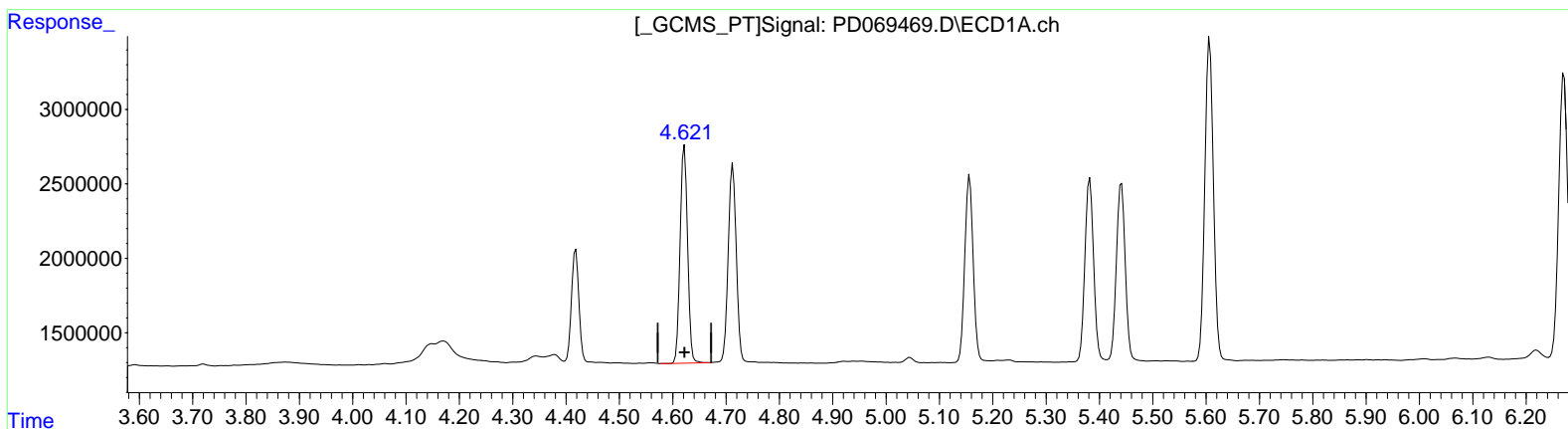
Instrument :
 ECD_D
 ClientSampleId :
 INDB2051

Manual Integrations APPROVED

Reviewed By : Abdul Mirza 05/09/2022
 Supervised By : mohammad ahmed 05/11/2022

Integration File signal 1: autoint1.e
 Integration File signal 2: autoint2.e
 Quant Time: May 07 04:51:52 2022
 Quant Method : Z:\pestpcbsrv\HPCHEM1\ECD_D\Method\PD050722CLP.M
 Quant Title : GC Extractables
 QLast Update : Sat May 07 04:51:40 2022
 Response via : Initial Calibration
 Integrator: ChemStation

Volume Inj. : 1 µl
 Signal #1 Phase : ZB-MR2 Signal #2 Phase: ZB-MR1
 Signal #1 Info : 30M x 0.32mm x 0.2 Signal #2 Info : 30M x 0.32mm x 0.50µm



(7) delta-BHC (B)
 4.622min 9.633 ng/ml
 response 14213257

(7) delta-BHC #2 (B)
 5.250min 9.748 ng/ml
 response 106834314

Data Path : Z:\pestpcbsrv\HPCHEM1\ECD_D\Data\PD050722\
 Data File : PD069469.D
 Signal(s) : Signal #1: ECD1A.ch Signal #2: ECD2B.ch
 Acq On : 06 May 2022 21:06
 Operator : AR\AJ
 Sample : INDB201
 Misc :
 ALS Vial : 13 Sample Multiplier: 1

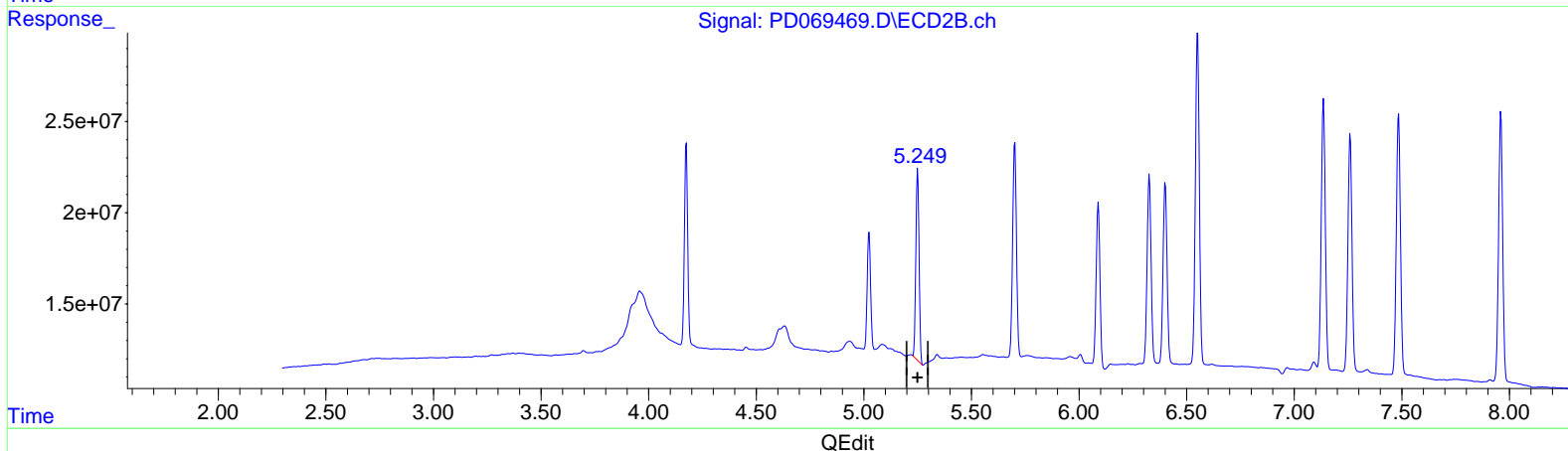
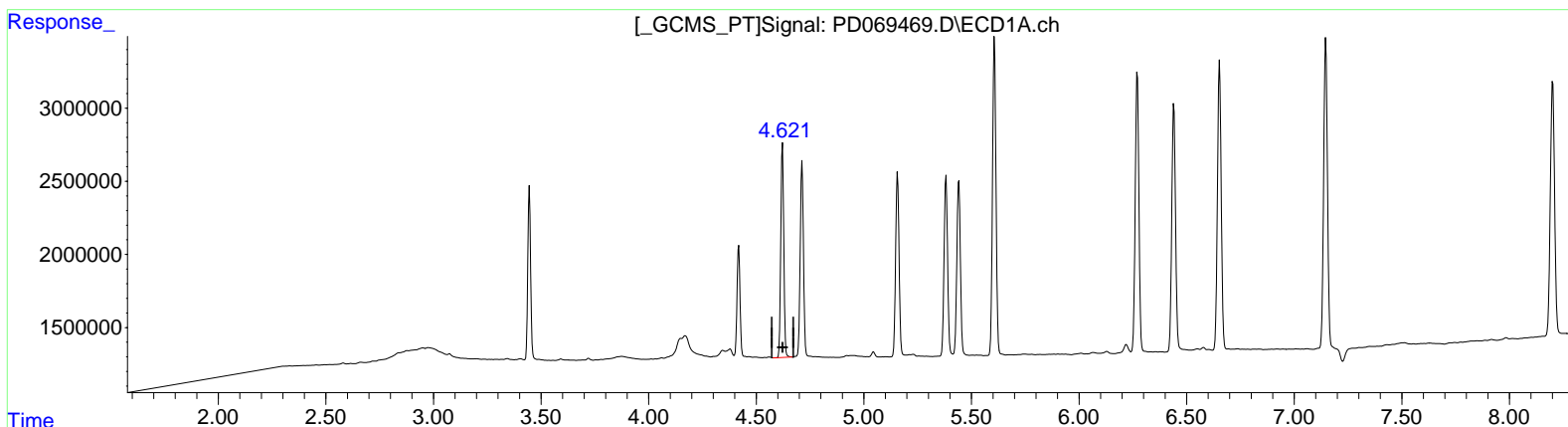
Instrument :
 ECD_D
 ClientSampleId :
 INDB2051

Manual Integrations APPROVED

Reviewed By : Abdul Mirza 05/09/2022
 Supervised By : mohammad ahmed 05/11/2022

Integration File signal 1: autoint1.e
 Integration File signal 2: autoint2.e
 Quant Time: May 07 04:51:52 2022
 Quant Method : Z:\pestpcbsrv\HPCHEM1\ECD_D\Method\PD050722CLP.M
 Quant Title : GC Extractables
 QLast Update : Sat May 07 04:51:40 2022
 Response via : Initial Calibration
 Integrator: ChemStation

Volume Inj. : 1 µl
 Signal #1 Phase : ZB-MR2 Signal #2 Phase: ZB-MR1
 Signal #1 Info : 30M x 0.32mm x 0.2 Signal #2 Info : 30M x 0.32mm x 0.50µm



(7) delta-BHC (B)
 4.622min 9.633 ng/ml
 response 14213257

(7) delta-BHC #2 (B)
 5.249min 9.989 ng/ml m
 response 109471605