

Data Path : Z:\pestpcbsrv\HPCHEM1\ECD_D\Data\PD050821\
 Data File : PD062797.D
 Signal(s) : Signal #1: ECD1A.ch Signal #2: ECD2B.ch
 Acq On : 07 May 2021 11:47
 Operator : AR\AJ
 Sample : M2262-02
 Misc : TOX LOQ 100 PPB
 ALS Vial : 9 Sample Multiplier: 1

Instrument :
 ECD_D
 ClientSampleId :
 LOQ-SOIL-02-QT2-2021

Integration File signal 1: autoint1.e
 Integration File signal 2: autoint2.e
 Quant Time: May 08 07:42:43 2021
 Quant Method : Z:\pestpcbsrv\HPCHEM1\ECD_D\Method\DTX050621.M
 Quant Title : GC Extractables
 QLast Update : Thu May 06 11:04:20 2021
 Response via : Initial Calibration
 Integrator: ChemStation

Volume Inj. : 1 µl
 Signal #1 Phase : ZB-MR2 Signal #2 Phase: ZB-MR1
 Signal #1 Info : 30M x 0.32mm x0.2 Signal #2 Info : 30M x 0.32mm x 0.50µm

Compound	RT#1	RT#2	Resp#1	Resp#2	ng/ml	ng/ml

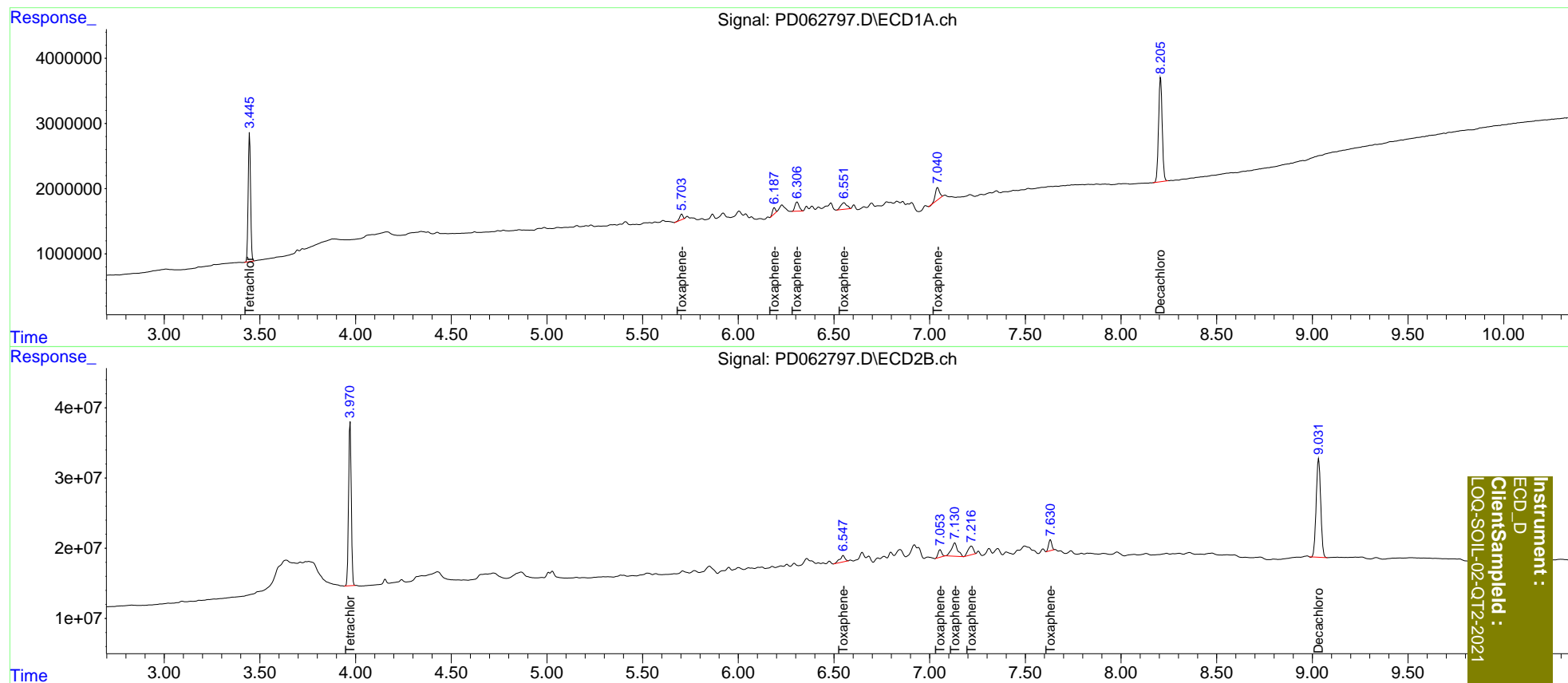
System Monitoring Compounds						
1) SA Tetrachlo...	3.446	3.972	17234952	228.2E6	18.420	18.805
7) SA Decachlor...	8.207	9.033	21231311	231.5E6	18.964	19.547
Target Compounds						
2) Toxaphene-1	5.705	6.549	993393	17143686	129.047	115.155
3) Toxaphene-2	6.188	7.055	981387	13996711	118.005	112.436
4) Toxaphene-3	6.307	7.132	2145460	42885321	112.988	118.772
5) Toxaphene-4	6.553	7.218	2227565	23985628	113.880	107.244
6) Toxaphene-5	7.041	7.631	2735584	18241636	123.482	115.222

(f)=RT Delta > 1/2 Window (#)=Amounts differ by > 25% (m)=manual int.

Data Path : Z:\pestpcbsrv\HPCHEM1\ECD_D\Data\PD050821\
 Data File : PD062797.D
 Signal(s) : Signal #1: ECD1A.ch Signal #2: ECD2B.ch
 Acq On : 07 May 2021 11:47
 Operator : AR\AJ
 Sample : M2262-02
 Misc : TOX LOQ 100 PPB
 ALS Vial : 9 Sample Multiplier: 1

Integration File signal 1: autoint1.e
 Integration File signal 2: autoint2.e
 Quant Time: May 08 07:42:43 2021
 Quant Method : Z:\pestpcbsrv\HPCHEM1\ECD_D\Method\DTX050621.M
 Quant Title : GC Extractables
 QLast Update : Thu May 06 11:04:20 2021
 Response via : Initial Calibration
 Integrator: ChemStation

Volume Inj. : 1 µl
 Signal #1 Phase : ZB-MR2 Signal #2 Phase: ZB-MR1
 Signal #1 Info : 30M x 0.32mm x0.2 Signal #2 Info : 30M x 0.32mm x 0.50µm



Instrument :
 ECD_D
 ClientSampleId :
 LOQ-SOIL-02-QT2-2021