

Data Path : Z:\pestpcbsrv\HPCHEM1\ECD_D\Data\PD050825\
 Data File : PD088436.D
 Signal(s) : Signal #1: ECD1A.ch Signal #2: ECD2B.ch
 Acq On : 08 May 2025 17:27
 Operator : AR\AJ
 Sample : PB167914BS
 Misc :
 ALS Vial : 6 Sample Multiplier: 1

Instrument :
 ECD_D
 ClientSampleId :
 PB167914BS

Integration File signal 1: autoint1.e
 Integration File signal 2: autoint2.e
 Quant Time: May 09 02:04:54 2025
 Quant Method : Z:\pestpcbsrv\HPCHEM1\ECD_D\Method\PD041825.M
 Quant Title : GC Extractables
 QLast Update : Sat Apr 19 06:32:27 2025
 Response via : Initial Calibration
 Integrator: ChemStation

Volume Inj. : 1 µl
 Signal #1 Phase : ZB-MR2 Signal #2 Phase: ZB-MR2
 Signal #1 Info : 30M x 0.32mm x0.5 Signal #2 Info : 30M x 0.32mm x 0.25µm

	Compound	RT#1	RT#2	Resp#1	Resp#2	ng/ml	ng/ml

System Monitoring Compounds							
1)	SA Tetrachlo...	3.550	2.882	36391437	277.1E6	18.219	18.950
28)	SA Decachlor...	9.074	8.075	69432767	380.5E6	20.989	20.589
Target Compounds							
2)	A alpha-BHC	4.000	3.395	199.9E6	1025.9E6	46.366	44.872
3)	MA gamma-BHC...	4.331	3.731	192.7E6	961.5E6	46.018	44.640
4)	MA Heptachlor	4.930	4.085	190.9E6	964.3E6	47.261	45.066
5)	MB Aldrin	5.272	4.371	186.9E6	947.1E6	47.318	45.528
6)	B beta-BHC	4.515	4.027	74920978	433.3E6	46.151	46.820
7)	B delta-BHC	4.764	4.264	206.8E6	967.2E6	50.143	45.492
8)	B Heptachlo...	5.691	4.875	168.8E6	861.5E6	47.232	45.597
9)	A Endosulfan I	6.076	5.249	160.5E6	825.1E6	47.530	45.809
10)	B gamma-Chl...	5.946	5.128	170.7E6	930.9E6	47.134	45.869
11)	B alpha-Chl...	6.027	5.193	171.1E6	897.1E6	47.407	45.766
12)	B 4,4'-DDE	6.197	5.378	156.0E6	907.3E6	47.312	46.069
13)	MA Dieldrin	6.348	5.515	172.0E6	918.5E6	48.204	46.082
14)	MA Endrin	6.575	5.792	144.8E6	847.3E6	48.538	46.550
15)	B Endosulfa...	6.786	6.083	147.7E6	806.4E6	47.260	46.021
16)	A 4,4'-DDD	6.706	5.932	122.2E6	766.5E6	48.587	46.779
17)	MA 4,4'-DDT	7.022	6.187	136.4E6	799.5E6	49.099	46.984
18)	B Endrin al...	6.916	6.261	113.5E6	624.9E6	49.198	46.984
19)	B Endosulfa...	7.150	6.485	138.9E6	788.9E6	48.310	46.046
20)	A Methoxychlor	7.493	6.757	72906502	426.8E6	48.619	46.791
21)	B Endrin ke...	7.631	6.994	151.1E6	866.5E6	48.960	46.325
22)	Mirex	8.115	7.188	110.6E6	663.5E6	47.084	44.771
23)	Chlordane-1	0.000	3.899	0	1508401	N.D.	1.881 #
24)	Chlordane-2	5.272f	4.509	186.9E6	5545117	1122.238	6.719 #
25)	Chlordane-3	5.946	5.128	170.7E6	930.9E6	253.100	368.103 #
26)	Chlordane-4	6.027	5.193	171.1E6	897.1E6	209.876	419.588 #
27)	Chlordane-5	0.000	6.083	0	806.4E6	N.D.	835.158 #

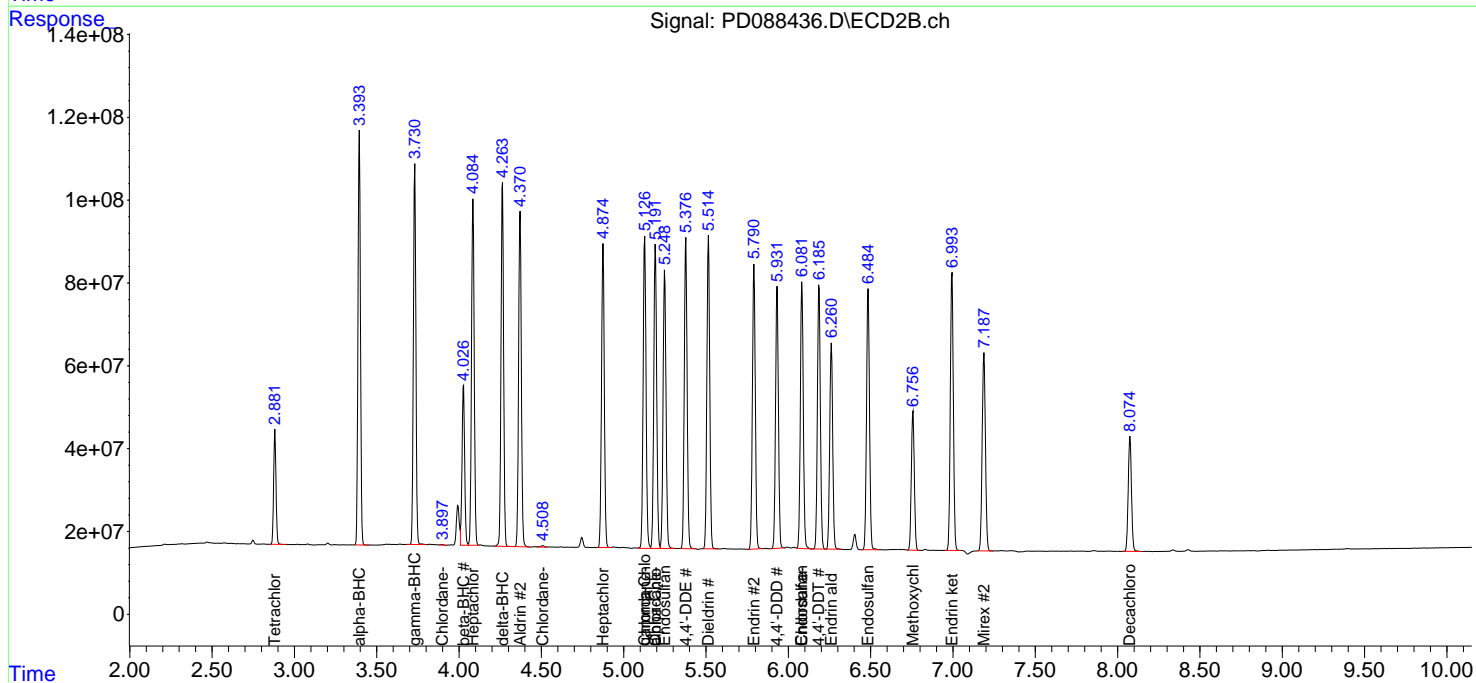
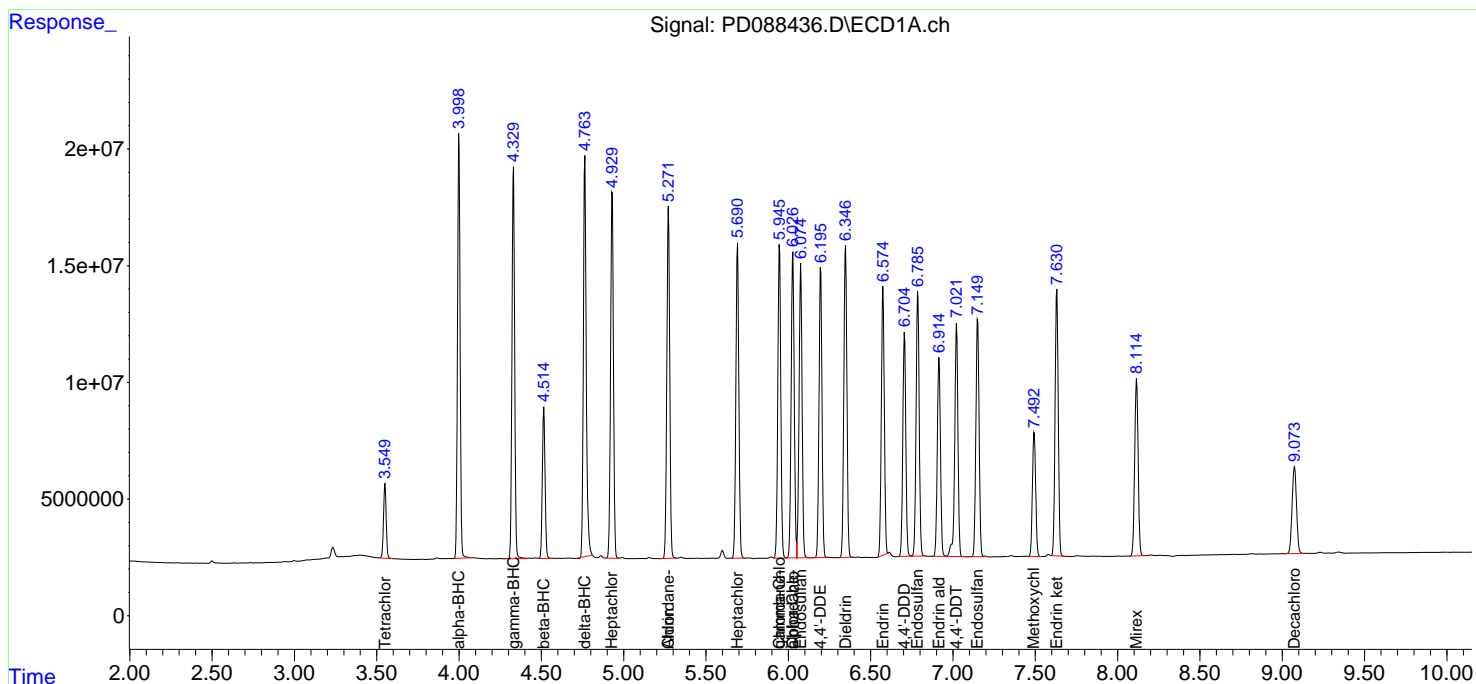
(f)=RT Delta > 1/2 Window (#)=Amounts differ by > 25% (m)=manual int.

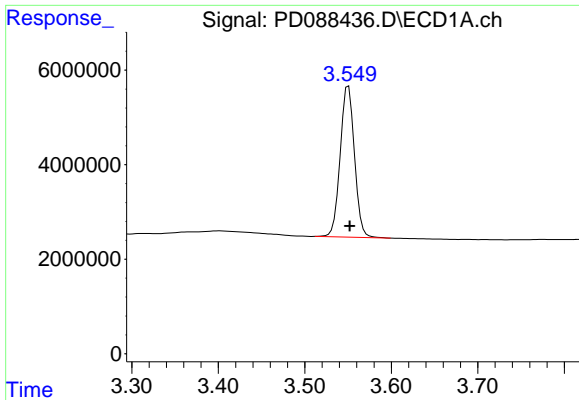
Data Path : Z:\pestpcbsrv\HPCHEM1\ECD_D\Data\PD050825\
 Data File : PD088436.D
 Signal(s) : Signal #1: ECD1A.ch Signal #2: ECD2B.ch
 Acq On : 08 May 2025 17:27
 Operator : AR\AJ
 Sample : PB167914BS
 Misc :
 ALS Vial : 6 Sample Multiplier: 1

Instrument :
 ECD_D
 ClientSampleId :
 PB167914BS

Integration File signal 1: autoint1.e
 Integration File signal 2: autoint2.e
 Quant Time: May 09 02:04:54 2025
 Quant Method : Z:\pestpcbsrv\HPCHEM1\ECD_D\Method\PD041825.M
 Quant Title : GC Extractables
 QLast Update : Sat Apr 19 06:32:27 2025
 Response via : Initial Calibration
 Integrator: ChemStation

Volume Inj. : 1 µl
 Signal #1 Phase : ZB-MR1 Signal #2 Phase: ZB-MR2
 Signal #1 Info : 30M x 0.32mm x0.5 Signal #2 Info : 30M x 0.32mm x 0.25µm

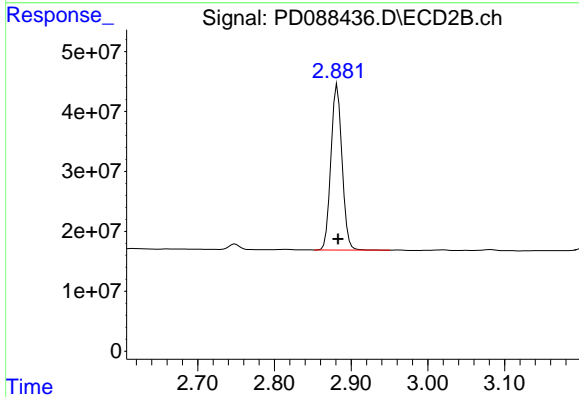




#1 Tetrachloro-m-xylene

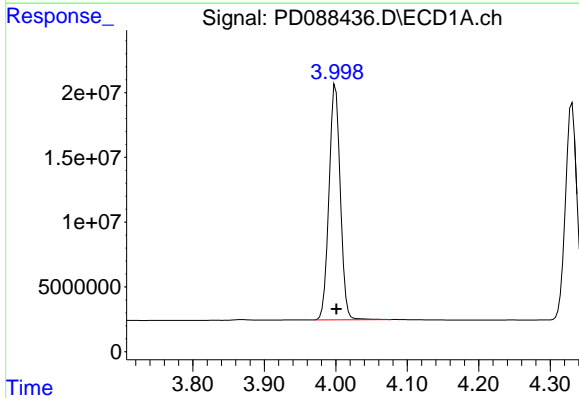
R.T.: 3.550 min
 Delta R.T.: -0.002 min
 Response: 36391437
 Conc: 18.22 ng/ml

Instrument :
 ECD_D
 ClientSampleId :
 PB167914BS



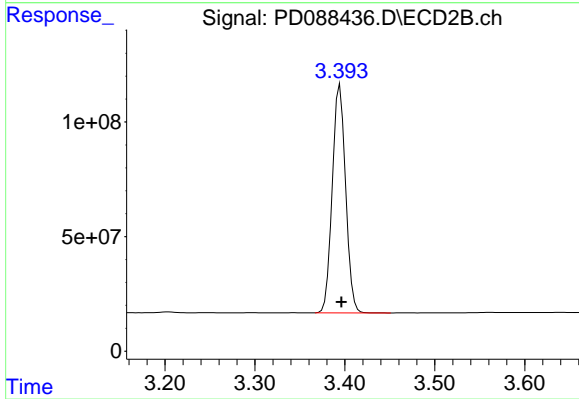
#1 Tetrachloro-m-xylene

R.T.: 2.882 min
 Delta R.T.: -0.001 min
 Response: 277073360
 Conc: 18.95 ng/ml



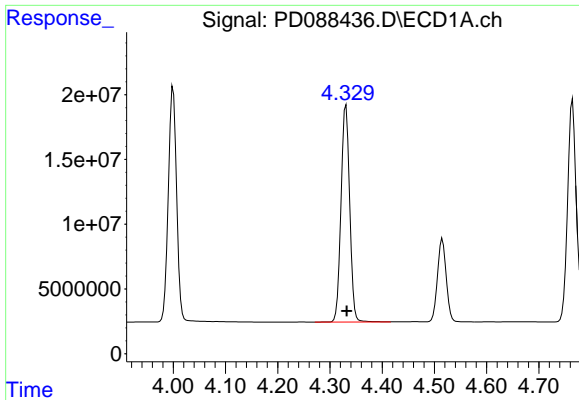
#2 alpha-BHC

R.T.: 4.000 min
 Delta R.T.: -0.001 min
 Response: 199929654
 Conc: 46.37 ng/ml



#2 alpha-BHC

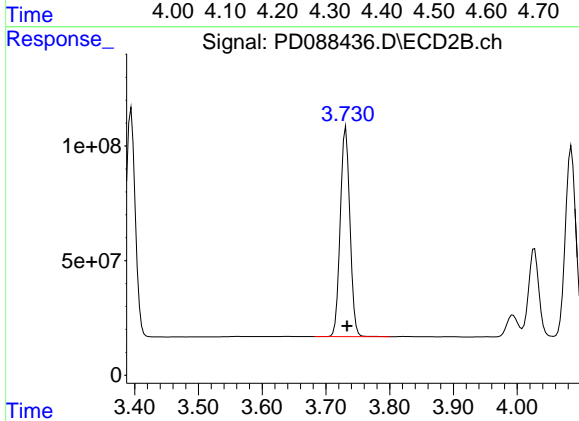
R.T.: 3.395 min
 Delta R.T.: -0.002 min
 Response: 1025850476
 Conc: 44.87 ng/ml



#3 gamma-BHC (Lindane)

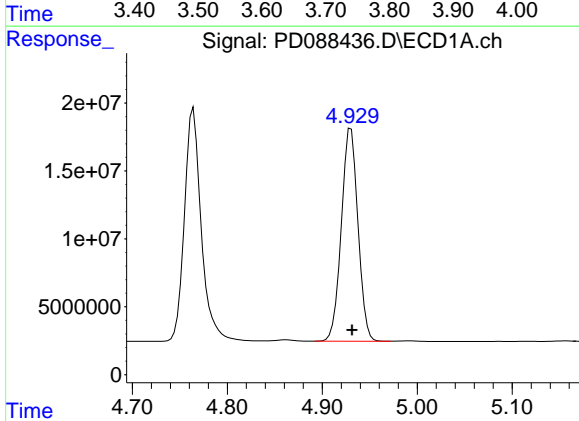
R.T.: 4.331 min
 Delta R.T.: -0.001 min
 Response: 192701070
 Conc: 46.02 ng/ml

Instrument :
 ECD_D
 ClientSampleId :
 PB167914BS



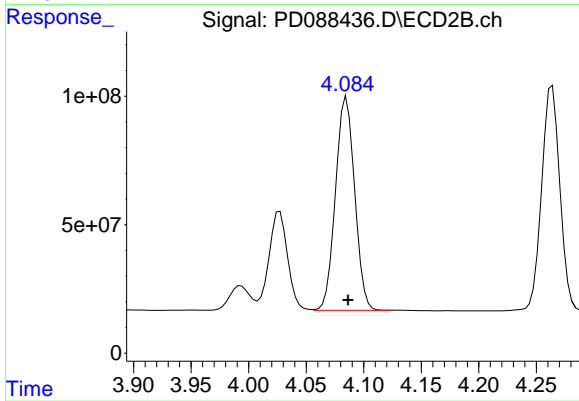
#3 gamma-BHC (Lindane)

R.T.: 3.731 min
 Delta R.T.: -0.002 min
 Response: 961494946
 Conc: 44.64 ng/ml



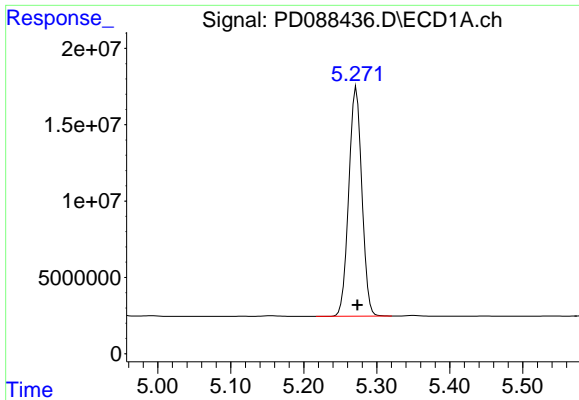
#4 Heptachlor

R.T.: 4.930 min
 Delta R.T.: -0.001 min
 Response: 190883274
 Conc: 47.26 ng/ml



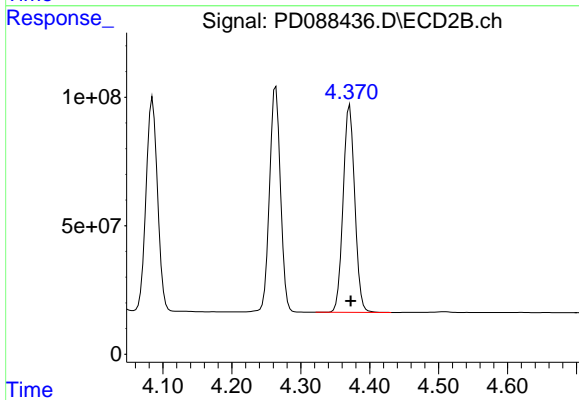
#4 Heptachlor

R.T.: 4.085 min
 Delta R.T.: -0.001 min
 Response: 964337971
 Conc: 45.07 ng/ml

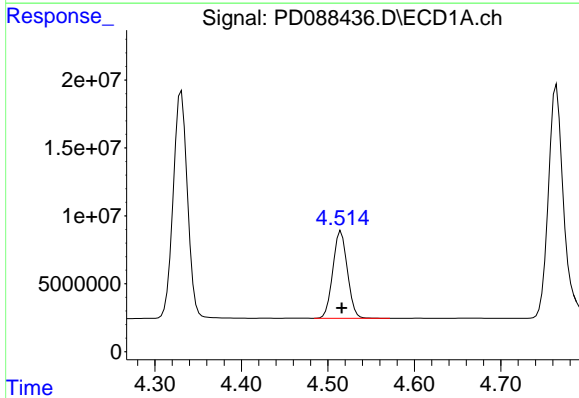


#5 Aldrin
R.T.: 5.272 min
Delta R.T.: -0.001 min
Response: 186884909
Conc: 47.32 ng/ml

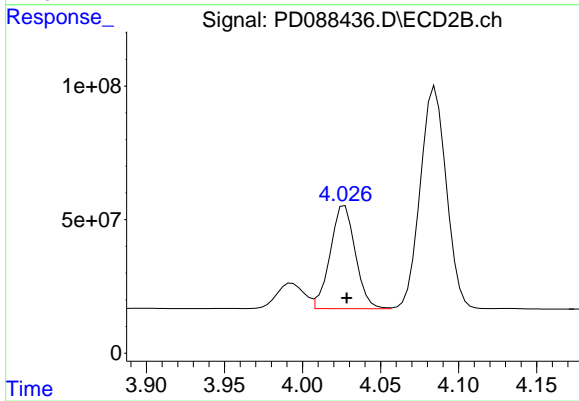
Instrument :
ECD_D
ClientSampleId :
PB167914BS



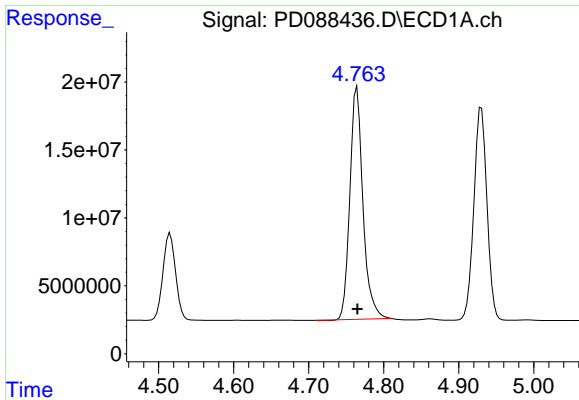
#5 Aldrin
R.T.: 4.371 min
Delta R.T.: -0.002 min
Response: 947102007
Conc: 45.53 ng/ml



#6 beta-BHC
R.T.: 4.515 min
Delta R.T.: 0.000 min
Response: 74920978
Conc: 46.15 ng/ml



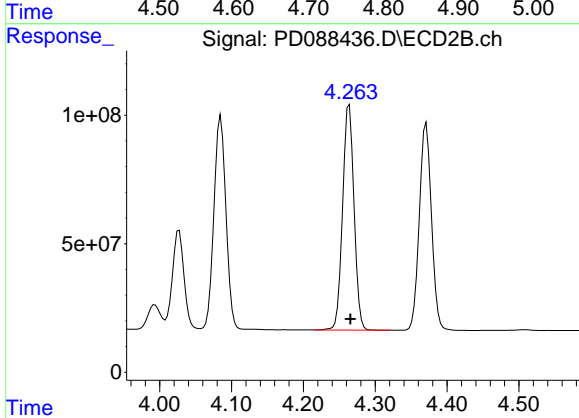
#6 beta-BHC
R.T.: 4.027 min
Delta R.T.: -0.001 min
Response: 433281187
Conc: 46.82 ng/ml



#7 delta-BHC

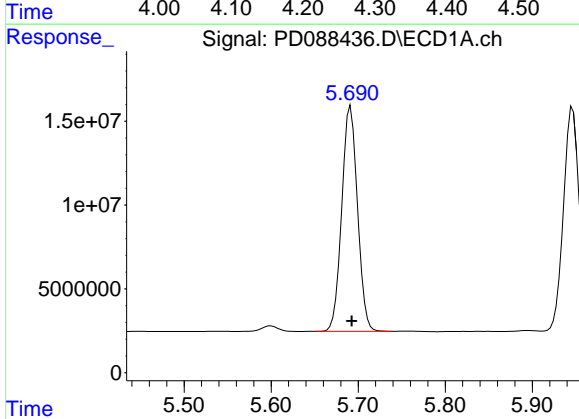
R.T.: 4.764 min
 Delta R.T.: 0.000 min
 Response: 206837026
 Conc: 50.14 ng/ml

Instrument :
 ECD_D
 ClientSampleId :
 PB167914BS



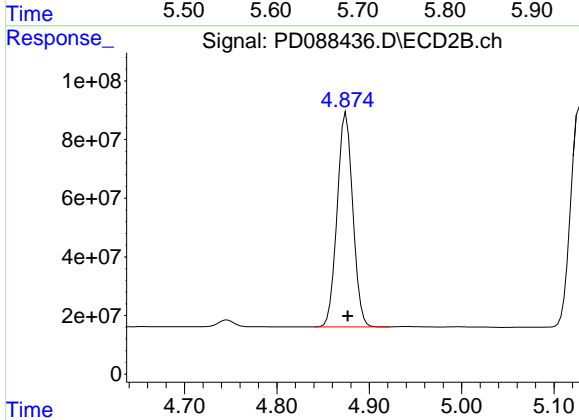
#7 delta-BHC

R.T.: 4.264 min
 Delta R.T.: -0.001 min
 Response: 967228558
 Conc: 45.49 ng/ml



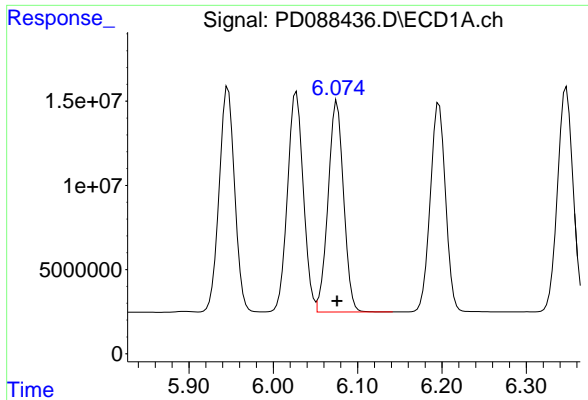
#8 Heptachlor epoxide

R.T.: 5.691 min
 Delta R.T.: -0.001 min
 Response: 168805781
 Conc: 47.23 ng/ml



#8 Heptachlor epoxide

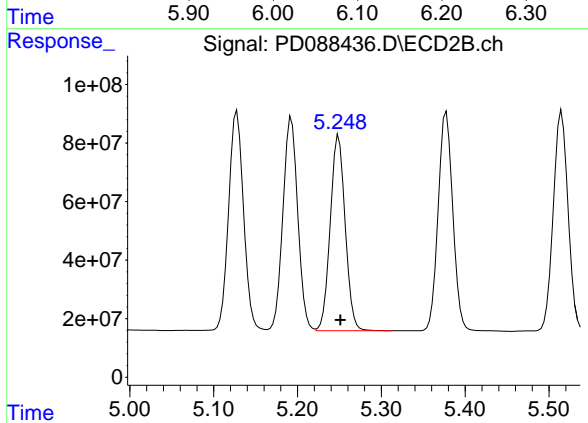
R.T.: 4.875 min
 Delta R.T.: -0.002 min
 Response: 861520808
 Conc: 45.60 ng/ml



#9 Endosulfan I

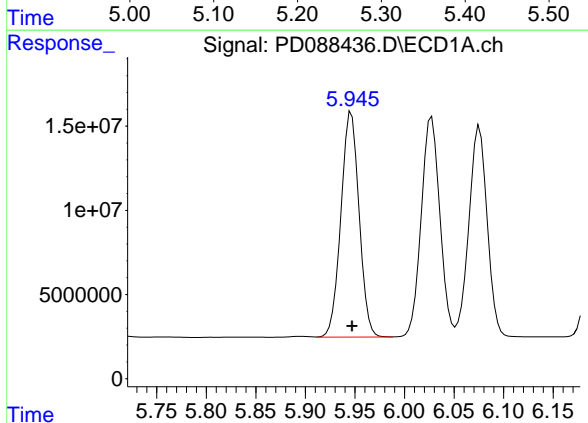
R.T.: 6.076 min
 Delta R.T.: 0.000 min
 Response: 160516358
 Conc: 47.53 ng/ml

Instrument :
 ECD_D
 ClientSampleId :
 PB167914BS



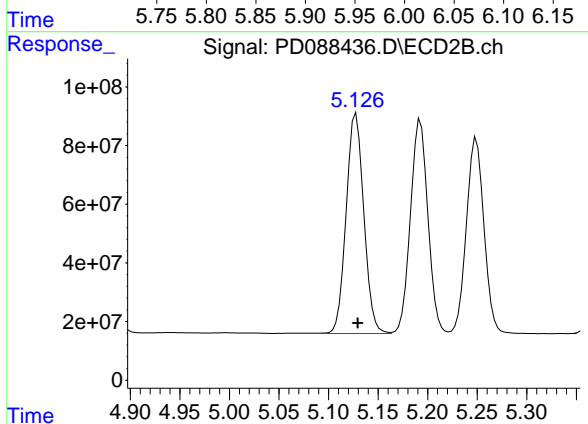
#9 Endosulfan I

R.T.: 5.249 min
 Delta R.T.: -0.002 min
 Response: 825139093
 Conc: 45.81 ng/ml



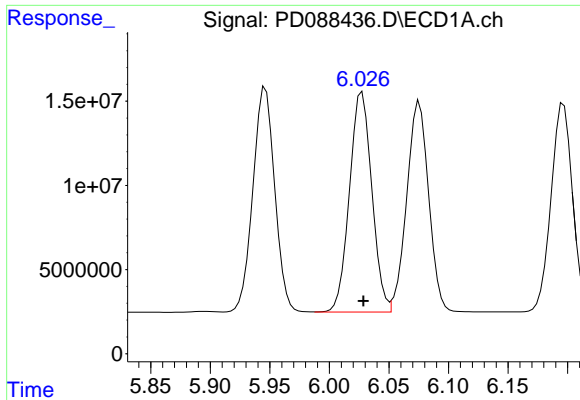
#10 gamma-Chlordane

R.T.: 5.946 min
 Delta R.T.: 0.000 min
 Response: 170723637
 Conc: 47.13 ng/ml



#10 gamma-Chlordane

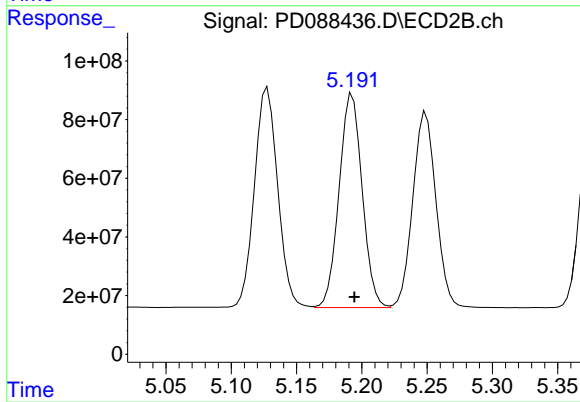
R.T.: 5.128 min
 Delta R.T.: -0.002 min
 Response: 930948237
 Conc: 45.87 ng/ml



#11 alpha-Chlordane

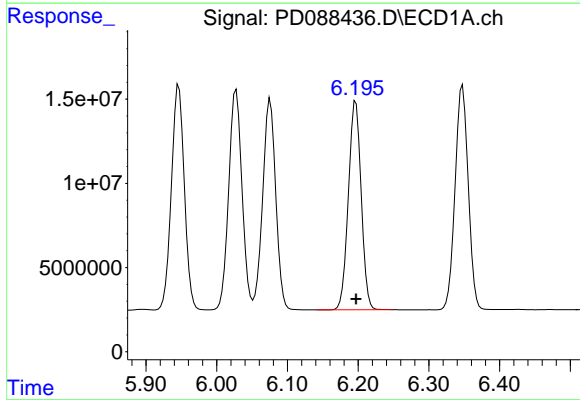
R.T.: 6.027 min
 Delta R.T.: -0.001 min
 Response: 171117689
 Conc: 47.41 ng/ml

Instrument :
 ECD_D
 ClientSampleId :
 PB167914BS



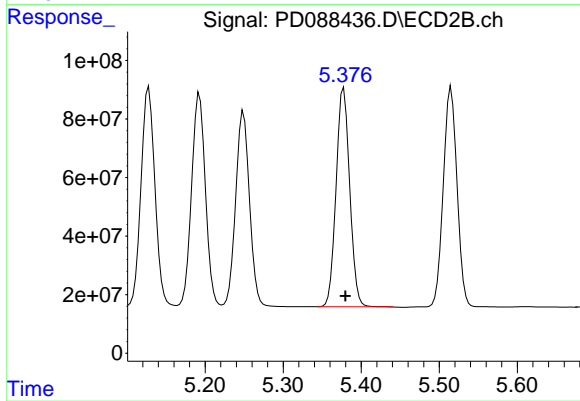
#11 alpha-Chlordane

R.T.: 5.193 min
 Delta R.T.: -0.002 min
 Response: 897144374
 Conc: 45.77 ng/ml



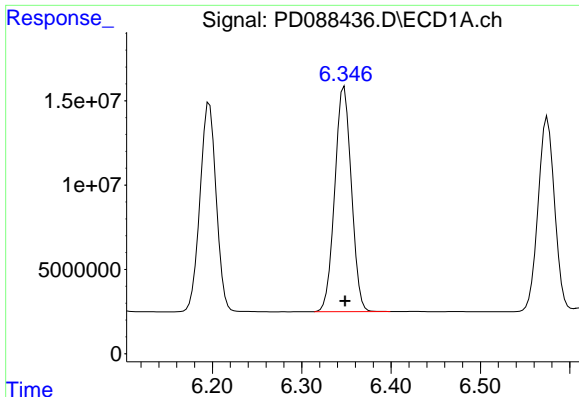
#12 4,4'-DDE

R.T.: 6.197 min
 Delta R.T.: 0.000 min
 Response: 156047720
 Conc: 47.31 ng/ml



#12 4,4'-DDE

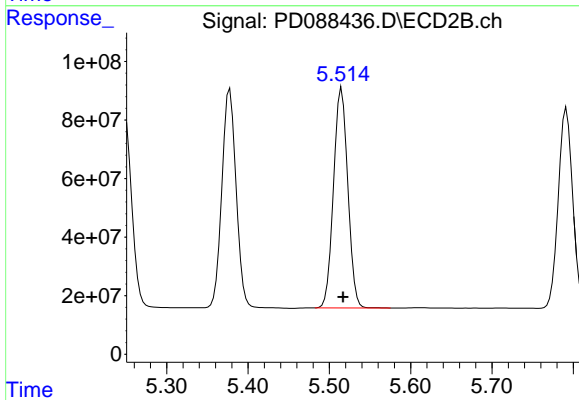
R.T.: 5.378 min
 Delta R.T.: -0.002 min
 Response: 907289366
 Conc: 46.07 ng/ml



#13 Dieldrin

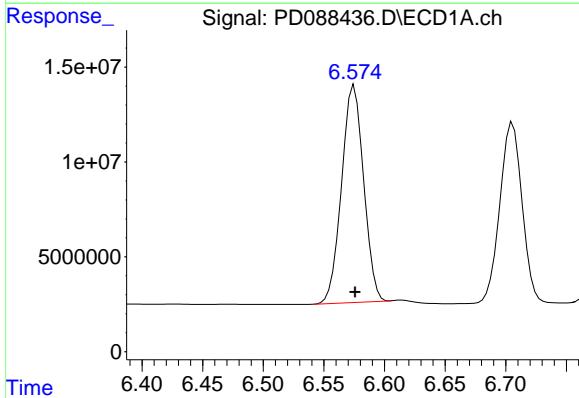
R.T.: 6.348 min
 Delta R.T.: -0.001 min
 Response: 172015333
 Conc: 48.20 ng/ml

Instrument :
 ECD_D
 ClientSampleId :
 PB167914BS



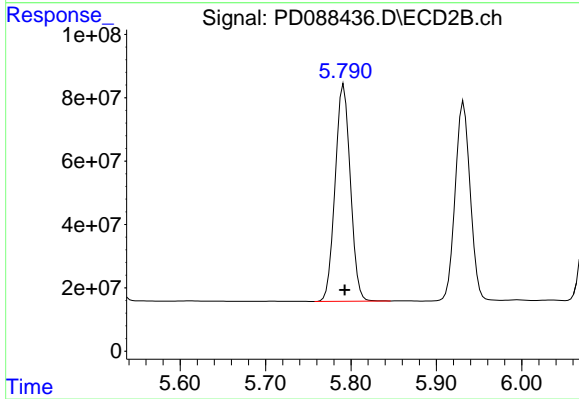
#13 Dieldrin

R.T.: 5.515 min
 Delta R.T.: -0.002 min
 Response: 918541103
 Conc: 46.08 ng/ml



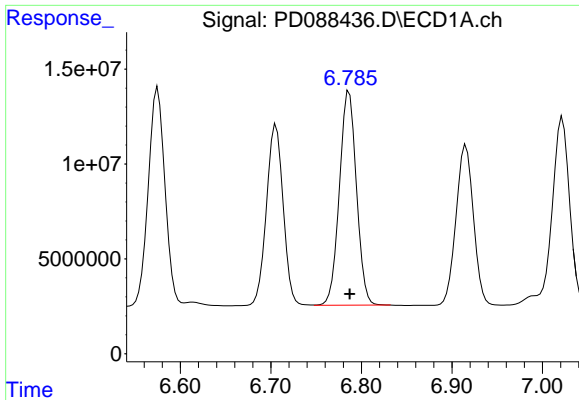
#14 Endrin

R.T.: 6.575 min
 Delta R.T.: 0.000 min
 Response: 144766756
 Conc: 48.54 ng/ml



#14 Endrin

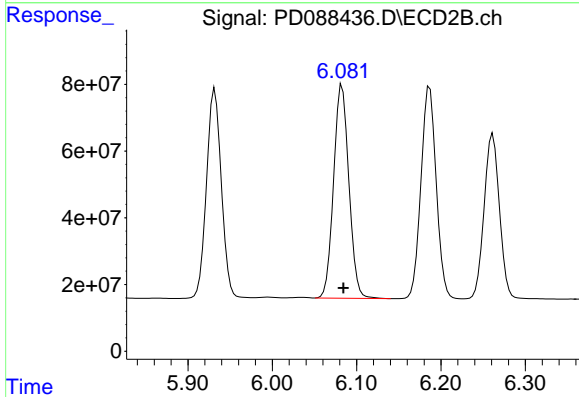
R.T.: 5.792 min
 Delta R.T.: -0.001 min
 Response: 847322800
 Conc: 46.55 ng/ml



#15 Endosulfan II

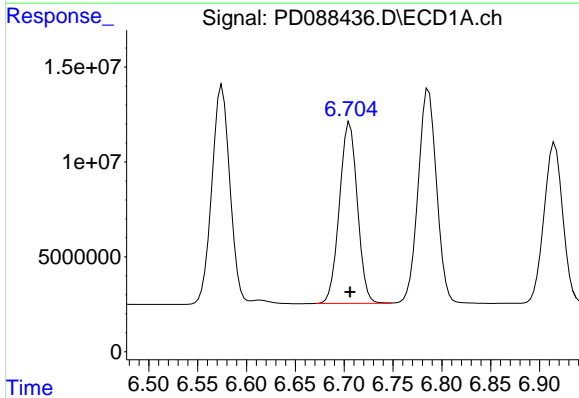
R.T.: 6.786 min
 Delta R.T.: 0.000 min
 Response: 147744384
 Conc: 47.26 ng/ml

Instrument :
 ECD_D
 ClientSampleId :
 PB167914BS



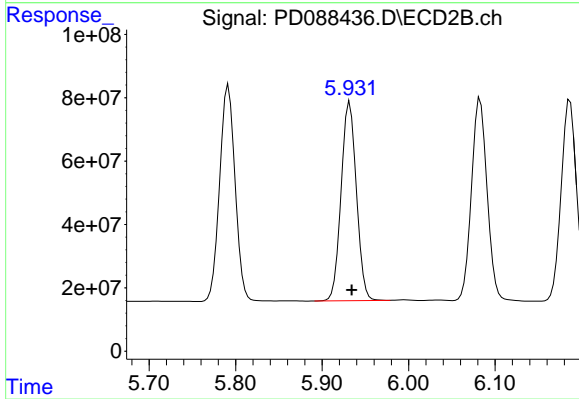
#15 Endosulfan II

R.T.: 6.083 min
 Delta R.T.: -0.002 min
 Response: 806366033
 Conc: 46.02 ng/ml



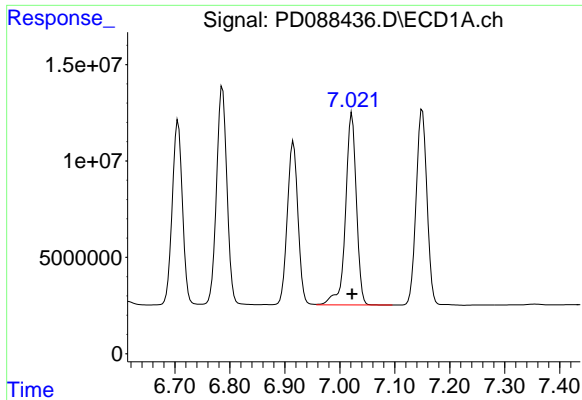
#16 4,4'-DDD

R.T.: 6.706 min
 Delta R.T.: 0.000 min
 Response: 122194735
 Conc: 48.59 ng/ml



#16 4,4'-DDD

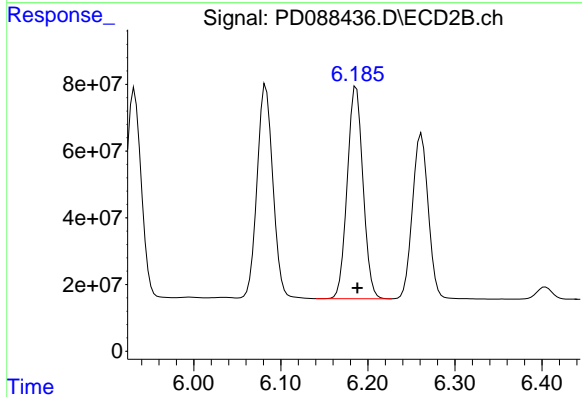
R.T.: 5.932 min
 Delta R.T.: -0.002 min
 Response: 766536514
 Conc: 46.78 ng/ml



#17 4,4'-DDT

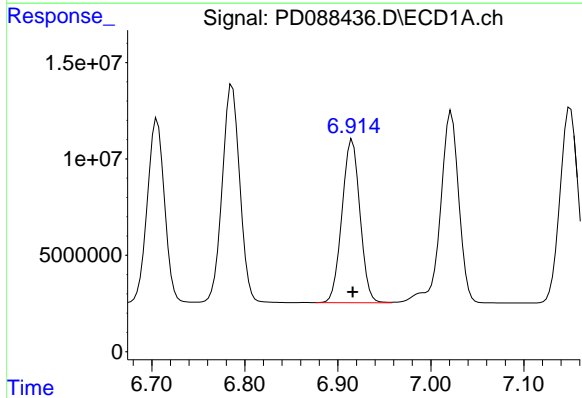
R.T.: 7.022 min
 Delta R.T.: 0.000 min
 Response: 136373692
 Conc: 49.10 ng/ml

Instrument :
 ECD_D
 ClientSampleId :
 PB167914BS



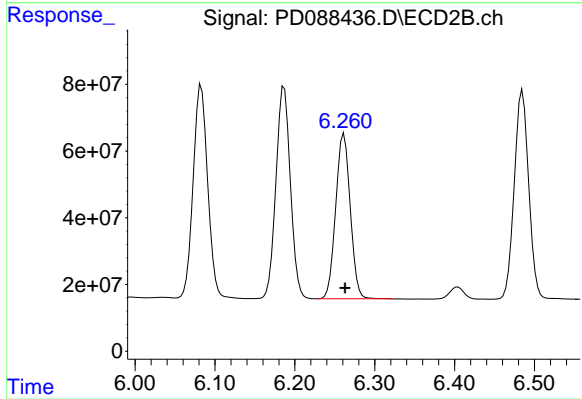
#17 4,4'-DDT

R.T.: 6.187 min
 Delta R.T.: -0.001 min
 Response: 799502847
 Conc: 46.98 ng/ml



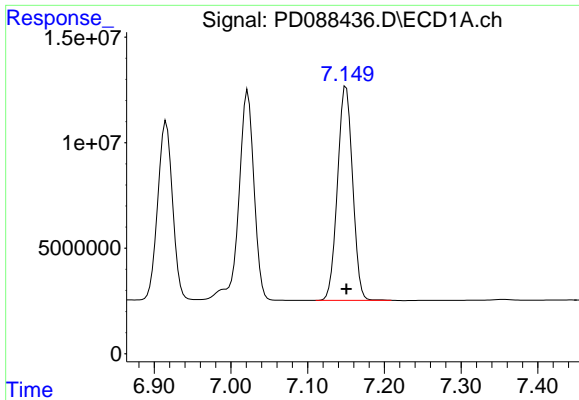
#18 Endrin aldehyde

R.T.: 6.916 min
 Delta R.T.: 0.000 min
 Response: 113549303
 Conc: 49.20 ng/ml



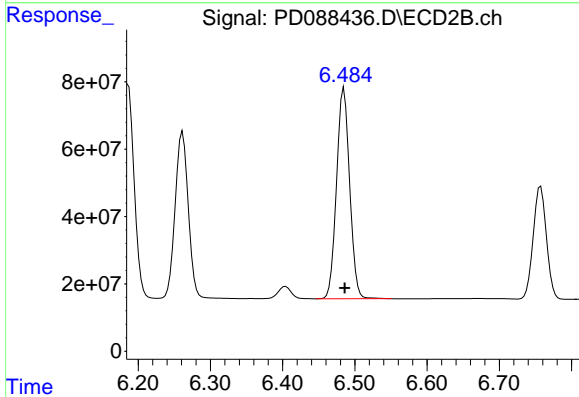
#18 Endrin aldehyde

R.T.: 6.261 min
 Delta R.T.: -0.001 min
 Response: 624938451
 Conc: 46.98 ng/ml

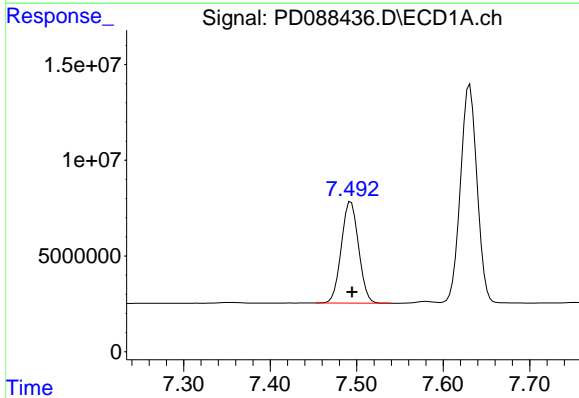


#19 Endosulfan Sulfate
 R.T.: 7.150 min
 Delta R.T.: 0.000 min
 Response: 138932199
 Conc: 48.31 ng/ml

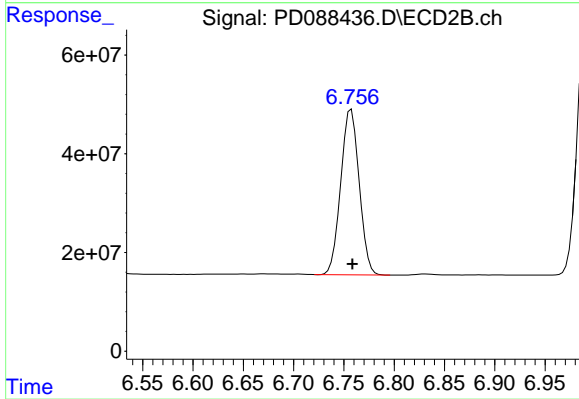
Instrument :
 ECD_D
 ClientSampleId :
 PB167914BS



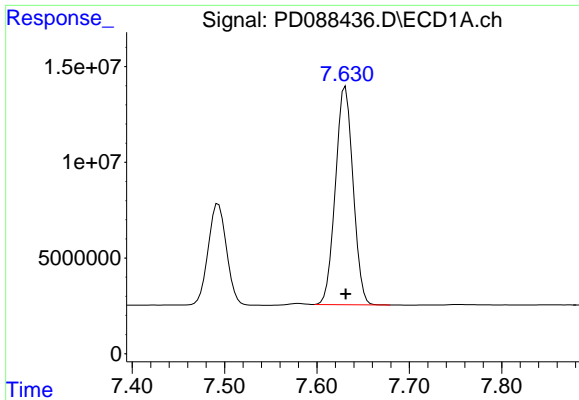
#19 Endosulfan Sulfate
 R.T.: 6.485 min
 Delta R.T.: -0.001 min
 Response: 788924867
 Conc: 46.05 ng/ml



#20 Methoxychlor
 R.T.: 7.493 min
 Delta R.T.: -0.001 min
 Response: 72906502
 Conc: 48.62 ng/ml



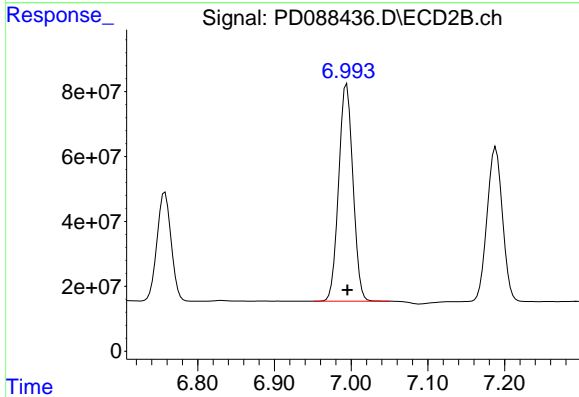
#20 Methoxychlor
 R.T.: 6.757 min
 Delta R.T.: -0.001 min
 Response: 426782304
 Conc: 46.79 ng/ml



#21 Endrin ketone

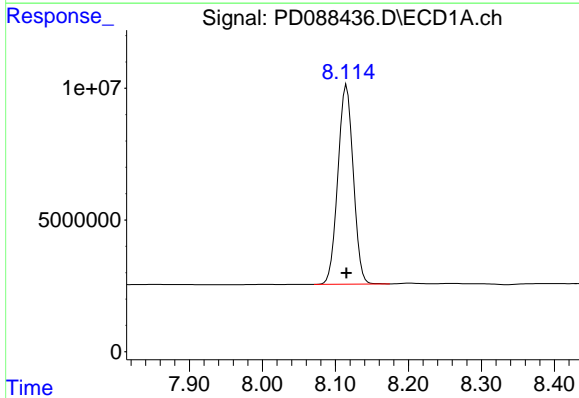
R.T.: 7.631 min
 Delta R.T.: 0.000 min
 Response: 151120000
 Conc: 48.96 ng/ml

Instrument :
 ECD_D
 ClientSampleId :
 PB167914BS



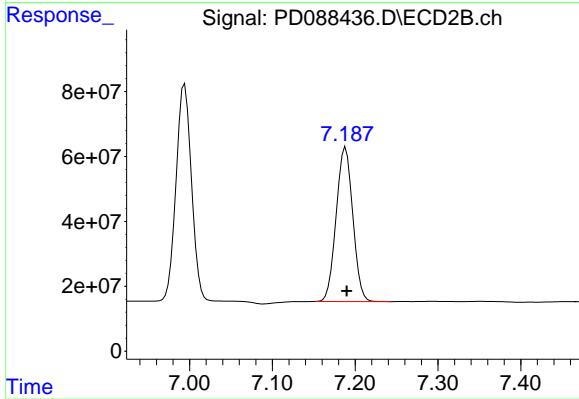
#21 Endrin ketone

R.T.: 6.994 min
 Delta R.T.: 0.000 min
 Response: 866463881
 Conc: 46.32 ng/ml



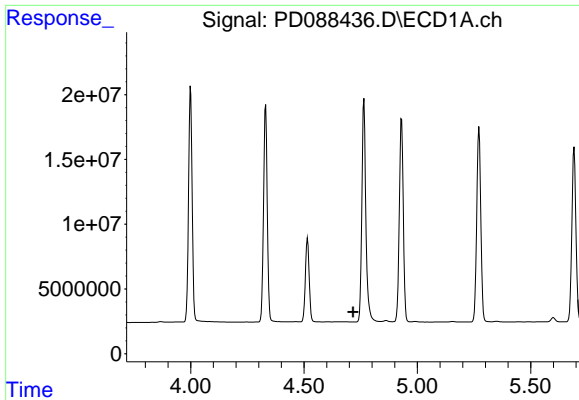
#22 Mirex

R.T.: 8.115 min
 Delta R.T.: 0.000 min
 Response: 110567393
 Conc: 47.08 ng/ml



#22 Mirex

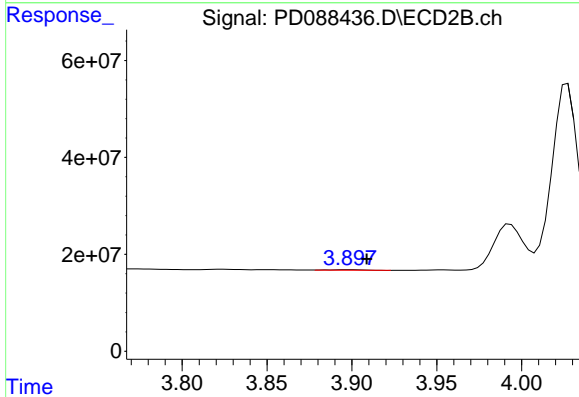
R.T.: 7.188 min
 Delta R.T.: -0.001 min
 Response: 663545769
 Conc: 44.77 ng/ml



#23 Chlordane-1

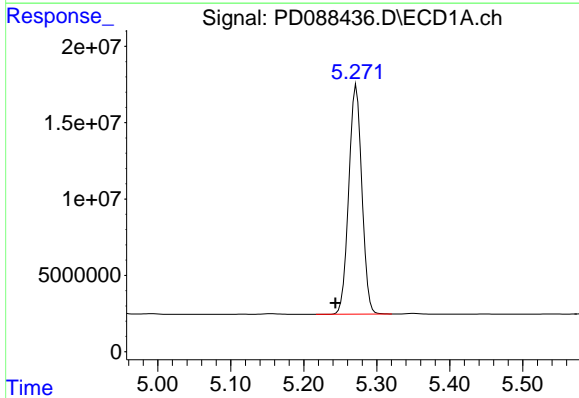
R.T.: 0.000 min
 Exp R.T.: 4.717 min
 Response: 0
 Conc: N.D.

Instrument :
 ECD_D
 ClientSampleId :
 PB167914BS



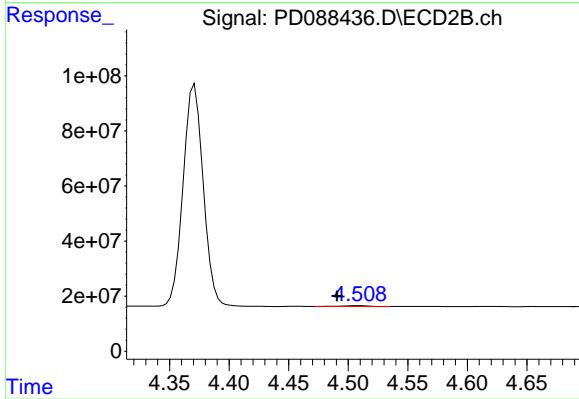
#23 Chlordane-1

R.T.: 3.899 min
 Delta R.T.: -0.010 min
 Response: 1508401
 Conc: 1.88 ng/ml



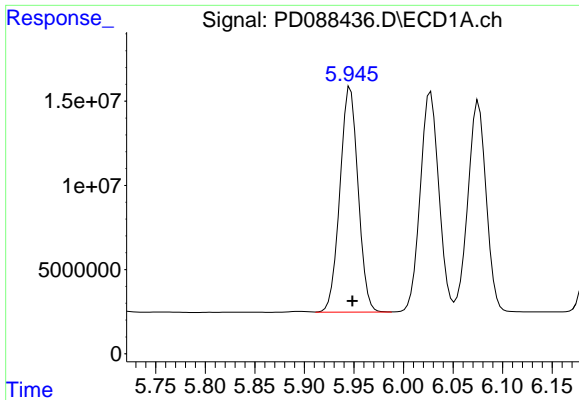
#24 Chlordane-2

R.T.: 5.272 min
 Delta R.T.: 0.029 min
 Response: 186884909
 Conc: 1122.24 ng/ml



#24 Chlordane-2

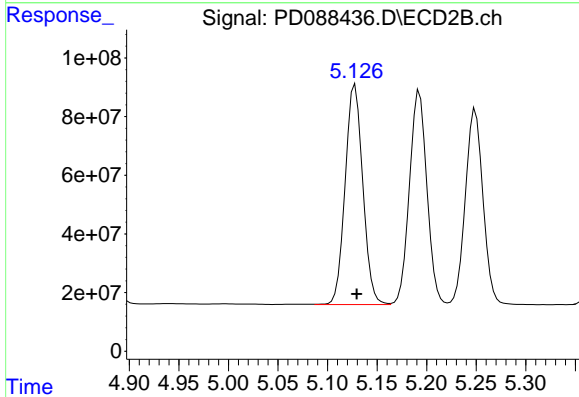
R.T.: 4.509 min
 Delta R.T.: 0.019 min
 Response: 5545117
 Conc: 6.72 ng/ml



#25 Chlordane-3

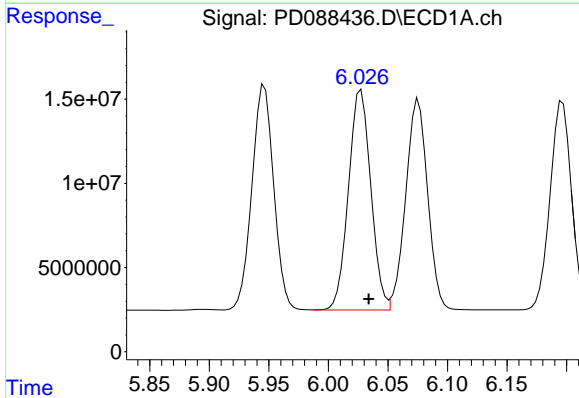
R.T.: 5.946 min
 Delta R.T.: -0.002 min
 Response: 170723637
 Conc: 253.10 ng/ml

Instrument :
 ECD_D
 ClientSampleId :
 PB167914BS



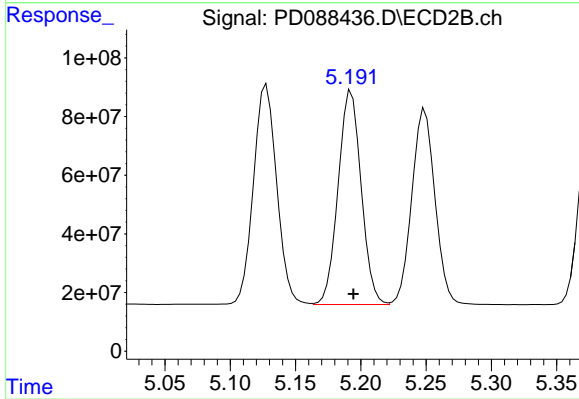
#25 Chlordane-3

R.T.: 5.128 min
 Delta R.T.: -0.002 min
 Response: 930948237
 Conc: 368.10 ng/ml



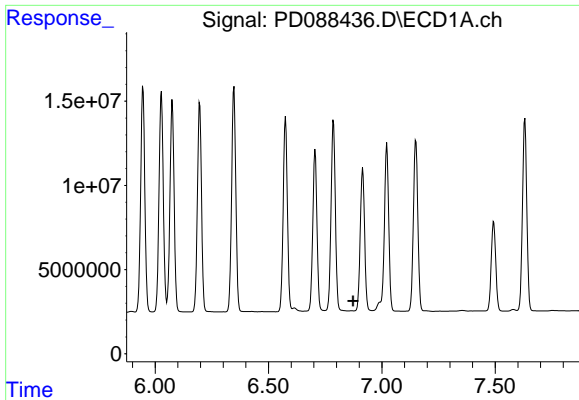
#26 Chlordane-4

R.T.: 6.027 min
 Delta R.T.: -0.006 min
 Response: 171117689
 Conc: 209.88 ng/ml



#26 Chlordane-4

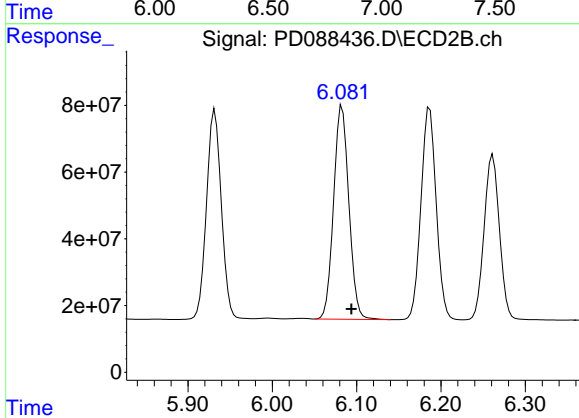
R.T.: 5.193 min
 Delta R.T.: -0.002 min
 Response: 897144374
 Conc: 419.59 ng/ml



#27 Chlordane-5

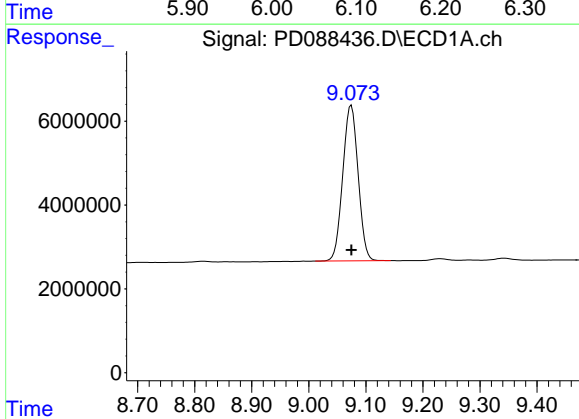
R.T.: 0.000 min
 Exp R.T.: 6.873 min
 Response: 0
 Conc: N.D.

Instrument :
 ECD_D
 ClientSampleId :
 PB167914BS



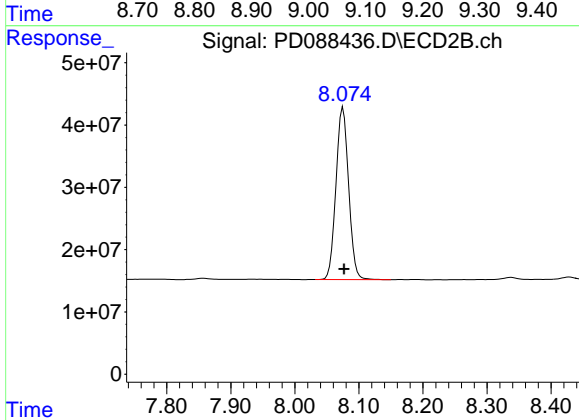
#27 Chlordane-5

R.T.: 6.083 min
 Delta R.T.: -0.011 min
 Response: 806366033
 Conc: 835.16 ng/ml



#28 Decachlorobiphenyl

R.T.: 9.074 min
 Delta R.T.: 0.000 min
 Response: 69432767
 Conc: 20.99 ng/ml



#28 Decachlorobiphenyl

R.T.: 8.075 min
 Delta R.T.: -0.002 min
 Response: 380478337
 Conc: 20.59 ng/ml