

Data Path : Z:\pestpcbsrv\HPCHEM1\ECD_D\Data\PD050825\
 Data File : PD088438.D
 Signal(s) : Signal #1: ECD1A.ch Signal #2: ECD2B.ch
 Acq On : 08 May 2025 17:55
 Operator : AR\AJ
 Sample : Q1956-07
 Misc :
 ALS Vial : 8 Sample Multiplier: 1

Instrument :
 ECD_D
 ClientSampleId :
 FB-05022025

Integration File signal 1: autoint1.e
 Integration File signal 2: autoint2.e
 Quant Time: May 09 02:05:21 2025
 Quant Method : Z:\pestpcbsrv\HPCHEM1\ECD_D\Method\PD041825.M
 Quant Title : GC Extractables
 QLast Update : Sat Apr 19 06:32:27 2025
 Response via : Initial Calibration
 Integrator: ChemStation

Volume Inj. : 1 µl
 Signal #1 Phase : ZB-MR2 Signal #2 Phase: ZB-MR2
 Signal #1 Info : 30M x 0.32mm x0.5 Signal #2 Info : 30M x 0.32mm x 0.25µm

	Compound	RT#1	RT#2	Resp#1	Resp#2	ng/ml	ng/ml

System Monitoring Compounds							
1)	SA Tetrachlo...	3.551	2.882	38488995	281.2E6	19.270	19.232
28)	SA Decachlor...	9.074	8.076	43072737	235.2E6	13.020	12.729
Target Compounds							
3)	MA gamma-BHC...	4.301f	3.731	1046568	6106873	0.250	0.284
5)	MB Aldrin	0.000	4.374	0	1564833	N.D.	0.075 #
6)	B beta-BHC	4.514	0.000	1060147	0	0.653	N.D. #
7)	B delta-BHC	4.779	4.257	11411834	980255	2.767	0.046 #
9)	A Endosulfan I	6.095f	0.000	1591136	0	0.471	N.D. #
10)	B gamma-Chl...	5.924f	5.128	4962764	3638105	1.370	0.179 #
11)	B alpha-Chl...	6.022	5.214f	4041351	24778186	1.120	1.264
12)	B 4,4'-DDE	0.000	5.372	0	1237548	N.D.	0.063 #
14)	MA Endrin	0.000	5.792	0	7619112	N.D.	0.419 #
15)	B Endosulfa...	6.772f	6.069f	954662	2156052	0.305	0.123 #
16)	A 4,4'-DDD	6.738f	5.936	247417	1912319	0.098	0.117
17)	MA 4,4'-DDT	0.000	6.190	0	316942	N.D.	0.019 #
18)	B Endrin al...	6.913	6.272	1350144	1784016	0.585	0.134 #
19)	B Endosulfa...	7.171f	6.481	387288	452512	0.135	0.026 #
21)	B Endrin ke...	0.000	6.993	0	435950	N.D.	0.023 #
22)	Mirex	0.000	7.207f	0	50217980	N.D.	3.388 #
23)	Chlordane-1	0.000	3.908	0	4464646	N.D.	5.569 #
24)	Chlordane-2	0.000	4.452f	0	763159	N.D.	0.925 #
25)	Chlordane-3	5.924f	5.128	4962764	3638105	7.357	1.439 #
26)	Chlordane-4	6.022	5.214	4041351	24778186	4.957	11.589 #
27)	Chlordane-5	0.000	6.104	0	3173830	N.D.	3.287 #

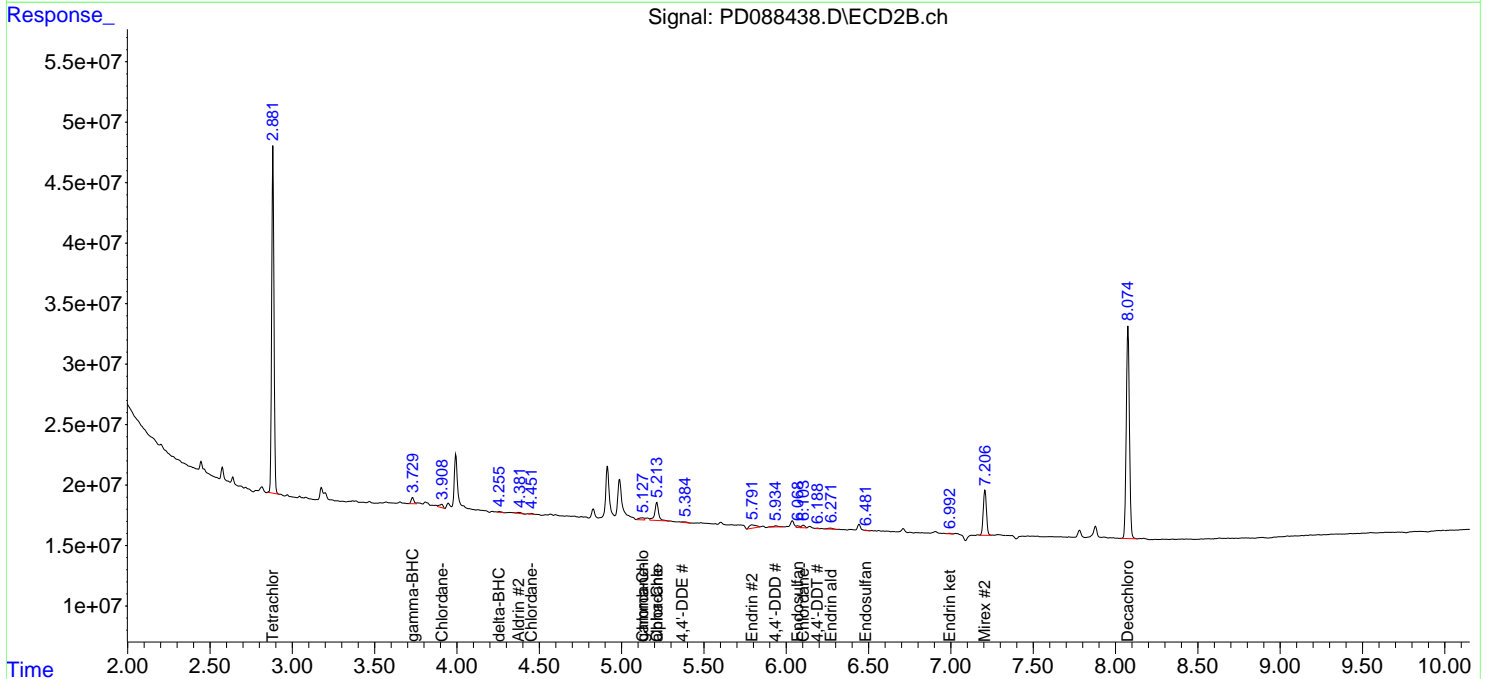
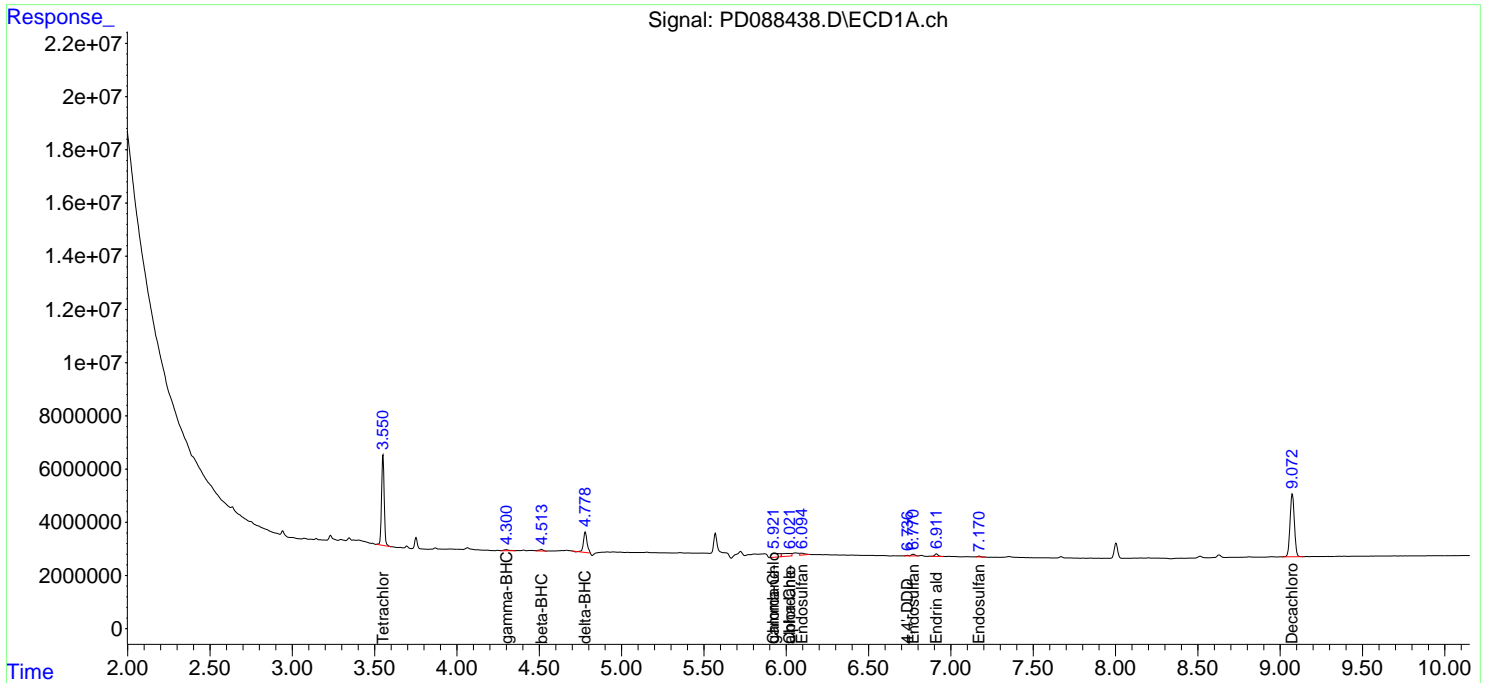
(f)=RT Delta > 1/2 Window (#)=Amounts differ by > 25% (m)=manual int.

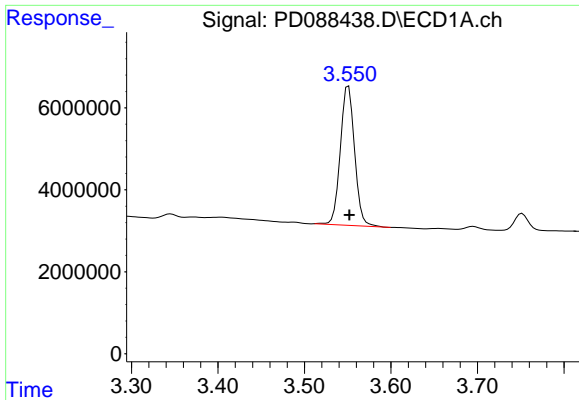
Data Path : Z:\pestpcbsrv\HPCHEM1\ECD_D\Data\PD050825\
 Data File : PD088438.D
 Signal(s) : Signal #1: ECD1A.ch Signal #2: ECD2B.ch
 Acq On : 08 May 2025 17:55
 Operator : AR\AJ
 Sample : Q1956-07
 Misc :
 ALS Vial : 8 Sample Multiplier: 1

Instrument :
 ECD_D
 ClientSampleId :
 FB-05022025

Integration File signal 1: autoint1.e
 Integration File signal 2: autoint2.e
 Quant Time: May 09 02:05:21 2025
 Quant Method : Z:\pestpcbsrv\HPCHEM1\ECD_D\Method\PD041825.M
 Quant Title : GC Extractables
 QLast Update : Sat Apr 19 06:32:27 2025
 Response via : Initial Calibration
 Integrator: ChemStation

Volume Inj. : 1 µl
 Signal #1 Phase : ZB-MR1 Signal #2 Phase: ZB-MR2
 Signal #1 Info : 30M x 0.32mm x0.5 Signal #2 Info : 30M x 0.32mm x 0.25µm

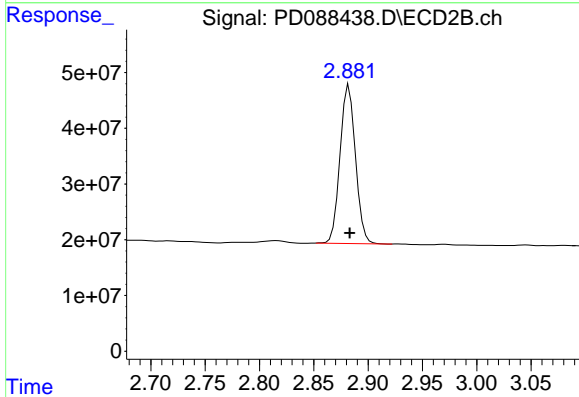




#1 Tetrachloro-m-xylene

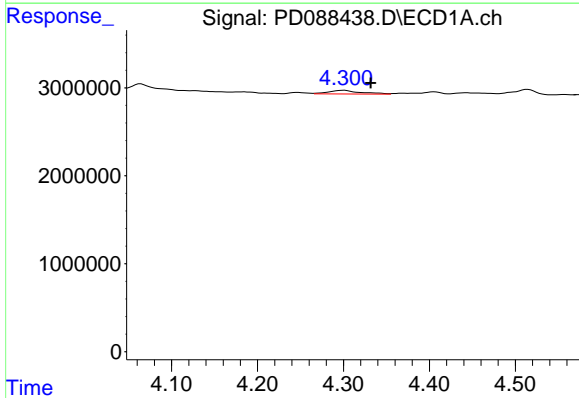
R.T.: 3.551 min
 Delta R.T.: -0.001 min
 Response: 38488995
 Conc: 19.27 ng/ml

Instrument :
 ECD_D
 ClientSampleId :
 FB-05022025



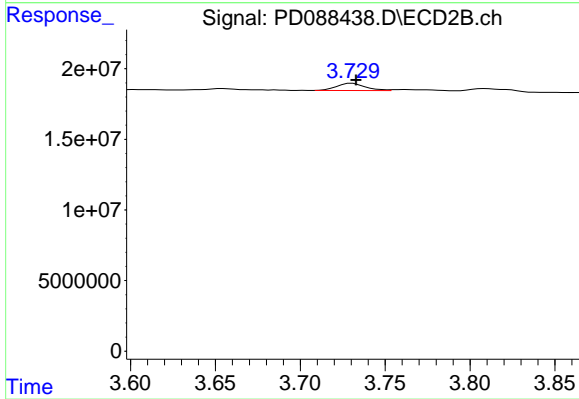
#1 Tetrachloro-m-xylene

R.T.: 2.882 min
 Delta R.T.: 0.000 min
 Response: 281201108
 Conc: 19.23 ng/ml



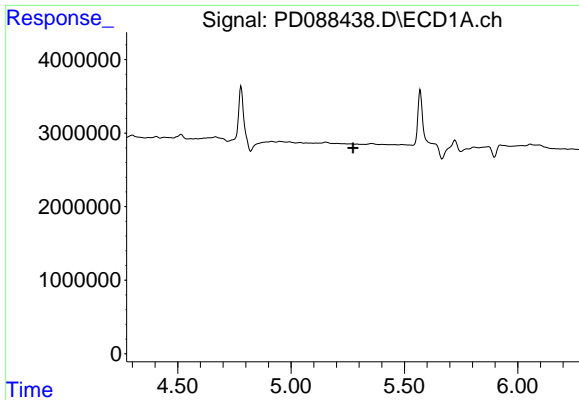
#3 gamma-BHC (Lindane)

R.T.: 4.301 min
 Delta R.T.: -0.031 min
 Response: 1046568
 Conc: 0.25 ng/ml



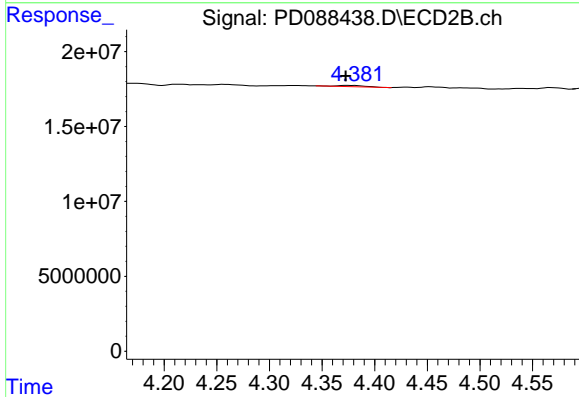
#3 gamma-BHC (Lindane)

R.T.: 3.731 min
 Delta R.T.: -0.002 min
 Response: 6106873
 Conc: 0.28 ng/ml

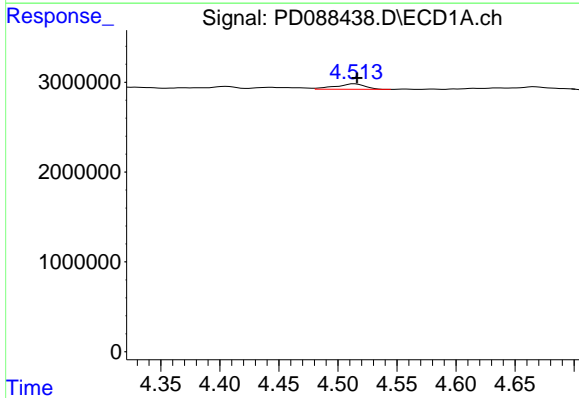


#5 Aldrin
 R.T.: 0.000 min
 Exp R.T.: 5.273 min
 Response: 0
 Conc: N.D.

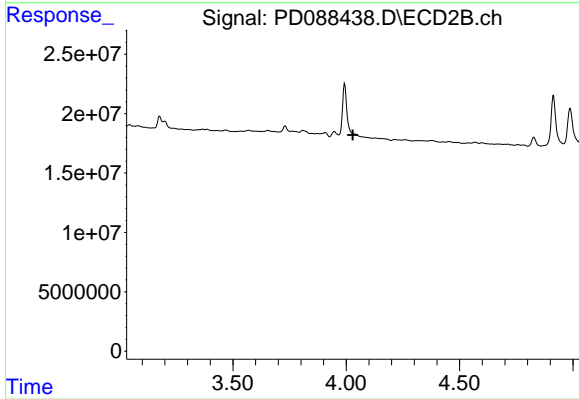
Instrument :
 ECD_D
 ClientSampleId :
 FB-05022025



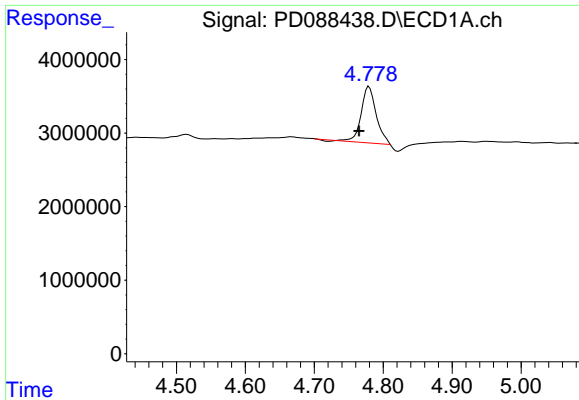
#5 Aldrin
 R.T.: 4.374 min
 Delta R.T.: 0.001 min
 Response: 1564833
 Conc: 0.08 ng/ml



#6 beta-BHC
 R.T.: 4.514 min
 Delta R.T.: -0.002 min
 Response: 1060147
 Conc: 0.65 ng/ml



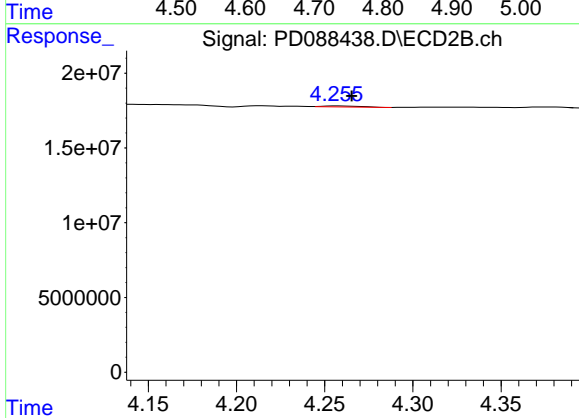
#6 beta-BHC
 R.T.: 0.000 min
 Exp R.T.: 4.028 min
 Response: 0
 Conc: N.D.



#7 delta-BHC

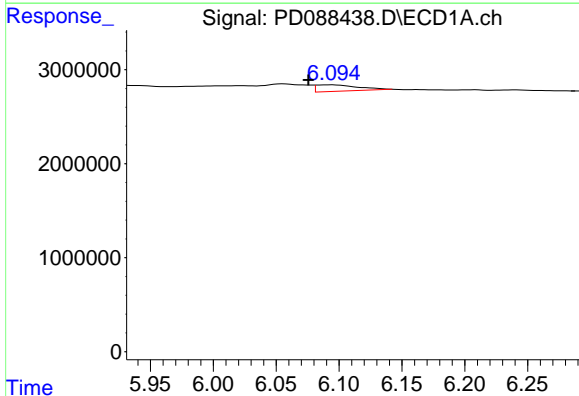
R.T.: 4.779 min
 Delta R.T.: 0.014 min
 Response: 11411834
 Conc: 2.77 ng/ml

Instrument :
 ECD_D
 ClientSampleId :
 FB-05022025



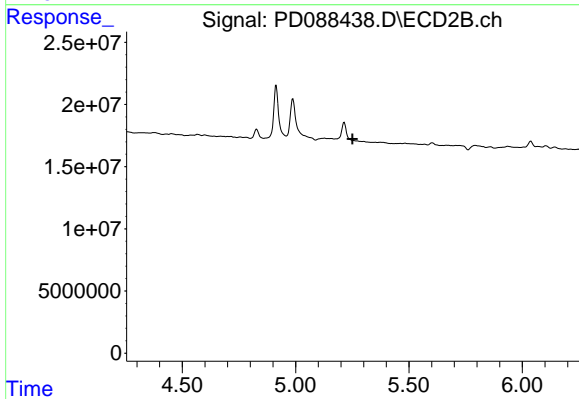
#7 delta-BHC

R.T.: 4.257 min
 Delta R.T.: -0.008 min
 Response: 980255
 Conc: 0.05 ng/ml



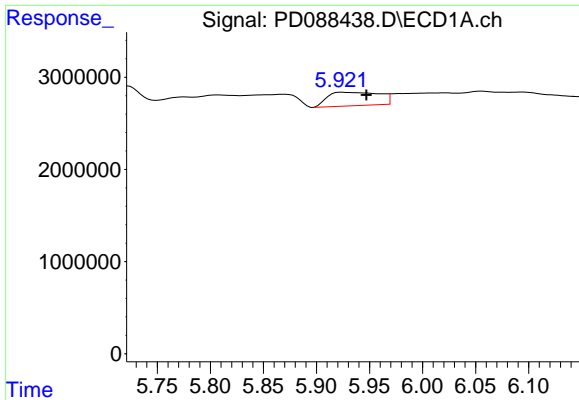
#9 Endosulfan I

R.T.: 6.095 min
 Delta R.T.: 0.019 min
 Response: 1591136
 Conc: 0.47 ng/ml



#9 Endosulfan I

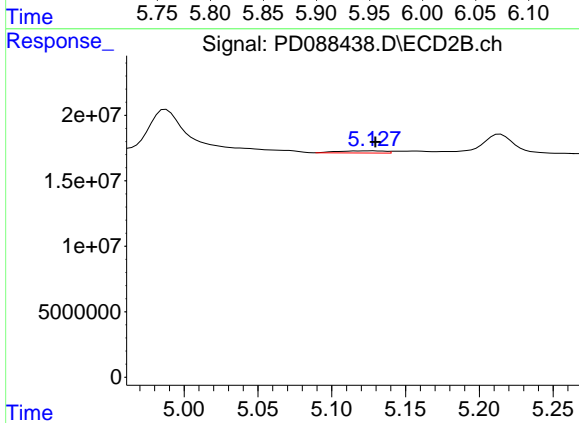
R.T.: 0.000 min
 Exp R.T. : 5.251 min
 Response: 0
 Conc: N.D.



#10 gamma-Chlordane

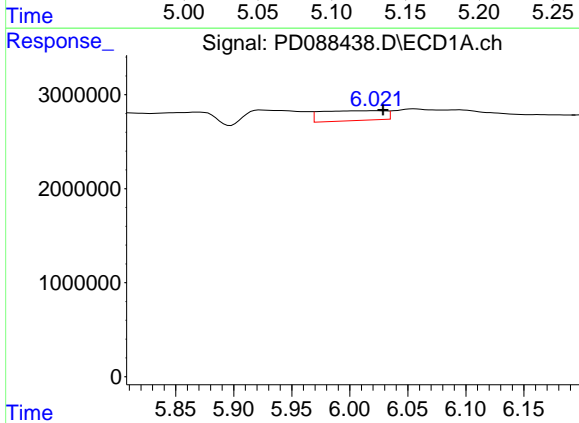
R.T.: 5.924 min
 Delta R.T.: -0.024 min
 Response: 4962764
 Conc: 1.37 ng/ml

Instrument :
 ECD_D
 ClientSampleId :
 FB-05022025



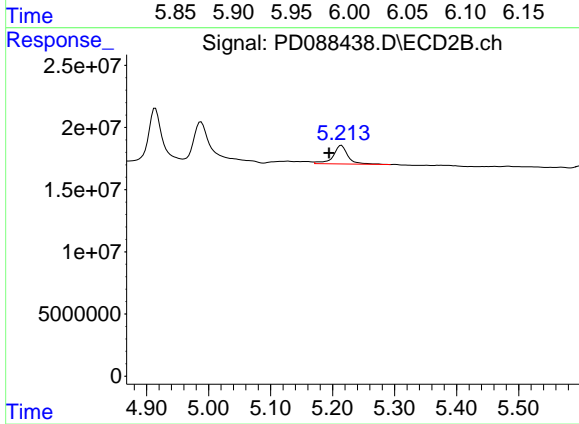
#10 gamma-Chlordane

R.T.: 5.128 min
 Delta R.T.: -0.001 min
 Response: 3638105
 Conc: 0.18 ng/ml



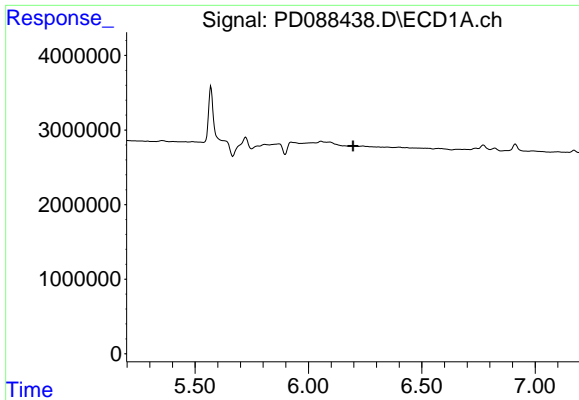
#11 alpha-Chlordane

R.T.: 6.022 min
 Delta R.T.: -0.006 min
 Response: 4041351
 Conc: 1.12 ng/ml



#11 alpha-Chlordane

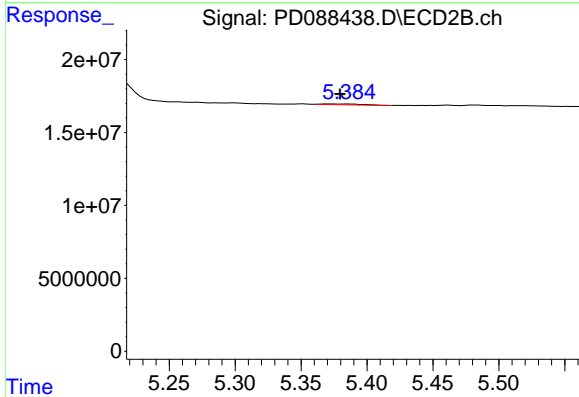
R.T.: 5.214 min
 Delta R.T.: 0.020 min
 Response: 24778186
 Conc: 1.26 ng/ml



#12 4,4'-DDE

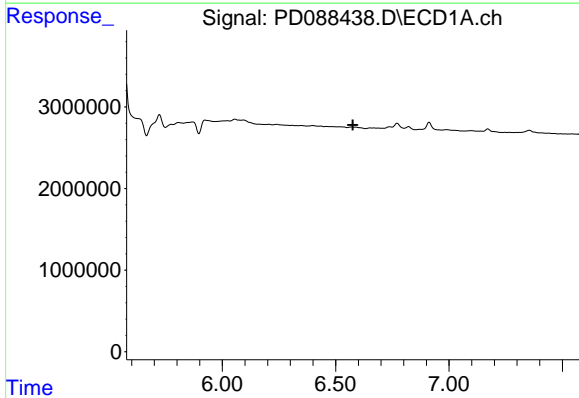
R.T.: 0.000 min
 Exp R.T.: 6.197 min
 Response: 0
 Conc: N.D.

Instrument :
 ECD_D
 ClientSampleId :
 FB-05022025



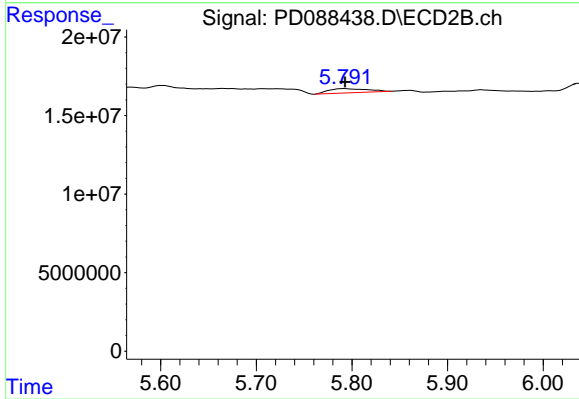
#12 4,4'-DDE

R.T.: 5.372 min
 Delta R.T.: -0.007 min
 Response: 1237548
 Conc: 0.06 ng/ml



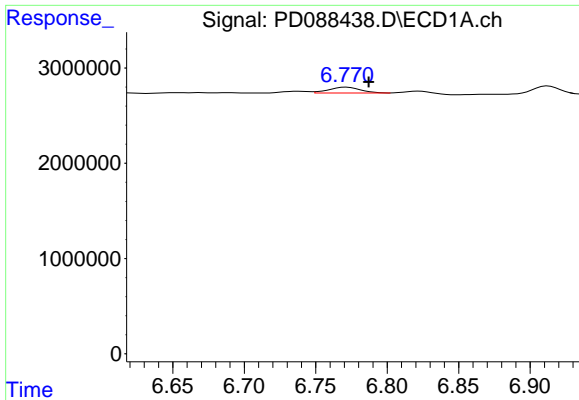
#14 Endrin

R.T.: 0.000 min
 Exp R.T.: 6.576 min
 Response: 0
 Conc: N.D.



#14 Endrin

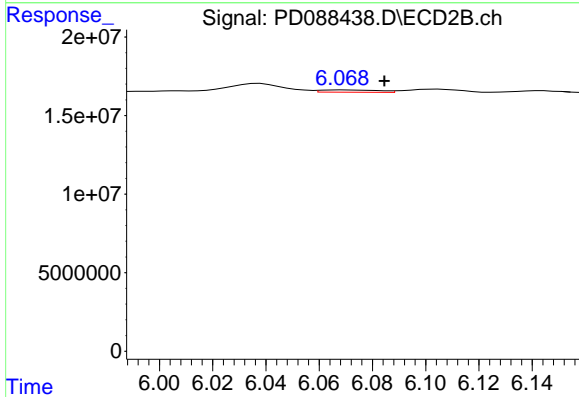
R.T.: 5.792 min
 Delta R.T.: 0.000 min
 Response: 7619112
 Conc: 0.42 ng/ml



#15 Endosulfan II

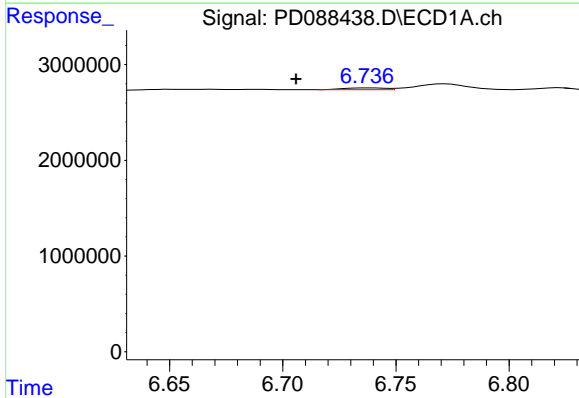
R.T.: 6.772 min
 Delta R.T.: -0.015 min
 Response: 954662
 Conc: 0.31 ng/ml

Instrument :
 ECD_D
 ClientSampleId :
 FB-05022025



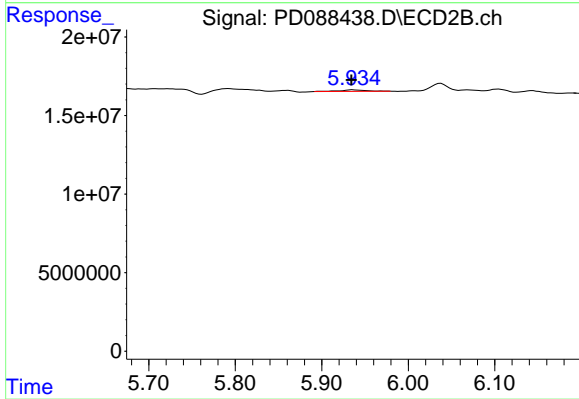
#15 Endosulfan II

R.T.: 6.069 min
 Delta R.T.: -0.015 min
 Response: 2156052
 Conc: 0.12 ng/ml



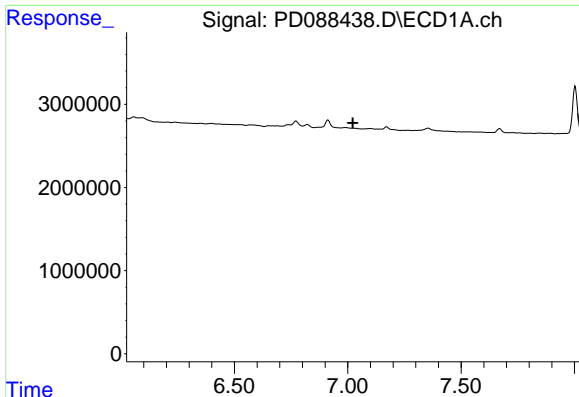
#16 4,4'-DDD

R.T.: 6.738 min
 Delta R.T.: 0.032 min
 Response: 247417
 Conc: 0.10 ng/ml



#16 4,4'-DDD

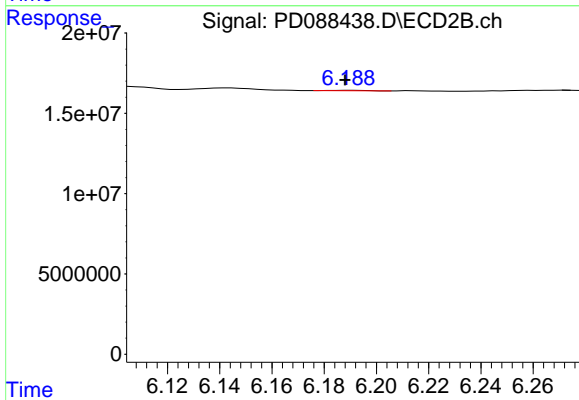
R.T.: 5.936 min
 Delta R.T.: 0.002 min
 Response: 1912319
 Conc: 0.12 ng/ml



#17 4,4'-DDT

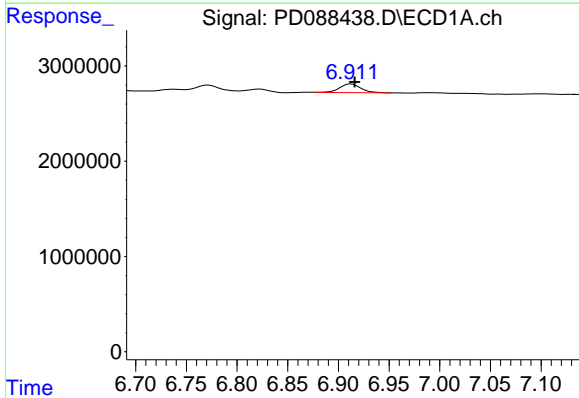
R.T.: 0.000 min
 Exp R.T.: 7.022 min
 Response: 0
 Conc: N.D.

Instrument :
 ECD_D
 ClientSampleId :
 FB-05022025



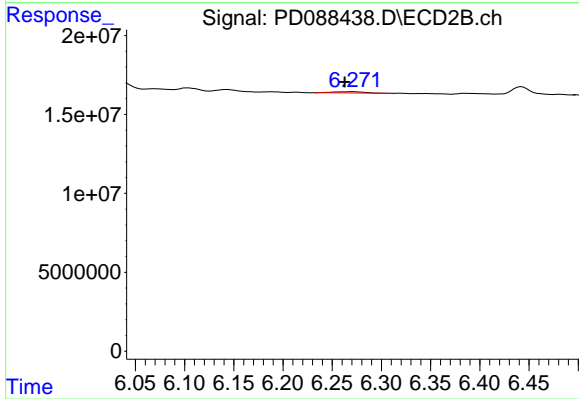
#17 4,4'-DDT

R.T.: 6.190 min
 Delta R.T.: 0.002 min
 Response: 316942
 Conc: 0.02 ng/ml



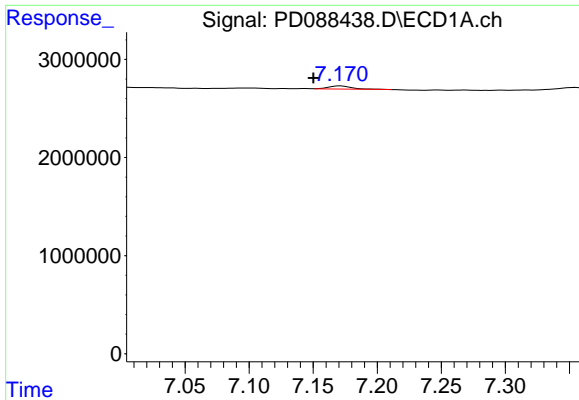
#18 Endrin aldehyde

R.T.: 6.913 min
 Delta R.T.: -0.003 min
 Response: 1350144
 Conc: 0.58 ng/ml



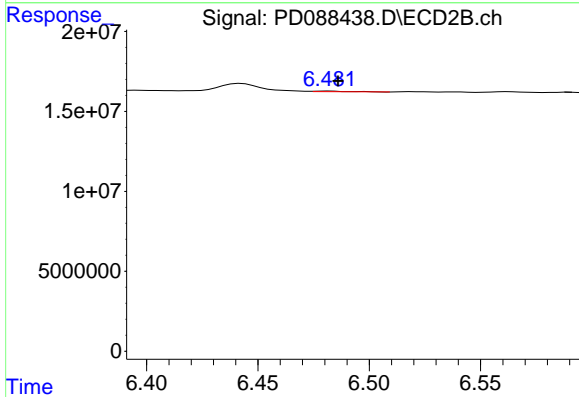
#18 Endrin aldehyde

R.T.: 6.272 min
 Delta R.T.: 0.009 min
 Response: 1784016
 Conc: 0.13 ng/ml

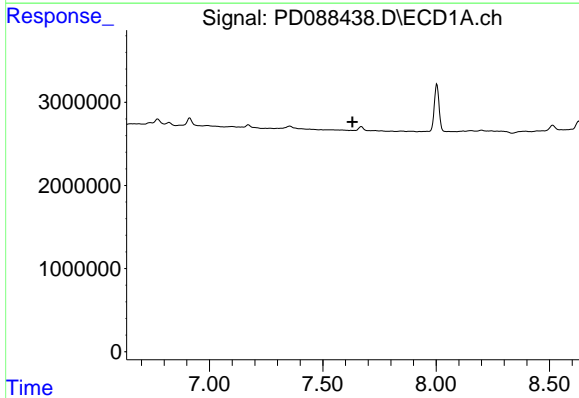


#19 Endosulfan Sulfate
 R.T.: 7.171 min
 Delta R.T.: 0.021 min
 Response: 387288
 Conc: 0.13 ng/ml

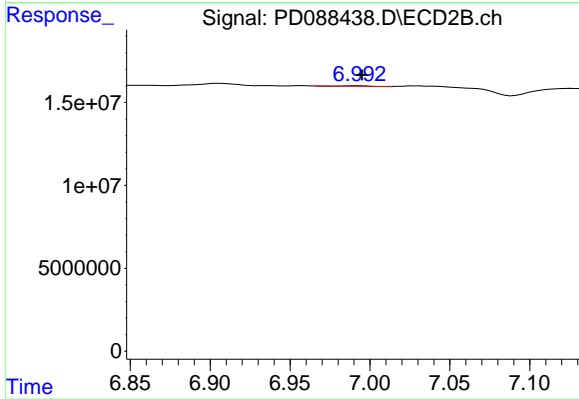
Instrument :
 ECD_D
 ClientSampleId :
 FB-05022025



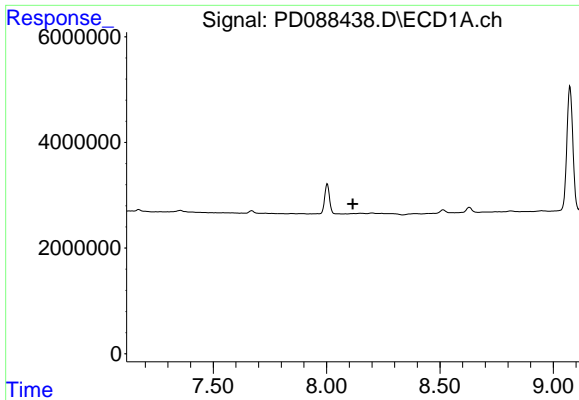
#19 Endosulfan Sulfate
 R.T.: 6.481 min
 Delta R.T.: -0.005 min
 Response: 452512
 Conc: 0.03 ng/ml



#21 Endrin ketone
 R.T.: 0.000 min
 Exp R.T. : 7.631 min
 Response: 0
 Conc: N.D.

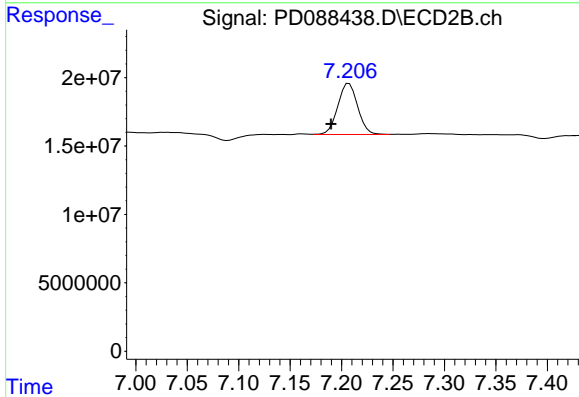


#21 Endrin ketone
 R.T.: 6.993 min
 Delta R.T.: -0.002 min
 Response: 435950
 Conc: 0.02 ng/ml

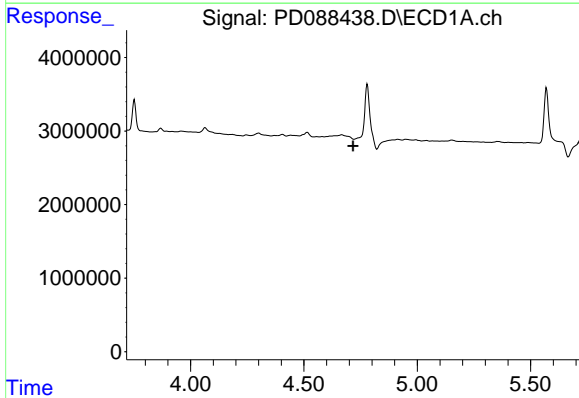


#22 Mirex
 R.T.: 0.000 min
 Exp R.T.: 8.115 min
 Response: 0
 Conc: N.D.

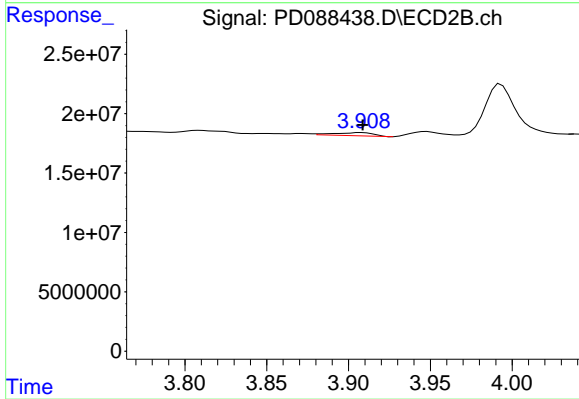
Instrument :
 ECD_D
 ClientSampleId :
 FB-05022025



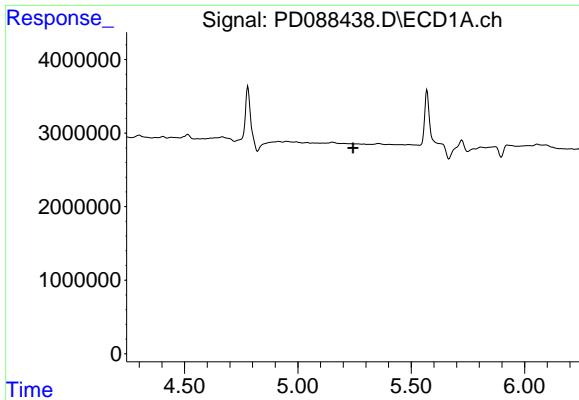
#22 Mirex
 R.T.: 7.207 min
 Delta R.T.: 0.018 min
 Response: 50217980
 Conc: 3.39 ng/ml



#23 Chlordane-1
 R.T.: 0.000 min
 Exp R.T.: 4.717 min
 Response: 0
 Conc: N.D.



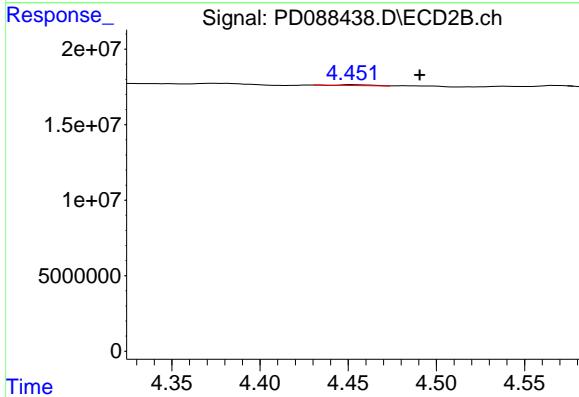
#23 Chlordane-1
 R.T.: 3.908 min
 Delta R.T.: 0.000 min
 Response: 4464646
 Conc: 5.57 ng/ml



#24 Chlordane-2

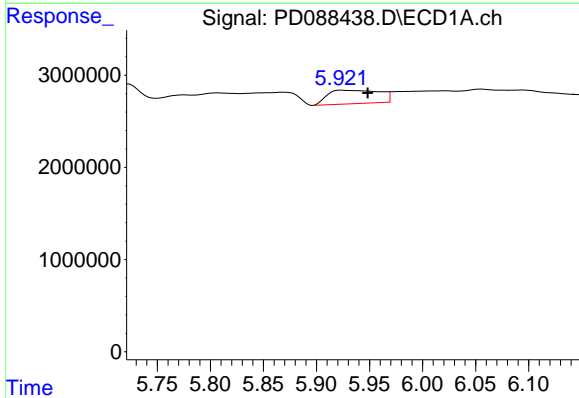
R.T.: 0.000 min
 Exp R.T.: 5.243 min
 Response: 0
 Conc: N.D.

Instrument :
 ECD_D
 ClientSampleId :
 FB-05022025



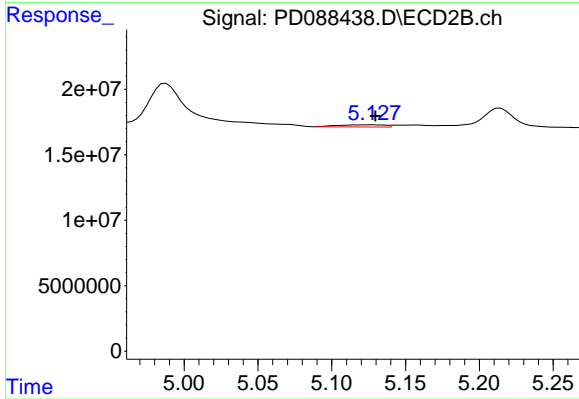
#24 Chlordane-2

R.T.: 4.452 min
 Delta R.T.: -0.038 min
 Response: 763159
 Conc: 0.92 ng/ml



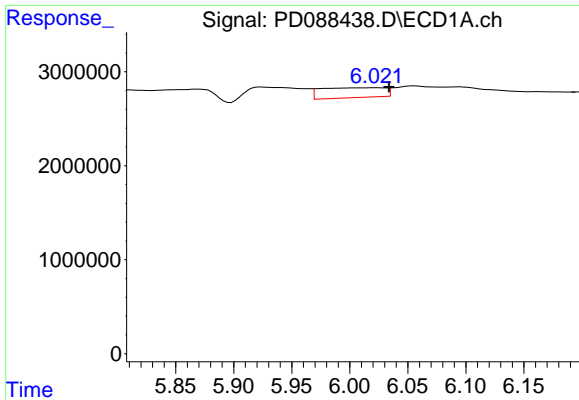
#25 Chlordane-3

R.T.: 5.924 min
 Delta R.T.: -0.025 min
 Response: 4962764
 Conc: 7.36 ng/ml



#25 Chlordane-3

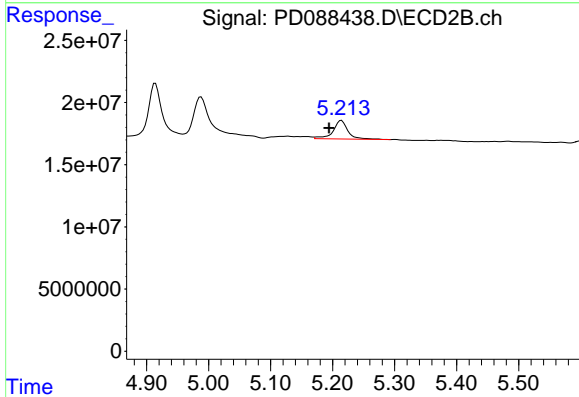
R.T.: 5.128 min
 Delta R.T.: -0.001 min
 Response: 3638105
 Conc: 1.44 ng/ml



#26 Chlordane-4

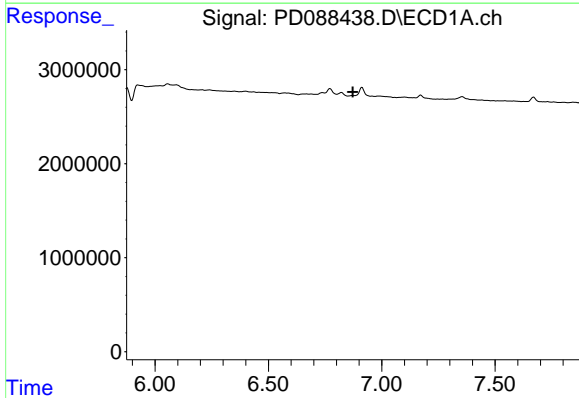
R.T.: 6.022 min
 Delta R.T.: -0.012 min
 Response: 4041351
 Conc: 4.96 ng/ml

Instrument :
 ECD_D
 ClientSampleId :
 FB-05022025



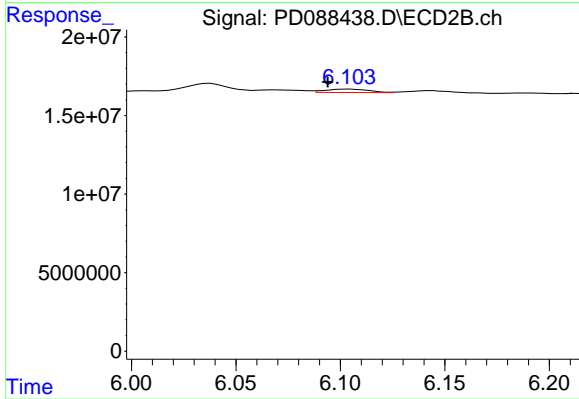
#26 Chlordane-4

R.T.: 5.214 min
 Delta R.T.: 0.020 min
 Response: 24778186
 Conc: 11.59 ng/ml



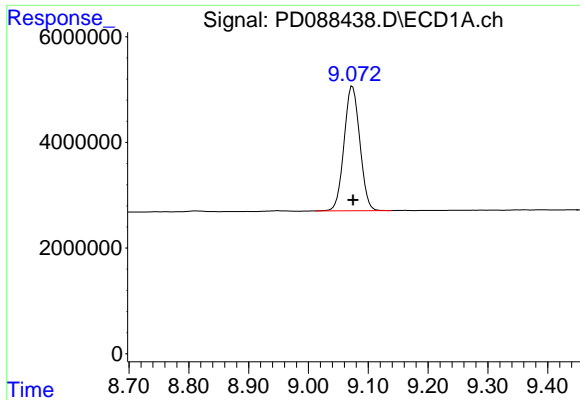
#27 Chlordane-5

R.T.: 0.000 min
 Exp R.T. : 6.873 min
 Response: 0
 Conc: N.D.



#27 Chlordane-5

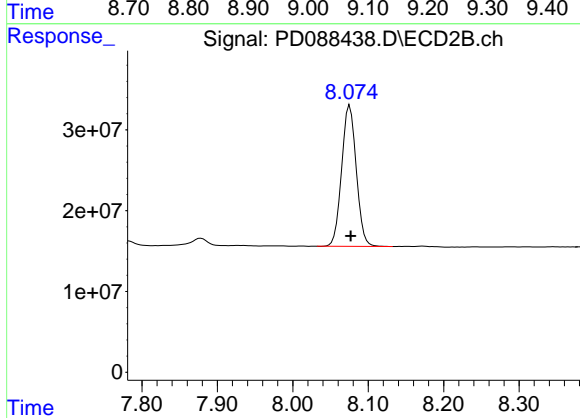
R.T.: 6.104 min
 Delta R.T.: 0.010 min
 Response: 3173830
 Conc: 3.29 ng/ml



#28 Decachlorobiphenyl

R.T.: 9.074 min
Delta R.T.: -0.001 min
Response: 43072737
Conc: 13.02 ng/ml

Instrument :
ECD_D
ClientSampleId :
FB-05022025



#28 Decachlorobiphenyl

R.T.: 8.076 min
Delta R.T.: -0.001 min
Response: 235223570
Conc: 12.73 ng/ml