

Data Path : Z:\pestpcbsrv\HPCHEM1\ECD\_D\Data\PD051023\  
 Data File : PD075399.D  
 Signal(s) : Signal #1: ECD1A.ch Signal #2: ECD2B.ch  
 Acq On : 10 May 2023 18:51  
 Operator : AR\AJ  
 Sample : PEM078  
 Misc :  
 ALS Vial : 3 Sample Multiplier: 1

**Instrument :**  
 ECD\_D  
**ClientSampleId :**  
 PEM089

**Manual Integrations**  
**APPROVED**  
 Reviewed By :Yogesh Patel 05/16/2023  
 Supervised By :Ankita Jodhani 05/16/2023

Integration File signal 1: autoint1.e  
 Integration File signal 2: autoint2.e  
 Quant Time: May 11 08:08:41 2023  
 Quant Method : Z:\pestpcbsrv\HPCHEM1\ECD\_D\Method\PD050323CLP.M  
 Quant Title : GC Extractables  
 QLast Update : Thu May 04 02:14:07 2023  
 Response via : Initial Calibration  
 Integrator: ChemStation

Volume Inj. : 1 µl  
 Signal #1 Phase : ZB-MR1 Signal #2 Phase: ZB-MR2  
 Signal #1 Info : 30M x 0.32mm x0.5 Signal #2 Info : 30M x 0.32mm x 0.25µm

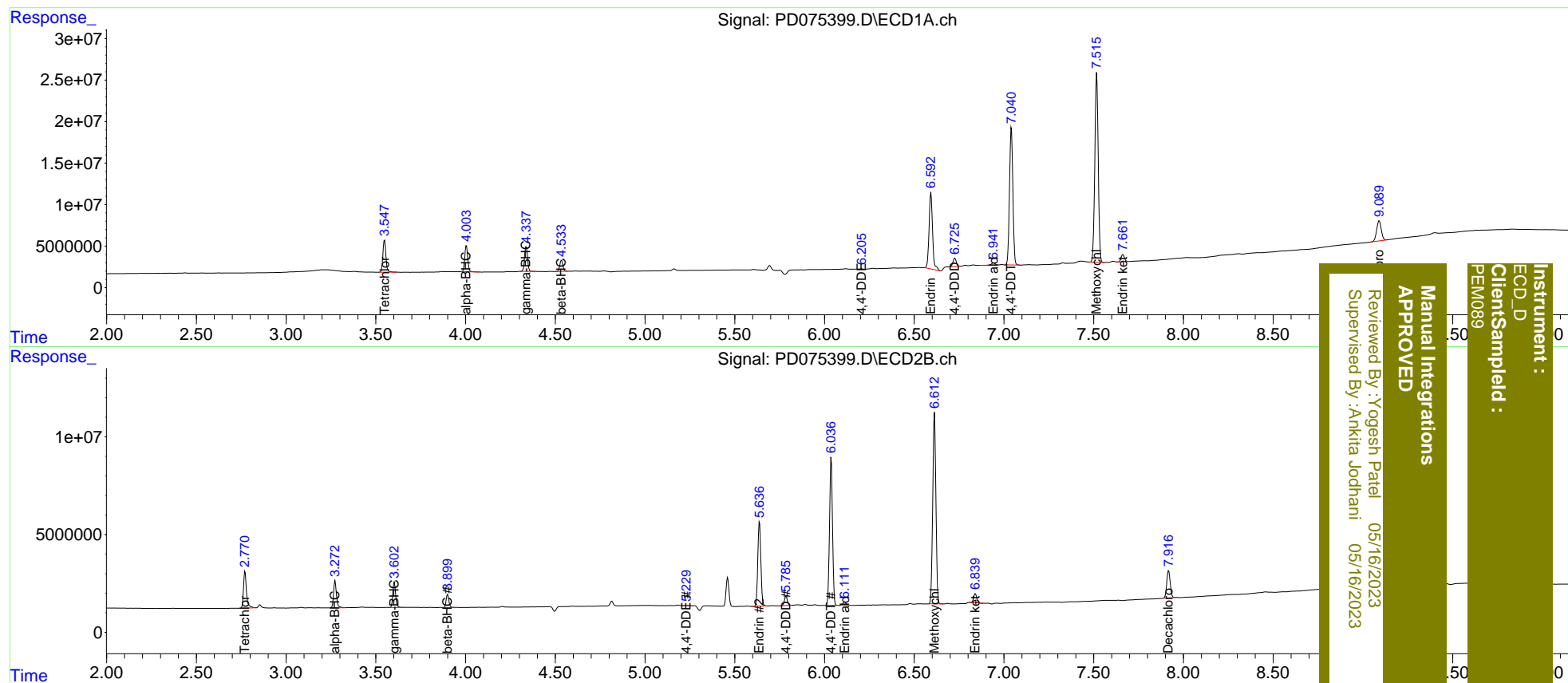
Compound	RT#1	RT#2	Resp#1	Resp#2	ng/ml	ng/ml
-----						
System Monitoring Compounds						
1) SA Tetrachlo...	3.549	2.771	45687211	21611769	20.031	20.490
27) SA Decachlor...	9.091	7.918	43315339	18725661	17.503	19.828
Target Compounds						
2) A alpha-BHC	4.005	3.273	36480200	15336132	9.486	9.901
3) MA gamma-BHC...	4.338	3.603	34371935	14333712	9.561	9.751
6) B beta-BHC	4.535	3.900	15655913	7141495	9.538	9.808
12) B 4,4'-DDE	6.207	5.229	735779	145737	0.225	0.113m#
14) MA Endrin	6.593	5.638	123.9E6	50706631	42.830	41.689
16) A 4,4'-DDD	6.726	5.786	13061536	5523249	5.405	5.571
17) MA 4,4'-DDT	7.041	6.038	214.4E6	87781532	84.477	87.096
18) B Endrin al...	6.942	6.112	3272605	2104592	1.383	2.073 #
20) A Methoxychlor	7.517	6.613	299.9E6	120.0E6	204.142	209.555
21) B Endrin ke...	7.663	6.841	10869804	5325497	3.586	4.039

(f)=RT Delta > 1/2 Window (#)=Amounts differ by > 25% (m)=manual int.

Data Path : Z:\pestpcbsrv\HPCHEM1\ECD\_D\Data\PD051023\  
 Data File : PD075399.D  
 Signal(s) : Signal #1: ECD1A.ch Signal #2: ECD2B.ch  
 Acq On : 10 May 2023 18:51  
 Operator : AR\AJ  
 Sample : PEM078  
 Misc :  
 ALS Vial : 3 Sample Multiplier: 1

Integration File signal 1: autoint1.e  
 Integration File signal 2: autoint2.e  
 Quant Time: May 11 08:08:41 2023  
 Quant Method : Z:\pestpcbsrv\HPCHEM1\ECD\_D\Method\PD050323CLP.M  
 Quant Title : GC Extractables  
 QLast Update : Thu May 04 02:14:07 2023  
 Response via : Initial Calibration  
 Integrator: ChemStation

Volume Inj. : 1 µl  
 Signal #1 Phase : ZB-MR1 Signal #2 Phase: ZB-MR2  
 Signal #1 Info : 30M x 0.32mm x0.5 Signal #2 Info : 30M x 0.32mm x 0.25µm



Instrument :  
 ECD\_D  
 Client/Sample :  
 PEM089

Manual Integrations  
 APPROVED

Reviewed By : Yogesh Patel 05/16/2023  
 Supervised By : Ankita Jodhani 05/16/2023