

Data Path : Z:\pestpcbsrv\HPCHEM1\ECD_D\Data\PD051220\
 Data File : PD057882.D
 Signal(s) : Signal #1: ECD1A.ch Signal #2: ECD2B.ch
 Acq On : 12 May 2020 12:01
 Operator : AJ\MA
 Sample : PEM
 Misc :
 ALS Vial : 3 Sample Multiplier: 1

Instrument :
 ECD_D
 ClientSampleId :

Integration File signal 1: autoint1.e
 Integration File signal 2: autoint2.e
 Quant Time: May 12 12:25:34 2020
 Quant Method : Z:\pestpcbsrv\HPCHEM1\ECD_D\Method\PD051220.M
 Quant Title : GC Extractables
 QLast Update : Tue May 12 12:00:03 2020
 Response via : Initial Calibration
 Integrator: ChemStation

Volume Inj. : 2 µl
 Signal #1 Phase : ZB-MR2 Signal #2 Phase: ZB-MR1
 Signal #1 Info : 30M x 0.32mm x0.2 Signal #2 Info : 30M x 0.32mm x 0.50µm

Compound	RT#1	RT#2	Resp#1	Resp#2	ng/ml	ng/ml

System Monitoring Compounds						
1) SA Tetrachlo...	3.228	3.895	17695747	24408621	20.425	20.750
2) SA Decachlor...	7.873	8.901	19122292	25128905	21.223	22.052
Target Compounds						
2) A alpha-BHC	3.651	4.279	12258883	16556430	9.055	9.244
3) MA gamma-BHC...	3.923	4.560	13011621	15969935	9.418	9.321
5) MB Aldrin	4.452	0.000	157970	0	0.135	N.D. #
6) B beta-BHC	4.172	4.730	5523137	7854389	10.615	10.706
12) B 4,4'-DDE	5.318	0.000	276651	0	0.263	N.D. #
14) MA Endrin	5.690	6.570	47414632	63404857	48.757	50.103
15) B Endosulfa...	5.977	0.000	188046	0	0.192	N.D. #
16) A 4,4'-DDD	5.828	0.000	386034	0	0.453	N.D. #
17) MA 4,4'-DDT	6.061	6.995	87394215	124.0E6	107.015	105.441
18) B Endrin al...	6.133	0.000	383308	0	0.465	N.D. #
20) A Methoxychlor	6.609	7.454	102.1E6	161.3E6	247.810	234.277
21) B Endrin ke...	6.822	7.593	2240522	1900794	1.969	1.355 #
27) Chlordane-5	5.977	0.000	188046	0	5.734	N.D. #

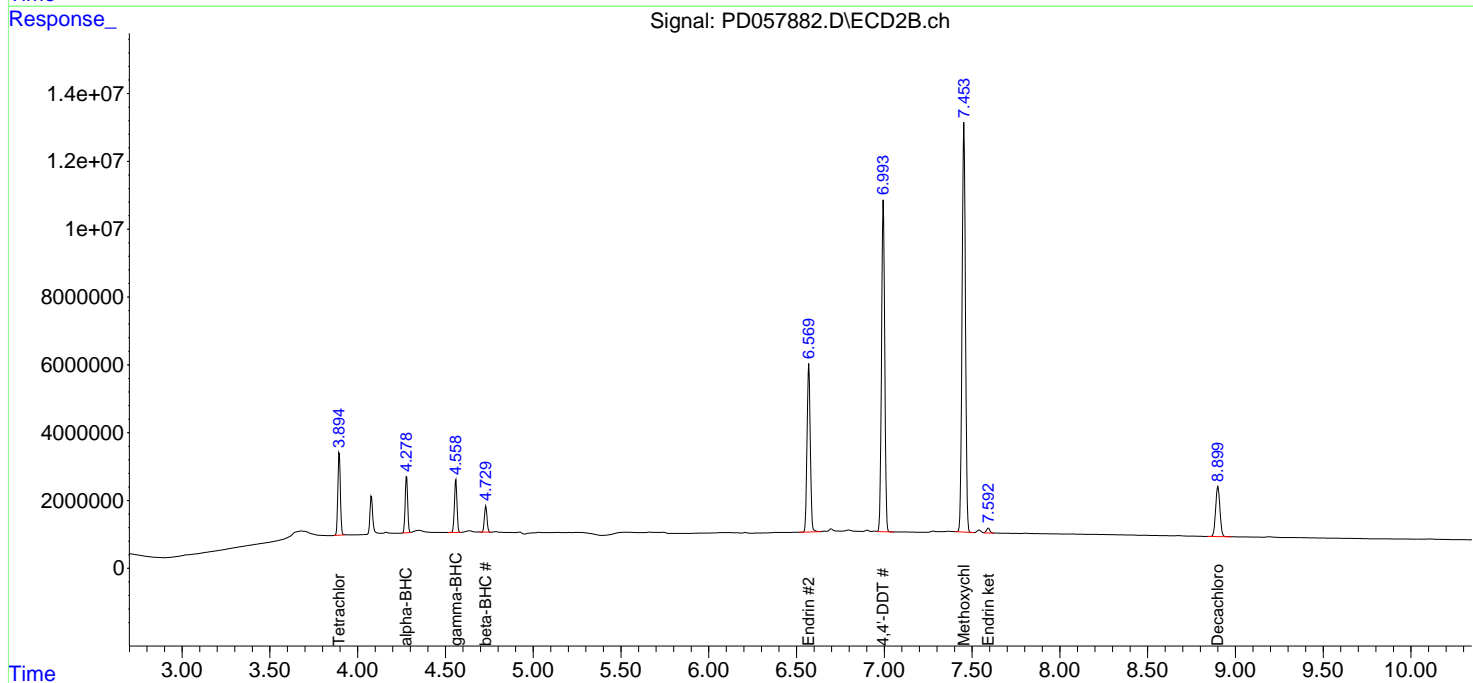
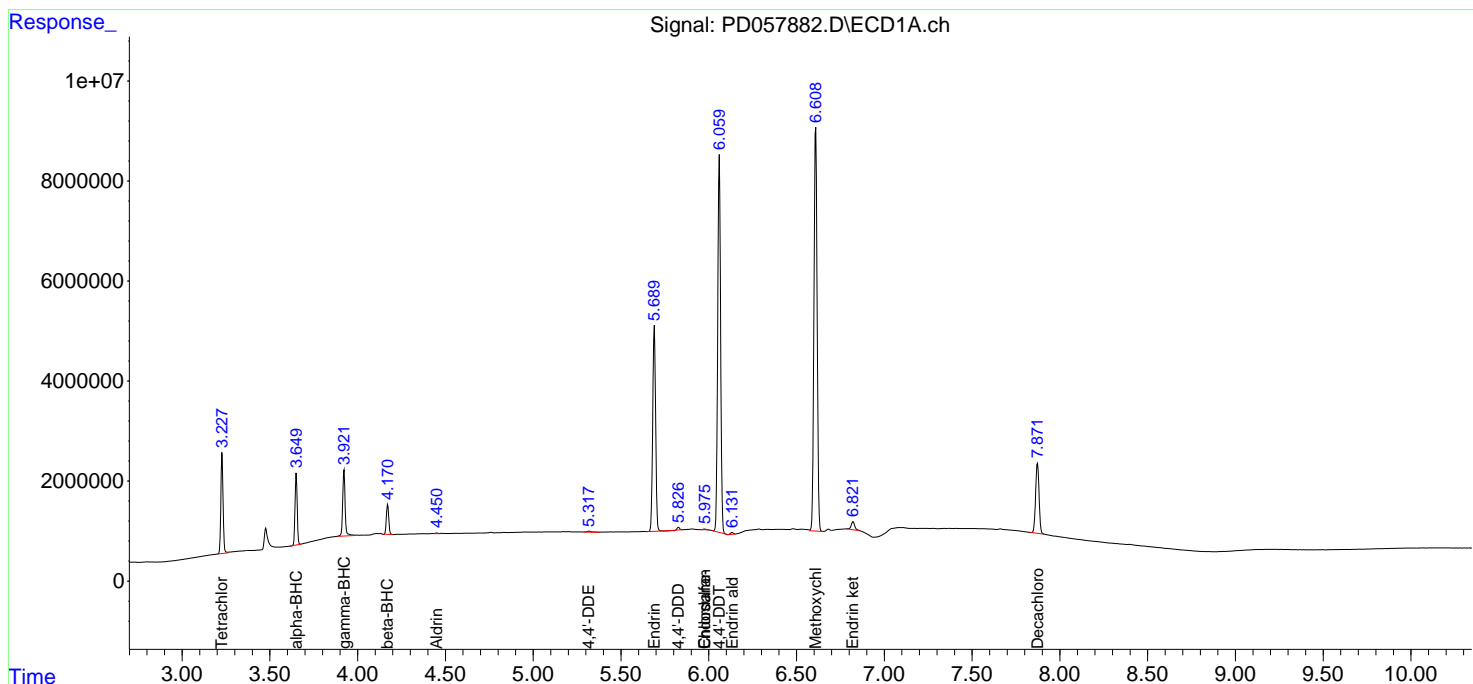
(f)=RT Delta > 1/2 Window (#)=Amounts differ by > 25% (m)=manual int.

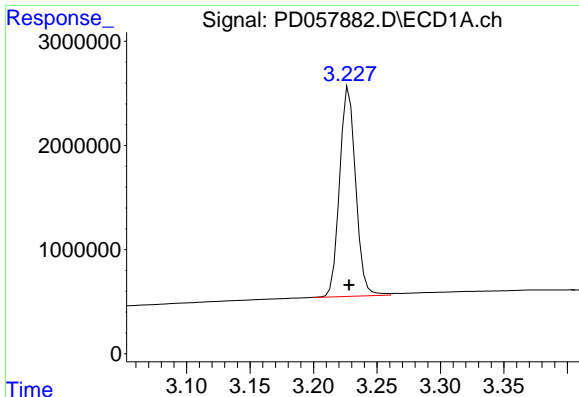
Data Path : Z:\pestpcbsrv\HPCHEM1\ECD_D\Data\PD051220\
 Data File : PD057882.D
 Signal(s) : Signal #1: ECD1A.ch Signal #2: ECD2B.ch
 Acq On : 12 May 2020 12:01
 Operator : AJ\MA
 Sample : PEM
 Misc :
 ALS Vial : 3 Sample Multiplier: 1

Instrument :
 ECD_D
 ClientSampled :

Integration File signal 1: autoint1.e
 Integration File signal 2: autoint2.e
 Quant Time: May 12 12:25:34 2020
 Quant Method : Z:\pestpcbsrv\HPCHEM1\ECD_D\Method\PD051220.M
 Quant Title : GC Extractables
 QLast Update : Tue May 12 12:00:03 2020
 Response via : Initial Calibration
 Integrator: ChemStation

Volume Inj. : 2 µl
 Signal #1 Phase : ZB-MR2 Signal #2 Phase: ZB-MR1
 Signal #1 Info : 30M x 0.32mm x0.2 Signal #2 Info : 30M x 0.32mm x 0.50µm

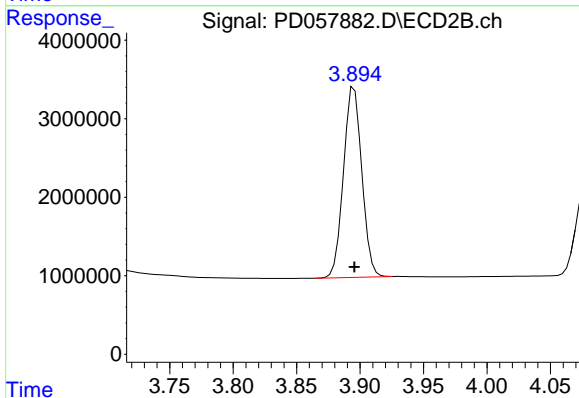




#1 Tetrachloro-m-xylene

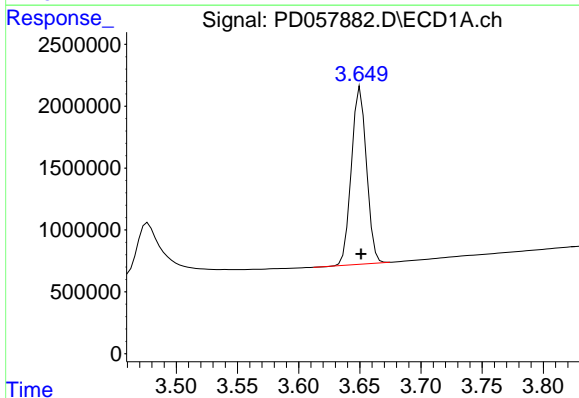
R.T.: 3.228 min
 Delta R.T.: 0.000 min
 Response: 17695747
 Conc: 20.42 ng/ml

Instrument :
 ECD_D
 ClientSampled :



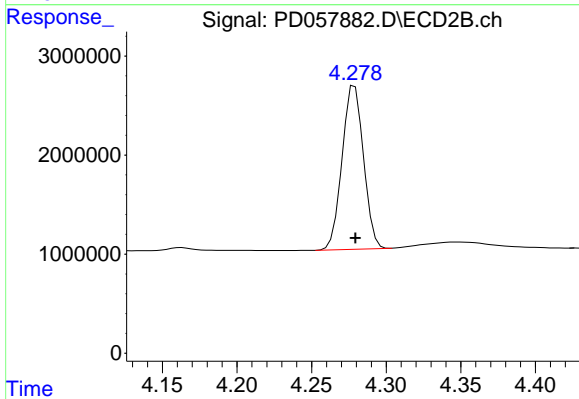
#1 Tetrachloro-m-xylene

R.T.: 3.895 min
 Delta R.T.: 0.000 min
 Response: 24408621
 Conc: 20.75 ng/ml



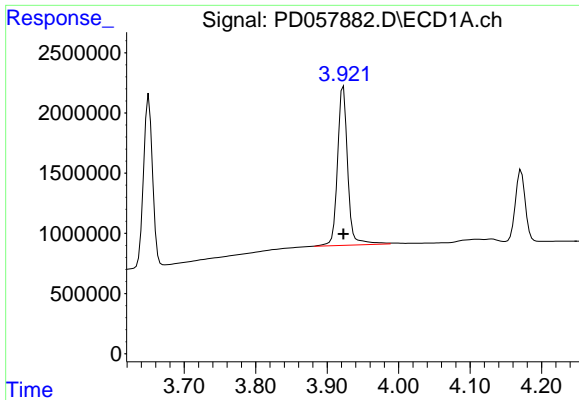
#2 alpha-BHC

R.T.: 3.651 min
 Delta R.T.: 0.000 min
 Response: 12258883
 Conc: 9.06 ng/ml



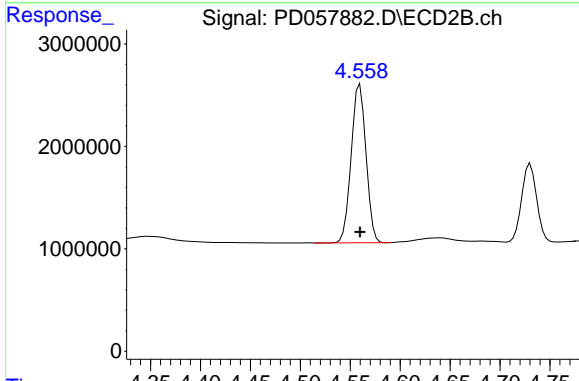
#2 alpha-BHC

R.T.: 4.279 min
 Delta R.T.: 0.000 min
 Response: 16556430
 Conc: 9.24 ng/ml

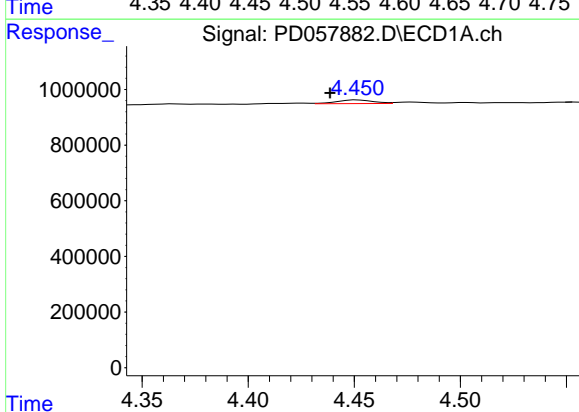


#3 gamma-BHC (Lindane)
 R.T.: 3.923 min
 Delta R.T.: 0.000 min
 Response: 13011621
 Conc: 9.42 ng/ml

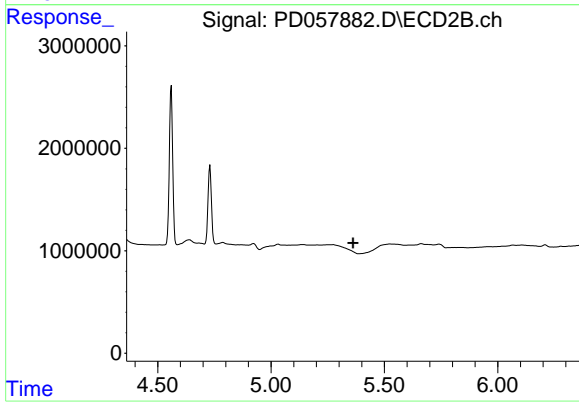
Instrument :
 ECD_D
 ClientSampled :



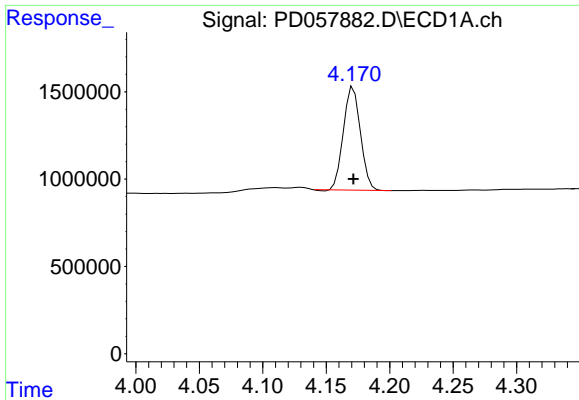
#3 gamma-BHC (Lindane)
 R.T.: 4.560 min
 Delta R.T.: 0.000 min
 Response: 15969935
 Conc: 9.32 ng/ml



#5 Aldrin
 R.T.: 4.452 min
 Delta R.T.: 0.013 min
 Response: 157970
 Conc: 0.14 ng/ml

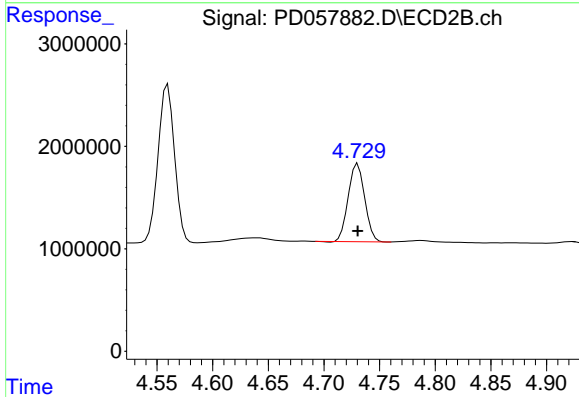


#5 Aldrin
 R.T.: 0.000 min
 Exp R.T. : 5.362 min
 Response: 0
 Conc: N.D.

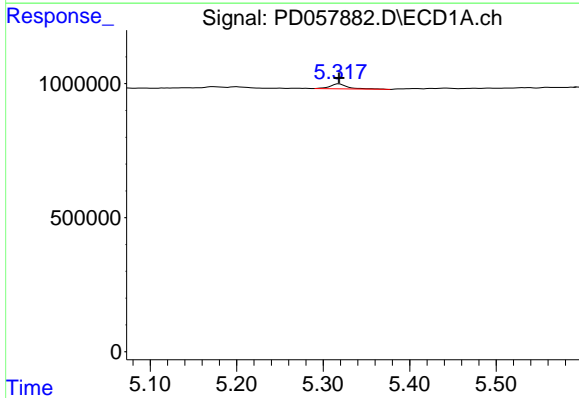


#6 beta-BHC
 R.T.: 4.172 min
 Delta R.T.: 0.000 min
 Response: 5523137
 Conc: 10.62 ng/ml

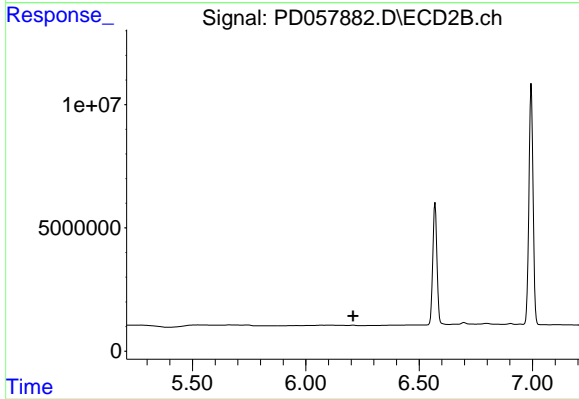
Instrument :
 ECD_D
 ClientSampled :



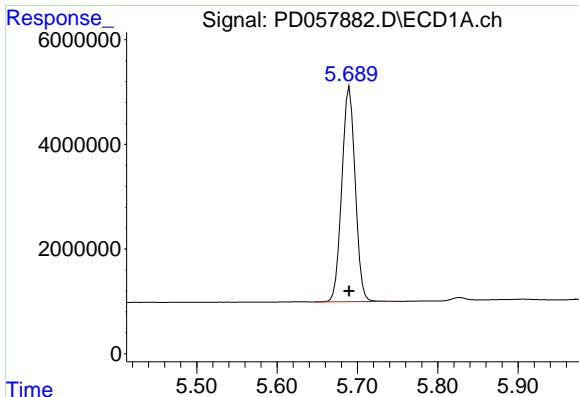
#6 beta-BHC
 R.T.: 4.730 min
 Delta R.T.: 0.000 min
 Response: 7854389
 Conc: 10.71 ng/ml



#12 4,4'-DDE
 R.T.: 5.318 min
 Delta R.T.: 0.000 min
 Response: 276651
 Conc: 0.26 ng/ml



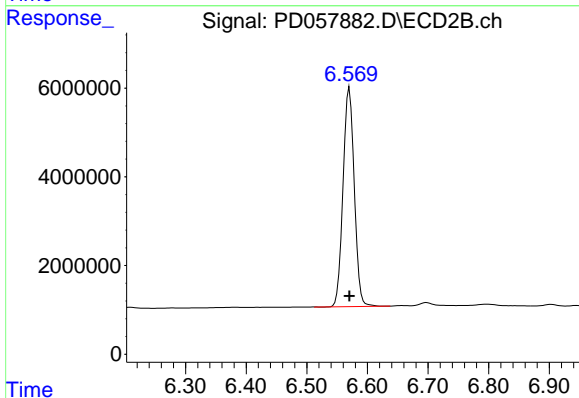
#12 4,4'-DDE
 R.T.: 0.000 min
 Exp R.T. : 6.209 min
 Response: 0
 Conc: N.D.



#14 Endrin

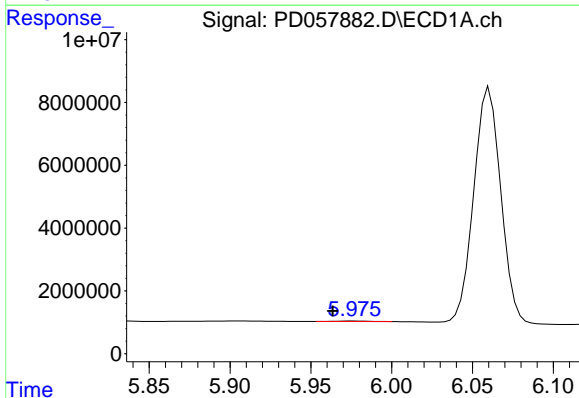
R.T.: 5.690 min
 Delta R.T.: 0.000 min
 Response: 47414632
 Conc: 48.76 ng/ml

Instrument :
 ECD_D
 ClientSampled :



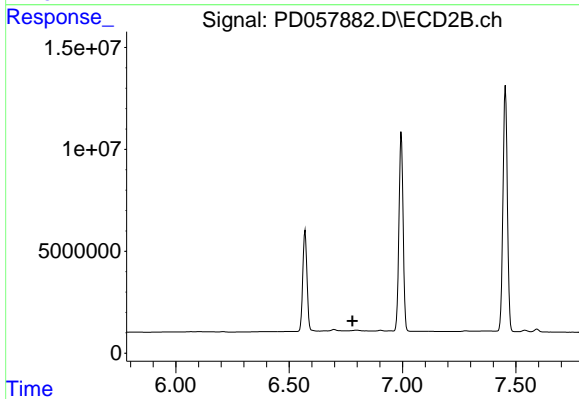
#14 Endrin

R.T.: 6.570 min
 Delta R.T.: 0.000 min
 Response: 63404857
 Conc: 50.10 ng/ml



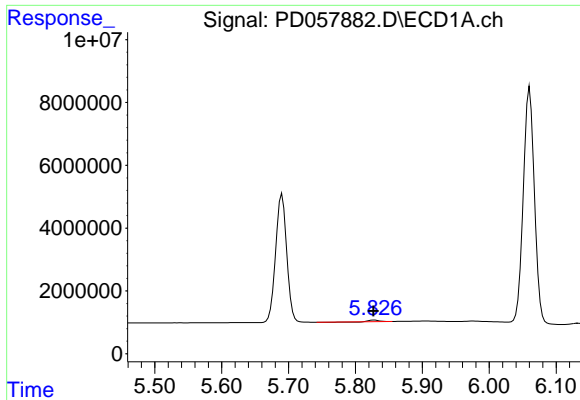
#15 Endosulfan II

R.T.: 5.977 min
 Delta R.T.: 0.013 min
 Response: 188046
 Conc: 0.19 ng/ml



#15 Endosulfan II

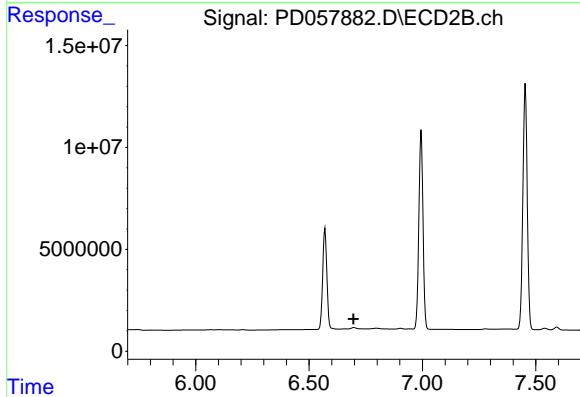
R.T.: 0.000 min
 Exp R.T. : 6.780 min
 Response: 0
 Conc: N.D.



#16 4,4'-DDD

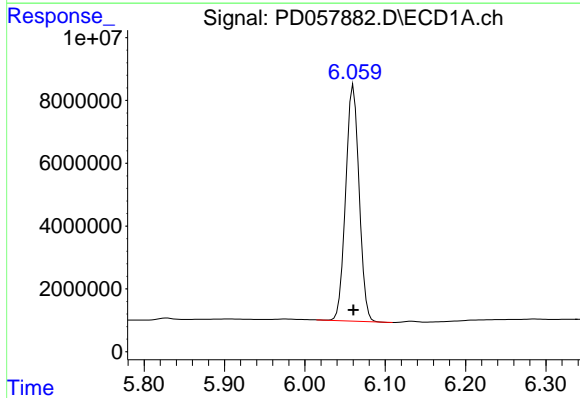
R.T.: 5.828 min
 Delta R.T.: 0.001 min
 Response: 386034
 Conc: 0.45 ng/ml

Instrument :
 ECD_D
 ClientSampled :



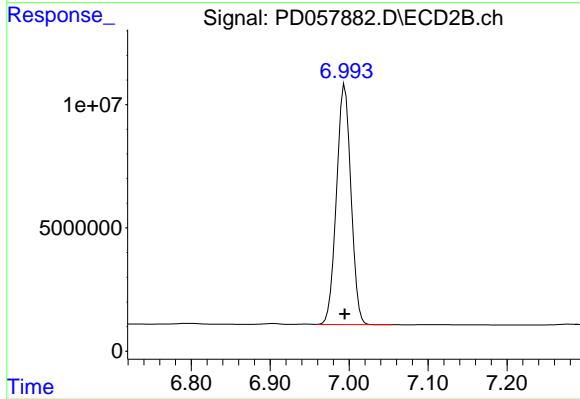
#16 4,4'-DDD

R.T.: 0.000 min
 Exp R.T. : 6.697 min
 Response: 0
 Conc: N.D.



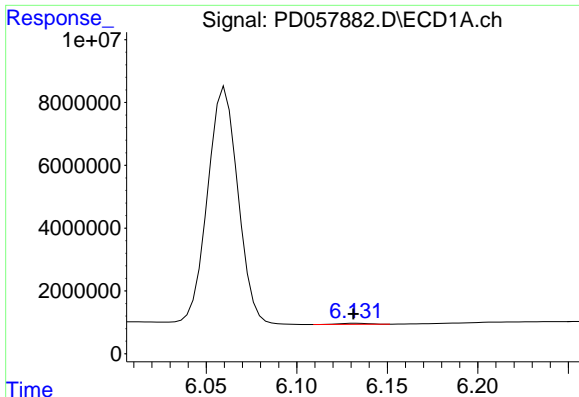
#17 4,4'-DDT

R.T.: 6.061 min
 Delta R.T.: 0.000 min
 Response: 87394215
 Conc: 107.02 ng/ml



#17 4,4'-DDT

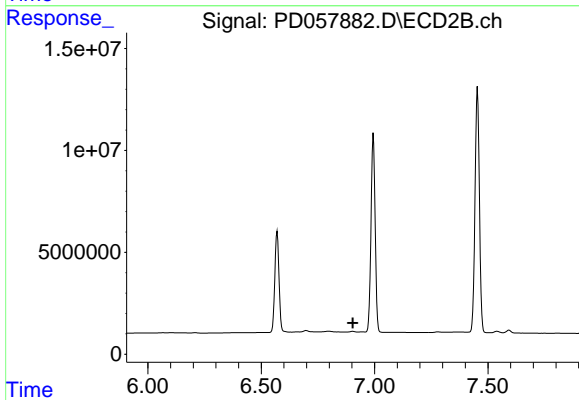
R.T.: 6.995 min
 Delta R.T.: 0.000 min
 Response: 123984322
 Conc: 105.44 ng/ml



#18 Endrin aldehyde

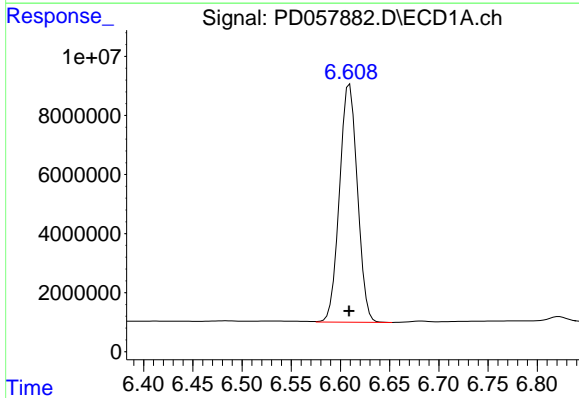
R.T.: 6.133 min
 Delta R.T.: 0.001 min
 Response: 383308
 Conc: 0.46 ng/ml

Instrument :
 ECD_D
 ClientSampleId :



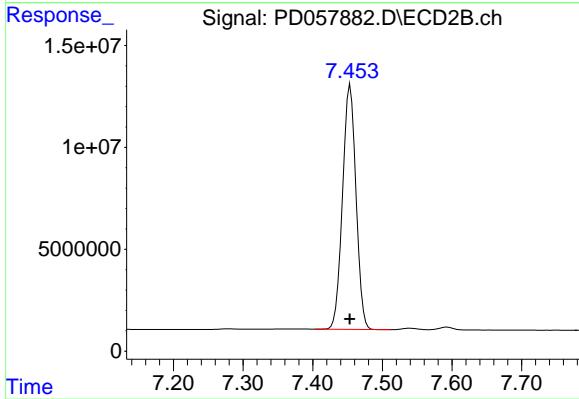
#18 Endrin aldehyde

R.T.: 0.000 min
 Exp R.T. : 6.903 min
 Response: 0
 Conc: N.D.



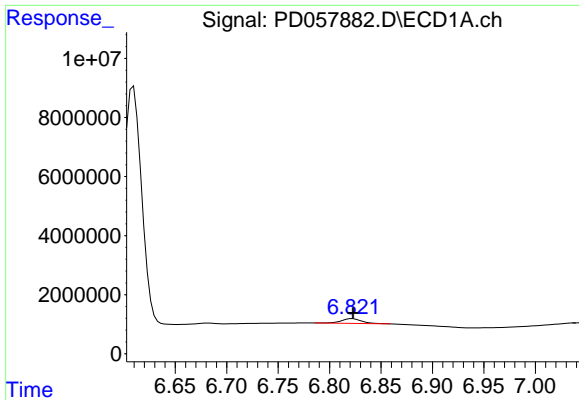
#20 Methoxychlor

R.T.: 6.609 min
 Delta R.T.: 0.000 min
 Response: 102147323
 Conc: 247.81 ng/ml



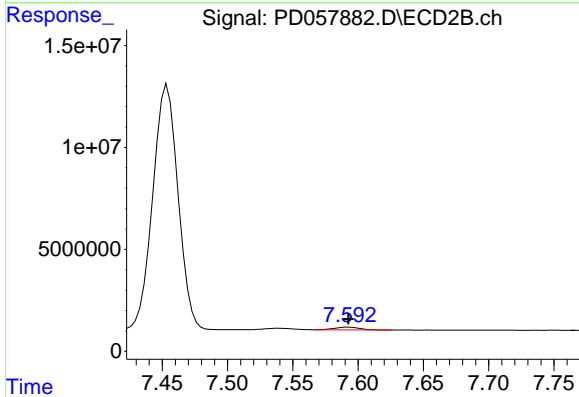
#20 Methoxychlor

R.T.: 7.454 min
 Delta R.T.: 0.000 min
 Response: 161274872
 Conc: 234.28 ng/ml

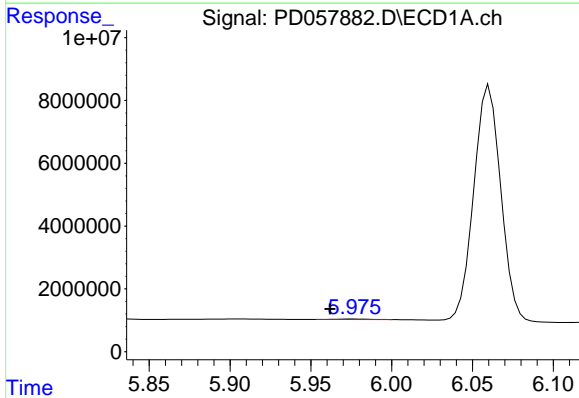


#21 Endrin ketone
 R.T.: 6.822 min
 Delta R.T.: 0.000 min
 Response: 2240522
 Conc: 1.97 ng/ml

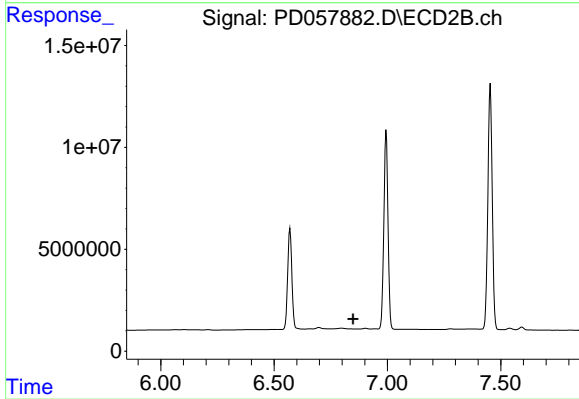
Instrument :
 ECD_D
 ClientSampleId :



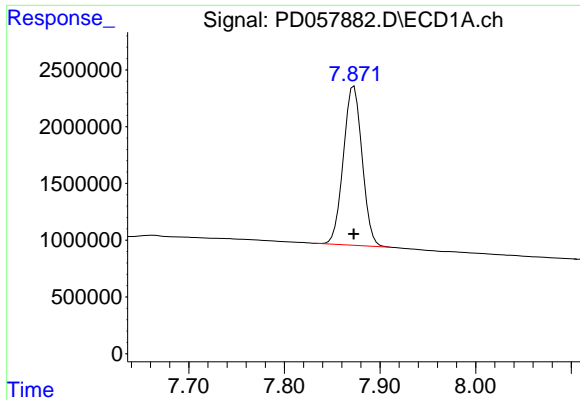
#21 Endrin ketone
 R.T.: 7.593 min
 Delta R.T.: 0.000 min
 Response: 1900794
 Conc: 1.36 ng/ml



#27 Chlordane-5
 R.T.: 5.977 min
 Delta R.T.: 0.015 min
 Response: 188046
 Conc: 5.73 ng/ml



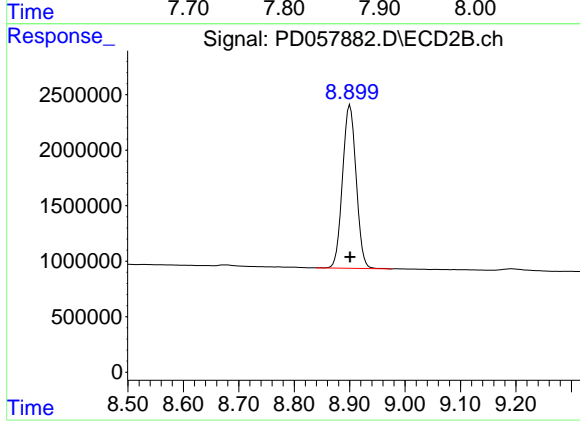
#27 Chlordane-5
 R.T.: 0.000 min
 Exp R.T. : 6.849 min
 Response: 0
 Conc: N.D.



#28 Decachlorobiphenyl

R.T.: 7.873 min
Delta R.T.: 0.000 min
Response: 19122292
Conc: 21.22 ng/ml

Instrument :
ECD_D
ClientSampleId :



#28 Decachlorobiphenyl

R.T.: 8.901 min
Delta R.T.: 0.000 min
Response: 25128905
Conc: 22.05 ng/ml