

Data Path : Z:\pestpcbsrv\HPCHEM1\ECD_D\Data\PD051221\
 Data File : PD062875.D
 Signal(s) : Signal #1: ECD1A.ch Signal #2: ECD2B.ch
 Acq On : 11 May 2021 15:12
 Operator : AR\AJ
 Sample : PCHLORCCC500
 Misc :
 ALS Vial : 5 Sample Multiplier: 1

Instrument :
 ECD_D
ClientSampleId :
 PCHLORCCC500

Manual Integrations
APPROVED
 Ankita
 5/13/2021 10:56:43 AM

Integration File signal 1: autoint1.e
 Integration File signal 2: autoint2.e
 Quant Time: May 12 05:50:46 2021
 Quant Method : Z:\pestpcbsrv\HPCHEM1\ECD_D\Method\PD050621.M
 Quant Title : GC Extractables
 QLast Update : Thu May 06 08:49:38 2021
 Response via : Initial Calibration
 Integrator: ChemStation

Volume Inj. : 2 µl
 Signal #1 Phase : ZB-MR2 Signal #2 Phase: ZB-MR1
 Signal #1 Info : 30M x 0.32mm x0.2 Signal #2 Info : 30M x 0.32mm x 0.50µm

	Compound	RT#1	RT#2	Resp#1	Resp#2	ng/ml	ng/ml

System Monitoring Compounds							
1)	SA Tetrachlo...	3.446	3.970	51405031	492.2E6	57.810	42.517 #
28)	SA Decachlor...	8.204	9.031	52197000	535.4E6	49.302	46.403
Target Compounds							
23)	Chlordane-1	4.315	4.962	17218131	240.9E6	488.274	420.092m
24)	Chlordane-2	4.817	5.431	20203205	226.3E6	496.052	423.966
25)	Chlordane-3	5.386	6.075	55269526	974.9E6	466.428	436.233m
26)	Chlordane-4	5.444	6.151	46609314	1111.1E6	480.633	430.766
27)	Chlordane-5	6.282	6.954	19361637	214.1E6	444.148	435.259m

(f)=RT Delta > 1/2 Window (#)=Amounts differ by > 25% (m)=manual int.

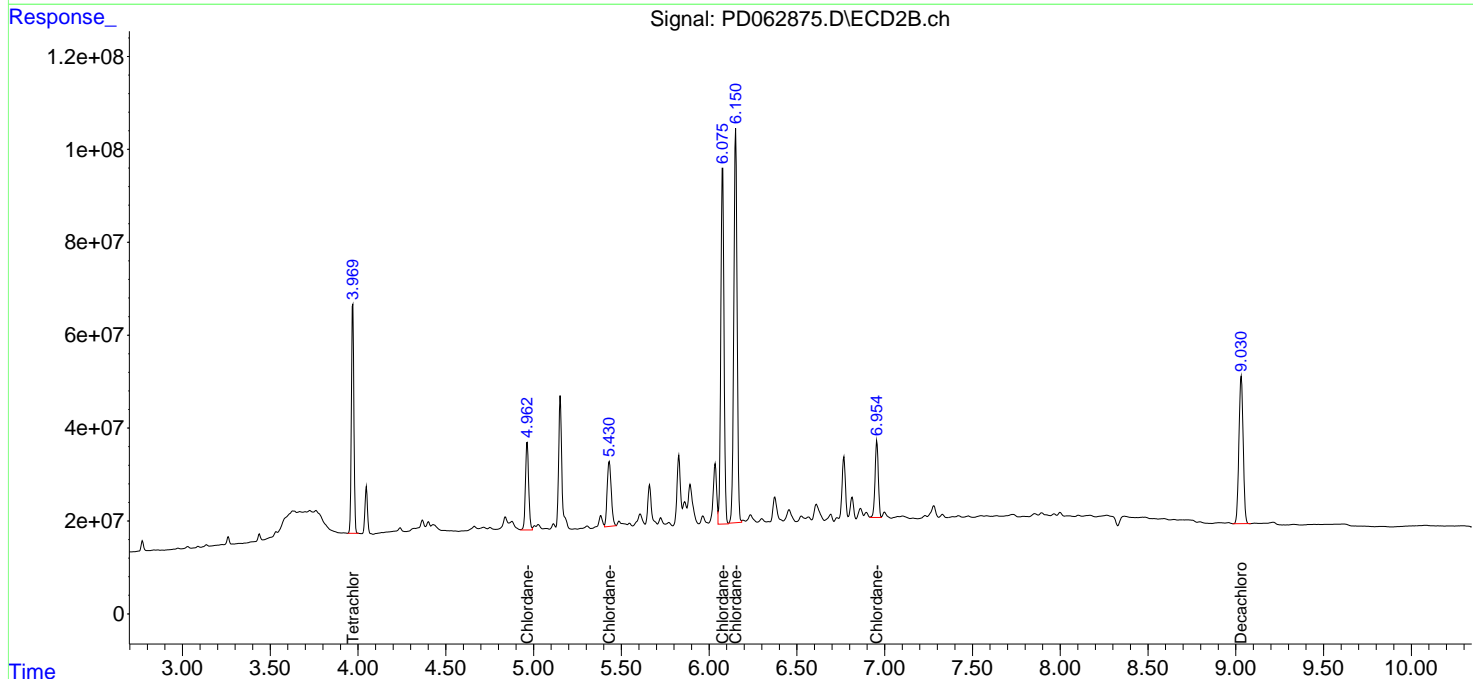
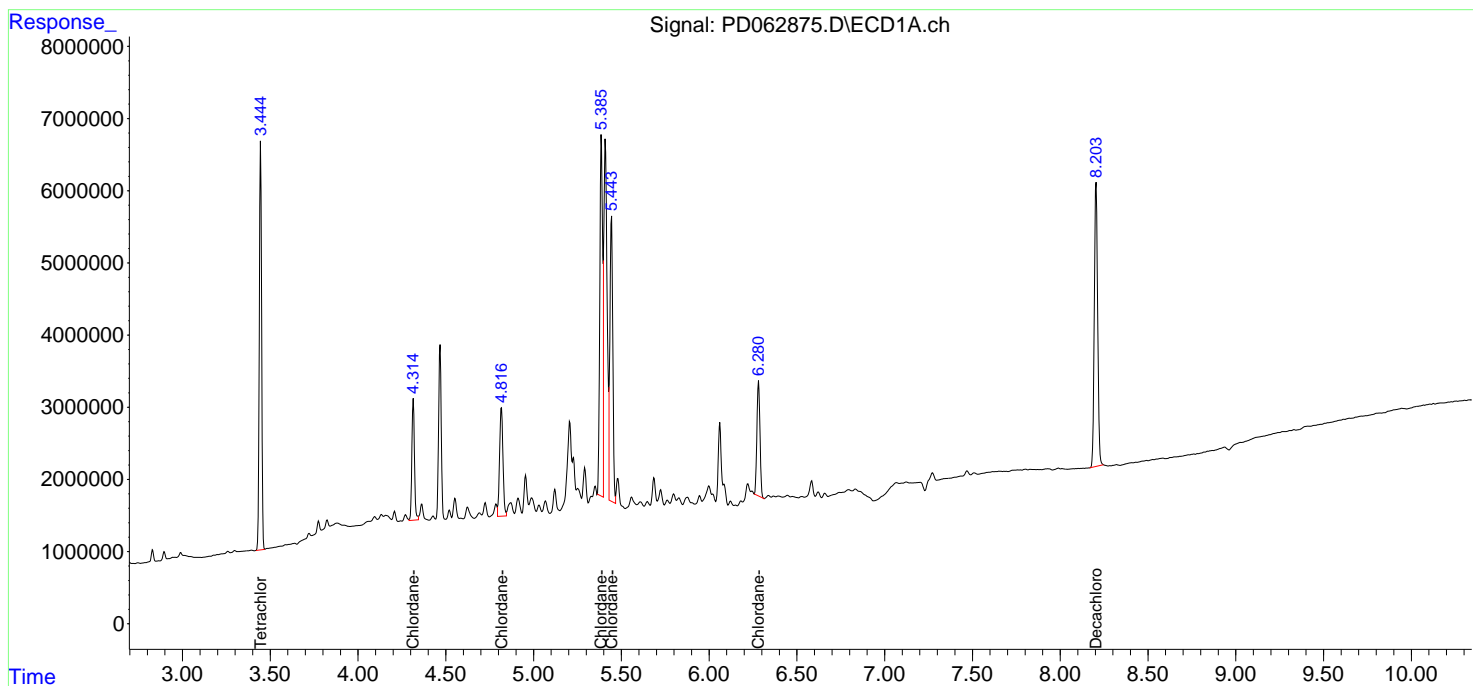
Data Path : Z:\pestpcbsrv\HPCHEM1\ECD_D\Data\PD051221\
 Data File : PD062875.D
 Signal(s) : Signal #1: ECD1A.ch Signal #2: ECD2B.ch
 Acq On : 11 May 2021 15:12
 Operator : AR\AJ
 Sample : PCHLORCCC500
 Misc :
 ALS Vial : 5 Sample Multiplier: 1

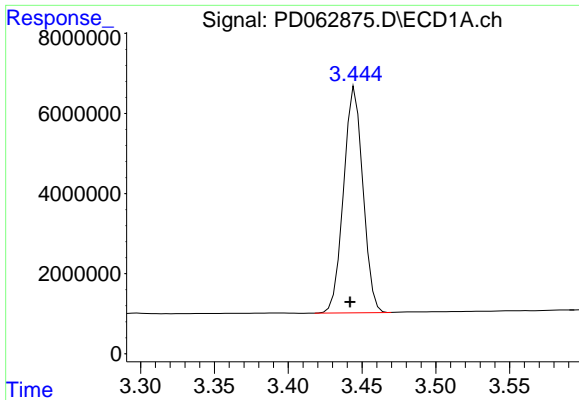
Instrument :
 ECD_D
ClientSampled :
 PCHLORCCC500

Manual Integrations
APPROVED
 Ankita
 5/13/2021 10:56:43 AM

Integration File signal 1: autoint1.e
 Integration File signal 2: autoint2.e
 Quant Time: May 12 05:50:46 2021
 Quant Method : Z:\pestpcbsrv\HPCHEM1\ECD_D\Method\PD050621.M
 Quant Title : GC Extractables
 QLast Update : Thu May 06 08:49:38 2021
 Response via : Initial Calibration
 Integrator: ChemStation

Volume Inj. : 2 µl
 Signal #1 Phase : ZB-MR2 Signal #2 Phase: ZB-MR1
 Signal #1 Info : 30M x 0.32mm x0.2 Signal #2 Info : 30M x 0.32mm x 0.50µm

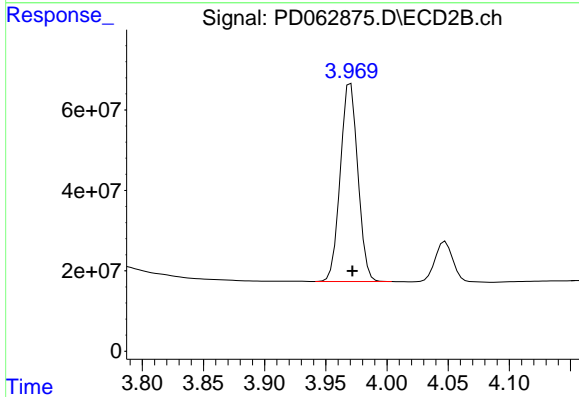




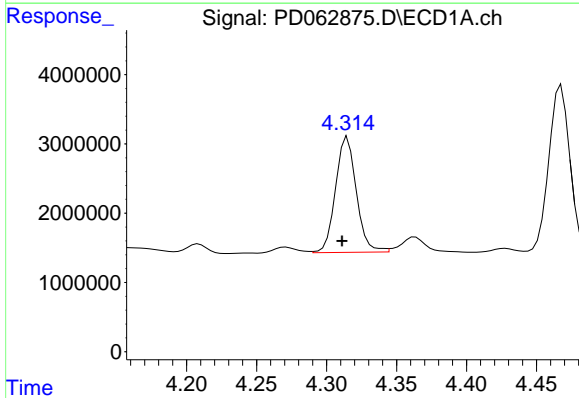
#1 Tetrachloro-m-xylene
 R.T.: 3.446 min
 Delta R.T.: 0.003 min
 Response: 51405031
 Conc: 57.81 ng/ml

Instrument :
 ECD_D
ClientSampleId :
 PCHLORCCC500

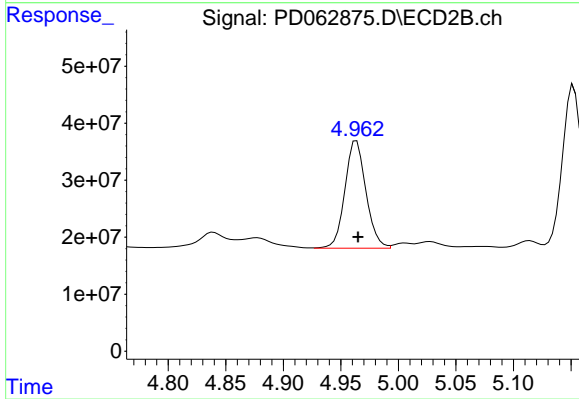
Manual Integrations
APPROVED
 Ankita
 5/13/2021 10:56:43 AM



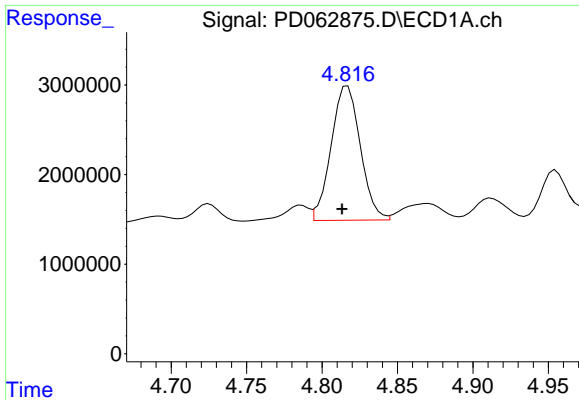
#1 Tetrachloro-m-xylene
 R.T.: 3.970 min
 Delta R.T.: -0.001 min
 Response: 492223665
 Conc: 42.52 ng/ml



#23 Chlordane-1
 R.T.: 4.315 min
 Delta R.T.: 0.004 min
 Response: 17218131
 Conc: 488.27 ng/ml



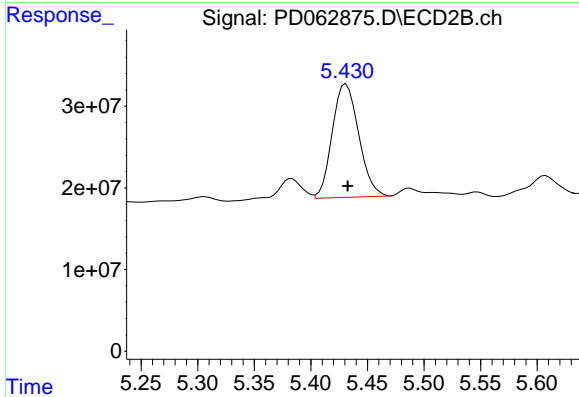
#23 Chlordane-1
 R.T.: 4.962 min
 Delta R.T.: -0.003 min
 Response: 240891053
 Conc: 420.09 ng/ml m



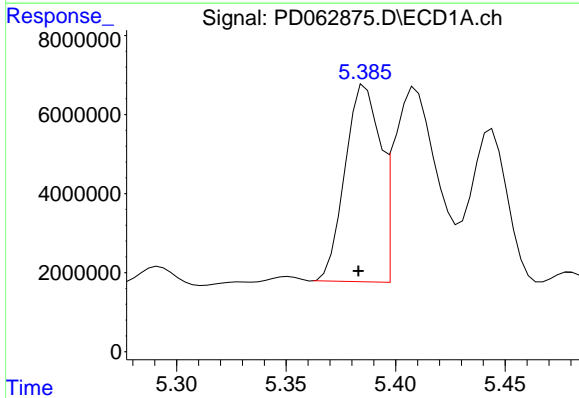
#24 Chlordane-2
 R.T.: 4.817 min
 Delta R.T.: 0.004 min
 Response: 20203205
 Conc: 496.05 ng/ml

Instrument :
 ECD_D
ClientSampleId :
 PCHLORCCC500

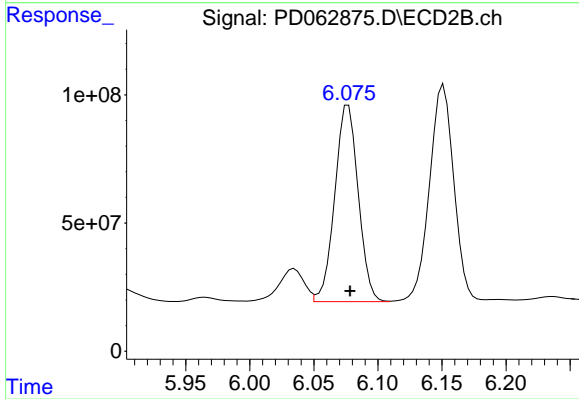
Manual Integrations
APPROVED
 Ankita
 5/13/2021 10:56:43 AM



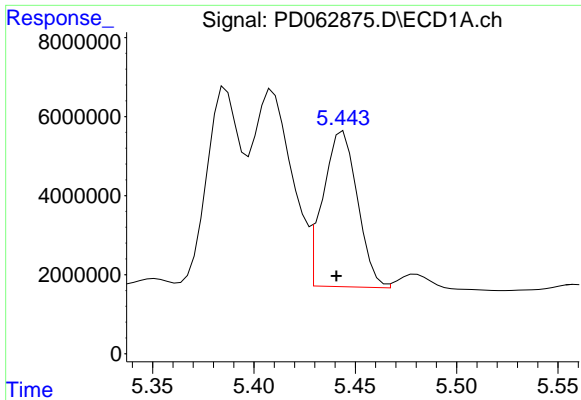
#24 Chlordane-2
 R.T.: 5.431 min
 Delta R.T.: -0.001 min
 Response: 226342637
 Conc: 423.97 ng/ml



#25 Chlordane-3
 R.T.: 5.386 min
 Delta R.T.: 0.003 min
 Response: 55269526
 Conc: 466.43 ng/ml



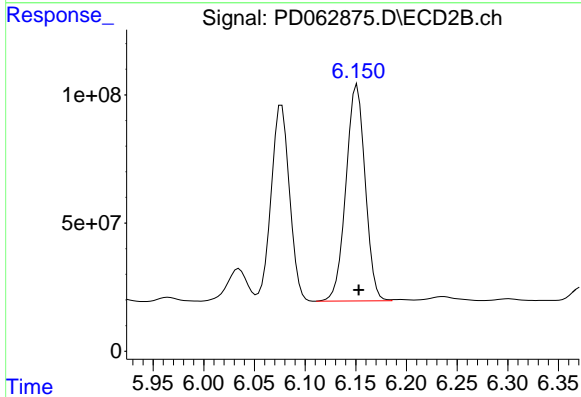
#25 Chlordane-3
 R.T.: 6.075 min
 Delta R.T.: -0.003 min
 Response: 974941410
 Conc: 436.23 ng/ml m



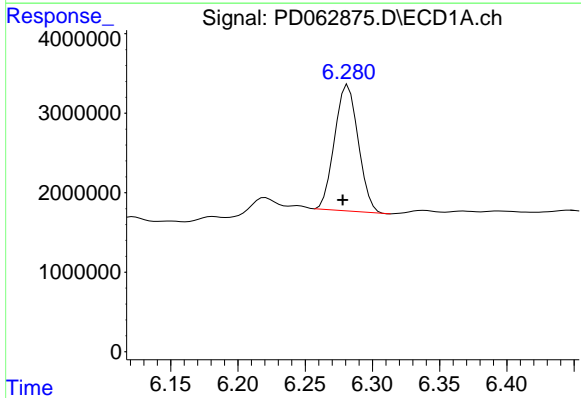
#26 Chlordane-4
 R.T.: 5.444 min
 Delta R.T.: 0.003 min
 Response: 46609314
 Conc: 480.63 ng/ml

Instrument :
 ECD_D
ClientSampled :
 PCHLORCCC500

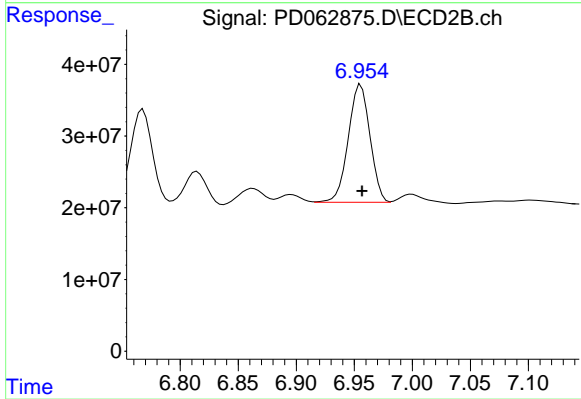
Manual Integrations
APPROVED
 Ankita
 5/13/2021 10:56:43 AM



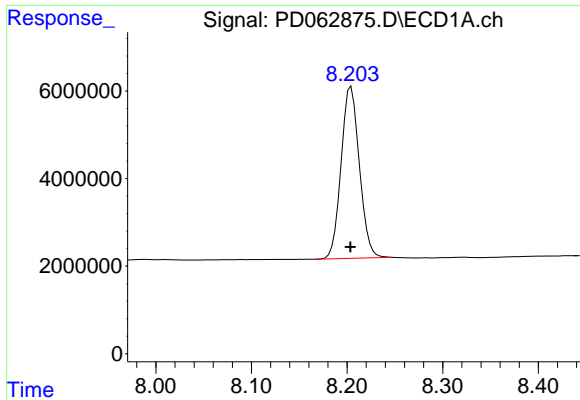
#26 Chlordane-4
 R.T.: 6.151 min
 Delta R.T.: -0.002 min
 Response: 1111071227
 Conc: 430.77 ng/ml



#27 Chlordane-5
 R.T.: 6.282 min
 Delta R.T.: 0.004 min
 Response: 19361637
 Conc: 444.15 ng/ml



#27 Chlordane-5
 R.T.: 6.954 min
 Delta R.T.: -0.002 min
 Response: 214079239
 Conc: 435.26 ng/ml m



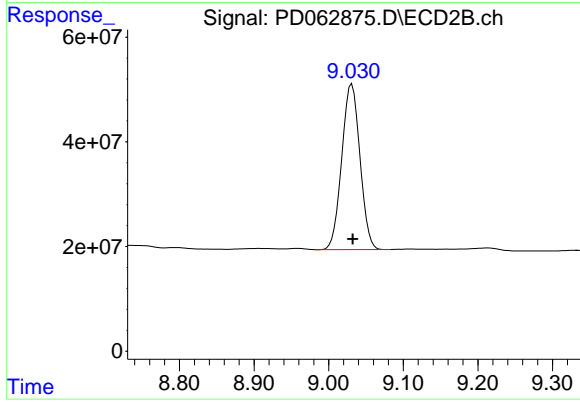
#28 Decachlorobiphenyl

R.T.: 8.204 min
Delta R.T.: 0.000 min
Response: 52197000
Conc: 49.30 ng/ml

Instrument :
ECD_D
ClientSampleId :
PCHLORCCC500

Manual Integrations
APPROVED

Ankita
5/13/2021 10:56:43 AM



#28 Decachlorobiphenyl

R.T.: 9.031 min
Delta R.T.: 0.000 min
Response: 535441360
Conc: 46.40 ng/ml