

Data Path : Z:\pestpcbsrv\HPCHEM1\ECD_D\Data\PD051325\
 Data File : PD088510.D
 Signal(s) : Signal #1: ECD1A.ch Signal #2: ECD2B.ch
 Acq On : 13 May 2025 12:24
 Operator : AR\AJ
 Sample : PB167851TB
 Misc :
 ALS Vial : 15 Sample Multiplier: 1

Instrument :
 ECD_D
 ClientSampleId :
 PB167851TB

Integration File signal 1: autoint1.e
 Integration File signal 2: autoint2.e
 Quant Time: May 13 22:40:00 2025
 Quant Method : Z:\pestpcbsrv\HPCHEM1\ECD_D\Method\PD041825.M
 Quant Title : GC Extractables
 QLast Update : Sat Apr 19 06:32:27 2025
 Response via : Initial Calibration
 Integrator: ChemStation

Volume Inj. : 1 µl
 Signal #1 Phase : ZB-MR1 Signal #2 Phase: ZB-MR2
 Signal #1 Info : 30M x 0.32mm x0.5 Signal #2 Info : 30M x 0.32mm x 0.25µm

Compound	RT#1	RT#2	Resp#1	Resp#2	ng/ml	ng/ml

System Monitoring Compounds						
1) SA Tetrachlo...	3.552	2.883	43130125	309.6E6	21.593	21.174
28) SA Decachlor...	9.074	8.074	71932047	326.4E6	21.744	17.661
Target Compounds						
2) A alpha-BHC	0.000	3.385	0	634284	N.D.	0.028 #
3) MA gamma-BHC...	4.338	3.723	176178	534079	0.042	0.025 #
5) MB Aldrin	0.000	4.388f	0	807928	N.D.	0.039 #
7) B delta-BHC	4.780f	4.255	5407424	607949	1.311	0.029 #
8) B Heptachlo...	5.685	4.884	1354244	173059	0.379	0.009 #
9) A Endosulfan I	6.082	5.277f	235880	522045	0.070	0.029 #
10) B gamma-Chl...	5.929f	5.130	447554	591106	0.124	0.029 #
11) B alpha-Chl...	6.005f	0.000	1507798	0	0.418	N.D. #
12) B 4,4'-DDE	0.000	5.382	0	586025	N.D.	0.030 #
13) MA Dieldrin	0.000	5.518	0	131190	N.D.	0.007 #
14) MA Endrin	0.000	5.795	0	698095	N.D.	0.038 #
15) B Endosulfa...	6.771f	0.000	441622	0	0.141	N.D. #
16) A 4,4'-DDD	0.000	5.943	0	143009	N.D.	0.009 #
17) MA 4,4'-DDT	0.000	6.184	0	298457	N.D.	0.018 #
18) B Endrin al...	6.937f	6.258	513118	822224	0.222	0.062 #
19) B Endosulfa...	0.000	6.480	0	181748	N.D.	0.011 #
22) Mirex	0.000	7.211f	0	246626	N.D.	0.017 #
23) Chlordane-1	0.000	3.935f	0	822268	N.D.	1.026 #
24) Chlordane-2	0.000	4.483	0	314823	N.D.	0.381 #
25) Chlordane-3	5.929	5.130	447554	591106	0.664	0.234 #
26) Chlordane-4	6.005f	5.153f	1507798	1305582	1.849	0.611 #

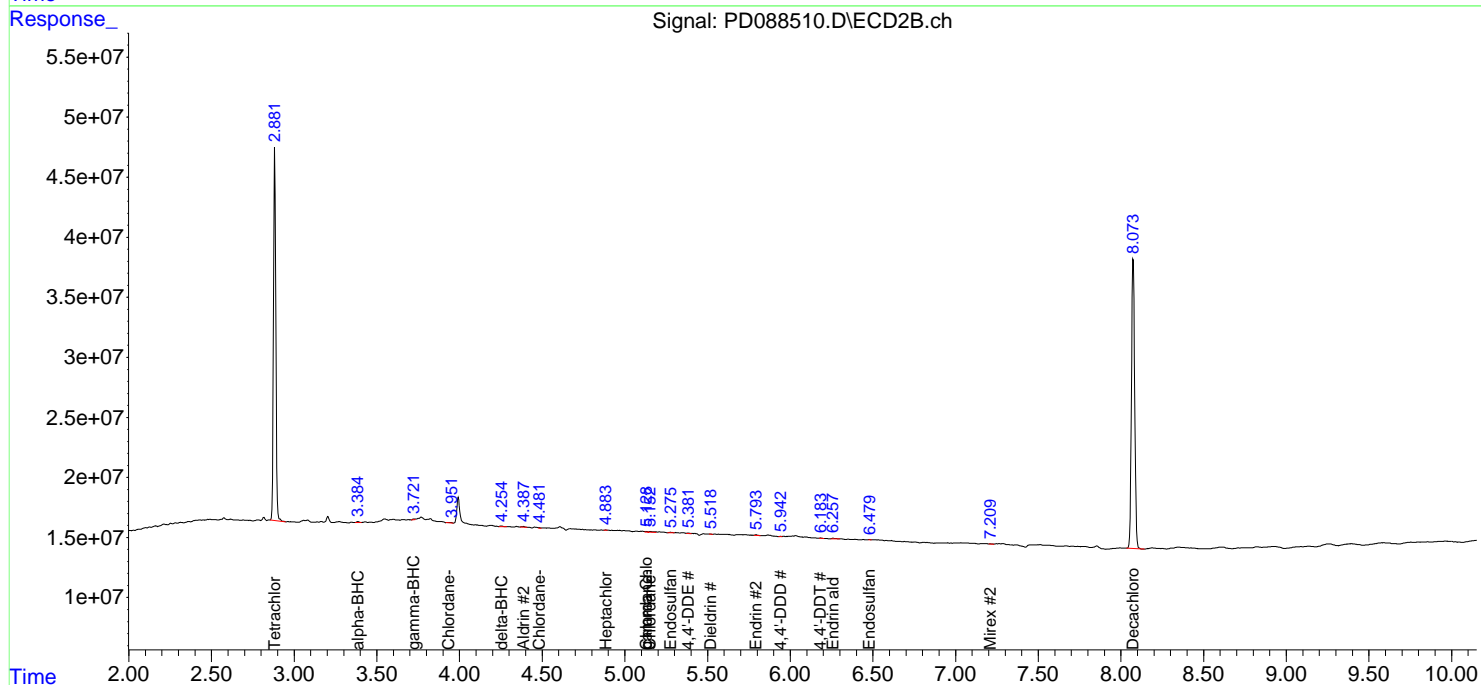
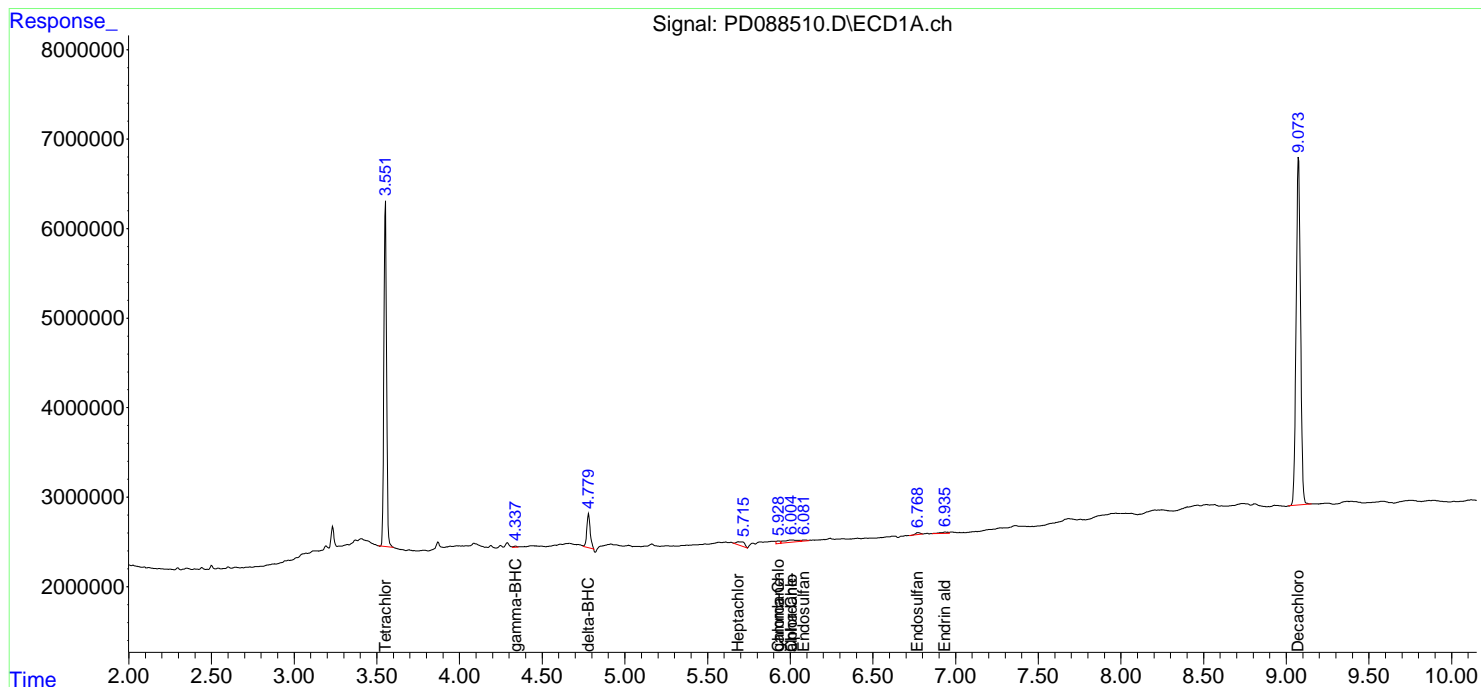
(f)=RT Delta > 1/2 Window (#)=Amounts differ by > 25% (m)=manual int.

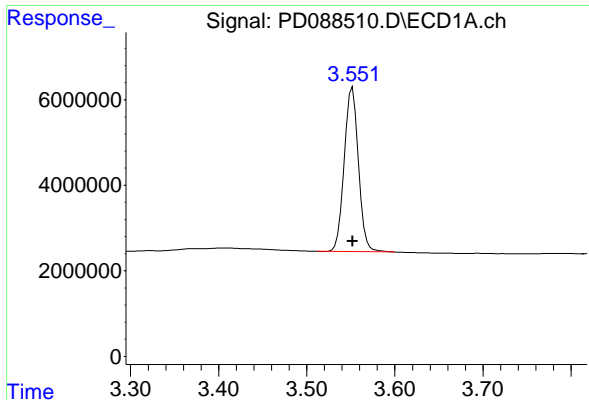
Data Path : Z:\pestpcbsrv\HPCHEM1\ECD_D\Data\PD051325\
 Data File : PD088510.D
 Signal(s) : Signal #1: ECD1A.ch Signal #2: ECD2B.ch
 Acq On : 13 May 2025 12:24
 Operator : AR\AJ
 Sample : PB167851TB
 Misc :
 ALS Vial : 15 Sample Multiplier: 1

Instrument :
 ECD_D
 ClientSampleId :
 PB167851TB

Integration File signal 1: autoint1.e
 Integration File signal 2: autoint2.e
 Quant Time: May 13 22:40:00 2025
 Quant Method : Z:\pestpcbsrv\HPCHEM1\ECD_D\Method\PD041825.M
 Quant Title : GC Extractables
 QLast Update : Sat Apr 19 06:32:27 2025
 Response via : Initial Calibration
 Integrator: ChemStation

Volume Inj. : 1 µl
 Signal #1 Phase : ZB-MR1 Signal #2 Phase: ZB-MR2
 Signal #1 Info : 30M x 0.32mm x 0.5 Signal #2 Info : 30M x 0.32mm x 0.25µm

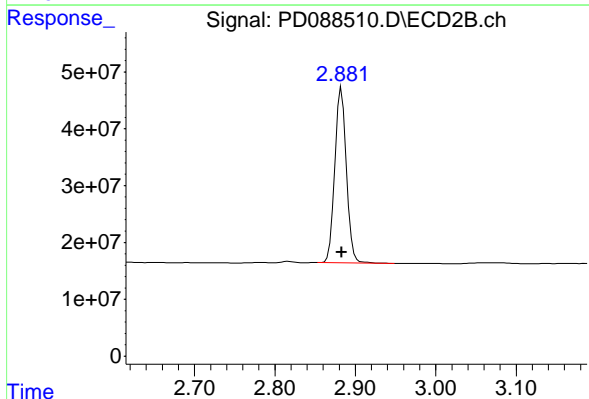




#1 Tetrachloro-m-xylene

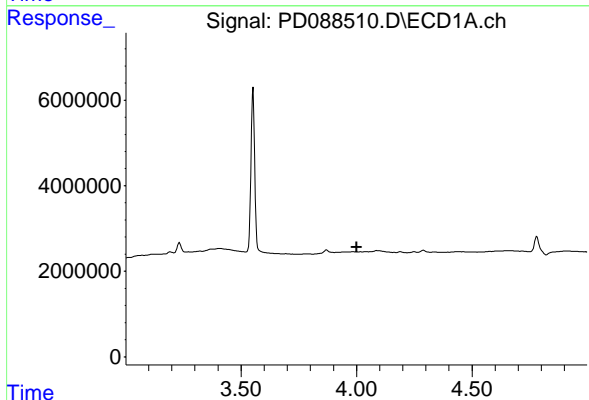
R.T.: 3.552 min
 Delta R.T.: 0.000 min
 Response: 43130125
 Conc: 21.59 ng/ml

Instrument :
 ECD_D
 ClientSampleId :
 PB167851TB



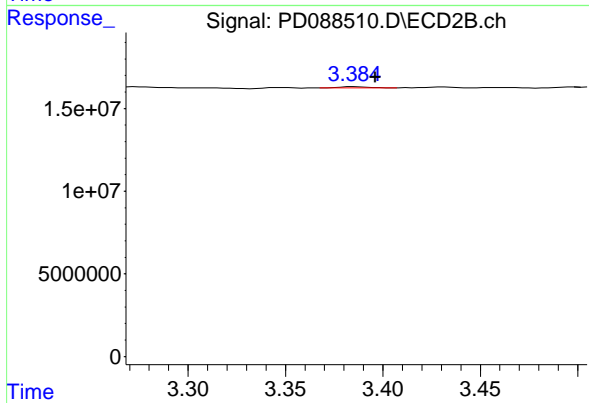
#1 Tetrachloro-m-xylene

R.T.: 2.883 min
 Delta R.T.: 0.000 min
 Response: 309604326
 Conc: 21.17 ng/ml



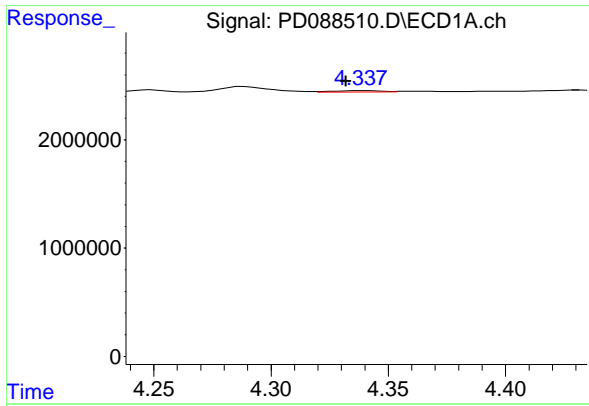
#2 alpha-BHC

R.T.: 0.000 min
 Exp R.T. : 4.001 min
 Response: 0
 Conc: N.D.



#2 alpha-BHC

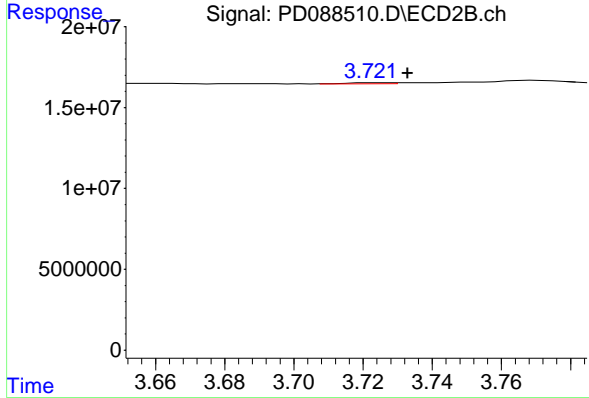
R.T.: 3.385 min
 Delta R.T.: -0.011 min
 Response: 634284
 Conc: 0.03 ng/ml



#3 gamma-BHC (Lindane)

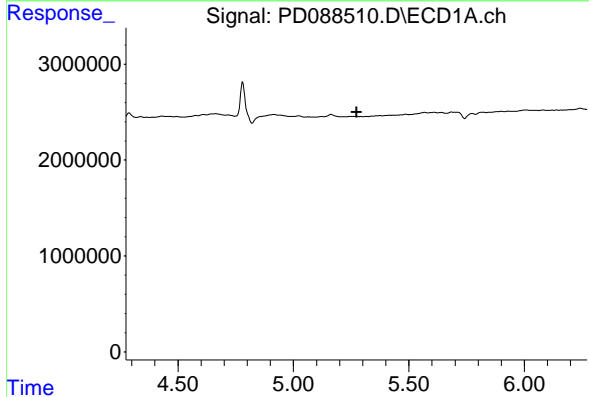
R.T.: 4.338 min
 Delta R.T.: 0.007 min
 Response: 176178
 Conc: 0.04 ng/ml

Instrument :
 ECD_D
 ClientSampleId :
 PB167851TB



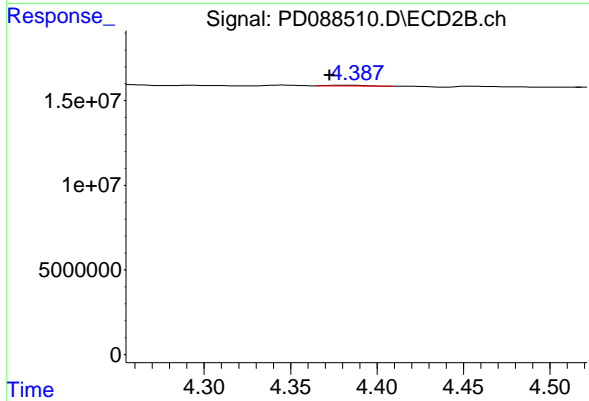
#3 gamma-BHC (Lindane)

R.T.: 3.723 min
 Delta R.T.: -0.010 min
 Response: 534079
 Conc: 0.02 ng/ml



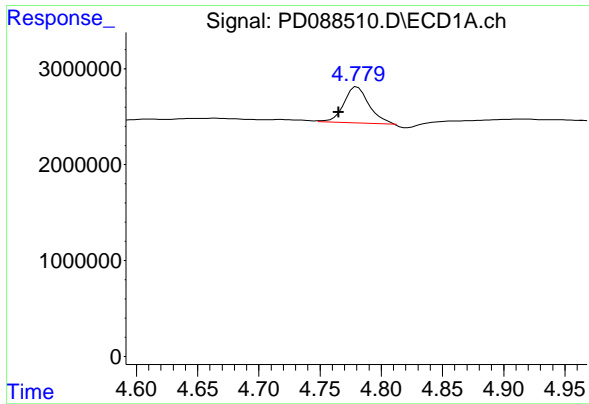
#5 Aldrin

R.T.: 0.000 min
 Exp R.T. : 5.273 min
 Response: 0
 Conc: N.D.



#5 Aldrin

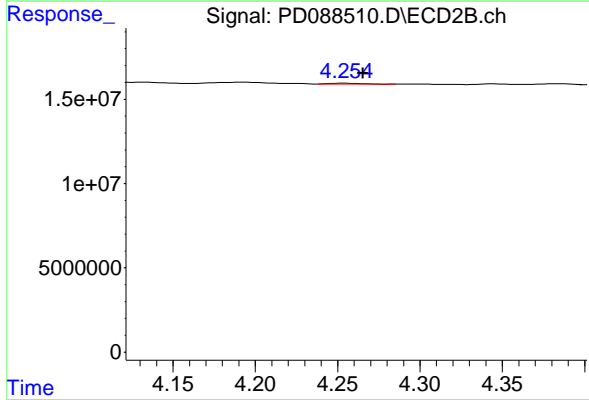
R.T.: 4.388 min
 Delta R.T.: 0.015 min
 Response: 807928
 Conc: 0.04 ng/ml



#7 delta-BHC

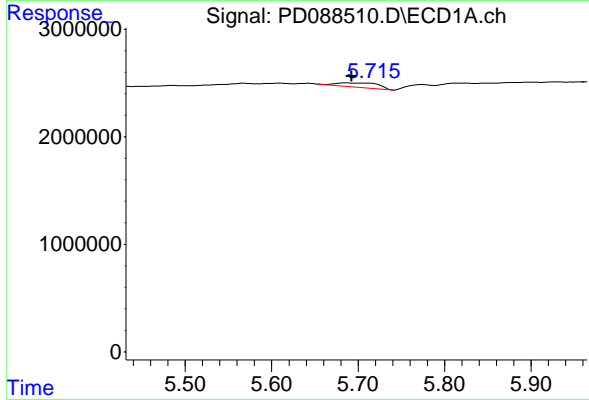
R.T.: 4.780 min
 Delta R.T.: 0.015 min
 Response: 5407424
 Conc: 1.31 ng/ml

Instrument :
 ECD_D
 ClientSampleId :
 PB167851TB



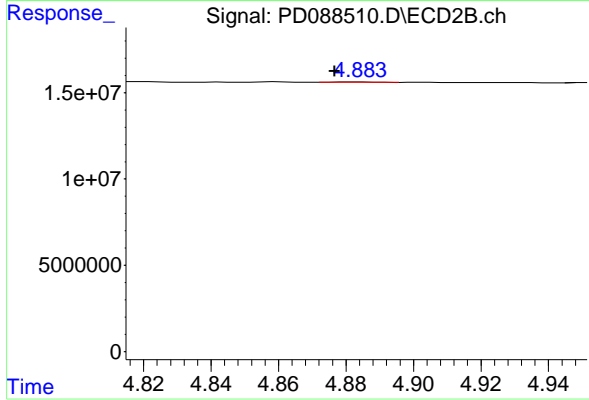
#7 delta-BHC

R.T.: 4.255 min
 Delta R.T.: -0.011 min
 Response: 607949
 Conc: 0.03 ng/ml



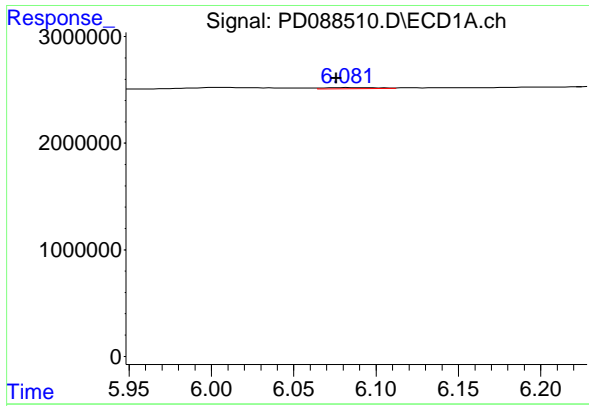
#8 Heptachlor epoxide

R.T.: 5.685 min
 Delta R.T.: -0.007 min
 Response: 1354244
 Conc: 0.38 ng/ml



#8 Heptachlor epoxide

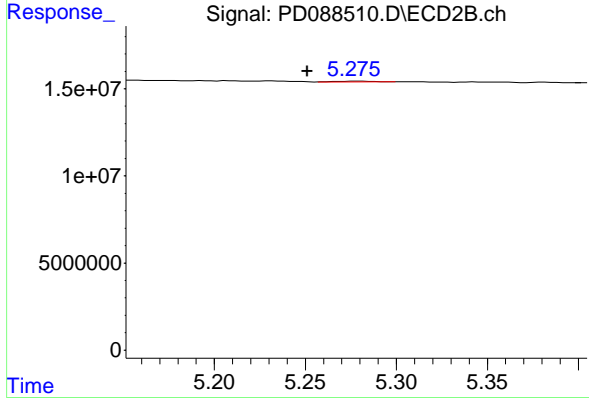
R.T.: 4.884 min
 Delta R.T.: 0.008 min
 Response: 173059
 Conc: 0.01 ng/ml



#9 Endosulfan I

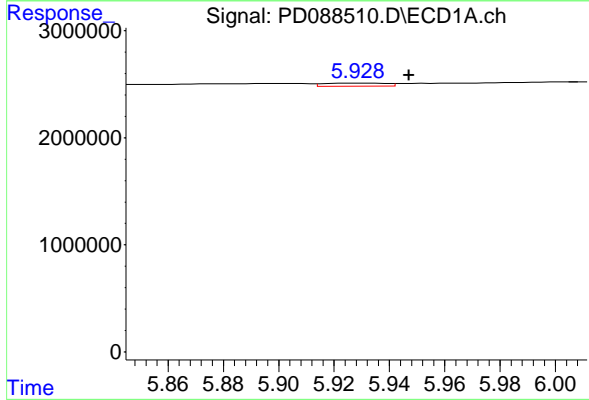
R.T.: 6.082 min
 Delta R.T.: 0.006 min
 Response: 235880
 Conc: 0.07 ng/ml

Instrument : ECD_D
 ClientSampleId : PB167851TB



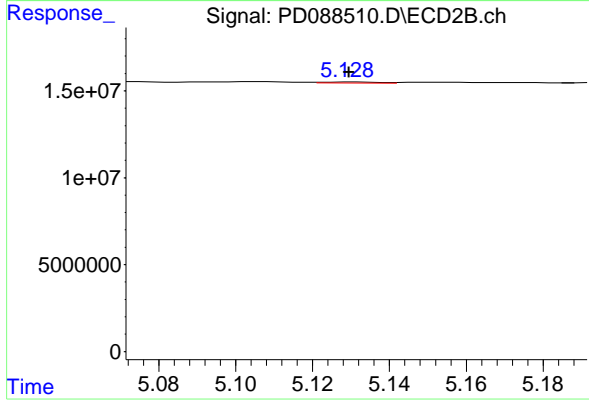
#9 Endosulfan I

R.T.: 5.277 min
 Delta R.T.: 0.026 min
 Response: 522045
 Conc: 0.03 ng/ml



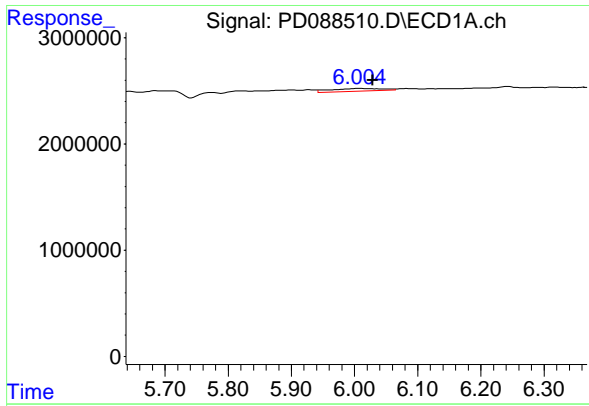
#10 gamma-Chlordane

R.T.: 5.929 min
 Delta R.T.: -0.019 min
 Response: 447554
 Conc: 0.12 ng/ml



#10 gamma-Chlordane

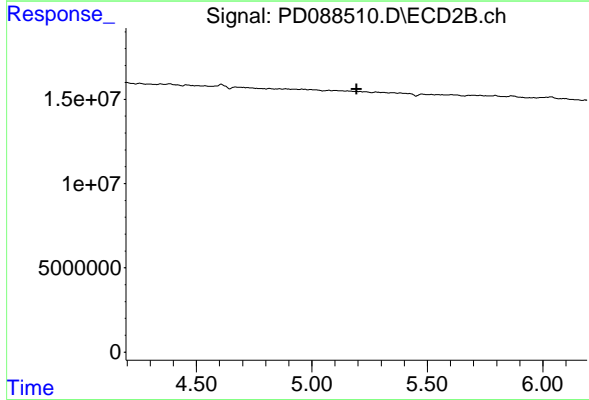
R.T.: 5.130 min
 Delta R.T.: 0.000 min
 Response: 591106
 Conc: 0.03 ng/ml



#11 alpha-Chlordane

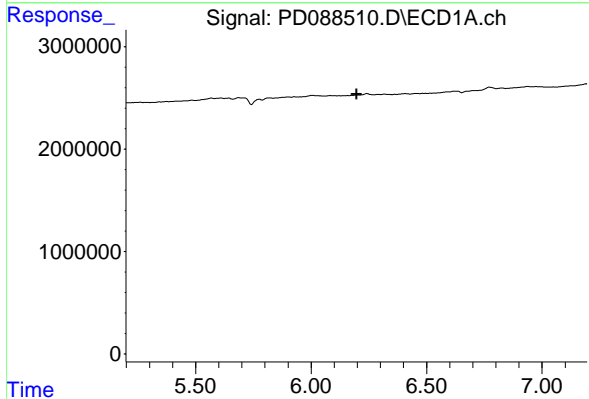
R.T.: 6.005 min
 Delta R.T.: -0.024 min
 Response: 1507798
 Conc: 0.42 ng/ml

Instrument : ECD_D
 ClientSampleId : PB167851TB



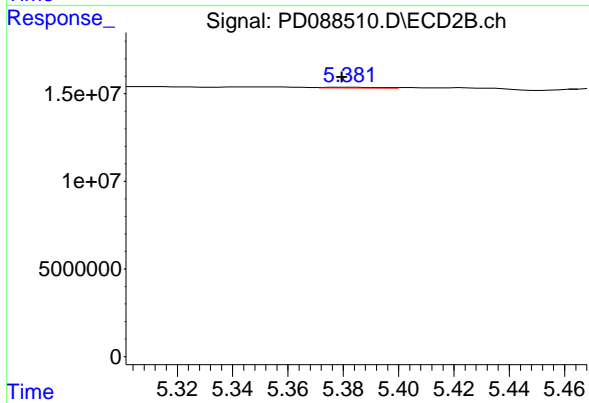
#11 alpha-Chlordane

R.T.: 0.000 min
 Exp R.T. : 5.194 min
 Response: 0
 Conc: N.D.



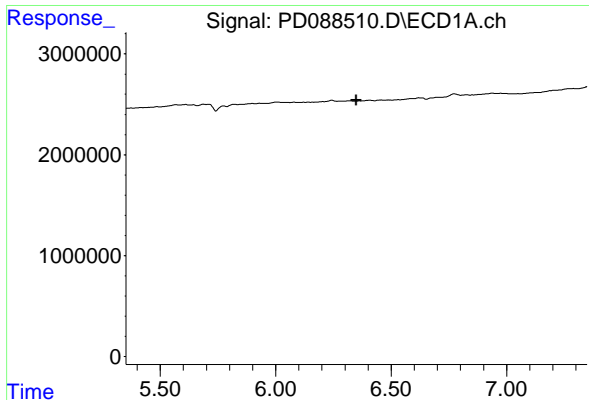
#12 4,4'-DDE

R.T.: 0.000 min
 Exp R.T. : 6.197 min
 Response: 0
 Conc: N.D.



#12 4,4'-DDE

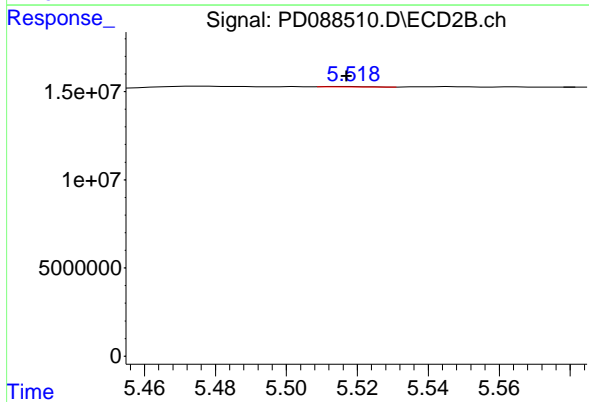
R.T.: 5.382 min
 Delta R.T.: 0.002 min
 Response: 586025
 Conc: 0.03 ng/ml



#13 Dieldrin

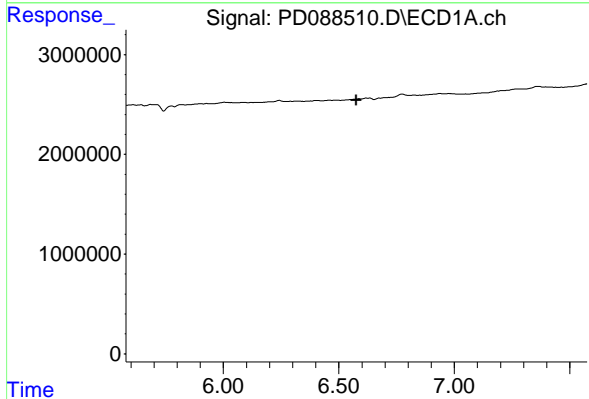
R.T.: 0.000 min
 Exp R.T.: 6.349 min
 Response: 0
 Conc: N.D.

Instrument :
 ECD_D
 ClientSampleId :
 PB167851TB



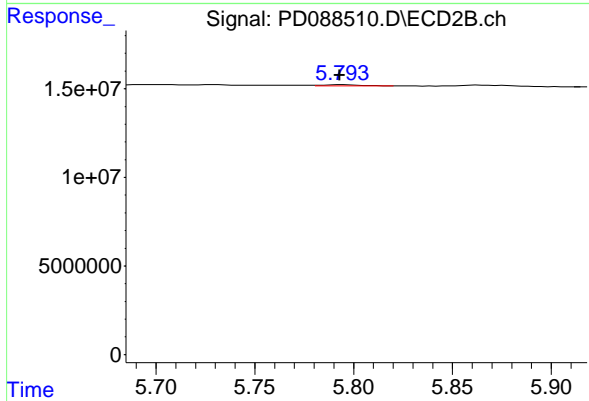
#13 Dieldrin

R.T.: 5.518 min
 Delta R.T.: 0.001 min
 Response: 131190
 Conc: 0.01 ng/ml



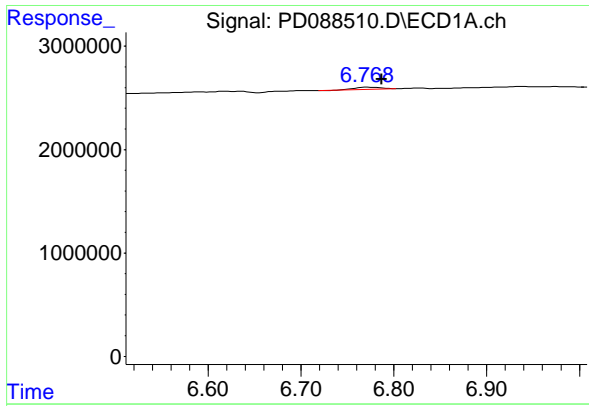
#14 Endrin

R.T.: 0.000 min
 Exp R.T.: 6.576 min
 Response: 0
 Conc: N.D.



#14 Endrin

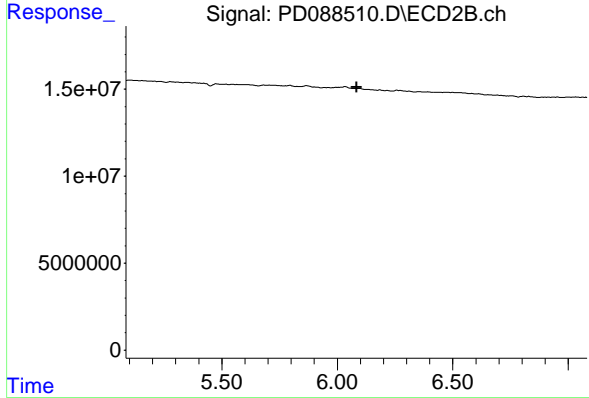
R.T.: 5.795 min
 Delta R.T.: 0.002 min
 Response: 698095
 Conc: 0.04 ng/ml



#15 Endosulfan II

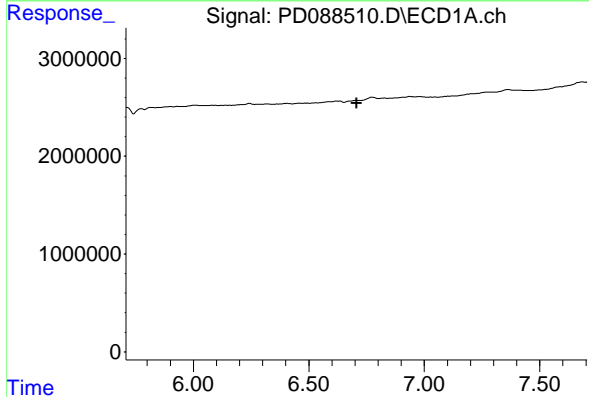
R.T.: 6.771 min
 Delta R.T.: -0.016 min
 Response: 441622
 Conc: 0.14 ng/ml

Instrument :
 ECD_D
 ClientSampleId :
 PB167851TB



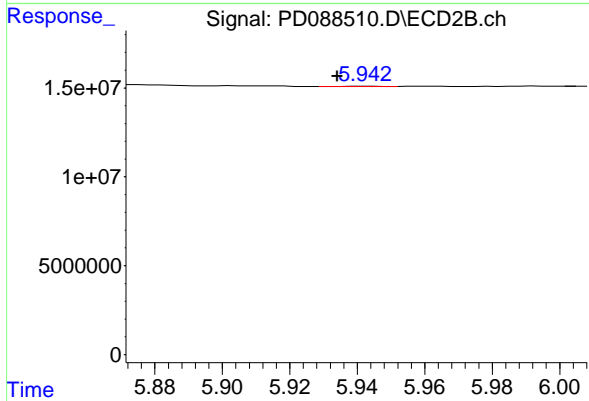
#15 Endosulfan II

R.T.: 0.000 min
 Exp R.T. : 6.084 min
 Response: 0
 Conc: N.D.



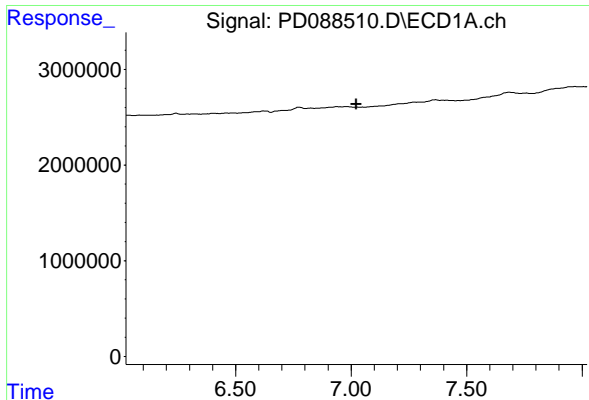
#16 4,4'-DDD

R.T.: 0.000 min
 Exp R.T. : 6.706 min
 Response: 0
 Conc: N.D.



#16 4,4'-DDD

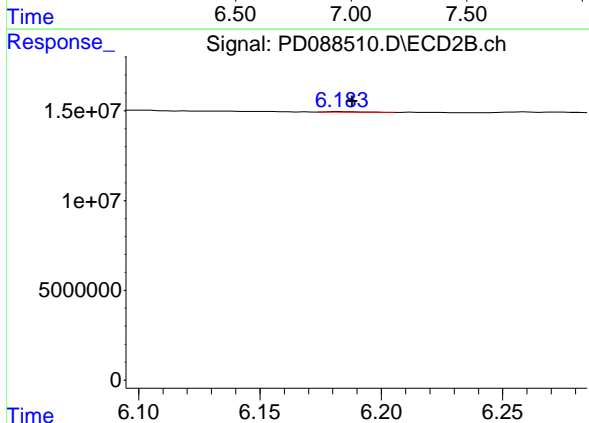
R.T.: 5.943 min
 Delta R.T.: 0.009 min
 Response: 143009
 Conc: 0.01 ng/ml



#17 4,4'-DDT

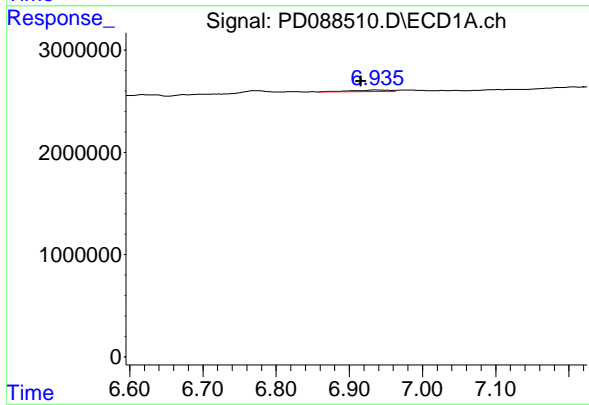
R.T.: 0.000 min
 Exp R.T.: 7.022 min
 Response: 0
 Conc: N.D.

Instrument :
 ECD_D
 ClientSampleId :
 PB167851TB



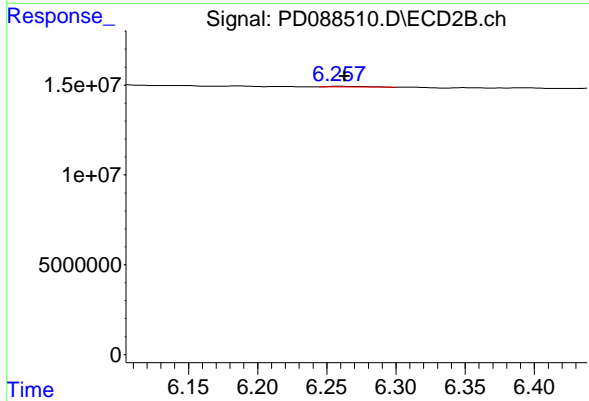
#17 4,4'-DDT

R.T.: 6.184 min
 Delta R.T.: -0.004 min
 Response: 298457
 Conc: 0.02 ng/ml



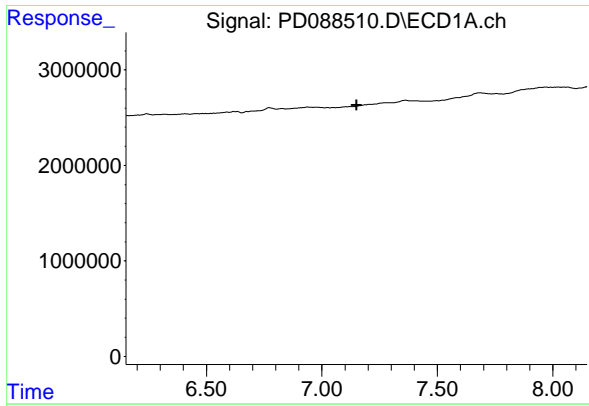
#18 Endrin aldehyde

R.T.: 6.937 min
 Delta R.T.: 0.021 min
 Response: 513118
 Conc: 0.22 ng/ml



#18 Endrin aldehyde

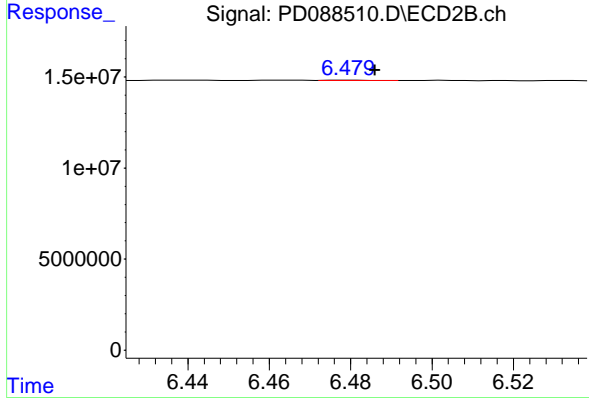
R.T.: 6.258 min
 Delta R.T.: -0.005 min
 Response: 822224
 Conc: 0.06 ng/ml



#19 Endosulfan Sulfate

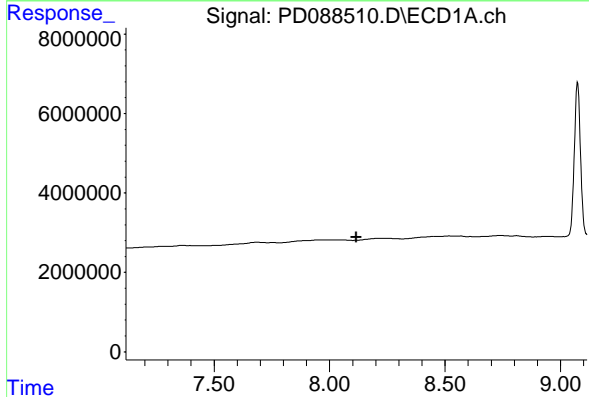
R.T.: 0.000 min
 Exp R.T.: 7.150 min
 Response: 0
 Conc: N.D.

Instrument :
 ECD_D
 ClientSampleId :
 PB167851TB



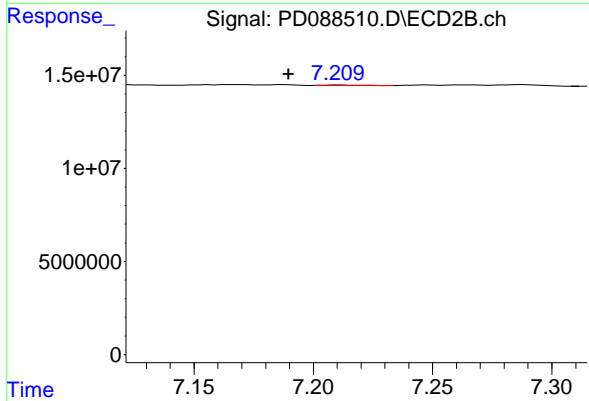
#19 Endosulfan Sulfate

R.T.: 6.480 min
 Delta R.T.: -0.006 min
 Response: 181748
 Conc: 0.01 ng/ml



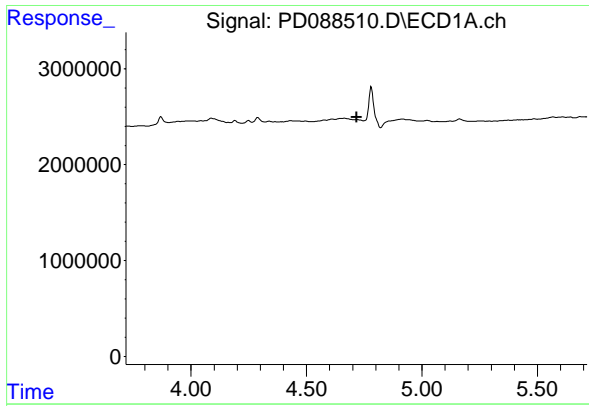
#22 Mirex

R.T.: 0.000 min
 Exp R.T.: 8.115 min
 Response: 0
 Conc: N.D.



#22 Mirex

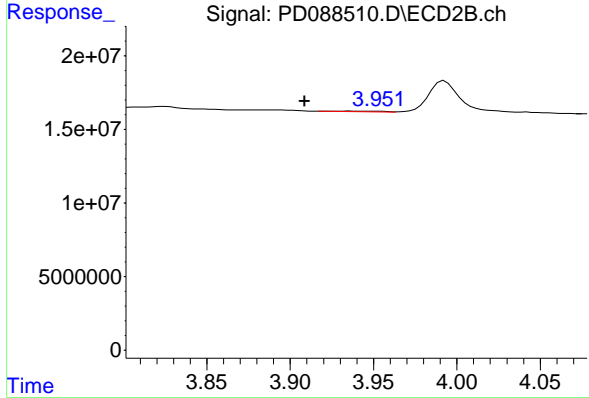
R.T.: 7.211 min
 Delta R.T.: 0.022 min
 Response: 246626
 Conc: 0.02 ng/ml



#23 Chlordane-1

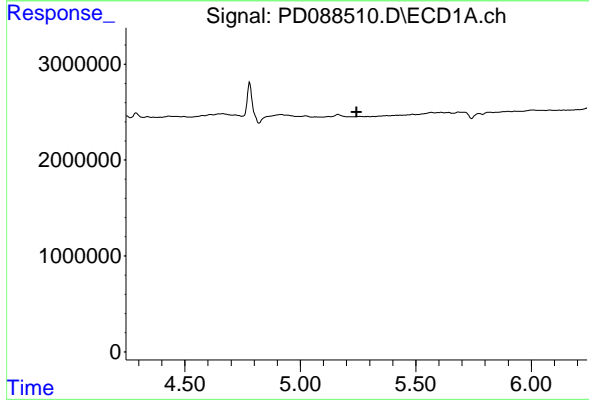
R.T.: 0.000 min
 Exp R.T.: 4.717 min
 Response: 0
 Conc: N.D.

Instrument :
 ECD_D
 ClientSampleId :
 PB167851TB



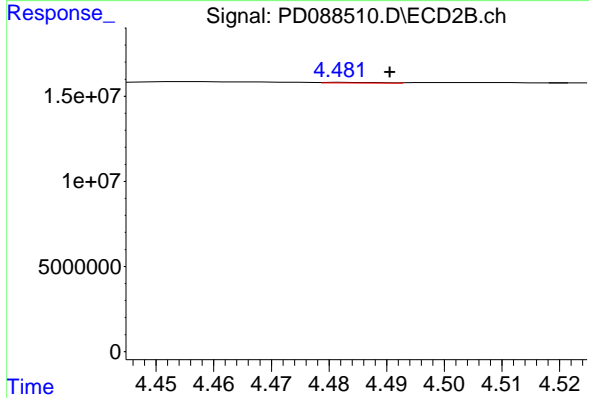
#23 Chlordane-1

R.T.: 3.935 min
 Delta R.T.: 0.026 min
 Response: 822268
 Conc: 1.03 ng/ml



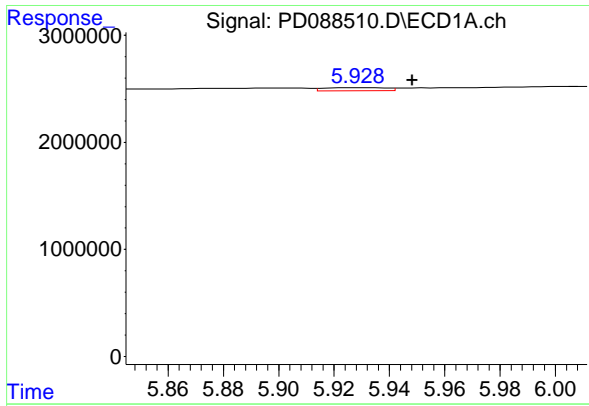
#24 Chlordane-2

R.T.: 0.000 min
 Exp R.T.: 5.243 min
 Response: 0
 Conc: N.D.



#24 Chlordane-2

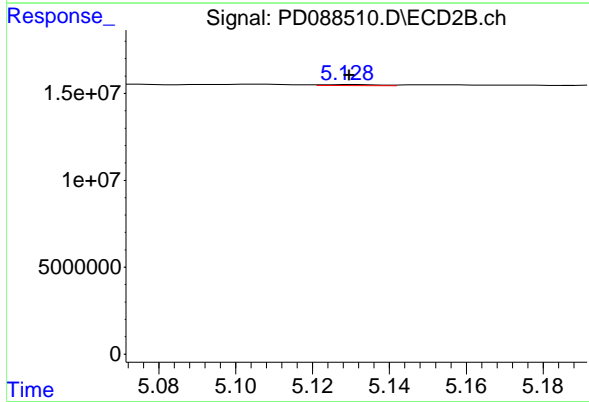
R.T.: 4.483 min
 Delta R.T.: -0.007 min
 Response: 314823
 Conc: 0.38 ng/ml



#25 Chlordane-3

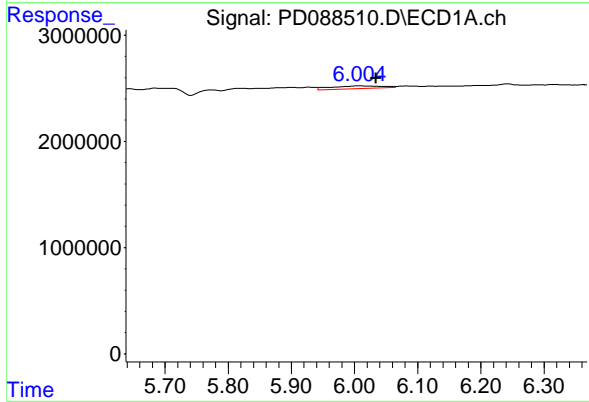
R.T.: 5.929 min
 Delta R.T.: -0.020 min
 Response: 447554
 Conc: 0.66 ng/ml

Instrument :
 ECD_D
 ClientSampleId :
 PB167851TB



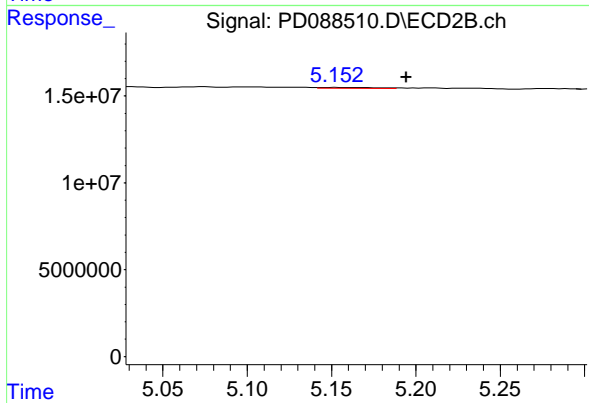
#25 Chlordane-3

R.T.: 5.130 min
 Delta R.T.: 0.000 min
 Response: 591106
 Conc: 0.23 ng/ml



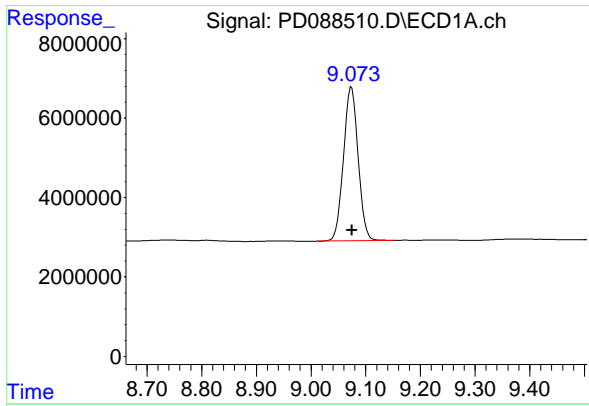
#26 Chlordane-4

R.T.: 6.005 min
 Delta R.T.: -0.029 min
 Response: 1507798
 Conc: 1.85 ng/ml



#26 Chlordane-4

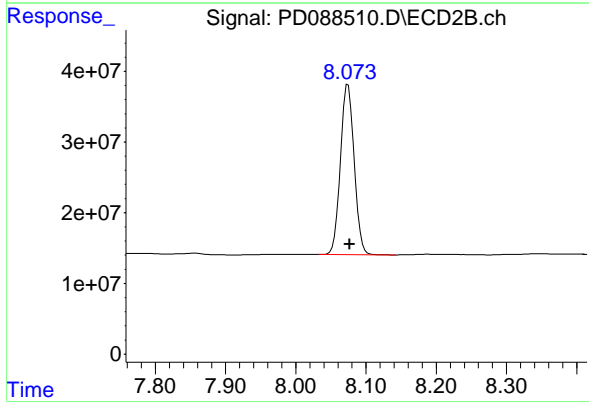
R.T.: 5.153 min
 Delta R.T.: -0.041 min
 Response: 1305582
 Conc: 0.61 ng/ml



#28 Decachlorobiphenyl

R.T.: 9.074 min
Delta R.T.: 0.000 min
Response: 71932047
Conc: 21.74 ng/ml

Instrument :
ECD_D
ClientSampleId :
PB167851TB



#28 Decachlorobiphenyl

R.T.: 8.074 min
Delta R.T.: -0.002 min
Response: 326369834
Conc: 17.66 ng/ml