

Data Path : Z:\pestpcbsrv\HPCHEM1\ECD_D\Data\PD051325\
 Data File : PD088532.D
 Signal(s) : Signal #1: ECD1A.ch Signal #2: ECD2B.ch
 Acq On : 13 May 2025 18:38
 Operator : AR\AJ
 Sample : Q2014-01
 Misc :
 ALS Vial : 33 Sample Multiplier: 1

Instrument :
 ECD_D
 ClientSampleId :
 MOO-25-0134

Integration File signal 1: autoint1.e
 Integration File signal 2: autoint2.e
 Quant Time: May 13 22:46:34 2025
 Quant Method : Z:\pestpcbsrv\HPCHEM1\ECD_D\Method\PD041825.M
 Quant Title : GC Extractables
 QLast Update : Sat Apr 19 06:32:27 2025
 Response via : Initial Calibration
 Integrator: ChemStation

Volume Inj. : 1 µl
 Signal #1 Phase : ZB-MR1 Signal #2 Phase: ZB-MR2
 Signal #1 Info : 30M x 0.32mm x0.5 Signal #2 Info : 30M x 0.32mm x 0.25µm

Compound	RT#1	RT#2	Resp#1	Resp#2	ng/ml	ng/ml

System Monitoring Compounds						
1) SA Tetrachlo...	3.552	2.884	15373409	103.9E6	7.697	7.103
28) SA Decachlor...	9.073	8.074	40502994	173.7E6	12.244	9.398
Target Compounds						
2) A alpha-BHC	0.000	3.414f	0	7606803	N.D.	0.333 #
3) MA gamma-BHC...	0.000	3.706f	0	8123991	N.D.	0.377 #
4) MA Heptachlor	0.000	4.105f	0	3979183	N.D.	0.186 #
5) MB Aldrin	0.000	4.348f	0	5764998	N.D.	0.277 #
6) B beta-BHC	0.000	4.042	0	3856726	N.D.	0.417 #
7) B delta-BHC	4.780	4.239f	2332077	5002179	0.565	0.235 #
9) A Endosulfan I	0.000	5.250	0	3463533	N.D.	0.192 #
10) B gamma-Chl...	5.948	5.153f	497453	8455782	0.137	0.417 #
11) B alpha-Chl...	6.030	5.192	2551940	6045951	0.707	0.308 #
12) B 4,4'-DDE	6.198	5.378	979216	8472550	0.297	0.430 #
13) MA Dieldrin	0.000	5.512	0	1194976	N.D.	0.060 #
14) MA Endrin	0.000	5.796	0	1092896	N.D.	0.060 #
15) B Endosulfa...	6.779	6.095	1071320	4265456	0.343	0.243 #
17) MA 4,4'-DDT	7.021	6.185	1666741	6952054	0.600	0.409 #
19) B Endosulfa...	0.000	6.487	0	2110430	N.D.	0.123 #
22) Mirex	8.115	7.186	-225184	2193338	N.D.	0.148
23) Chlordane-1	4.716	3.915	794527	15156026	4.782	18.905 #
24) Chlordane-2	5.237	4.489	393470	1621244	2.363	1.964
25) Chlordane-3	5.948	5.153f	497453	8455782	0.737	3.343 #
26) Chlordane-4	6.030	5.192	2551940	6045951	3.130	2.828
27) Chlordane-5	0.000	6.095	0	4265456	N.D.	4.418 #

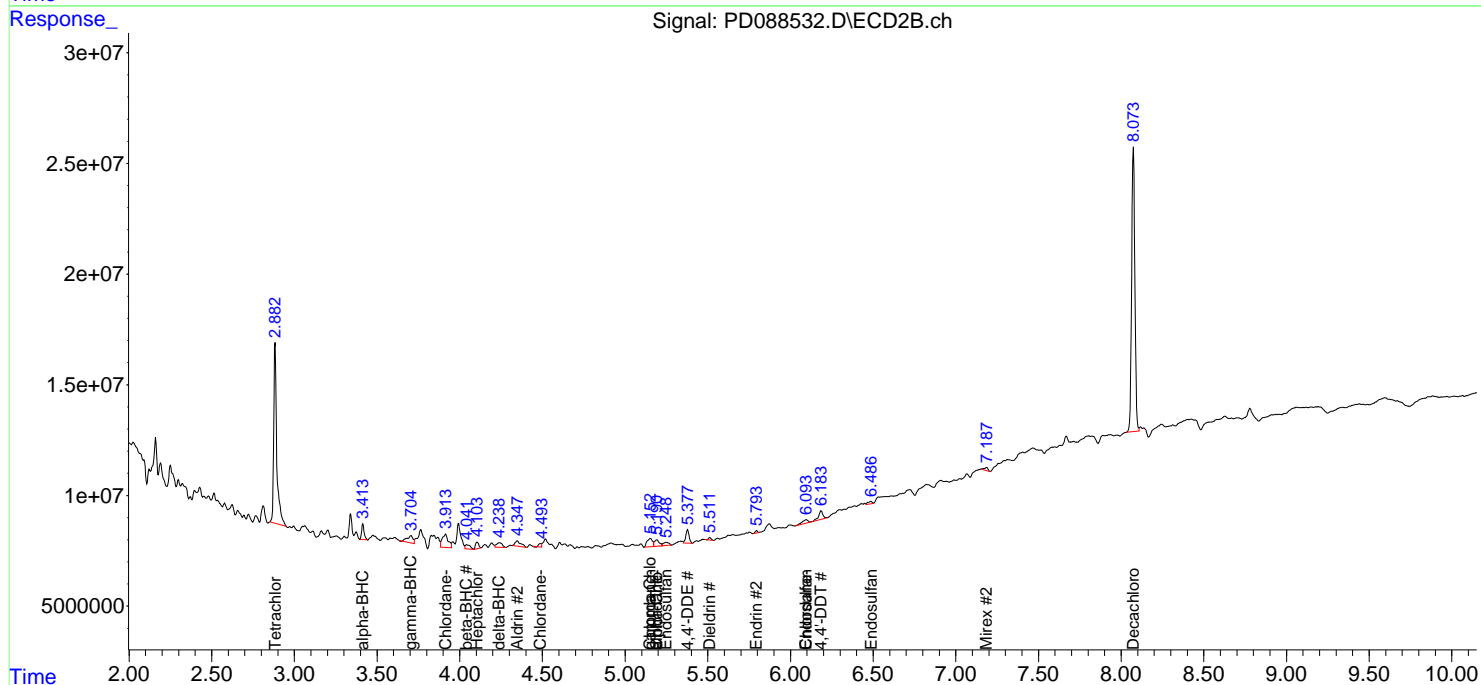
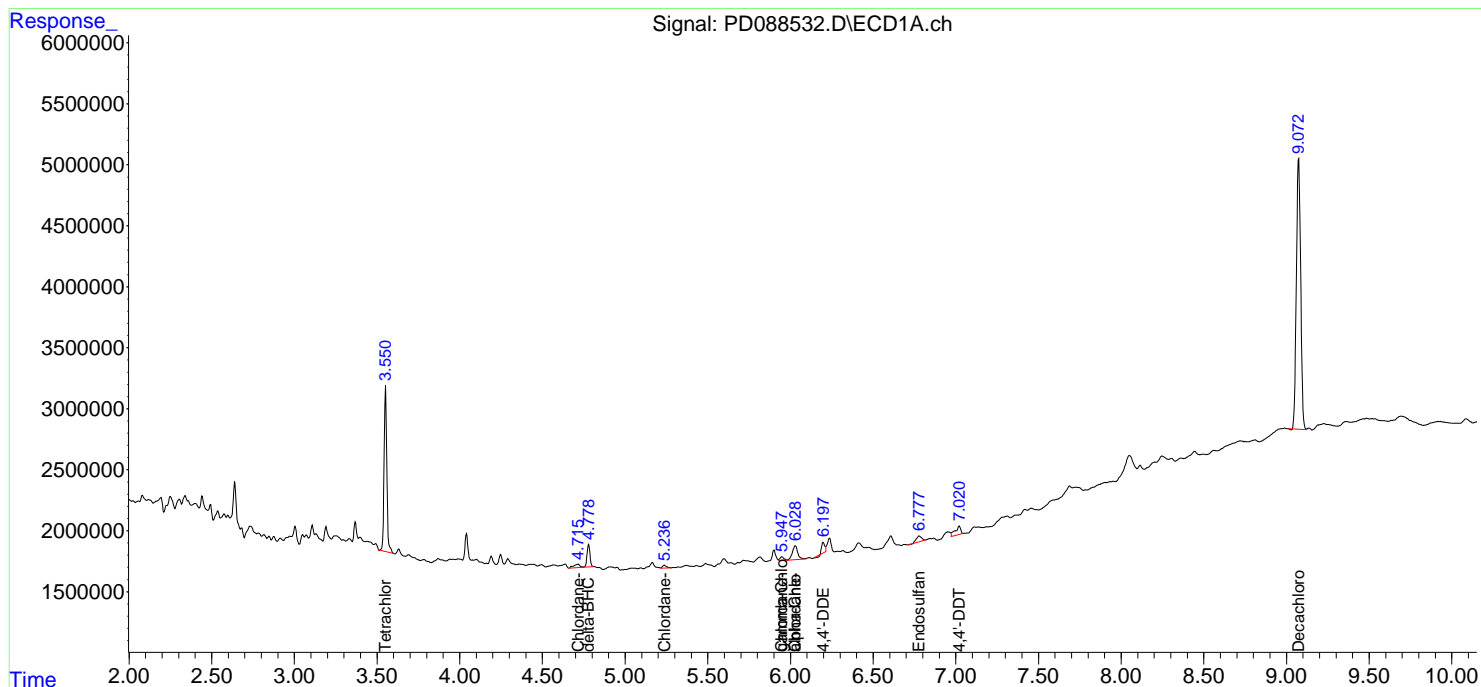
(f)=RT Delta > 1/2 Window (#)=Amounts differ by > 25% (m)=manual int.

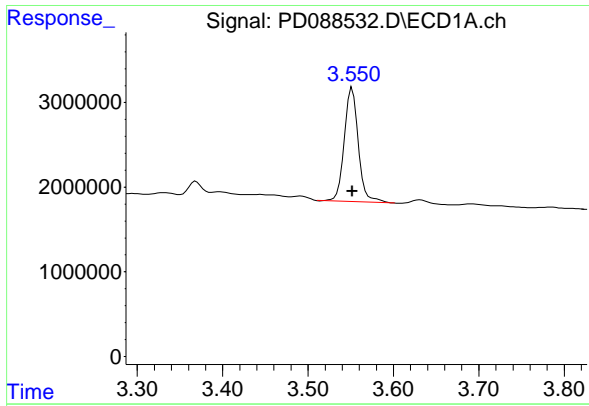
Data Path : Z:\pestpcbsrv\HPCHEM1\ECD_D\Data\PD051325\
 Data File : PD088532.D
 Signal(s) : Signal #1: ECD1A.ch Signal #2: ECD2B.ch
 Acq On : 13 May 2025 18:38
 Operator : AR\AJ
 Sample : Q2014-01
 Misc :
 ALS Vial : 33 Sample Multiplier: 1

Instrument :
 ECD_D
 ClientSampleId :
 MOO-25-0134

Integration File signal 1: autoint1.e
 Integration File signal 2: autoint2.e
 Quant Time: May 13 22:46:34 2025
 Quant Method : Z:\pestpcbsrv\HPCHEM1\ECD_D\Method\PD041825.M
 Quant Title : GC Extractables
 QLast Update : Sat Apr 19 06:32:27 2025
 Response via : Initial Calibration
 Integrator: ChemStation

Volume Inj. : 1 µl
 Signal #1 Phase : ZB-MR1 Signal #2 Phase: ZB-MR2
 Signal #1 Info : 30M x 0.32mm x 0.5 Signal #2 Info : 30M x 0.32mm x 0.25µm

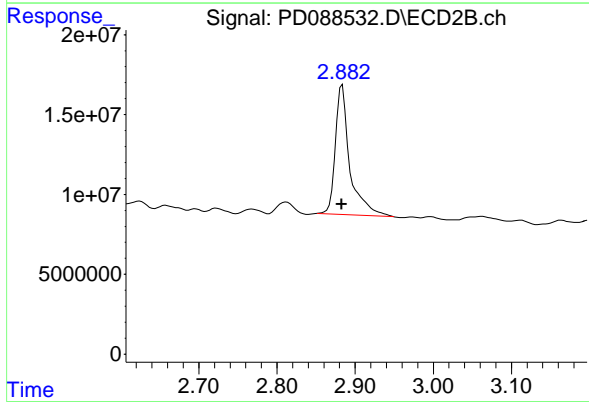




#1 Tetrachloro-m-xylene

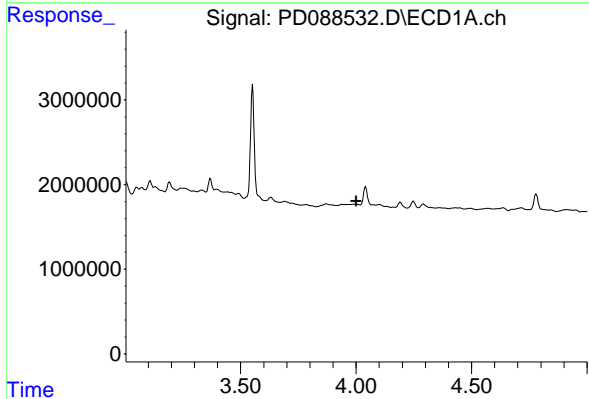
R.T.: 3.552 min
 Delta R.T.: 0.000 min
 Response: 15373409
 Conc: 7.70 ng/ml

Instrument :
 ECD_D
 ClientSampleId :
 MOO-25-0134



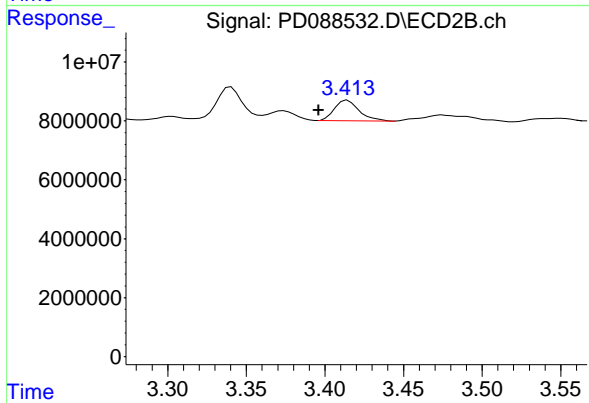
#1 Tetrachloro-m-xylene

R.T.: 2.884 min
 Delta R.T.: 0.000 min
 Response: 103864438
 Conc: 7.10 ng/ml



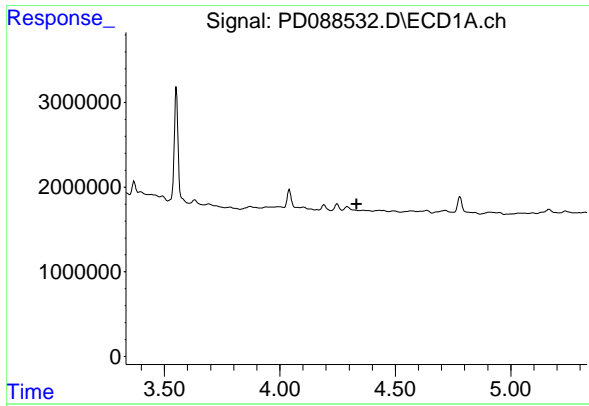
#2 alpha-BHC

R.T.: 0.000 min
 Exp R.T. : 4.001 min
 Response: 0
 Conc: N.D.



#2 alpha-BHC

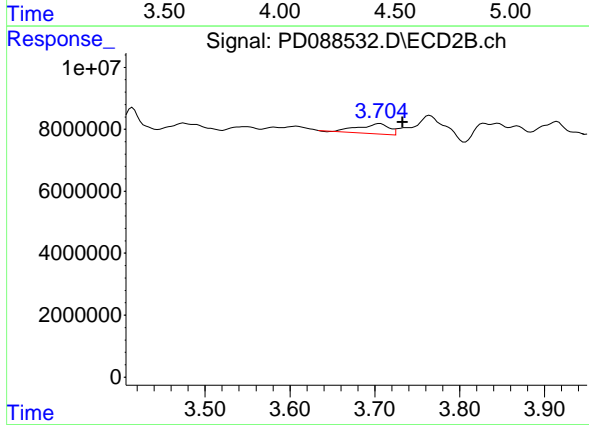
R.T.: 3.414 min
 Delta R.T.: 0.018 min
 Response: 7606803
 Conc: 0.33 ng/ml



#3 gamma-BHC (Lindane)

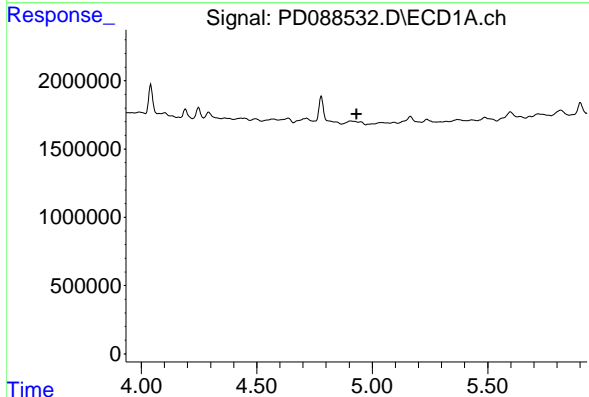
R.T.: 0.000 min
 Exp R.T.: 4.332 min
 Response: 0
 Conc: N.D.

Instrument :
 ECD_D
 ClientSampleId :
 MOO-25-0134



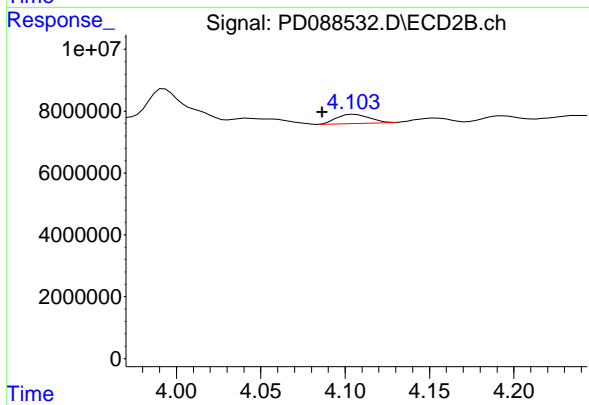
#3 gamma-BHC (Lindane)

R.T.: 3.706 min
 Delta R.T.: -0.027 min
 Response: 8123991
 Conc: 0.38 ng/ml



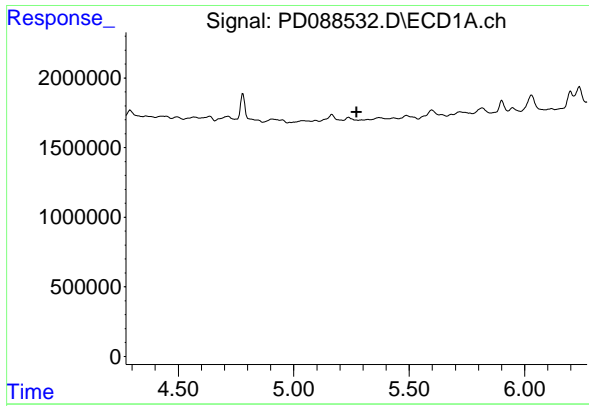
#4 Heptachlor

R.T.: 0.000 min
 Exp R.T.: 4.931 min
 Response: 0
 Conc: N.D.



#4 Heptachlor

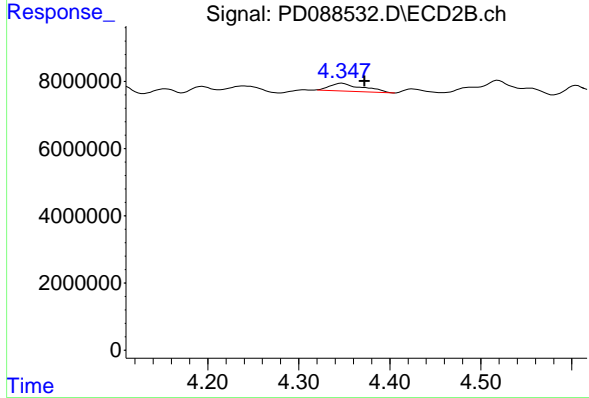
R.T.: 4.105 min
 Delta R.T.: 0.019 min
 Response: 3979183
 Conc: 0.19 ng/ml



#5 Aldrin

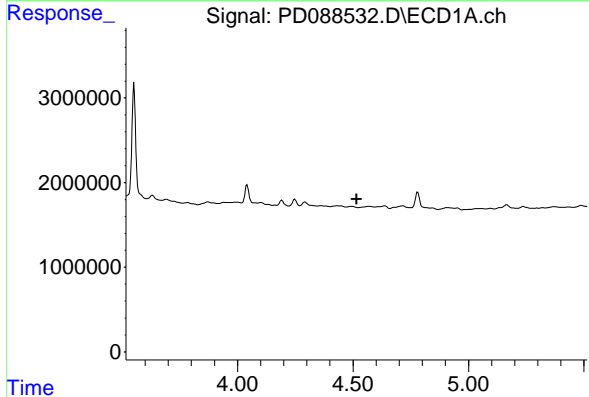
R.T.: 0.000 min
 Exp R.T.: 5.273 min
 Response: 0
 Conc: N.D.

Instrument :
 ECD_D
 ClientSampleId :
 MOO-25-0134



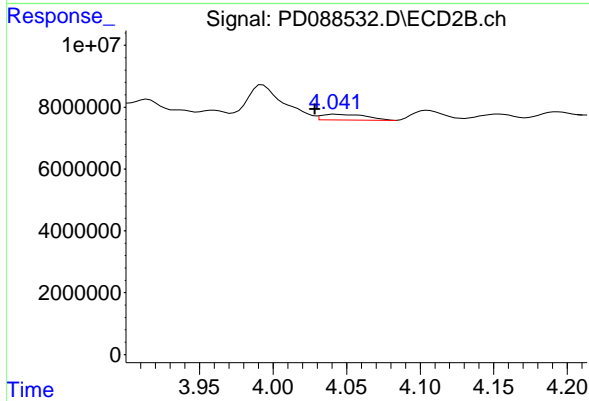
#5 Aldrin

R.T.: 4.348 min
 Delta R.T.: -0.025 min
 Response: 5764998
 Conc: 0.28 ng/ml



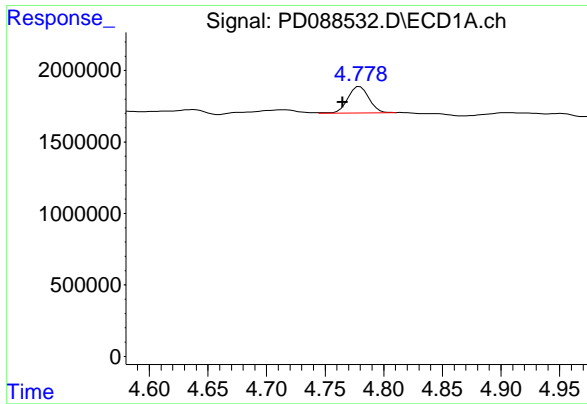
#6 beta-BHC

R.T.: 0.000 min
 Exp R.T.: 4.516 min
 Response: 0
 Conc: N.D.



#6 beta-BHC

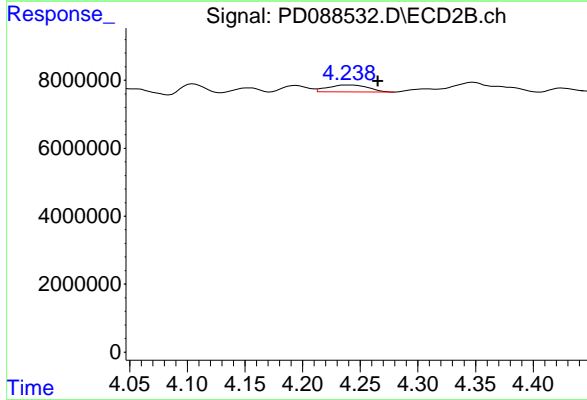
R.T.: 4.042 min
 Delta R.T.: 0.014 min
 Response: 3856726
 Conc: 0.42 ng/ml



#7 delta-BHC

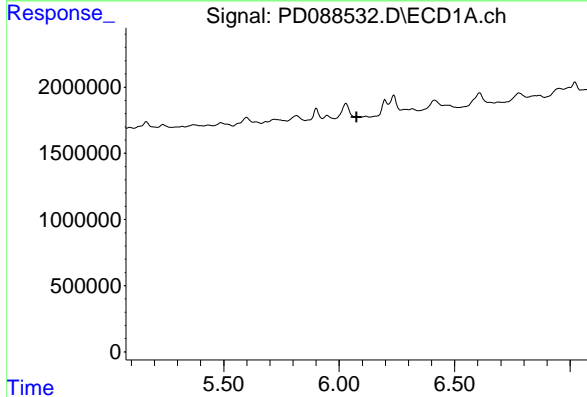
R.T.: 4.780 min
 Delta R.T.: 0.015 min
 Response: 2332077
 Conc: 0.57 ng/ml

Instrument :
 ECD_D
 ClientSampleId :
 MOO-25-0134



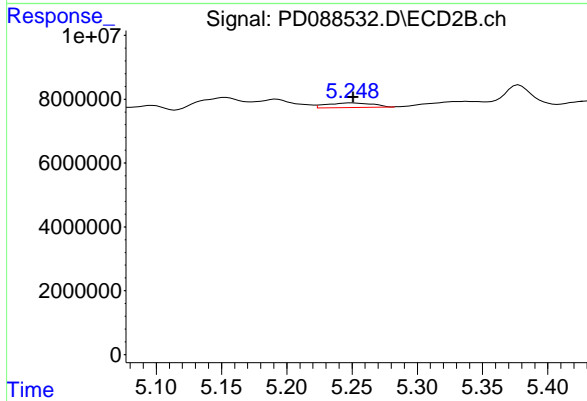
#7 delta-BHC

R.T.: 4.239 min
 Delta R.T.: -0.026 min
 Response: 5002179
 Conc: 0.24 ng/ml



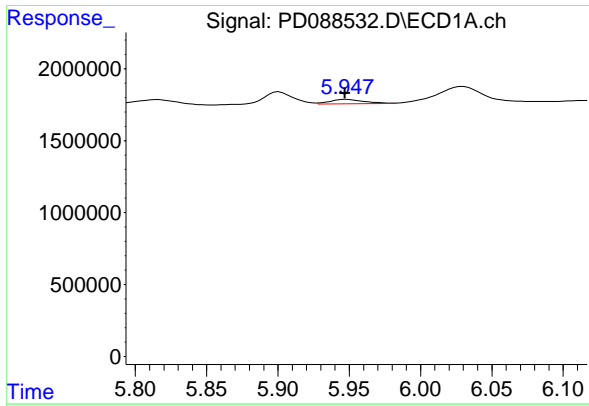
#9 Endosulfan I

R.T.: 0.000 min
 Exp R.T. : 6.076 min
 Response: 0
 Conc: N.D.



#9 Endosulfan I

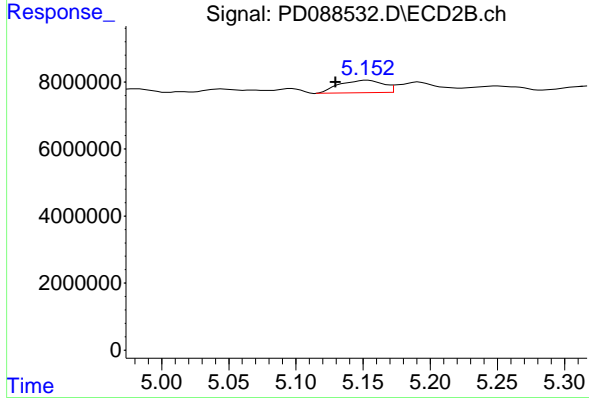
R.T.: 5.250 min
 Delta R.T.: -0.001 min
 Response: 3463533
 Conc: 0.19 ng/ml



#10 gamma-Chlordane

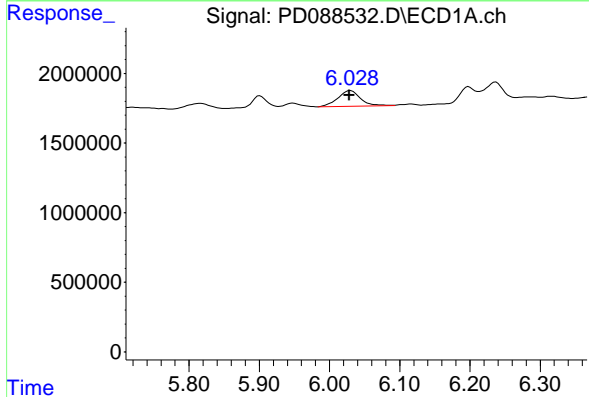
R.T.: 5.948 min
 Delta R.T.: 0.001 min
 Response: 497453
 Conc: 0.14 ng/ml

Instrument :
 ECD_D
 ClientSampleId :
 MOO-25-0134



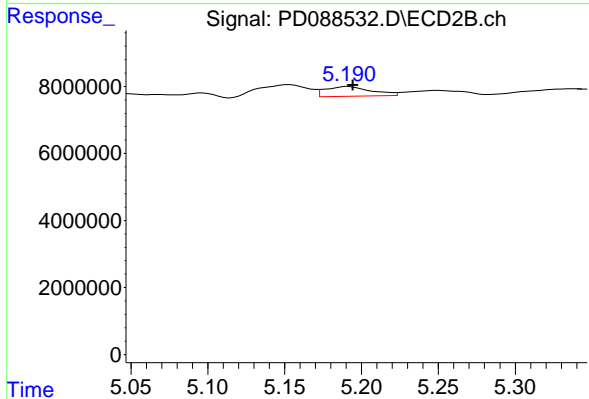
#10 gamma-Chlordane

R.T.: 5.153 min
 Delta R.T.: 0.024 min
 Response: 8455782
 Conc: 0.42 ng/ml



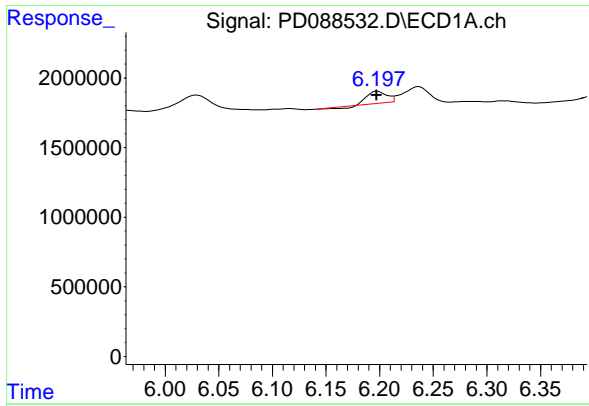
#11 alpha-Chlordane

R.T.: 6.030 min
 Delta R.T.: 0.001 min
 Response: 2551940
 Conc: 0.71 ng/ml



#11 alpha-Chlordane

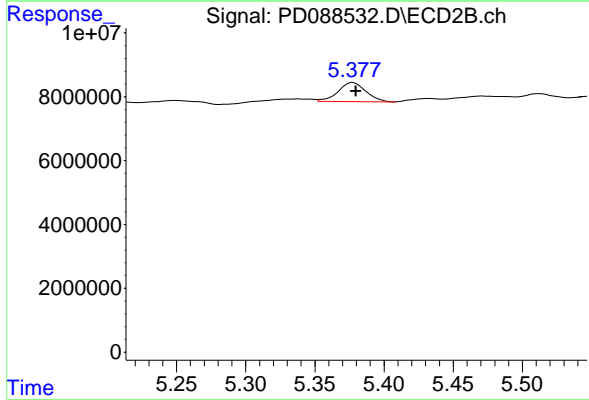
R.T.: 5.192 min
 Delta R.T.: -0.003 min
 Response: 6045951
 Conc: 0.31 ng/ml



#12 4,4' -DDE

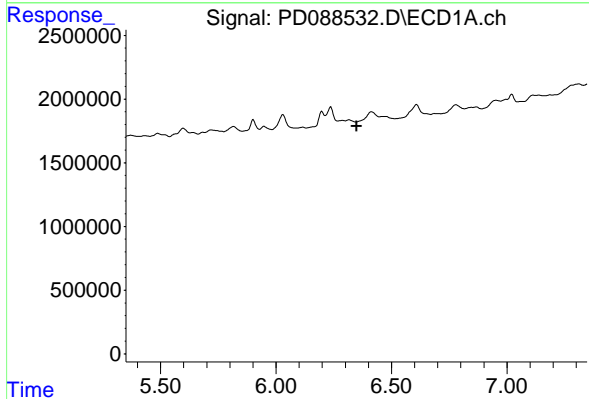
R.T.: 6.198 min
 Delta R.T.: 0.001 min
 Response: 979216
 Conc: 0.30 ng/ml

Instrument : ECD_D
 ClientSampleId : MOO-25-0134



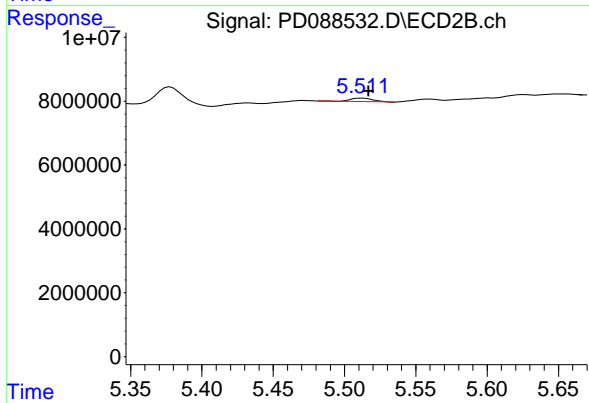
#12 4,4' -DDE

R.T.: 5.378 min
 Delta R.T.: -0.002 min
 Response: 8472550
 Conc: 0.43 ng/ml



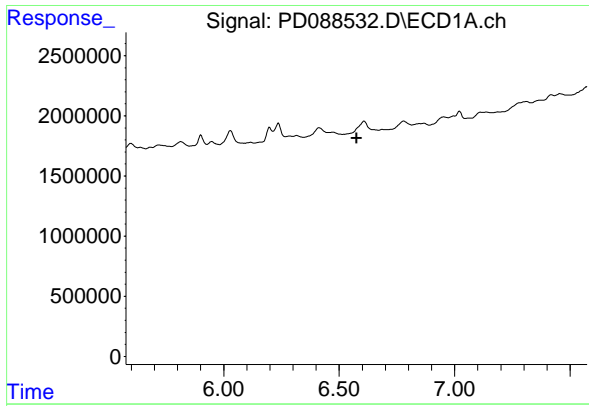
#13 Dieldrin

R.T.: 0.000 min
 Exp R.T. : 6.349 min
 Response: 0
 Conc: N.D.



#13 Dieldrin

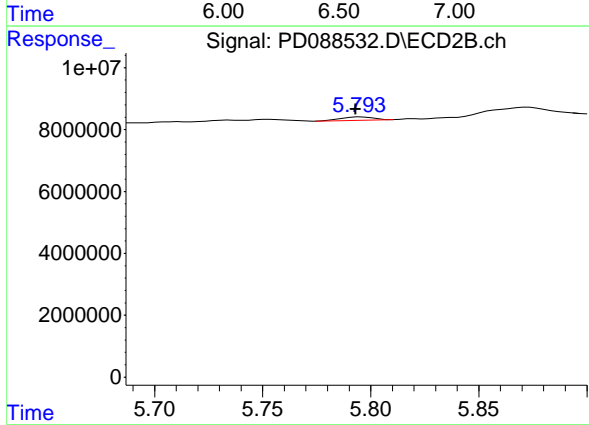
R.T.: 5.512 min
 Delta R.T.: -0.004 min
 Response: 1194976
 Conc: 0.06 ng/ml



#14 Endrin

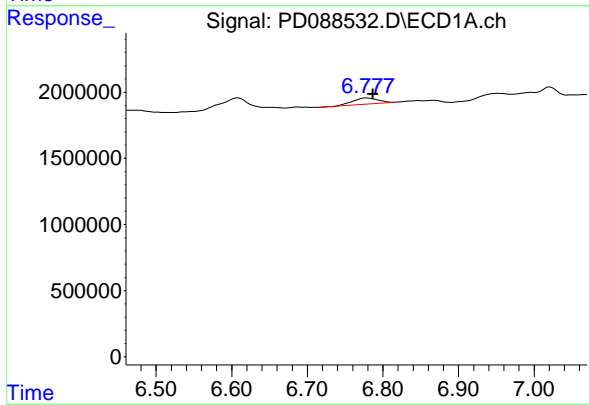
R.T.: 0.000 min
 Exp R.T.: 6.576 min
 Response: 0
 Conc: N.D.

Instrument :
 ECD_D
 ClientSampleId :
 MOO-25-0134



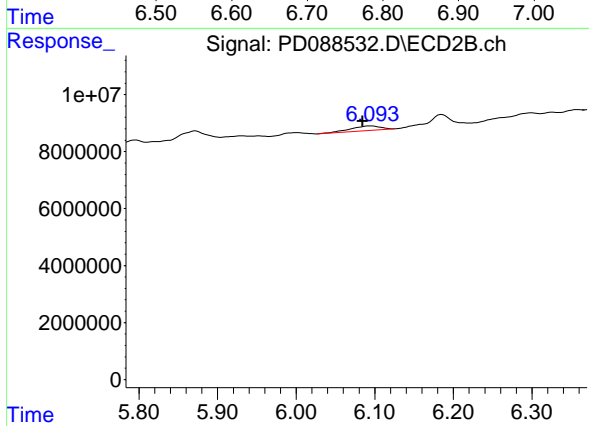
#14 Endrin

R.T.: 5.796 min
 Delta R.T.: 0.003 min
 Response: 1092896
 Conc: 0.06 ng/ml



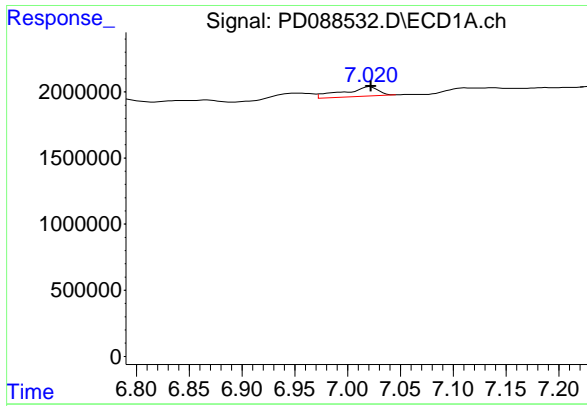
#15 Endosulfan II

R.T.: 6.779 min
 Delta R.T.: -0.008 min
 Response: 1071320
 Conc: 0.34 ng/ml



#15 Endosulfan II

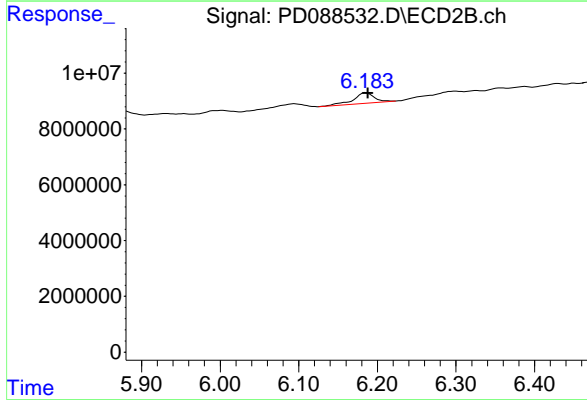
R.T.: 6.095 min
 Delta R.T.: 0.011 min
 Response: 4265456
 Conc: 0.24 ng/ml



#17 4,4' -DDT

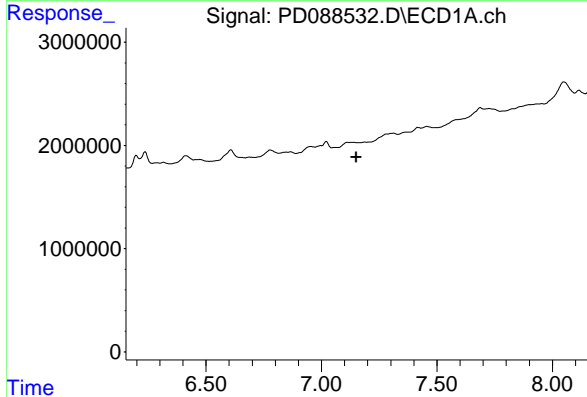
R.T.: 7.021 min
 Delta R.T.: 0.000 min
 Response: 1666741
 Conc: 0.60 ng/ml

Instrument : ECD_D
 ClientSampleId : MOO-25-0134



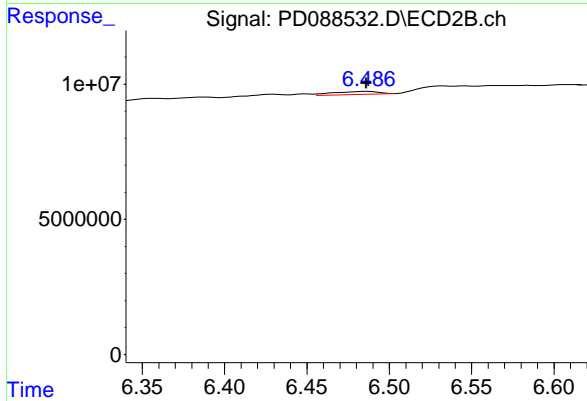
#17 4,4' -DDT

R.T.: 6.185 min
 Delta R.T.: -0.003 min
 Response: 6952054
 Conc: 0.41 ng/ml



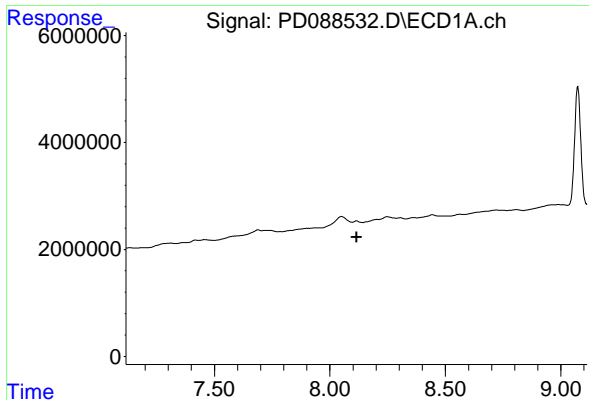
#19 Endosulfan Sulfate

R.T.: 0.000 min
 Exp R.T. : 7.150 min
 Response: 0
 Conc: N.D.



#19 Endosulfan Sulfate

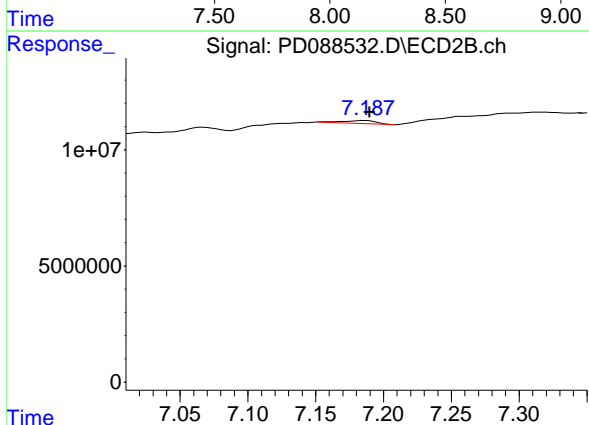
R.T.: 6.487 min
 Delta R.T.: 0.001 min
 Response: 2110430
 Conc: 0.12 ng/ml



#22 Mirex

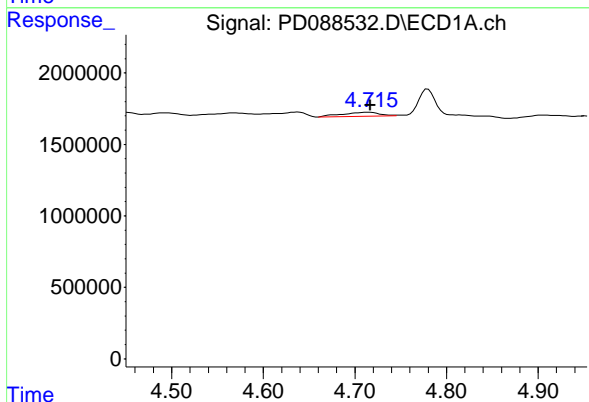
R.T.: 8.115 min
 Delta R.T.: 0.000 min
 Response: -225184
 Conc: N.D.

Instrument : ECD_D
 ClientSampleId : MOO-25-0134



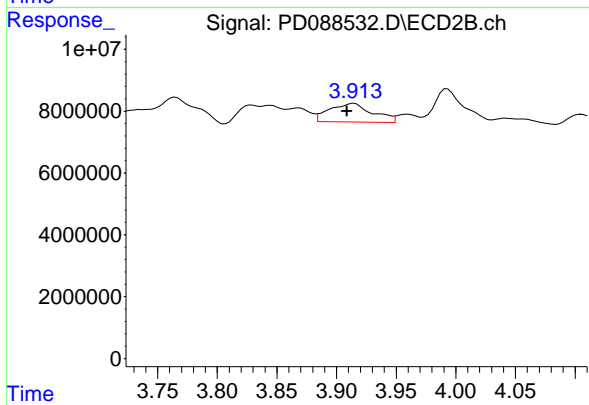
#22 Mirex

R.T.: 7.186 min
 Delta R.T.: -0.004 min
 Response: 2193338
 Conc: 0.15 ng/ml



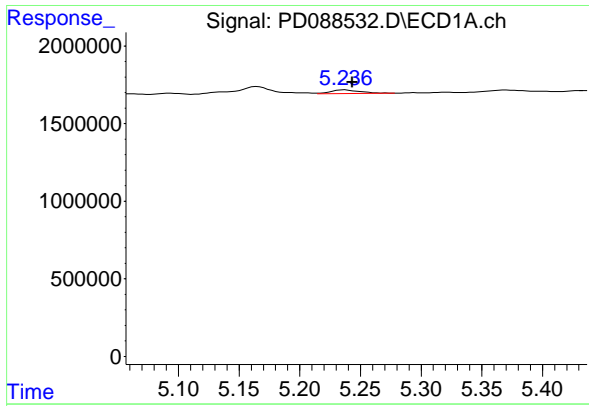
#23 Chlordane-1

R.T.: 4.716 min
 Delta R.T.: 0.000 min
 Response: 794527
 Conc: 4.78 ng/ml



#23 Chlordane-1

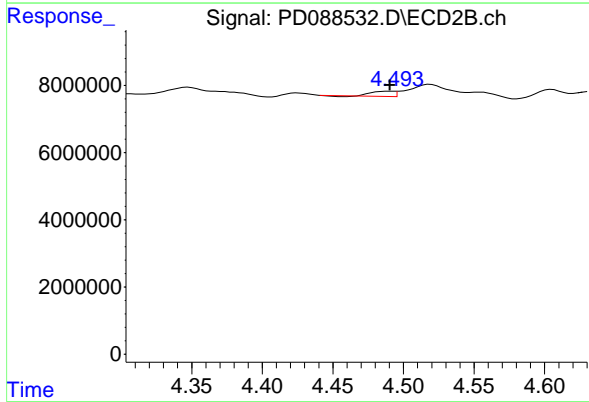
R.T.: 3.915 min
 Delta R.T.: 0.006 min
 Response: 15156026
 Conc: 18.90 ng/ml



#24 Chlordane-2

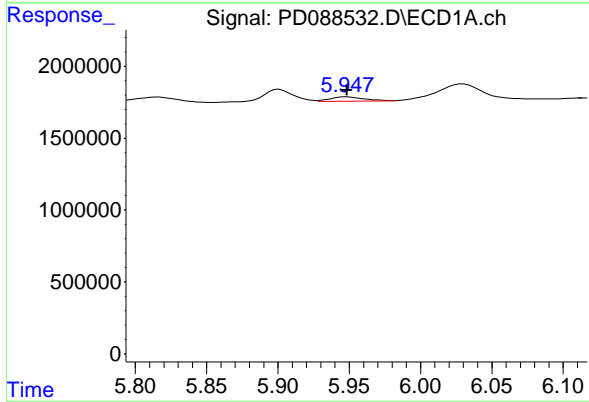
R.T.: 5.237 min
 Delta R.T.: -0.006 min
 Response: 393470
 Conc: 2.36 ng/ml

Instrument : ECD_D
 ClientSampleId : MOO-25-0134



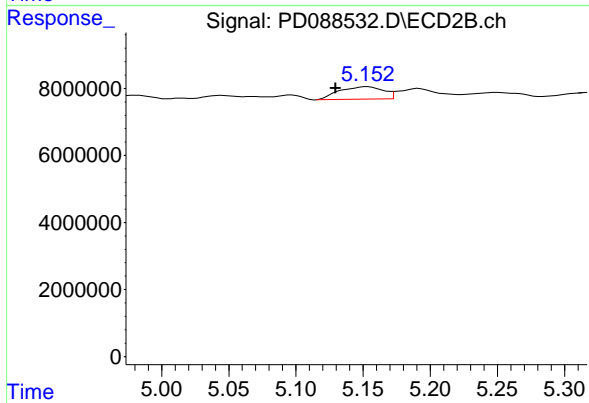
#24 Chlordane-2

R.T.: 4.489 min
 Delta R.T.: -0.002 min
 Response: 1621244
 Conc: 1.96 ng/ml



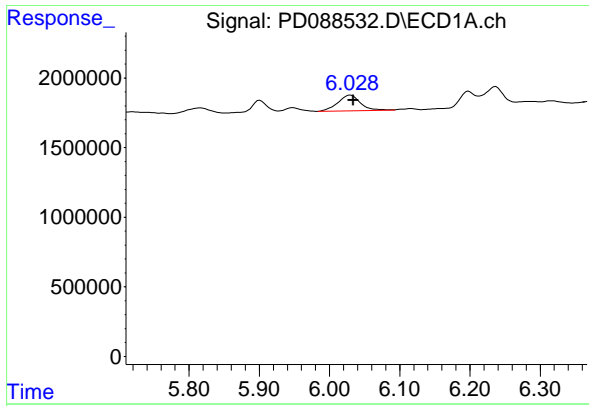
#25 Chlordane-3

R.T.: 5.948 min
 Delta R.T.: 0.000 min
 Response: 497453
 Conc: 0.74 ng/ml



#25 Chlordane-3

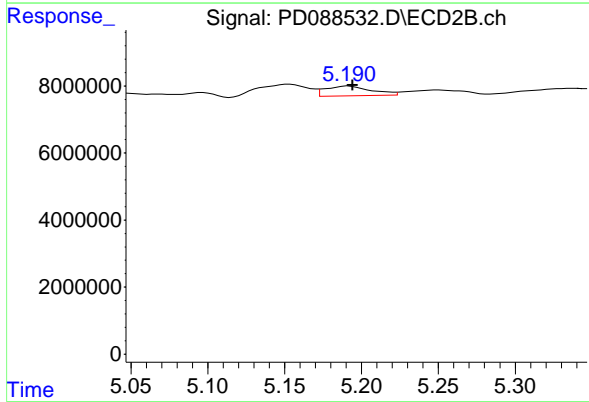
R.T.: 5.153 min
 Delta R.T.: 0.023 min
 Response: 8455782
 Conc: 3.34 ng/ml



#26 Chlordane-4

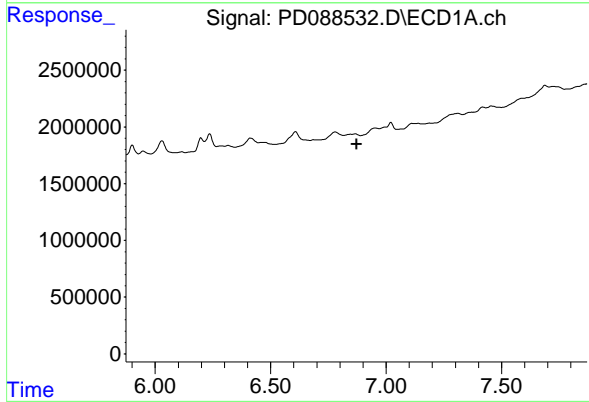
R.T.: 6.030 min
 Delta R.T.: -0.004 min
 Response: 2551940
 Conc: 3.13 ng/ml

Instrument :
 ECD_D
 ClientSampleId :
 MOO-25-0134



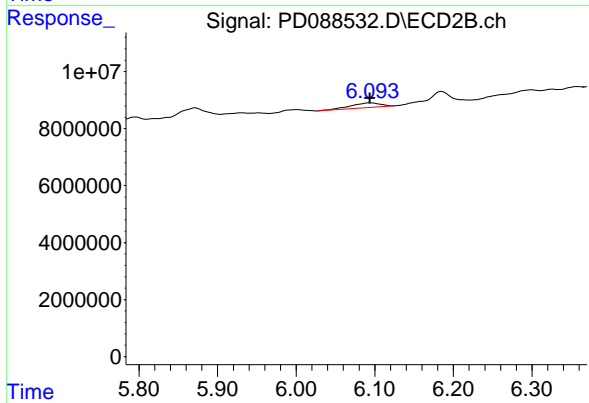
#26 Chlordane-4

R.T.: 5.192 min
 Delta R.T.: -0.002 min
 Response: 6045951
 Conc: 2.83 ng/ml



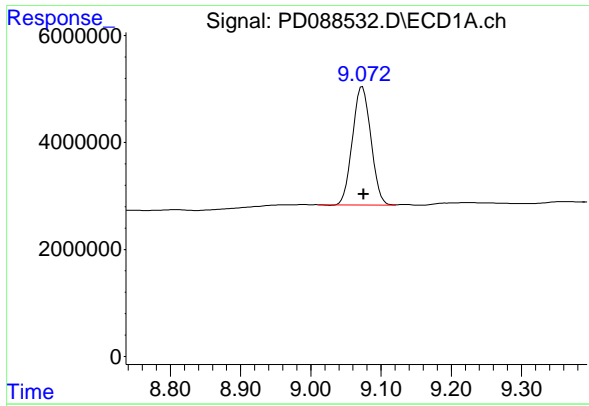
#27 Chlordane-5

R.T.: 0.000 min
 Exp R.T. : 6.873 min
 Response: 0
 Conc: N.D.



#27 Chlordane-5

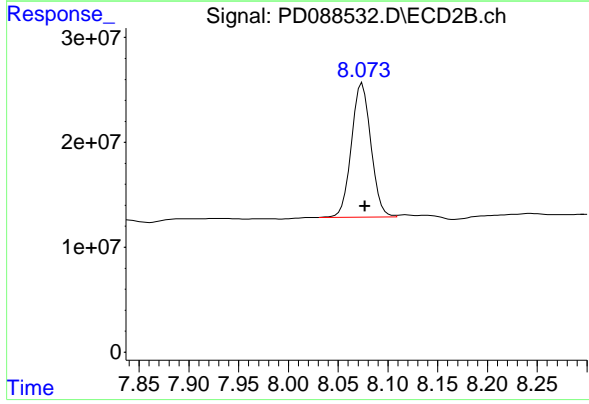
R.T.: 6.095 min
 Delta R.T.: 0.001 min
 Response: 4265456
 Conc: 4.42 ng/ml



#28 Decachlorobiphenyl

R.T.: 9.073 min
Delta R.T.: -0.002 min
Response: 40502994
Conc: 12.24 ng/ml

Instrument :
ECD_D
ClientSampleId :
MOO-25-0134



#28 Decachlorobiphenyl

R.T.: 8.074 min
Delta R.T.: -0.003 min
Response: 173669130
Conc: 9.40 ng/ml