

Data Path : Z:\pestpcbsrv\HPCHEM1\ECD\_D\Data\PD051424\  
 Data File : PD082802.D  
 Signal(s) : Signal #1: ECD1A.ch Signal #2: ECD2B.ch  
 Acq On : 14 May 2024 16:31  
 Operator : AR\AJ  
 Sample : P2454-02  
 Misc :  
 ALS Vial : 25 Sample Multiplier: 1

Instrument :  
 ECD\_D  
 ClientSampleId :  
 SP25-06-20240510-WC

Integration File signal 1: autoint1.e  
 Integration File signal 2: autoint2.e  
 Quant Time: May 14 22:17:44 2024  
 Quant Method : Z:\pestpcbsrv\HPCHEM1\ECD\_D\Method\PD051324.M  
 Quant Title : GC Extractables  
 QLast Update : Mon May 13 15:39:20 2024  
 Response via : Initial Calibration  
 Integrator: ChemStation

Volume Inj. : 1 µl  
 Signal #1 Phase : ZB-MR2 Signal #2 Phase: ZB-MR2  
 Signal #1 Info : 30M x 0.32mm x0.5 Signal #2 Info : 30M x 0.32mm x 0.25µm

Compound	RT#1	RT#2	Resp#1	Resp#2	ng/ml	ng/ml
-----						
System Monitoring Compounds						
1) SA Tetrachlo...	3.565	2.776	29215341	65912052	18.871	16.631
28) SA Decachlor...	9.121	7.905	36034332	66565339	18.045	17.221
Target Compounds						
2) A alpha-BHC	4.040f	3.256f	594591	1871079	0.217	0.300 #
3) MA gamma-BHC...	0.000	3.603	0	1028645	N.D.	0.174 #
4) MA Heptachlor	0.000	3.943	0	2067119	N.D.	0.373 #
5) MB Aldrin	5.288	4.208	1887517	662105	0.732	0.116 #
6) B beta-BHC	4.535f	0.000	627232	0	0.599	N.D. #
7) B delta-BHC	4.796	4.133	5263804	95543	2.118	0.017 #
8) B Heptachlo...	5.717	0.000	1185790	0	0.508	N.D. #
9) A Endosulfan I	6.113	5.091	719879	671256	0.333	0.146 #
11) B alpha-Chl...	6.029f	5.046	1287950	510754	0.569	0.103 #
13) MA Dieldrin	0.000	5.343	0	554693	N.D.	0.110 #
15) B Endosulfa...	6.850f	0.000	1089721	0	0.546	N.D. #
16) A 4,4'-DDD	6.773f	5.763f	195652	396197	0.122	0.105
18) B Endrin al...	6.938f	6.119	114862	346700	0.082	0.111 #
19) B Endosulfa...	0.000	6.321	0	1816167	N.D.	0.455 #
20) A Methoxychlor	0.000	6.612	0	167183	N.D.	0.082 #
21) B Endrin ke...	7.702f	0.000	20982	0	0.011	N.D. #
22) Mirex	8.191f	7.034f	54045	46652	0.035	0.013 #
23) Chlordane-1	0.000	3.741f	0	318958	N.D.	1.741 #
24) Chlordane-2	5.288f	4.319f	1887517	270644	19.072	1.277 #
26) Chlordane-4	0.000	5.046	0	510754	N.D.	0.889 #
27) Chlordane-5	6.905	5.957f	484777	210893	5.892	1.046 #

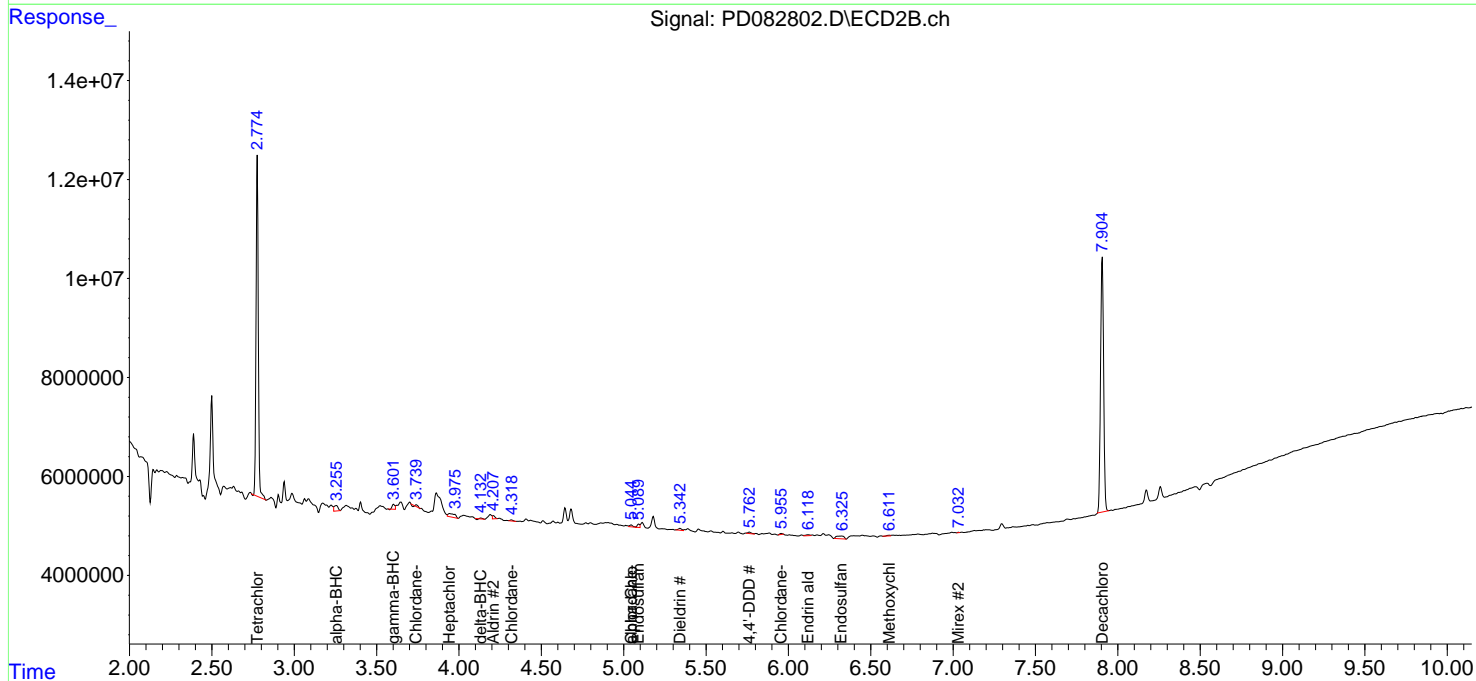
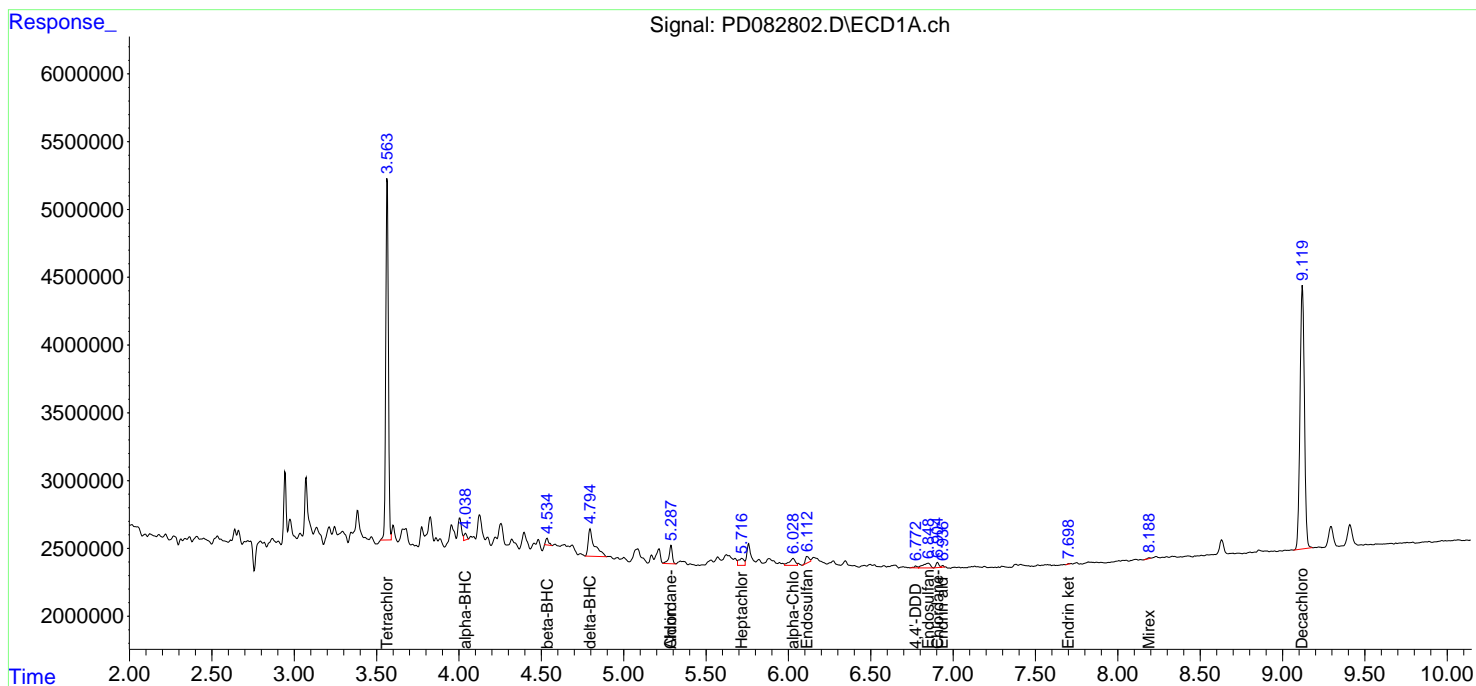
(f)=RT Delta > 1/2 Window (#)=Amounts differ by > 25% (m)=manual int.

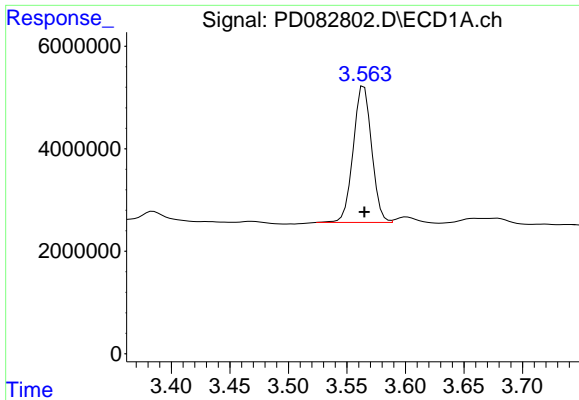
Data Path : Z:\pestpcbsrv\HPCHEM1\ECD\_D\Data\PD051424\  
 Data File : PD082802.D  
 Signal(s) : Signal #1: ECD1A.ch Signal #2: ECD2B.ch  
 Acq On : 14 May 2024 16:31  
 Operator : AR\AJ  
 Sample : P2454-02  
 Misc :  
 ALS Vial : 25 Sample Multiplier: 1

Instrument :  
 ECD\_D  
 ClientSampleId :  
 SP25-06-20240510-WC

Integration File signal 1: autoint1.e  
 Integration File signal 2: autoint2.e  
 Quant Time: May 14 22:17:44 2024  
 Quant Method : Z:\pestpcbsrv\HPCHEM1\ECD\_D\Method\PD051324.M  
 Quant Title : GC Extractables  
 QLast Update : Mon May 13 15:39:20 2024  
 Response via : Initial Calibration  
 Integrator: ChemStation

Volume Inj. : 1 µl  
 Signal #1 Phase : ZB-MR1 Signal #2 Phase: ZB-MR2  
 Signal #1 Info : 30M x 0.32mm x0.5 Signal #2 Info : 30M x 0.32mm x 0.25µm

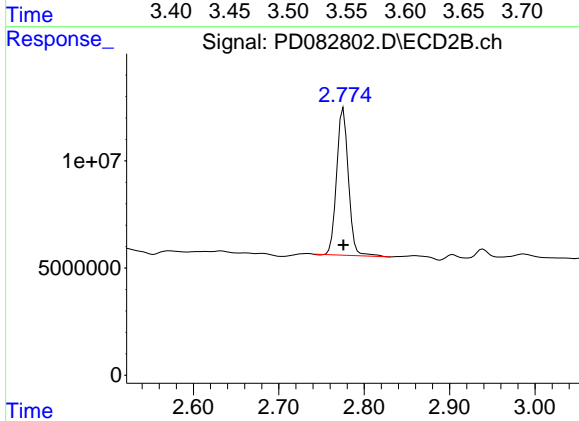




#1 Tetrachloro-m-xylene

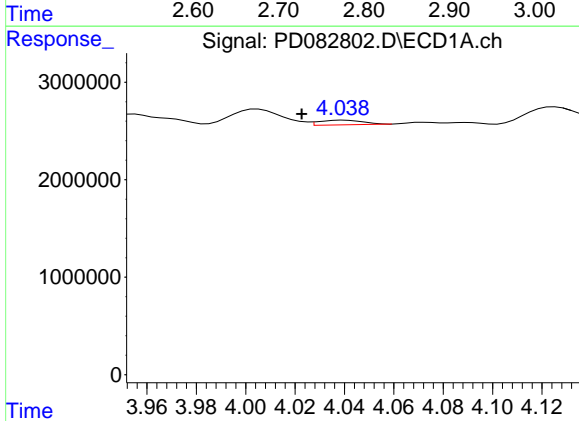
R.T.: 3.565 min  
 Delta R.T.: 0.000 min  
 Response: 29215341  
 Conc: 18.87 ng/ml

Instrument :  
 ECD\_D  
 ClientSampleId :  
 SP25-06-20240510-WC



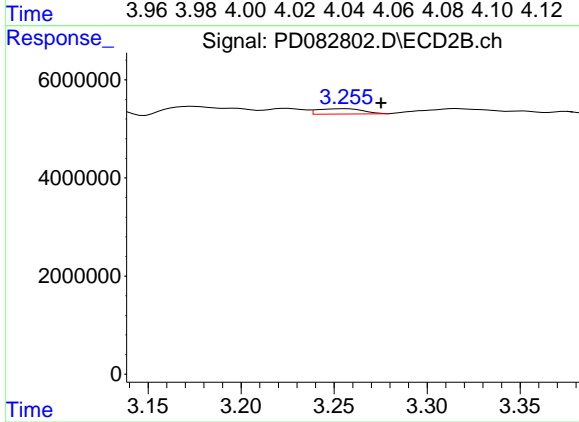
#1 Tetrachloro-m-xylene

R.T.: 2.776 min  
 Delta R.T.: 0.000 min  
 Response: 65912052  
 Conc: 16.63 ng/ml



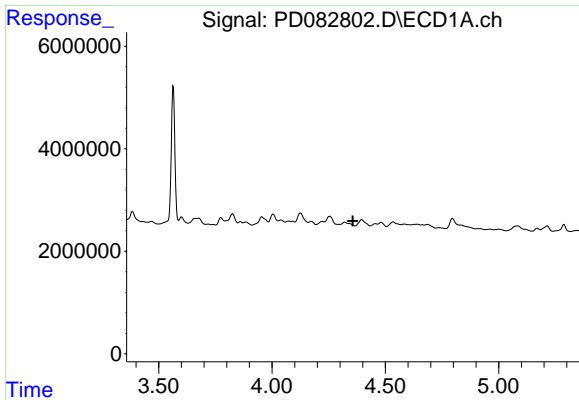
#2 alpha-BHC

R.T.: 4.040 min  
 Delta R.T.: 0.017 min  
 Response: 594591  
 Conc: 0.22 ng/ml



#2 alpha-BHC

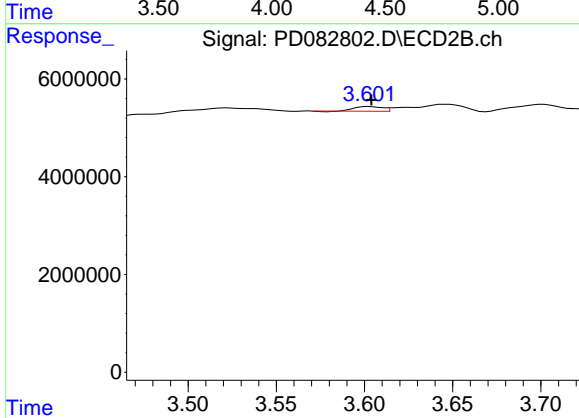
R.T.: 3.256 min  
 Delta R.T.: -0.019 min  
 Response: 1871079  
 Conc: 0.30 ng/ml



#3 gamma-BHC (Lindane)

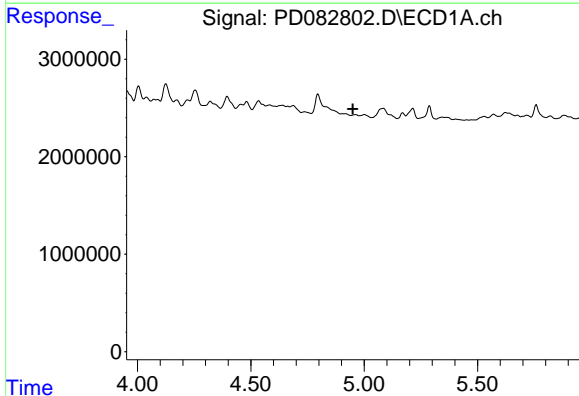
R.T.: 0.000 min  
 Exp R.T.: 4.356 min  
 Response: 0  
 Conc: N.D.

Instrument :  
 ECD\_D  
 ClientSampleId :  
 SP25-06-20240510-WC



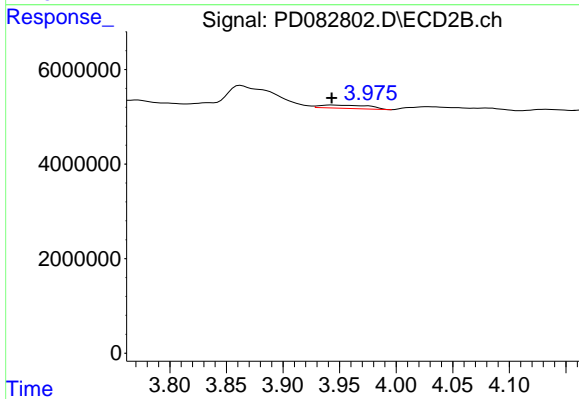
#3 gamma-BHC (Lindane)

R.T.: 3.603 min  
 Delta R.T.: -0.001 min  
 Response: 1028645  
 Conc: 0.17 ng/ml



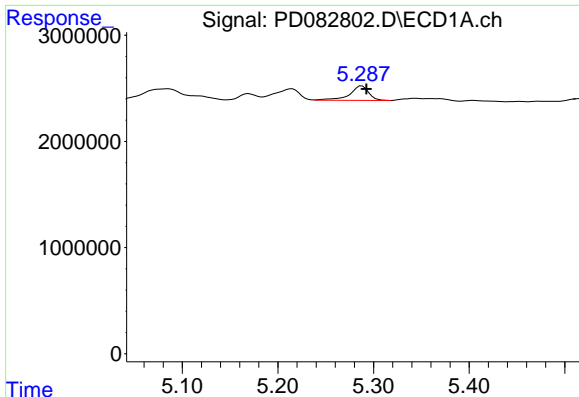
#4 Heptachlor

R.T.: 0.000 min  
 Exp R.T.: 4.949 min  
 Response: 0  
 Conc: N.D.



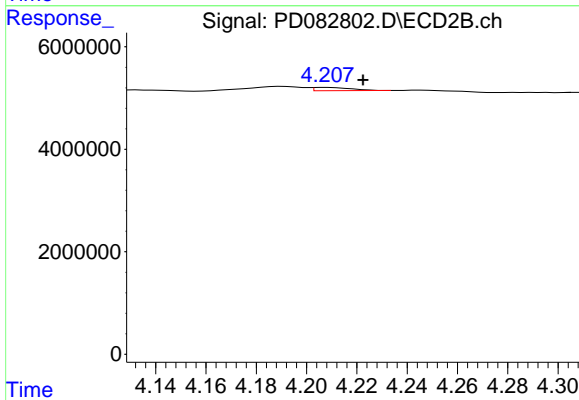
#4 Heptachlor

R.T.: 3.943 min  
 Delta R.T.: 0.000 min  
 Response: 2067119  
 Conc: 0.37 ng/ml

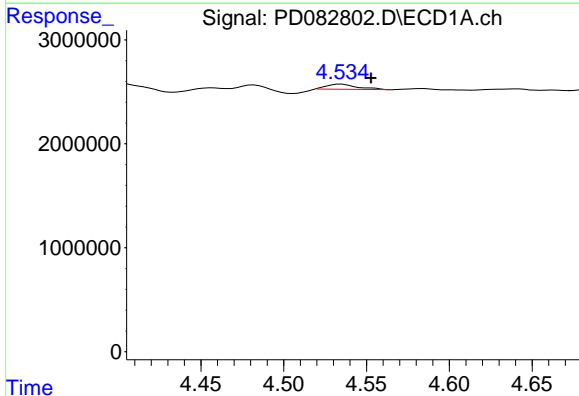


#5 Aldrin  
 R.T.: 5.288 min  
 Delta R.T.: -0.005 min  
 Response: 1887517  
 Conc: 0.73 ng/ml

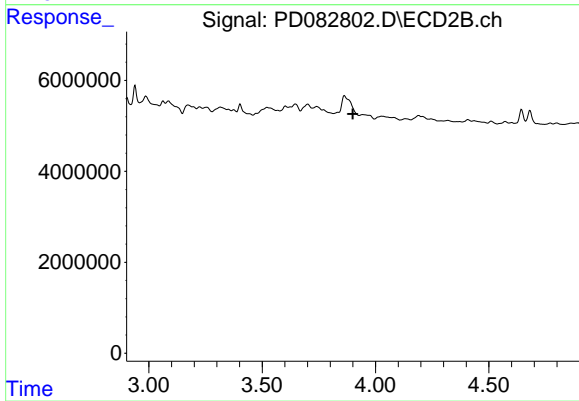
Instrument :  
 ECD\_D  
 ClientSampleId :  
 SP25-06-20240510-WC



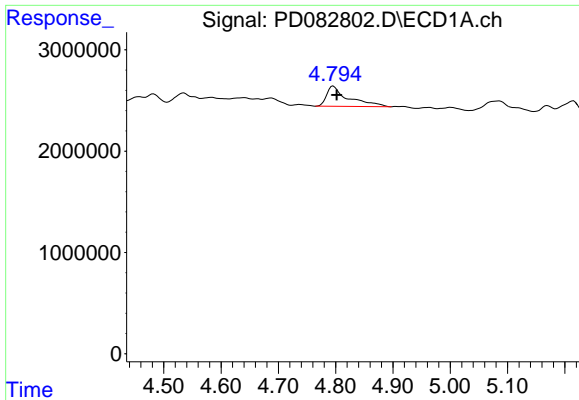
#5 Aldrin  
 R.T.: 4.208 min  
 Delta R.T.: -0.014 min  
 Response: 662105  
 Conc: 0.12 ng/ml



#6 beta-BHC  
 R.T.: 4.535 min  
 Delta R.T.: -0.018 min  
 Response: 627232  
 Conc: 0.60 ng/ml



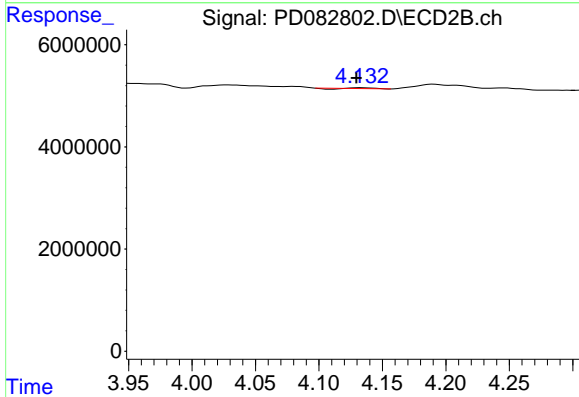
#6 beta-BHC  
 R.T.: 0.000 min  
 Exp R.T. : 3.900 min  
 Response: 0  
 Conc: N.D.



#7 delta-BHC

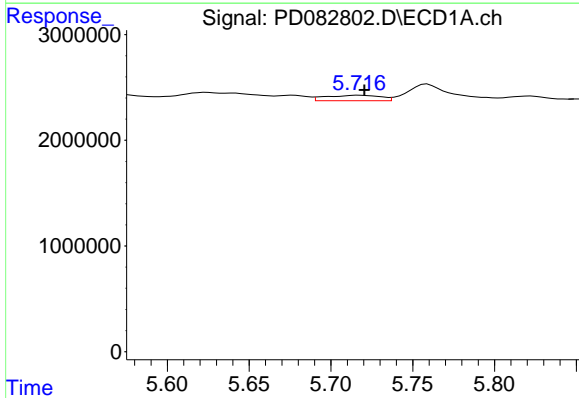
R.T.: 4.796 min  
 Delta R.T.: -0.006 min  
 Response: 5263804  
 Conc: 2.12 ng/ml

Instrument :  
 ECD\_D  
 ClientSampleId :  
 SP25-06-20240510-WC



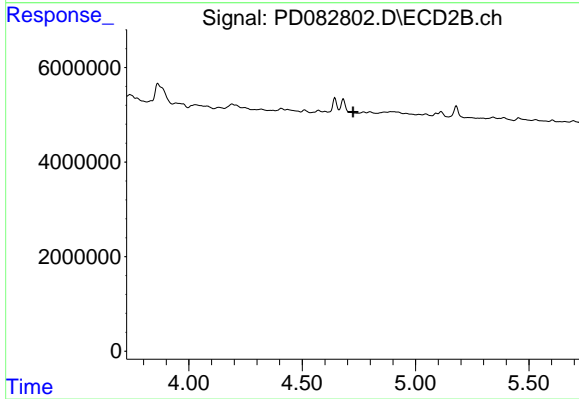
#7 delta-BHC

R.T.: 4.133 min  
 Delta R.T.: 0.003 min  
 Response: 95543  
 Conc: 0.02 ng/ml



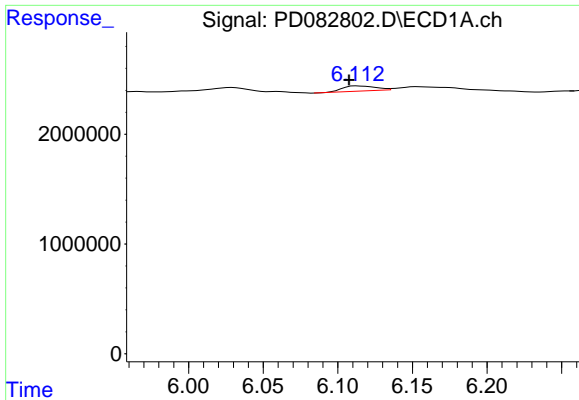
#8 Heptachlor epoxide

R.T.: 5.717 min  
 Delta R.T.: -0.003 min  
 Response: 1185790  
 Conc: 0.51 ng/ml



#8 Heptachlor epoxide

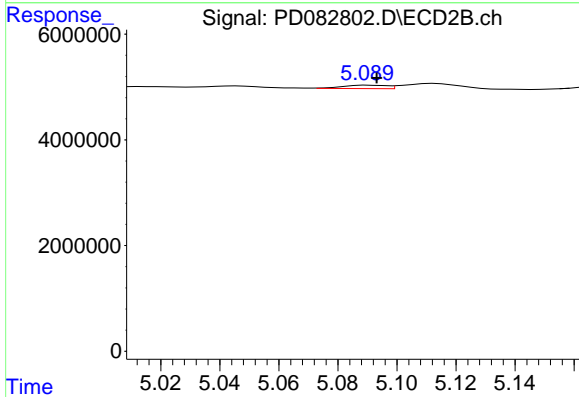
R.T.: 0.000 min  
 Exp R.T. : 4.724 min  
 Response: 0  
 Conc: N.D.



#9 Endosulfan I

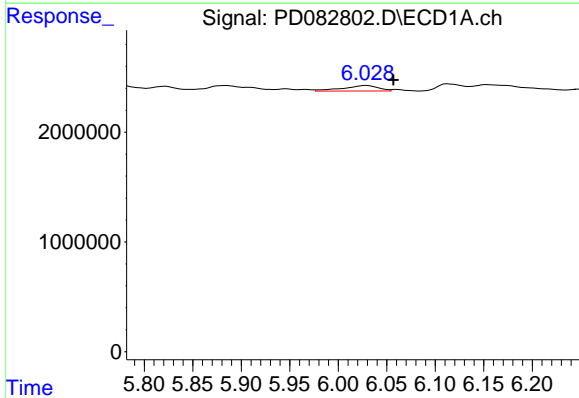
R.T.: 6.113 min  
 Delta R.T.: 0.005 min  
 Response: 719879  
 Conc: 0.33 ng/ml

Instrument :  
 ECD\_D  
 ClientSampleId :  
 SP25-06-20240510-WC



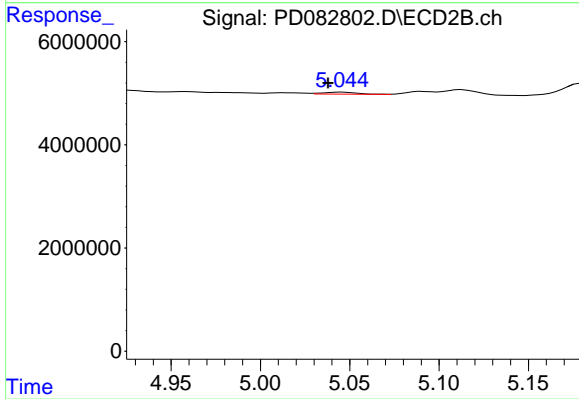
#9 Endosulfan I

R.T.: 5.091 min  
 Delta R.T.: -0.002 min  
 Response: 671256  
 Conc: 0.15 ng/ml



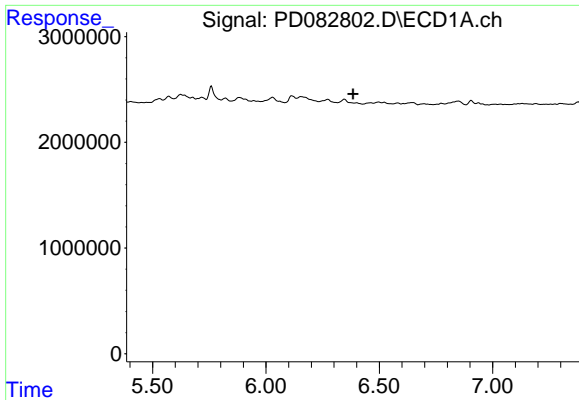
#11 alpha-Chlordane

R.T.: 6.029 min  
 Delta R.T.: -0.028 min  
 Response: 1287950  
 Conc: 0.57 ng/ml



#11 alpha-Chlordane

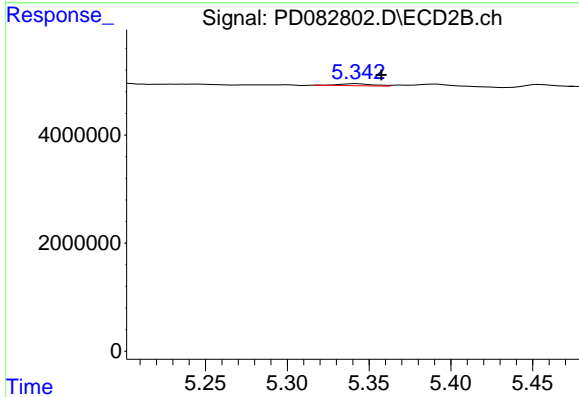
R.T.: 5.046 min  
 Delta R.T.: 0.008 min  
 Response: 510754  
 Conc: 0.10 ng/ml



#13 Dieldrin

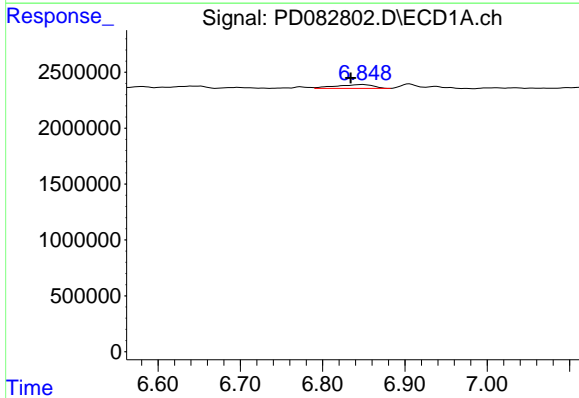
R.T.: 0.000 min  
 Exp R.T.: 6.384 min  
 Response: 0  
 Conc: N.D.

Instrument : ECD\_D  
 ClientSampleId : SP25-06-20240510-WC



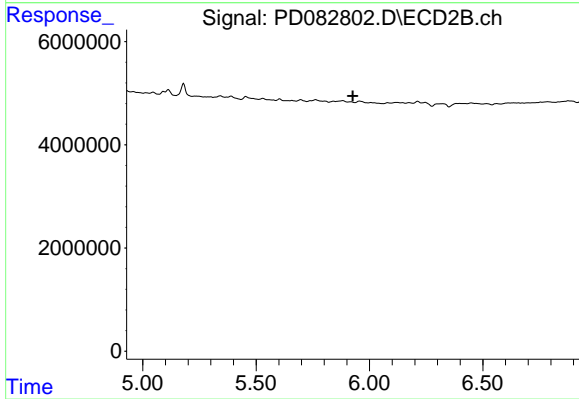
#13 Dieldrin

R.T.: 5.343 min  
 Delta R.T.: -0.015 min  
 Response: 554693  
 Conc: 0.11 ng/ml



#15 Endosulfan II

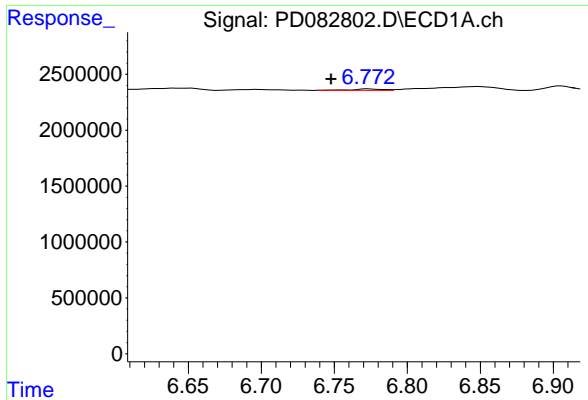
R.T.: 6.850 min  
 Delta R.T.: 0.016 min  
 Response: 1089721  
 Conc: 0.55 ng/ml



#15 Endosulfan II

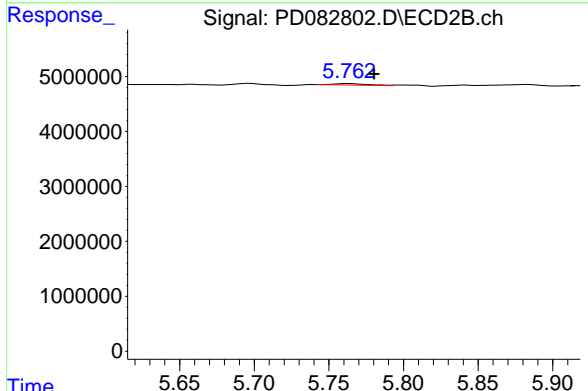
R.T.: 0.000 min  
 Exp R.T.: 5.926 min  
 Response: 0  
 Conc: N.D.



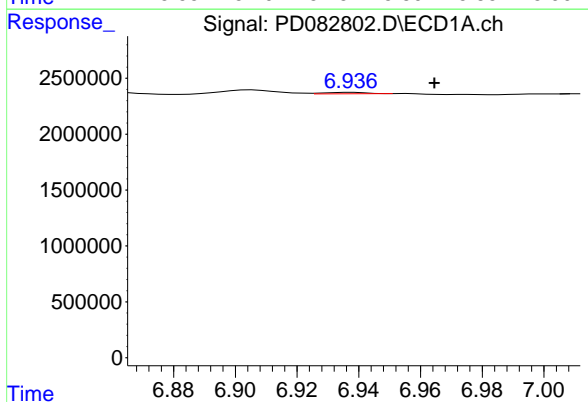


#16 4,4'-DDD  
 R.T.: 6.773 min  
 Delta R.T.: 0.025 min  
 Response: 195652  
 Conc: 0.12 ng/ml

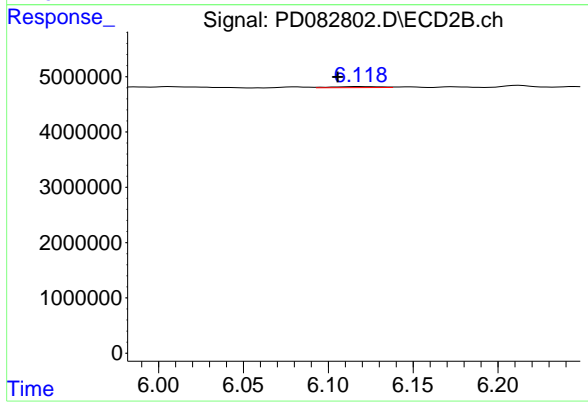
Instrument : ECD\_D  
 ClientSampleId : SP25-06-20240510-WC



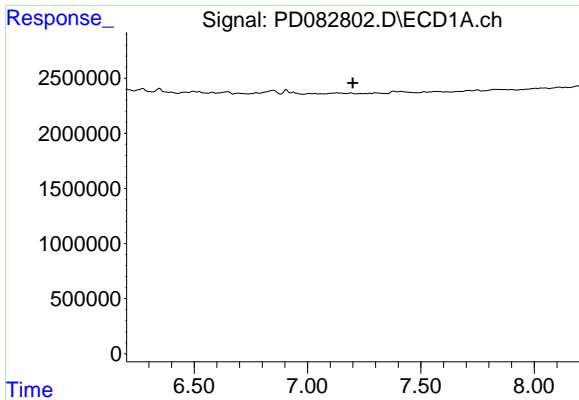
#16 4,4'-DDD  
 R.T.: 5.763 min  
 Delta R.T.: -0.017 min  
 Response: 396197  
 Conc: 0.11 ng/ml



#18 Endrin aldehyde  
 R.T.: 6.938 min  
 Delta R.T.: -0.027 min  
 Response: 114862  
 Conc: 0.08 ng/ml

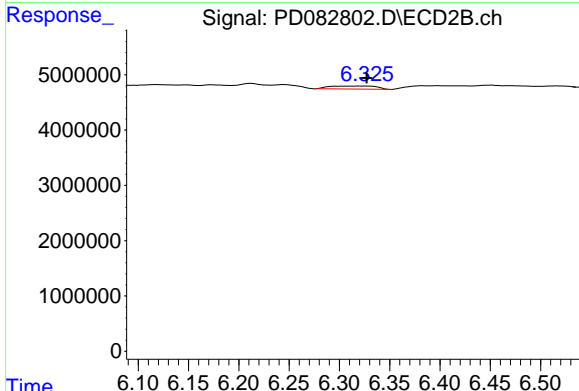


#18 Endrin aldehyde  
 R.T.: 6.119 min  
 Delta R.T.: 0.013 min  
 Response: 346700  
 Conc: 0.11 ng/ml

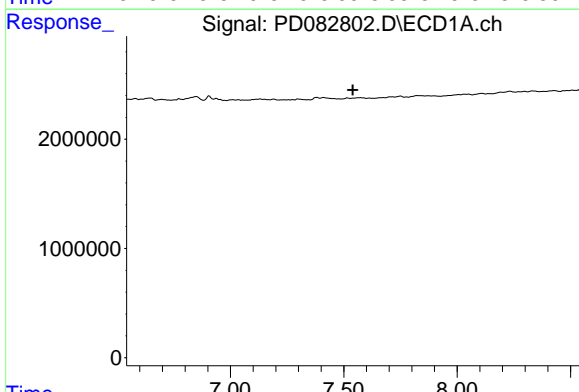


#19 Endosulfan Sulfate  
 R.T.: 0.000 min  
 Exp R.T. : 7.200 min  
 Response: 0  
 Conc: N.D.

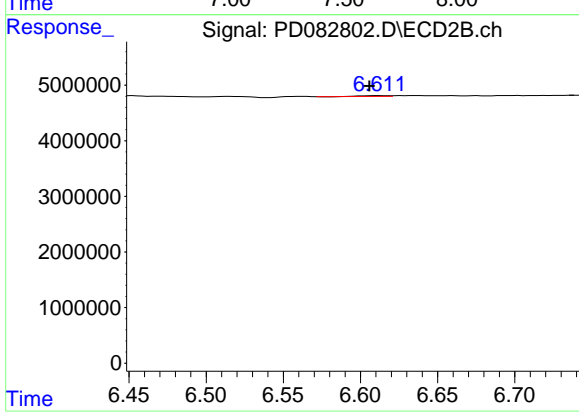
Instrument : ECD\_D  
 ClientSampleId : SP25-06-20240510-WC



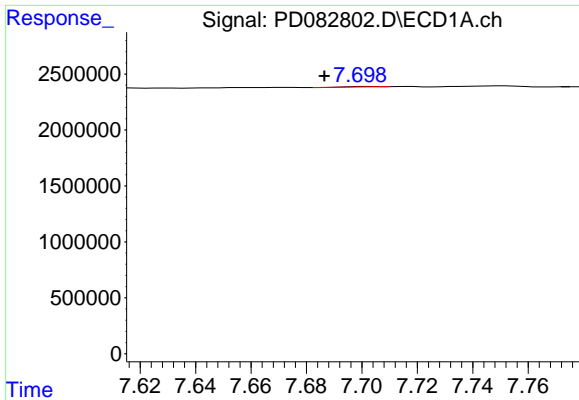
#19 Endosulfan Sulfate  
 R.T.: 6.321 min  
 Delta R.T.: -0.007 min  
 Response: 1816167  
 Conc: 0.46 ng/ml



#20 Methoxychlor  
 R.T.: 0.000 min  
 Exp R.T. : 7.540 min  
 Response: 0  
 Conc: N.D.



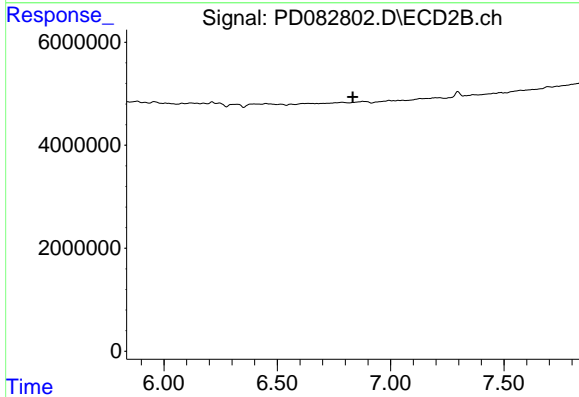
#20 Methoxychlor  
 R.T.: 6.612 min  
 Delta R.T.: 0.006 min  
 Response: 167183  
 Conc: 0.08 ng/ml



#21 Endrin ketone

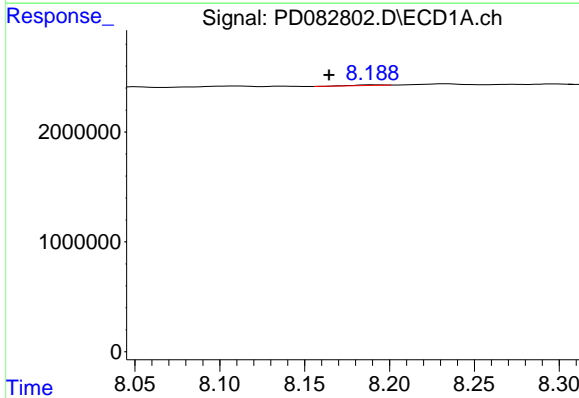
R.T.: 7.702 min  
 Delta R.T.: 0.016 min  
 Response: 20982  
 Conc: 0.01 ng/ml

Instrument :  
 ECD\_D  
 ClientSampleId :  
 SP25-06-20240510-WC



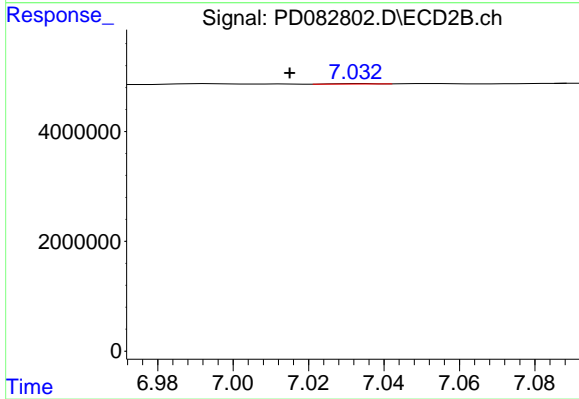
#21 Endrin ketone

R.T.: 0.000 min  
 Exp R.T. : 6.834 min  
 Response: 0  
 Conc: N.D.



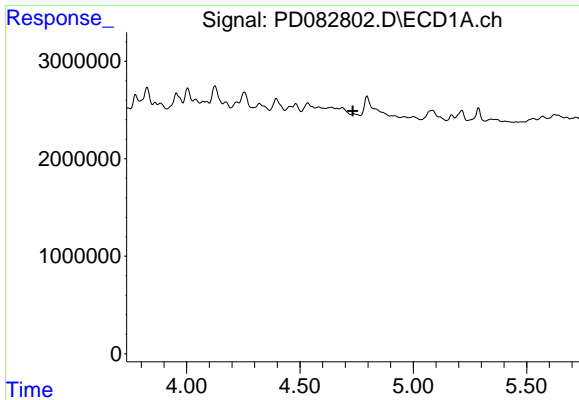
#22 Mirex

R.T.: 8.191 min  
 Delta R.T.: 0.027 min  
 Response: 54045  
 Conc: 0.04 ng/ml



#22 Mirex

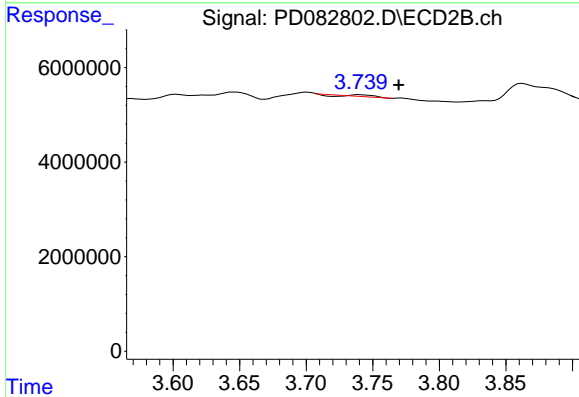
R.T.: 7.034 min  
 Delta R.T.: 0.019 min  
 Response: 46652  
 Conc: 0.01 ng/ml



#23 Chlordane-1

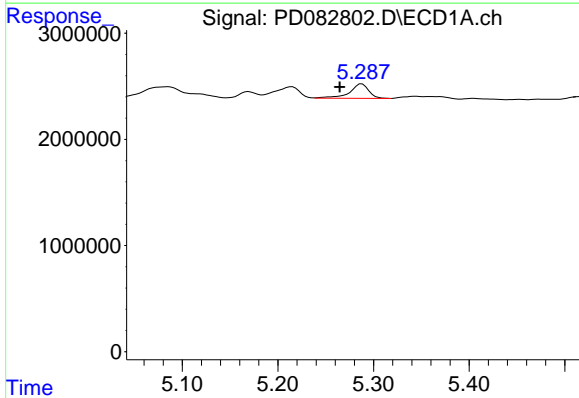
R.T.: 0.000 min  
 Exp R.T.: 4.733 min  
 Response: 0  
 Conc: N.D.

Instrument : ECD\_D  
 ClientSampleId : SP25-06-20240510-WC



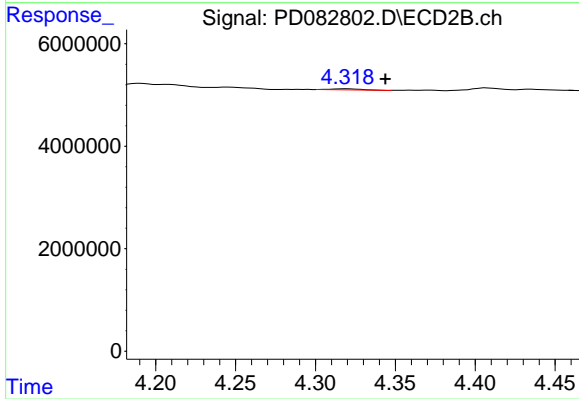
#23 Chlordane-1

R.T.: 3.741 min  
 Delta R.T.: -0.029 min  
 Response: 318958  
 Conc: 1.74 ng/ml



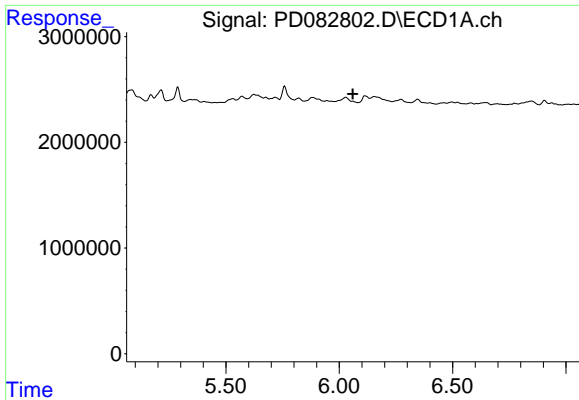
#24 Chlordane-2

R.T.: 5.288 min  
 Delta R.T.: 0.023 min  
 Response: 1887517  
 Conc: 19.07 ng/ml



#24 Chlordane-2

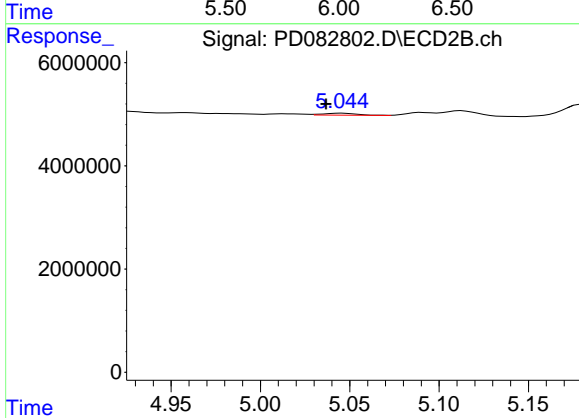
R.T.: 4.319 min  
 Delta R.T.: -0.024 min  
 Response: 270644  
 Conc: 1.28 ng/ml



#26 Chlordane-4

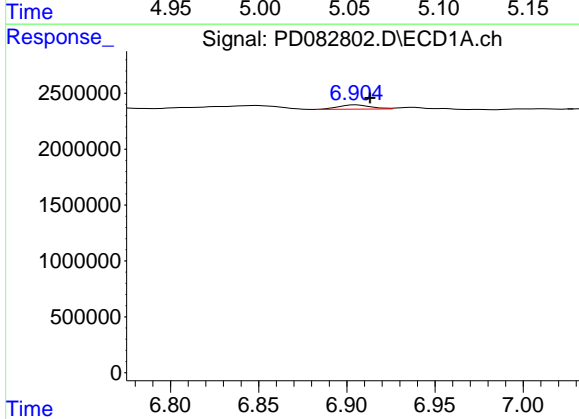
R.T.: 0.000 min  
 Exp R.T.: 6.060 min  
 Response: 0  
 Conc: N.D.

Instrument : ECD\_D  
 ClientSampleId : SP25-06-20240510-WC



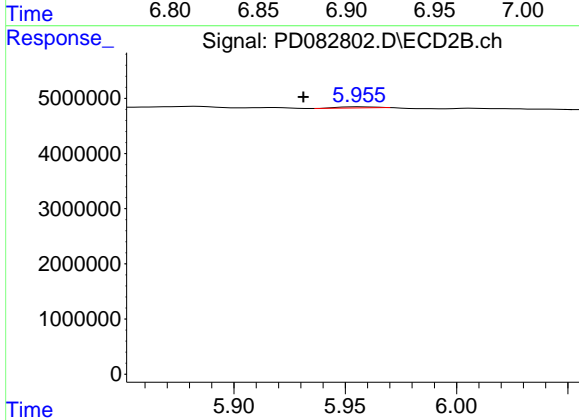
#26 Chlordane-4

R.T.: 5.046 min  
 Delta R.T.: 0.009 min  
 Response: 510754  
 Conc: 0.89 ng/ml



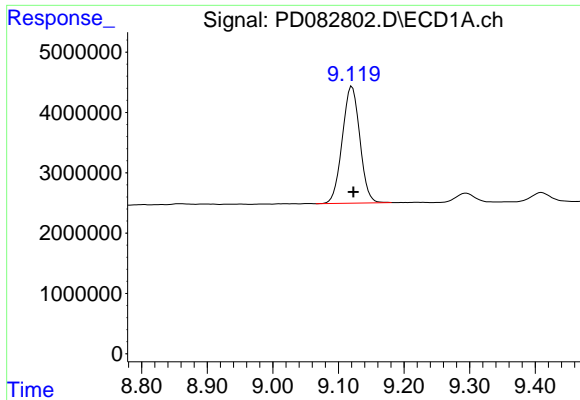
#27 Chlordane-5

R.T.: 6.905 min  
 Delta R.T.: -0.008 min  
 Response: 484777  
 Conc: 5.89 ng/ml



#27 Chlordane-5

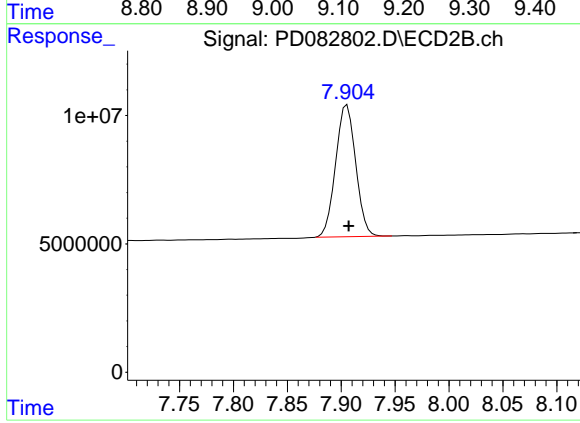
R.T.: 5.957 min  
 Delta R.T.: 0.025 min  
 Response: 210893  
 Conc: 1.05 ng/ml



#28 Decachlorobiphenyl

R.T.: 9.121 min  
Delta R.T.: -0.002 min  
Response: 36034332  
Conc: 18.04 ng/ml

Instrument :  
ECD\_D  
ClientSampleId :  
SP25-06-20240510-WC



#28 Decachlorobiphenyl

R.T.: 7.905 min  
Delta R.T.: -0.001 min  
Response: 66565339  
Conc: 17.22 ng/ml