

Data Path : Z:\pestpcbsrv\HPCHEM1\ECD\_D\Data\PD051521\  
 Data File : PD062956.D  
 Signal(s) : Signal #1: ECD1A.ch Signal #2: ECD2B.ch  
 Acq On : 14 May 2021 18:30  
 Operator : AR\AJ  
 Sample : INDA339  
 Misc :  
 ALS Vial : 99 Sample Multiplier: 1

Instrument :  
 ECD\_D  
 ClientSampled :

Integration File signal 1: autoint1.e  
 Integration File signal 2: autoint2.e  
 Quant Time: May 15 01:19:47 2021  
 Quant Method : Z:\pestpcbsrv\HPCHEM1\ECD\_D\Method\PD042921CLP.M  
 Quant Title : GC Extractables  
 QLast Update : Fri Apr 30 02:49:51 2021  
 Response via : Initial Calibration  
 Integrator: ChemStation

Volume Inj. : 1 µl  
 Signal #1 Phase : ZB-MR2 Signal #2 Phase: ZB-MR1  
 Signal #1 Info : 30M x 0.32mm x0.2 Signal #2 Info : 30M x 0.32mm x 0.50µm

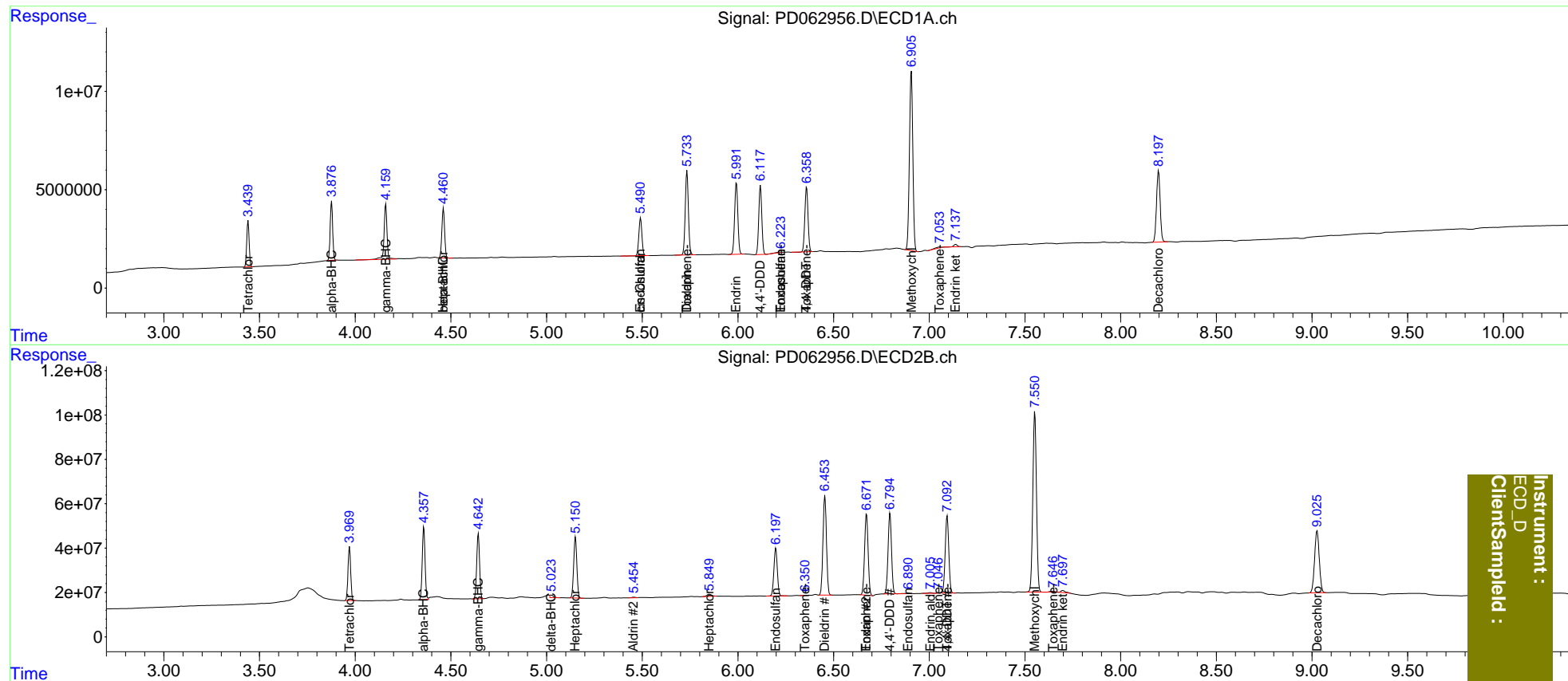
	Compound	RT#1	RT#2	Resp#1	Resp#2	ng/ml	ng/ml
-----							
System Monitoring Compounds							
1)	SA Tetrachlo...	3.441	3.971	20585423	237.5E6	21.501	19.561
27)	SA Decachlor...	8.198	9.027	48047136	475.4E6	44.762	43.551
Target Compounds							
2)	A alpha-BHC	3.877	4.359	27134179	333.8E6	19.380	17.649
3)	MA gamma-BHC...	4.160	4.644	29681265	306.4E6	22.219	17.735
4)	MA Heptachlor	4.461	5.151	25397256	314.6E6	19.779	18.075
5)	MB Aldrin	0.000	5.456	0	4043482	N.D.	0.234
6)	B beta-BHC	4.461f	4.815	25397256	137303	40.907	<MDL #
7)	B delta-BHC	0.000	5.024	0	14970462	N.D.	0.807
8)	B Heptachlo...	0.000	5.851	0	18005780	N.D.	1.123
9)	A Endosulfan I	5.491	6.198	21557305	269.1E6	19.279	18.345
10)	B trans-Chl...	0.000	6.085	0	567870	N.D.	<MDL
11)	B cis-Chlor...	5.491f	6.114f	21557305	1241376	17.556	<MDL #
12)	B 4,4'-DDE	0.000	6.306	0	1115541	N.D.	<MDL
13)	MA Dieldrin	5.734	6.455	48957033	568.8E6	38.839	36.681
14)	MA Endrin	5.992	6.673	42799486	471.9E6	40.450	37.841
15)	B Endosulfa...	6.225f	6.891	702185	5131408	0.677	0.410 #
16)	A 4,4'-DDD	6.118	6.795	38841304	453.9E6	39.006	36.521
17)	MA 4,4'-DDT	6.359	7.094	38121785	450.5E6	40.700	37.938
18)	B Endrin al...	0.000	7.006	0	4883406	N.D.	0.448
19)	B Endosulfa...	0.000	7.222	0	46987	N.D.	<MDL
20)	A Methoxychlor	6.907	7.552	112.9E6	1078.3E6	211.527	190.230
21)	B Endrin ke...	7.138	7.698	1662888	14992876	1.419	1.218
22)	Toxaphene-1	5.734	6.351	48957033	411474	6567.579	6.193 #
23)	Toxaphene-2	0.000	6.673	0	471.9E6	N.D.	5666.874
24)	Toxaphene-3	6.225	7.048	702185	549473	85.454	4.984 #
25)	Toxaphene-4	6.359	7.094	38121785	450.5E6	1979.417	1414.796 #
26)	Toxaphene-5	7.054	7.647	1071338	5978100	49.906	44.314
-----							

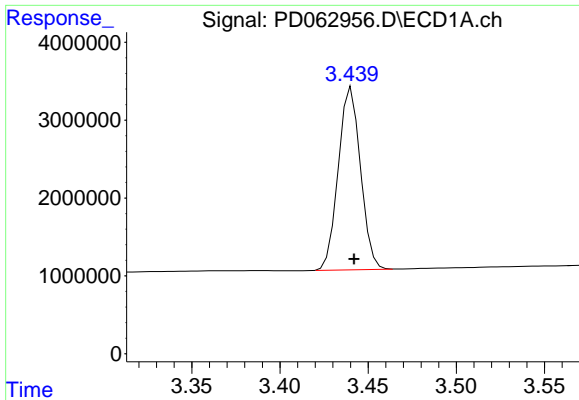
(f)=RT Delta > 1/2 Window (#)=Amounts differ by > 25% (m)=manual int.

Data Path : Z:\pestpcbsrv\HPCHEM1\ECD\_D\Data\PD051521\  
 Data File : PD062956.D  
 Signal(s) : Signal #1: ECD1A.ch Signal #2: ECD2B.ch  
 Acq On : 14 May 2021 18:30  
 Operator : AR\AJ  
 Sample : INDA339  
 Misc :  
 ALS Vial : 99 Sample Multiplier: 1

Integration File signal 1: autoint1.e  
 Integration File signal 2: autoint2.e  
 Quant Time: May 15 01:19:47 2021  
 Quant Method : Z:\pestpcbsrv\HPCHEM1\ECD\_D\Method\PD042921CLP.M  
 Quant Title : GC Extractables  
 QLast Update : Fri Apr 30 02:49:51 2021  
 Response via : Initial Calibration  
 Integrator: ChemStation

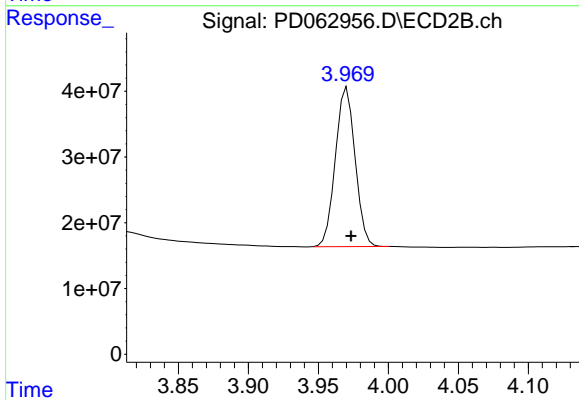
Volume Inj. : 1 µl  
 Signal #1 Phase : ZB-MR2 Signal #2 Phase: ZB-MR1  
 Signal #1 Info : 30M x 0.32mm x0.2 Signal #2 Info : 30M x 0.32mm x 0.50µm



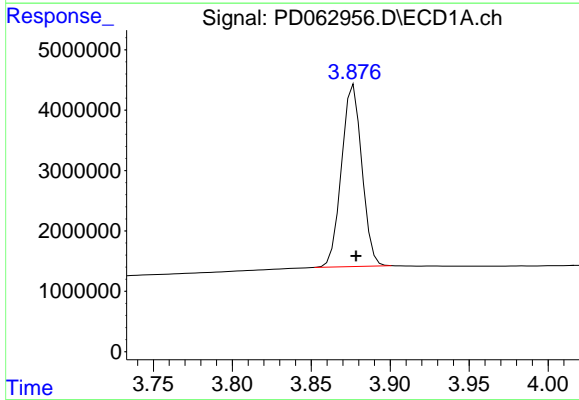


#1 Tetrachloro-m-xylene  
 R.T.: 3.441 min  
 Delta R.T.: -0.001 min  
 Response: 20585423  
 Conc: 21.50 ng/ml

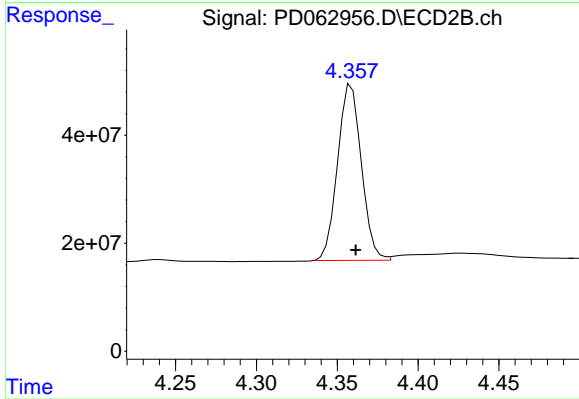
Instrument :  
 ECD\_D  
 ClientSampled :



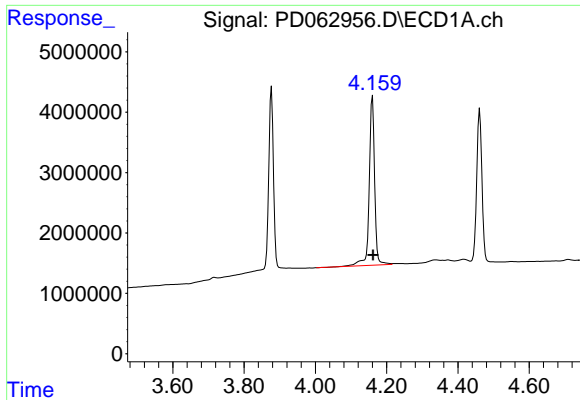
#1 Tetrachloro-m-xylene  
 R.T.: 3.971 min  
 Delta R.T.: -0.003 min  
 Response: 237538876  
 Conc: 19.56 ng/ml



#2 alpha-BHC  
 R.T.: 3.877 min  
 Delta R.T.: -0.001 min  
 Response: 27134179  
 Conc: 19.38 ng/ml

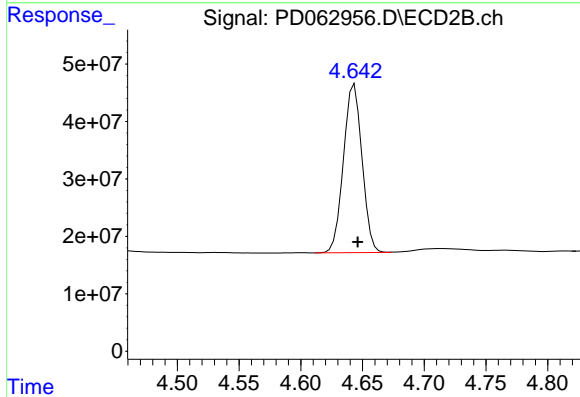


#2 alpha-BHC  
 R.T.: 4.359 min  
 Delta R.T.: -0.003 min  
 Response: 333759051  
 Conc: 17.65 ng/ml

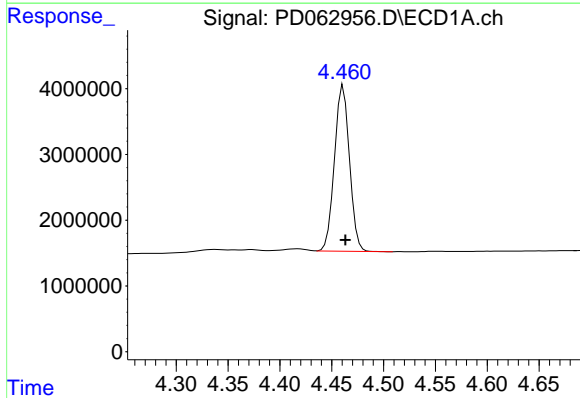


#3 gamma-BHC (Lindane)  
 R.T.: 4.160 min  
 Delta R.T.: -0.001 min  
 Response: 29681265  
 Conc: 22.22 ng/ml

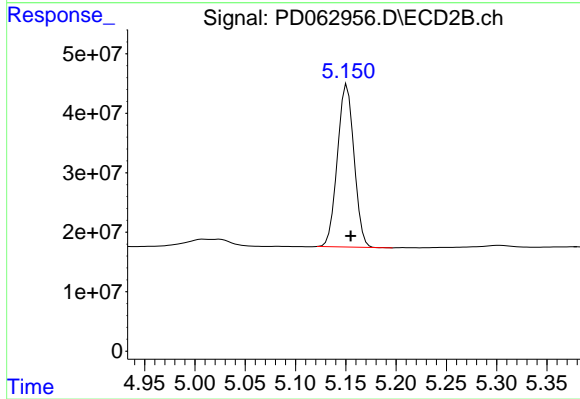
Instrument :  
 ECD\_D  
 ClientSampleId :



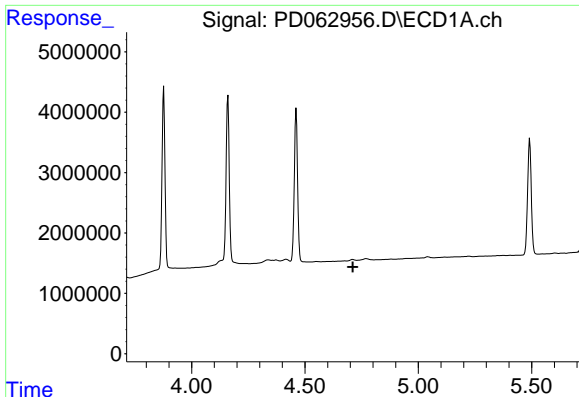
#3 gamma-BHC (Lindane)  
 R.T.: 4.644 min  
 Delta R.T.: -0.003 min  
 Response: 306365452  
 Conc: 17.73 ng/ml



#4 Heptachlor  
 R.T.: 4.461 min  
 Delta R.T.: -0.002 min  
 Response: 25397256  
 Conc: 19.78 ng/ml

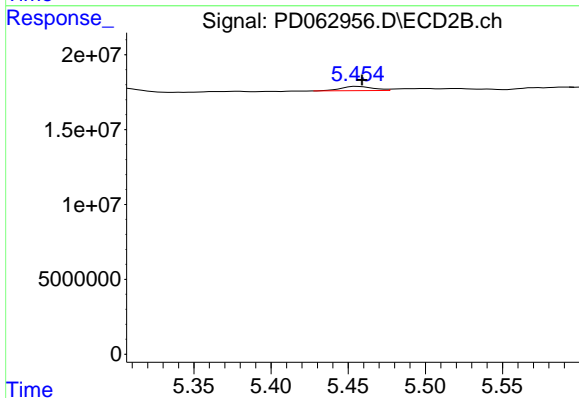


#4 Heptachlor  
 R.T.: 5.151 min  
 Delta R.T.: -0.003 min  
 Response: 314598657  
 Conc: 18.08 ng/ml

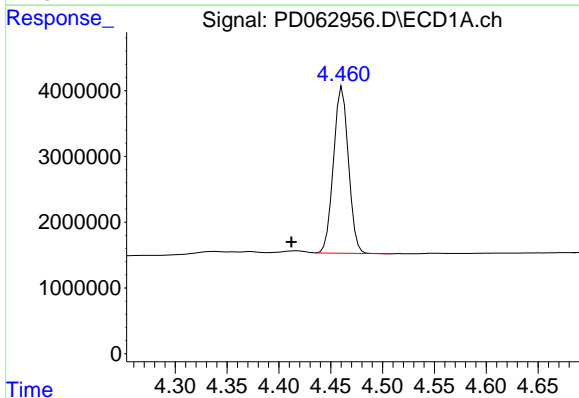


#5 Aldrin  
 R.T.: 0.000 min  
 Exp R.T.: 4.711 min  
 Response: 0  
 Conc: N.D.

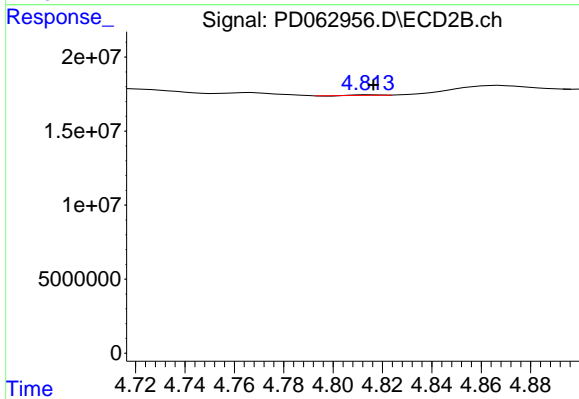
Instrument :  
 ECD\_D  
 ClientSampleId :



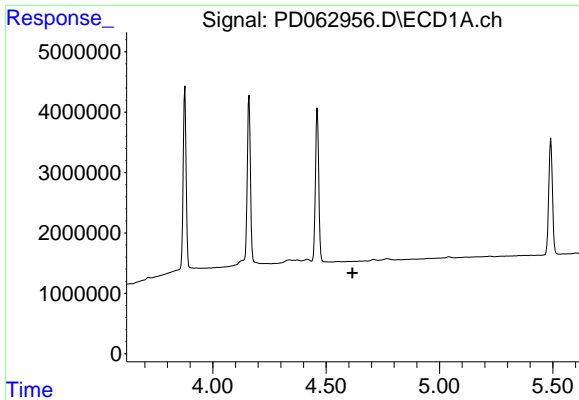
#5 Aldrin  
 R.T.: 5.456 min  
 Delta R.T.: -0.003 min  
 Response: 4043482  
 Conc: 0.23 ng/ml



#6 beta-BHC  
 R.T.: 4.461 min  
 Delta R.T.: 0.049 min  
 Response: 25397256  
 Conc: 40.91 ng/ml

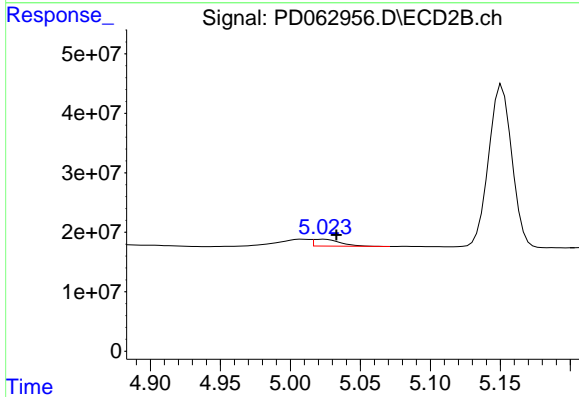


#6 beta-BHC  
 R.T.: 4.815 min  
 Delta R.T.: -0.002 min  
 Response: 137303  
 Conc: N.D.

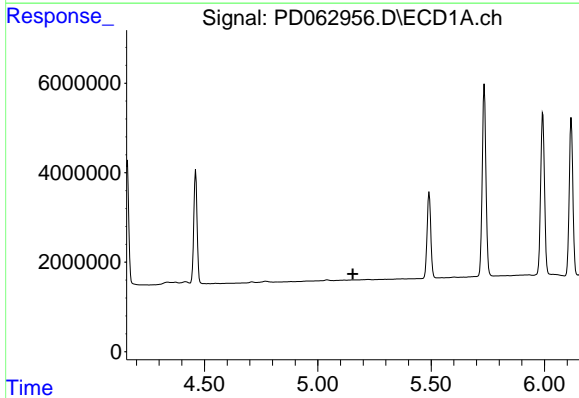


#7 delta-BHC  
 R.T.: 0.000 min  
 Exp R.T. : 4.616 min  
 Response: 0  
 Conc: N.D.

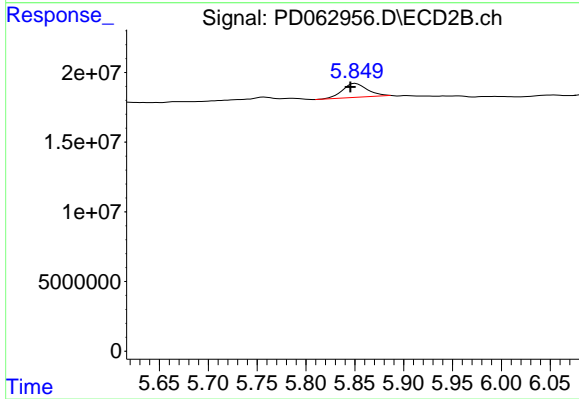
Instrument :  
 ECD\_D  
 ClientSampleId :



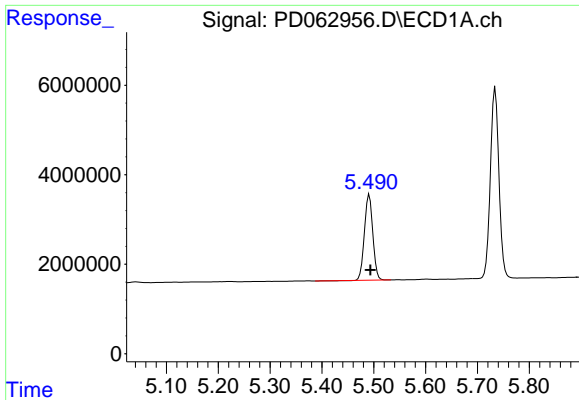
#7 delta-BHC  
 R.T.: 5.024 min  
 Delta R.T.: -0.009 min  
 Response: 14970462  
 Conc: 0.81 ng/ml



#8 Heptachlor epoxide  
 R.T.: 0.000 min  
 Exp R.T. : 5.154 min  
 Response: 0  
 Conc: N.D.



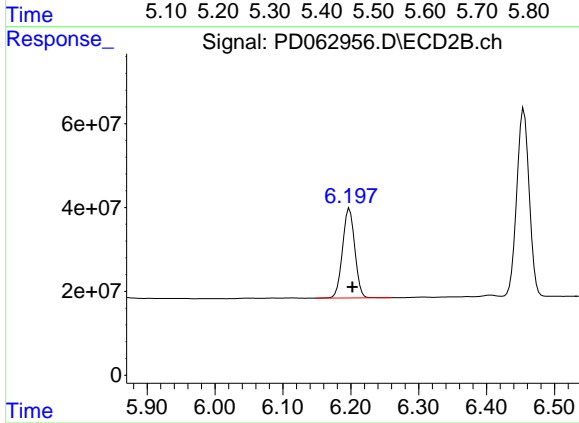
#8 Heptachlor epoxide  
 R.T.: 5.851 min  
 Delta R.T.: 0.005 min  
 Response: 18005780  
 Conc: 1.12 ng/ml



#9 Endosulfan I

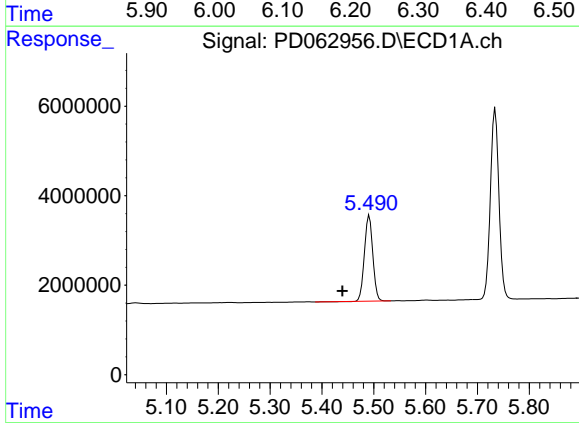
R.T.: 5.491 min  
 Delta R.T.: -0.002 min  
 Response: 21557305  
 Conc: 19.28 ng/ml

Instrument :  
 ECD\_D  
 ClientSampled :



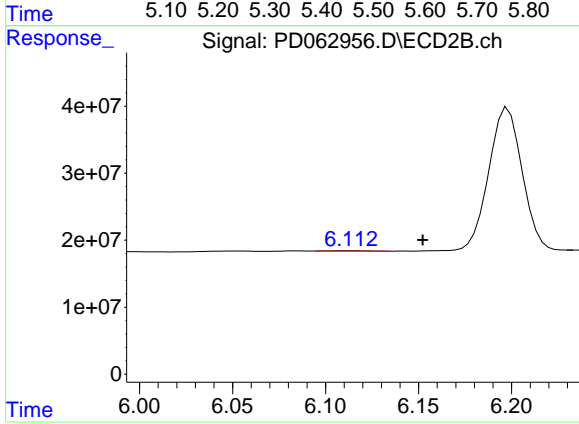
#9 Endosulfan I

R.T.: 6.198 min  
 Delta R.T.: -0.004 min  
 Response: 269059306  
 Conc: 18.34 ng/ml



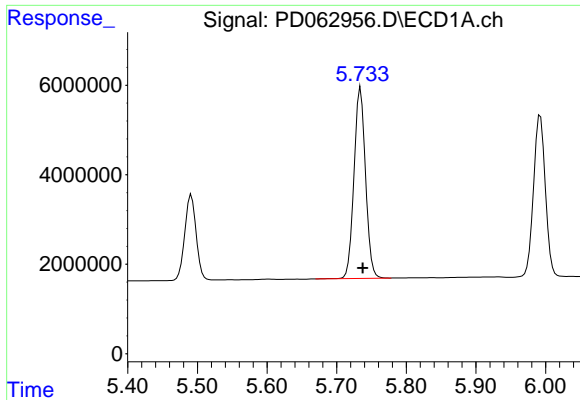
#11 cis-Chlordane

R.T.: 5.491 min  
 Delta R.T.: 0.052 min  
 Response: 21557305  
 Conc: 17.56 ng/ml



#11 cis-Chlordane

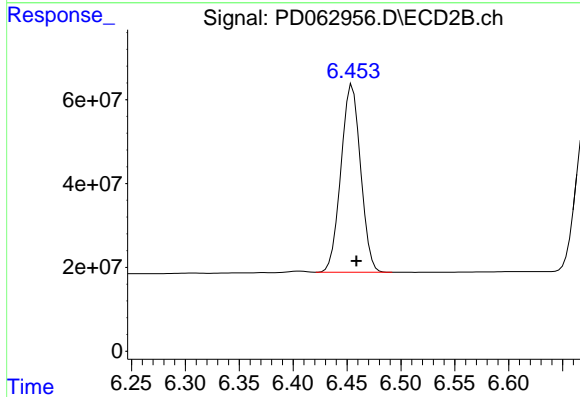
R.T.: 6.114 min  
 Delta R.T.: -0.038 min  
 Response: 1241376  
 Conc: N.D.



#13 Dieldrin

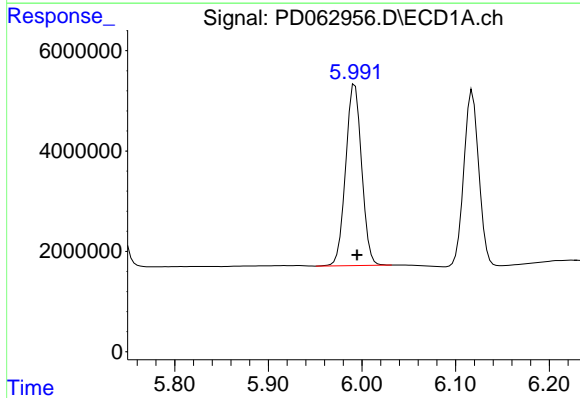
R.T.: 5.734 min  
 Delta R.T.: -0.003 min  
 Response: 48957033  
 Conc: 38.84 ng/ml

Instrument :  
 ECD\_D  
 ClientSampled :



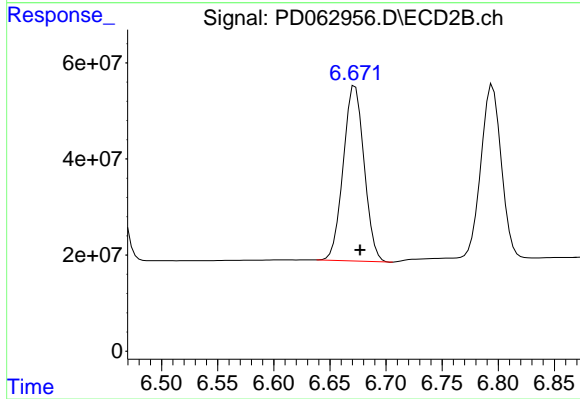
#13 Dieldrin

R.T.: 6.455 min  
 Delta R.T.: -0.004 min  
 Response: 568784324  
 Conc: 36.68 ng/ml



#14 Endrin

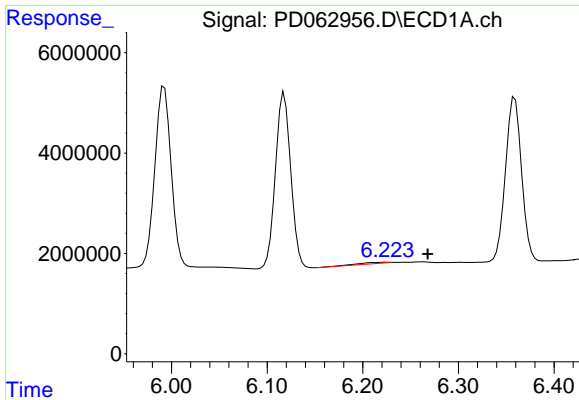
R.T.: 5.992 min  
 Delta R.T.: -0.002 min  
 Response: 42799486  
 Conc: 40.45 ng/ml



#14 Endrin

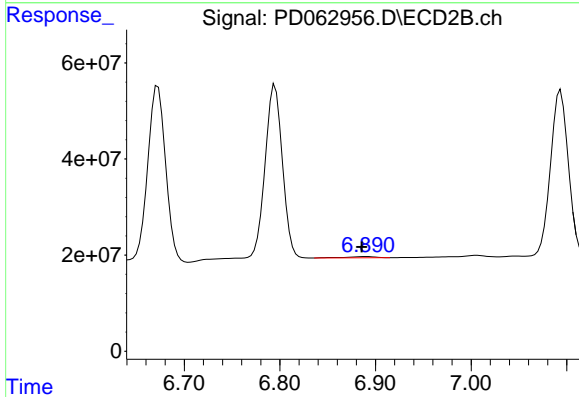
R.T.: 6.673 min  
 Delta R.T.: -0.004 min  
 Response: 471933971  
 Conc: 37.84 ng/ml



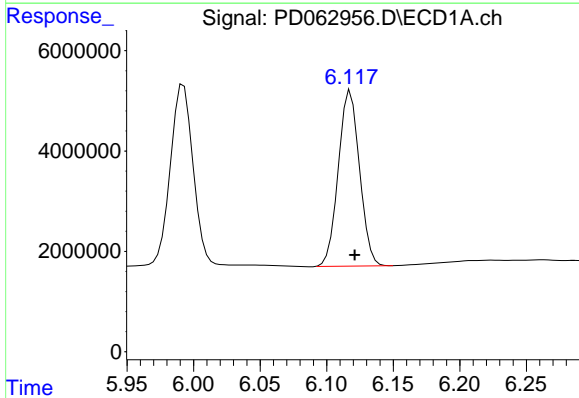


#15 Endosulfan II  
 R.T.: 6.225 min  
 Delta R.T.: -0.043 min  
 Response: 702185  
 Conc: 0.68 ng/ml

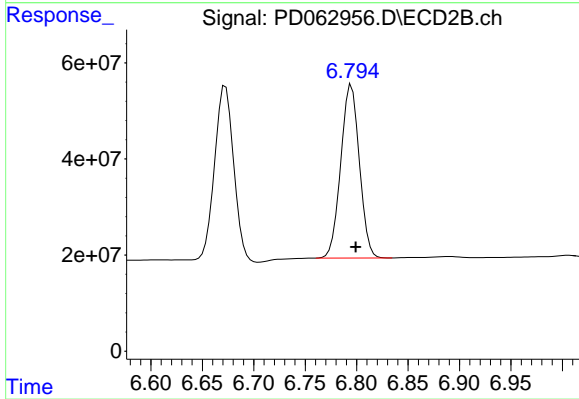
Instrument :  
 ECD\_D  
 ClientSampled :



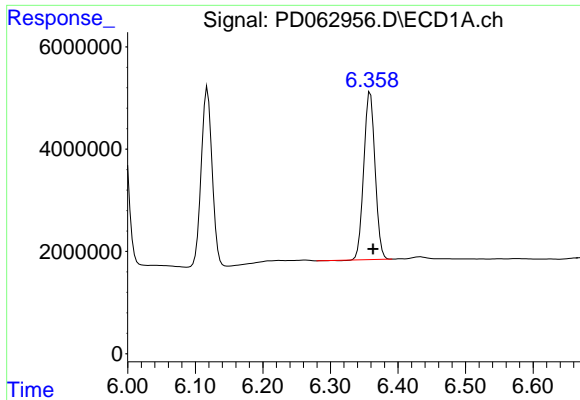
#15 Endosulfan II  
 R.T.: 6.891 min  
 Delta R.T.: 0.005 min  
 Response: 5131408  
 Conc: 0.41 ng/ml



#16 4,4'-DDD  
 R.T.: 6.118 min  
 Delta R.T.: -0.003 min  
 Response: 38841304  
 Conc: 39.01 ng/ml

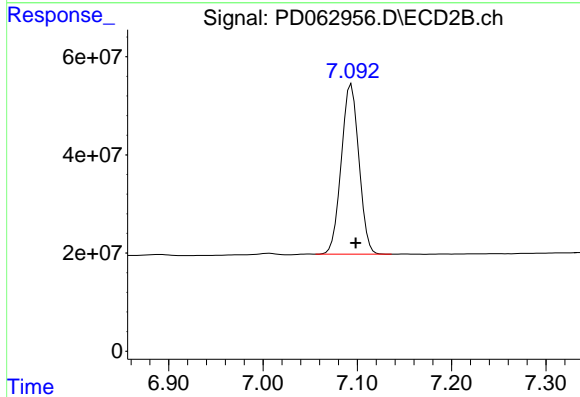


#16 4,4'-DDD  
 R.T.: 6.795 min  
 Delta R.T.: -0.004 min  
 Response: 453915305  
 Conc: 36.52 ng/ml

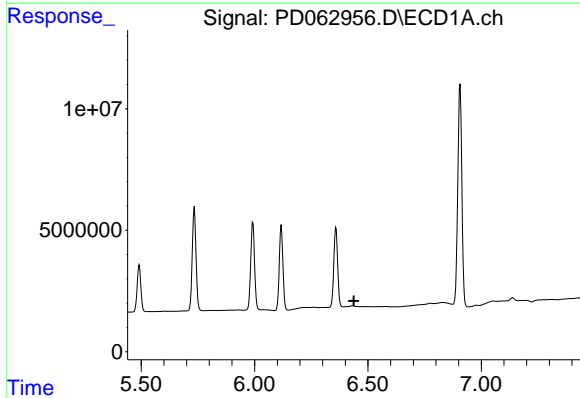


#17 4,4'-DDT  
 R.T.: 6.359 min  
 Delta R.T.: -0.004 min  
 Response: 38121785  
 Conc: 40.70 ng/ml

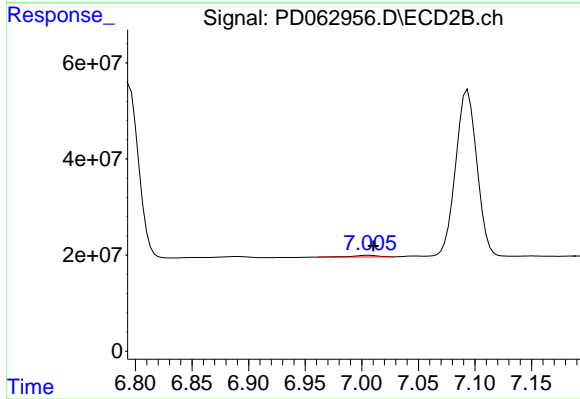
Instrument :  
 ECD\_D  
 ClientSampled :



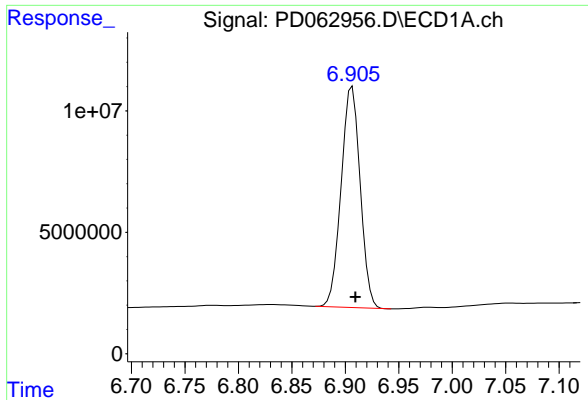
#17 4,4'-DDT  
 R.T.: 7.094 min  
 Delta R.T.: -0.005 min  
 Response: 450454766  
 Conc: 37.94 ng/ml



#18 Endrin aldehyde  
 R.T.: 0.000 min  
 Exp R.T. : 6.437 min  
 Response: 0  
 Conc: N.D.



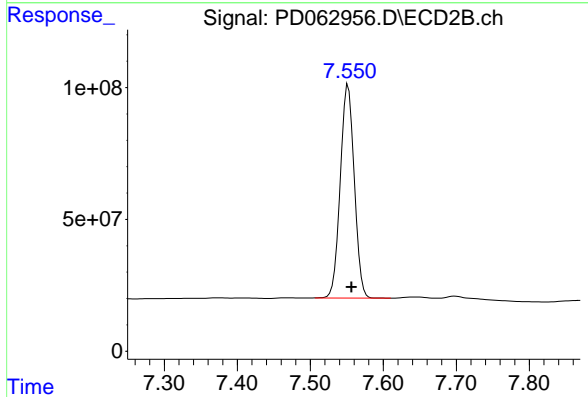
#18 Endrin aldehyde  
 R.T.: 7.006 min  
 Delta R.T.: -0.004 min  
 Response: 4883406  
 Conc: 0.45 ng/ml



#20 Methoxychlor

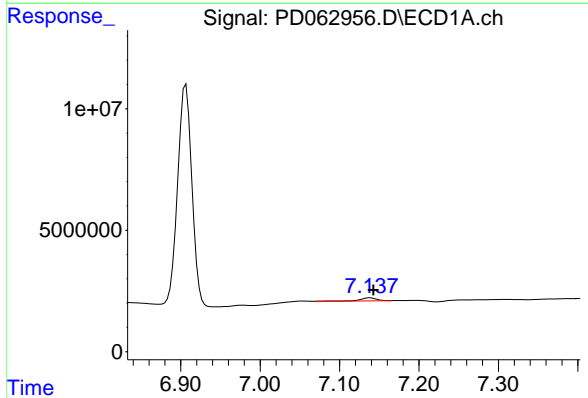
R.T.: 6.907 min  
 Delta R.T.: -0.003 min  
 Response: 112862740  
 Conc: 211.53 ng/ml

Instrument :  
 ECD\_D  
 ClientSampled :



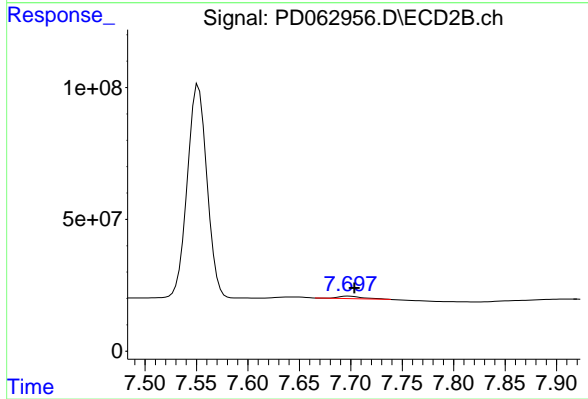
#20 Methoxychlor

R.T.: 7.552 min  
 Delta R.T.: -0.005 min  
 Response: 1078259395  
 Conc: 190.23 ng/ml



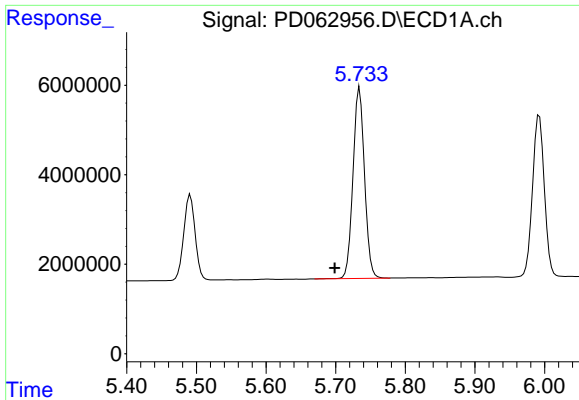
#21 Endrin ketone

R.T.: 7.138 min  
 Delta R.T.: -0.004 min  
 Response: 1662888  
 Conc: 1.42 ng/ml



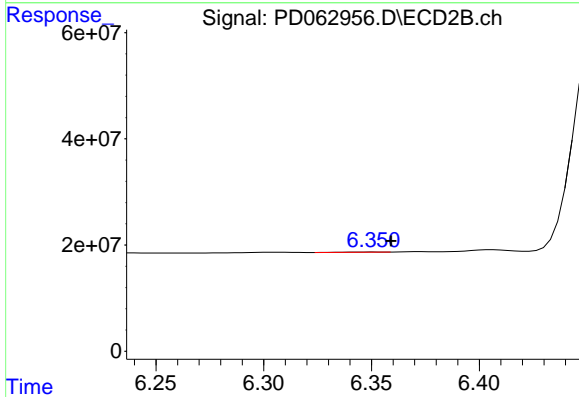
#21 Endrin ketone

R.T.: 7.698 min  
 Delta R.T.: -0.005 min  
 Response: 14992876  
 Conc: 1.22 ng/ml

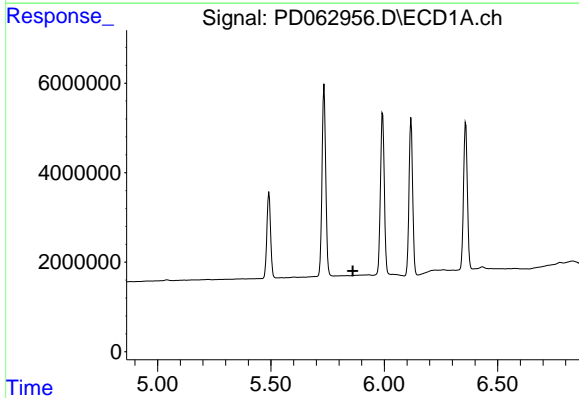


#22 Toxaphene-1  
 R.T.: 5.734 min  
 Delta R.T.: 0.036 min  
 Response: 48957033  
 Conc: 6567.58 ng/ml

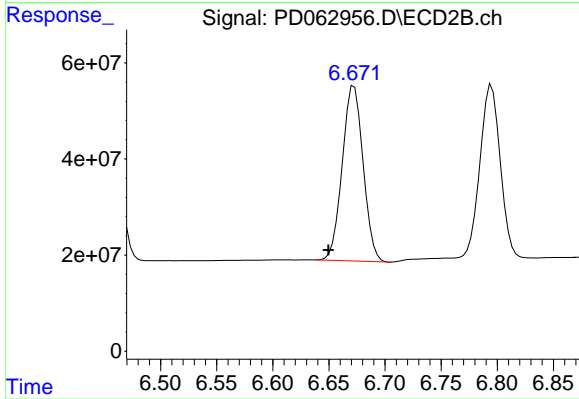
Instrument :  
 ECD\_D  
 ClientSampleId :



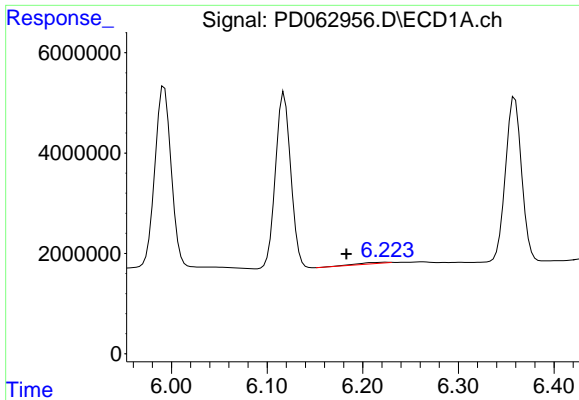
#22 Toxaphene-1  
 R.T.: 6.351 min  
 Delta R.T.: -0.008 min  
 Response: 411474  
 Conc: 6.19 ng/ml



#23 Toxaphene-2  
 R.T.: 0.000 min  
 Exp R.T. : 5.860 min  
 Response: 0  
 Conc: N.D.



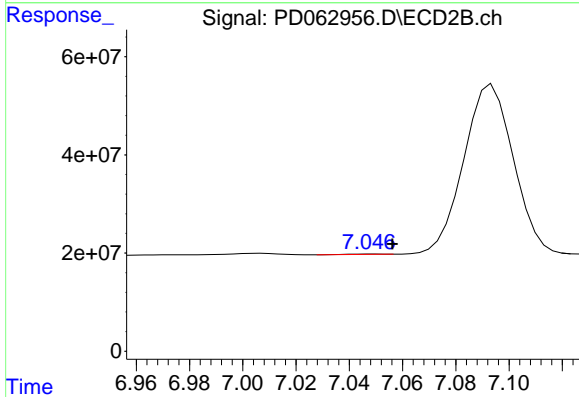
#23 Toxaphene-2  
 R.T.: 6.673 min  
 Delta R.T.: 0.023 min  
 Response: 471933971  
 Conc: 5666.87 ng/ml



#24 Toxaphene-3

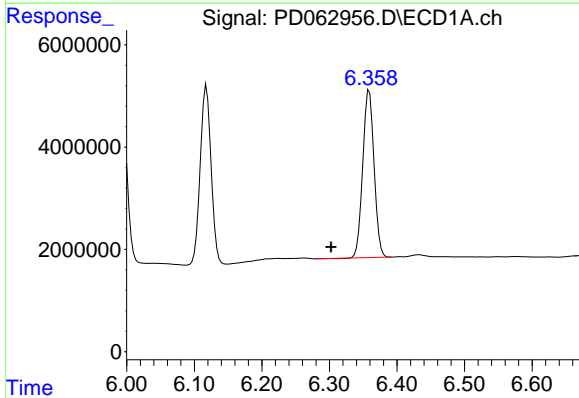
R.T.: 6.225 min  
 Delta R.T.: 0.042 min  
 Response: 702185  
 Conc: 85.45 ng/ml

Instrument :  
 ECD\_D  
 ClientSampled :



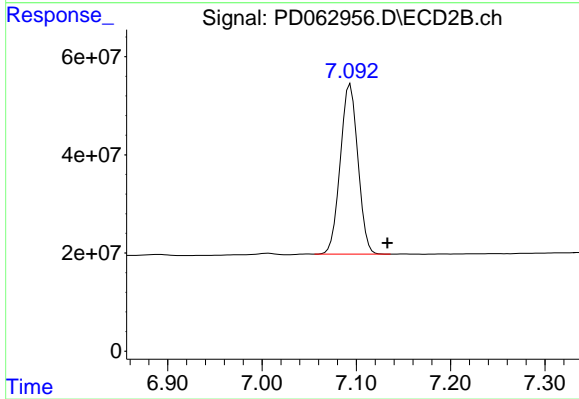
#24 Toxaphene-3

R.T.: 7.048 min  
 Delta R.T.: -0.008 min  
 Response: 549473  
 Conc: 4.98 ng/ml



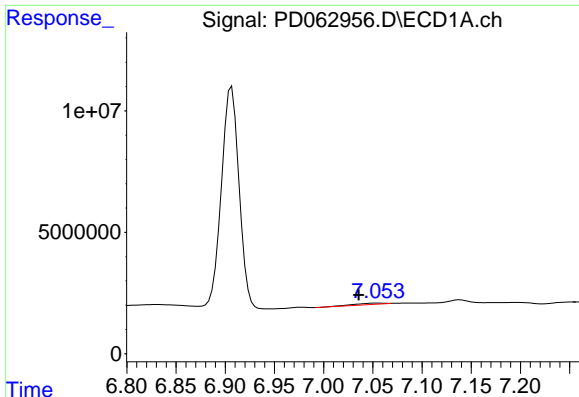
#25 Toxaphene-4

R.T.: 6.359 min  
 Delta R.T.: 0.057 min  
 Response: 38121785  
 Conc: 1979.42 ng/ml



#25 Toxaphene-4

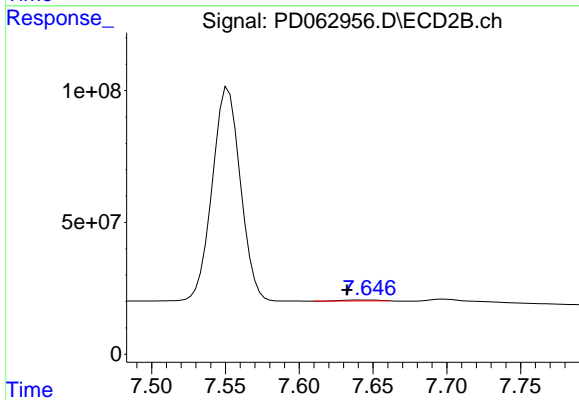
R.T.: 7.094 min  
 Delta R.T.: -0.039 min  
 Response: 450454766  
 Conc: 1414.80 ng/ml



#26 Toxaphene-5

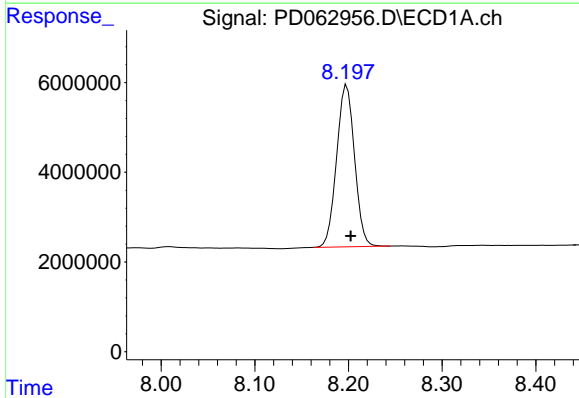
R.T.: 7.054 min  
 Delta R.T.: 0.019 min  
 Response: 1071338  
 Conc: 49.91 ng/ml

Instrument :  
 ECD\_D  
 ClientSampleId :



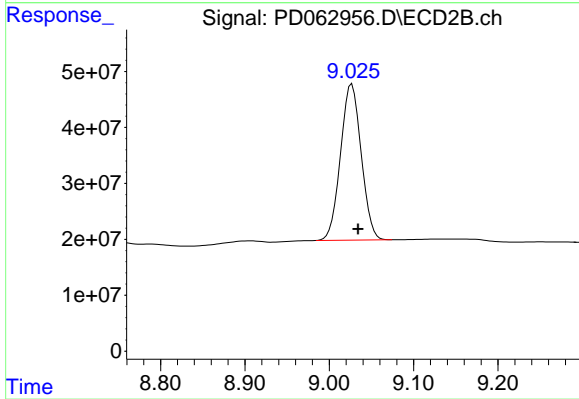
#26 Toxaphene-5

R.T.: 7.647 min  
 Delta R.T.: 0.015 min  
 Response: 5978100  
 Conc: 44.31 ng/ml



#27 Decachlorobiphenyl

R.T.: 8.198 min  
 Delta R.T.: -0.004 min  
 Response: 48047136  
 Conc: 44.76 ng/ml



#27 Decachlorobiphenyl

R.T.: 9.027 min  
 Delta R.T.: -0.007 min  
 Response: 475361834  
 Conc: 43.55 ng/ml