

Data Path : Z:\pestpcbsrv\HPCHEM1\ECD_D\Data\PD051523\
 Data File : PD075458.D
 Signal(s) : Signal #1: ECD1A.ch Signal #2: ECD2B.ch
 Acq On : 15 May 2023 09:58
 Operator : AR\AJ
 Sample : 02592-08
 Misc :
 ALS Vial : 9 Sample Multiplier: 1

Instrument :
 ECD_D
 ClientSampleId :
 JREF4

Integration File signal 1: autoint1.e
 Integration File signal 2: autoint2.e
 Quant Time: May 15 21:49:18 2023
 Quant Method : Z:\pestpcbsrv\HPCHEM1\ECD_D\Method\PD050323CLP.M
 Quant Title : GC Extractables
 QLast Update : Thu May 04 02:14:07 2023
 Response via : Initial Calibration
 Integrator: ChemStation

Volume Inj. : 1 µl
 Signal #1 Phase : ZB-MR1 Signal #2 Phase: ZB-MR2
 Signal #1 Info : 30M x 0.32mm x0.5 Signal #2 Info : 30M x 0.32mm x 0.25µm

Compound	RT#1	RT#2	Resp#1	Resp#2	ng/ml	ng/ml

System Monitoring Compounds						
1) SA Tetrachlo...	3.548	2.770	17480559	9156748	7.664	8.682
27) SA Decachlor...	9.091	7.916	26891197	12003917	10.866	12.711

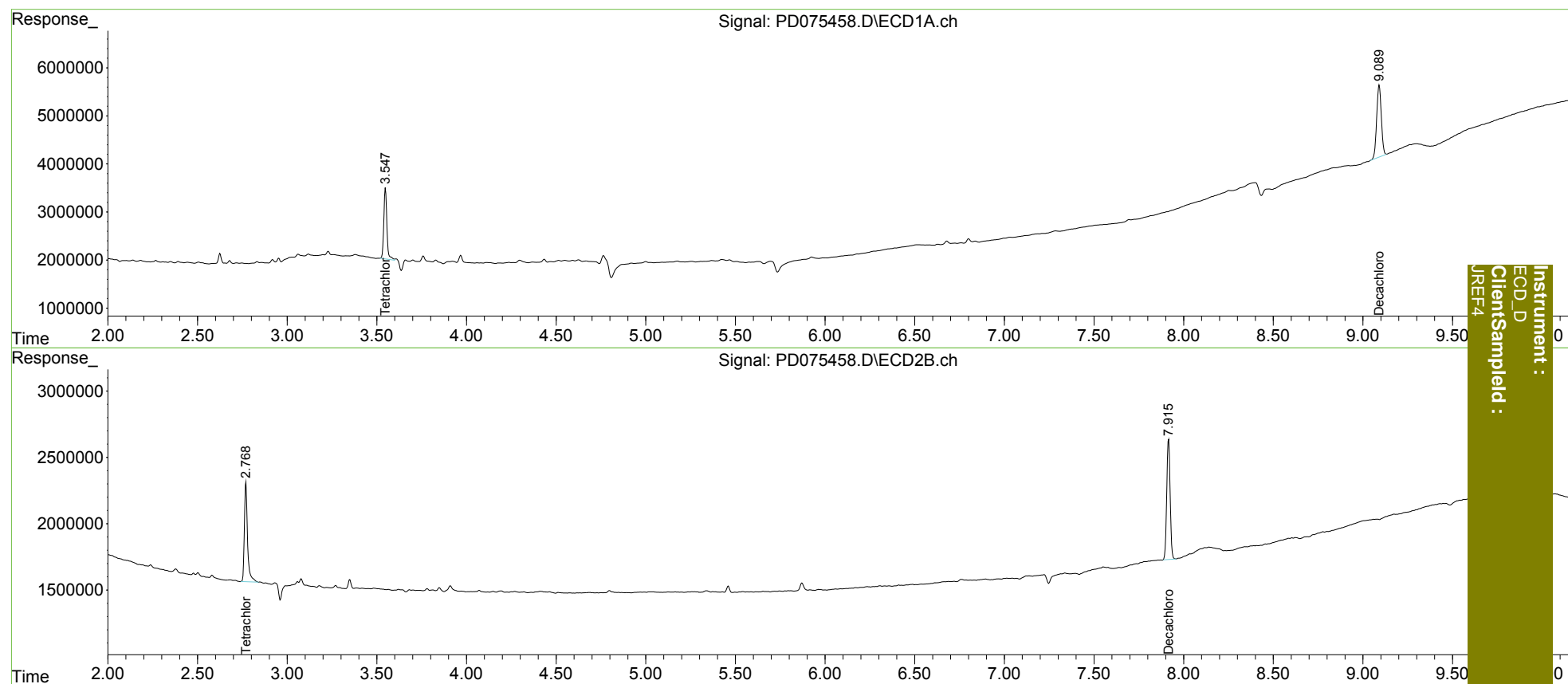
Target Compounds

 (f)=RT Delta > 1/2 Window (#)=Amounts differ by > 25% (m)=manual int.

Data Path : Z:\pestpcbsrv\HPCHEM1\ECD_D\Data\PD051523\
 Data File : PD075458.D
 Signal(s) : Signal #1: ECD1A.ch Signal #2: ECD2B.ch
 Acq On : 15 May 2023 09:58
 Operator : AR\AJ
 Sample : 02592-08
 Misc :
 ALS Vial : 9 Sample Multiplier: 1

Integration File signal 1: autoint1.e
 Integration File signal 2: autoint2.e
 Quant Time: May 15 21:49:18 2023
 Quant Method : Z:\pestpcbsrv\HPCHEM1\ECD_D\Method\PD050323CLP.M
 Quant Title : GC Extractables
 QLast Update : Thu May 04 02:14:07 2023
 Response via : Initial Calibration
 Integrator: ChemStation

Volume Inj. : 1 µl
 Signal #1 Phase : ZB-MR1 Signal #2 Phase: ZB-MR2
 Signal #1 Info : 30M x 0.32mm x0.5 Signal #2 Info : 30M x 0.32mm x 0.25µm



Instrument :
 ECD_D
 ClientSampled :
 JREF4