

Data Path : Z:\pestpcbsrv\HPCHEM1\ECD_D\Data\PD051622\
 Data File : PD069652.D
 Signal(s) : Signal #1: ECD1A.ch Signal #2: ECD2B.ch
 Acq On : 16 May 2022 17:00
 Operator : AR\AJ
 Sample : PSTDCCC050
 Misc :
 ALS Vial : 4 Sample Multiplier: 1

Instrument :

ECD_D

ClientSampleId :

PSTDCCC050

Manual Integrations

APPROVED

Reviewed By :Abdul Mirza 05/17/2022

Supervised By :mohammad ahmed 05/17/2022

Integration File signal 1: autoint1.e
 Integration File signal 2: autoint2.e
 Quant Time: May 17 00:53:20 2022
 Quant Method : Z:\pestpcbsrv\HPCHEM1\ECD_D\Method\PD041622.M
 Quant Title : GC Extractables
 QLast Update : Mon Apr 18 13:40:55 2022
 Response via : Initial Calibration
 Integrator: ChemStation

Volume Inj. : 2 µl
 Signal #1 Phase : ZB-MR2 Signal #2 Phase: ZB-MR1
 Signal #1 Info : 30M x 0.32mm x0.2 Signal #2 Info : 30M x 0.32mm x 0.50µm

Compound	RT#1	RT#2	Resp#1	Resp#2	ng/ml	ng/ml

System Monitoring Compounds						
1) SA Tetrachlo...	3.453	4.172	58200567	566.9E6	52.429	52.879
28) SA Decachlor...	8.212	9.374	60813122	353.6E6	48.703	54.041
Target Compounds						
2) A alpha-BHC	3.893	4.569	90893117	852.2E6	55.701	55.265
3) MA gamma-BHC...	4.177	4.860	83192303	765.3E6	48.634	54.200
4) MA Heptachlor	4.474	5.388	79609657	732.6E6	53.681	53.624
5) MB Aldrin	4.722	5.701	80602627	719.8E6	55.348	54.465
6) B beta-BHC	4.427	5.024	35981871	333.4E6	51.756	54.262
7) B delta-BHC	4.632	5.250	82522556	717.8E6	55.630	53.525
8) B Heptachlo...	5.166	6.089	74286109	625.1E6	54.193	52.820
9) A Endosulfan I	5.506	6.452	69650546	587.7E6	53.972	54.414
10) B gamma-Chl...	5.393	6.326	74538957	639.5E6	53.622	54.922
11) B alpha-Chl...	5.452	6.401	73522583	621.5E6	53.460	54.342
12) B 4,4'-DDE	5.618	6.551	69044066	586.6E6	54.566	54.299
13) MA Dieldrin	5.750	6.711	72924766	608.2E6	54.045	54.554
14) MA Endrin	6.007	6.932	61698563	490.2E6	51.030	54.048
15) B Endosulfa...	6.282	7.137	61159495	492.8E6	52.851	56.964
16) A 4,4'-DDD	6.136	7.042	60735504	490.1E6	55.723	56.900m
17) MA 4,4'-DDT	6.376	7.346	55245834	466.6E6	51.384	53.798
18) B Endrin al...	6.452	7.261	46834245	372.1E6	50.742	53.824
19) B Endosulfa...	6.664	7.487	63797436	467.9E6	52.742	54.806
20) A Methoxychlor	6.926	7.800	31461839	228.5E6	49.527	53.006
21) B Endrin ke...	7.157	7.962	75660465	508.6E6	53.736	56.250
22) Mirex	7.340	8.428	56735652	346.6E6	49.872	53.772

(f)=RT Delta > 1/2 Window (#)=Amounts differ by > 25% (m)=manual int.

Data Path : Z:\pestpcbsrv\HPCHEM1\ECD_D\Data\PD051622\
 Data File : PD069652.D
 Signal(s) : Signal #1: ECD1A.ch Signal #2: ECD2B.ch
 Acq On : 16 May 2022 17:00
 Operator : AR\AJ
 Sample : PSTDCCC050
 Misc :
 ALS Vial : 4 Sample Multiplier: 1

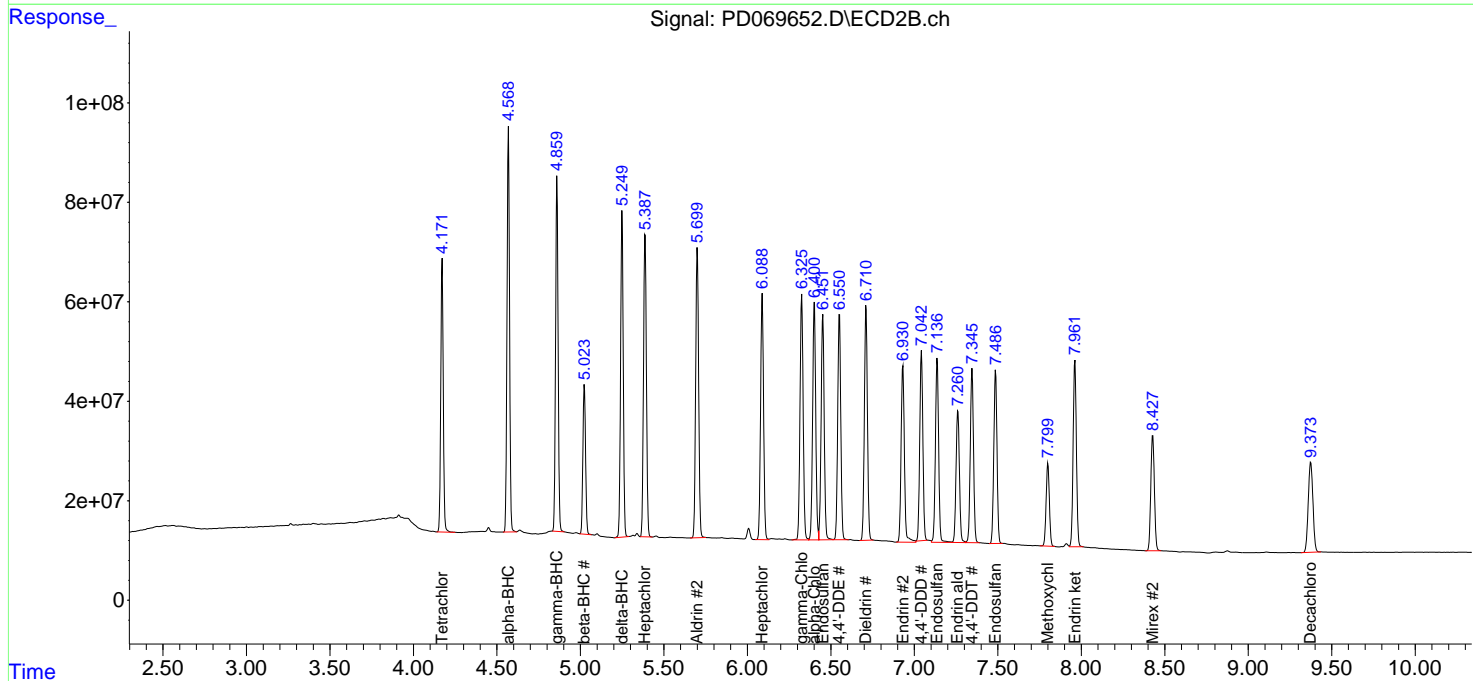
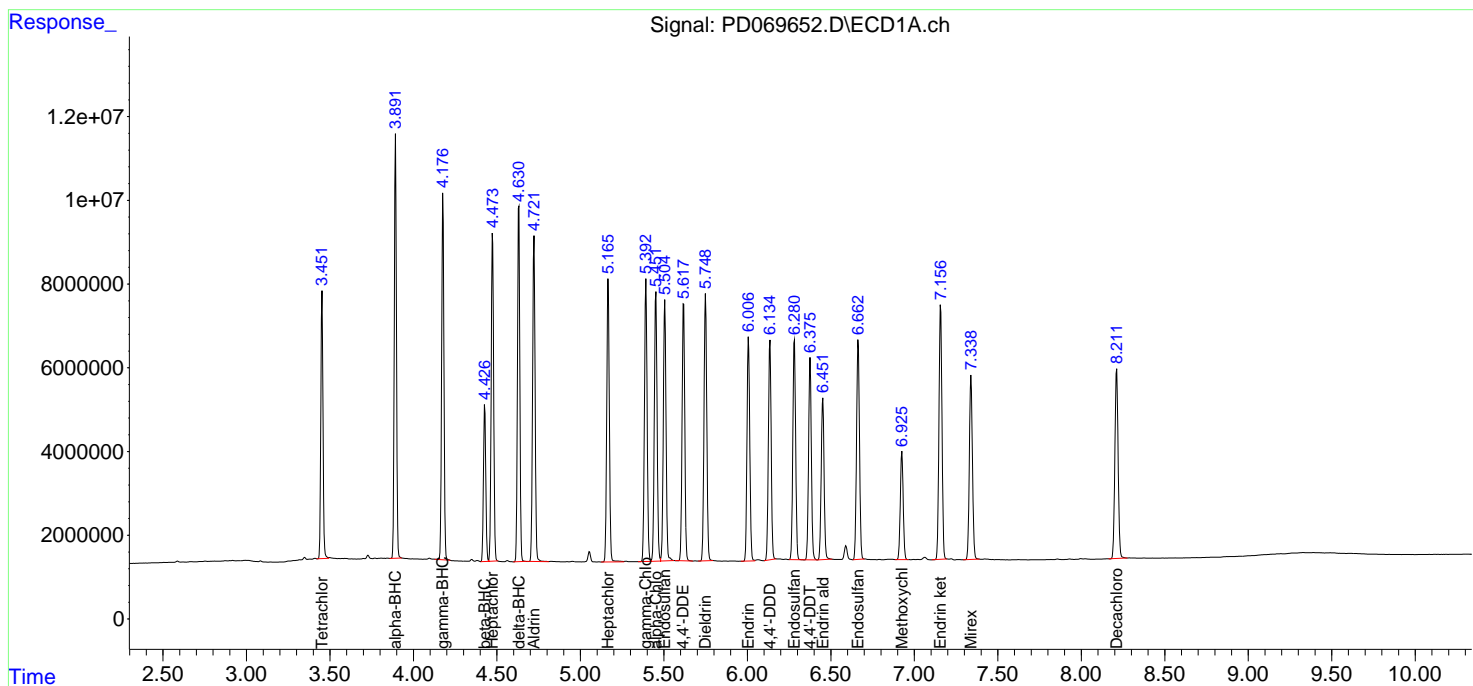
Instrument :
 ECD_D
ClientSampleId :
 PSTDCCC050

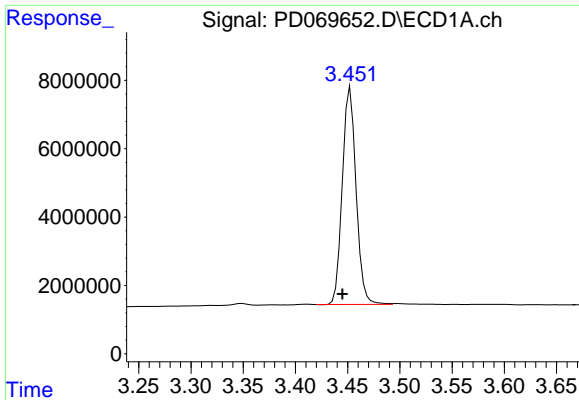
Manual Integrations
APPROVED

Reviewed By :Abdul Mirza 05/17/2022
 Supervised By :mohammad ahmed 05/17/2022

Integration File signal 1: autoint1.e
 Integration File signal 2: autoint2.e
 Quant Time: May 17 00:53:20 2022
 Quant Method : Z:\pestpcbsrv\HPCHEM1\ECD_D\Method\PD041622.M
 Quant Title : GC Extractables
 QLast Update : Mon Apr 18 13:40:55 2022
 Response via : Initial Calibration
 Integrator: ChemStation

Volume Inj. : 2 µl
 Signal #1 Phase : ZB-MR2 Signal #2 Phase: ZB-MR1
 Signal #1 Info : 30M x 0.32mm x0.2 Signal #2 Info : 30M x 0.32mm x 0.50µm



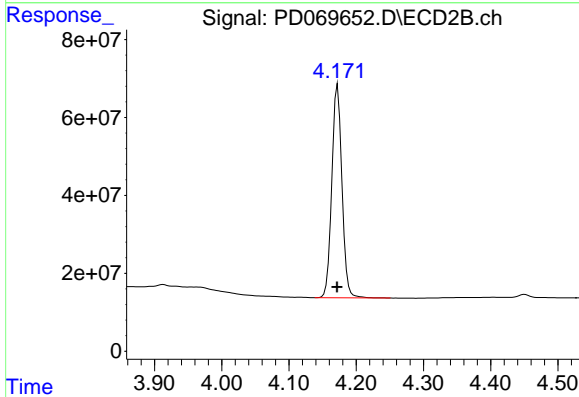


#1 Tetrachloro-m-xylene

R.T.: 3.453 min
 Delta R.T.: 0.008 min
 Response: 58200567
 Conc: 52.43 ng/ml

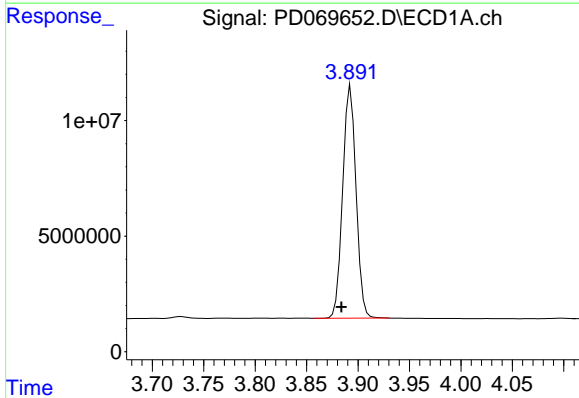
Instrument : ECD_D
 ClientSampleId : PSTDCCC050

Manual Integrations
APPROVED
 Reviewed By :Abdul Mirza 05/17/2022
 Supervised By :mohammad ahmed 05/17/2022



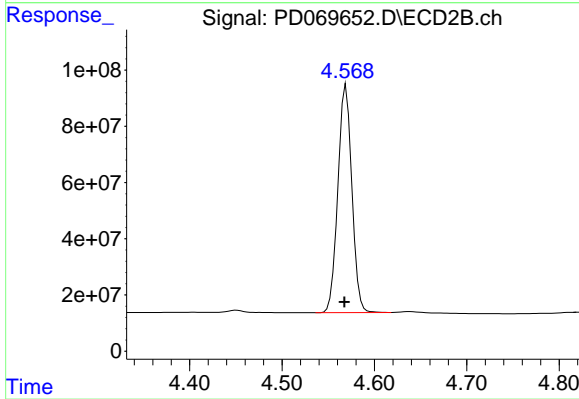
#1 Tetrachloro-m-xylene

R.T.: 4.172 min
 Delta R.T.: 0.000 min
 Response: 566948946
 Conc: 52.88 ng/ml



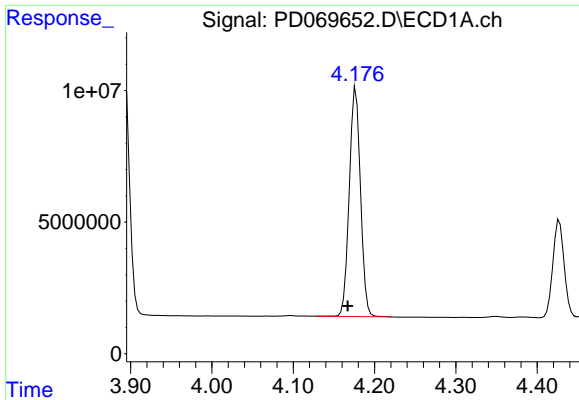
#2 alpha-BHC

R.T.: 3.893 min
 Delta R.T.: 0.009 min
 Response: 90893117
 Conc: 55.70 ng/ml



#2 alpha-BHC

R.T.: 4.569 min
 Delta R.T.: 0.002 min
 Response: 852195839
 Conc: 55.27 ng/ml



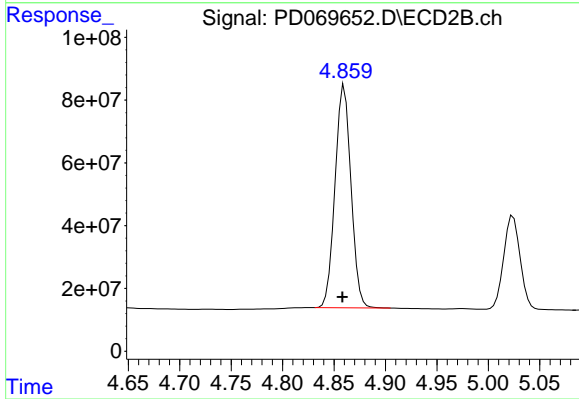
#3 gamma-BHC (Lindane)

R.T.: 4.177 min
 Delta R.T.: 0.010 min
 Response: 83192303
 Conc: 48.63 ng/ml

Instrument :
 ECD_D
 ClientSampleId :
 PSTDCCC050

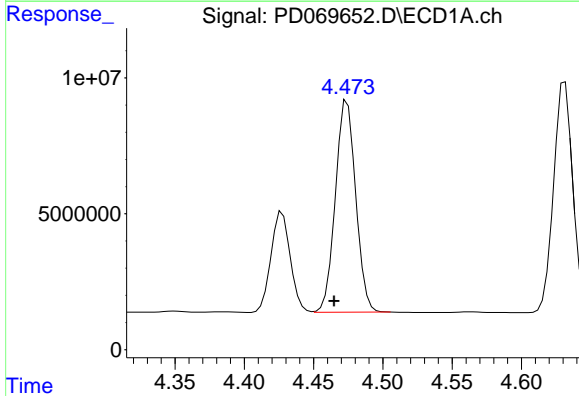
Manual Integrations
 APPROVED

Reviewed By :Abdul Mirza 05/17/2022
 Supervised By :mohammad ahmed 05/17/2022



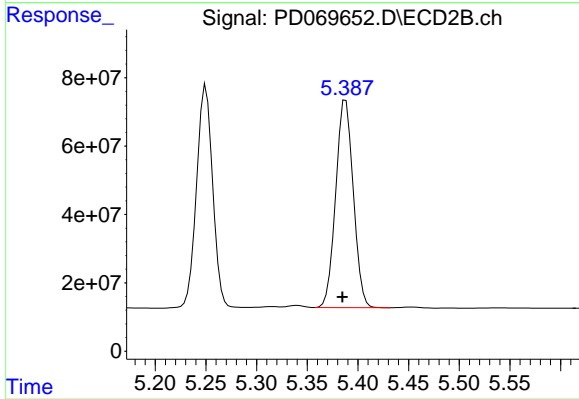
#3 gamma-BHC (Lindane)

R.T.: 4.860 min
 Delta R.T.: 0.002 min
 Response: 765332923
 Conc: 54.20 ng/ml



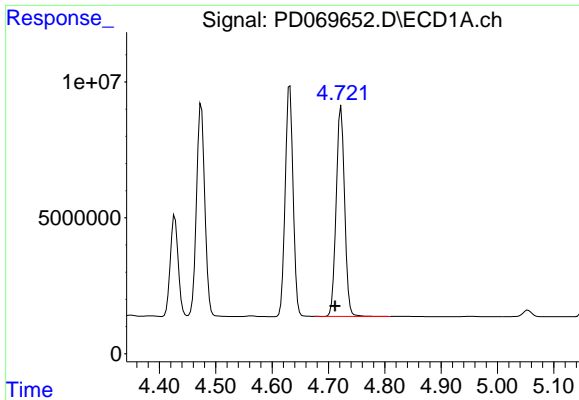
#4 Heptachlor

R.T.: 4.474 min
 Delta R.T.: 0.010 min
 Response: 79609657
 Conc: 53.68 ng/ml



#4 Heptachlor

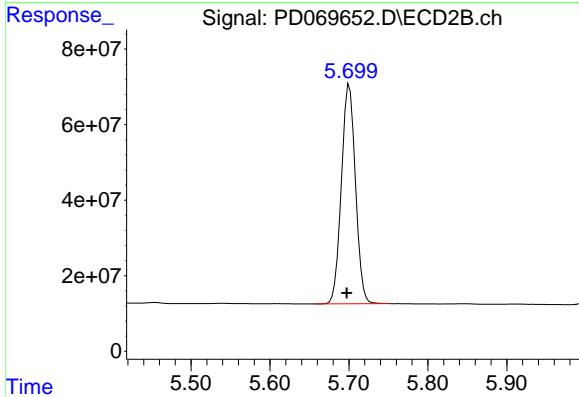
R.T.: 5.388 min
 Delta R.T.: 0.003 min
 Response: 732596770
 Conc: 53.62 ng/ml



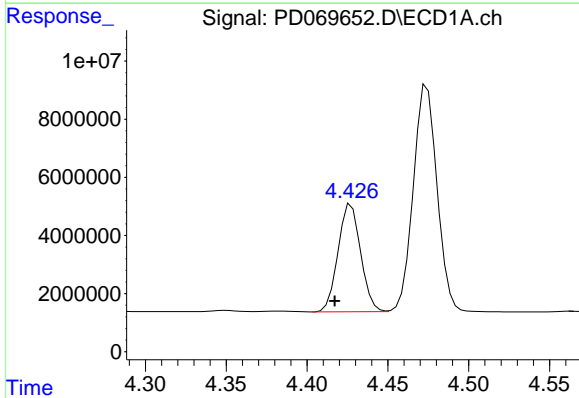
#5 Aldrin
 R.T.: 4.722 min
 Delta R.T.: 0.011 min
 Response: 80602627
 Conc: 55.35 ng/ml

Instrument : ECD_D
 ClientSampleId : PSTDCCC050

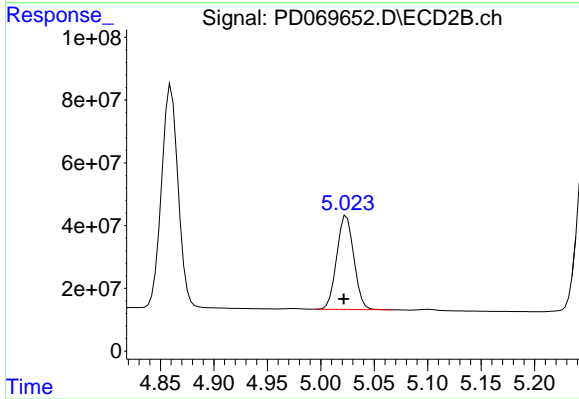
Manual Integrations
APPROVED
 Reviewed By :Abdul Mirza 05/17/2022
 Supervised By :mohammad ahmed 05/17/2022



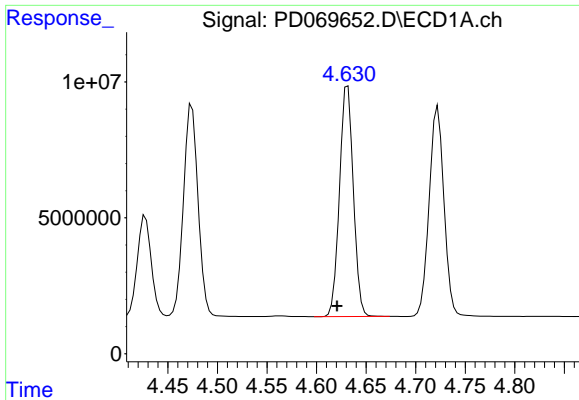
#5 Aldrin
 R.T.: 5.701 min
 Delta R.T.: 0.003 min
 Response: 719767830
 Conc: 54.47 ng/ml



#6 beta-BHC
 R.T.: 4.427 min
 Delta R.T.: 0.010 min
 Response: 35981871
 Conc: 51.76 ng/ml



#6 beta-BHC
 R.T.: 5.024 min
 Delta R.T.: 0.003 min
 Response: 333365576
 Conc: 54.26 ng/ml



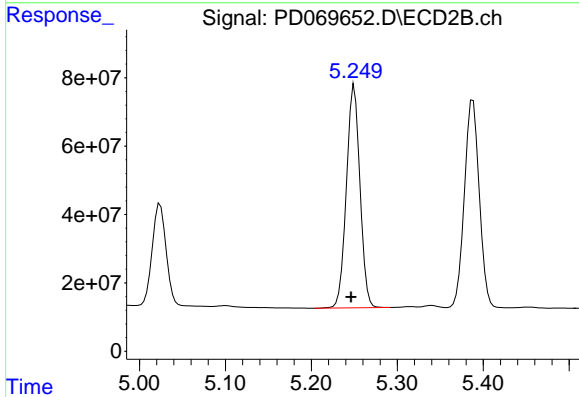
#7 delta-BHC

R.T.: 4.632 min
 Delta R.T.: 0.011 min
 Response: 82522556
 Conc: 55.63 ng/ml

Instrument :
 ECD_D
 ClientSampleId :
 PSTDCCC050

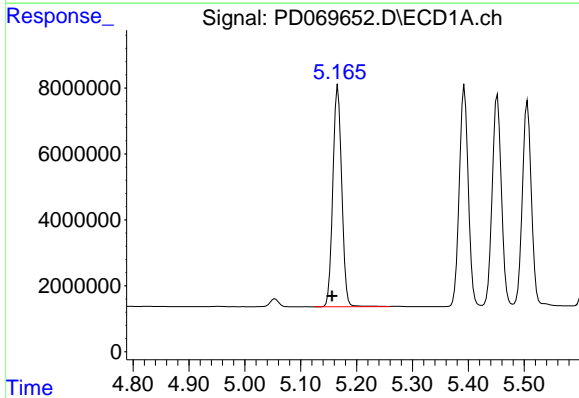
Manual Integrations
 APPROVED

Reviewed By :Abdul Mirza 05/17/2022
 Supervised By :mohammad ahmed 05/17/2022



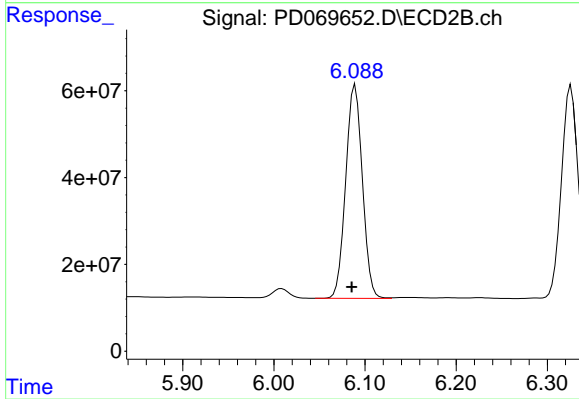
#7 delta-BHC

R.T.: 5.250 min
 Delta R.T.: 0.004 min
 Response: 717808731
 Conc: 53.52 ng/ml



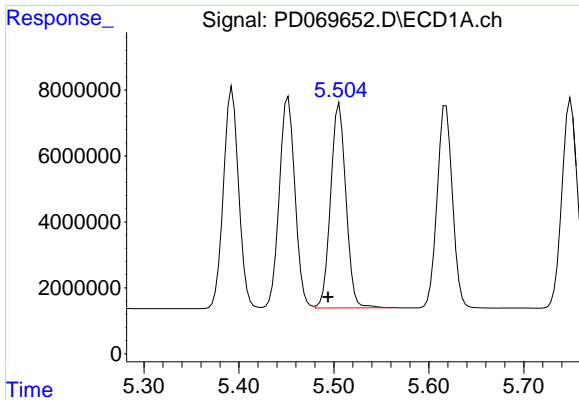
#8 Heptachlor epoxide

R.T.: 5.166 min
 Delta R.T.: 0.010 min
 Response: 74286109
 Conc: 54.19 ng/ml



#8 Heptachlor epoxide

R.T.: 6.089 min
 Delta R.T.: 0.004 min
 Response: 625076068
 Conc: 52.82 ng/ml



#9 Endosulfan I

R.T.: 5.506 min
 Delta R.T.: 0.012 min
 Response: 69650546
 Conc: 53.97 ng/ml

Instrument :

ECD_D

ClientSampleId :

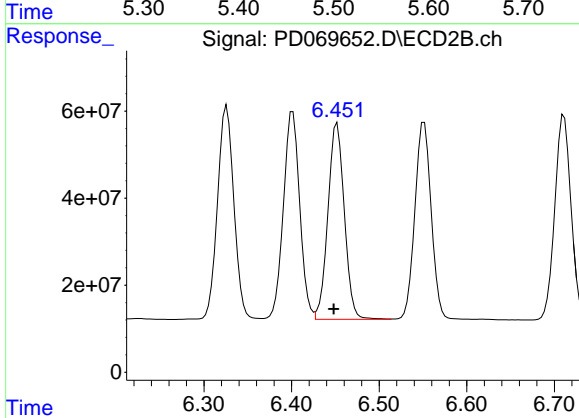
PSTDCCC050

Manual Integrations

APPROVED

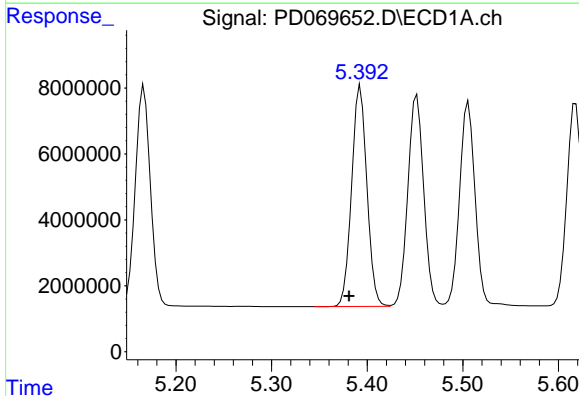
Reviewed By :Abdul Mirza 05/17/2022

Supervised By :mohammad ahmed 05/17/2022



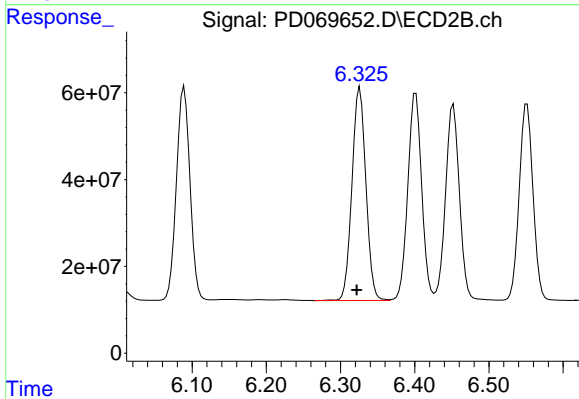
#9 Endosulfan I

R.T.: 6.452 min
 Delta R.T.: 0.004 min
 Response: 587672818
 Conc: 54.41 ng/ml



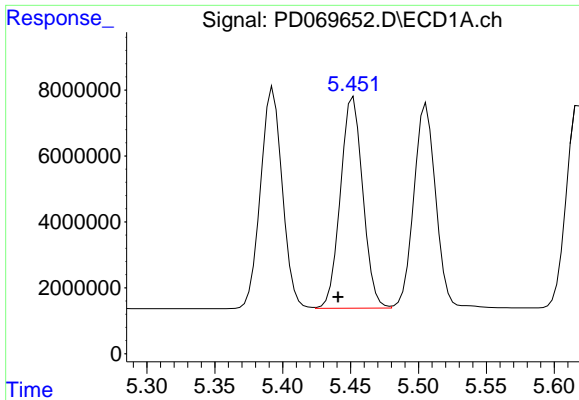
#10 gamma-Chlordane

R.T.: 5.393 min
 Delta R.T.: 0.012 min
 Response: 74538957
 Conc: 53.62 ng/ml



#10 gamma-Chlordane

R.T.: 6.326 min
 Delta R.T.: 0.004 min
 Response: 639524751
 Conc: 54.92 ng/ml



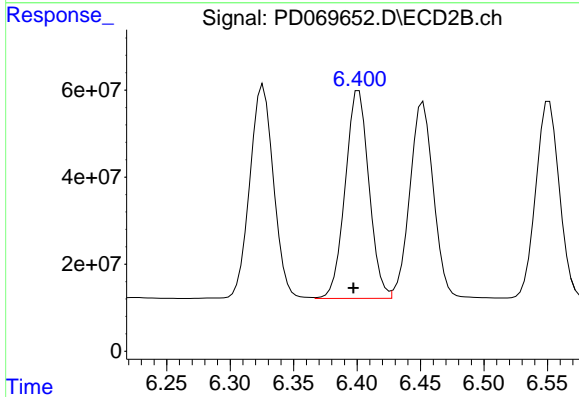
#11 alpha-Chlordane

R.T.: 5.452 min
 Delta R.T.: 0.011 min
 Response: 73522583
 Conc: 53.46 ng/ml

Instrument :
 ECD_D
 ClientSampleId :
 PSTDCCC050

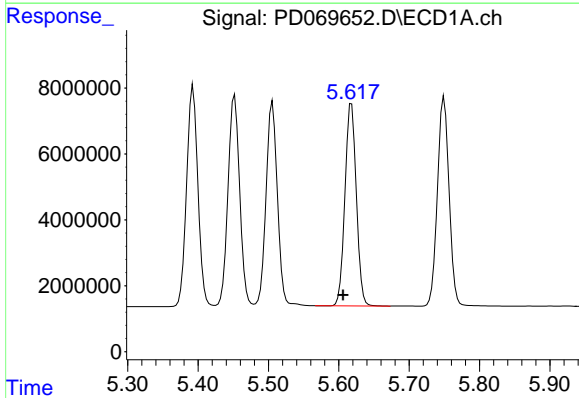
Manual Integrations
 APPROVED

Reviewed By :Abdul Mirza 05/17/2022
 Supervised By :mohammad ahmed 05/17/2022



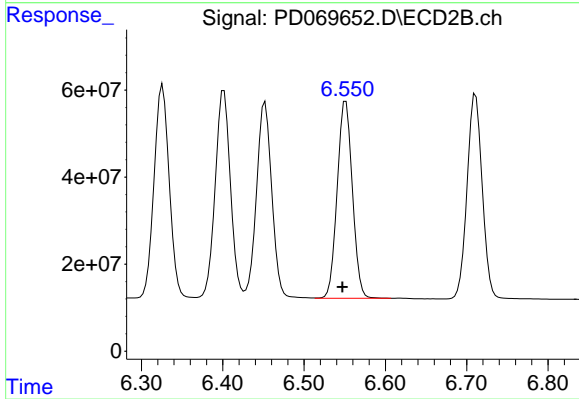
#11 alpha-Chlordane

R.T.: 6.401 min
 Delta R.T.: 0.004 min
 Response: 621536586
 Conc: 54.34 ng/ml



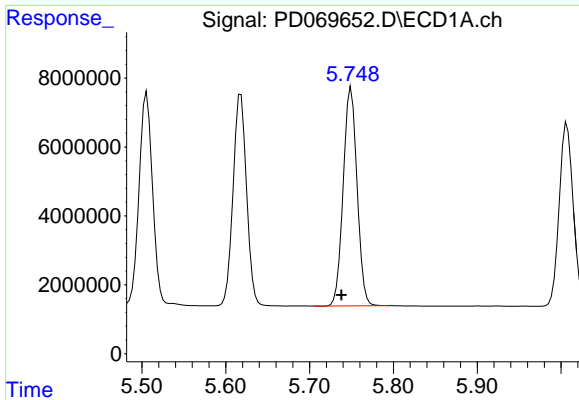
#12 4,4'-DDE

R.T.: 5.618 min
 Delta R.T.: 0.012 min
 Response: 69044066
 Conc: 54.57 ng/ml



#12 4,4'-DDE

R.T.: 6.551 min
 Delta R.T.: 0.004 min
 Response: 586554581
 Conc: 54.30 ng/ml



#13 Dieldrin

R.T.: 5.750 min
 Delta R.T.: 0.012 min
 Response: 72924766
 Conc: 54.04 ng/ml

Instrument :

ECD_D

ClientSampleId :

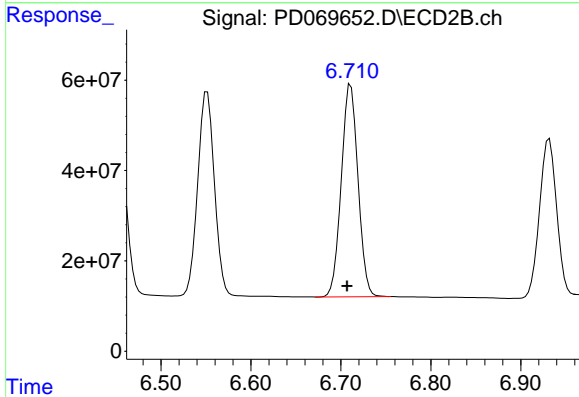
PSTDCCC050

Manual Integrations

APPROVED

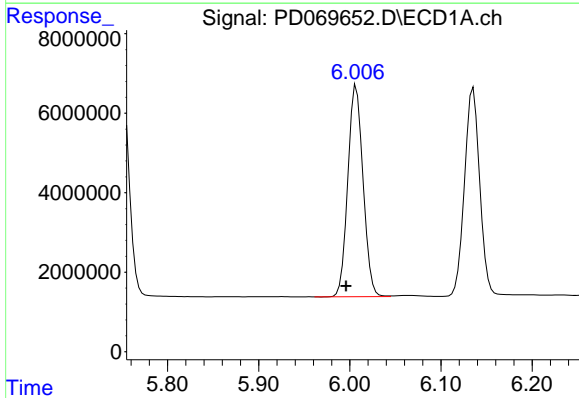
Reviewed By :Abdul Mirza 05/17/2022

Supervised By :mohammad ahmed 05/17/2022



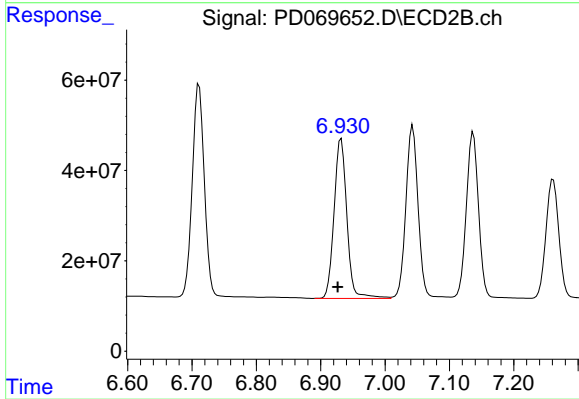
#13 Dieldrin

R.T.: 6.711 min
 Delta R.T.: 0.004 min
 Response: 608168638
 Conc: 54.55 ng/ml



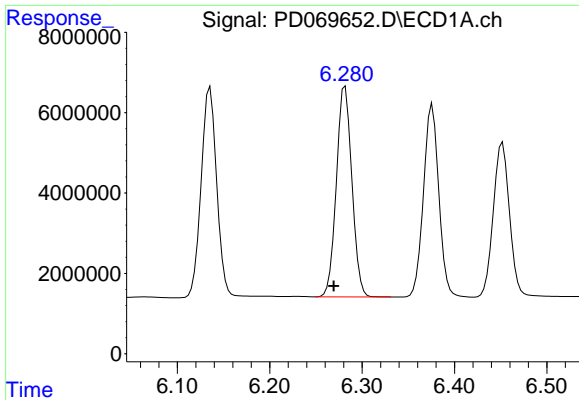
#14 Endrin

R.T.: 6.007 min
 Delta R.T.: 0.011 min
 Response: 61698563
 Conc: 51.03 ng/ml



#14 Endrin

R.T.: 6.932 min
 Delta R.T.: 0.005 min
 Response: 490223548
 Conc: 54.05 ng/ml



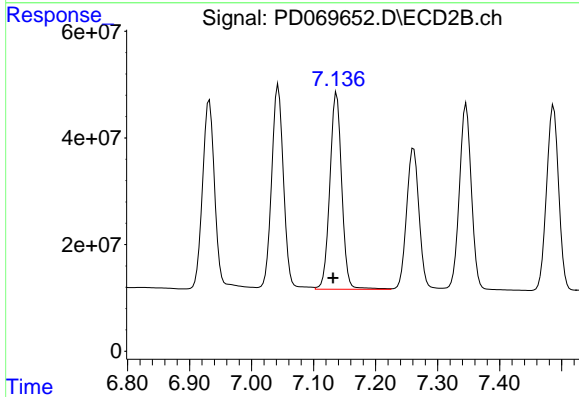
#15 Endosulfan II

R.T.: 6.282 min
 Delta R.T.: 0.012 min
 Response: 61159495
 Conc: 52.85 ng/ml

Instrument : ECD_D
 ClientSampleId : PSTDCCC050

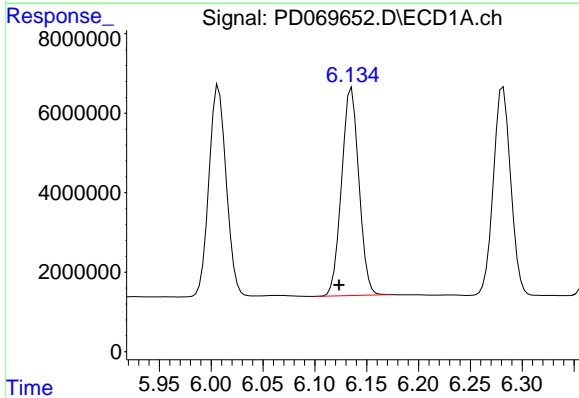
Manual Integrations
 APPROVED

Reviewed By :Abdul Mirza 05/17/2022
 Supervised By :mohammad ahmed 05/17/2022



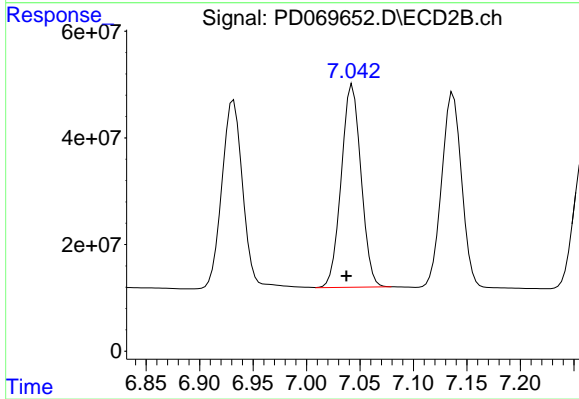
#15 Endosulfan II

R.T.: 7.137 min
 Delta R.T.: 0.006 min
 Response: 492847239
 Conc: 56.96 ng/ml



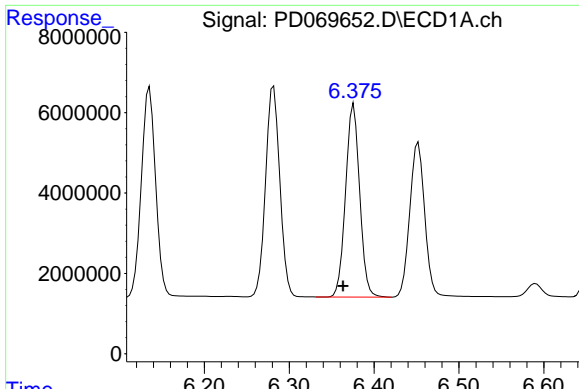
#16 4,4'-DDD

R.T.: 6.136 min
 Delta R.T.: 0.012 min
 Response: 60735504
 Conc: 55.72 ng/ml



#16 4,4'-DDD

R.T.: 7.042 min
 Delta R.T.: 0.004 min
 Response: 490098444
 Conc: 56.90 ng/ml m



#17 4,4'-DDT

R.T.: 6.376 min
 Delta R.T.: 0.013 min
 Response: 55245834
 Conc: 51.38 ng/ml

Instrument :

ECD_D

ClientSampleId :

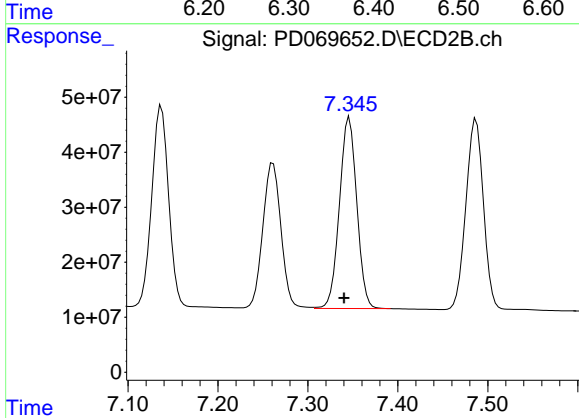
PSTDCCC050

Manual Integrations

APPROVED

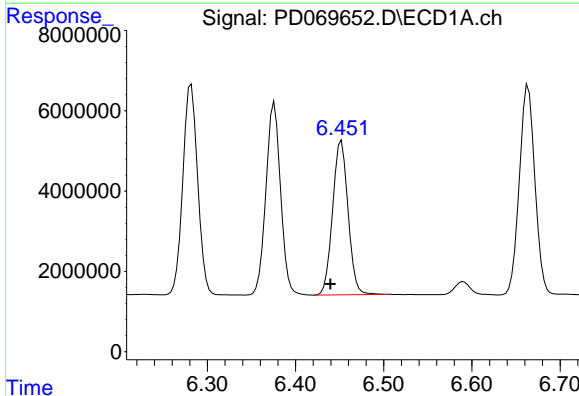
Reviewed By :Abdul Mirza 05/17/2022

Supervised By :mohammad ahmed 05/17/2022



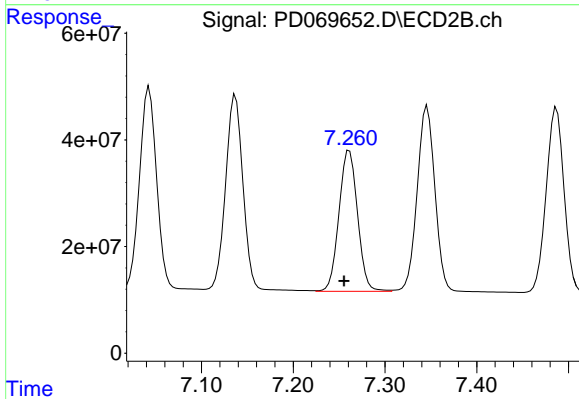
#17 4,4'-DDT

R.T.: 7.346 min
 Delta R.T.: 0.006 min
 Response: 466633557
 Conc: 53.80 ng/ml



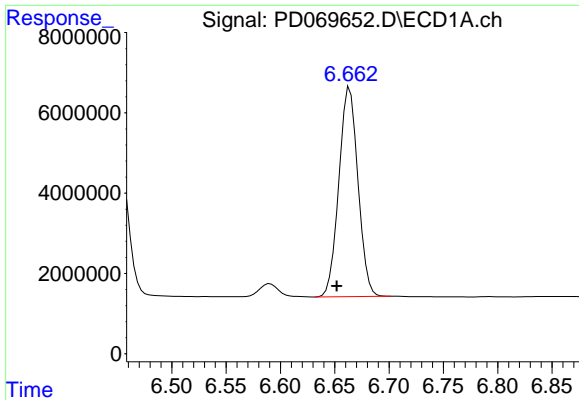
#18 Endrin aldehyde

R.T.: 6.452 min
 Delta R.T.: 0.013 min
 Response: 46834245
 Conc: 50.74 ng/ml



#18 Endrin aldehyde

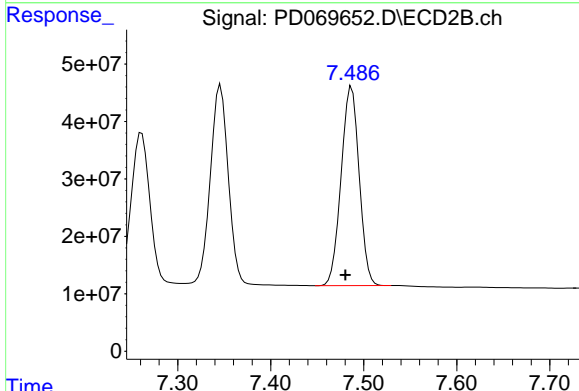
R.T.: 7.261 min
 Delta R.T.: 0.006 min
 Response: 372091135
 Conc: 53.82 ng/ml



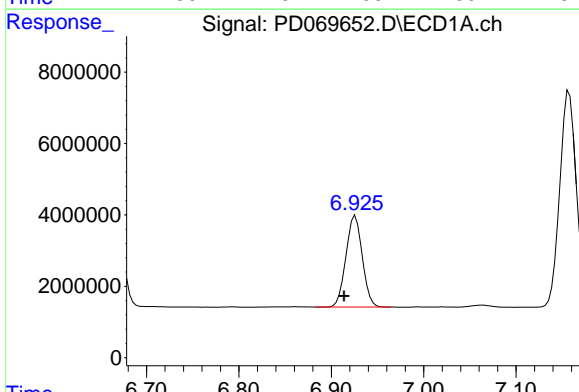
#19 Endosulfan Sulfate
 R.T.: 6.664 min
 Delta R.T.: 0.012 min
 Response: 63797436
 Conc: 52.74 ng/ml

Instrument : ECD_D
 ClientSampleId : PSTDCCC050

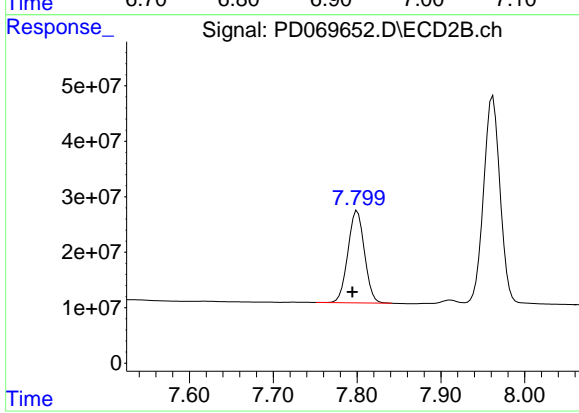
Manual Integrations
APPROVED
 Reviewed By :Abdul Mirza 05/17/2022
 Supervised By :mohammad ahmed 05/17/2022



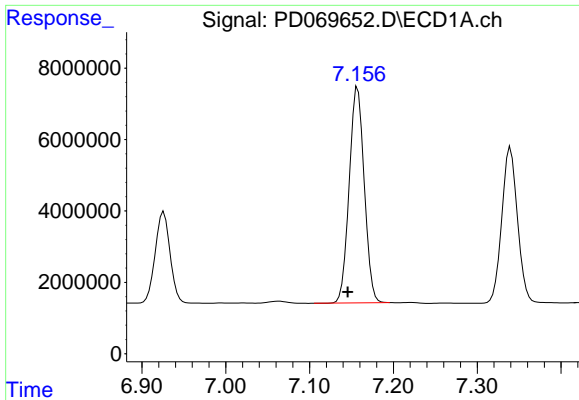
#19 Endosulfan Sulfate
 R.T.: 7.487 min
 Delta R.T.: 0.007 min
 Response: 467854509
 Conc: 54.81 ng/ml



#20 Methoxychlor
 R.T.: 6.926 min
 Delta R.T.: 0.013 min
 Response: 31461839
 Conc: 49.53 ng/ml



#20 Methoxychlor
 R.T.: 7.800 min
 Delta R.T.: 0.006 min
 Response: 228513928
 Conc: 53.01 ng/ml



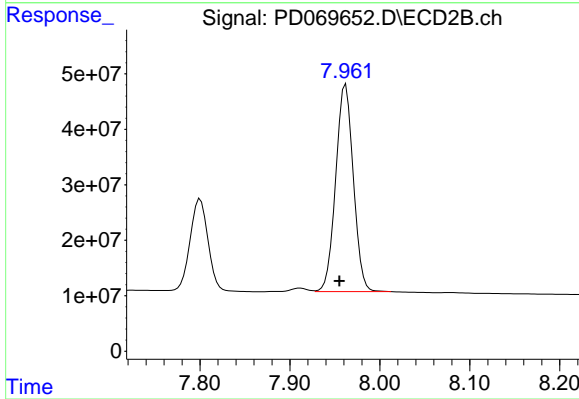
#21 Endrin ketone

R.T.: 7.157 min
 Delta R.T.: 0.012 min
 Response: 75660465
 Conc: 53.74 ng/ml

Instrument :
 ECD_D
 ClientSampleId :
 PSTDCCC050

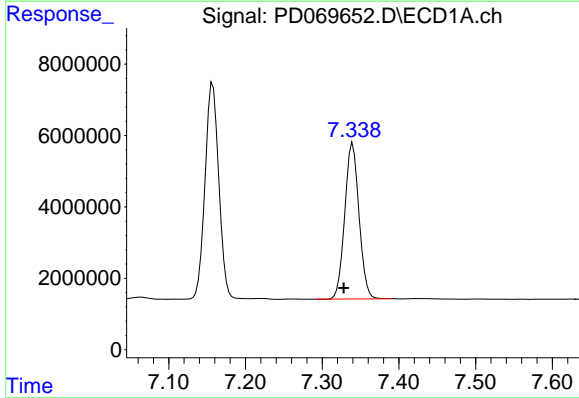
Manual Integrations
 APPROVED

Reviewed By :Abdul Mirza 05/17/2022
 Supervised By :mohammad ahmed 05/17/2022



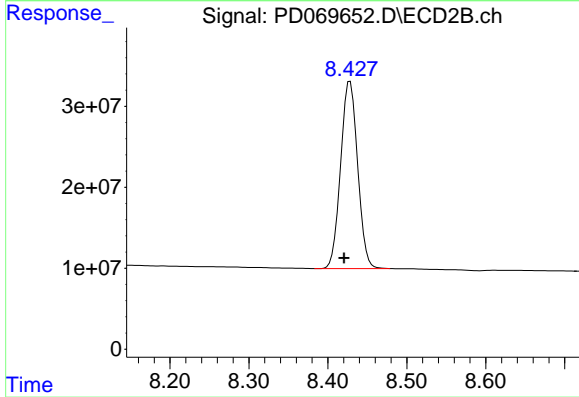
#21 Endrin ketone

R.T.: 7.962 min
 Delta R.T.: 0.007 min
 Response: 508589519
 Conc: 56.25 ng/ml



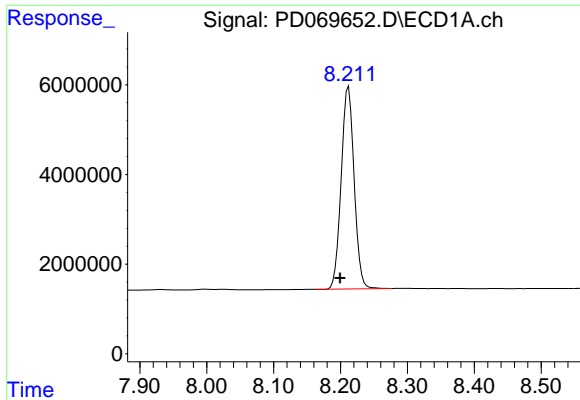
#22 Mirex

R.T.: 7.340 min
 Delta R.T.: 0.012 min
 Response: 56735652
 Conc: 49.87 ng/ml



#22 Mirex

R.T.: 8.428 min
 Delta R.T.: 0.008 min
 Response: 346638383
 Conc: 53.77 ng/ml



#28 Decachlorobiphenyl

R.T.: 8.212 min
Delta R.T.: 0.013 min
Response: 60813122
Conc: 48.70 ng/ml

Instrument :

ECD_D

ClientSampleId :

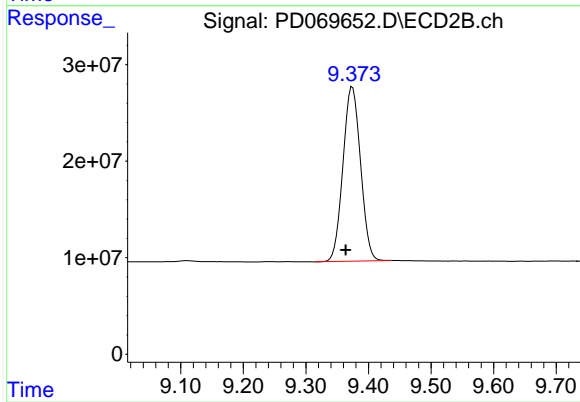
PSTDCCC050

Manual Integrations

APPROVED

Reviewed By :Abdul Mirza 05/17/2022

Supervised By :mohammad ahmed 05/17/2022



#28 Decachlorobiphenyl

R.T.: 9.374 min
Delta R.T.: 0.010 min
Response: 353641612
Conc: 54.04 ng/ml