

Data Path : Z:\pestpcbsrv\HPCHEM1\ECD_D\Data\PD051722\
 Data File : PD069665.D
 Signal(s) : Signal #1: ECD1A.ch Signal #2: ECD2B.ch
 Acq On : 17 May 2022 15:30
 Operator : AR\AJ
 Sample : N2766-20
 Misc :
 ALS Vial : 13 Sample Multiplier: 1

Instrument :
 ECD_D
 ClientSampleId :

Integration File signal 1: autoint1.e
 Integration File signal 2: autoint2.e
 Quant Time: May 20 06:00:21 2022
 Quant Method : Z:\pestpcbsrv\HPCHEM1\ECD_D\Method\PD050722CLP.M
 Quant Title : GC Extractables
 QLast Update : Wed May 18 23:46:25 2022
 Response via : Initial Calibration
 Integrator: ChemStation

Volume Inj. : 1 µl
 Signal #1 Phase : ZB-MR2 Signal #2 Phase: ZB-MR1
 Signal #1 Info : 30M x 0.32mm x0.2 Signal #2 Info : 30M x 0.32mm x 0.50µm

Compound	RT#1	RT#2	Resp#1	Resp#2	ng/ml	ng/ml

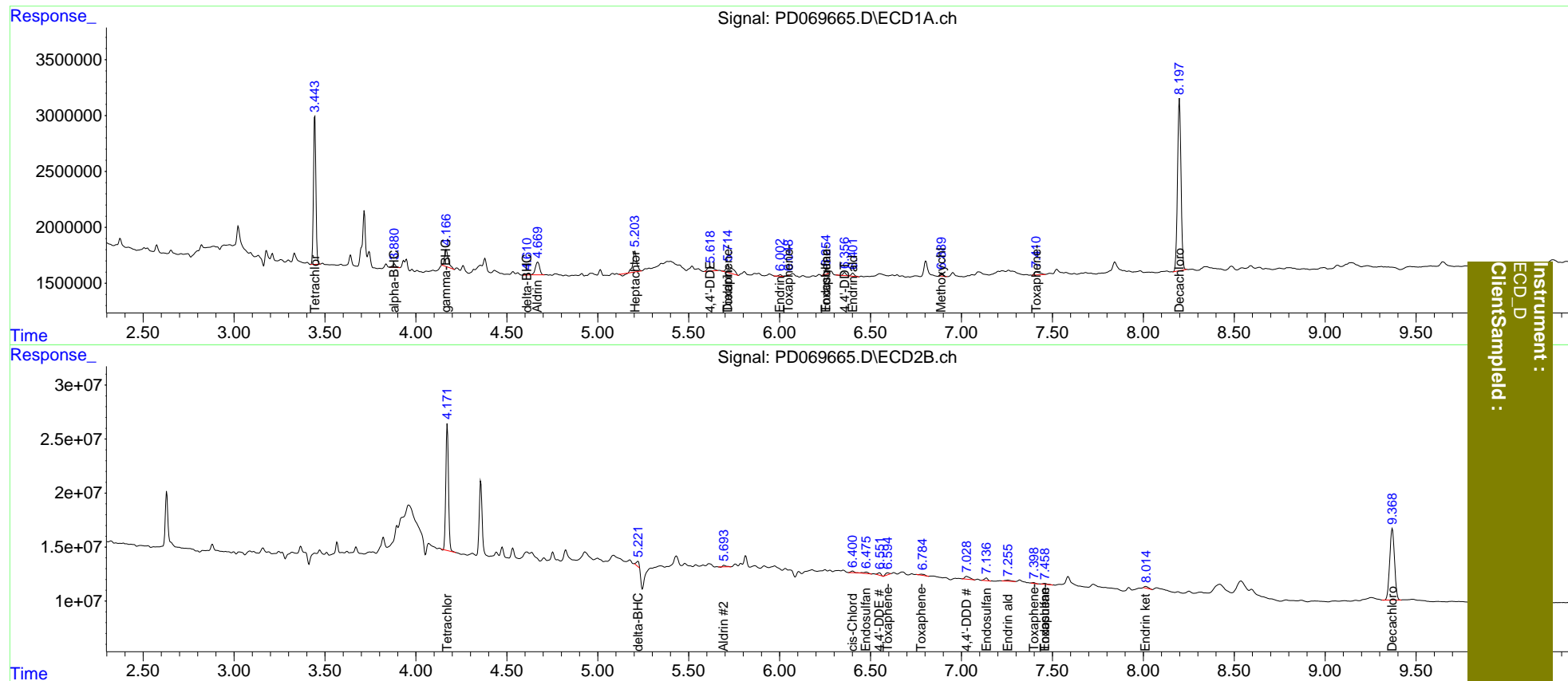
System Monitoring Compounds						
1) SA Tetrachlo...	3.444	4.173	12273880	119.8E6	10.097	9.447
2) SA Decachlor...	8.199	9.369	20682331	121.7E6	16.674	16.658
Target Compounds						
3) MA gamma-BHC...	4.167	0.000	2096263	0	1.252	N.D. #
5) MB Aldrin	4.670f	5.695	1865050	1642842	1.271	0.114 #
7) B delta-BHC	4.611	5.221f	152679	4450565	0.101	0.393 #
8) B Heptachlo...	5.204f	6.106	2518736	-3983783	1.813	N.D. #
9) A Endosulfan I	5.519	6.477	-15822	2648197	N.D.	0.210
10) B trans-Chl...	5.384	6.324	-466	772564	N.D.	<MDL
11) B cis-Chlor...	5.384f	6.401	-466	1866564	N.D.	0.146
12) B 4,4'-DDE	5.619	6.549	848112	2838468	0.651	0.246 #
13) MA Dieldrin	5.715	6.728	1754643	-1999881	1.183	N.D. #
14) MA Endrin	6.004	0.000	136510	0	0.105	N.D. #
15) B Endosulfa...	6.255	7.137	321831	3166023	0.276	0.331
16) A 4,4'-DDD	6.129	7.028	30983	5265724	<MDL	0.532 #
17) MA 4,4'-DDT	6.358	7.398f	288501	752673	0.247	<MDL #
18) B Endrin al...	6.403f	7.256	352766	2172626	0.339	0.263
19) B Endosulfa...	0.000	7.458	0	1624539	N.D.	0.174
20) A Methoxychlor	6.891	0.000	333763	0	0.508	N.D. #
21) B Endrin ke...	0.000	8.014f	0	2470998	N.D.	0.258
22) Toxaphene-1	5.715	6.595	1754643	2522828	223.026	28.071 #
23) Toxaphene-2	6.049	6.781	22153	1913790	2.711	18.996 #
24) Toxaphene-3	6.255f	7.398	321831	752673	36.987	2.908 #
25) Toxaphene-4	0.000	7.458	0	1624539	N.D.	8.086
26) Toxaphene-5	7.412f	0.000	589184	0	34.686	N.D. #

(f)=RT Delta > 1/2 Window (#)=Amounts differ by > 25% (m)=manual int.

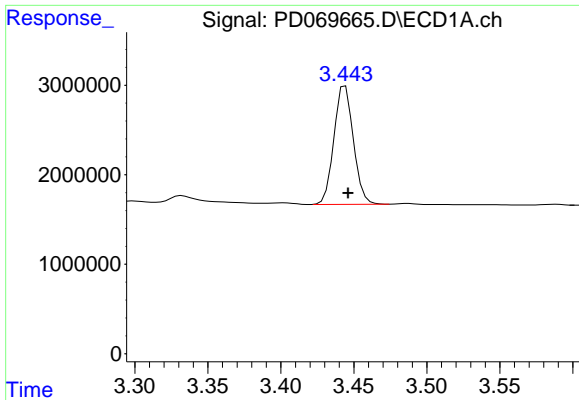
Data Path : Z:\pestpcbsrv\HPCHEM1\ECD_D\Data\PD051722\
 Data File : PD069665.D
 Signal(s) : Signal #1: ECD1A.ch Signal #2: ECD2B.ch
 Acq On : 17 May 2022 15:30
 Operator : AR\AJ
 Sample : N2766-20
 Misc :
 ALS Vial : 13 Sample Multiplier: 1

Integration File signal 1: autoint1.e
 Integration File signal 2: autoint2.e
 Quant Time: May 20 06:00:21 2022
 Quant Method : Z:\pestpcbsrv\HPCHEM1\ECD_D\Method\PD050722CLP.M
 Quant Title : GC Extractables
 QLast Update : Wed May 18 23:46:25 2022
 Response via : Initial Calibration
 Integrator: ChemStation

Volume Inj. : 1 µl
 Signal #1 Phase : ZB-MR2 Signal #2 Phase: ZB-MR1
 Signal #1 Info : 30M x 0.32mm x0.2 Signal #2 Info : 30M x 0.32mm x 0.50µm

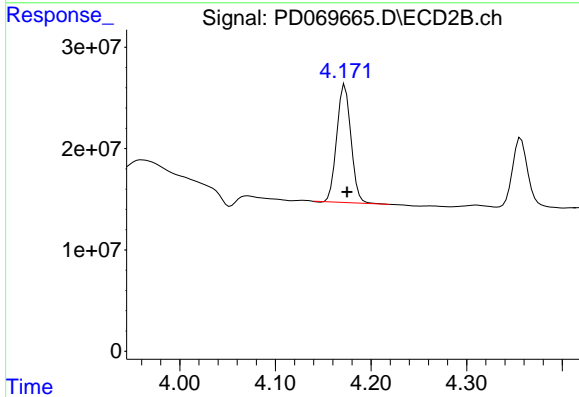


Instrument : ECD_D
 ClientSampled :

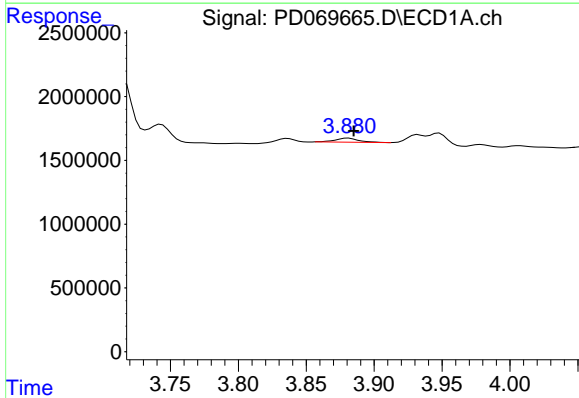


#1 Tetrachloro-m-xylene
 R.T.: 3.444 min
 Delta R.T.: -0.002 min
 Response: 12273880
 Conc: 10.10 ng/ml

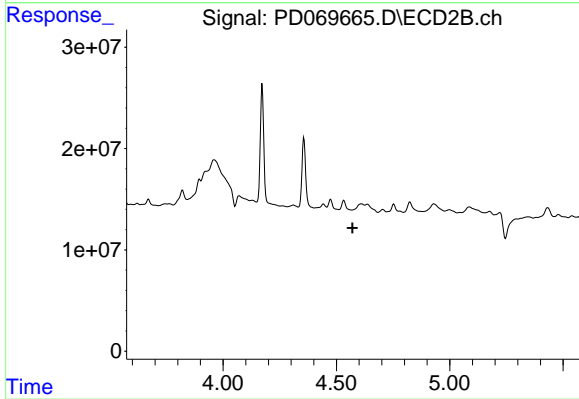
Instrument :
 ECD_D
 ClientSampleId :



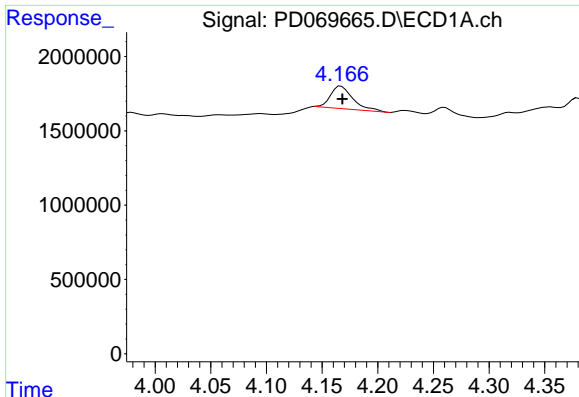
#1 Tetrachloro-m-xylene
 R.T.: 4.173 min
 Delta R.T.: -0.002 min
 Response: 119797533
 Conc: 9.45 ng/ml



#2 alpha-BHC
 R.T.: 3.881 min
 Delta R.T.: -0.004 min
 Response: 380093
 Conc: 0.22 ng/ml



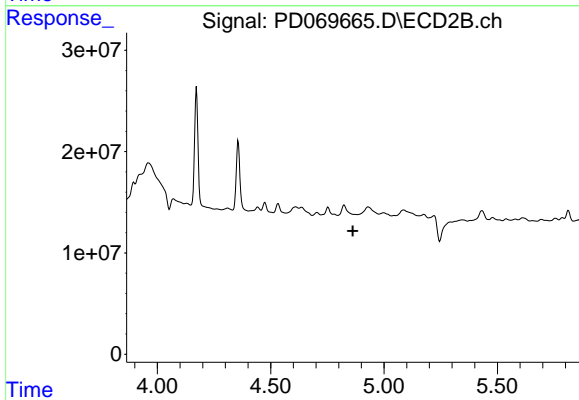
#2 alpha-BHC
 R.T.: 4.610 min
 Delta R.T.: 0.039 min
 Response: -12971627
 Conc: N.D.



#3 gamma-BHC (Lindane)

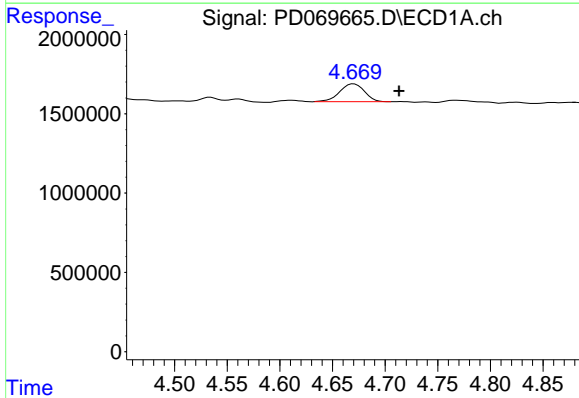
R.T.: 4.167 min
 Delta R.T.: -0.001 min
 Response: 2096263
 Conc: 1.25 ng/ml

Instrument :
 ECD_D
 ClientSampleId :



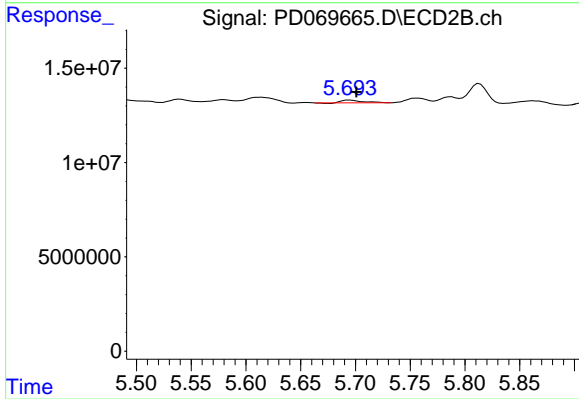
#3 gamma-BHC (Lindane)

R.T.: 0.000 min
 Exp R.T. : 4.862 min
 Response: 0
 Conc: N.D.



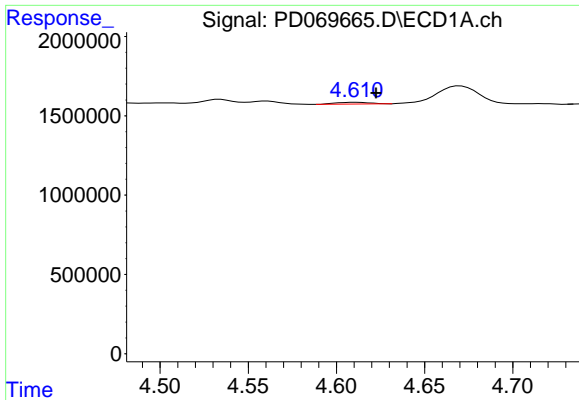
#5 Aldrin

R.T.: 4.670 min
 Delta R.T.: -0.043 min
 Response: 1865050
 Conc: 1.27 ng/ml



#5 Aldrin

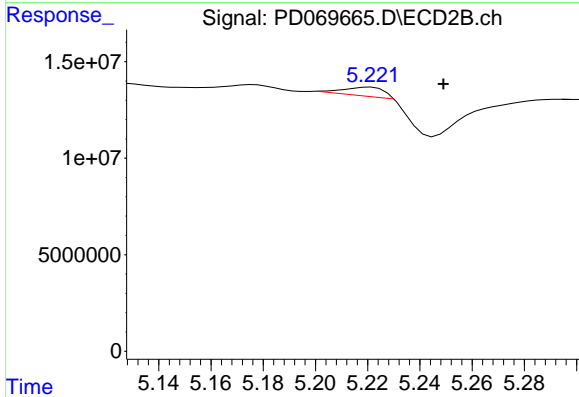
R.T.: 5.695 min
 Delta R.T.: -0.006 min
 Response: 1642842
 Conc: 0.11 ng/ml



#7 delta-BHC

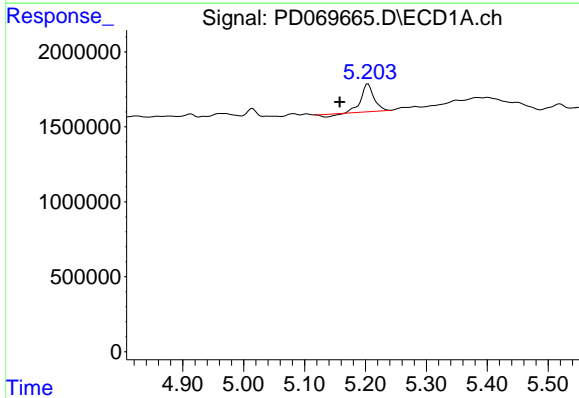
R.T.: 4.611 min
 Delta R.T.: -0.011 min
 Response: 152679
 Conc: 0.10 ng/ml

Instrument :
 ECD_D
 ClientSampleId :



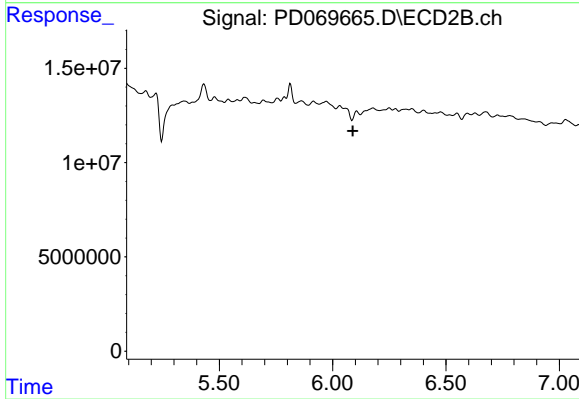
#7 delta-BHC

R.T.: 5.221 min
 Delta R.T.: -0.028 min
 Response: 4450565
 Conc: 0.39 ng/ml



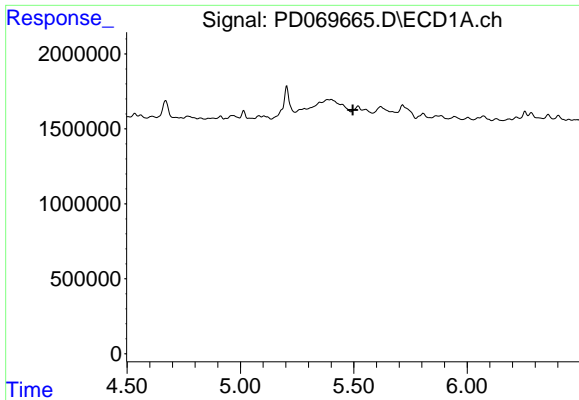
#8 Heptachlor epoxide

R.T.: 5.204 min
 Delta R.T.: 0.047 min
 Response: 2518736
 Conc: 1.81 ng/ml



#8 Heptachlor epoxide

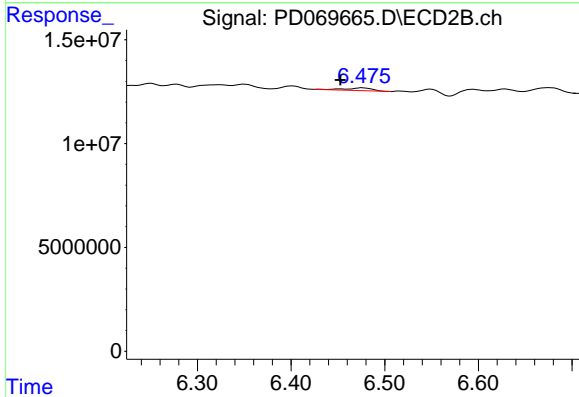
R.T.: 6.106 min
 Delta R.T.: 0.017 min
 Response: -3983783
 Conc: N.D.



#9 Endosulfan I

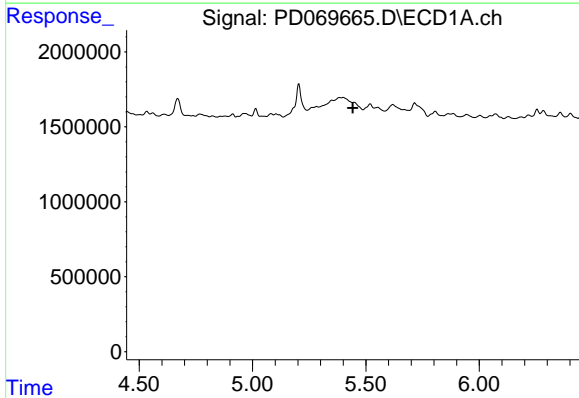
R.T.: 5.519 min
 Delta R.T.: 0.023 min
 Response: -15822
 Conc: N.D.

Instrument :
 ECD_D
 ClientSampleId :



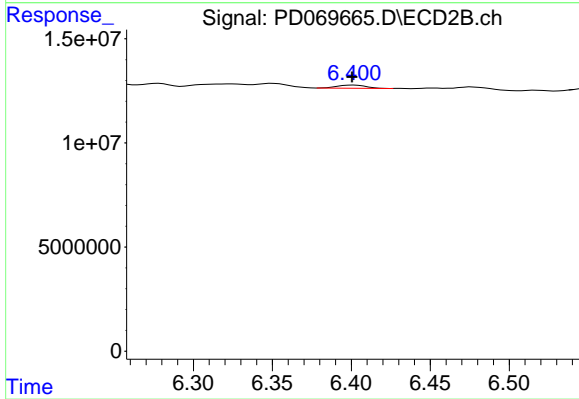
#9 Endosulfan I

R.T.: 6.477 min
 Delta R.T.: 0.024 min
 Response: 2648197
 Conc: 0.21 ng/ml



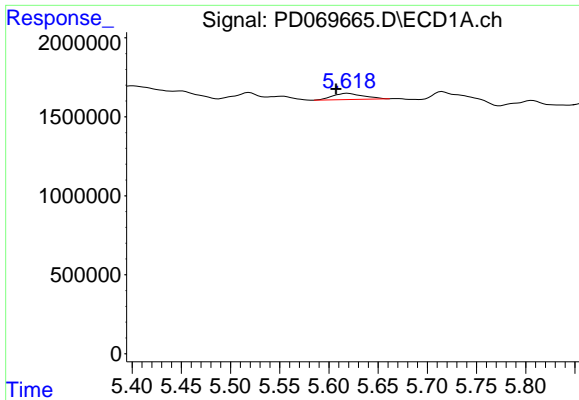
#11 cis-Chlordane

R.T.: 5.384 min
 Delta R.T.: -0.058 min
 Response: -466
 Conc: N.D.



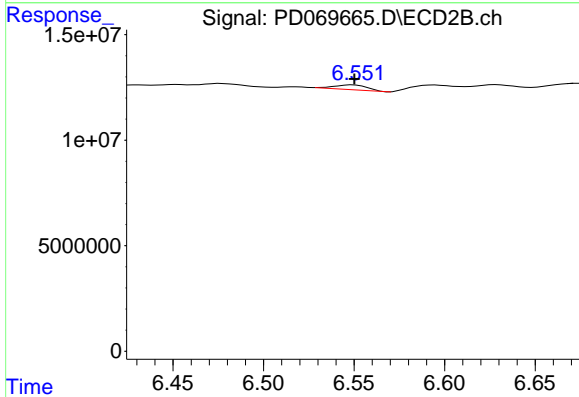
#11 cis-Chlordane

R.T.: 6.401 min
 Delta R.T.: 0.001 min
 Response: 1866564
 Conc: 0.15 ng/ml

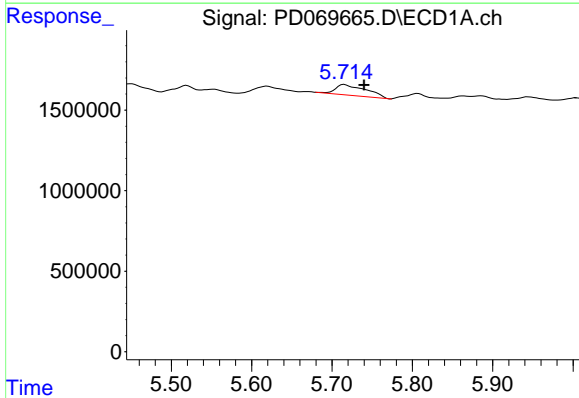


#12 4,4'-DDE
 R.T.: 5.619 min
 Delta R.T.: 0.012 min
 Response: 848112
 Conc: 0.65 ng/ml

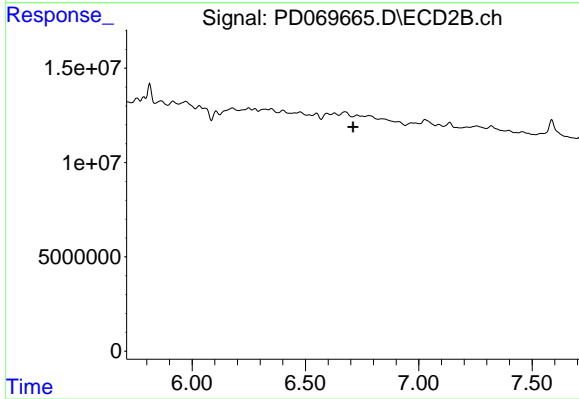
Instrument :
 ECD_D
 ClientSampleId :



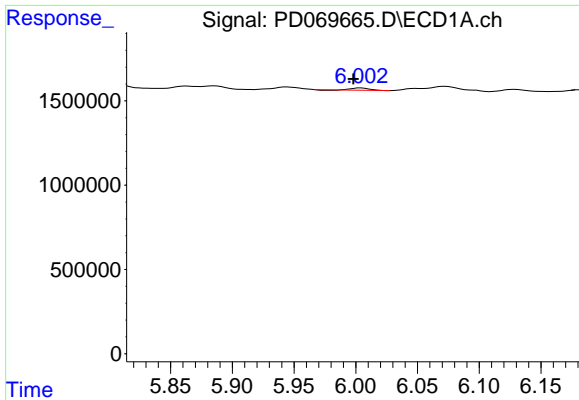
#12 4,4'-DDE
 R.T.: 6.549 min
 Delta R.T.: -0.001 min
 Response: 2838468
 Conc: 0.25 ng/ml



#13 Dieldrin
 R.T.: 5.715 min
 Delta R.T.: -0.024 min
 Response: 1754643
 Conc: 1.18 ng/ml



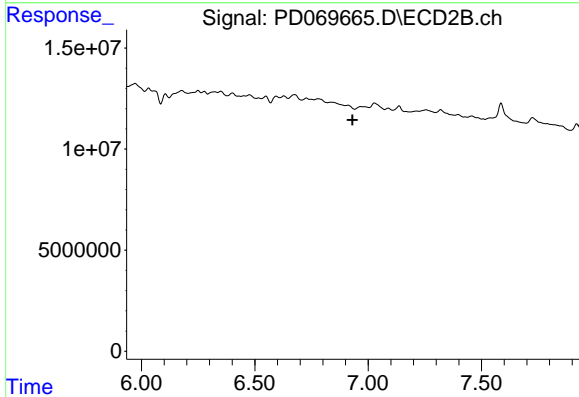
#13 Dieldrin
 R.T.: 6.728 min
 Delta R.T.: 0.017 min
 Response: -1999881
 Conc: N.D.



#14 Endrin

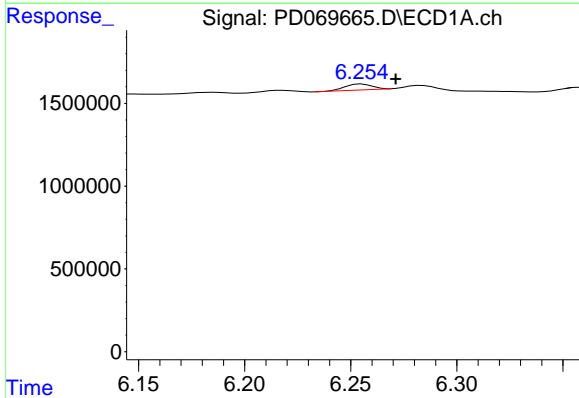
R.T.: 6.004 min
 Delta R.T.: 0.006 min
 Response: 136510
 Conc: 0.10 ng/ml

Instrument :
 ECD_D
 ClientSampleId :



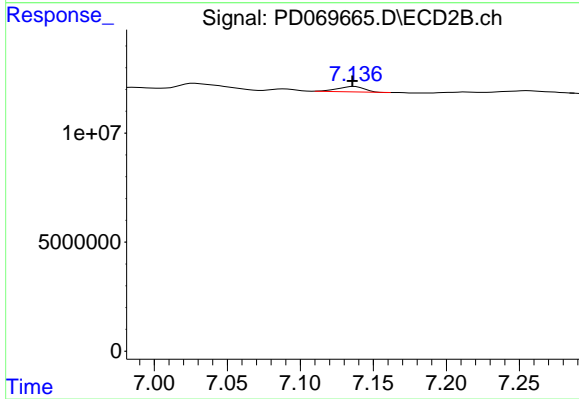
#14 Endrin

R.T.: 0.000 min
 Exp R.T. : 6.931 min
 Response: 0
 Conc: N.D.



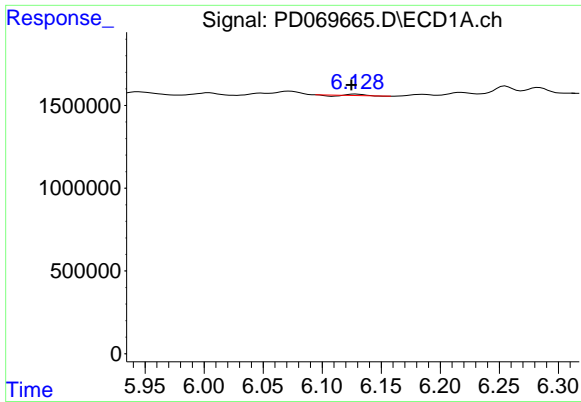
#15 Endosulfan II

R.T.: 6.255 min
 Delta R.T.: -0.016 min
 Response: 321831
 Conc: 0.28 ng/ml



#15 Endosulfan II

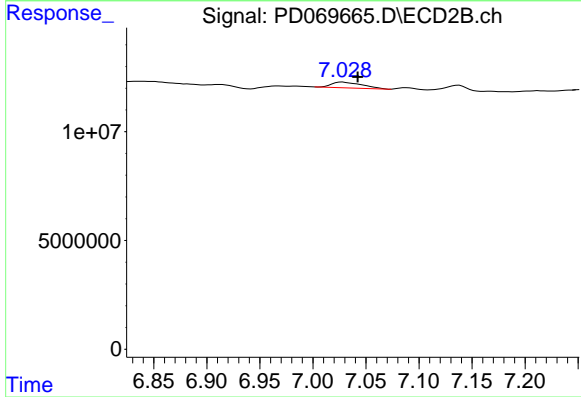
R.T.: 7.137 min
 Delta R.T.: 0.001 min
 Response: 3166023
 Conc: 0.33 ng/ml



#16 4,4'-DDD

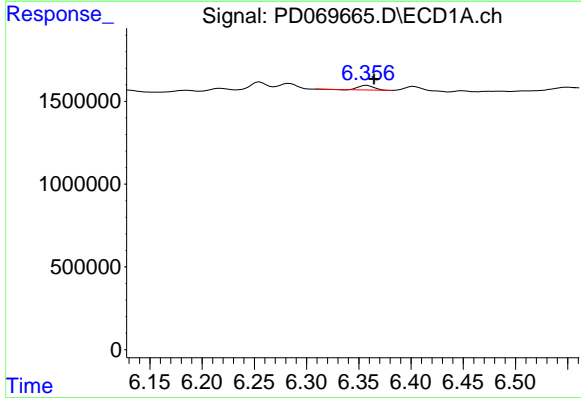
R.T.: 6.129 min
 Delta R.T.: 0.004 min
 Response: 30983
 Conc: N.D.

Instrument :
 ECD_D
 ClientSampleId :



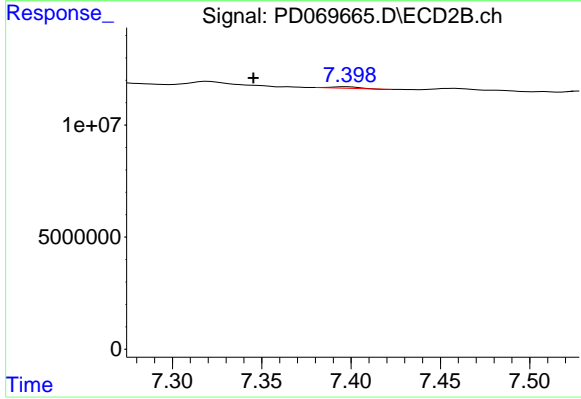
#16 4,4'-DDD

R.T.: 7.028 min
 Delta R.T.: -0.014 min
 Response: 5265724
 Conc: 0.53 ng/ml



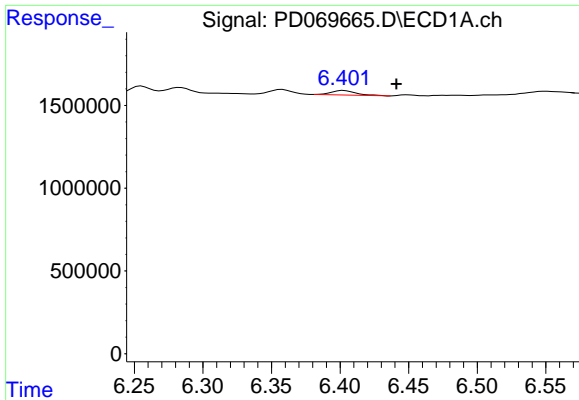
#17 4,4'-DDT

R.T.: 6.358 min
 Delta R.T.: -0.007 min
 Response: 288501
 Conc: 0.25 ng/ml



#17 4,4'-DDT

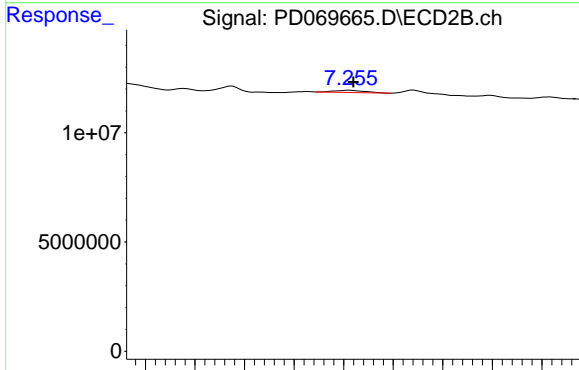
R.T.: 7.398 min
 Delta R.T.: 0.052 min
 Response: 752673
 Conc: N.D.



#18 Endrin aldehyde

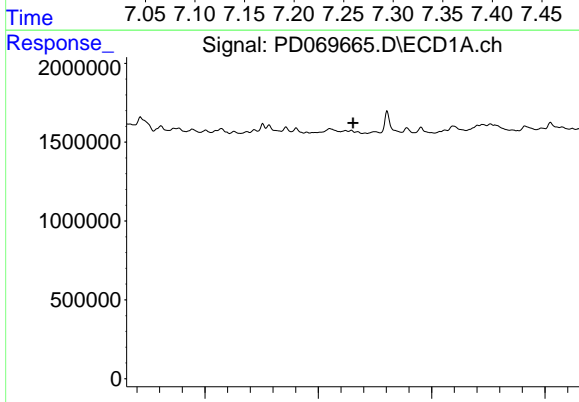
R.T.: 6.403 min
 Delta R.T.: -0.038 min
 Response: 352766
 Conc: 0.34 ng/ml

Instrument :
 ECD_D
 ClientSampleId :



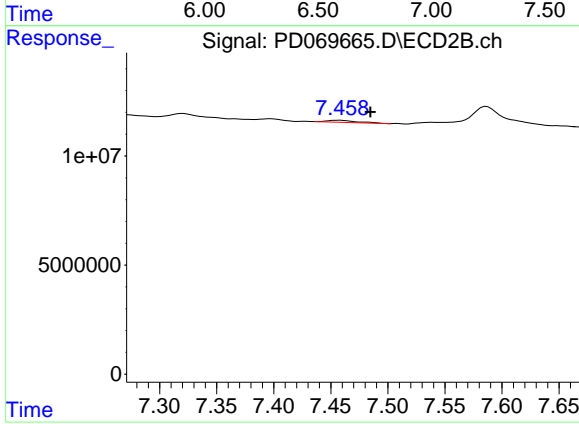
#18 Endrin aldehyde

R.T.: 7.256 min
 Delta R.T.: -0.004 min
 Response: 2172626
 Conc: 0.26 ng/ml



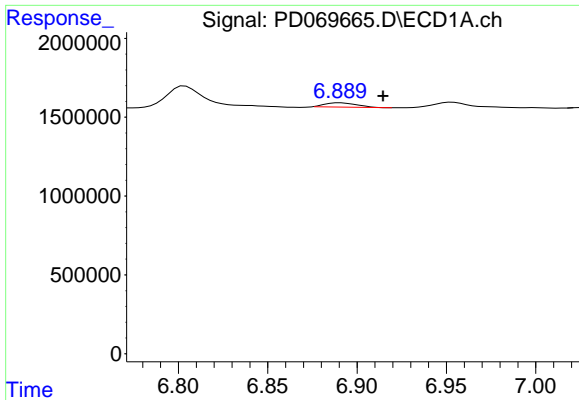
#19 Endosulfan Sulfate

R.T.: 0.000 min
 Exp R.T. : 6.653 min
 Response: 0
 Conc: N.D.



#19 Endosulfan Sulfate

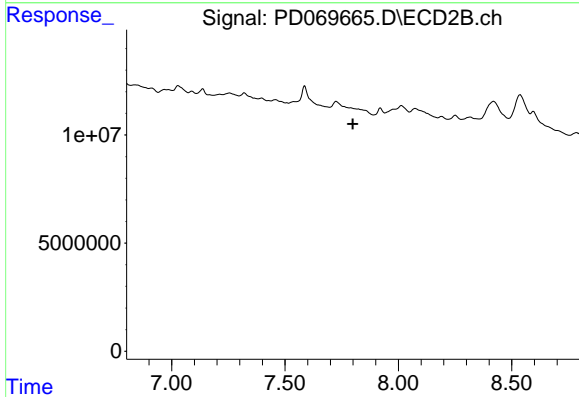
R.T.: 7.458 min
 Delta R.T.: -0.027 min
 Response: 1624539
 Conc: 0.17 ng/ml



#20 Methoxychlor

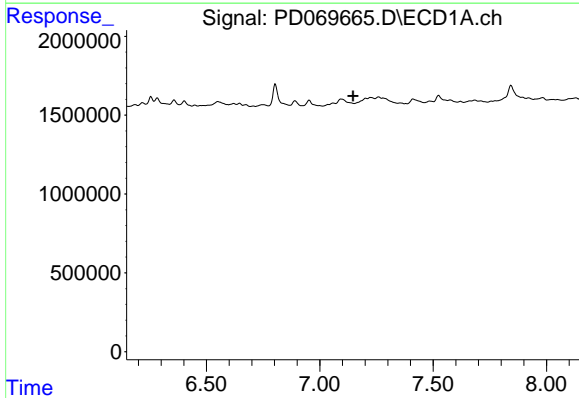
R.T.: 6.891 min
 Delta R.T.: -0.024 min
 Response: 333763
 Conc: 0.51 ng/ml

Instrument :
 ECD_D
 ClientSampleId :



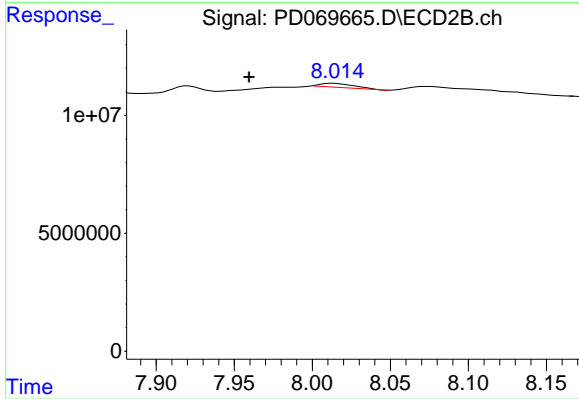
#20 Methoxychlor

R.T.: 0.000 min
 Exp R.T. : 7.799 min
 Response: 0
 Conc: N.D.



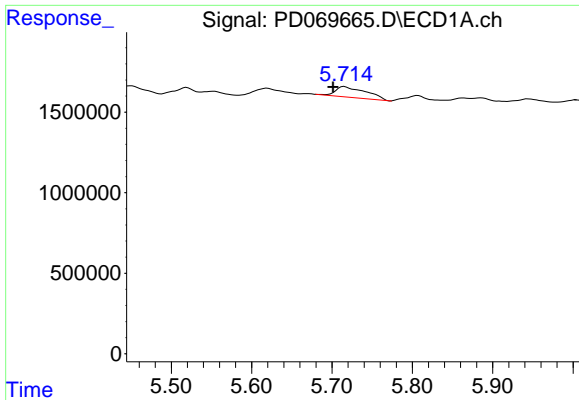
#21 Endrin ketone

R.T.: 0.000 min
 Exp R.T. : 7.147 min
 Response: 0
 Conc: N.D.



#21 Endrin ketone

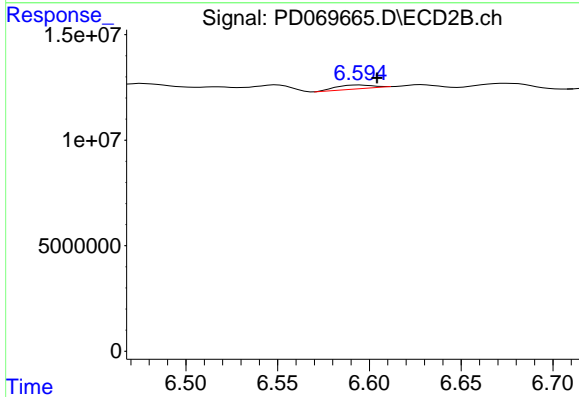
R.T.: 8.014 min
 Delta R.T.: 0.054 min
 Response: 2470998
 Conc: 0.26 ng/ml



#22 Toxaphene-1

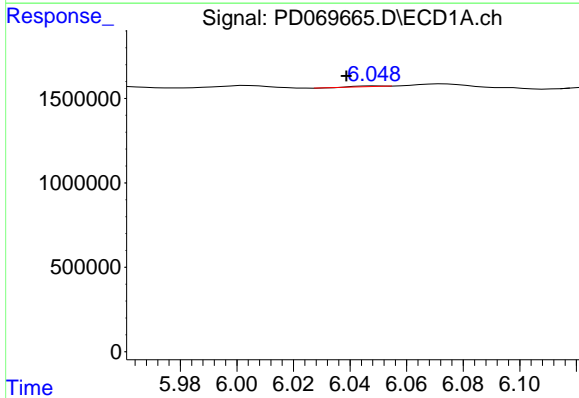
R.T.: 5.715 min
 Delta R.T.: 0.014 min
 Response: 1754643
 Conc: 223.03 ng/ml

Instrument :
 ECD_D
 ClientSampleId :



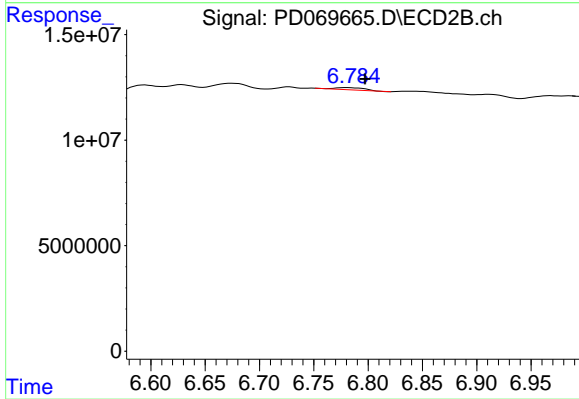
#22 Toxaphene-1

R.T.: 6.595 min
 Delta R.T.: -0.009 min
 Response: 2522828
 Conc: 28.07 ng/ml



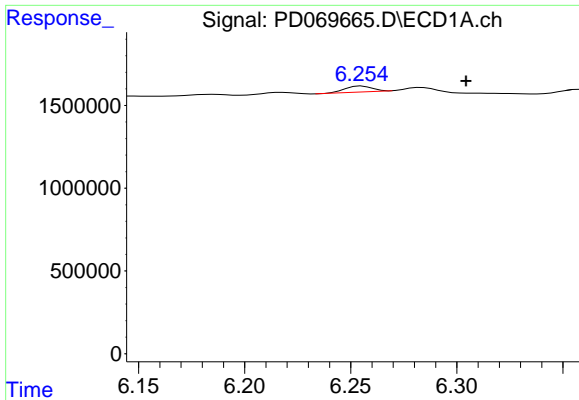
#23 Toxaphene-2

R.T.: 6.049 min
 Delta R.T.: 0.010 min
 Response: 22153
 Conc: 2.71 ng/ml



#23 Toxaphene-2

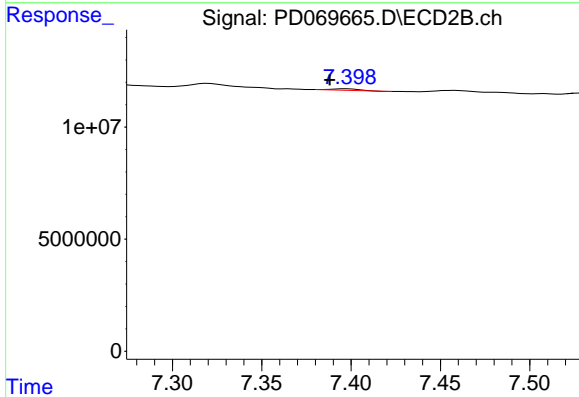
R.T.: 6.781 min
 Delta R.T.: -0.016 min
 Response: 1913790
 Conc: 19.00 ng/ml



#24 Toxaphene-3

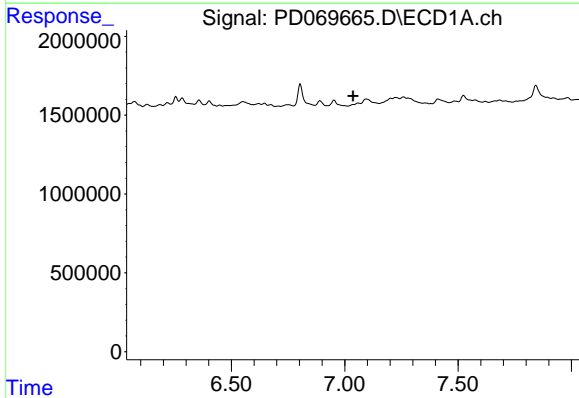
R.T.: 6.255 min
 Delta R.T.: -0.049 min
 Response: 321831
 Conc: 36.99 ng/ml

Instrument :
 ECD_D
 ClientSampleId :



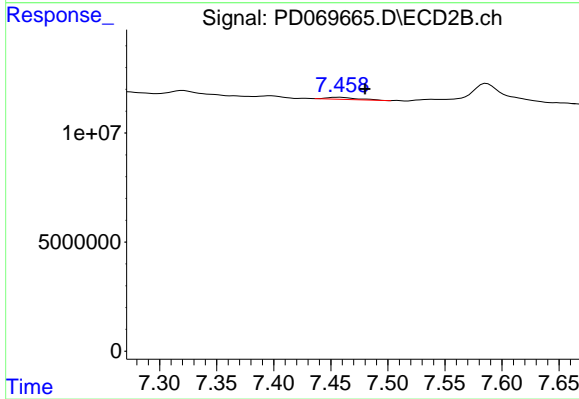
#24 Toxaphene-3

R.T.: 7.398 min
 Delta R.T.: 0.009 min
 Response: 752673
 Conc: 2.91 ng/ml



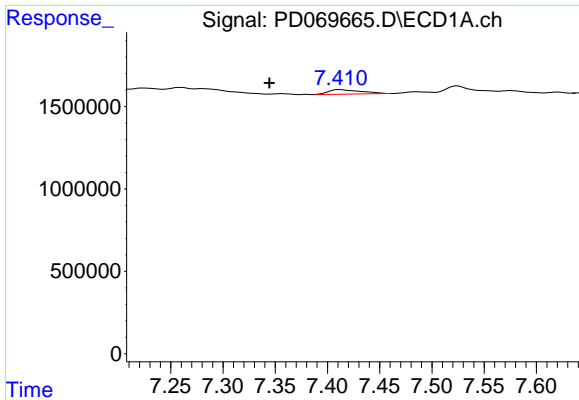
#25 Toxaphene-4

R.T.: 0.000 min
 Exp R.T. : 7.037 min
 Response: 0
 Conc: N.D.



#25 Toxaphene-4

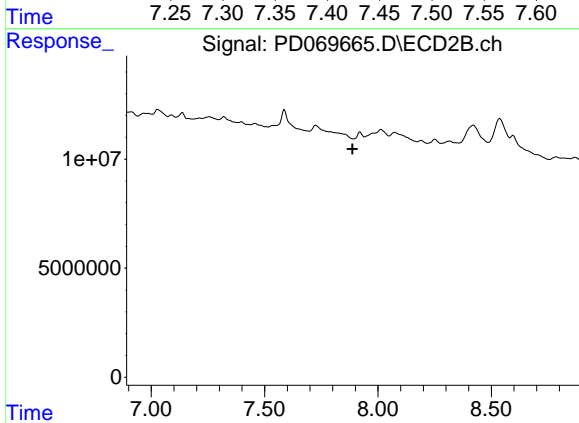
R.T.: 7.458 min
 Delta R.T.: -0.022 min
 Response: 1624539
 Conc: 8.09 ng/ml



#26 Toxaphene-5

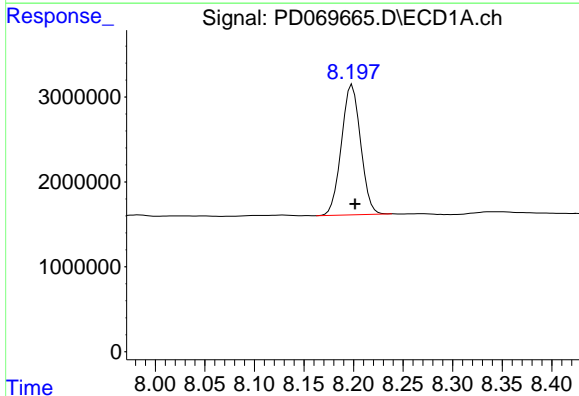
R.T.: 7.412 min
 Delta R.T.: 0.067 min
 Response: 589184
 Conc: 34.69 ng/ml

Instrument :
 ECD_D
 ClientSampleId :



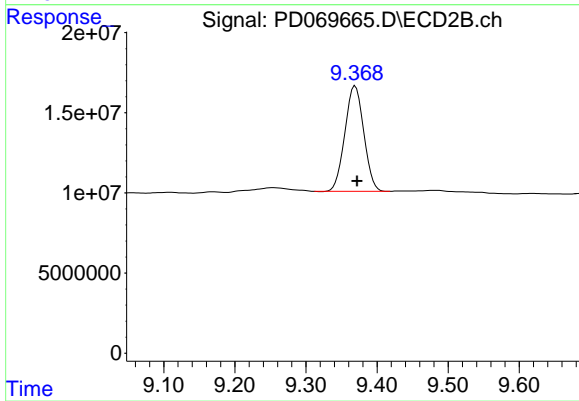
#26 Toxaphene-5

R.T.: 0.000 min
 Exp R.T. : 7.888 min
 Response: 0
 Conc: N.D.



#27 Decachlorobiphenyl

R.T.: 8.199 min
 Delta R.T.: -0.003 min
 Response: 20682331
 Conc: 16.67 ng/ml



#27 Decachlorobiphenyl

R.T.: 9.369 min
 Delta R.T.: -0.002 min
 Response: 121651673
 Conc: 16.66 ng/ml