

Data Path : Z:\pestpcbsrv\HPCHEM1\ECD_D\Data\PD051823\
 Data File : PD075584.D
 Signal(s) : Signal #1: ECD1A.ch Signal #2: ECD2B.ch
 Acq On : 18 May 2023 16:52
 Operator : AR\AJ
 Sample : TOXAPHENE309
 Misc :
 ALS Vial : 4 Sample Multiplier: 1

Integration File signal 1: autoint1.e
 Integration File signal 2: autoint2.e
 Quant Time: May 18 21:12:05 2023
 Quant Method : Z:\pestpcbsrv\HPCHEM1\ECD_D\Method\PD050323CLP.M
 Quant Title : GC Extractables
 QLast Update : Thu May 04 02:14:07 2023
 Response via : Initial Calibration
 Integrator: ChemStation

Volume Inj. : 1 µl
 Signal #1 Phase : ZB-MR2 Signal #2 Phase: ZB-MR2
 Signal #1 Info : 30M x 0.32mm x0.5 Signal #2 Info : 30M x 0.32mm x 0.25µm

Compound	RT#1	RT#2	Resp#1	Resp#2	ng/ml	ng/ml

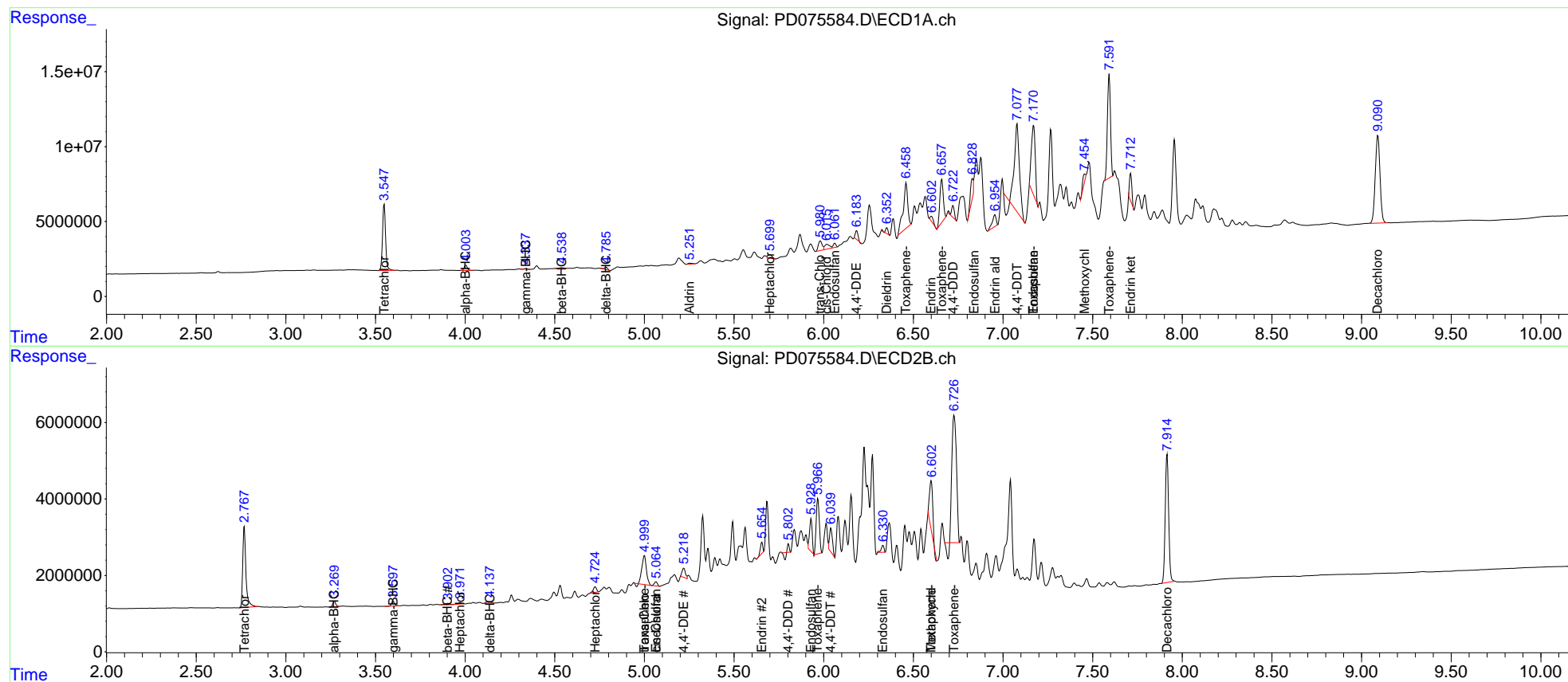
System Monitoring Compounds						
1) SA Tetrachlo...	3.548	2.768	52222606	26124726	22.896	24.769
2) SA Decachlor...	9.091	7.915	107.5E6	44544933	43.458	47.168
Target Compounds						
2) A alpha-BHC	4.004	3.271	4113112	1776808	1.070	1.147
3) MA gamma-BHC...	4.338	3.598	407328	1560892	0.113	1.062 #
4) MA Heptachlor	4.977f	3.973f	77344	445446	<MDL	0.305 #
5) MB Aldrin	5.253	4.231	930399	99806	0.255	<MDL #
6) B beta-BHC	4.539	3.904	810682	620715	0.494	0.852 #
7) B delta-BHC	4.787	4.138	2029639	835964	0.600	0.529
8) B Heptachlo...	5.701	4.726	4056353	1868612	1.197	1.340
9) A Endosulfan I	6.062	5.065	3068995	1335406	1.017	1.113
10) B trans-Chl...	5.981	5.000	9384000	12944154	2.864	9.486 #
11) B cis-Chlor...	6.018	5.065	6111923	1335406	1.793	0.957 #
12) B 4,4'-DDE	6.184	5.220	5994476	3118146	1.836	2.426 #
14) MA Endrin	6.600	5.655	4437593	2649810	1.535	2.179 #
15) B Endosulfa...	6.829	5.930	13132691	8899158	4.078	6.955 #
16) A 4,4'-DDD	6.722	5.803	8862668	146591	3.667	0.148 #
17) MA 4,4'-DDT	7.079	6.040	105.2E6	7141097	41.447	7.085 #
18) B Endrin al...	6.955	6.120	11717644	-2015688	4.953	N.D. #
19) B Endosulfa...	7.171	6.331	69923117	1930267	25.420	1.660 #
20) A Methoxychlor	7.455f	6.600	5484903	16061803	3.734	28.042 #
21) B Endrin ke...	7.712f	6.850	16848207	-3525085	5.558	N.D. #
22) Toxaphene-1	0.000	5.000	0	12944154	N.D.	1874.137
23) Toxaphene-2	6.460	5.716	53971844	-7967268	1808.767	N.D. #
24) Toxaphene-3	6.659	5.968	38009675	17660090	1801.930	2015.678
25) Toxaphene-4	7.171	6.600	69923117	16061803	1072.575	634.409 #
26) Toxaphene-5	7.592	6.727	81998420	56879697	1728.447	1566.157

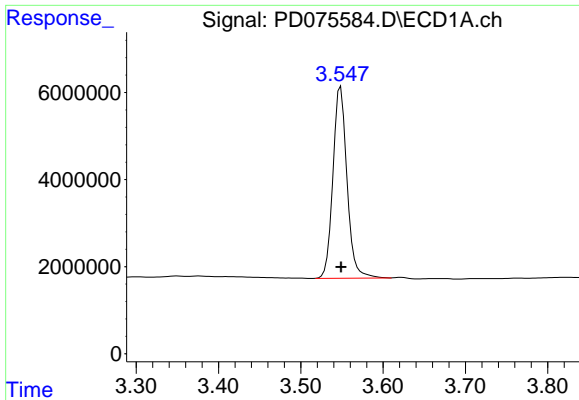
(f)=RT Delta > 1/2 Window (#)=Amounts differ by > 25% (m)=manual int.

Data Path : Z:\pestpcbsrv\HPCHEM1\ECD_D\Data\PD051823\
 Data File : PD075584.D
 Signal(s) : Signal #1: ECD1A.ch Signal #2: ECD2B.ch
 Acq On : 18 May 2023 16:52
 Operator : AR\AJ
 Sample : TOXAPHENE309
 Misc :
 ALS Vial : 4 Sample Multiplier: 1

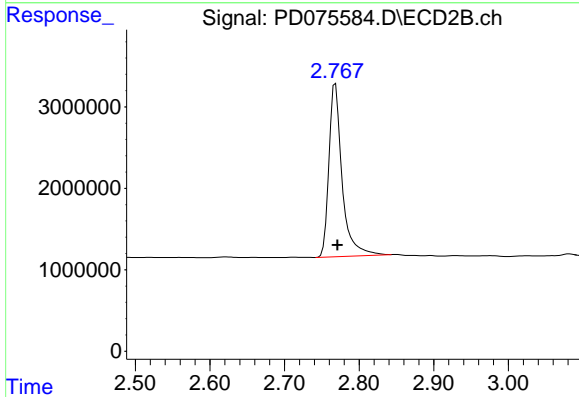
Integration File signal 1: autoint1.e
 Integration File signal 2: autoint2.e
 Quant Time: May 18 21:12:05 2023
 Quant Method : Z:\pestpcbsrv\HPCHEM1\ECD_D\Method\PD050323CLP.M
 Quant Title : GC Extractables
 QLast Update : Thu May 04 02:14:07 2023
 Response via : Initial Calibration
 Integrator: ChemStation

Volume Inj. : 1 µl
 Signal #1 Phase : ZB-MR1 Signal #2 Phase: ZB-MR2
 Signal #1 Info : 30M x 0.32mm x0.5 Signal #2 Info : 30M x 0.32mm x 0.25µm

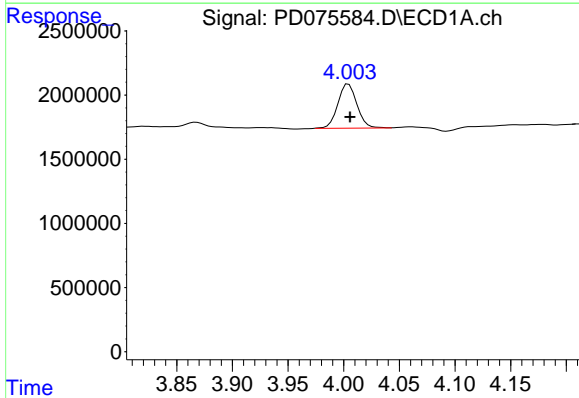




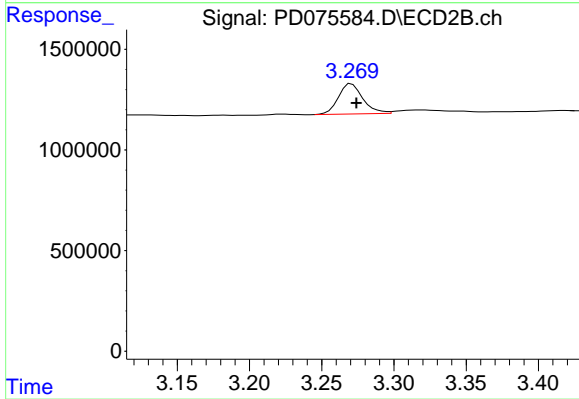
#1 Tetrachloro-m-xylene
 R.T.: 3.548 min
 Delta R.T.: 0.000 min
 Response: 52222606
 Conc: 22.90 ng/ml



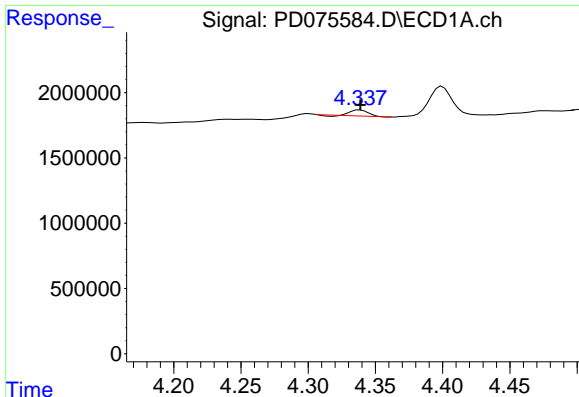
#1 Tetrachloro-m-xylene
 R.T.: 2.768 min
 Delta R.T.: -0.003 min
 Response: 26124726
 Conc: 24.77 ng/ml



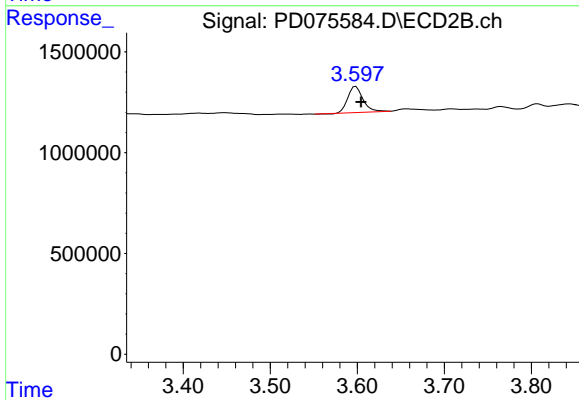
#2 alpha-BHC
 R.T.: 4.004 min
 Delta R.T.: -0.001 min
 Response: 4113112
 Conc: 1.07 ng/ml



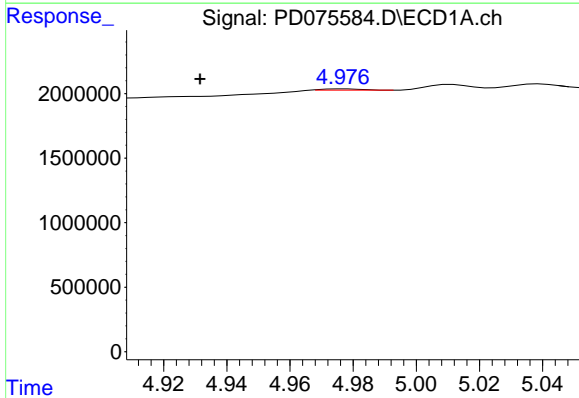
#2 alpha-BHC
 R.T.: 3.271 min
 Delta R.T.: -0.003 min
 Response: 1776808
 Conc: 1.15 ng/ml



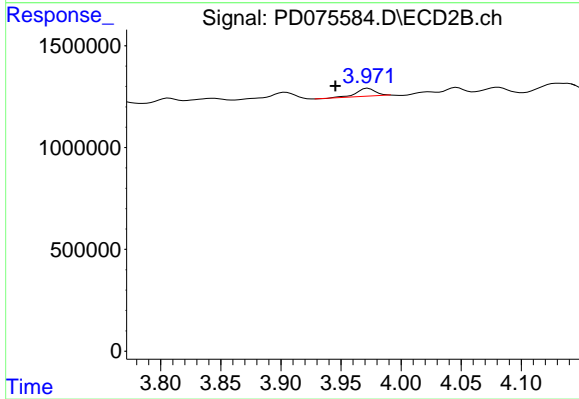
#3 gamma-BHC (Lindane)
R.T.: 4.338 min
Delta R.T.: 0.000 min
Response: 407328
Conc: 0.11 ng/ml



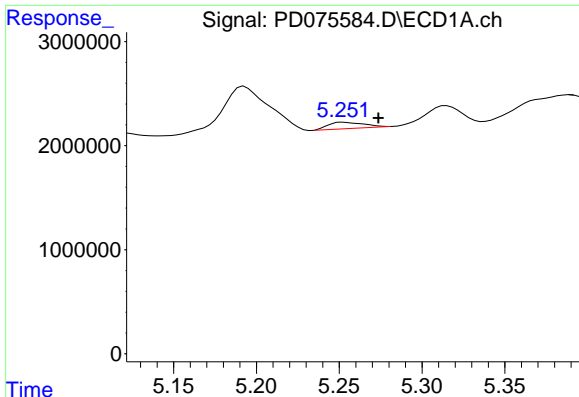
#3 gamma-BHC (Lindane)
R.T.: 3.598 min
Delta R.T.: -0.006 min
Response: 1560892
Conc: 1.06 ng/ml



#4 Heptachlor
R.T.: 4.977 min
Delta R.T.: 0.046 min
Response: 77344
Conc: N.D.

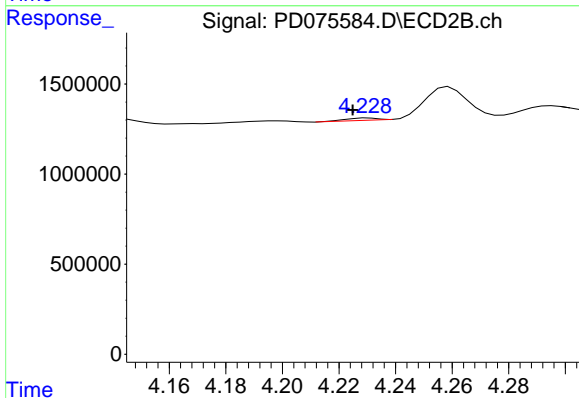


#4 Heptachlor
R.T.: 3.973 min
Delta R.T.: 0.027 min
Response: 445446
Conc: 0.30 ng/ml



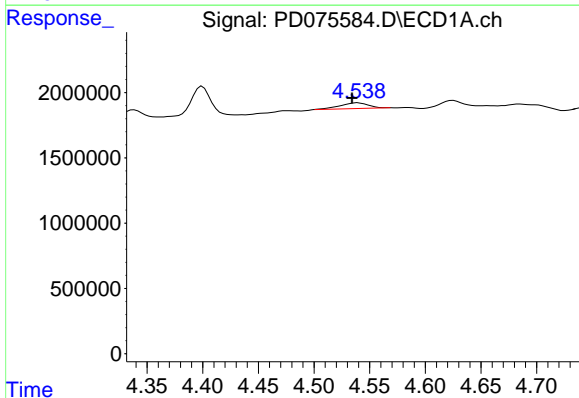
#5 Aldrin

R.T.: 5.253 min
 Delta R.T.: -0.021 min
 Response: 930399
 Conc: 0.26 ng/ml



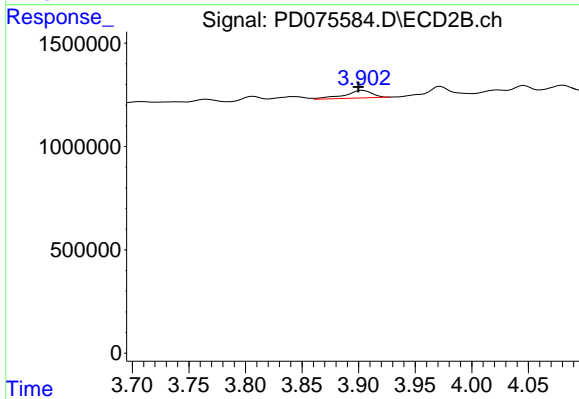
#5 Aldrin

R.T.: 4.231 min
 Delta R.T.: 0.006 min
 Response: 99806
 Conc: N.D.



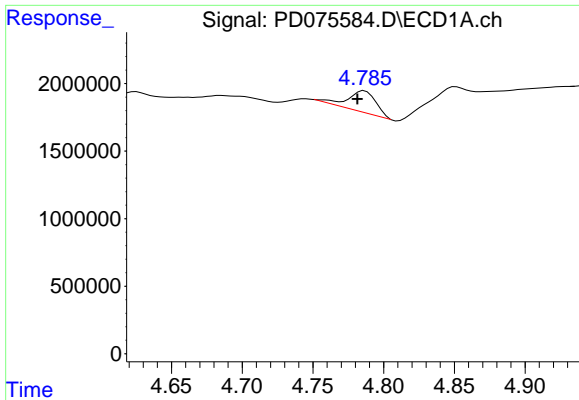
#6 beta-BHC

R.T.: 4.539 min
 Delta R.T.: 0.005 min
 Response: 810682
 Conc: 0.49 ng/ml



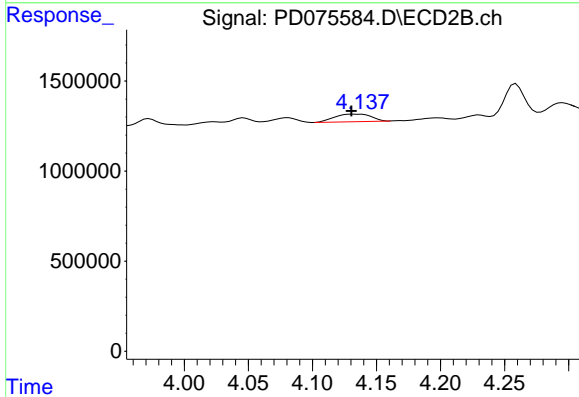
#6 beta-BHC

R.T.: 3.904 min
 Delta R.T.: 0.004 min
 Response: 620715
 Conc: 0.85 ng/ml



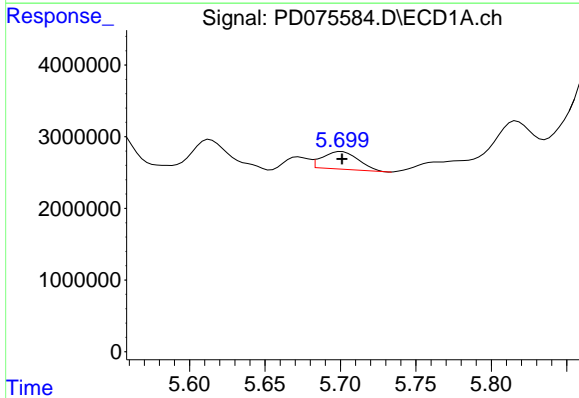
#7 delta-BHC

R.T.: 4.787 min
Delta R.T.: 0.005 min
Response: 2029639
Conc: 0.60 ng/ml



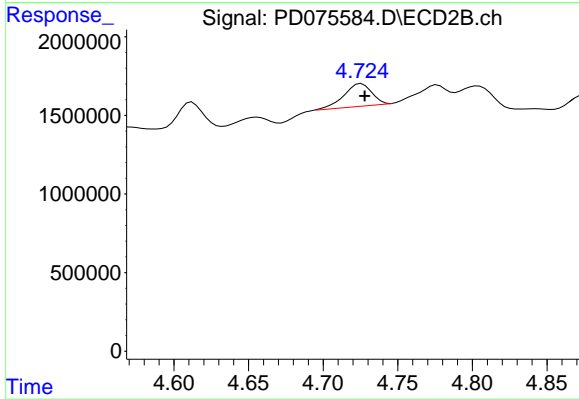
#7 delta-BHC

R.T.: 4.138 min
Delta R.T.: 0.007 min
Response: 835964
Conc: 0.53 ng/ml



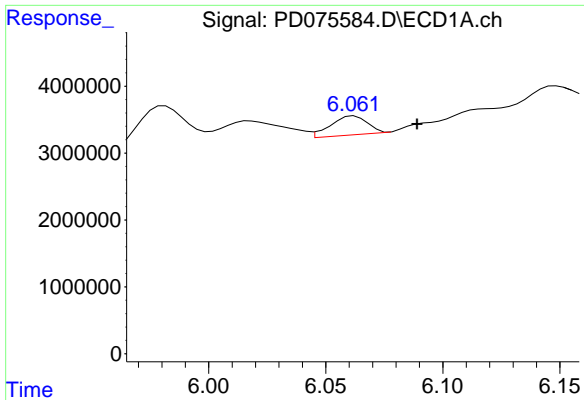
#8 Heptachlor epoxide

R.T.: 5.701 min
Delta R.T.: 0.000 min
Response: 4056353
Conc: 1.20 ng/ml



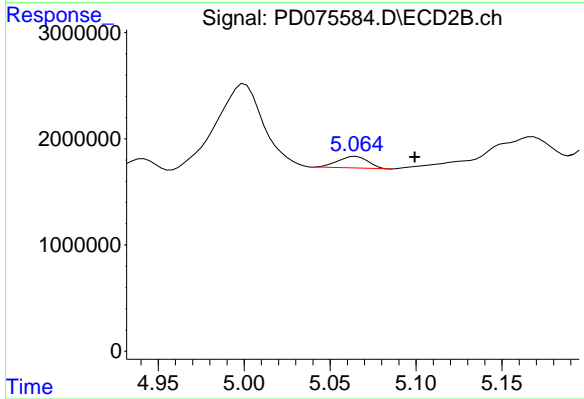
#8 Heptachlor epoxide

R.T.: 4.726 min
Delta R.T.: -0.002 min
Response: 1868612
Conc: 1.34 ng/ml



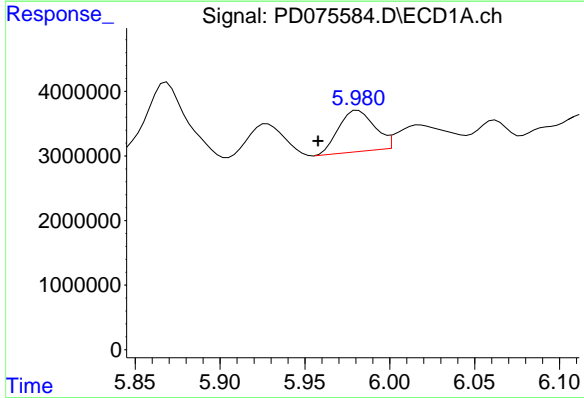
#9 Endosulfan I

R.T.: 6.062 min
Delta R.T.: -0.027 min
Response: 3068995
Conc: 1.02 ng/ml



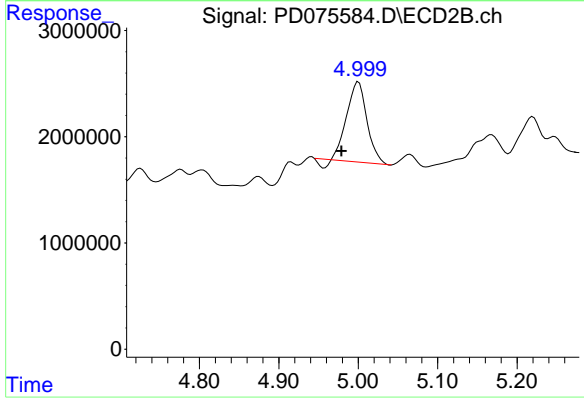
#9 Endosulfan I

R.T.: 5.065 min
Delta R.T.: -0.034 min
Response: 1335406
Conc: 1.11 ng/ml



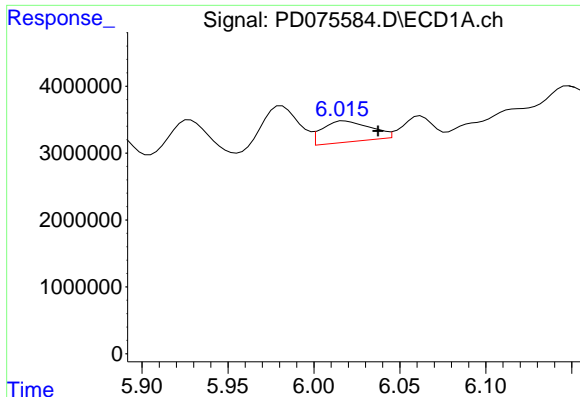
#10 trans-Chlordane

R.T.: 5.981 min
Delta R.T.: 0.024 min
Response: 9384000
Conc: 2.86 ng/ml



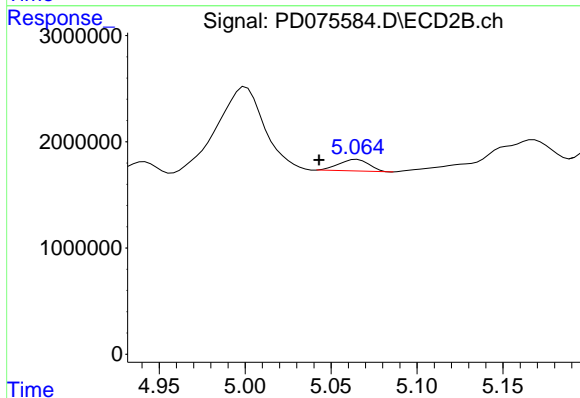
#10 trans-Chlordane

R.T.: 5.000 min
Delta R.T.: 0.022 min
Response: 12944154
Conc: 9.49 ng/ml



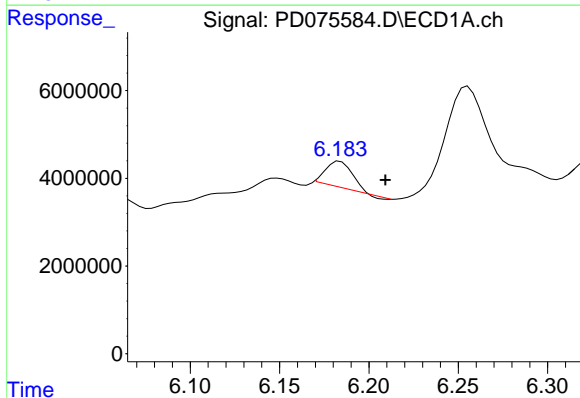
#11 cis-Chlordane

R.T.: 6.018 min
 Delta R.T.: -0.019 min
 Response: 6111923
 Conc: 1.79 ng/ml



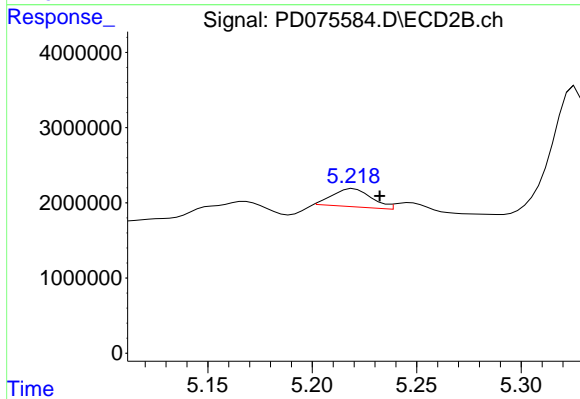
#11 cis-Chlordane

R.T.: 5.065 min
 Delta R.T.: 0.022 min
 Response: 1335406
 Conc: 0.96 ng/ml



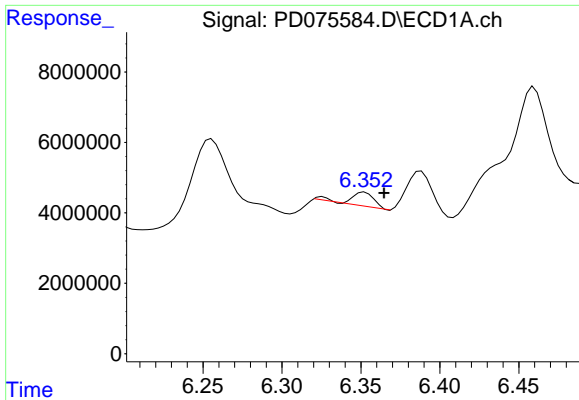
#12 4,4'-DDE

R.T.: 6.184 min
 Delta R.T.: -0.025 min
 Response: 5994476
 Conc: 1.84 ng/ml

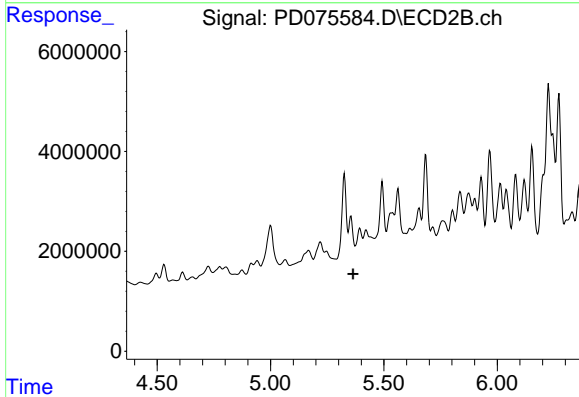


#12 4,4'-DDE

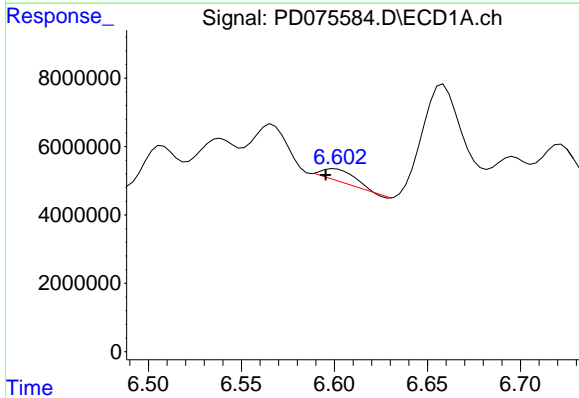
R.T.: 5.220 min
 Delta R.T.: -0.012 min
 Response: 3118146
 Conc: 2.43 ng/ml



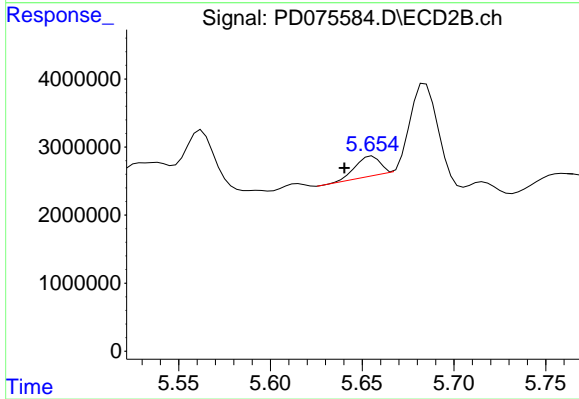
#13 Dieldrin
 R.T.: 6.352 min
 Delta R.T.: -0.012 min
 Response: 3870465
 Conc: 1.13 ng/ml



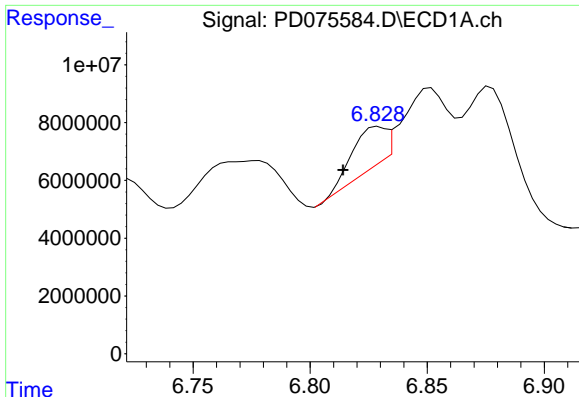
#13 Dieldrin
 R.T.: 5.355 min
 Delta R.T.: -0.010 min
 Response: -2498682
 Conc: N.D.



#14 Endrin
 R.T.: 6.600 min
 Delta R.T.: 0.005 min
 Response: 4437593
 Conc: 1.53 ng/ml

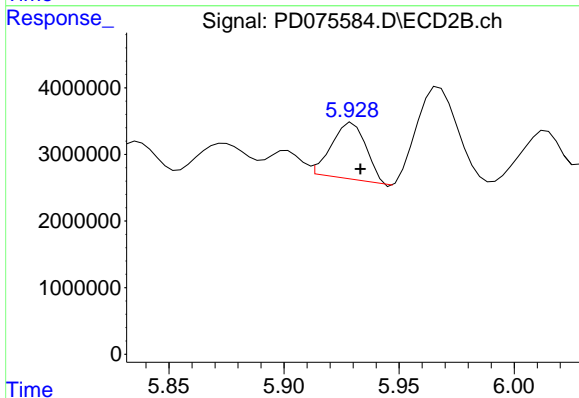


#14 Endrin
 R.T.: 5.655 min
 Delta R.T.: 0.015 min
 Response: 2649810
 Conc: 2.18 ng/ml



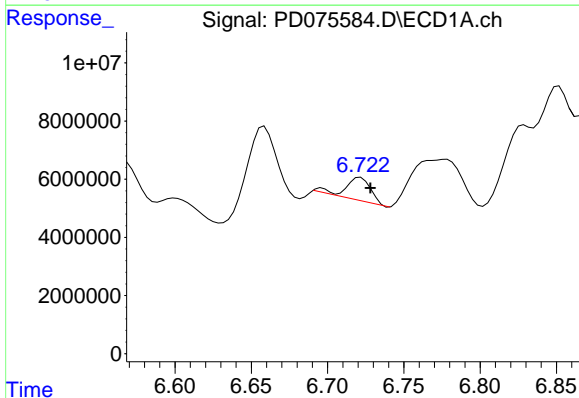
#15 Endosulfan II

R.T.: 6.829 min
 Delta R.T.: 0.015 min
 Response: 13132691
 Conc: 4.08 ng/ml



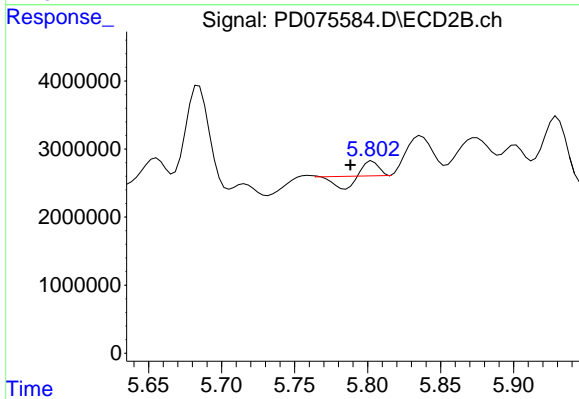
#15 Endosulfan II

R.T.: 5.930 min
 Delta R.T.: -0.004 min
 Response: 8899158
 Conc: 6.96 ng/ml



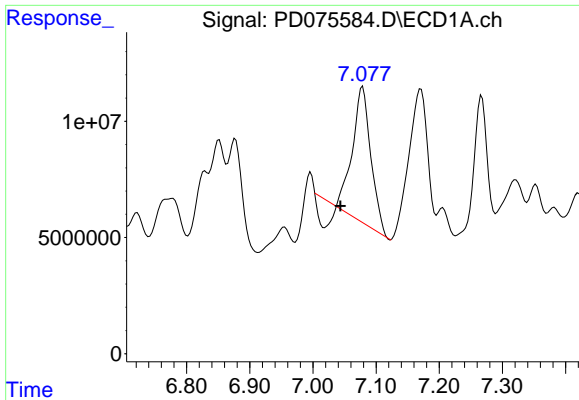
#16 4,4'-DDD

R.T.: 6.722 min
 Delta R.T.: -0.007 min
 Response: 8862668
 Conc: 3.67 ng/ml



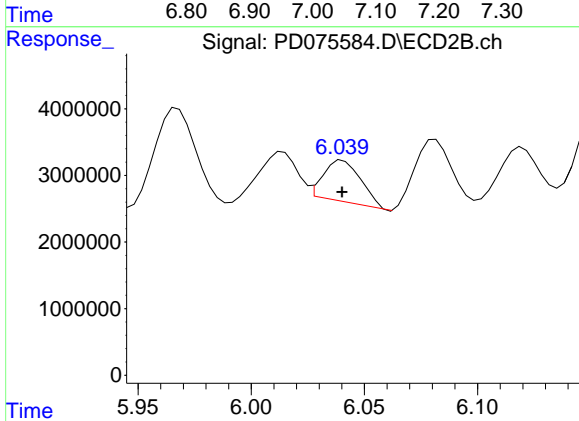
#16 4,4'-DDD

R.T.: 5.803 min
 Delta R.T.: 0.015 min
 Response: 146591
 Conc: 0.15 ng/ml



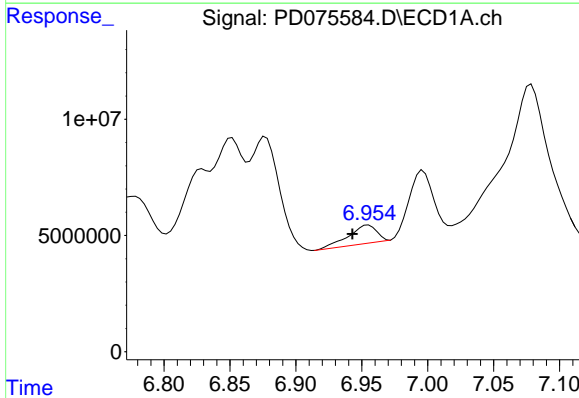
#17 4,4'-DDT

R.T.: 7.079 min
Delta R.T.: 0.035 min
Response: 105201574
Conc: 41.45 ng/ml



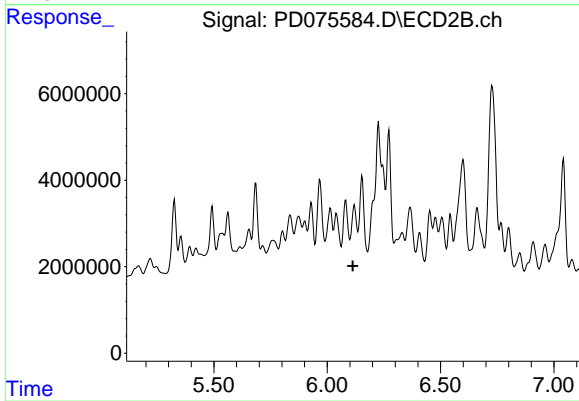
#17 4,4'-DDT

R.T.: 6.040 min
Delta R.T.: 0.000 min
Response: 7141097
Conc: 7.09 ng/ml



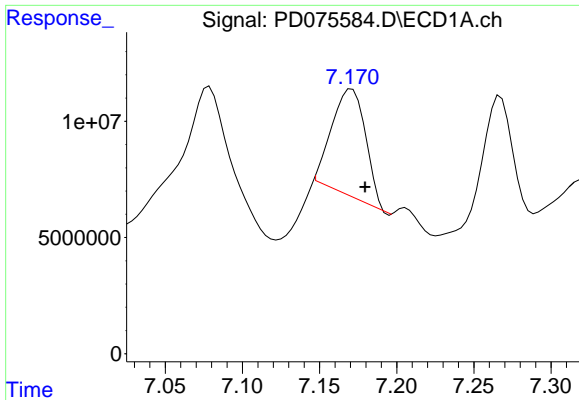
#18 Endrin aldehyde

R.T.: 6.955 min
Delta R.T.: 0.012 min
Response: 11717644
Conc: 4.95 ng/ml



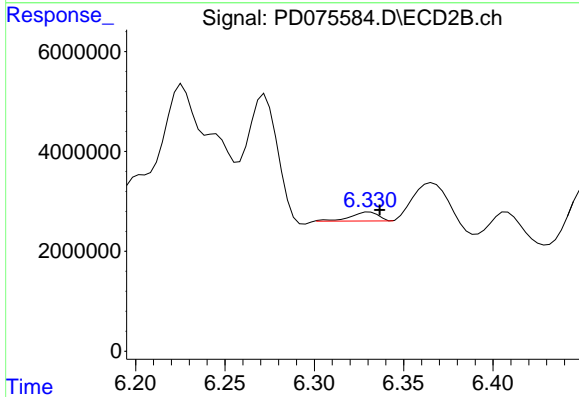
#18 Endrin aldehyde

R.T.: 6.120 min
Delta R.T.: 0.007 min
Response: -2015688
Conc: N.D.



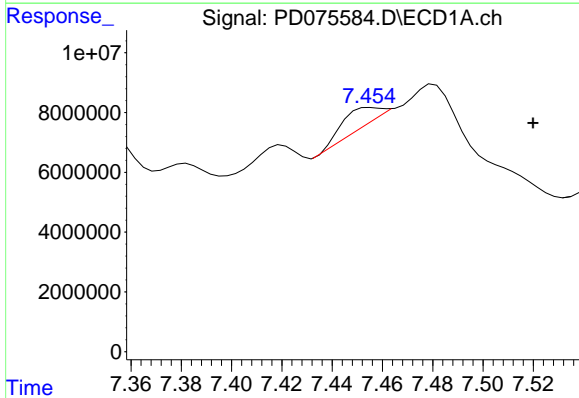
#19 Endosulfan Sulfate

R.T.: 7.171 min
Delta R.T.: -0.009 min
Response: 69923117
Conc: 25.42 ng/ml



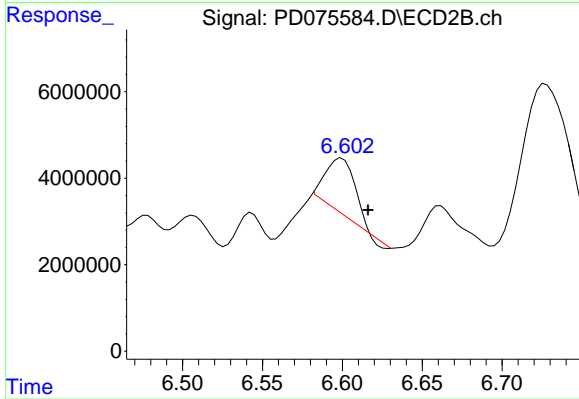
#19 Endosulfan Sulfate

R.T.: 6.331 min
Delta R.T.: -0.005 min
Response: 1930267
Conc: 1.66 ng/ml



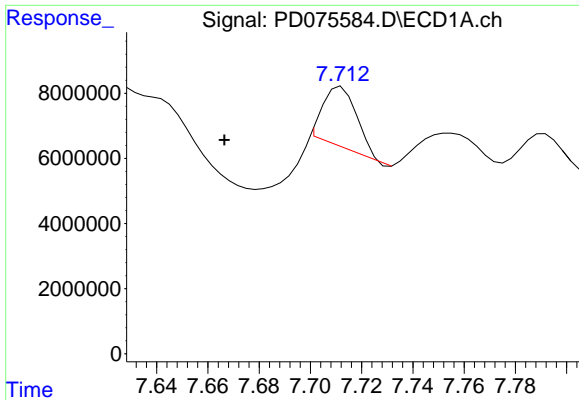
#20 Methoxychlor

R.T.: 7.455 min
Delta R.T.: -0.065 min
Response: 5484903
Conc: 3.73 ng/ml

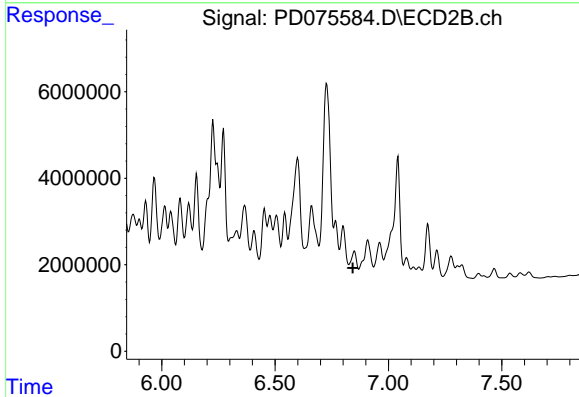


#20 Methoxychlor

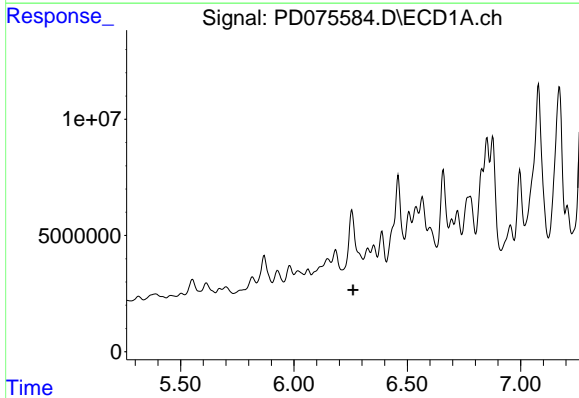
R.T.: 6.600 min
Delta R.T.: -0.017 min
Response: 16061803
Conc: 28.04 ng/ml



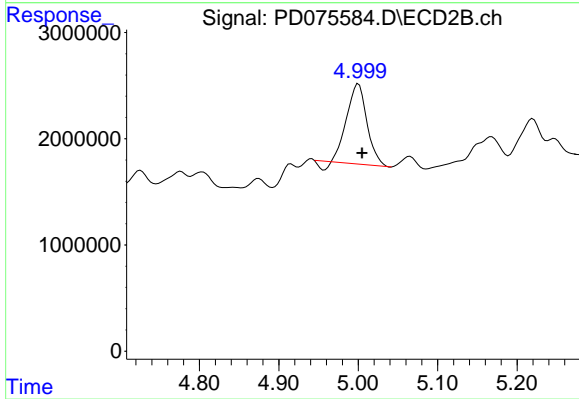
#21 Endrin ketone
 R.T.: 7.712 min
 Delta R.T.: 0.046 min
 Response: 16848207
 Conc: 5.56 ng/ml



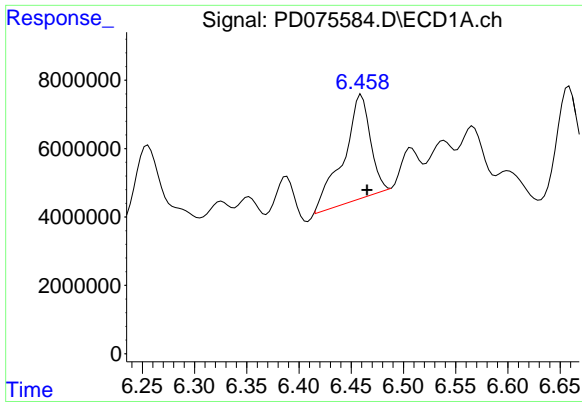
#21 Endrin ketone
 R.T.: 6.850 min
 Delta R.T.: 0.007 min
 Response: -3525085
 Conc: N.D.



#22 Toxaphene-1
 R.T.: 0.000 min
 Exp R.T. : 6.261 min
 Response: 0
 Conc: N.D.

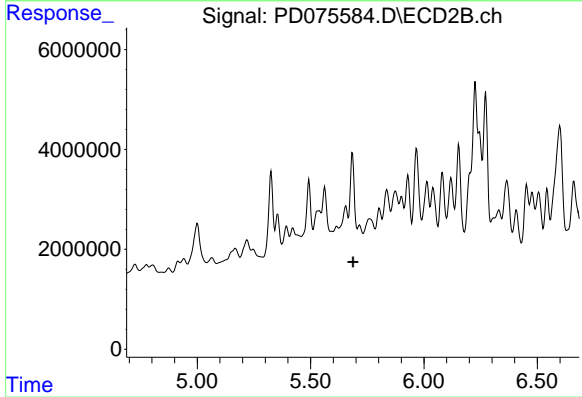


#22 Toxaphene-1
 R.T.: 5.000 min
 Delta R.T.: -0.004 min
 Response: 12944154
 Conc: 1874.14 ng/ml



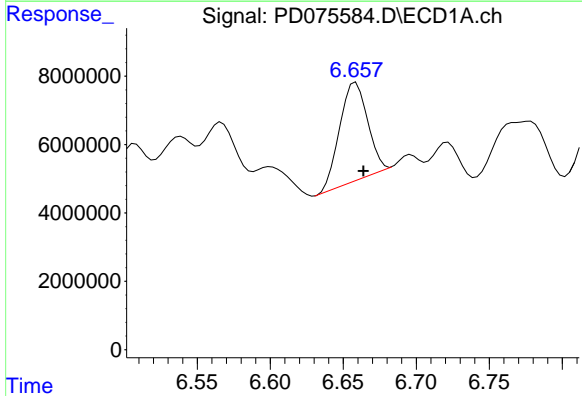
#23 Toxaphene-2

R.T.: 6.460 min
 Delta R.T.: -0.005 min
 Response: 53971844
 Conc: 1808.77 ng/ml



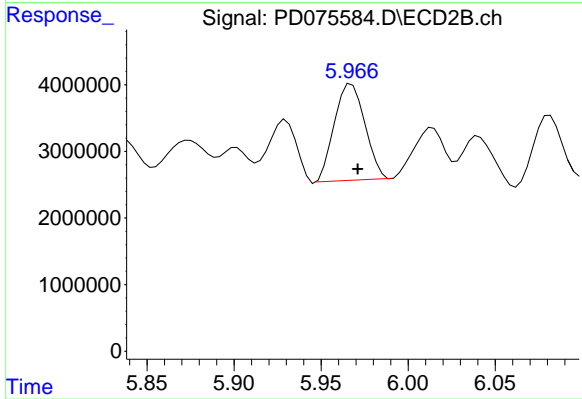
#23 Toxaphene-2

R.T.: 5.716 min
 Delta R.T.: 0.028 min
 Response: -7967268
 Conc: N.D.



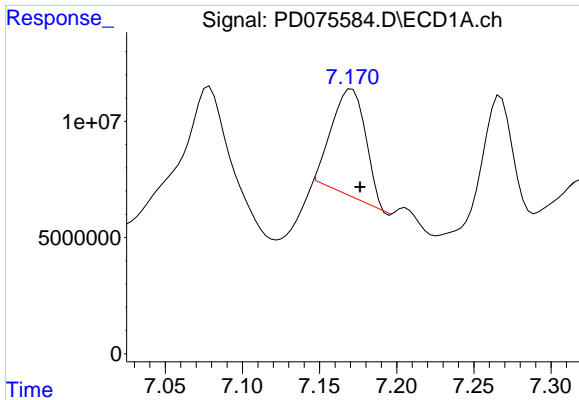
#24 Toxaphene-3

R.T.: 6.659 min
 Delta R.T.: -0.005 min
 Response: 38009675
 Conc: 1801.93 ng/ml



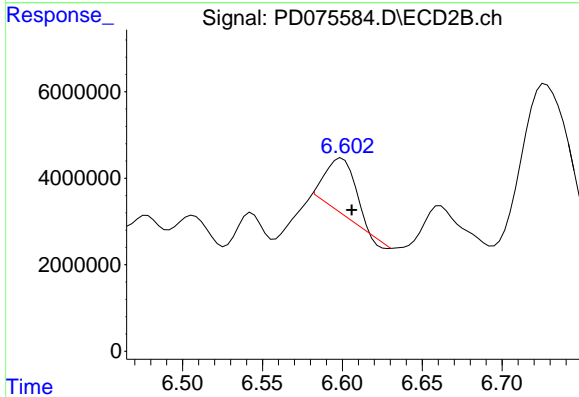
#24 Toxaphene-3

R.T.: 5.968 min
 Delta R.T.: -0.004 min
 Response: 17660090
 Conc: 2015.68 ng/ml



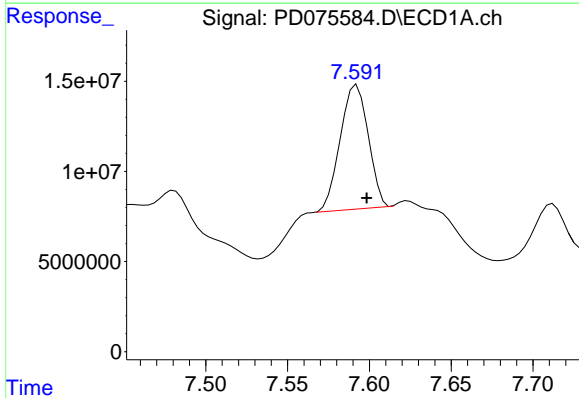
#25 Toxaphene-4

R.T.: 7.171 min
Delta R.T.: -0.005 min
Response: 69923117
Conc: 1072.57 ng/ml



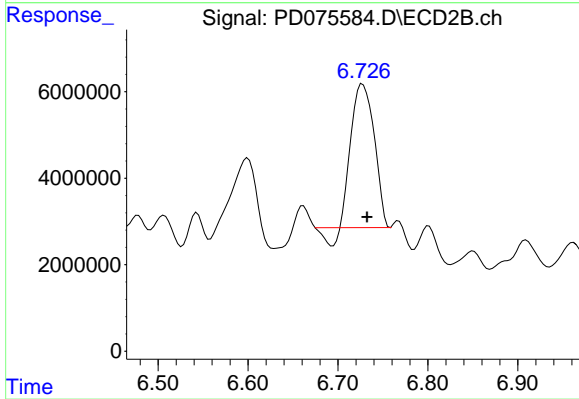
#25 Toxaphene-4

R.T.: 6.600 min
Delta R.T.: -0.006 min
Response: 16061803
Conc: 634.41 ng/ml



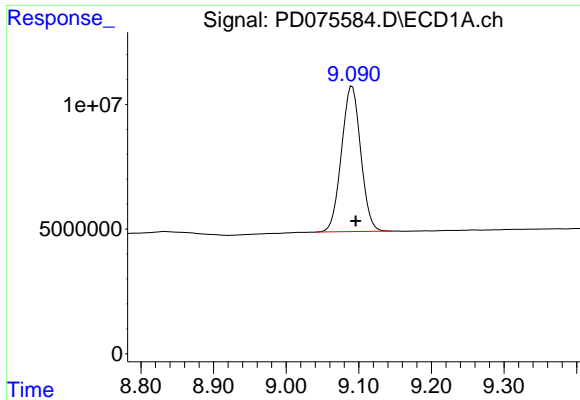
#26 Toxaphene-5

R.T.: 7.592 min
Delta R.T.: -0.006 min
Response: 81998420
Conc: 1728.45 ng/ml



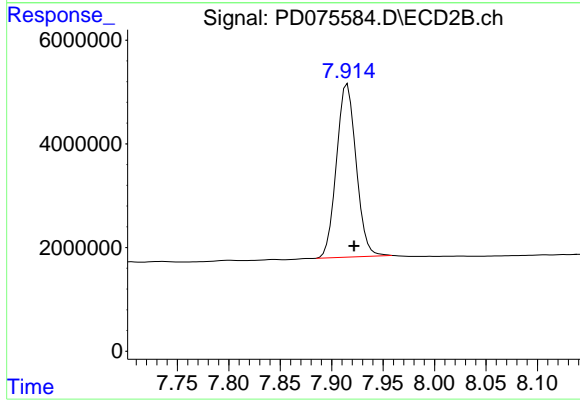
#26 Toxaphene-5

R.T.: 6.727 min
Delta R.T.: -0.005 min
Response: 56879697
Conc: 1566.16 ng/ml



#27 Decachlorobiphenyl

R.T.: 9.091 min
Delta R.T.: -0.005 min
Response: 107545239
Conc: 43.46 ng/ml



#27 Decachlorobiphenyl

R.T.: 7.915 min
Delta R.T.: -0.007 min
Response: 44544933
Conc: 47.17 ng/ml