

Data Path : Z:\pestpcbsrv\HPCHEM1\ECD_D\Data\PD051824\
 Data File : PD082859.D
 Signal(s) : Signal #1: ECD1A.ch Signal #2: ECD2B.ch
 Acq On : 16 May 2024 10:41
 Operator : AR\AJ
 Sample : PIBLK109
 Misc :
 ALS Vial : 2 Sample Multiplier: 1

Instrument :
 ECD_D
 ClientSampleId :
 PIBLK061

Integration File signal 1: autoint1.e
 Integration File signal 2: autoint2.e
 Quant Time: May 16 22:25:31 2024
 Quant Method : Z:\pestpcbsrv\HPCHEM1\ECD_D\Method\PD050924CLP-TCLP.M
 Quant Title : GC Extractables
 QLast Update : Sat May 11 02:23:31 2024
 Response via : Initial Calibration
 Integrator: ChemStation

Volume Inj. : 1 µl
 Signal #1 Phase : ZB-MR2 Signal #2 Phase: ZB-MR1
 Signal #1 Info : 30M x 0.32mm x0.2 Signal #2 Info : 30M x 0.32mm x 0.50µm

| Compound | RT#1 | RT#2 | Resp#1 | Resp#2 | ng/ml | ng/ml |
|-----------------------------|-------|-------|----------|----------|--------|--------|
| ----- | | | | | | |
| System Monitoring Compounds | | | | | | |
| 1) SA Tetrachlo... | 3.565 | 2.775 | 31213472 | 80800303 | 22.821 | 22.050 |
| 27) SA Decachlor... | 9.125 | 7.907 | 45551794 | 91014003 | 24.434 | 25.279 |

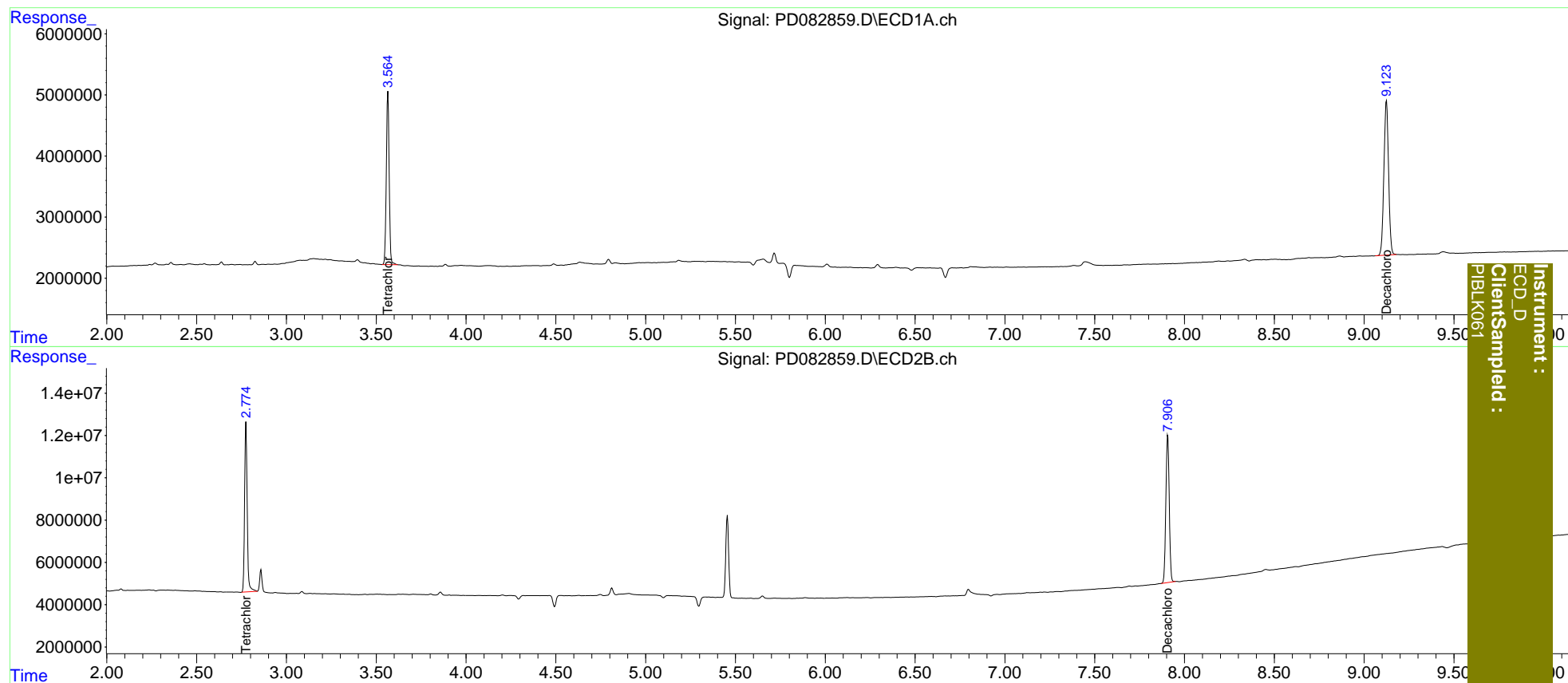
Target Compounds

 (f)=RT Delta > 1/2 Window (#)=Amounts differ by > 25% (m)=manual int.

Data Path : Z:\pestpcbsrv\HPCHEM1\ECD_D\Data\PD051824\
 Data File : PD082859.D
 Signal(s) : Signal #1: ECD1A.ch Signal #2: ECD2B.ch
 Acq On : 16 May 2024 10:41
 Operator : AR\AJ
 Sample : PIBLK109
 Misc :
 ALS Vial : 2 Sample Multiplier: 1

Integration File signal 1: autoint1.e
 Integration File signal 2: autoint2.e
 Quant Time: May 16 22:25:31 2024
 Quant Method : Z:\pestpcbsrv\HPCHEM1\ECD_D\Method\PD050924CLP-TCLP.M
 Quant Title : GC Extractables
 QLast Update : Sat May 11 02:23:31 2024
 Response via : Initial Calibration
 Integrator: ChemStation

Volume Inj. : 1 µl
 Signal #1 Phase : ZB-MR2 Signal #2 Phase: ZB-MR1
 Signal #1 Info : 30M x 0.32mm x0.2 Signal #2 Info : 30M x 0.32mm x 0.50µm



Instrument :
 ECD_D
 ClientSampleId :
 PIBLK061