

Data Path : Z:\pestpcbsrv\HPCHEM1\ECD_D\Data\PD051924\
 Data File : PD082869.D
 Signal(s) : Signal #1: ECD1A.ch Signal #2: ECD2B.ch
 Acq On : 16 May 2024 16:56
 Operator : AR\AJ
 Sample : TOXAPH501
 Misc :
 ALS Vial : 8 Sample Multiplier: 1

Instrument :
 ECD_D
 ClientSampleId :
 TOXAPH5062

Integration File signal 1: autoint1.e
 Integration File signal 2: autoint2.e
 Quant Time: May 16 17:54:40 2024
 Quant Method : Z:\pestpcbsrv\HPCHEM1\ECD_D\Method\PD051924CLP.M
 Quant Title : GC Extractables
 QLast Update : Thu May 16 17:52:16 2024
 Response via : Initial Calibration
 Integrator: ChemStation

Volume Inj. : 1 µl
 Signal #1 Phase : ZB-MR1 Signal #2 Phase: ZB-MR2
 Signal #1 Info : 30M x 0.32mm x0.5 Signal #2 Info : 30M x 0.32mm x 0.25µm

Compound	RT#1	RT#2	Resp#1	Resp#2	ng/ml	ng/ml

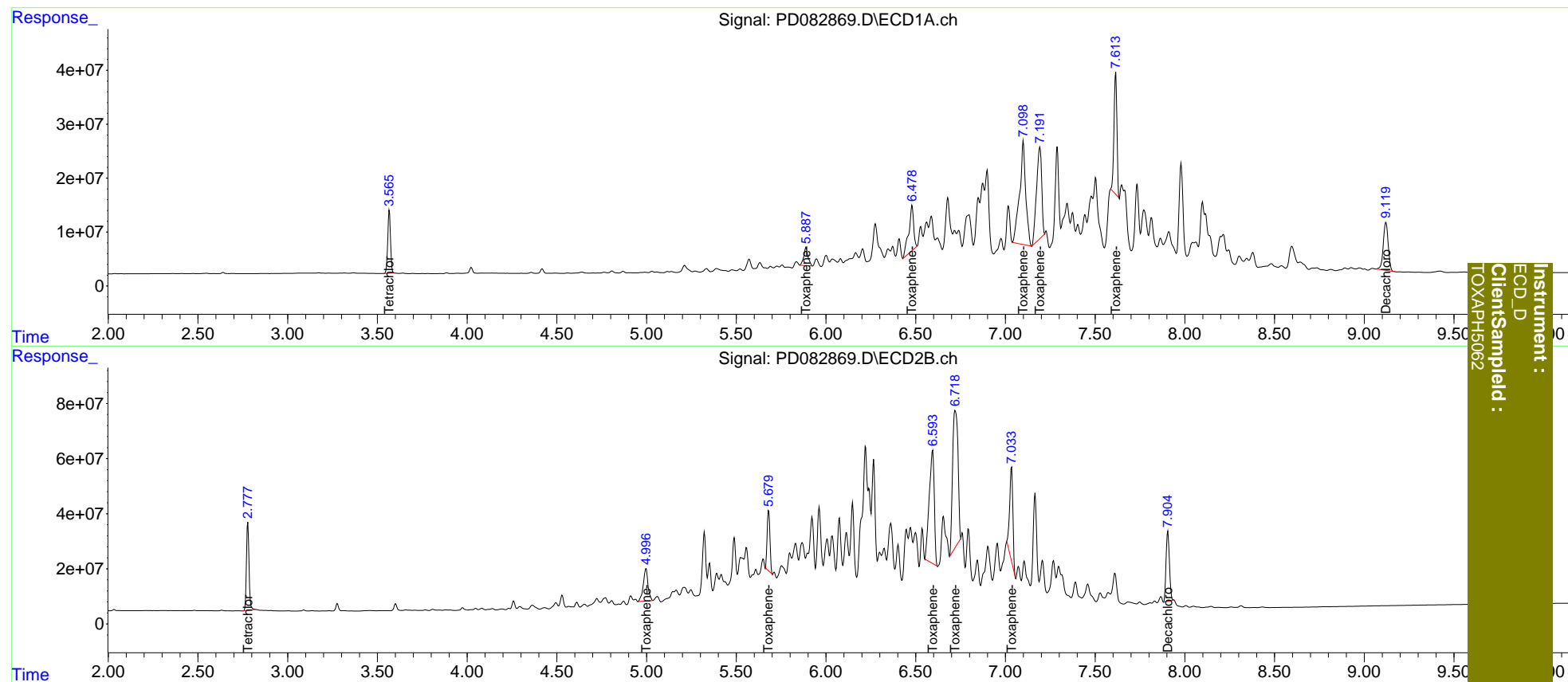
System Monitoring Compounds						
1) SA Tetrachlo...	3.566	2.778	124.9E6	320.0E6	79.942	78.937
27) SA Decachlor...	9.121	7.905	169.7E6	329.8E6	156.662	158.314
Target Compounds						
22) Toxaphene-1	5.889	4.997	55867344	215.0E6	8154.695	8099.244
23) Toxaphene-2	6.480	5.680	157.6E6	235.7E6	8112.801	8135.100
24) Toxaphene-3	7.100	6.594	457.0E6	806.1E6	8442.574	8266.505
25) Toxaphene-4	7.192	6.720	339.9E6	1038.0E6	8405.586	8043.340
26) Toxaphene-5	7.615	7.034	255.6E6	411.2E6	8526.468	8166.251

(f)=RT Delta > 1/2 Window (#)=Amounts differ by > 25% (m)=manual int.

Data Path : Z:\pestpcbsrv\HPCHEM1\ECD_D\Data\PD051924\
 Data File : PD082869.D
 Signal(s) : Signal #1: ECD1A.ch Signal #2: ECD2B.ch
 Acq On : 16 May 2024 16:56
 Operator : AR\AJ
 Sample : TOXAPH501
 Misc :
 ALS Vial : 8 Sample Multiplier: 1

Integration File signal 1: autoint1.e
 Integration File signal 2: autoint2.e
 Quant Time: May 16 17:54:40 2024
 Quant Method : Z:\pestpcbsrv\HPCHEM1\ECD_D\Method\PD051924CLP.M
 Quant Title : GC Extractables
 QLast Update : Thu May 16 17:52:16 2024
 Response via : Initial Calibration
 Integrator: ChemStation

Volume Inj. : 1 µl
 Signal #1 Phase : ZB-MR1 Signal #2 Phase: ZB-MR2
 Signal #1 Info : 30M x 0.32mm x0.5 Signal #2 Info : 30M x 0.32mm x 0.25µm



Instrument :
 ECD_D
 ClientSampled :
 TOXAPH5062