

Data Path : Z:\pestpcbsrv\HPCHEM1\ECD_D\Data\PD052119\
 Data File : PD053319.D
 Signal(s) : Signal #1: ECD1A.CH Signal #2: ECD2B.CH
 Acq On : 22 May 2019 4:37
 Operator : SM\AJ
 Sample : INDB301
 Misc :
 ALS Vial : 14 Sample Multiplier: 1

Instrument :
 ECD_D
 ClientSampleId :
 INDB301

Integration File signal 1: autoint1.e
 Integration File signal 2: autoint2.e
 Quant Time: May 22 05:44:47 2019
 Quant Method : Z:\pestpcbsrv\HPCHEM1\ECD_D\Method\PD052119CLP.M
 Quant Title : GC Extractables
 QLast Update : Wed May 22 05:26:30 2019
 Response via : Initial Calibration
 Integrator: ChemStation 6890 Scale Mode: Large solvent peaks clipped

Volume Inj. : 1 µl
 Signal #1 Phase : ZB-MR2 Signal #2 Phase: ZB-MR1
 Signal #1 Info : 30M x 0.32mm x0.2 Signal #2 Info : 30M x 0.32mm x 0.50µm

Compound	RT#1	RT#2	Resp#1	Resp#2	ng/ml	ng/ml

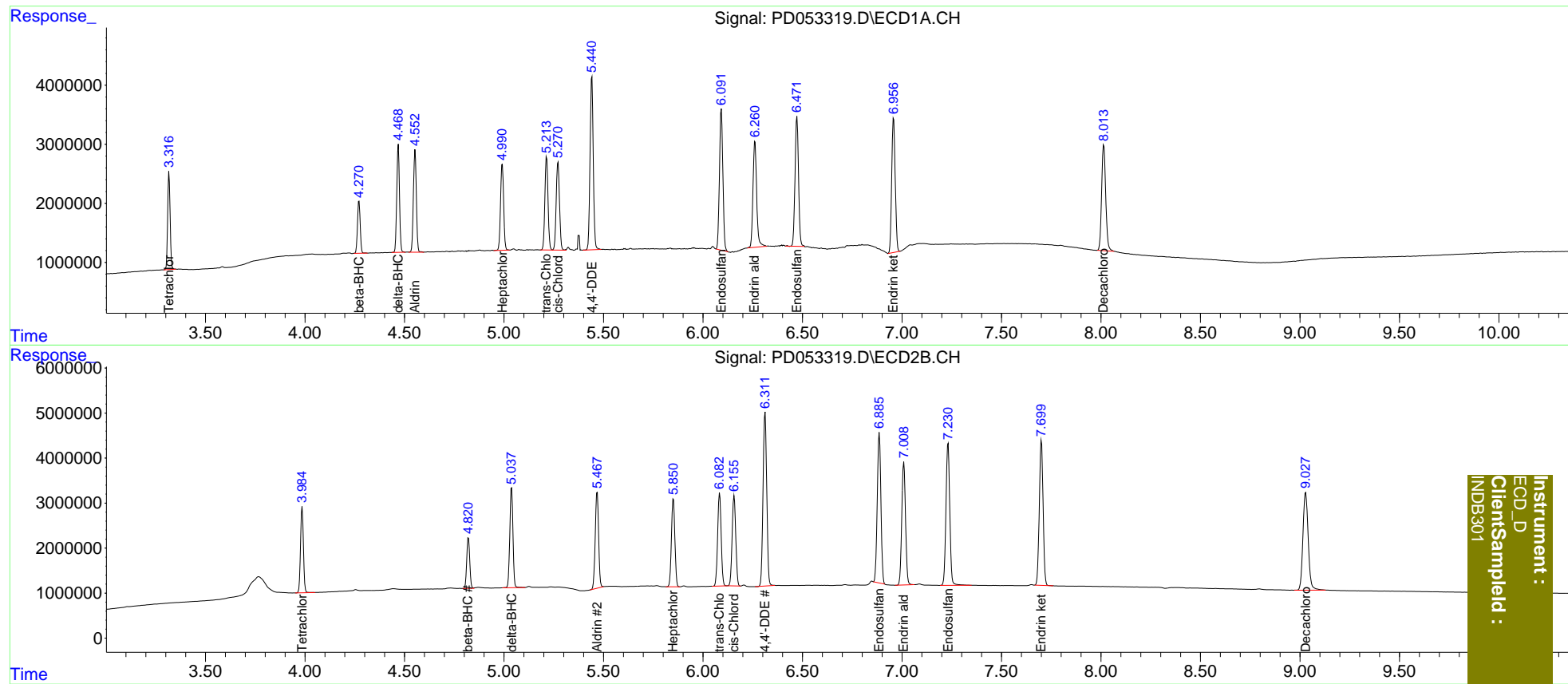
System Monitoring Compounds						
1) SA Tetrachlo...	3.317	3.986	14343915	19305723	20.000	20.000
27) SA Decachlor...	8.014	9.029	25507446	40061848	40.000	40.000
Target Compounds						
5) MB Aldrin	4.553	5.468	17906847	25163482	20.000	20.000
6) B beta-BHC	4.272	4.821	8383415	11939353	20.000	20.000
7) B delta-BHC	4.469	5.038	17438312	24271428	20.000	20.000
8) B Heptachlo...	4.992	5.851	15936571	23384337	20.000	20.000
10) B trans-Chl...	5.214	6.084	17275175	25383135	20.000	20.000
11) B cis-Chlor...	5.272	6.157	17151842	25133905	20.000	20.000
12) B 4,4'-DDE	5.442	6.312	32984287	49396451	40.000	40.000
15) B Endosulfa...	6.092	6.886	28568525	42149774	40.000	40.000
18) B Endrin al...	6.261	7.010	23188738	35664031	40.000	40.000
19) B Endosulfa...	6.472	7.232	26668161	42002021	40.000	40.000
21) B Endrin ke...	6.958	7.701	27746378	42616371	40.000	40.000

(f)=RT Delta > 1/2 Window (#)=Amounts differ by > 25% (m)=manual int.

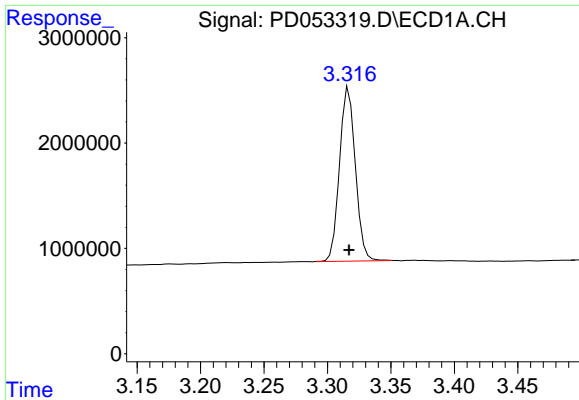
Data Path : Z:\pestpcbsrv\HPCHEM1\ECD_D\Data\PD052119\
 Data File : PD053319.D
 Signal(s) : Signal #1: ECD1A.CH Signal #2: ECD2B.CH
 Acq On : 22 May 2019 4:37
 Operator : SM\AJ
 Sample : INDB301
 Misc :
 ALS Vial : 14 Sample Multiplier: 1

Integration File signal 1: autoint1.e
 Integration File signal 2: autoint2.e
 Quant Time: May 22 05:44:47 2019
 Quant Method : Z:\pestpcbsrv\HPCHEM1\ECD_D\Method\PD052119CLP.M
 Quant Title : GC Extractables
 QLast Update : Wed May 22 05:26:30 2019
 Response via : Initial Calibration
 Integrator: ChemStation 6890 Scale Mode: Large solvent peaks clipped

Volume Inj. : 1 µl
 Signal #1 Phase : ZB-MR2 Signal #2 Phase: ZB-MR1
 Signal #1 Info : 30M x 0.32mm x0.2 Signal #2 Info : 30M x 0.32mm x 0.50µm

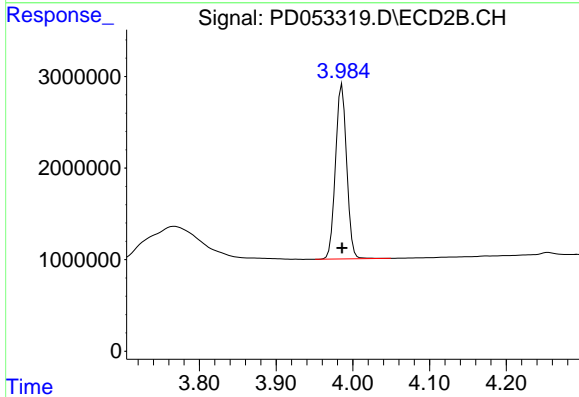


Instrument :
 ECD_D
 ClientSampleId :
 INDB301

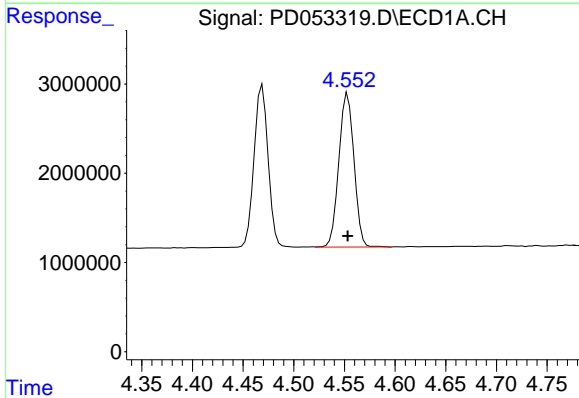


#1 Tetrachloro-m-xylene
 R.T.: 3.317 min
 Delta R.T.: 0.000 min
 Response: 14343915
 Conc: 20.00 ng/ml

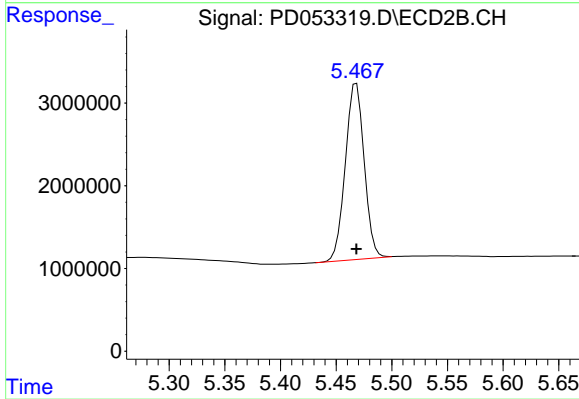
Instrument :
 ECD_D
 ClientSampled :
 INDB301



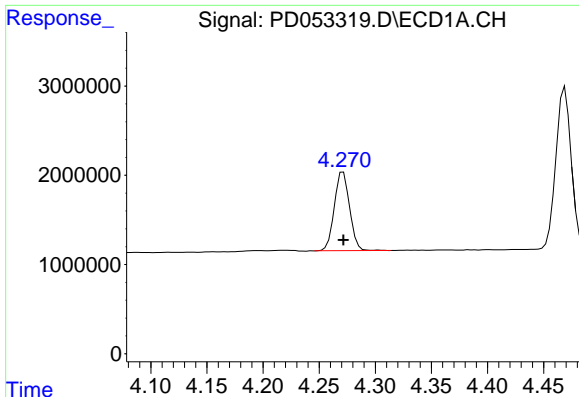
#1 Tetrachloro-m-xylene
 R.T.: 3.986 min
 Delta R.T.: 0.000 min
 Response: 19305723
 Conc: 20.00 ng/ml



#5 Aldrin
 R.T.: 4.553 min
 Delta R.T.: 0.000 min
 Response: 17906847
 Conc: 20.00 ng/ml



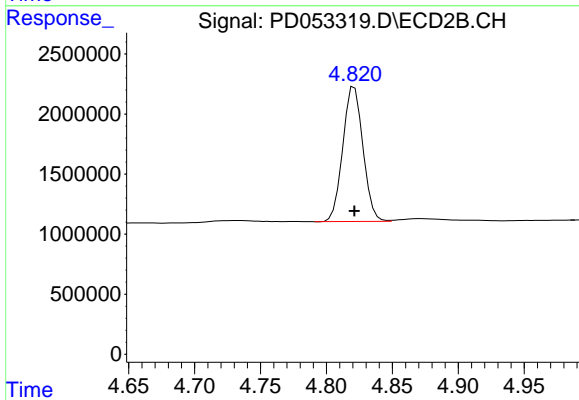
#5 Aldrin
 R.T.: 5.468 min
 Delta R.T.: 0.000 min
 Response: 25163482
 Conc: 20.00 ng/ml



#6 beta-BHC

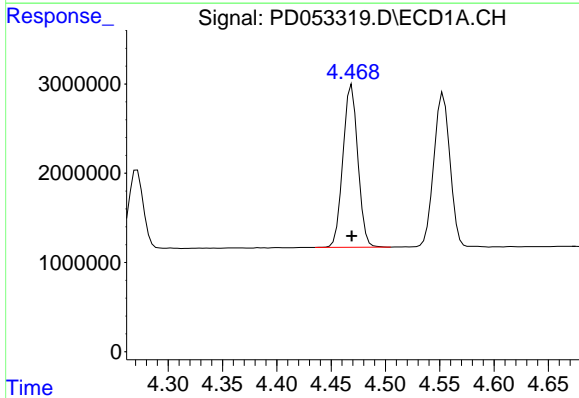
R.T.: 4.272 min
 Delta R.T.: 0.000 min
 Response: 8383415
 Conc: 20.00 ng/ml

Instrument :
 ECD_D
 ClientSampled :
 INDB301



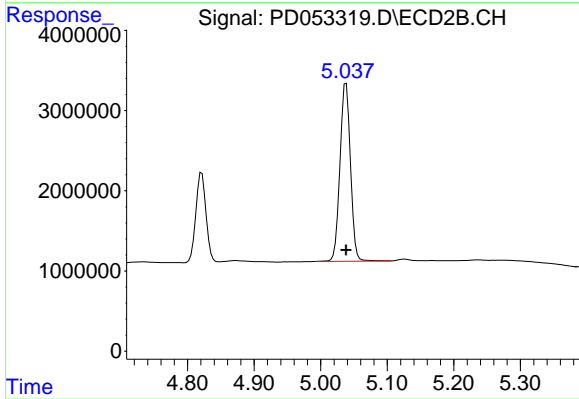
#6 beta-BHC

R.T.: 4.821 min
 Delta R.T.: 0.000 min
 Response: 11939353
 Conc: 20.00 ng/ml



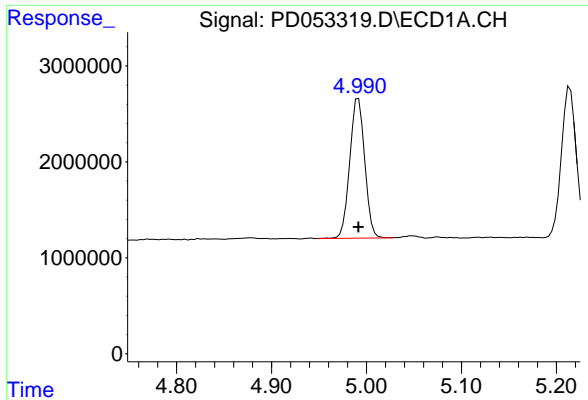
#7 delta-BHC

R.T.: 4.469 min
 Delta R.T.: 0.000 min
 Response: 17438312
 Conc: 20.00 ng/ml



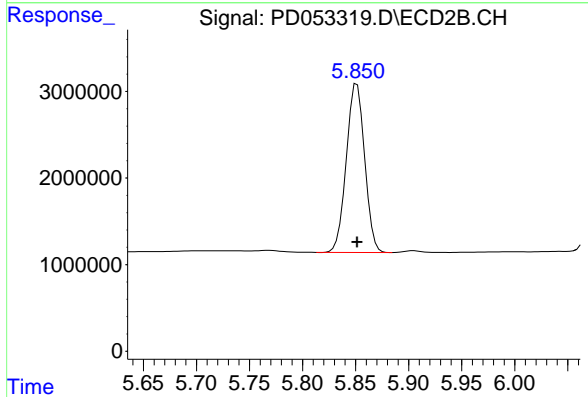
#7 delta-BHC

R.T.: 5.038 min
 Delta R.T.: 0.000 min
 Response: 24271428
 Conc: 20.00 ng/ml

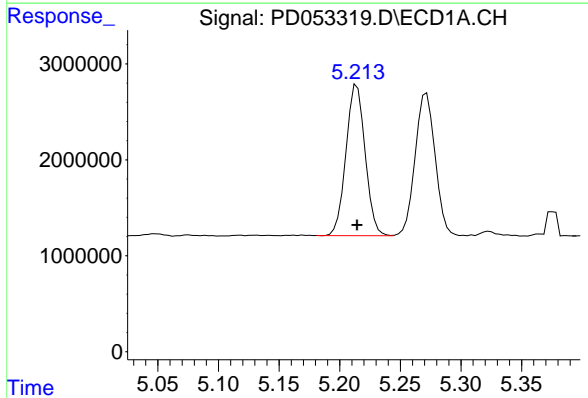


#8 Heptachlor epoxide
 R.T.: 4.992 min
 Delta R.T.: 0.000 min
 Response: 15936571
 Conc: 20.00 ng/ml

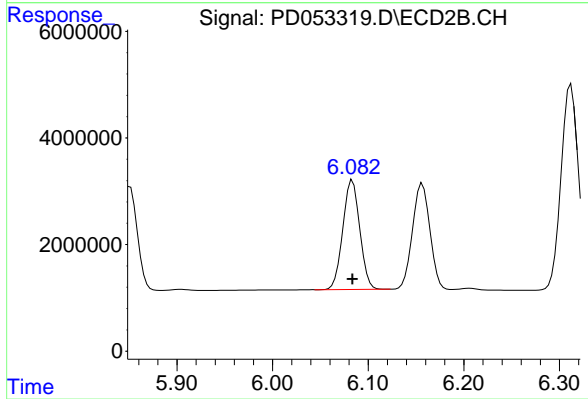
Instrument :
 ECD_D
 ClientSampled :
 INDB301



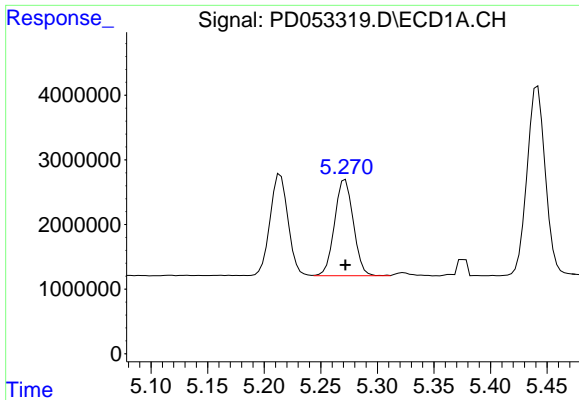
#8 Heptachlor epoxide
 R.T.: 5.851 min
 Delta R.T.: 0.000 min
 Response: 23384337
 Conc: 20.00 ng/ml



#10 trans-Chlordane
 R.T.: 5.214 min
 Delta R.T.: 0.000 min
 Response: 17275175
 Conc: 20.00 ng/ml

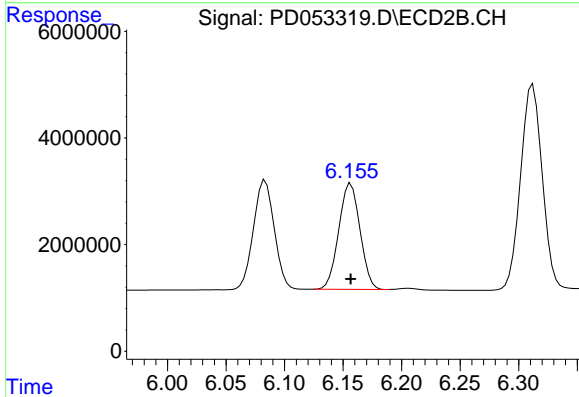


#10 trans-Chlordane
 R.T.: 6.084 min
 Delta R.T.: 0.000 min
 Response: 25383135
 Conc: 20.00 ng/ml

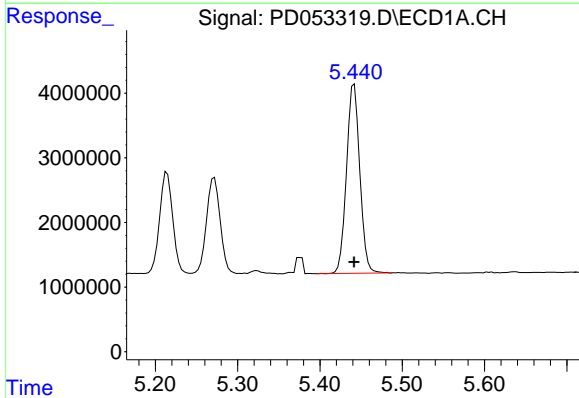


#11 cis-Chlordane
 R.T.: 5.272 min
 Delta R.T.: 0.000 min
 Response: 17151842
 Conc: 20.00 ng/ml

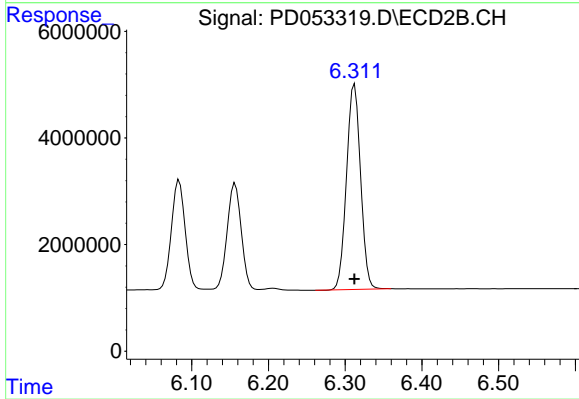
Instrument :
 ECD_D
 ClientSampled :
 INDB301



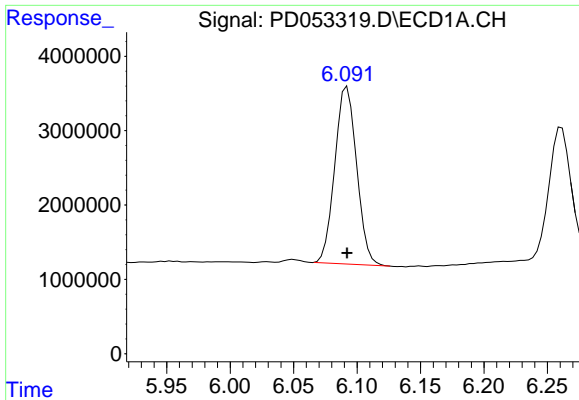
#11 cis-Chlordane
 R.T.: 6.157 min
 Delta R.T.: 0.000 min
 Response: 25133905
 Conc: 20.00 ng/ml



#12 4,4'-DDE
 R.T.: 5.442 min
 Delta R.T.: 0.000 min
 Response: 32984287
 Conc: 40.00 ng/ml

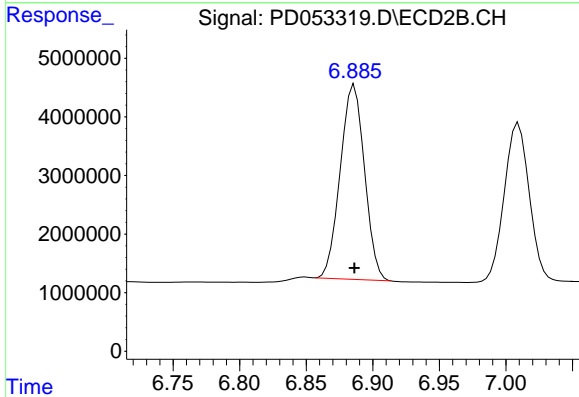


#12 4,4'-DDE
 R.T.: 6.312 min
 Delta R.T.: 0.000 min
 Response: 49396451
 Conc: 40.00 ng/ml

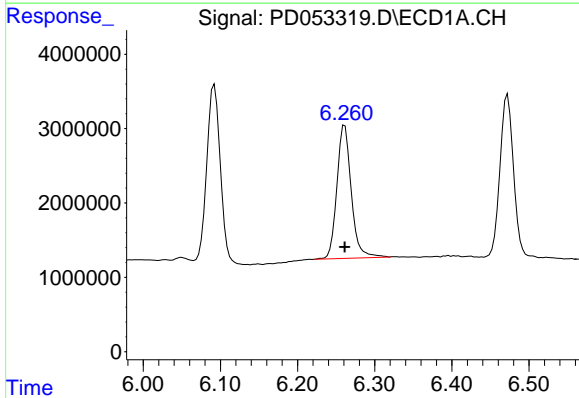


#15 Endosulfan II
 R.T.: 6.092 min
 Delta R.T.: 0.000 min
 Response: 28568525
 Conc: 40.00 ng/ml

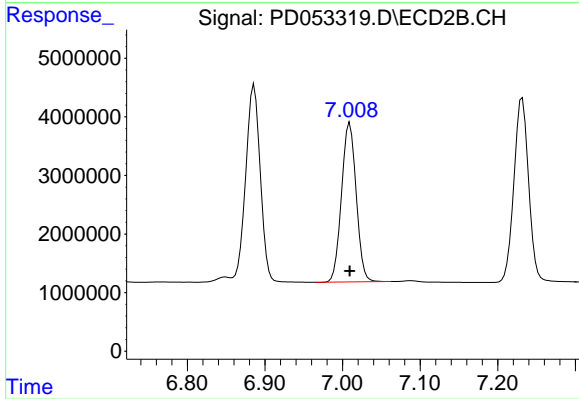
Instrument :
 ECD_D
 ClientSampled :
 INDB301



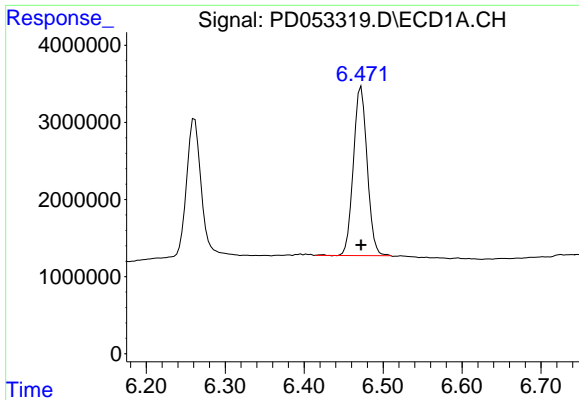
#15 Endosulfan II
 R.T.: 6.886 min
 Delta R.T.: 0.000 min
 Response: 42149774
 Conc: 40.00 ng/ml



#18 Endrin aldehyde
 R.T.: 6.261 min
 Delta R.T.: 0.000 min
 Response: 23188738
 Conc: 40.00 ng/ml

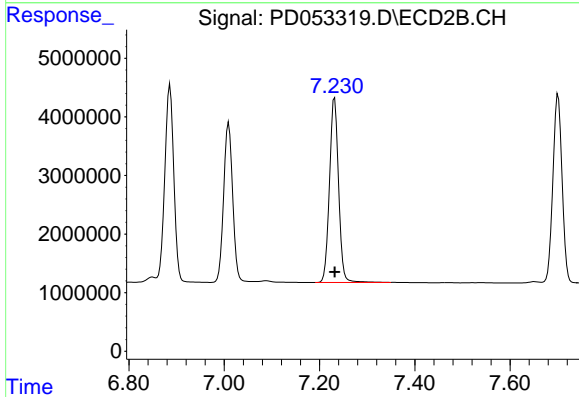


#18 Endrin aldehyde
 R.T.: 7.010 min
 Delta R.T.: 0.000 min
 Response: 35664031
 Conc: 40.00 ng/ml

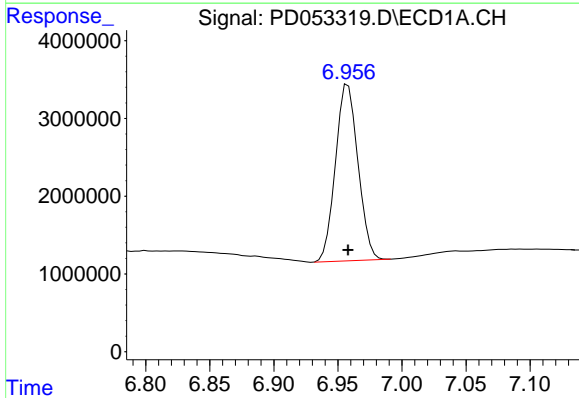


#19 Endosulfan Sulfate
 R.T.: 6.472 min
 Delta R.T.: 0.000 min
 Response: 26668161
 Conc: 40.00 ng/ml

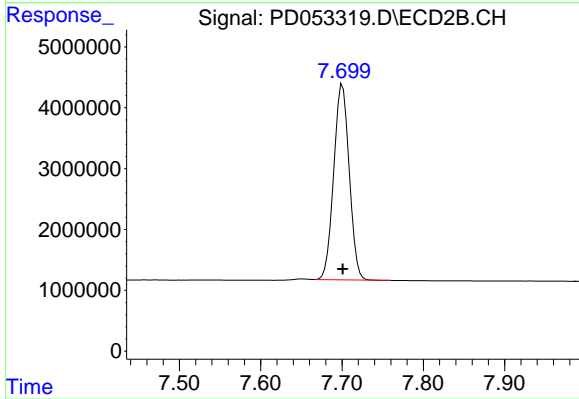
Instrument :
 ECD_D
 ClientSampleId :
 INDB301



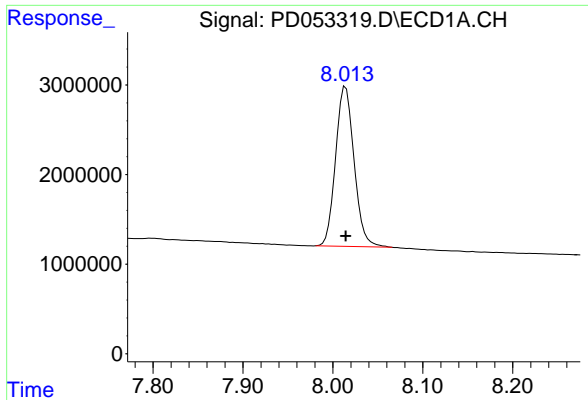
#19 Endosulfan Sulfate
 R.T.: 7.232 min
 Delta R.T.: 0.000 min
 Response: 42002021
 Conc: 40.00 ng/ml



#21 Endrin ketone
 R.T.: 6.958 min
 Delta R.T.: 0.000 min
 Response: 27746378
 Conc: 40.00 ng/ml



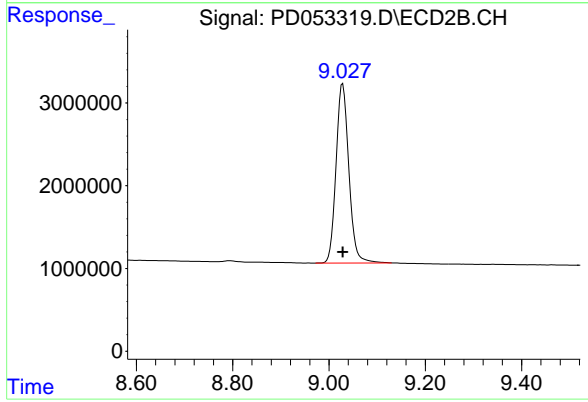
#21 Endrin ketone
 R.T.: 7.701 min
 Delta R.T.: 0.000 min
 Response: 42616371
 Conc: 40.00 ng/ml



#27 Decachlorobiphenyl

R.T.: 8.014 min
Delta R.T.: 0.000 min
Response: 25507446
Conc: 40.00 ng/ml

Instrument :
ECD_D
ClientSampled :
INDB301



#27 Decachlorobiphenyl

R.T.: 9.029 min
Delta R.T.: 0.000 min
Response: 40061848
Conc: 40.00 ng/ml