

Data Path : Z:\pestpcbsrv\HPCHEM1\ECD_D\Data\PD052124\
 Data File : PD082913.D
 Signal(s) : Signal #1: ECD1A.ch Signal #2: ECD2B.ch
 Acq On : 17 May 2024 19:37
 Operator : AR\AJ
 Sample : P2513-01MS
 Misc :
 ALS Vial : 12 Sample Multiplier: 1

Instrument :
 ECD_D
 ClientSampleId :
 TP-13MS

Integration File signal 1: autoint1.e
 Integration File signal 2: autoint2.e
 Quant Time: May 17 23:22:08 2024
 Quant Method : Z:\pestpcbsrv\HPCHEM1\ECD_D\Method\PD051324.M
 Quant Title : GC Extractables
 QLast Update : Mon May 13 15:39:20 2024
 Response via : Initial Calibration
 Integrator: ChemStation

Volume Inj. : 1 µl
 Signal #1 Phase : ZB-MR2 Signal #2 Phase: ZB-MR2
 Signal #1 Info : 30M x 0.32mm x0.5 Signal #2 Info : 30M x 0.32mm x 0.25µm

	Compound	RT#1	RT#2	Resp#1	Resp#2	ng/ml	ng/ml

System Monitoring Compounds							
1)	SA Tetrachlo...	3.566	2.778	27711212	70914777	17.899	17.893
28)	SA Decachlor...	9.118	7.904	27301560	55637418	13.672	14.394
Target Compounds							
2)	A alpha-BHC	4.023	3.277	120.2E6	282.4E6	43.893	45.277
3)	MA gamma-BHC...	4.356	3.605	113.8E6	262.3E6	43.054	44.384
4)	MA Heptachlor	4.949	3.943	117.3E6	252.7E6	46.508	45.656
5)	MB Aldrin	5.292	4.222	113.8E6	246.2E6	44.158	43.199
6)	B beta-BHC	4.552	3.900	45914321	111.8E6	43.839	46.830
7)	B delta-BHC	4.802	4.129	113.3E6	254.5E6	45.615	43.969
8)	Heptachlo...	5.720	4.723	99751870	220.5E6	42.766	43.765
9)	A Endosulfan I	6.106	5.093	95688811	187.0E6	44.313	40.548
10)	B gamma-Chl...	5.976	4.972	105.7E6	241.9E6	46.661	48.388
11)	B alpha-Chl...	6.055	5.036	103.5E6	228.7E6	45.763	46.046
12)	B 4,4'-DDE	6.227	5.225	80294550	201.2E6	36.700	43.095
13)	MA Dieldrin	6.382	5.356	94003871	226.7E6	42.034	45.097
14)	MA Endrin	6.613	5.631	79130208	191.0E6	42.056	43.683
15)	B Endosulfa...	6.833	5.924	80482371	182.9E6	40.340	43.788
16)	A 4,4'-DDD	6.746	5.778	69471642	159.2E6	43.431	42.313
17)	MA 4,4'-DDT	7.062	6.029	72088254	171.1E6	42.704	44.609
18)	B Endrin al...	6.963	6.104	60133205	133.8E6	42.948	42.842
19)	B Endosulfa...	7.199	6.326	70892100	169.4E6	40.178	42.473
20)	A Methoxychlor	7.538	6.603	35426427	85240214	38.647	41.950
21)	B Endrin ke...	7.686	6.832	79253709	179.2E6	41.234	39.412
22)	Mirex	8.162	7.013	60593745	141.6E6	39.533	39.646
23)	Chlordane-1	4.730	3.769	516155	2001412	5.391	10.927 #
24)	Chlordane-2	5.292f	4.347	113.8E6	2613121	1149.746	12.333 #
25)	Chlordane-3	5.976	4.972	105.7E6	241.9E6	268.190	401.356 #
26)	Chlordane-4	6.055	5.036	103.5E6	228.7E6	220.392	397.931 #
27)	Chlordane-5	0.000	5.924	0	182.9E6	N.D.	906.794 #

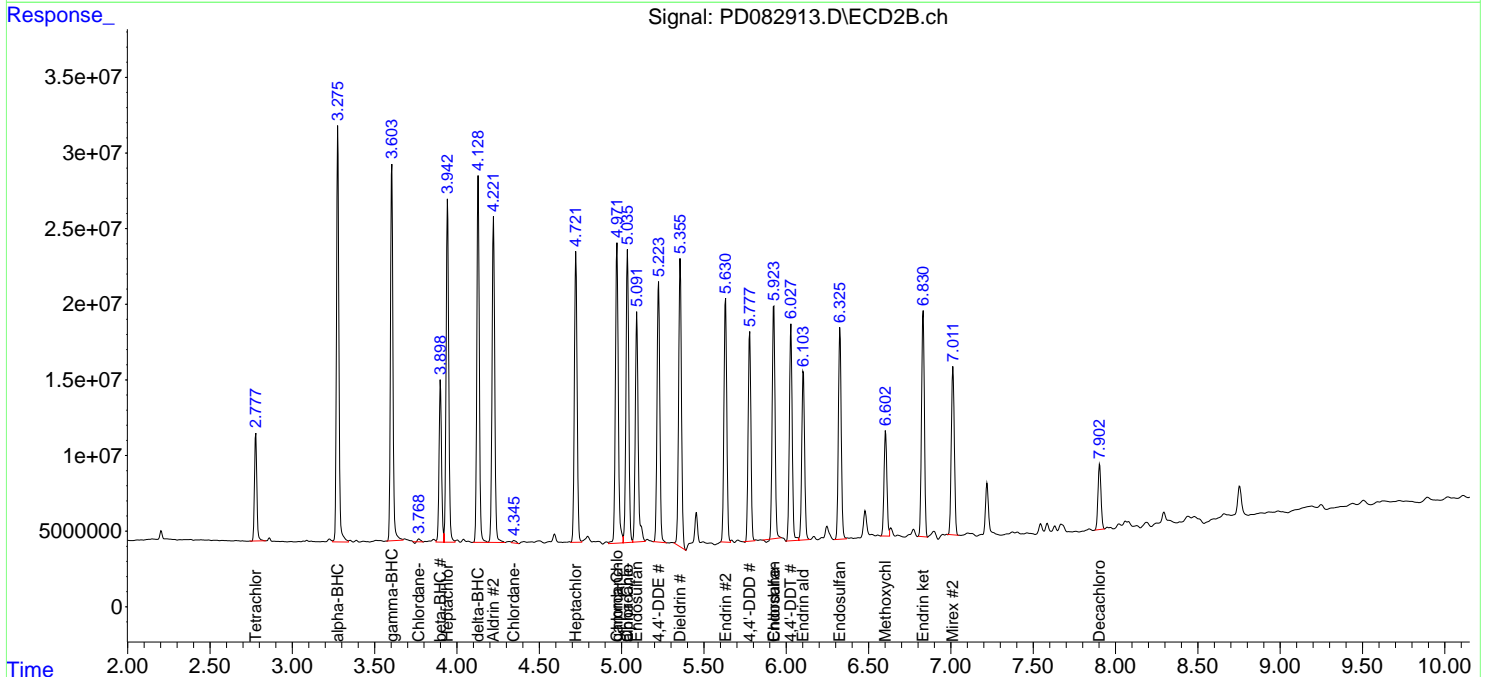
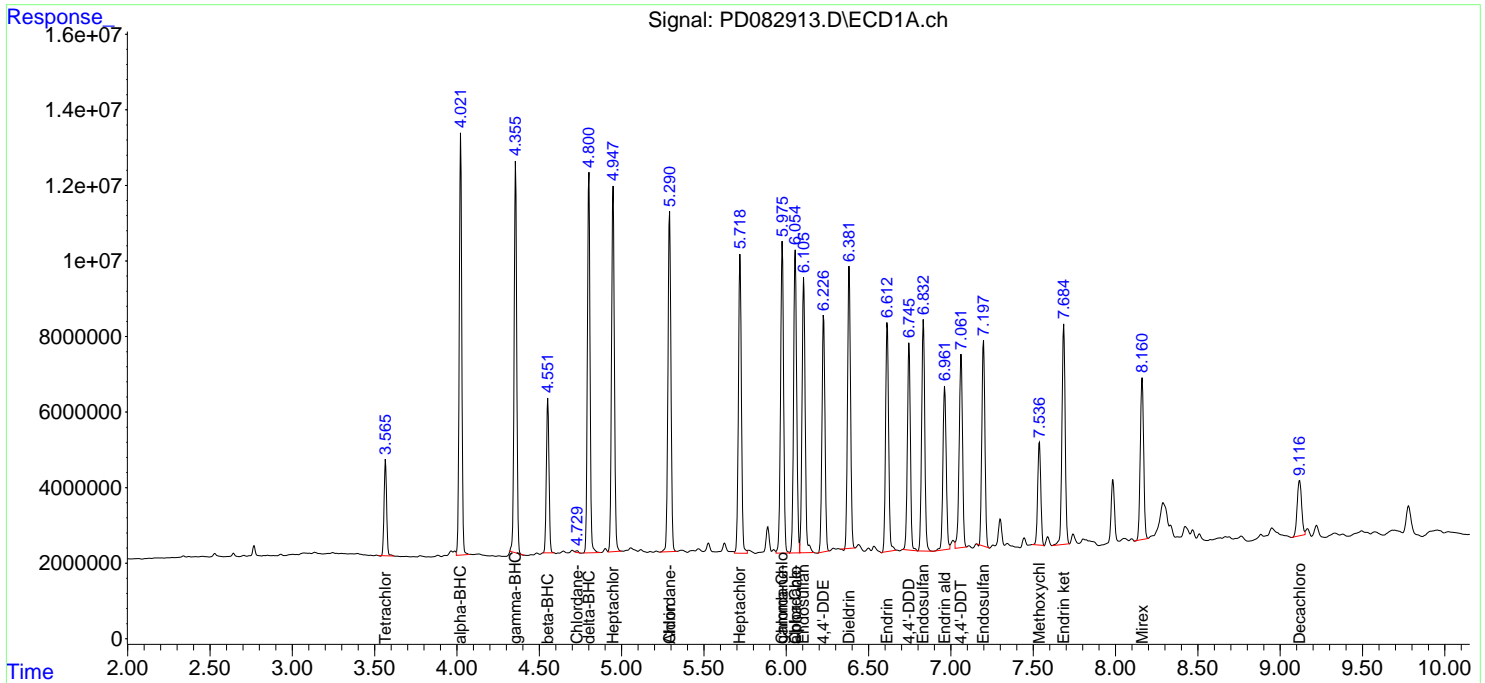
(f)=RT Delta > 1/2 Window (#)=Amounts differ by > 25% (m)=manual int.

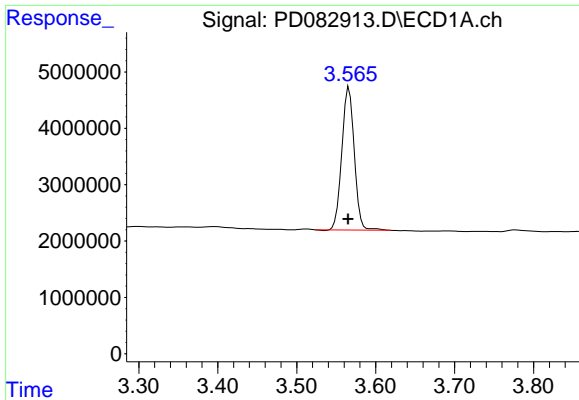
Data Path : Z:\pestpcbsrv\HPCHEM1\ECD_D\Data\PD052124\
 Data File : PD082913.D
 Signal(s) : Signal #1: ECD1A.ch Signal #2: ECD2B.ch
 Acq On : 17 May 2024 19:37
 Operator : AR\AJ
 Sample : P2513-01MS
 Misc :
 ALS Vial : 12 Sample Multiplier: 1

Instrument :
 ECD_D
 ClientSampleId :
 TP-13MS

Integration File signal 1: autoint1.e
 Integration File signal 2: autoint2.e
 Quant Time: May 17 23:22:08 2024
 Quant Method : Z:\pestpcbsrv\HPCHEM1\ECD_D\Method\PD051324.M
 Quant Title : GC Extractables
 QLast Update : Mon May 13 15:39:20 2024
 Response via : Initial Calibration
 Integrator: ChemStation

Volume Inj. : 1 µl
 Signal #1 Phase : ZB-MR1 Signal #2 Phase: ZB-MR2
 Signal #1 Info : 30M x 0.32mm x0.5 Signal #2 Info : 30M x 0.32mm x 0.25µm

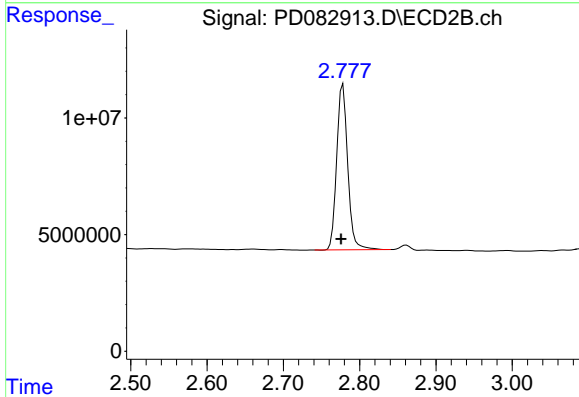




#1 Tetrachloro-m-xylene

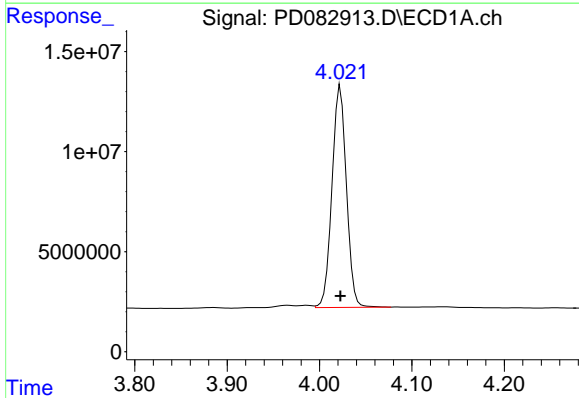
R.T.: 3.566 min
 Delta R.T.: 0.001 min
 Response: 27711212
 Conc: 17.90 ng/ml

Instrument :
 ECD_D
 ClientSampleId :
 TP-13MS



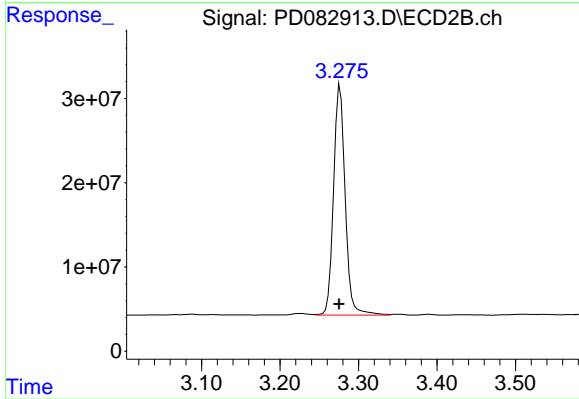
#1 Tetrachloro-m-xylene

R.T.: 2.778 min
 Delta R.T.: 0.003 min
 Response: 70914777
 Conc: 17.89 ng/ml



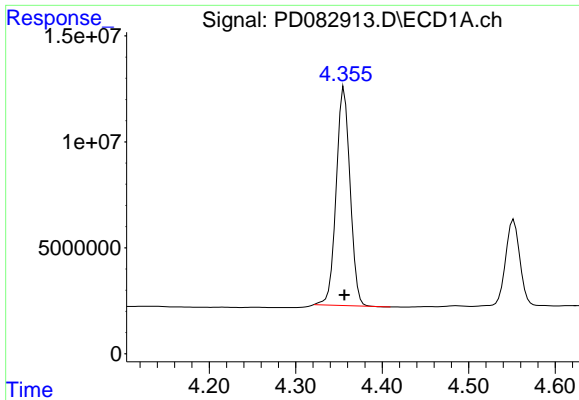
#2 alpha-BHC

R.T.: 4.023 min
 Delta R.T.: 0.000 min
 Response: 120229190
 Conc: 43.89 ng/ml



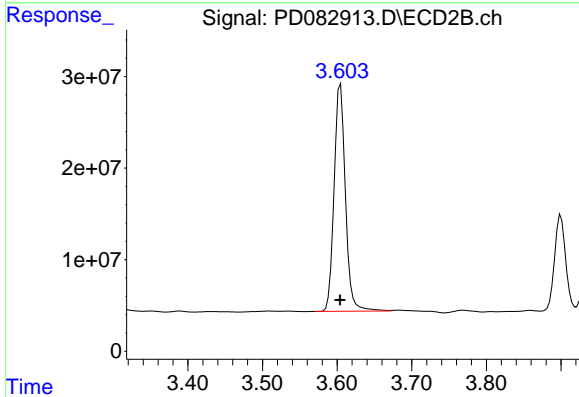
#2 alpha-BHC

R.T.: 3.277 min
 Delta R.T.: 0.001 min
 Response: 282440763
 Conc: 45.28 ng/ml

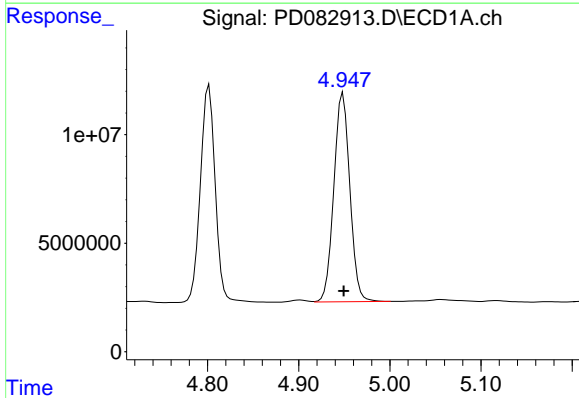


#3 gamma-BHC (Lindane)
 R.T.: 4.356 min
 Delta R.T.: 0.000 min
 Response: 113801082
 Conc: 43.05 ng/ml

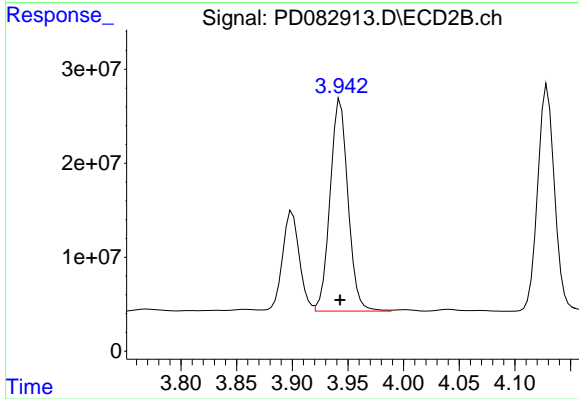
Instrument :
 ECD_D
 ClientSampleId :
 TP-13MS



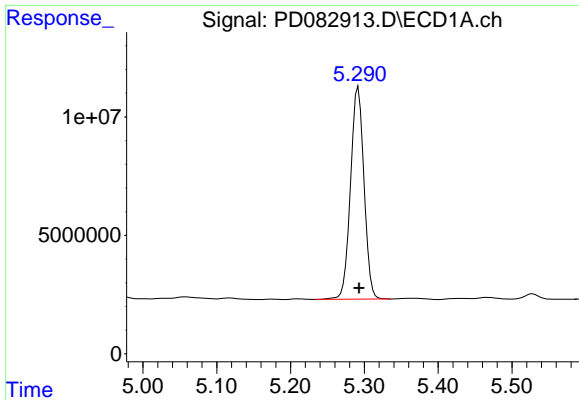
#3 gamma-BHC (Lindane)
 R.T.: 3.605 min
 Delta R.T.: 0.000 min
 Response: 262313426
 Conc: 44.38 ng/ml



#4 Heptachlor
 R.T.: 4.949 min
 Delta R.T.: 0.000 min
 Response: 117297006
 Conc: 46.51 ng/ml



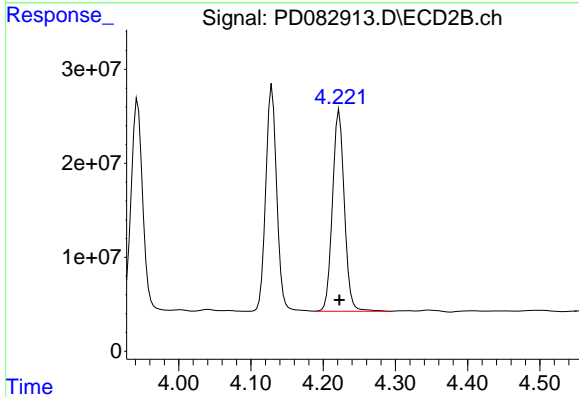
#4 Heptachlor
 R.T.: 3.943 min
 Delta R.T.: 0.000 min
 Response: 252719859
 Conc: 45.66 ng/ml



#5 Aldrin

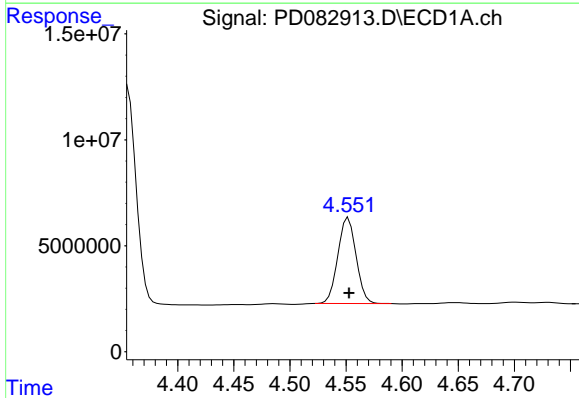
R.T.: 5.292 min
 Delta R.T.: 0.000 min
 Response: 113789164
 Conc: 44.16 ng/ml

Instrument :
 ECD_D
 ClientSampleId :
 TP-13MS



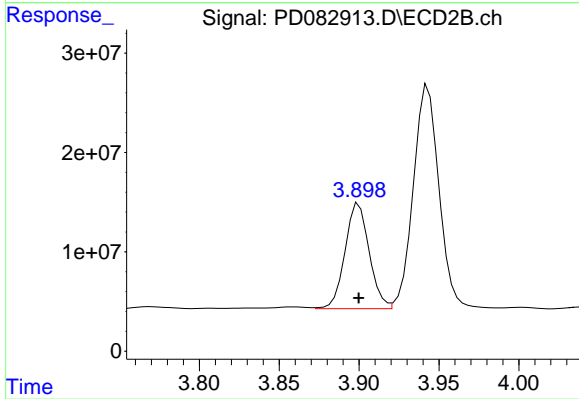
#5 Aldrin

R.T.: 4.222 min
 Delta R.T.: 0.000 min
 Response: 246172046
 Conc: 43.20 ng/ml



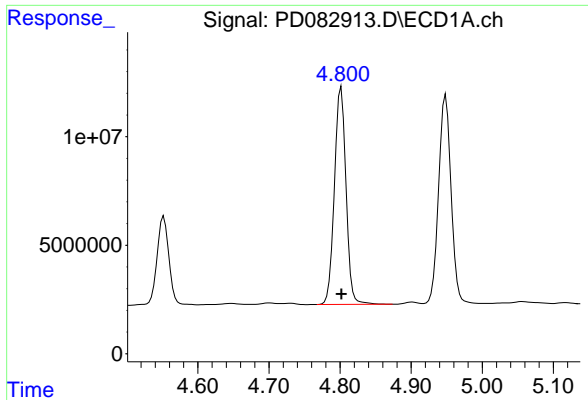
#6 beta-BHC

R.T.: 4.552 min
 Delta R.T.: 0.000 min
 Response: 45914321
 Conc: 43.84 ng/ml



#6 beta-BHC

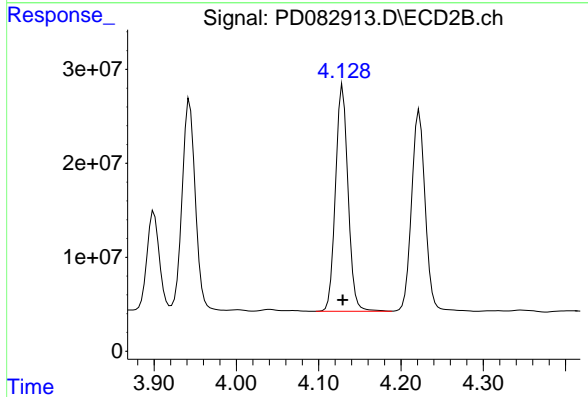
R.T.: 3.900 min
 Delta R.T.: 0.000 min
 Response: 111834953
 Conc: 46.83 ng/ml



#7 delta-BHC

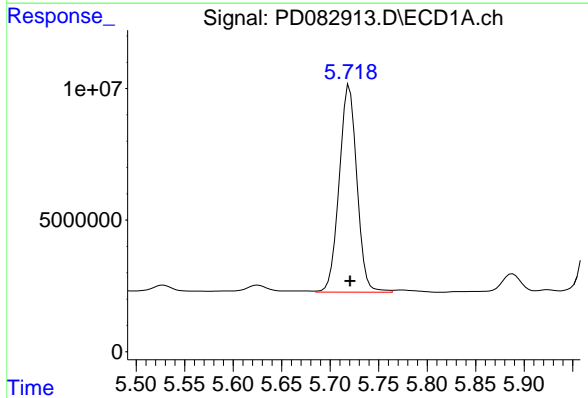
R.T.: 4.802 min
 Delta R.T.: 0.000 min
 Response: 113343036
 Conc: 45.62 ng/ml

Instrument :
 ECD_D
 ClientSampleId :
 TP-13MS



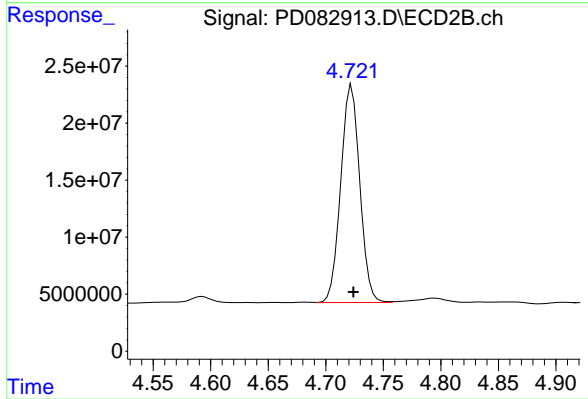
#7 delta-BHC

R.T.: 4.129 min
 Delta R.T.: 0.000 min
 Response: 254506155
 Conc: 43.97 ng/ml



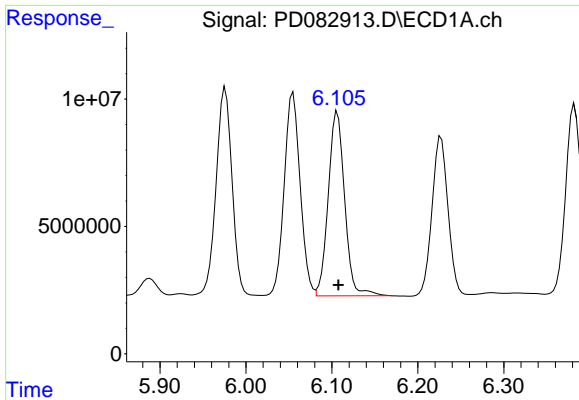
#8 Heptachlor epoxide

R.T.: 5.720 min
 Delta R.T.: 0.000 min
 Response: 99751870
 Conc: 42.77 ng/ml



#8 Heptachlor epoxide

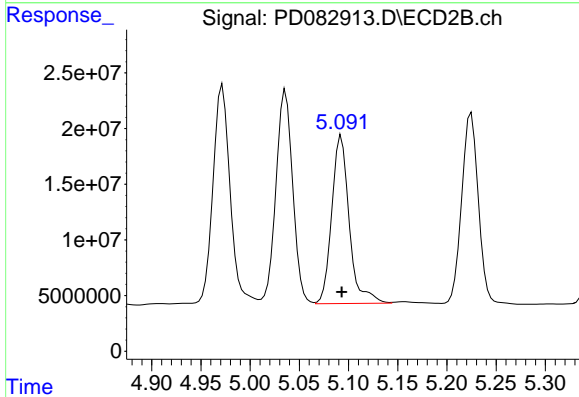
R.T.: 4.723 min
 Delta R.T.: -0.001 min
 Response: 220468065
 Conc: 43.76 ng/ml



#9 Endosulfan I

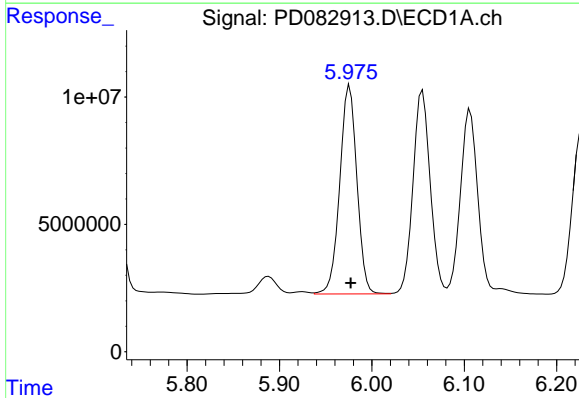
R.T.: 6.106 min
 Delta R.T.: -0.001 min
 Response: 95688811
 Conc: 44.31 ng/ml

Instrument :
 ECD_D
 ClientSampleId :
 TP-13MS



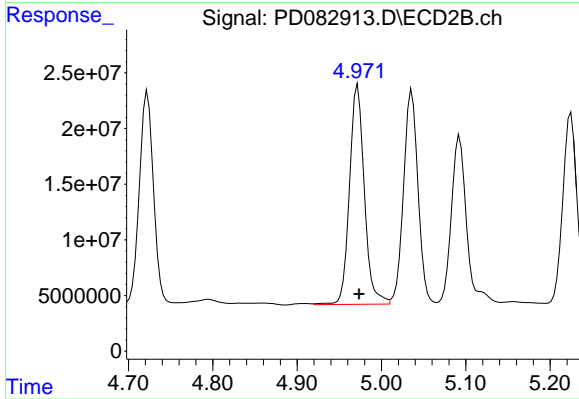
#9 Endosulfan I

R.T.: 5.093 min
 Delta R.T.: 0.000 min
 Response: 187024338
 Conc: 40.55 ng/ml



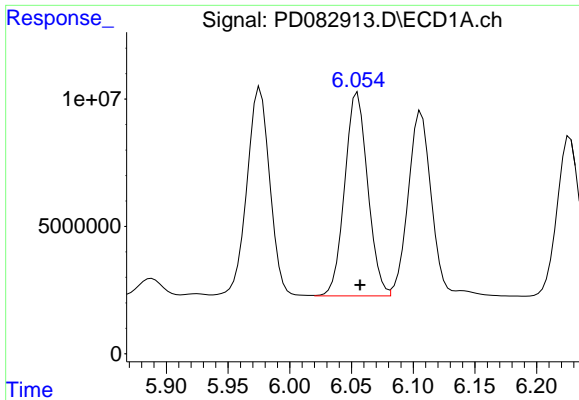
#10 gamma-Chlordane

R.T.: 5.976 min
 Delta R.T.: -0.001 min
 Response: 105682036
 Conc: 46.66 ng/ml



#10 gamma-Chlordane

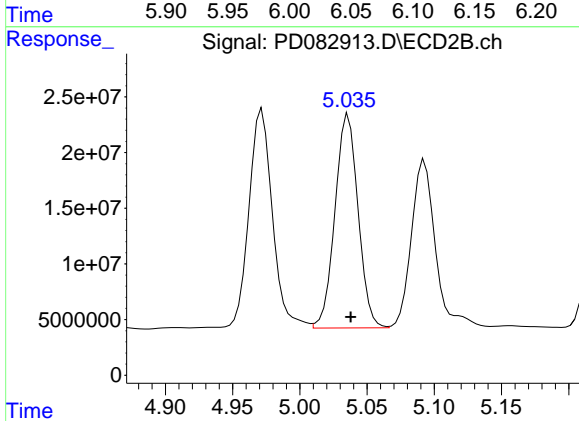
R.T.: 4.972 min
 Delta R.T.: -0.001 min
 Response: 241883065
 Conc: 48.39 ng/ml



#11 alpha-Chlordane

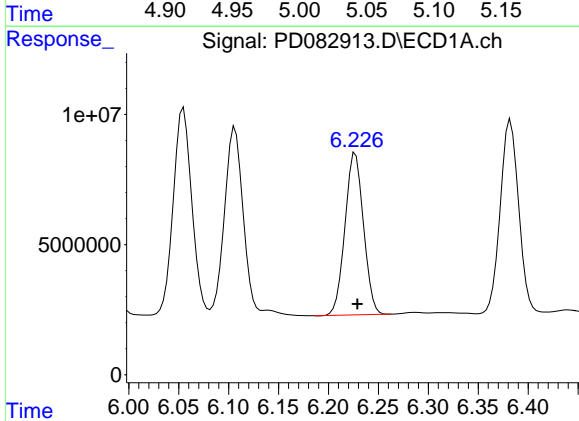
R.T.: 6.055 min
 Delta R.T.: -0.002 min
 Response: 103528750
 Conc: 45.76 ng/ml

Instrument :
 ECD_D
 ClientSampleId :
 TP-13MS



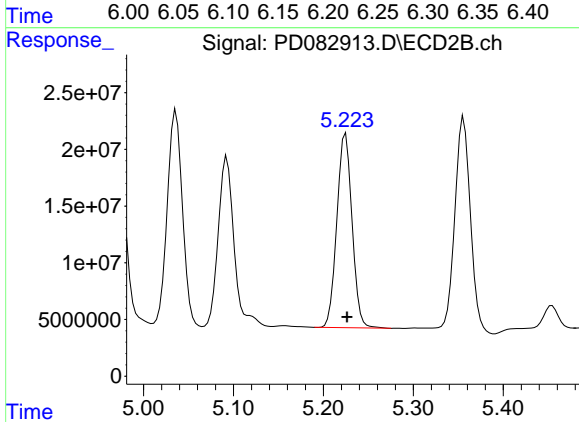
#11 alpha-Chlordane

R.T.: 5.036 min
 Delta R.T.: -0.002 min
 Response: 228663428
 Conc: 46.05 ng/ml



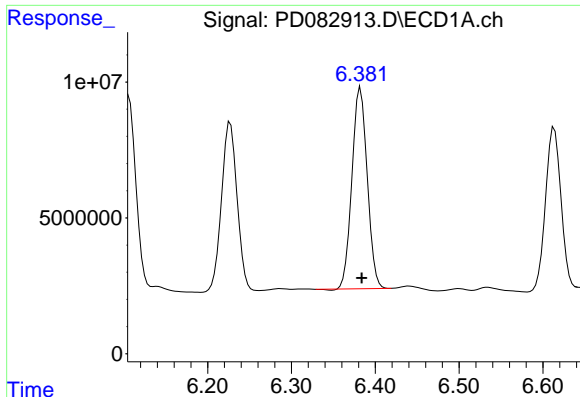
#12 4,4'-DDE

R.T.: 6.227 min
 Delta R.T.: -0.002 min
 Response: 80294550
 Conc: 36.70 ng/ml



#12 4,4'-DDE

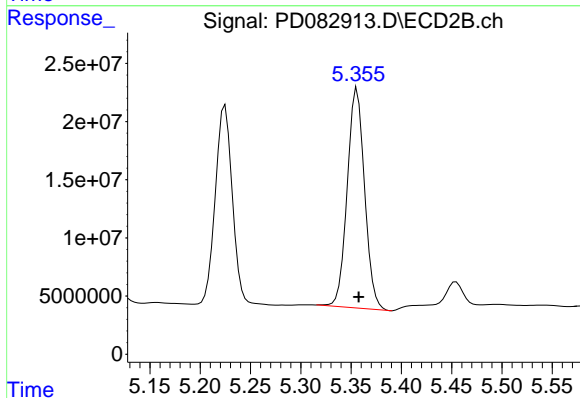
R.T.: 5.225 min
 Delta R.T.: -0.001 min
 Response: 201161263
 Conc: 43.09 ng/ml



#13 Dieldrin

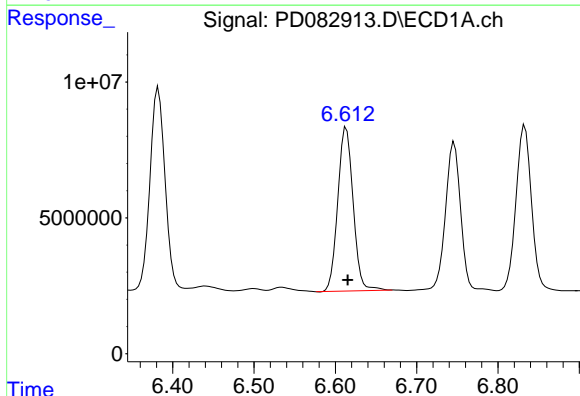
R.T.: 6.382 min
 Delta R.T.: -0.002 min
 Response: 94003871
 Conc: 42.03 ng/ml

Instrument :
 ECD_D
 ClientSampleId :
 TP-13MS



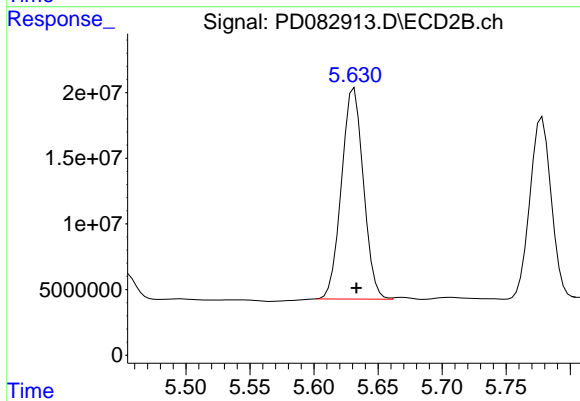
#13 Dieldrin

R.T.: 5.356 min
 Delta R.T.: -0.002 min
 Response: 226659363
 Conc: 45.10 ng/ml



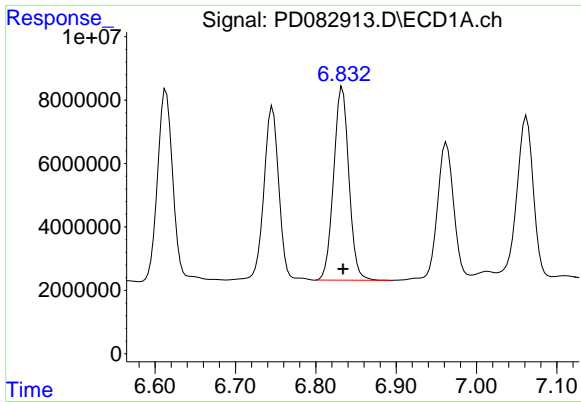
#14 Endrin

R.T.: 6.613 min
 Delta R.T.: -0.002 min
 Response: 79130208
 Conc: 42.06 ng/ml



#14 Endrin

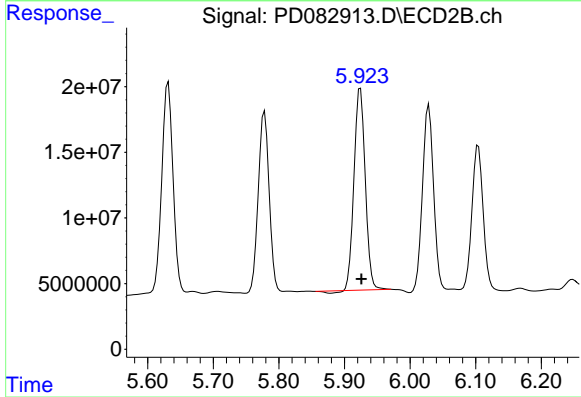
R.T.: 5.631 min
 Delta R.T.: -0.002 min
 Response: 191016436
 Conc: 43.68 ng/ml



#15 Endosulfan II

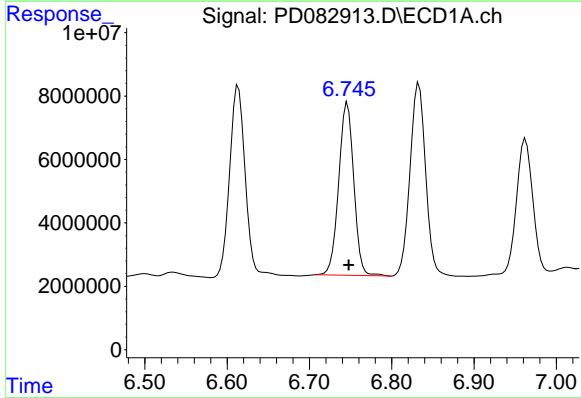
R.T.: 6.833 min
 Delta R.T.: 0.000 min
 Response: 80482371
 Conc: 40.34 ng/ml

Instrument :
 ECD_D
 ClientSampleId :
 TP-13MS



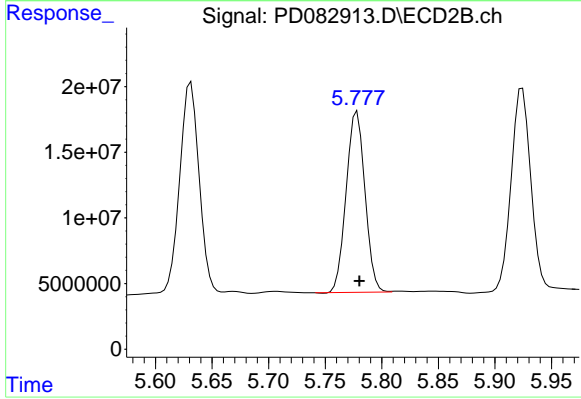
#15 Endosulfan II

R.T.: 5.924 min
 Delta R.T.: -0.002 min
 Response: 182855960
 Conc: 43.79 ng/ml



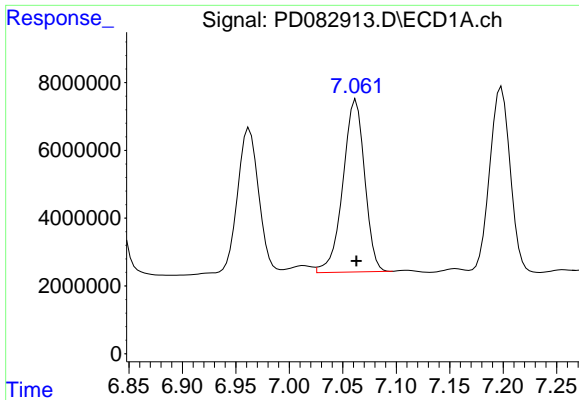
#16 4,4'-DDD

R.T.: 6.746 min
 Delta R.T.: -0.002 min
 Response: 69471642
 Conc: 43.43 ng/ml



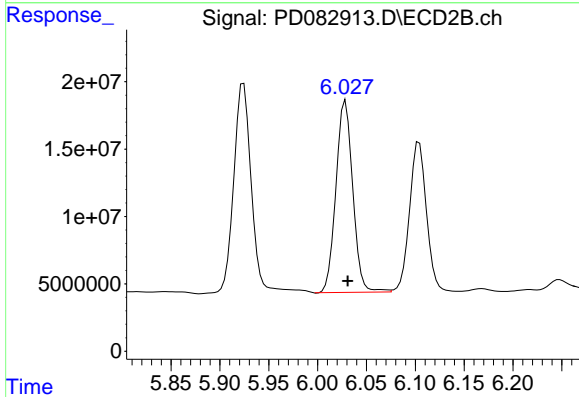
#16 4,4'-DDD

R.T.: 5.778 min
 Delta R.T.: -0.002 min
 Response: 159185614
 Conc: 42.31 ng/ml

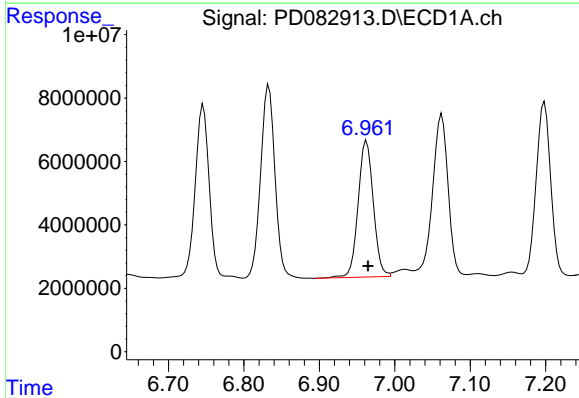


#17 4,4'-DDT
 R.T.: 7.062 min
 Delta R.T.: 0.000 min
 Response: 72088254
 Conc: 42.70 ng/ml

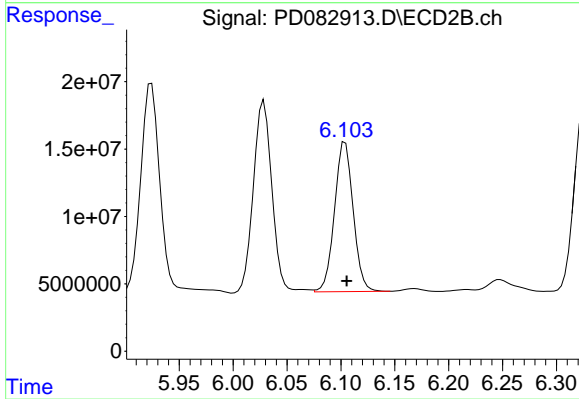
Instrument : ECD_D
 ClientSampleId : TP-13MS



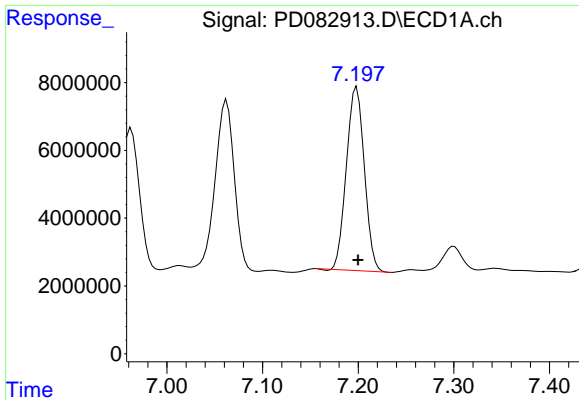
#17 4,4'-DDT
 R.T.: 6.029 min
 Delta R.T.: -0.002 min
 Response: 171060703
 Conc: 44.61 ng/ml



#18 Endrin aldehyde
 R.T.: 6.963 min
 Delta R.T.: -0.002 min
 Response: 60133205
 Conc: 42.95 ng/ml

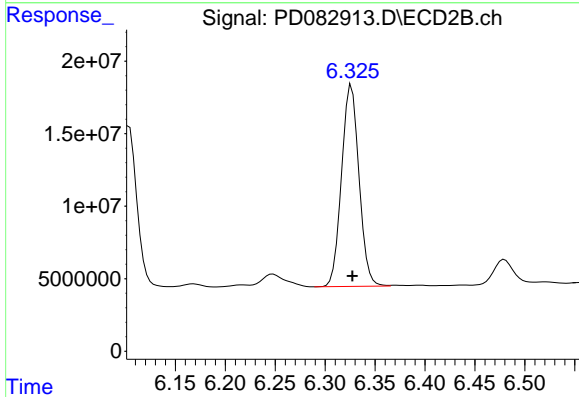


#18 Endrin aldehyde
 R.T.: 6.104 min
 Delta R.T.: -0.002 min
 Response: 133751742
 Conc: 42.84 ng/ml

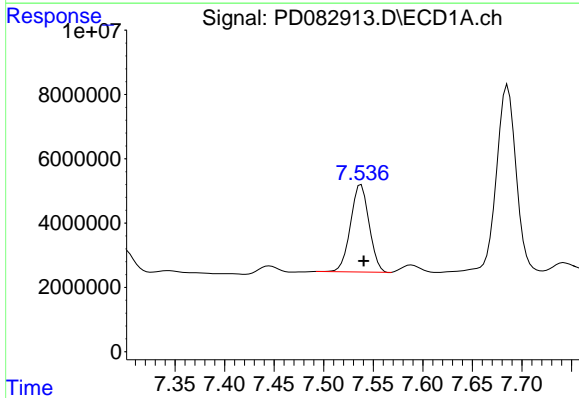


#19 Endosulfan Sulfate
 R.T.: 7.199 min
 Delta R.T.: -0.001 min
 Response: 70892100
 Conc: 40.18 ng/ml

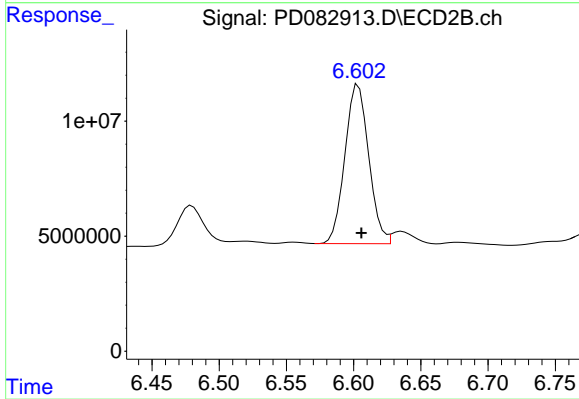
Instrument :
 ECD_D
 ClientSampleId :
 TP-13MS



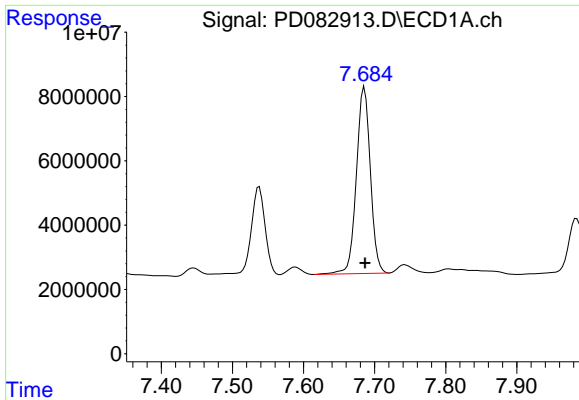
#19 Endosulfan Sulfate
 R.T.: 6.326 min
 Delta R.T.: 0.000 min
 Response: 169353649
 Conc: 42.47 ng/ml



#20 Methoxychlor
 R.T.: 7.538 min
 Delta R.T.: -0.002 min
 Response: 35426427
 Conc: 38.65 ng/ml



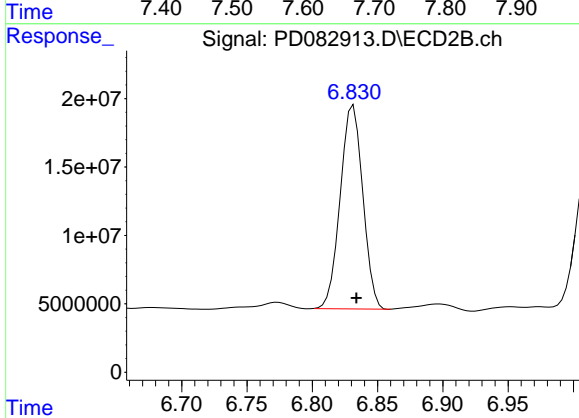
#20 Methoxychlor
 R.T.: 6.603 min
 Delta R.T.: -0.002 min
 Response: 85240214
 Conc: 41.95 ng/ml



#21 Endrin ketone

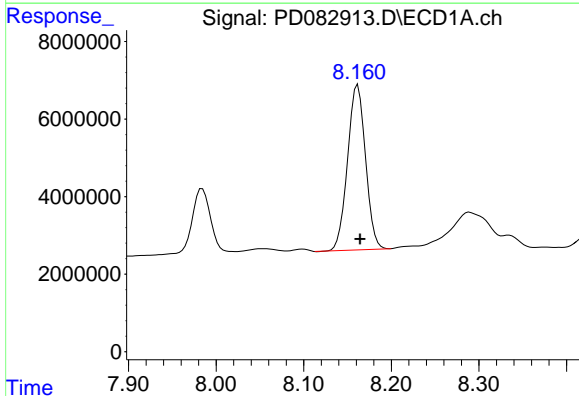
R.T.: 7.686 min
 Delta R.T.: 0.000 min
 Response: 79253709
 Conc: 41.23 ng/ml

Instrument :
 ECD_D
 ClientSampleId :
 TP-13MS



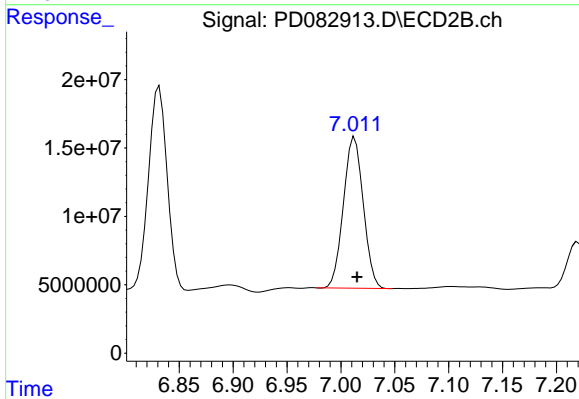
#21 Endrin ketone

R.T.: 6.832 min
 Delta R.T.: -0.002 min
 Response: 179162578
 Conc: 39.41 ng/ml



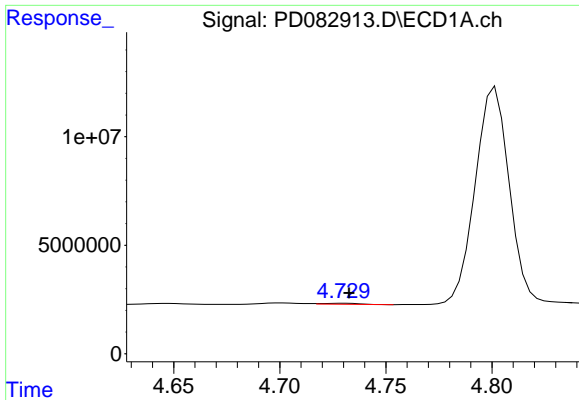
#22 Mirex

R.T.: 8.162 min
 Delta R.T.: -0.003 min
 Response: 60593745
 Conc: 39.53 ng/ml



#22 Mirex

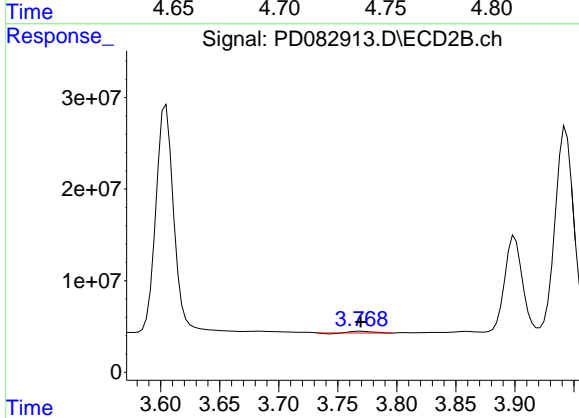
R.T.: 7.013 min
 Delta R.T.: -0.002 min
 Response: 141644778
 Conc: 39.65 ng/ml



#23 Chlordane-1

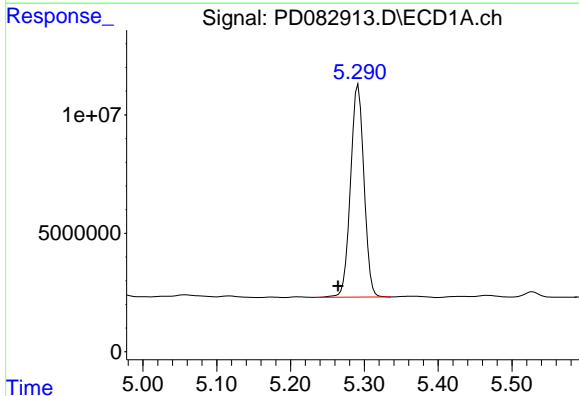
R.T.: 4.730 min
 Delta R.T.: -0.003 min
 Response: 516155
 Conc: 5.39 ng/ml

Instrument :
 ECD_D
 ClientSampleId :
 TP-13MS



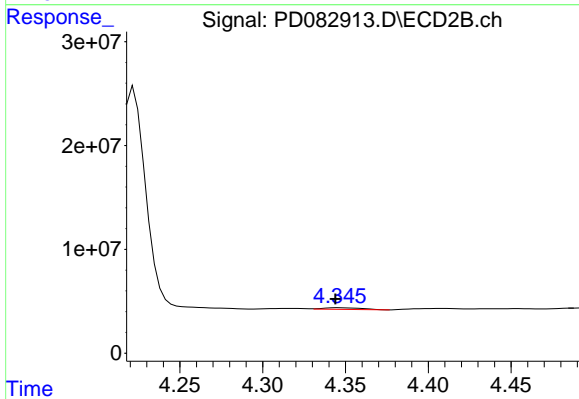
#23 Chlordane-1

R.T.: 3.769 min
 Delta R.T.: 0.000 min
 Response: 2001412
 Conc: 10.93 ng/ml



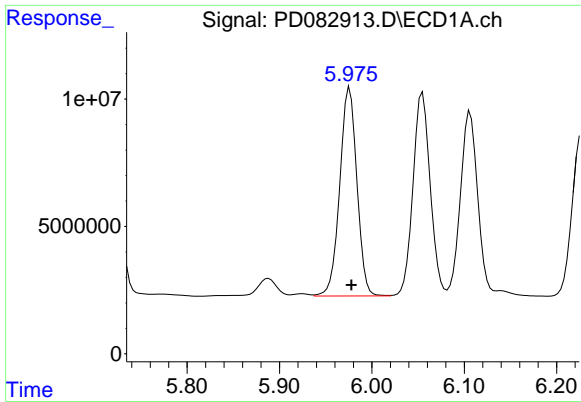
#24 Chlordane-2

R.T.: 5.292 min
 Delta R.T.: 0.027 min
 Response: 113789164
 Conc: 1149.75 ng/ml



#24 Chlordane-2

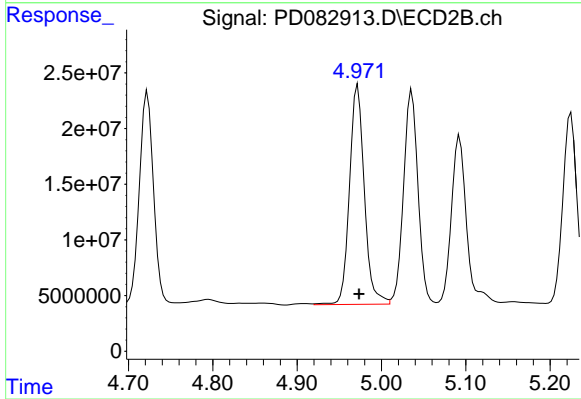
R.T.: 4.347 min
 Delta R.T.: 0.003 min
 Response: 2613121
 Conc: 12.33 ng/ml



#25 Chlordane-3

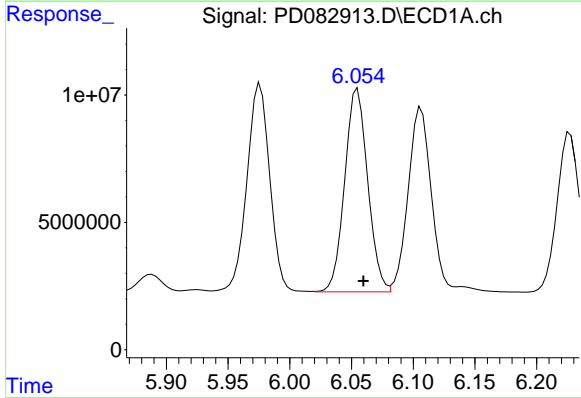
R.T.: 5.976 min
 Delta R.T.: -0.002 min
 Response: 105682036
 Conc: 268.19 ng/ml

Instrument :
 ECD_D
 ClientSampleId :
 TP-13MS



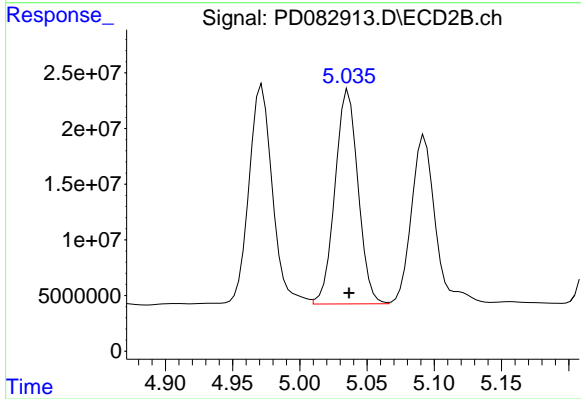
#25 Chlordane-3

R.T.: 4.972 min
 Delta R.T.: -0.001 min
 Response: 241883065
 Conc: 401.36 ng/ml



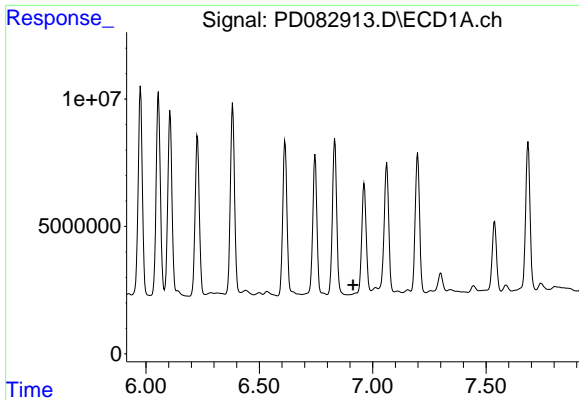
#26 Chlordane-4

R.T.: 6.055 min
 Delta R.T.: -0.005 min
 Response: 103528750
 Conc: 220.39 ng/ml



#26 Chlordane-4

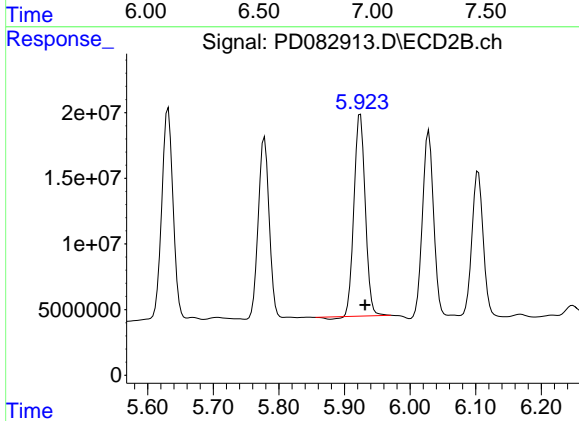
R.T.: 5.036 min
 Delta R.T.: 0.000 min
 Response: 228663428
 Conc: 397.93 ng/ml



#27 Chlordane-5

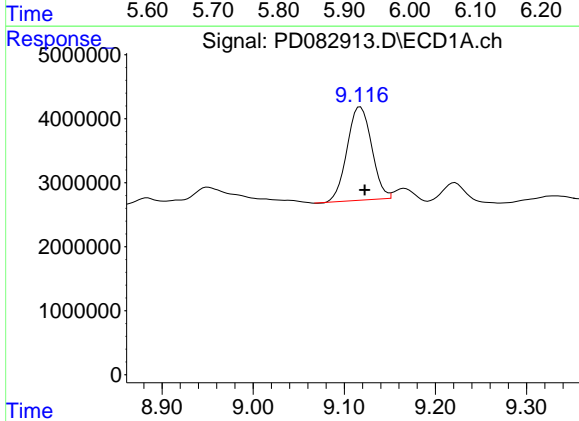
R.T.: 0.000 min
 Exp R.T.: 6.913 min
 Response: 0
 Conc: N.D.

Instrument :
 ECD_D
 ClientSampleId :
 TP-13MS



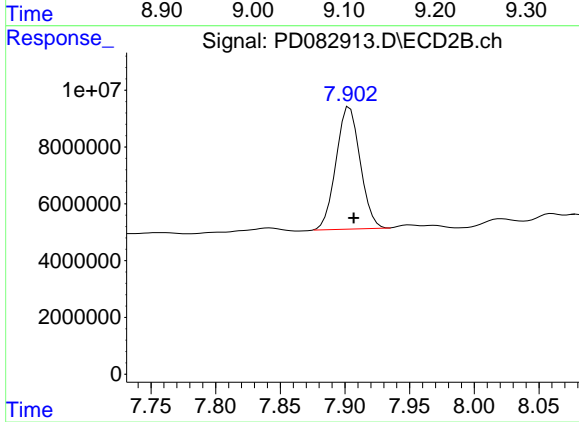
#27 Chlordane-5

R.T.: 5.924 min
 Delta R.T.: -0.007 min
 Response: 182855960
 Conc: 906.79 ng/ml



#28 Decachlorobiphenyl

R.T.: 9.118 min
 Delta R.T.: -0.005 min
 Response: 27301560
 Conc: 13.67 ng/ml



#28 Decachlorobiphenyl

R.T.: 7.904 min
 Delta R.T.: -0.003 min
 Response: 55637418
 Conc: 14.39 ng/ml