

Data Path : Z:\pestpcbsrv\HPCHEM1\ECD_D\Data\PD052220\
 Data File : PD058084.D
 Signal(s) : Signal #1: ECD1A.ch Signal #2: ECD2B.ch
 Acq On : 22 May 2020 13:20
 Operator : AJ\MA
 Sample : L2735-01
 Misc :
 ALS Vial : 11 Sample Multiplier: 1

Instrument :
 ECD_D
ClientSampled :
 C5CB6

Manual Integrations
APPROVED
 mohammad
 5/26/2020 1:49:29 PM

Integration File signal 1: autoint1.e
 Integration File signal 2: autoint2.e
 Quant Time: May 22 16:03:52 2020
 Quant Method : Z:\pestpcbsrv\HPCHEM1\ECD_D\Method\PD051820CLP.M
 Quant Title : GC Extractables
 QLast Update : Tue May 19 05:31:06 2020
 Response via : Initial Calibration
 Integrator: ChemStation

Volume Inj. : 1 µl
 Signal #1 Phase : ZB-MR2 Signal #2 Phase: ZB-MR1
 Signal #1 Info : 30M x 0.32mm x0.2 Signal #2 Info : 30M x 0.32mm x 0.50µm

Compound	RT#1	RT#2	Resp#1	Resp#2	ng/ml	ng/ml

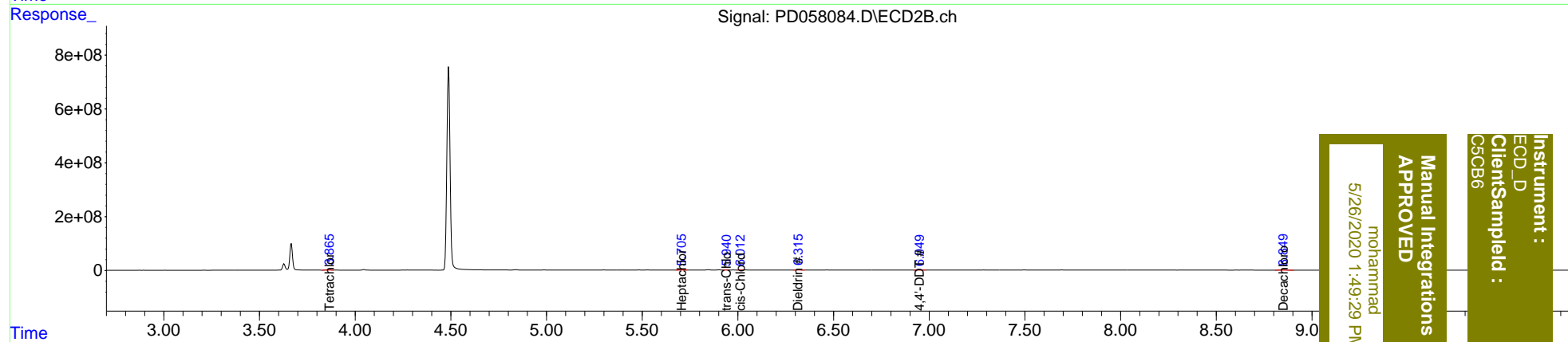
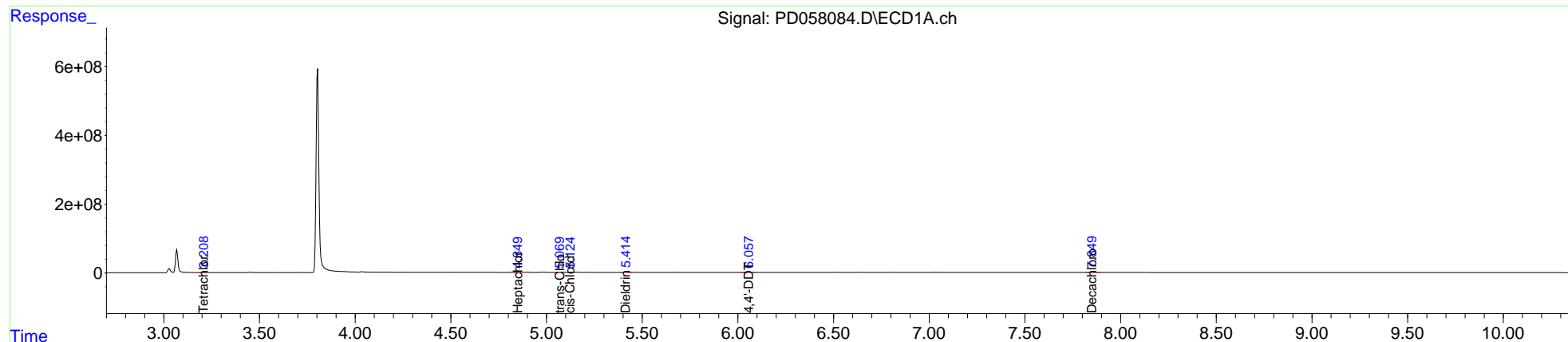
System Monitoring Compounds						
1) SA Tetrachlo...	3.209	3.866	15547403	27808708	19.832	23.684
27) SA Decachlor...	7.850	8.851	28064478	35671127	32.440	31.743
Target Compounds						
8) B Heptachlo...	4.849	5.706	7975062	18784690	8.707m	14.031 #
10) B trans-Chl...	5.070	5.940	3320795	8609412	3.554	6.262m#
11) B cis-Chlor...	5.125	6.014	6344753	8212093	6.749	5.926
13) MA Dieldrin	5.415	6.316	31383036	42478211	31.911	30.366
17) MA 4,4'-DDT	6.057	6.949	20885941	5853662	29.434m	5.366m#

(f)=RT Delta > 1/2 Window (#)=Amounts differ by > 25% (m)=manual int.

Data Path : Z:\pestpcbsrv\HPCHEM1\ECD_D\Data\PD052220\
 Data File : PD058084.D
 Signal(s) : Signal #1: ECD1A.ch Signal #2: ECD2B.ch
 Acq On : 22 May 2020 13:20
 Operator : AJ\MA
 Sample : L2735-01
 Misc :
 ALS Vial : 11 Sample Multiplier: 1

Integration File signal 1: autoint1.e
 Integration File signal 2: autoint2.e
 Quant Time: May 22 16:03:52 2020
 Quant Method : Z:\pestpcbsrv\HPCHEM1\ECD_D\Method\PD051820CLP.M
 Quant Title : GC Extractables
 QLast Update : Tue May 19 05:31:06 2020
 Response via : Initial Calibration
 Integrator: ChemStation

Volume Inj. : 1 µl
 Signal #1 Phase : ZB-MR2 Signal #2 Phase: ZB-MR1
 Signal #1 Info : 30M x 0.32mm x0.2 Signal #2 Info : 30M x 0.32mm x 0.50µm



Instrument : ECD_D
 Client Sample Id : C5CB6
 Manual Integrations APPROVED
 mohammad
 5/26/2020 1:49:29 PM