

Data Path : Z:\pestpcbsrv\HPCHEM1\ECD_D\Data\PD052221\
 Data File : PD063219.D
 Signal(s) : Signal #1: ECD1A.ch Signal #2: ECD2B.ch
 Acq On : 21 May 2021 17:39
 Operator : AR\AJ
 Sample : M2479-03
 Misc :
 ALS Vial : 26 Sample Multiplier: 1

Instrument :
 ECD_D
ClientSampleId :
 GROUND-MATERIAL-1-17-D

Integration File signal 1: autoint1.e
 Integration File signal 2: autoint2.e
 Quant Time: May 22 01:03:35 2021
 Quant Method : Z:\pestpcbsrv\HPCHEM1\ECD_D\Method\PD051721.M
 Quant Title : GC Extractables
 QLast Update : Tue May 18 07:12:39 2021
 Response via : Initial Calibration
 Integrator: ChemStation

Volume Inj. : 2 µl
 Signal #1 Phase : ZB-MR2 Signal #2 Phase: ZB-MR1
 Signal #1 Info : 30M x 0.32mm x0.2 Signal #2 Info : 30M x 0.32mm x 0.50µm

Compound	RT#1	RT#2	Resp#1	Resp#2	ng/ml	ng/ml

System Monitoring Compounds						
1) SA Tetrachlo...	3.440	3.970	12556599	127.8E6	11.399	11.026
28) SA Decachlor...	8.195	9.023	14604322	129.6E6	11.604	12.700

Target Compounds

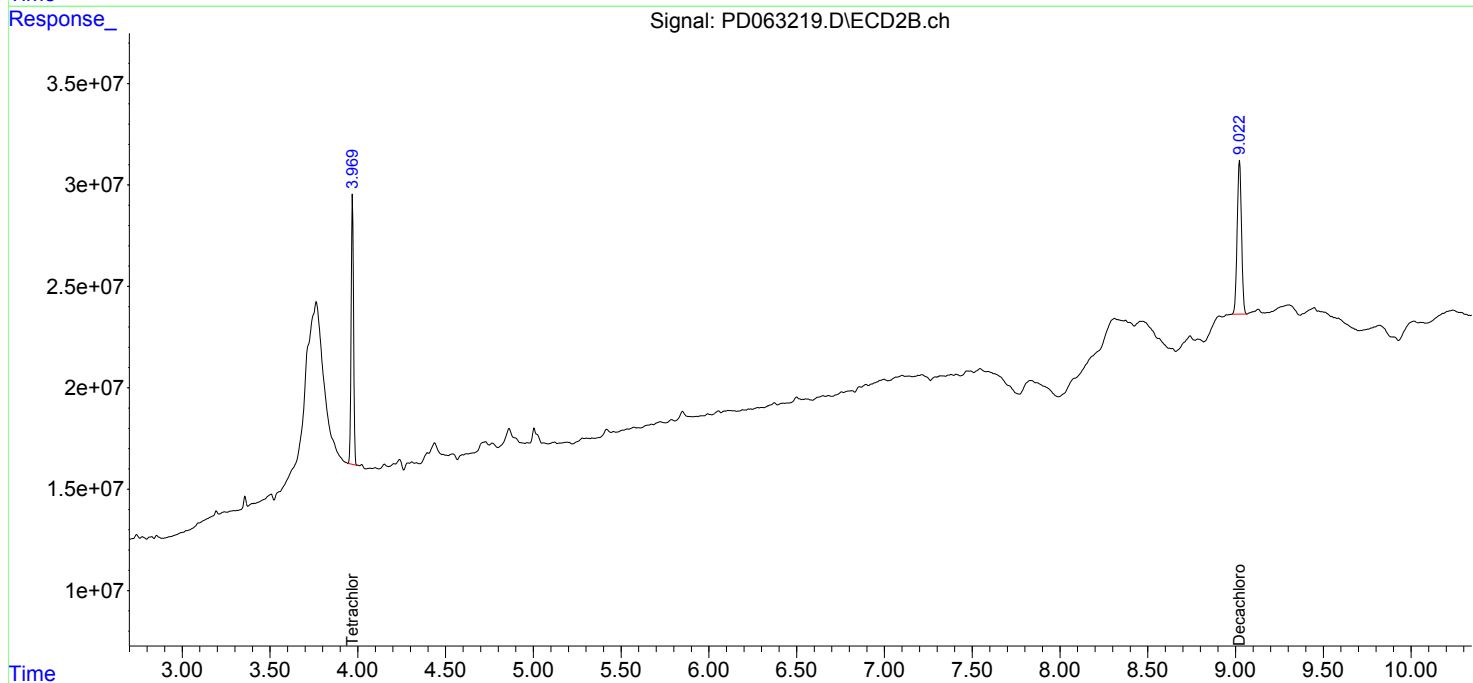
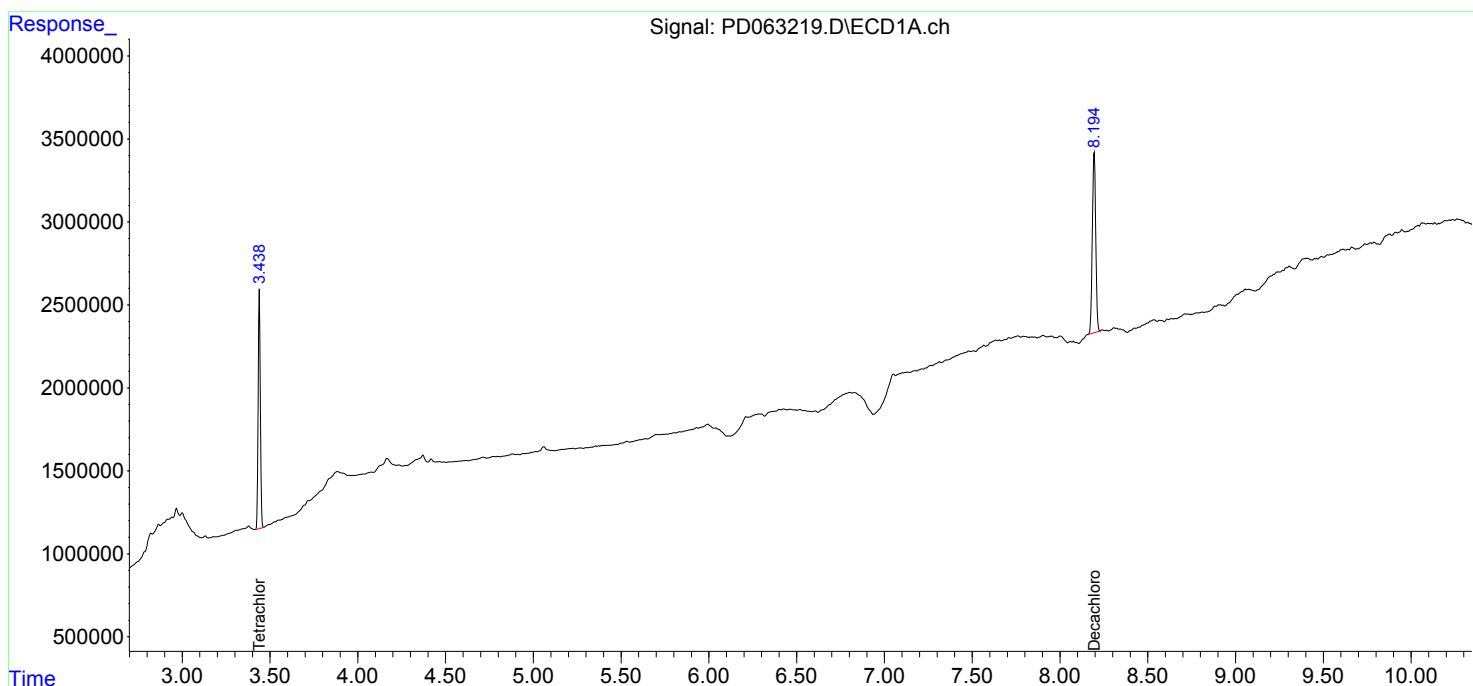
(f)=RT Delta > 1/2 Window (#)=Amounts differ by > 25% (m)=manual int.

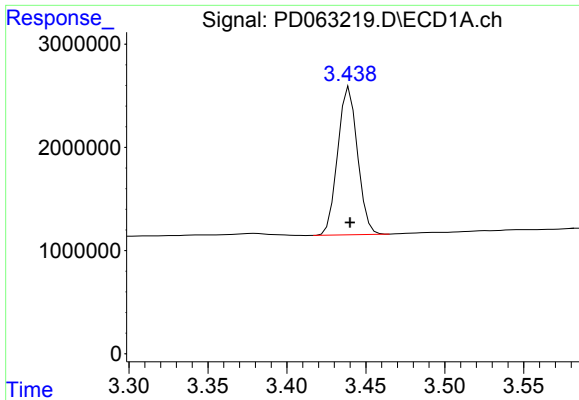
Data Path : Z:\pestpcbsrv\HPCHEM1\ECD_D\Data\PD052221\
 Data File : PD063219.D
 Signal(s) : Signal #1: ECD1A.ch Signal #2: ECD2B.ch
 Acq On : 21 May 2021 17:39
 Operator : AR\AJ
 Sample : M2479-03
 Misc :
 ALS Vial : 26 Sample Multiplier: 1

Instrument :
 ECD_D
 ClientSampleId :
 GROUND-MATERIAL-1-17-D

Integration File signal 1: autoint1.e
 Integration File signal 2: autoint2.e
 Quant Time: May 22 01:03:35 2021
 Quant Method : Z:\pestpcbsrv\HPCHEM1\ECD_D\Method\PD051721.M
 Quant Title : GC Extractables
 QLast Update : Tue May 18 07:12:39 2021
 Response via : Initial Calibration
 Integrator: ChemStation

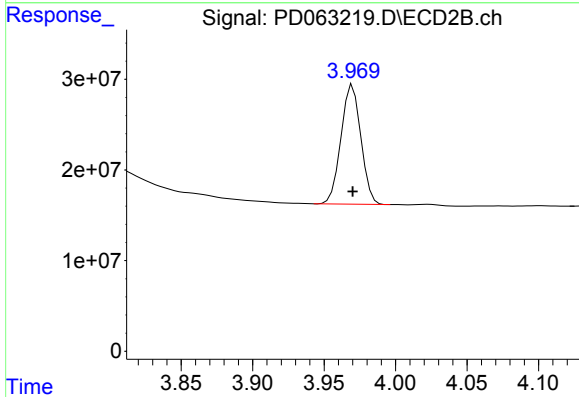
Volume Inj. : 2 µl
 Signal #1 Phase : ZB-MR2 Signal #2 Phase: ZB-MR1
 Signal #1 Info : 30M x 0.32mm x 0.2 Signal #2 Info : 30M x 0.32mm x 0.50µm



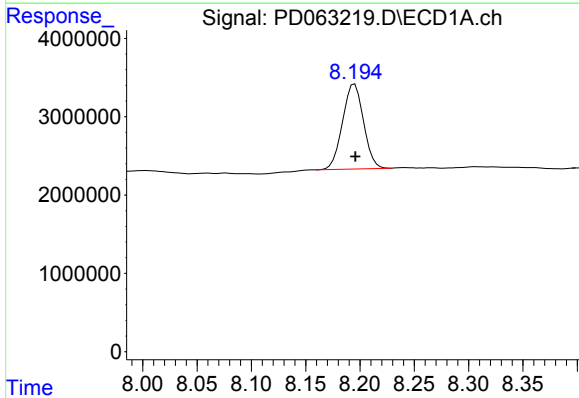


#1 Tetrachloro-m-xylene
 R.T.: 3.440 min
 Delta R.T.: 0.000 min
 Response: 12556599
 Conc: 11.40 ng/ml

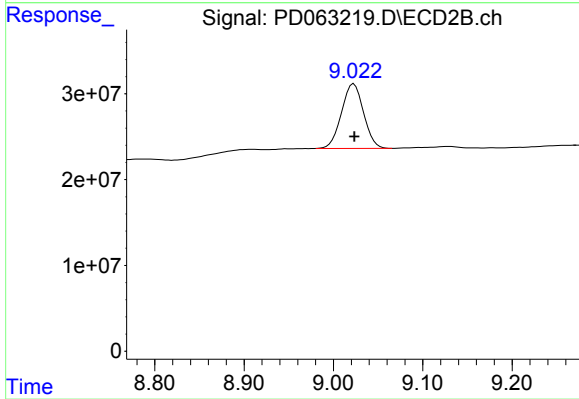
Instrument :
 ECD_D
ClientSampled :
 GROUND-MATERIAL-1-17-D



#1 Tetrachloro-m-xylene
 R.T.: 3.970 min
 Delta R.T.: 0.000 min
 Response: 127767219
 Conc: 11.03 ng/ml



#28 Decachlorobiphenyl
 R.T.: 8.195 min
 Delta R.T.: 0.000 min
 Response: 14604322
 Conc: 11.60 ng/ml



#28 Decachlorobiphenyl
 R.T.: 9.023 min
 Delta R.T.: 0.000 min
 Response: 129562432
 Conc: 12.70 ng/ml