

Data Path : Z:\pestpcbsrv\HPCHEM1\ECD_D\Data\PD052224\
 Data File : PD082936.D
 Signal(s) : Signal #1: ECD1A.ch Signal #2: ECD2B.ch
 Acq On : 20 May 2024 15:43
 Operator : AR\AJ
 Sample : P2525-01MS
 Misc :
 ALS Vial : 9 Sample Multiplier: 1

Instrument :
 ECD_D
 ClientSampleId :
 WC-MH-AAMS

Integration File signal 1: autoint1.e
 Integration File signal 2: autoint2.e
 Quant Time: May 21 01:19:54 2024
 Quant Method : Z:\pestpcbsrv\HPCHEM1\ECD_D\Method\PD051324.M
 Quant Title : GC Extractables
 QLast Update : Mon May 13 15:39:20 2024
 Response via : Initial Calibration
 Integrator: ChemStation

Volume Inj. : 1 µl
 Signal #1 Phase : ZB-MR2 Signal #2 Phase: ZB-MR2
 Signal #1 Info : 30M x 0.32mm x0.5 Signal #2 Info : 30M x 0.32mm x 0.25µm

Compound	RT#1	RT#2	Resp#1	Resp#2	ng/ml	ng/ml

System Monitoring Compounds						
1) SA Tetrachlo...	3.567	2.778	26919120	70272831	17.388	17.731
2) SA Decachlor...	9.125	7.905	29930674	59507815	14.988	15.395
Target Compounds						
2) A alpha-BHC	4.025	3.276	126.7E6	290.8E6	46.268	46.614
3) MA gamma-BHC...	4.359	3.604	121.4E6	268.7E6	45.912	45.472
4) MA Heptachlor	4.951	3.943	119.4E6	261.4E6	47.327	47.218
5) MB Aldrin	5.294	4.222	117.4E6	253.9E6	45.551	44.556
6) B beta-BHC	4.554	3.900	49701550	114.5E6	47.455	47.931
7) B delta-BHC	4.804	4.129	119.6E6	263.6E6	48.148	45.543
8) B Heptachlo...	5.722	4.723	107.8E6	229.2E6	46.212	45.506
9) A Endosulfan I	6.109	5.092	100.4E6	215.6E6	46.503	46.743
10) B gamma-Chl...	5.979	4.972	107.1E6	236.8E6	47.304	47.380
11) B alpha-Chl...	6.058	5.037	106.1E6	232.1E6	46.917	46.736
12) B 4,4'-DDE	6.231	5.224	102.0E6	222.2E6	46.613	47.610
13) MA Dieldrin	6.385	5.356	104.3E6	235.0E6	46.631	46.750
14) MA Endrin	6.617	5.631	81155707	193.5E6	43.133	44.257
15) B Endosulfa...	6.836	5.925	89520869	201.2E6	44.870	48.183
16) A 4,4'-DDD	6.750	5.778	77917425	185.0E6	48.711	49.187
17) MA 4,4'-DDT	7.065	6.028	77715755	178.4E6	46.038	46.520
18) B Endrin al...	6.966	6.103	63756343	143.4E6	45.536	45.943
19) B Endosulfa...	7.202	6.326	82337114	191.7E6	46.664	48.088
20) A Methoxychlor	7.542	6.603	39028456	89807082	42.577	44.198
21) B Endrin ke...	7.689	6.832	92184220	223.6E6	47.961	49.176
22) Mirex	8.165	7.013	68085631	168.9E6	44.420	47.280
23) Chlordane-1	0.000	3.804f	0	1853843	N.D.	10.121 #
24) Chlordane-2	5.294f	4.359	117.4E6	954766	1186.016	4.506 #
25) Chlordane-3	5.979	4.972	107.1E6	236.8E6	271.888	392.989 #
26) Chlordane-4	6.058	5.037	106.1E6	232.1E6	225.953	403.897 #
27) Chlordane-5	6.914	5.925	150940	201.2E6	1.835	997.822 #

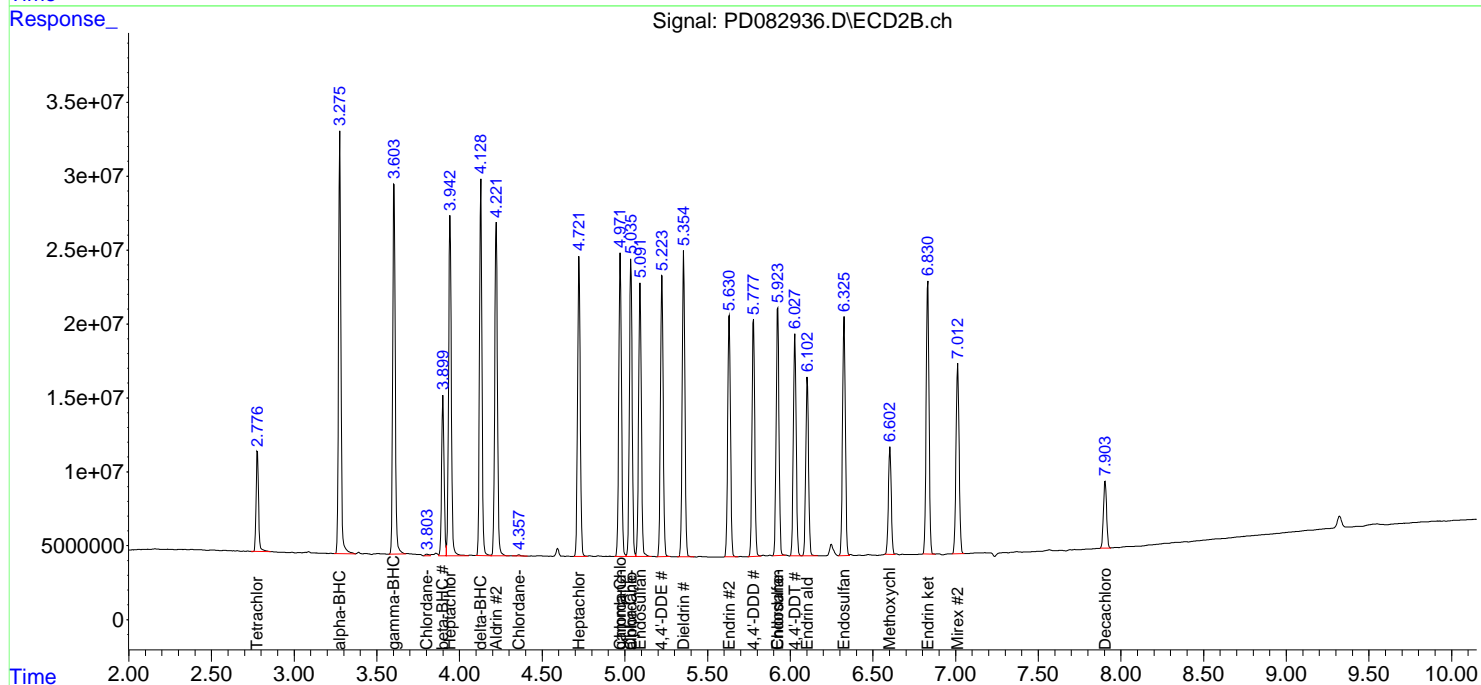
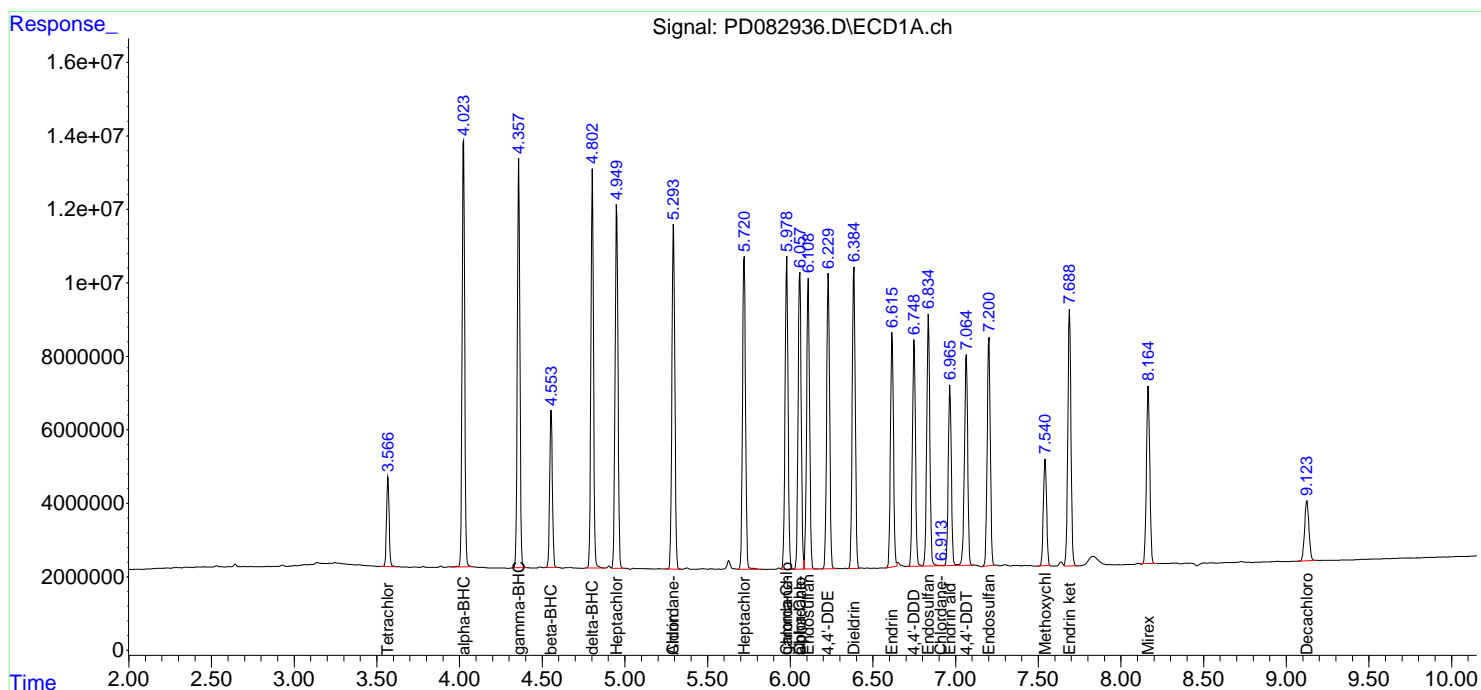
(f)=RT Delta > 1/2 Window (#)=Amounts differ by > 25% (m)=manual int.

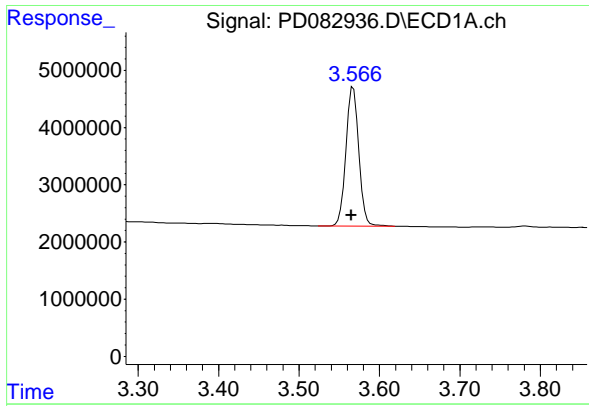
Data Path : Z:\pestpcbsrv\HPCHEM1\ECD_D\Data\PD052224\
 Data File : PD082936.D
 Signal(s) : Signal #1: ECD1A.ch Signal #2: ECD2B.ch
 Acq On : 20 May 2024 15:43
 Operator : AR\AJ
 Sample : P2525-01MS
 Misc :
 ALS Vial : 9 Sample Multiplier: 1

Instrument :
 ECD_D
 ClientSampleId :
 WC-MH-AAMS

Integration File signal 1: autoint1.e
 Integration File signal 2: autoint2.e
 Quant Time: May 21 01:19:54 2024
 Quant Method : Z:\pestpcbsrv\HPCHEM1\ECD_D\Method\PD051324.M
 Quant Title : GC Extractables
 QLast Update : Mon May 13 15:39:20 2024
 Response via : Initial Calibration
 Integrator: ChemStation

Volume Inj. : 1 µl
 Signal #1 Phase : ZB-MR1 Signal #2 Phase: ZB-MR2
 Signal #1 Info : 30M x 0.32mm x 0.5 Signal #2 Info : 30M x 0.32mm x 0.25µm

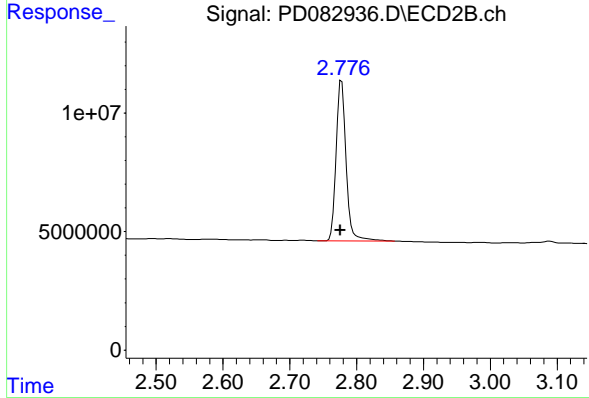




#1 Tetrachloro-m-xylene

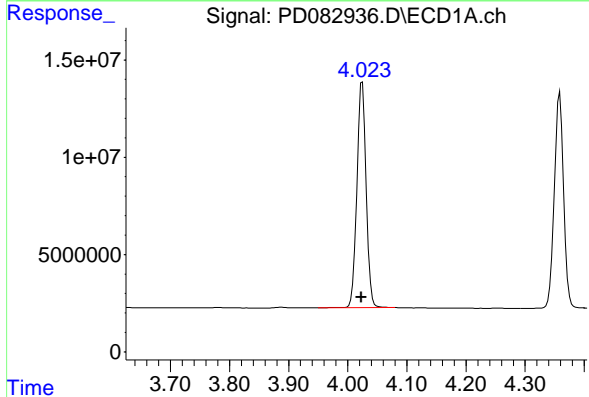
R.T.: 3.567 min
 Delta R.T.: 0.002 min
 Response: 26919120
 Conc: 17.39 ng/ml

Instrument : ECD_D
 ClientSampleId : WC-MH-AAMS



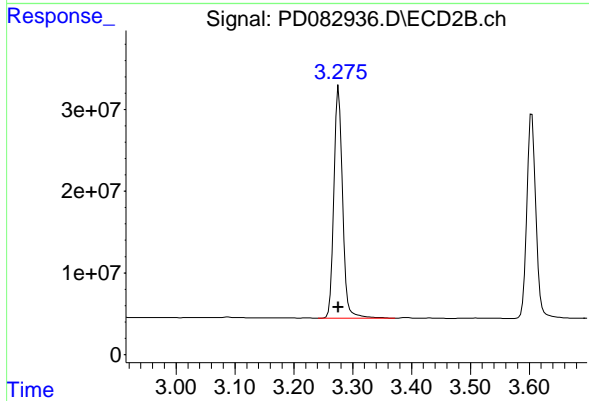
#1 Tetrachloro-m-xylene

R.T.: 2.778 min
 Delta R.T.: 0.002 min
 Response: 70272831
 Conc: 17.73 ng/ml



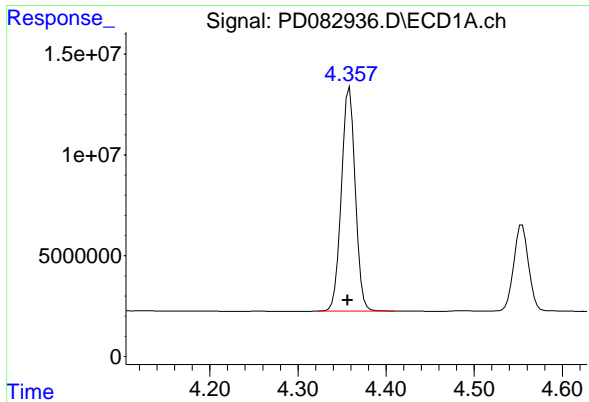
#2 alpha-BHC

R.T.: 4.025 min
 Delta R.T.: 0.002 min
 Response: 126736363
 Conc: 46.27 ng/ml



#2 alpha-BHC

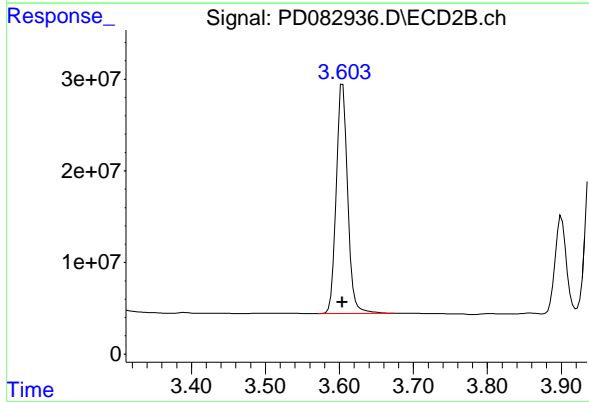
R.T.: 3.276 min
 Delta R.T.: 0.000 min
 Response: 290778199
 Conc: 46.61 ng/ml



#3 gamma-BHC (Lindane)

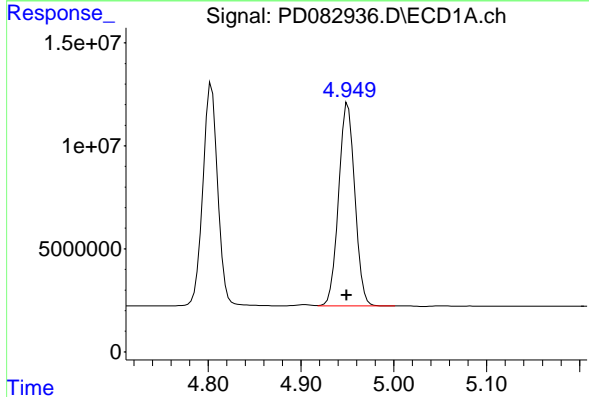
R.T.: 4.359 min
 Delta R.T.: 0.002 min
 Response: 121352982
 Conc: 45.91 ng/ml

Instrument :
 ECD_D
 ClientSampleId :
 WC-MH-AAMS



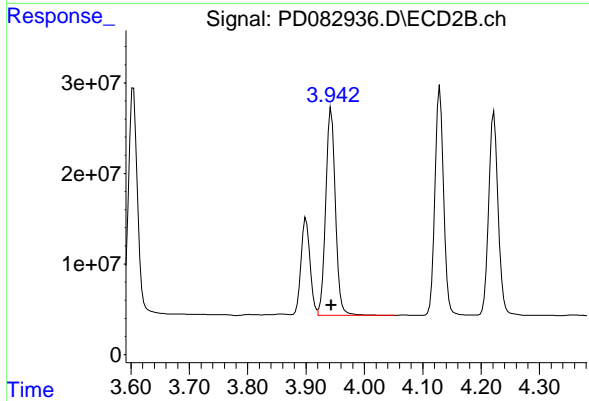
#3 gamma-BHC (Lindane)

R.T.: 3.604 min
 Delta R.T.: 0.000 min
 Response: 268742712
 Conc: 45.47 ng/ml



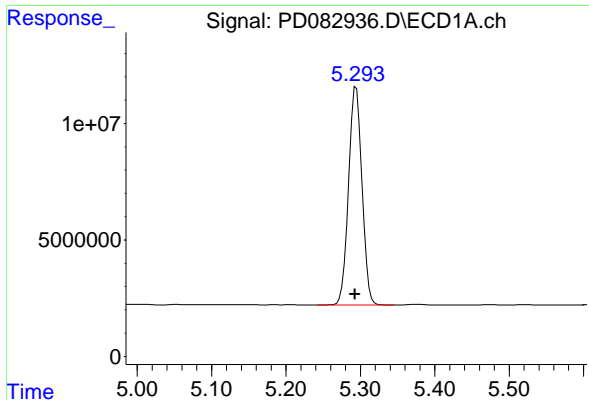
#4 Heptachlor

R.T.: 4.951 min
 Delta R.T.: 0.001 min
 Response: 119363303
 Conc: 47.33 ng/ml



#4 Heptachlor

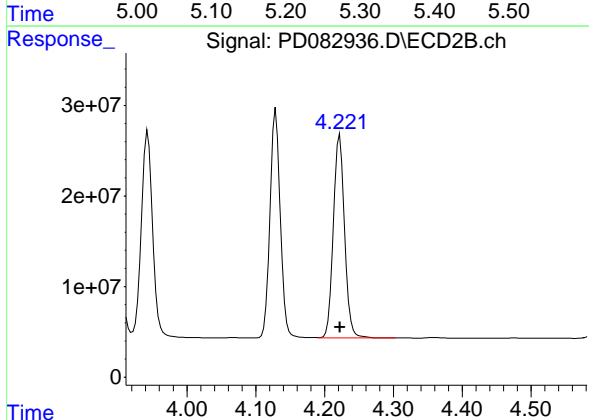
R.T.: 3.943 min
 Delta R.T.: 0.000 min
 Response: 261367437
 Conc: 47.22 ng/ml



#5 Aldrin

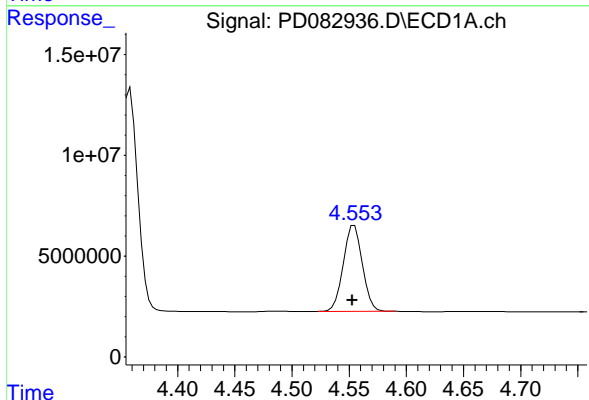
R.T.: 5.294 min
 Delta R.T.: 0.002 min
 Response: 117378740
 Conc: 45.55 ng/ml

Instrument :
 ECD_D
 ClientSampleId :
 WC-MH-AAMS



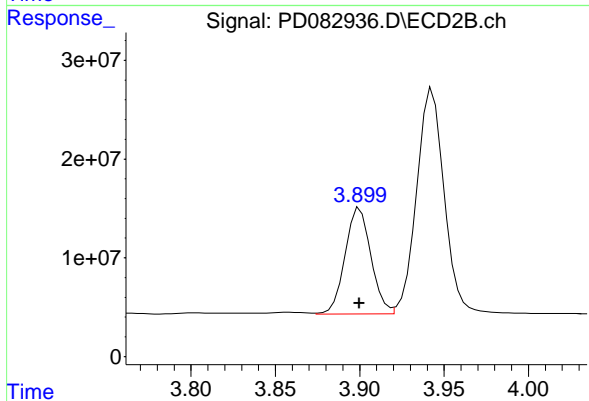
#5 Aldrin

R.T.: 4.222 min
 Delta R.T.: 0.000 min
 Response: 253901970
 Conc: 44.56 ng/ml



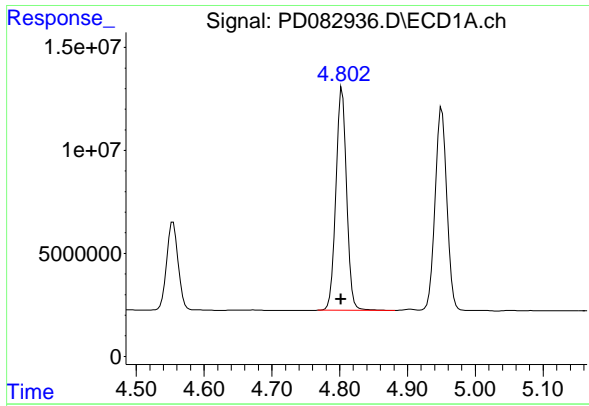
#6 beta-BHC

R.T.: 4.554 min
 Delta R.T.: 0.002 min
 Response: 49701550
 Conc: 47.46 ng/ml



#6 beta-BHC

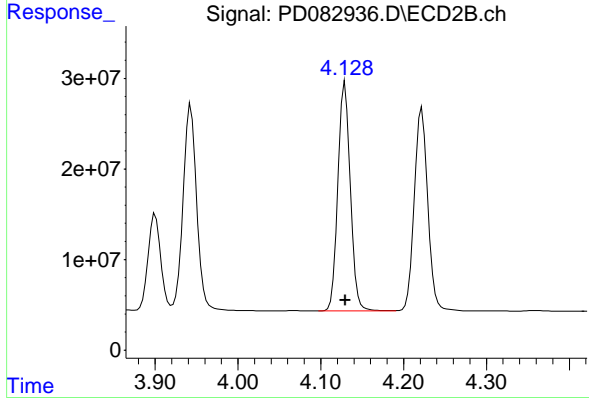
R.T.: 3.900 min
 Delta R.T.: 0.000 min
 Response: 114463802
 Conc: 47.93 ng/ml



#7 delta-BHC

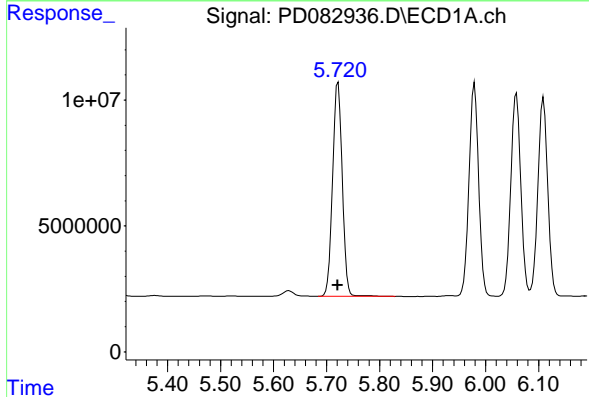
R.T.: 4.804 min
 Delta R.T.: 0.002 min
 Response: 119635301
 Conc: 48.15 ng/ml

Instrument :
 ECD_D
 ClientSampleId :
 WC-MH-AAMS



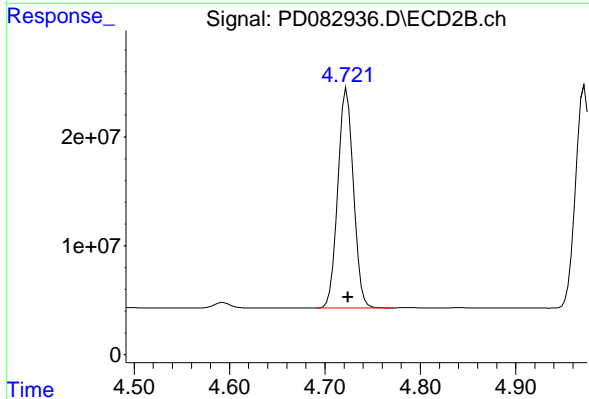
#7 delta-BHC

R.T.: 4.129 min
 Delta R.T.: 0.000 min
 Response: 263615899
 Conc: 45.54 ng/ml



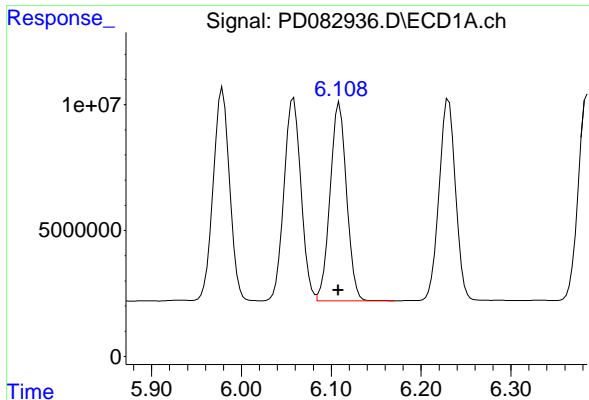
#8 Heptachlor epoxide

R.T.: 5.722 min
 Delta R.T.: 0.000 min
 Response: 107788498
 Conc: 46.21 ng/ml



#8 Heptachlor epoxide

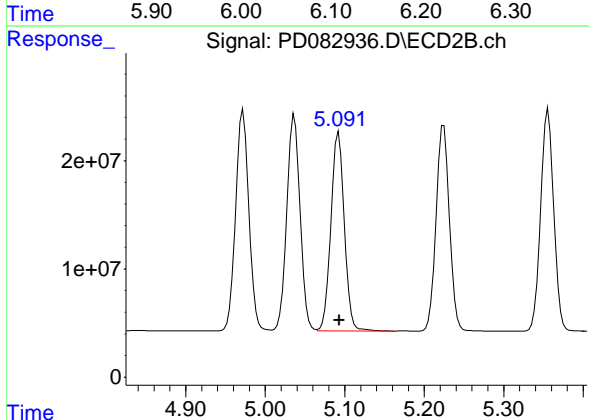
R.T.: 4.723 min
 Delta R.T.: -0.001 min
 Response: 229237200
 Conc: 45.51 ng/ml



#9 Endosulfan I

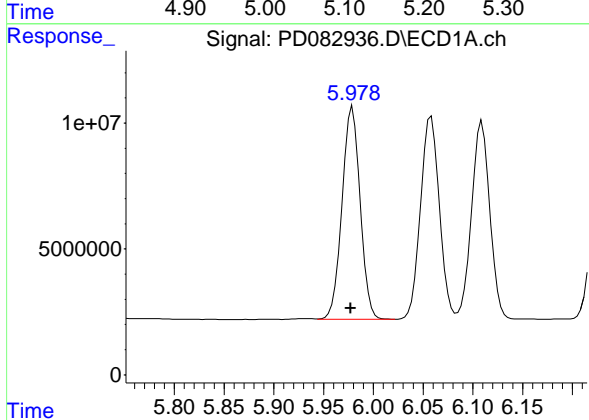
R.T.: 6.109 min
 Delta R.T.: 0.002 min
 Response: 100418776
 Conc: 46.50 ng/ml

Instrument :
 ECD_D
 ClientSampleId :
 WC-MH-AAMS



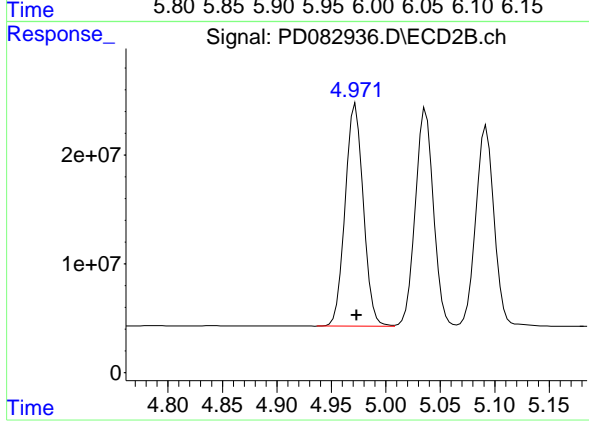
#9 Endosulfan I

R.T.: 5.092 min
 Delta R.T.: 0.000 min
 Response: 215600483
 Conc: 46.74 ng/ml



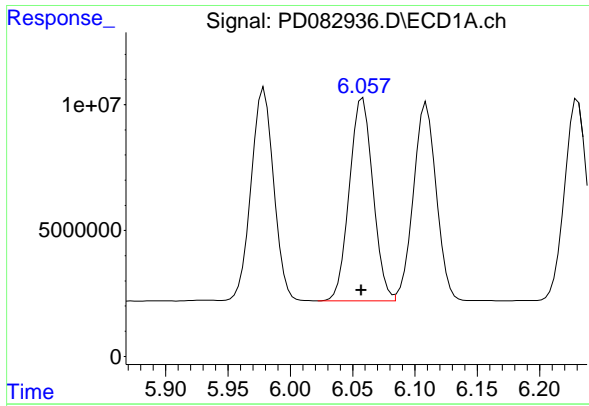
#10 gamma-Chlordane

R.T.: 5.979 min
 Delta R.T.: 0.002 min
 Response: 107138989
 Conc: 47.30 ng/ml



#10 gamma-Chlordane

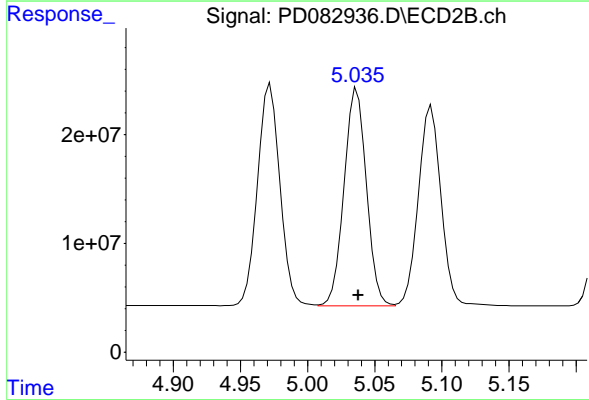
R.T.: 4.972 min
 Delta R.T.: -0.001 min
 Response: 236840998
 Conc: 47.38 ng/ml



#11 alpha-Chlordane

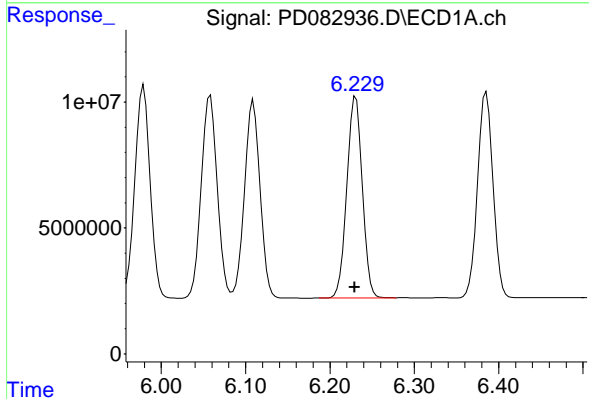
R.T.: 6.058 min
 Delta R.T.: 0.001 min
 Response: 106141139
 Conc: 46.92 ng/ml

Instrument :
 ECD_D
 ClientSampleId :
 WC-MH-AAMS



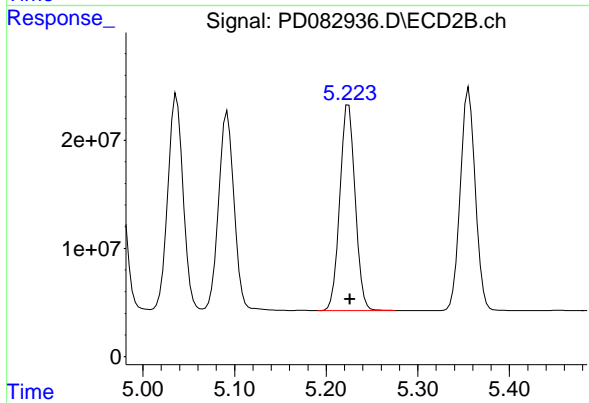
#11 alpha-Chlordane

R.T.: 5.037 min
 Delta R.T.: -0.001 min
 Response: 232091833
 Conc: 46.74 ng/ml



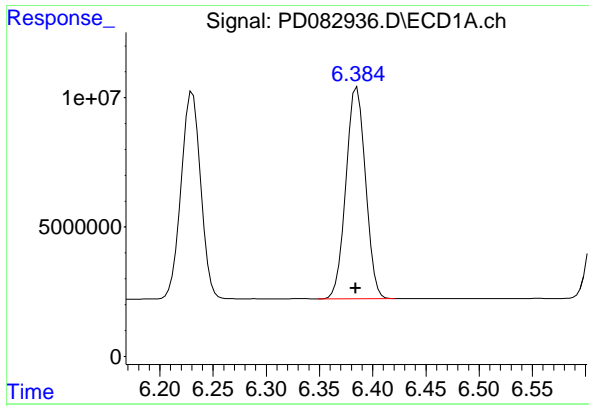
#12 4,4'-DDE

R.T.: 6.231 min
 Delta R.T.: 0.001 min
 Response: 101983953
 Conc: 46.61 ng/ml



#12 4,4'-DDE

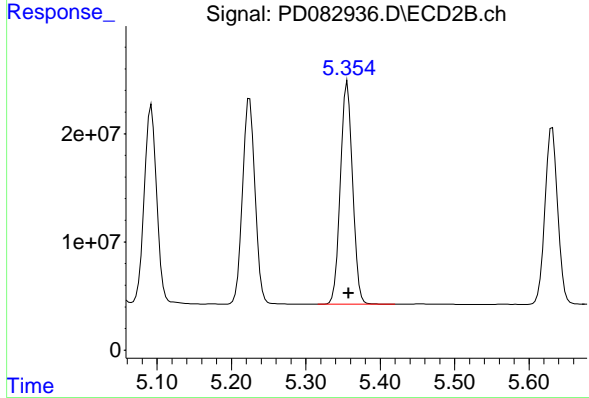
R.T.: 5.224 min
 Delta R.T.: -0.002 min
 Response: 222237354
 Conc: 47.61 ng/ml



#13 Dieldrin

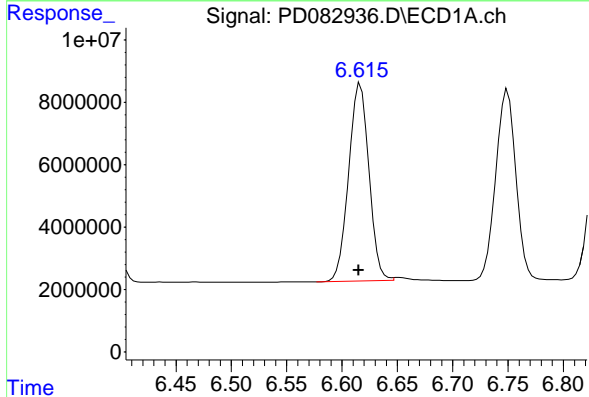
R.T.: 6.385 min
 Delta R.T.: 0.001 min
 Response: 104283138
 Conc: 46.63 ng/ml

Instrument :
 ECD_D
 ClientSampleId :
 WC-MH-AAMS



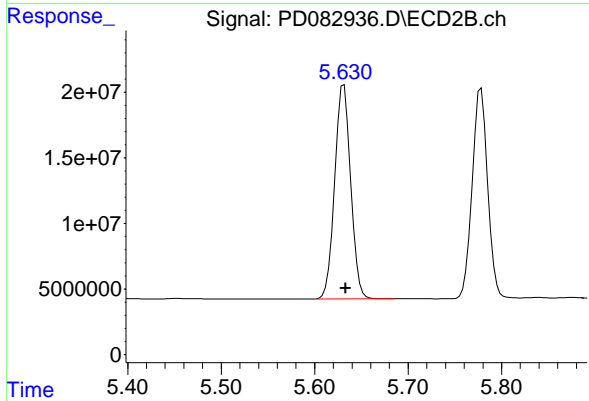
#13 Dieldrin

R.T.: 5.356 min
 Delta R.T.: -0.002 min
 Response: 234965637
 Conc: 46.75 ng/ml



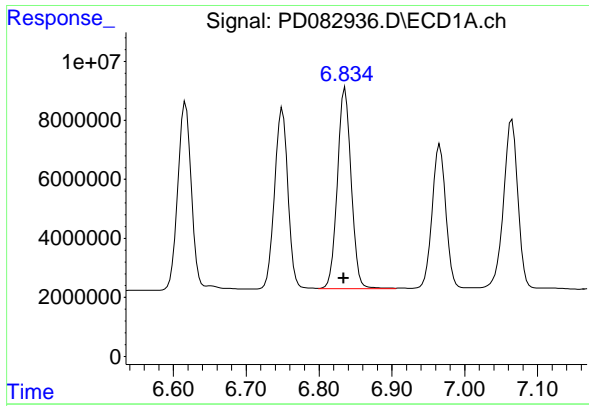
#14 Endrin

R.T.: 6.617 min
 Delta R.T.: 0.001 min
 Response: 81155707
 Conc: 43.13 ng/ml



#14 Endrin

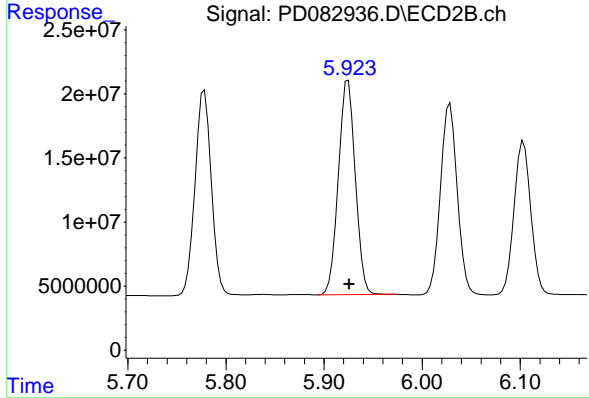
R.T.: 5.631 min
 Delta R.T.: -0.002 min
 Response: 193527696
 Conc: 44.26 ng/ml



#15 Endosulfan II

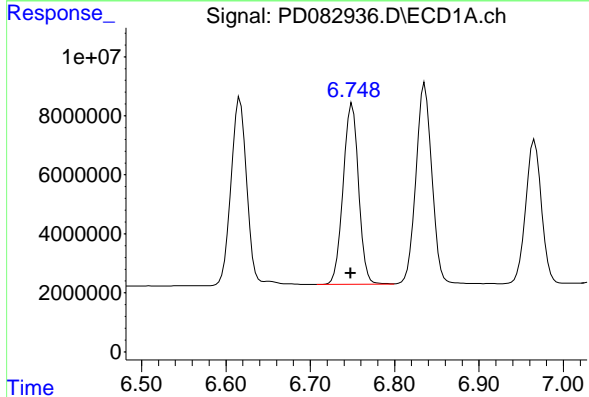
R.T.: 6.836 min
 Delta R.T.: 0.002 min
 Response: 89520869
 Conc: 44.87 ng/ml

Instrument :
 ECD_D
 ClientSampleId :
 WC-MH-AAMS



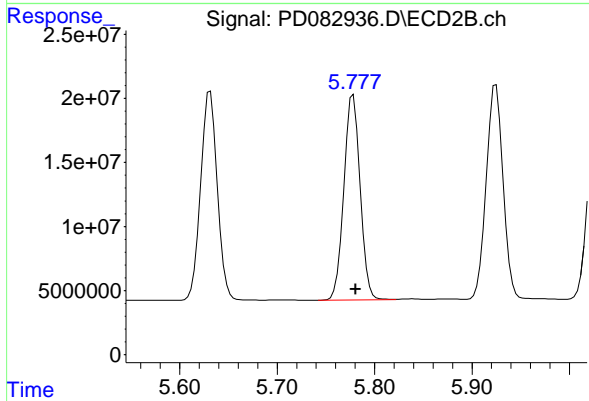
#15 Endosulfan II

R.T.: 5.925 min
 Delta R.T.: -0.001 min
 Response: 201211899
 Conc: 48.18 ng/ml



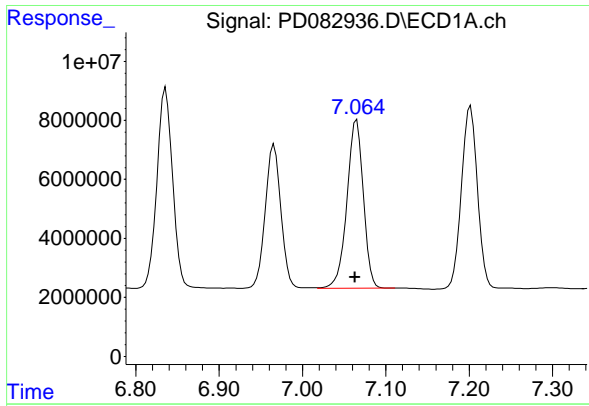
#16 4,4'-DDD

R.T.: 6.750 min
 Delta R.T.: 0.002 min
 Response: 77917425
 Conc: 48.71 ng/ml



#16 4,4'-DDD

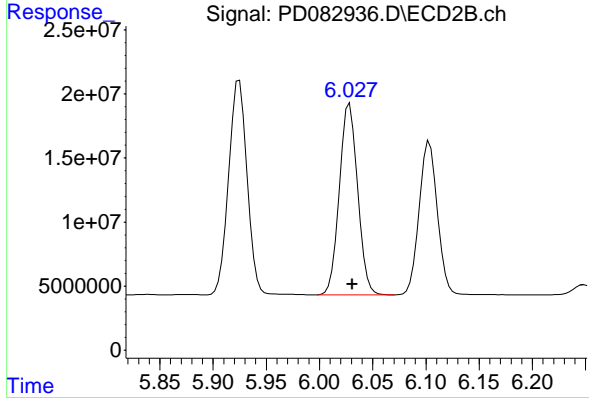
R.T.: 5.778 min
 Delta R.T.: -0.002 min
 Response: 185047769
 Conc: 49.19 ng/ml



#17 4,4'-DDT

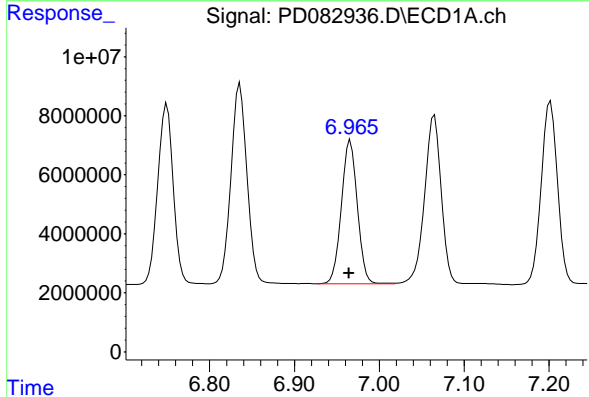
R.T.: 7.065 min
 Delta R.T.: 0.002 min
 Response: 77715755
 Conc: 46.04 ng/ml

Instrument :
 ECD_D
 ClientSampleId :
 WC-MH-AAMS



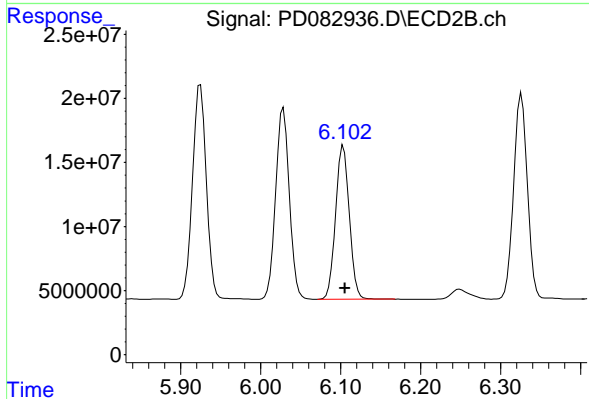
#17 4,4'-DDT

R.T.: 6.028 min
 Delta R.T.: -0.002 min
 Response: 178389175
 Conc: 46.52 ng/ml



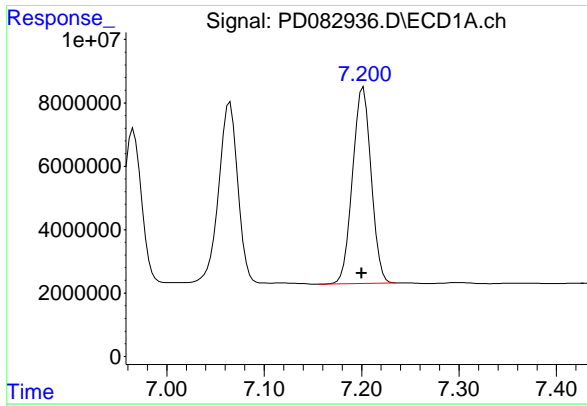
#18 Endrin aldehyde

R.T.: 6.966 min
 Delta R.T.: 0.001 min
 Response: 63756343
 Conc: 45.54 ng/ml



#18 Endrin aldehyde

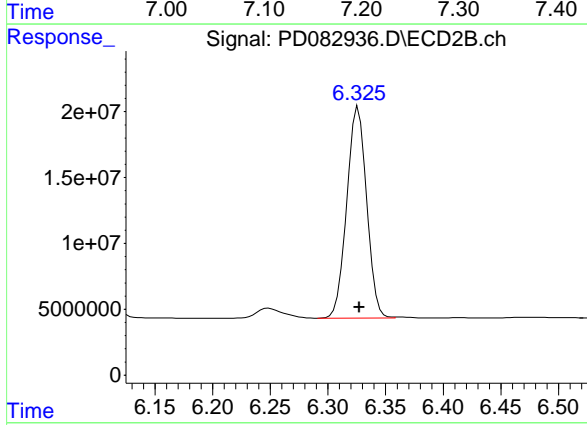
R.T.: 6.103 min
 Delta R.T.: -0.002 min
 Response: 143433556
 Conc: 45.94 ng/ml



#19 Endosulfan Sulfate

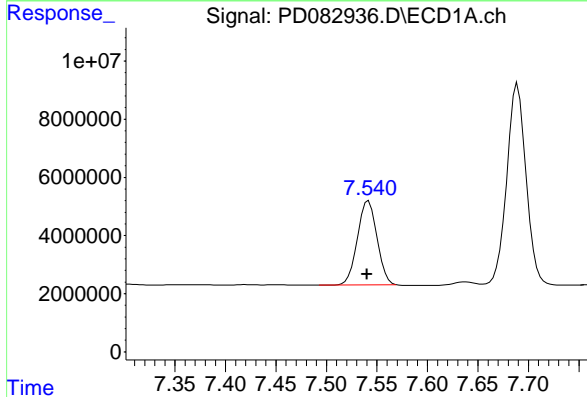
R.T.: 7.202 min
 Delta R.T.: 0.002 min
 Response: 82337114
 Conc: 46.66 ng/ml

Instrument :
 ECD_D
 ClientSampleId :
 WC-MH-AAMS



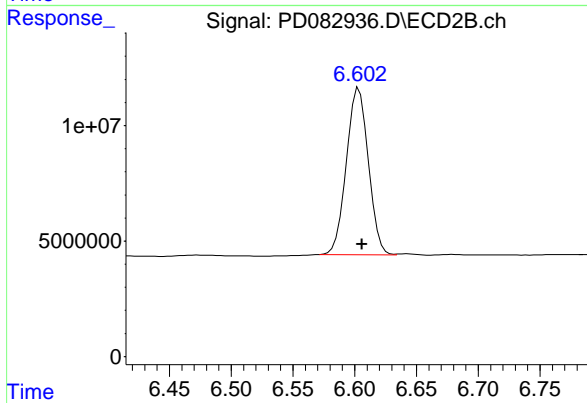
#19 Endosulfan Sulfate

R.T.: 6.326 min
 Delta R.T.: -0.001 min
 Response: 191742711
 Conc: 48.09 ng/ml



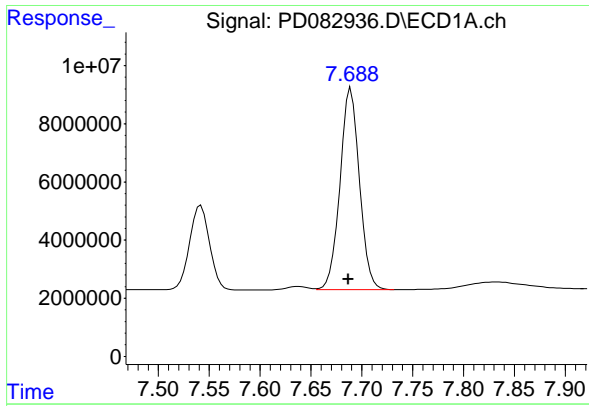
#20 Methoxychlor

R.T.: 7.542 min
 Delta R.T.: 0.001 min
 Response: 39028456
 Conc: 42.58 ng/ml



#20 Methoxychlor

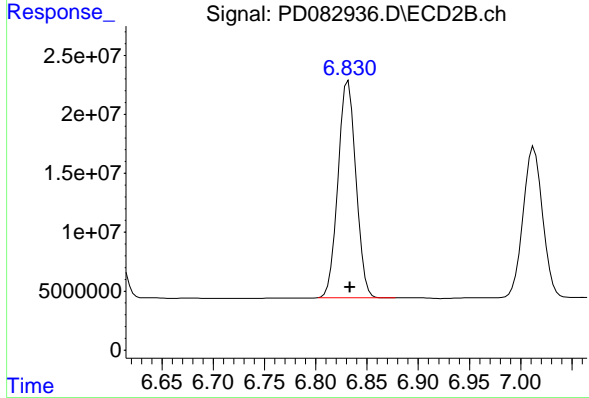
R.T.: 6.603 min
 Delta R.T.: -0.002 min
 Response: 89807082
 Conc: 44.20 ng/ml



#21 Endrin ketone

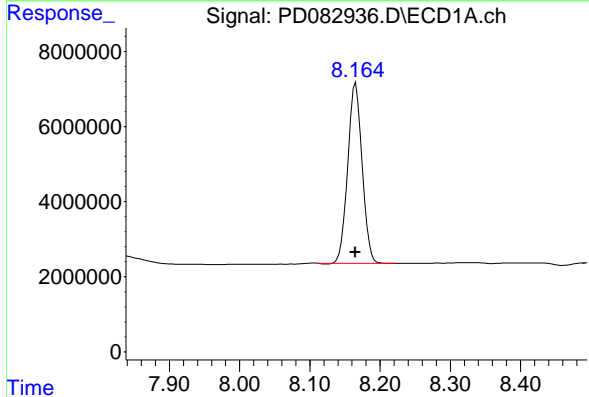
R.T.: 7.689 min
 Delta R.T.: 0.003 min
 Response: 92184220
 Conc: 47.96 ng/ml

Instrument :
 ECD_D
 ClientSampleId :
 WC-MH-AAMS



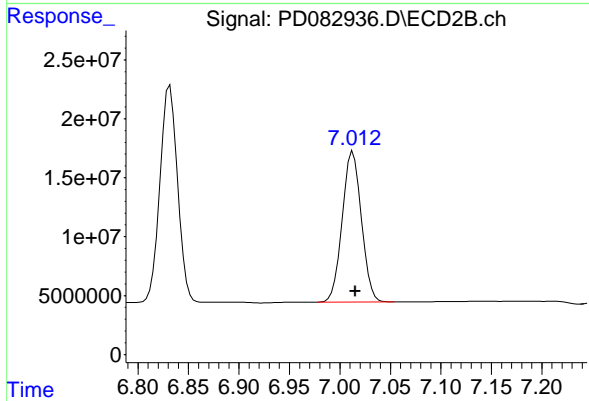
#21 Endrin ketone

R.T.: 6.832 min
 Delta R.T.: -0.002 min
 Response: 223550349
 Conc: 49.18 ng/ml



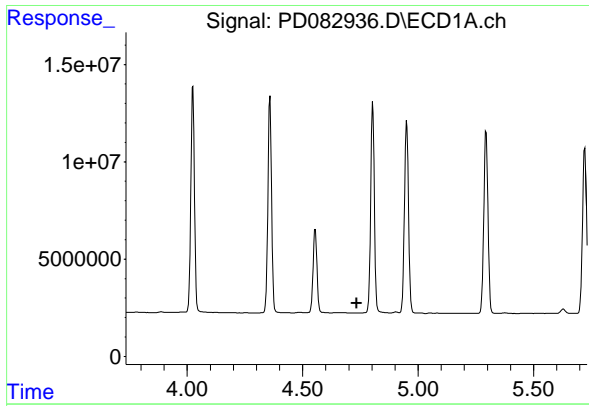
#22 Mirex

R.T.: 8.165 min
 Delta R.T.: 0.000 min
 Response: 68085631
 Conc: 44.42 ng/ml



#22 Mirex

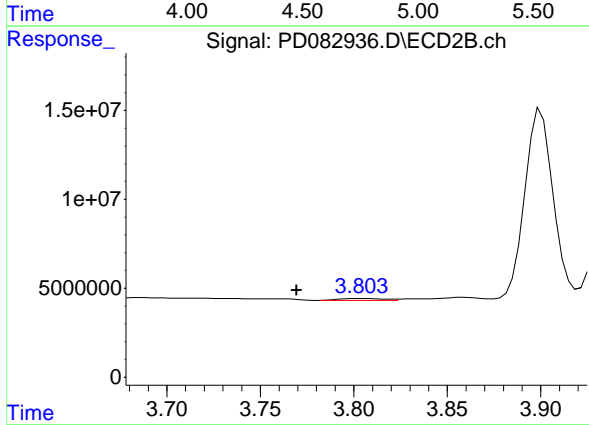
R.T.: 7.013 min
 Delta R.T.: -0.002 min
 Response: 168920015
 Conc: 47.28 ng/ml



#23 Chlordane-1

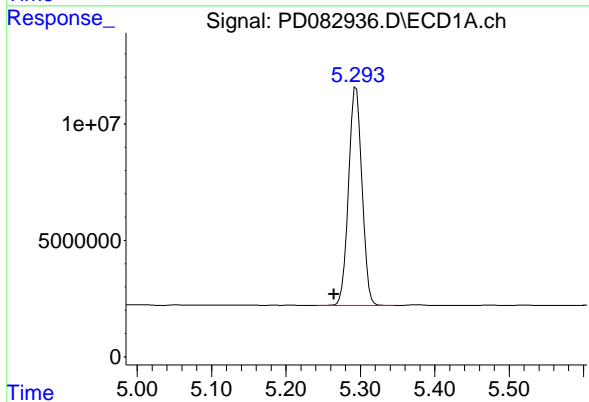
R.T.: 0.000 min
 Exp R.T.: 4.733 min
 Response: 0
 Conc: N.D.

Instrument :
 ECD_D
 ClientSampleId :
 WC-MH-AAMS



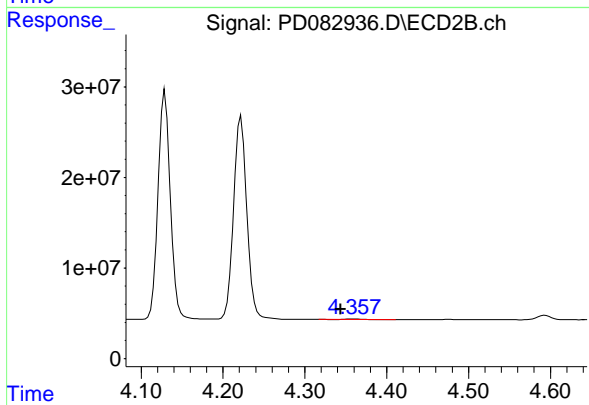
#23 Chlordane-1

R.T.: 3.804 min
 Delta R.T.: 0.035 min
 Response: 1853843
 Conc: 10.12 ng/ml



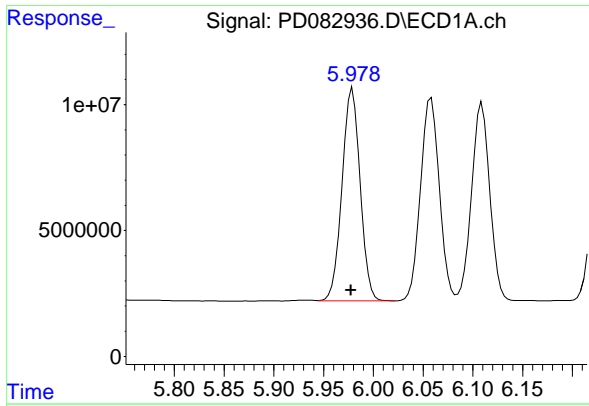
#24 Chlordane-2

R.T.: 5.294 min
 Delta R.T.: 0.030 min
 Response: 117378740
 Conc: 1186.02 ng/ml



#24 Chlordane-2

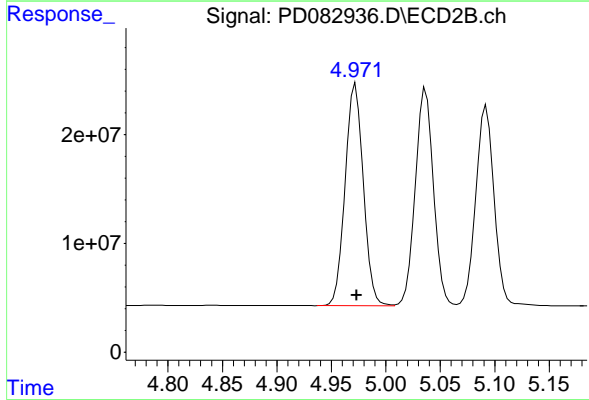
R.T.: 4.359 min
 Delta R.T.: 0.015 min
 Response: 954766
 Conc: 4.51 ng/ml



#25 Chlordane-3

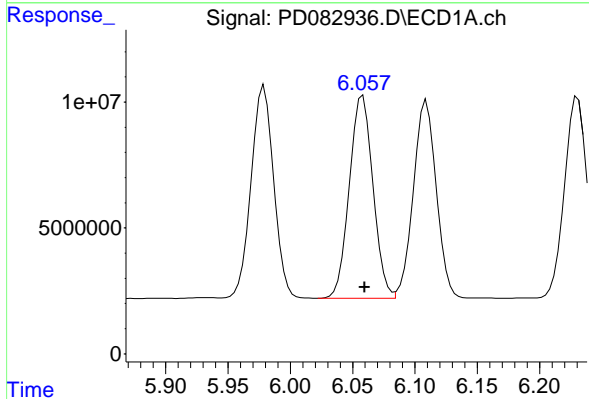
R.T.: 5.979 min
 Delta R.T.: 0.001 min
 Response: 107138989
 Conc: 271.89 ng/ml

Instrument :
 ECD_D
 ClientSampleId :
 WC-MH-AAMS



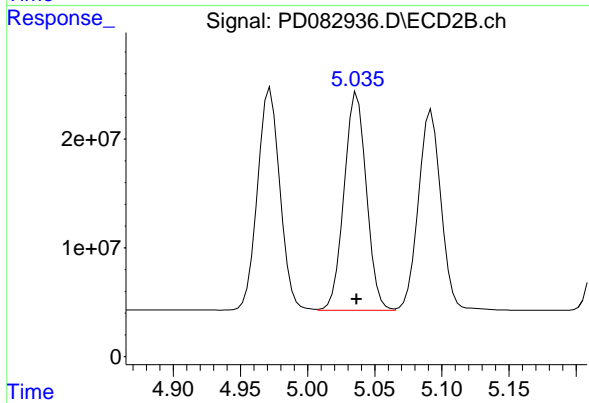
#25 Chlordane-3

R.T.: 4.972 min
 Delta R.T.: -0.001 min
 Response: 236840998
 Conc: 392.99 ng/ml



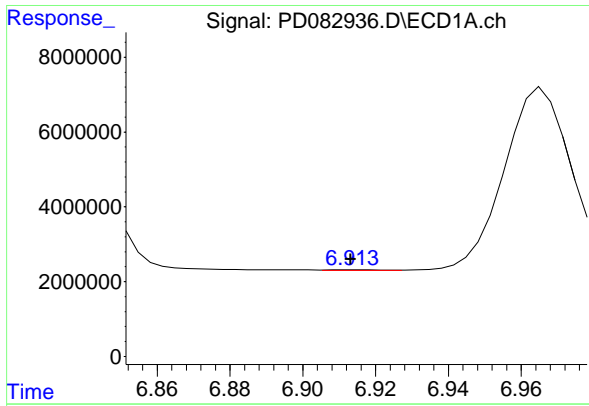
#26 Chlordane-4

R.T.: 6.058 min
 Delta R.T.: -0.002 min
 Response: 106141139
 Conc: 225.95 ng/ml



#26 Chlordane-4

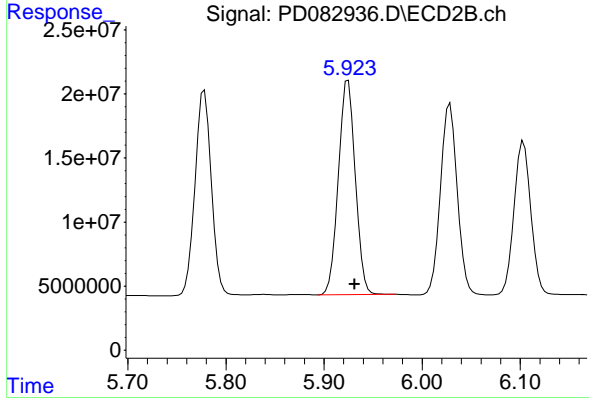
R.T.: 5.037 min
 Delta R.T.: 0.000 min
 Response: 232091833
 Conc: 403.90 ng/ml



#27 Chlordane-5

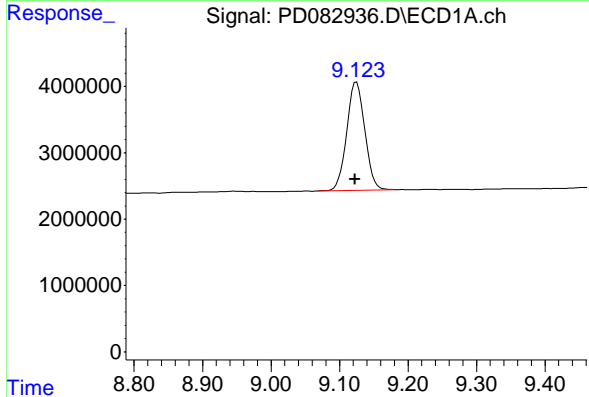
R.T.: 6.914 min
 Delta R.T.: 0.001 min
 Response: 150940
 Conc: 1.83 ng/ml

Instrument :
 ECD_D
 ClientSampleId :
 WC-MH-AAMS



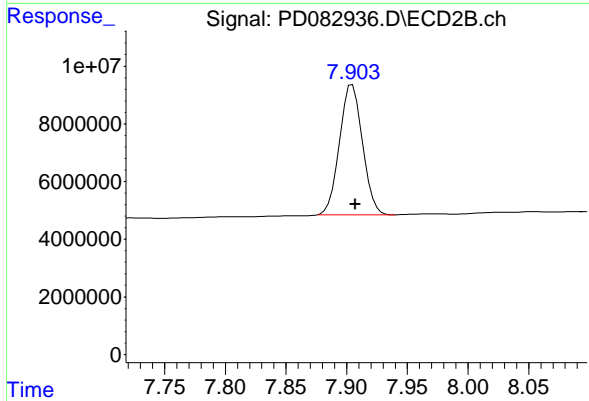
#27 Chlordane-5

R.T.: 5.925 min
 Delta R.T.: -0.007 min
 Response: 201211899
 Conc: 997.82 ng/ml



#28 Decachlorobiphenyl

R.T.: 9.125 min
 Delta R.T.: 0.002 min
 Response: 29930674
 Conc: 14.99 ng/ml



#28 Decachlorobiphenyl

R.T.: 7.905 min
 Delta R.T.: -0.002 min
 Response: 59507815
 Conc: 15.40 ng/ml