

Data Path : Z:\pestpcbsrv\HPCHEM1\ECD_D\Data\PD052419\
 Data File : PD053350.D
 Signal(s) : Signal #1: ECD1A.CH Signal #2: ECD2B.CH
 Acq On : 24 May 2019 9:24
 Operator : SM\AJ
 Sample : PB119962BL
 Misc :
 ALS Vial : 5 Sample Multiplier: 1

Instrument :
 ECD_D
 ClientSampleId :
 PBLK62

Integration File signal 1: autoint1.e
 Integration File signal 2: autoint2.e
 Quant Time: May 25 00:43:32 2019
 Quant Method : Z:\pestpcbsrv\HPCHEM1\ECD_D\Method\PD052119CLP.M
 Quant Title : GC Extractables
 QLast Update : Wed May 22 06:53:42 2019
 Response via : Initial Calibration
 Integrator: ChemStation 6890 Scale Mode: Large solvent peaks clipped

Volume Inj. : 1 µl
 Signal #1 Phase : ZB-MR2 Signal #2 Phase: ZB-MR1
 Signal #1 Info : 30M x 0.32mm x0.2 Signal #2 Info : 30M x 0.32mm x 0.50µm

Compound	RT#1	RT#2	Resp#1	Resp#2	ng/ml	ng/ml

System Monitoring Compounds						
1) SA Tetrachlo...	3.317	3.985	16292544	24445885	22.236	24.829
27) SA Decachlor...	8.017	9.030	24552774	40432249	37.117	39.142

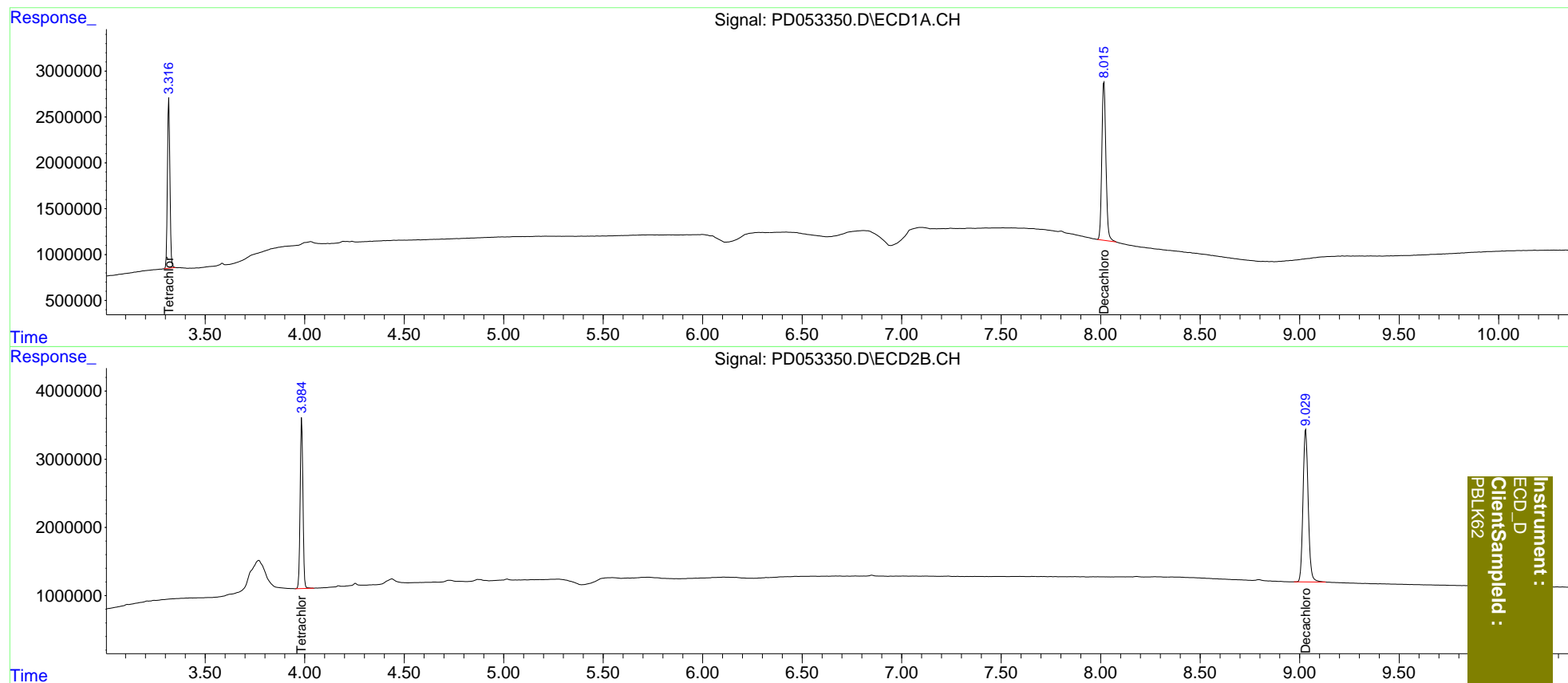
Target Compounds

(f)=RT Delta > 1/2 Window (#)=Amounts differ by > 25% (m)=manual int.

Data Path : Z:\pestpcbsrv\HPCHEM1\ECD_D\Data\PD052419\
 Data File : PD053350.D
 Signal(s) : Signal #1: ECD1A.CH Signal #2: ECD2B.CH
 Acq On : 24 May 2019 9:24
 Operator : SM\AJ
 Sample : PB119962BL
 Misc :
 ALS Vial : 5 Sample Multiplier: 1

Integration File signal 1: autoint1.e
 Integration File signal 2: autoint2.e
 Quant Time: May 25 00:43:32 2019
 Quant Method : Z:\pestpcbsrv\HPCHEM1\ECD_D\Method\PD052119CLP.M
 Quant Title : GC Extractables
 QLast Update : Wed May 22 06:53:42 2019
 Response via : Initial Calibration
 Integrator: ChemStation 6890 Scale Mode: Large solvent peaks clipped

Volume Inj. : 1 µl
 Signal #1 Phase : ZB-MR2 Signal #2 Phase: ZB-MR1
 Signal #1 Info : 30M x 0.32mm x 0.2 Signal #2 Info : 30M x 0.32mm x 0.50µm



Instrument :
 ECD_D
 ClientSampleId :
 PBLK62