

Data Path : Z:\pestpcbsrv\HPCHEM1\ECD_D\Data\PD052422\
 Data File : PD069791.D
 Signal(s) : Signal #1: ECD1A.ch Signal #2: ECD2B.ch
 Acq On : 23 May 2022 18:27
 Operator : AR\AJ
 Sample : N2936-01
 Misc :
 ALS Vial : 5 Sample Multiplier: 1

Instrument :
 ECD_D
ClientSampleId :
 SEMI-ANNUAL-CONDENSATE

Manual Integrations
APPROVED

Reviewed By :Abdul Mirza 05/25/2022
 Supervised By :Ankita Jodhani 05/25/2022

Integration File signal 1: autoint1.e
 Integration File signal 2: autoint2.e
 Quant Time: May 24 02:38:11 2022
 Quant Method : Z:\pestpcbsrv\HPCHEM1\ECD_D\Method\PD052022.M
 Quant Title : GC Extractables
 QLast Update : Mon May 23 02:08:05 2022
 Response via : Initial Calibration
 Integrator: ChemStation

Volume Inj. : 2 µl
 Signal #1 Phase : ZB-MR2 Signal #2 Phase: ZB-MR1
 Signal #1 Info : 30M x 0.32mm x0.2 Signal #2 Info : 30M x 0.32mm x 0.50µm

Compound	RT#1	RT#2	Resp#1	Resp#2	ng/ml	ng/ml

System Monitoring Compounds						
1) SA Tetrachlo...	3.438	4.165	4078560	83206538	4.070m	8.709m#
28) SA Decachlor...	8.190	9.364	7047828	73145389	6.534m	12.205m#

Target Compounds

(f)=RT Delta > 1/2 Window (#)=Amounts differ by > 25% (m)=manual int.

Data Path : Z:\pestpcbsrv\HPCHEM1\ECD_D\Data\PD052422\
 Data File : PD069791.D
 Signal(s) : Signal #1: ECD1A.ch Signal #2: ECD2B.ch
 Acq On : 23 May 2022 18:27
 Operator : AR\AJ
 Sample : N2936-01
 Misc :
 ALS Vial : 5 Sample Multiplier: 1

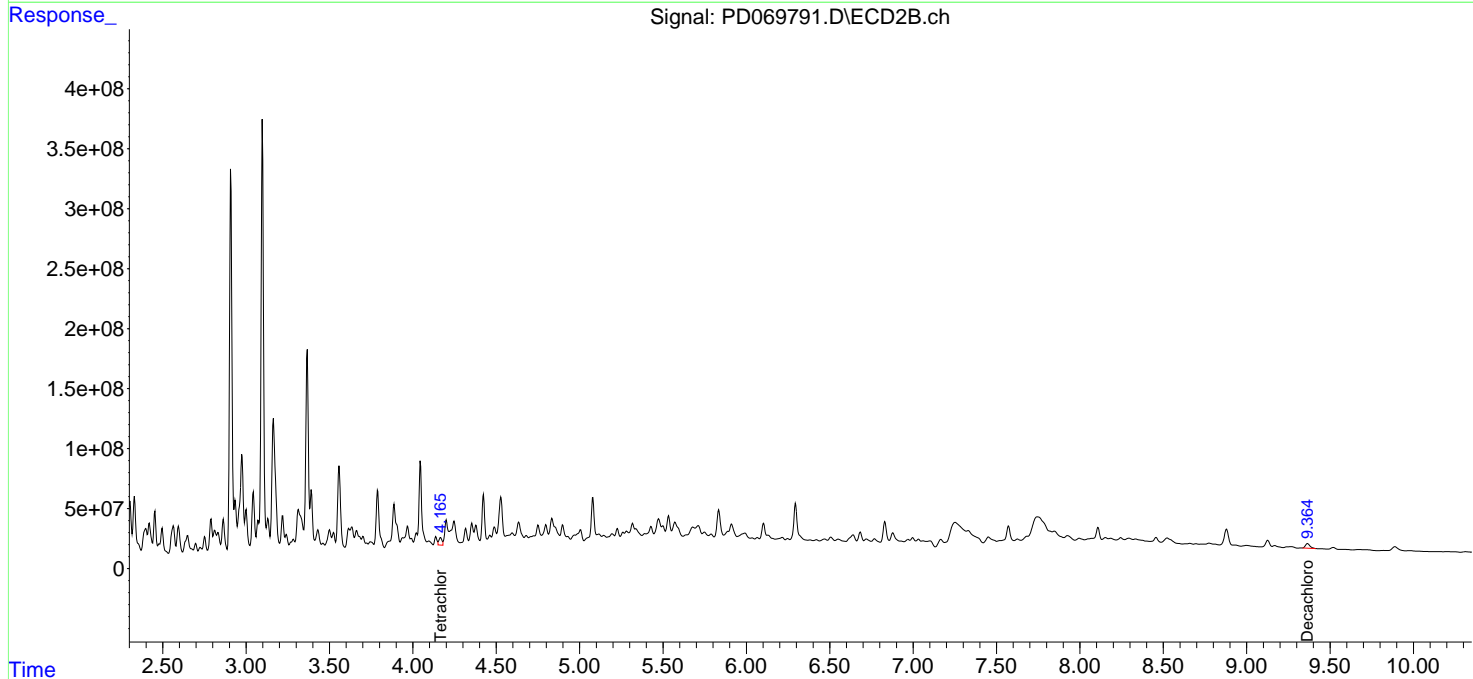
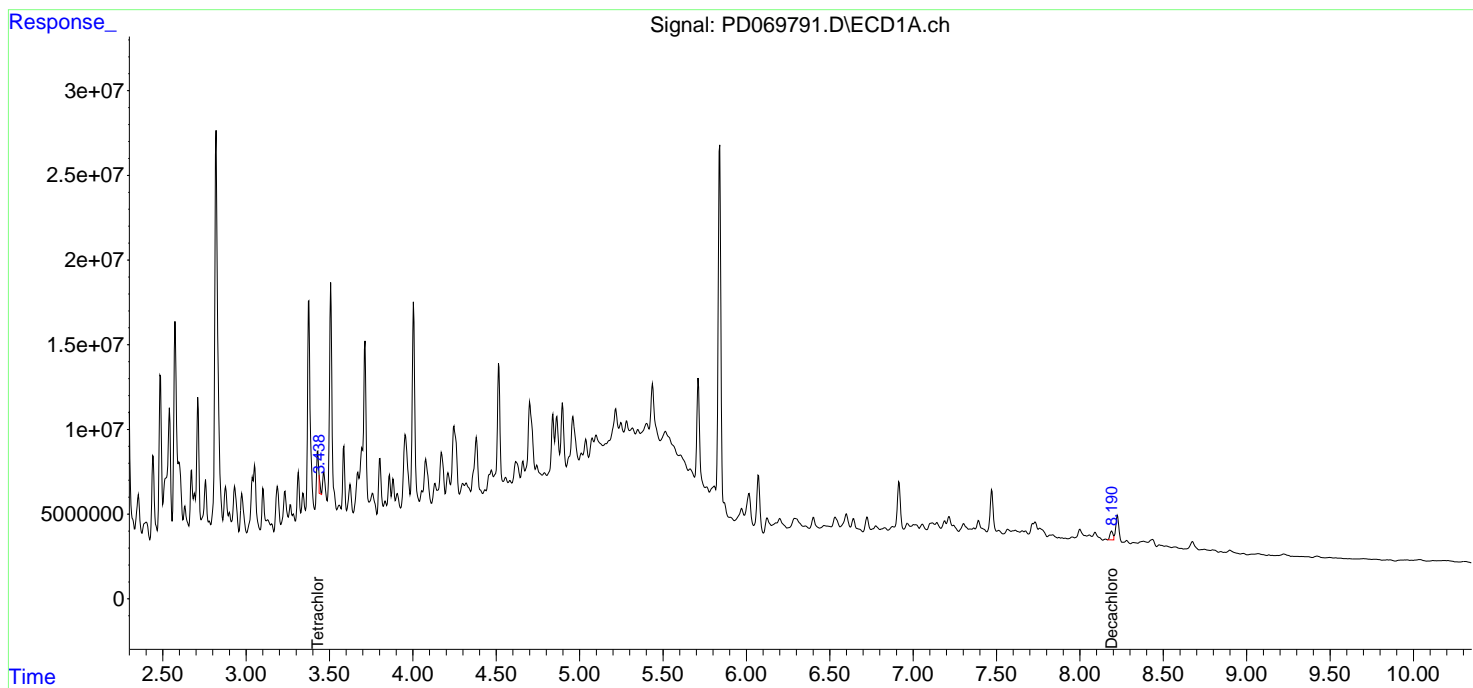
Instrument :
 ECD_D
 ClientSampleId :
 SEMI-ANNUAL-CONDENSATE

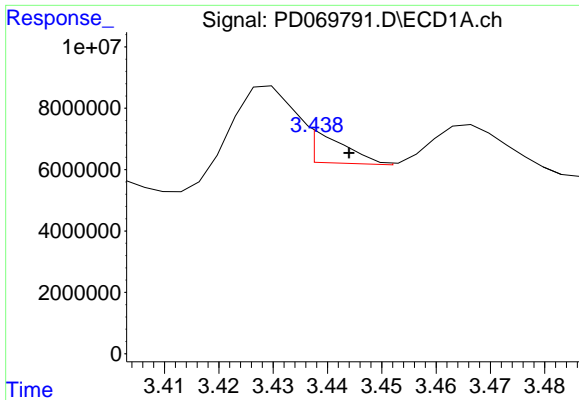
Manual Integrations
 APPROVED

Reviewed By :Abdul Mirza 05/25/2022
 Supervised By :Ankita Jodhani 05/25/2022

Integration File signal 1: autoint1.e
 Integration File signal 2: autoint2.e
 Quant Time: May 24 02:38:11 2022
 Quant Method : Z:\pestpcbsrv\HPCHEM1\ECD_D\Method\PD052022.M
 Quant Title : GC Extractables
 QLast Update : Mon May 23 02:08:05 2022
 Response via : Initial Calibration
 Integrator: ChemStation

Volume Inj. : 2 µl
 Signal #1 Phase : ZB-MR2 Signal #2 Phase: ZB-MR1
 Signal #1 Info : 30M x 0.32mm x0.2 Signal #2 Info : 30M x 0.32mm x 0.50µm

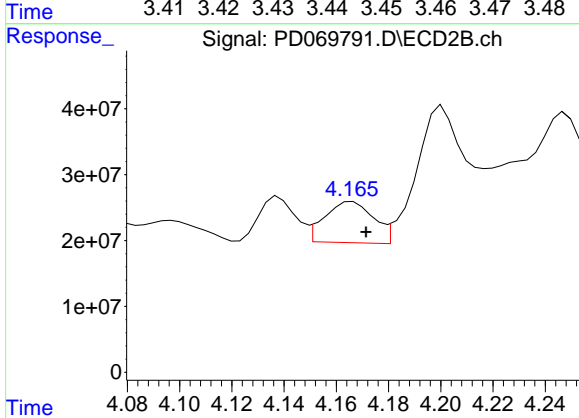




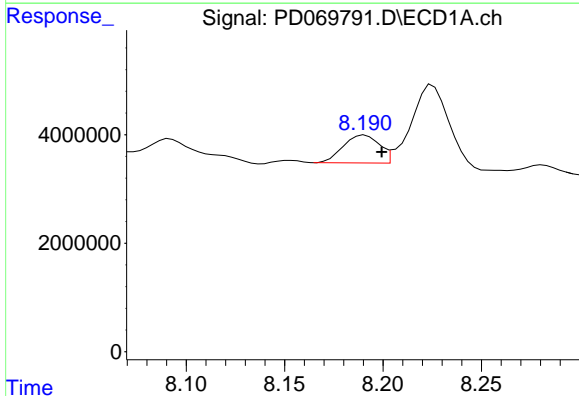
#1 Tetrachloro-m-xylene
 R.T.: 3.438 min
 Delta R.T.: -0.006 min
 Response: 4078560
 Conc: 4.07 ng/ml

Instrument : ECD_D
 Client Sample Id : SEMI-ANNUAL-CONDENSATE

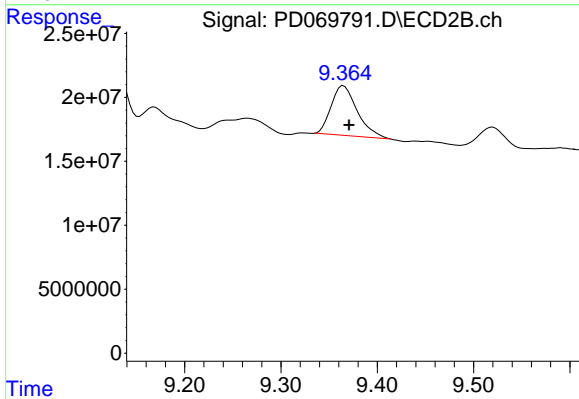
Manual Integrations
APPROVED
 Reviewed By :Abdul Mirza 05/25/2022
 Supervised By :Ankita Jodhani 05/25/2022



#1 Tetrachloro-m-xylene
 R.T.: 4.165 min
 Delta R.T.: -0.006 min
 Response: 83206538
 Conc: 8.71 ng/ml m



#28 Decachlorobiphenyl
 R.T.: 8.190 min
 Delta R.T.: -0.010 min
 Response: 7047828
 Conc: 6.53 ng/ml m



#28 Decachlorobiphenyl
 R.T.: 9.364 min
 Delta R.T.: -0.007 min
 Response: 73145389
 Conc: 12.21 ng/ml m