

Data Path : Z:\pestpcbsrv\HPCHEM1\ECD_D\Data\PD052422\
 Data File : PD069792.D
 Signal(s) : Signal #1: ECD1A.ch Signal #2: ECD2B.ch
 Acq On : 23 May 2022 18:41
 Operator : AR\AJ
 Sample : PB145000BS
 Misc :
 ALS Vial : 6 Sample Multiplier: 1

Instrument :

ECD_D

ClientSampleId :

PB145000BS

Manual Integrations

APPROVED

Reviewed By :Abdul Mirza 05/24/2022
 Supervised By :Ankita Jodhani 05/24/2022

Integration File signal 1: autoint1.e
 Integration File signal 2: autoint2.e
 Quant Time: May 24 02:38:38 2022
 Quant Method : Z:\pestpcbsrv\HPCHEM1\ECD_D\Method\PD052022.M
 Quant Title : GC Extractables
 QLast Update : Mon May 23 02:08:05 2022
 Response via : Initial Calibration
 Integrator: ChemStation

Volume Inj. : 2 µl
 Signal #1 Phase : ZB-MR2 Signal #2 Phase: ZB-MR1
 Signal #1 Info : 30M x 0.32mm x0.2 Signal #2 Info : 30M x 0.32mm x 0.50µm

Compound	RT#1	RT#2	Resp#1	Resp#2	ng/ml	ng/ml

System Monitoring Compounds						
1) SA Tetrachlo...	3.443	4.170	17576020	170.3E6	17.539	17.825
28) SA Decachlor...	8.195	9.364	17247284	116.1E6	15.990	19.376
Target Compounds						
2) A alpha-BHC	3.882	4.567	69115804	581.7E6	46.280	41.706
3) MA gamma-BHC...	4.165	4.857	70743786	513.9E6	47.915	40.128
4) MA Heptachlor	4.462	5.383	59831235	483.8E6	42.720	38.952
5) MB Aldrin	4.709	5.696	62658008	491.2E6	46.509	40.768
6) B beta-BHC	4.415	5.021	27248389	216.1E6	41.833	38.492
7) B delta-BHC	4.619	5.246	63464806	399.7E6	45.440	44.313
8) Heptachlo...	5.153	6.085	55633329	355.1E6	43.940	39.796
9) A Endosulfan I	5.491	6.447	51175669	362.5E6	43.148	36.574
10) B gamma-Chl...	5.379	6.321	55793697	439.9E6	43.620	41.098
11) B alpha-Chl...	5.437	6.396	54898954	391.9E6	43.385	37.344
12) B 4,4'-DDE	5.603	6.545	51541003	386.5E6	44.532	38.936
13) MA Dieldrin	5.735	6.705	57520318	414.9E6	46.528	40.525
14) MA Endrin	5.992	6.925	51223587	326.5E6	46.101	40.169
15) B Endosulfa...	6.266	7.131	47357912	354.6E6	45.276	43.104
16) A 4,4'-DDD	6.119	7.037	42527514	319.4E6	42.717	39.426
17) MA 4,4'-DDT	6.360	7.340	42045150	311.8E6	43.795	37.920
18) B Endrin al...	6.436	7.255	38630993	272.8E6	44.923	42.758
19) B Endosulfa...	6.648	7.481	46191257	314.0E6	41.994	39.305
20) A Methoxychlor	6.910	7.793	24811944	176.3E6	43.047	42.760
21) B Endrin ke...	7.142	7.955	50231719	347.8E6	40.097	41.635
22) Mirex	7.324	8.419	39553738	231.2E6	39.515	39.365m

(f)=RT Delta > 1/2 Window (#)=Amounts differ by > 25% (m)=manual int.

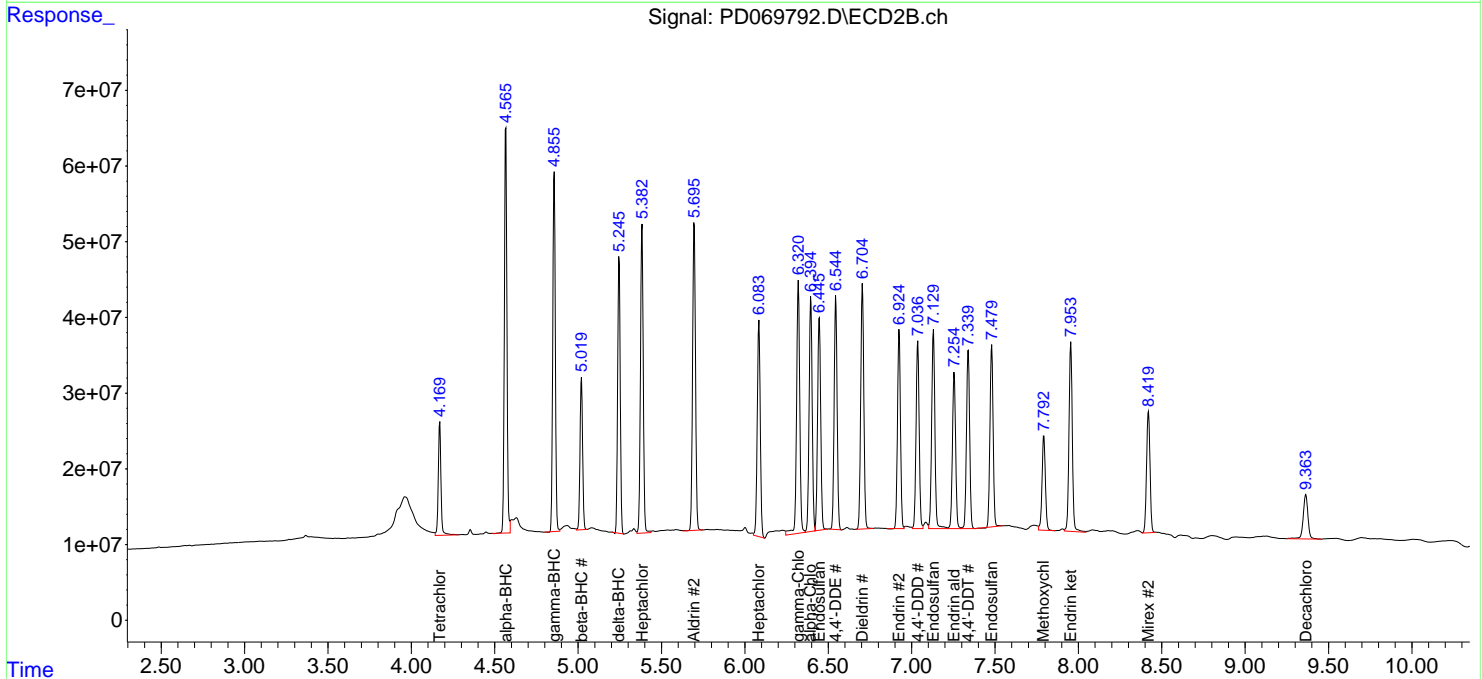
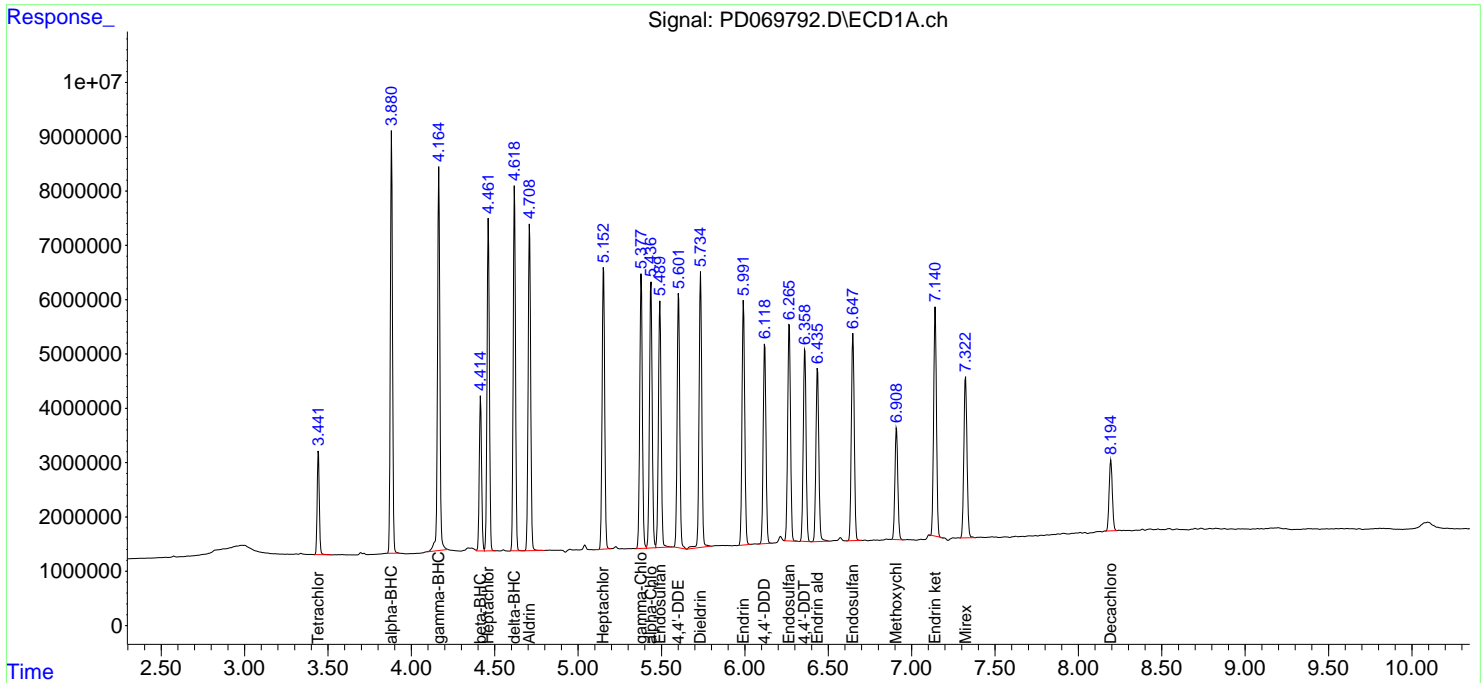
Data Path : Z:\pestpcbsrv\HPCHEM1\ECD_D\Data\PD052422\
 Data File : PD069792.D
 Signal(s) : Signal #1: ECD1A.ch Signal #2: ECD2B.ch
 Acq On : 23 May 2022 18:41
 Operator : AR\AJ
 Sample : PB145000BS
 Misc :
 ALS Vial : 6 Sample Multiplier: 1

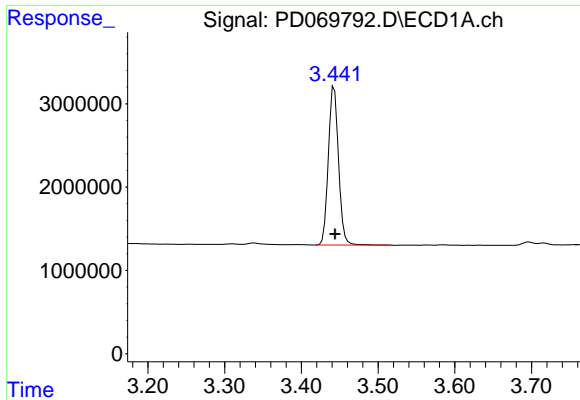
Instrument :
 ECD_D
ClientSampleId :
 PB145000BS

Manual Integrations
APPROVED
 Reviewed By :Abdul Mirza 05/24/2022
 Supervised By :Ankita Jodhani 05/24/2022

Integration File signal 1: autoint1.e
 Integration File signal 2: autoint2.e
 Quant Time: May 24 02:38:38 2022
 Quant Method : Z:\pestpcbsrv\HPCHEM1\ECD_D\Method\PD052022.M
 Quant Title : GC Extractables
 QLast Update : Mon May 23 02:08:05 2022
 Response via : Initial Calibration
 Integrator: ChemStation

Volume Inj. : 2 µl
 Signal #1 Phase : ZB-MR2 Signal #2 Phase: ZB-MR1
 Signal #1 Info : 30M x 0.32mm x0.2 Signal #2 Info : 30M x 0.32mm x 0.50µm



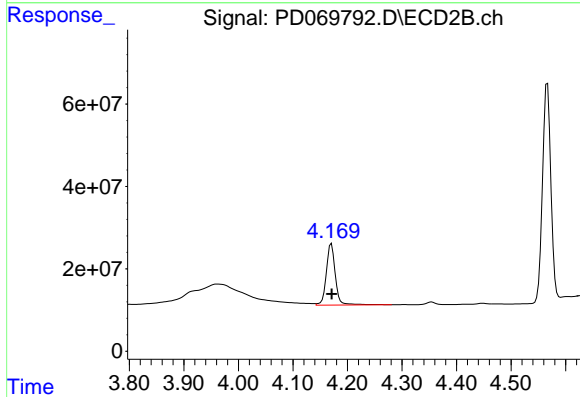


#1 Tetrachloro-m-xylene
 R.T.: 3.443 min
 Delta R.T.: -0.001 min
 Response: 17576020
 Conc: 17.54 ng/ml

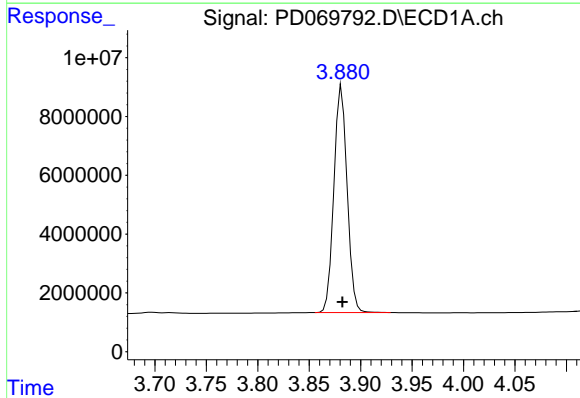
Instrument :
 ECD_D
 ClientSampleId :
 PB145000BS

Manual Integrations
APPROVED

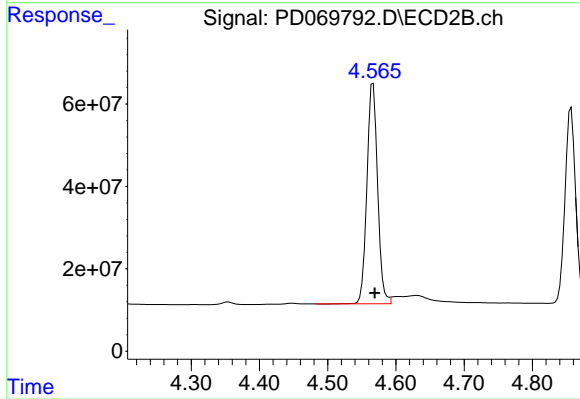
Reviewed By :Abdul Mirza 05/24/2022
 Supervised By :Ankita Jodhani 05/24/2022



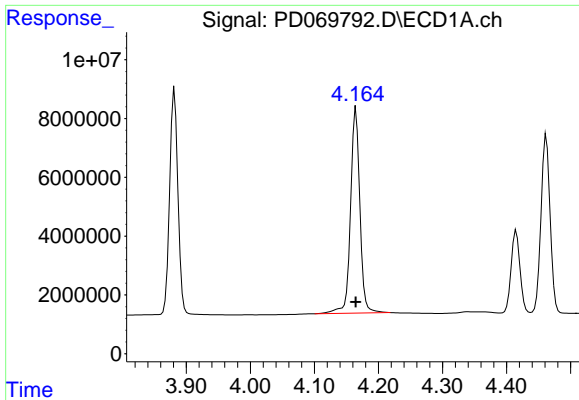
#1 Tetrachloro-m-xylene
 R.T.: 4.170 min
 Delta R.T.: 0.000 min
 Response: 170303805
 Conc: 17.83 ng/ml



#2 alpha-BHC
 R.T.: 3.882 min
 Delta R.T.: 0.000 min
 Response: 69115804
 Conc: 46.28 ng/ml



#2 alpha-BHC
 R.T.: 4.567 min
 Delta R.T.: -0.003 min
 Response: 581711859
 Conc: 41.71 ng/ml

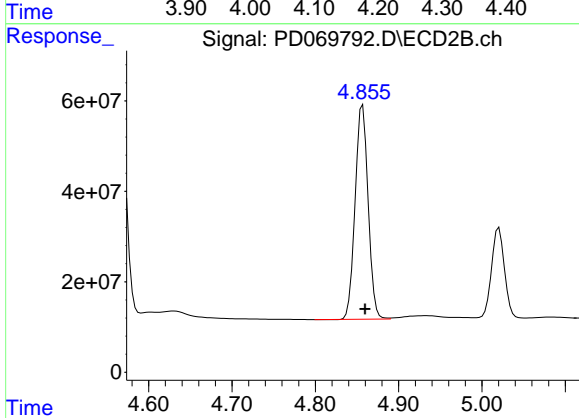


#3 gamma-BHC (Lindane)
 R.T.: 4.165 min
 Delta R.T.: 0.000 min
 Response: 70743786
 Conc: 47.92 ng/ml

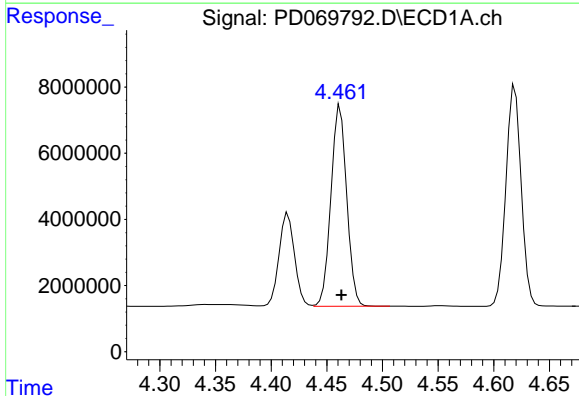
Instrument :
 ECD_D
 ClientSampleId :
 PB145000BS

Manual Integrations
APPROVED

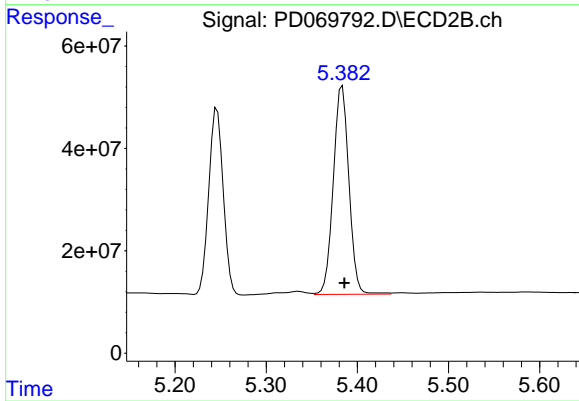
Reviewed By :Abdul Mirza 05/24/2022
 Supervised By :Ankita Jodhani 05/24/2022



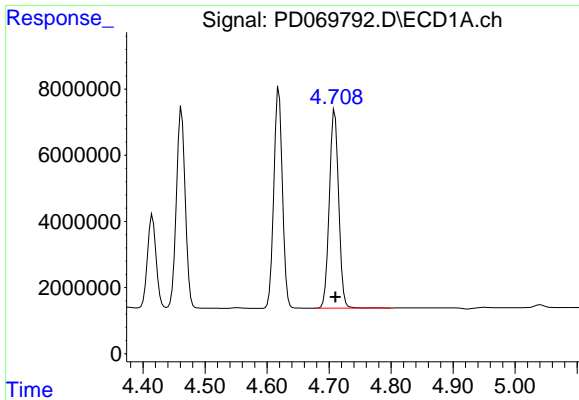
#3 gamma-BHC (Lindane)
 R.T.: 4.857 min
 Delta R.T.: -0.003 min
 Response: 513923361
 Conc: 40.13 ng/ml



#4 Heptachlor
 R.T.: 4.462 min
 Delta R.T.: -0.001 min
 Response: 59831235
 Conc: 42.72 ng/ml



#4 Heptachlor
 R.T.: 5.383 min
 Delta R.T.: -0.002 min
 Response: 483835032
 Conc: 38.95 ng/ml

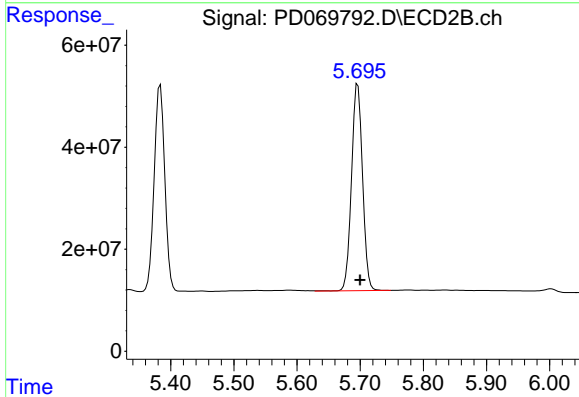


#5 Aldrin
 R.T.: 4.709 min
 Delta R.T.: -0.001 min
 Response: 62658008
 Conc: 46.51 ng/ml

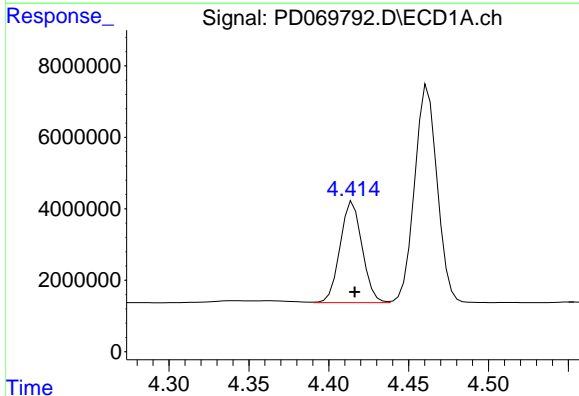
Instrument :
 ECD_D
 ClientSampleId :
 PB145000BS

Manual Integrations
 APPROVED

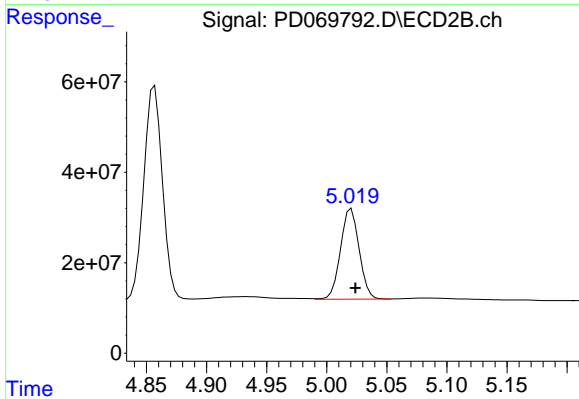
Reviewed By :Abdul Mirza 05/24/2022
 Supervised By :Ankita Jodhani 05/24/2022



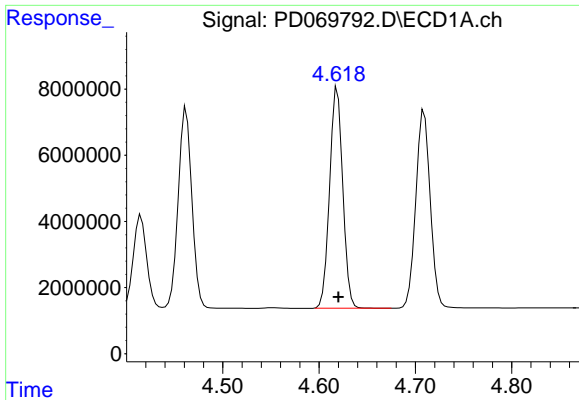
#5 Aldrin
 R.T.: 5.696 min
 Delta R.T.: -0.003 min
 Response: 491205335
 Conc: 40.77 ng/ml



#6 beta-BHC
 R.T.: 4.415 min
 Delta R.T.: -0.001 min
 Response: 27248389
 Conc: 41.83 ng/ml



#6 beta-BHC
 R.T.: 5.021 min
 Delta R.T.: -0.003 min
 Response: 216123154
 Conc: 38.49 ng/ml

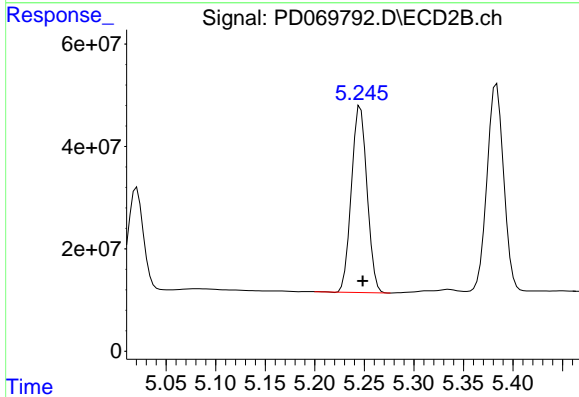


#7 delta-BHC
 R.T.: 4.619 min
 Delta R.T.: -0.001 min
 Response: 63464806
 Conc: 45.44 ng/ml

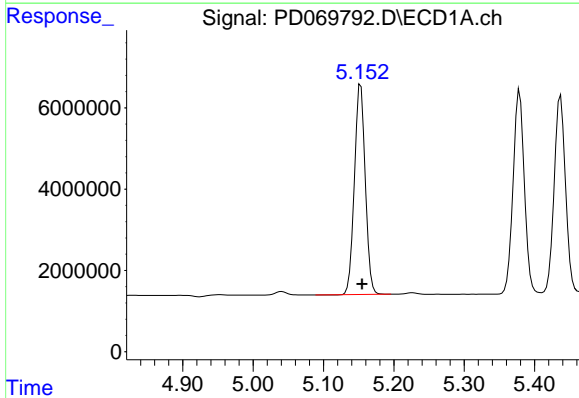
Instrument :
 ECD_D
 ClientSampleId :
 PB145000BS

Manual Integrations
 APPROVED

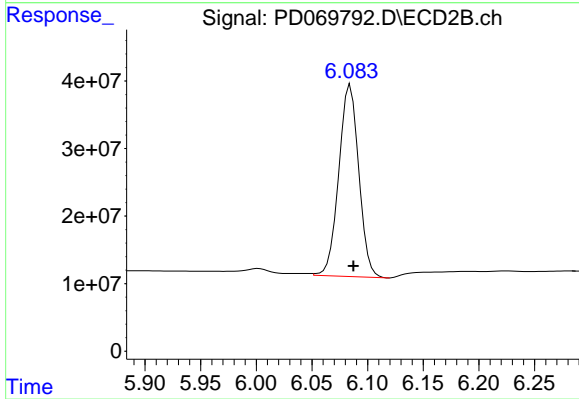
Reviewed By :Abdul Mirza 05/24/2022
 Supervised By :Ankita Jodhani 05/24/2022



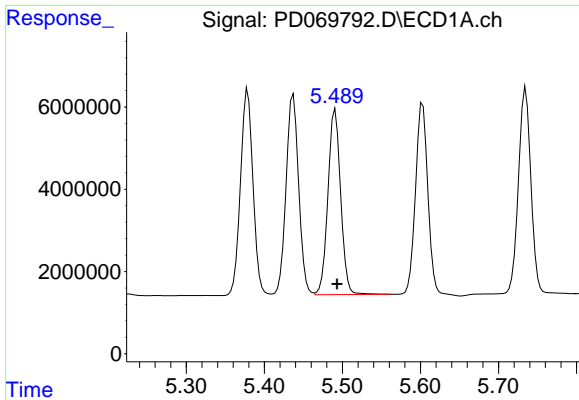
#7 delta-BHC
 R.T.: 5.246 min
 Delta R.T.: -0.002 min
 Response: 399708901
 Conc: 44.31 ng/ml



#8 Heptachlor epoxide
 R.T.: 5.153 min
 Delta R.T.: -0.002 min
 Response: 55633329
 Conc: 43.94 ng/ml



#8 Heptachlor epoxide
 R.T.: 6.085 min
 Delta R.T.: -0.003 min
 Response: 355111273
 Conc: 39.80 ng/ml



#9 Endosulfan I

R.T.: 5.491 min
 Delta R.T.: -0.002 min
 Response: 51175669
 Conc: 43.15 ng/ml

Instrument :

ECD_D

ClientSampleId :

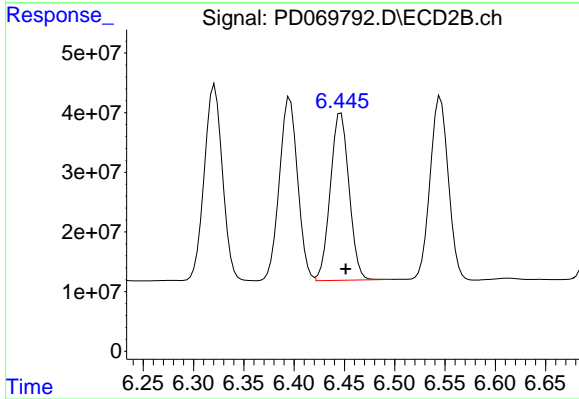
PB145000BS

Manual Integrations

APPROVED

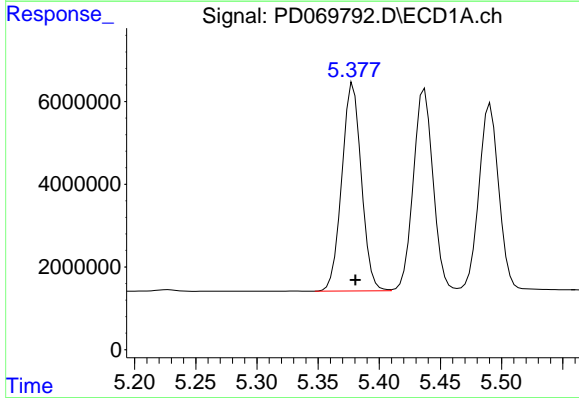
Reviewed By :Abdul Mirza 05/24/2022

Supervised By :Ankita Jodhani 05/24/2022



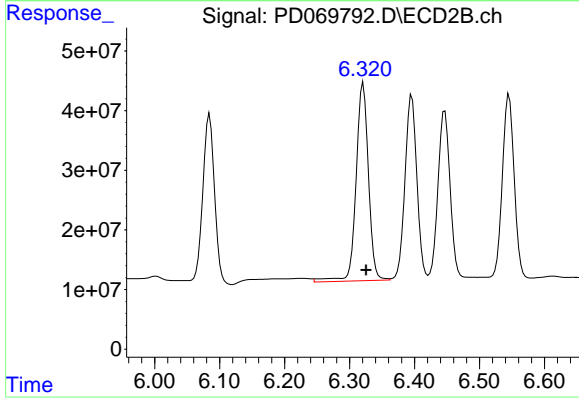
#9 Endosulfan I

R.T.: 6.447 min
 Delta R.T.: -0.005 min
 Response: 362488864
 Conc: 36.57 ng/ml



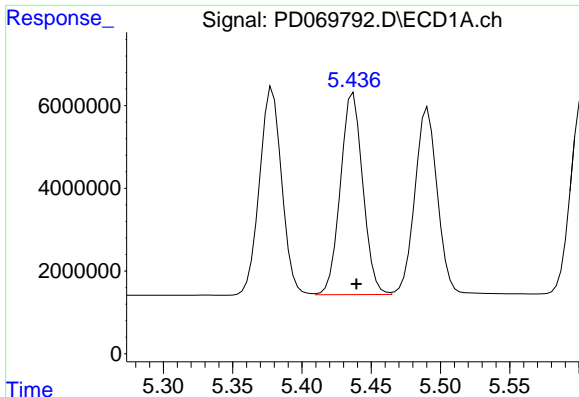
#10 gamma-Chlordane

R.T.: 5.379 min
 Delta R.T.: -0.002 min
 Response: 55793697
 Conc: 43.62 ng/ml



#10 gamma-Chlordane

R.T.: 6.321 min
 Delta R.T.: -0.004 min
 Response: 439856600
 Conc: 41.10 ng/ml



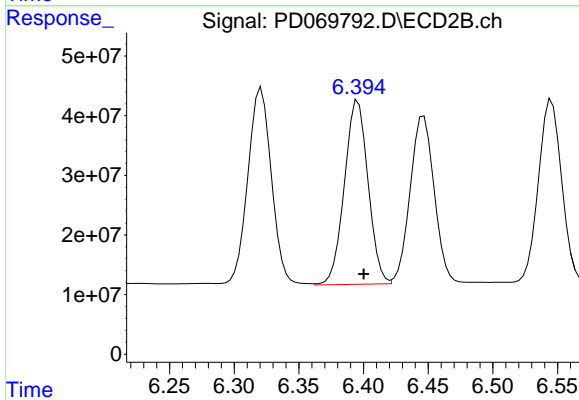
#11 alpha-Chlordane

R.T.: 5.437 min
 Delta R.T.: -0.002 min
 Response: 54898954
 Conc: 43.38 ng/ml

Instrument :
 ECD_D
 ClientSampleId :
 PB145000BS

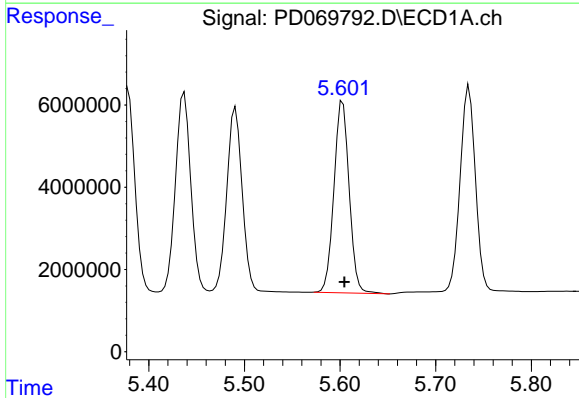
Manual Integrations
 APPROVED

Reviewed By :Abdul Mirza 05/24/2022
 Supervised By :Ankita Jodhani 05/24/2022



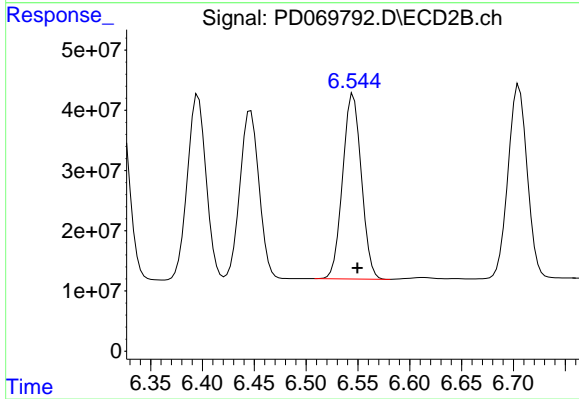
#11 alpha-Chlordane

R.T.: 6.396 min
 Delta R.T.: -0.004 min
 Response: 391920561
 Conc: 37.34 ng/ml



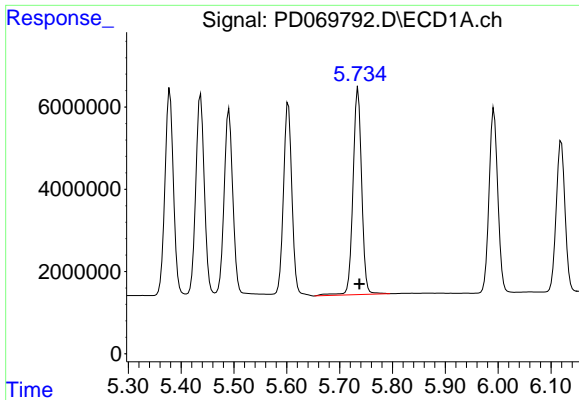
#12 4,4'-DDE

R.T.: 5.603 min
 Delta R.T.: -0.002 min
 Response: 51541003
 Conc: 44.53 ng/ml



#12 4,4'-DDE

R.T.: 6.545 min
 Delta R.T.: -0.004 min
 Response: 386486583
 Conc: 38.94 ng/ml



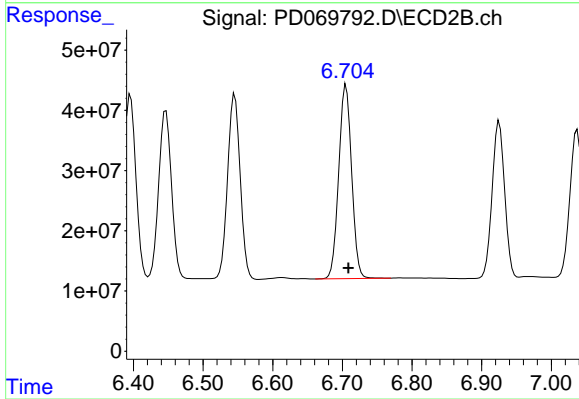
#13 Dieldrin

R.T.: 5.735 min
 Delta R.T.: -0.002 min
 Response: 57520318
 Conc: 46.53 ng/ml

Instrument :
 ECD_D
 ClientSampleId :
 PB145000BS

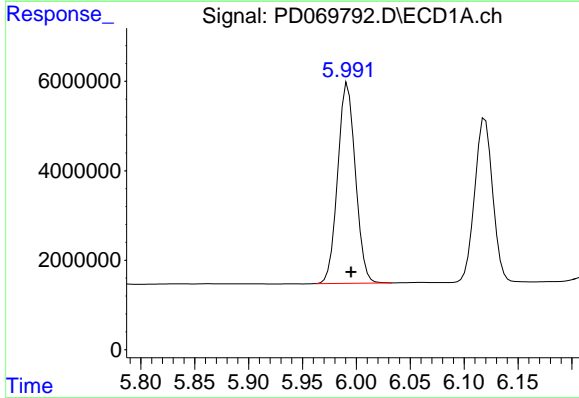
Manual Integrations
 APPROVED

Reviewed By :Abdul Mirza 05/24/2022
 Supervised By :Ankita Jodhani 05/24/2022



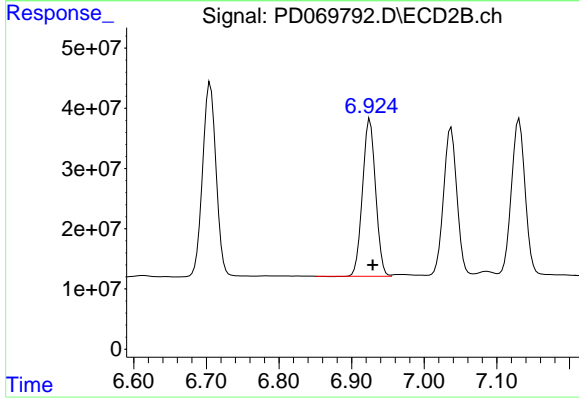
#13 Dieldrin

R.T.: 6.705 min
 Delta R.T.: -0.004 min
 Response: 414888734
 Conc: 40.53 ng/ml



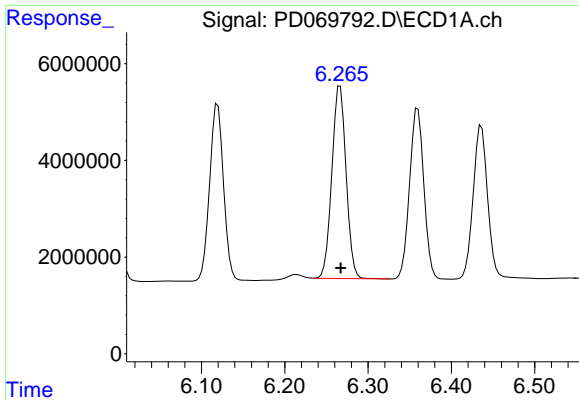
#14 Endrin

R.T.: 5.992 min
 Delta R.T.: -0.003 min
 Response: 51223587
 Conc: 46.10 ng/ml



#14 Endrin

R.T.: 6.925 min
 Delta R.T.: -0.004 min
 Response: 326497255
 Conc: 40.17 ng/ml



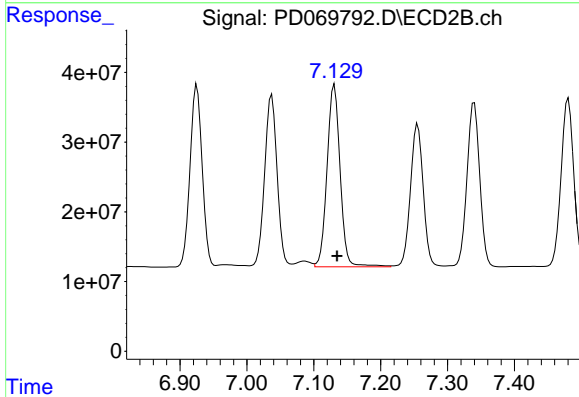
#15 Endosulfan II

R.T.: 6.266 min
 Delta R.T.: 0.000 min
 Response: 47357912
 Conc: 45.28 ng/ml

Instrument :
 ECD_D
 ClientSampleId :
 PB145000BS

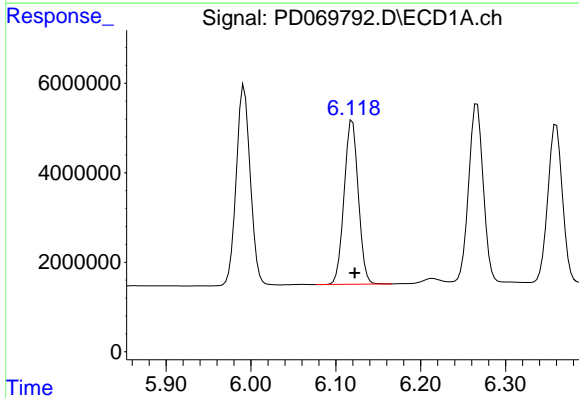
Manual Integrations
 APPROVED

Reviewed By :Abdul Mirza 05/24/2022
 Supervised By :Ankita Jodhani 05/24/2022



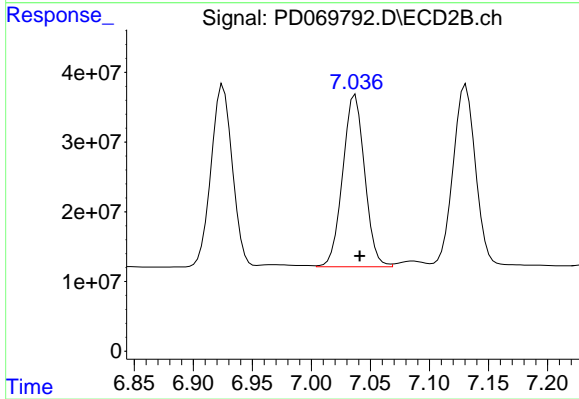
#15 Endosulfan II

R.T.: 7.131 min
 Delta R.T.: -0.004 min
 Response: 35455280
 Conc: 43.10 ng/ml



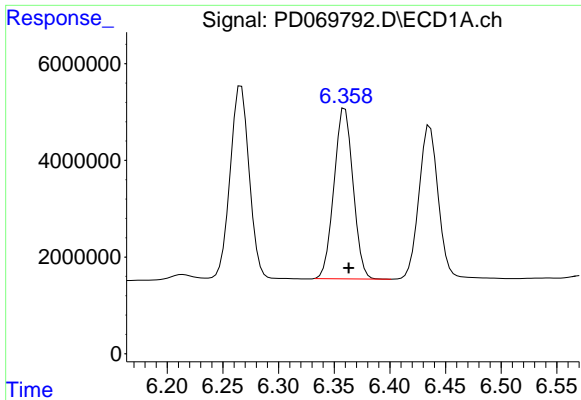
#16 4,4'-DDD

R.T.: 6.119 min
 Delta R.T.: -0.003 min
 Response: 42527514
 Conc: 42.72 ng/ml



#16 4,4'-DDD

R.T.: 7.037 min
 Delta R.T.: -0.004 min
 Response: 319447004
 Conc: 39.43 ng/ml



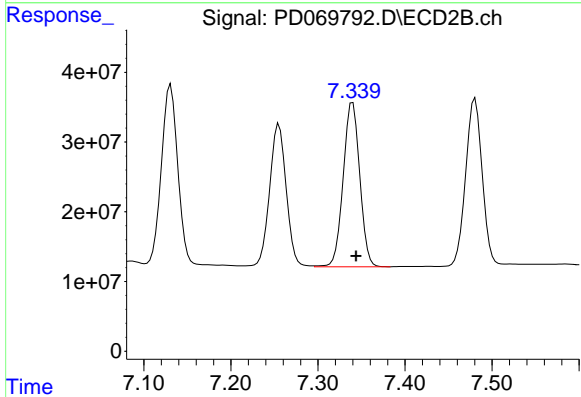
#17 4,4'-DDT

R.T.: 6.360 min
 Delta R.T.: -0.003 min
 Response: 42045150
 Conc: 43.79 ng/ml

Instrument :
 ECD_D
 ClientSampleId :
 PB145000BS

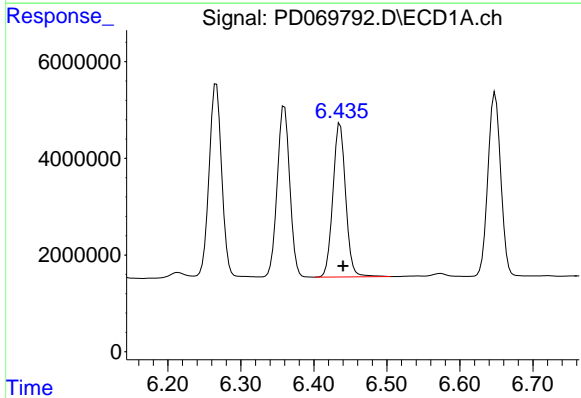
Manual Integrations
 APPROVED

Reviewed By :Abdul Mirza 05/24/2022
 Supervised By :Ankita Jodhani 05/24/2022



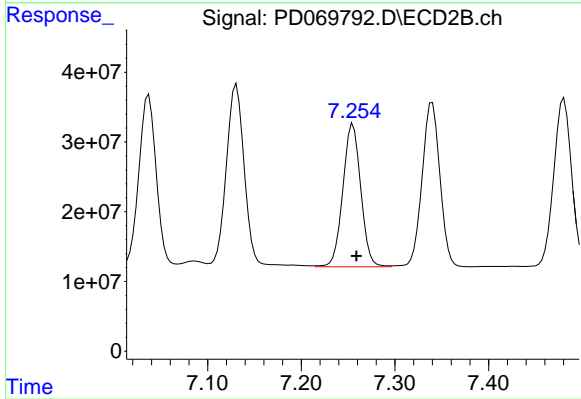
#17 4,4'-DDT

R.T.: 7.340 min
 Delta R.T.: -0.004 min
 Response: 311848099
 Conc: 37.92 ng/ml



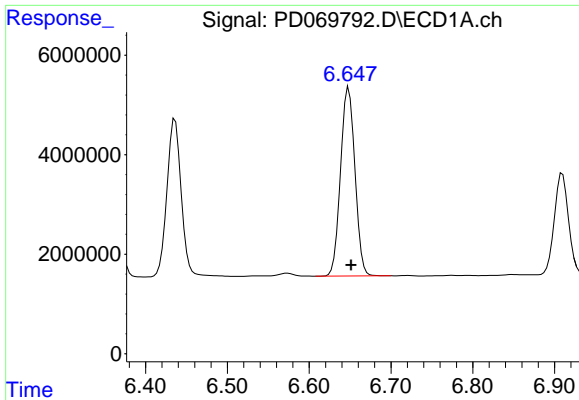
#18 Endrin aldehyde

R.T.: 6.436 min
 Delta R.T.: -0.004 min
 Response: 38630993
 Conc: 44.92 ng/ml



#18 Endrin aldehyde

R.T.: 7.255 min
 Delta R.T.: -0.004 min
 Response: 272786909
 Conc: 42.76 ng/ml

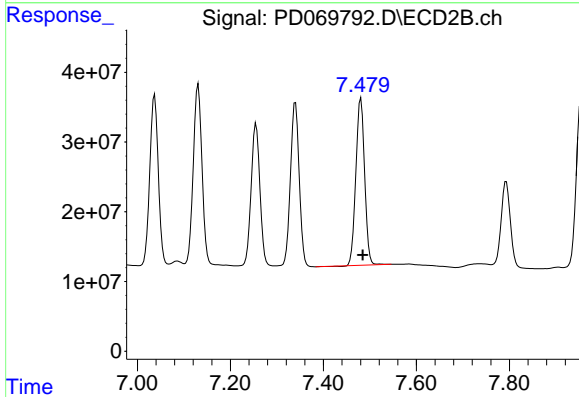


#19 Endosulfan Sulfate
 R.T.: 6.648 min
 Delta R.T.: -0.003 min
 Response: 46191257
 Conc: 41.99 ng/ml

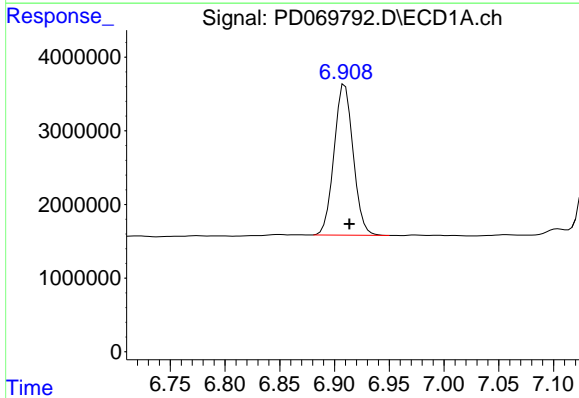
Instrument :
 ECD_D
 ClientSampleId :
 PB145000BS

Manual Integrations
APPROVED

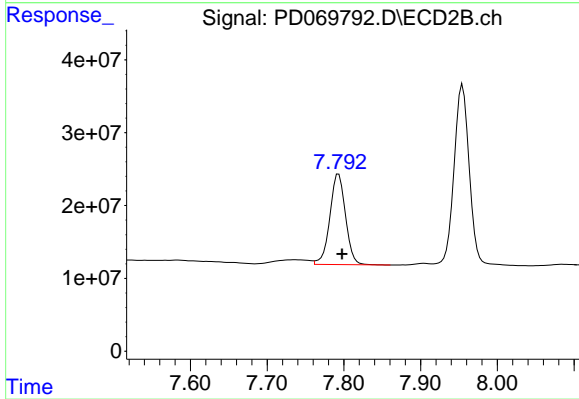
Reviewed By :Abdul Mirza 05/24/2022
 Supervised By :Ankita Jodhani 05/24/2022



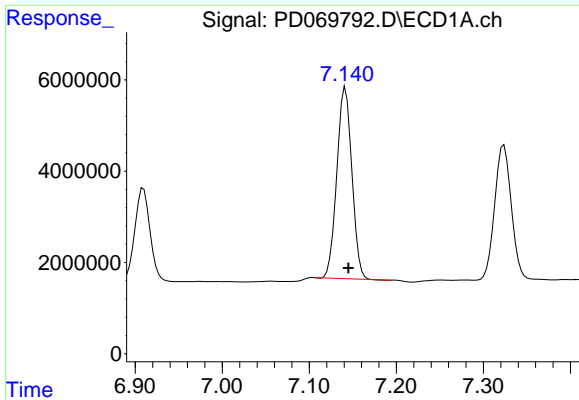
#19 Endosulfan Sulfate
 R.T.: 7.481 min
 Delta R.T.: -0.004 min
 Response: 314000035
 Conc: 39.30 ng/ml



#20 Methoxychlor
 R.T.: 6.910 min
 Delta R.T.: -0.004 min
 Response: 24811944
 Conc: 43.05 ng/ml



#20 Methoxychlor
 R.T.: 7.793 min
 Delta R.T.: -0.004 min
 Response: 176318592
 Conc: 42.76 ng/ml



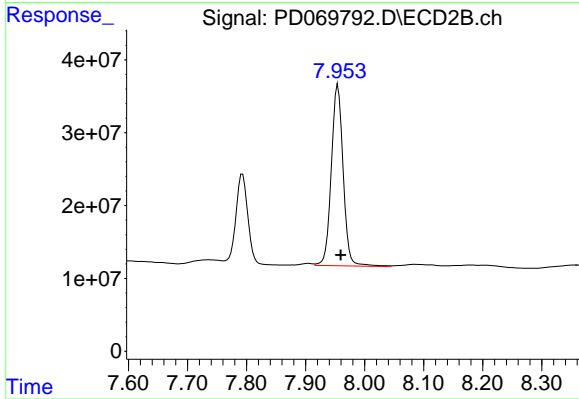
#21 Endrin ketone

R.T.: 7.142 min
 Delta R.T.: -0.004 min
 Response: 50231719
 Conc: 40.10 ng/ml

Instrument :
 ECD_D
 ClientSampleId :
 PB145000BS

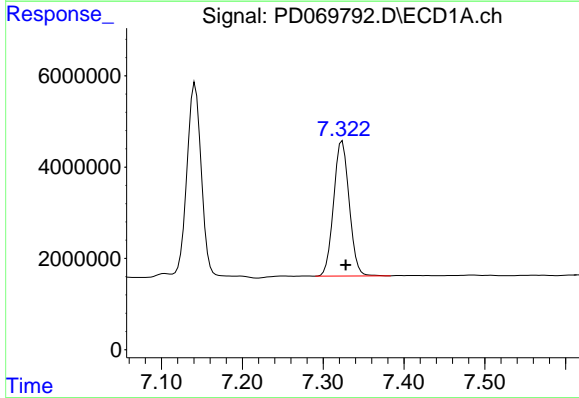
Manual Integrations
 APPROVED

Reviewed By :Abdul Mirza 05/24/2022
 Supervised By :Ankita Jodhani 05/24/2022



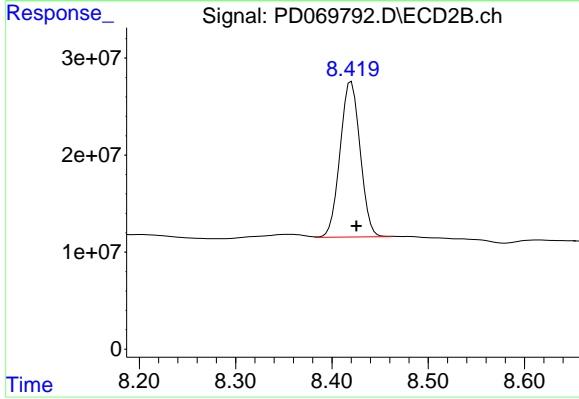
#21 Endrin ketone

R.T.: 7.955 min
 Delta R.T.: -0.005 min
 Response: 347814658
 Conc: 41.64 ng/ml



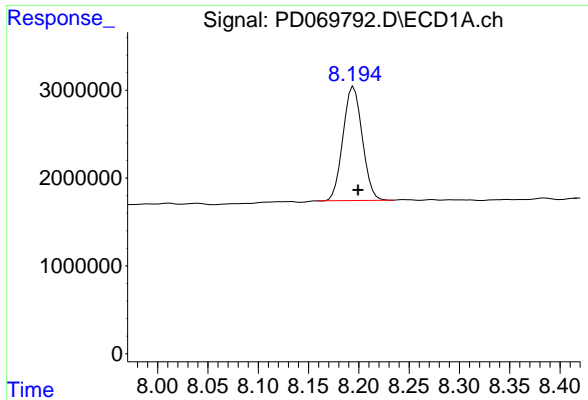
#22 Mirex

R.T.: 7.324 min
 Delta R.T.: -0.004 min
 Response: 39553738
 Conc: 39.52 ng/ml



#22 Mirex

R.T.: 8.419 min
 Delta R.T.: -0.007 min
 Response: 231162194
 Conc: 39.36 ng/ml m



#28 Decachlorobiphenyl

R.T.: 8.195 min
Delta R.T.: -0.004 min
Response: 17247284
Conc: 15.99 ng/ml

Instrument :

ECD_D

ClientSampleId :

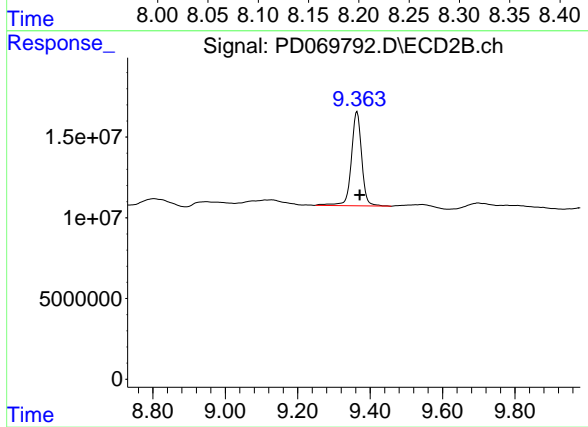
PB145000BS

Manual Integrations

APPROVED

Reviewed By :Abdul Mirza 05/24/2022

Supervised By :Ankita Jodhani 05/24/2022



#28 Decachlorobiphenyl

R.T.: 9.364 min
Delta R.T.: -0.007 min
Response: 116116375
Conc: 19.38 ng/ml