

Data Path : Z:\pestpcbsrv\HPCHEM1\ECD_D\Data\PD052422\
 Data File : PD069794.D
 Signal(s) : Signal #1: ECD1A.ch Signal #2: ECD2B.ch
 Acq On : 23 May 2022 19:09
 Operator : AR\AJ
 Sample : PB145038BS
 Misc :
 ALS Vial : 8 Sample Multiplier: 1

Instrument :

ECD_D

ClientSampleId :

PB145038BS

Manual Integrations

APPROVED

Reviewed By :Abdul Mirza 05/24/2022
 Supervised By :Ankita Jodhani 05/24/2022

Integration File signal 1: autoint1.e
 Integration File signal 2: autoint2.e
 Quant Time: May 24 02:39:36 2022
 Quant Method : Z:\pestpcbsrv\HPCHEM1\ECD_D\Method\PD052022.M
 Quant Title : GC Extractables
 QLast Update : Mon May 23 02:08:05 2022
 Response via : Initial Calibration
 Integrator: ChemStation

Volume Inj. : 2 µl
 Signal #1 Phase : ZB-MR1 Signal #2 Phase: ZB-MR1
 Signal #1 Info : 30M x 0.32mm x0.2 Signal #2 Info : 30M x 0.32mm x 0.50µm

Compound	RT#1	RT#2	Resp#1	Resp#2	ng/ml	ng/ml

System Monitoring Compounds						
1) SA Tetrachlo...	3.443	4.170	20162133	205.2E6	20.120	21.477
28) SA Decachlor...	8.194	9.363	22015656	134.0E6	20.410	22.354
Target Compounds						
2) A alpha-BHC	3.881	4.566	86540431	762.6E6	57.947	54.674
3) MA gamma-BHC...	4.164	4.857	86164738	680.8E6	58.360	53.160
4) MA Heptachlor	4.462	5.384	75333692	629.1E6	53.788	50.648
5) MB Aldrin	4.708	5.696	78344918	648.7E6	58.153	53.844
6) B beta-BHC	4.414	5.020	33296207	297.8E6	51.118	53.046
7) B delta-BHC	4.618	5.246	76738858	523.8E6	54.945	58.073
8) B Heptachlo...	5.152	6.085	70188301	477.6E6	55.435	53.520
9) A Endosulfan I	5.491	6.447	64651142	510.7E6	54.509	51.524
10) B gamma-Chl...	5.378	6.321	70818381	564.1E6	55.367	52.706
11) B alpha-Chl...	5.437	6.396	69761119	546.5E6	55.130	52.068
12) B 4,4'-DDE	5.602	6.546	65543646	522.4E6	56.631	52.633
13) MA Dieldrin	5.734	6.705	71500106	556.7E6	57.836	54.379
14) MA Endrin	5.992	6.926	65626112	461.2E6	59.063	56.742
15) B Endosulfa...	6.266	7.131	61499666	472.4E6	58.796	57.428
16) A 4,4'-DDD	6.120	7.037	55412520	430.6E6	55.659	53.142
17) MA 4,4'-DDT	6.359	7.339	54662030	439.5E6	56.936	53.443
18) B Endrin al...	6.436	7.254	50644618	377.6E6	58.893	59.191
19) B Endosulfa...	6.648	7.479	60657257	428.2E6	55.145	53.594
20) A Methoxychlor	6.910	7.793	32302797	222.0E6	56.044	53.847
21) B Endrin ke...	7.141	7.954	68300351	447.2E6	54.520	53.527
22) Mirex	7.324	8.419	50326211	305.7E6	50.277	52.055m

(f)=RT Delta > 1/2 Window (#)=Amounts differ by > 25% (m)=manual int.

Data Path : Z:\pestpcbsrv\HPCHEM1\ECD_D\Data\PD052422\
 Data File : PD069794.D
 Signal(s) : Signal #1: ECD1A.ch Signal #2: ECD2B.ch
 Acq On : 23 May 2022 19:09
 Operator : AR\AJ
 Sample : PB145038BS
 Misc :
 ALS Vial : 8 Sample Multiplier: 1

Instrument :

ECD_D

ClientSampleId :

PB145038BS

Manual Integrations

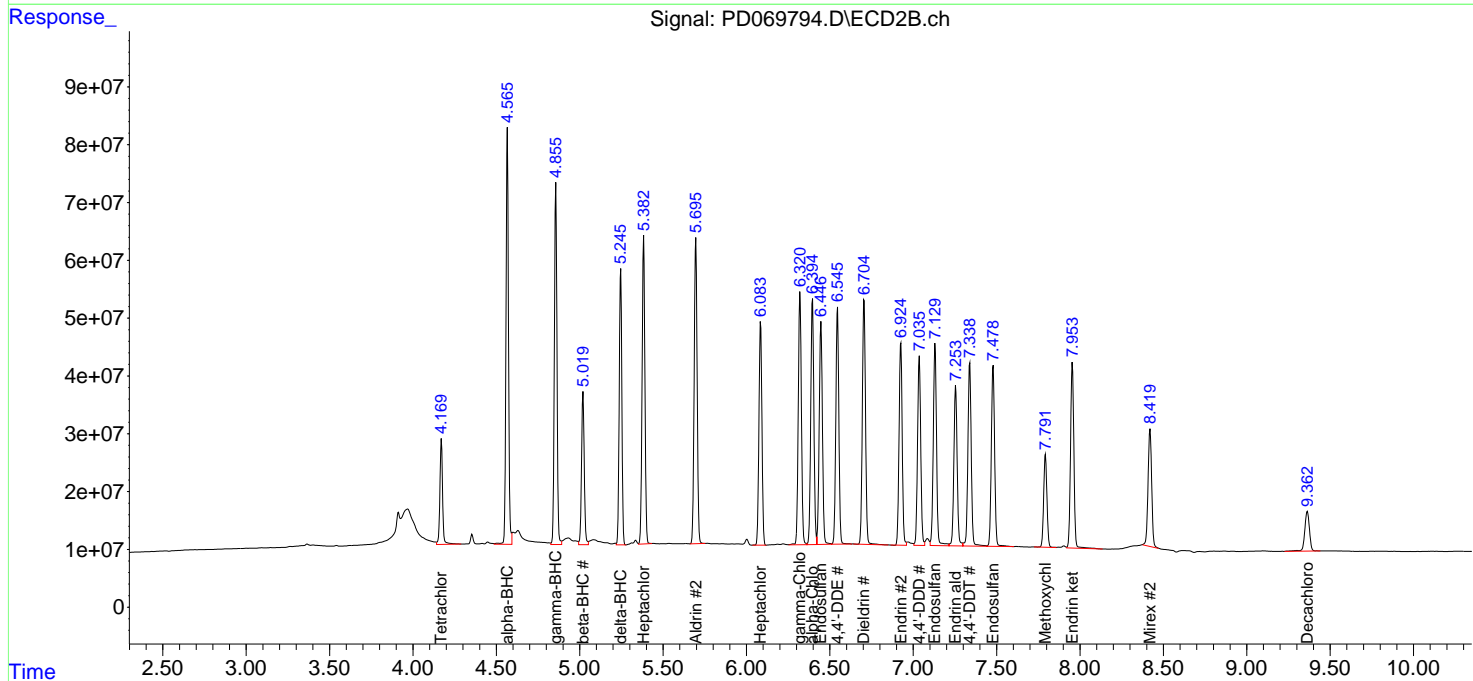
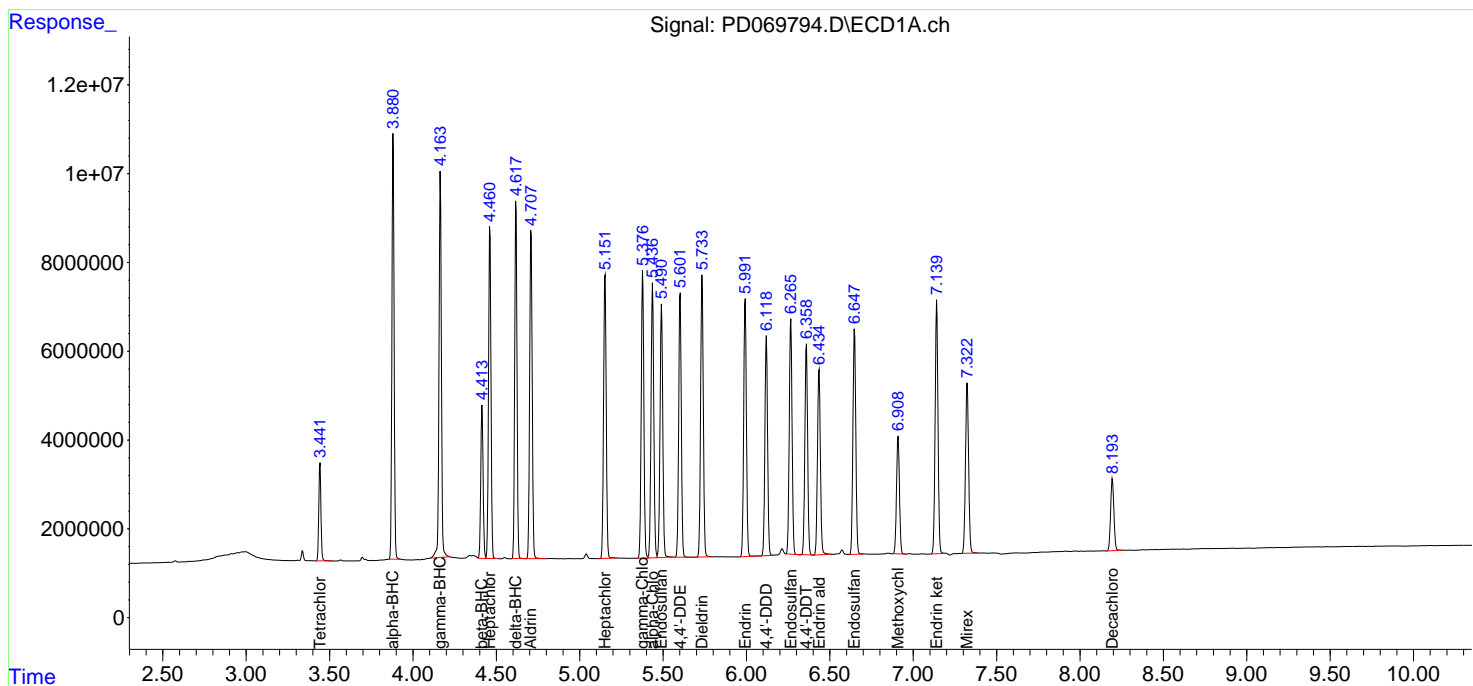
APPROVED

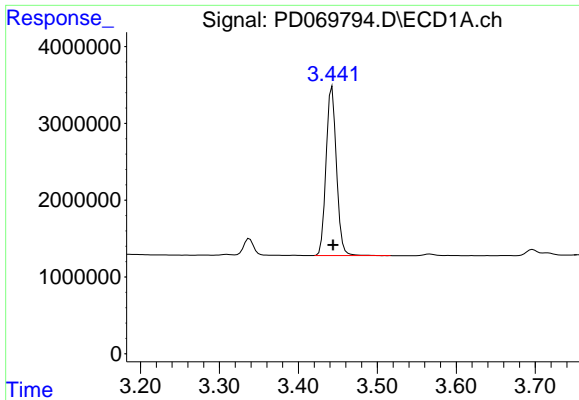
Reviewed By :Abdul Mirza 05/24/2022

Supervised By :Ankita Jodhani 05/24/2022

Integration File signal 1: autoint1.e
 Integration File signal 2: autoint2.e
 Quant Time: May 24 02:39:36 2022
 Quant Method : Z:\pestpcbsrv\HPCHEM1\ECD_D\Method\PD052022.M
 Quant Title : GC Extractables
 QLast Update : Mon May 23 02:08:05 2022
 Response via : Initial Calibration
 Integrator: ChemStation

Volume Inj. : 2 µl
 Signal #1 Phase : ZB-MR2 Signal #2 Phase: ZB-MR1
 Signal #1 Info : 30M x 0.32mm x0.2 Signal #2 Info : 30M x 0.32mm x 0.50µm





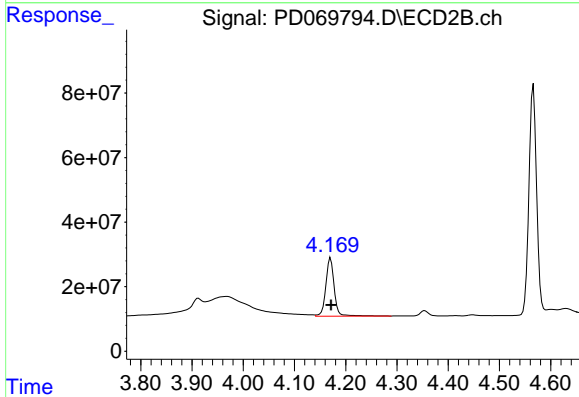
#1 Tetrachloro-m-xylene

R.T.: 3.443 min
 Delta R.T.: -0.001 min
 Response: 20162133
 Conc: 20.12 ng/ml

Instrument : ECD_D
 Client Sample Id : PB145038BS

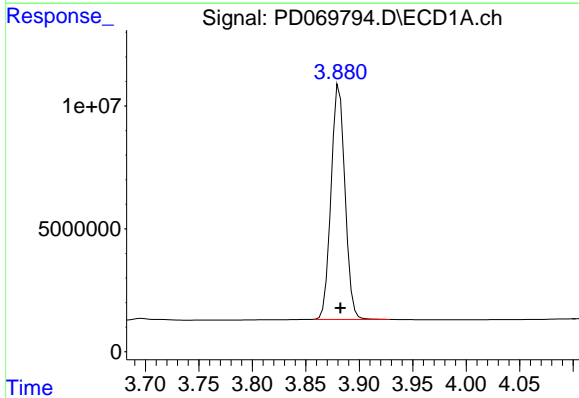
Manual Integrations
 APPROVED

Reviewed By :Abdul Mirza 05/24/2022
 Supervised By :Ankita Jodhani 05/24/2022



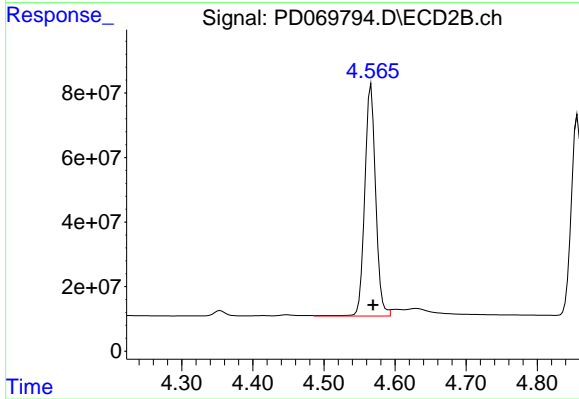
#1 Tetrachloro-m-xylene

R.T.: 4.170 min
 Delta R.T.: 0.000 min
 Response: 205194612
 Conc: 21.48 ng/ml



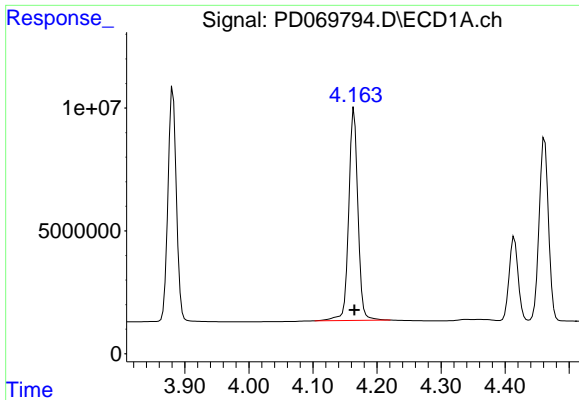
#2 alpha-BHC

R.T.: 3.881 min
 Delta R.T.: -0.001 min
 Response: 86540431
 Conc: 57.95 ng/ml



#2 alpha-BHC

R.T.: 4.566 min
 Delta R.T.: -0.003 min
 Response: 762586248
 Conc: 54.67 ng/ml

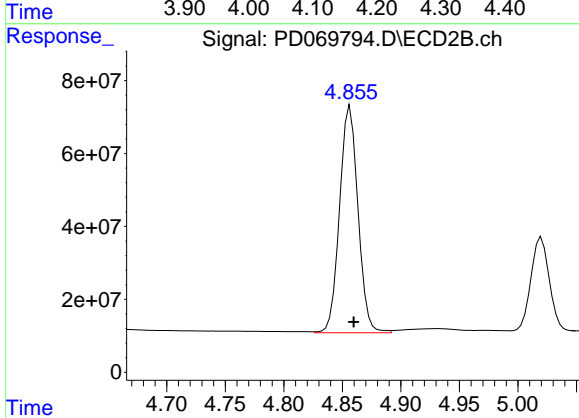


#3 gamma-BHC (Lindane)
 R.T.: 4.164 min
 Delta R.T.: 0.000 min
 Response: 86164738
 Conc: 58.36 ng/ml

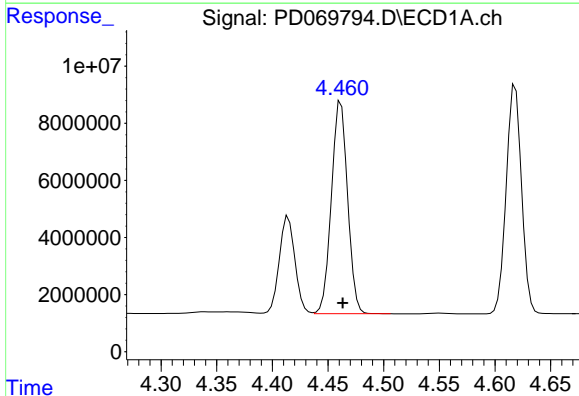
Instrument :
 ECD_D
 ClientSampleId :
 PB145038BS

Manual Integrations
 APPROVED

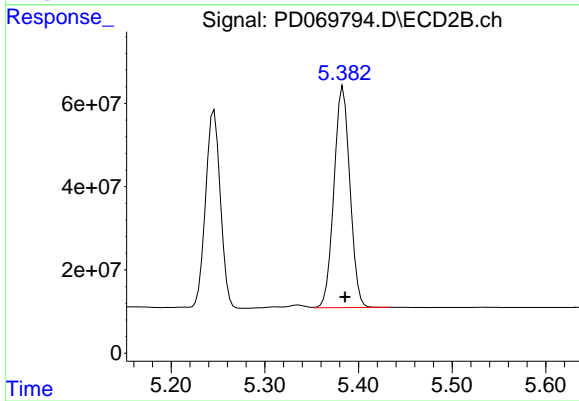
Reviewed By :Abdul Mirza 05/24/2022
 Supervised By :Ankita Jodhani 05/24/2022



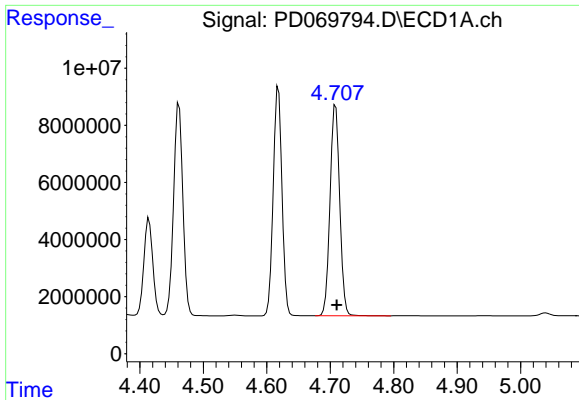
#3 gamma-BHC (Lindane)
 R.T.: 4.857 min
 Delta R.T.: -0.003 min
 Response: 680820946
 Conc: 53.16 ng/ml



#4 Heptachlor
 R.T.: 4.462 min
 Delta R.T.: -0.002 min
 Response: 75333692
 Conc: 53.79 ng/ml



#4 Heptachlor
 R.T.: 5.384 min
 Delta R.T.: -0.002 min
 Response: 629110781
 Conc: 50.65 ng/ml

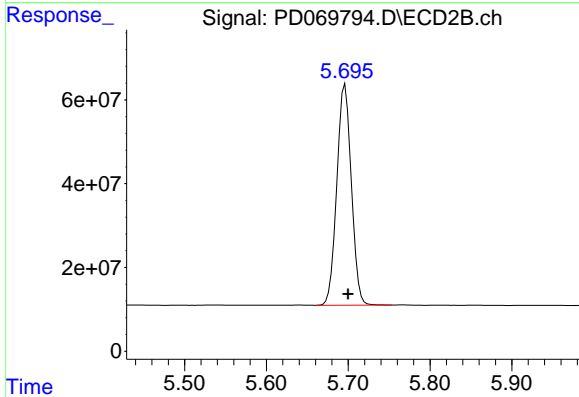


#5 Aldrin
 R.T.: 4.708 min
 Delta R.T.: -0.002 min
 Response: 78344918
 Conc: 58.15 ng/ml

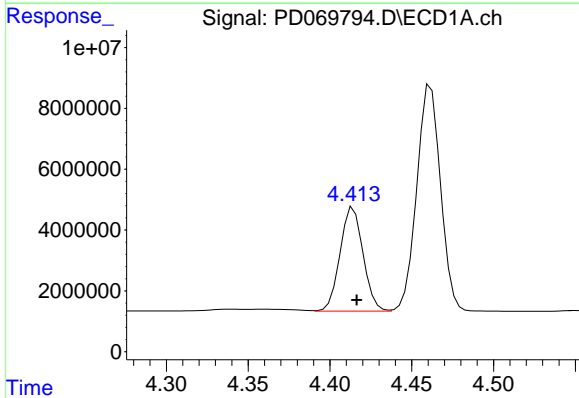
Instrument :
 ECD_D
 ClientSampleId :
 PB145038BS

Manual Integrations
 APPROVED

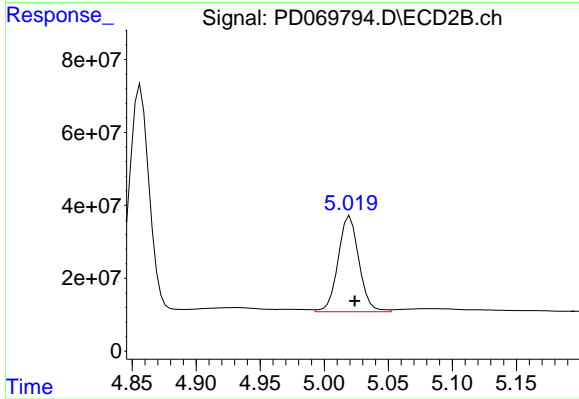
Reviewed By :Abdul Mirza 05/24/2022
 Supervised By :Ankita Jodhani 05/24/2022



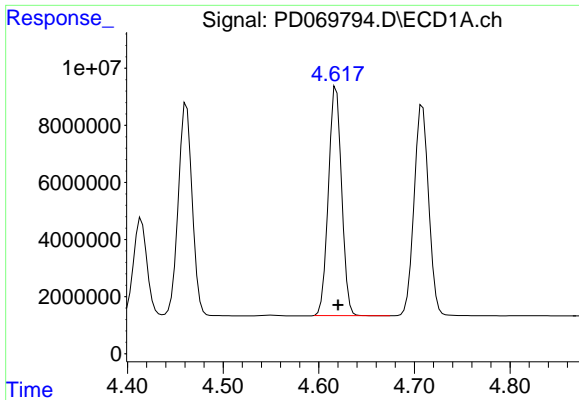
#5 Aldrin
 R.T.: 5.696 min
 Delta R.T.: -0.003 min
 Response: 648744646
 Conc: 53.84 ng/ml



#6 beta-BHC
 R.T.: 4.414 min
 Delta R.T.: -0.002 min
 Response: 33296207
 Conc: 51.12 ng/ml



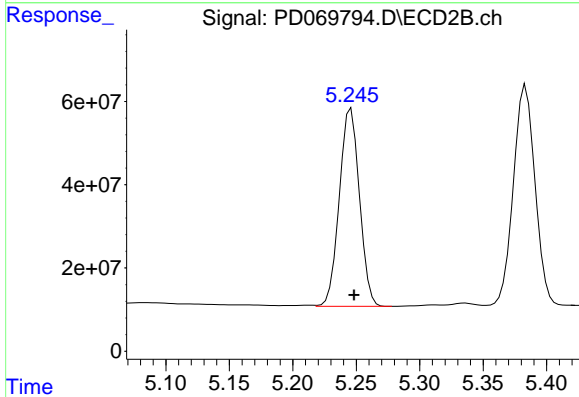
#6 beta-BHC
 R.T.: 5.020 min
 Delta R.T.: -0.003 min
 Response: 297836037
 Conc: 53.05 ng/ml



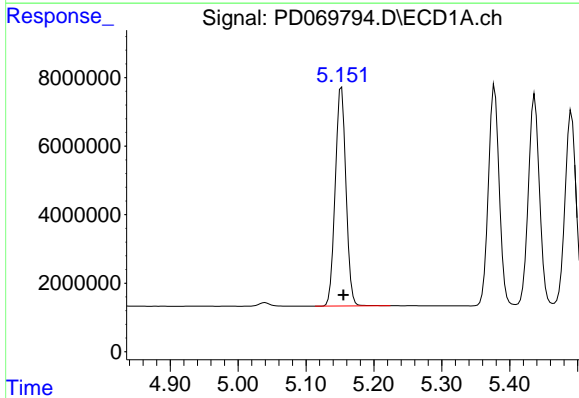
#7 delta-BHC
 R.T.: 4.618 min
 Delta R.T.: -0.002 min
 Response: 76738858
 Conc: 54.94 ng/ml

Instrument : ECD_D
 ClientSampleId : PB145038BS

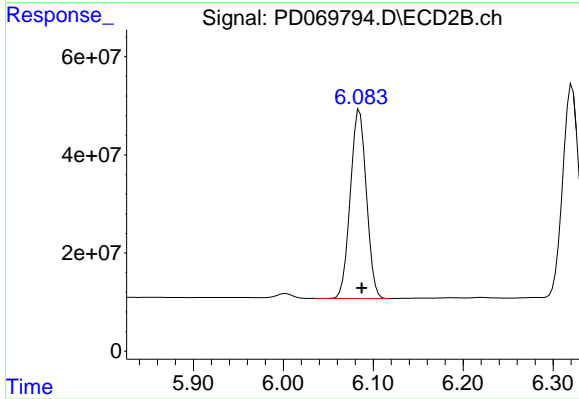
Manual Integrations
APPROVED
 Reviewed By :Abdul Mirza 05/24/2022
 Supervised By :Ankita Jodhani 05/24/2022



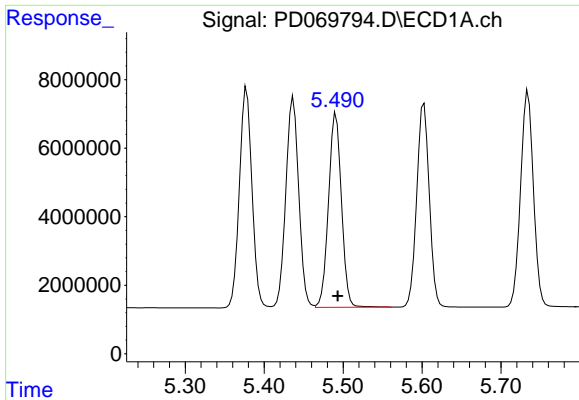
#7 delta-BHC
 R.T.: 5.246 min
 Delta R.T.: -0.002 min
 Response: 523832903
 Conc: 58.07 ng/ml



#8 Heptachlor epoxide
 R.T.: 5.152 min
 Delta R.T.: -0.003 min
 Response: 70188301
 Conc: 55.44 ng/ml



#8 Heptachlor epoxide
 R.T.: 6.085 min
 Delta R.T.: -0.002 min
 Response: 477566249
 Conc: 53.52 ng/ml



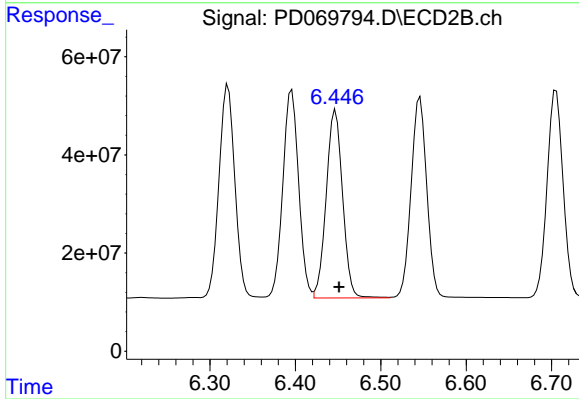
#9 Endosulfan I

R.T.: 5.491 min
 Delta R.T.: -0.002 min
 Response: 64651142
 Conc: 54.51 ng/ml

Instrument :
 ECD_D
 ClientSampleId :
 PB145038BS

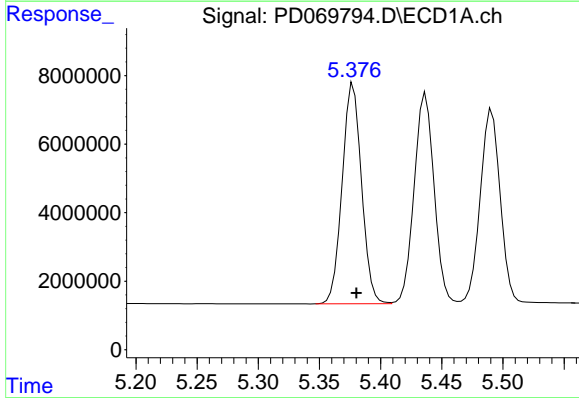
Manual Integrations
 APPROVED

Reviewed By :Abdul Mirza 05/24/2022
 Supervised By :Ankita Jodhani 05/24/2022



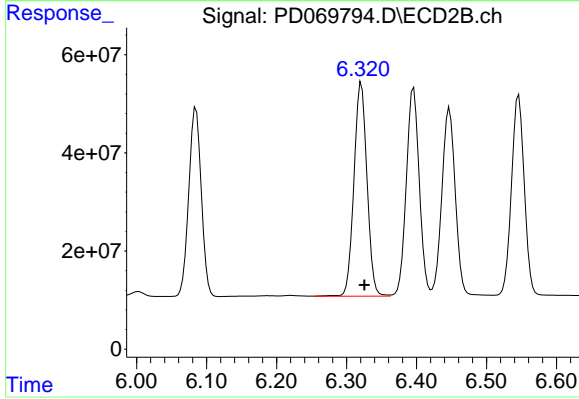
#9 Endosulfan I

R.T.: 6.447 min
 Delta R.T.: -0.004 min
 Response: 510665626
 Conc: 51.52 ng/ml



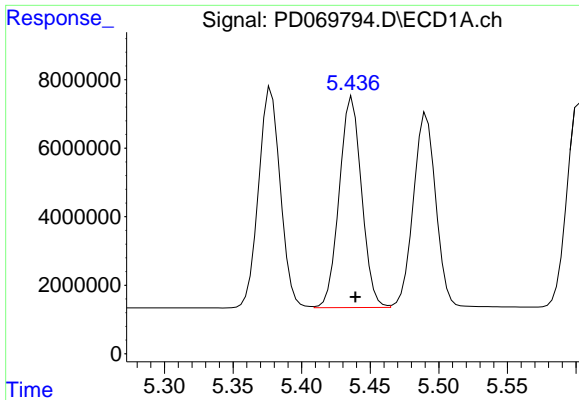
#10 gamma-Chlordane

R.T.: 5.378 min
 Delta R.T.: -0.003 min
 Response: 70818381
 Conc: 55.37 ng/ml



#10 gamma-Chlordane

R.T.: 6.321 min
 Delta R.T.: -0.004 min
 Response: 564097081
 Conc: 52.71 ng/ml



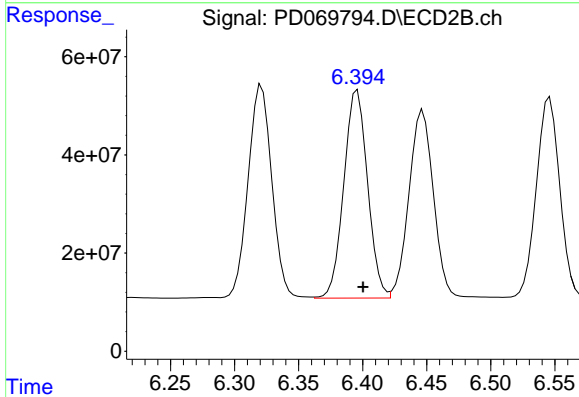
#11 alpha-Chlordane

R.T.: 5.437 min
 Delta R.T.: -0.002 min
 Response: 69761119
 Conc: 55.13 ng/ml

Instrument :
 ECD_D
 ClientSampleId :
 PB145038BS

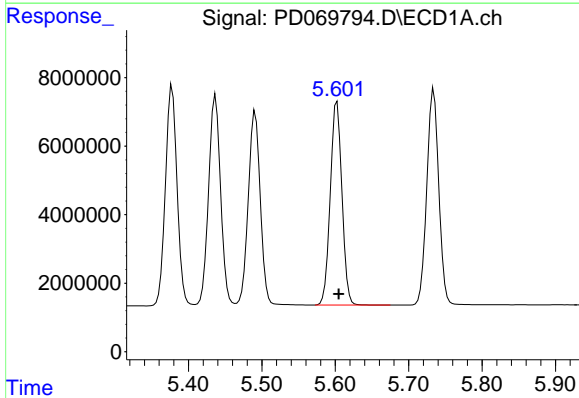
Manual Integrations
 APPROVED

Reviewed By :Abdul Mirza 05/24/2022
 Supervised By :Ankita Jodhani 05/24/2022



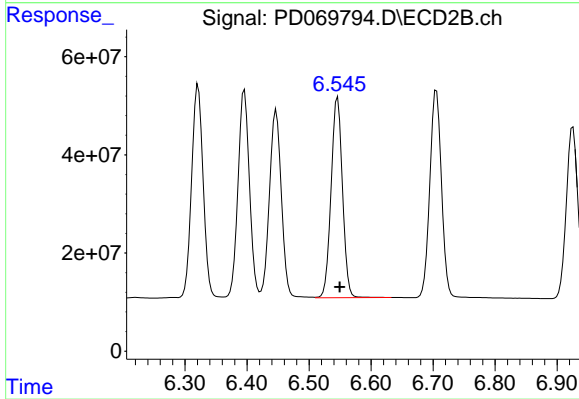
#11 alpha-Chlordane

R.T.: 6.396 min
 Delta R.T.: -0.004 min
 Response: 546450877
 Conc: 52.07 ng/ml



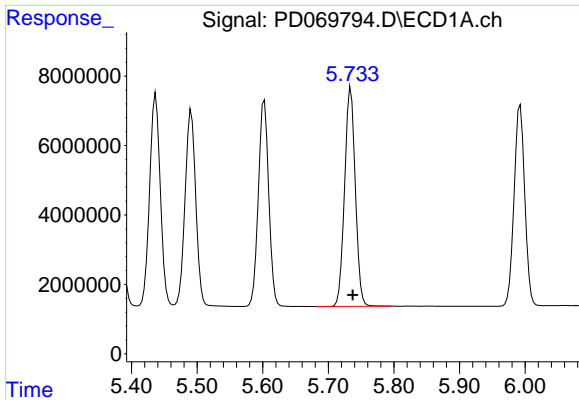
#12 4,4'-DDE

R.T.: 5.602 min
 Delta R.T.: -0.002 min
 Response: 65543646
 Conc: 56.63 ng/ml



#12 4,4'-DDE

R.T.: 6.546 min
 Delta R.T.: -0.004 min
 Response: 522446306
 Conc: 52.63 ng/ml

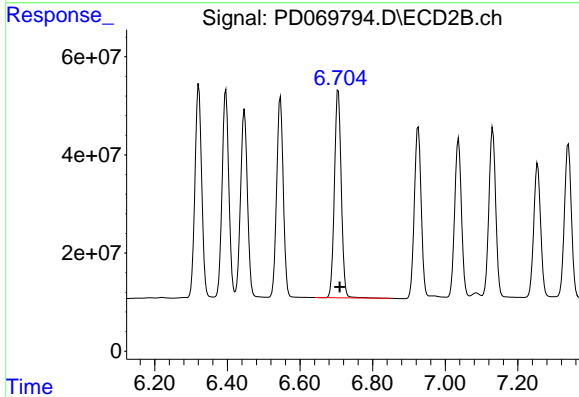


#13 Dieldrin
 R.T.: 5.734 min
 Delta R.T.: -0.003 min
 Response: 71500106
 Conc: 57.84 ng/ml

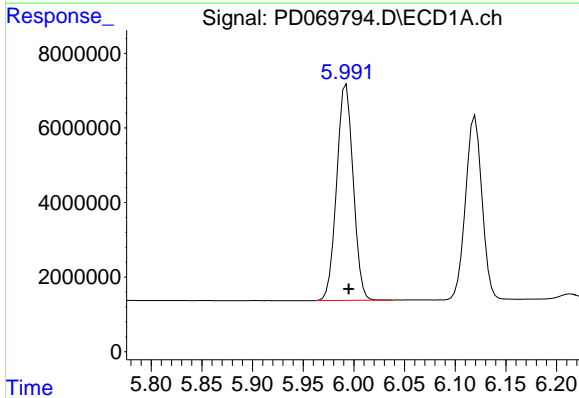
Instrument :
 ECD_D
 ClientSampleId :
 PB145038BS

Manual Integrations
 APPROVED

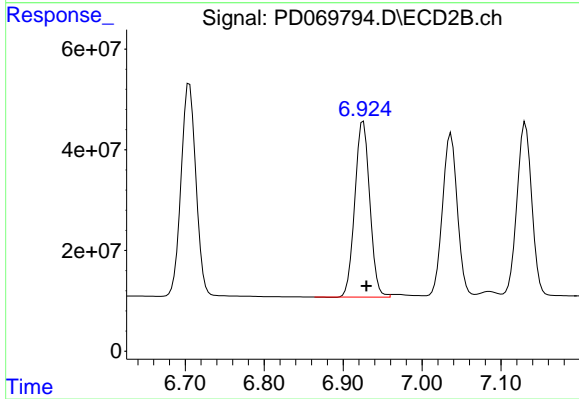
Reviewed By :Abdul Mirza 05/24/2022
 Supervised By :Ankita Jodhani 05/24/2022



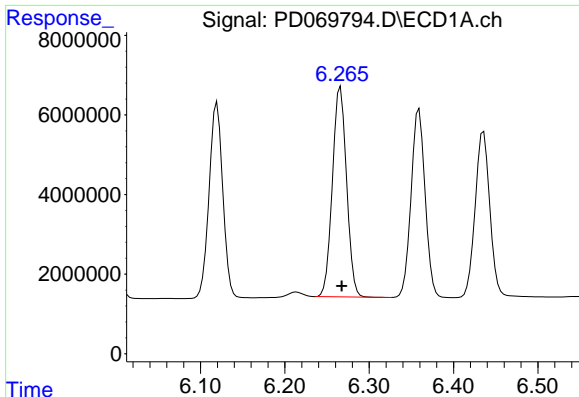
#13 Dieldrin
 R.T.: 6.705 min
 Delta R.T.: -0.004 min
 Response: 556725724
 Conc: 54.38 ng/ml



#14 Endrin
 R.T.: 5.992 min
 Delta R.T.: -0.003 min
 Response: 65626112
 Conc: 59.06 ng/ml



#14 Endrin
 R.T.: 6.926 min
 Delta R.T.: -0.004 min
 Response: 461201192
 Conc: 56.74 ng/ml



#15 Endosulfan II

R.T.: 6.266 min
 Delta R.T.: -0.001 min
 Response: 61499666
 Conc: 58.80 ng/ml

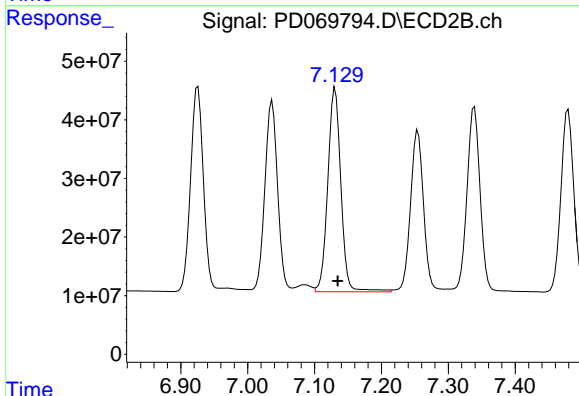
Instrument :

ECD_D

ClientSampleId :
 PB145038BS

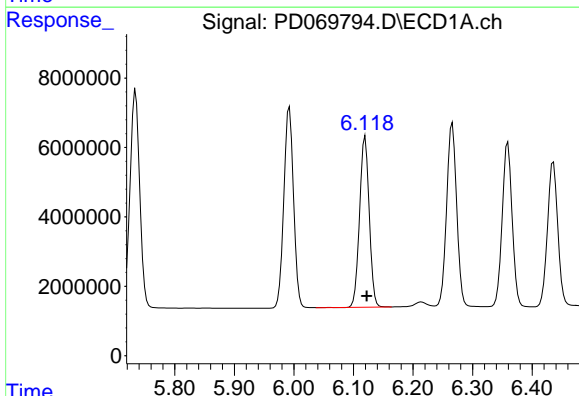
Manual Integrations
 APPROVED

Reviewed By :Abdul Mirza 05/24/2022
 Supervised By :Ankita Jodhani 05/24/2022



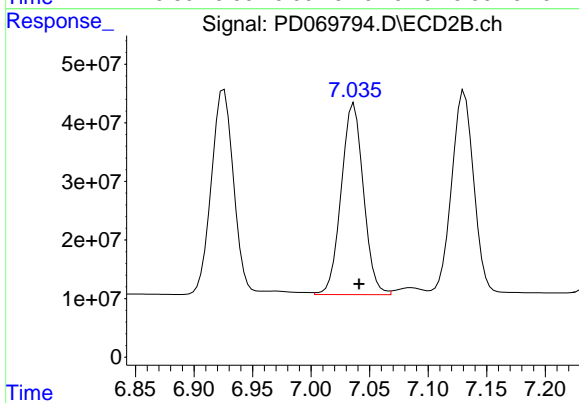
#15 Endosulfan II

R.T.: 7.131 min
 Delta R.T.: -0.004 min
 Response: 472381226
 Conc: 57.43 ng/ml



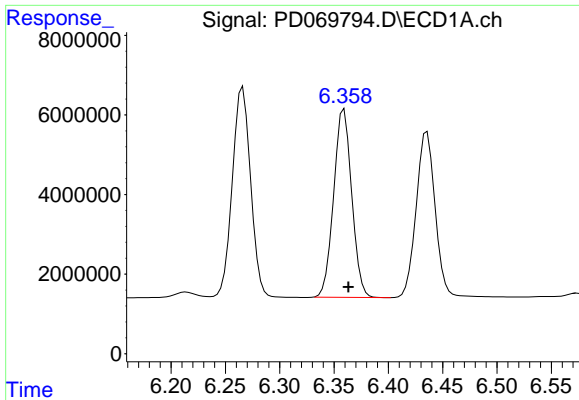
#16 4,4'-DDD

R.T.: 6.120 min
 Delta R.T.: -0.003 min
 Response: 55412520
 Conc: 55.66 ng/ml



#16 4,4'-DDD

R.T.: 7.037 min
 Delta R.T.: -0.004 min
 Response: 430579752
 Conc: 53.14 ng/ml



#17 4,4'-DDT

R.T.: 6.359 min
 Delta R.T.: -0.004 min
 Response: 54662030
 Conc: 56.94 ng/ml

Instrument :

ECD_D

ClientSampleId :

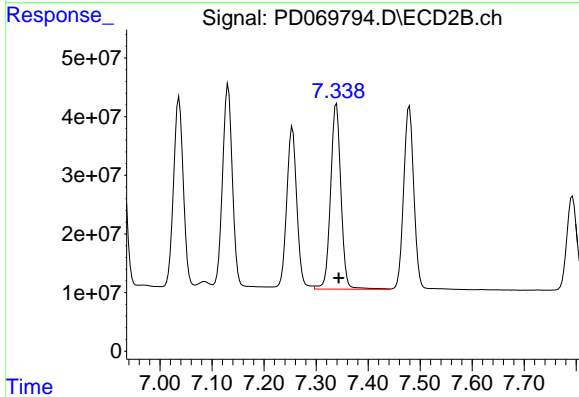
PB145038BS

Manual Integrations

APPROVED

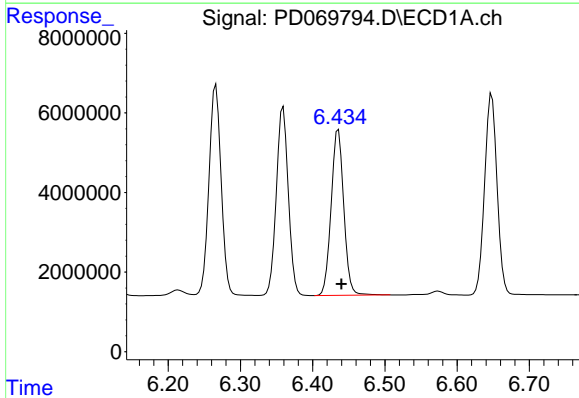
Reviewed By :Abdul Mirza 05/24/2022

Supervised By :Ankita Jodhani 05/24/2022



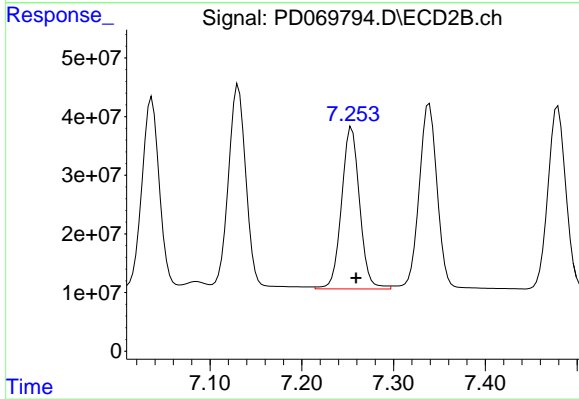
#17 4,4'-DDT

R.T.: 7.339 min
 Delta R.T.: -0.005 min
 Response: 439508788
 Conc: 53.44 ng/ml



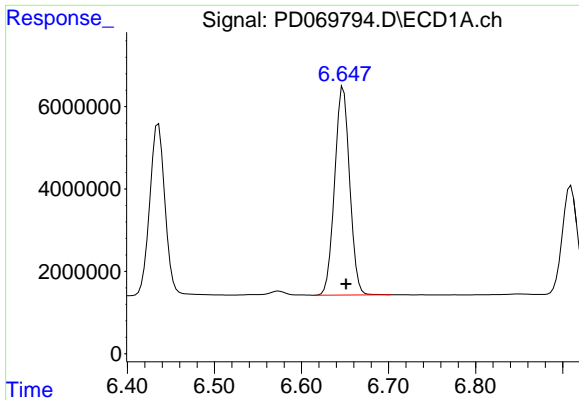
#18 Endrin aldehyde

R.T.: 6.436 min
 Delta R.T.: -0.004 min
 Response: 50644618
 Conc: 58.89 ng/ml



#18 Endrin aldehyde

R.T.: 7.254 min
 Delta R.T.: -0.005 min
 Response: 377625859
 Conc: 59.19 ng/ml



#19 Endosulfan Sulfate

R.T.: 6.648 min
 Delta R.T.: -0.003 min
 Response: 60657257
 Conc: 55.15 ng/ml

Instrument :

ECD_D

ClientSampleId :

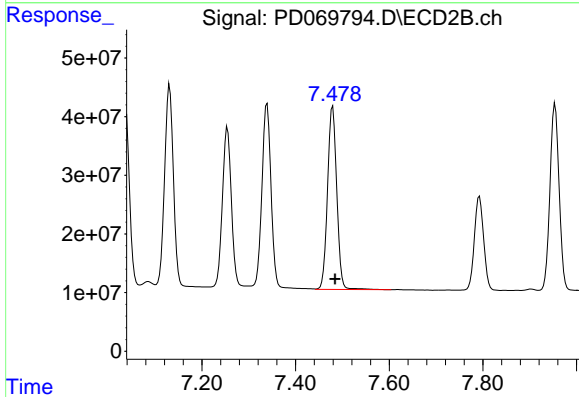
PB145038BS

Manual Integrations

APPROVED

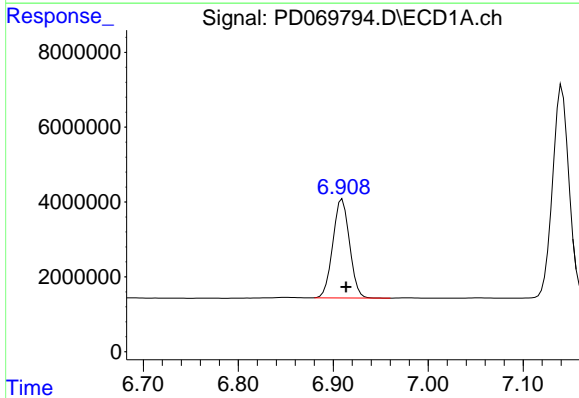
Reviewed By :Abdul Mirza 05/24/2022

Supervised By :Ankita Jodhani 05/24/2022



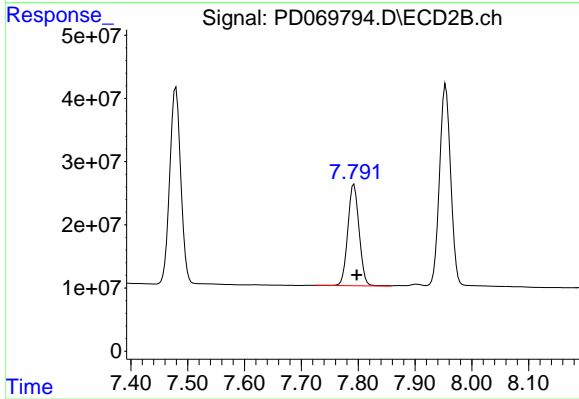
#19 Endosulfan Sulfate

R.T.: 7.479 min
 Delta R.T.: -0.005 min
 Response: 428159587
 Conc: 53.59 ng/ml



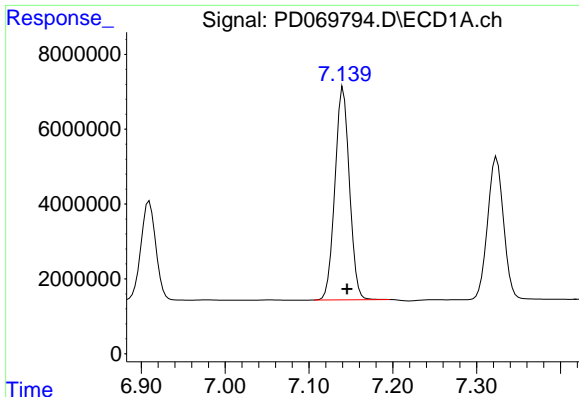
#20 Methoxychlor

R.T.: 6.910 min
 Delta R.T.: -0.004 min
 Response: 32302797
 Conc: 56.04 ng/ml



#20 Methoxychlor

R.T.: 7.793 min
 Delta R.T.: -0.005 min
 Response: 222032213
 Conc: 53.85 ng/ml



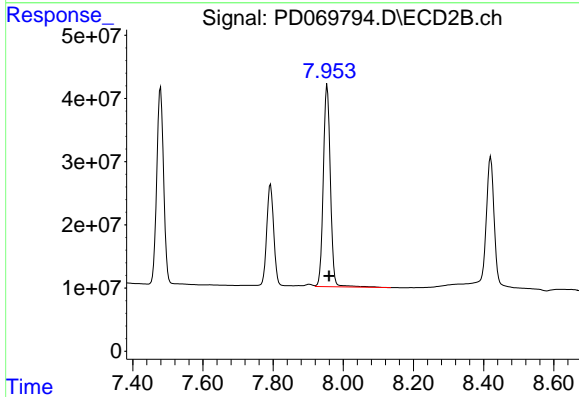
#21 Endrin ketone

R.T.: 7.141 min
 Delta R.T.: -0.004 min
 Response: 68300351
 Conc: 54.52 ng/ml

Instrument :
 ECD_D
 ClientSampleId :
 PB145038BS

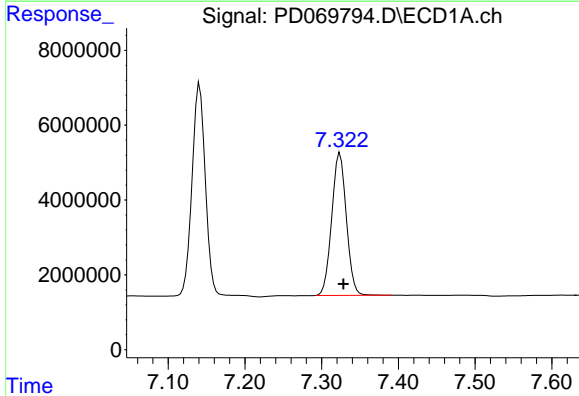
Manual Integrations
 APPROVED

Reviewed By :Abdul Mirza 05/24/2022
 Supervised By :Ankita Jodhani 05/24/2022



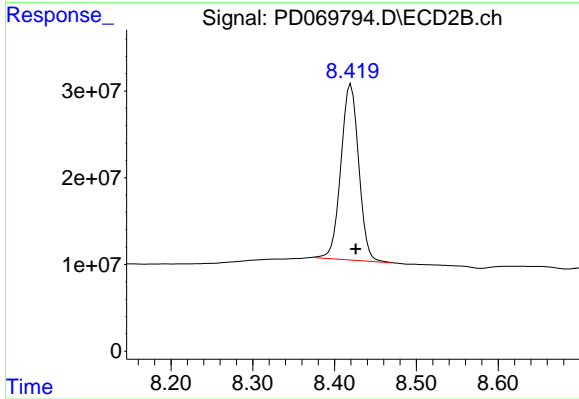
#21 Endrin ketone

R.T.: 7.954 min
 Delta R.T.: -0.005 min
 Response: 447156056
 Conc: 53.53 ng/ml



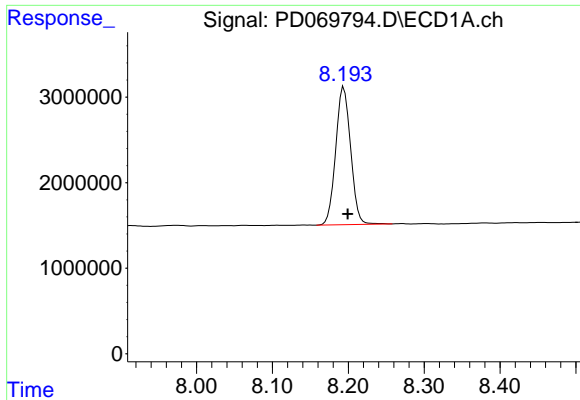
#22 Mirex

R.T.: 7.324 min
 Delta R.T.: -0.004 min
 Response: 50326211
 Conc: 50.28 ng/ml



#22 Mirex

R.T.: 8.419 min
 Delta R.T.: -0.007 min
 Response: 305681480
 Conc: 52.05 ng/ml m



#28 Decachlorobiphenyl

R.T.: 8.194 min
 Delta R.T.: -0.005 min
 Response: 22015656
 Conc: 20.41 ng/ml

Instrument :

ECD_D

ClientSampleId :

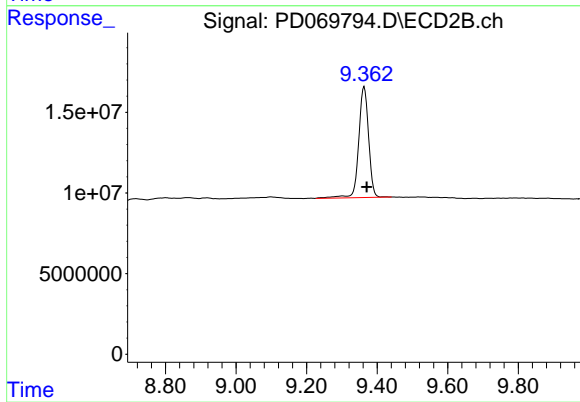
PB145038BS

Manual Integrations

APPROVED

Reviewed By :Abdul Mirza 05/24/2022

Supervised By :Ankita Jodhani 05/24/2022



#28 Decachlorobiphenyl

R.T.: 9.363 min
 Delta R.T.: -0.008 min
 Response: 133963504
 Conc: 22.35 ng/ml