

Data Path : Z:\pestpcbsrv\HPCHEM1\ECD\_D\Data\PD052422\  
 Data File : PD069802.D  
 Signal(s) : Signal #1: ECD1A.ch Signal #2: ECD2B.ch  
 Acq On : 23 May 2022 21:01  
 Operator : AR\AJ  
 Sample : N2894-16  
 Misc :  
 ALS Vial : 16 Sample Multiplier: 1

**Instrument :**  
 ECD\_D  
**ClientSampleId :**  
 P008-SS002-1218-01

**Manual Integrations**  
**APPROVED**

Reviewed By :Abdul Mirza 05/24/2022  
 Supervised By :Ankita Jodhani 05/24/2022

Integration File signal 1: autoint1.e  
 Integration File signal 2: autoint2.e  
 Quant Time: May 24 02:42:56 2022  
 Quant Method : Z:\pestpcbsrv\HPCHEM1\ECD\_D\Method\PD052022.M  
 Quant Title : GC Extractables  
 QLast Update : Mon May 23 02:08:05 2022  
 Response via : Initial Calibration  
 Integrator: ChemStation

Volume Inj. : 2 µl  
 Signal #1 Phase : ZB-MR2 Signal #2 Phase: ZB-MR1  
 Signal #1 Info : 30M x 0.32mm x0.2 Signal #2 Info : 30M x 0.32mm x 0.50µm

| Compound                    | RT#1  | RT#2  | Resp#1   | Resp#2   | ng/ml  | ng/ml    |
|-----------------------------|-------|-------|----------|----------|--------|----------|
| -----                       |       |       |          |          |        |          |
| System Monitoring Compounds |       |       |          |          |        |          |
| 1) SA Tetrachlo...          | 3.442 | 4.170 | 19894592 | 203.4E6  | 19.853 | 21.291   |
| 28) SA Decachlor...         | 8.194 | 9.363 | 13793370 | 97819755 | 12.788 | 16.322m# |

Target Compounds

(f)=RT Delta > 1/2 Window (#)=Amounts differ by > 25% (m)=manual int.

Data Path : Z:\pestpcbsrv\HPCHEM1\ECD\_D\Data\PD052422\  
 Data File : PD069802.D  
 Signal(s) : Signal #1: ECD1A.ch Signal #2: ECD2B.ch  
 Acq On : 23 May 2022 21:01  
 Operator : AR\AJ  
 Sample : N2894-16  
 Misc :  
 ALS Vial : 16 Sample Multiplier: 1

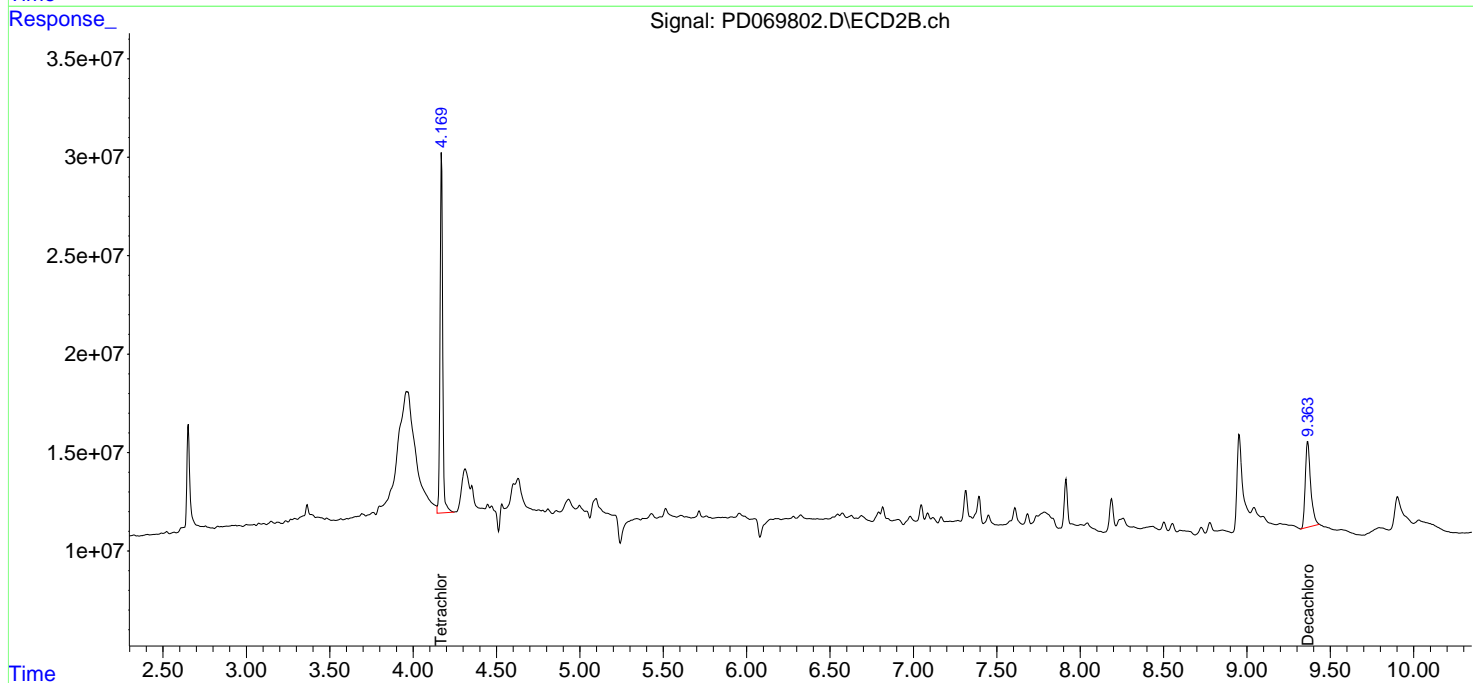
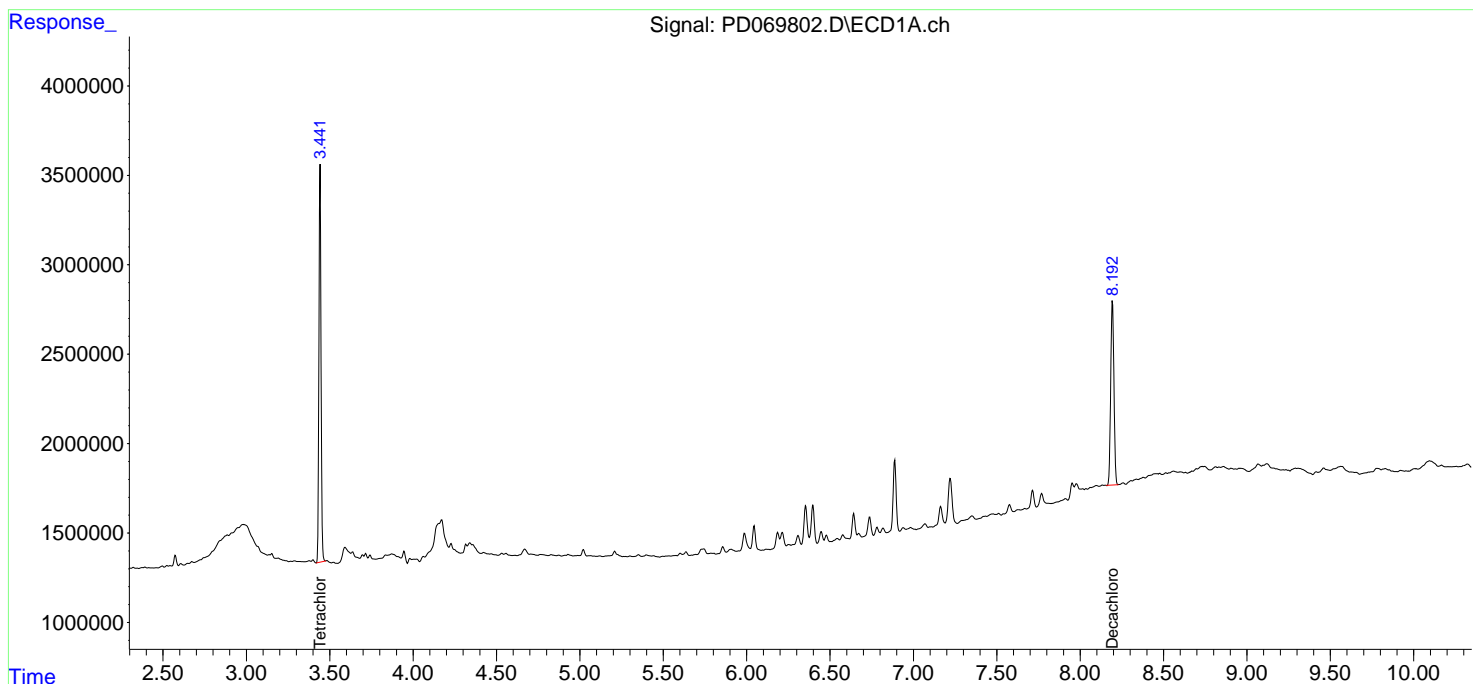
**Instrument :**  
 ECD\_D  
**ClientSampleId :**  
 P008-SS002-1218-01

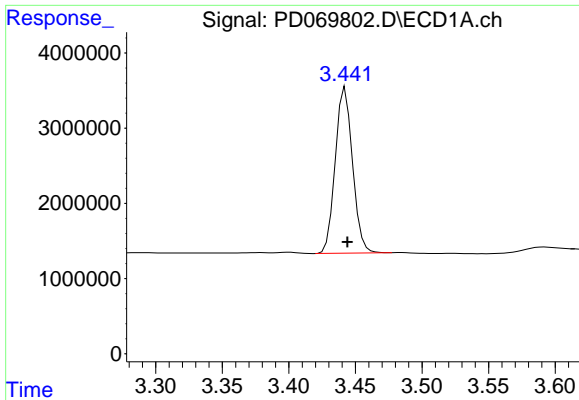
**Manual Integrations**  
**APPROVED**

Reviewed By :Abdul Mirza 05/24/2022  
 Supervised By :Ankita Jodhani 05/24/2022

Integration File signal 1: autoint1.e  
 Integration File signal 2: autoint2.e  
 Quant Time: May 24 02:42:56 2022  
 Quant Method : Z:\pestpcbsrv\HPCHEM1\ECD\_D\Method\PD052022.M  
 Quant Title : GC Extractables  
 QLast Update : Mon May 23 02:08:05 2022  
 Response via : Initial Calibration  
 Integrator: ChemStation

Volume Inj. : 2 µl  
 Signal #1 Phase : ZB-MR2 Signal #2 Phase: ZB-MR1  
 Signal #1 Info : 30M x 0.32mm x0.2 Signal #2 Info : 30M x 0.32mm x 0.50µm



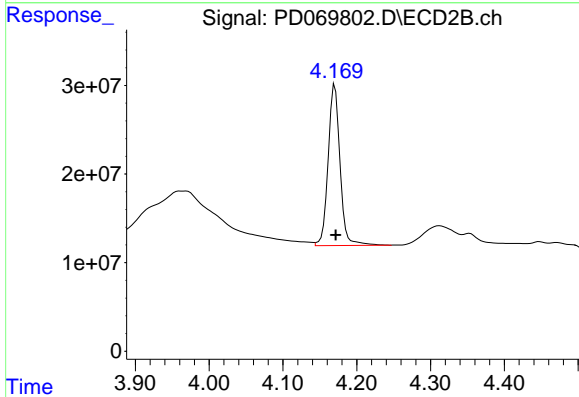


#1 Tetrachloro-m-xylene  
 R.T.: 3.442 min  
 Delta R.T.: -0.002 min  
 Response: 19894592  
 Conc: 19.85 ng/ml

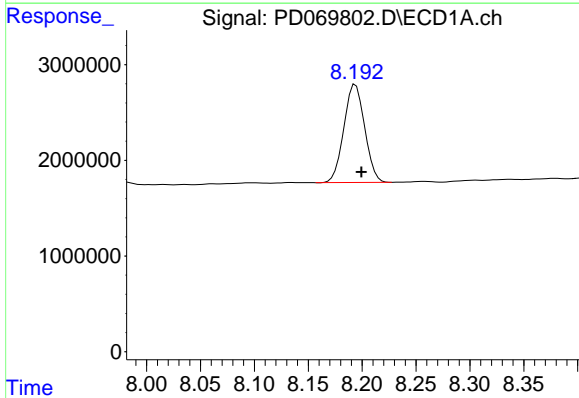
Instrument :  
 ECD\_D  
 ClientSampleId :  
 P008-SS002-1218-01

Manual Integrations  
**APPROVED**

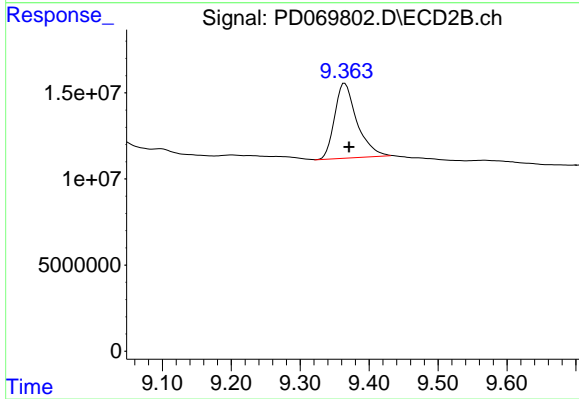
Reviewed By :Abdul Mirza 05/24/2022  
 Supervised By :Ankita Jodhani 05/24/2022



#1 Tetrachloro-m-xylene  
 R.T.: 4.170 min  
 Delta R.T.: -0.001 min  
 Response: 203416475  
 Conc: 21.29 ng/ml



#28 Decachlorobiphenyl  
 R.T.: 8.194 min  
 Delta R.T.: -0.005 min  
 Response: 13793370  
 Conc: 12.79 ng/ml



#28 Decachlorobiphenyl  
 R.T.: 9.363 min  
 Delta R.T.: -0.008 min  
 Response: 97819755  
 Conc: 16.32 ng/ml m