

Data Path : Z:\pestpcbsrv\HPCHEM1\ECD_D\Data\PD052524\
 Data File : PD083034.D
 Signal(s) : Signal #1: ECD1A.ch Signal #2: ECD2B.ch
 Acq On : 24 May 2024 02:14
 Operator : ARVAJ
 Sample : INDA326
 Misc :
 ALS Vial : 14 Sample Multiplier: 1

Instrument :

ECD_D

Lab Sampled :

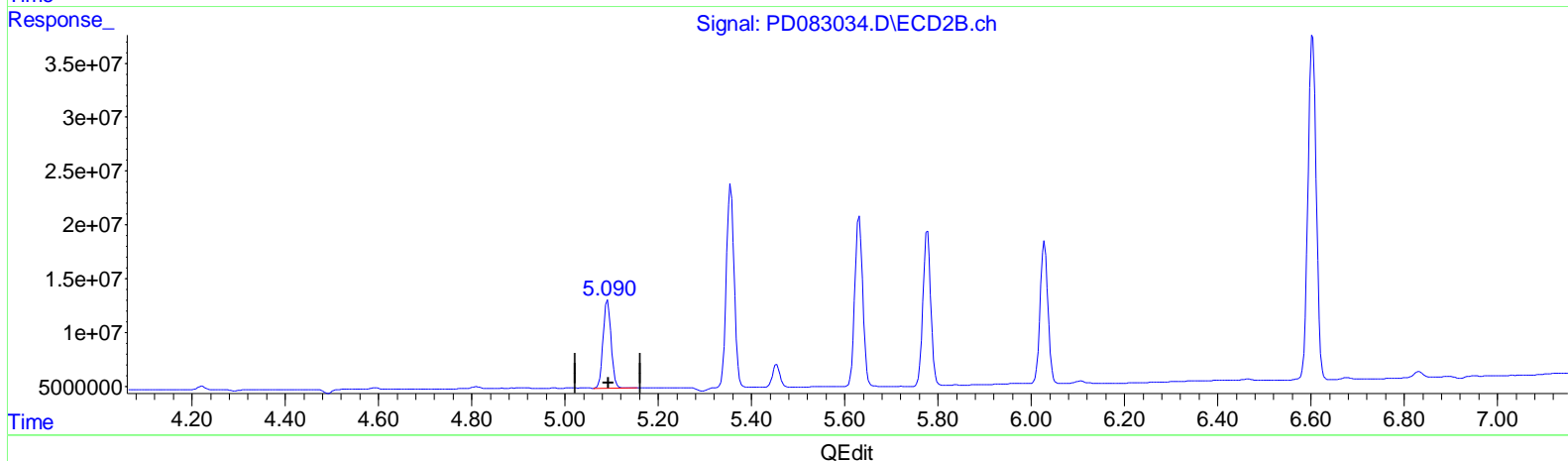
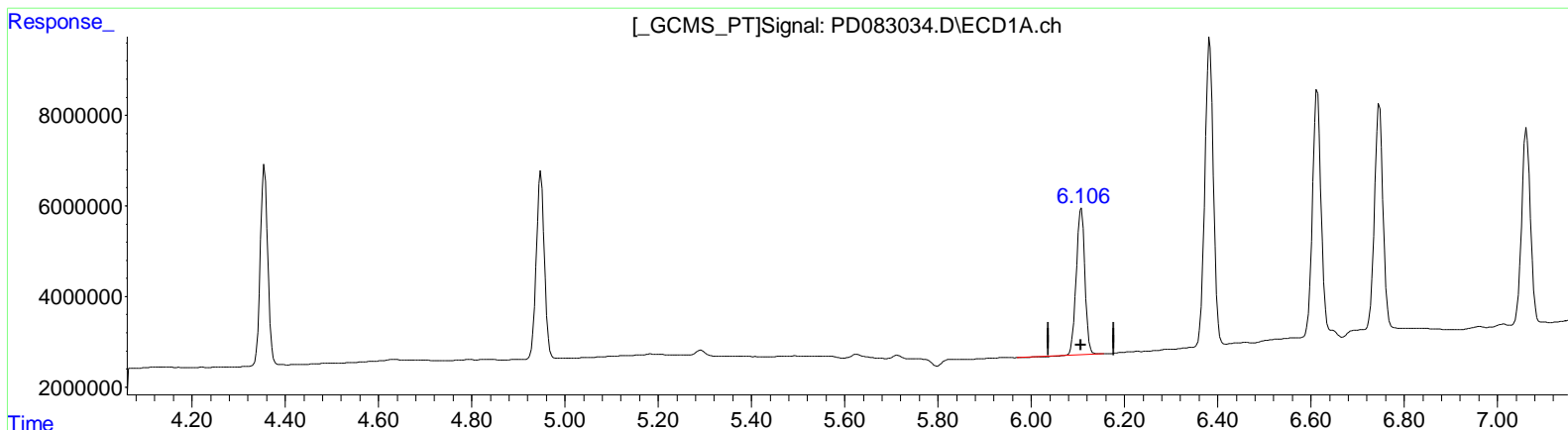
INDA326

Manual Integrations APPROVED

Reviewed By : Abdul Mirza 05/28/2024
 Supervised By : Ankita Jodhani 05/28/2024

Integration File signal 1: autoint1.e
 Integration File signal 2: autoint2.e
 Quant Time: May 24 06:20:05 2024
 Quant Method : Z:\pestpcbsrv\HPCHEM1\ECD_D\Method\PD051924CLP.M
 Quant Title : GC Extractables
 QLast Update : Fri May 17 05:17:58 2024
 Response via : Initial Calibration
 Integrator: ChemStation

Volume Inj. : 1 µl
 Signal #1 Phase : ZB-MR1 Signal #2 Phase: ZB-MR2
 Signal #1 Info : 30M x 0.32mm x 0.5 Signal #2 Info : 30M x 0.32mm x 0.25µm



(9) Endosulfan I (A)
 6.107min 19.970 ng/ml
 response 41554004

(9) Endosulfan I #2 (A)
 5.091min 21.344 ng/ml
 response 96259356

Data Path : Z:\pestpcbsrv\HPCHEM1\ECD_D\Data\PD052524\
 Data File : PD083034.D
 Signal (s) : Signal #1: ECD1A.ch Signal #2: ECD2B.ch
 Acq On : 24 May 2024 02:14
 Operator : ARVAJ
 Sample : INDA326
 Misc :
 ALS Vial : 14 Sample Multiplier: 1

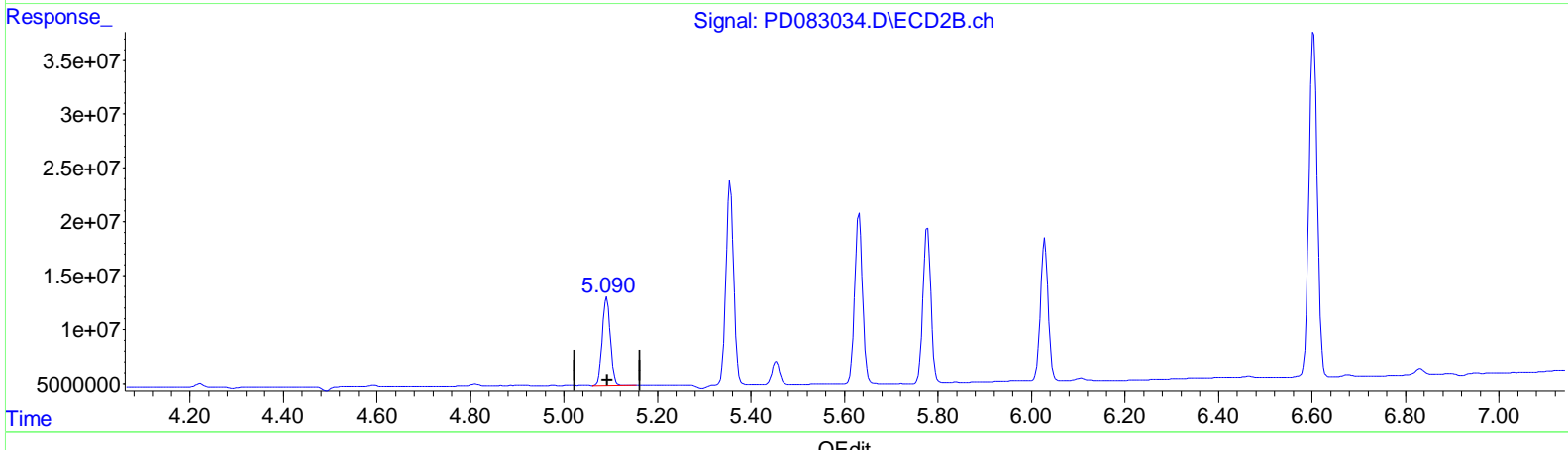
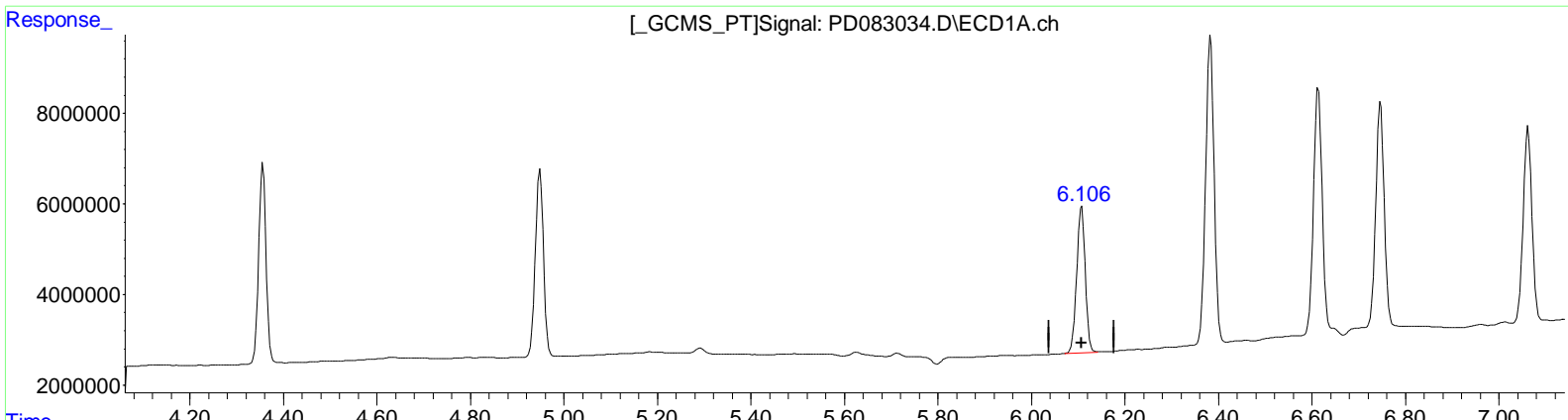
Instrument :
 ECD_D
Lab Sampled :
 INDA326

Manual Integrations APPROVED

Reviewed By : Abdul Mirza 05/28/2024
 Supervised By : Ankita Jodhani 05/28/2024

Integration File signal 1: autoint1.e
 Integration File signal 2: autoint2.e
 Quant Time: May 24 06:20:05 2024
 Quant Method : Z:\pestpcbsrv\HPCHEM1\ECD_D\Method\PD051924CLP.M
 Quant Title : GC Extractables
 QLast Update : Fri May 17 05:17:58 2024
 Response via : Initial Calibration
 Integrator: ChemStation

Volume Inj. : 1 µl
 Signal #1 Phase : ZB-MR1 Signal #2 Phase: ZB-MR2
 Signal #1 Info : 30M x 0.32mm x 0.5 Signal #2 Info : 30M x 0.32mm x 0.25µm



(9) Endosulfan I (A)
 6.106min 20.134 ng/ml m
 response 41896345

(9) Endosulfan I #2 (A)
 5.091min 21.344 ng/ml
 response 96259356