

Data Path : Z:\pestpcbsrv\HPCHEM1\ECD_D\Data\PD052621\
 Data File : PD063287.D
 Signal(s) : Signal #1: ECD1A.ch Signal #2: ECD2B.ch
 Acq On : 26 May 2021 11:12
 Operator : AR\AJ
 Sample : 500PPB PEST SPIKE
 Misc :
 ALS Vial : 5 Sample Multiplier: 1

Instrument :
 ECD_D
 ClientSampled :

Integration File signal 1: autoint1.e
 Integration File signal 2: autoint2.e
 Quant Time: May 27 05:49:11 2021
 Quant Method : Z:\pestpcbsrv\HPCHEM1\ECD_D\Method\PD051721.M
 Quant Title : GC Extractables
 QLast Update : Mon May 24 14:48:18 2021
 Response via : Initial Calibration
 Integrator: ChemStation

Volume Inj. : 2 µl
 Signal #1 Phase : ZB-MR2 Signal #2 Phase: ZB-MR1
 Signal #1 Info : 30M x 0.32mm x0.2 Signal #2 Info : 30M x 0.32mm x 0.50µm

	Compound	RT#1	RT#2	Resp#1	Resp#2	ng/ml	ng/ml

System Monitoring Compounds							
1)	SA Tetrachlo...	3.446	3.968	486443	152.7E6	0.442	13.178 #
28)	SA Decachlor...	8.208	9.029	692778	5687850	0.550	0.558
Target Compounds							
2)	A alpha-BHC	3.885	4.360	1022.6E6	8291.9E6	589.755	430.647 #
3)	MA gamma-BHC...	4.167	4.644	935.7E6	7604.5E6	575.484	440.611
4)	MA Heptachlor	4.469	5.153	910.9E6	7494.4E6	579.056	451.997
5)	MB Aldrin	4.717	5.457	910.9E6	7547.1E6	594.564	452.140
6)	B beta-BHC	4.419	4.815	377.5E6	3263.3E6	562.224	439.942
7)	B delta-BHC	4.623	5.032	710.6E6	5524.1E6	431.057	395.372
8)	B Heptachlo...	5.160	5.843	833.2E6	6593.8E6	578.176	431.095 #
9)	A Endosulfan I	5.499	6.200	787.7E6	6436.4E6	580.507	453.115
10)	B gamma-Chl...	5.387	6.077	873.6E6	7291.5E6	595.550	467.737
11)	B alpha-Chl...	5.446	6.150	833.2E6	6807.5E6	577.078	459.357
12)	B 4,4'-DDE	5.610	6.307	869.4E6	7109.9E6	606.020	471.036
13)	MA Dieldrin	5.743	6.456	888.1E6	7083.7E6	600.225	467.155
14)	MA Endrin	6.001	6.674	646.2E6	5045.1E6	483.178	395.423
15)	B Endosulfa...	6.274	6.884	715.9E6	5800.3E6	575.400	483.696
16)	A 4,4'-DDD	6.127	6.797	752.2E6	6018.1E6	625.321	496.029
17)	MA 4,4'-DDT	6.367	7.095	693.4E6	5332.9E6	606.643	472.952
18)	B Endrin al...	6.442	7.008	646.1E6	5216.9E6	607.798	512.240
19)	B Endosulfa...	6.656	7.231	657.8E6	5773.9E6	545.778	470.567
20)	A Methoxychlor	6.914	7.554	312.3E6	2487.5E6	465.362	433.621
21)	B Endrin ke...	7.148	7.702	915.1E6	6213.2E6	619.260	517.963
22)	Mirex	7.335	8.155	557.1E6	3722.2E6	519.196	489.474
24)	Chlordane-2	4.819	5.457f	606873	7547.1E6	10.675	13342.230 #
25)	Chlordane-3	5.387	6.077	873.6E6	7291.5E6	5298.734	3087.290 #
26)	Chlordane-4	5.446	6.150	833.2E6	6807.5E6	6164.184	2517.321 #
27)	Chlordane-5	6.274	0.000	715.9E6	0	14359.575	N.D. #

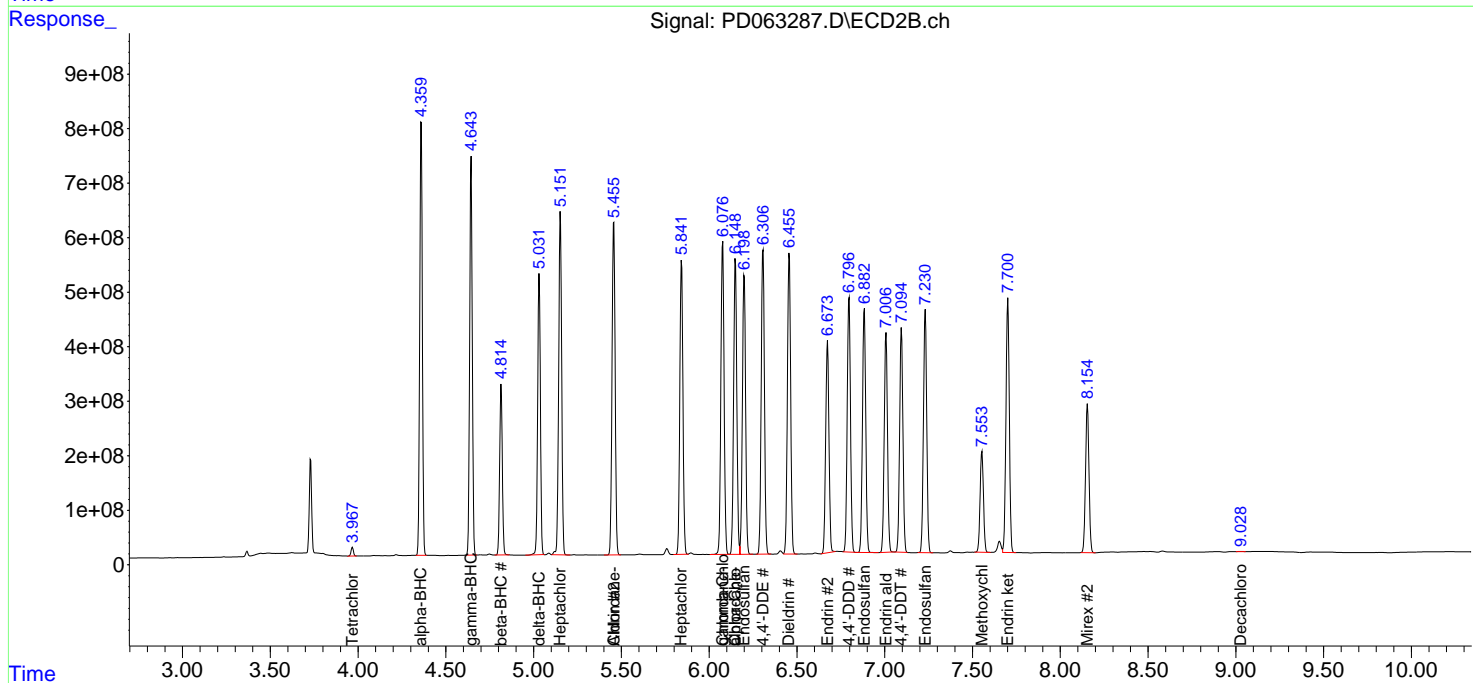
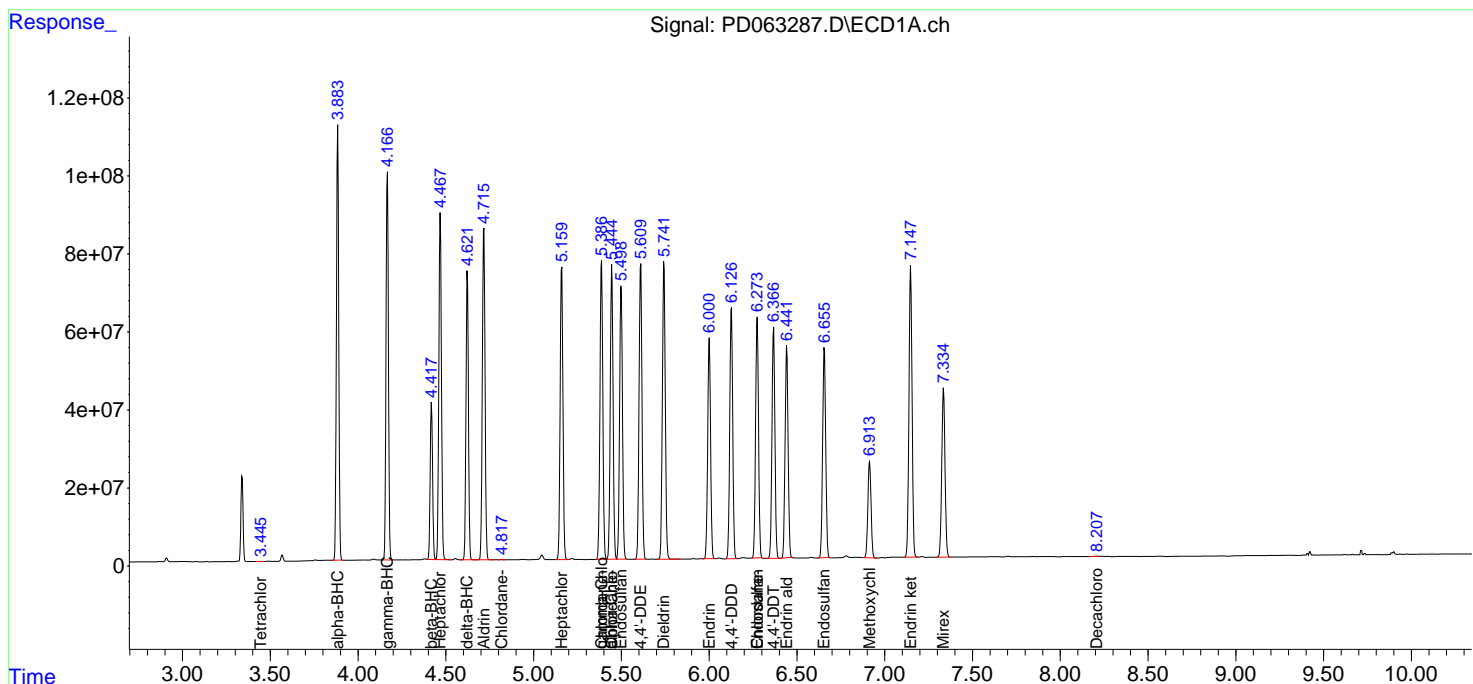
(f)=RT Delta > 1/2 Window (#)=Amounts differ by > 25% (m)=manual int.

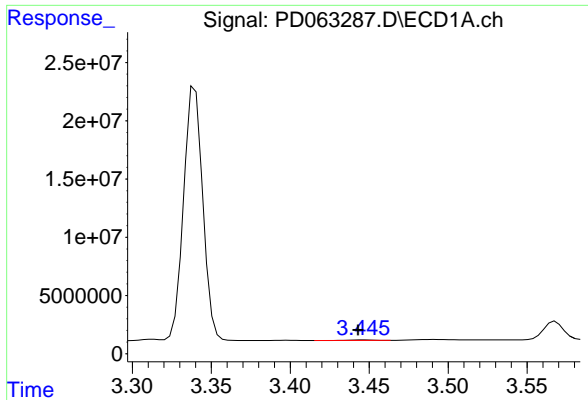
Data Path : Z:\pestpcbsrv\HPCHEM1\ECD_D\Data\PD052621\
 Data File : PD063287.D
 Signal(s) : Signal #1: ECD1A.ch Signal #2: ECD2B.ch
 Acq On : 26 May 2021 11:12
 Operator : AR\AJ
 Sample : 500PPB PEST SPIKE
 Misc :
 ALS Vial : 5 Sample Multiplier: 1

Instrument :
 ECD_D
 ClientSampled :

Integration File signal 1: autoint1.e
 Integration File signal 2: autoint2.e
 Quant Time: May 27 05:49:11 2021
 Quant Method : Z:\pestpcbsrv\HPCHEM1\ECD_D\Method\PD051721.M
 Quant Title : GC Extractables
 QLast Update : Mon May 24 14:48:18 2021
 Response via : Initial Calibration
 Integrator: ChemStation

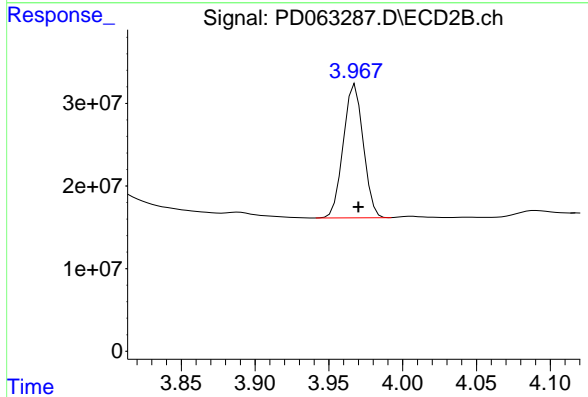
Volume Inj. : 2 µl
 Signal #1 Phase : ZB-MR2 Signal #2 Phase: ZB-MR1
 Signal #1 Info : 30M x 0.32mm x0.2 Signal #2 Info : 30M x 0.32mm x 0.50µm



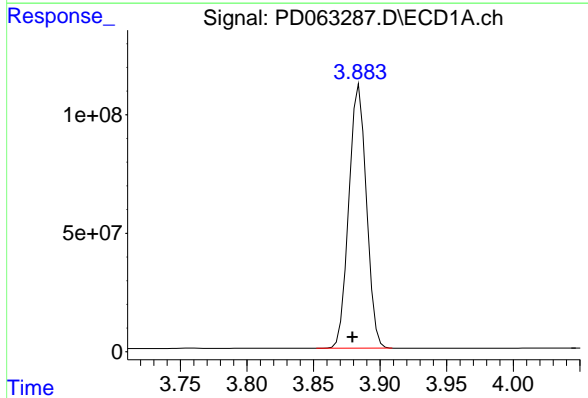


#1 Tetrachloro-m-xylene
 R.T.: 3.446 min
 Delta R.T.: 0.003 min
 Response: 486443
 Conc: 0.44 ng/ml

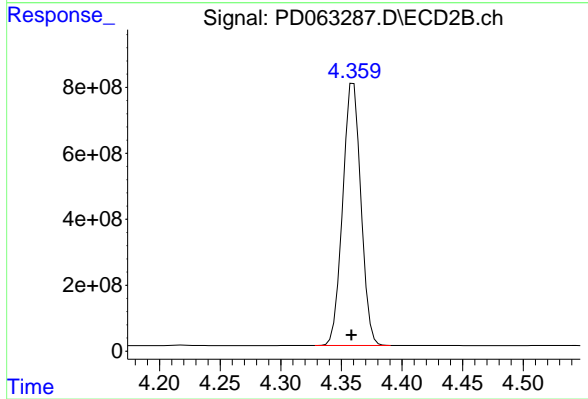
Instrument :
 ECD_D
 ClientSampleId :



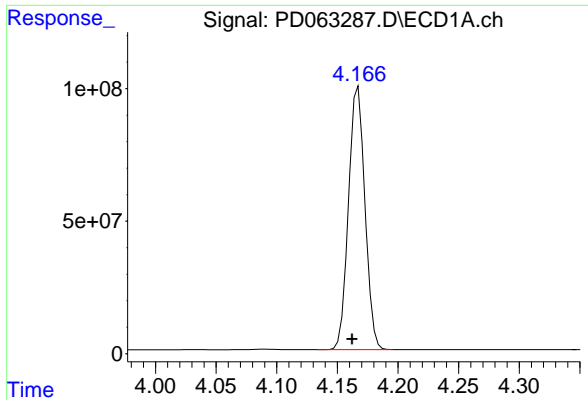
#1 Tetrachloro-m-xylene
 R.T.: 3.968 min
 Delta R.T.: -0.002 min
 Response: 152709891
 Conc: 13.18 ng/ml



#2 alpha-BHC
 R.T.: 3.885 min
 Delta R.T.: 0.005 min
 Response: 1022558086
 Conc: 589.75 ng/ml



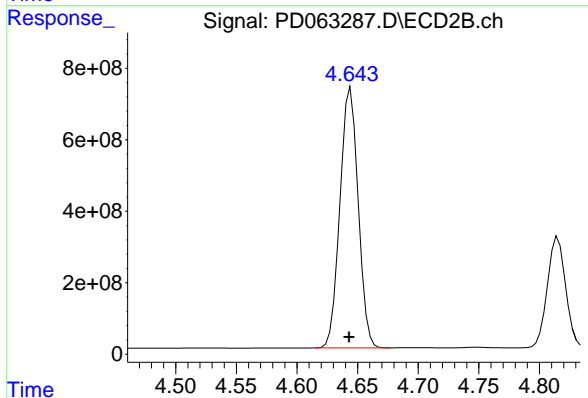
#2 alpha-BHC
 R.T.: 4.360 min
 Delta R.T.: 0.002 min
 Response: 8291910405
 Conc: 430.65 ng/ml



#3 gamma-BHC (Lindane)

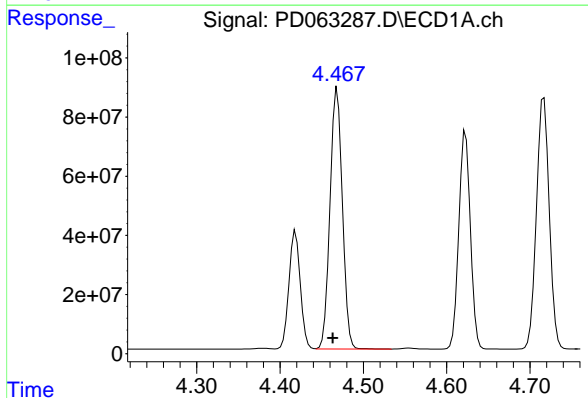
R.T.: 4.167 min
Delta R.T.: 0.005 min
Response: 935664054
Conc: 575.48 ng/ml

Instrument :
ECD_D
ClientSampled :



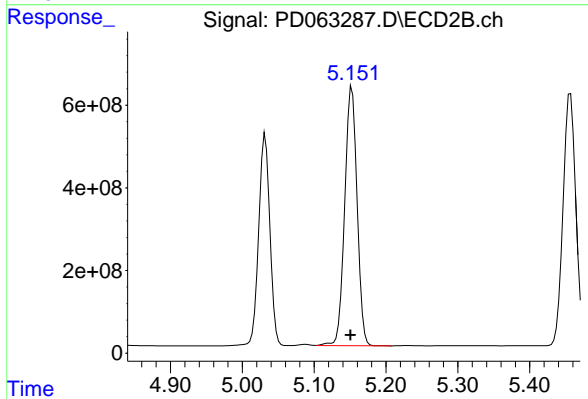
#3 gamma-BHC (Lindane)

R.T.: 4.644 min
Delta R.T.: 0.002 min
Response: 7604483451
Conc: 440.61 ng/ml



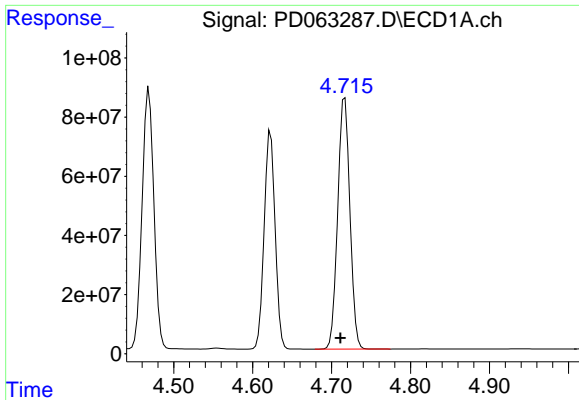
#4 Heptachlor

R.T.: 4.469 min
Delta R.T.: 0.005 min
Response: 910906960
Conc: 579.06 ng/ml



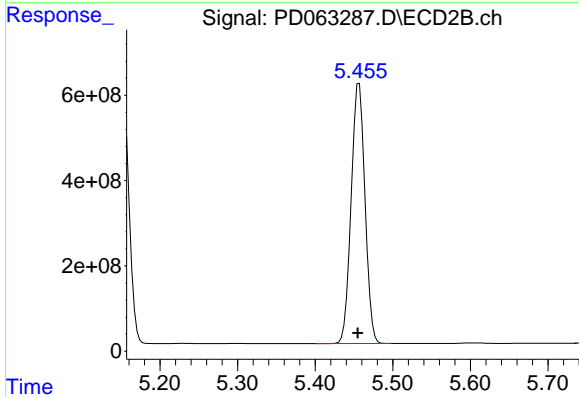
#4 Heptachlor

R.T.: 5.153 min
Delta R.T.: 0.002 min
Response: 7494411988
Conc: 452.00 ng/ml

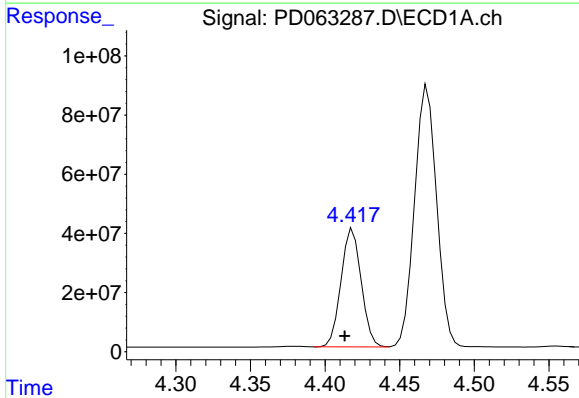


#5 Aldrin
 R.T.: 4.717 min
 Delta R.T.: 0.005 min
 Response: 910860303
 Conc: 594.56 ng/ml

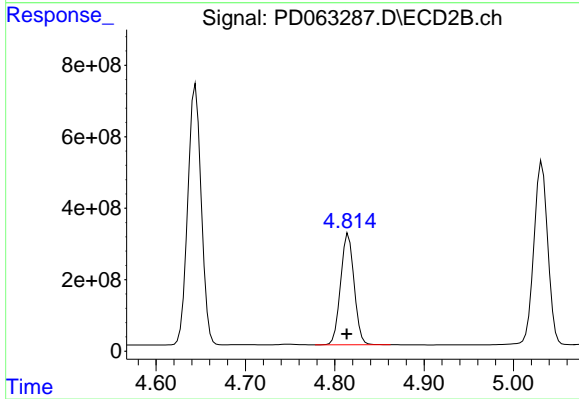
Instrument :
 ECD_D
 ClientSampleId :



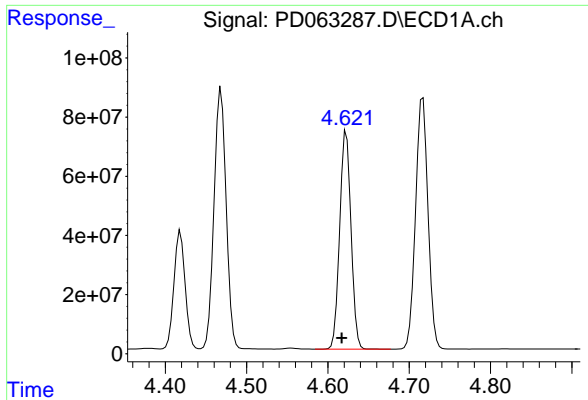
#5 Aldrin
 R.T.: 5.457 min
 Delta R.T.: 0.002 min
 Response: 7547131011
 Conc: 452.14 ng/ml



#6 beta-BHC
 R.T.: 4.419 min
 Delta R.T.: 0.005 min
 Response: 377464695
 Conc: 562.22 ng/ml

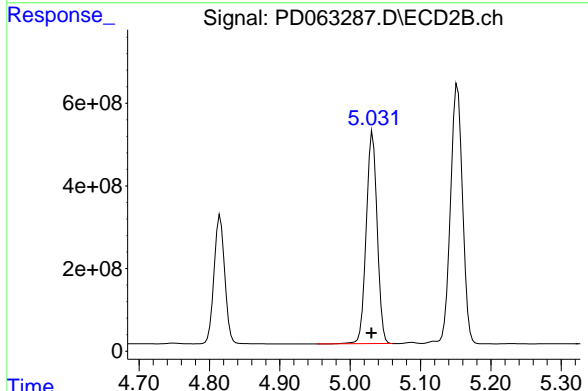


#6 beta-BHC
 R.T.: 4.815 min
 Delta R.T.: 0.002 min
 Response: 3263262897
 Conc: 439.94 ng/ml

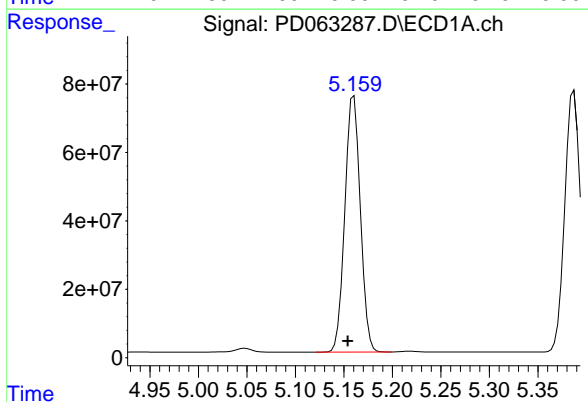


#7 delta-BHC
 R.T.: 4.623 min
 Delta R.T.: 0.006 min
 Response: 710551992
 Conc: 431.06 ng/ml

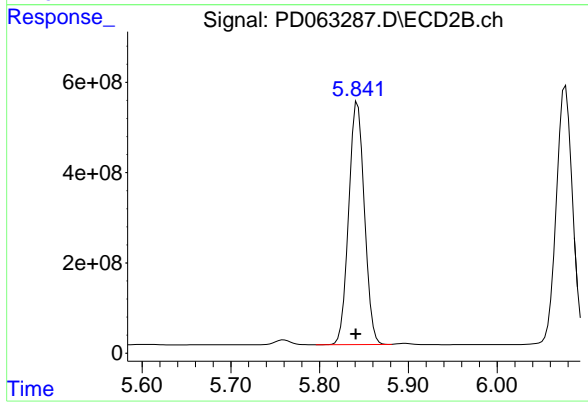
Instrument :
 ECD_D
 ClientSampleId :



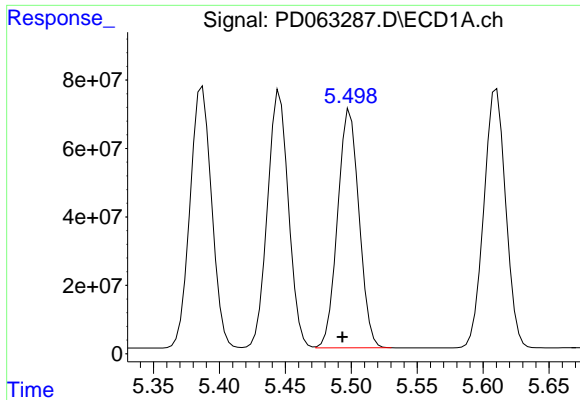
#7 delta-BHC
 R.T.: 5.032 min
 Delta R.T.: 0.002 min
 Response: 5524118725
 Conc: 395.37 ng/ml



#8 Heptachlor epoxide
 R.T.: 5.160 min
 Delta R.T.: 0.006 min
 Response: 833208603
 Conc: 578.18 ng/ml

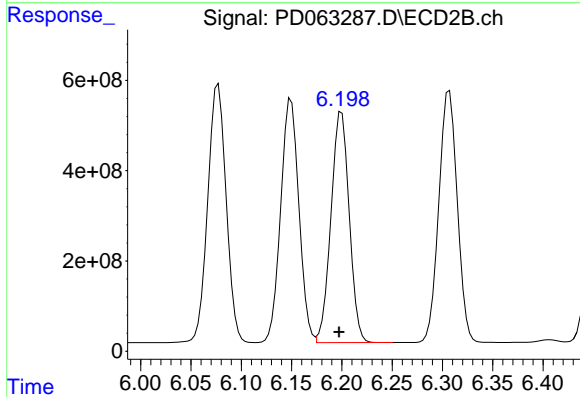


#8 Heptachlor epoxide
 R.T.: 5.843 min
 Delta R.T.: 0.002 min
 Response: 6593837067
 Conc: 431.09 ng/ml

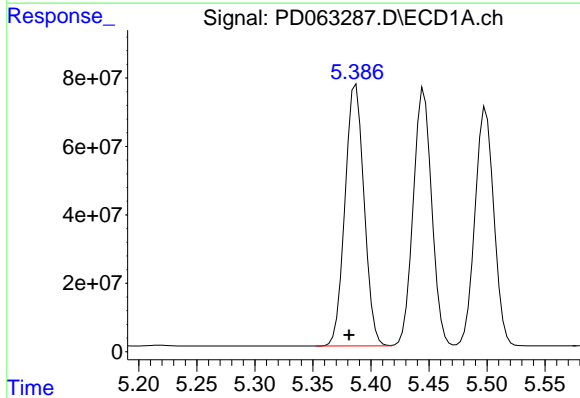


#9 Endosulfan I
 R.T.: 5.499 min
 Delta R.T.: 0.006 min
 Response: 787744259
 Conc: 580.51 ng/ml

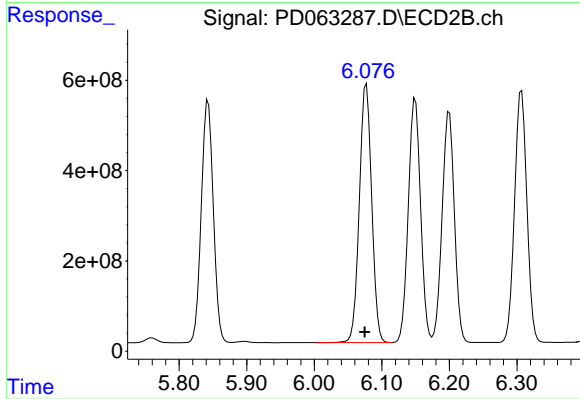
Instrument :
 ECD_D
 ClientSampleId :



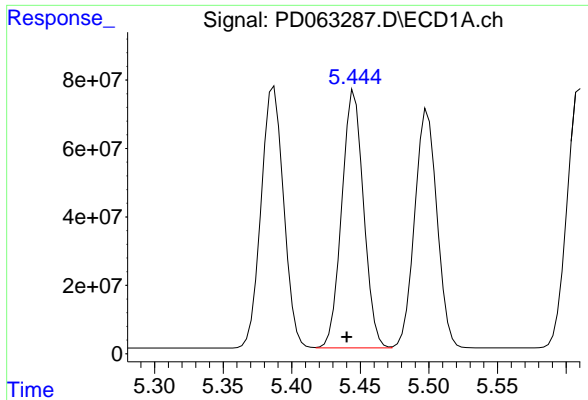
#9 Endosulfan I
 R.T.: 6.200 min
 Delta R.T.: 0.002 min
 Response: 6436428792
 Conc: 453.12 ng/ml



#10 gamma-Chlordane
 R.T.: 5.387 min
 Delta R.T.: 0.006 min
 Response: 873551474
 Conc: 595.55 ng/ml



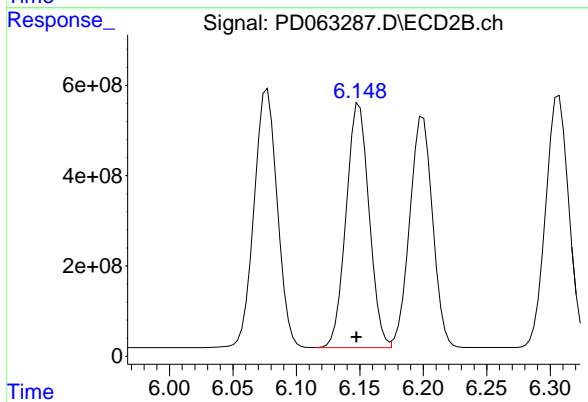
#10 gamma-Chlordane
 R.T.: 6.077 min
 Delta R.T.: 0.003 min
 Response: 7291463676
 Conc: 467.74 ng/ml



#11 alpha-Chlordane

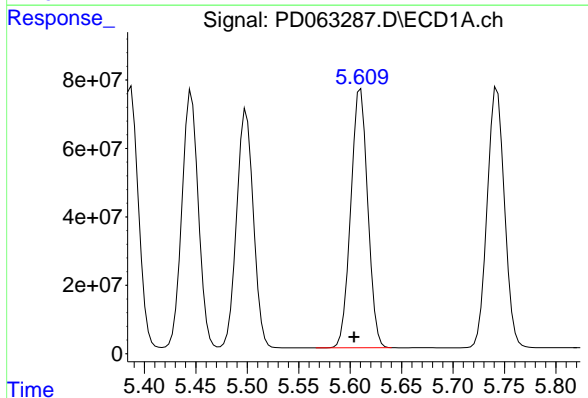
R.T.: 5.446 min
Delta R.T.: 0.006 min
Response: 833154147
Conc: 577.08 ng/ml

Instrument :
ECD_D
ClientSampleId :



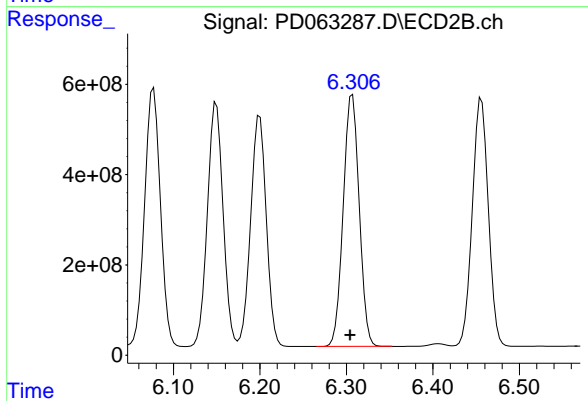
#11 alpha-Chlordane

R.T.: 6.150 min
Delta R.T.: 0.002 min
Response: 6807521451
Conc: 459.36 ng/ml



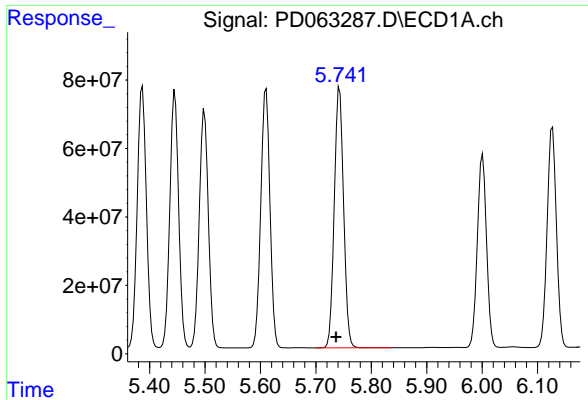
#12 4,4'-DDE

R.T.: 5.610 min
Delta R.T.: 0.006 min
Response: 869411313
Conc: 606.02 ng/ml



#12 4,4'-DDE

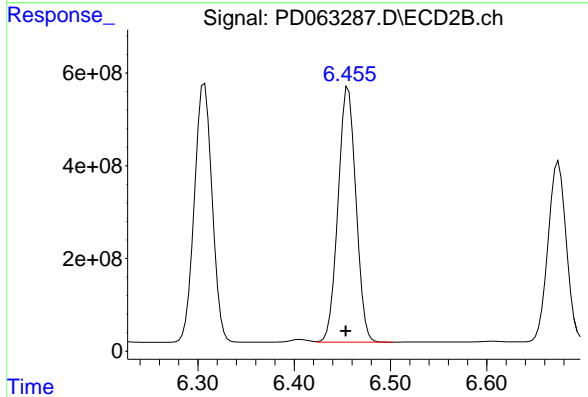
R.T.: 6.307 min
Delta R.T.: 0.003 min
Response: 7109887255
Conc: 471.04 ng/ml



#13 Dieldrin

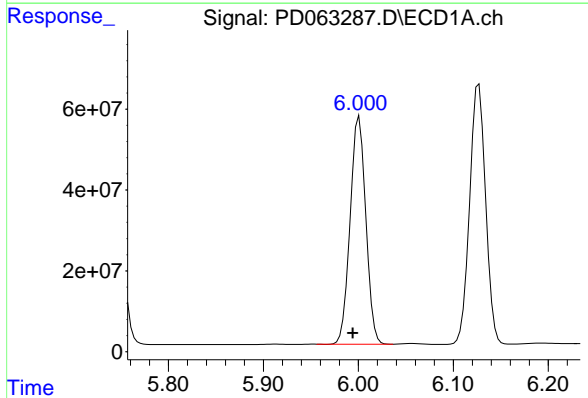
R.T.: 5.743 min
 Delta R.T.: 0.006 min
 Response: 888111065
 Conc: 600.22 ng/ml

Instrument :
 ECD_D
 ClientSampled :



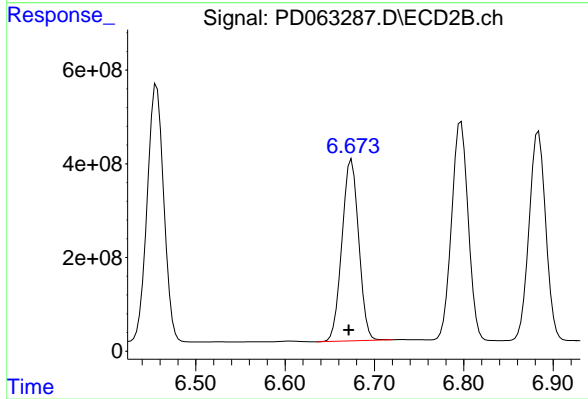
#13 Dieldrin

R.T.: 6.456 min
 Delta R.T.: 0.003 min
 Response: 7083674211
 Conc: 467.15 ng/ml



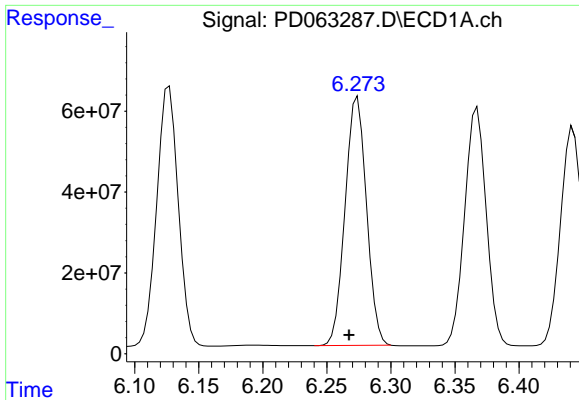
#14 Endrin

R.T.: 6.001 min
 Delta R.T.: 0.007 min
 Response: 646240309
 Conc: 483.18 ng/ml



#14 Endrin

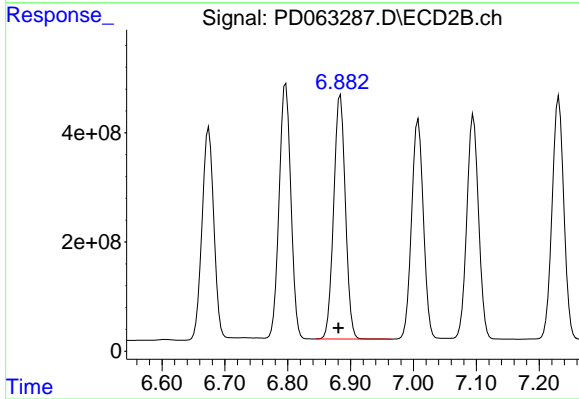
R.T.: 6.674 min
 Delta R.T.: 0.003 min
 Response: 5045061413
 Conc: 395.42 ng/ml



#15 Endosulfan II

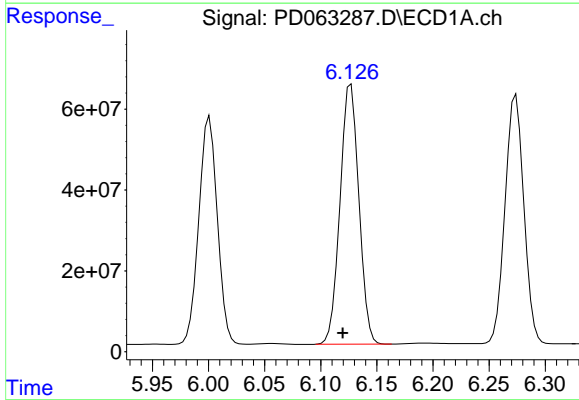
R.T.: 6.274 min
Delta R.T.: 0.007 min
Response: 715868083
Conc: 575.40 ng/ml

Instrument :
ECD_D
ClientSampleId :



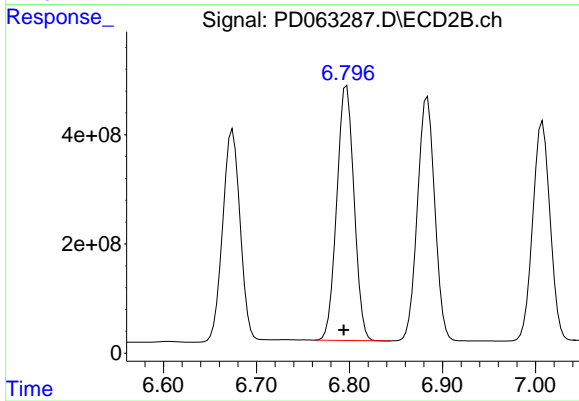
#15 Endosulfan II

R.T.: 6.884 min
Delta R.T.: 0.003 min
Response: 5800306003
Conc: 483.70 ng/ml



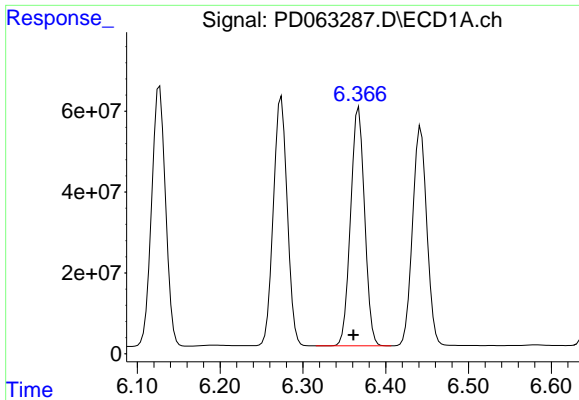
#16 4,4'-DDD

R.T.: 6.127 min
Delta R.T.: 0.007 min
Response: 752240319
Conc: 625.32 ng/ml



#16 4,4'-DDD

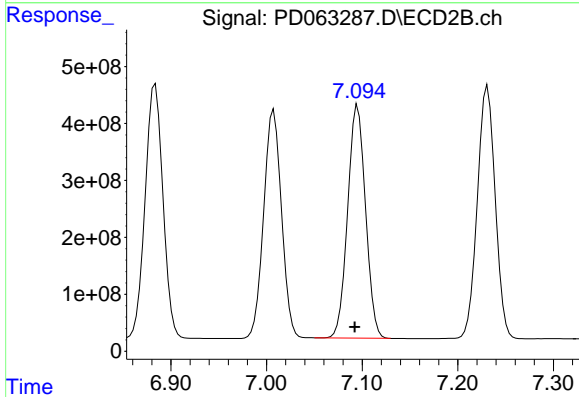
R.T.: 6.797 min
Delta R.T.: 0.003 min
Response: 6018060425
Conc: 496.03 ng/ml



#17 4,4'-DDT

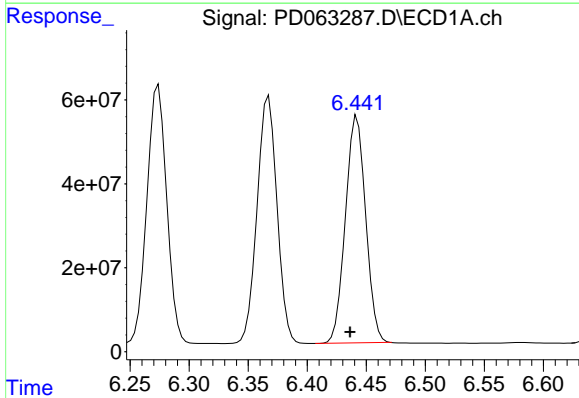
R.T.: 6.367 min
 Delta R.T.: 0.006 min
 Response: 693369617
 Conc: 606.64 ng/ml

Instrument :
 ECD_D
 ClientSampled :



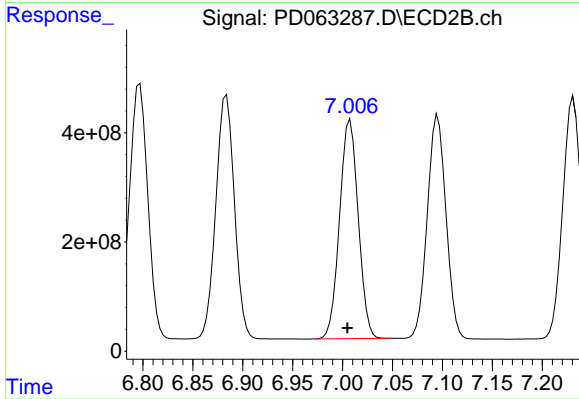
#17 4,4'-DDT

R.T.: 7.095 min
 Delta R.T.: 0.003 min
 Response: 5332885496
 Conc: 472.95 ng/ml



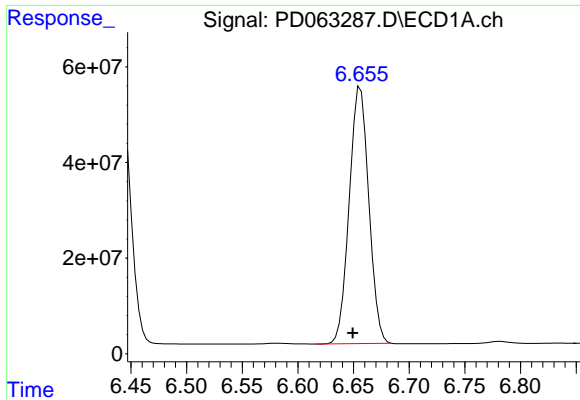
#18 Endrin aldehyde

R.T.: 6.442 min
 Delta R.T.: 0.006 min
 Response: 646064360
 Conc: 607.80 ng/ml



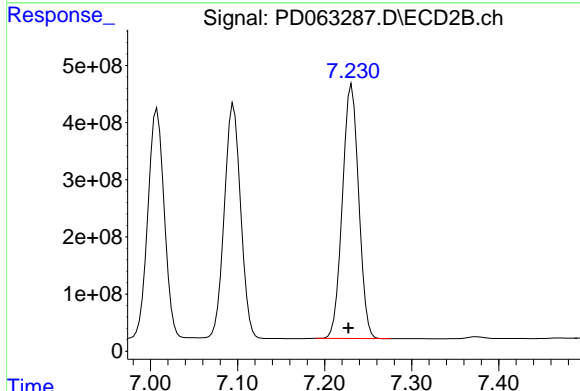
#18 Endrin aldehyde

R.T.: 7.008 min
 Delta R.T.: 0.003 min
 Response: 5216949145
 Conc: 512.24 ng/ml

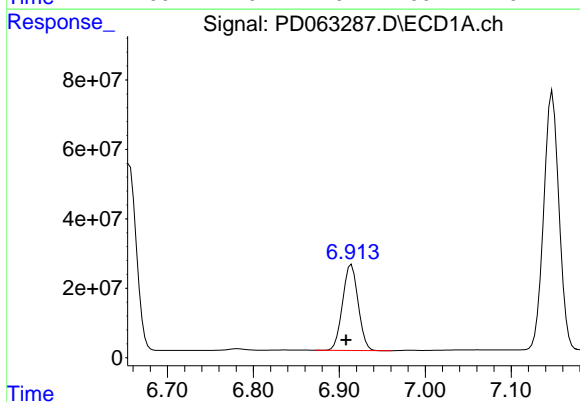


#19 Endosulfan Sulfate
 R.T.: 6.656 min
 Delta R.T.: 0.007 min
 Response: 657820402
 Conc: 545.78 ng/ml

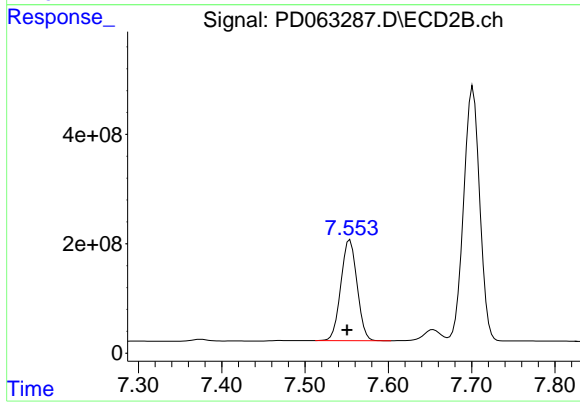
Instrument :
 ECD_D
 ClientSampled :



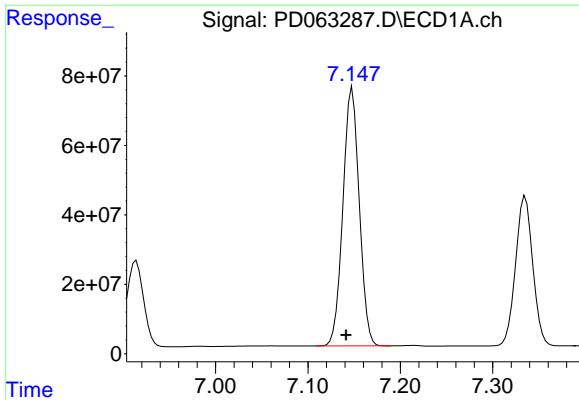
#19 Endosulfan Sulfate
 R.T.: 7.231 min
 Delta R.T.: 0.004 min
 Response: 5773863685
 Conc: 470.57 ng/ml



#20 Methoxychlor
 R.T.: 6.914 min
 Delta R.T.: 0.006 min
 Response: 312288099
 Conc: 465.36 ng/ml

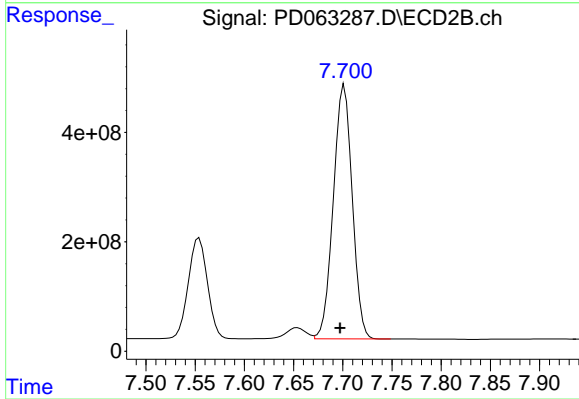


#20 Methoxychlor
 R.T.: 7.554 min
 Delta R.T.: 0.004 min
 Response: 2487529796
 Conc: 433.62 ng/ml

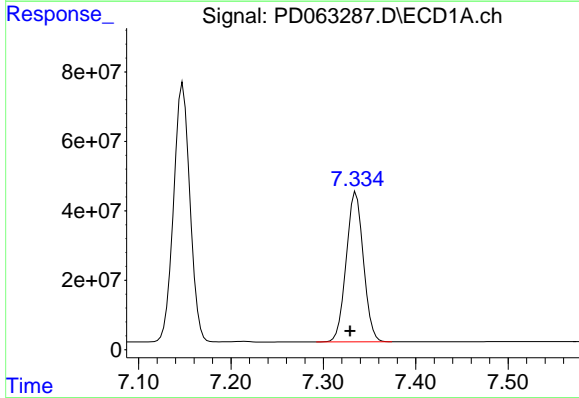


#21 Endrin ketone
 R.T.: 7.148 min
 Delta R.T.: 0.007 min
 Response: 915096948
 Conc: 619.26 ng/ml

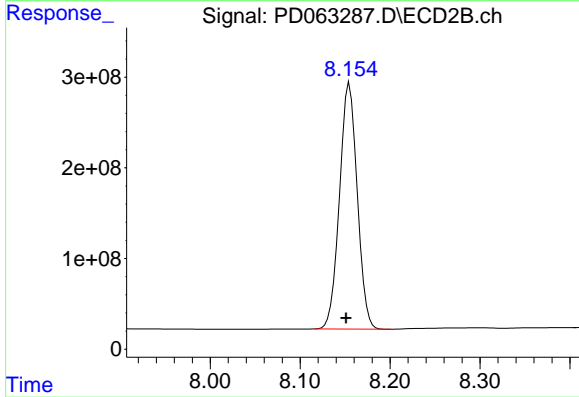
Instrument :
 ECD_D
 ClientSampled :



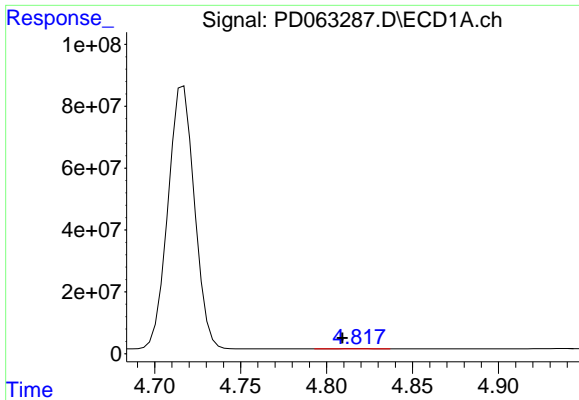
#21 Endrin ketone
 R.T.: 7.702 min
 Delta R.T.: 0.004 min
 Response: 6213179428
 Conc: 517.96 ng/ml



#22 Mirex
 R.T.: 7.335 min
 Delta R.T.: 0.006 min
 Response: 557101997
 Conc: 519.20 ng/ml



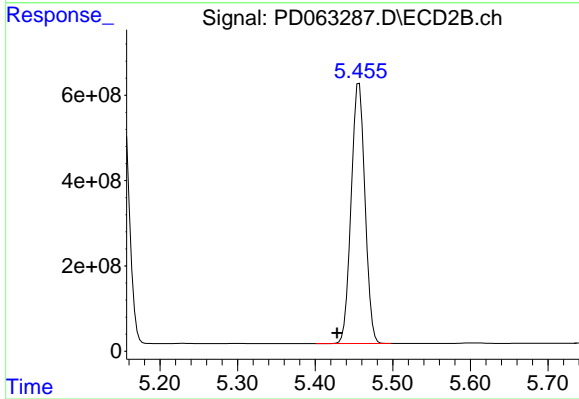
#22 Mirex
 R.T.: 8.155 min
 Delta R.T.: 0.004 min
 Response: 3722155604
 Conc: 489.47 ng/ml



#24 Chlordane-2

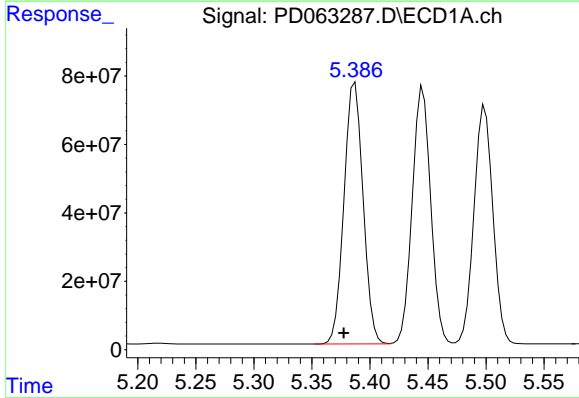
R.T.: 4.819 min
 Delta R.T.: 0.010 min
 Response: 606873
 Conc: 10.67 ng/ml

Instrument :
 ECD_D
 ClientSampled :



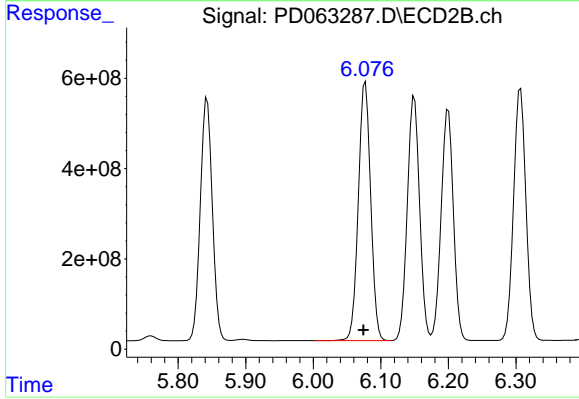
#24 Chlordane-2

R.T.: 5.457 min
 Delta R.T.: 0.029 min
 Response: 7547131011
 Conc: 13342.23 ng/ml



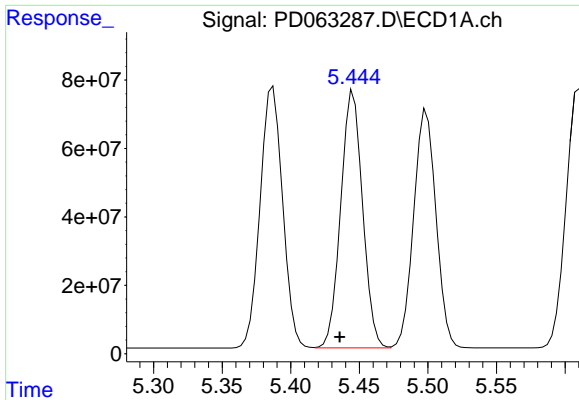
#25 Chlordane-3

R.T.: 5.387 min
 Delta R.T.: 0.010 min
 Response: 873551474
 Conc: 5298.73 ng/ml



#25 Chlordane-3

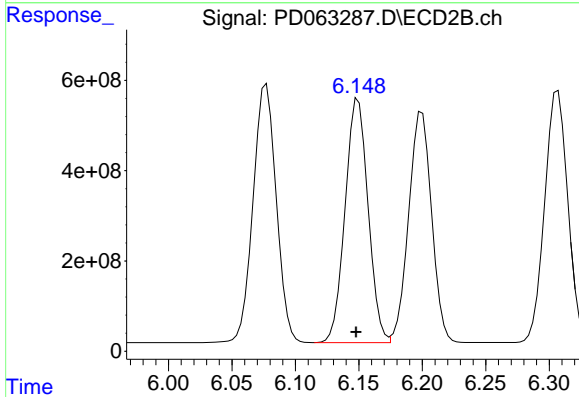
R.T.: 6.077 min
 Delta R.T.: 0.003 min
 Response: 7291463676
 Conc: 3087.29 ng/ml



#26 Chlordane-4

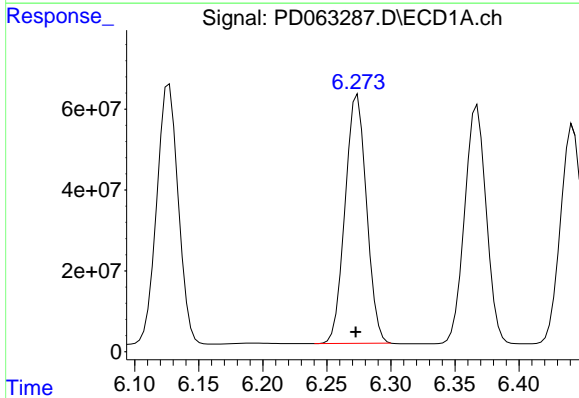
R.T.: 5.446 min
 Delta R.T.: 0.010 min
 Response: 833154147
 Conc: 6164.18 ng/ml

Instrument :
 ECD_D
 ClientSampled :



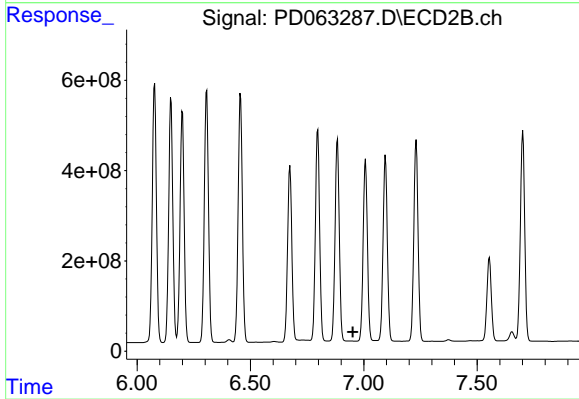
#26 Chlordane-4

R.T.: 6.150 min
 Delta R.T.: 0.002 min
 Response: 6807521451
 Conc: 2517.32 ng/ml



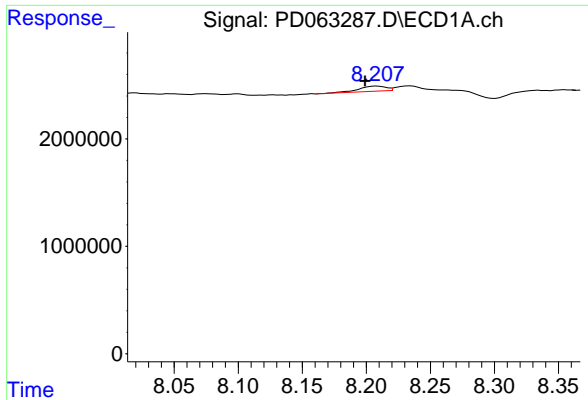
#27 Chlordane-5

R.T.: 6.274 min
 Delta R.T.: 0.001 min
 Response: 715868083
 Conc: 14359.57 ng/ml



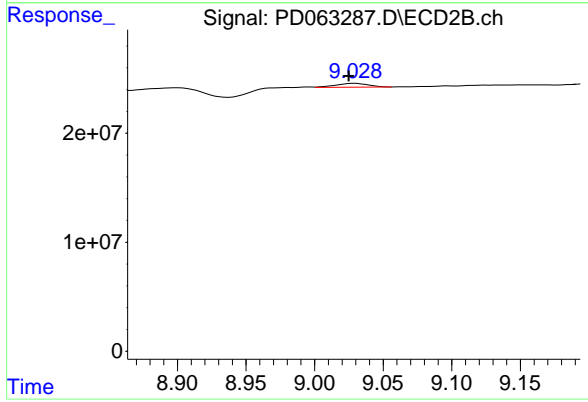
#27 Chlordane-5

R.T.: 0.000 min
 Exp R.T.: 6.952 min
 Response: 0
 Conc: N.D.



#28 Decachlorobiphenyl
R.T.: 8.208 min
Delta R.T.: 0.009 min
Response: 692778
Conc: 0.55 ng/ml

Instrument :
ECD_D
ClientSampleId :



#28 Decachlorobiphenyl
R.T.: 9.029 min
Delta R.T.: 0.004 min
Response: 5687850
Conc: 0.56 ng/ml