

Data Path : Z:\pestpcbsrv\HPCHEM1\ECD_D\Data\PD052621\
 Data File : PD063294.D
 Signal(s) : Signal #1: ECD1A.ch Signal #2: ECD2B.ch
 Acq On : 26 May 2021 13:29
 Operator : AR\AJ
 Sample : M2519-01
 Misc :
 ALS Vial : 11 Sample Multiplier: 1

Instrument :
 ECD_D
 ClientSampled :

Integration File signal 1: autoint1.e
 Integration File signal 2: autoint2.e
 Quant Time: May 27 05:51:51 2021
 Quant Method : Z:\pestpcbsrv\HPCHEM1\ECD_D\Method\PD051721.M
 Quant Title : GC Extractables
 QLast Update : Mon May 24 14:48:18 2021
 Response via : Initial Calibration
 Integrator: ChemStation

Volume Inj. : 2 µl
 Signal #1 Phase : ZB-MR2 Signal #2 Phase: ZB-MR1
 Signal #1 Info : 30M x 0.32mm x0.2 Signal #2 Info : 30M x 0.32mm x 0.50µm

Compound	RT#1	RT#2	Resp#1	Resp#2	ng/ml	ng/ml

System Monitoring Compounds						
1) SA Tetrachlo...	3.441	3.971	11914897	99930409	10.817	8.623
28) SA Decachlor...	8.196	9.026	27411453	175.7E6	21.780	17.223
Target Compounds						
4) MA Heptachlor	4.461	5.152	1952416	20558532	1.241	1.240
5) MB Aldrin	0.000	5.476f	0	1838715	N.D.	0.110 #
6) B beta-BHC	0.000	4.795f	0	2183370	N.D.	0.294 #
7) B delta-BHC	0.000	5.029	0	12787500	N.D.	0.915 #
8) B Heptachlo...	0.000	5.833	0	9649175	N.D.	0.631 #
9) A Endosulfan I	0.000	6.198	0	1606869	N.D.	0.113 #
10) B gamma-Chl...	5.380	6.076	3214709	104.4E6	2.192	6.699 #
11) B alpha-Chl...	5.437	6.150	8427142	161.6E6	5.837	10.907 #
12) B 4,4'-DDE	5.601	6.304	3301607	43350724	2.301	2.872
13) MA Dieldrin	5.726	6.443	2527190	5771940	1.708	0.381 #
14) MA Endrin	5.998	6.666	5875523	5354987	4.393	0.420 #
15) B Endosulfa...	6.273	6.866	3938332	1286581	3.166	0.107 #
16) A 4,4'-DDD	6.117	6.800	727509	28565606	0.605	2.354 #
17) MA 4,4'-DDT	6.357	7.093	9299387	61042073	8.136	5.414 #
18) B Endrin al...	6.453f	7.018	567346	-1513996	0.534	N.D. #
19) B Endosulfa...	6.643	7.230	766177	2130672	0.636	0.174 #
20) A Methoxychlor	6.889f	0.000	1994492	0	2.972	N.D. #
21) B Endrin ke...	7.166f	7.713f	1433129	5431211	0.970	0.453 #
22) Mirex	7.335	8.178f	316447	12836375	0.295	1.688 #
23) Chlordane-1	4.309	4.962	1214304	12085290	26.079	20.835
24) Chlordane-2	4.814	5.429	3798993	22799411	66.822	40.306 #
25) Chlordane-3	5.380	6.076	3214709	104.4E6	19.500	44.217 #
26) Chlordane-4	5.437	6.150	8427142	161.6E6	62.349	59.771
27) Chlordane-5	6.273	6.954	3938332	31132456	78.999	69.651

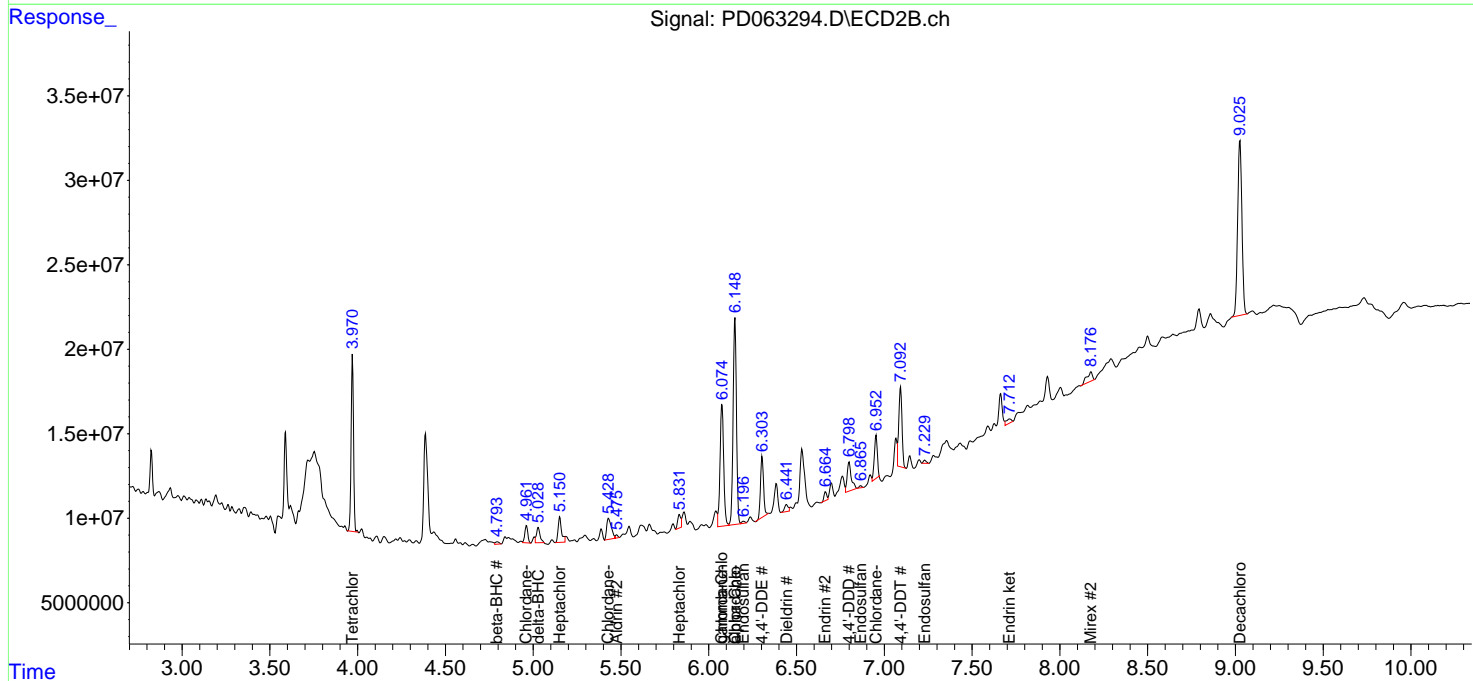
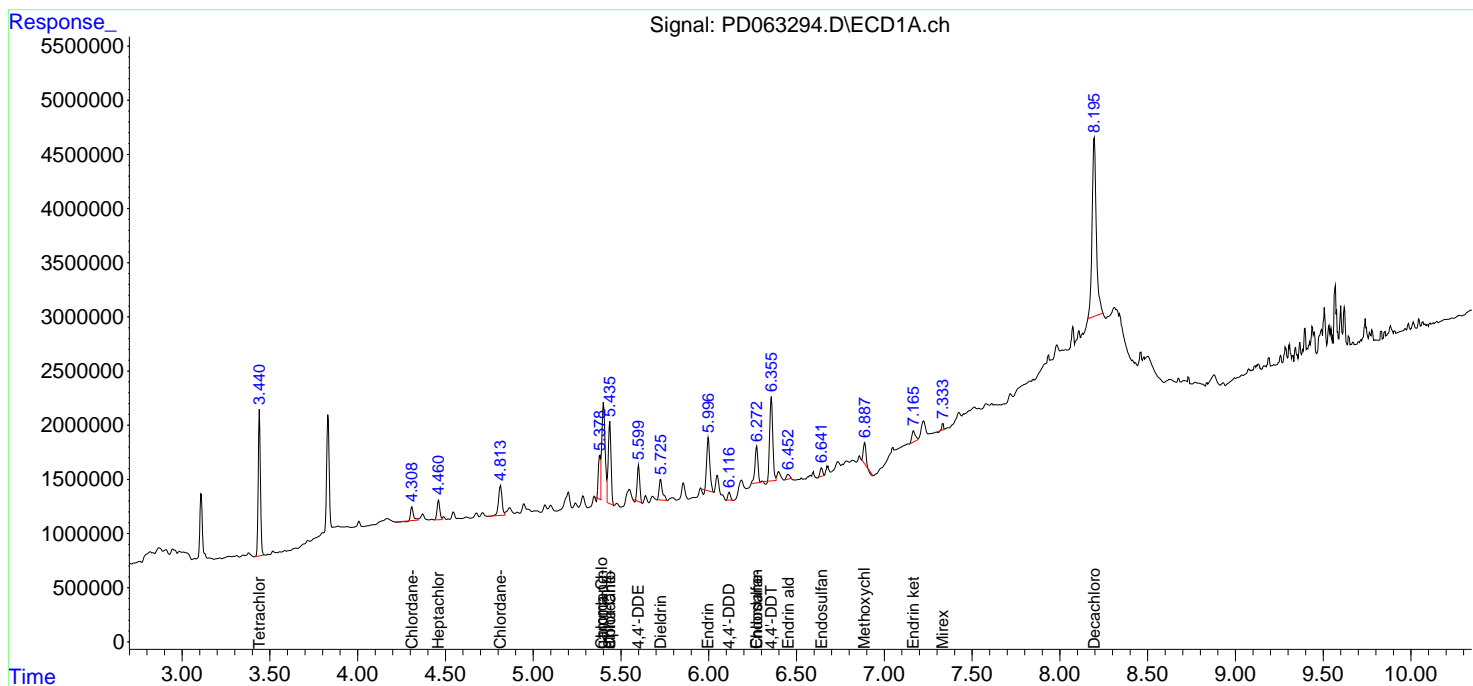
(f)=RT Delta > 1/2 Window (#)=Amounts differ by > 25% (m)=manual int.

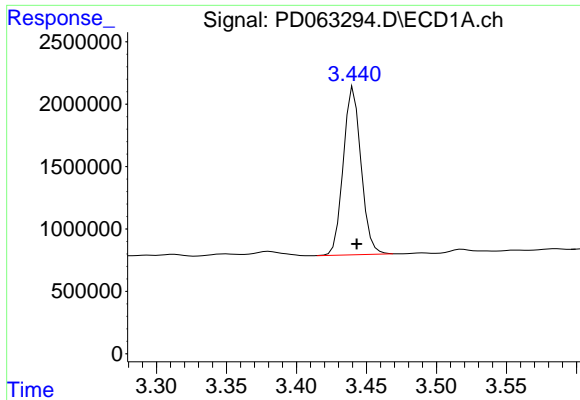
Data Path : Z:\pestpcbsrv\HPCHEM1\ECD_D\Data\PD052621\
 Data File : PD063294.D
 Signal(s) : Signal #1: ECD1A.ch Signal #2: ECD2B.ch
 Acq On : 26 May 2021 13:29
 Operator : AR\AJ
 Sample : M2519-01
 Misc :
 ALS Vial : 11 Sample Multiplier: 1

Instrument :
 ECD_D
 ClientSampled :

Integration File signal 1: autoint1.e
 Integration File signal 2: autoint2.e
 Quant Time: May 27 05:51:51 2021
 Quant Method : Z:\pestpcbsrv\HPCHEM1\ECD_D\Method\PD051721.M
 Quant Title : GC Extractables
 QLast Update : Mon May 24 14:48:18 2021
 Response via : Initial Calibration
 Integrator: ChemStation

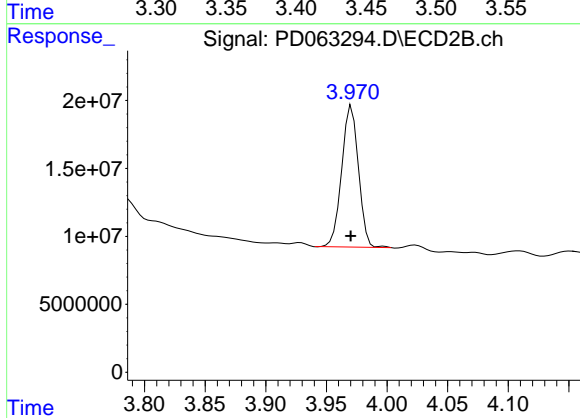
Volume Inj. : 2 µl
 Signal #1 Phase : ZB-MR2 Signal #2 Phase: ZB-MR1
 Signal #1 Info : 30M x 0.32mm x0.2 Signal #2 Info : 30M x 0.32mm x 0.50µm



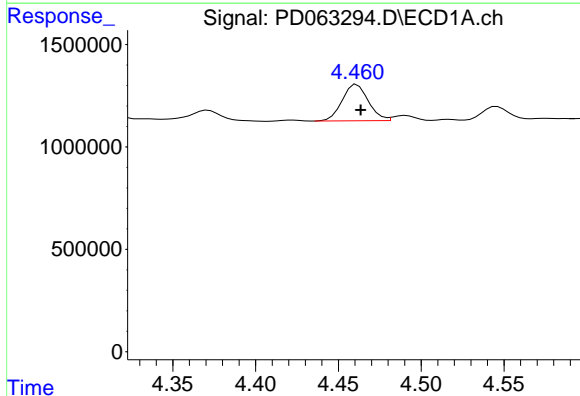


#1 Tetrachloro-m-xylene
 R.T.: 3.441 min
 Delta R.T.: -0.002 min
 Response: 11914897
 Conc: 10.82 ng/ml

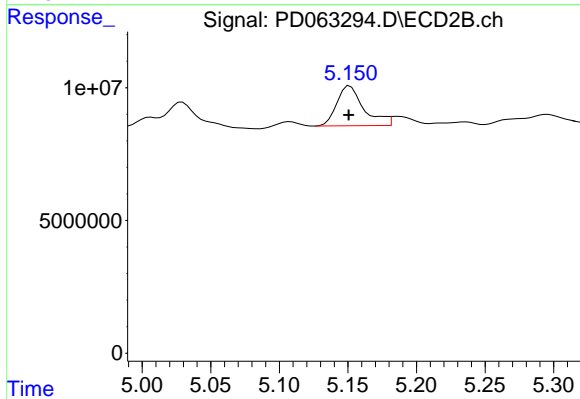
Instrument :
 ECD_D
 ClientSampled :



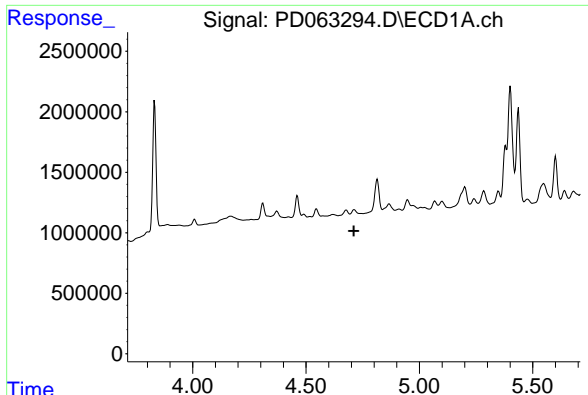
#1 Tetrachloro-m-xylene
 R.T.: 3.971 min
 Delta R.T.: 0.000 min
 Response: 99930409
 Conc: 8.62 ng/ml



#4 Heptachlor
 R.T.: 4.461 min
 Delta R.T.: -0.002 min
 Response: 1952416
 Conc: 1.24 ng/ml

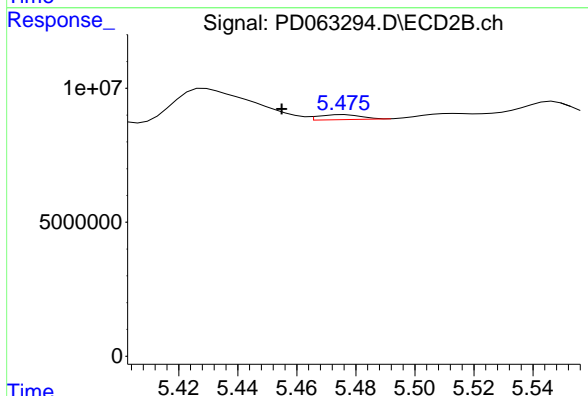


#4 Heptachlor
 R.T.: 5.152 min
 Delta R.T.: 0.000 min
 Response: 20558532
 Conc: 1.24 ng/ml

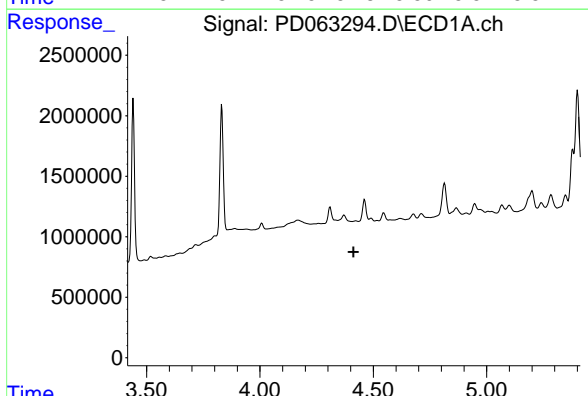


#5 Aldrin
 R.T.: 0.000 min
 Exp R.T.: 4.711 min
 Response: 0
 Conc: N.D.

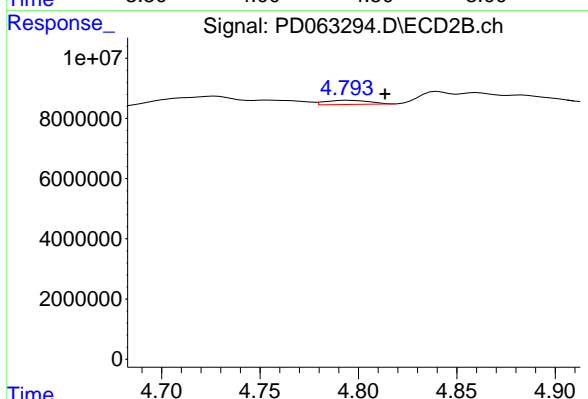
Instrument :
 ECD_D
 ClientSampled :



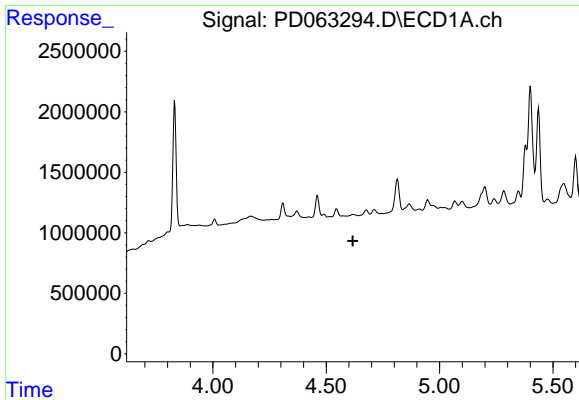
#5 Aldrin
 R.T.: 5.476 min
 Delta R.T.: 0.021 min
 Response: 1838715
 Conc: 0.11 ng/ml



#6 beta-BHC
 R.T.: 0.000 min
 Exp R.T.: 4.413 min
 Response: 0
 Conc: N.D.

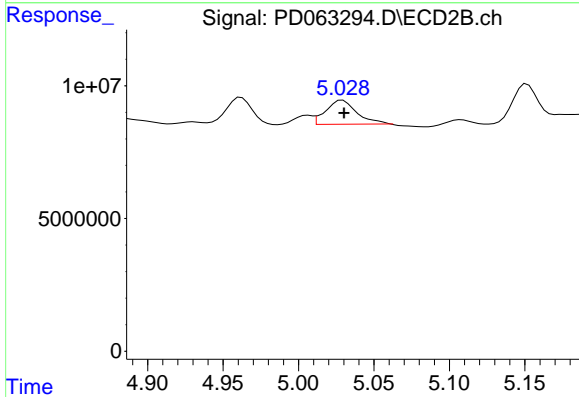


#6 beta-BHC
 R.T.: 4.795 min
 Delta R.T.: -0.019 min
 Response: 2183370
 Conc: 0.29 ng/ml

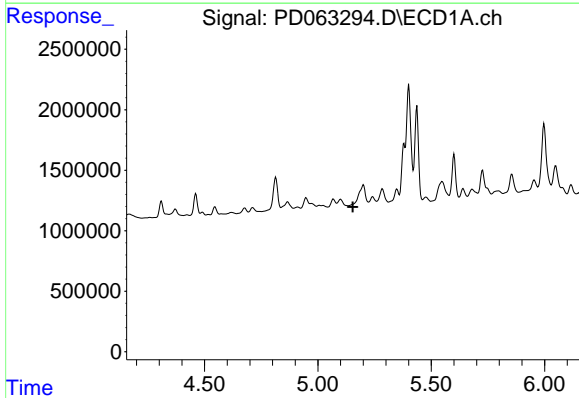


#7 delta-BHC
 R.T.: 0.000 min
 Exp R.T. : 4.617 min
 Response: 0
 Conc: N.D.

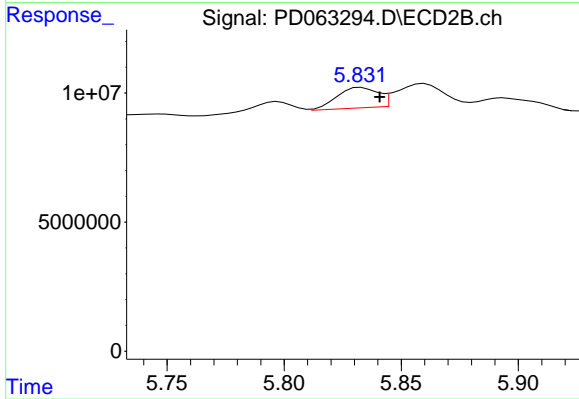
Instrument :
 ECD_D
 ClientSampleId :



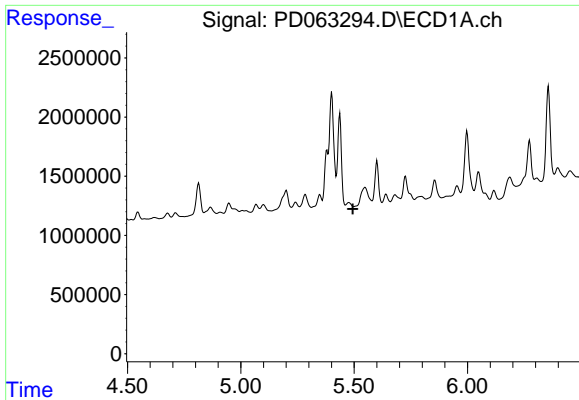
#7 delta-BHC
 R.T.: 5.029 min
 Delta R.T.: 0.000 min
 Response: 12787500
 Conc: 0.92 ng/ml



#8 Heptachlor epoxide
 R.T.: 0.000 min
 Exp R.T. : 5.154 min
 Response: 0
 Conc: N.D.



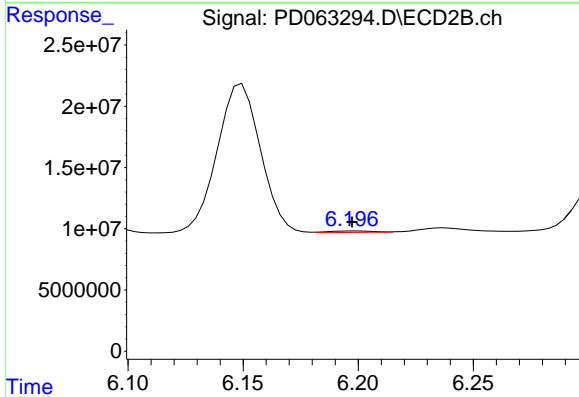
#8 Heptachlor epoxide
 R.T.: 5.833 min
 Delta R.T.: -0.008 min
 Response: 9649175
 Conc: 0.63 ng/ml



#9 Endosulfan I

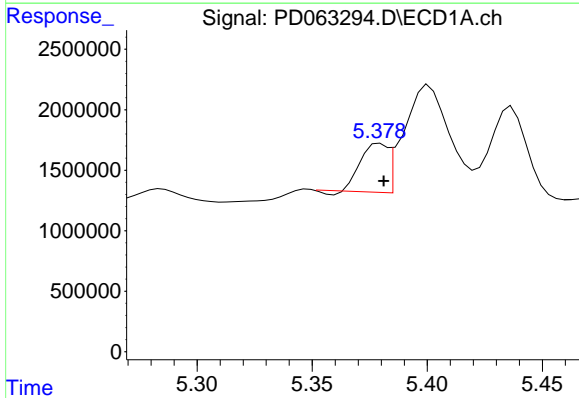
R.T.: 0.000 min
 Exp R.T.: 5.493 min
 Response: 0
 Conc: N.D.

Instrument :
 ECD_D
 ClientSampleId :



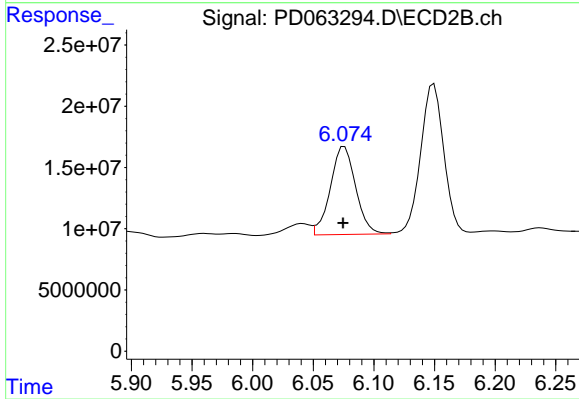
#9 Endosulfan I

R.T.: 6.198 min
 Delta R.T.: 0.000 min
 Response: 1606869
 Conc: 0.11 ng/ml



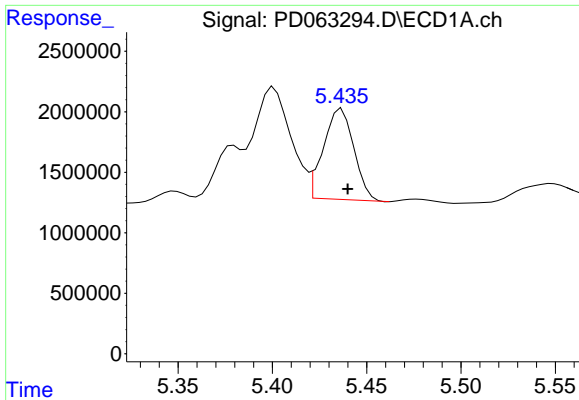
#10 gamma-Chlordane

R.T.: 5.380 min
 Delta R.T.: -0.001 min
 Response: 3214709
 Conc: 2.19 ng/ml



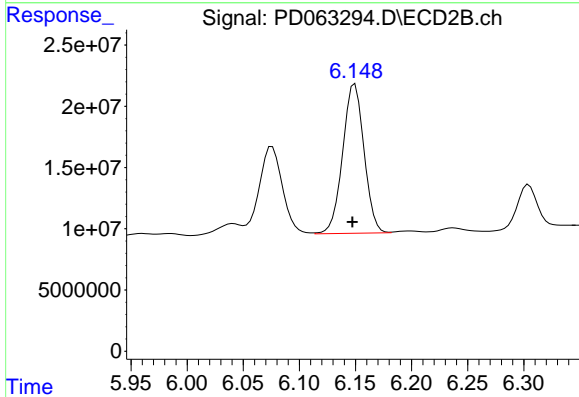
#10 gamma-Chlordane

R.T.: 6.076 min
 Delta R.T.: 0.001 min
 Response: 104430284
 Conc: 6.70 ng/ml

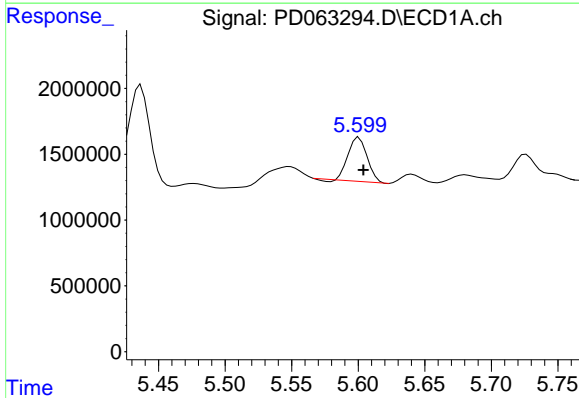


#11 alpha-Chlordane
 R.T.: 5.437 min
 Delta R.T.: -0.003 min
 Response: 8427142
 Conc: 5.84 ng/ml

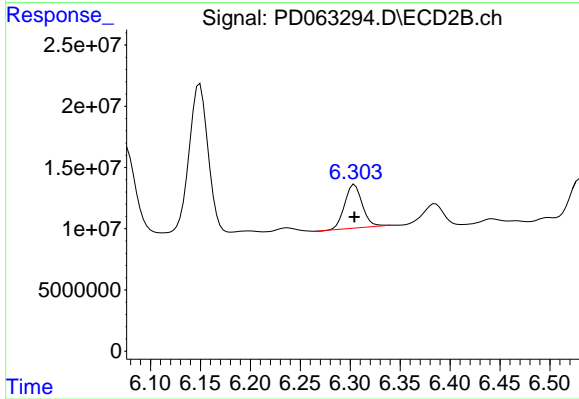
Instrument :
 ECD_D
 ClientSampleId :



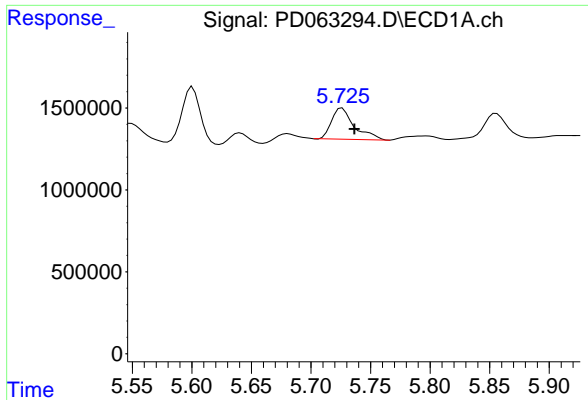
#11 alpha-Chlordane
 R.T.: 6.150 min
 Delta R.T.: 0.002 min
 Response: 161637569
 Conc: 10.91 ng/ml



#12 4,4'-DDE
 R.T.: 5.601 min
 Delta R.T.: -0.003 min
 Response: 3301607
 Conc: 2.30 ng/ml

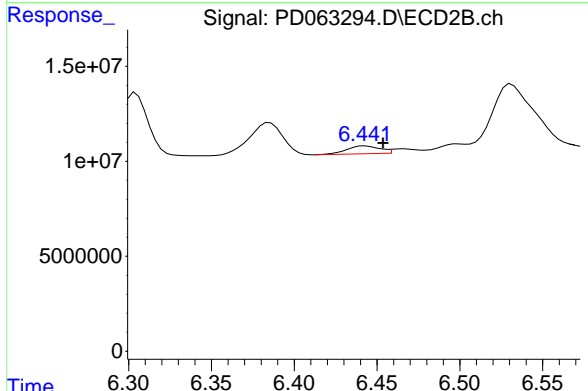


#12 4,4'-DDE
 R.T.: 6.304 min
 Delta R.T.: 0.000 min
 Response: 43350724
 Conc: 2.87 ng/ml

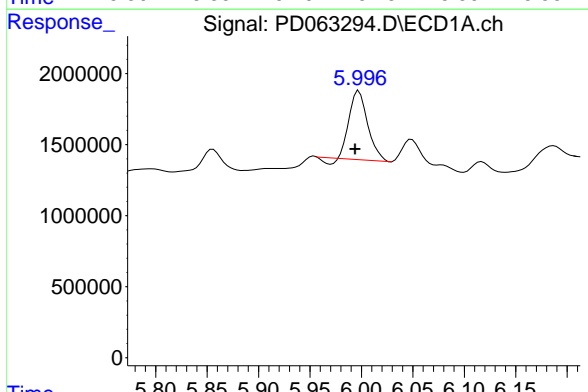


#13 Dieldrin
 R.T.: 5.726 min
 Delta R.T.: -0.010 min
 Response: 2527190
 Conc: 1.71 ng/ml

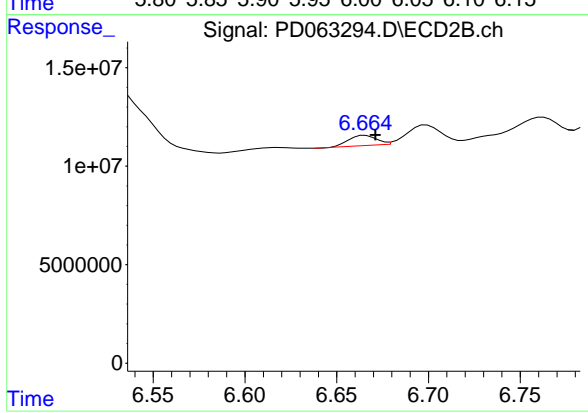
Instrument :
 ECD_D
 ClientSampleId :



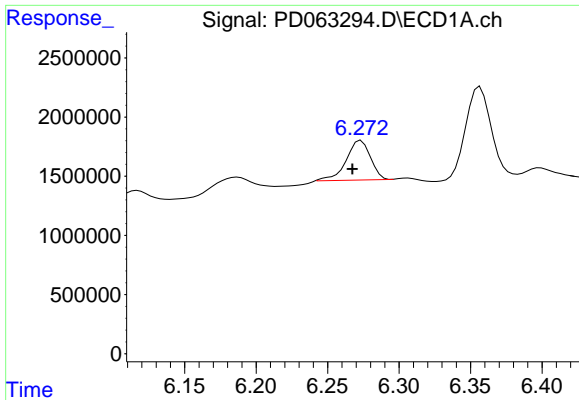
#13 Dieldrin
 R.T.: 6.443 min
 Delta R.T.: -0.011 min
 Response: 5771940
 Conc: 0.38 ng/ml



#14 Endrin
 R.T.: 5.998 min
 Delta R.T.: 0.004 min
 Response: 5875523
 Conc: 4.39 ng/ml

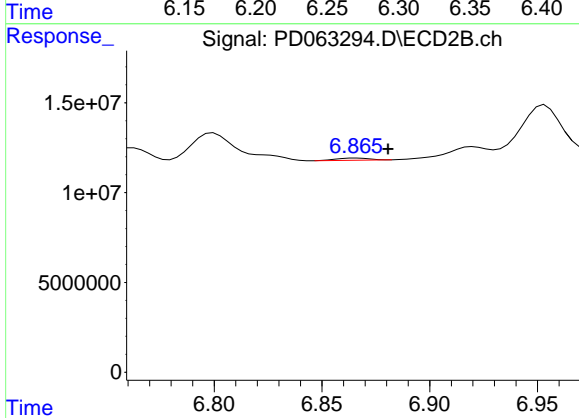


#14 Endrin
 R.T.: 6.666 min
 Delta R.T.: -0.005 min
 Response: 5354987
 Conc: 0.42 ng/ml

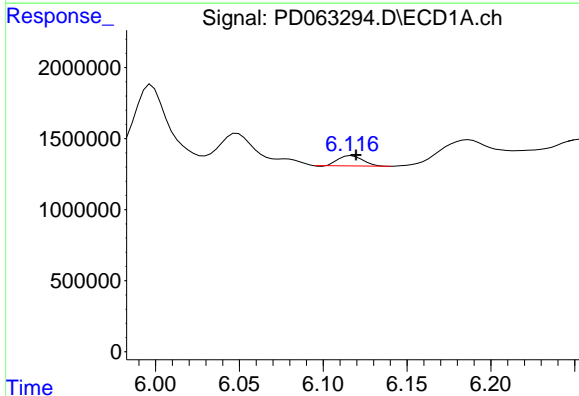


#15 Endosulfan II
 R.T.: 6.273 min
 Delta R.T.: 0.006 min
 Response: 3938332
 Conc: 3.17 ng/ml

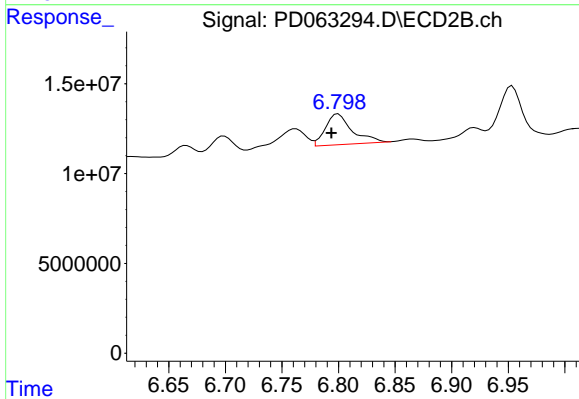
Instrument :
 ECD_D
 ClientSampleId :



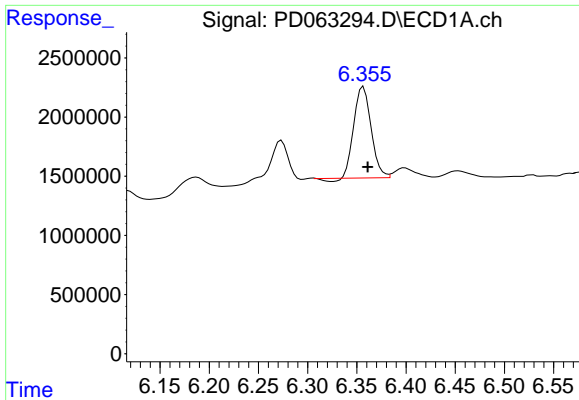
#15 Endosulfan II
 R.T.: 6.866 min
 Delta R.T.: -0.015 min
 Response: 1286581
 Conc: 0.11 ng/ml



#16 4,4'-DDD
 R.T.: 6.117 min
 Delta R.T.: -0.002 min
 Response: 727509
 Conc: 0.60 ng/ml

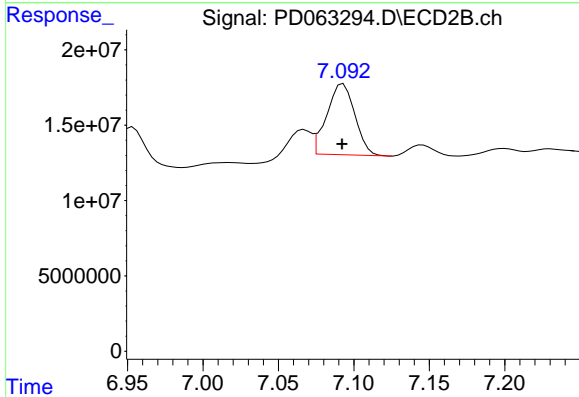


#16 4,4'-DDD
 R.T.: 6.800 min
 Delta R.T.: 0.006 min
 Response: 28565606
 Conc: 2.35 ng/ml

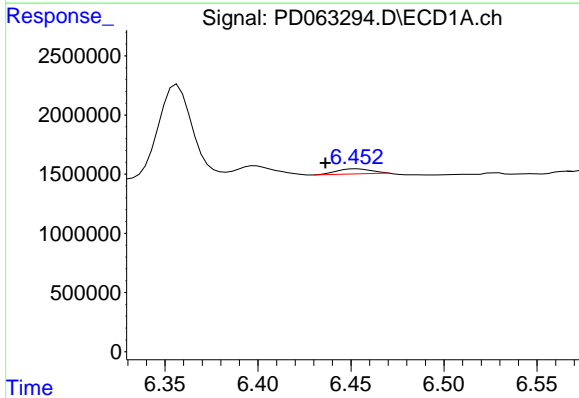


#17 4,4'-DDT
 R.T.: 6.357 min
 Delta R.T.: -0.004 min
 Response: 9299387
 Conc: 8.14 ng/ml

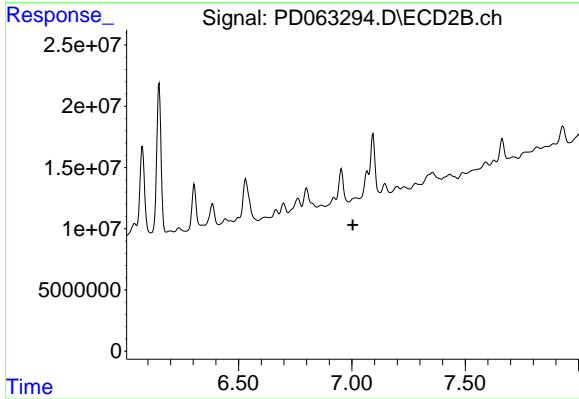
Instrument :
 ECD_D
 ClientSampleId :



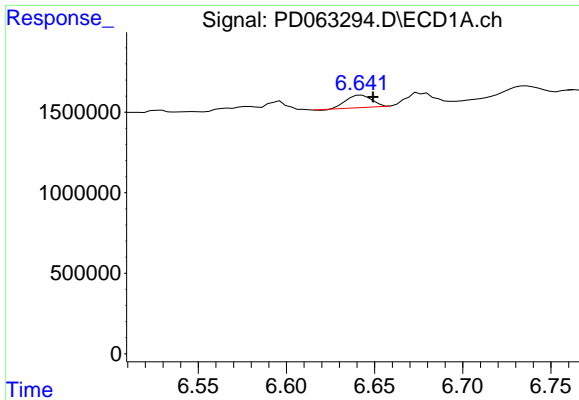
#17 4,4'-DDT
 R.T.: 7.093 min
 Delta R.T.: 0.000 min
 Response: 61042073
 Conc: 5.41 ng/ml



#18 Endrin aldehyde
 R.T.: 6.453 min
 Delta R.T.: 0.017 min
 Response: 567346
 Conc: 0.53 ng/ml

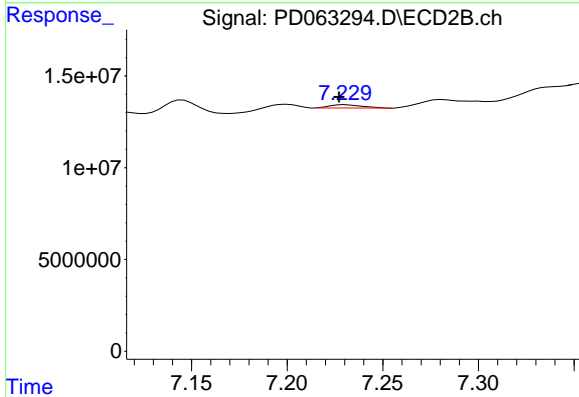


#18 Endrin aldehyde
 R.T.: 7.018 min
 Delta R.T.: 0.013 min
 Response: -1513996
 Conc: N.D.

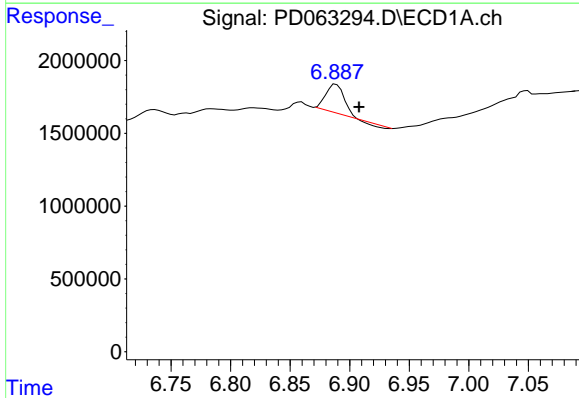


#19 Endosulfan Sulfate
 R.T.: 6.643 min
 Delta R.T.: -0.007 min
 Response: 766177
 Conc: 0.64 ng/ml

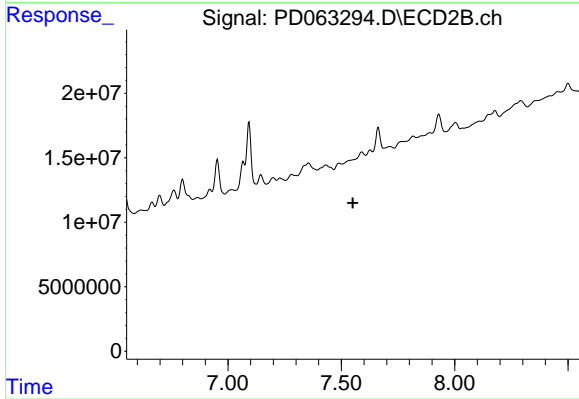
Instrument :
 ECD_D
 ClientSampleId :



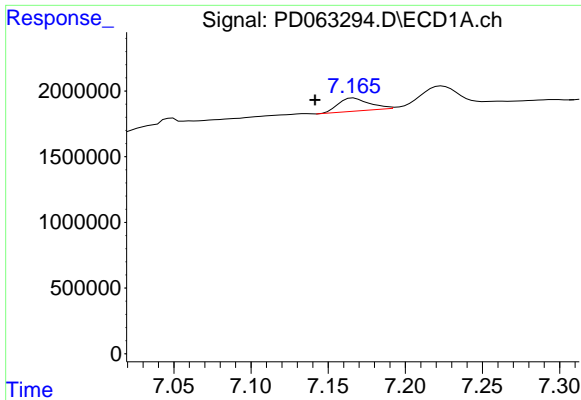
#19 Endosulfan Sulfate
 R.T.: 7.230 min
 Delta R.T.: 0.003 min
 Response: 2130672
 Conc: 0.17 ng/ml



#20 Methoxychlor
 R.T.: 6.889 min
 Delta R.T.: -0.019 min
 Response: 1994492
 Conc: 2.97 ng/ml

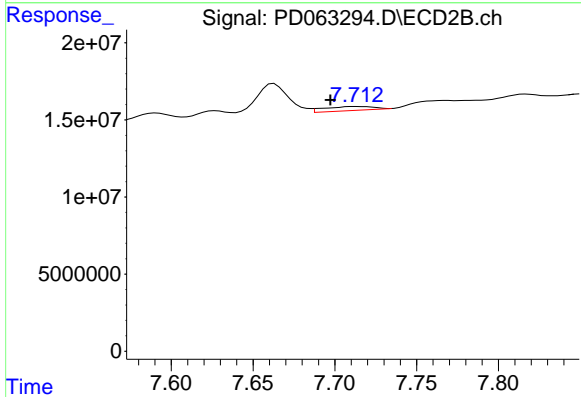


#20 Methoxychlor
 R.T.: 0.000 min
 Exp R.T.: 7.550 min
 Response: 0
 Conc: N.D.

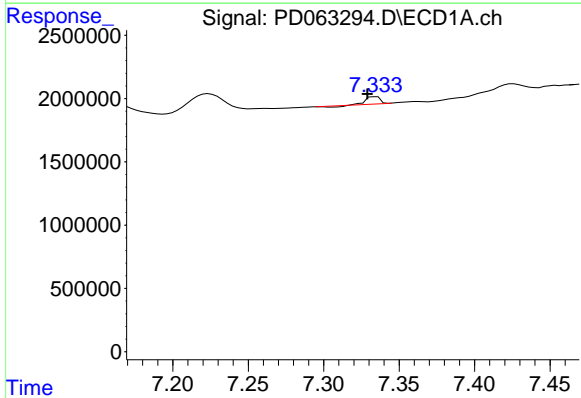


#21 Endrin ketone
 R.T.: 7.166 min
 Delta R.T.: 0.025 min
 Response: 1433129
 Conc: 0.97 ng/ml

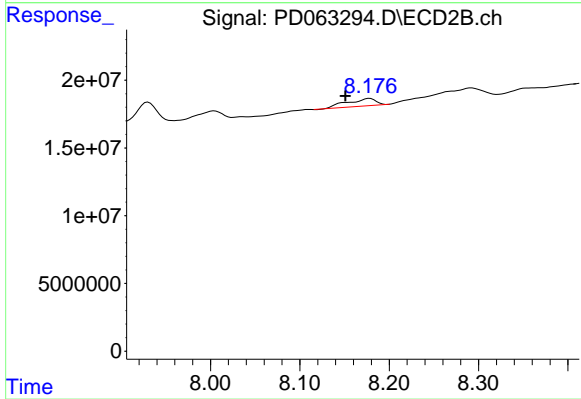
Instrument :
 ECD_D
 ClientSampleId :



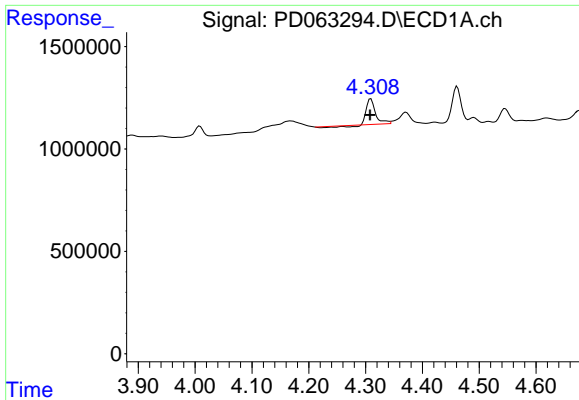
#21 Endrin ketone
 R.T.: 7.713 min
 Delta R.T.: 0.016 min
 Response: 5431211
 Conc: 0.45 ng/ml



#22 Mirex
 R.T.: 7.335 min
 Delta R.T.: 0.006 min
 Response: 316447
 Conc: 0.29 ng/ml

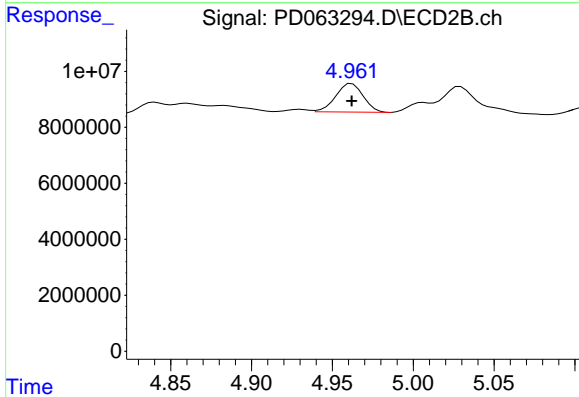


#22 Mirex
 R.T.: 8.178 min
 Delta R.T.: 0.027 min
 Response: 12836375
 Conc: 1.69 ng/ml

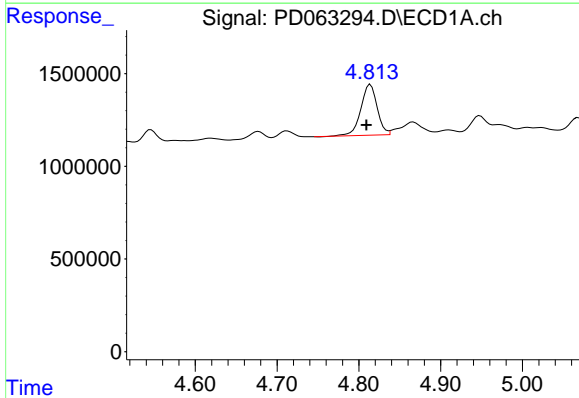


#23 Chlordane-1
 R.T.: 4.309 min
 Delta R.T.: 0.001 min
 Response: 1214304
 Conc: 26.08 ng/ml

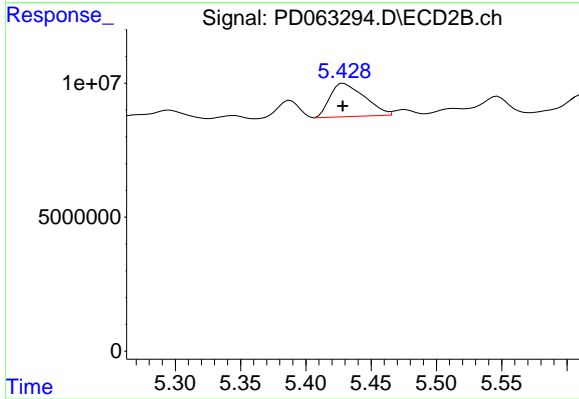
Instrument :
 ECD_D
 ClientSampled :



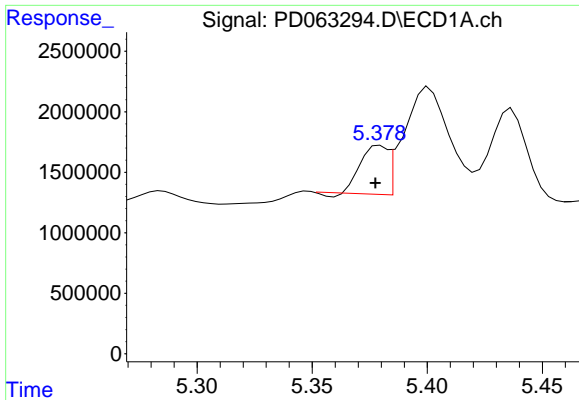
#23 Chlordane-1
 R.T.: 4.962 min
 Delta R.T.: 0.000 min
 Response: 12085290
 Conc: 20.83 ng/ml



#24 Chlordane-2
 R.T.: 4.814 min
 Delta R.T.: 0.005 min
 Response: 3798993
 Conc: 66.82 ng/ml

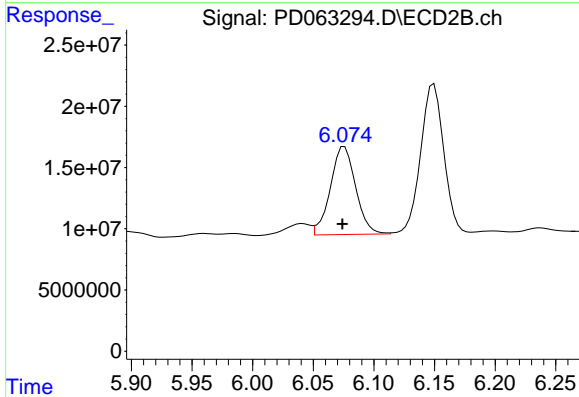


#24 Chlordane-2
 R.T.: 5.429 min
 Delta R.T.: 0.000 min
 Response: 22799411
 Conc: 40.31 ng/ml

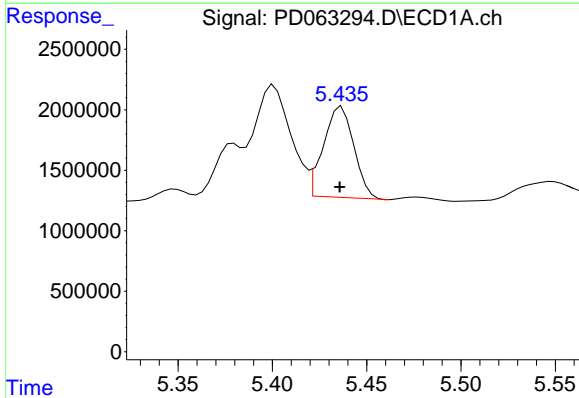


#25 Chlordane-3
R.T.: 5.380 min
Delta R.T.: 0.002 min
Response: 3214709
Conc: 19.50 ng/ml

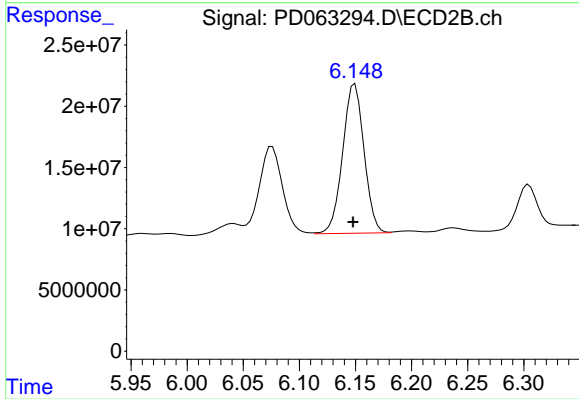
Instrument :
ECD_D
ClientSampleId :



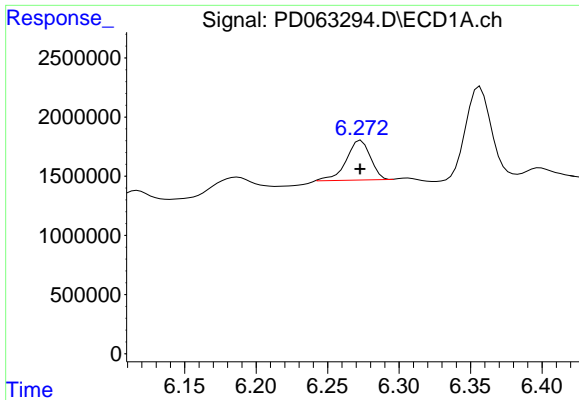
#25 Chlordane-3
R.T.: 6.076 min
Delta R.T.: 0.002 min
Response: 104430284
Conc: 44.22 ng/ml



#26 Chlordane-4
R.T.: 5.437 min
Delta R.T.: 0.001 min
Response: 8427142
Conc: 62.35 ng/ml

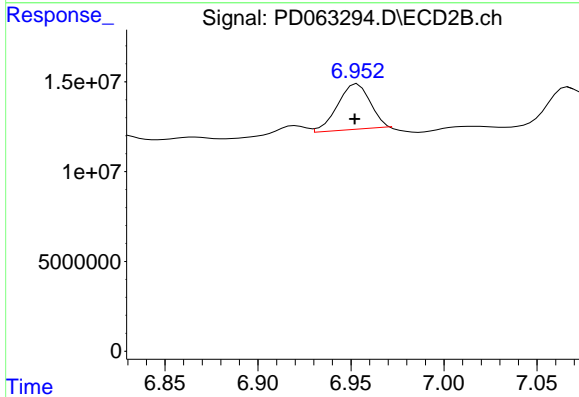


#26 Chlordane-4
R.T.: 6.150 min
Delta R.T.: 0.002 min
Response: 161637569
Conc: 59.77 ng/ml

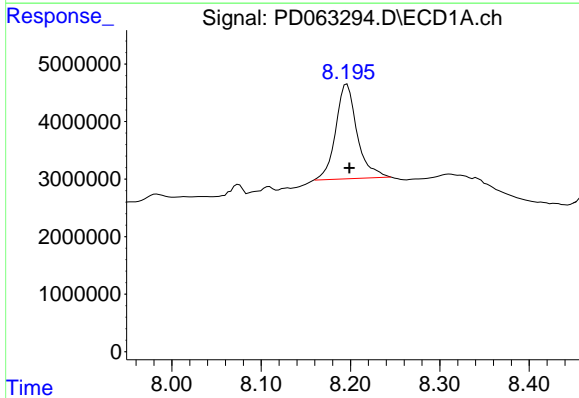


#27 Chlordane-5
 R.T.: 6.273 min
 Delta R.T.: 0.000 min
 Response: 3938332
 Conc: 79.00 ng/ml

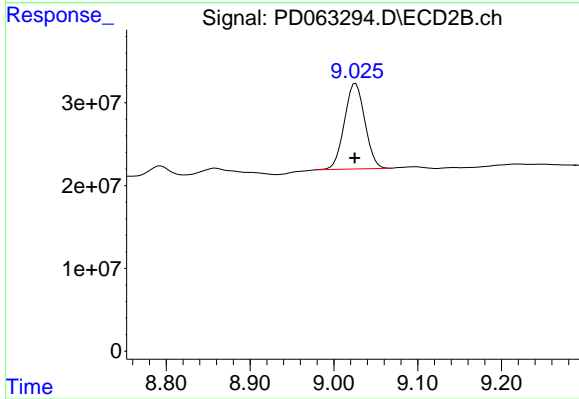
Instrument :
 ECD_D
 ClientSampleId :



#27 Chlordane-5
 R.T.: 6.954 min
 Delta R.T.: 0.002 min
 Response: 31132456
 Conc: 69.65 ng/ml



#28 Decachlorobiphenyl
 R.T.: 8.196 min
 Delta R.T.: -0.003 min
 Response: 27411453
 Conc: 21.78 ng/ml



#28 Decachlorobiphenyl
 R.T.: 9.026 min
 Delta R.T.: 0.001 min
 Response: 175708690
 Conc: 17.22 ng/ml