

Data Path : Z:\pestpcbsrv\HPCHEM1\ECD_D\Data\PD052624\
 Data File : PD083047.D
 Signal(s) : Signal #1: ECD1A.ch Signal #2: ECD2B.ch
 Acq On : 24 May 2024 12:24
 Operator : AR\AJ
 Sample : P2548-03DL 5X
 Misc :
 ALS Vial : 12 Sample Multiplier: 1

Integration File signal 1: autoint1.e
 Integration File signal 2: autoint2.e
 Quant Time: May 24 22:01:05 2024
 Quant Method : Z:\pestpcbsrv\HPCHEM1\ECD_D\Method\PD051924CLP.M
 Quant Title : GC Extractables
 QLast Update : Fri May 17 05:17:58 2024
 Response via : Initial Calibration
 Integrator: ChemStation

Volume Inj. : 1 µl
 Signal #1 Phase : ZB-MR2 Signal #2 Phase: ZB-MR2
 Signal #1 Info : 30M x 0.32mm x0.5 Signal #2 Info : 30M x 0.32mm x 0.25µm

Compound	RT#1	RT#2	Resp#1	Resp#2	ng/ml	ng/ml

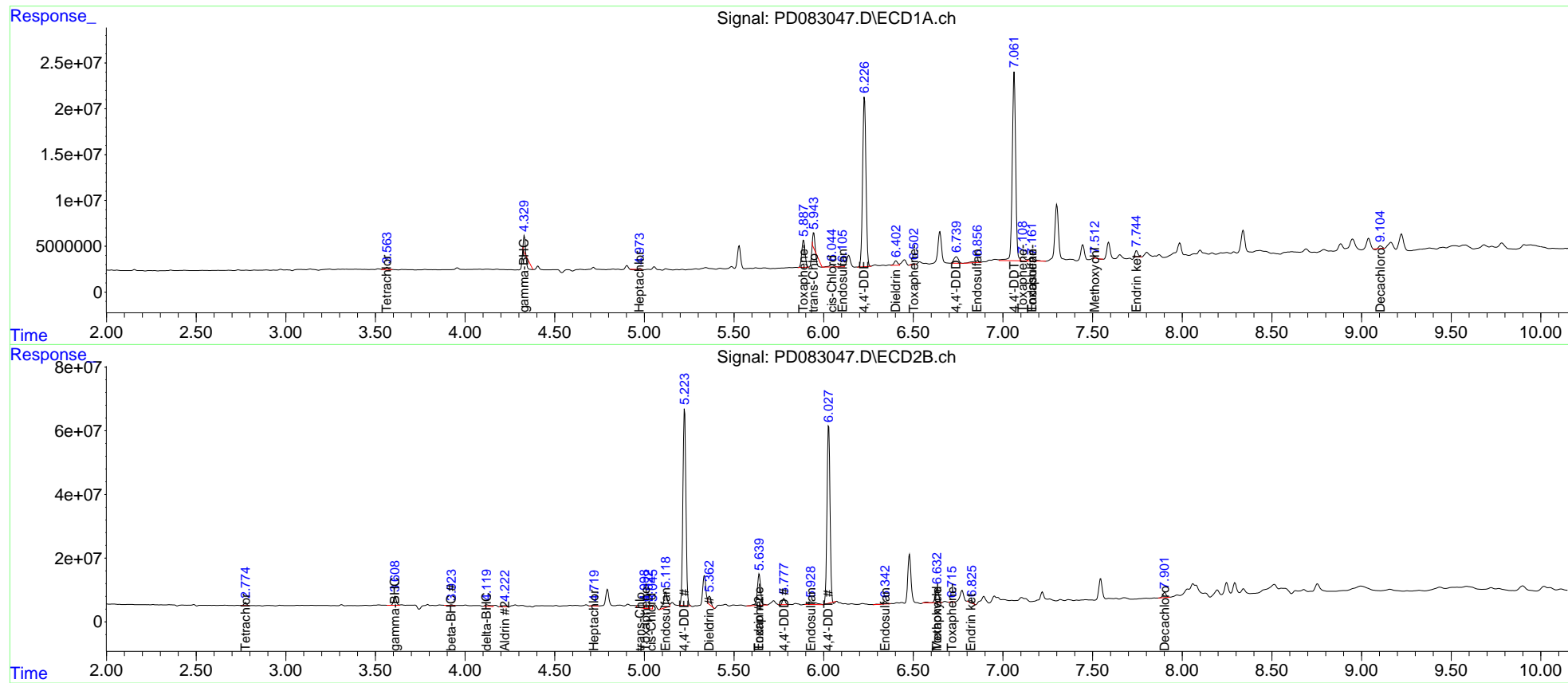
System Monitoring Compounds						
1) SA Tetrachlo...	3.564	2.776	2294130	10135831	1.534	2.606 #
27) SA Decachlor...	9.105	7.902	2619079	20996700	1.307	5.307 #
Target Compounds						
2) A alpha-BHC	0.000	3.268	0	229279	N.D.	<MDL
3) MA gamma-BHC...	4.331f	3.609	981687	30855473	0.398	5.333 #
4) MA Heptachlor	4.975f	3.961	488338	280687	0.194	<MDL #
5) MB Aldrin	0.000	4.224	0	7772581	N.D.	1.406
7) B delta-BHC	0.000	4.120	0	10498039	N.D.	1.775
8) B Heptachlo...	0.000	4.721	0	1693893	N.D.	0.332
9) A Endosulfan I	6.106	5.120	1633000	69584973	0.785	15.429 #
10) B trans-Chl...	5.945	4.977	2049868	20930448	0.947	4.203 #
11) B cis-Chlor...	6.045	5.038	5014483	14799282	2.245	2.914 #
12) B 4,4'-DDE	6.228	5.224	241.2E6	717.2E6	110.624	150.398 #
13) MA Dieldrin	6.404	5.363	6720204	29788558	3.058	5.961 #
14) MA Endrin	0.000	5.641	0	126.2E6	N.D.	28.860
15) B Endosulfa...	6.858	5.928	5024321	26608929	2.608	6.314 #
16) A 4,4'-DDD	6.741	5.778	12636739	19119676	8.148	5.081 #
17) MA 4,4'-DDT	7.063	6.028	268.8E6	653.6E6	167.105	170.231
19) B Endosulfa...	7.162f	6.343	7324637	11504571	4.150	2.862 #
20) A Methoxychlor	7.512	6.633	1231009	57581991	1.423	29.345 #
21) B Endrin ke...	7.745f	6.821	7228195	10953021	3.834	2.436 #
22) Toxaphene-1	5.888	5.008	38072353	15207140	5620.276	574.371 #
23) Toxaphene-2	6.503	5.641f	1235524	126.2E6	65.299	4422.112 #
24) Toxaphene-3	7.109	6.633f	7270766	57581991	137.855	616.651 #
25) Toxaphene-4	7.162	6.718	7324637	1850115	187.666	14.498 #

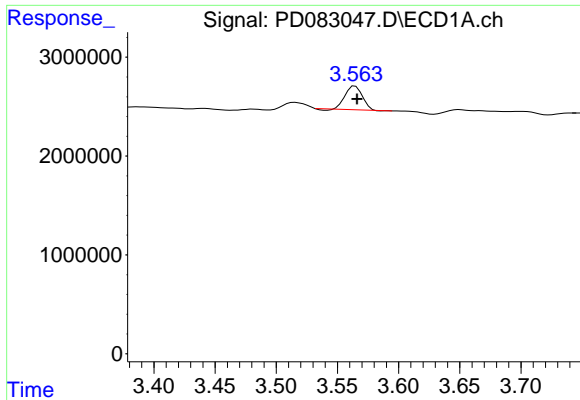
(f)=RT Delta > 1/2 Window (#)=Amounts differ by > 25% (m)=manual int.

Data Path : Z:\pestpcbsrv\HPCHEM1\ECD_D\Data\PD052624\
 Data File : PD083047.D
 Signal(s) : Signal #1: ECD1A.ch Signal #2: ECD2B.ch
 Acq On : 24 May 2024 12:24
 Operator : AR\AJ
 Sample : P2548-03DL 5X
 Misc :
 ALS Vial : 12 Sample Multiplier: 1

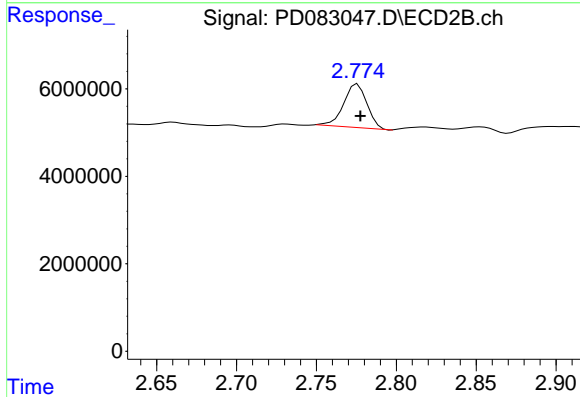
Integration File signal 1: autoint1.e
 Integration File signal 2: autoint2.e
 Quant Time: May 24 22:01:05 2024
 Quant Method : Z:\pestpcbsrv\HPCHEM1\ECD_D\Method\PD051924CLP.M
 Quant Title : GC Extractables
 QLast Update : Fri May 17 05:17:58 2024
 Response via : Initial Calibration
 Integrator: ChemStation

Volume Inj. : 1 µl
 Signal #1 Phase : ZB-MR1 Signal #2 Phase: ZB-MR2
 Signal #1 Info : 30M x 0.32mm x0.5 Signal #2 Info : 30M x 0.32mm x 0.25µm

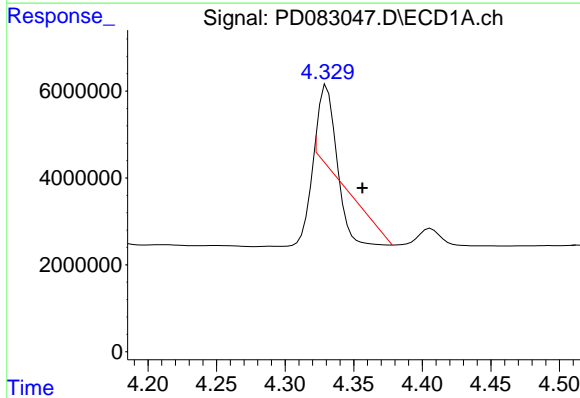




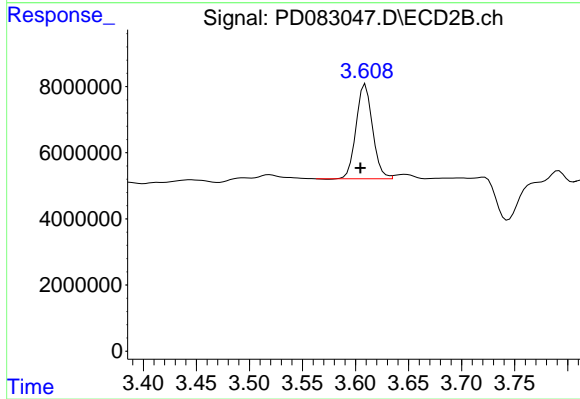
#1 Tetrachloro-m-xylene
 R.T.: 3.564 min
 Delta R.T.: -0.002 min
 Response: 2294130
 Conc: 1.53 ng/ml



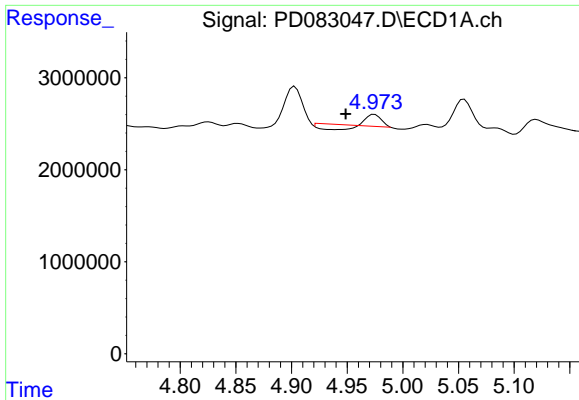
#1 Tetrachloro-m-xylene
 R.T.: 2.776 min
 Delta R.T.: -0.002 min
 Response: 10135831
 Conc: 2.61 ng/ml



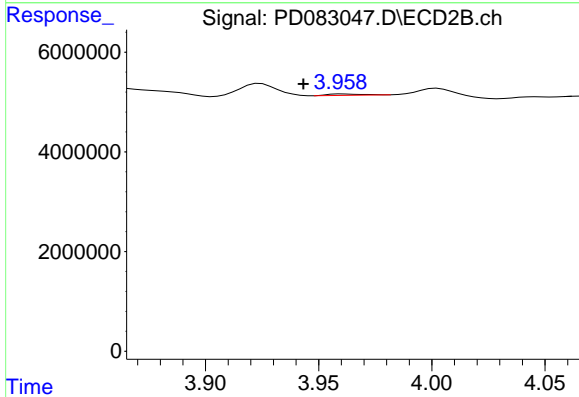
#3 gamma-BHC (Lindane)
 R.T.: 4.331 min
 Delta R.T.: -0.026 min
 Response: 981687
 Conc: 0.40 ng/ml



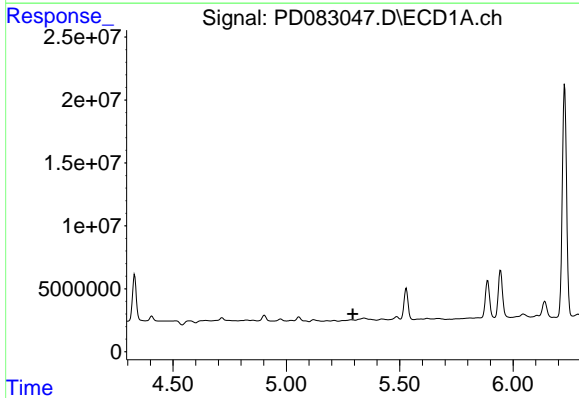
#3 gamma-BHC (Lindane)
 R.T.: 3.609 min
 Delta R.T.: 0.005 min
 Response: 30855473
 Conc: 5.33 ng/ml



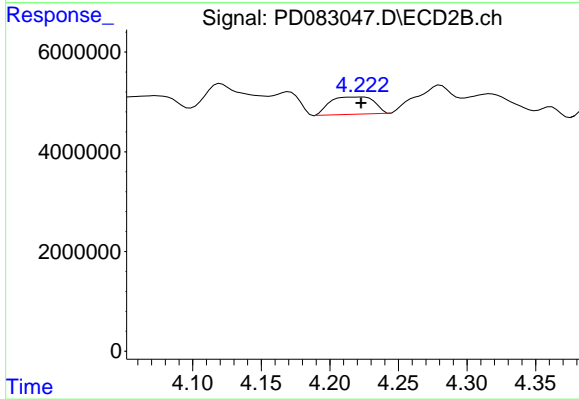
#4 Heptachlor
 R.T.: 4.975 min
 Delta R.T.: 0.026 min
 Response: 488338
 Conc: 0.19 ng/ml



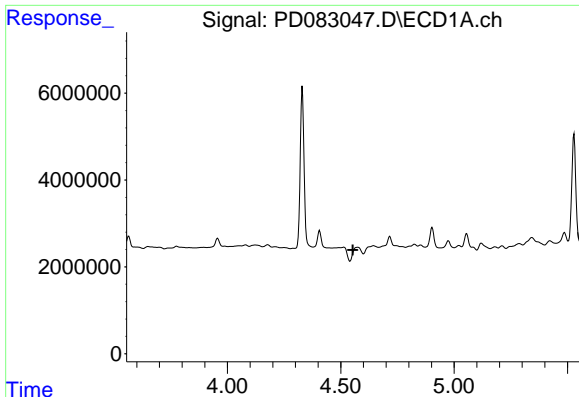
#4 Heptachlor
 R.T.: 3.961 min
 Delta R.T.: 0.017 min
 Response: 280687
 Conc: N.D.



#5 Aldrin
 R.T.: 0.000 min
 Exp R.T. : 5.293 min
 Response: 0
 Conc: N.D.

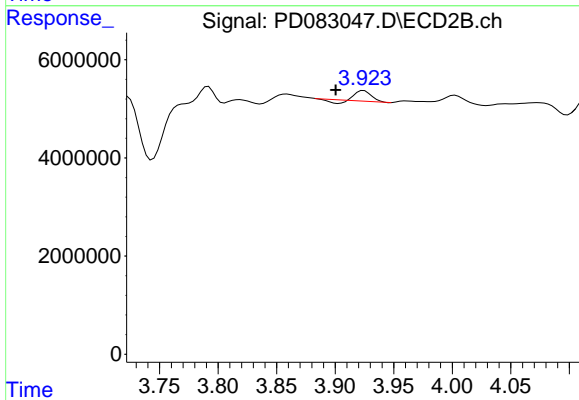


#5 Aldrin
 R.T.: 4.224 min
 Delta R.T.: 0.001 min
 Response: 7772581
 Conc: 1.41 ng/ml



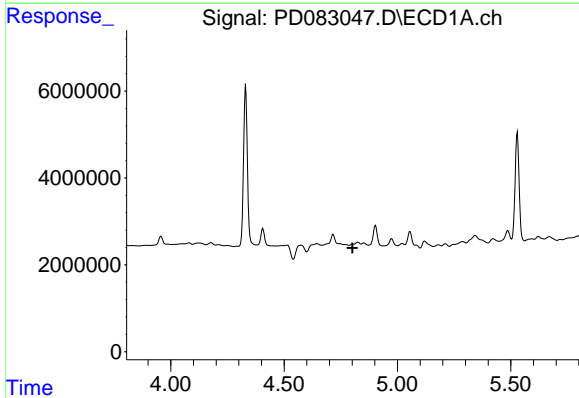
#6 beta-BHC

R.T.: 4.575 min
 Delta R.T.: 0.022 min
 Response: -1395805
 Conc: N.D.



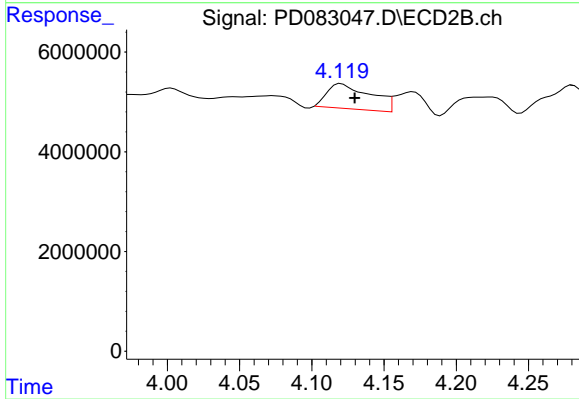
#6 beta-BHC

R.T.: 3.924 min
 Delta R.T.: 0.024 min
 Response: 1606813
 Conc: 0.64 ng/ml



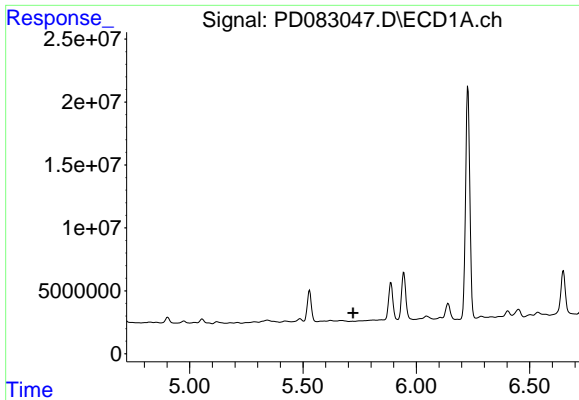
#7 delta-BHC

R.T.: 0.000 min
 Exp R.T. : 4.802 min
 Response: 0
 Conc: N.D.

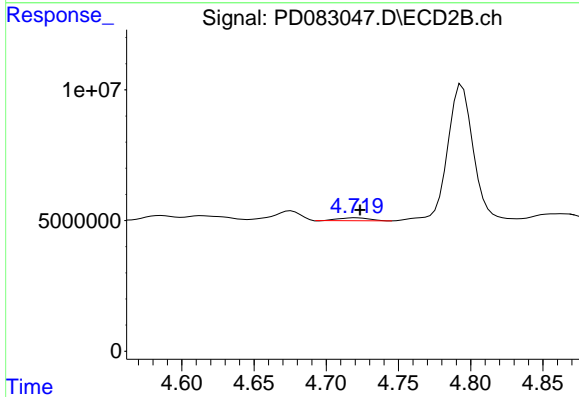


#7 delta-BHC

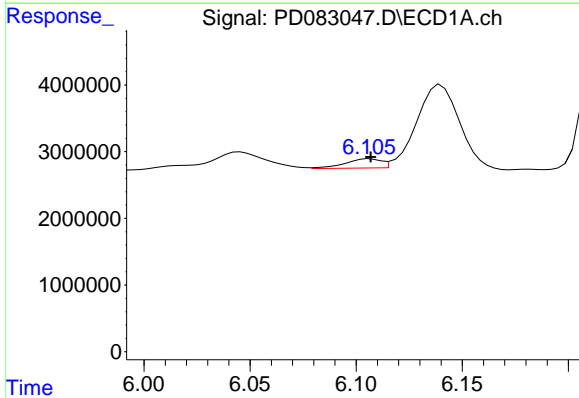
R.T.: 4.120 min
 Delta R.T.: -0.009 min
 Response: 10498039
 Conc: 1.77 ng/ml



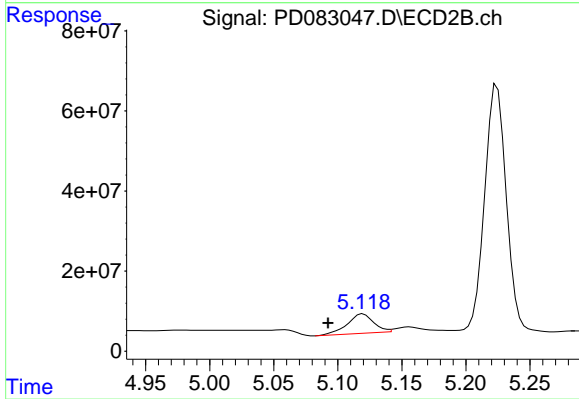
#8 Heptachlor epoxide
 R.T.: 0.000 min
 Exp R.T.: 5.721 min
 Response: 0
 Conc: N.D.



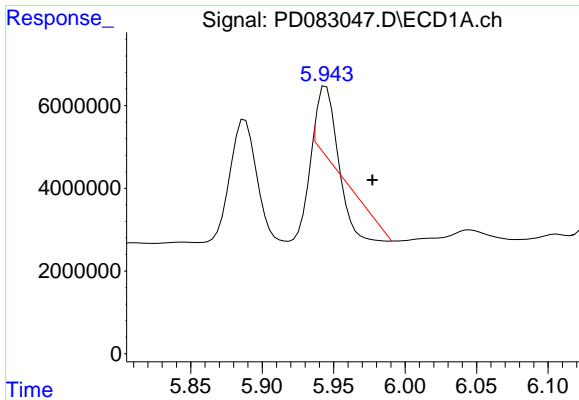
#8 Heptachlor epoxide
 R.T.: 4.721 min
 Delta R.T.: -0.003 min
 Response: 1693893
 Conc: 0.33 ng/ml



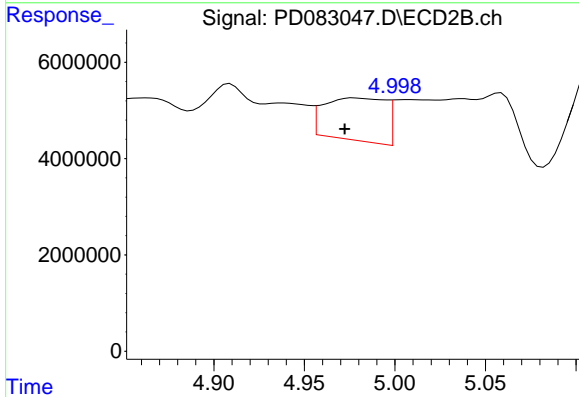
#9 Endosulfan I
 R.T.: 6.106 min
 Delta R.T.: 0.000 min
 Response: 1633000
 Conc: 0.78 ng/ml



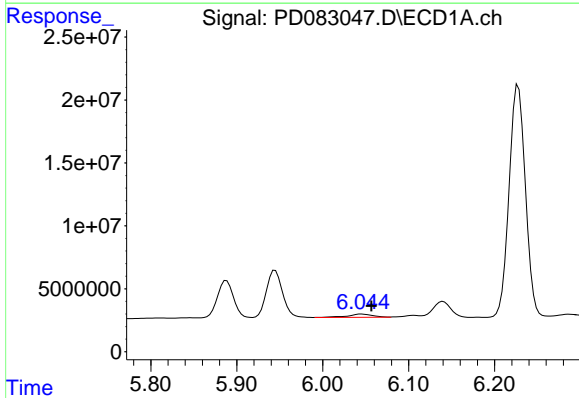
#9 Endosulfan I
 R.T.: 5.120 min
 Delta R.T.: 0.027 min
 Response: 69584973
 Conc: 15.43 ng/ml



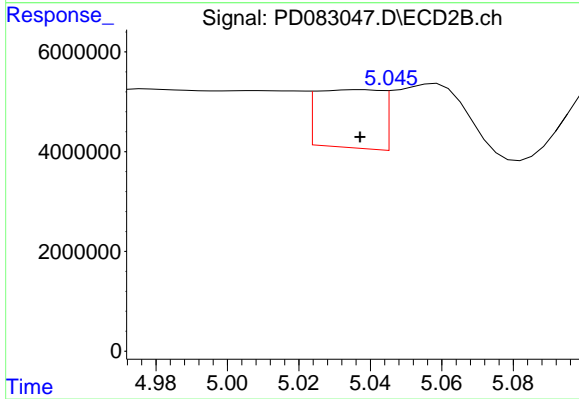
#10 trans-Chlordane
 R.T.: 5.945 min
 Delta R.T.: -0.032 min
 Response: 2049868
 Conc: 0.95 ng/ml



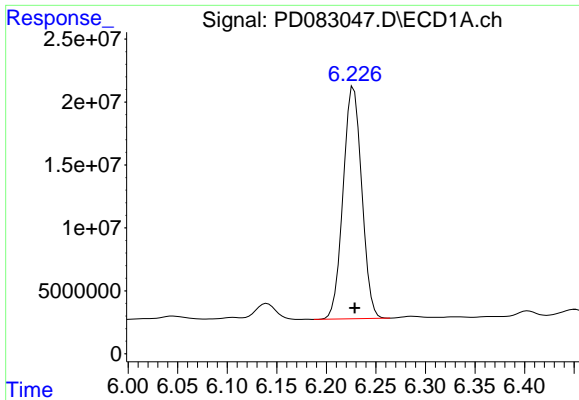
#10 trans-Chlordane
 R.T.: 4.977 min
 Delta R.T.: 0.005 min
 Response: 20930448
 Conc: 4.20 ng/ml



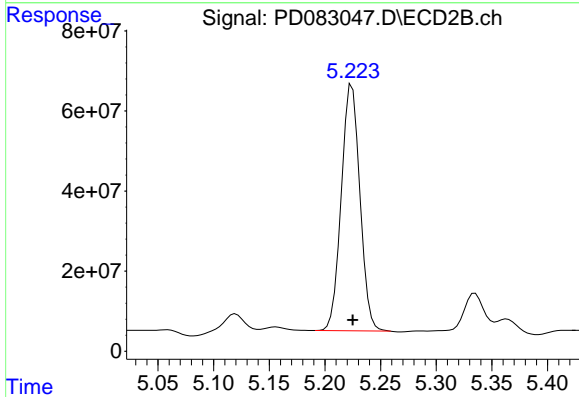
#11 cis-Chlordane
 R.T.: 6.045 min
 Delta R.T.: -0.011 min
 Response: 5014483
 Conc: 2.25 ng/ml



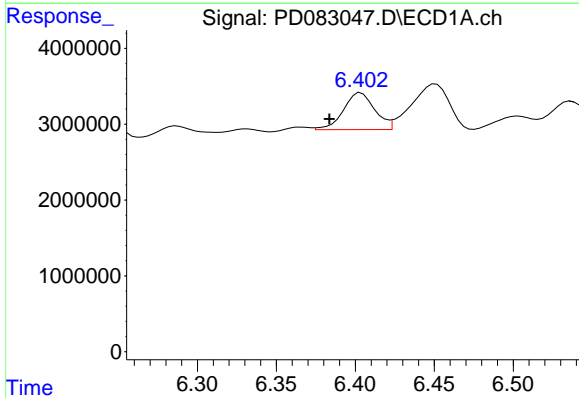
#11 cis-Chlordane
 R.T.: 5.038 min
 Delta R.T.: 0.000 min
 Response: 14799282
 Conc: 2.91 ng/ml



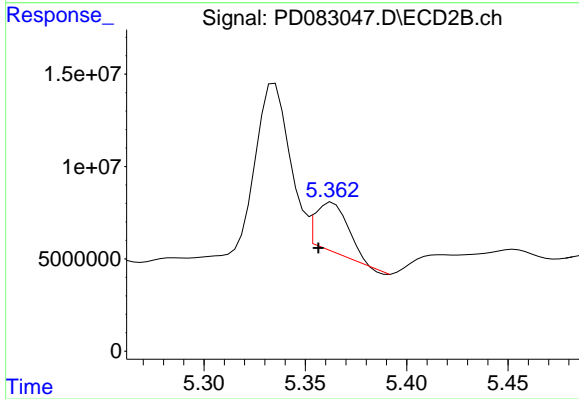
#12 4,4'-DDE
R.T.: 6.228 min
Delta R.T.: -0.001 min
Response: 241246306
Conc: 110.62 ng/ml



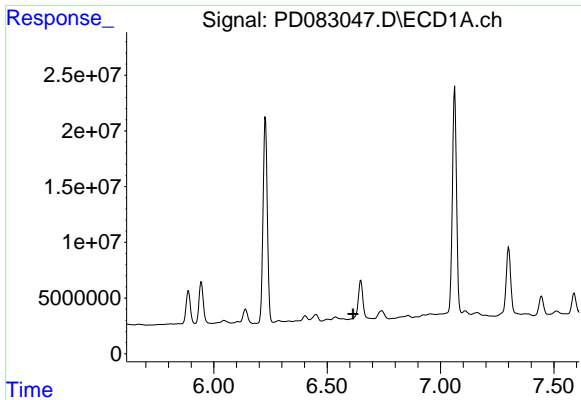
#12 4,4'-DDE
R.T.: 5.224 min
Delta R.T.: 0.000 min
Response: 717214008
Conc: 150.40 ng/ml



#13 Dieldrin
R.T.: 6.404 min
Delta R.T.: 0.020 min
Response: 6720204
Conc: 3.06 ng/ml

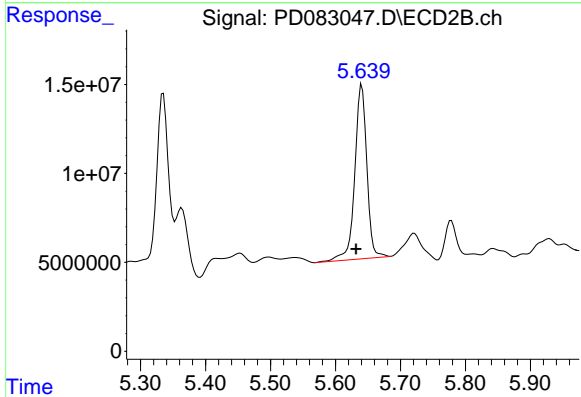


#13 Dieldrin
R.T.: 5.363 min
Delta R.T.: 0.007 min
Response: 29788558
Conc: 5.96 ng/ml



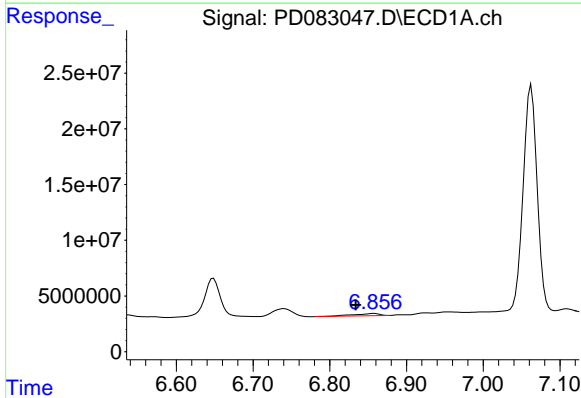
#14 Endrin

R.T.: 0.000 min
 Exp R.T. : 6.614 min
 Response: 0
 Conc: N.D.



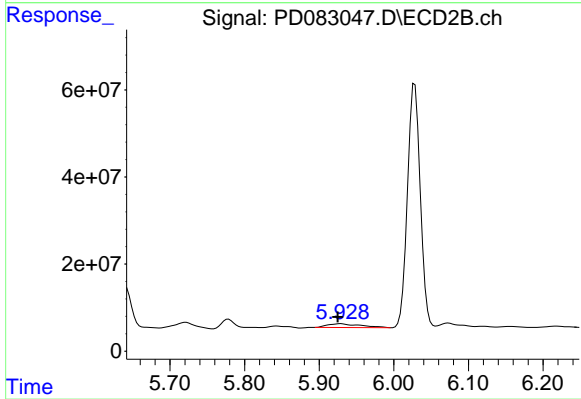
#14 Endrin

R.T.: 5.641 min
 Delta R.T.: 0.009 min
 Response: 126222081
 Conc: 28.86 ng/ml



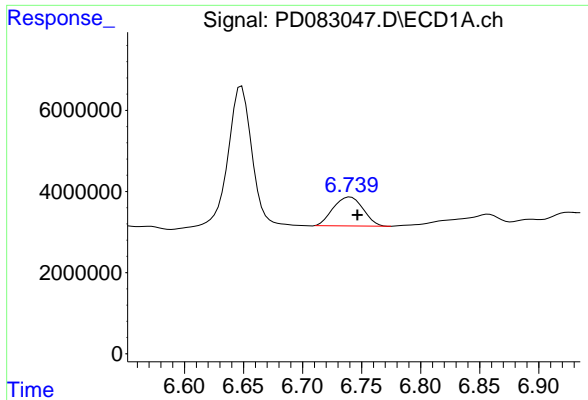
#15 Endosulfan II

R.T.: 6.858 min
 Delta R.T.: 0.024 min
 Response: 5024321
 Conc: 2.61 ng/ml



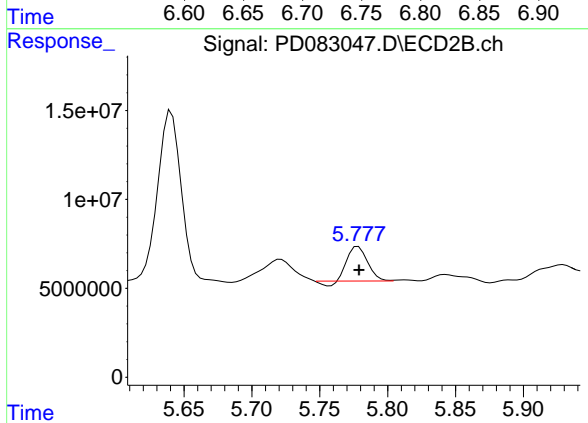
#15 Endosulfan II

R.T.: 5.928 min
 Delta R.T.: 0.004 min
 Response: 26608929
 Conc: 6.31 ng/ml



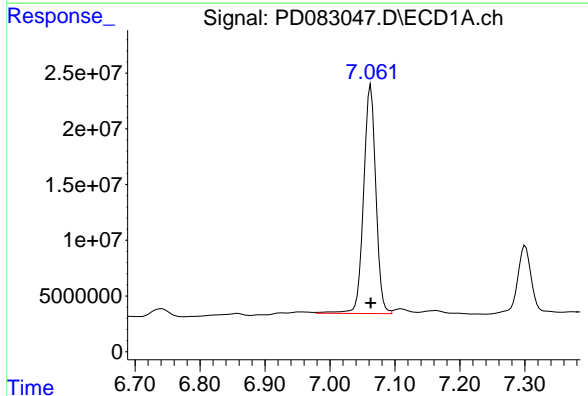
#16 4,4'-DDD

R.T.: 6.741 min
Delta R.T.: -0.006 min
Response: 12636739
Conc: 8.15 ng/ml



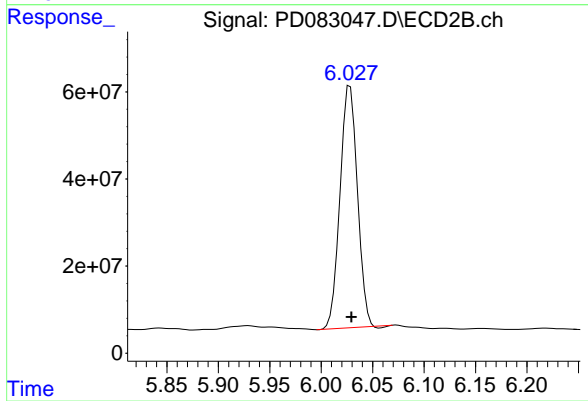
#16 4,4'-DDD

R.T.: 5.778 min
Delta R.T.: 0.000 min
Response: 19119676
Conc: 5.08 ng/ml



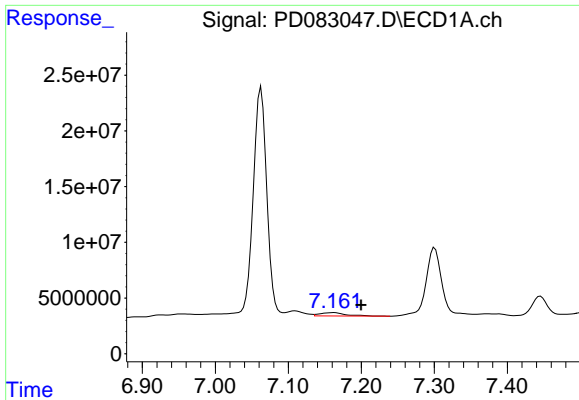
#17 4,4'-DDT

R.T.: 7.063 min
Delta R.T.: 0.000 min
Response: 268766194
Conc: 167.11 ng/ml



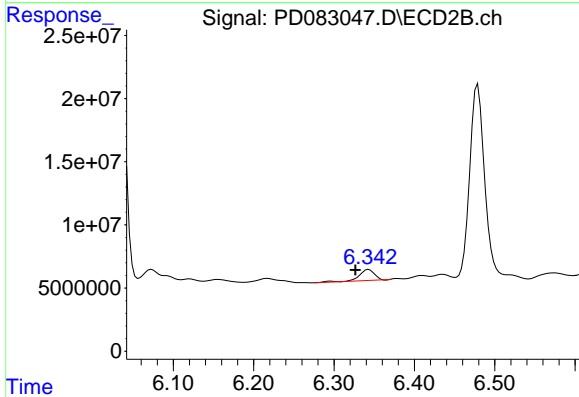
#17 4,4'-DDT

R.T.: 6.028 min
Delta R.T.: -0.001 min
Response: 653633380
Conc: 170.23 ng/ml



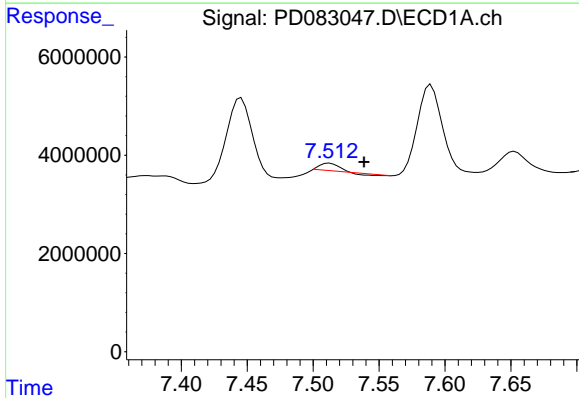
#19 Endosulfan Sulfate

R.T.: 7.162 min
 Delta R.T.: -0.038 min
 Response: 7324637
 Conc: 4.15 ng/ml



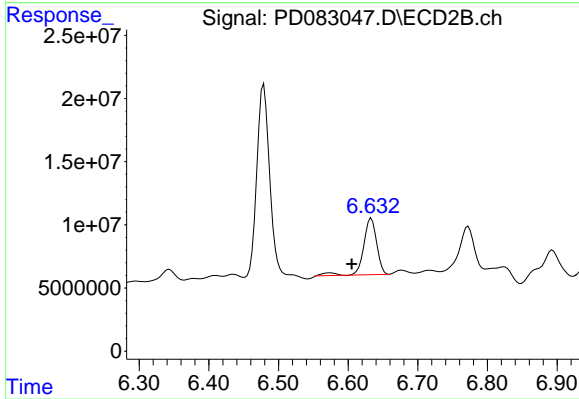
#19 Endosulfan Sulfate

R.T.: 6.343 min
 Delta R.T.: 0.017 min
 Response: 11504571
 Conc: 2.86 ng/ml



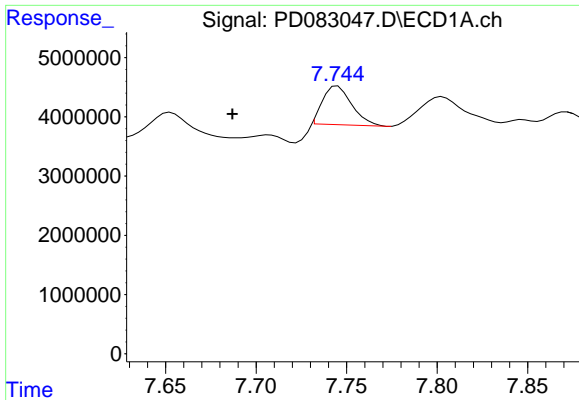
#20 Methoxychlor

R.T.: 7.512 min
 Delta R.T.: -0.026 min
 Response: 1231009
 Conc: 1.42 ng/ml



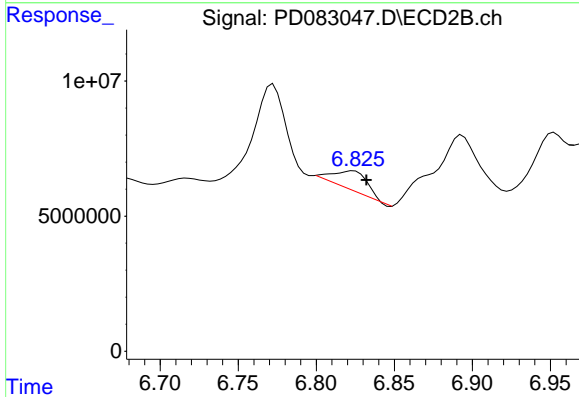
#20 Methoxychlor

R.T.: 6.633 min
 Delta R.T.: 0.028 min
 Response: 57581991
 Conc: 29.34 ng/ml



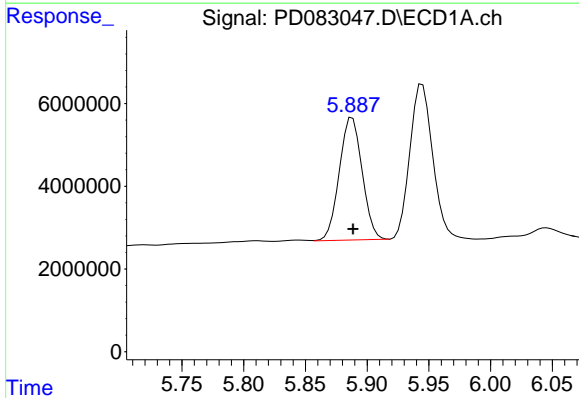
#21 Endrin ketone

R.T.: 7.745 min
 Delta R.T.: 0.058 min
 Response: 7228195
 Conc: 3.83 ng/ml



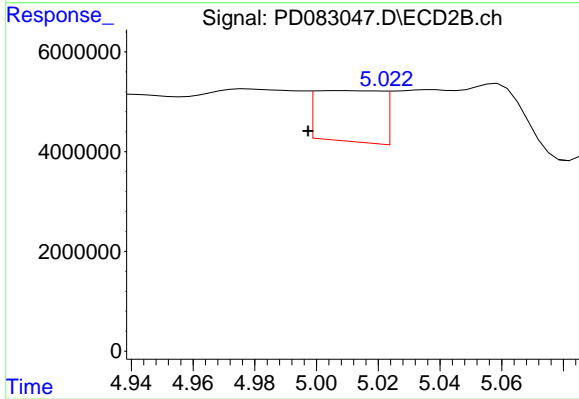
#21 Endrin ketone

R.T.: 6.821 min
 Delta R.T.: -0.011 min
 Response: 10953021
 Conc: 2.44 ng/ml



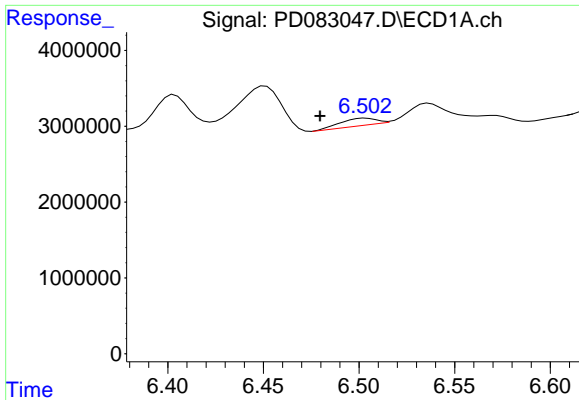
#22 Toxaphene-1

R.T.: 5.888 min
 Delta R.T.: 0.000 min
 Response: 38072353
 Conc: 5620.28 ng/ml

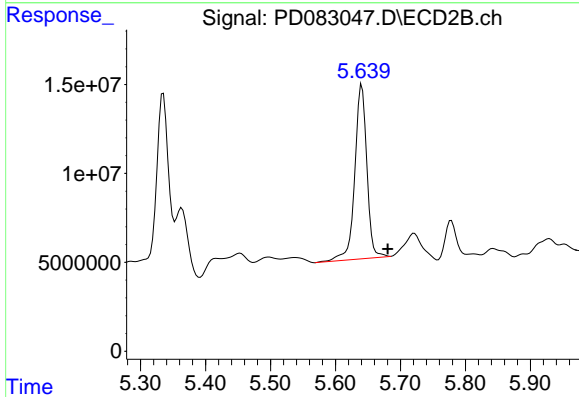


#22 Toxaphene-1

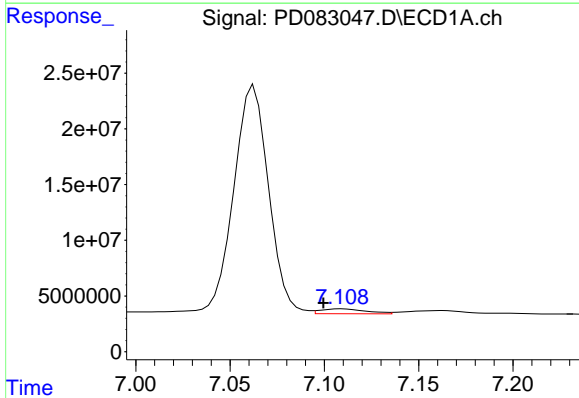
R.T.: 5.008 min
 Delta R.T.: 0.011 min
 Response: 15207140
 Conc: 574.37 ng/ml



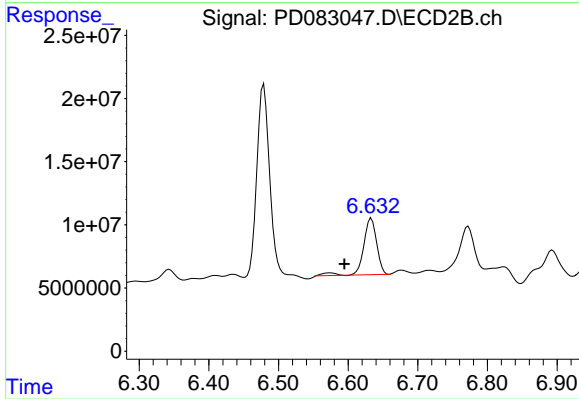
#23 Toxaphene-2
 R.T.: 6.503 min
 Delta R.T.: 0.024 min
 Response: 1235524
 Conc: 65.30 ng/ml



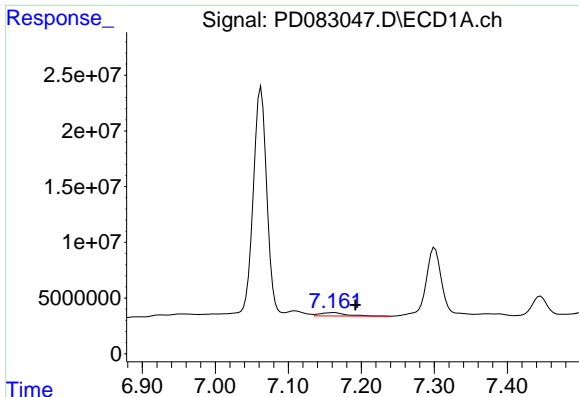
#23 Toxaphene-2
 R.T.: 5.641 min
 Delta R.T.: -0.040 min
 Response: 126222081
 Conc: 4422.11 ng/ml



#24 Toxaphene-3
 R.T.: 7.109 min
 Delta R.T.: 0.010 min
 Response: 7270766
 Conc: 137.86 ng/ml

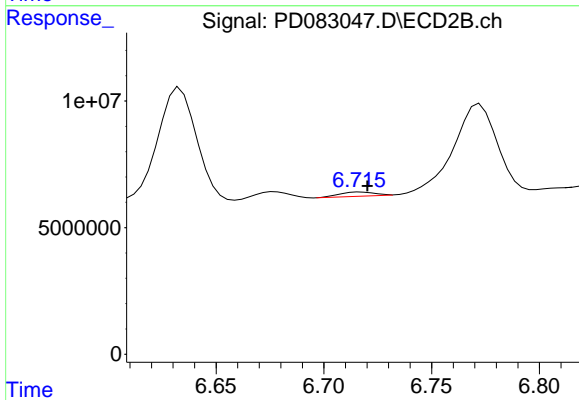


#24 Toxaphene-3
 R.T.: 6.633 min
 Delta R.T.: 0.039 min
 Response: 57581991
 Conc: 616.65 ng/ml



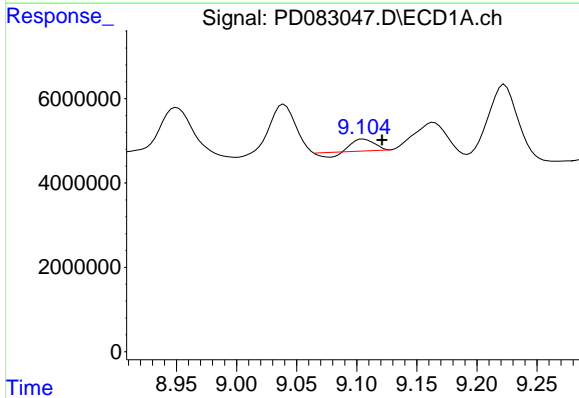
#25 Toxaphene-4

R.T.: 7.162 min
 Delta R.T.: -0.030 min
 Response: 7324637
 Conc: 187.67 ng/ml



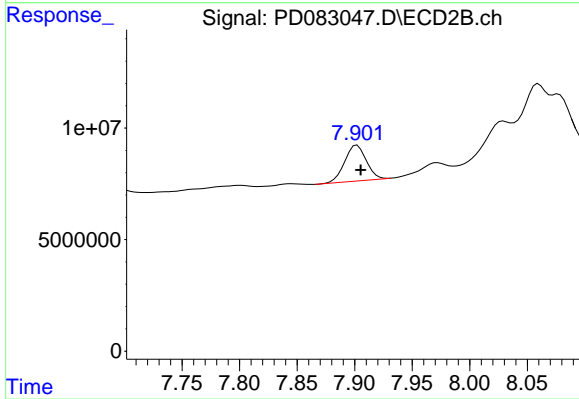
#25 Toxaphene-4

R.T.: 6.718 min
 Delta R.T.: -0.002 min
 Response: 1850115
 Conc: 14.50 ng/ml



#27 Decachlorobiphenyl

R.T.: 9.105 min
 Delta R.T.: -0.016 min
 Response: 2619079
 Conc: 1.31 ng/ml



#27 Decachlorobiphenyl

R.T.: 7.902 min
 Delta R.T.: -0.003 min
 Response: 20996700
 Conc: 5.31 ng/ml