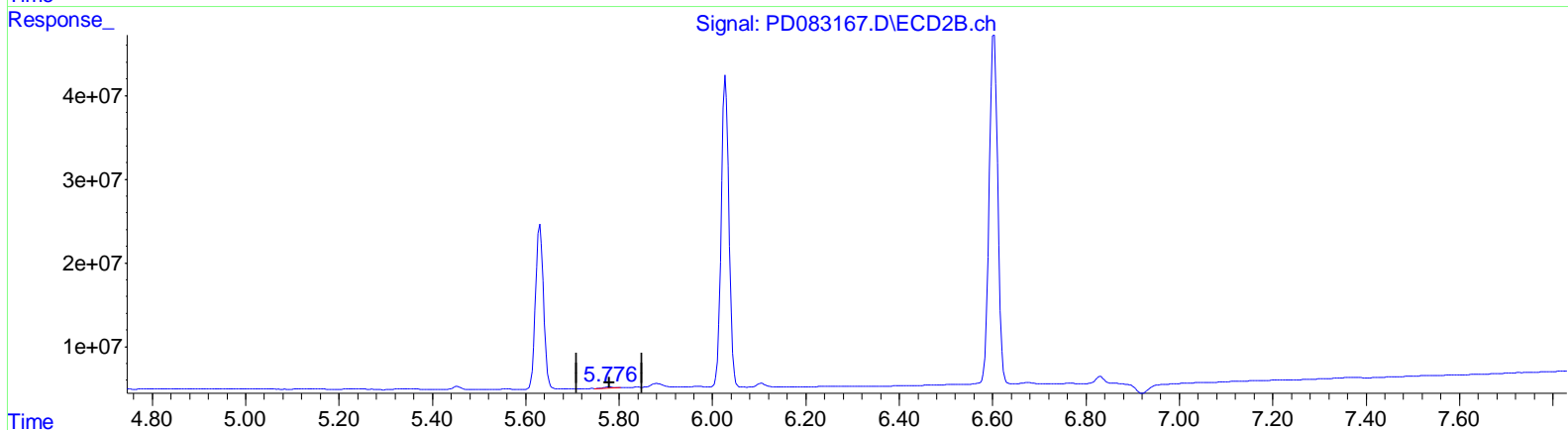
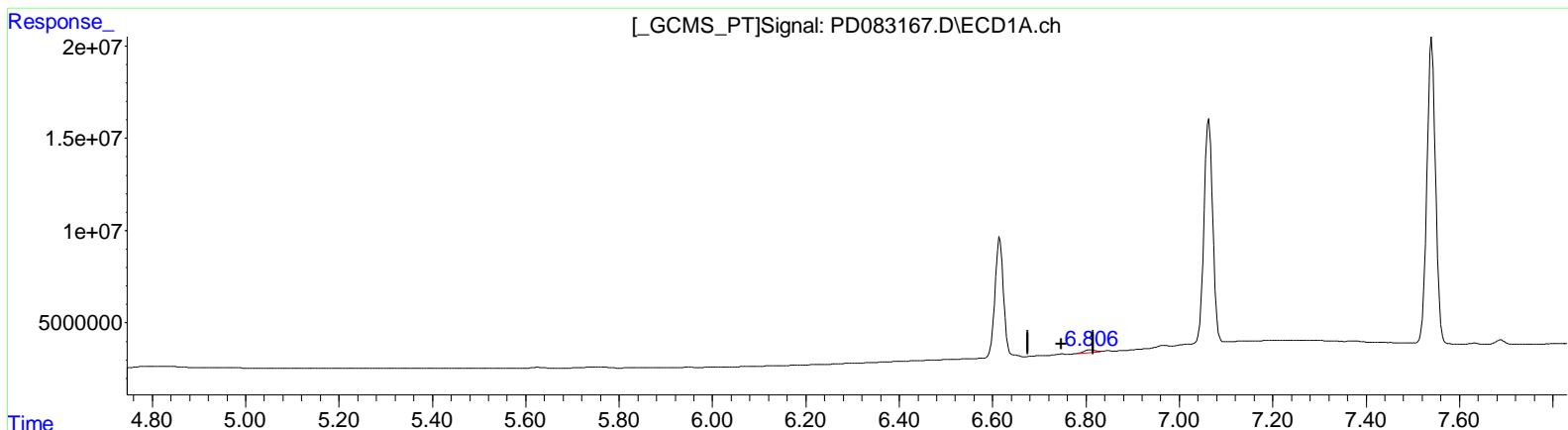


Data Path : Z:\pestpcbsrv\HPCHEM1\ECD\_D\Data\PD052824\  
 Data File : PD083167.D  
 Signal(s) : Signal #1: ECD1A.ch Signal #2: ECD2B.ch  
 Acq On : 28 May 2024 12:53  
 Operator : ARVAJ  
 Sample : PEM085  
 Misc :  
 ALS Vial : 3 Sample Multiplier: 1

Integration File signal 1: autoint1.e  
 Integration File signal 2: autoint2.e  
 Quant Time: May 28 21:25:53 2024  
 Quant Method : Z:\pestpcbsrv\HPCHEM1\ECD\_D\Method\PD051924CLP.M  
 Quant Title : GC Extractables  
 QLast Update : Fri May 17 05:17:58 2024  
 Response via : Initial Calibration  
 Integrator: ChemStation

Volume Inj. : 1 µl  
 Signal #1 Phase : ZB-MR1 Signal #2 Phase: ZB-MR2  
 Signal #1 Info : 30M x 0.32mm x 0.5 Signal #2 Info : 30M x 0.32mm x 0.25µm



QEdit

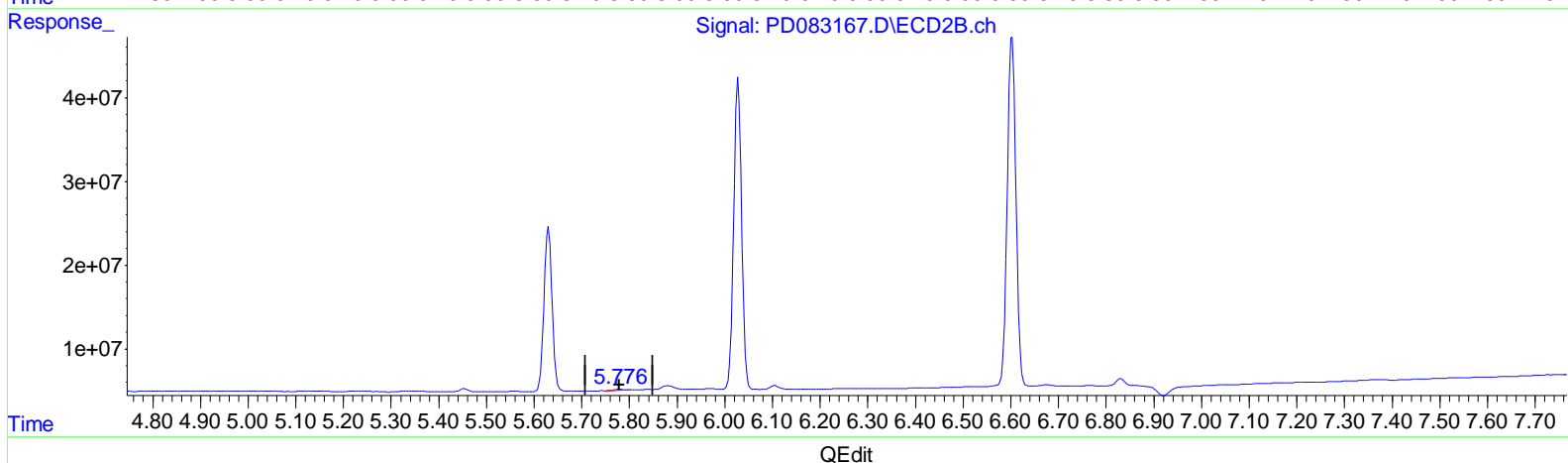
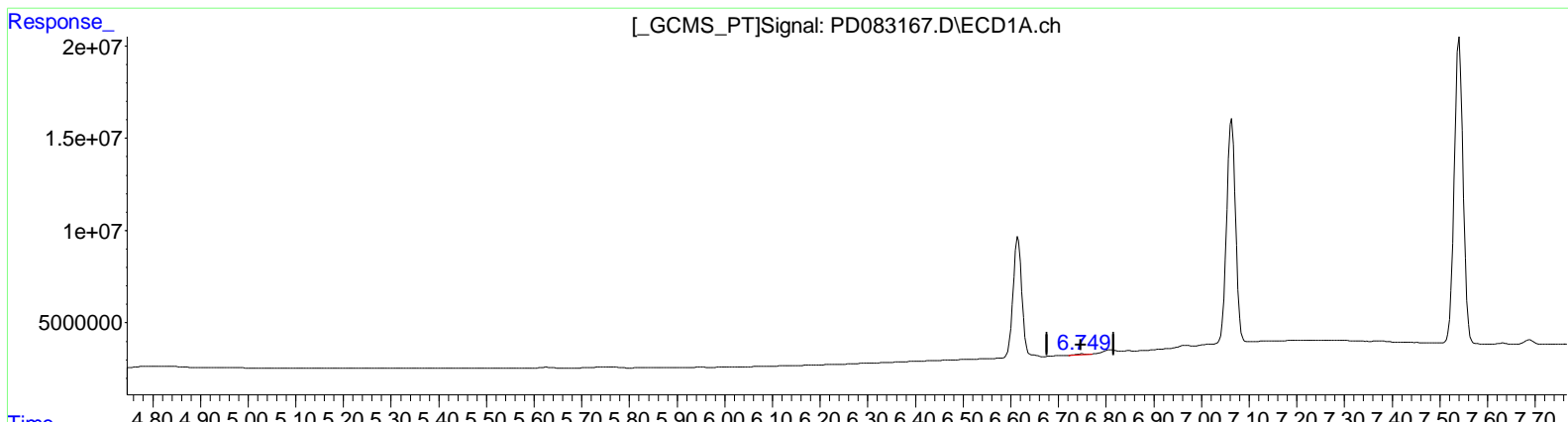
(16) 4,4'-DDD (A)  
 6.809min 1.595 ng/ml  
 response 2474004

(16) 4,4'-DDD #2 (A)  
 5.779min 0.451 ng/ml  
 response 1697494

Data Path : Z:\pestpcbsrv\HPCHEM1\ECD\_D\Data\PD052824\  
 Data File : PD083167.D  
 Signal(s) : Signal #1: ECD1A.ch Signal #2: ECD2B.ch  
 Acq On : 28 May 2024 12:53  
 Operator : ARVAJ  
 Sample : PEM085  
 Misc :  
 ALS Vial : 3 Sample Multiplier: 1

Integration File signal 1: autoint1.e  
 Integration File signal 2: autoint2.e  
 Quant Time: May 28 21:25:53 2024  
 Quant Method : Z:\pestpcbsrv\HPCHEM1\ECD\_D\Method\PD051924CLP.M  
 Quant Title : GC Extractables  
 QLast Update : Fri May 17 05:17:58 2024  
 Response via : Initial Calibration  
 Integrator: ChemStation

Volume Inj. : 1 µl  
 Signal #1 Phase : ZB-MR1 Signal #2 Phase: ZB-MR2  
 Signal #1 Info : 30M x 0.32mm x0.5 Signal #2 Info : 30M x 0.32mm x 0.25µm



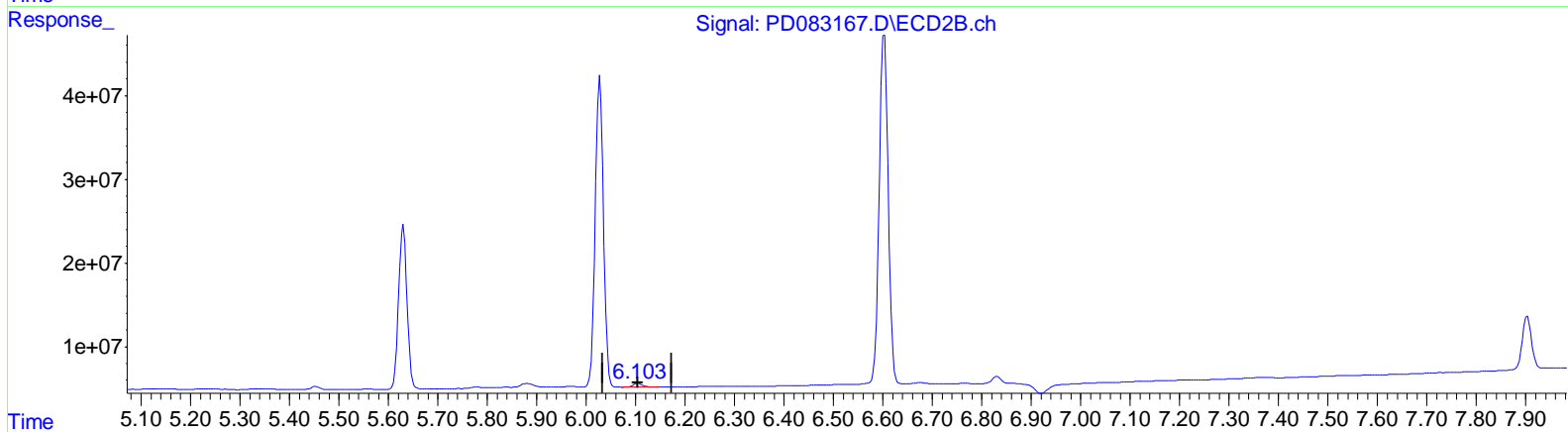
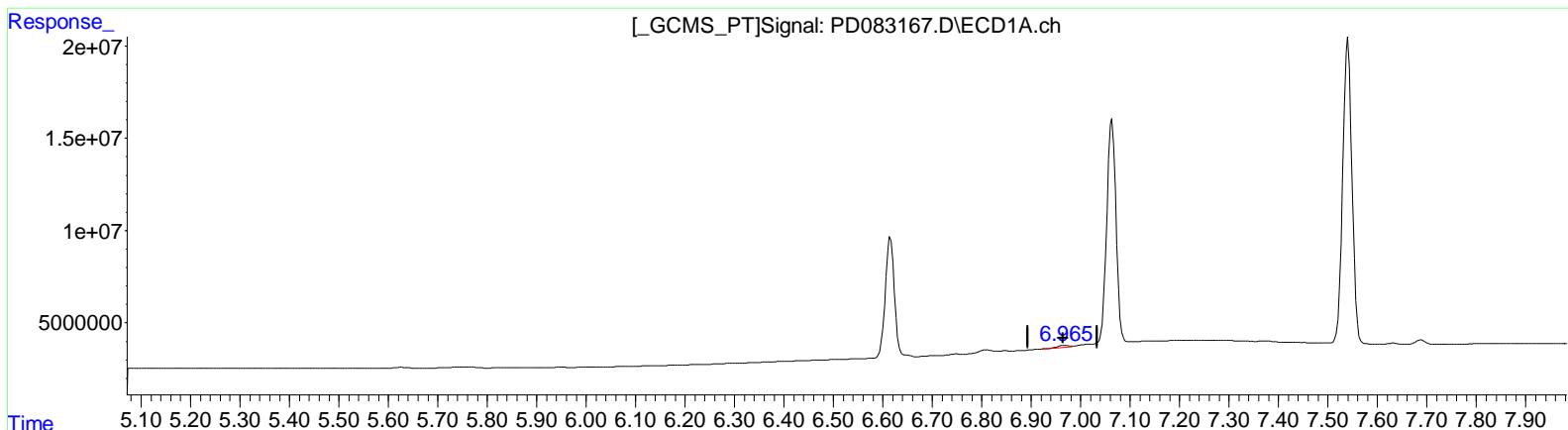
(16) 4,4'-DDD (A)  
 6.749min 0.272 ng/ml m  
 response 422213

(16) 4,4'-DDD #2 (A)  
 5.779min 0.451 ng/ml  
 response 1697494

Data Path : Z:\pestpcbsrv\HPCHEM1\ECD\_D\Data\PD052824\  
 Data File : PD083167.D  
 Signal(s) : Signal #1: ECD1A.ch Signal #2: ECD2B.ch  
 Acq On : 28 May 2024 12:53  
 Operator : ARVAJ  
 Sample : PEM085  
 Misc :  
 ALS Vial : 3 Sample Multiplier: 1

Integration File signal 1: autoint1.e  
 Integration File signal 2: autoint2.e  
 Quant Time: May 28 21:25:53 2024  
 Quant Method : Z:\pestpcbsrv\HPCHEM1\ECD\_D\Method\PD051924CLP.M  
 Quant Title : GC Extractables  
 QLast Update : Fri May 17 05:17:58 2024  
 Response via : Initial Calibration  
 Integrator: ChemStation

Volume Inj. : 1 µl  
 Signal #1 Phase : ZB-MR1 Signal #2 Phase: ZB-MR2  
 Signal #1 Info : 30M x 0.32mm x0.5 Signal #2 Info : 30M x 0.32mm x 0.25µm



QEdit

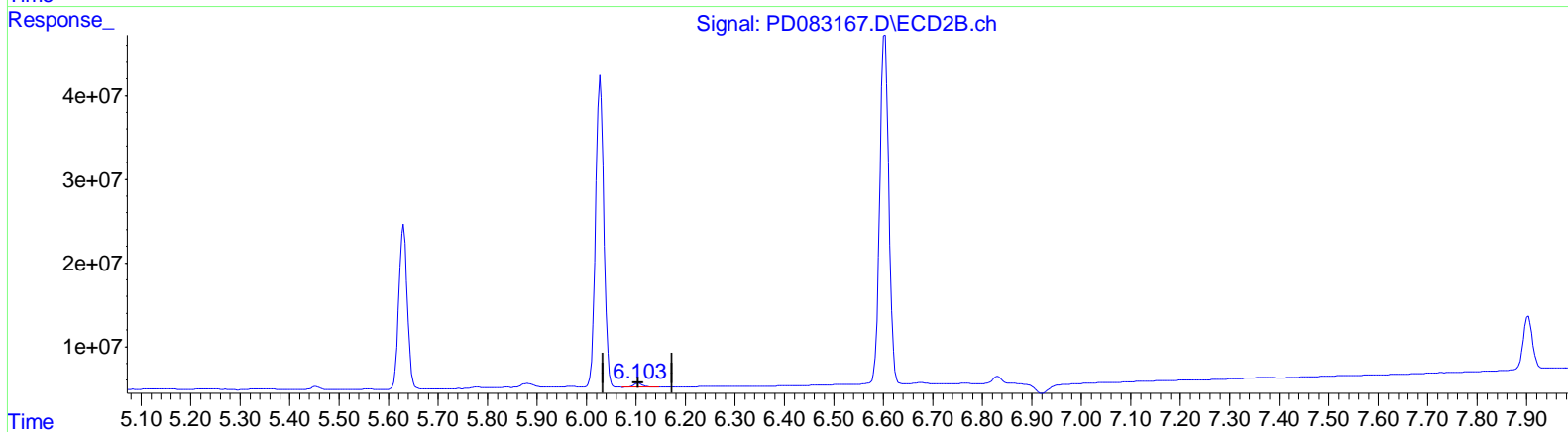
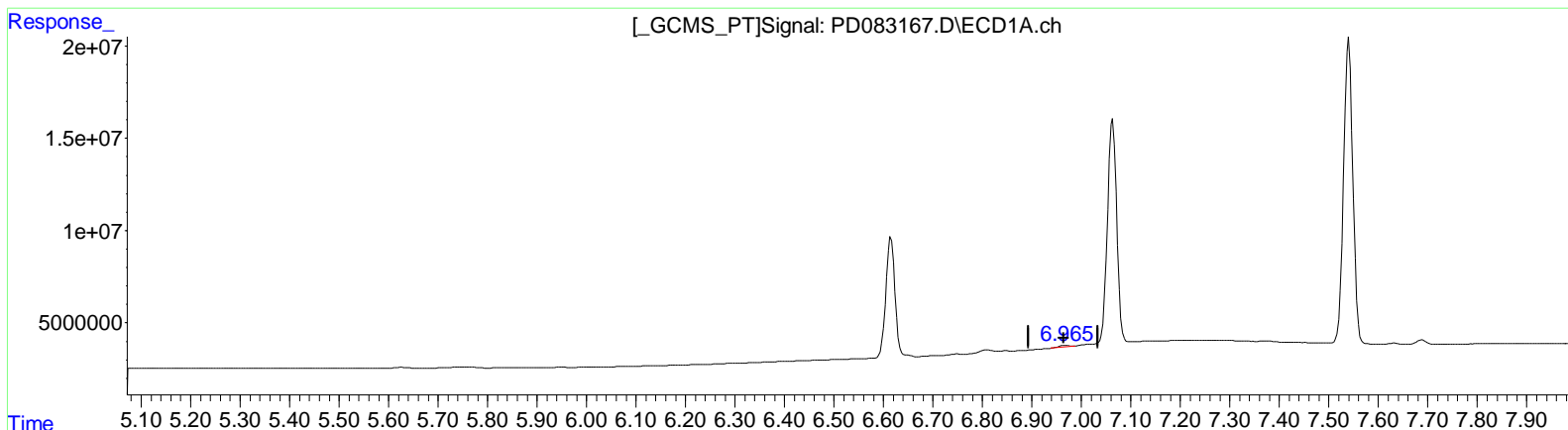
(18) Endrin aldehyde (B)  
 6.967min 1.123 ng/ml  
 response 1559522

(18) Endrin aldehyde #2 (B)  
 6.105min 1.950 ng/ml  
 response 6150836

Data Path : Z:\pestpcbsrv\HPCHEM1\ECD\_D\Data\PD052824\  
 Data File : PD083167.D  
 Signal(s) : Signal #1: ECD1A.ch Signal #2: ECD2B.ch  
 Acq On : 28 May 2024 12:53  
 Operator : ARVAJ  
 Sample : PEM085  
 Misc :  
 ALS Vial : 3 Sample Multiplier: 1

Integration File signal 1: autoint1.e  
 Integration File signal 2: autoint2.e  
 Quant Time: May 28 21:25:53 2024  
 Quant Method : Z:\pestpcbsrv\HPCHEM1\ECD\_D\Method\PD051924CLP.M  
 Quant Title : GC Extractables  
 QLast Update : Fri May 17 05:17:58 2024  
 Response via : Initial Calibration  
 Integrator: ChemStation

Volume Inj. : 1 µl  
 Signal #1 Phase : ZB-MR1 Signal #2 Phase: ZB-MR2  
 Signal #1 Info : 30M x 0.32mm x0.5 Signal #2 Info : 30M x 0.32mm x 0.25µm



QEdit

(18) Endrin aldehyde (B)  
 6.965min 1.103 ng/ml m  
 response 1531840

(18) Endrin aldehyde #2 (B)  
 6.105min 1.950 ng/ml  
 response 6150836

Data Path : Z:\pestpcbsrv\HPCHEM1\ECD\_D\Data\PD052824\  
 Data File : PD083167.D  
 Signal(s) : Signal #1: ECD1A.ch Signal #2: ECD2B.ch  
 Acq On : 28 May 2024 12:53  
 Operator : AR\AJ  
 Sample : PEM085  
 Misc :  
 ALS Vial : 3 Sample Multiplier: 1

Integration File signal 1: autoint1.e  
 Integration File signal 2: autoint2.e  
 Quant Time: May 28 21:25:53 2024  
 Quant Method : Z:\pestpcbsrv\HPCHEM1\ECD\_D\Method\PD051924CLP.M  
 Quant Title : GC Extractables  
 QLast Update : Fri May 17 05:17:58 2024  
 Response via : Initial Calibration  
 Integrator: ChemStation

Volume Inj. : 1 µl  
 Signal #1 Phase : ZB-MR1 Signal #2 Phase: ZB-MR2  
 Signal #1 Info : 30M x 0.32mm x 0.5 Signal #2 Info : 30M x 0.32mm x 0.25µm

Compound	RT#1	RT#2	Resp#1	Resp#2	ng/ml	ng/ml
-----						
System Monitoring Compounds						
1) SA Tetrachloro...	3.563	2.773	30295301	93657249	20.254	24.085
27) SA Decachloro...	9.124	7.903	36601628	81427064	18.261	20.581
Target Compounds						
2) A alpha-BHC	4.021	3.272	24689779	70727564	9.677	11.378
3) MA gamma-BHC...	4.355	3.601	24298865	61440783	9.847	10.618
6) B beta-BHC	4.552	3.898	10551624	28622062	9.726	11.412
14) MA Endrin	6.615	5.631	81557041	232.9E6	45.736	53.244
16) A 4,4'-DDD	6.749	5.779	422213	1697494	0.272m	0.451 #
17) MA 4,4'-DDT	7.063	6.028	159.4E6	430.7E6	99.077	112.173
18) B Endrin al...	6.965	6.105	1531840	6150836	1.103m	1.950 #
20) A Methoxychlor	7.541	6.603	214.7E6	533.3E6	248.147	271.758
21) B Endrin ke...	7.688	6.831	3010339	10820513	1.597	2.406 #
-----						

(f)=RT Delta > 1/2 Window (#)=Amounts differ by > 25% (m)=manual int.

Data Path : Z:\pestpcbsrv\HPCHEM1\ECD\_D\Data\PD052824\  
 Data File : PD083167.D  
 Signal(s) : Signal #1: ECD1A.ch Signal #2: ECD2B.ch  
 Acq On : 28 May 2024 12:53  
 Operator : ARVAJ  
 Sample : PEM085  
 Misc :  
 ALS Vial : 3 Sample Multiplier: 1

Integration File signal 1: autoint1.e  
 Integration File signal 2: autoint2.e  
 Quant Time: May 28 21:25:53 2024  
 Quant Method : Z:\pestpcbsrv\HPCHEM1\ECD\_D\Method\PD051924CLP.M  
 Quant Title : GC Extractables  
 QLast Update : Fri May 17 05:17:58 2024  
 Response via : Initial Calibration  
 Integrator: ChemStation

Volume Inj. : 1 µl  
 Signal #1 Phase : ZB-MR1 Signal #2 Phase: ZB-MR2  
 Signal #1 Info : 30M x 0.32mm x 0.5 Signal #2 Info : 30M x 0.32mm x 0.25µm

