

Data Path : Z:\pestpcbsrv\HPCHEM1\ECD_D\Data\PD052724\
 Data File : PD083114.D
 Signal(s) : Signal #1: ECD1A.ch Signal #2: ECD2B.ch
 Acq On : 27 May 2024 00:25
 Operator : AR\AJ
 Sample : P2549-09MS
 Misc :
 ALS Vial : 23 Sample Multiplier: 1

Integration File signal 1: autoint1.e
 Integration File signal 2: autoint2.e
 Quant Time: May 27 01:31:41 2024
 Quant Method : Z:\pestpcbsrv\HPCHEM1\ECD_D\Method\PD051924CLP.M
 Quant Title : GC Extractables
 QLast Update : Fri May 17 05:17:58 2024
 Response via : Initial Calibration
 Integrator: ChemStation

Volume Inj. : 1 µl
 Signal #1 Phase : ZB-MR2 Signal #2 Phase: ZB-MR2
 Signal #1 Info : 30M x 0.32mm x0.5 Signal #2 Info : 30M x 0.32mm x 0.25µm

Compound	RT#1	RT#2	Resp#1	Resp#2	ng/ml	ng/ml

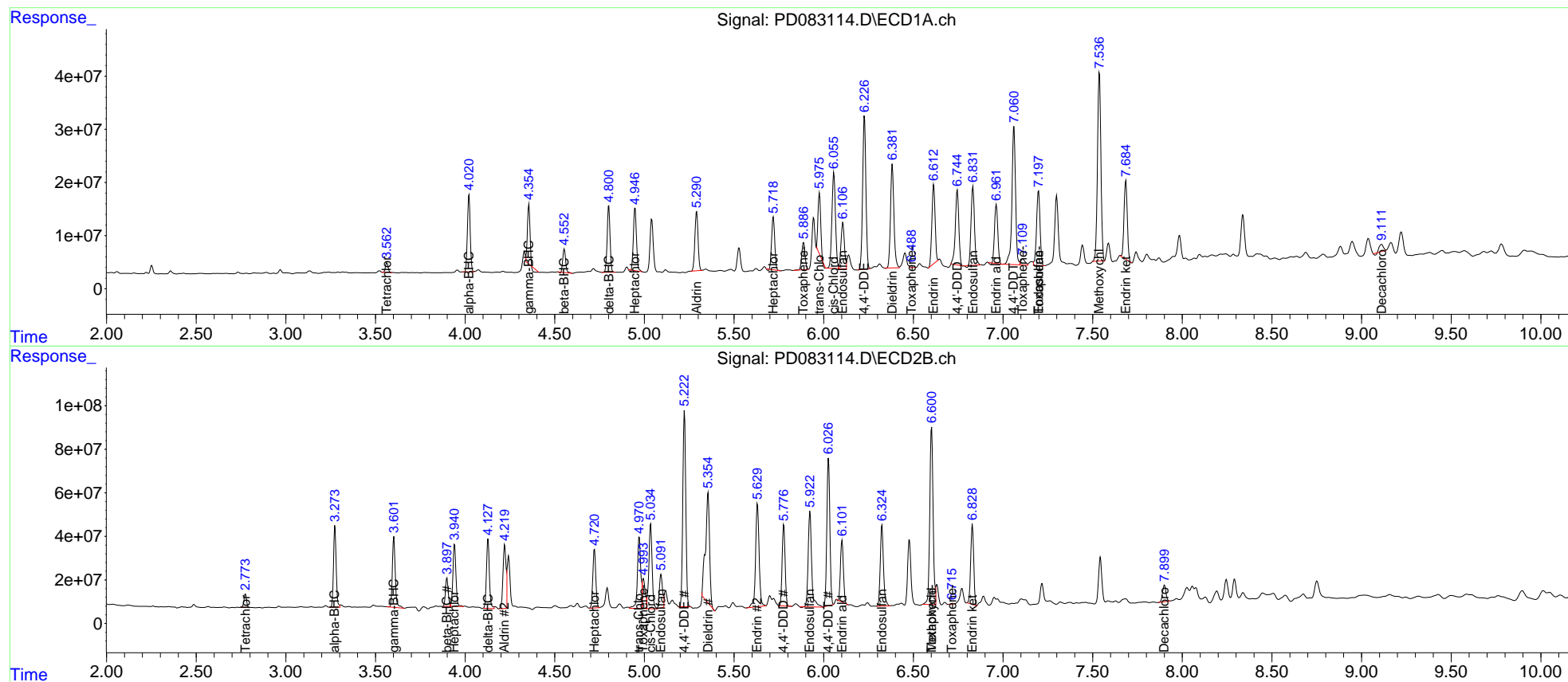
System Monitoring Compounds						
1) SA Tetrachlo...	3.564	2.775	17933127	60571069	11.989	15.576 #
27) SA Decachlor...	9.112	7.901	18260526	100.5E6	9.110	25.393 #
Target Compounds						
2) A alpha-BHC	4.022	3.274	156.1E6	384.5E6	61.195	61.854
3) MA gamma-BHC...	4.356	3.603	101.5E6	363.4E6	41.131	62.796 #
4) MA Heptachlor	4.948	3.941	137.6E6	331.1E6	54.633	59.467
5) MB Aldrin	5.292	4.221	137.0E6	335.2E6	56.599	60.637
6) B beta-BHC	4.553	3.899	47388555	135.8E6	43.680	54.128
7) B delta-BHC	4.801	4.128	139.4E6	359.4E6	56.939	60.756
8) B Heptachlo...	5.719	4.722	117.7E6	307.3E6	52.700	60.149
9) A Endosulfan I	6.107	5.093	112.8E6	178.3E6	54.185	39.529 #
10) B trans-Chl...	5.976	4.971	118.3E6	423.9E6	54.637	85.113 #
11) B cis-Chlor...	6.057	5.035	247.7E6	490.7E6	110.927	96.617
12) B 4,4'-DDE	6.227	5.224	363.2E6	1026.9E6	166.529	215.343 #
13) MA Dieldrin	6.383	5.355	256.9E6	795.8E6	116.873	159.244 #
14) MA Endrin	6.614	5.631	184.2E6	643.6E6	103.298	147.148 #
15) B Endosulfa...	6.832	5.924	193.9E6	587.2E6	100.638	139.345 #
16) A 4,4'-DDD	6.745	5.777	191.6E6	426.5E6	123.524	113.336
17) MA 4,4'-DDT	7.061	6.027	363.5E6	795.1E6	225.991	207.081
18) B Endrin al...	6.963	6.103	140.0E6	321.5E6	100.813	101.950
19) B Endosulfa...	7.198	6.325	191.2E6	464.3E6	108.344	115.482
20) A Methoxychlor	7.538	6.602	470.5E6	1043.4E6	543.897	531.761
21) B Endrin ke...	7.685	6.830	185.0E6	424.9E6	98.114	94.478
22) Toxaphene-1	5.888	4.994	65329843	153.7E6	9644.051	5803.528 #
23) Toxaphene-2	6.490	5.721f	6138471	-770111	324.428	N.D. #
24) Toxaphene-3	7.110	6.602	19402542	1043.4E6	367.876	11174.349 #
25) Toxaphene-4	7.198	6.718	191.2E6	1933064	4899.289	15.148 #

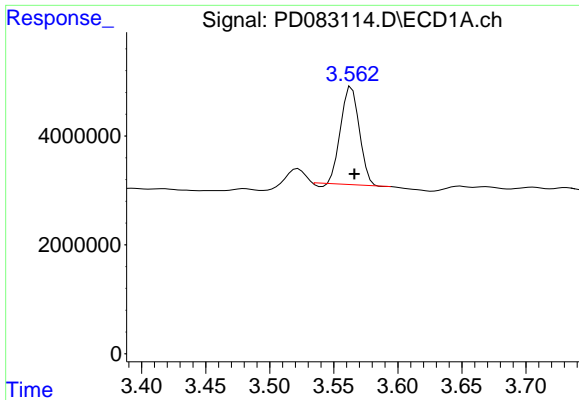
(f)=RT Delta > 1/2 Window (#)=Amounts differ by > 25% (m)=manual int.

Data Path : Z:\pestpcbsrv\HPCHEM1\ECD_D\Data\PD052724\
 Data File : PD083114.D
 Signal(s) : Signal #1: ECD1A.ch Signal #2: ECD2B.ch
 Acq On : 27 May 2024 00:25
 Operator : AR\AJ
 Sample : P2549-09MS
 Misc :
 ALS Vial : 23 Sample Multiplier: 1

Integration File signal 1: autoint1.e
 Integration File signal 2: autoint2.e
 Quant Time: May 27 01:31:41 2024
 Quant Method : Z:\pestpcbsrv\HPCHEM1\ECD_D\Method\PD051924CLP.M
 Quant Title : GC Extractables
 QLast Update : Fri May 17 05:17:58 2024
 Response via : Initial Calibration
 Integrator: ChemStation

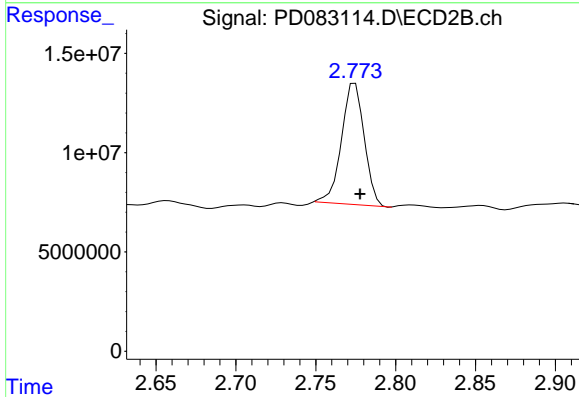
Volume Inj. : 1 µl
 Signal #1 Phase : ZB-MR1 Signal #2 Phase: ZB-MR2
 Signal #1 Info : 30M x 0.32mm x0.5 Signal #2 Info : 30M x 0.32mm x 0.25µm





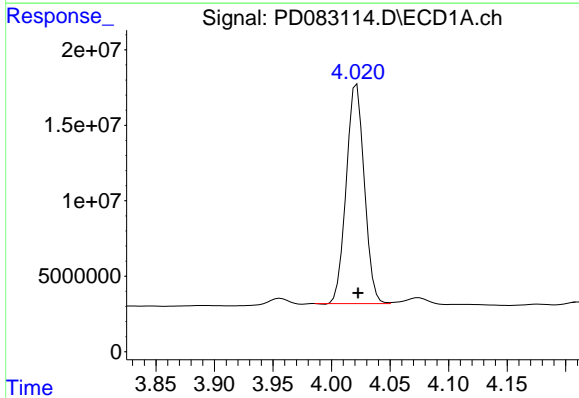
#1 Tetrachloro-m-xylene

R.T.: 3.564 min
Delta R.T.: -0.002 min
Response: 17933127
Conc: 11.99 ng/ml



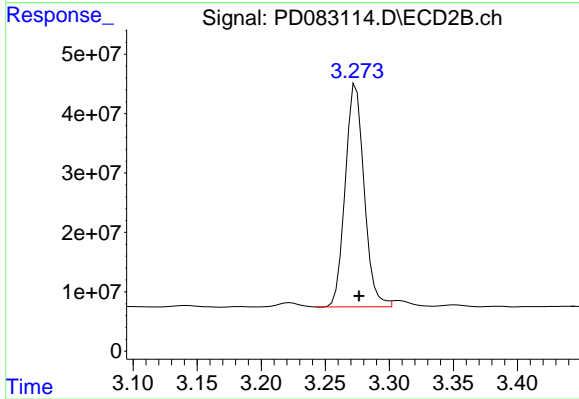
#1 Tetrachloro-m-xylene

R.T.: 2.775 min
Delta R.T.: -0.003 min
Response: 60571069
Conc: 15.58 ng/ml



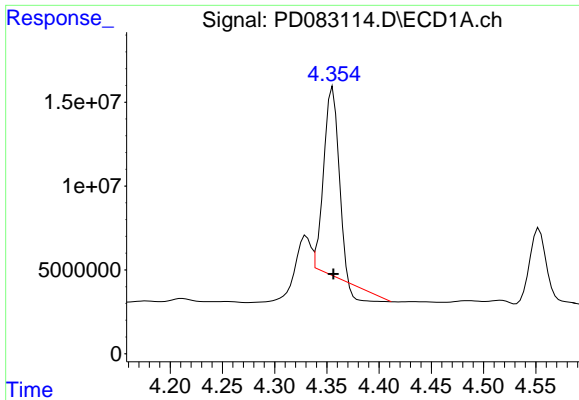
#2 alpha-BHC

R.T.: 4.022 min
Delta R.T.: -0.001 min
Response: 156128898
Conc: 61.20 ng/ml



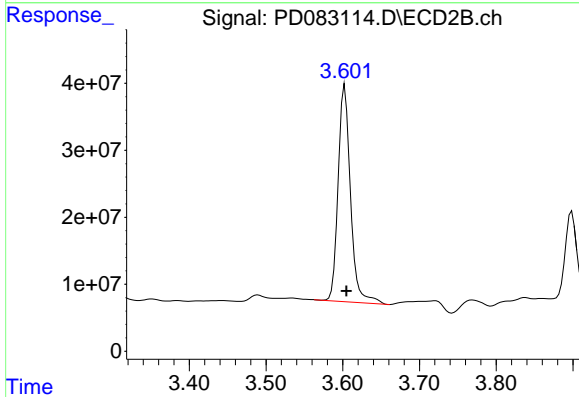
#2 alpha-BHC

R.T.: 3.274 min
Delta R.T.: -0.002 min
Response: 384512899
Conc: 61.85 ng/ml



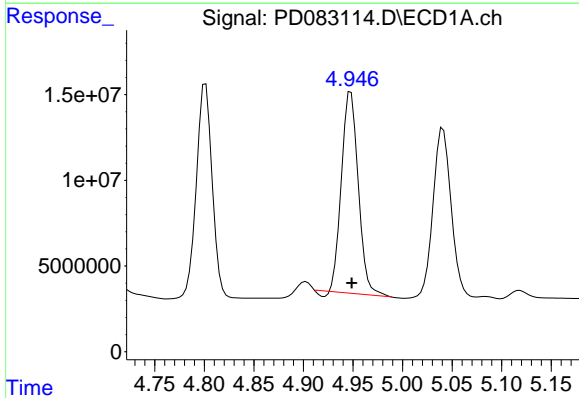
#3 gamma-BHC (Lindane)

R.T.: 4.356 min
Delta R.T.: 0.000 min
Response: 101499221
Conc: 41.13 ng/ml



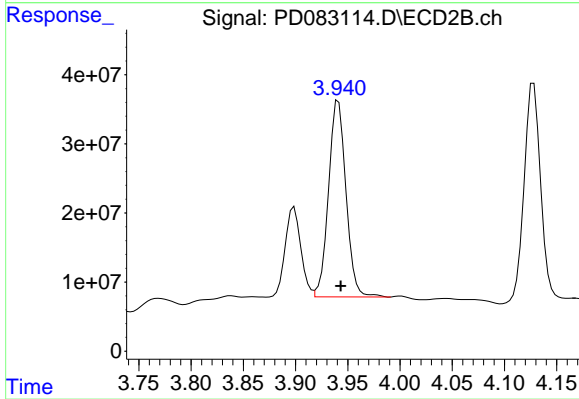
#3 gamma-BHC (Lindane)

R.T.: 3.603 min
Delta R.T.: -0.002 min
Response: 363354785
Conc: 62.80 ng/ml



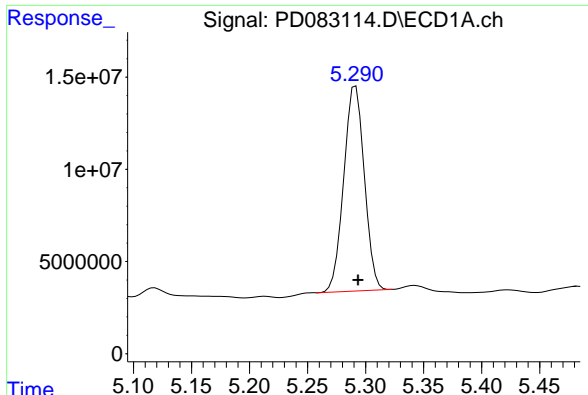
#4 Heptachlor

R.T.: 4.948 min
Delta R.T.: 0.000 min
Response: 137564552
Conc: 54.63 ng/ml

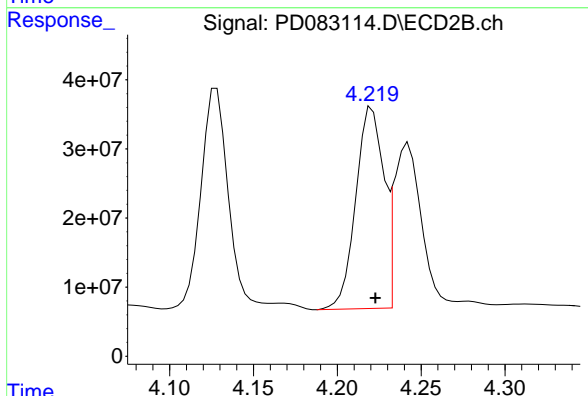


#4 Heptachlor

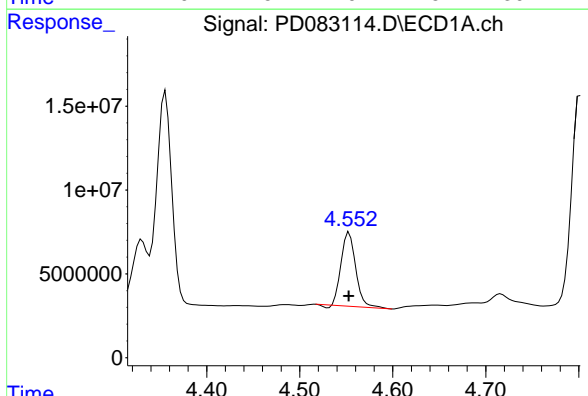
R.T.: 3.941 min
Delta R.T.: -0.002 min
Response: 331125765
Conc: 59.47 ng/ml



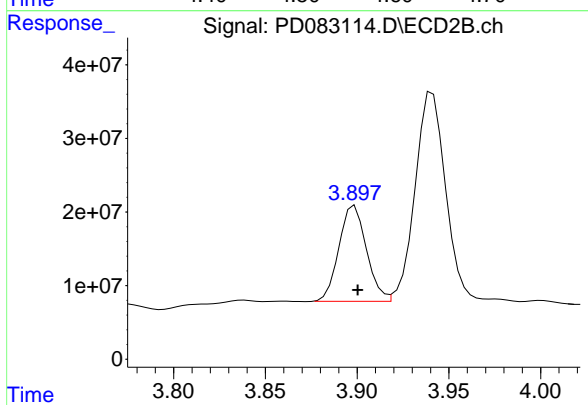
#5 Aldrin
R.T.: 5.292 min
Delta R.T.: -0.002 min
Response: 137039591
Conc: 56.60 ng/ml



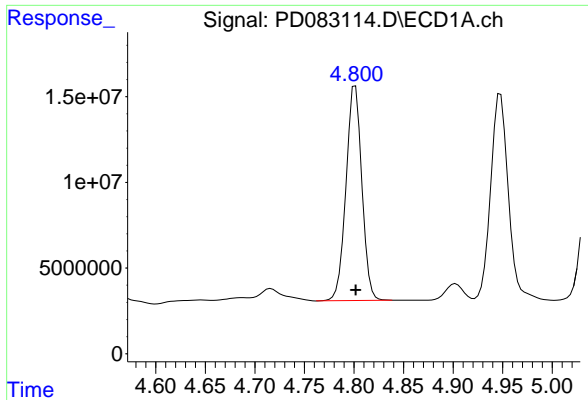
#5 Aldrin
R.T.: 4.221 min
Delta R.T.: -0.002 min
Response: 335156066
Conc: 60.64 ng/ml



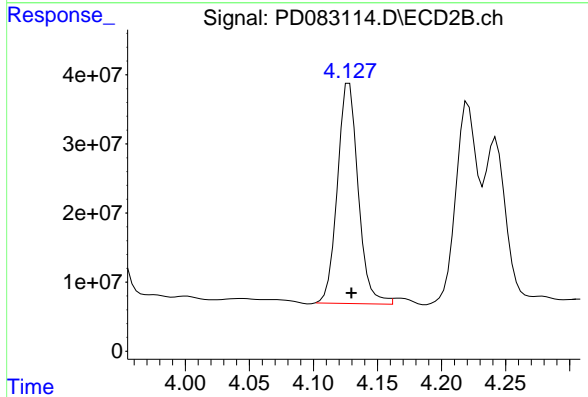
#6 beta-BHC
R.T.: 4.553 min
Delta R.T.: 0.000 min
Response: 47388555
Conc: 43.68 ng/ml



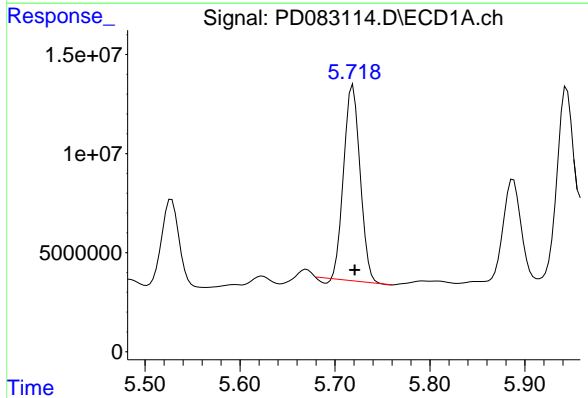
#6 beta-BHC
R.T.: 3.899 min
Delta R.T.: -0.002 min
Response: 135752412
Conc: 54.13 ng/ml



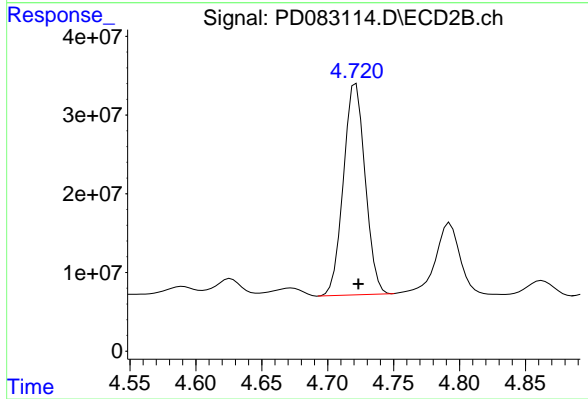
#7 delta-BHC
R.T.: 4.801 min
Delta R.T.: 0.000 min
Response: 139421603
Conc: 56.94 ng/ml



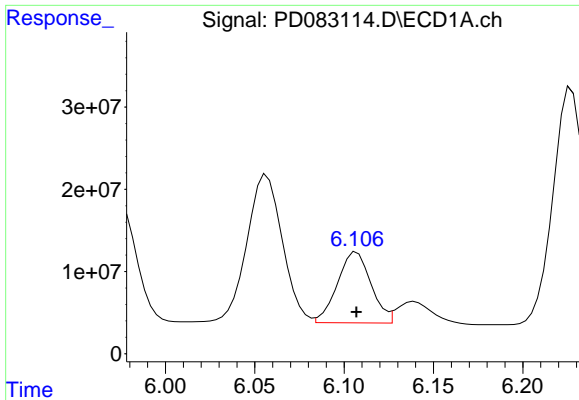
#7 delta-BHC
R.T.: 4.128 min
Delta R.T.: -0.002 min
Response: 359432994
Conc: 60.76 ng/ml



#8 Heptachlor epoxide
R.T.: 5.719 min
Delta R.T.: -0.002 min
Response: 117687501
Conc: 52.70 ng/ml

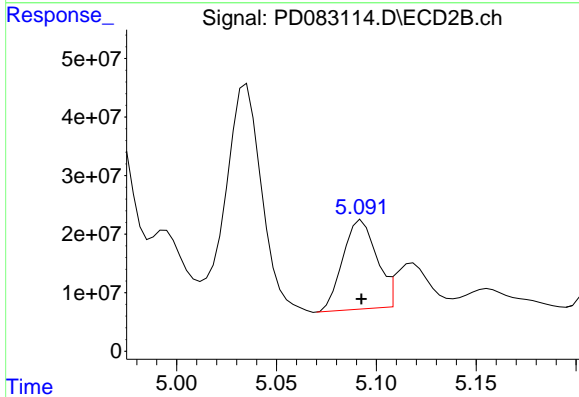


#8 Heptachlor epoxide
R.T.: 4.722 min
Delta R.T.: -0.002 min
Response: 307300302
Conc: 60.15 ng/ml



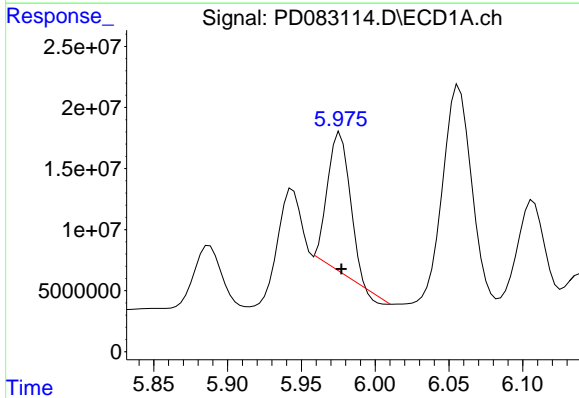
#9 Endosulfan I

R.T.: 6.107 min
Delta R.T.: 0.000 min
Response: 112751522
Conc: 54.18 ng/ml



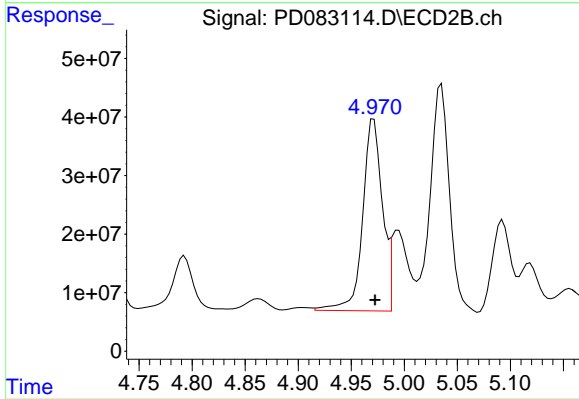
#9 Endosulfan I

R.T.: 5.093 min
Delta R.T.: 0.000 min
Response: 178273370
Conc: 39.53 ng/ml



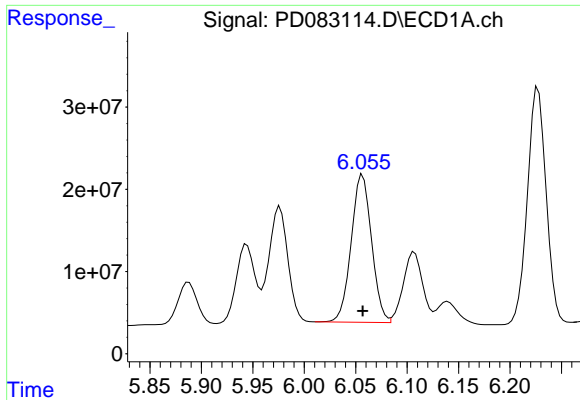
#10 trans-Chlordane

R.T.: 5.976 min
Delta R.T.: 0.000 min
Response: 118273204
Conc: 54.64 ng/ml



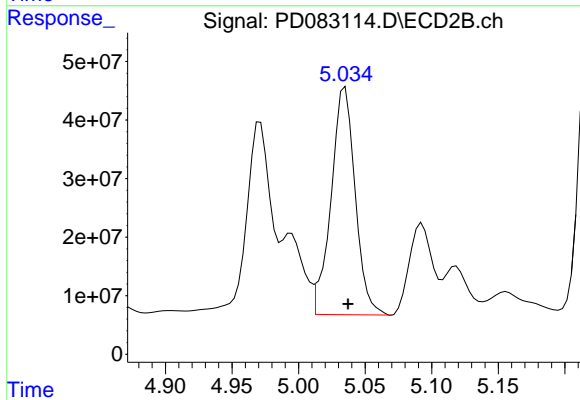
#10 trans-Chlordane

R.T.: 4.971 min
Delta R.T.: -0.001 min
Response: 423858415
Conc: 85.11 ng/ml



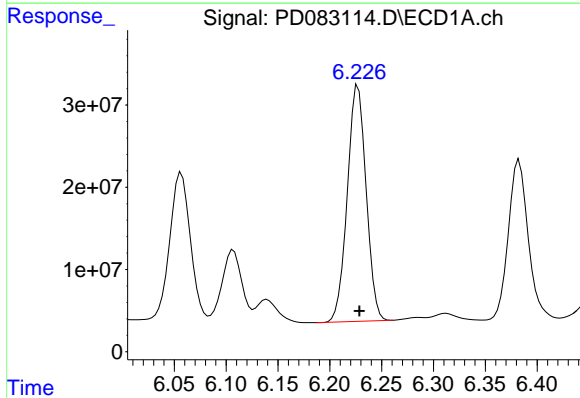
#11 cis-Chlordane

R.T.: 6.057 min
Delta R.T.: 0.000 min
Response: 247742721
Conc: 110.93 ng/ml



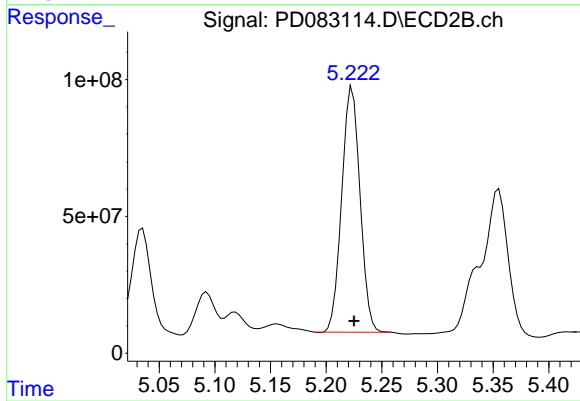
#11 cis-Chlordane

R.T.: 5.035 min
Delta R.T.: -0.002 min
Response: 490732140
Conc: 96.62 ng/ml



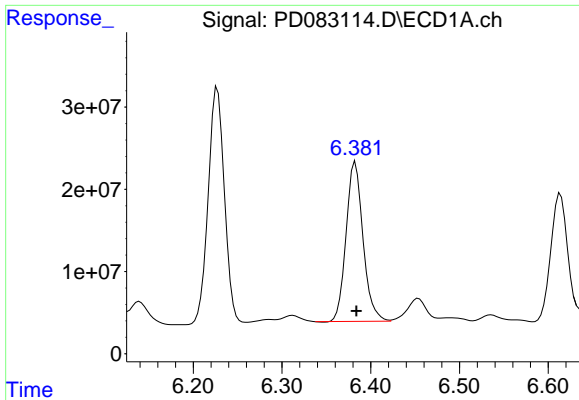
#12 4,4'-DDE

R.T.: 6.227 min
Delta R.T.: -0.001 min
Response: 363161509
Conc: 166.53 ng/ml



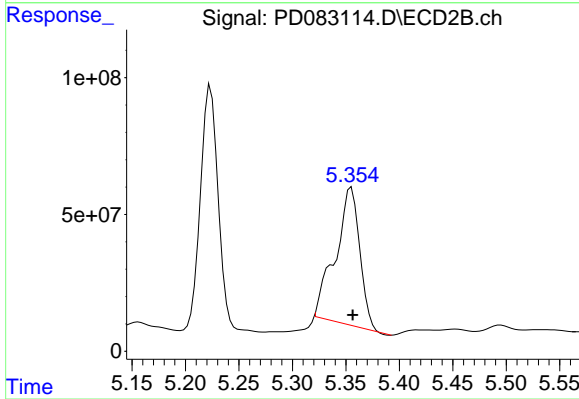
#12 4,4'-DDE

R.T.: 5.224 min
Delta R.T.: -0.002 min
Response: 1026923141
Conc: 215.34 ng/ml



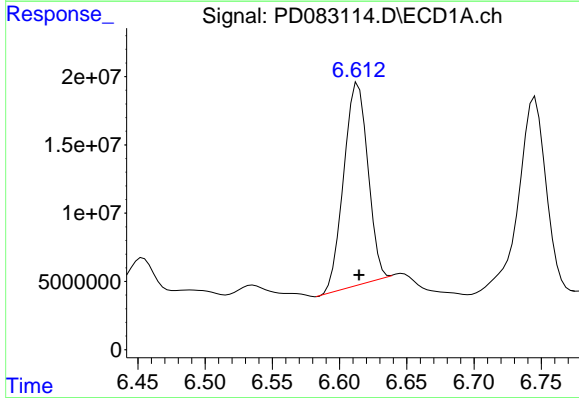
#13 Dieldrin

R.T.: 6.383 min
Delta R.T.: -0.001 min
Response: 256871746
Conc: 116.87 ng/ml



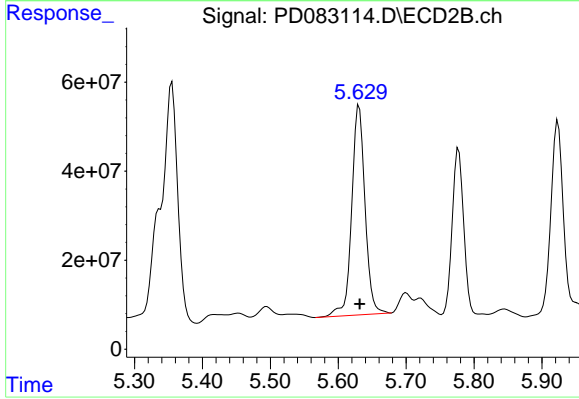
#13 Dieldrin

R.T.: 5.355 min
Delta R.T.: -0.001 min
Response: 795755122
Conc: 159.24 ng/ml



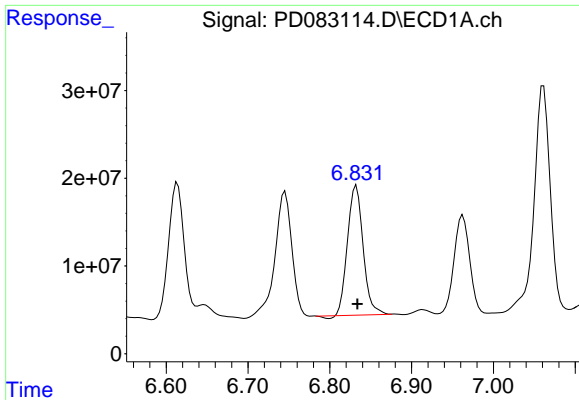
#14 Endrin

R.T.: 6.614 min
Delta R.T.: 0.000 min
Response: 184201485
Conc: 103.30 ng/ml



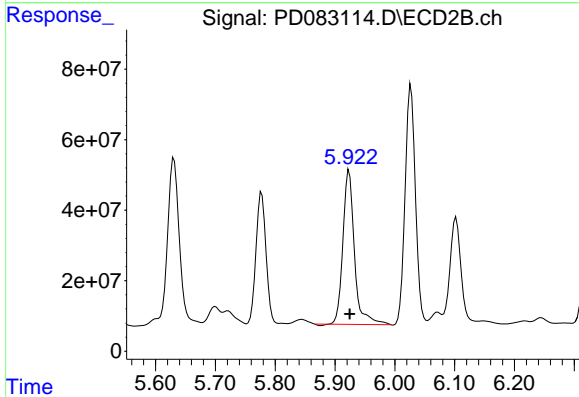
#14 Endrin

R.T.: 5.631 min
Delta R.T.: 0.000 min
Response: 643567590
Conc: 147.15 ng/ml



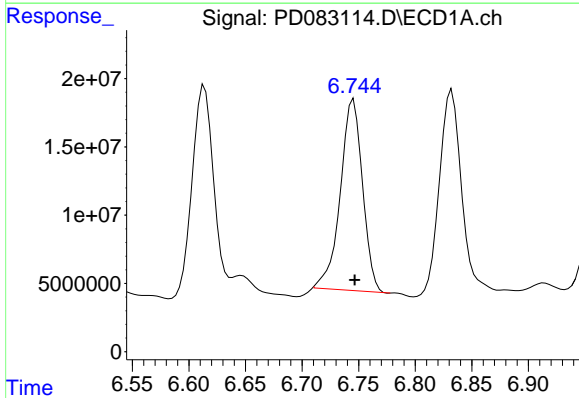
#15 Endosulfan II

R.T.: 6.832 min
Delta R.T.: -0.001 min
Response: 193874604
Conc: 100.64 ng/ml



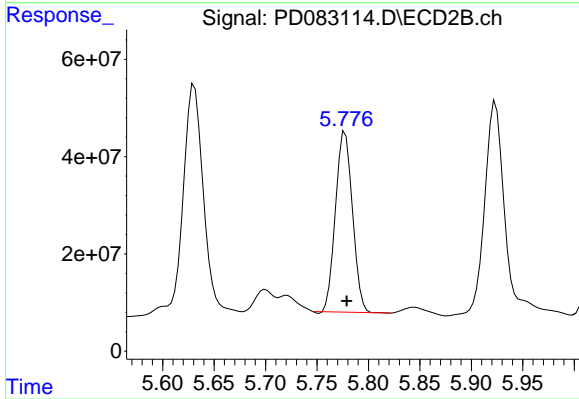
#15 Endosulfan II

R.T.: 5.924 min
Delta R.T.: -0.001 min
Response: 587241794
Conc: 139.35 ng/ml



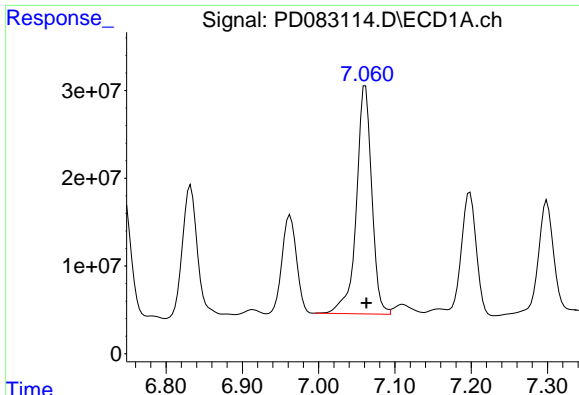
#16 4,4'-DDD

R.T.: 6.745 min
Delta R.T.: -0.001 min
Response: 191573495
Conc: 123.52 ng/ml



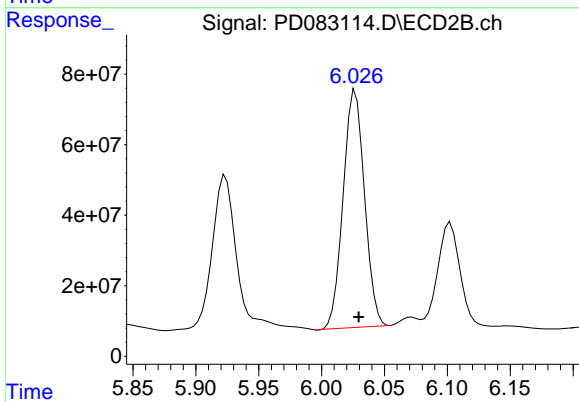
#16 4,4'-DDD

R.T.: 5.777 min
Delta R.T.: -0.002 min
Response: 426459717
Conc: 113.34 ng/ml



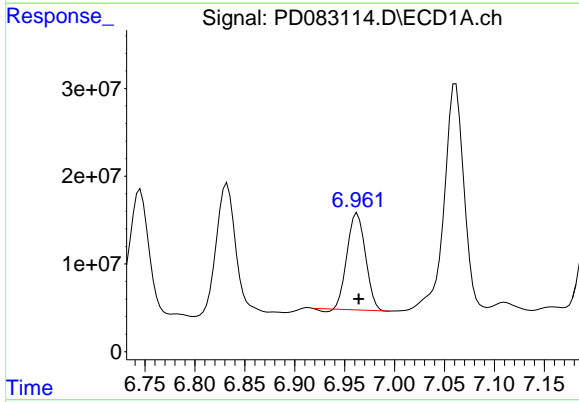
#17 4,4'-DDT

R.T.: 7.061 min
Delta R.T.: -0.001 min
Response: 363476592
Conc: 225.99 ng/ml



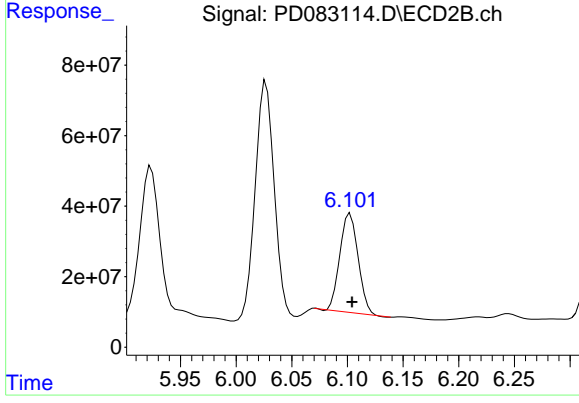
#17 4,4'-DDT

R.T.: 6.027 min
Delta R.T.: -0.003 min
Response: 795127116
Conc: 207.08 ng/ml



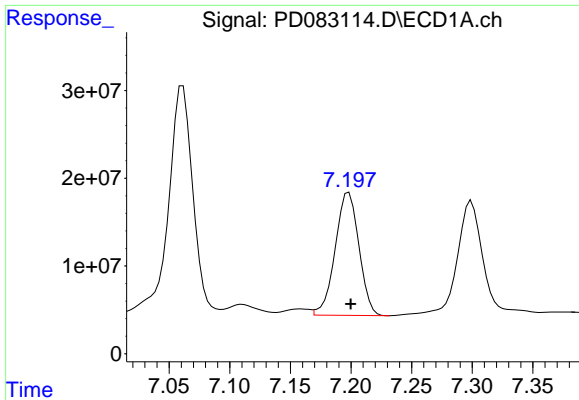
#18 Endrin aldehyde

R.T.: 6.963 min
Delta R.T.: -0.001 min
Response: 140041422
Conc: 100.81 ng/ml



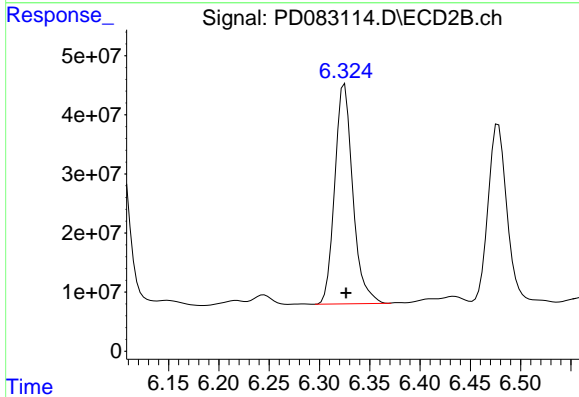
#18 Endrin aldehyde

R.T.: 6.103 min
Delta R.T.: -0.002 min
Response: 321520418
Conc: 101.95 ng/ml



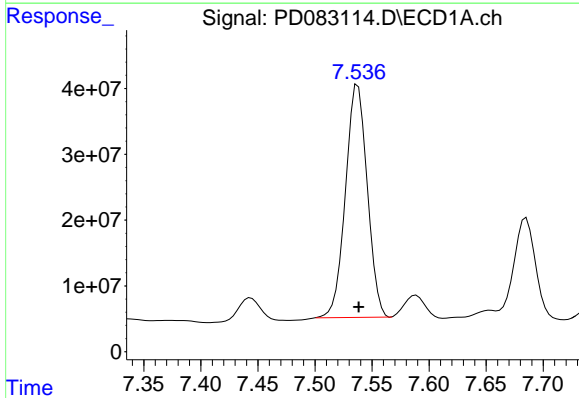
#19 Endosulfan Sulfate

R.T.: 7.198 min
Delta R.T.: -0.001 min
Response: 191220506
Conc: 108.34 ng/ml



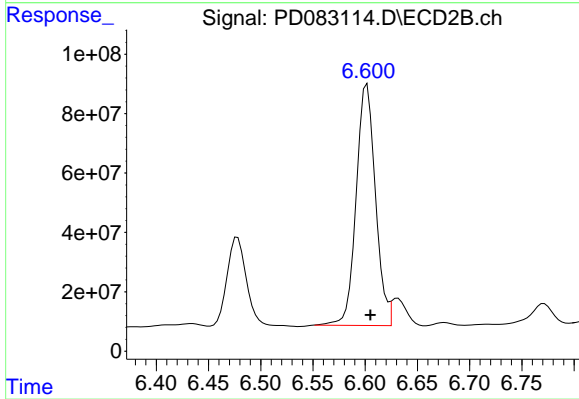
#19 Endosulfan Sulfate

R.T.: 6.325 min
Delta R.T.: -0.001 min
Response: 464268335
Conc: 115.48 ng/ml



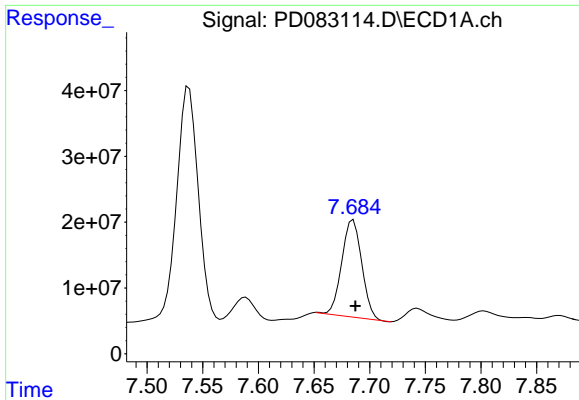
#20 Methoxychlor

R.T.: 7.538 min
Delta R.T.: 0.000 min
Response: 470520931
Conc: 543.90 ng/ml

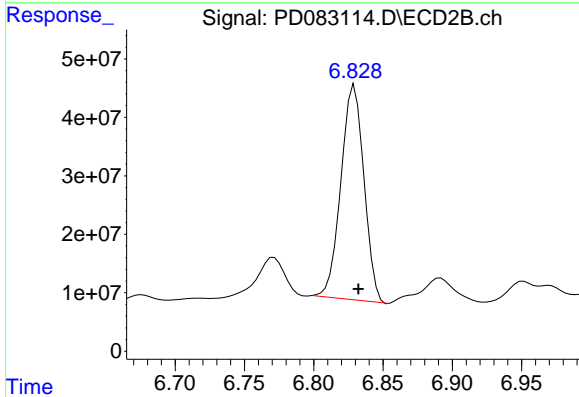


#20 Methoxychlor

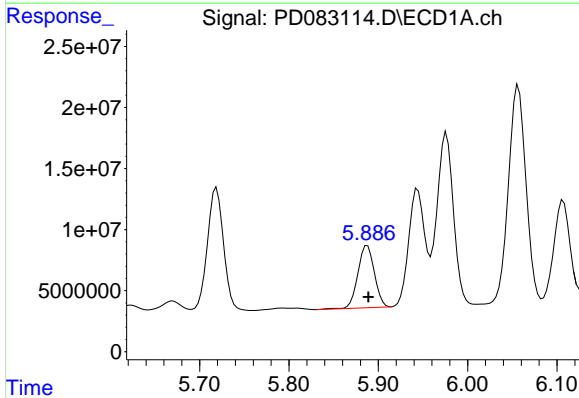
R.T.: 6.602 min
Delta R.T.: -0.003 min
Response: 1043445079
Conc: 531.76 ng/ml



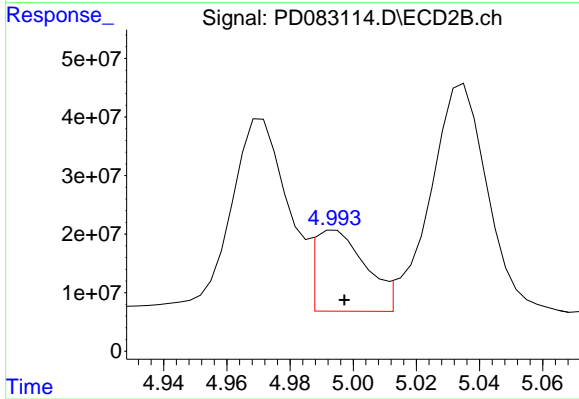
#21 Endrin ketone
 R.T.: 7.685 min
 Delta R.T.: -0.002 min
 Response: 184960638
 Conc: 98.11 ng/ml



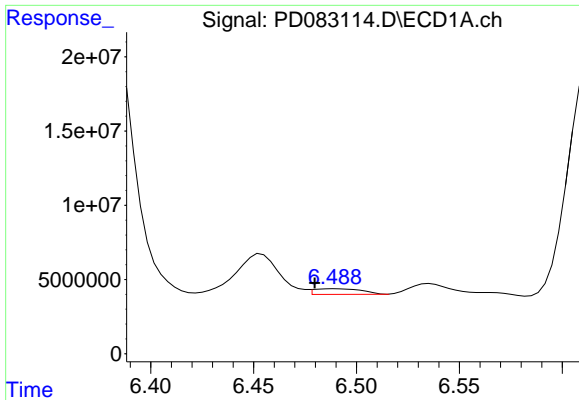
#21 Endrin ketone
 R.T.: 6.830 min
 Delta R.T.: -0.003 min
 Response: 424891685
 Conc: 94.48 ng/ml



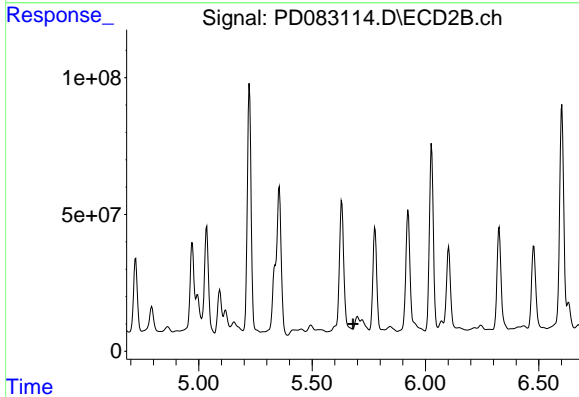
#22 Toxaphene-1
 R.T.: 5.888 min
 Delta R.T.: 0.000 min
 Response: 65329843
 Conc: 9644.05 ng/ml



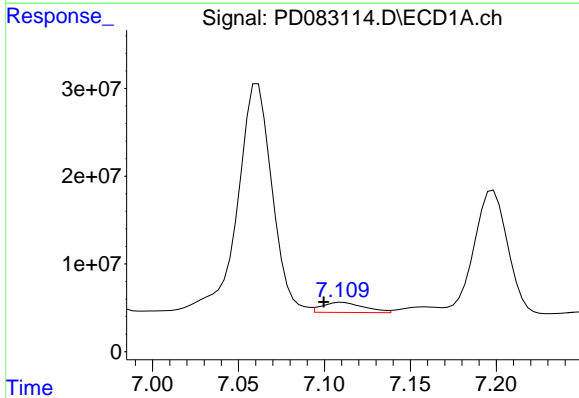
#22 Toxaphene-1
 R.T.: 4.994 min
 Delta R.T.: -0.003 min
 Response: 153655093
 Conc: 5803.53 ng/ml



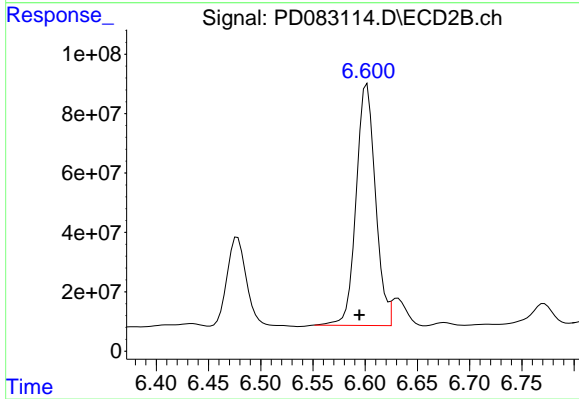
#23 Toxaphene-2
 R.T.: 6.490 min
 Delta R.T.: 0.010 min
 Response: 6138471
 Conc: 324.43 ng/ml



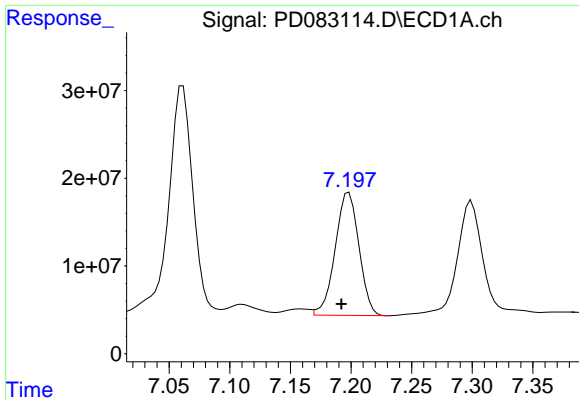
#23 Toxaphene-2
 R.T.: 5.721 min
 Delta R.T.: 0.041 min
 Response: -770111
 Conc: N.D.



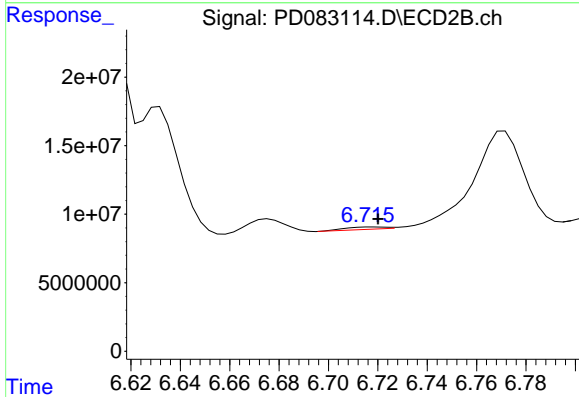
#24 Toxaphene-3
 R.T.: 7.110 min
 Delta R.T.: 0.011 min
 Response: 19402542
 Conc: 367.88 ng/ml



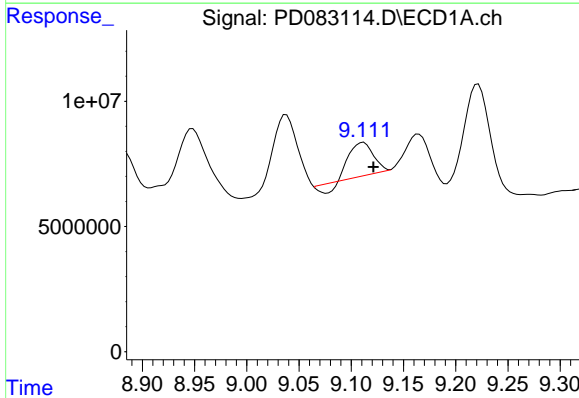
#24 Toxaphene-3
 R.T.: 6.602 min
 Delta R.T.: 0.007 min
 Response: 1043445079
 Conc: 11174.35 ng/ml



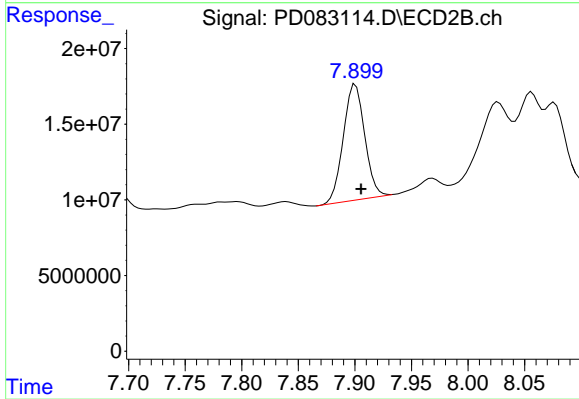
#25 Toxaphene-4
 R.T.: 7.198 min
 Delta R.T.: 0.006 min
 Response: 191220506
 Conc: 4899.29 ng/ml



#25 Toxaphene-4
 R.T.: 6.718 min
 Delta R.T.: -0.002 min
 Response: 1933064
 Conc: 15.15 ng/ml



#27 Decachlorobiphenyl
 R.T.: 9.112 min
 Delta R.T.: -0.009 min
 Response: 18260526
 Conc: 9.11 ng/ml



#27 Decachlorobiphenyl
 R.T.: 7.901 min
 Delta R.T.: -0.005 min
 Response: 100465946
 Conc: 25.39 ng/ml