

Data Path : Z:\pestpcbsrv\HPCHEM1\ECD\_D\Data\PD052724\  
 Data File : PD083094.D  
 Signal(s) : Signal #1: ECD1A.ch Signal #2: ECD2B.ch  
 Acq On : 26 May 2024 16:22  
 Operator : AR\AJ  
 Sample : P2548-03DL 6X  
 Misc :  
 ALS Vial : 4 Sample Multiplier: 1

**Instrument :**  
 ECD\_D  
**ClientSampleId :**  
 BH5Y0DL

**Manual Integrations**  
**APPROVED**  
 Reviewed By :Abdul Mirza 05/28/2024  
 Supervised By :Ankita Jodhani 05/28/2024

Integration File signal 1: autoint1.e  
 Integration File signal 2: autoint2.e  
 Quant Time: May 26 21:34:16 2024  
 Quant Method : Z:\pestpcbsrv\HPCHEM1\ECD\_D\Method\PD051924CLP.M  
 Quant Title : GC Extractables  
 QLast Update : Fri May 17 05:17:58 2024  
 Response via : Initial Calibration  
 Integrator: ChemStation

Volume Inj. : 1 µl  
 Signal #1 Phase : ZB-MR1 Signal #2 Phase: ZB-MR2  
 Signal #1 Info : 30M x 0.32mm x0.5 Signal #2 Info : 30M x 0.32mm x 0.25µm

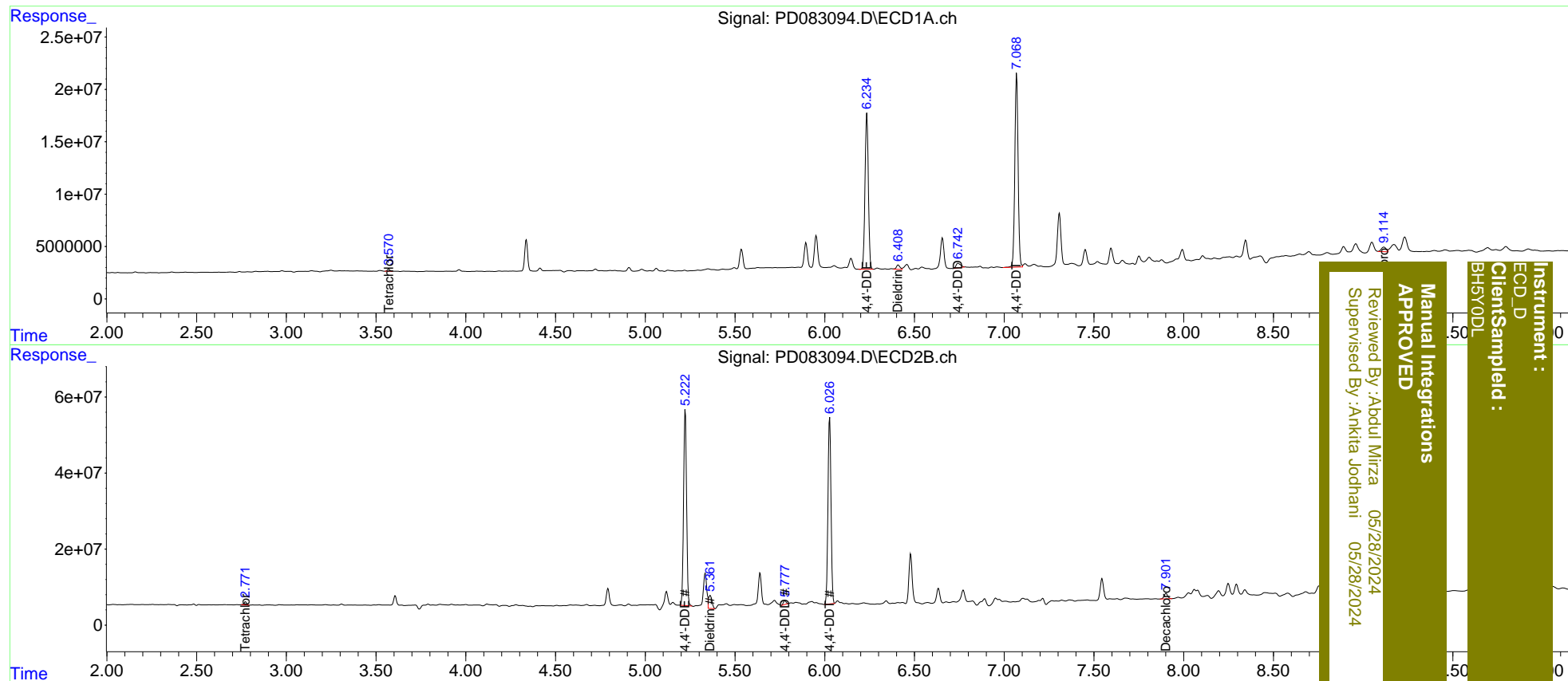
Compound	RT#1	RT#2	Resp#1	Resp#2	ng/ml	ng/ml
-----						
System Monitoring Compounds						
1) SA Tetrachlo...	3.570	2.772	1927055	8390568	1.288m	2.158 #
27) SA Decachlor...	9.114	7.902	8705703	19807367	4.343m	5.006
Target Compounds						
12) B 4,4'-DDE	6.235	5.223	192.8E6	593.4E6	88.422	124.431 #
13) MA Dieldrin	6.409	5.361	5643525	44413446	2.568	8.888m#
16) A 4,4'-DDD	6.742	5.777	7794859	10546316	5.026m	2.803m#
17) MA 4,4'-DDT	7.069	6.027	233.2E6	577.9E6	145.003	150.504
-----						

(f)=RT Delta > 1/2 Window (#)=Amounts differ by > 25% (m)=manual int.

Data Path : Z:\pestpcbsrv\HPCHEM1\ECD\_D\Data\PD052724\  
 Data File : PD083094.D  
 Signal(s) : Signal #1: ECD1A.ch Signal #2: ECD2B.ch  
 Acq On : 26 May 2024 16:22  
 Operator : AR\AJ  
 Sample : P2548-03DL 6X  
 Misc :  
 ALS Vial : 4 Sample Multiplier: 1

Integration File signal 1: autoint1.e  
 Integration File signal 2: autoint2.e  
 Quant Time: May 26 21:34:16 2024  
 Quant Method : Z:\pestpcbsrv\HPCHEM1\ECD\_D\Method\PD051924CLP.M  
 Quant Title : GC Extractables  
 QLast Update : Fri May 17 05:17:58 2024  
 Response via : Initial Calibration  
 Integrator: ChemStation

Volume Inj. : 1 µl  
 Signal #1 Phase : ZB-MR1 Signal #2 Phase: ZB-MR2  
 Signal #1 Info : 30M x 0.32mm x0.5 Signal #2 Info : 30M x 0.32mm x 0.25µm



Instrument : ECD\_D  
 Client Sampled : BHSY0DL  
 Manual Integrations APPROVED  
 Reviewed By : Abdul Mirza 05/28/2024  
 Supervised By : Ankita Jodhani 05/28/2024