

Data Path : Z:\pestpcbsrv\HPCHEM1\ECD_D\Data\PD052824\
 Data File : PD083176.D
 Signal(s) : Signal #1: ECD1A.ch Signal #2: ECD2B.ch
 Acq On : 28 May 2024 18:40
 Operator : AR\AJ
 Sample : P2569-19DL 2X
 Misc :
 ALS Vial : 12 Sample Multiplier: 1

Instrument :

ECD_D

ClientSampleId :

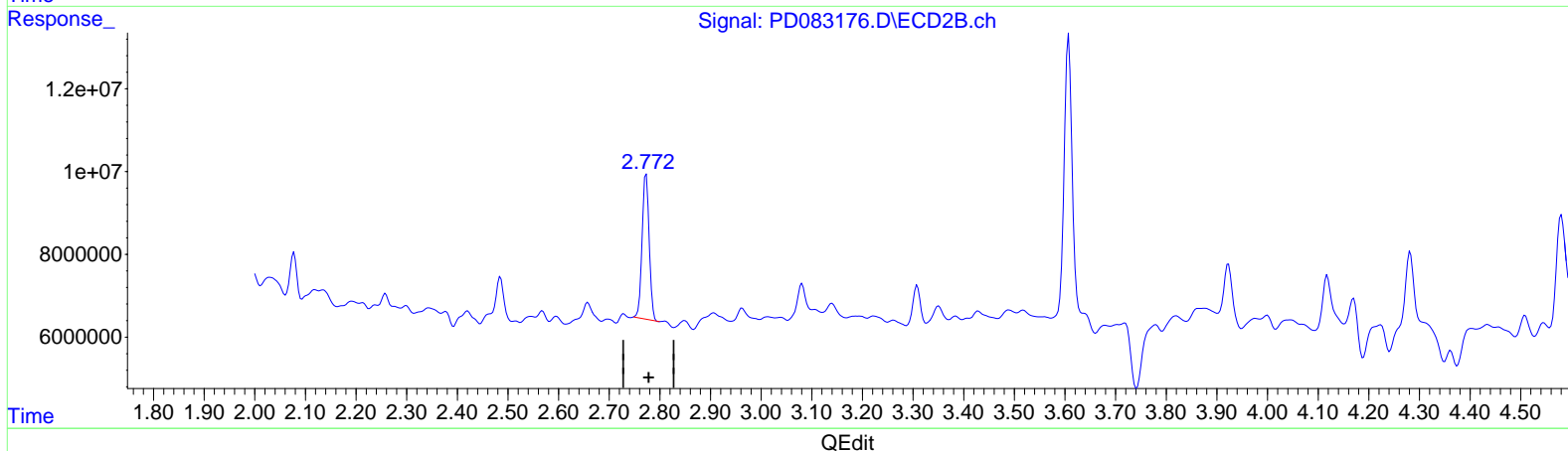
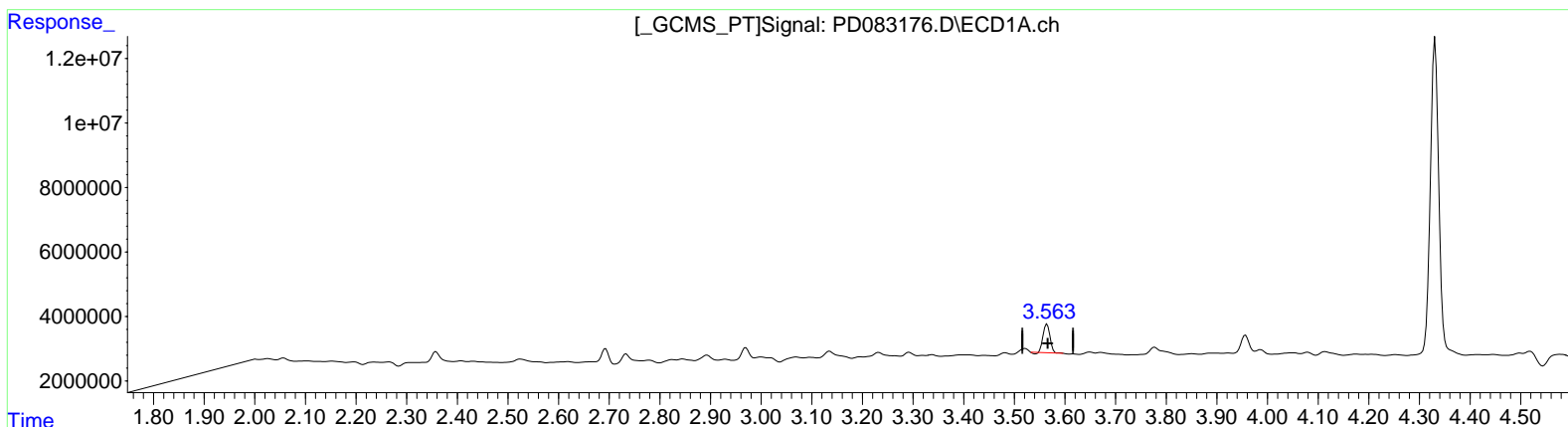
BH6A5DL

Manual IntegrationsAPPROVED

Reviewed By :Abdul Mirza 06/03/2024
 Supervised By :Ankita Jodhani 06/03/2024

Integration File signal 1: autoint1.e
 Integration File signal 2: autoint2.e
 Quant Time: Jun 06 07:05:46 2024
 Quant Method : Z:\pestpcbsrv\HPCHEM1\ECD_D\Method\PD051924CLP.M
 Quant Title : GC Extractables
 QLast Update : Fri May 17 05:17:58 2024
 Response via : Initial Calibration
 Integrator: ChemStation

Volume Inj. : 1 µl
 Signal #1 Phase : ZB-MR1 Signal #2 Phase: ZB-MR2
 Signal #1 Info : 30M x 0.32mm x0.5 Signal #2 Info : 30M x 0.32mm x 0.25µm



(1) Tetrachloro-m-xylene (SA)

3.565min 5.526 ng/ml
 response 8265330

(1) Tetrachloro-m-xylene #2 (SA)

2.773min 8.755 ng/ml
 response 34044578

Data Path : Z:\pestpcbsrv\HPCHEM1\ECD_D\Data\PD052824\
 Data File : PD083176.D
 Signal(s) : Signal #1: ECD1A.ch Signal #2: ECD2B.ch
 Acq On : 28 May 2024 18:40
 Operator : AR\AJ
 Sample : P2569-19DL 2X
 Misc :
 ALS Vial : 12 Sample Multiplier: 1

Instrument :

ECD_D

ClientSampleId :

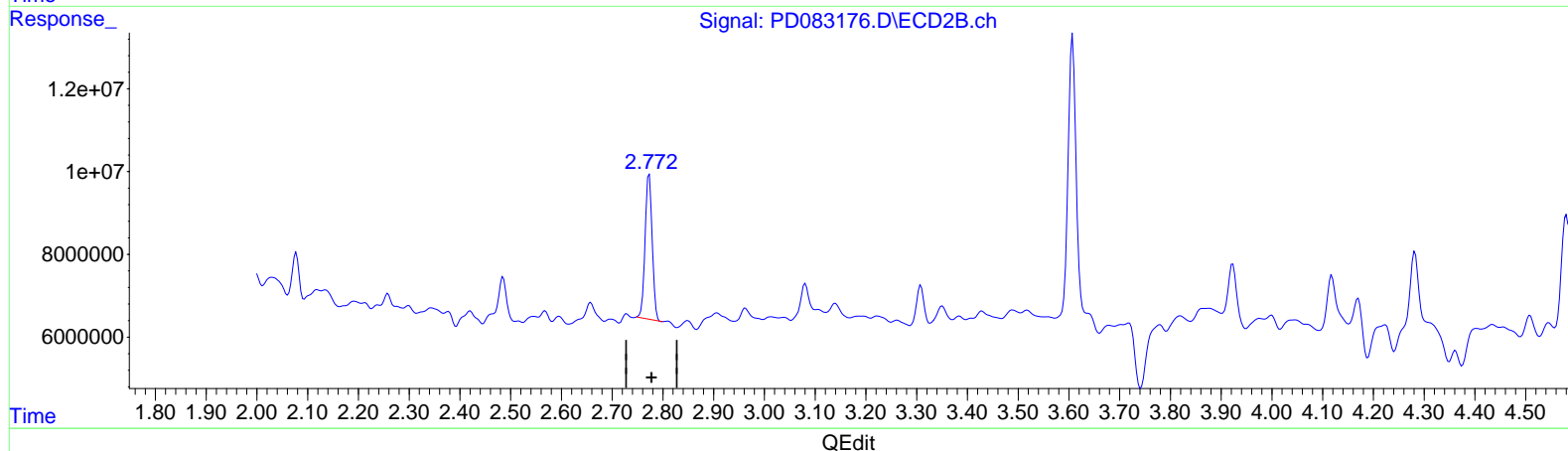
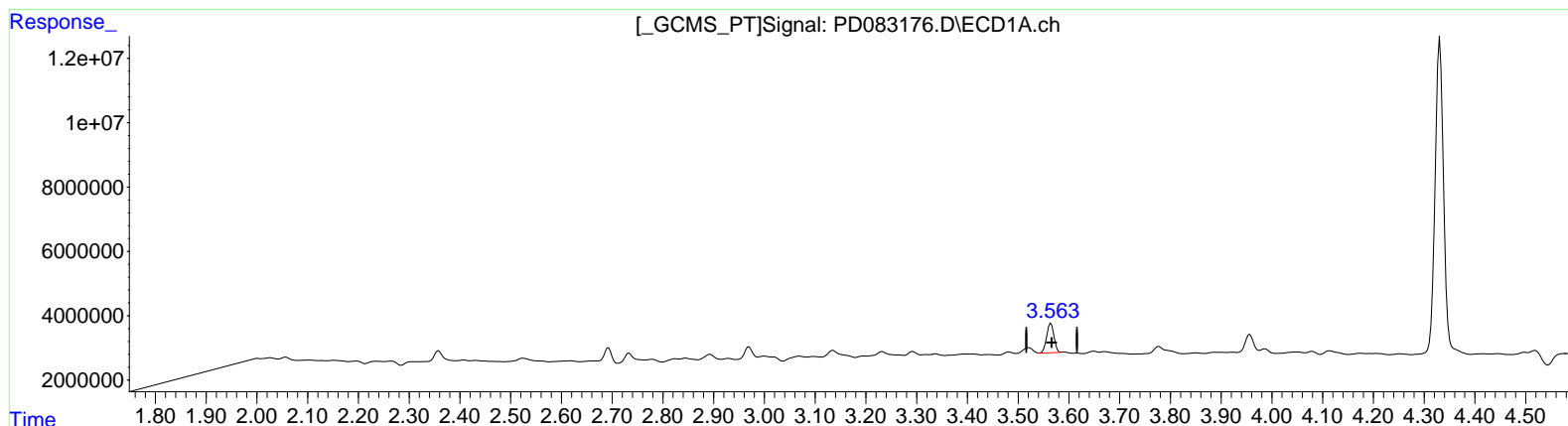
BH6A5DL

Manual IntegrationsAPPROVED

Reviewed By :Abdul Mirza 06/03/2024
 Supervised By :Ankita Jodhani 06/03/2024

Integration File signal 1: autoint1.e
 Integration File signal 2: autoint2.e
 Quant Time: May 28 21:31:35 2024
 Quant Method : Z:\pestpcbsrv\HPCHEM1\ECD_D\Method\PD051924CLP.M
 Quant Title : GC Extractables
 QLast Update : Fri May 17 05:17:58 2024
 Response via : Initial Calibration
 Integrator: ChemStation

Volume Inj. : 1 µl
 Signal #1 Phase : ZB-MR1 Signal #2 Phase: ZB-MR2
 Signal #1 Info : 30M x 0.32mm x0.5 Signal #2 Info : 30M x 0.32mm x 0.25µm



(1) Tetrachloro-m-xylene (SA)

3.563min 6.173 ng/ml m
 response 9233006

(1) Tetrachloro-m-xylene #2 (SA)

2.773min 8.755 ng/ml
 response 34044578

Data Path : Z:\pestpcbsrv\HPCHEM1\ECD_D\Data\PD052824\
 Data File : PD083176.D
 Signal(s) : Signal #1: ECD1A.ch Signal #2: ECD2B.ch
 Acq On : 28 May 2024 18:40
 Operator : AR\AJ
 Sample : P2569-19DL 2X
 Misc :
 ALS Vial : 12 Sample Multiplier: 1

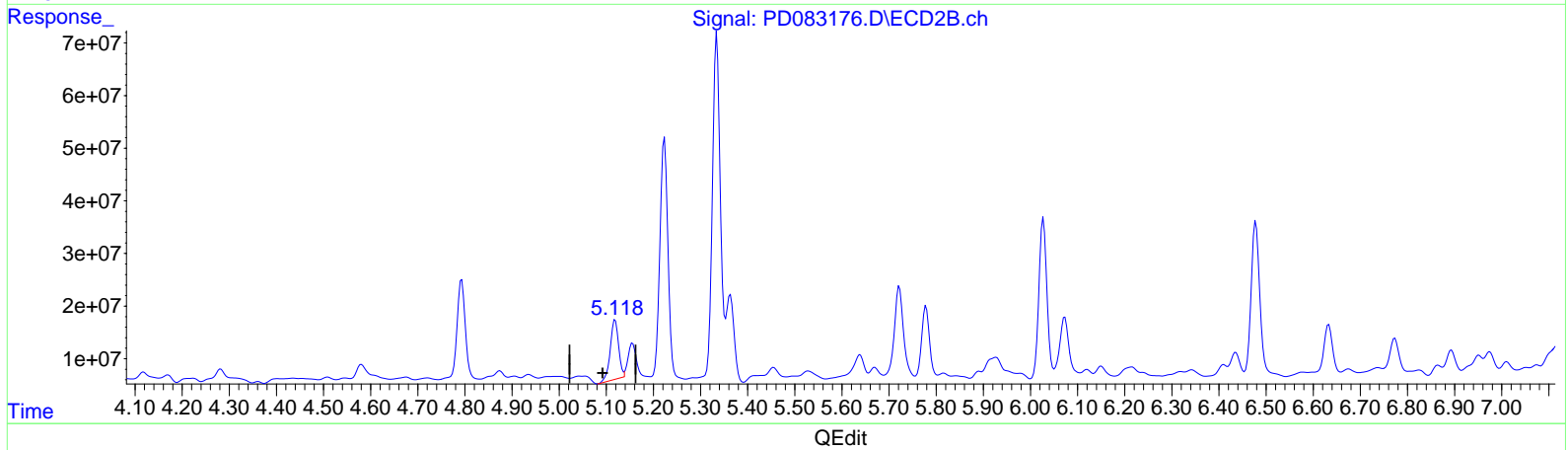
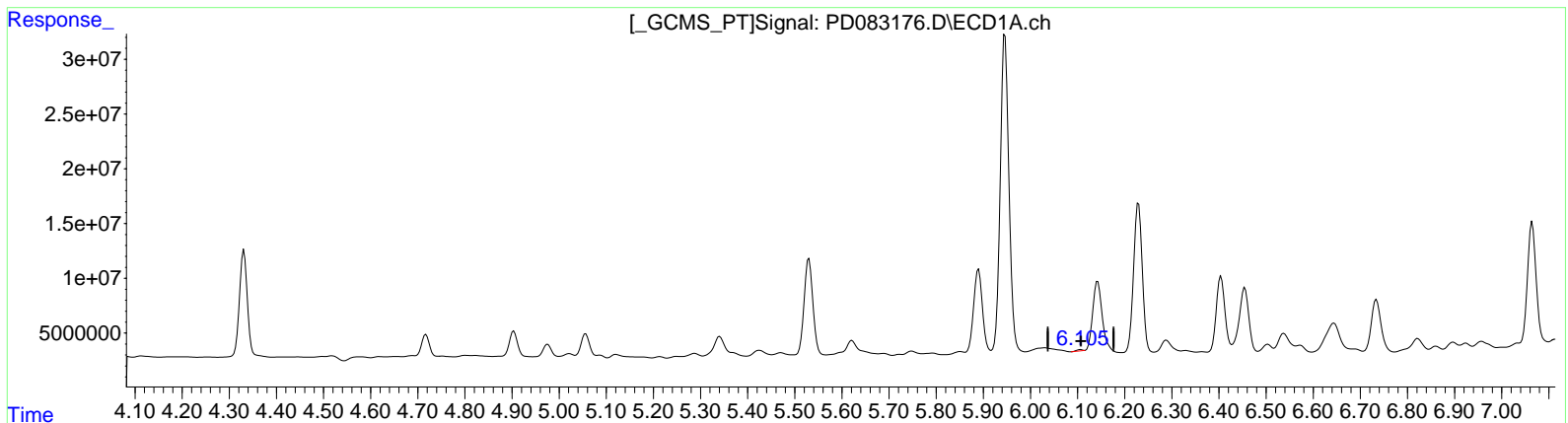
Instrument :
 ECD_D
ClientSampleId :
 BH6A5DL

Manual IntegrationsAPPROVED

Reviewed By :Abdul Mirza 06/03/2024
 Supervised By :Ankita Jodhani 06/03/2024

Integration File signal 1: autoint1.e
 Integration File signal 2: autoint2.e
 Quant Time: Jun 06 04:55:01 2024
 Quant Method : Z:\pestpcbsrv\HPCHEM1\ECD_D\Method\PD051924CLP.M
 Quant Title : GC Extractables
 QLast Update : Fri May 17 05:17:58 2024
 Response via : Initial Calibration
 Integrator: ChemStation

Volume Inj. : 1 µl
 Signal #1 Phase : ZB-MR1 Signal #2 Phase: ZB-MR2
 Signal #1 Info : 30M x 0.32mm x0.5 Signal #2 Info : 30M x 0.32mm x 0.25µm



(9) Endosulfan I (A)
 6.106min 0.471 ng/ml
 response 979615

(9) Endosulfan I #2 (A)
 5.119min 30.850 ng/ml
 response 139129088

Data Path : Z:\pestpcbsrv\HPCHEM1\ECD_D\Data\PD052824\
 Data File : PD083176.D
 Signal(s) : Signal #1: ECD1A.ch Signal #2: ECD2B.ch
 Acq On : 28 May 2024 18:40
 Operator : AR\AJ
 Sample : P2569-19DL 2X
 Misc :
 ALS Vial : 12 Sample Multiplier: 1

Instrument :

ECD_D

ClientSampleId :

BH6A5DL

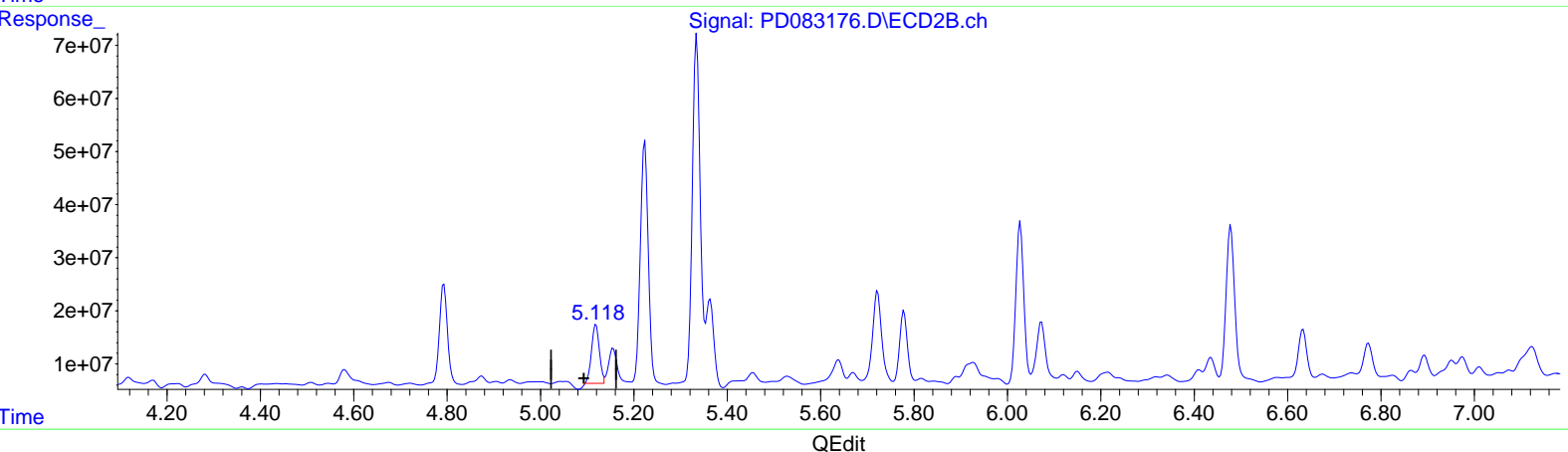
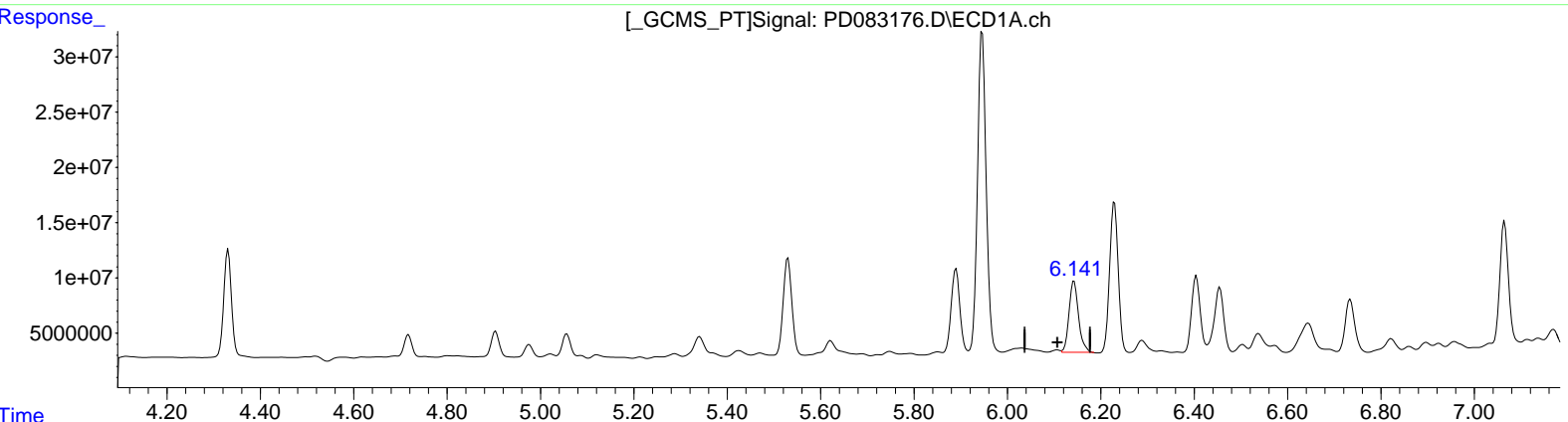
Manual IntegrationsAPPROVED

Reviewed By :Abdul Mirza 06/03/2024

Supervised By :Ankita Jodhani 06/03/2024

Integration File signal 1: autoint1.e
 Integration File signal 2: autoint2.e
 Quant Time: May 28 21:31:35 2024
 Quant Method : Z:\pestpcbsrv\HPCHEM1\ECD_D\Method\PD051924CLP.M
 Quant Title : GC Extractables
 QLast Update : Fri May 17 05:17:58 2024
 Response via : Initial Calibration
 Integrator: ChemStation

Volume Inj. : 1 µl
 Signal #1 Phase : ZB-MR1 Signal #2 Phase: ZB-MR2
 Signal #1 Info : 30M x 0.32mm x0.5 Signal #2 Info : 30M x 0.32mm x 0.25µm



- (9) Endosulfan I (A)
 6.141min 43.975 ng/ml m
 response 91506158
- (9) Endosulfan I #2 (A)
 5.118min 28.466 ng/ml m
 response 128380639

Data Path : Z:\pestpcbsrv\HPCHEM1\ECD_D\Data\PD052824\
 Data File : PD083176.D
 Signal(s) : Signal #1: ECD1A.ch Signal #2: ECD2B.ch
 Acq On : 28 May 2024 18:40
 Operator : ARVAJ
 Sample : P2569-19DL 2X
 Misc :
 ALS Vial : 12 Sample Multiplier: 1

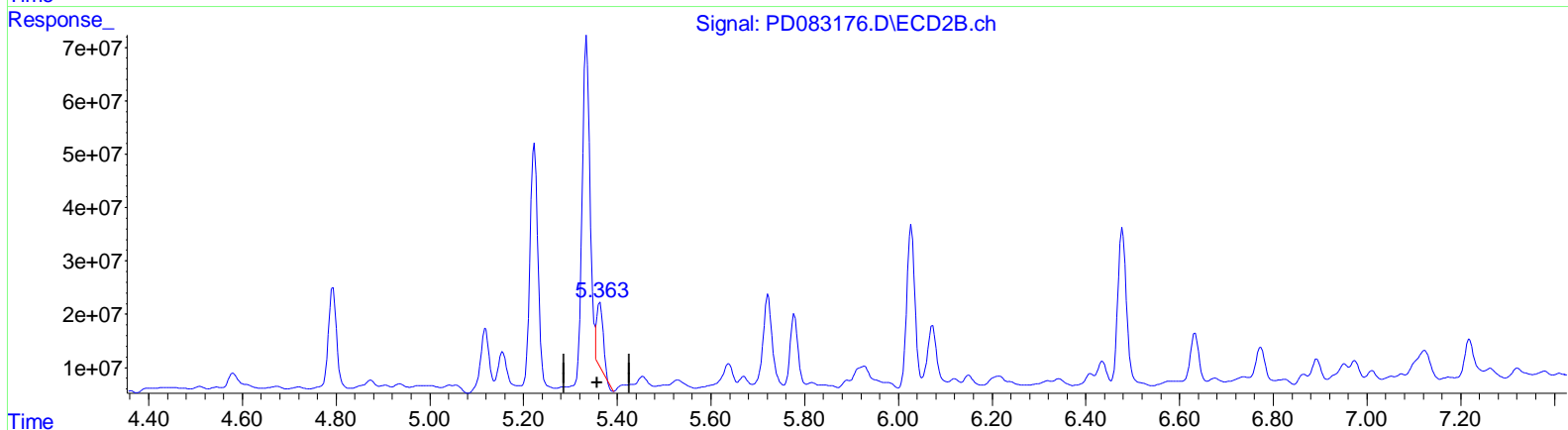
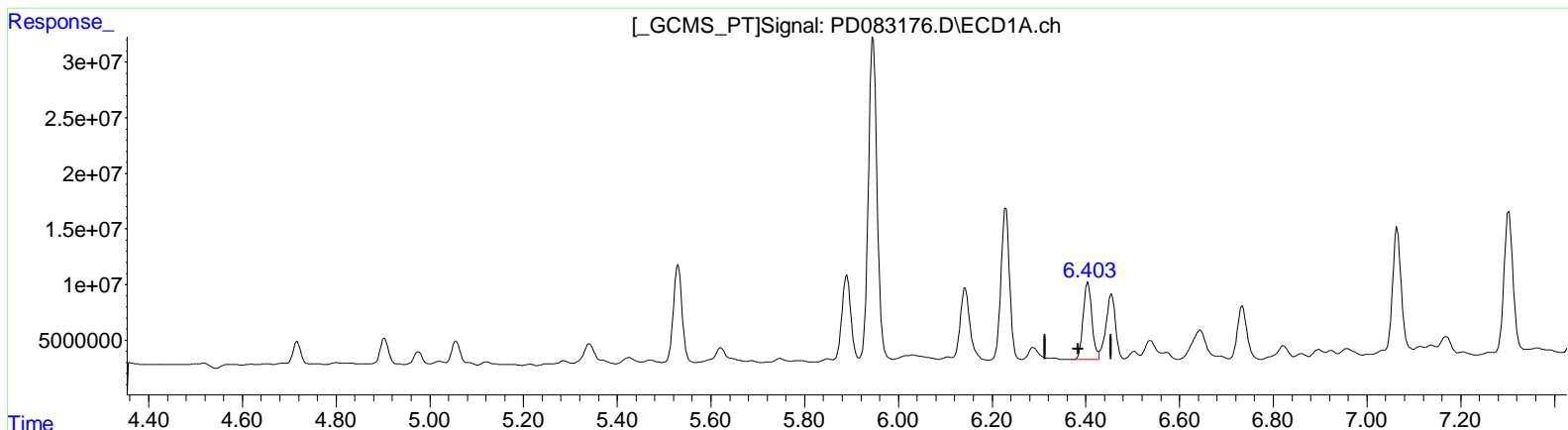
Instrument :
 ECD_D
ClientSampleId :
 BH6A5DL

Manual Integrations APPROVED

Reviewed By : Abdul Mirza 06/03/2024
 Supervised By : Ankita Jodhani 06/03/2024

Integration File signal 1: autoint1.e
 Integration File signal 2: autoint2.e
 Quant Time: May 28 21:31:35 2024
 Quant Method : Z:\pestpcbsrv\HPCHEM1\ECD_D\Method\PD051924CLP.M
 Quant Title : GC Extractables
 QLast Update : Fri May 17 05:17:58 2024
 Response via : Initial Calibration
 Integrator: ChemStation

Volume Inj. : 1 µl
 Signal #1 Phase : ZB-MR1 Signal #2 Phase: ZB-MR2
 Signal #1 Info : 30M x 0.32mm x 0.5 Signal #2 Info : 30M x 0.32mm x 0.25µm



QEdit

(13) Dieldrin (MA)
 6.405min 40.620 ng/ml
 response 89276402

(13) Dieldrin #2 (MA)
 5.363min 23.674 ng/ml
 response 118299962

Data Path : Z:\pestpcbsrv\HPCHEM1\ECD_D\Data\PD052824\
 Data File : PD083176.D
 Signal(s) : Signal #1: ECD1A.ch Signal #2: ECD2B.ch
 Acq On : 28 May 2024 18:40
 Operator : ARVAJ
 Sample : P2569-19DL 2X
 Misc :
 ALS Vial : 12 Sample Multiplier: 1

Instrument :

ECD_D

ClientSampleId :

BH6A5DL

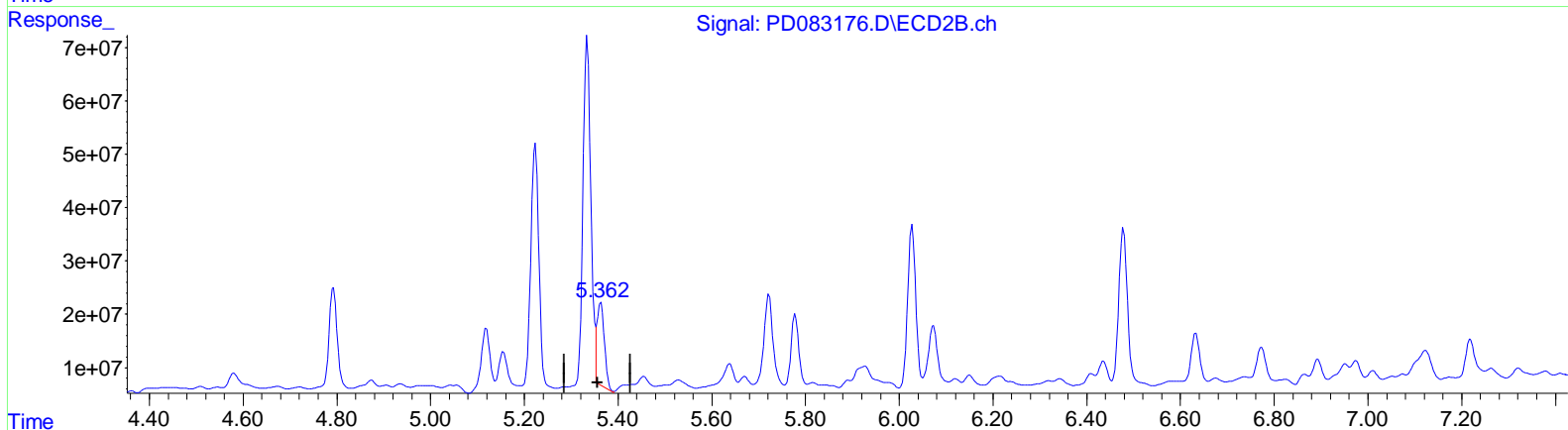
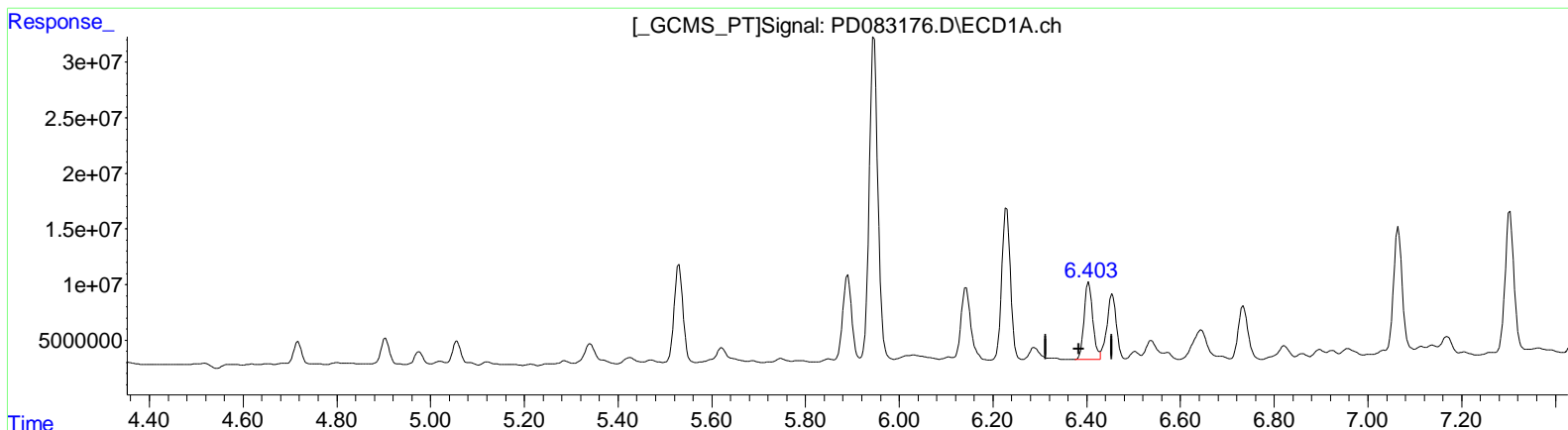
Manual Integrations APPROVED

Reviewed By : Abdul Mirza 06/03/2024

Supervised By : Ankita Jodhani 06/03/2024

Integration File signal 1: autoint1.e
 Integration File signal 2: autoint2.e
 Quant Time: May 28 21:31:35 2024
 Quant Method : Z:\pestpcbsrv\HPCHEM1\ECD_D\Method\PD051924CLP.M
 Quant Title : GC Extractables
 QLast Update : Fri May 17 05:17:58 2024
 Response via : Initial Calibration
 Integrator: ChemStation

Volume Inj. : 1 µl
 Signal #1 Phase : ZB-MR1 Signal #2 Phase: ZB-MR2
 Signal #1 Info : 30M x 0.32mm x 0.5 Signal #2 Info : 30M x 0.32mm x 0.25µm



QEdit

(13) Dieldrin (MA)
 6.405min 40.620 ng/ml
 response 89276402

(13) Dieldrin #2 (MA)
 5.362min 34.234 ng/ml m
 response 171068429

Data Path : Z:\pestpcbsrv\HPCHEM1\ECD_D\Data\PD052824\
 Data File : PD083176.D
 Signal(s) : Signal #1: ECD1A.ch Signal #2: ECD2B.ch
 Acq On : 28 May 2024 18:40
 Operator : ARVAJ
 Sample : P2569-19DL 2X
 Misc :
 ALS Vial : 12 Sample Multiplier: 1

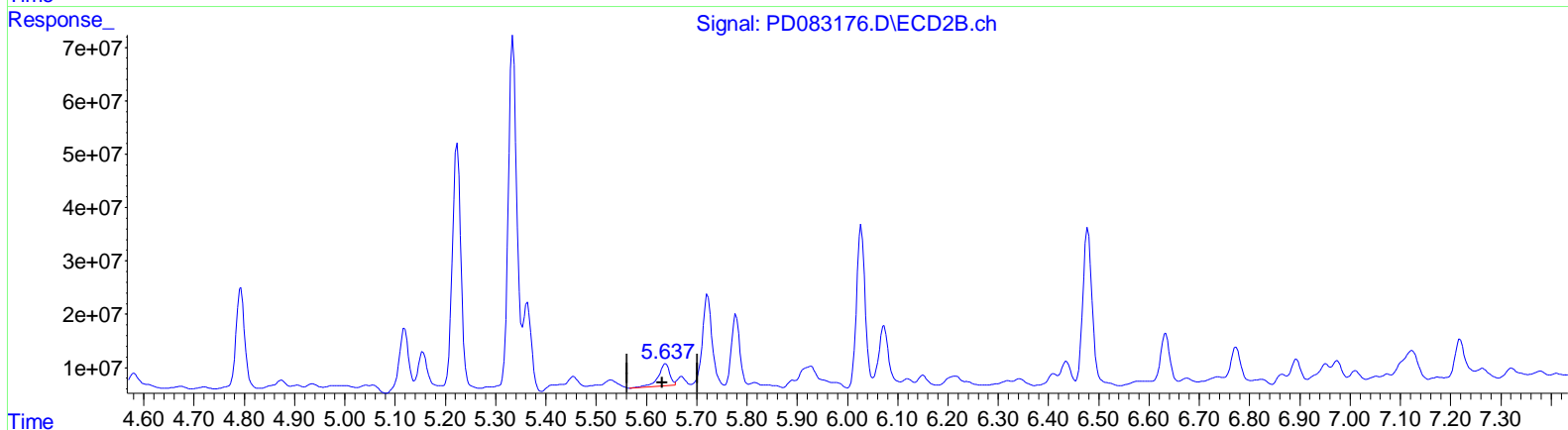
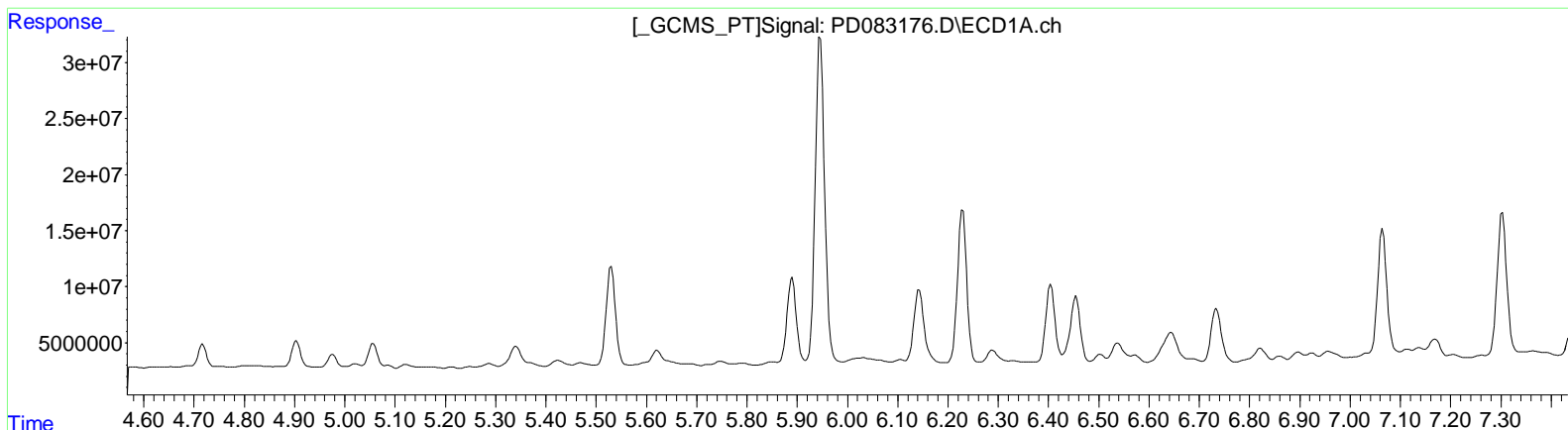
Instrument :
 ECD_D
ClientSampleId :
 BH6A5DL

Manual Integrations APPROVED

Reviewed By : Abdul Mirza 06/03/2024
 Supervised By : Ankita Jodhani 06/03/2024

Integration File signal 1: autoint1.e
 Integration File signal 2: autoint2.e
 Quant Time: May 28 21:31:35 2024
 Quant Method : Z:\pestpcbsrv\HPCHEM1\ECD_D\Method\PD051924CLP.M
 Quant Title : GC Extractables
 QLast Update : Fri May 17 05:17:58 2024
 Response via : Initial Calibration
 Integrator: ChemStation

Volume Inj. : 1 µl
 Signal #1 Phase : ZB-MR1 Signal #2 Phase: ZB-MR2
 Signal #1 Info : 30M x 0.32mm x 0.5 Signal #2 Info : 30M x 0.32mm x 0.25µm



QEdit

(14) Endrin (MA)
 0.000min 0.000 ng/ml
 response 0

(14) Endrin #2 (MA)
 5.639min 15.235 ng/ml
 response 66631129

Data Path : Z:\pestpcbsrv\HPCHEM1\ECD_D\Data\PD052824\
 Data File : PD083176.D
 Signal(s) : Signal #1: ECD1A.ch Signal #2: ECD2B.ch
 Acq On : 28 May 2024 18:40
 Operator : ARVAJ
 Sample : P2569-19DL 2X
 Misc :
 ALS Vial : 12 Sample Multiplier: 1

Instrument :

ECD_D

ClientSampleId :

BH6A5DL

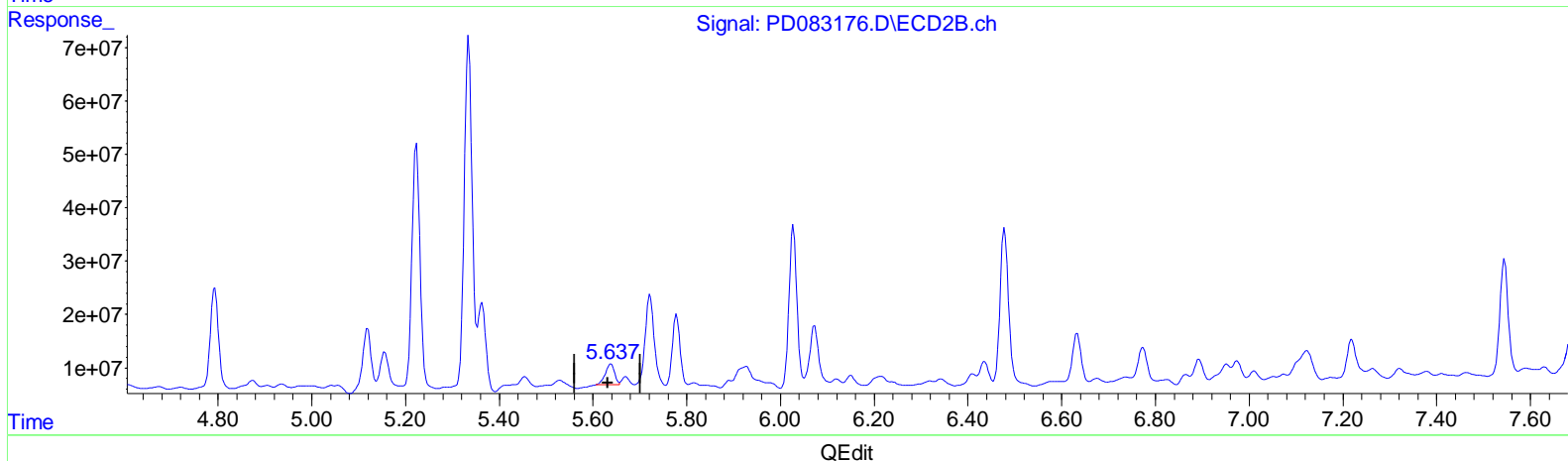
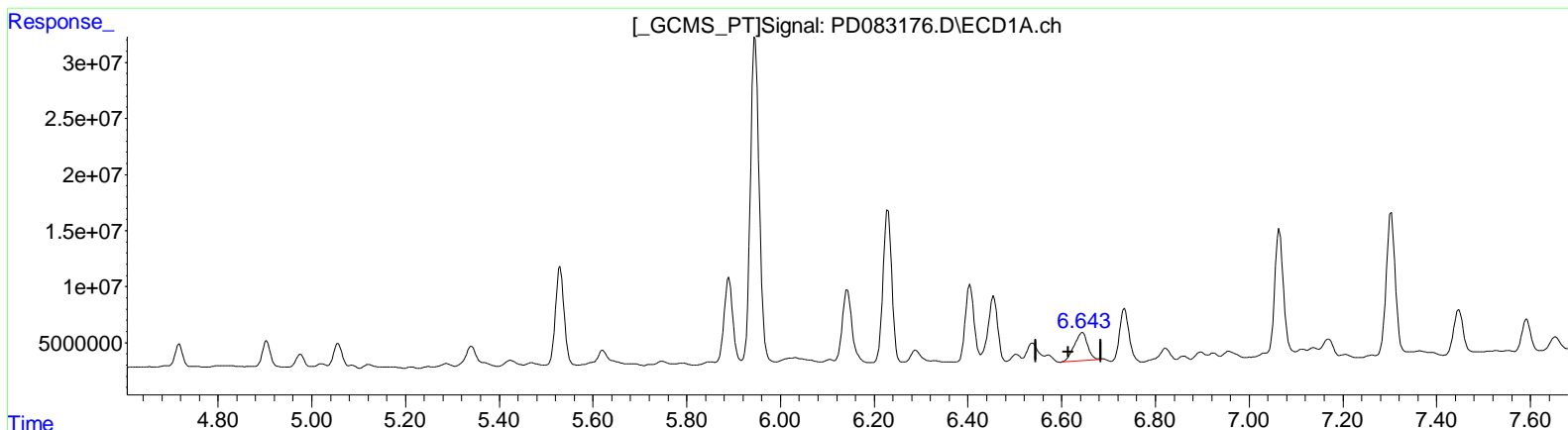
Manual Integrations APPROVED

Reviewed By : Abdul Mirza 06/03/2024

Supervised By : Ankita Jodhani 06/03/2024

Integration File signal 1: autoint1.e
 Integration File signal 2: autoint2.e
 Quant Time: May 28 21:31:35 2024
 Quant Method : Z:\pestpcbsrv\HPCHEM1\ECD_D\Method\PD051924CLP.M
 Quant Title : GC Extractables
 QLast Update : Fri May 17 05:17:58 2024
 Response via : Initial Calibration
 Integrator: ChemStation

Volume Inj. : 1 µl
 Signal #1 Phase : ZB-MR1 Signal #2 Phase: ZB-MR2
 Signal #1 Info : 30M x 0.32mm x 0.5 Signal #2 Info : 30M x 0.32mm x 0.25µm



(14) Endrin (MA)
 6.643min 28.067 ng/ml m
 response 50049090

(14) Endrin #2 (MA)
 5.637min 11.911 ng/ml m
 response 52096042

Data Path : Z:\pestpcbsrv\HPCHEM1\ECD_D\Data\PD052824\
 Data File : PD083176.D
 Signal(s) : Signal #1: ECD1A.ch Signal #2: ECD2B.ch
 Acq On : 28 May 2024 18:40
 Operator : ARVAJ
 Sample : P2569-19DL 2X
 Misc :
 ALS Vial : 12 Sample Multiplier: 1

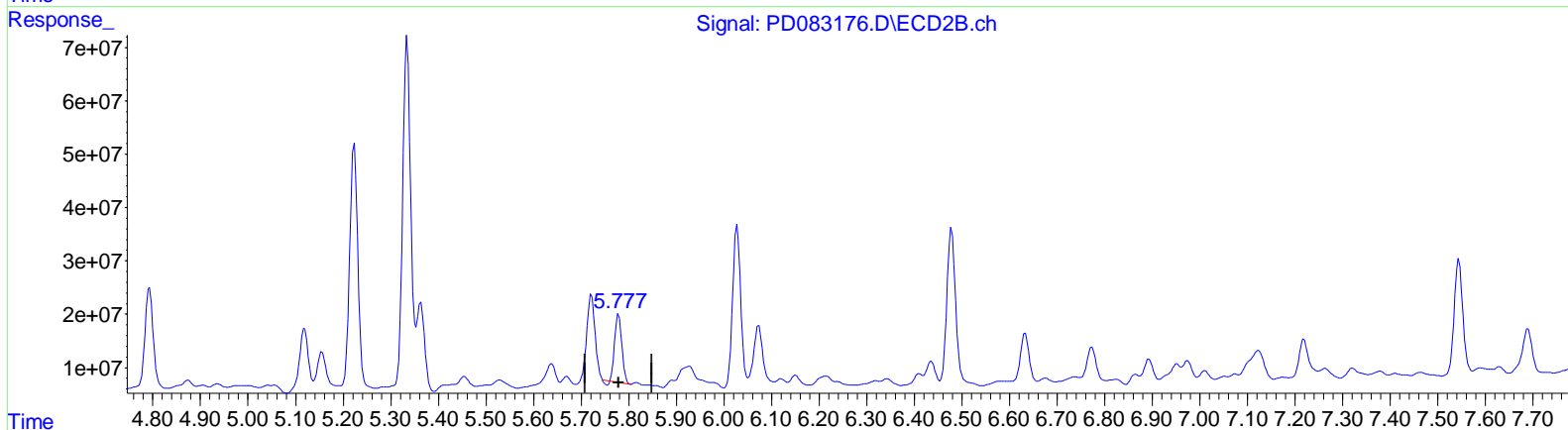
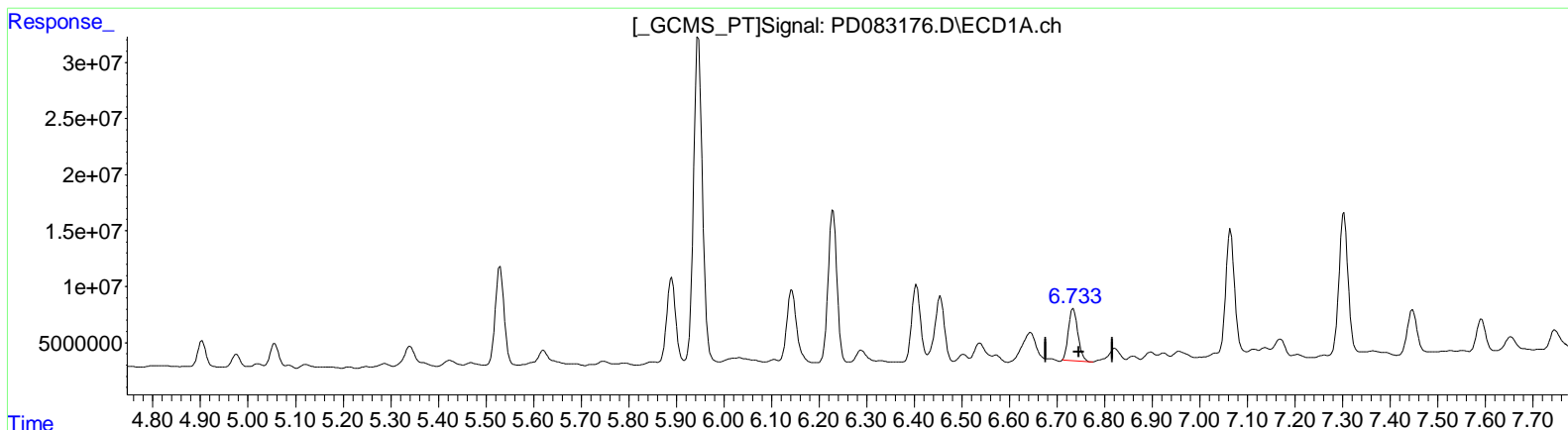
Instrument :
 ECD_D
ClientSampleId :
 BH6A5DL

Manual Integrations APPROVED

Reviewed By : Abdul Mirza 06/03/2024
 Supervised By : Ankita Jodhani 06/03/2024

Integration File signal 1: autoint1.e
 Integration File signal 2: autoint2.e
 Quant Time: May 28 21:31:35 2024
 Quant Method : Z:\pestpcbsrv\HPCHEM1\ECD_D\Method\PD051924CLP.M
 Quant Title : GC Extractables
 QLast Update : Fri May 17 05:17:58 2024
 Response via : Initial Calibration
 Integrator: ChemStation

Volume Inj. : 1 µl
 Signal #1 Phase : ZB-MR1 Signal #2 Phase: ZB-MR2
 Signal #1 Info : 30M x 0.32mm x 0.5 Signal #2 Info : 30M x 0.32mm x 0.25µm



QEdit

(16) 4,4'-DDD (A)
 6.734min 41.404 ng/ml
 response 64213913

(16) 4,4'-DDD #2 (A)
 5.778min 34.480 ng/ml
 response 129739128

Data Path : Z:\pestpcbsrv\HPCHEM1\ECD_D\Data\PD052824\
 Data File : PD083176.D
 Signal(s) : Signal #1: ECD1A.ch Signal #2: ECD2B.ch
 Acq On : 28 May 2024 18:40
 Operator : ARVAJ
 Sample : P2569-19DL 2X
 Misc :
 ALS Vial : 12 Sample Multiplier: 1

Instrument :

ECD_D

ClientSampleId :

BH6A5DL

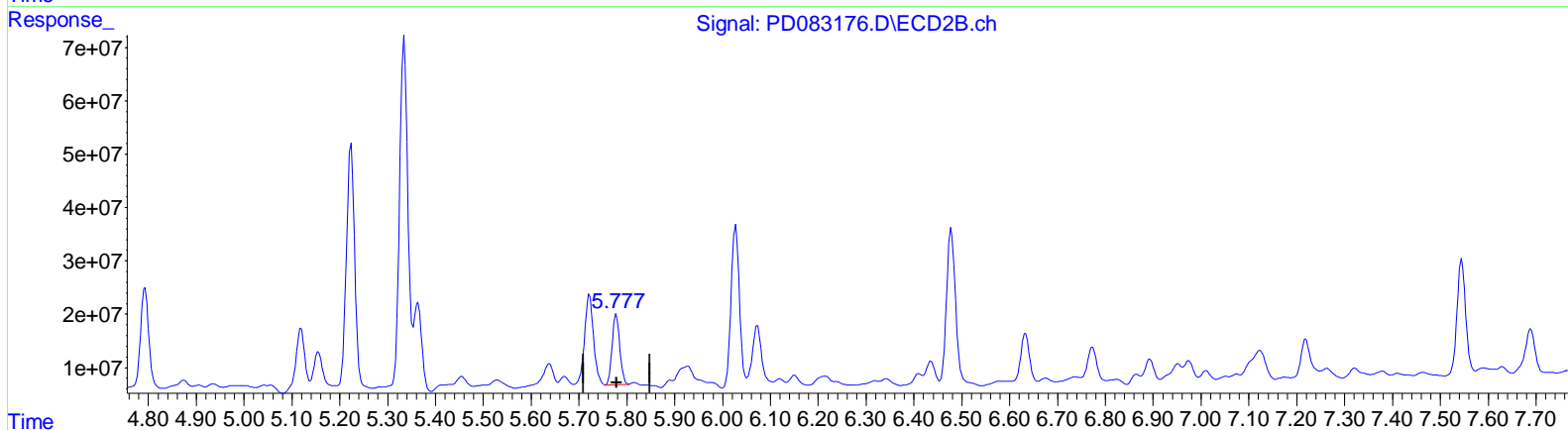
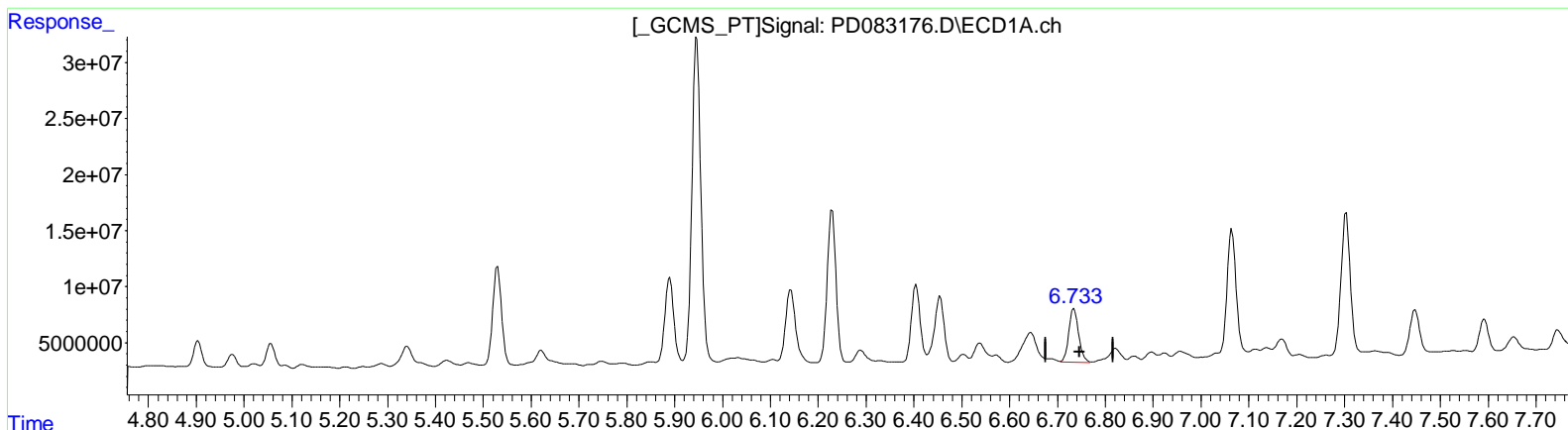
Manual Integrations APPROVED

Reviewed By : Abdul Mirza 06/03/2024

Supervised By : Ankita Jodhani 06/03/2024

Integration File signal 1: autoint1.e
 Integration File signal 2: autoint2.e
 Quant Time: May 28 21:31:35 2024
 Quant Method : Z:\pestpcbsrv\HPCHEM1\ECD_D\Method\PD051924CLP.M
 Quant Title : GC Extractables
 QLast Update : Fri May 17 05:17:58 2024
 Response via : Initial Calibration
 Integrator: ChemStation

Volume Inj. : 1 µl
 Signal #1 Phase : ZB-MR1 Signal #2 Phase: ZB-MR2
 Signal #1 Info : 30M x 0.32mm x 0.5 Signal #2 Info : 30M x 0.32mm x 0.25µm



QEdit

(16) 4,4'-DDD (A)
 6.733min 43.998 ng/ml m
 response 68236311

(16) 4,4'-DDD #2 (A)
 5.777min 38.795 ng/ml m
 response 145975930

Data Path : Z:\pestpcbsrv\HPCHEM1\ECD_D\Data\PD052824\
 Data File : PD083176.D
 Signal(s) : Signal #1: ECD1A.ch Signal #2: ECD2B.ch
 Acq On : 28 May 2024 18:40
 Operator : ARVAJ
 Sample : P2569-19DL 2X
 Misc :
 ALS Vial : 12 Sample Multiplier: 1

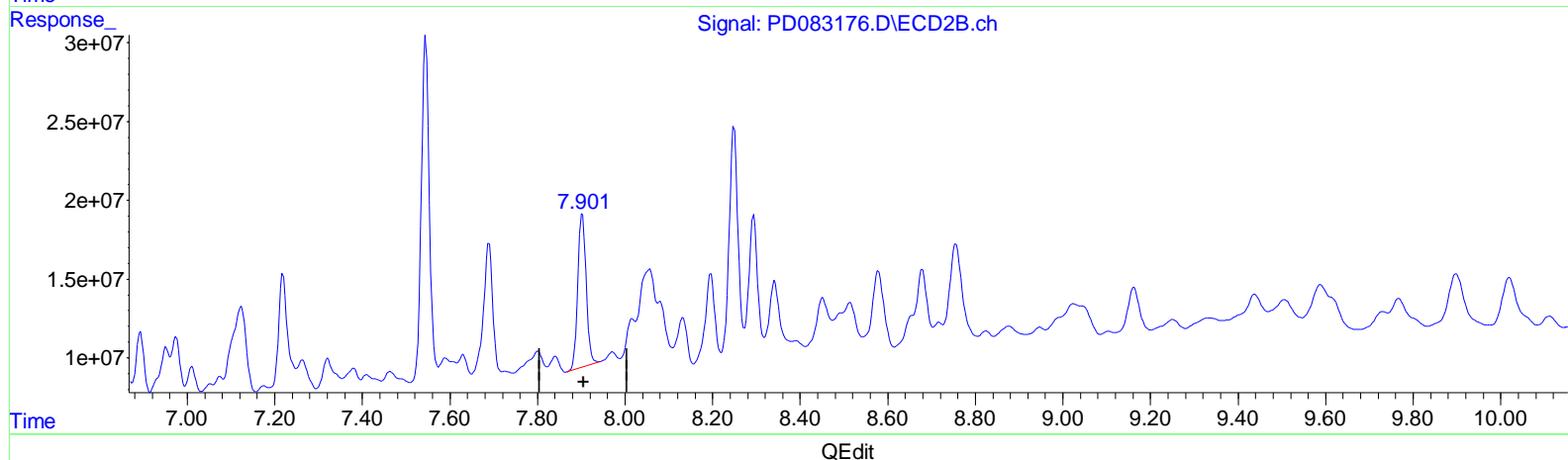
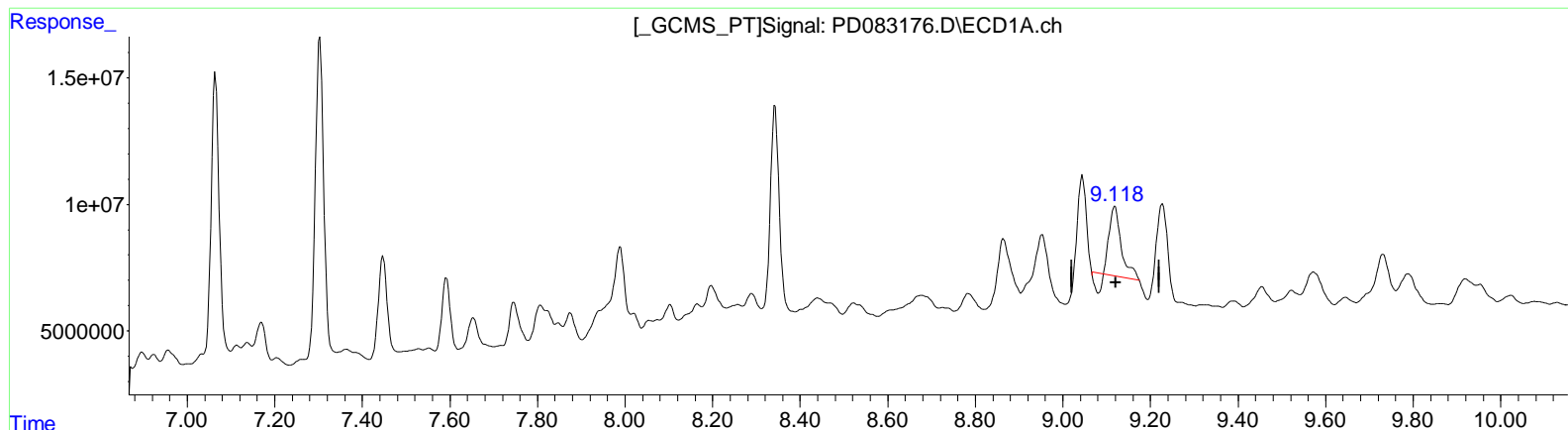
Instrument :
 ECD_D
ClientSampleId :
 BH6A5DL

Manual Integrations APPROVED

Reviewed By : Abdul Mirza 06/03/2024
 Supervised By : Ankita Jodhani 06/03/2024

Integration File signal 1: autoint1.e
 Integration File signal 2: autoint2.e
 Quant Time: May 28 21:31:35 2024
 Quant Method : Z:\pestpcbsrv\HPCHEM1\ECD_D\Method\PD051924CLP.M
 Quant Title : GC Extractables
 QLast Update : Fri May 17 05:17:58 2024
 Response via : Initial Calibration
 Integrator: ChemStation

Volume Inj. : 1 µl
 Signal #1 Phase : ZB-MR1 Signal #2 Phase: ZB-MR2
 Signal #1 Info : 30M x 0.32mm x 0.5 Signal #2 Info : 30M x 0.32mm x 0.25µm



(27) Decachlorobiphenyl (SA)
 9.119min 22.638 ng/ml
 response 45376213

(27) Decachlorobiphenyl #2 (SA)
 7.903min 32.822 ng/ml
 response 129860508

(+) = Expected Retention Time

Data Path : Z:\pestpcbsrv\HPCHEM1\ECD_D\Data\PD052824\
 Data File : PD083176.D
 Signal(s) : Signal #1: ECD1A.ch Signal #2: ECD2B.ch
 Acq On : 28 May 2024 18:40
 Operator : ARVAJ
 Sample : P2569-19DL 2X
 Misc :
 ALS Vial : 12 Sample Multiplier: 1

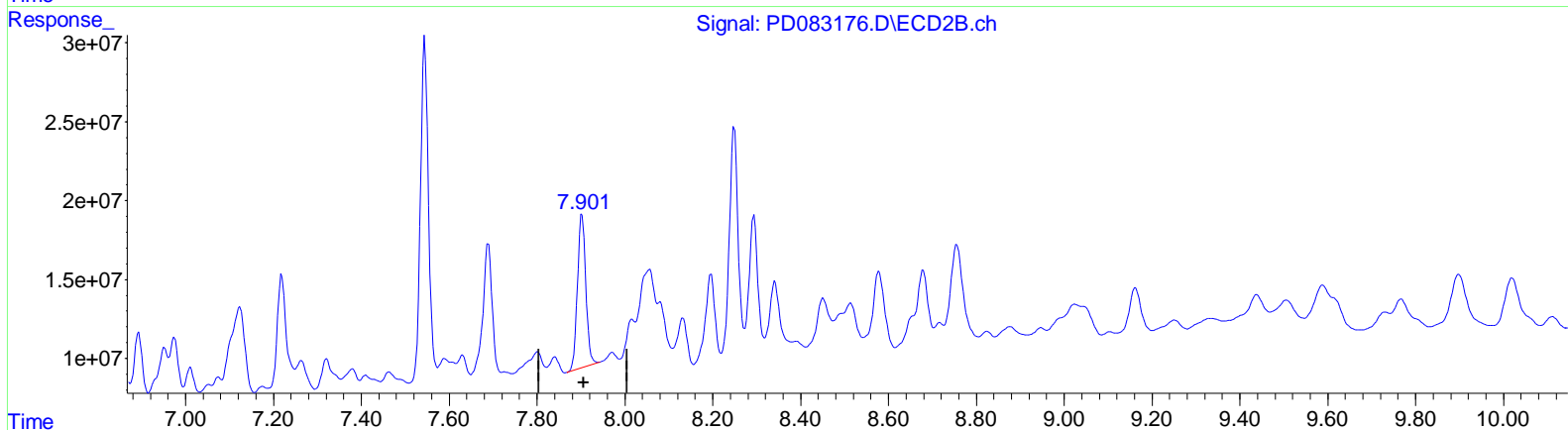
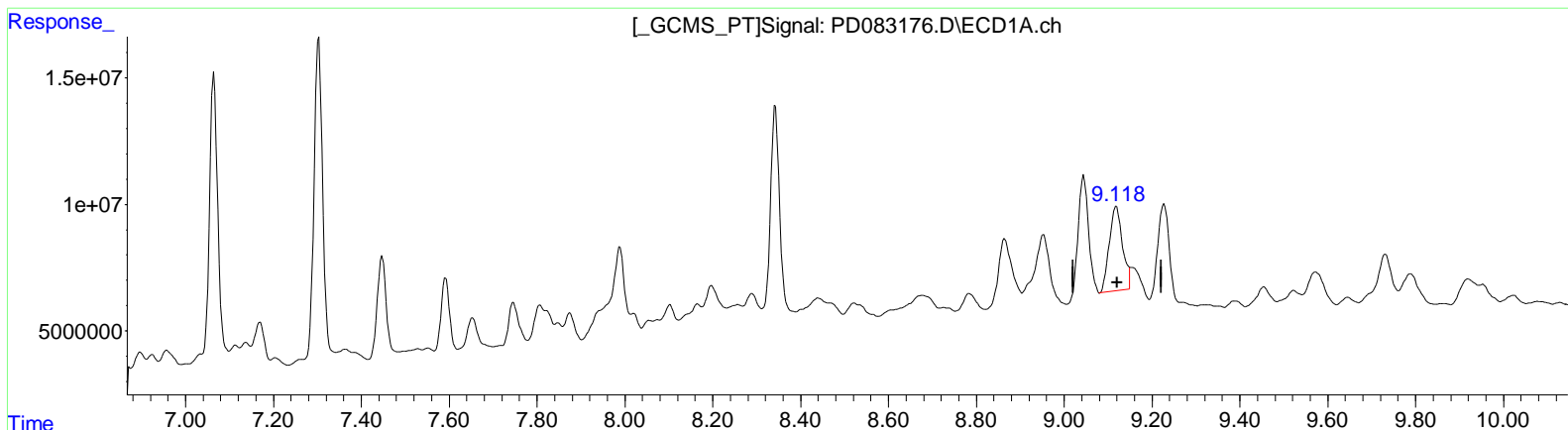
Instrument :
 ECD_D
ClientSampleId :
 BH6A5DL

Manual Integrations APPROVED

Reviewed By : Abdul Mirza 06/03/2024
 Supervised By : Ankita Jodhani 06/03/2024

Integration File signal 1: autoint1.e
 Integration File signal 2: autoint2.e
 Quant Time: May 28 21:31:35 2024
 Quant Method : Z:\pestpcbsrv\HPCHEM1\ECD_D\Method\PD051924CLP.M
 Quant Title : GC Extractables
 QLast Update : Fri May 17 05:17:58 2024
 Response via : Initial Calibration
 Integrator: ChemStation

Volume Inj. : 1 µl
 Signal #1 Phase : ZB-MR1 Signal #2 Phase: ZB-MR2
 Signal #1 Info : 30M x 0.32mm x 0.5 Signal #2 Info : 30M x 0.32mm x 0.25µm



(27) Decachlorobiphenyl (SA)
 9.118min 34.653 ng/ml
 response 69458087

(27) Decachlorobiphenyl #2 (SA)
 7.903min 32.822 ng/ml
 response 129860508

(+) = Expected Retention Time