

Data Path : Z:\pestpcbsrv\HPCHEM1\ECD_D\Data\PD052920\
 Data File : PD058221.D
 Signal(s) : Signal #1: ECD1A.ch Signal #2: ECD2B.ch
 Acq On : 29 May 2020 13:47
 Operator : AJ\MA
 Sample : PEM
 Misc :
 ALS Vial : 3 Sample Multiplier: 1

Instrument :
 ECD_D
 ClientSampled :

Integration File signal 1: autoint1.e
 Integration File signal 2: autoint2.e
 Quant Time: May 29 14:08:57 2020
 Quant Method : Z:\pestpcbsrv\HPCHEM1\ECD_D\Method\PD052120.M
 Quant Title : GC Extractables
 QLast Update : Thu May 21 13:46:14 2020
 Response via : Initial Calibration
 Integrator: ChemStation

Volume Inj. : 2 µl
 Signal #1 Phase : ZB-MR2 Signal #2 Phase: ZB-MR1
 Signal #1 Info : 30M x 0.32mm x0.2 Signal #2 Info : 30M x 0.32mm x 0.50µm

Compound	RT#1	RT#2	Resp#1	Resp#2	ng/ml	ng/ml

System Monitoring Compounds						
1) SA Tetrachlo...	3.209	3.867	14864901	21265573	19.020	18.672
28) SA Decachlor...	7.851	8.853	18038707	22877846	22.560	22.068
Target Compounds						
2) A alpha-BHC	3.631	4.248	10642908	15036110	8.778	8.831
3) MA gamma-BHC...	3.903	4.528	11528831	13718721	9.827	8.287
4) MA Heptachlor	4.153f	4.998f	4799874	814666	4.485	0.523 #
5) MB Aldrin	4.432f	0.000	1729215	0	1.648	N.D. #
6) B beta-BHC	4.153	4.699	4799874	6515575	9.926	9.719
8) B Heptachlo...	4.854	5.706	3618019	4338644	3.706	3.121
9) A Endosulfan I	5.178	0.000	1882299	0	2.063	N.D. #
10) B gamma-Chl...	5.080	0.000	2602805	0	2.621	N.D. #
11) B alpha-Chl...	5.125	0.000	1806226	0	1.826	N.D. #
13) MA Dieldrin	5.412	0.000	1177283	0	1.200	N.D. #
14) MA Endrin	5.667	6.532	43935724	58065638	54.923	54.977
15) B Endosulfa...	0.000	6.766f	0	1462545	N.D.	1.216 #
16) A 4,4'-DDD	5.809	6.662	121493	2538890	0.151	2.293 #
17) MA 4,4'-DDT	6.039	6.957	80521301	111.1E6	116.728	111.560
20) A Methoxychlor	6.588	7.415	106.3E6	150.8E6	269.454	261.357
21) B Endrin ke...	6.799	0.000	601521	0	0.555	N.D. #
25) Chlordane-3	5.080	0.000	2602805	0	29.040	N.D. #
26) Chlordane-4	5.125	0.000	1806226	0	21.141	N.D. #

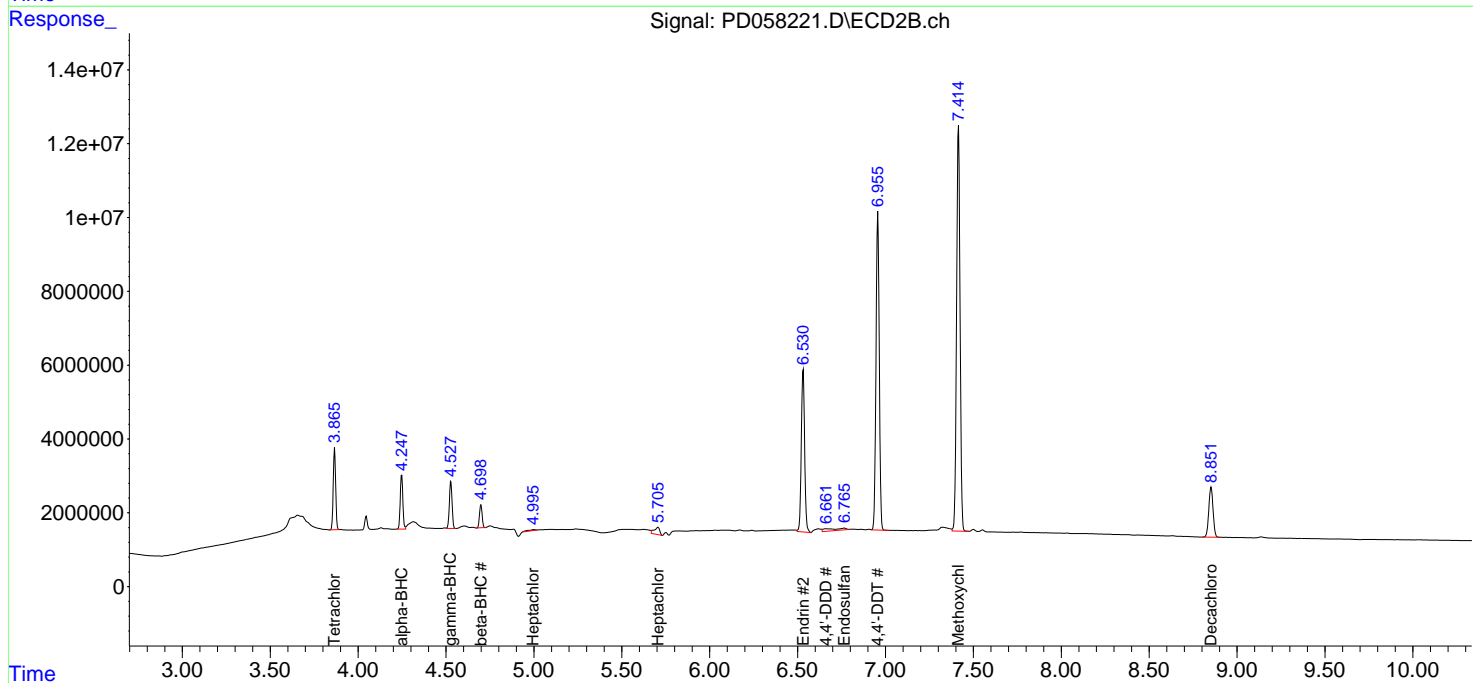
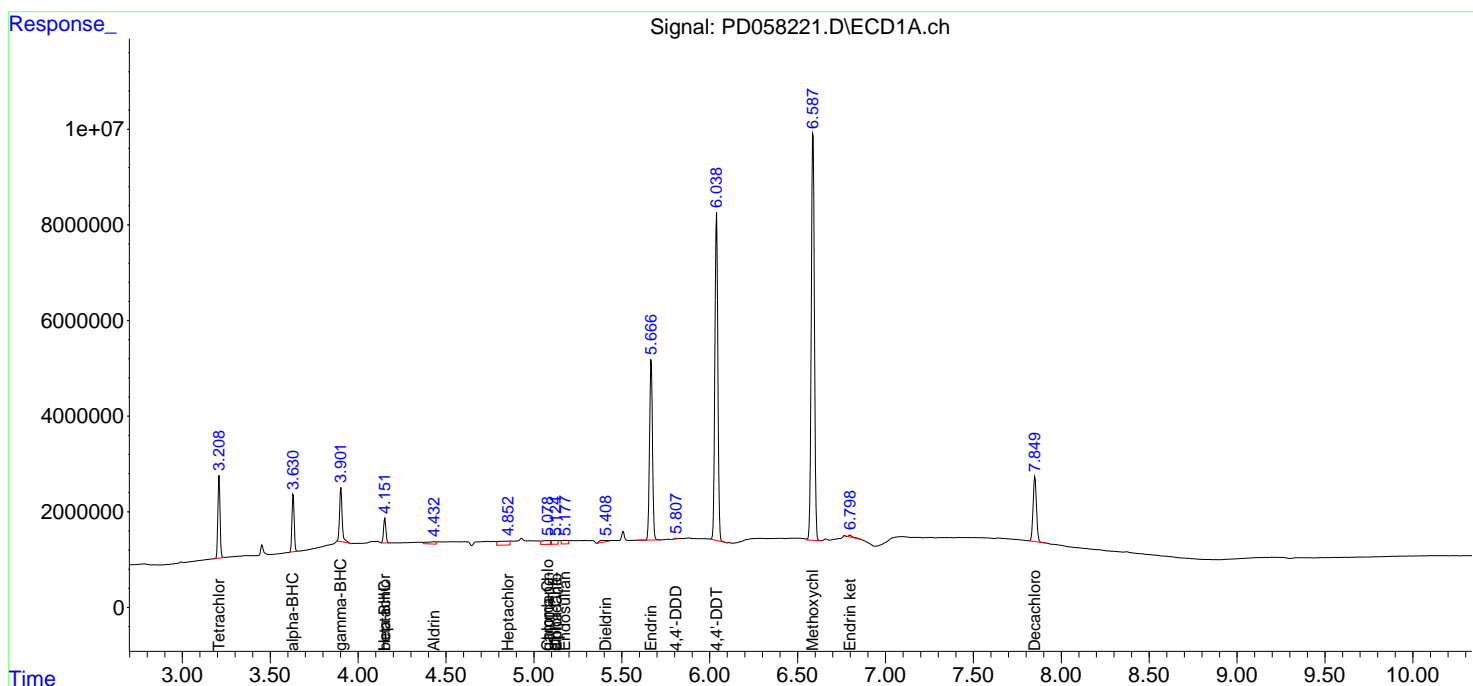
(f)=RT Delta > 1/2 Window (#)=Amounts differ by > 25% (m)=manual int.

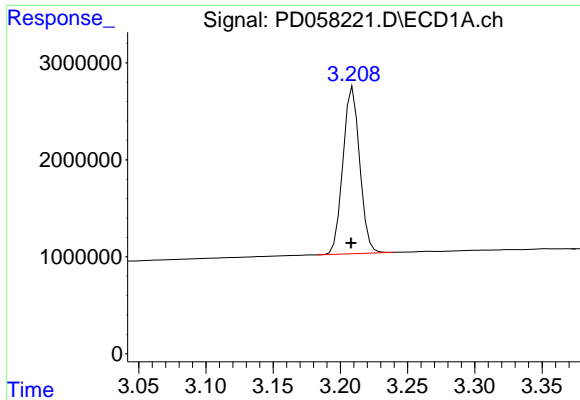
Data Path : Z:\pestpcbsrv\HPCHEM1\ECD_D\Data\PD052920\
 Data File : PD058221.D
 Signal(s) : Signal #1: ECD1A.ch Signal #2: ECD2B.ch
 Acq On : 29 May 2020 13:47
 Operator : AJ\MA
 Sample : PEM
 Misc :
 ALS Vial : 3 Sample Multiplier: 1

Instrument :
 ECD_D
 ClientSampled :

Integration File signal 1: autoint1.e
 Integration File signal 2: autoint2.e
 Quant Time: May 29 14:08:57 2020
 Quant Method : Z:\pestpcbsrv\HPCHEM1\ECD_D\Method\PD052120.M
 Quant Title : GC Extractables
 QLast Update : Thu May 21 13:46:14 2020
 Response via : Initial Calibration
 Integrator: ChemStation

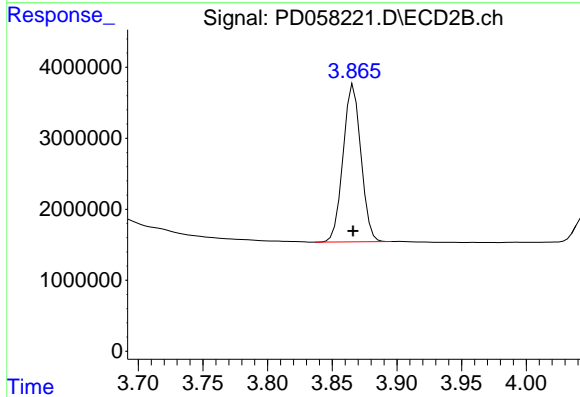
Volume Inj. : 2 µl
 Signal #1 Phase : ZB-MR2 Signal #2 Phase: ZB-MR1
 Signal #1 Info : 30M x 0.32mm x0.2 Signal #2 Info : 30M x 0.32mm x 0.50µm



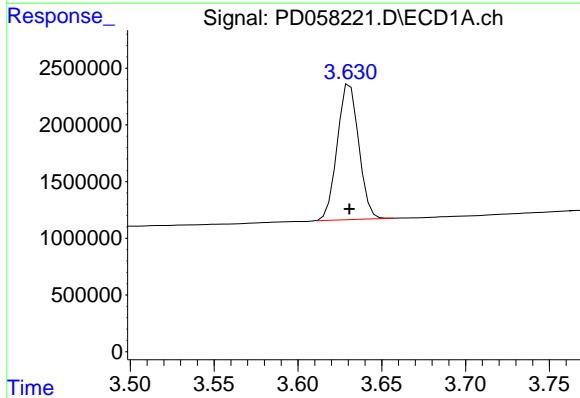


#1 Tetrachloro-m-xylene
 R.T.: 3.209 min
 Delta R.T.: 0.001 min
 Response: 14864901
 Conc: 19.02 ng/ml

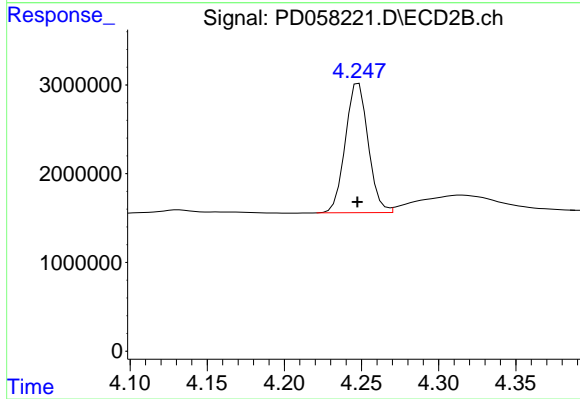
Instrument :
 ECD_D
 ClientSampleId :



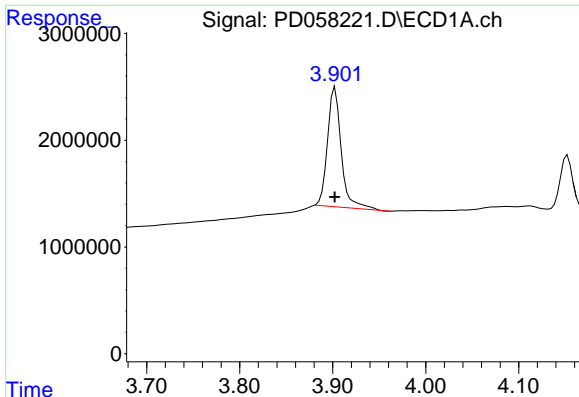
#1 Tetrachloro-m-xylene
 R.T.: 3.867 min
 Delta R.T.: 0.000 min
 Response: 21265573
 Conc: 18.67 ng/ml



#2 alpha-BHC
 R.T.: 3.631 min
 Delta R.T.: 0.000 min
 Response: 10642908
 Conc: 8.78 ng/ml

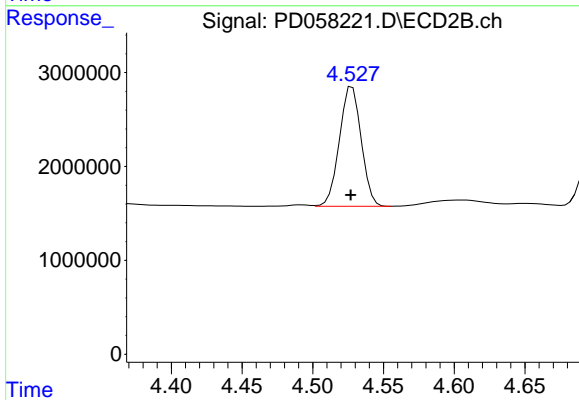


#2 alpha-BHC
 R.T.: 4.248 min
 Delta R.T.: 0.000 min
 Response: 15036110
 Conc: 8.83 ng/ml

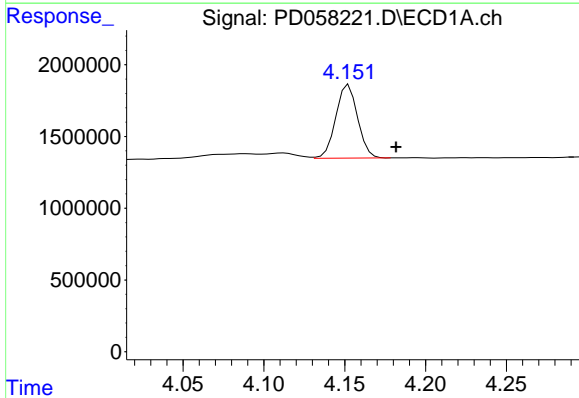


#3 gamma-BHC (Lindane)
 R.T.: 3.903 min
 Delta R.T.: 0.000 min
 Response: 11528831
 Conc: 9.83 ng/ml

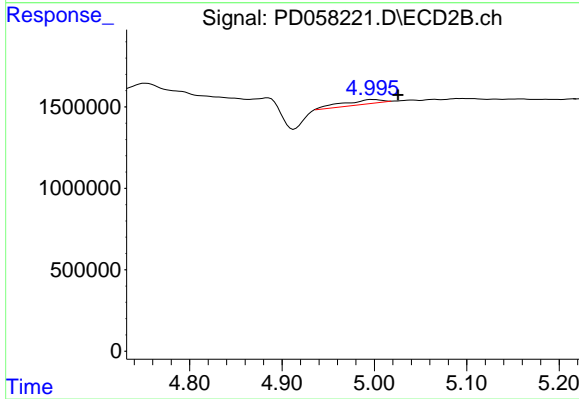
Instrument :
 ECD_D
 ClientSampleId :



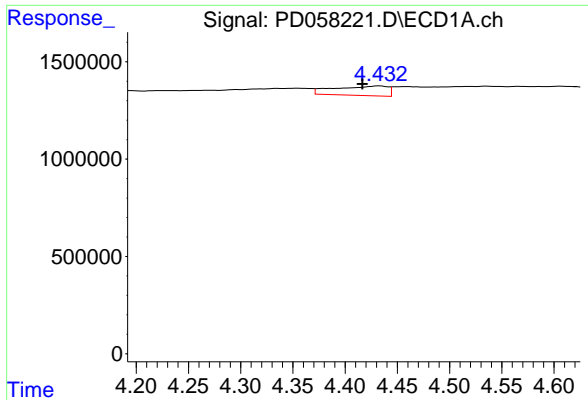
#3 gamma-BHC (Lindane)
 R.T.: 4.528 min
 Delta R.T.: 0.001 min
 Response: 13718721
 Conc: 8.29 ng/ml



#4 Heptachlor
 R.T.: 4.153 min
 Delta R.T.: -0.029 min
 Response: 4799874
 Conc: 4.48 ng/ml

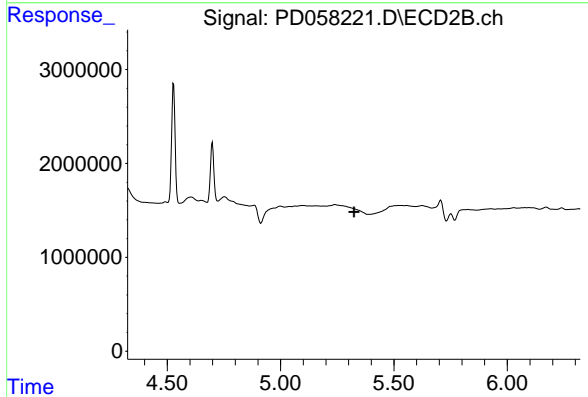


#4 Heptachlor
 R.T.: 4.998 min
 Delta R.T.: -0.028 min
 Response: 814666
 Conc: 0.52 ng/ml

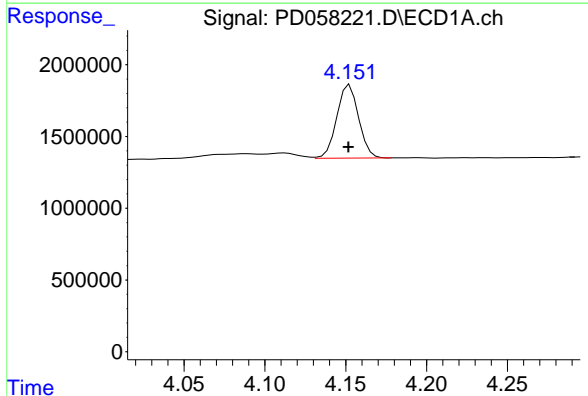


#5 Aldrin
 R.T.: 4.432 min
 Delta R.T.: 0.016 min
 Response: 1729215
 Conc: 1.65 ng/ml

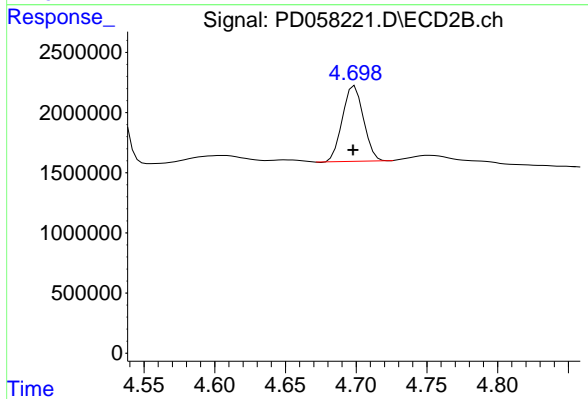
Instrument :
 ECD_D
 ClientSampled :



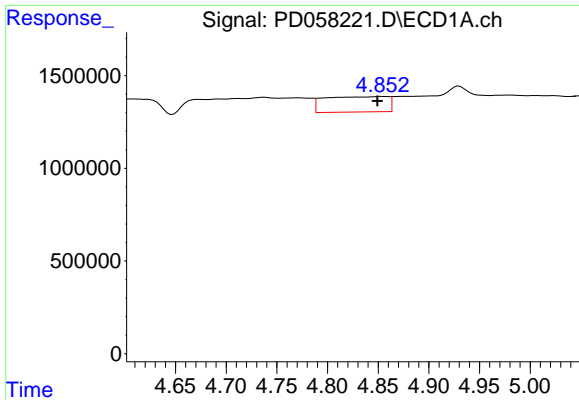
#5 Aldrin
 R.T.: 0.000 min
 Exp R.T. : 5.325 min
 Response: 0
 Conc: N.D.



#6 beta-BHC
 R.T.: 4.153 min
 Delta R.T.: 0.001 min
 Response: 4799874
 Conc: 9.93 ng/ml

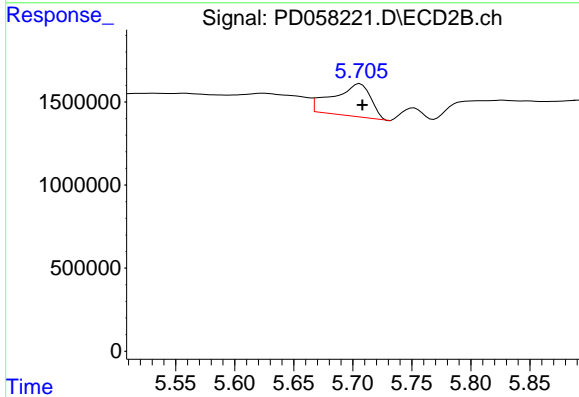


#6 beta-BHC
 R.T.: 4.699 min
 Delta R.T.: 0.001 min
 Response: 6515575
 Conc: 9.72 ng/ml

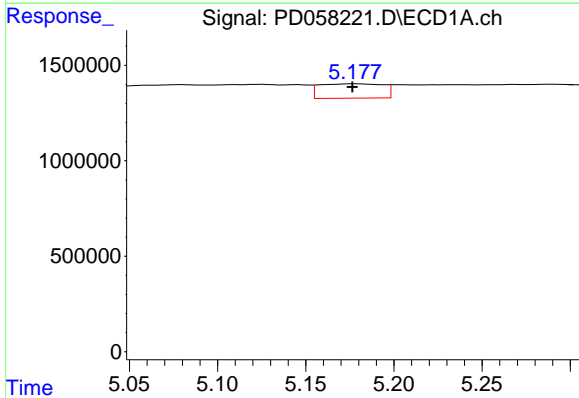


#8 Heptachlor epoxide
 R.T.: 4.854 min
 Delta R.T.: 0.004 min
 Response: 3618019
 Conc: 3.71 ng/ml

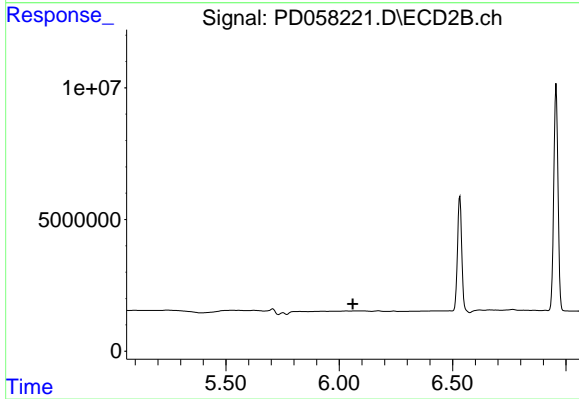
Instrument :
 ECD_D
 ClientSampled :



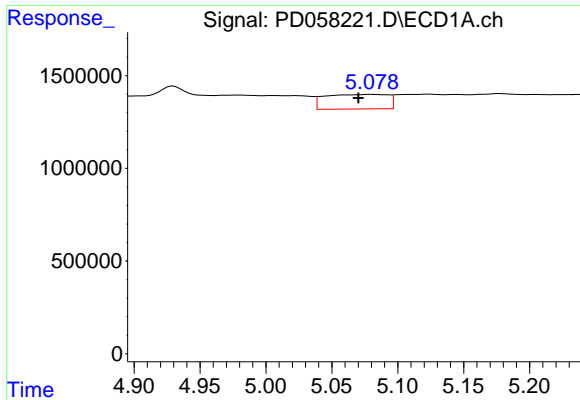
#8 Heptachlor epoxide
 R.T.: 5.706 min
 Delta R.T.: -0.002 min
 Response: 4338644
 Conc: 3.12 ng/ml



#9 Endosulfan I
 R.T.: 5.178 min
 Delta R.T.: 0.002 min
 Response: 1882299
 Conc: 2.06 ng/ml

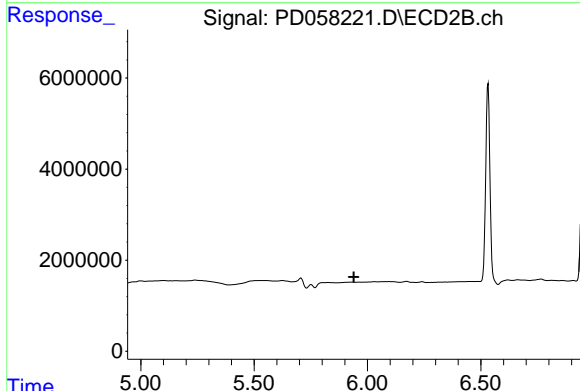


#9 Endosulfan I
 R.T.: 0.000 min
 Exp R.T. : 6.060 min
 Response: 0
 Conc: N.D.

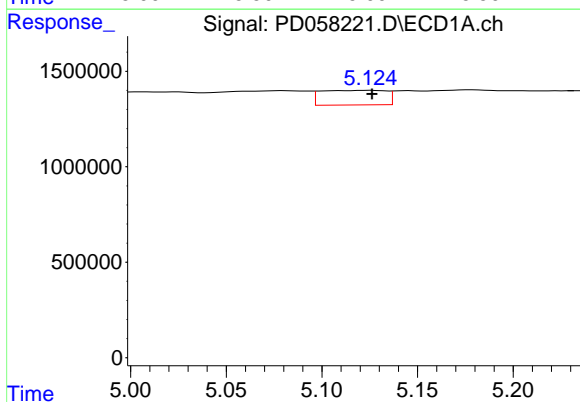


#10 gamma-Chlordane
 R.T.: 5.080 min
 Delta R.T.: 0.010 min
 Response: 2602805
 Conc: 2.62 ng/ml

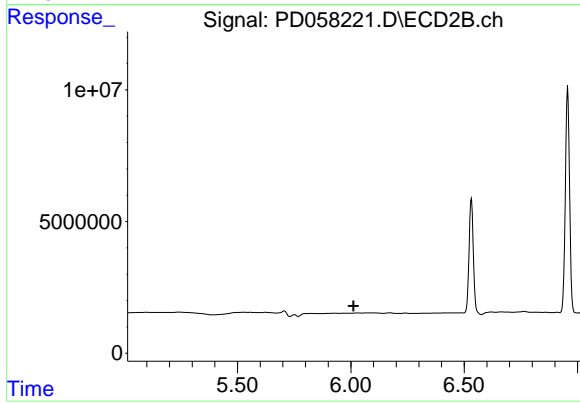
Instrument :
 ECD_D
 ClientSampled :



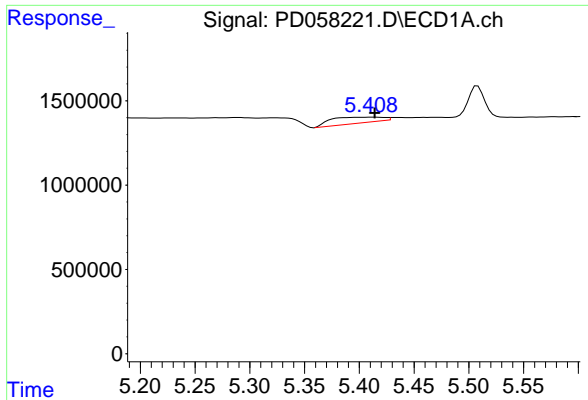
#10 gamma-Chlordane
 R.T.: 0.000 min
 Exp R.T. : 5.940 min
 Response: 0
 Conc: N.D.



#11 alpha-Chlordane
 R.T.: 5.125 min
 Delta R.T.: -0.001 min
 Response: 1806226
 Conc: 1.83 ng/ml

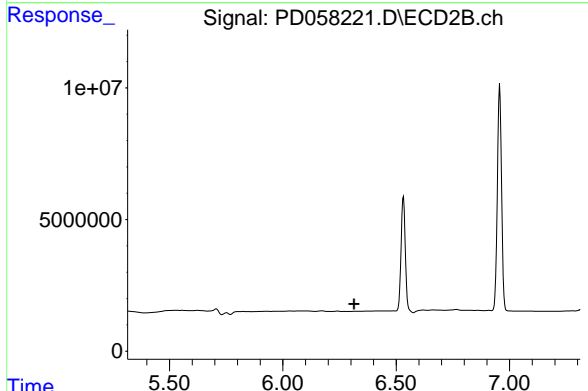


#11 alpha-Chlordane
 R.T.: 0.000 min
 Exp R.T. : 6.012 min
 Response: 0
 Conc: N.D.

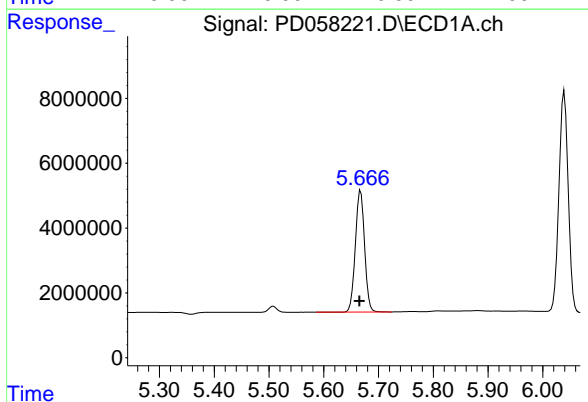


#13 Dieldrin
 R.T.: 5.412 min
 Delta R.T.: -0.002 min
 Response: 1177283
 Conc: 1.20 ng/ml

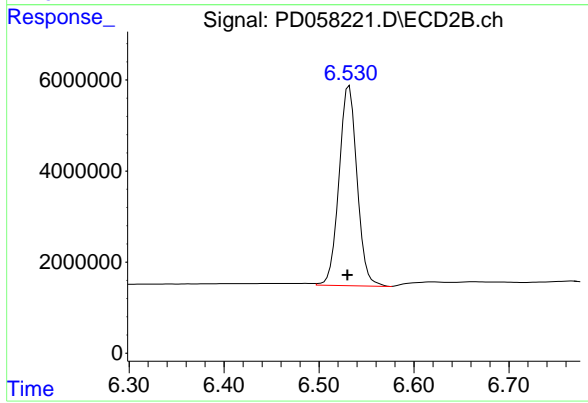
Instrument :
 ECD_D
 ClientSampled :



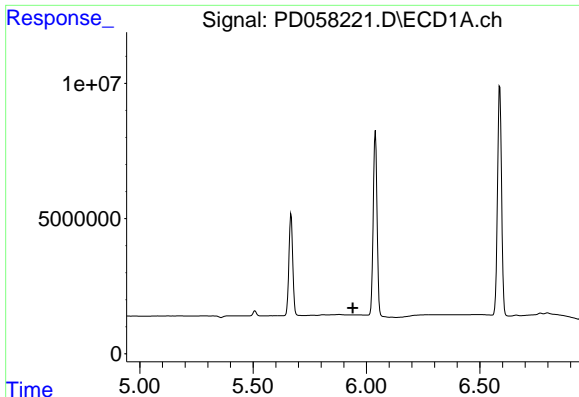
#13 Dieldrin
 R.T.: 0.000 min
 Exp R.T. : 6.315 min
 Response: 0
 Conc: N.D.



#14 Endrin
 R.T.: 5.667 min
 Delta R.T.: 0.002 min
 Response: 43935724
 Conc: 54.92 ng/ml



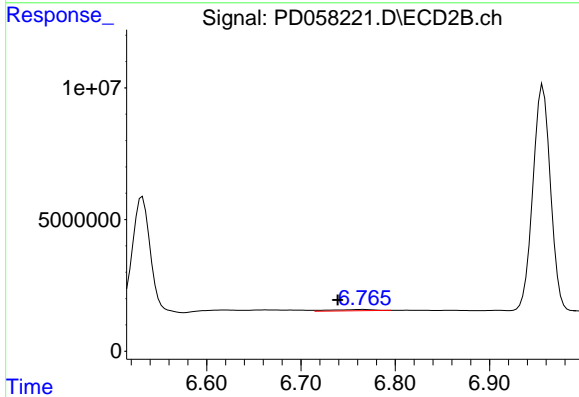
#14 Endrin
 R.T.: 6.532 min
 Delta R.T.: 0.002 min
 Response: 58065638
 Conc: 54.98 ng/ml



#15 Endosulfan II

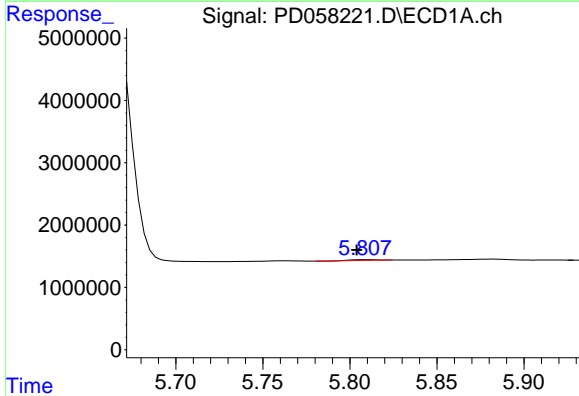
R.T.: 0.000 min
 Exp R.T.: 5.939 min
 Response: 0
 Conc: N.D.

Instrument :
 ECD_D
 ClientSampleId :



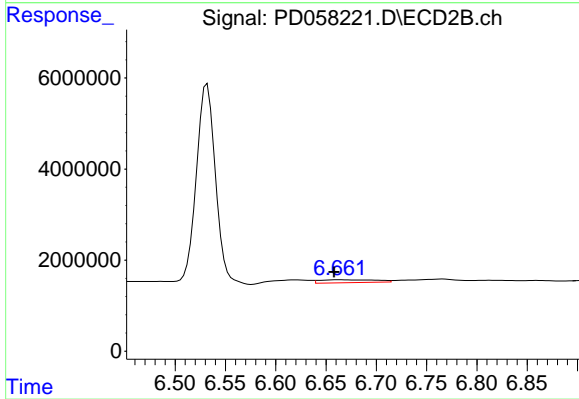
#15 Endosulfan II

R.T.: 6.766 min
 Delta R.T.: 0.027 min
 Response: 1462545
 Conc: 1.22 ng/ml



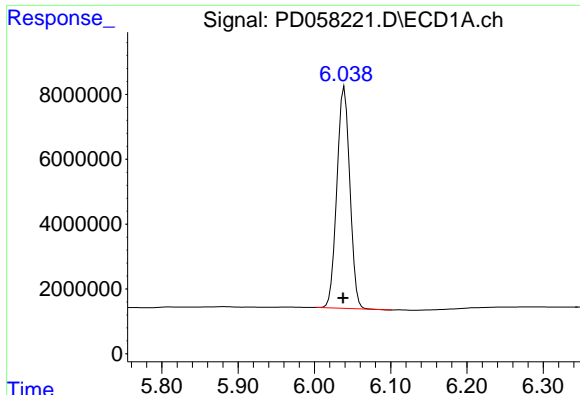
#16 4,4'-DDD

R.T.: 5.809 min
 Delta R.T.: 0.005 min
 Response: 121493
 Conc: 0.15 ng/ml



#16 4,4'-DDD

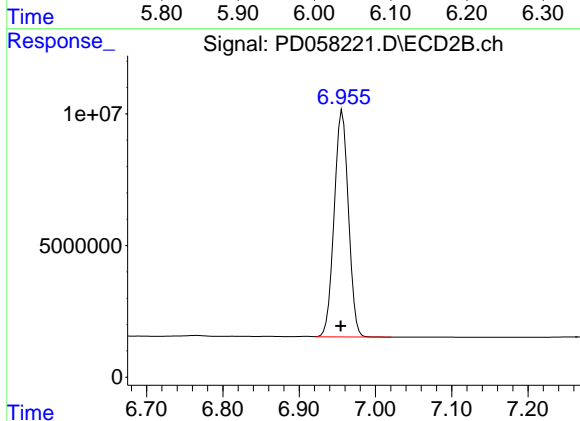
R.T.: 6.662 min
 Delta R.T.: 0.004 min
 Response: 2538890
 Conc: 2.29 ng/ml



#17 4,4'-DDT

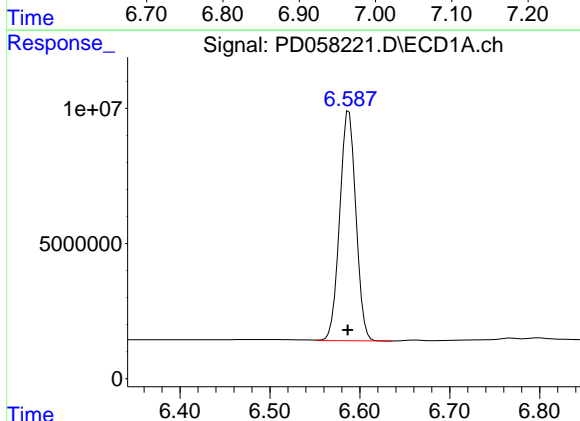
R.T.: 6.039 min
Delta R.T.: 0.002 min
Response: 80521301
Conc: 116.73 ng/ml

Instrument :
ECD_D
ClientSampleId :



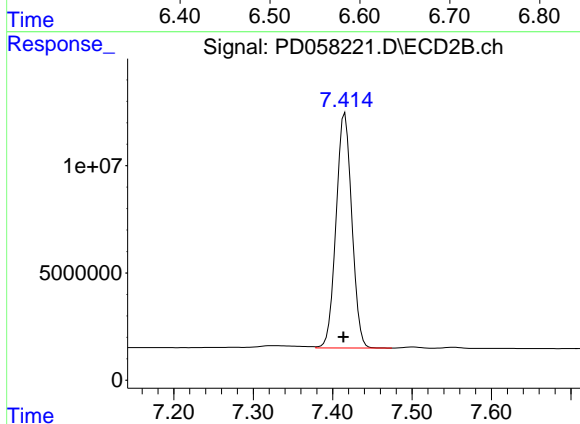
#17 4,4'-DDT

R.T.: 6.957 min
Delta R.T.: 0.002 min
Response: 111064461
Conc: 111.56 ng/ml



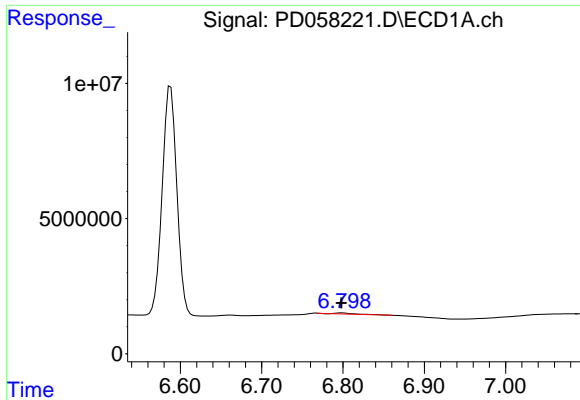
#20 Methoxychlor

R.T.: 6.588 min
Delta R.T.: 0.002 min
Response: 106335868
Conc: 269.45 ng/ml



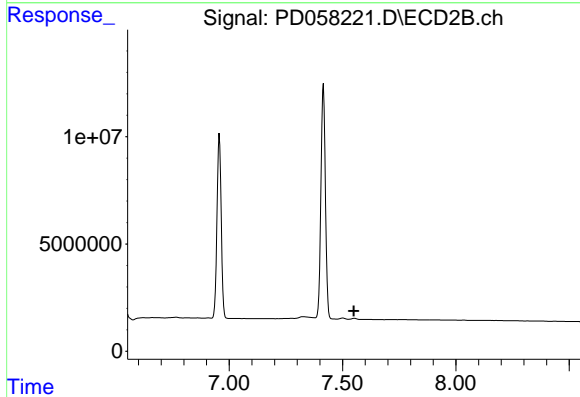
#20 Methoxychlor

R.T.: 7.415 min
Delta R.T.: 0.002 min
Response: 150772312
Conc: 261.36 ng/ml

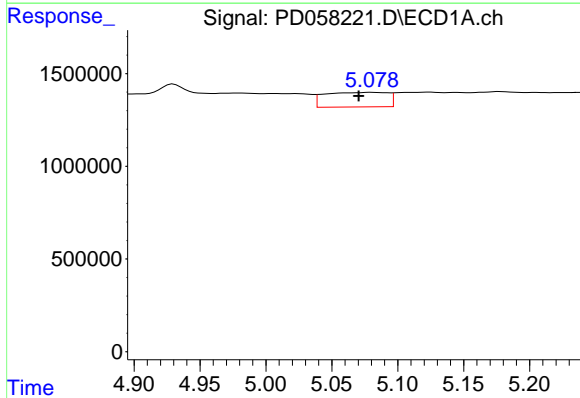


#21 Endrin ketone
 R.T.: 6.799 min
 Delta R.T.: 0.000 min
 Response: 601521
 Conc: 0.56 ng/ml

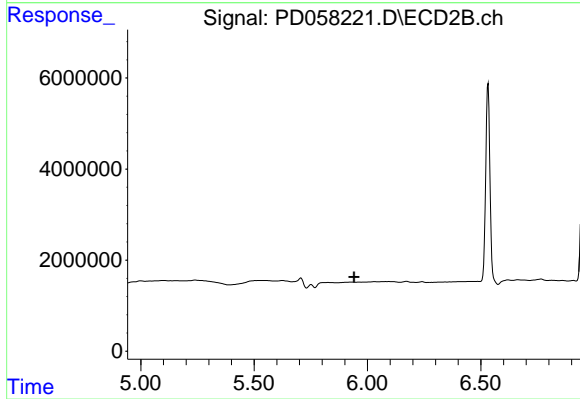
Instrument :
 ECD_D
 ClientSampleId :



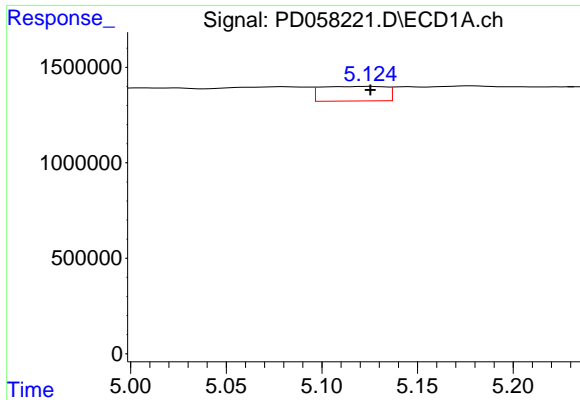
#21 Endrin ketone
 R.T.: 0.000 min
 Exp R.T. : 7.550 min
 Response: 0
 Conc: N.D.



#25 Chlordane-3
 R.T.: 5.080 min
 Delta R.T.: 0.010 min
 Response: 2602805
 Conc: 29.04 ng/ml

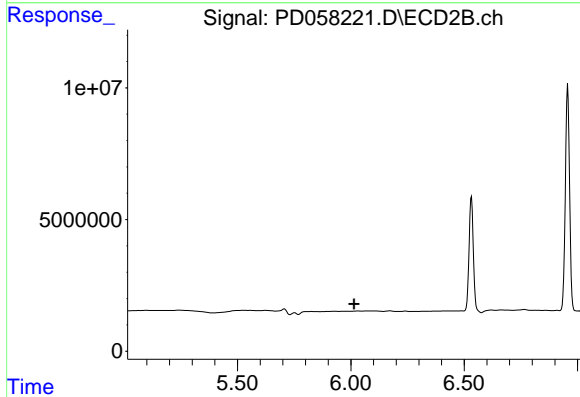


#25 Chlordane-3
 R.T.: 0.000 min
 Exp R.T. : 5.941 min
 Response: 0
 Conc: N.D.

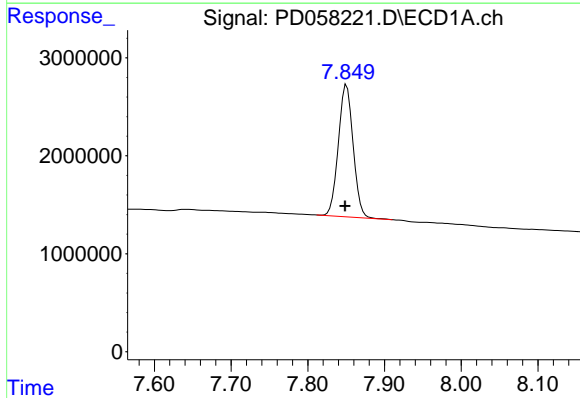


#26 Chlordane-4
 R.T.: 5.125 min
 Delta R.T.: 0.000 min
 Response: 1806226
 Conc: 21.14 ng/ml

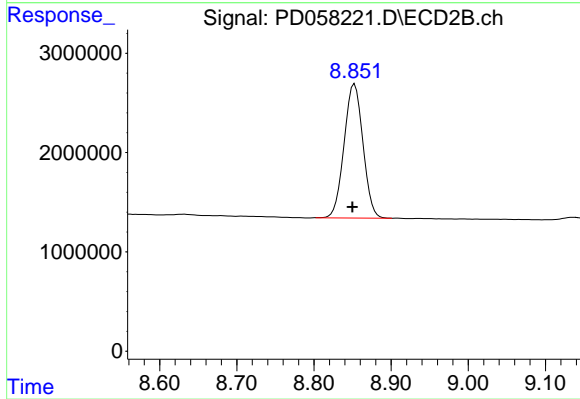
Instrument :
 ECD_D
 ClientSampleId :



#26 Chlordane-4
 R.T.: 0.000 min
 Exp R.T. : 6.015 min
 Response: 0
 Conc: N.D.



#28 Decachlorobiphenyl
 R.T.: 7.851 min
 Delta R.T.: 0.002 min
 Response: 18038707
 Conc: 22.56 ng/ml



#28 Decachlorobiphenyl
 R.T.: 8.853 min
 Delta R.T.: 0.003 min
 Response: 22877846
 Conc: 22.07 ng/ml