

Data Path : Z:\pestpcbsrv\HPCHEM1\ECD_D\Data\PD053025\
 Data File : PD088773.D
 Signal(s) : Signal #1: ECD1A.ch Signal #2: ECD2B.ch
 Acq On : 29 May 2025 13:49
 Operator : AR\AJ
 Sample : PB168153BL
 Misc :
 ALS Vial : 6 Sample Multiplier: 1

Instrument :
 ECD_D
 ClientSampleId :

Integration File signal 1: autoint1.e
 Integration File signal 2: autoint2.e
 Quant Time: May 30 01:55:40 2025
 Quant Method : Z:\pestpcbsrv\HPCHEM1\ECD_D\Method\DTX051925.M
 Quant Title : GC Extractables
 QLast Update : Mon May 19 14:50:59 2025
 Response via : Initial Calibration
 Integrator: ChemStation

Volume Inj. : 1 µl
 Signal #1 Phase : ZB-MR1 Signal #2 Phase: ZB-MR2
 Signal #1 Info : 30M x 0.32mm x 0. Signal #2 Info : 30M x 0.32mm x 0.25µm

Compound	RT#1	RT#2	Resp#1	Resp#2	ng/ml	ng/ml

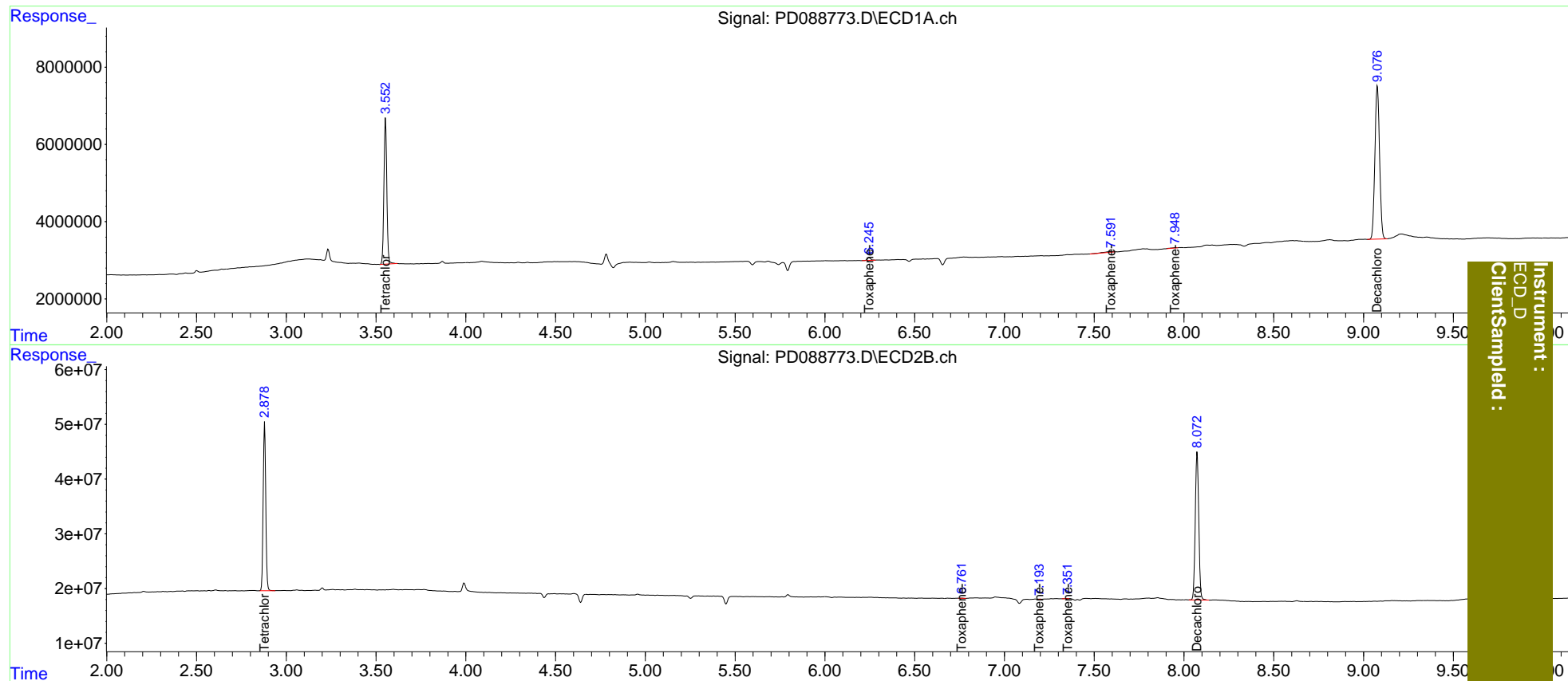
System Monitoring Compounds						
1) SA Tetrachlo...	3.553	2.880	42413780	308.6E6	18.851	19.578
7) SA Decachlor...	9.077	8.074	71608728	366.2E6	20.334	19.452
Target Compounds						
2) Toxaphene-1	6.247	5.483	886802	-2199011	32.103	N.D. #
4) Toxaphene-3	0.000	6.762	0	507570	N.D.	1.124 #
5) Toxaphene-4	7.592f	7.196	722573	115184	7.668	0.358 #
6) Toxaphene-5	7.950f	7.353f	222385	144698	4.120	0.676 #

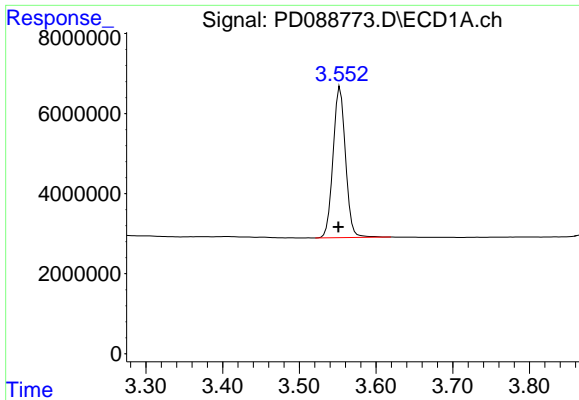
(f)=RT Delta > 1/2 Window (#)=Amounts differ by > 25% (m)=manual int.

Data Path : Z:\pestpcbsrv\HPCHEM1\ECD_D\Data\PD053025\
 Data File : PD088773.D
 Signal(s) : Signal #1: ECD1A.ch Signal #2: ECD2B.ch
 Acq On : 29 May 2025 13:49
 Operator : AR\AJ
 Sample : PB168153BL
 Misc :
 ALS Vial : 6 Sample Multiplier: 1

Integration File signal 1: autoint1.e
 Integration File signal 2: autoint2.e
 Quant Time: May 30 01:55:40 2025
 Quant Method : Z:\pestpcbsrv\HPCHEM1\ECD_D\Method\DTX051925.M
 Quant Title : GC Extractables
 QLast Update : Mon May 19 14:50:59 2025
 Response via : Initial Calibration
 Integrator: ChemStation

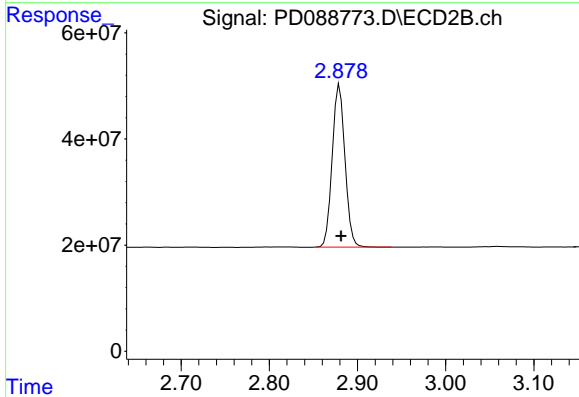
Volume Inj. : 1 µl
 Signal #1 Phase : ZB-MR1 Signal #2 Phase: ZB-MR2
 Signal #1 Info : 30M x 0.32mm x 0. Signal #2 Info : 30M x 0.32mm x0.25µm



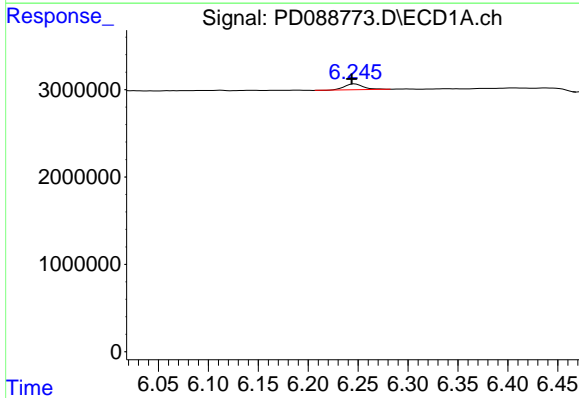


#1 Tetrachloro-m-xylene
 R.T.: 3.553 min
 Delta R.T.: 0.002 min
 Response: 42413780
 Conc: 18.85 ng/ml

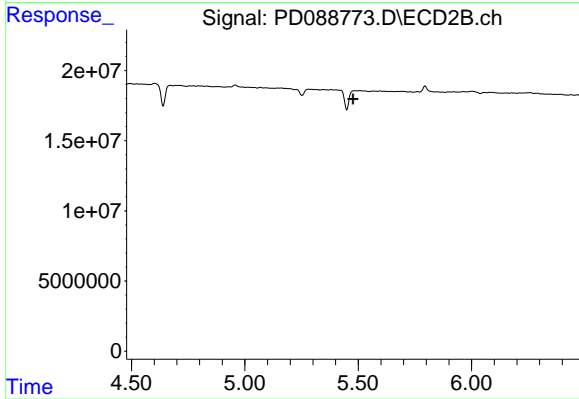
Instrument :
 ECD_D
 ClientSampleId :



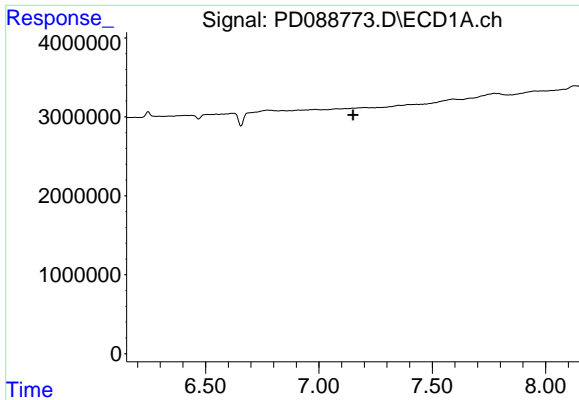
#1 Tetrachloro-m-xylene
 R.T.: 2.880 min
 Delta R.T.: -0.002 min
 Response: 308599128
 Conc: 19.58 ng/ml



#2 Toxaphene-1
 R.T.: 6.247 min
 Delta R.T.: 0.003 min
 Response: 886802
 Conc: 32.10 ng/ml



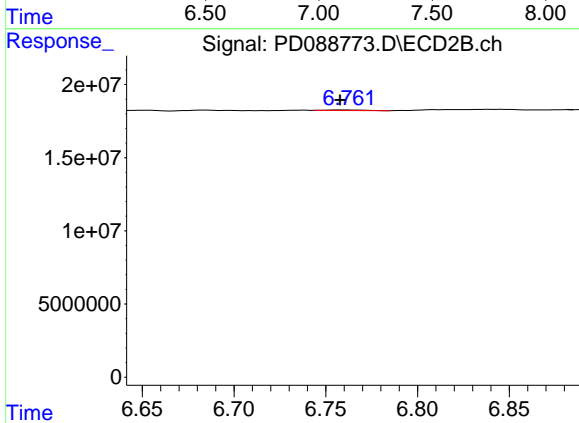
#2 Toxaphene-1
 R.T.: 5.483 min
 Delta R.T.: 0.005 min
 Response: -2199011
 Conc: N.D.



#4 Toxaphene-3

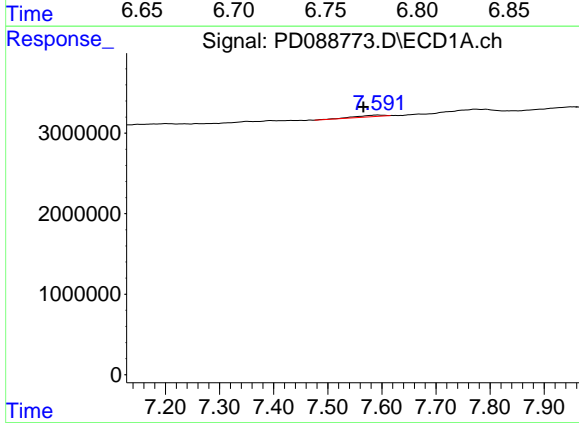
R.T.: 0.000 min
 Exp R.T.: 7.151 min
 Response: 0
 Conc: N.D.

Instrument :
 ECD_D
 ClientSampleId :



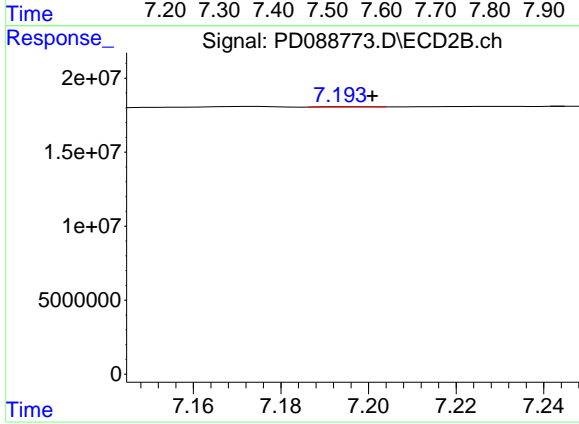
#4 Toxaphene-3

R.T.: 6.762 min
 Delta R.T.: 0.004 min
 Response: 507570
 Conc: 1.12 ng/ml



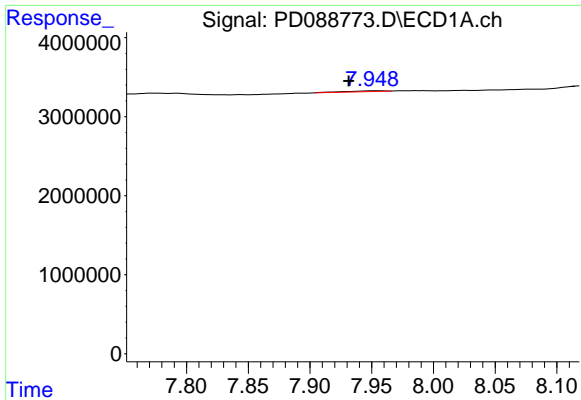
#5 Toxaphene-4

R.T.: 7.592 min
 Delta R.T.: 0.027 min
 Response: 722573
 Conc: 7.67 ng/ml



#5 Toxaphene-4

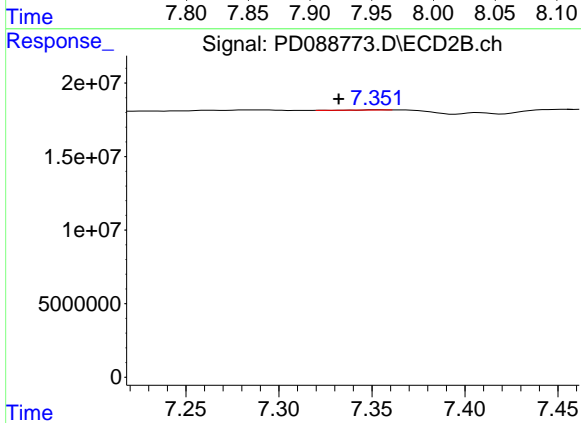
R.T.: 7.196 min
 Delta R.T.: -0.005 min
 Response: 115184
 Conc: 0.36 ng/ml



#6 Toxaphene-5

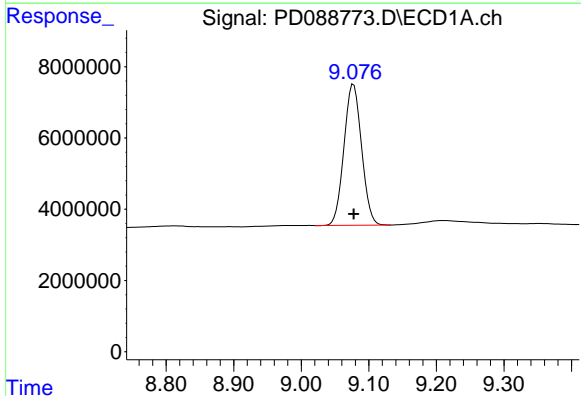
R.T.: 7.950 min
 Delta R.T.: 0.018 min
 Response: 222385
 Conc: 4.12 ng/ml

Instrument :
 ECD_D
 ClientSampleId :



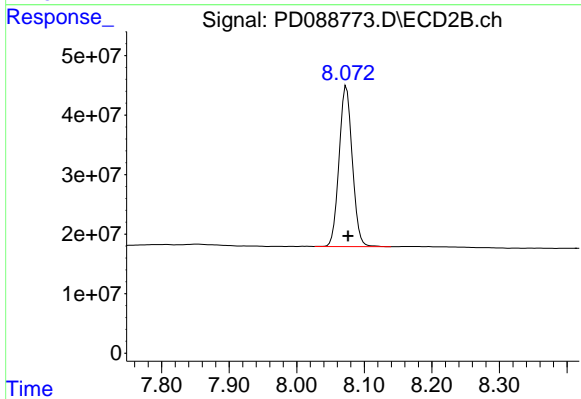
#6 Toxaphene-5

R.T.: 7.353 min
 Delta R.T.: 0.021 min
 Response: 144698
 Conc: 0.68 ng/ml



#7 Decachlorobiphenyl

R.T.: 9.077 min
 Delta R.T.: 0.000 min
 Response: 71608728
 Conc: 20.33 ng/ml



#7 Decachlorobiphenyl

R.T.: 8.074 min
 Delta R.T.: -0.002 min
 Response: 366195402
 Conc: 19.45 ng/ml