

Data Path : Z:\pestpcbsrv\HPCHEM1\ECD_D\Data\PD060120\
 Data File : PD058225.D
 Signal(s) : Signal #1: ECD1A.ch Signal #2: ECD2B.ch
 Acq On : 01 Jun 2020 08:49
 Operator : AJ\MA
 Sample : I.BLK
 Misc :
 ALS Vial : 2 Sample Multiplier: 1

Instrument :
 ECD_D
 ClientSampleId :

Integration File signal 1: autoint1.e
 Integration File signal 2: autoint2.e
 Quant Time: Jun 01 12:47:37 2020
 Quant Method : Z:\pestpcbsrv\HPCHEM1\ECD_D\Method\PD060120.M
 Quant Title : GC Extractables
 QLast Update : Mon Jun 01 12:24:01 2020
 Response via : Initial Calibration
 Integrator: ChemStation

Volume Inj. : 2 µl
 Signal #1 Phase : ZB-MR2 Signal #2 Phase: ZB-MR1
 Signal #1 Info : 30M x 0.32mm x0.2 Signal #2 Info : 30M x 0.32mm x 0.50µm

| Compound | RT#1 | RT#2 | Resp#1 | Resp#2 | ng/ml | ng/ml |
|-----------------------------|--------|-------|----------|----------|--------|--------|
| ----- | | | | | | |
| System Monitoring Compounds | | | | | | |
| 1) SA Tetrachlo... | 3.209 | 3.865 | 17395088 | 26906169 | 22.222 | 22.527 |
| 28) SA Decachlor... | 7.852 | 8.850 | 18853792 | 26518092 | 21.947 | 22.138 |
| Target Compounds | | | | | | |
| 3) MA gamma-BHC... | 3.914 | 0.000 | 532874 | 0 | 0.463 | N.D. # |
| 10) B gamma-Chl... | 5.050f | 0.000 | 103788 | 0 | 0.113 | N.D. # |
| 25) Chlordane-3 | 5.050f | 0.000 | 103788 | 0 | 1.241 | N.D. # |
| ----- | | | | | | |

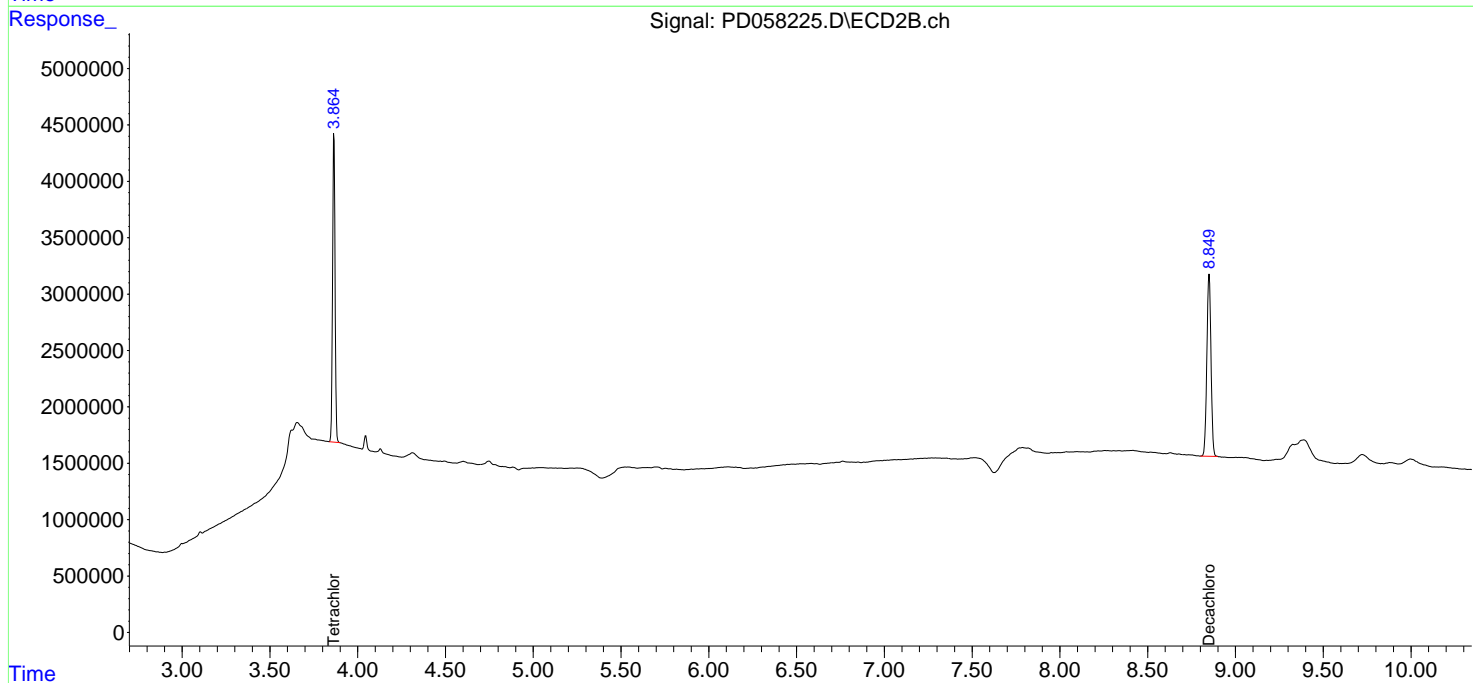
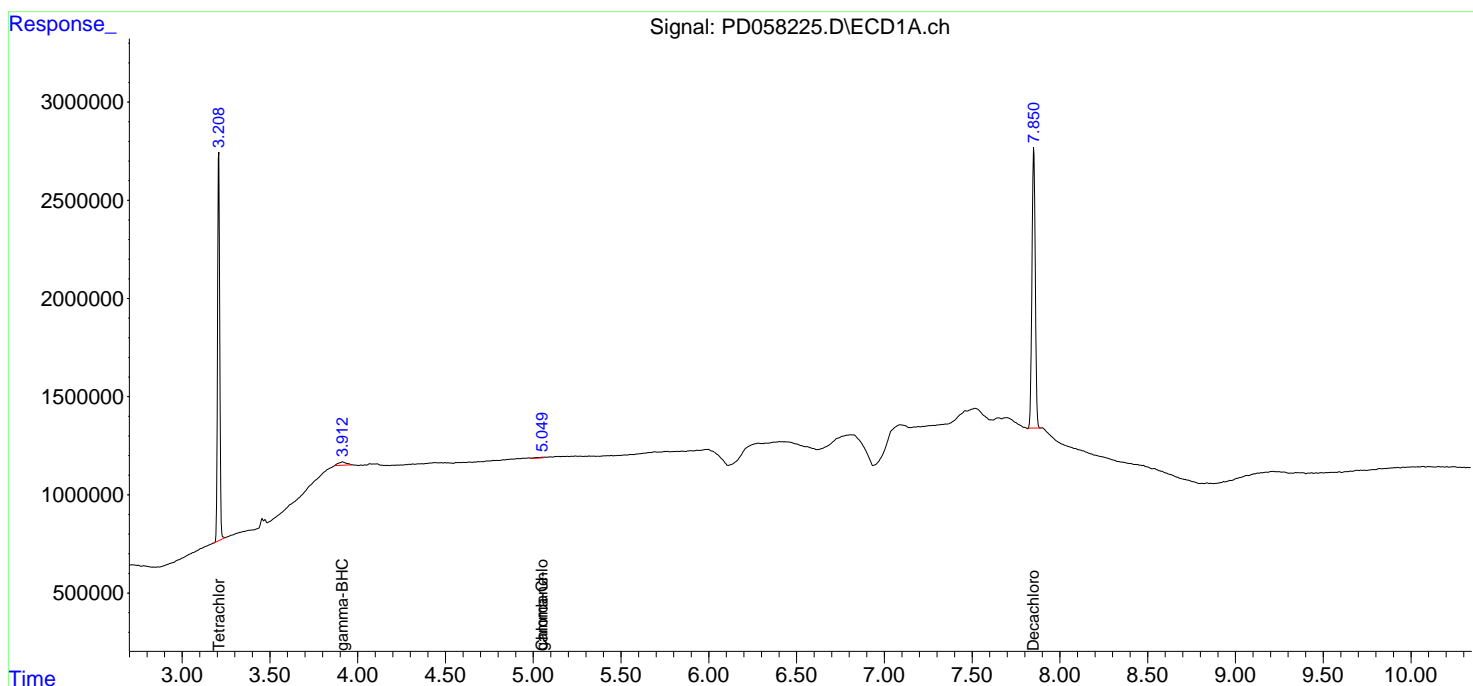
(f)=RT Delta > 1/2 Window (#)=Amounts differ by > 25% (m)=manual int.

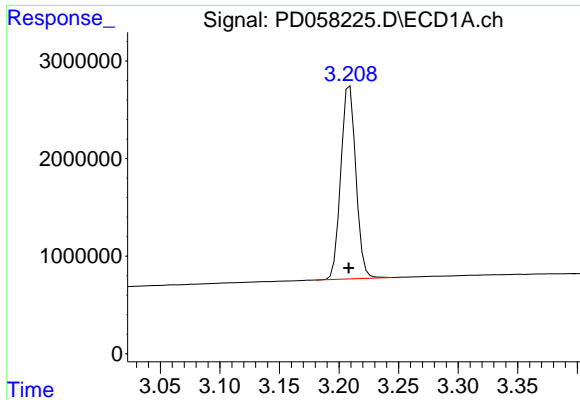
Data Path : Z:\pestpcbsrv\HPCHEM1\ECD_D\Data\PD060120\
 Data File : PD058225.D
 Signal(s) : Signal #1: ECD1A.ch Signal #2: ECD2B.ch
 Acq On : 01 Jun 2020 08:49
 Operator : AJ\MA
 Sample : I.BLK
 Misc :
 ALS Vial : 2 Sample Multiplier: 1

Instrument :
 ECD_D
 ClientSampled :

Integration File signal 1: autoint1.e
 Integration File signal 2: autoint2.e
 Quant Time: Jun 01 12:47:37 2020
 Quant Method : Z:\pestpcbsrv\HPCHEM1\ECD_D\Method\PD060120.M
 Quant Title : GC Extractables
 QLast Update : Mon Jun 01 12:24:01 2020
 Response via : Initial Calibration
 Integrator: ChemStation

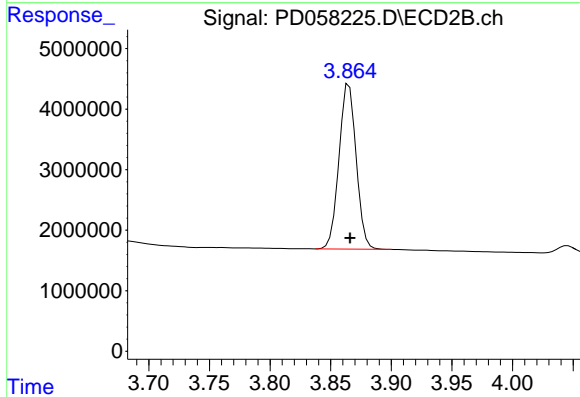
Volume Inj. : 2 µl
 Signal #1 Phase : ZB-MR2 Signal #2 Phase: ZB-MR1
 Signal #1 Info : 30M x 0.32mm x0.2 Signal #2 Info : 30M x 0.32mm x 0.50µm



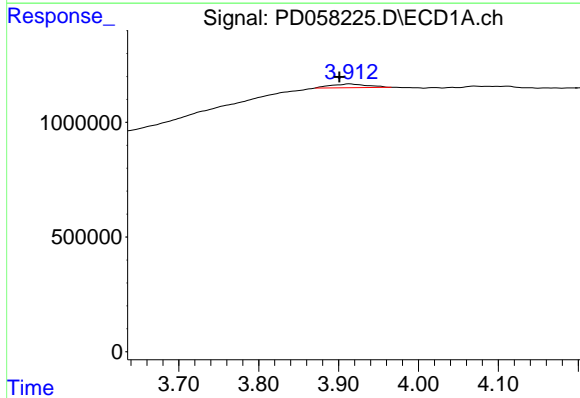


#1 Tetrachloro-m-xylene
 R.T.: 3.209 min
 Delta R.T.: 0.001 min
 Response: 17395088
 Conc: 22.22 ng/ml

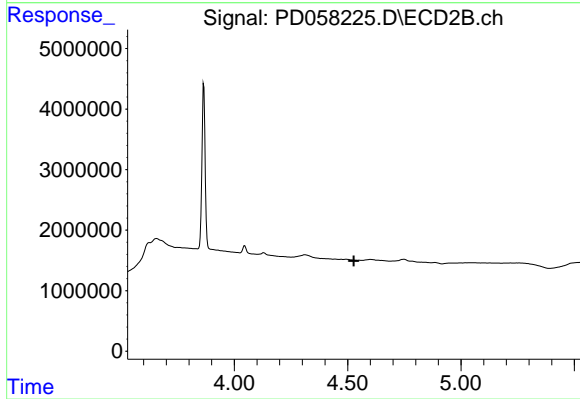
Instrument :
 ECD_D
 ClientSampled :



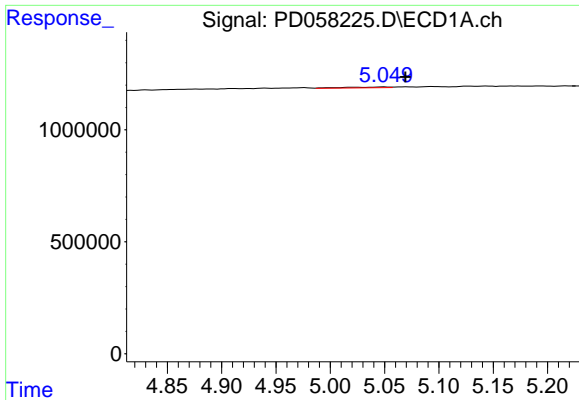
#1 Tetrachloro-m-xylene
 R.T.: 3.865 min
 Delta R.T.: 0.000 min
 Response: 26906169
 Conc: 22.53 ng/ml



#3 gamma-BHC (Lindane)
 R.T.: 3.914 min
 Delta R.T.: 0.013 min
 Response: 532874
 Conc: 0.46 ng/ml

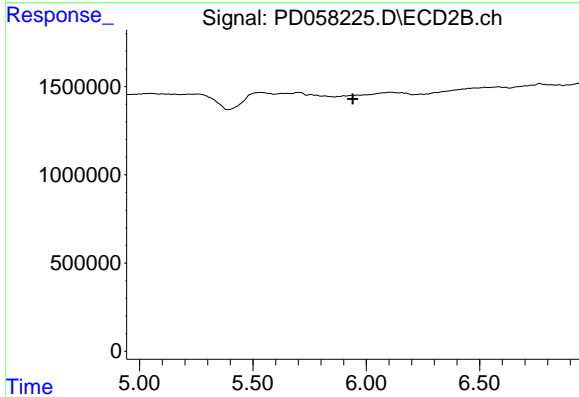


#3 gamma-BHC (Lindane)
 R.T.: 0.000 min
 Exp R.T. : 4.527 min
 Response: 0
 Conc: N.D.

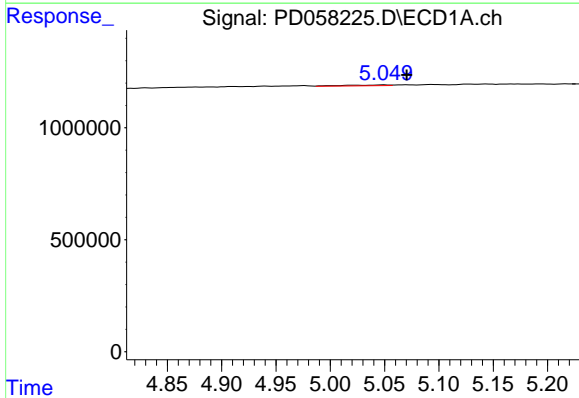


#10 gamma-Chlordane
 R.T.: 5.050 min
 Delta R.T.: -0.019 min
 Response: 103788
 Conc: 0.11 ng/ml

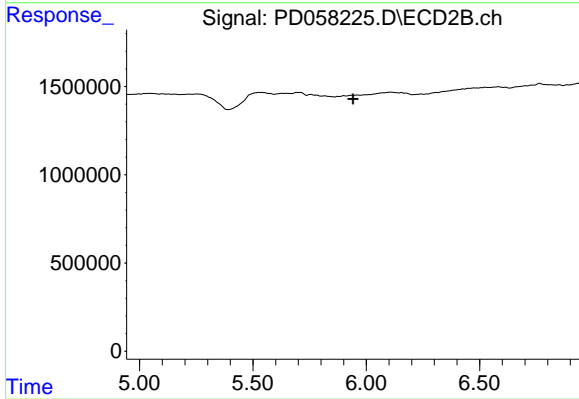
Instrument :
 ECD_D
 ClientSampleId :



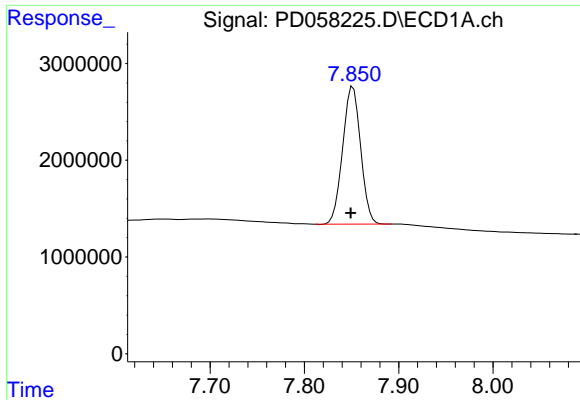
#10 gamma-Chlordane
 R.T.: 0.000 min
 Exp R.T. : 5.940 min
 Response: 0
 Conc: N.D.



#25 Chlordane-3
 R.T.: 5.050 min
 Delta R.T.: -0.020 min
 Response: 103788
 Conc: 1.24 ng/ml



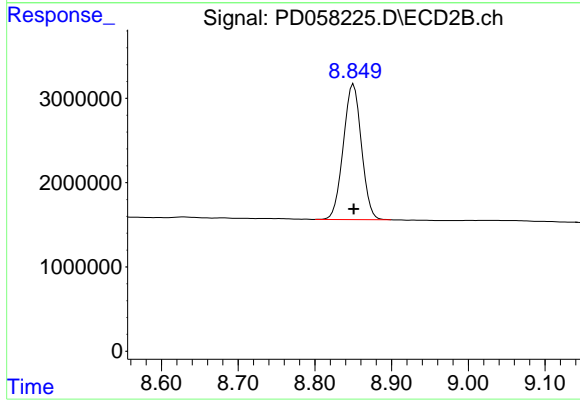
#25 Chlordane-3
 R.T.: 0.000 min
 Exp R.T. : 5.941 min
 Response: 0
 Conc: N.D.



#28 Decachlorobiphenyl

R.T.: 7.852 min
Delta R.T.: 0.002 min
Response: 18853792
Conc: 21.95 ng/ml

Instrument :
ECD_D
ClientSampleId :



#28 Decachlorobiphenyl

R.T.: 8.850 min
Delta R.T.: 0.000 min
Response: 26518092
Conc: 22.14 ng/ml