

Data Path : Z:\pestpcbsrv\HPCHEM1\ECD\_D\Data\PD060221\  
 Data File : PD063349.D  
 Signal(s) : Signal #1: ECD1A.ch Signal #2: ECD2B.ch  
 Acq On : 02 Jun 2021 10:43  
 Operator : AR\AJ  
 Sample : PSTDICC075  
 Misc :  
 ALS Vial : 6 Sample Multiplier: 1

Instrument :  
 ECD\_D  
 ClientSampled :

Integration File signal 1: autoint1.e  
 Integration File signal 2: autoint2.e  
 Quant Time: Jun 02 11:26:25 2021  
 Quant Method : Z:\pestpcbsrv\HPCHEM1\ECD\_D\Method\PD060221.M  
 Quant Title : GC Extractables  
 QLast Update : Wed Jun 02 11:24:38 2021  
 Response via : Initial Calibration  
 Integrator: ChemStation

Volume Inj. : 2 µl  
 Signal #1 Phase : ZB-MR2 Signal #2 Phase: ZB-MR1  
 Signal #1 Info : 30M x 0.32mm x0.2 Signal #2 Info : 30M x 0.32mm x 0.50µm

	Compound	RT#1	RT#2	Resp#1	Resp#2	ng/ml	ng/ml
-----							
System Monitoring Compounds							
1)	SA Tetrachlo...	3.440	3.970	100.6E6	955.3E6	73.713	71.859
28)	SA Decachlor...	8.194	9.023	111.6E6	978.9E6	71.198	78.681
Target Compounds							
2)	A alpha-BHC	3.875	4.358	159.1E6	1529.5E6	75.037	74.430
3)	MA gamma-BHC...	4.159	4.642	147.0E6	1398.8E6	75.023	74.542
4)	MA Heptachlor	4.459	5.150	145.7E6	1386.9E6	74.509	74.194
5)	MB Aldrin	4.707	5.454	142.5E6	1399.6E6	74.577	73.867
6)	B beta-BHC	4.410	4.813	60485885	580.5E6	73.090	74.733
7)	B delta-BHC	4.613	5.029	149.3E6	1348.3E6	75.022	69.396
8)	B Heptachlo...	5.150	5.840	129.3E6	1250.3E6	73.616	71.649
9)	A Endosulfan I	5.489	6.196	121.9E6	1201.9E6	74.113	72.892
10)	B gamma-Chl...	5.377	6.074	133.4E6	1316.3E6	74.586	73.457
11)	B alpha-Chl...	5.436	6.146	130.6E6	1248.8E6	74.193	72.227
12)	B 4,4'-DDE	5.599	6.303	130.7E6	1291.6E6	74.723	72.354
13)	MA Dieldrin	5.732	6.453	132.4E6	1296.4E6	74.784	73.390
14)	MA Endrin	5.990	6.670	116.3E6	1094.4E6	74.606	73.165
15)	B Endosulfa...	6.262	6.880	99848818	1042.5E6	68.188	72.518
16)	A 4,4'-DDD	6.116	6.793	110.5E6	1073.7E6	74.797	73.649
17)	MA 4,4'-DDT	6.356	7.091	112.5E6	1109.4E6	75.900	74.822
18)	B Endrin al...	6.431	7.003	86322633	850.7E6	73.576	73.229
19)	B Endosulfa...	6.645	7.227	85499512	1085.6E6	59.812	72.983
20)	A Methoxychlor	6.903	7.550	57596767	536.6E6	72.827	72.614
21)	B Endrin ke...	7.137	7.697	131.2E6	1097.0E6	73.237	74.687
22)	Mirex	7.324	8.150	77135932	688.9E6	61.430	70.841

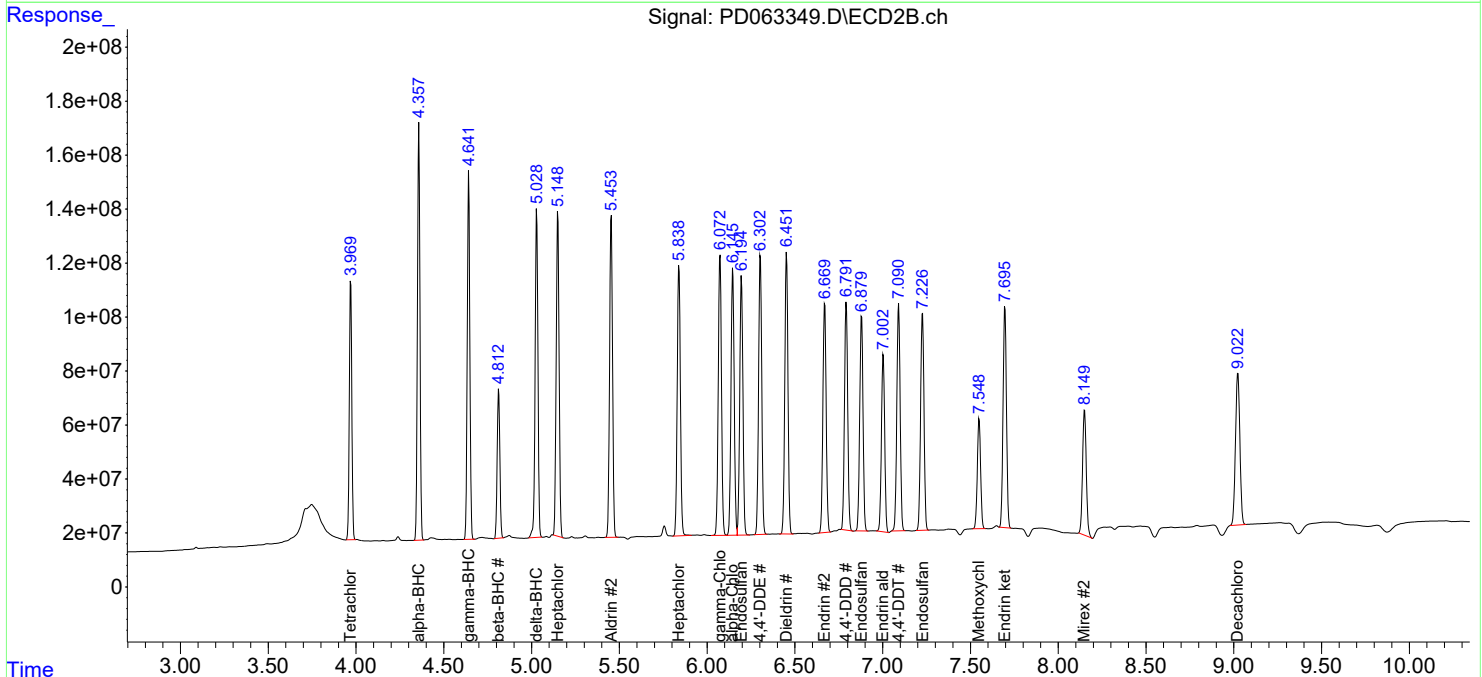
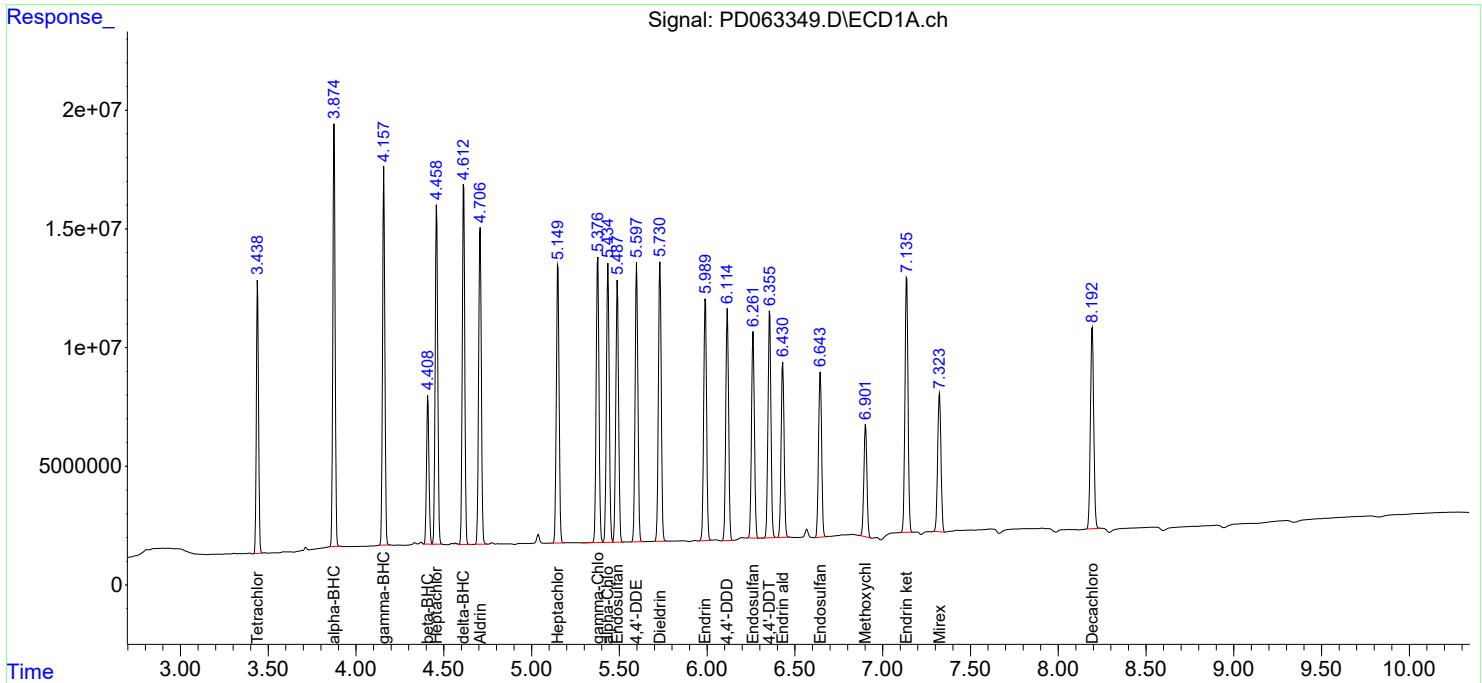
(f)=RT Delta > 1/2 Window (#)=Amounts differ by > 25% (m)=manual int.

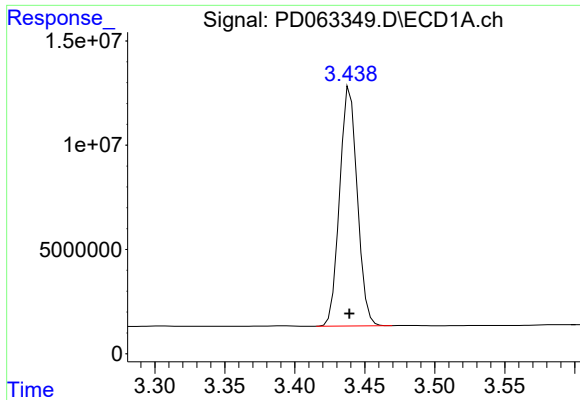
Data Path : Z:\pestpcbsrv\HPCHEM1\ECD\_D\Data\PD060221\  
 Data File : PD063349.D  
 Signal(s) : Signal #1: ECD1A.ch Signal #2: ECD2B.ch  
 Acq On : 02 Jun 2021 10:43  
 Operator : AR\AJ  
 Sample : PSTDICC075  
 Misc :  
 ALS Vial : 6 Sample Multiplier: 1

Instrument :  
 ECD\_D  
 ClientSampled :

Integration File signal 1: autoint1.e  
 Integration File signal 2: autoint2.e  
 Quant Time: Jun 02 11:26:25 2021  
 Quant Method : Z:\pestpcbsrv\HPCHEM1\ECD\_D\Method\PD060221.M  
 Quant Title : GC Extractables  
 QLast Update : Wed Jun 02 11:24:38 2021  
 Response via : Initial Calibration  
 Integrator: ChemStation

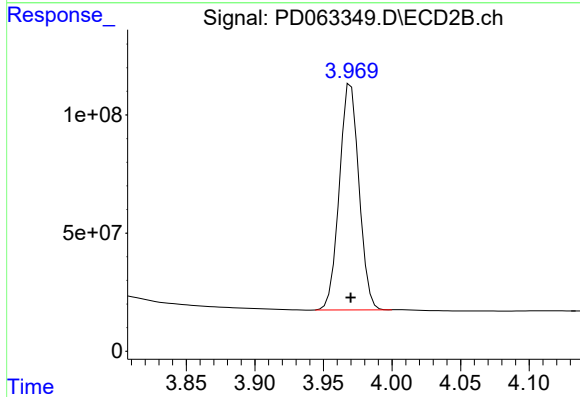
Volume Inj. : 2 µl  
 Signal #1 Phase : ZB-MR2 Signal #2 Phase: ZB-MR1  
 Signal #1 Info : 30M x 0.32mm x0.2 Signal #2 Info : 30M x 0.32mm x 0.50µm



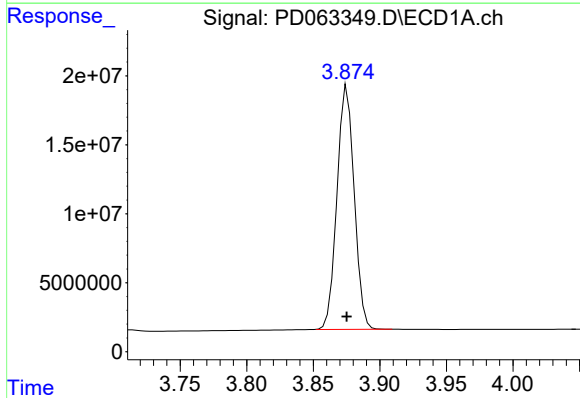


#1 Tetrachloro-m-xylene  
 R.T.: 3.440 min  
 Delta R.T.: 0.000 min  
 Response: 100588087  
 Conc: 73.71 ng/ml

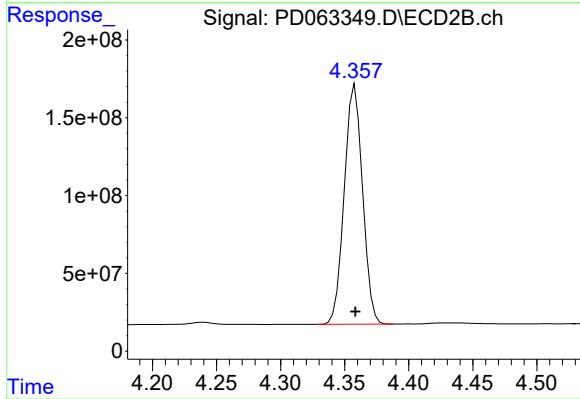
Instrument :  
 ECD\_D  
 ClientSampleId :



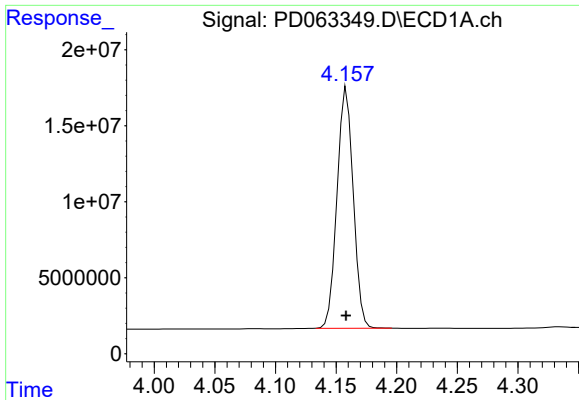
#1 Tetrachloro-m-xylene  
 R.T.: 3.970 min  
 Delta R.T.: 0.000 min  
 Response: 955333996  
 Conc: 71.86 ng/ml



#2 alpha-BHC  
 R.T.: 3.875 min  
 Delta R.T.: 0.000 min  
 Response: 159083336  
 Conc: 75.04 ng/ml



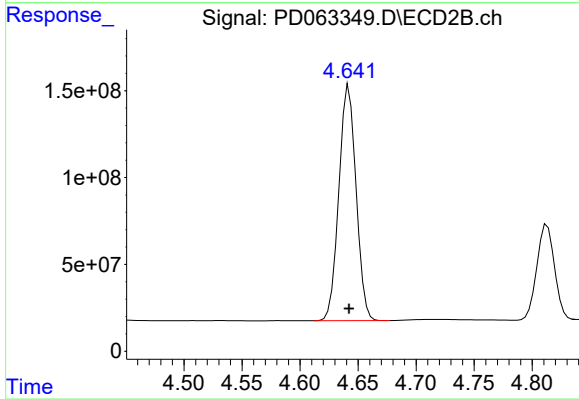
#2 alpha-BHC  
 R.T.: 4.358 min  
 Delta R.T.: 0.000 min  
 Response: 1529518027  
 Conc: 74.43 ng/ml



#3 gamma-BHC (Lindane)

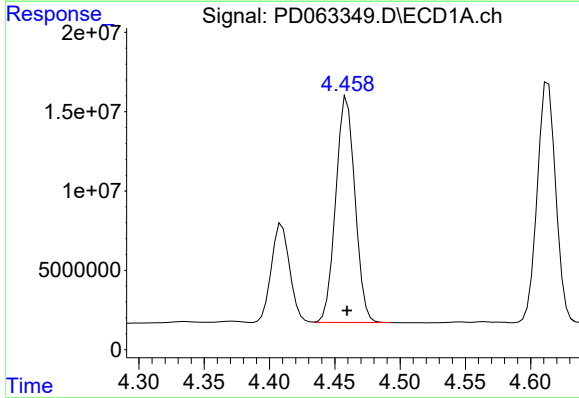
R.T.: 4.159 min  
 Delta R.T.: 0.000 min  
 Response: 147043923  
 Conc: 75.02 ng/ml

Instrument :  
 ECD\_D  
 ClientSampled :



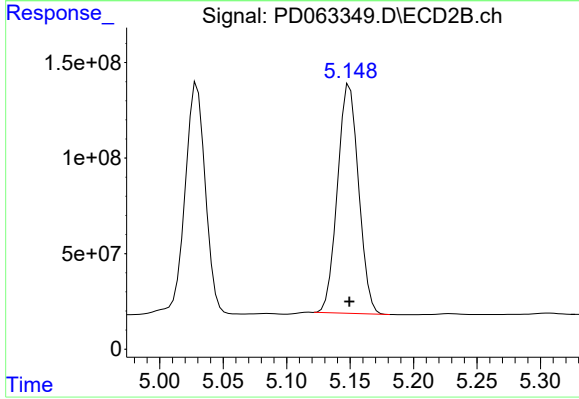
#3 gamma-BHC (Lindane)

R.T.: 4.642 min  
 Delta R.T.: 0.000 min  
 Response: 1398799095  
 Conc: 74.54 ng/ml



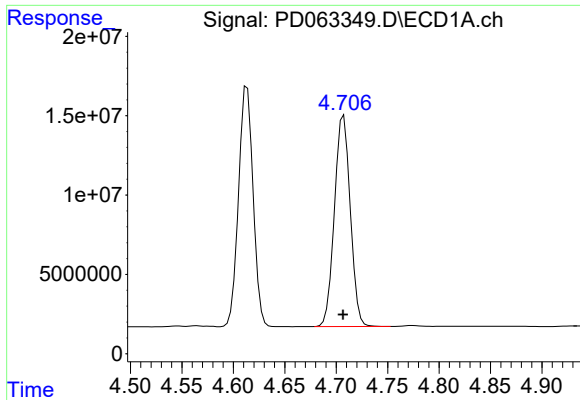
#4 Heptachlor

R.T.: 4.459 min  
 Delta R.T.: 0.000 min  
 Response: 145744614  
 Conc: 74.51 ng/ml



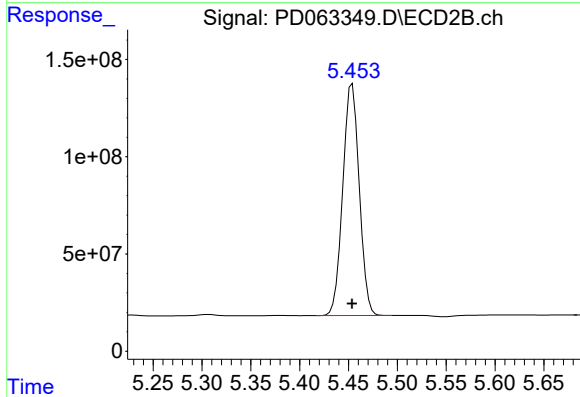
#4 Heptachlor

R.T.: 5.150 min  
 Delta R.T.: 0.000 min  
 Response: 1386854860  
 Conc: 74.19 ng/ml

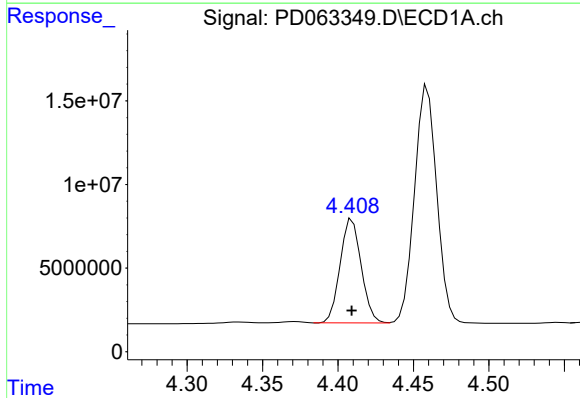


#5 Aldrin  
 R.T.: 4.707 min  
 Delta R.T.: 0.000 min  
 Response: 142509208  
 Conc: 74.58 ng/ml

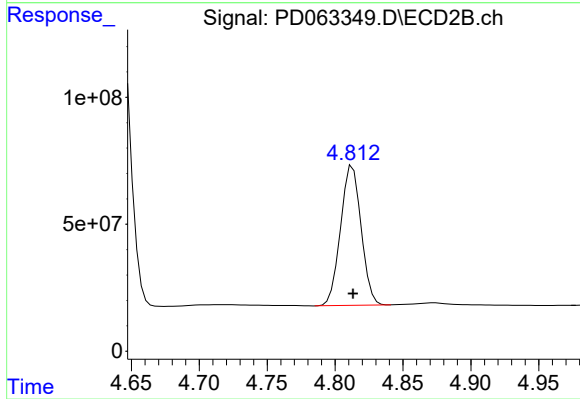
Instrument :  
 ECD\_D  
 ClientSampled :



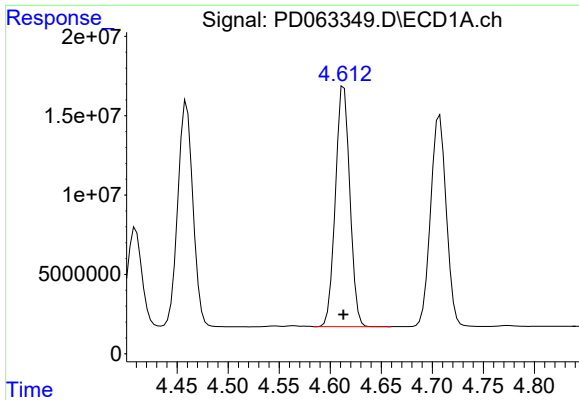
#5 Aldrin  
 R.T.: 5.454 min  
 Delta R.T.: 0.000 min  
 Response: 1399582744  
 Conc: 73.87 ng/ml



#6 beta-BHC  
 R.T.: 4.410 min  
 Delta R.T.: 0.000 min  
 Response: 60485885  
 Conc: 73.09 ng/ml

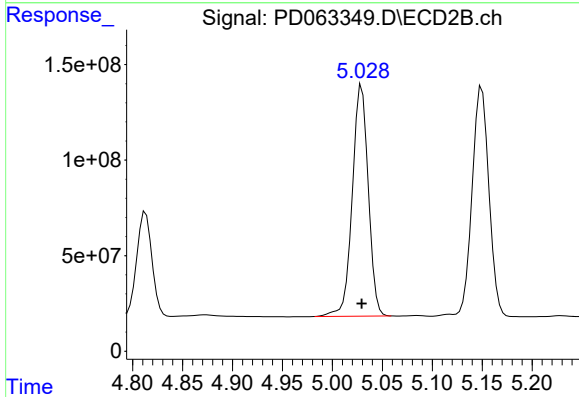


#6 beta-BHC  
 R.T.: 4.813 min  
 Delta R.T.: 0.000 min  
 Response: 580514014  
 Conc: 74.73 ng/ml

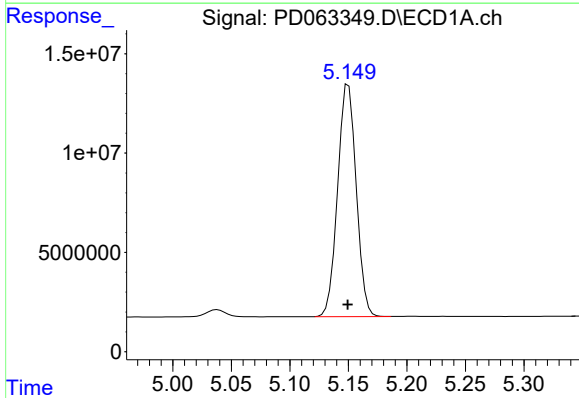


#7 delta-BHC  
 R.T.: 4.613 min  
 Delta R.T.: 0.000 min  
 Response: 149294180  
 Conc: 75.02 ng/ml

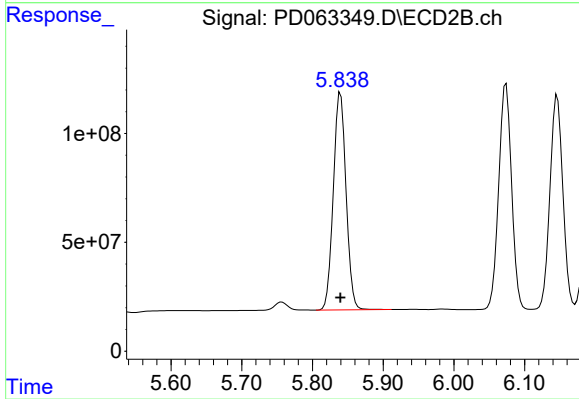
Instrument :  
 ECD\_D  
 ClientSampled :



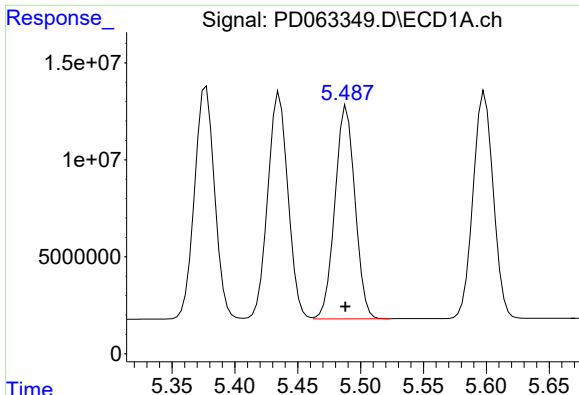
#7 delta-BHC  
 R.T.: 5.029 min  
 Delta R.T.: 0.000 min  
 Response: 1348256970  
 Conc: 69.40 ng/ml



#8 Heptachlor epoxide  
 R.T.: 5.150 min  
 Delta R.T.: 0.000 min  
 Response: 129266667  
 Conc: 73.62 ng/ml



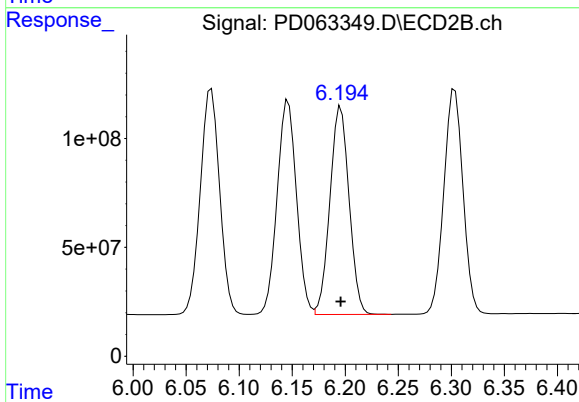
#8 Heptachlor epoxide  
 R.T.: 5.840 min  
 Delta R.T.: 0.000 min  
 Response: 1250287975  
 Conc: 71.65 ng/ml



#9 Endosulfan I

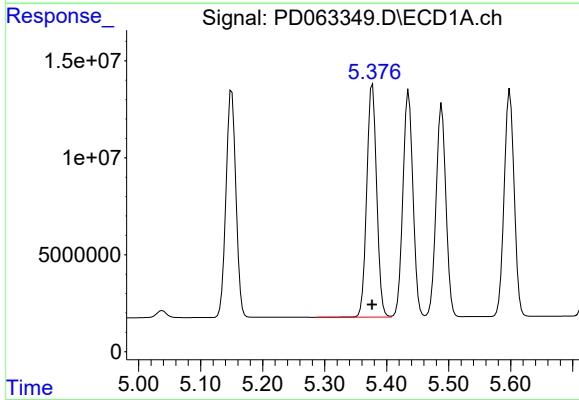
R.T.: 5.489 min  
 Delta R.T.: 0.001 min  
 Response: 121936316  
 Conc: 74.11 ng/ml

Instrument :  
 ECD\_D  
 ClientSampled :



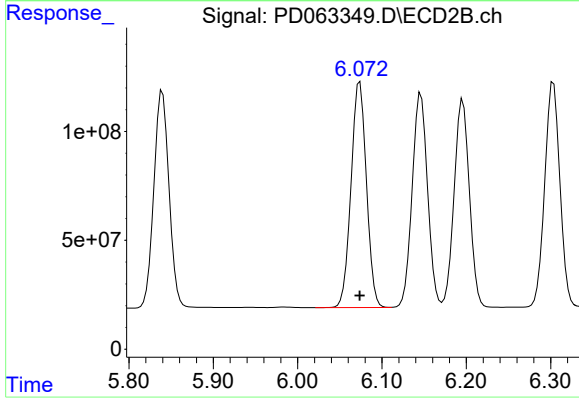
#9 Endosulfan I

R.T.: 6.196 min  
 Delta R.T.: 0.000 min  
 Response: 1201903299  
 Conc: 72.89 ng/ml



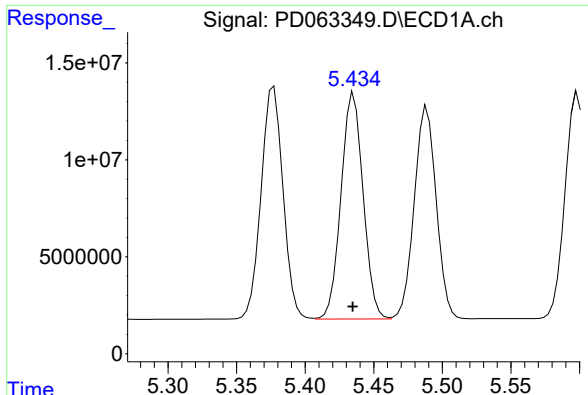
#10 gamma-Chlordane

R.T.: 5.377 min  
 Delta R.T.: 0.000 min  
 Response: 133443843  
 Conc: 74.59 ng/ml



#10 gamma-Chlordane

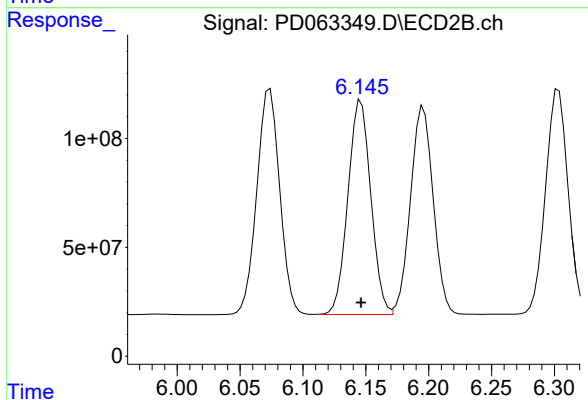
R.T.: 6.074 min  
 Delta R.T.: 0.000 min  
 Response: 1316323219  
 Conc: 73.46 ng/ml



#11 alpha-Chlordane

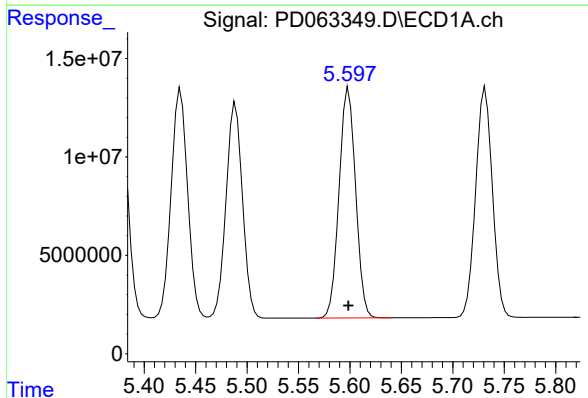
R.T.: 5.436 min  
Delta R.T.: 0.000 min  
Response: 130605794  
Conc: 74.19 ng/ml

Instrument :  
ECD\_D  
ClientSampleId :



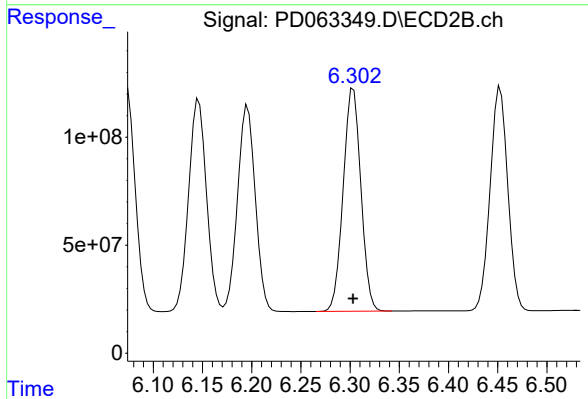
#11 alpha-Chlordane

R.T.: 6.146 min  
Delta R.T.: 0.000 min  
Response: 1248815850  
Conc: 72.23 ng/ml



#12 4,4'-DDE

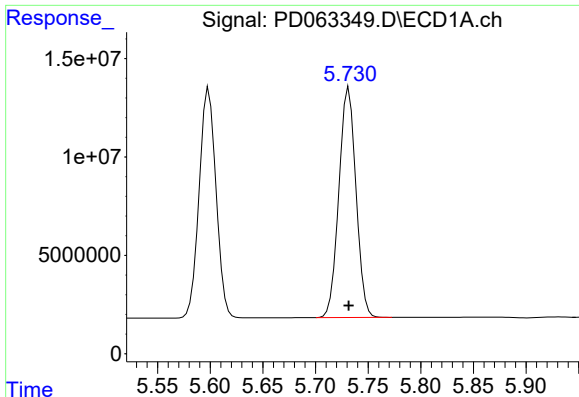
R.T.: 5.599 min  
Delta R.T.: 0.000 min  
Response: 130691831  
Conc: 74.72 ng/ml



#12 4,4'-DDE

R.T.: 6.303 min  
Delta R.T.: 0.000 min  
Response: 1291626314  
Conc: 72.35 ng/ml

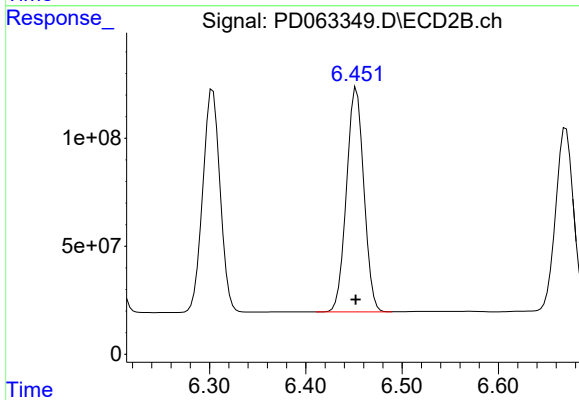




#13 Dieldrin

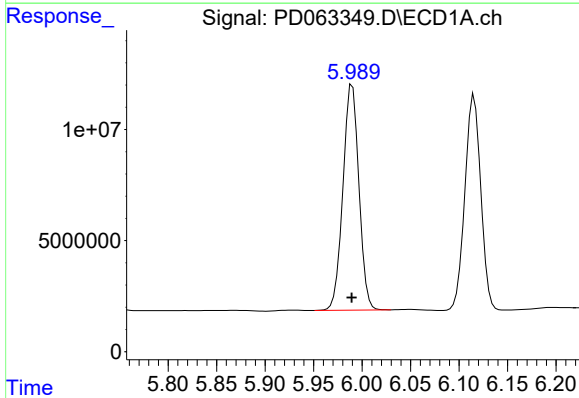
R.T.: 5.732 min  
 Delta R.T.: 0.000 min  
 Response: 132435903  
 Conc: 74.78 ng/ml

Instrument :  
 ECD\_D  
 ClientSampled :



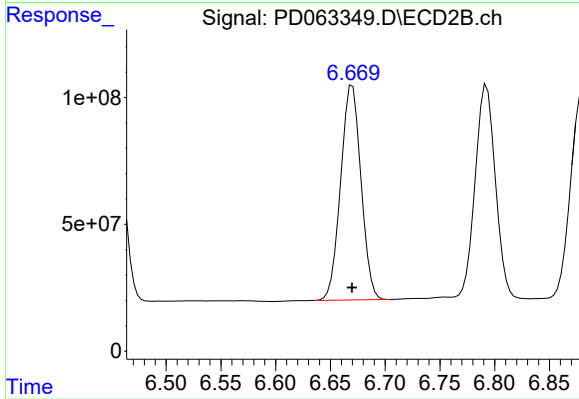
#13 Dieldrin

R.T.: 6.453 min  
 Delta R.T.: 0.000 min  
 Response: 1296413738  
 Conc: 73.39 ng/ml



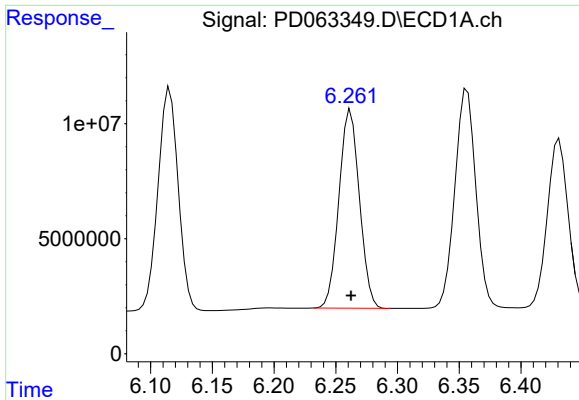
#14 Endrin

R.T.: 5.990 min  
 Delta R.T.: 0.000 min  
 Response: 116309700  
 Conc: 74.61 ng/ml



#14 Endrin

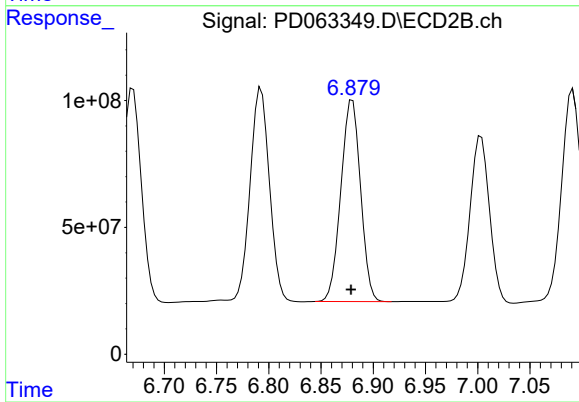
R.T.: 6.670 min  
 Delta R.T.: 0.000 min  
 Response: 1094377019  
 Conc: 73.16 ng/ml



#15 Endosulfan II

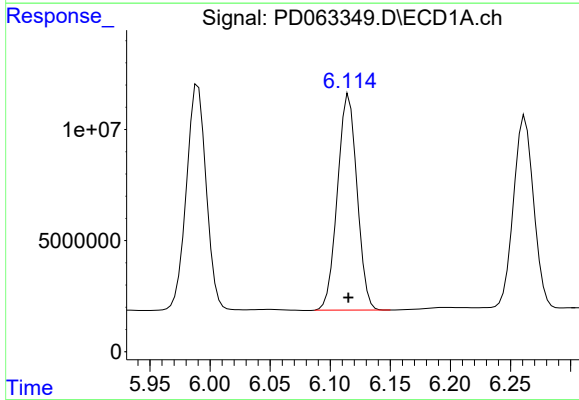
R.T.: 6.262 min  
Delta R.T.: 0.000 min  
Response: 99848818  
Conc: 68.19 ng/ml

Instrument :  
ECD\_D  
ClientSampleId :



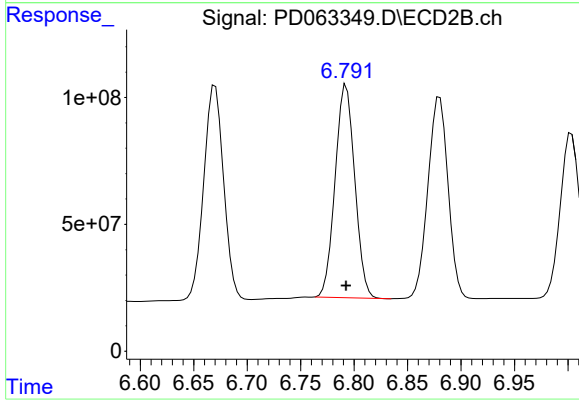
#15 Endosulfan II

R.T.: 6.880 min  
Delta R.T.: 0.001 min  
Response: 1042501430  
Conc: 72.52 ng/ml



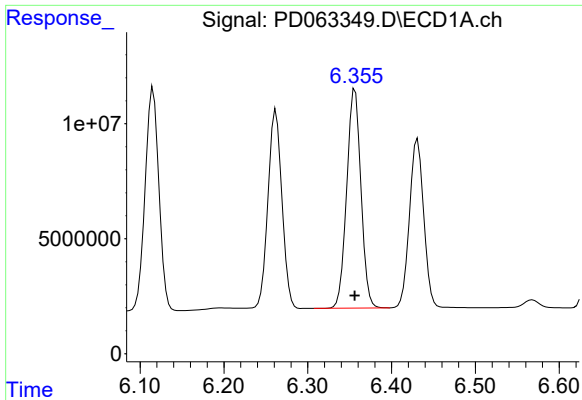
#16 4,4'-DDD

R.T.: 6.116 min  
Delta R.T.: 0.000 min  
Response: 110462588  
Conc: 74.80 ng/ml



#16 4,4'-DDD

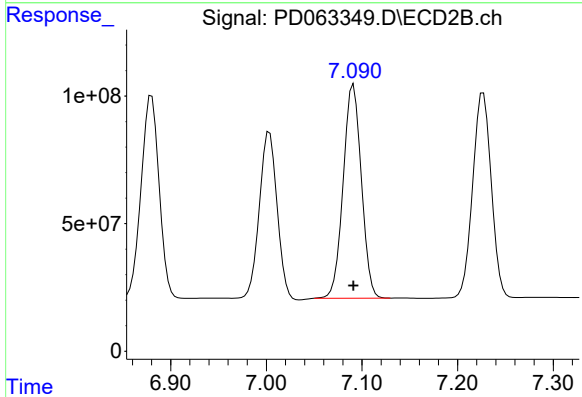
R.T.: 6.793 min  
Delta R.T.: 0.000 min  
Response: 1073749055  
Conc: 73.65 ng/ml



#17 4,4'-DDT

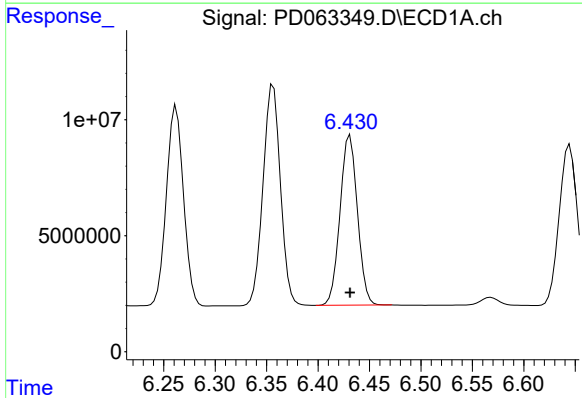
R.T.: 6.356 min  
 Delta R.T.: 0.000 min  
 Response: 112456390  
 Conc: 75.90 ng/ml

Instrument :  
 ECD\_D  
 ClientSampled :



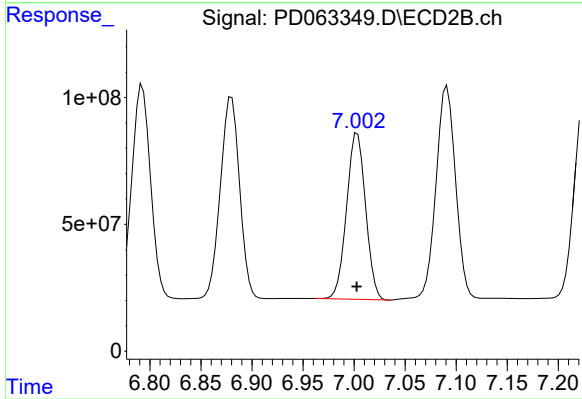
#17 4,4'-DDT

R.T.: 7.091 min  
 Delta R.T.: 0.000 min  
 Response: 1109367967  
 Conc: 74.82 ng/ml



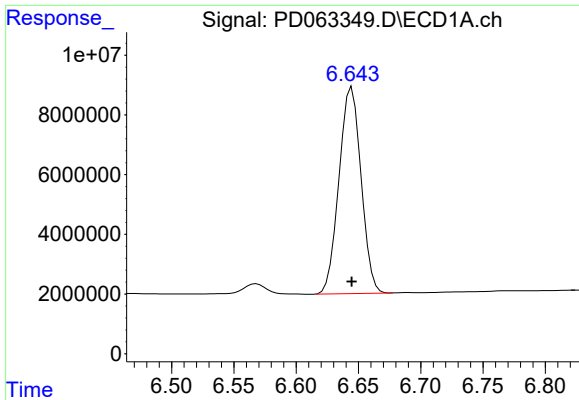
#18 Endrin aldehyde

R.T.: 6.431 min  
 Delta R.T.: 0.000 min  
 Response: 86322633  
 Conc: 73.58 ng/ml



#18 Endrin aldehyde

R.T.: 7.003 min  
 Delta R.T.: 0.000 min  
 Response: 850708898  
 Conc: 73.23 ng/ml



#19 Endosulfan Sulfate

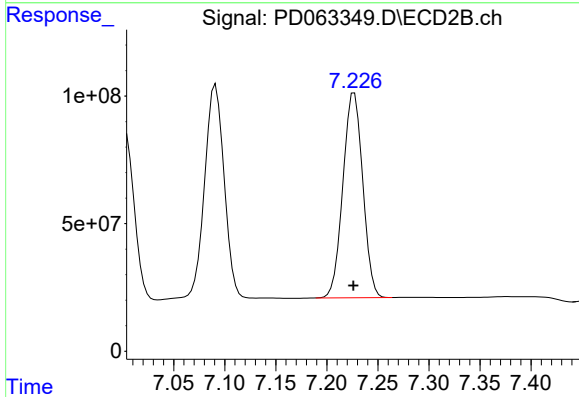
R.T.: 6.645 min

Delta R.T.: 0.000 min

Response: 85499512

Conc: 59.81 ng/ml

Instrument :  
ECD\_D  
ClientSampled :



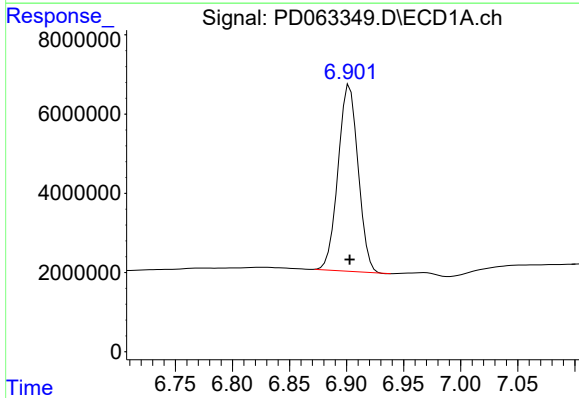
#19 Endosulfan Sulfate

R.T.: 7.227 min

Delta R.T.: 0.000 min

Response: 1085617850

Conc: 72.98 ng/ml



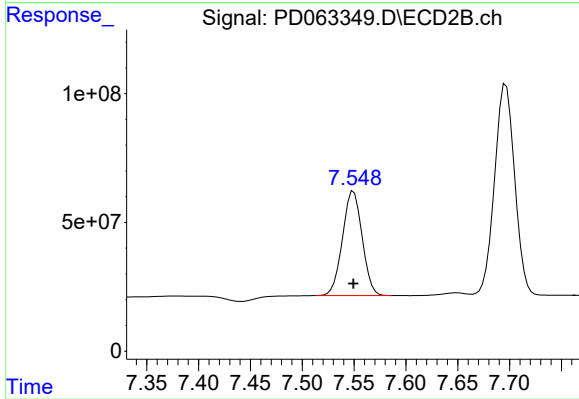
#20 Methoxychlor

R.T.: 6.903 min

Delta R.T.: 0.000 min

Response: 57596767

Conc: 72.83 ng/ml



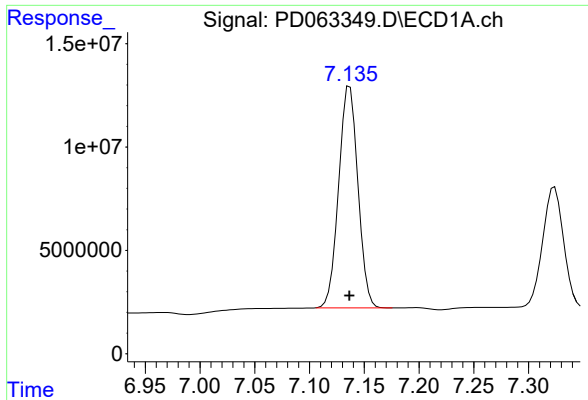
#20 Methoxychlor

R.T.: 7.550 min

Delta R.T.: 0.000 min

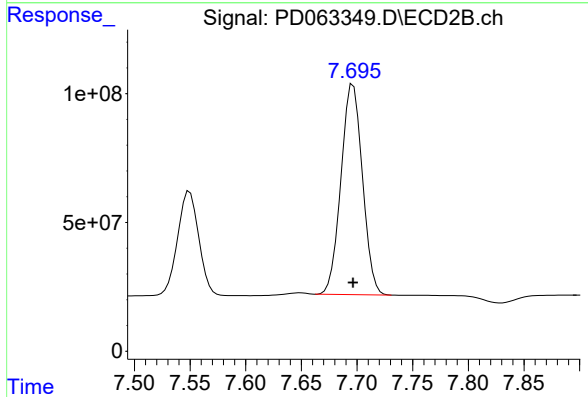
Response: 536559979

Conc: 72.61 ng/ml

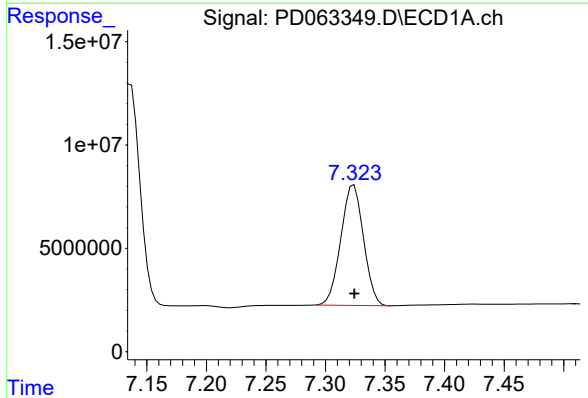


#21 Endrin ketone  
 R.T.: 7.137 min  
 Delta R.T.: 0.000 min  
 Response: 131159530  
 Conc: 73.24 ng/ml

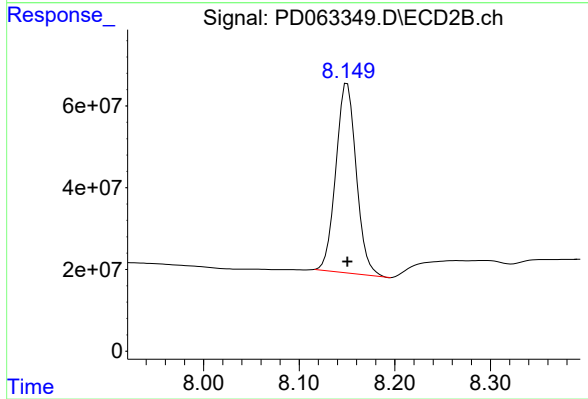
Instrument :  
 ECD\_D  
 ClientSampled :



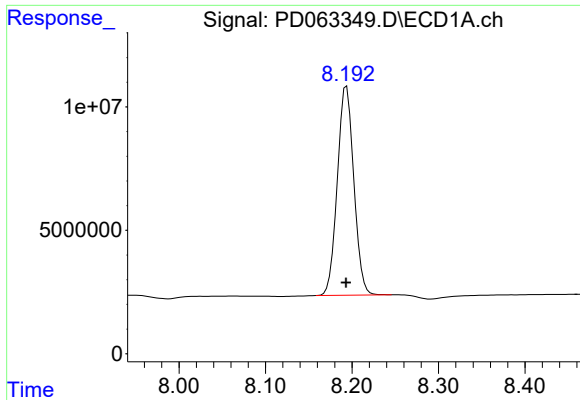
#21 Endrin ketone  
 R.T.: 7.697 min  
 Delta R.T.: 0.000 min  
 Response: 1096953904  
 Conc: 74.69 ng/ml



#22 Mirex  
 R.T.: 7.324 min  
 Delta R.T.: 0.000 min  
 Response: 77135932  
 Conc: 61.43 ng/ml



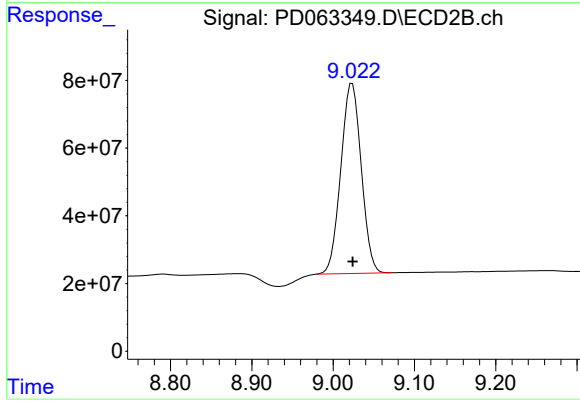
#22 Mirex  
 R.T.: 8.150 min  
 Delta R.T.: 0.000 min  
 Response: 688886663  
 Conc: 70.84 ng/ml



#28 Decachlorobiphenyl

R.T.: 8.194 min  
Delta R.T.: 0.000 min  
Response: 111635459  
Conc: 71.20 ng/ml

Instrument :  
ECD\_D  
ClientSampleId :



#28 Decachlorobiphenyl

R.T.: 9.023 min  
Delta R.T.: 0.000 min  
Response: 978918804  
Conc: 78.68 ng/ml