

Data Path : Z:\pestpcbsrv\HPCHEM1\ECD_D\Data\PD060221\
 Data File : PD063360.D
 Signal(s) : Signal #1: ECD1A.ch Signal #2: ECD2B.ch
 Acq On : 02 Jun 2021 13:20
 Operator : AR\AJ
 Sample : PTOXICC500
 Misc :
 ALS Vial : 17 Sample Multiplier: 1

Instrument :
 ECD_D
 ClientSampleId :
 PTOXICC500

Integration File signal 1: autoint1.e
 Integration File signal 2: autoint2.e
 Quant Time: Jun 03 01:15:35 2021
 Quant Method : Z:\pestpcbsrv\HPCHEM1\ECD_D\Method\DTX060221.M
 Quant Title : GC Extractables
 QLast Update : Thu Jun 03 01:14:48 2021
 Response via : Initial Calibration
 Integrator: ChemStation

Volume Inj. : 1 µl
 Signal #1 Phase : ZB-MR2 Signal #2 Phase: ZB-MR1
 Signal #1 Info : 30M x 0.32mm x0.2 Signal #2 Info : 30M x 0.32mm x 0.50µm

Compound	RT#1	RT#2	Resp#1	Resp#2	ng/ml	ng/ml

System Monitoring Compounds						
1) SA Tetrachlo...	3.439	3.970	67538474	661.7E6	50.000	50.000
7) SA Decachlor...	8.194	9.024	78458889	694.4E6	50.000	50.000
Target Compounds						
2) Toxaphene-1	5.694	6.544	5192435	80022746	500.000	500.000
3) Toxaphene-2	6.178	7.050	5799457	67738615	500.000	500.000
4) Toxaphene-3	6.297	7.127	13272941	199.1E6	500.000	500.000
5) Toxaphene-4	6.543	7.211	13772798	125.9E6	500.000	500.000
6) Toxaphene-5	7.029	7.626	15691063	88282720	500.000	500.000

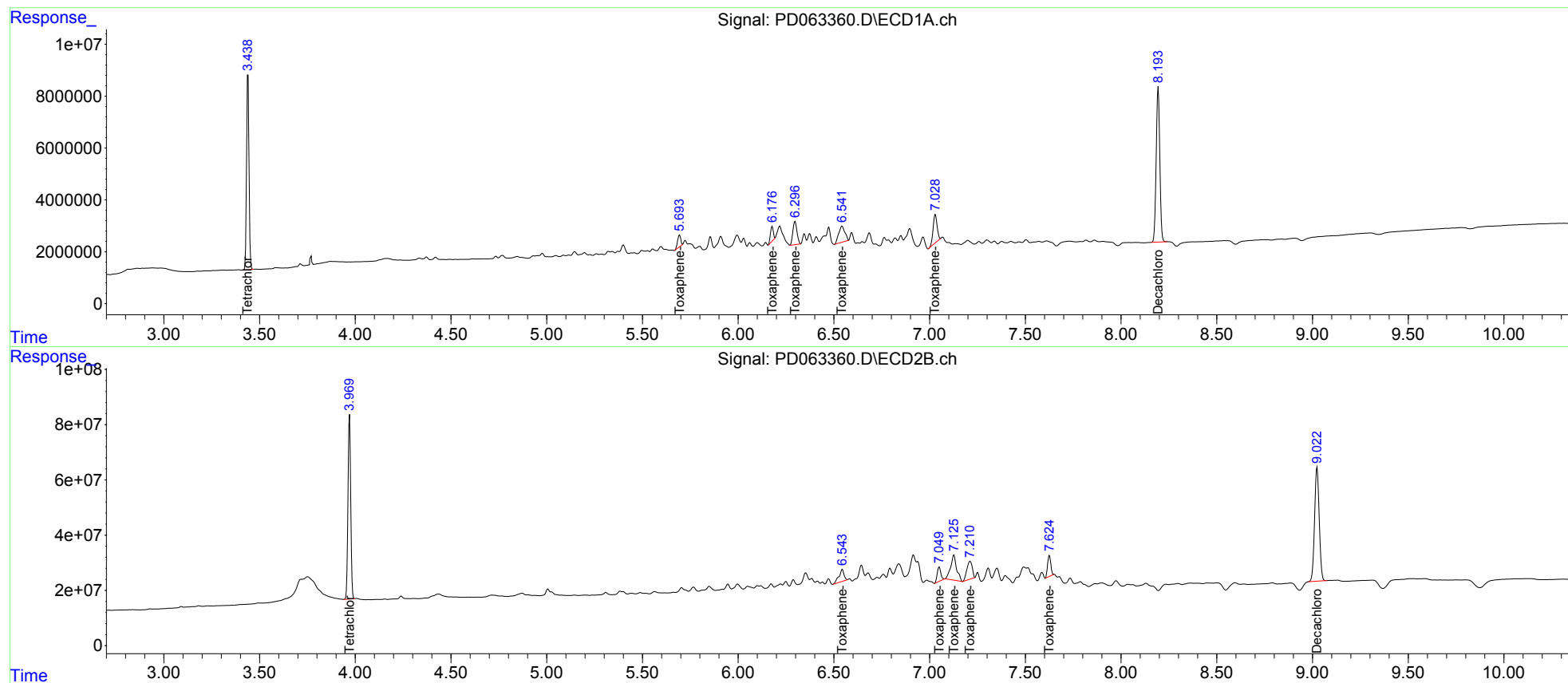
(f)=RT Delta > 1/2 Window (#)=Amounts differ by > 25% (m)=manual int.

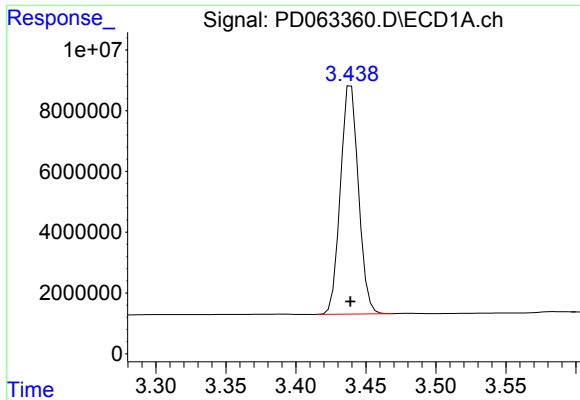
Data Path : Z:\pestpcbsrv\HPCHEM1\ECD_D\Data\PD060221\
Data File : PD063360.D
Signal(s) : Signal #1: ECD1A.ch Signal #2: ECD2B.ch
Acq On : 02 Jun 2021 13:20
Operator : AR\AJ
Sample : PTOXICC500
Misc :
ALS Vial : 17 Sample Multiplier: 1

Instrument :
ECD_D
ClientSampleId :
PTOXICC500

Integration File signal 1: autoint1.e
Integration File signal 2: autoint2.e
Quant Time: Jun 03 01:15:35 2021
Quant Method : Z:\pestpcbsrv\HPCHEM1\ECD_D\Method\DTX060221.M
Quant Title : GC Extractables
QLast Update : Thu Jun 03 01:14:48 2021
Response via : Initial Calibration
Integrator: ChemStation

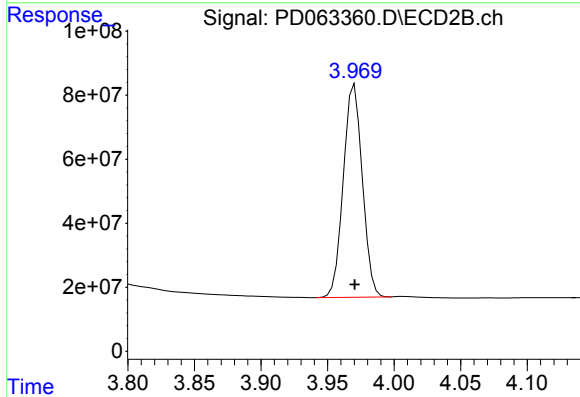
Volume Inj. : 1 µl
Signal #1 Phase : ZB-MR2 Signal #2 Phase: ZB-MR1
Signal #1 Info : 30M x 0.32mm x 0.2 Signal #2 Info : 30M x 0.32mm x 0.50µm



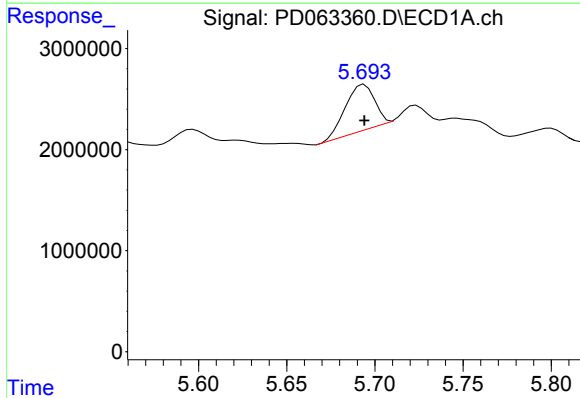


#1 Tetrachloro-m-xylene
 R.T.: 3.439 min
 Delta R.T.: 0.000 min
 Response: 67538474
 Conc: 50.00 ng/ml

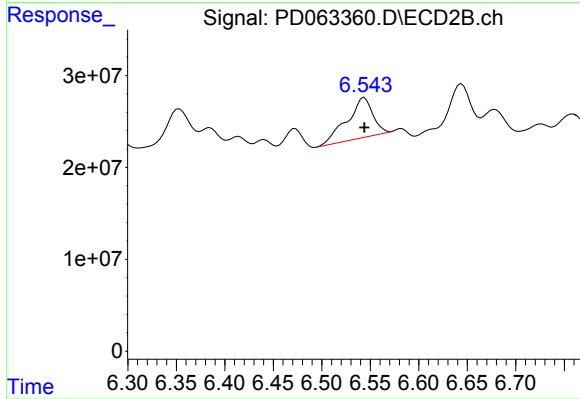
Instrument :
 ECD_D
 ClientSampleId :
 PTOXICC500



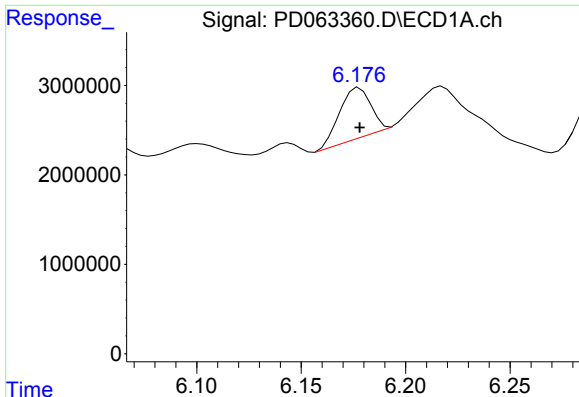
#1 Tetrachloro-m-xylene
 R.T.: 3.970 min
 Delta R.T.: 0.000 min
 Response: 661709208
 Conc: 50.00 ng/ml



#2 Toxaphene-1
 R.T.: 5.694 min
 Delta R.T.: 0.000 min
 Response: 5192435
 Conc: 500.00 ng/ml



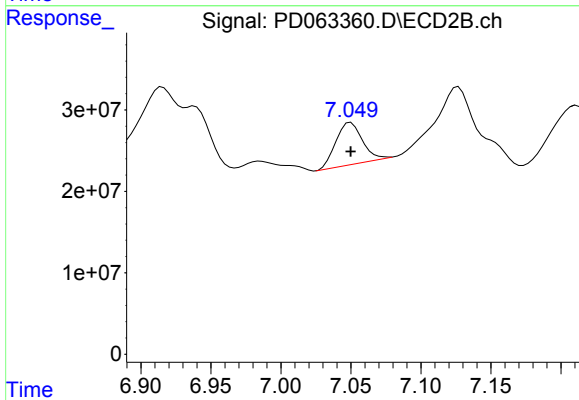
#2 Toxaphene-1
 R.T.: 6.544 min
 Delta R.T.: 0.000 min
 Response: 80022746
 Conc: 500.00 ng/ml



#3 Toxaphene-2

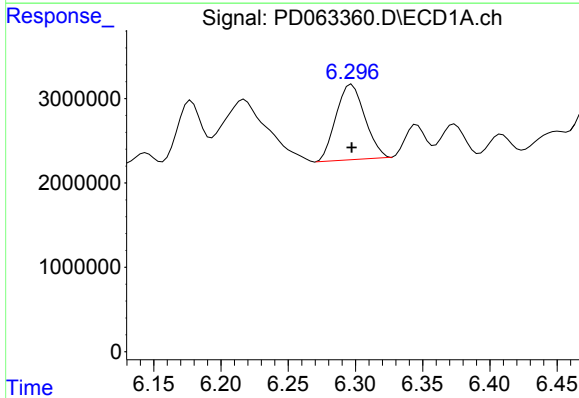
R.T.: 6.178 min
 Delta R.T.: 0.000 min
 Response: 5799457
 Conc: 500.00 ng/ml

Instrument :
 ECD_D
 ClientSampleId :
 PTOXICC500



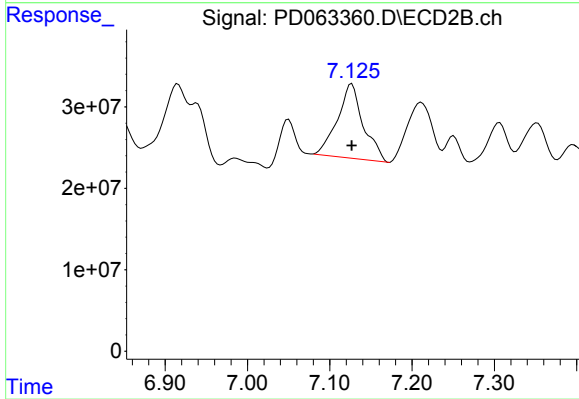
#3 Toxaphene-2

R.T.: 7.050 min
 Delta R.T.: 0.000 min
 Response: 67738615
 Conc: 500.00 ng/ml



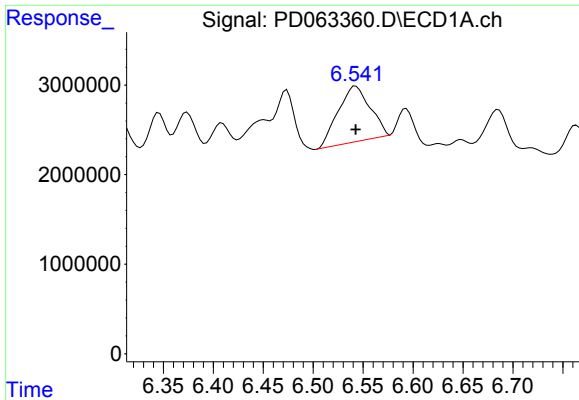
#4 Toxaphene-3

R.T.: 6.297 min
 Delta R.T.: 0.000 min
 Response: 13272941
 Conc: 500.00 ng/ml



#4 Toxaphene-3

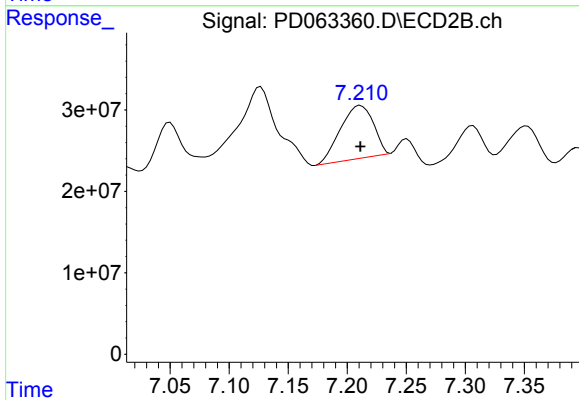
R.T.: 7.127 min
 Delta R.T.: 0.000 min
 Response: 199084098
 Conc: 500.00 ng/ml



#5 Toxaphene-4

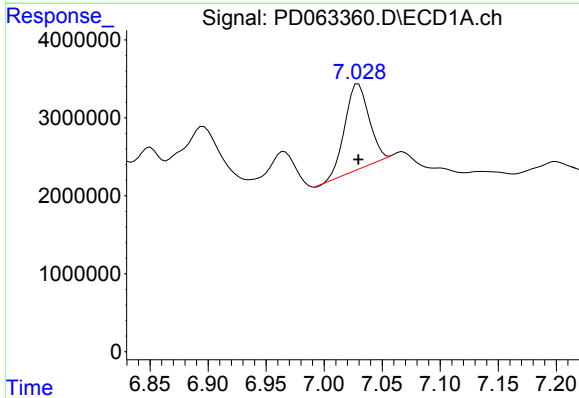
R.T.: 6.543 min
 Delta R.T.: 0.000 min
 Response: 13772798
 Conc: 500.00 ng/ml

Instrument :
 ECD_D
 ClientSampleId :
 PTOXICC500



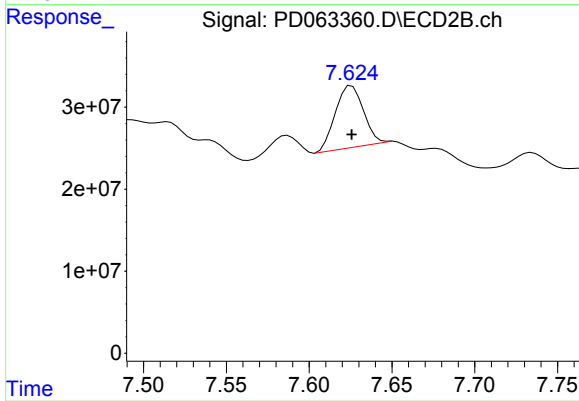
#5 Toxaphene-4

R.T.: 7.211 min
 Delta R.T.: 0.000 min
 Response: 125914375
 Conc: 500.00 ng/ml



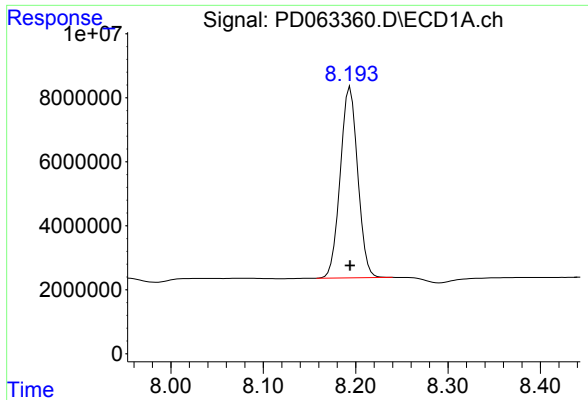
#6 Toxaphene-5

R.T.: 7.029 min
 Delta R.T.: 0.000 min
 Response: 15691063
 Conc: 500.00 ng/ml



#6 Toxaphene-5

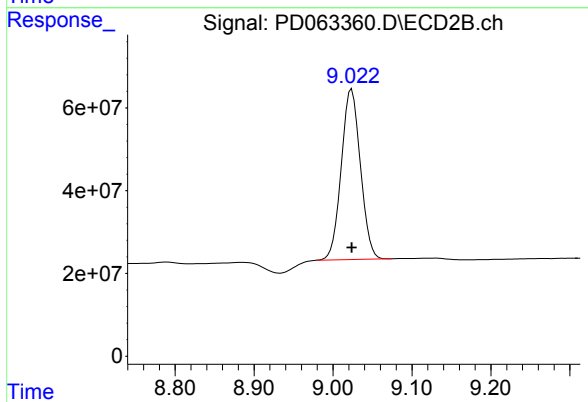
R.T.: 7.626 min
 Delta R.T.: 0.000 min
 Response: 88282720
 Conc: 500.00 ng/ml



#7 Decachlorobiphenyl

R.T.: 8.194 min
Delta R.T.: 0.000 min
Response: 78458889
Conc: 50.00 ng/ml

Instrument :
ECD_D
ClientSampled :
PTOXICC500



#7 Decachlorobiphenyl

R.T.: 9.024 min
Delta R.T.: 0.000 min
Response: 694369689
Conc: 50.00 ng/ml