

Data Path : Z:\pestpcbsrv\HPCHEM1\ECD_D\Data\PD060221\
 Data File : PD063361.D
 Signal(s) : Signal #1: ECD1A.ch Signal #2: ECD2B.ch
 Acq On : 02 Jun 2021 13:34
 Operator : AR\AJ
 Sample : PTOXICC250
 Misc :
 ALS Vial : 18 Sample Multiplier: 1

Instrument :
 ECD_D
 ClientSampleId :
 PTOXICC250

Integration File signal 1: autoint1.e
 Integration File signal 2: autoint2.e
 Quant Time: Jun 03 01:17:23 2021
 Quant Method : Z:\pestpcbsrv\HPCHEM1\ECD_D\Method\DTX060221.M
 Quant Title : GC Extractables
 QLast Update : Thu Jun 03 01:14:48 2021
 Response via : Initial Calibration
 Integrator: ChemStation

Volume Inj. : 1 µl
 Signal #1 Phase : ZB-MR2 Signal #2 Phase: ZB-MR1
 Signal #1 Info : 30M x 0.32mm x0.2 Signal #2 Info : 30M x 0.32mm x 0.50µm

Compound	RT#1	RT#2	Resp#1	Resp#2	ng/ml	ng/ml

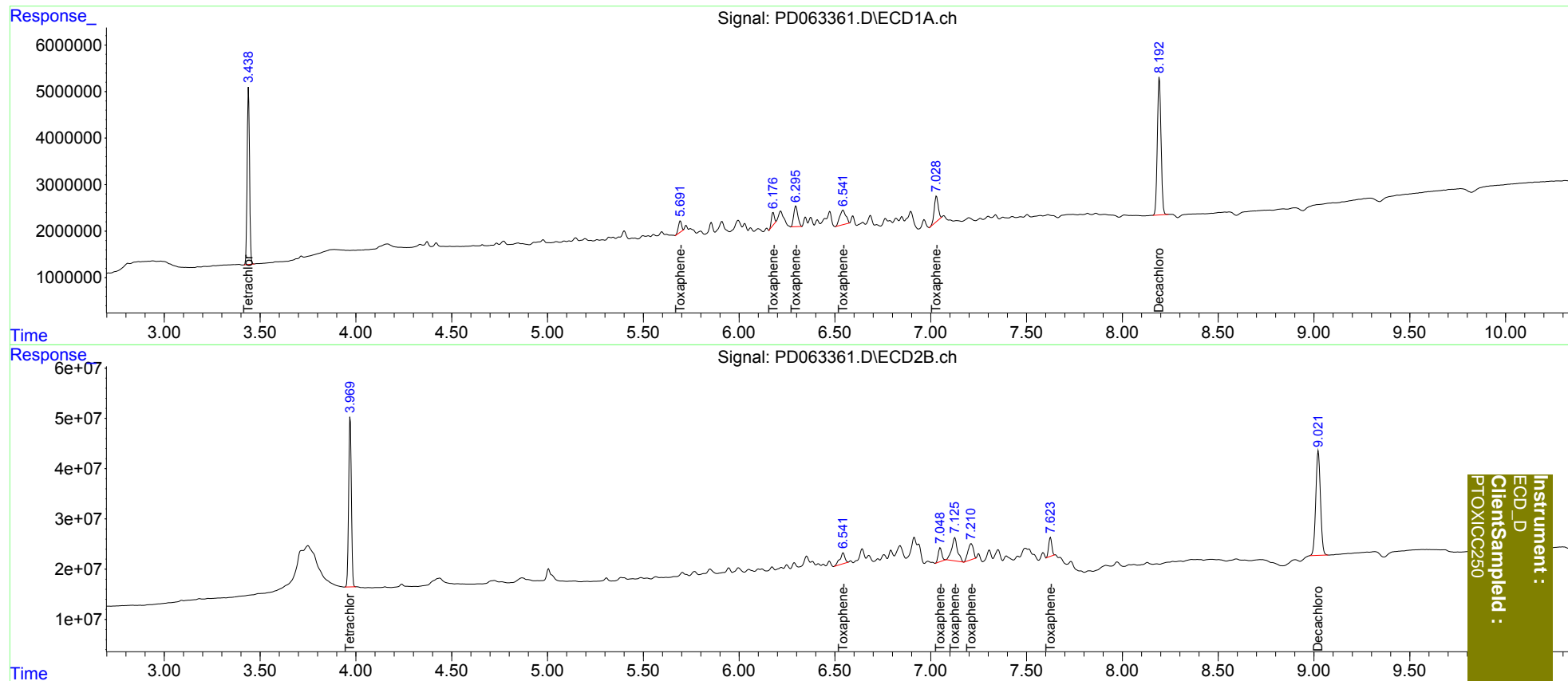
System Monitoring Compounds						
1) SA Tetrachlo...	3.440	3.970	33296335	334.7E6	24.650	25.290
7) SA Decachlor...	8.193	9.022	39370245	353.9E6	25.090	25.486
Target Compounds						
2) Toxaphene-1	5.694	6.543	2726331	39689234	262.529	247.987
3) Toxaphene-2	6.178	7.049	2784796	35658580	240.091	263.207
4) Toxaphene-3	6.296	7.126	6599099	97884410	248.592	245.837
5) Toxaphene-4	6.542	7.211	6938467	61158482	251.890	242.857
6) Toxaphene-5	7.030	7.625	7718264	42767517	245.945	242.219

(f)=RT Delta > 1/2 Window (#)=Amounts differ by > 25% (m)=manual int.

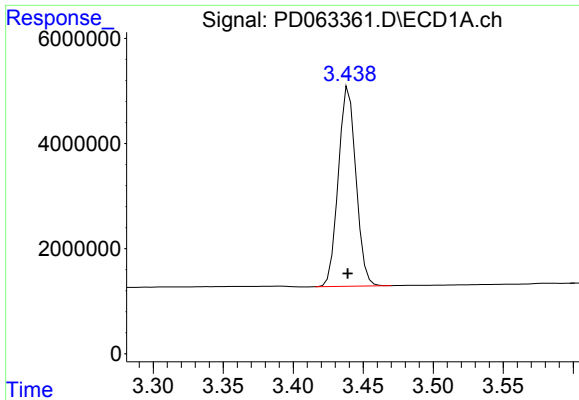
Data Path : Z:\pestpcbsrv\HPCHEM1\ECD_D\Data\PD060221\
 Data File : PD063361.D
 Signal(s) : Signal #1: ECD1A.ch Signal #2: ECD2B.ch
 Acq On : 02 Jun 2021 13:34
 Operator : AR\AJ
 Sample : PTOXICC250
 Misc :
 ALS Vial : 18 Sample Multiplier: 1

Integration File signal 1: autoint1.e
 Integration File signal 2: autoint2.e
 Quant Time: Jun 03 01:17:23 2021
 Quant Method : Z:\pestpcbsrv\HPCHEM1\ECD_D\Method\DTX060221.M
 Quant Title : GC Extractables
 QLast Update : Thu Jun 03 01:14:48 2021
 Response via : Initial Calibration
 Integrator: ChemStation

Volume Inj. : 1 µl
 Signal #1 Phase : ZB-MR2 Signal #2 Phase: ZB-MR1
 Signal #1 Info : 30M x 0.32mm x 0.2 Signal #2 Info : 30M x 0.32mm x 0.50µm

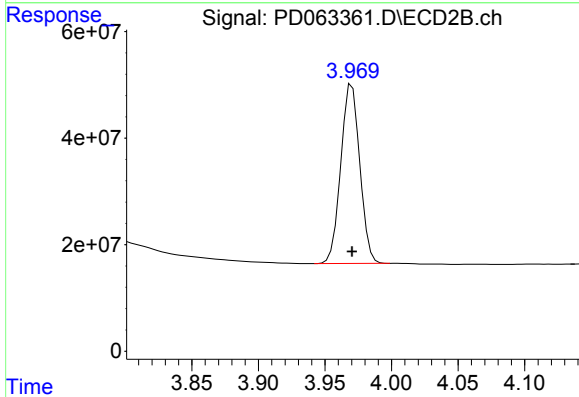


Instrument :
 ECD_D
 ClientSampleId :
 PTOXICC250

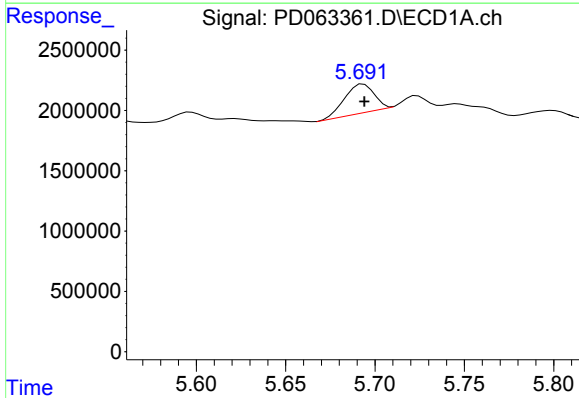


#1 Tetrachloro-m-xylene
R.T.: 3.440 min
Delta R.T.: 0.000 min
Response: 33296335
Conc: 24.65 ng/ml

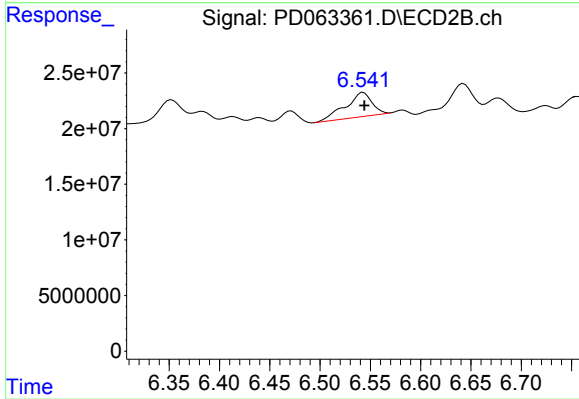
Instrument :
ECD_D
ClientSampleId :
PTOXICC250



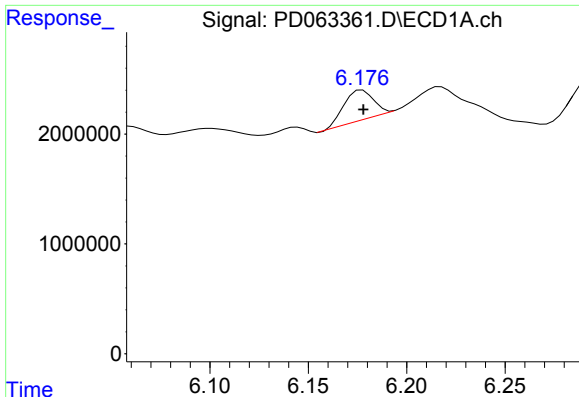
#1 Tetrachloro-m-xylene
R.T.: 3.970 min
Delta R.T.: 0.000 min
Response: 334688720
Conc: 25.29 ng/ml



#2 Toxaphene-1
R.T.: 5.694 min
Delta R.T.: 0.000 min
Response: 2726331
Conc: 262.53 ng/ml



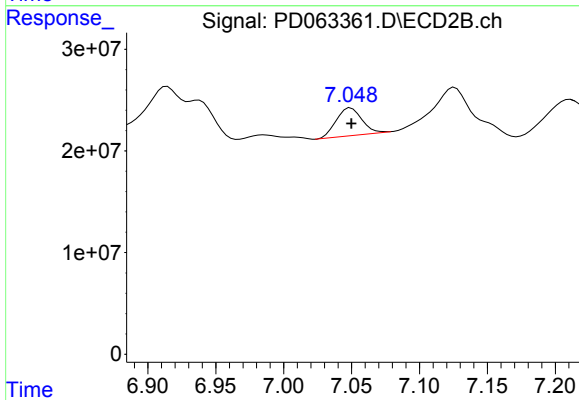
#2 Toxaphene-1
R.T.: 6.543 min
Delta R.T.: 0.000 min
Response: 39689234
Conc: 247.99 ng/ml



#3 Toxaphene-2

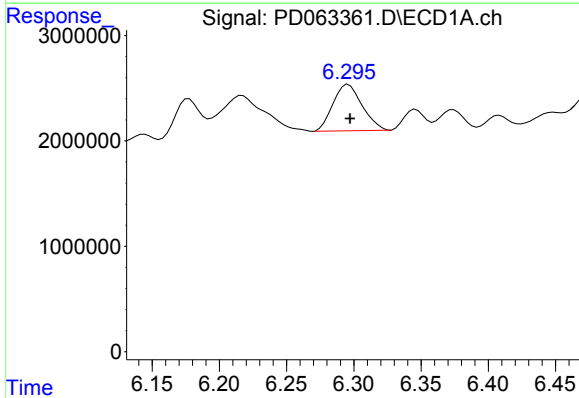
R.T.: 6.178 min
 Delta R.T.: 0.000 min
 Response: 2784796
 Conc: 240.09 ng/ml

Instrument :
 ECD_D
 ClientSampleId :
 PTOXICC250



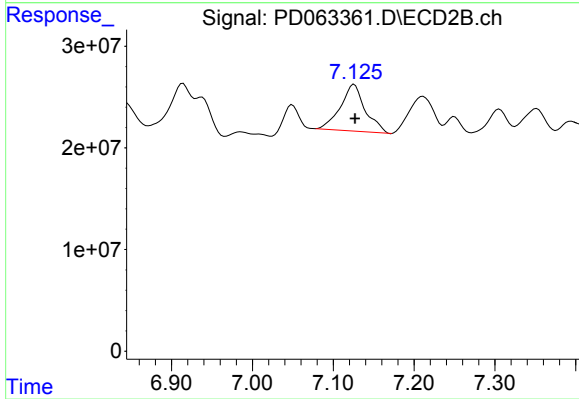
#3 Toxaphene-2

R.T.: 7.049 min
 Delta R.T.: 0.000 min
 Response: 35658580
 Conc: 263.21 ng/ml



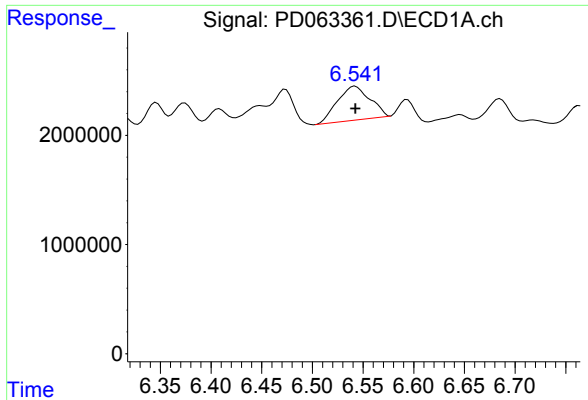
#4 Toxaphene-3

R.T.: 6.296 min
 Delta R.T.: -0.001 min
 Response: 6599099
 Conc: 248.59 ng/ml



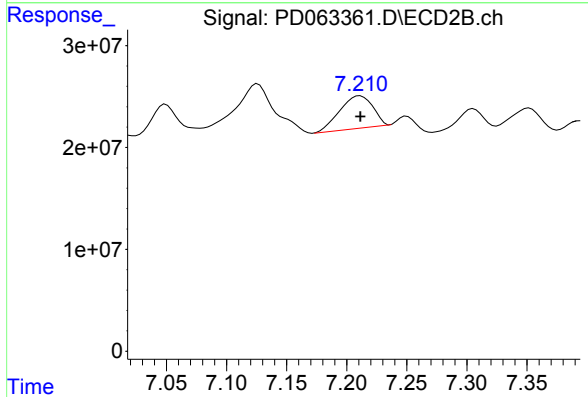
#4 Toxaphene-3

R.T.: 7.126 min
 Delta R.T.: 0.000 min
 Response: 97884410
 Conc: 245.84 ng/ml

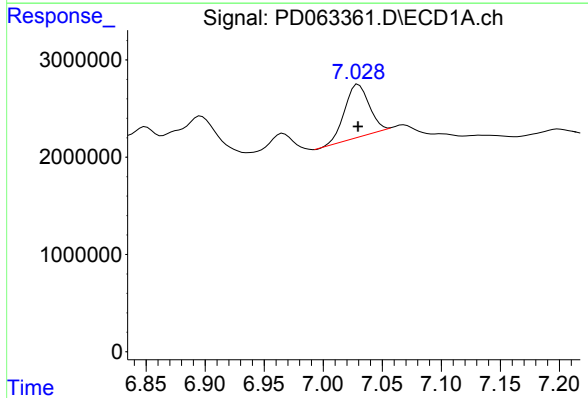


#5 Toxaphene-4
 R.T.: 6.542 min
 Delta R.T.: 0.000 min
 Response: 6938467
 Conc: 251.89 ng/ml

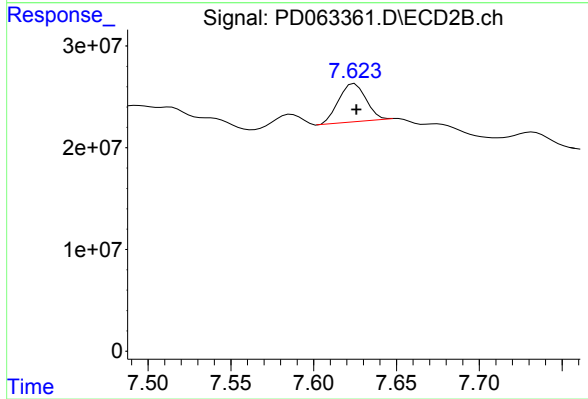
Instrument :
 ECD_D
 ClientSampleId :
 PTOXICC250



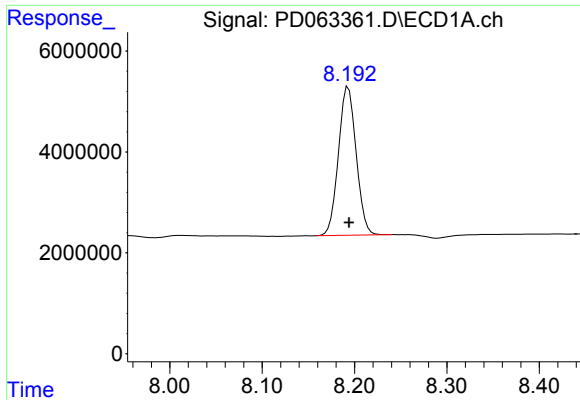
#5 Toxaphene-4
 R.T.: 7.211 min
 Delta R.T.: 0.000 min
 Response: 61158482
 Conc: 242.86 ng/ml



#6 Toxaphene-5
 R.T.: 7.030 min
 Delta R.T.: 0.000 min
 Response: 7718264
 Conc: 245.94 ng/ml



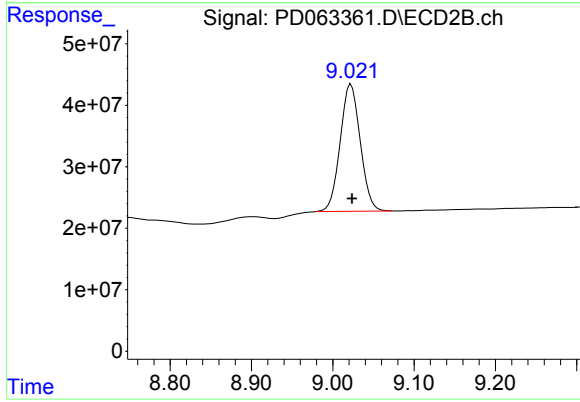
#6 Toxaphene-5
 R.T.: 7.625 min
 Delta R.T.: 0.000 min
 Response: 42767517
 Conc: 242.22 ng/ml



#7 Decachlorobiphenyl

R.T.: 8.193 min
Delta R.T.: 0.000 min
Response: 39370245
Conc: 25.09 ng/ml

Instrument :
ECD_D
ClientSampleId :
PTOXICC250



#7 Decachlorobiphenyl

R.T.: 9.022 min
Delta R.T.: -0.001 min
Response: 353932337
Conc: 25.49 ng/ml